

Kenyon College

Digital Kenyon: Research, Scholarship, and Creative Exchange

Orville E. Watson, D.D. Postcard Collection

Archives

June 2015

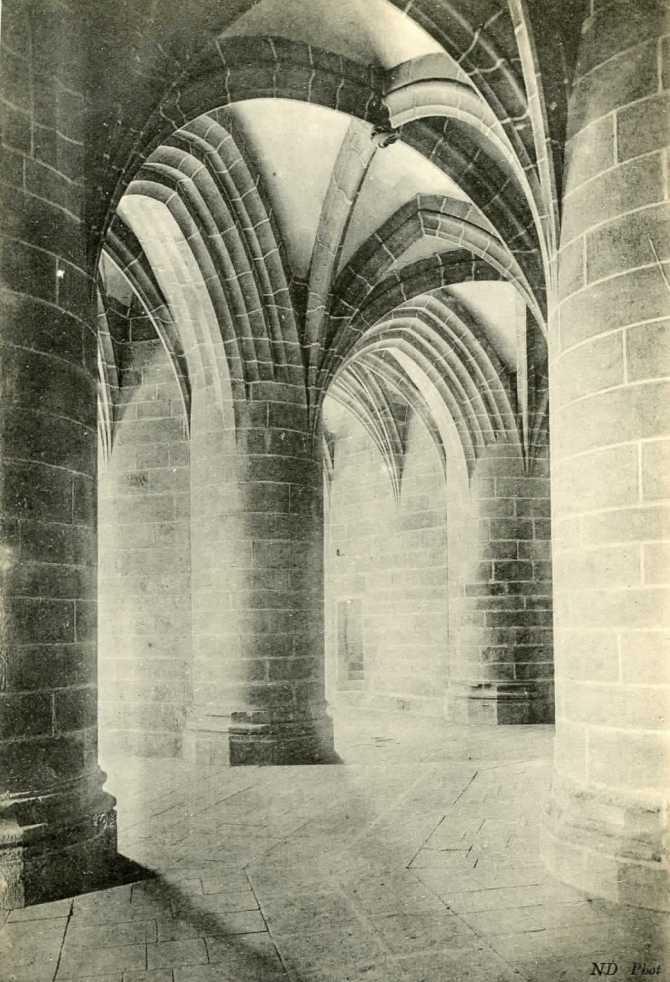
Abbaye du Mont Saint-Michel - La Crypte des Gros Piliers

Follow this and additional works at: http://digital.kenyon.edu/watson_postcards

Recommended Citation

"Abbaye du Mont Saint-Michel - La Crypte des Gros Piliers" (2015). *Orville E. Watson, D.D. Postcard Collection*. Book 703.
http://digital.kenyon.edu/watson_postcards/703

This Book is brought to you for free and open access by the Archives at Digital Kenyon: Research, Scholarship, and Creative Exchange. It has been accepted for inclusion in Orville E. Watson, D.D. Postcard Collection by an authorized administrator of Digital Kenyon: Research, Scholarship, and Creative Exchange. For more information, please contact noltj@kenyon.edu.



ND Phot

Abbaye du Mont Saint-Michel. — La Crypte des Gros Piliers
(XV^e siècle)

Carte Postale

Tous les pays étrangers n'acceptent pas la correspondance au recto.
Se renseigner à la poste.

Correspondance



Adresse

