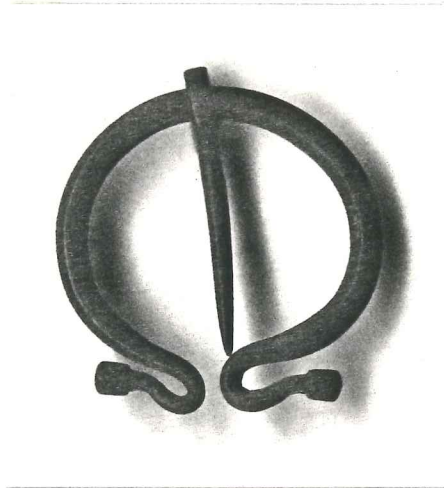


Purchase receipts and descriptions by David P. Harris, with the Blick-Harris Study Collection accession numbers indicated in yellow.



2020.174

BRONZE CELTIC PENANULAR BROOCH

This typical early bronze brooch is in the form of a circle open at the bottom, the thin ends curving back and terminating in knobs with incised cross-hatching. The pin is attached by a ring. Dark patination except at the top of the brooch where rubbing by the pin has uncovered the bronze.

Height: 1 5/8"

Ca. 1st c. B.C./A.D.

Purchased from the Falcon Gallery, London, on June 20, 1969, for \$46.

Falcon Gallery

11 Mount Street, London, W.1.

01-629 1256

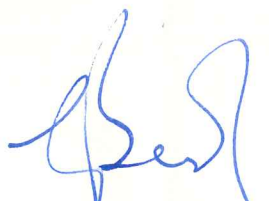
June 20th 1969

569 A Celtic bronze buckle with looped terminals, the pin attached by
a ring. Dark green patination

1st Millenium BC

dia. 4.5cms

£19 0 0



for the Falcon Gallery

Dr David Harris,
3420 39th Street, NW
Washington U.S.A.