
Four Valleys Archive

Anthropology

1985

PSB Subop 103H Section Structure 3

Edward Mark Schortman
schortma@kenyon.edu

Follow this and additional works at: <https://digital.kenyon.edu/honduras>



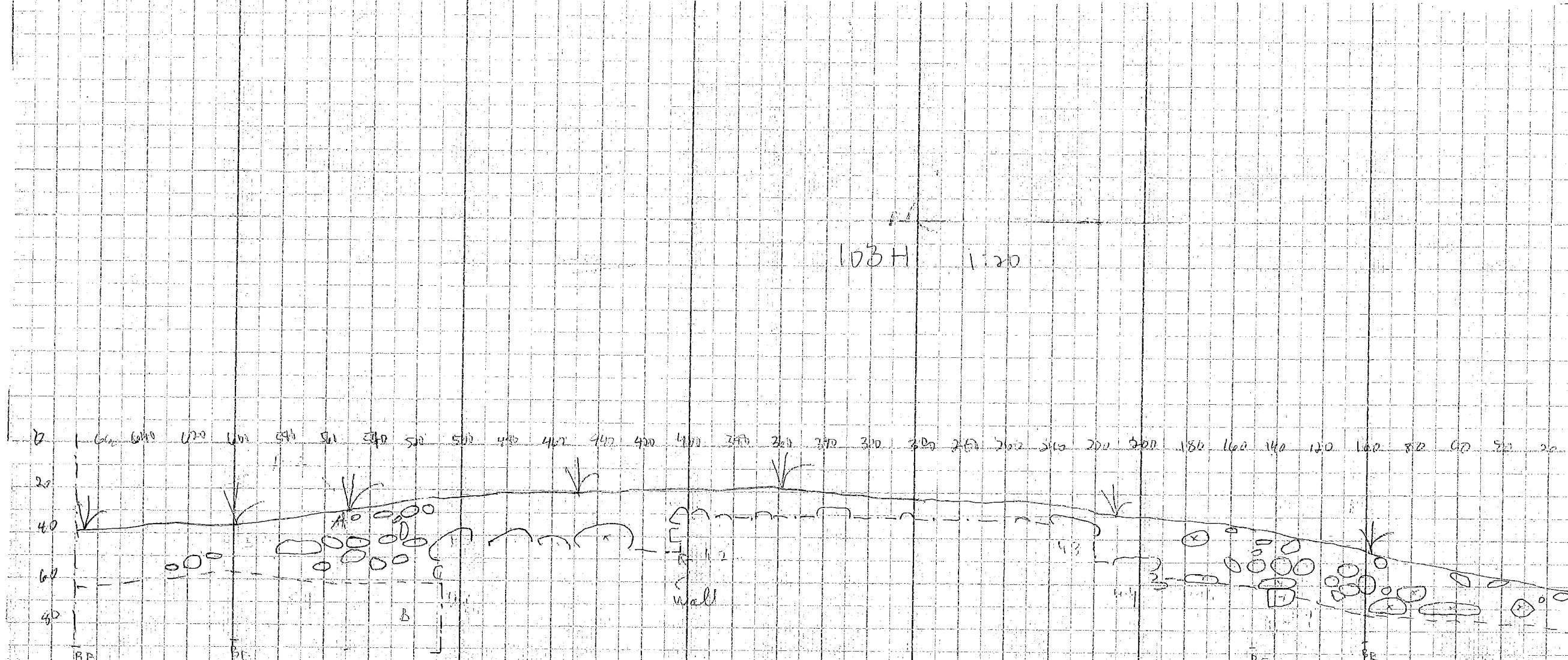
Part of the Archaeological Anthropology Commons

Recommended Citation

Schortman, Edward Mark, "PSB Subop 103H Section Structure 3" (1985). *Four Valleys Archive*. Paper 93337.

<https://digital.kenyon.edu/honduras/93337>

This Drawing is brought to you for free and open access by the Anthropology at Digital Kenyon: Research, Scholarship, and Creative Exchange. It has been accepted for inclusion in Four Valleys Archive by an authorized administrator of Digital Kenyon: Research, Scholarship, and Creative Exchange. For more information, please contact noltj@kenyon.edu.



- 103 390 ZUCARITA S. to NE corner
- 490 QUISP to corner
- 1.10 QUISP going east
- 1.23 south to SE corner 1036
- 1.84 SB to SW corner 1036

103
 103H
 1:20