
Four Valleys Archive

Anthropology

1996

PVN Op 46 Osteological Analyses

Susan Moorehead

Follow this and additional works at: <https://digital.kenyon.edu/honduras>



Part of the Archaeological Anthropology Commons

Recommended Citation

Moorehead, Susan, "PVN Op 46 Osteological Analyses" (1996). *Four Valleys Archive*. Paper 92942.
<https://digital.kenyon.edu/honduras/92942>

This Analysis Sheet is brought to you for free and open access by the Anthropology at Digital Kenyon: Research, Scholarship, and Creative Exchange. It has been accepted for inclusion in Four Valleys Archive by an authorized administrator of Digital Kenyon: Research, Scholarship, and Creative Exchange. For more information, please contact noltj@kenyon.edu.

Kenyon College
 NACO VALLEY ARCHAEOLOGICAL PROJECT
 Burial Summary Form

Site: Mk/09 Unit: 8-13 Excavator: #75
 Burial ID #: 316 Date: 3/16/96

Burial Description

Single Individual:

Age: Infant

- In utero-Neonate
- Infant (birth-2.9 yrs)
- Subadult (3-11.9 yrs)
- Adolescent (12-19.9 yrs)
- Young Adult (20-34.9 yrs)
- Middle Adult (35-50 yrs)
- Old Adult (50+ yrs)
- Adult (Adult age undetermined)
- Undetermined

Mean Age: 1.5 yrs

Preserved Remains:

F Cranial
NP Post Cranial

Code: Complete (>75%)
 PC (partially complete)
 Fragmentary (<25%)
 NP (not present)

Preservation Quality:

P Cranial
NP Post Cranial

Code: G (good)
 M (moderate)
 P (poor)
 NP (not present)

Burial Description Summary: (Pathology etc.)

Very fragmentary

10 grams of cranial frags removed for testing 3/25/96

Sex: 0
 0 = Undetermined sex
 1 = Female
 2 = Probable Female
 3 = Ambiguous sex
 4 = Probable male
 5 = Male

Multiple Individuals: _____

Kenyon College
NACO VALLEY ARCHAEOLOGICAL PROJECT
Burial Excavation Notes

Date of Excavation: 5/8/95
Excavator: #75
Site: A16 K/09
Burial ID #: 8-13
Unit: _____
Level: _____
Provenience: _____
Burial Orientation: _____

Field Age assessment: Subadult - 1.5-2yrs
Field Sex assessment: _____

Associated Funerary Remains: Artifacts found in lab: None

General Excavation Notes:
One plastic bag labeled "A16 K/09 #75 5/8/95
bag #2 of 2 bones & teeth (human)".
This bag contains cranial and teeth fragments from
a subadult (1.5-2yrs - cursory examination only). The
lot card notes do not indicate whether the first bag
of the #2 of 2 was artifact or more bones. Right now
all we have are the cranial and teeth frags, but will be
on the look-out for more.

**INVENTORY RECORDING FORM
FOR COMPLETE SKELETONS**

Site Name/Number _____
 Observer _____
 Feature/Burial Number _____
 Burial/Skeleton Number _____
 Present Location of Collection _____

Site Name/Number	916 K	109	Observer	A. Moorhead
Feature/Burial Number			Date	2/16/96
Burial/Skeleton Number	8-13	1		
Present Location of Collection	Cofradia, Cortes, Honduras			

FRONTAL	Frontal	_____	_____	_____
PARIETAL	Parietal	_____	_____	_____
OCCIPITAL	Occipital	_____	_____	_____
TEMPORAL	Temporal	2	2	3
MANDIBLE	<u>Mandible</u>	_____	_____	_____
CRANIAL BONES AND JOINT SURFACES				
L (left) / R (right)				
Sphenoid	_____	_____	_____	_____
Zygomatic	_____	_____	_____	_____
Maxilla	_____	_____	_____	_____
Palatine	_____	_____	_____	_____
POSTCRANIAL BONES AND JOINT SURFACES				
Clavicle	_____	_____	_____	_____
Scapula	_____	_____	_____	_____
Body	_____	_____	_____	_____
Glenoid f.	_____	_____	_____	_____
Patella	_____	_____	_____	_____
Sacrum	_____	_____	_____	_____
VERTEBRAE (Individual)				
Neural Arch	_____	_____	_____	_____
Centrum	_____	_____	_____	_____
C1	_____	_____	_____	_____
C2	_____	_____	_____	_____
C7	_____	_____	_____	_____
T10	_____	_____	_____	_____
T11	_____	_____	_____	_____
T12	_____	_____	_____	_____
L1	_____	_____	_____	_____
L2	_____	_____	_____	_____
L3	_____	_____	_____	_____
L4	_____	_____	_____	_____
L5	_____	_____	_____	_____
RIBS (grouped)				
Manubrium	_____	_____	_____	_____
Body	_____	_____	_____	_____
3-10				
RIBS (grouped)				
#Present/# Complete	_____	_____	_____	_____
Neural Arches	_____	_____	_____	_____
Centra	_____	_____	_____	_____
C3-6	_____	_____	_____	_____
T1-T9	_____	_____	_____	_____
Sternum:				
Manubrium	_____	_____	_____	_____
Body	_____	_____	_____	_____
3-10				
RIBS (grouped)				
#Present/# Complete	_____	_____	_____	_____
Unsided	_____	_____	_____	_____

Immature measurements:
 1) a) Length of Petrous $\Rightarrow 46.65 \text{ mm}$
 Irb fragment $\Rightarrow 29$
 Gertrude fragments $\Rightarrow 18g$

Comments:

HAND (# Present/# Complete)		FOOT (# Present/# Complete)	
L	R	L	R
Unsid	Unsid	Unsid	Unsid
# Carpals	____	____	____
# Metacarpals	____	____	____
# Phalanges	____	____	____
# Tarsals	____	____	____
# Metatarsals	____	____	____
# Phalanges	____	____	____

LONG BONES	
Diaphysis	Epiphysis
Proximal	Proximal
Middle	Middle
Third	Third
Distal	Distal
Epiphysis	Epiphysis

- Left Humerus
- Right Humerus
- Left Radius
- Right Radius
- Left Ulna
- Right Ulna
- Left Femur
- Right Femur
- Left Tibia
- Right Tibia
- Left Fibula
- Right Fibula
- Left Talus
- Right Talus
- Left Calcaneus
- Right Calcaneus

Series/Burial/Skeleton: 416K109 3-13
 Observer/Date: J. Moorhead 4/6/96

ADULT SEX/AGE RECORDING FORM

Site Name/Number: 416 K / 091 Observer: J. Moorhead

Feature/Burial Number: 1 Date: 2/16/96

Burial/Skeleton Number: S-13

Present Location of Collection: Cefradia, Cortes, Honduras

SEX	Skull	Pelvis		
		R	L	
				Estimated Sex, Pelvis (0-5)
				Estimated Sex, Skull (0-5)
				Ventral Arc (1-3)
				Subpubic Concavity (1-3)
				Ischiopubic Ramus Ridge (1-3)
				Greater Sciatic Notch (1-5)
				Preauricular Sulcus (0-4)
				Estimated Sex, Pelvis (0-5)
				Nuchal Crest (1-5)
				Mastoid Process (1-5)
				Supraorbital Margin (1-5)
				Glabella (1-5)
				Mental Eminence (1-5)

Comments:

Subadult

(This section of the form is crossed out with a large diagonal line.)

Dental Age: 1.5 yrs

Uebelaker, 1989: 18 months

Thoma & Goldman, 1960: dm1 root incomplete = < 2.5 yrs
dm2 enamel complete = > 11 months

Massler, 1941: 1-1.5 yrs

Comments:

Estimated Age: Young Adult (20-35 years)
Middle Adult (35-50 years)
Old Adult (50+ years)

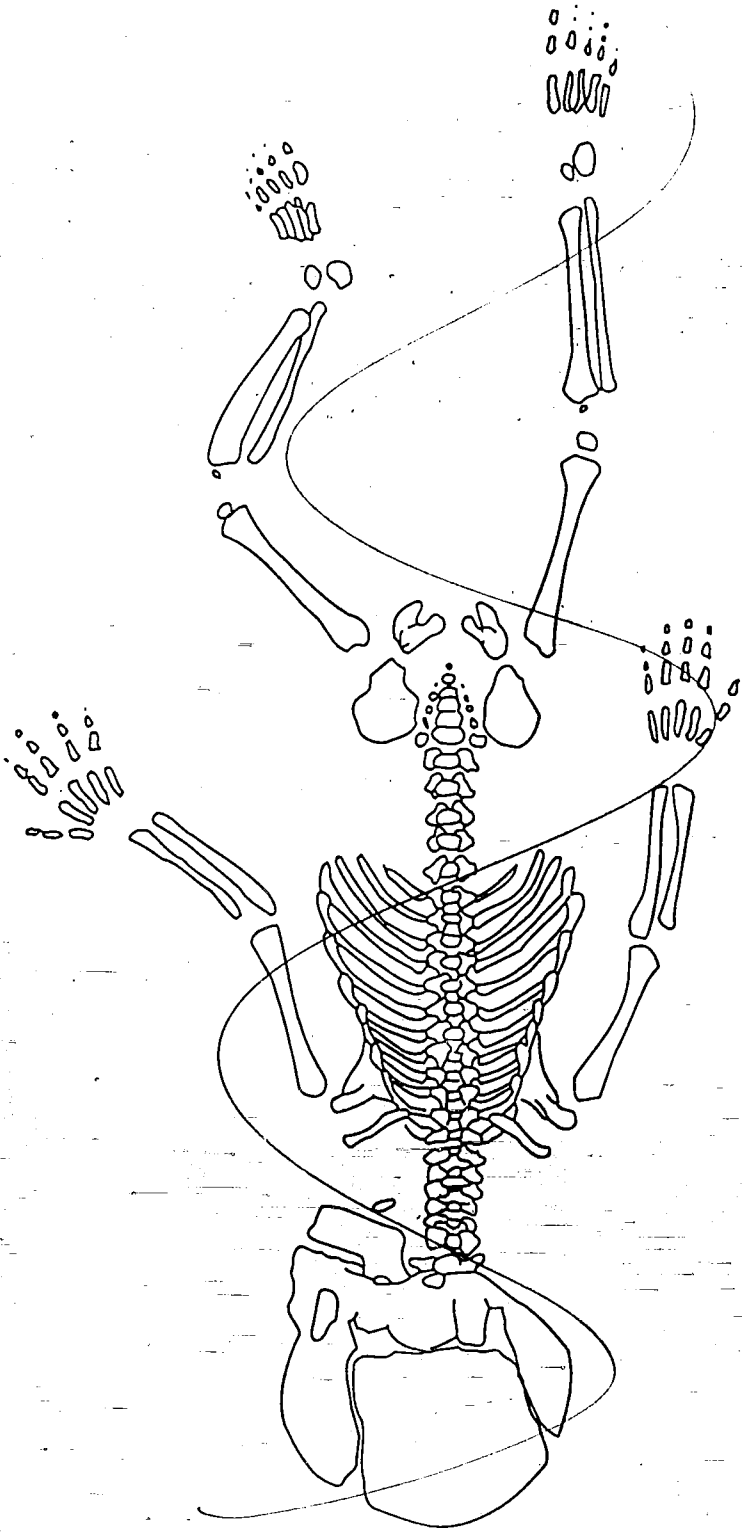
AGE	Pubic Symphysis Todd (1-10) Suchey-Brooks (1-6)	External Cranial Vault	Internal Cranial Vault	Palate
	1. Midlamdoid	11. Incisive	17. Left Coronal	
	2. Lambda	12. Anterior Median Palatine	16. Left Lambdoid	
	3. Obelion	13. Posterior Median Palatine	15. Sagittal	
	4. Anterior Sagittal	14. Transverse Palatine		
	5. Bregma			
	6. Midsagittal			
	7. Pterion			
	8. Sphenofrontal			
	9. Inferior Sphenotemporal			
	10. Superior Sphenotemporal			

Suture Closure (blank = unobservable; 0 = open; 1 = minimal; 2 = significant; 3 = complete)

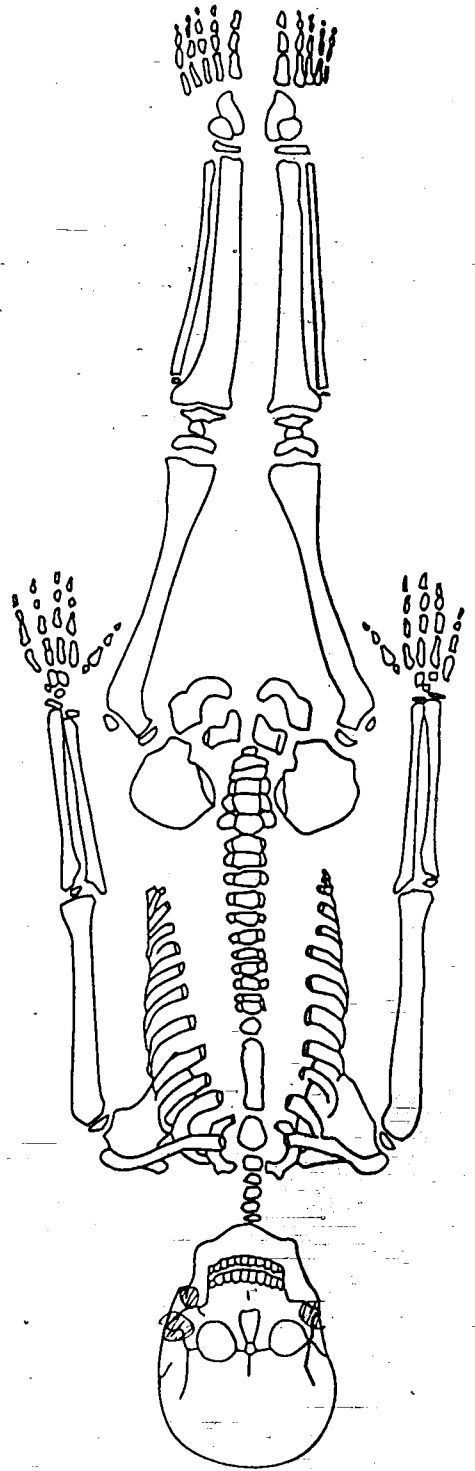
Series/Burial/Skeleton: 10K/09 9-13
Observer/Date: S. P. Knoch 3/11/510

Auricular Surface (1-8)
L R

FETUS (NEWBORN)



JUVENILE SKELETON



Series/Burial/Skeleton 416K/09, S-13
 Observer/Date S. Moorhead 1/16/96

DENTAL INVENTORY RECORDING FORM
DEVELOPMENT AND PATHOLOGY: DECIDUOUS TEETH

Site Name/Number: 1009
 Observer: S. J. Corbett
 Feature/Burial Number: 1
 Date: 4/6/70
 Burial/Skeleton Number: 8-13
 Present Location of Collection: Colorado, Cortes, Fortuna

Tooth presence and development: code 1-8. For teeth entered as "1" (present, but not in occlusion), record stage of crown/root formation under "Development". Caries: code each carious lesion separately (1-7). Abscesses: code location (1-2). Calculus: code 0-3. 9. Note surface affected (buccal/labial or lingual).

Maxillary Right	Maxillary Left	Mandibular Left	Mandibular Right	Tooth	Presence	Development	Caries	Abscess	Calculus/Affected
51 m ^r	56 l ⁱ	61 m ^l	66 r ⁱ	51 m ^r	1	8			
52 m ^r	55 l ⁱ	60 m ^l	65 l ⁱ	52 m ^r					
53 c	54 f	59 m ^l	64 f	53 c					
57 f	58 c	58 c	63 c	57 f					
55 l ⁱ	56 l ⁱ	59 m ^l	64 f	55 l ⁱ					
54 f	55 l ⁱ	60 m ^l	65 l ⁱ	54 f					
53 c	54 f	60 m ^l	65 l ⁱ	53 c					
52 m ^r	55 l ⁱ	60 m ^l	65 l ⁱ	52 m ^r					
51 m ^r	56 l ⁱ	61 m ^l	66 r ⁱ	51 m ^r	1	8			
52 m ^r	55 l ⁱ	60 m ^l	65 l ⁱ	52 m ^r					
53 c	54 f	59 m ^l	64 f	53 c					
57 f	58 c	58 c	63 c	57 f					
55 l ⁱ	56 l ⁱ	59 m ^l	64 f	55 l ⁱ					
54 f	55 l ⁱ	60 m ^l	65 l ⁱ	54 f					
53 c	54 f	60 m ^l	65 l ⁱ	53 c					
52 m ^r	55 l ⁱ	60 m ^l	65 l ⁱ	52 m ^r					
51 m ^r	56 l ⁱ	61 m ^l	66 r ⁱ	51 m ^r	1	8			
52 m ^r	55 l ⁱ	60 m ^l	65 l ⁱ	52 m ^r					
53 c	54 f	59 m ^l	64 f	53 c					
57 f	58 c	58 c	63 c	57 f					
55 l ⁱ	56 l ⁱ	59 m ^l	64 f	55 l ⁱ					
54 f	55 l ⁱ	60 m ^l	65 l ⁱ	54 f					
53 c	54 f	60 m ^l	65 l ⁱ	53 c					
52 m ^r	55 l ⁱ	60 m ^l	65 l ⁱ	52 m ^r					
51 m ^r	56 l ⁱ	61 m ^l	66 r ⁱ	51 m ^r	1	8			
52 m ^r	55 l ⁱ	60 m ^l	65 l ⁱ	52 m ^r					
53 c	54 f	59 m ^l	64 f	53 c					
57 f	58 c	58 c	63 c	57 f					
55 l ⁱ	56 l ⁱ	59 m ^l	64 f	55 l ⁱ					
54 f	55 l ⁱ	60 m ^l	65 l ⁱ	54 f					
53 c	54 f	60 m ^l	65 l ⁱ	53 c					
52 m ^r	55 l ⁱ	60 m ^l	65 l ⁱ	52 m ^r					
51 m ^r	56 l ⁱ	61 m ^l	66 r ⁱ	51 m ^r	1	8			
52 m ^r	55 l ⁱ	60 m ^l	65 l ⁱ	52 m ^r					
53 c	54 f	59 m ^l	64 f	53 c					
57 f	58 c	58 c	63 c	57 f					
55 l ⁱ	56 l ⁱ	59 m ^l	64 f	55 l ⁱ					
54 f	55 l ⁱ	60 m ^l	65 l ⁱ	54 f					
53 c	54 f	60 m ^l	65 l ⁱ	53 c					
52 m ^r	55 l ⁱ	60 m ^l	65 l ⁱ	52 m ^r					
51 m ^r	56 l ⁱ	61 m ^l	66 r ⁱ	51 m ^r	1	8			

6.65	6.08	6.70	mm
10.23	7.02	9.06	mm
10.33	8.94	11.27	mm

max + dm2	mand left dm1	mand right dm2	
Location (1-4)	Position between teeth	Location (1-4)	Position between teeth

Estimated dental age (juveniles only) 1.5 yrs

32 M.				
31 M.				
30 M.				
29 P.				
28 P.				
27 C	1			
26 I.				
25 I.				
24 I.				
23 I.				
22 C				
21 P.				
20 P.				
19 M.				
18 M.				
17 M.				

Right Mandibular
Left Mandibular
Tooth Presence Development Wear/Total
Abscess
Caries
Calculus/Affected

Observer/Date S. Moorhead 2/16/16

Series/Burial/Skeleton 16E109 8-13