

1986

## PSB-005-Urban-Field Notes-1986

Patricia Urban

Follow this and additional works at: <https://digital.kenyon.edu/honduras>



Part of the Archaeological Anthropology Commons

---

### Recommended Citation

Urban, Patricia, "PSB-005-Urban-Field Notes-1986" (1986). *Four Valleys Archive*. Paper 92925.  
<https://digital.kenyon.edu/honduras/92925>

This Field Notes is brought to you for free and open access by the Anthropology at Digital Kenyon: Research, Scholarship, and Creative Exchange. It has been accepted for inclusion in Four Valleys Archive by an authorized administrator of Digital Kenyon: Research, Scholarship, and Creative Exchange. For more information, please contact [noltj@kenyon.edu](mailto:noltj@kenyon.edu).

PSS-5-23

106AA NE exposure  
 line is exposed  
 90cm N-S; 4 rocks long N-S.  
 at points 60cm E of grapefruit. It apparently  
 consists of 2 beds; 1st bed 33cm deep E-W and  
 is exposed 1 stone high 2) 33cm  
 deep E-W consists of (measured) 3 stones  
 high ~ 25cm. Line feature about  
 Grapefruit and it seems to extend about  
 10-15 cm N of Grapefruit, apparent corner.  
 45cm W of Grapefruit, apparent corner  
 in corner. Numbering N-S. has been exposed  
 for a total distance of 2.4m. for 140cm  
 N of Grapefruit. It preserved to a height  
 of 85cm. After that it steps down to  
 2 corners about 18-20cm high. Above  
 that is ~ 25cm of rock with a 2nd layer of  
 stones about 20 cm above the top deposit.  
 course of lens. On the north corner  
 may be interesting as E-W joining line.  
 which is not clearly clear at the time  
 lenser actually runs out about parallel w/  
 trace. What lenser indicates  
 Grapefruit over with the 2nd course of rocks  
 is a clump of flat rocks. This doesn't seem  
 of line to have course of lenser 1.15m.

off of line	What to strike in next Ave of line:
N-S	22
22	23
23	22
20	20
N-S	23
22	23
23	20
22	20
N-S	18
22	19
23	12
20	11
22	8
23	17
20	8
N-S	8
22	9
23	10
20	8
22	8

truck

2nd and 3rd course of lime:

3 remaining stones in 3rd course:  
 17 17  
 11 16  
 17 18  
 18 8

stones in 3rd course:  
 6 6  
 4 4  
 8 8  
 5 5

Grout is present to maximum ht 35cm  
 strings and falling to the east, the base  
 rises as it moves to the North.  
 Stones: N-S

bottom course 22  
 15  
 17  
 14  
 10  
~~10~~  
 24  
 20  
 25  
 15  
 9

2nd  
 8  
 13  
 9  
 9  
 8  
 5  
 8  
 5  
 10  
 5

3rd  
 not much remaining in this course

4th

LEMONT: N-S  
 22  
 16  
 21  
 12  
 13  
 12  
 10  
 17  
 10

40-120cm  
 12  
 11  
 10  
 6  
 5  
 5  
 4  
 6  
 5

2nd:

June 1986

886-5-26

It rained very heavily last night in Sta. B. The house was flooded, and our bedroom turned into a water fall. We had to move the bed, and S+C + E + I spent 1.5 hrs mopping + sweeping water, + sopping it up with towels. I went to bed at 9:30 and woke exhausted with water pains all over. I plan to have shells as pillows as possible today.

Today

I am no longer certain that the western features (BLUE BERRY, LOGAN BERRY, and BOYSEN BERRY) are part of the final Sh. 15. We are concentrating on the east side of Sh. 15 and will turn to STA B BERRY. BOYSEN BERRY + BLUE BERRY are to my lower priority.

STRAW BERRY:

Exposed for a length of 70 cm. Not appear in S wall of trench. E wall is 2 stones high 25cm.

The 3 large rocks of STRAW BERRY are the following sizes

NS-23	EW 27	Thick 7
NS-35	in pit EW27	8
NS-6	EW 27	Thick - 3
NS-8	EW 27	None
NS-10	EW 27	- 3
NS-16	EW 27	- 5
NS-7	EW 27	- 4

The small stones packed under + around are:

as noted in section on the N side of pit to E of STRAW BERRY is mostly dirt most of stones appear in S end or S. portion of pit are irregular may have been surface under New

only 2 clearly in good position are 2 large rocks wedge of first one is 2 inches E of STRAW BERRY

are in approx center of axial trench they are.

NS 28  
EW 42

EW 49

NS 32

**CRANBERRY West side.**

construction reminds me of Stn 2 excav. 1985  
 west face appears to have been constructed in two  
 parts there is a very large rock goes into trench  
 wall + extends out 16 cm is 18 cm thick above  
 which are 3 smaller rocks ① is large by 5 thick  
 ② NS 12 EW 18 Thk 4 ③ NS 11 EW 17 Thk 4

to N of these rocks there are 4 courses of small to med  
 cobbles.

NS	5	13	7
	18	16	4
	16	16	4
	15	14	3
	5	1	5
	10	1	12
	11	1	5
	9	1	4
	3	1	2
	13	1	6
	27	1	12
	16	1	7
	22	1	7

four rocks  
 of top  
 course

the smallest one or these are the size of the chimney stones

CRANBERRY is ca. 85 cm EW on E side is a clear

broken or faced rock ~~which~~ which is the S edge  
 of Northern construction block lines up perfectly with  
 that brick we see here

To East of CRANBERRY Summit seems some what

disturbed was probably another feature in 90m  
 from CRANB west side but hard to say from current

evidence.

GOOSEBERRY: Its wedge is 2.35 from W edge of

CRANBERRY

GOOSEBERRY as it is revealed here clearly consists

of 2 large rocks. The 5 one is a least 40cm NS x 29 EW

x 12 Thick the other (Northern) is 30 NS x 20 EW x 12 Thick

It is possible we cut through the E side of GOOSEBERRY

because in trench N. face there is another large rock

suggesting GOOSE may have been ~~to~~ as much as 90 EW

on N side on South side evidence suggests was

at least 65 cm wide

MULLBERRY: Has been uncovered to total height of 40 to 44 cm. It has 4 rough courses of rocks. The upper rocks are

while the  
stones are pretty  
much flat side  
out here appears  
to be broken  
or faced.

Upper rocks	Under rocks those most clean	Bottom layer
NS 24 24 18 17 13	18 16 7 4 4 18 7 4 5 6	12 7 25
EW 16 24 18 15 8	11 11 11 11 11 11 11 11 11 11	11 11 11
Thick 10 6 9 7 7	6 5 7 4 3 7 5 7 7 1	10 5 13

**RASPBERRY:**  
 Total length from Rt wall to corner is 4m 30cm  
 it stands ca. 20cm high + consists of in most places  
 seems to have 2 courses.  
~~The stones of Rasp~~ have flat faces out some  
 appears to be broken or roughly faced. Most are guide  
 larger.

Axial/out  
top course

corner  
top course  
then  
work  
back

fill  
racks  
wall not  
appear in  
whose faces

only  
racks  
ston

42  
7  
14  
7  
4  
6  
24  
23  
5  
17  
13  
18  
19  
8  
16  
8  
30  
14  
7  
17  
14  
13  
36  
13  
15  
28  
21  
41  
7  
24  
30  
NS

1  
1  
1  
1  
1  
1  
1  
1  
1  
1  
1  
1  
1  
1  
1  
1  
1  
1  
16  
21  
33  
25  
35  
14  
20  
27  
EW

15  
M  
L  
H  
8  
5  
10  
10  
5  
15  
15  
0  
5  
15  
6  
5  
3  
12  
11  
4  
8  
8  
4  
21  
4  
12  
6  
7  
1  
6  
8  
9  
Thick

- is flat face to S.  
really part of  
RASPBERRY

6/6/80  
POINT

1 PIT 106CC Trench main, insect work, end

2 Trench main, SW corner

3 Trench main, SE corner

4 STRIPING, sand

5 STRIPING, N end

6 GAR BARRIO E end

7 GAR BARRIO W end

8 REPAIRED, E end

9 REPAIRED W end

10 GREEN, E end

11 GREEN, W end

12 WAX E end

13 WAX W end

14 TRAVE LINE SE corner

15 TRAVE LINE SW corner

16 LIMA/GAR BARRIO intersection

17 LIMA/BUTTER BEAN CORN

18 FAVA/FAVA intersection

19 FAVA sand & drain

20 FAVA PINTO corn

21 PINTO N end

22 Trench NW ext, N/E corner

23 Trench NW ext, S/E corner

24 100% APD DRAINAGE set trench 10

25 ~~GRAPEFRUIT~~ ~~at trench~~

26 ~~GRAPEFRUIT~~ ~~at trench~~

27 GRAPEFRUIT N end

28 LIME/GRAPEFRUIT

29 LIME SE corner

30 LIME SW corner

31 LIME RISER sand

32 LIME RISER N end

33 LEMON SAND

34 LEMON N end + LEMON CORN

35 CORN LEMON + LEMON

DIST

40.24

41.29

41.53

40.10

38.93

38.25

37.95

37.72

37.35

37.18

36.78

36.60

30.15

35.07

34.65

37.80

39.54

38.87

40.10

38.65

36.81

37.47

40.18

40.02

36.69

34.98

36.88

35.06

35.64

21 PPLE

2277

2337

2372

2467

2481

2301

2205

1914

1928

1767

1771

1565

1548

1392

1453

2066

2469

2249

2298

2197

2067

2050

2050

1909

2342

2324

2291

2312

1903

1500 45'

1550 57'

1540 51'

1540 34'

1540 07'

1530 24'

1530 18'

1500 47'

1540 00'

1520 15'

1540 36'

1510 50'

1530 3d

1500 50'

1500 50'

1580 30'

1590 20'

1590 48'

1590 18'

1540 30'

1540 30'

1590 15'

1600 52'

1450 00'

1430 37'

1440 24'

1420 47'

1430 20'

1420 40'

1420 55'

1410 45'

1430 30'

1420 05'

1430 50'

1410 40'

1430 50'

1420 05'

1430 30'

1420 25'

1410 40'

1430 50'

1420 05'

1430 30'

1420 30'

1430 30'

1430 30'

1420 30'

1420 30'

1420 30'

1420 30'

1420 30'

1420 30'

1420 30'

1420 30'

1420 30'

1420 30'

1420 30'

1420 30'



0.157	1932	142° 35'
31.86	1975	143° 17'
31.43	2030	142° 45'
30.96	1916	140° 15'
32.20	2035	141° 45'
33.94	1982	139° 45'
34.87	2180	141° 46'
36.55	2100	144° 30'
37.35	2384	145° 30'
38.96	2519	124° 26'
19.88	2401	123° 40'
20.40	2248	125° 30'
20.87	2282	127° 15'
18.92	2368	118° 57'
19.31	2248	118° 41'
19.14	2391	116° 52'
20.64	1813	109° 41'
22.88	1748	108° 35'
22.78	1691	106° 00'
23.76	1709	105° 03'
22.25	2075	114° 00'
22.00	1989	110° 38'
23.48	1850	109° 15'
15.17	2055	209° 15'
14.54	2348	202° 17'
10.55	2427	207° 47'
10.61	2142	212° 30'
15.20	2061	199° 00'
27.13	1688	184° 15'
30.33	2066	184° 30'
30.05	1528	173° 46'
30.50	1911	163° 05'
28.75	1669	162° 20'
30.32	2176	169° 43'
30.70	2190	170° 10'
31.17	2116	171° 45'
32.40	2108	172° 26'

142° 35'	142° 35'
143° 17'	143° 17'
142° 45'	142° 45'
140° 15'	140° 15'
141° 45'	141° 45'
139° 45'	139° 45'
141° 46'	141° 46'
144° 30'	144° 30'
145° 30'	145° 30'
124° 26'	124° 26'
123° 40'	123° 40'
125° 30'	125° 30'
127° 15'	127° 15'
118° 57'	118° 57'
118° 41'	118° 41'
116° 52'	116° 52'
109° 41'	109° 41'
108° 35'	108° 35'
106° 00'	106° 00'
105° 03'	105° 03'
114° 00'	114° 00'
110° 38'	110° 38'
109° 15'	109° 15'
209° 15'	209° 15'
202° 17'	202° 17'
207° 47'	207° 47'
212° 30'	212° 30'
199° 00'	199° 00'
184° 15'	184° 15'
184° 30'	184° 30'
173° 46'	173° 46'
163° 05'	163° 05'
162° 20'	162° 20'
169° 43'	169° 43'
170° 10'	170° 10'
171° 45'	171° 45'
172° 26'	172° 26'

6	106 A A	L 170° W + trench
7		
8		
9		
10		
11		
12		
13		
14		
15		
16		
17		
18		
19		
20		
21		
22		
23		
24		
25		
26		
27		
28		
29		
30		
31		
32		
33		
34		
35		
36		
37		
38		
39		
40		
41		
42		
43		
44		
45		
46		
47		
48		
49		
50		
51		
52		
53		
54		
55		
56		
57		
58		
59		
60		
61		
62		
63		
64		
65		
66		
67		
68		
69		
70		
71		
72		
73		
74		

137  
Ht.  
New Inf. 4/20/06 X west end trench SE corner

PAINT

6 June 1982

Page 5-32

We have put Lospido + Sergio on the Z pit / Sh. G excavations, to dig & have all the stones clear for drawing tomorrow. Rather than clarifying the rooms, some of today's work has made matters more obscure. We may have the ~~west~~ east side of the steps apparently appended to the south side of Sh. 8. Following BITER, there has not been very useful - it seems to go on one, one stone high. The area between BITER and the clearer features uncovered by the ~~main~~ main trench. It full of rocks, but not clear either. The SE corner of BOSC does seem a little better, but the SW corner is not clear yet.

104 X  
 5/28/93  
 4/2/93

GRANULISTEIN: exposed 93 cm Bu; 34 cm high preserved  
 69° orientation; 5 cobbles, but variable, some  
 small cobbles, no clinkers, little druse covering, all  
 in topsoil  
 stone sizes

9	11	9	4
4	7	4	4
11	11	3	3
9	19	9	3
Bu	Bu	Trick	

PIPPERL: 42 cm N of GRANULISTEIN, 12 cm high  
 essentially 1 stone; 68° orientation; small cobbles all  
 in topsoil

12	12	12	9
1	15	15	14
6	4	9	13
15	4	4	11
NS	6	6	12
Bu	NS	NS	14
12	12	2	12

GRANULISTEIN: 44 cm, N of PIPPERL; 20 cm high,  
 66° orientation; all in topsoil;  
 all from boulders, but no clear surfaces  
 Thick

16	13	13	18
15	18	18	16
12	14	14	12
16	16	16	18
13	13	5	13
Bu	NS	NS	13

FLATH BEAN: 87 cm N of GRANULISTEIN, 20 cm  
 or one rock high; larger cobbles here; 71°  
 orientation; topsoil & tips of rocks above  
 Bu  
 NS  
 Bu  
 Surf. Bu

12	23	12
31	31	18
14	14	13
21	21	18
12	12	7
8	8	8

106 Y (cont.)

WINEBAP: 20 cm high, 2-3 rocks, 20 orientations  
 2.25 m exposure E.W. maximally - to west approx  
 entry not considered, all in topsoil, same exposure  
 above ground surf. to south is a grade of rocks, in  
 clear surface

all	18	15	4
all	19	21	4
max hunch	21	-	4
	9	-11	2
	11	18	5

NEARWOST: 69 cm tall to W - ~~off~~ WINEBAP  
 28 cm high in center, 4.8 m ~~total~~ to  
 step in 1.17 to east dip stepped to south,  
 stepped in part 2 rock high 8 cm, 20 orientations  
 1.93 m east of west end is the  
 length of large stone construction, to east  
 is small whols + chunks, all in topsoil

Small	13	11	4
stone ore	9	15	4
	16	14	4
	15	12	3
	22	22	4

E.W. N.S. TRIDE

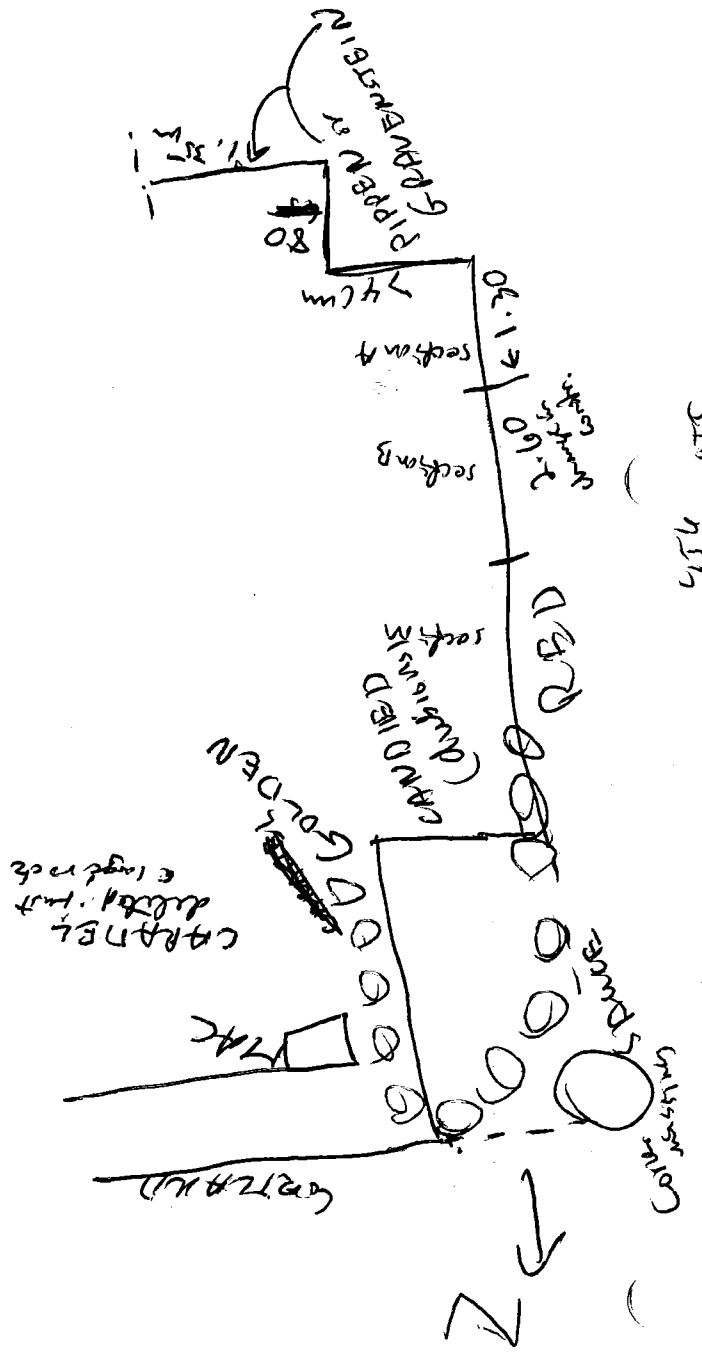
larger rocks chosen for flat faces, but small rocks  
 often great, like in the walls to the south

CORRLAND: 73°30' orientations, 4.76 m clear  
 map exposure, pass 5.5 cm further to W to low  
 on east, left only one stone trunk white  
 in center hunch at 24-30 on west  
 all in topsoil, no protrusion above ground surf.  
 2 rough courses in main + west E.W. TRIDE  
 sizes

14	11	9
14	13	10
16	13	10
14	11	3
14	11	3
36	20	4
36	20	4

pass. length 32

SJW 12519



CORTLAND: rock not shown for flat faces.

NU corner Ch. feature: the corner may not be in set, a circular feature is prob. not read. Instead E. features and -- the US line is called GOLDEN BU -- than there is the lower US running down + line; the corner is wrong because

RED is based US are on west side ch. Exposed in southern half. stands 6-8 m. (height) in large stone in most places, some times 2 stones, 11-21 cm high preserved. Section B can include of large stones of rock or artificial flat faces to west. Section C to North more

the rounded parts (sections A & C) seem to have smaller rocks, except of corners? All is smaller rocks, but no clear faces uncovered.

Numbered 1 as is section A to south

Sections	25	25	25
25	25	25	25
15	15	15	15
29	29	29	29
22	22	22	22

Section C to North more

13	13	13
12	12	12
7	7	7

fallen in good section

AZ = 1740

The change in construction for the stone areas do not have plate stones.

At the corner is a small feature we thought was a continuation of PILLING, but they do not give up. There is a possible hole 22 cm in diameter. It was dug out to depth of 20 cm below the rock surface. Surrounded by 7 stones. They must be a roof which could account for the soil differences.

GOLDEN: a US one which marks the end of GPTLAND + PAC, 32 cm above top of RBD preserved. Orientation 170° 30'. About 2-3 pebbles, no good coarsening but flat sides out of corner, rounded to south of corner. US Thick

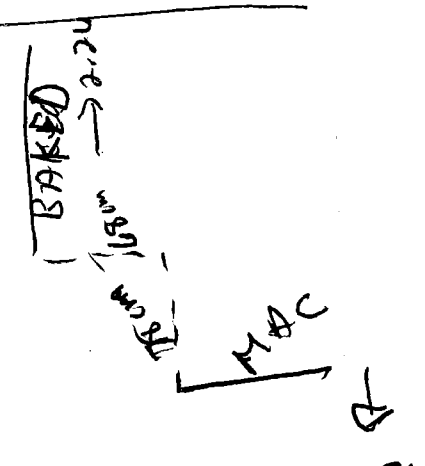
Corner 25	17	17	17	17	20	8
US	17	17	17	17	21	5
US	14	17	17	17	20	5
US	17	17	17	17	20	5

Continuation of RBD --  
 PIPPER / GRAVESTEIN: South wall, to east of west corner. 1 stone high, 7 stones; 72° orientation, all in topsoil. One is clear but not well-preserved, backed by earth. From bed small stones, no flat faces out. BU US Thick

Stone size	22	22	26	14
BU	22	22	26	14
US	22	22	26	14
US	22	22	26	14

MAC / GOLDEN corner to end Pass. GOLDEN 545 m

100% (cont)  
 The eastern basal from poss. inset. 36 cm between BAKED + west  
 face of ALLI GATE in sh. c. BAKED is same  
 high. BAKED is cobbly, some flat  
 faces out! about 3 shaves height,  
 no clear recessing. We did not  
 extend to the sh. SE corner, the  
 nor try to clarify terraces on the  
 east side. The east side is in  
 very poor condition



NO 6 X PEACH, PRUNE, + CURRANT

PEACH. Seems to under dig site of BAKED. PEACH  
 34 cm high in main trench 2 or 3 m across. No  
 recessing, large cobble bottom + top, smaller in between  
 PEACH has no clear corner, just different sizes +  
 ends in 1 poss. large rock. 100% orientation.  
 At south end, runs back ca. 97cm  
 before all rock disappears from back of  
 rock (east side) trench is 1m of  
 earth to CURRANT, an  
 Below base of PEACH is  
 PRUNE only. PRUNE has 3 stems at post, runs  
 58 cm long on under floor

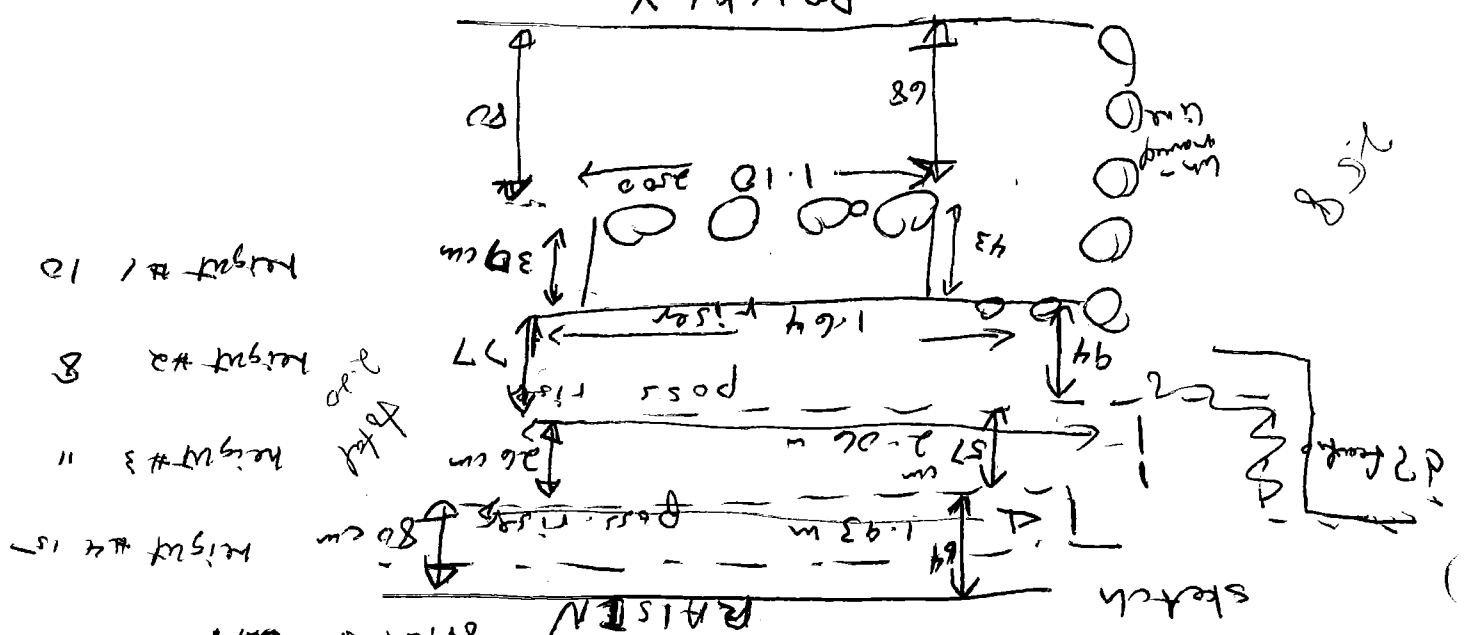
PRUNE	11	12	13	14	15	16	17	18	19
	28	24	30	22	28	21	4	4	5
	26	24	29	7	7	9	7	7	7

mass - porch under porch condition  
 in exposed south of trench wall.

106 X (cont.)  
 CURB CUT is 1-2 stones high, max hgt. 30 cm.  
 Oriented 3390.  
 sizes  
 US  
 BE  
 No road dust facing  
 No road dust facing

15	15	15
14	14	15
17	14	6
24	14	8
12	16	12
4	4	4

106 Z  
 PUTATIVE STEPS: on the south side Sh-8, the per. steps called T A H I T R A H  
 orientation 270



All in top soil. All cobble, few flat faces  
 sizes:

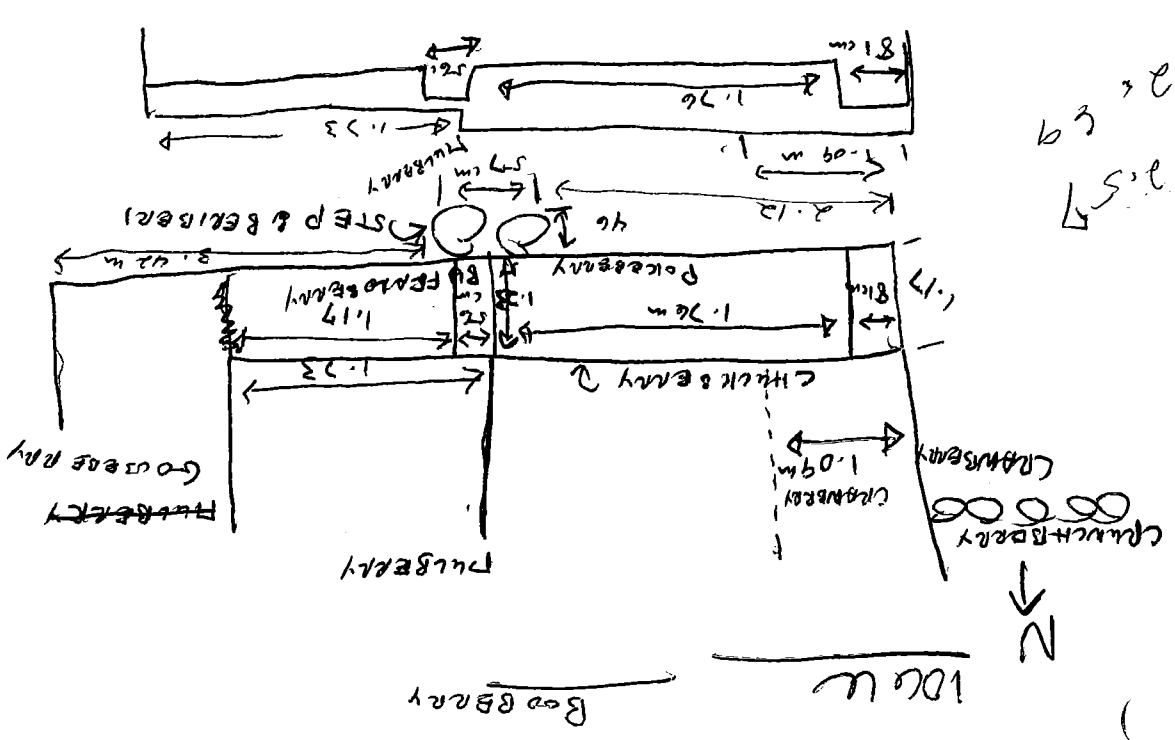
14	14	14
20	20	20
19	21	14
20	16	20
16	18	16
20	22	20
20	19	20
US	6	US
Truck	3	Truck
	4	
	4	
	6	
	6	
	5	

4



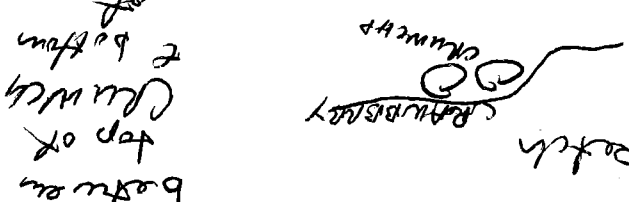
CRABBERRY is not clear as a construction block on the N side of the Br. CRABBERRY  
 CRABBERRY is not clear as a construction block on the N side of the Br. CRABBERRY  
 NS' top is 22 cm below preserved top POKEBERRY  
 Base of step roughly  $\approx$  base POKEBERRY... not clear  
 construction - 5-18 cm gap between POKEBERRY + BERBERRY  
 CRACK BERRY ca. 25 cm high; top shows some slight on surface. Flat faces to south, but not cut faces  
 Conditions sequence: CRABBERRY seems to be the core. CRACK BERRY is abutted by RUFARBERRY, the NS' west wall dividing the southern rooms.

BERBERRY step: clearly 2 steps Br 10 cm high, 1 stone NS' top 22 cm below preserved top POKEBERRY  
 POKEBERRY: 3 steps high, 33 cm, roughly curved some flat/west faces, others not. Flat! some chunking stones used  
 CRACKBERRY beginning 1-09 m east of west face CRABBERRY (seems to run over the surface of the small junction room - but the west of all clear  
 CRACKBERRY beginning 1-09 m east of west face CRABBERRY (seems to run over the surface of the small junction room - but the west of all clear

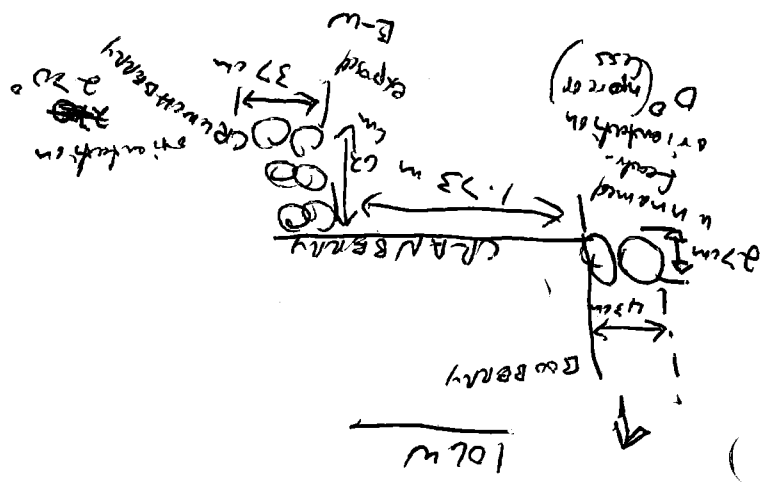


2.57  
 2.59

CRUNCHBERKY seems to be an earlier feature. CRANBERKY dips to N from CRUNCHBERKY. 8 cm earth between CRUNCHBERKY top of CRUNCHBERKY to bottom of CRANBERKY.



The unward feature also seems to run under CRANBERKY. The NW corner CRAN is deeper than SW, at least by eye. Certainly lower than where CRAN runs over CRUNCH.



To north of CRUNCH is a ridge line of a possible older feature. It rises up of the south end of STRAWBERKY.

STRAWBERKY: does not continue to south part of stone disclosed in the trench

1.41 to disturbance, 1.23 total mark-length

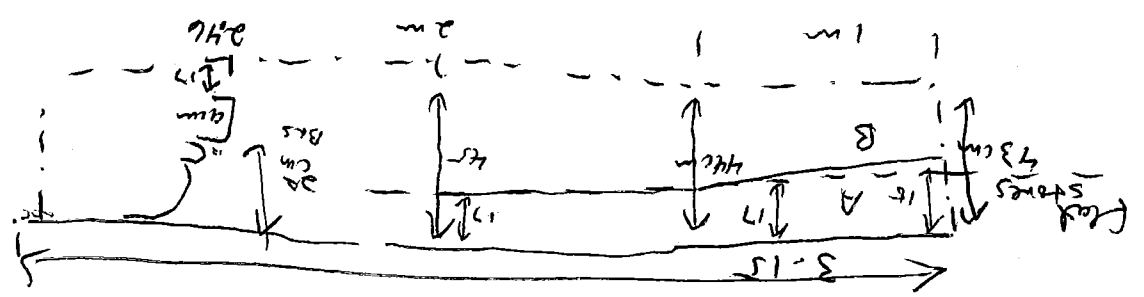
North of center trench STRAWBERKY is a steep rise in high courses large rocks w/ thinners in between + a few for footing. Rock sizes:

BU	36	US	36	thick 16
to corner	32		32	10
to north	22		22	12
corner	35		35	11
clunkers	17		17	10
	7		7	4
	10		10	3
	11		11	5

STRAWBERKY left the cornerstone, it goes N directly for 4m, after that it jumble. Tumble goes 1.52N w/ marks -- this may be back of an last added former, great part to BLUEBERKY + BOWSERBERKY

106 W North Extension pit  
 The North extension pit appears to have been on a surface of flat laid thin cobbles, the tunnel/sh on the NW corner of the site.

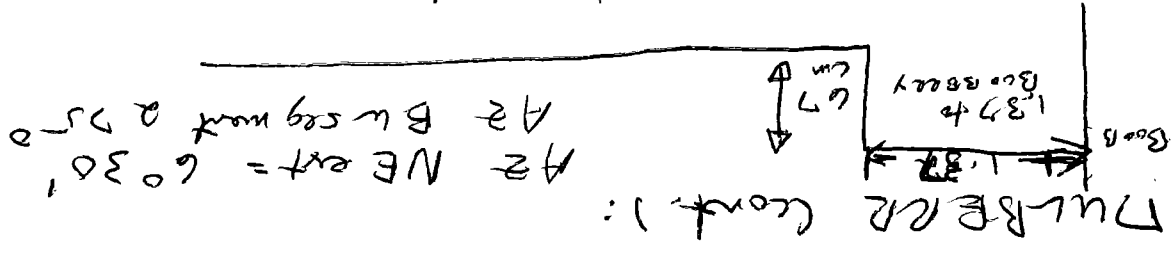
Sketch CHERLY



CHERY is composed of English rocks in west of its 93 cm BW exposure, Azimuth =  $270^{\circ}30'$ .  
 2 clear courses, 31 cm high, 60 from course projected  
 12-18 cm North of 2nd course  
 1st course 30  
 2nd course 23

1st course	30	32	34	10	8	10
2nd course	23	32	34	10	8	10
	21	20	24	20		

Plot stone terrace 91 cm south from pit (ward), layer 14 cm thick



1.00 to poss. stop up/and wall  
 ? wall line/poss.  
 in center

22

106 W  
 BLACK BERRY: goes 91cm to west of sh. corner, then stops - just east of poss. tumble, base of tumble is higher than base of BLACK BERRY - ca. 10 cm higher. CLAY is under tumble. GOOSE BERRY is (or is) of Red BERRY? but is 22cm into the clay level, tumble is 20cm above bottom of GOOSE BERRY.

GOOSE BERRY is 26 cm high, ca. 5 courses. Stones are like those in center trench, except west base.

course	NS	EW
base	39	20
	22	14
	29	14

To north of BLACK BERRY is a lot of rocks, Beginning of GOOSE BERRY, & running 1.2 cm east. This ends at about where BLACK BERRY begins to be a real wall. The layer is 30cm thick, densest part. This is prob. an unresolved added layer of clay ruins under these stones, & two bars are 12 cm in the clay.



LOG 2  
 BASE OF  
 for the 2 sections addition. BAKED in 47 cm using datum rods

using same zero pt.

lengths.

- 2.90m
- 4.19m
- 5.57m
- 2.08m
- 90m

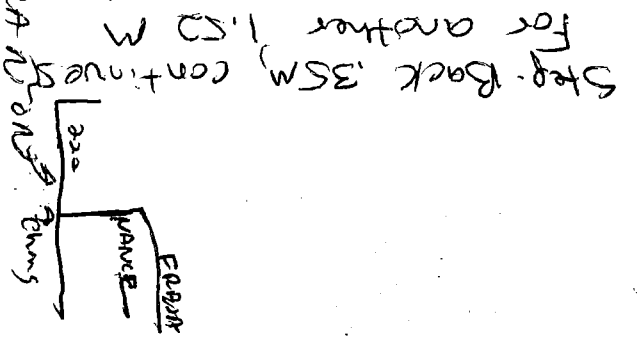
Longman Rd  
 Refused  
 Max  
 Green  
 Longman Rd

90m

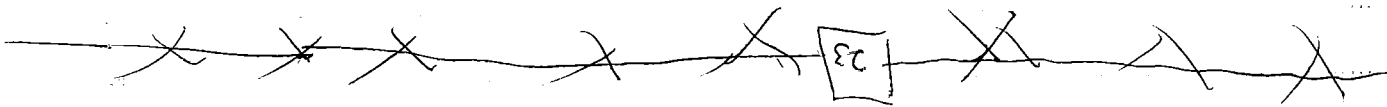
BB Norm side is about 100m  
 control block in post front or long N-S break



total length of 2 courses is 8m



Step-Back 35M, continue for another 1.50 M



23

Z Art  
Rooms

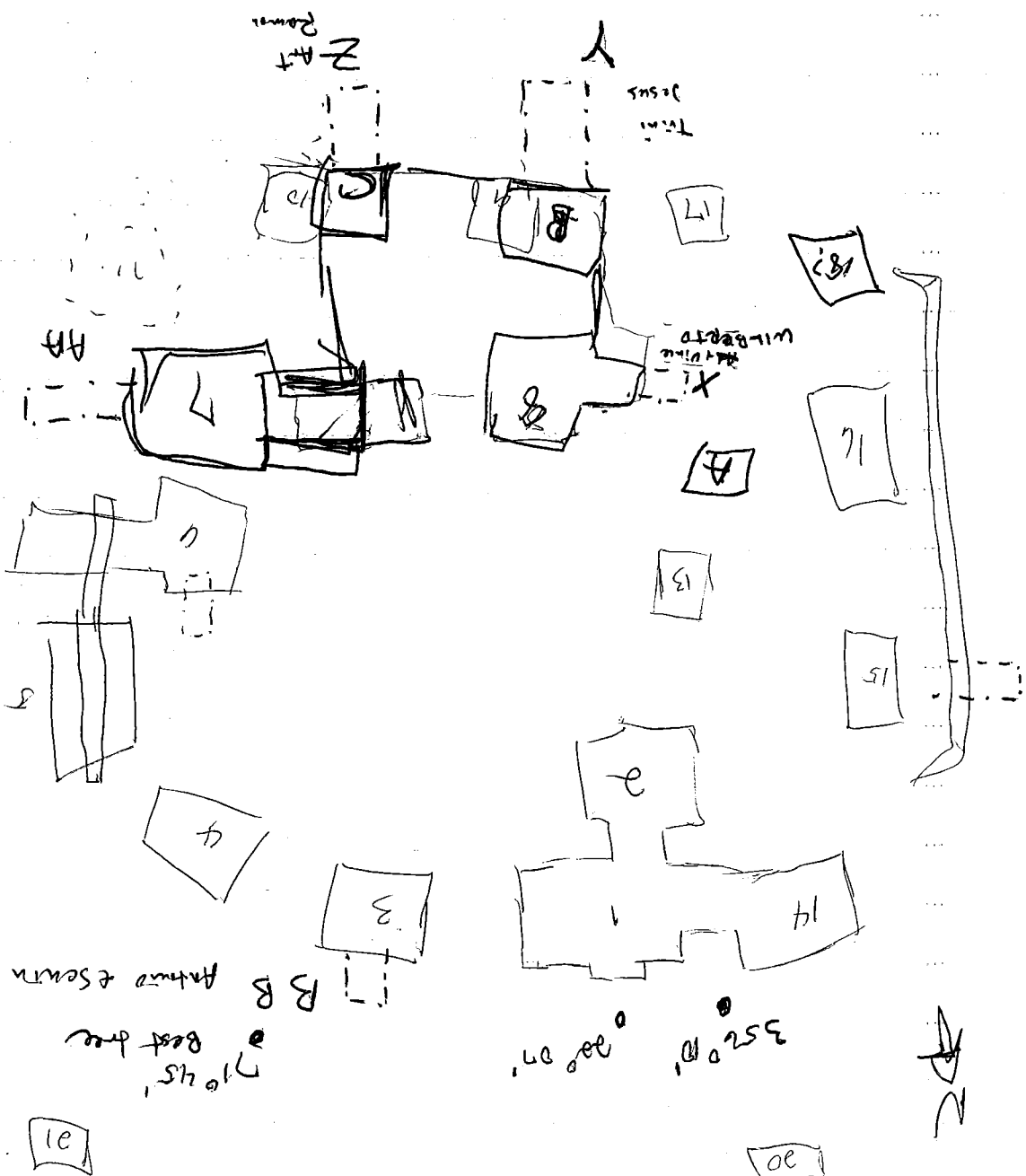
Tom  
Jesus

Antonio Clouds  
old guy  
had eye

Antonio  
Tower

WILBERTO  
Antonio

W  
Leo  
Soy



coffee  
 vanilla  
 seed  
 yellow  
 banana  
 pole  
 bush  
 string  
 soy

long green  
 mandarin  
 blue  
 black  
 green  
 brown

pink  
 mango  
 starfruit  
 lemon  
 lime  
 orange  
 grapefruit  
 grape  
 apple  
 pear  
 peach  
 cherry  
 strawberry  
 raspberry  
 blueberry  
 blackberry  
 raspberry  
 strawberry  
 orange  
 grapefruit  
 grape  
 apple  
 pear  
 peach  
 cherry  
 strawberry  
 raspberry  
 blueberry  
 blackberry

New King  
 Queen Anne  
 Cherry  
 Chokeberry  
 gooseberry  
 pikeberry  
 cranberry  
 boysenberry  
 loganberry  
 blackberry  
 buffalo berry  
 chude berry  
 cherry  
 Ring  
 Queen Anne  
 (Thrasimo)

red  
 black  
 lady  
 crab  
~~lemon~~  
~~apple~~  
~~green~~  
~~yellow~~  
~~orange~~  
~~peach~~  
~~cherry~~  
~~strawberry~~  
~~raspberry~~  
~~blueberry~~  
~~blackberry~~  
~~gooseberry~~  
~~pikeberry~~  
~~cranberry~~  
~~boysenberry~~  
~~loganberry~~  
~~blackberry~~  
~~buffalo berry~~  
~~chude berry~~  
~~cherry~~  
~~Ring~~  
~~Queen Anne~~  
 (Thrasimo)

blue  
 black  
 green  
 brown

mandarin  
 orange  
 grapefruit  
 grape  
 apple  
 pear  
 peach  
 cherry  
 strawberry  
 raspberry  
 blueberry  
 blackberry

lemon  
 lime  
 orange  
 grapefruit  
 grape  
 apple  
 pear  
 peach  
 cherry  
 strawberry  
 raspberry  
 blueberry  
 blackberry

mandarin  
 orange  
 grapefruit  
 grape  
 apple  
 pear  
 peach  
 cherry  
 strawberry  
 raspberry  
 blueberry  
 blackberry

apple  
 pear  
 peach  
 cherry  
 strawberry  
 raspberry  
 blueberry  
 blackberry

lemon  
 lime  
 orange  
 grapefruit  
 grape  
 apple  
 pear  
 peach  
 cherry  
 strawberry  
 raspberry  
 blueberry  
 blackberry

mandarin  
 orange  
 grapefruit  
 grape  
 apple  
 pear  
 peach  
 cherry  
 strawberry  
 raspberry  
 blueberry  
 blackberry

pomme  
 raisin  
 melon  
 pomelo

lemon  
 lime  
 orange  
 grapefruit  
 grape  
 apple  
 pear  
 peach  
 cherry  
 strawberry  
 raspberry  
 blueberry  
 blackberry

mandarin  
 orange  
 grapefruit  
 grape  
 apple  
 pear  
 peach  
 cherry  
 strawberry  
 raspberry  
 blueberry  
 blackberry

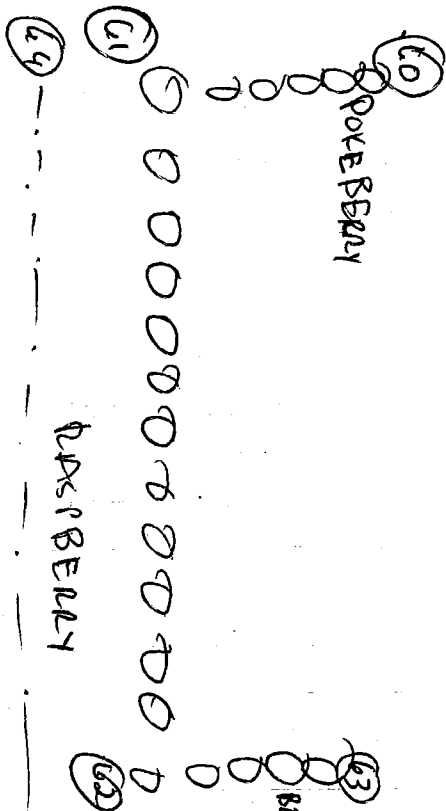
pomme  
 raisin  
 melon  
 pomelo

lemon  
 lime  
 orange  
 grapefruit  
 grape  
 apple  
 pear  
 peach  
 cherry  
 strawberry  
 raspberry  
 blueberry  
 blackberry

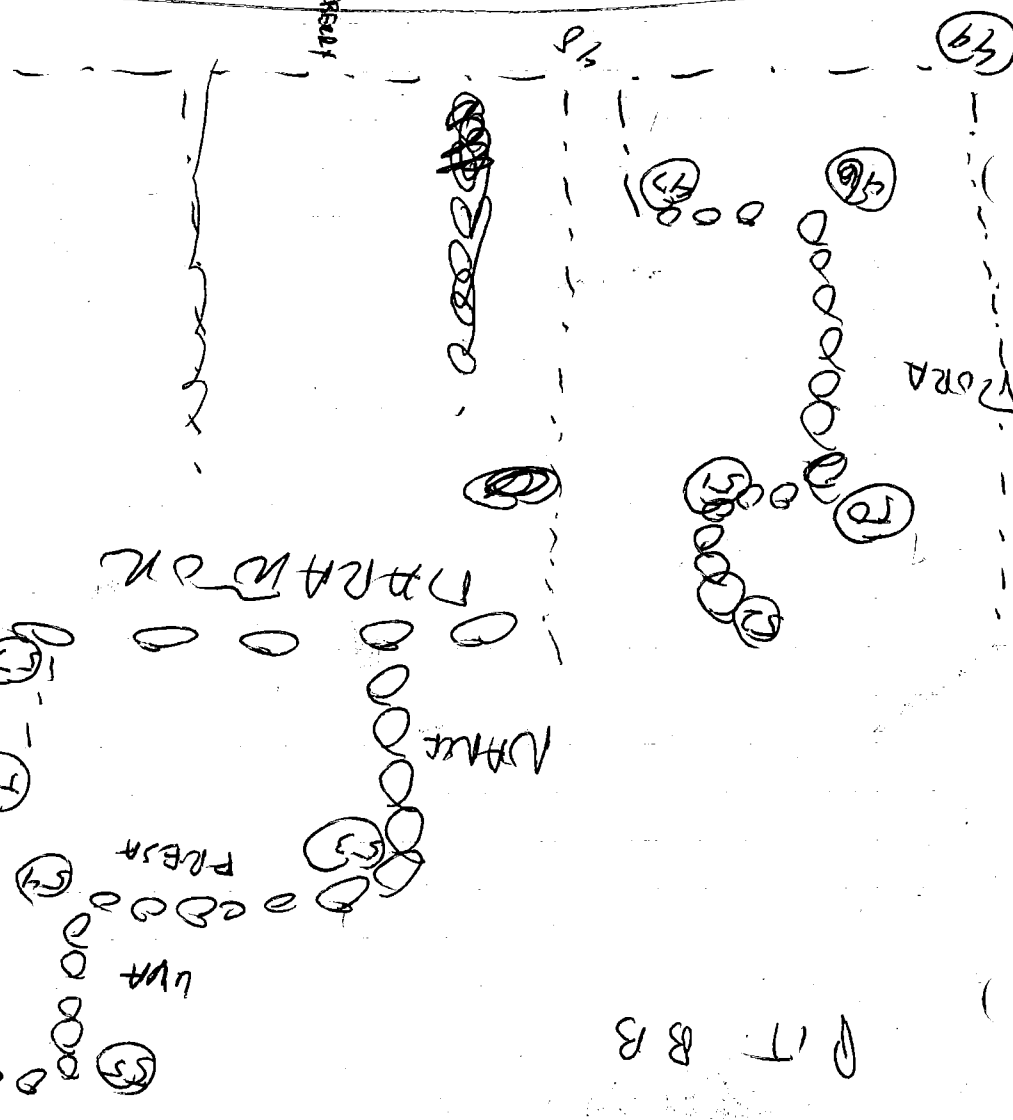
mandarin  
 orange  
 grapefruit  
 grape  
 apple  
 pear  
 peach  
 cherry  
 strawberry  
 raspberry  
 blueberry  
 blackberry

AZ

PIT W

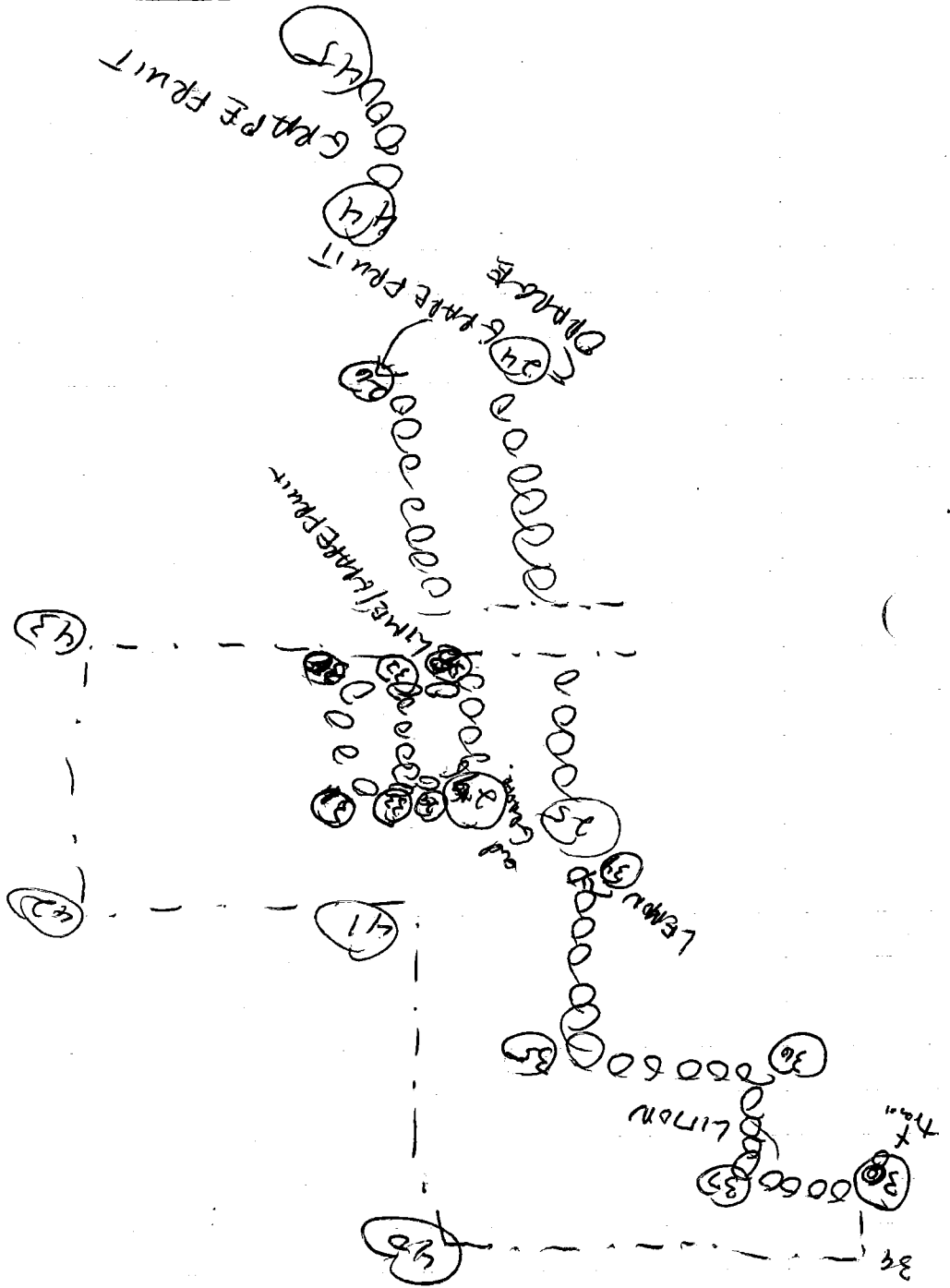


PIT B B



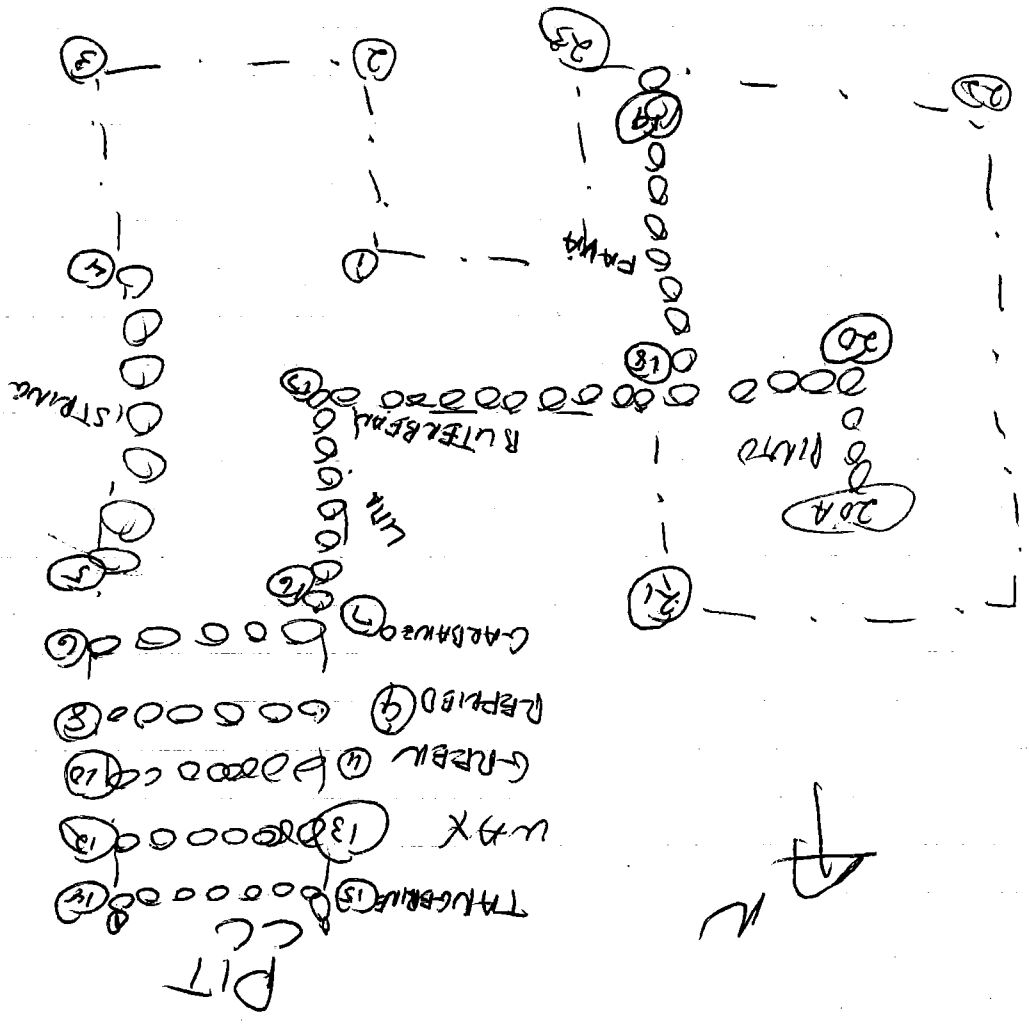
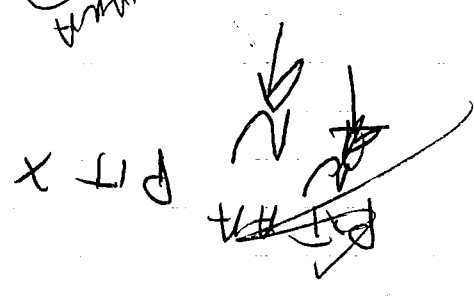
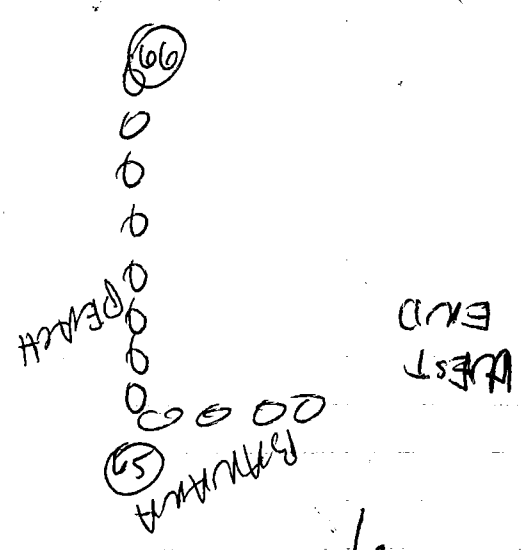
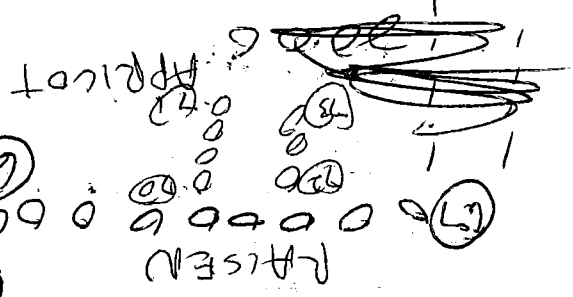
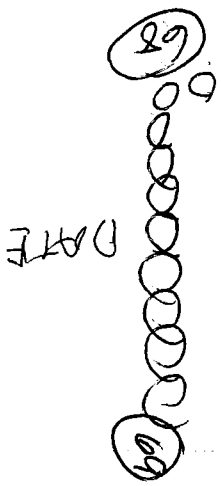
TANGERINE?  
 GARBANZO?  
 PEACH?  
 RAISIN DATE  
 APRICOT

Matate (mg) / 106 AK/31 / (from Gropelwick)  
 23 cm / 47 BGS



Handwritten symbols and text at the bottom of the page, including a star-like shape and the word "PIT" written twice.

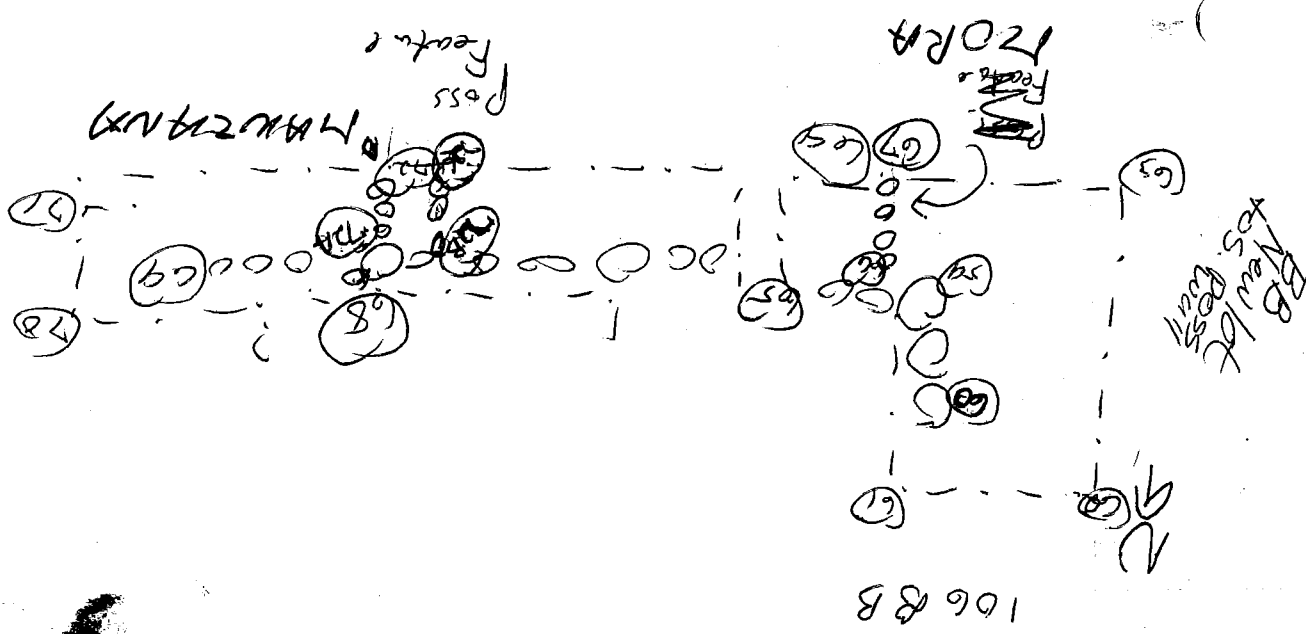
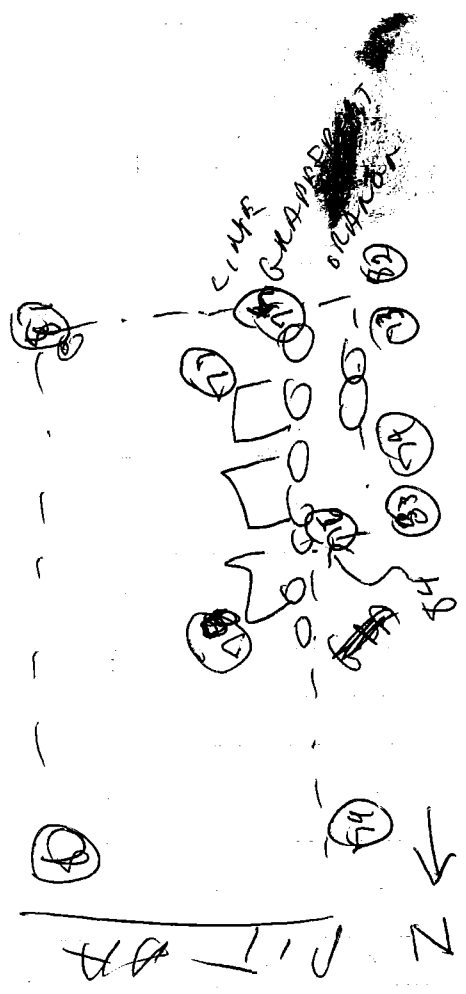
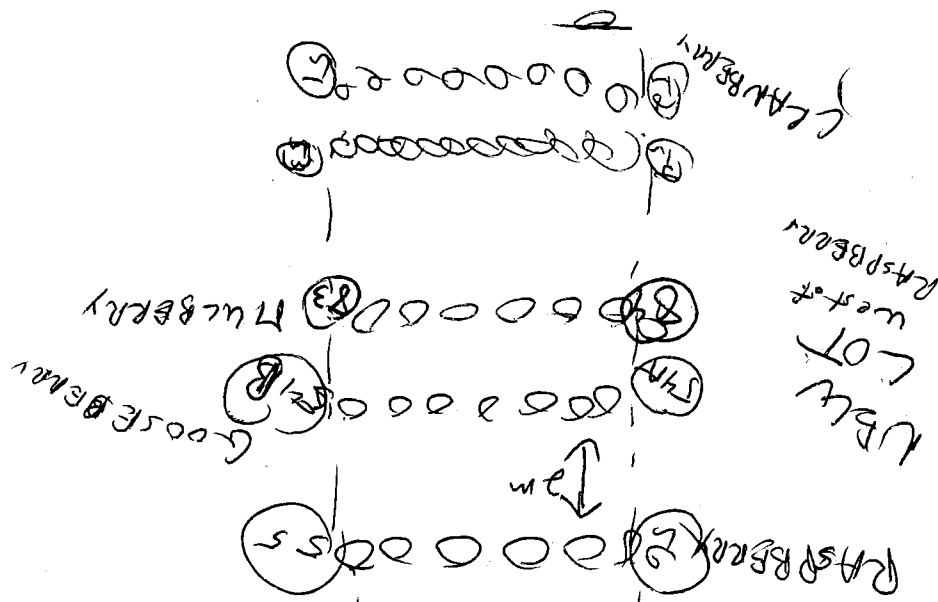


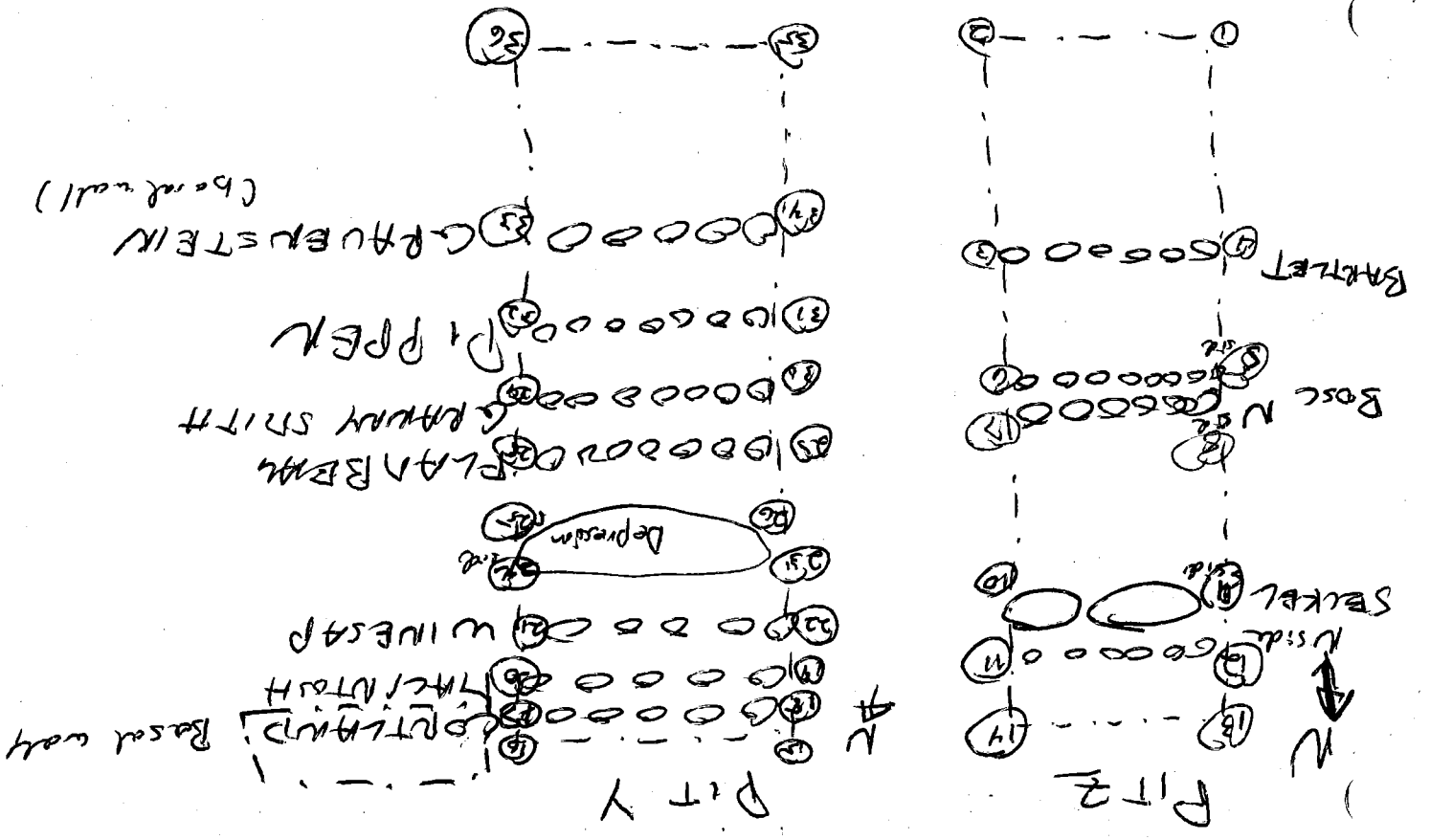
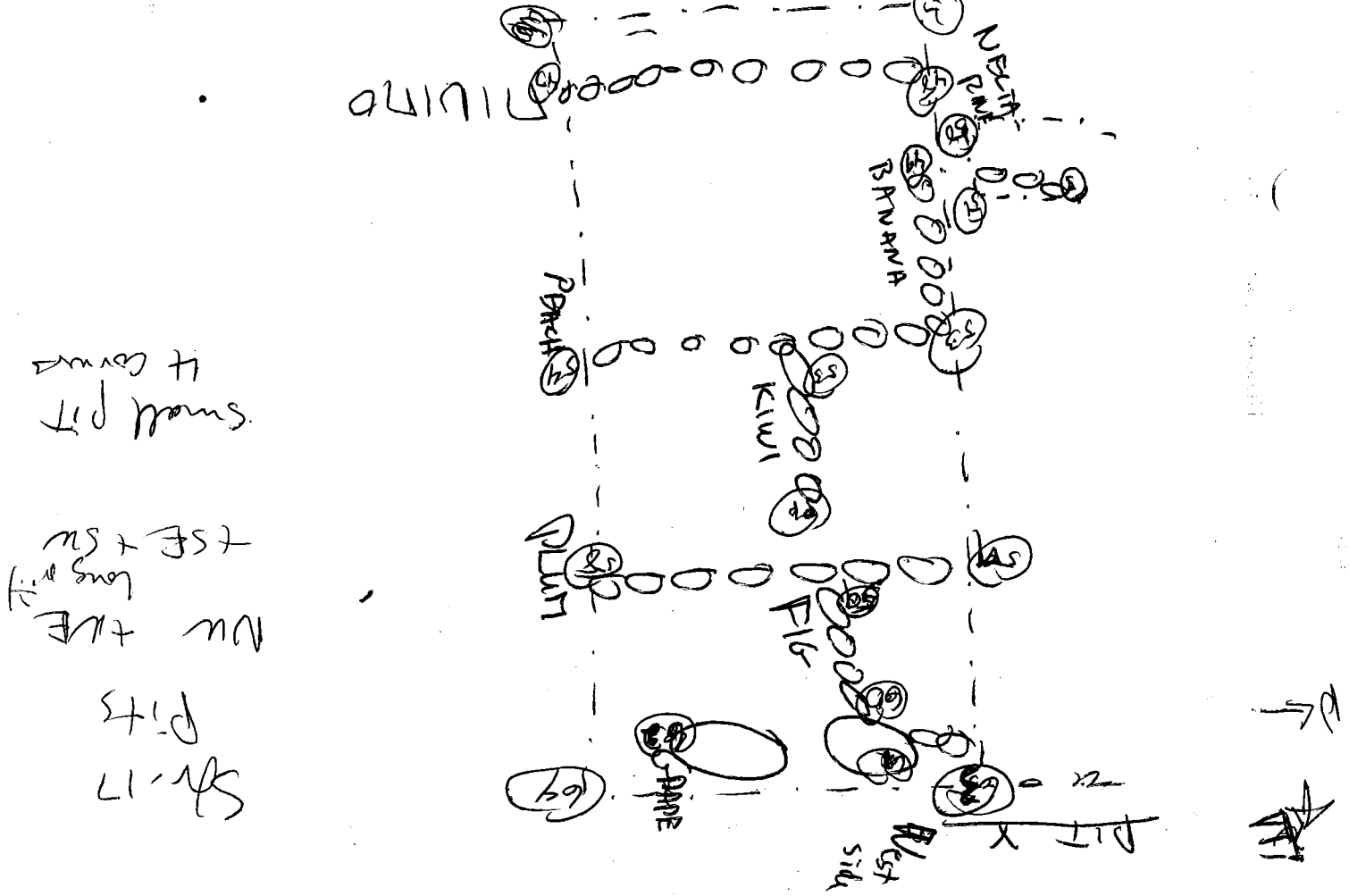


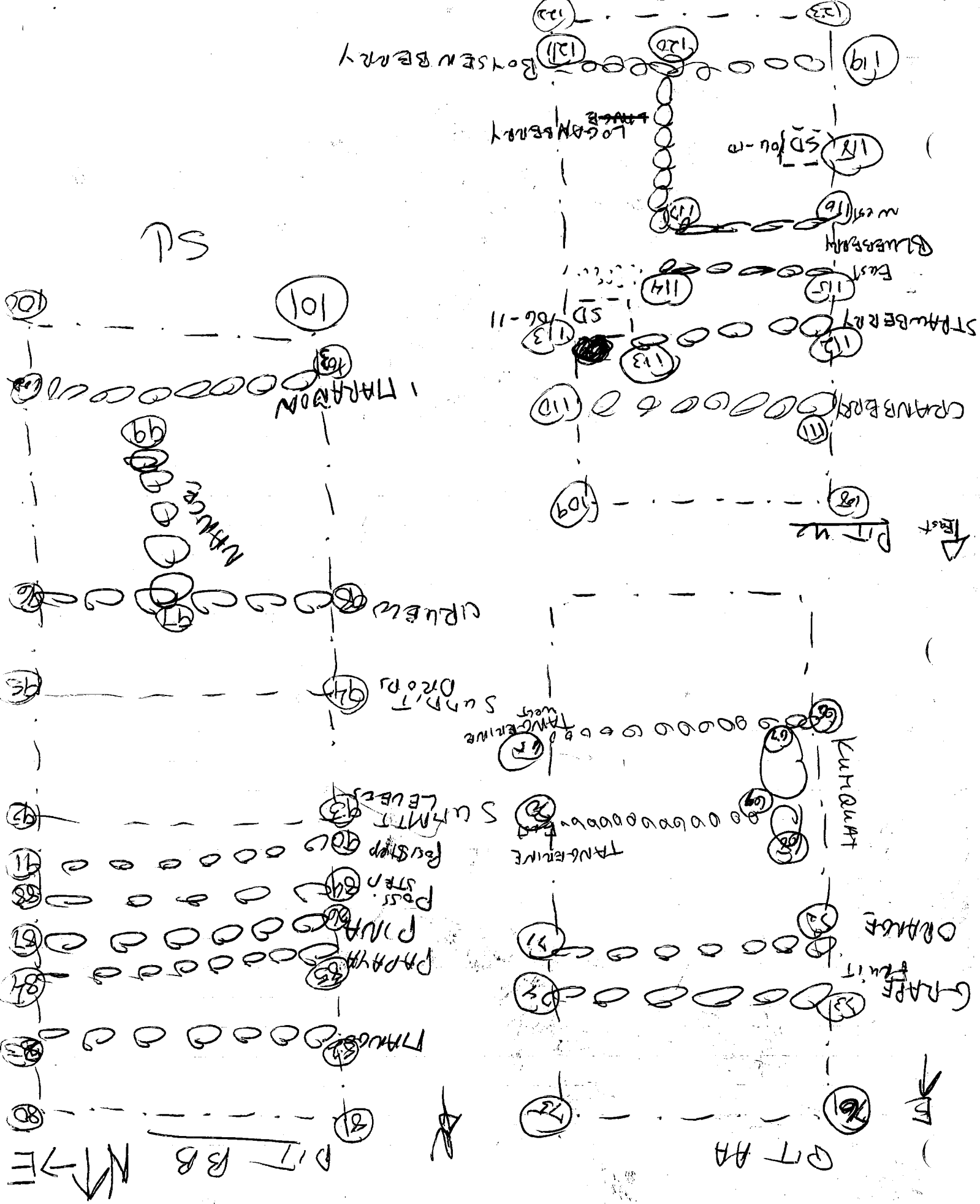
WPIT Restock

Boysberry 47 x 48  
Strawberry 49 x 50  
Tulberry 83 x 84

AF







Lista de los Trabajadores de Excavación

- Geopoldo Paz
- Trinidad Pineda
- Tomás Fernández
- Sergio Chabaz
- Antonio Leiva
- Sergio Bay
- Ramon Antonio Leiva
- Claudio Pineda

Trees

West 350' 10'

width 22' 07'

East (Beaten) 71' 45'

Nombres de los que cargan el carro al Lunes

30

Visente Mioroz

Antonio Mioroz

Jesús Leiva

Alfaro Mahterrosa

15 Sat

8 Sat

1 Sat

Beato - Tristes, Tristes y Viernes

Picado - Tristes Fr.



Point  
french corner  
french corner

D.S.F.  
41.22  
40.21

M.D.  
2370  
2349

2  
186.50  
187.20

- 1
- 2
- 3
- 4
- 5
- 6
- 7
- 8
- 9
- 10
- 11
- 12
- 13
- 14
- 15
- 16
- 17
- 18
- 19
- 20
- 21
- 22
- 23
- 24
- 25
- 26
- 27
- 28
- 29
- 30
- 31
- 32
- 33
- 34
- 35
- 36
- 37

X

Raspberry + Strawberry corner  
 Raspberry + Pokberry corner  
 Pokberry + Cranberry corner  
 Cranberry + Chudberry corner  
 Chudberry + Gooseberry corner  
 Chukberry + Mulberry corner  
 Mulberry + Blackberry corner  
 Mulberry + Beeberry corner  
 Beeberry + Cranberry corner  
 North end Gooseberry + trench  
 S. end Strawberry not in trench  
 Corner Strawberry + Frankberry  
 Frankberry east end + trench  
 NW trench corner  
 trench corner  
 trench corner  
 SW trench corner  
 West end CRUNCH not in trench  
 East end CRUNCH not in trench  
 french corner  
 french corner  
 french corner  
 106 AA Sunhst S + trench  
 Sunhst N + trench  
 Indian River E not trench  
 Indian River W not trench  
 tangle N + trench  
 tangle S + trench  
 W side fence  
 N end Pink in trench  
 S end Pink + trench  
 S end permanent trench  
 N end  
 Avacado E + trench  
 Avacado - as far as we can see to West  
 Alloc W in trench  
 Alloc E

1207° 30'  
 2203° 06'  
 2222° 01'  
 2228° 45'  
 217° 45'  
 210° 10'  
 216° 52'  
 219° 35'  
 235° 0'  
 223° 0'  
 237° 36'  
 246° 10'  
 245° 10'  
 245° 15'  
 238° 45'  
 234° 15'  
 232° 15'  
 222° 45'  
 229° 30'  
 245° 10'  
 251° 01'  
 252° 45'  
 145° 45'  
 145° 01'  
 145° 45'  
 145° 45'  
 149° 01'  
 149° 01'  
 149° 51'  
 147° 40'  
 146° 45'  
 162° 50'  
 160° 45'  
 162° 50'  
 194° 15'  
 196° 15'  
 194° 15'

2440  
 2344  
 2090  
 1833  
 1751  
 1841  
 1860  
 1914  
 1735  
 1802  
 2430  
 2272  
~~2232~~  
~~2232~~  
 1913  
 1940  
 1912  
 2077  
 2051  
 2061  
 2269  
 2357  
 2448  
 1817  
 1828  
 1793  
 1737  
 1656  
 1614  
 1361  
 1717  
 1715  
 1492  
 1592  
 2060  
 2098  
 2068  
 2085

Middle hair Distance  
 10.42  
 14.62  
 17.05  
 16.14  
 14.88  
 14.00  
 11.18  
 10.18  
 13.00  
 12.30  
 16.47  
 15.17  
 13.87  
 13.87  
 12.97  
 14.23  
 15.01  
 17.75  
 14.99  
 14.64  
 14.31  
 13.68  
 14.65  
 36.30  
 35.58  
 35.55  
 35.10  
 34.92  
 35.61  
 31.91  
 29.70  
 30.42  
 30.85  
 27.97  
 21.15  
 21.2  
 25.81  
 2085



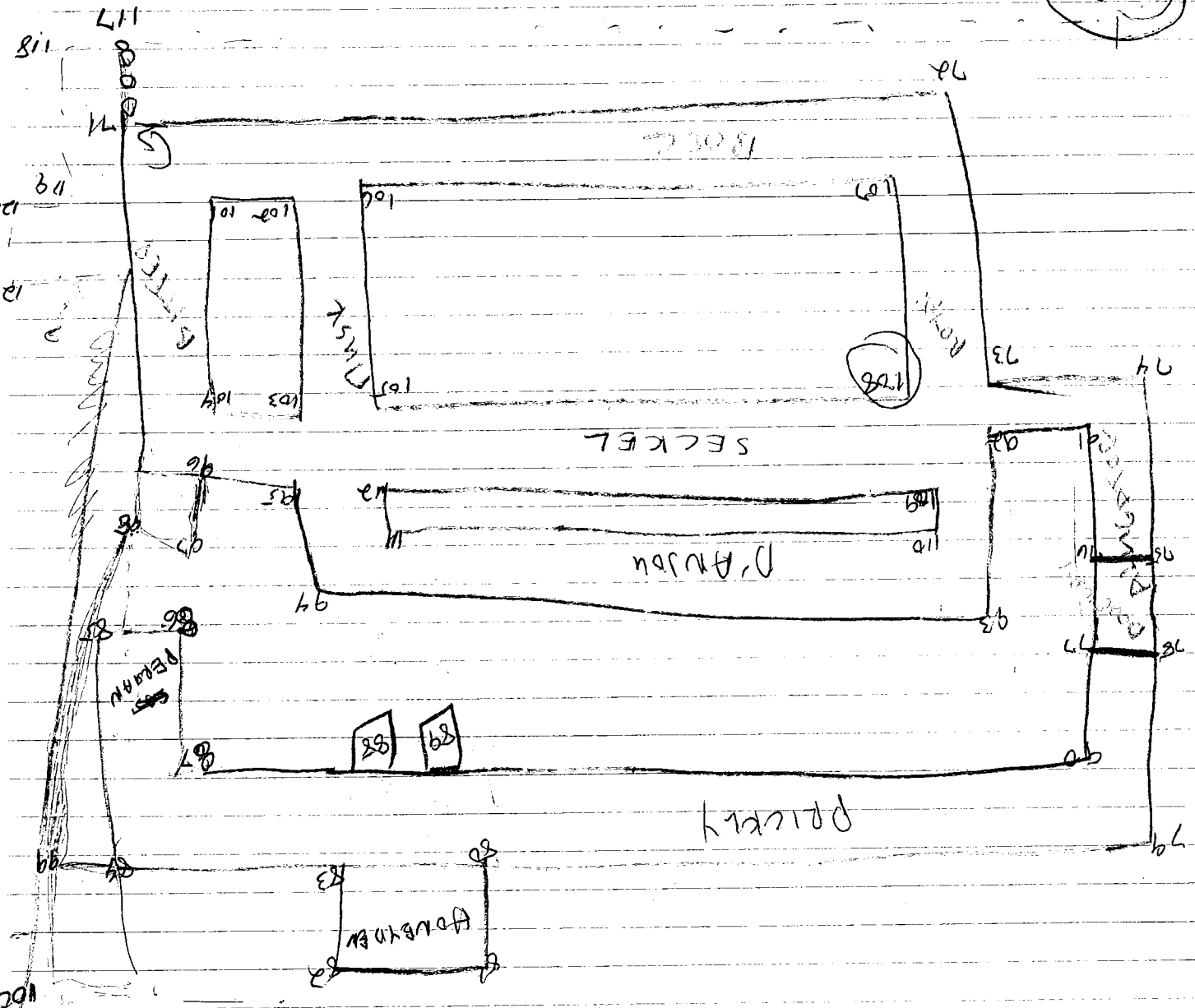
Instrument H:

POINT

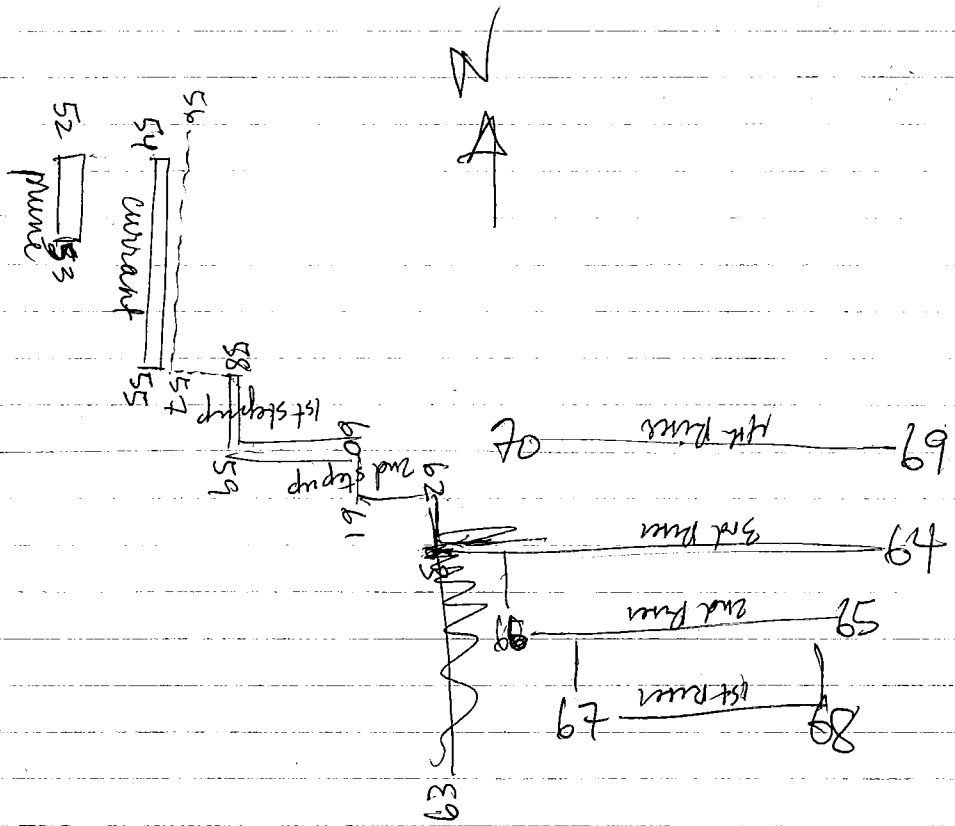
Point	Dist	Angle	Distance	Description
106 Z	33.72m	165° 50'	2082	S end U61 - SW side
2	32.62	165° 15'	1940	N end U61 - NW side
3	30.49	164° 0'	2038	S end U61
4	28.34	163° 50'	2014	Mandarin, U61 corner
5	29.34	155° 25'	1958	E end Mandarin
6	28.84	150° 0'	1971	E end trench
7	27.17	163° 10'	1998	S end trench
8	37.35	144° 12'	2265	106 AA N end Grapefruit - 3 side
9	40.50	146° 28'	2679	Grapefruit, corner to corner
10	39.50	150° 0'	2382	W end Osborne
11	40.06	150° 10'	2484	W end trench
12	41.13	146° 0'	2536	trench corner
13	37.62	143° 16'	2251	N end trench
14	38.24	151° 0'	2141	106 CC Refused E end
15	37.30	153° 45'	2035	Refused W end
16	36.93	156° 30'	1848	Green W end
17	37.36	150° 28'	1921	Green E end
18	37.11	149° 30'	1834	Wax E end
19	35.69	155° 45'	1705	Wax W end
20	34.67	151° 45'	1528	Taligernie SW corner
21	34.83	150° 45'	1484	Taligernie SE corner
22	32.70	150° 35'	1372	Taligernie NE corner
23	33.03	149° 05'	1438	Taligernie NW corner
24	33.73	143° 35'	1372	106 Y
25	33.05	149° 10'	2319	Corner E end
26	32.61	187° 51'	2327	Middle of Offset (Mandarin)
27	33.84	189° 05'	2332	NE point on " "
28	33.76	187° 30'	2201	SW point on " "
29	33.99	188° 50'	2285	E corner of Sephark
30	38.34	188° 15'	2393	Pool, Sephark corner
31	37.37	188° 40'	2340	S end Rd (corner w/ sturcax)
32	37.04	190° 45'	2278	SW corner sturcax trench
33	37.24	190° 45'	2278	NW corner sturcax trench
34	34.13	186° 45'	2055	S corner and Golden
35	33.07	187° 15'	2109	corner Golden Mandarin
36	32.42	189° 05'	2321	corner Cortland 'Stop up, O 13
37	32.67	189° 35'	2375	NE pt corner
38	32.67	190° 00'	2321	NW pt corner
39	28.16	192° 25'	2335	S end Mandarin



112



113  
 114  
 115  
 116  
 117  
 118  
 119  
 120  
 121  
 122



Sh A 4-5 x 4-5

Core Block 4.85 x 5.20

total US  
PARADISE + PHASE  
(4.0 m  
Trench on South

Sh 3 LIZARDO - PAPAIA ca. 90 cm

PAPAIA - PAPAIA 18

PAPAIA - PAPAIA 3m post. 1 step up in between

DELOCATOR to ~~DELOCATOR~~

S. MARRADON to S side ~~2.50~~

DETAILS: 4.85

MEL. to TARMAN 8.45

with to PARADISE on 3.35

GAFFER-TARMAN 2.55

GAFFER-TARMAN 2.55

GAFFER to ORANGE 52

ORANGE - TARMAN 2.05

TARMAN - TARMAN 1.95

TARMAN 1.00 m

TARMAN to SEVILLE 7.75

WALL - SEVILLE 1.25

total EU  
GRAFFER to UGH  
13.50 m  
12.30  
5.00  
13.50  
Total US ca. 7.00  
240 GAFFER to TARMAN  
REPAIR in 6 cm  
GAFFER to 5 cm deep  
70  
Sr. 7 south side LITH 1.00 m

0.75 GAFFER to UGH

0.75 GAFFER to UGH

Sh 8 EU 8.82 PARCH TO DATE

BANANA 1.4 m EU

DATE to PARCH 8.8 summit 1.00 EU big rocks (GRAFFER) 4.80 max

6 Grass 1 to 1.6 m

US max 5.50 w/o outlet ca. 1.00

GAFFER - GAFFER 2.00

GAFFER - GAFFER 9.35

GAFFER - GAFFER 1.60

OUT - - BUING boom using ca.

PARCH - BOTSEW

Sh 15

13.85  
TARMAN - PARCH 9.55

DATE - UGH ca. 5.40 } at 9.20  
GAFFER to UGH ca. 5.50

Sh B U 3 clear Grass CONTAINERS 80 cm PARCH 70

5 GAFFER to PARCH 50 PIPER to GRASS 50

GAFFER to PARCH 1-1.10

summit PARCH to UGH 4.00 GAFFER to UGH 5.00

total US ca. 50

Sh C

BRING FROM BEST - ORANGE 1.90 next 2.90 EU next 3.90

BEST - RICKLY next 3.10 next 4.30

GAFFER down next 4.30 x 1.25  
GAFFER on 4.65 x 1.00 w/

not only  
not directly

US max 4.80

Recorrection

you -- provide a more detailed context for posting work done previously  
goals: 1. understanding of L-cl - sch - forum, construction (tech)

sizes, esp. rooms

2 - functional differences -- 17g.us - small, workshops

poss. circum. orientations / uses

choice of 106:

previous work: tested src 1, 2, 5, 6, 8, 13, 17, 21, 22

largely axial trenching (1, 2, 5, east proj. 6, 13, 17)

some work on basal dimensions, through (a) 9

second trench perpendicular to (1, 17) or (1, 9)

b) following basal plat-facings (1, 5)

clearing limited to a) shallow (partial bldg)

b) summit shrubs - 1, 5, where rooms

w/ within debris found

#106 in good pres. -- rooms esp. encouraging

also relatively shallow

interesting diff. from N shrub 5, 2

rest of str.

time & money necessitated 15 days approx. time we able to field 12 - 16 workers

covered on following:

① shr. 3: east of 1 in N line, 2 connected

to examine N-S direction

look for rooms

connections w/ shr. 1, N basal conchs

86-5-1

26 May 1982

Rained all night and at dawn. Dribbled on the way to the site.

We wound up w/ 13 guys. I can't fire any one, so will keep them on. We have 4 pits open. Most of the guys have worked before, so I anticipate no problems.

We have forgotten the map of the site, so cannot exactly number all the structures. Some shrs. therefore have other designations.

106 RB

We stand here w/ 1m BUX and 1m US pit on the North side of str. 3. We are trying to see if there is a North-south distinction in artifacts here similar to that on str. 1. The northern meter of the pit is mostly dirt, but at the midpoint stones begin to appear. They look very rounded, but there is a possible line at ca. 1.3 m south of the north face. We are removing the rocks north of the possible line.

After removal of a few stones in the northern square meter, it is clear that there are more boulders. Some are going down here. The first level is 27 cm at the NW corner. They will go down to 40 cm. The southern m 2 will be untouched.

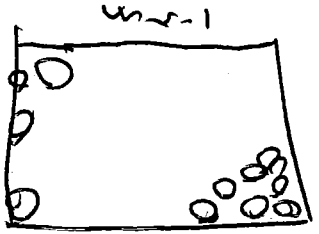
106 X

We began by laying out a long pit B-W over the west side of str. 3. The first excavation was in the western 1m US x 1.5m B-W segment. There we encountered a number of rocks, but singular in appearance/arrangement. The rocks are in the western portion. They were through cleared land the square was excavated deeper in its early side, where there are no rocks. The rocks do seem to

22 May 82  
had feature (but one relating to the sh. to the west  
which I believe is #16). We have decided  
to leave this for the present, and have cast into  
sh. 8.

106 W

We have set this up well west of the pit-like  
trench. In the first 1.5 m E-W segment some stones  
appeared in the east face and in the NW corner. More  
in the NW appeared to make a NE-  
SW running line. Most on the  
east seemed more like pebbles.  
We dug down in between the two  
putative features. The eastern rock  
definitely appeared to be a flint.  
They were removed, and nothing  
but dirt is below them. The  
NW rock, much flatter in appearance,  
also had no depth. They were removed as well.



Sketch 106 W

Spuds are coming out below the 10-15 cm of soil.  
Sylvia thinks the pebbles are odd, but I think they  
may just be wet. Our dig was relatively unexciting.  
Leo + Sergio are digging deeper in the same section. The  
soil has changed to a clayey well, still with strands.

106 Y

We set this up to the east any possible trench. It is  
a N-S axial on Sh. B. The original 1-E-W 1.5 m  
N-S section in the southern part of the trench corresponds  
on rocks at ca. 12-15 cm B&S. Unsure about what  
they meant, we did a 1x1 m southern extension.  
There we encountered few rocks, but lots of strands.  
They are moving down in the south extension.

26 July 1984

P86-5-3

106 Z  
This was set up with logic similar to 106 Y - to start way south of any potential terrace.

106 B  
Down on more rocks, saw a log 9 m extension to the north to see if we could get out the stones. Stones come out in the original southern m<sup>2</sup> from ca 20 cm - 40 cm BGS.

106 W  
Stones continue in fairly large quantities. We are going down to 55 cm BGS to try to get to the bottom

106 X  
Nothing in the 1.5-2.5 m section - we are extending east 50 cm at same level BGS

106 Y  
St. II getting shards - will go down 49-59 BGS. This is bed with the lower clay level - the chunks 37 BGS at 67.5. Lower mar. A probable hand-made figure came out here.

This is a fairly worthless pit - all earth, virtually no shards. Finally, 25-3.5 m north of orig. trench are a few more shards at the base of the pit. A few stones - we are adding 1 m to the north. Over the stones in 106 Z/3 but an almost complete small pit every open bowl profile.



26 Aug 1982

3:00 PM

106 AA

In the eastern 18 in extension, down to 50 cm BGS  
if orig. SB error. Now young west for 25 cm  
in orig. 15 BGS in N-5 section, in upper soil  
only -- ca. 34 cm BGS (lot is 20-34 cm). No  
traces, no walls, few seeds.

106 BB

Down ca. 5 cm in N extension. Stone trace  
seen very faintly. There is a possible line  
1.4 m south of new N ditch face, then another  
ca. 2.45 m south. The extension is down with the  
clay level, but there are still few seeds.

106 W

Moved in east. Uncovered a few irregular stones  
high in burrows. Now moving an additional 2.44 m  
2.44 - 3.44 m east of orig.

104 Y

lots of stones, but nothing. Will decide what  
to do tomorrow.

PBS 4

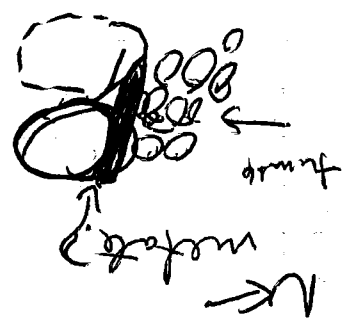
27 Day 1992

106 BB

The men have dug down to 64cm BGS at NW corner. They are below the rocks into the lower soil. There is a possible wall. Tumbled rocks were removed, re-valuing a poor basal level of large stones -- feature is called THALGO. It is in poor condition, much like the basal level at Sp. 1. Tumbled at the base of the wall is a metal fragment. It does not appear to have been part of the wall, just tumbled.

We will next clean back to the second possible feature.

The second feature looks OK -- it is ~~probably~~ <sup>possibly</sup> a wall. Excavating in these will give to cut it. Excavating in to south, remaining earth only.



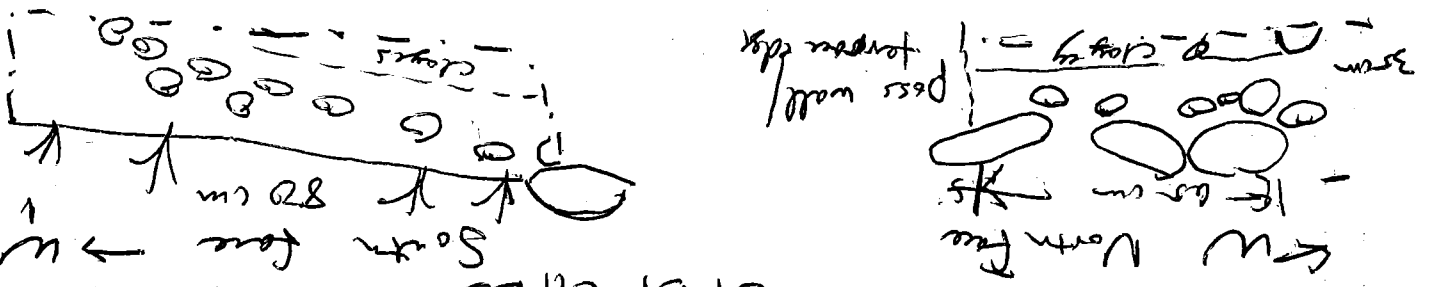
106 AA

Ca. 1.8 m BE is now down into the clay level. Very interesting, lots of Polys. No architecture yet. Going down to soil, change/break rock in east opened more to west!

106 BX

This is not clear. There is some sort of feature in the North trench face. But on the south marks are different.

SKETCHES



They are cutting to the east, leaving the side rocks

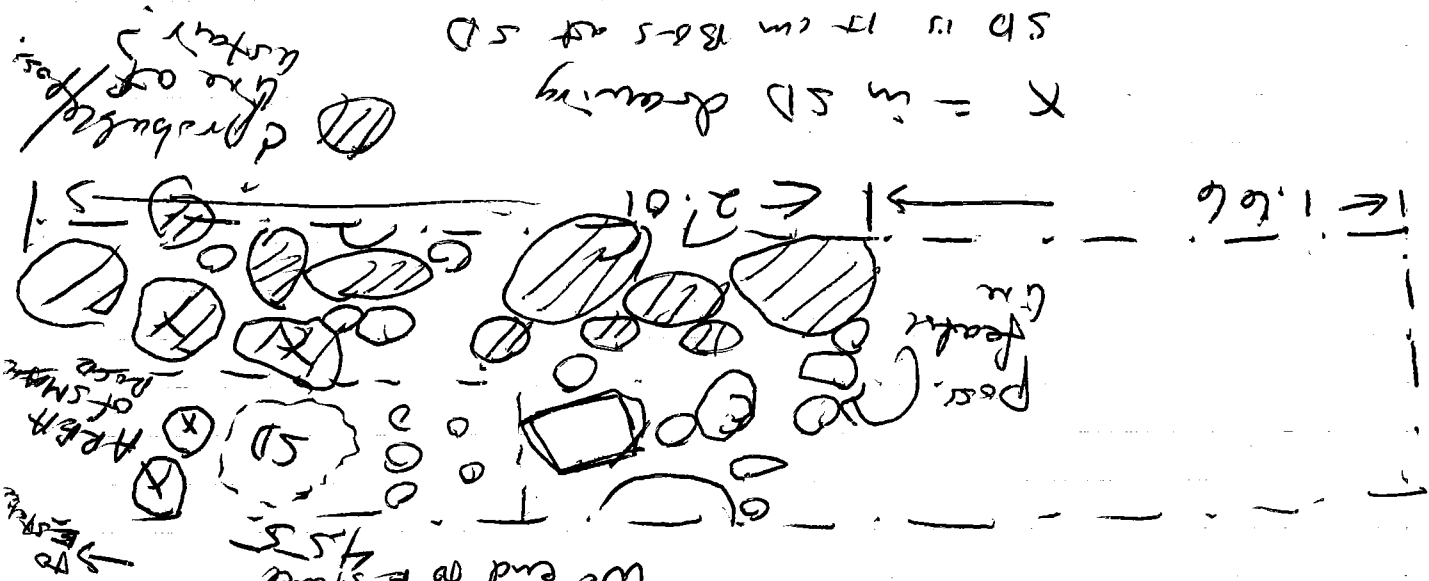
SSH

P865-5

27 July 1982

P86-5-C

~~106 104W~~  
 A special deposit of 3.20 m east of branch west  
 face: ca-9 shards + 1 piece chert(?). It is in the  
 possible terrace area on the north side of the  
 West end to E stake  
 4.55



106 104W  
 Skill no architecture, though lots of shards.

106 RB  
 4-5 m south -- seems to be top a small terrace.

106 W  
 In the west cleared in, on the North face, there is a  
 segment of possible terrace constructed by setting the stones  
 on end

106 W  
 The rocks on end (No branch face) are 83 cm E-W  
 1.37 m high/least is a good clear line (large rock  
 on south side remains different. The south face looks  
 comes ca. 20 cm further east. Between the 2 axes  
 of rocks is an area of dirt. The man or remains  
 At the west face of the putative wall, they are  
 going 1/8 cm B&S to 38 cm B&S.

28 May 1982

Removal out - worked in lab

P82-5-7

29 May  
I'll probably have lab, but might not now it's D.C. out  
at the site. All 3 of us feel ill & shivering out today.  
I have diarrhoea (sp?) & stomach pains. I think Gillian  
is having the same problem.

1063

A possible one, but was poor. I'm leaving from  
clear the dirt back to a clearer line on the  
surface. The line is ~~marked~~ marked. The hard part. The  
1067 X  
Am having the guys strip the earth from over  
the top of the 2 str's. Looking at the two <sup>1069, 1070</sup>  
the surface <sup>1071</sup> to the summit top, but it's difficult. 1070  
1068 The top is lower but no clear limit for either - 1 more  
north

1064

In the upper section on nothing more is apparent  
and the possible addition to its west - BLUE BERRY  
In the area between the definite wall - SPARE BERRY -  
1064

106A

Finally a definite wall - G R A P B P R U T. We are  
having them go down ca. 5 cm to make sure we  
have the base. This str. will be citrus fruits.

106B

The summit shaft is poorly preserved. West going to clear  
up over, between 9 to 10 m. It looks like they will clear  
a summit rock condensation, from some down into a lower room.

29 May 1982

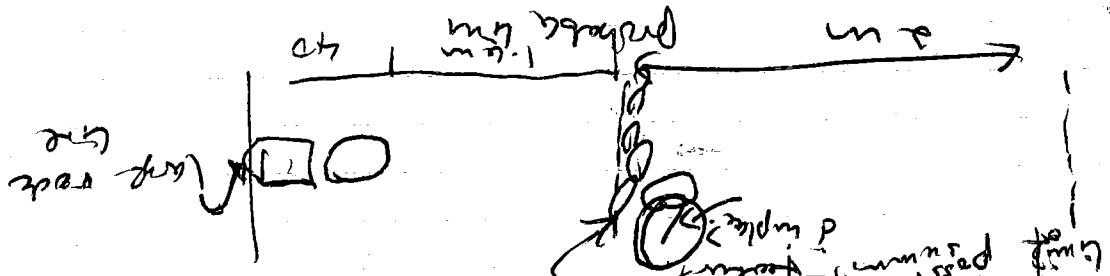
PRG-5-5

100A# stepping was been uncovered 40 cm west of CRAPPE-  
FRUIT! it is called CRAPPE. Right now it  
is only one stone (ca. 10 cm) high. More cleared ca.  
1.5 m to the west of CRAPPE. Lots of small stones,  
mostly 8-12 cm, no lines, with a slope upward

100A#

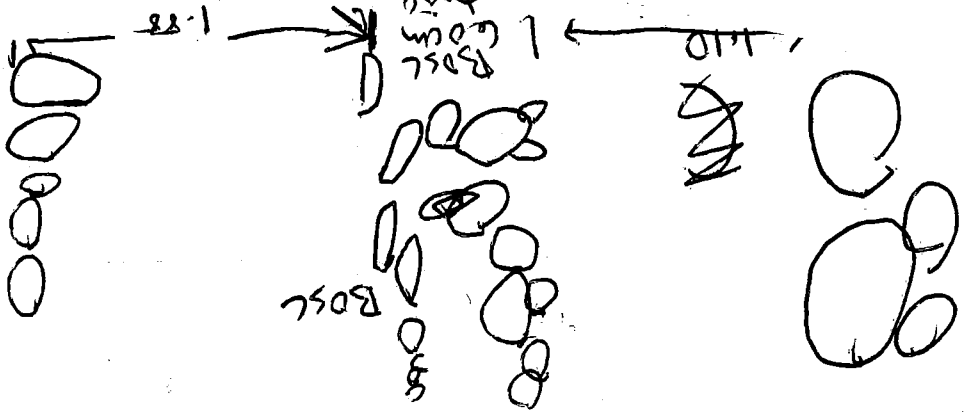
100B#

Presumptive is 80% clear now. The central area is not  
clear (energy track) at all. The track stone area  
extends about 2 m N-S. After that is a dip  
on the south of ca. 15-20 cm. On the surface  
was a clear line, but it looks like nothing  
after excavation. Present conditions  
limit preservation of features



100W

A secondary burial was encountered just east of BLUE-  
BERRY (the on-end feature) and near the south branch  
wall. Bones between 34-41 cm BG-5 of south end  
BLUE BERRY. The bones are in poor condition. Lots  
of shards are around & over the burial. Drawn by Lillem



100Z

17

P5-9

100 BR from North end through morning South, all named + possible features:

TAVCO front 1.10 back 1.40  
 PAPPYH front 2.10 back ?  
 PIVH front 3.83  
 next elev. change 5.56  
 next elev. change 6.75  
 summit level out 8.19  
 summit drops 9.95  
 CILU EL-0 north side (BU line) ca-11.40  
 south side ca-11.25

WAUCE (N-S rock line) N end 11.40  
 south end (50 ft) 13.34

The extending further south in 13.30-14.30

106.7  
 Basal northern wall: CORTLAND 28 cm  
 from front of CORTLAND is the front  
 of MACINTOSH

from south to north:

1st pass. basal wall line GRAVESTEIN 3.2-  
 next stepup PIPER 4.34 10 or < high  
 next pass. stepup GRANVY SMITH 4.80 18 high  
 next pass. stepup PLATYBANK 5.85 10 high  
 small depression 7.50-8.20  
 WILFESSA N side 10-10.10 m  
 THE INTOSH N side 10.50  
 CORTLAND 11.25  
 ca-20 cm  
 ca-15 high  
 ca-20 cm

30 May 1982

P82-5-10

Today is harvest day, Yuck. I slept better last night, but the cumulative tiredness gets worse each day - I may not come out tomorrow.

Point 106 Z

Point 106 Y

33	GRAVEL STBU east
32	PIPEW east
31	PIPEW west
30	GRAVELY SMITH west
29	<del>GRAVELY SMITH east</del>
28	FLAT BEAN east
27	FLAT BEAN west
26	depression SW
25	depression SW SE
24	depression NW NE
23	depression NW NW
22	WILLESAP west
21	WILLESAP east
20	TRACIUTCH east
19	TRACIUTCH west
18	CORTLAND west
17	CORTLAND east
16	Pit NE corner
15	Pit NW corner
14	Pit NE corner
13	Pit NW corner
12	SCKBL north side west
11	SCKBL north side east
10	SCKBL south side east
9	SCKBL south side west
8	BOSC north side west
7	BOSC north side east
6	BOSC south side east
5	BOSC south side west
4	BARTLETT west
3	BARTLETT east
2	SE corner
1	SW corner

1	172.26'	172° 26'	2426
2	171° 00'	171° 00'	2448
3	170° 06'	170° 06'	2424
4	171° 21'	171° 21'	2399
5	170° 55'	170° 55'	2166
6	169° 40'	169° 40'	2194
7	169° 35'	169° 35'	2132
8	170° 47'	170° 47'	2104
9	170° 28'	170° 28'	2002
10	169° 08'	169° 08'	1982
11	168° 57'	168° 57'	2011
12	170° 15'	170° 15'	2001
13	169° 54'	169° 54'	1981
14	168° 03'	168° 03'	1984
15	185° 58'	185° 58'	2180
16	184° 12'	184° 12'	2119
17	183° 36'	183° 36'	2189
18	185° 00'	185° 00'	1950
19	183° 15'	183° 15'	2020
20	182° 43'	182° 43'	1814
21	184° 14'	184° 14'	1875
22	183° 14'	183° 14'	1841
23	181° 53'	181° 53'	1782
24	181° 22'	181° 22'	1768
25	182° 44'	182° 44'	1817
26	182° 12'	182° 12'	1899
27	186° 28'	186° 28'	1865
28	180° 15'	180° 15'	1991
29	181° 35'	181° 35'	2082
30	181° 23'	181° 23'	2188
31	180° 10'	180° 10'	2174
32	180° 00'	180° 00'	2316

1	44.41
2	44.55
3	39.62
4	39.42
5	37.95
6	38.02
7	37.37
8	37.20
9	35.84
10	36.13
11	35.46
12	35.34
13	33.26
14	33.38
15	31.09
16	30.74
17	31.67
18	32.05
19	32.59
20	32.50
21	33.14
22	33.53
23	35.08
24	34.62
25	35.35
26	35.84
27	37.11
28	36.74
29	37.65
30	37.94
31	38.42
32	38.14
33	38.71

P86-5-11

Middle Dist (m)

38.97  
42.67  
42.28  
27.29  
28.25  
28.17  
27.28  
27.14  
25.13  
40.85  
41.02  
49.70  
49.60  
47.88  
47.46  
49.03  
49.55  
26.70  
26.64  
27.13  
28.12  
27.47  
27.46  
27.31  
28.33  
27.74  
27.84  
28.23  
28.88  
29.11  
30.00

2318  
2458  
2436  
2234  
2248  
2425  
2379  
2141  
2131  
2401  
2350  
2509  
2501  
2489  
2483  
2532  
2511  
2131  
2401  
2350  
2509  
2501  
2489  
2483  
2532  
2511  
2131  
2401  
1871

81.05' west  
91.79' SW  
101.78' SE  
111.97' pit NW corner  
121.94' pit SW corner  
131.92' RILINDO south end + middle  
141.93' RILINDO north end + middle  
151.94' BANANA/NECTRINE  
161.94' BANANA/NECTRINE  
171.94' pit corner  
181.94' NE  
191.94' NW  
201.93' SE  
211.93' SW  
221.92' NE  
231.92' NW  
241.92' SW  
251.92' SE  
261.92' SW  
271.92' NW  
281.92' SW  
291.92' SE  
301.92' SW  
311.92' NW  
321.92' SW  
331.92' SE  
341.92' SW  
351.92' NW  
361.92' SW  
371.92' NW  
381.92' SW  
391.92' NW  
401.92' SW  
411.92' NW  
421.92' SW  
431.92' NW  
441.92' SW  
451.92' NW  
461.92' SW  
471.92' NW  
481.92' SW  
491.92' NW  
501.92' SW  
511.92' NW  
521.92' SW  
531.92' NW  
541.92' SW  
551.92' NW  
561.92' SW  
571.92' NW  
581.92' SW  
591.92' NW  
601.92' SW  
611.92' NW  
621.92' SW  
631.92' NW  
641.92' SW  
651.92' NW  
661.92' SW  
671.92' NW  
681.92' SW  
691.92' NW  
701.92' SW  
711.92' NW  
721.92' SW  
731.92' NW  
741.92' SW  
751.92' NW  
761.92' SW  
771.92' NW  
781.92' SW  
791.92' NW  
801.92' SW  
811.92' NW  
821.92' SW  
831.92' NW  
841.92' SW  
851.92' NW  
861.92' SW  
871.92' NW  
881.92' SW  
891.92' NW  
901.92' SW  
911.92' NW  
921.92' SW  
931.92' NW  
941.92' SW  
951.92' NW  
961.92' SW  
971.92' NW  
981.92' SW  
991.92' NW  
1001.92' SW

= Point

34. GRAVENSTEIN west  
35 pit  
36 pit  
37 100 X  
38  
39  
40  
41  
42  
43  
44

Point

50  
49  
48  
47  
46  
45  
44  
43  
42  
41  
40  
39  
38  
37  
36  
35  
34  
33  
32  
31  
30  
29  
28  
27  
26  
25  
24  
23  
22  
21  
20  
19  
18  
17  
16  
15  
14  
13  
12  
11  
10  
9  
8  
7  
6  
5  
4  
3  
2  
1



IH = 1.46m

Dist(m)	Middle	Top	Notes
34.42	1588	151°40'	Wide S in trench
33.55	1522	151°10'	Wide N in trench
33.69	1420	3 151°00'	W end
34.01	1412	4 149°47'	E end
34.13	1512	5 150°12'	W end
34.66	1538	6 150°40'	SE in trench
37.05	2333	7 144°10'	S side in trench
36.09	2139	8 143°35'	N side in trench
36.74	2027	9 144°50'	S in trench
35.76	2012	10 144°10'	N in trench
38.38	2445	11 138°55'	pt corner
38.94	2474	12 139°55'	pt corner
4.95	2432	13 356°10'	Wide small tree
3.56	2065	14 22°07'	Coast of large tree
18.42	2627	15 141°45'	Wide of other <del>large</del> tree

P86-5-12

23.44	3052	1 44°56'	NE pt corner
22.55	—	2 93°57'	NW pt corner
22.05	3438	3 97°27'	W end of Margo, trench
22.76	3376	4 98°12'	W end of Margo, trench
22.27	3161	5 80°15'	W end of Papaya, trench
21.65	3078	6 99°30'	W end of Papaya, trench
20.92	2280	7 83°50'	W end of Pua, trench
21.74	2801	8 84°12'	E end of Pua, trench
21.32	2467	9 87°20'	E end of possible stepup 1, trench
20.47	2432	10 87°45'	W end of post stepup 1, trench
20.09	2036	11 91°06'	W end of post stepup 2, trench
21.05	2159	12 91°49'	E end of post stepup 2, trench
20.92	1836	13 95°38'	E end summit level
19.80	1851	14 95°10'	W end summit level
19.79	1855	15 96°27'	W end summit drops
20.70	1759	16 100°20'	E end summit drops
20.65	1892	17 101°52'	E end Ciriolo, trench
97	1768	18 104°43'	Ciriolo and Nance waterfall
98	1937	19 104°55'	W end Ciriolo, trench
99	2199	20 113°46'	S end Nance
100	2312	21 118°00'	SE corner trench
20.92	2340	22 118°50'	SW corner trench

This pit is probably the least accurate due to strong winds.

186-5-13

Middle

Dist(m)	21.27	20.35	16.48	17.22	13.62	12.80	12.26	13.12	14.24	13.63	16.03	17.28	17.47	17.28	2538	2603	2637	2842	2942	2894	2960	2972	2967	2509
---------	-------	-------	-------	-------	-------	-------	-------	-------	-------	-------	-------	-------	-------	-------	------	------	------	------	------	------	------	------	------	------

23	114°30'	23	114°30'	24	115°05'	25	116°10'	26	119°53'	27	115°17'	28	166°00'	29	224°35'	30	222°30'	31	229°28'	32	232°27'	33	240°46'	34	240°52'	35	242°45'	36	244°00'	37	245°13'	38	243°50'	39	246°04'	40	248°45'	41	246°50'	42	249°18'	43	249°02'	44	251°14'	45	239°04'
----	---------	----	---------	----	---------	----	---------	----	---------	----	---------	----	---------	----	---------	----	---------	----	---------	----	---------	----	---------	----	---------	----	---------	----	---------	----	---------	----	---------	----	---------	----	---------	----	---------	----	---------	----	---------	----	---------	----	---------

E in trench  
 MARATION  
 NW corner Str 13 pit  
 SW corner Str 13 pit  
 SE corner Str 13 pit  
 NE corner Str 13 pit  
 W: \* NE corner  
 SE corner  
 Carberry S  
 Carberry N  
 Strubbery N  
 SD106/11 corner  
~~SD106/11~~ Blueberry Esde, Spt. 35  
 Blueberry Esde, Npt. 36  
 Wide Npt Blueberry  
 Blueberry, Blueberry  
 Blueberry, Blueberry  
 SD106/10: Strubbery  
 Blueberry N in trench  
 Blueberry N in trench  
 Blueberry & Carberry  
 Blueberry S in trench  
 SW corner  
 NW corner  
 NW corner  
 Strubbery S, not there

102	103	104	105	106	107	108	109	110	111	112	113	114	115	116	117	118	119	120	121	122	123	124
-----	-----	-----	-----	-----	-----	-----	-----	-----	-----	-----	-----	-----	-----	-----	-----	-----	-----	-----	-----	-----	-----	-----

3 JUNE

adrian I took no notes -- just did 2 sections drawings today is a transit day.

14 = 1455

POINT

1 106 z SECTEL N side, west pt

SECTEL S side west pt 2

Bose N side, west pt 3

ROYAL E side, 5 pt

ROYAL W side, 5 pt

~~FRANCH CORNER~~

NUTRANCH CORNER

ROYAL / D'ANDSON extension

D'ANDSON turns N, corner

D'ANDSON east of corner

D'ANDSON prob. turns W

West "D'ANDSON" + TRANCH

West "D'ANDSON" + TRANCH, N side

Large rock west

Large rock east

tranch corner

DATE N pt. + tranch

DATE / RAISEN corner

~~RAISEN~~ west + tranch

corner orig. tranch + extension

tranch SW extension, SE corner

east of tension NE corner

east ext. SE corner

PHSA + tranch east

PHSA / NECTARINE corner

NECTARINE / BRANNA corner

PLATANO S pt

PLATANO N + tranch

GUINEO N + tranch

GUINEO S pt

CORTLAND west

CORTLAND east

Feature N south pt

- 31
- 30
- 29 106 Y
- 28
- 27
- 26
- 25
- 24
- 23
- 22
- 21
- 20 west pt
- 19
- 18
- 17
- 16 east side
- 15 106 X
- 14
- 13
- 12
- 11
- 10
- 9
- 8
- 7
- 6
- 5
- 4
- 3
- 2
- 18
- 1A
- 1 106 z

14	1700 57'	1700 57'
13	1720 02'	1720 02'
12	1710 58'	1710 58'
11	1730 08'	1730 08'
10	1730 35'	1730 35'
9	1750 05'	1750 05'
8	1730 35'	1730 35'
7	1690 45'	1690 45'
6	1690 12'	1690 12'
5	1690 13'	1690 13'
4	1700 -	1700 -
3	1680 50'	1680 50'
2	1690 30'	1690 30'
1	1670 30'	1670 30'
14	1690 32'	1690 32'
13	1680 16'	1680 16'
12	1680 16'	1680 16'
11	1670 30'	1670 30'
10	1680 17'	1680 17'
9	1720 11'	1720 11'
8	1720 11'	1720 11'
7	1720 11'	1720 11'
6	1720 11'	1720 11'
5	1720 11'	1720 11'
4	1720 11'	1720 11'
3	1720 11'	1720 11'
2	1720 11'	1720 11'
1	1720 11'	1720 11'
14	1740 45'	1740 45'
13	1700 53'	1700 53'
12	1700 53'	1700 53'
11	1700 53'	1700 53'
10	1700 53'	1700 53'
9	1700 53'	1700 53'
8	1700 53'	1700 53'
7	1700 53'	1700 53'
6	1700 53'	1700 53'
5	1700 53'	1700 53'
4	1700 53'	1700 53'
3	1700 53'	1700 53'
2	1700 53'	1700 53'
1	1700 53'	1700 53'
14	1740 45'	1740 45'
13	1700 53'	1700 53'
12	1700 53'	1700 53'
11	1700 53'	1700 53'
10	1700 53'	1700 53'
9	1700 53'	1700 53'
8	1700 53'	1700 53'
7	1700 53'	1700 53'
6	1700 53'	1700 53'
5	1700 53'	1700 53'
4	1700 53'	1700 53'
3	1700 53'	1700 53'
2	1700 53'	1700 53'
1	1700 53'	1700 53'
14	1740 45'	1740 45'
13	1700 53'	1700 53'
12	1700 53'	1700 53'
11	1700 53'	1700 53'
10	1700 53'	1700 53'
9	1700 53'	1700 53'
8	1700 53'	1700 53'
7	1700 53'	1700 53'
6	1700 53'	1700 53'
5	1700 53'	1700 53'
4	1700 53'	1700 53'
3	1700 53'	1700 53'
2	1700 53'	1700 53'
1	1700 53'	1700 53'
14	1740 45'	1740 45'
13	1700 53'	1700 53'
12	1700 53'	1700 53'
11	1700 53'	1700 53'
10	1700 53'	1700 53'
9	1700 53'	1700 53'
8	1700 53'	1700 53'
7	1700 53'	1700 53'
6	1700 53'	1700 53'
5	1700 53'	1700 53'
4	1700 53'	1700 53'
3	1700 53'	1700 53'
2	1700 53'	1700 53'
1	1700 53'	1700 53'

MONITE

P86-5-14

3 June 1986  
PT  
DOVE  
106 Y extension

32  
33  
34  
35  
36  
37  
38  
39  
40  
41  
42  
43  
44  
45  
46  
47  
48  
49  
50  
51  
52  
53  
54  
55A  
55B  
56  
57  
58  
59  
60  
61  
62  
63  
64  
65  
66  
67  
68  
69  
70  
71  
72  
73  
74  
75  
76  
77  
78  
79  
80  
81  
82  
83  
84  
85  
86  
87  
88  
89  
90  
91  
92  
93  
94  
95  
96  
97  
98  
99  
100  
101  
102  
103  
104  
105  
106  
107  
108  
109  
110  
111  
112  
113  
114  
115  
116  
117  
118  
119  
120  
121  
122  
123  
124  
125  
126  
127  
128  
129  
130  
131  
132  
133  
134  
135  
136  
137  
138  
139  
140  
141  
142  
143  
144  
145  
146  
147  
148  
149  
150  
151  
152  
153  
154  
155  
156  
157  
158  
159  
160  
161  
162  
163  
164  
165  
166  
167  
168  
169  
170  
171  
172  
173  
174  
175  
176  
177  
178  
179  
180  
181  
182  
183  
184  
185  
186  
187  
188  
189  
190  
191  
192  
193  
194  
195  
196  
197  
198  
199  
200  
201  
202  
203  
204  
205  
206  
207  
208  
209  
210  
211  
212  
213  
214  
215  
216  
217  
218  
219  
220  
221  
222  
223  
224  
225  
226  
227  
228  
229  
230  
231  
232  
233  
234  
235  
236  
237  
238  
239  
240  
241  
242  
243  
244  
245  
246  
247  
248  
249  
250  
251  
252  
253  
254  
255  
256  
257  
258  
259  
260  
261  
262  
263  
264  
265  
266  
267  
268  
269  
270  
271  
272  
273  
274  
275  
276  
277  
278  
279  
280  
281  
282  
283  
284  
285  
286  
287  
288  
289  
290  
291  
292  
293  
294  
295  
296  
297  
298  
299  
300

184°40' NW worm extension  
182°05' TRACIKTOSH west trench  
179°45' TRACIKTOSH east, poss. worm  
179°13' MAGNTOSH poss. S pt  
177°21' MAGNTOSH poss. E pt  
182°15' WILKESAP W trench  
180°12' WILKESAP east  
176°05' Trench NE corner  
176°00' ? feature E trench  
177°50' ? feature corner  
176°45' ? feature intersect pass Bulwark  
176°15' EW line trench, east  
178°12' Bulwark W corner / US line  
178°15' NS line, N trench  
178°04' BOYDEN BERRY  
248°53' BOYDEN BERRY  
240°45' STRAW BERRY  
239°11' STRAW BERRY  
229°56' GRABERRY W, S trench  
232°37' GRABERRY W, N trench  
227°50' GRABERRY E, S trench  
229°40' GRABERRY E, N trench  
216°47' GOOSE BERRY N trench  
214°37' GOOSE BERRY S + trench  
205°55' RASPBERRY S trench  
206°54' RASPBERRY N trench  
201°30' trench NE corner  
200°40' trench SE corner  
156°57' TRAPALON SW corner  
114°11' TRAPALON north  
109°34' trench NW corner Nest  
119°42' trench SW corner  
117°14' trench SE corner  
115°30' trench NE corner SW corner  
116°37' trench S trench  
118°05' TRAPALON N + TRAPALON SW

←  
↑  
2012

184°40' 2012  
182°05' 1992  
179°45' 1998  
179°13' 1992  
177°21' 2090  
182°15' 1767  
180°12' 1765  
176°05' 1749  
176°00' 1952  
177°50' 2067  
176°45' 1902  
176°15' 1881  
178°12' 1980  
178°15' 1895  
248°53' 2859  
240°45' 2322  
239°11' 2471  
229°56' 1749  
232°37' 1843  
227°50' 1759  
229°40' 1801  
216°47' 1917  
214°37' 1899  
205°55' 2341  
206°54' 2281  
201°30' 2055  
200°40' 2245  
156°57' 2205  
114°11' 2203  
109°34' 2041  
119°42' 2185  
117°14' 2247  
115°30' 2179  
116°37' 2453  
118°05' 2300

Dist  
P88-5-6

3 June 1982

PRS-5-10

Point	Distance	Bearing	Notes
85	23.87m	112°30'	MARATHON cleared east +
86	24.76m	112°0'	MARATHON east
87	25.24m	110°22'	pit corner NE
88	25.39m	113°14'	pit corner NW
89	24.77m	113°30'	MARATHON east side south end
90	24.53m	112°30'	MARATHON east + MARATHON
91	24.30m	112°53'	MARATHON west + MARATHON
92	24.24m	114°08'	MARATHON west, south pt
93	35.30m	144°06'	ORANGE south pt
94	34.89m	143°25'	ORANGE north pt
95	35.18m	143°10'	GRAPEFRUIT south pt
96	34.83m	142°14'	GRAPEFRUIT north pt
97	35.84m	142°19'	LINE south
98	35.12m	141°36'	LINE North
99	33.51m	142°22'	NW pit
80	34.76m	139°30'	NE pit
81	36.50m	141°30'	SE pit
82	35.63m	143°48'	SW pit
83	12.77m	221°0'	LOW MULBERRY south
84	12.16m	222°55'	HULBERRY north

11004E



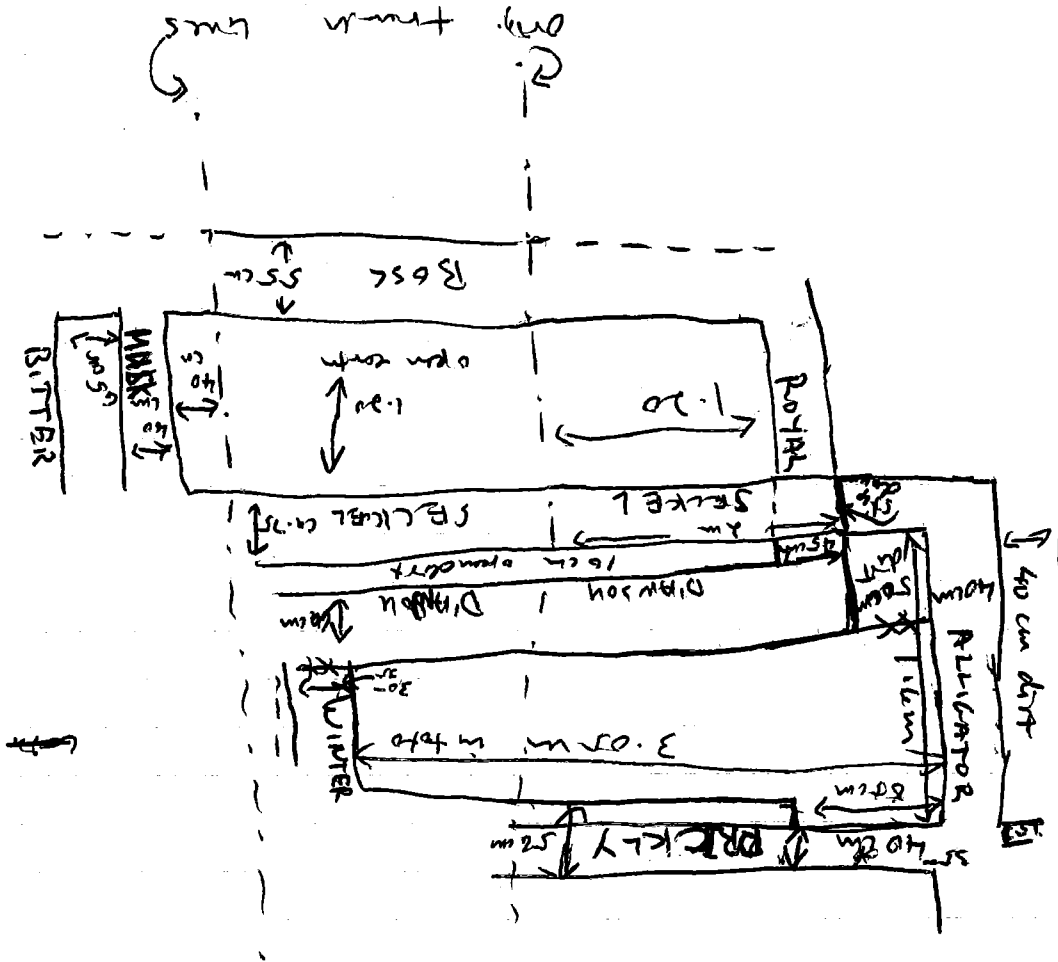
4 June 1983

P86-5-16 B

Yest day I took plan pts. all day. Between that & the other days of drawing, etc. I am severely lacking on water. So today I will decide to not talking and sketching. It rained heavily again last night & the pits are deeper in that <sup>past day</sup> than very messy. I'll go to some sketch below

We continue to clear str. B & C. There are tons of lines defining, we think, a number of small rooms (see below). It's like a warm of rooms. B & C no longer look particularly independent. We are concentrating on Z / that right now, & will return to Y / Sh. B later

at str. B  
to 2 rows  
of B's  
to east, a third  
5 units  
could



1086-5-17

45m

1003 (cont.)

Bosc + cassin with NS, composed of irregular lens of rock, usually about 3-4', the south line is set on end, unlike most construction here; stones are fairly small.

NS	17	19	5	10	14	5
	16	15	8	9	13	4
	9	14	1	8	12	5
	13	10	5	17	10	
	17	8		9	11	
	10	5		7	16	

central trench

EW track	12	17	1	14	4	4
	13	16	1	18	7	4
	10	15	1	10	4	4
	12	14	1	9	3	4
	13	17	1	18	7	4
	10	15	1	10	4	4
	12	14	1	9	3	4

on end

NS	12	12	3	14	5	4
	13	13	3	18	8	4
	10	12	4	14	9	4
	12	13	5	18	4	4
	7	7	3	12	4	4
	10	5	5	25	4	4

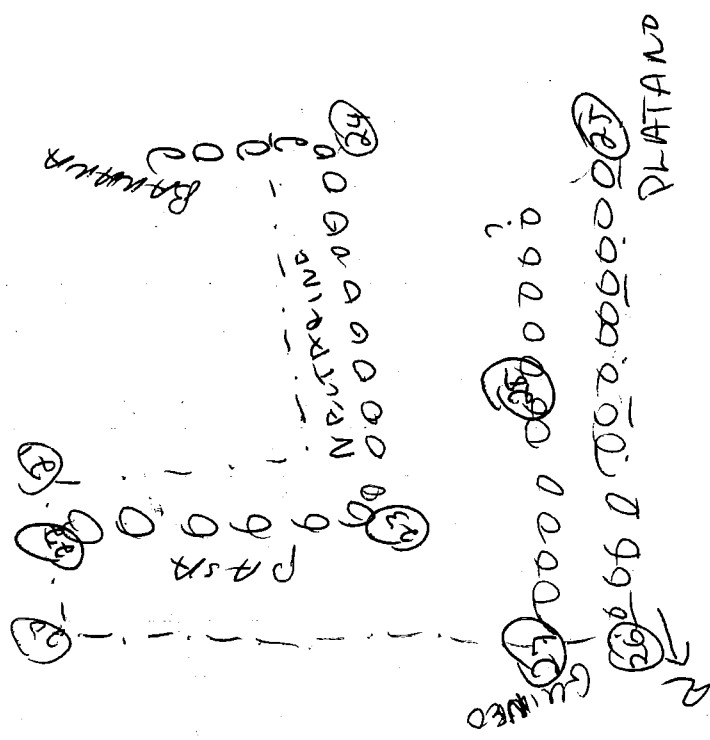
upper line on east

Track: between Bosc + SECKEL runs No-5, better preserved on East than west; a stone lines 5 down, of various sizes (see above) we have cut 5-6 cm below the level shown in the section between the orig. trench line + track. It is all dirt, except a large stone is coming out on the south, by Bosc. Bosc at this section is 25-30 cm high. East side track is 30 cm high - we may be near the battery or it seems to rest on dirt on the north exposed and

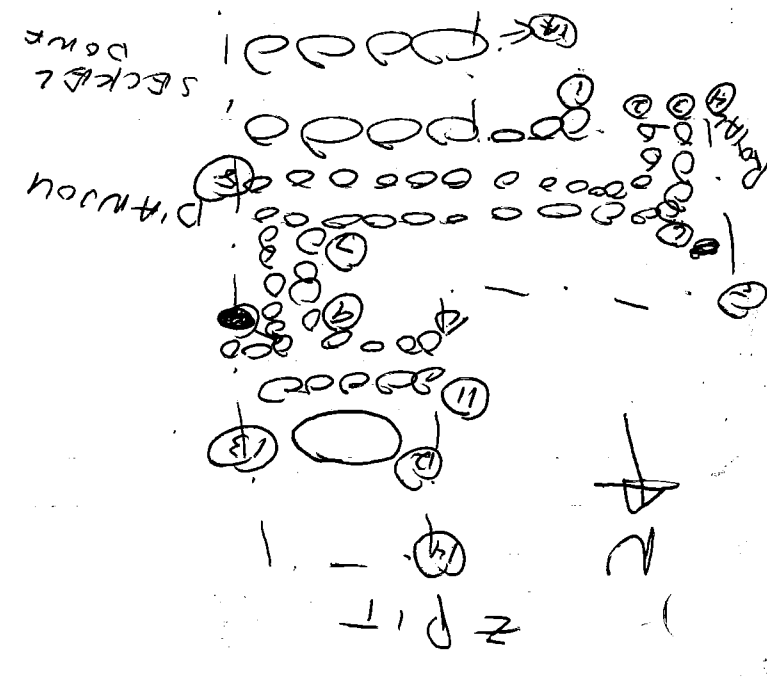
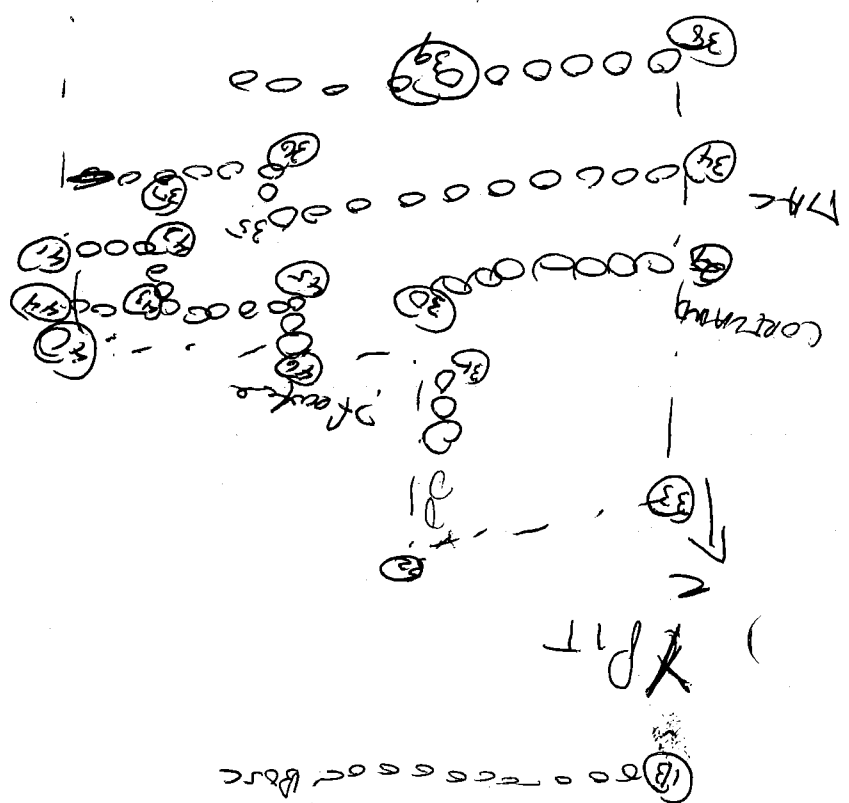
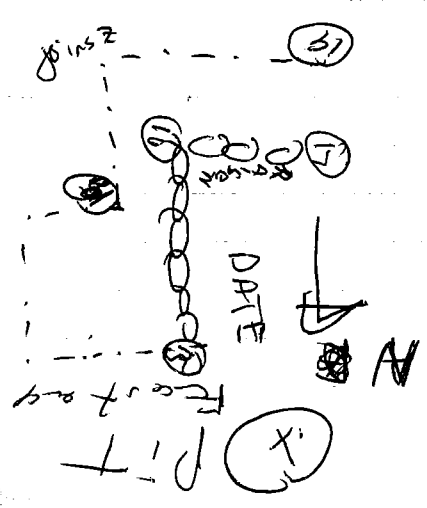
SBCE: This appears to be set on dirt in the central trench and what it is exposed B + W (see section). Shows in the central pit are large - only a across the in trench

arrangement - stone foundations for adobe

30m



X PIT West







Edwards 1982

106 Z (cont.)

SECKER west of RAYNE seems higher than ALLIGATOR at its intersection, it seems to run over ALLIGATOR

ALLIGATOR will be described after more diggings.

D'ALOU: runs parallel to SECKER, below it (when SECKER is basal strata) and begins ca. 10 cm to the north of SECKER. D'ALOU seems to begin ca. 20 cm west of the grid. Trench east face. This must be checked if more diggings.

D'ALOU has 3 grades of stones running E-W for 1.7 m. The southern one is a few cm. higher than the other 2. (ca. 5-8 cm). Some places the cut is 2-4 m wide rocky, eg. pt. of contact from line of rocky

The North side of D'ALOU is expected for ca. 2-7 m. The south side for 2-3 m. NORTH SIDE

The North side of D'ALOU is expected for ca. 2-7 m. The south side for 2-3 m. NORTH SIDE

Division	NS	EW	NS	EW	NS	EW	NS	EW
Division	17	17	17	17	17	17	17	17
West of	8	4	15	4	15	4	15	4
North	13	3	5	3	5	3	5	3
Central	25	4	11	4	11	4	11	4
South	15	7	7	7	7	7	7	7
	15	5	5	5	5	5	5	5
	17	9	9	9	9	9	9	9
	13	4	4	4	4	4	4	4
	11	7	7	7	7	7	7	7
	16	7	7	7	7	7	7	7
	17	16	16	16	16	16	16	16

Division	NS	EW	NS	EW	NS	EW	NS	EW
Division	18	17	17	17	17	17	17	17
West of	17	4	15	4	15	4	15	4
North	8	4	13	4	13	4	13	4
Central	25	4	11	4	11	4	11	4
South	15	7	7	7	7	7	7	7
	15	5	5	5	5	5	5	5
	17	9	9	9	9	9	9	9
	13	4	4	4	4	4	4	4
	11	7	7	7	7	7	7	7
	16	7	7	7	7	7	7	7
	17	16	16	16	16	16	16	16

loc 2 (cont.)

SECTBL is higher at the POYAL/SECTBL area  
 POYAL will be described later -- it is still  
 covered in earth.

loc X

The south wall of SR8 is RAISEN. It  
 is preserved 30 cm high on the west, but is low  
 at the SW corner. It is made of large  
 regular courses of large stones w/ in country  
 less regular lines of smaller stones. Four courses  
 of large stone are preserved

18	8	18	8	18	8	18	8
30	10	30	10	30	10	30	10
23	13	23	13	23	13	23	13
23	10	23	10	23	10	23	10
29	12	29	12	29	12	29	12
25	13	25	13	25	13	25	13
28	8	28	8	28	8	28	8
14	9	14	9	14	9	14	9
15	5	15	5	15	5	15	5
16	6	16	6	16	6	16	6
25	13	25	13	25	13	25	13
40	14	40	14	40	14	40	14
17	11	17	11	17	11	17	11
88	13	88	13	88	13	88	13
10	12	10	12	10	12	10	12
83	15	83	15	83	15	83	15
23	7	23	7	23	7	23	7
22	9	22	9	22	9	22	9
22	11	22	11	22	11	22	11
27	9	27	9	27	9	27	9

Top layer  
 2nd row  
 3rd row  
 large  
 bottom  
 large

1st row  
 small rocks  
 2nd small  
 between of large  
 2nd small  
 3rd small  
 Bottom large  
 27  
 24  
 35  
 13  
 10  
 9  
 4  
 5  
 5  
 6  
 3  
 5  
 5  
 6  
 7  
 9  
 14  
 8  
 3  
 14  
 9  
 9  
 4  
 4  
 4  
 4  
 5

4 line  
 lot X (cont)

Bolon RAISEN are a older features, most in staves  
 makes of 3 dune - These must be identified later

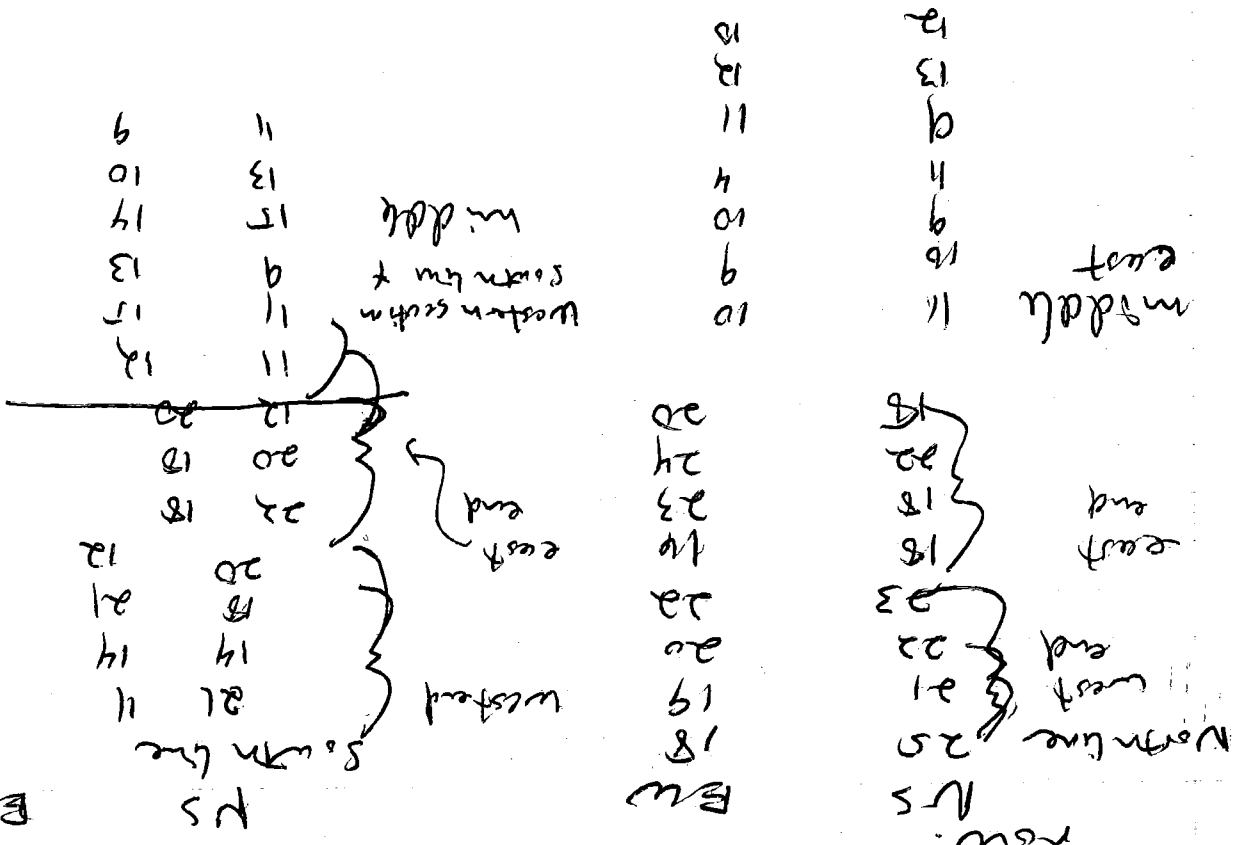
The staves of RAISEN are clearly chosen for their  
 flat sides, even most of the small staves. Some  
 of them even seem to be broken to present a flat side.

100 Z (cont)

PRICELY: runs E-W. NE junction w/ WINTER!

West Junction w/ ALLIATOR.  
 Total length 365 m. The western 85 cm  
 has a northern line of large rocks, & a southern  
 line of smaller rocks. The remainder is 60 cm  
 wide N-S & consists of a North line of  
 largest rocks, a south line of 5' gully  
 smaller stones, and a 4-stones filling in the  
 middle. I do not think that the western  
 85 cm have merely east from south

It is 12 cm  
 40-45 cm  
 wide N-S.



4 June 1986

P86-5-22

100%  
Well line Azimuths

805 2890

SECTOR S 2680

SECTOR N 90/271°

ALLIGATOR 1790/350°

Tusk 357° 30'  
D'Almeida 222°  
PRICKLY 204°  
ROYAL 357°

106 V

RAISEN AZIMUTH = 00.270°

DATE

~~RAISEN~~, the ~~RAISEN~~ N-5 running eastern based wall for  
of OR 8, is exposed from the original track. It will be  
ca. 1.80 m (Pin leaning drinkle measuring because  
the pit bottom is still 6 m deep in H-0 cut  
2:25 PM). Unfortunately, the wall in the central  
drench is partly eaten away (by workmen) and only the  
bottom 2 courses are undamaged at its 3-4 courses.  
The west line of the apparent 2 parallel line and  
then is also prepared in the center. The wall is ca. 50 cm  
high toward the corner. The based stones are very  
large near the corner. The corner is damaged.

DATE  
~~RAISEN~~

NS  
thick

Base of  
course

25 40 14 8

21 13

22 13

25 7

25 5

23 11

25 9

27 7

20 4

10

2nd course up

upstairs

The stones have been  
chosen to have flat  
sides to the east!  
Some seem broken or  
roughly fixed to be  
flat.

The summit portion of  
OR 8 is in even worse  
shape than before the  
rain. I don't know if  
it will do any use but  
or not, although there  
should be terraces below  
the trunk.

Point	Description	Angle	Distance	Year	Dist
37	Murmo Asparagus corner	193° 15'	2087	2012	25.47 m
38	E end Asparagus	192° 55'	2140	1966	25.34
39	E end Artichoke	193° 0'	1966	1977	24.85
40	W end Artichoke	194° 50'	1977	2136	19.58
41	NW pt corner	197° 15'	2136	2198	19.50
42	NE pt corner	194° 45'	2198	1763	22.83
43	Uva Treva Canon 106 RB	108° 05'	1763	1831	22.50
44	Uva Guava Canon	97° 35'	1831	1681	21.34
45	Guava Dura Canon	97° 20'	1681	1959	21.76
46	Dura Dura Canon corner	92° 30'	1959	<del>2012</del>	<del>19.67</del>
47	E end Helocotr S side	97° 08'	2012	1878	19.65
48	W side Helocotr	191° 15'	1878	2001	22.15
49	NW side Helocotr	87° 8'	2001	2221	29.15
50	W end trench	9° 15'	2001	2270	29.73
51	E end trench	182° 10'	2221	1869	29.09
52	N end pruned 106 X	182° 10'	1869	1935	29.03
53	S end pruned	182° 04'	1935	1726	31.01
54	N end current	180° 42'	1726	1880	31.00
55	S end current	179° 45'	1880	2018	31.26
56	N trench corner	180° 0'	2018	1894	31.11
57	S trench corner	179° 30'	1894	1945	31.44
58	N trench step up: trench	178° 23'	1945	1904	31.59
59	S corner of step up	178° 05'	1904	1923	31.73
60	E corner of 2nd step up	176° 45'	1923	1974	31.97
61	S corner of step up	176° 45'	1974	2002	32.50
62	E corner of step up	176° 15'	2002	2057	32.41
63	W end of 3rd river	176° 15'	2057	1821	31.30
64	E end 3rd river	170° 41'	1821	1764	31.02
65	E end 2nd river	171° 0'	1764		
66	W end 2nd river	173° 45'			
67	W end 1st river	172° 57'			
68	E end 1st river	171° 0'			
69	E end 4th river	170° 24'			
70	W end 4th river	174° 15'			

Point

38.00	2198	166°53'	Bosc/BITTER SE corner	7
37.61	2201	173°36'	Bosc/Royal SW NE corner	22
35.82	2035	173°43'	Bosc/Bosc/BITTER west SE corner	33
35.72	2000	174°57'	SE corner/BITTER SW	34
34.85	2022	175°0'	SE corner	35
34.80	2131	174°30'	SE corner	36
34.15	2060	174°22'	NE corner	37
34.11	2011	175°0'	NE corner	38
33.24	1940	174°41'	NE corner	39
33.26	2100	170°05'	NE corner	40
32.66	2238	169°45'	NE corner	41
32.75	2268	168°34'	NE corner	42
33.38	2238	168°17'	NE corner	43
33.76	2102	168°57'	NE corner	44
34.42	2188	168°0'	SE corner	45
34.70	2218	166°48'	SE corner	46
34.16	2226	166°45'	SE corner	47
34.12	1923	169°0'	SE corner	48
34.14	1954	170°10'	SE corner	49
33.71	2057	174°11'	SE corner	50
35.07	2159	174°22'	SE corner	51
35.08	2147	173°45'	SE corner	52
34.53	2064	173°35'	SE corner	53
34.78	2169	167°50'	SE corner	54
35.59	2053	167°50'	SE corner	55
35.74	2053	166°48'	SE corner	56
35.15	2105	166°23'	SE corner	57
35.33	2104	165°40'	SE corner	58
33.82	1984	164°45'	SE corner	59
32.75	1821	164°30'	SE corner	60
37.37	2101	167°15'	SE corner	61
37.31	2164	168°12'	SE corner	62
36.41	2078	168°0'	SE corner	63
36.44	2111	167°22'	SE corner	64
36.30	1997	168°30'	SE corner	65
37.34	2016	169°0'	SE corner	66
37.10	2036	172°32'	SE corner	67

DIST

Point

~~BITTER east / BITTER north side~~

~~SE corner / BITTER~~

~~SE corner / BITTER~~

~~SE corner / BITTER~~

~~SE corner / BITTER~~

~~SE corner / BITTER~~

~~SE corner / BITTER~~

~~SE corner / BITTER~~

~~SE corner / BITTER~~

~~SE corner / BITTER~~

~~SE corner / BITTER~~

~~SE corner / BITTER~~

~~SE corner / BITTER~~

~~SE corner / BITTER~~

~~SE corner / BITTER~~

~~SE corner / BITTER~~

~~SE corner / BITTER~~

~~SE corner / BITTER~~

~~SE corner / BITTER~~

~~SE corner / BITTER~~

~~SE corner / BITTER~~

~~SE corner / BITTER~~

~~SE corner / BITTER~~

~~SE corner / BITTER~~

~~SE corner / BITTER~~

~~SE corner / BITTER~~

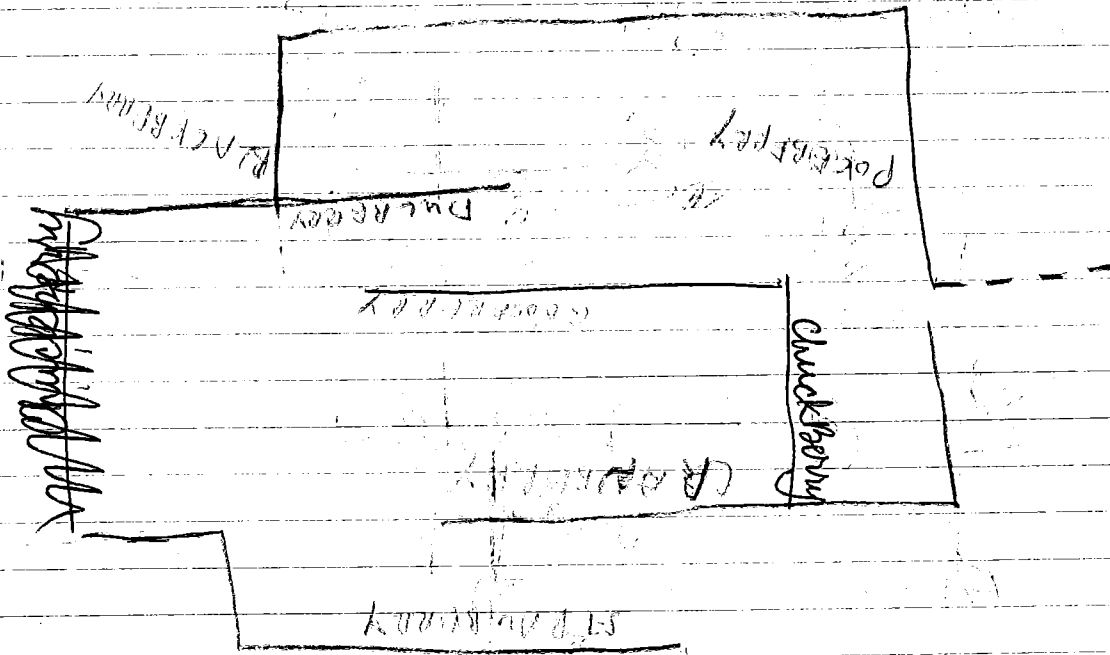
~~SE corner / BITTER~~

~~SE corner / BITTER~~

~~SE corner / BITTER~~

~~SE corner / BITTER~~

~~SE corner / BITTER~~



P17 W



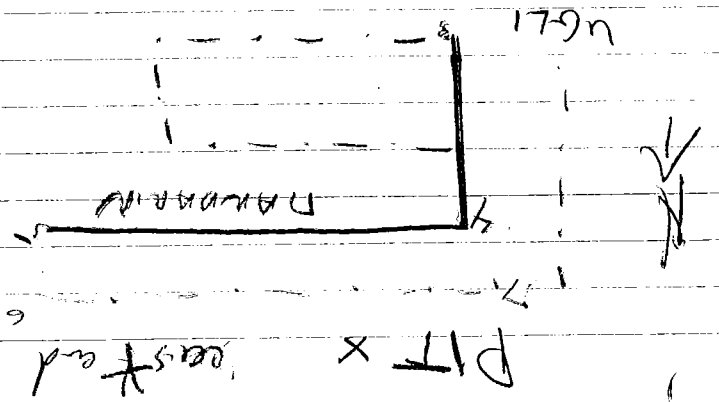
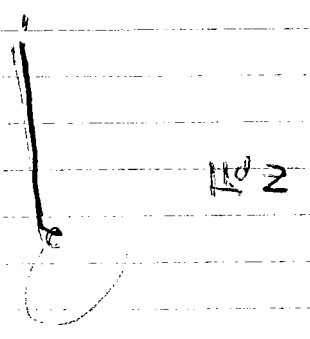
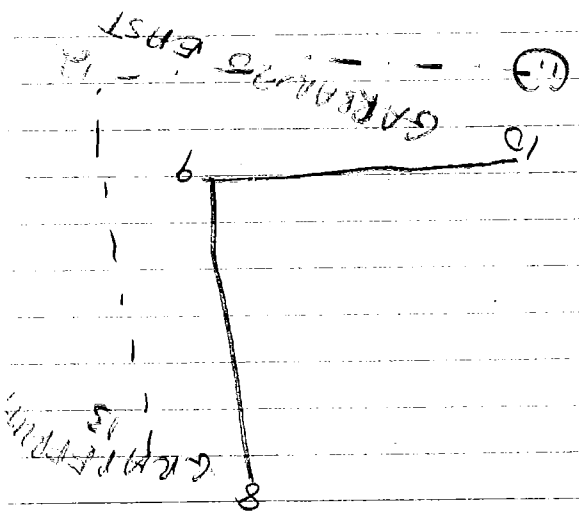
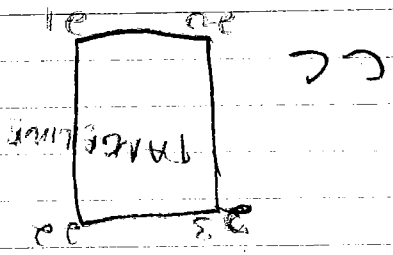
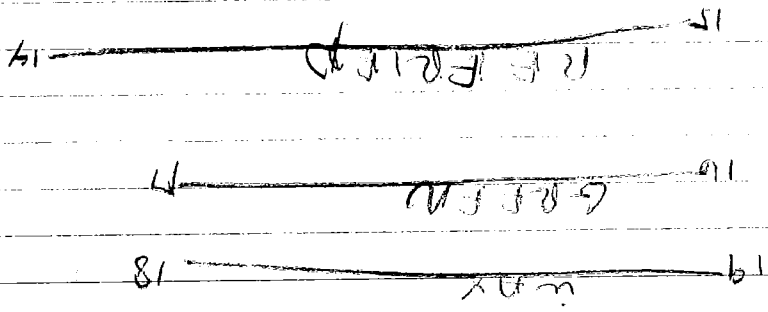
14 = 1375

- 108
- 109
- 110
- 111
- 112
- 113
- 114
- 115
- 116
- 117
- 118
- 119
- 120
- 121
- 122
- 123
- 124
- 125
- 126
- 127
- 128
- 129
- 130
- 131
- 132
- 133
- 134
- 135
- 136
- 137
- 138
- 139
- 140
- 141
- 142
- 143
- 144
- 145
- 146
- 147
- 148
- 149
- 150

18.12	2362	160° 0'
18.98	2364	154° 30'
20.75	2365	156° 20'
20.04	—	161° 37'
38.22	2099	175° 0'
36.67	2098	164° 0'
37.75	2162	164° 30'
37.71	2239	165° 30'
38.52	2131	165° 45'
38.28	2229	166° 20'
34.94	<del>1933</del> 2051	175° 50'
27.80	2051	176° 0'
30.91	2281	169° 37'
32.27	2222	170° 15'
35.51	2268	168° 37'
35.27	2269	168° 35'
34.90	2111	172° 45'
35.18	2005	172° 48'
34.04	1994	172° 30'

corner - NW  
corner - NE  
corner - SE  
corner - SW  
Ditch corner  
french corner  
french corner  
french corner  
Trench corner  
Trench corner  
Trench corner  
LOC 2 BITTER east side, S & branch  
south and  
LOC Y CORNARD  
WATERBLON north and  
WATERBLON south and  
Puck / SECTEL (side) corner  
D. A. JOY / Puck interior corner  
ROYAL / D. A. JOY interior corner  
ROYAL / SECTEL (side) corner  
~~ROYAL / D. A. JOY interior corner~~  
108 106 2 SECTEL / ROYAL cont side  
side  
interior corner





PIT A A