
Four Valleys Archive

Anthropology

2008

EPV Op. 10-16 Lot Forms 2008

Mary Hostenske

Follow this and additional works at: <https://digital.kenyon.edu/honduras>



Part of the Archaeological Anthropology Commons

Recommended Citation

Hostenske, Mary, "EPV Op. 10-16 Lot Forms 2008" (2008). *Four Valleys Archive*. Paper 96713.
<https://digital.kenyon.edu/honduras/96713>

This Lot Card is brought to you for free and open access by the Anthropology at Digital Kenyon: Research, Scholarship, and Creative Exchange. It has been accepted for inclusion in Four Valleys Archive by an authorized administrator of Digital Kenyon: Research, Scholarship, and Creative Exchange. For more information, please contact noltj@kenyon.edu.

PAREP 2008 LOT FORM

Excavator 17

Date 19 June 2008

Op/SubOp/Lot: 10/16/01

Ex. Unit A

Size (NxEx) 1x1

Site: Los Naranjitos (S-007)

Str 7

Initial Lot? yes

Prev. lot -

Next lot 2

BGS: 0-20

Initial elev.: NW 996.70 NE 996.79 SW 996.71 SE 996.82

Final elev.: NW 996.54 NE 996.53 SW 996.52 SE 996.55

Reference corner: SE EU B N 1.28 E -187.87

Deposit / Type overburden / humus & tumble

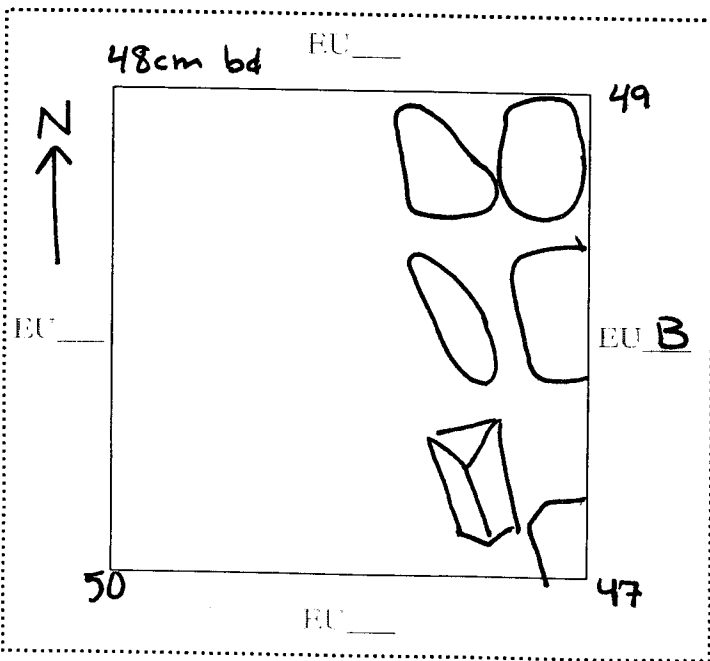
Soil type Silty ~~tan~~ clay Munsell/Color 2.5Y 3/3 Dark Brown

Drawings 2

Contents 3 tiestos

Photo/Digital ✓

Description/Sketch (with measurements):



* Datum is located on the SE corner of EU B.

The purpose of this lot is to expose architecture and uncover trash deposits. Some tumble was uncovered and removed. The tumble that remains may be related to a wall.

Note refs 3, 4

Op/SubOp/Lot: 10/16/02

Ex. Unit A

Size (Nx E) 1x1

Site: Los Naranjitos (S-007)

Str 7

Initial Lot? NO

Prev. lot 1

Next lot 5

BGS: 20-40cm

Initial elev.: NW 996.54 NE 996.53 SW 996.52 SE 996.55

Final elev.: NW 996.38 NE 996.37 SW 996.37 SE 996.39

Reference corner: SE EU B N 1.28 E -187.87

Deposit / Type architectural / wall & tumble

Soil type silty clay

Munsell/Color 2.5 Y 3/3 Dark Brown

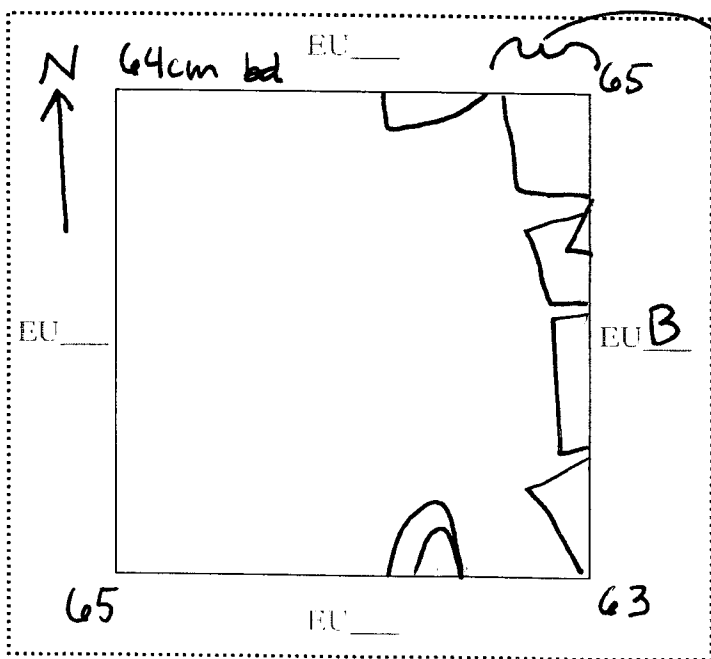
Drawings yes

Contents 48 ceramica

Photo/Digital ✓

4 obsidiana
1 peridermal

Description/Sketch (with measurements):



possible wall
A wall was uncovered in the Eastern side of EU A. It was associated with Yumble.

* Datum is SE corner of EU B.

Note refs 5, 6

Op/SubOp/Lot: 10/16/03

Ex. Unit B

Size (NxEx) 1x1

Site: Los Naranjitos (S-007)

Str 7

Initial Lot? yes

Prev. lot -

Next lot 4

BGS: 0-40cm

Initial elev.: NW 996.79 NE 996.99 SW 996.82 SE 997.02

Final elev.: NW 996.63 NE 996.63 SW 996.59 SE 996.64

Reference corner: SE

N 1.28

E -187.87

Deposit / Type overburden / humus & tumble

Soil type silty clay

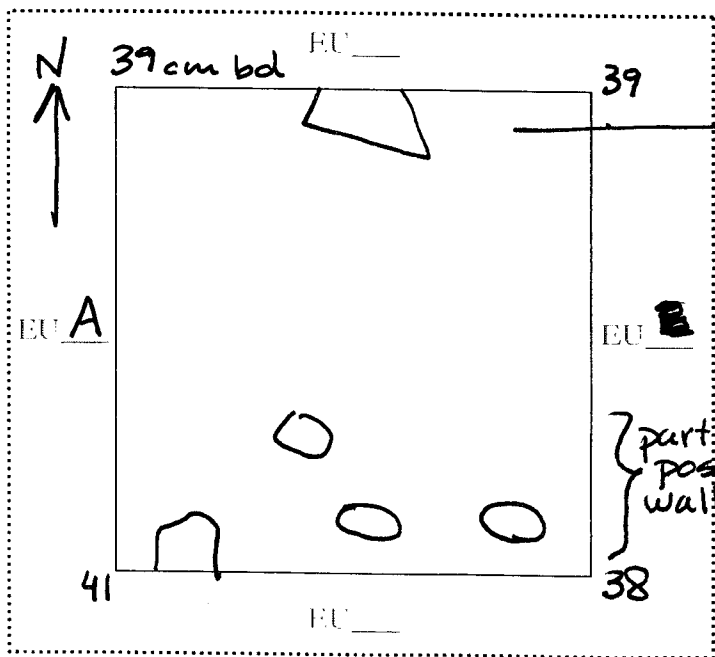
Munsell/Color 2.5Y 3/3 Dark Brown

Drawings yes

Contents 10 ceramica

Photo/Digital ✓

Description/Sketch (with measurements):



tumble

The purpose of this lot was to expose the remainder of the wall and the surface of the structure.

→ Datum @ SE corner.

Note refs 6, 7

Op/SubOp/Lot: 10/16/04

Ex. Unit B

Size (NxEx) 1x1

Site: Los Naranjitos (S-007)

Str 7

Initial Lot? no

Prev. lot 3

Next lot 6

BGS: 40-50cm

Initial elev.: NW 996.63 NE 996.63 SW 996.59 SE 996.64

Final elev.: NW 996.56 NE 996.42 SW 996.47 SE 996.40

Reference corner: SE

N 1.28

E -187.87

Deposit / Type architectural

wall & fill

Soil type silty clay

Munsell/Color 2.5Y 3/3 Dark Brown

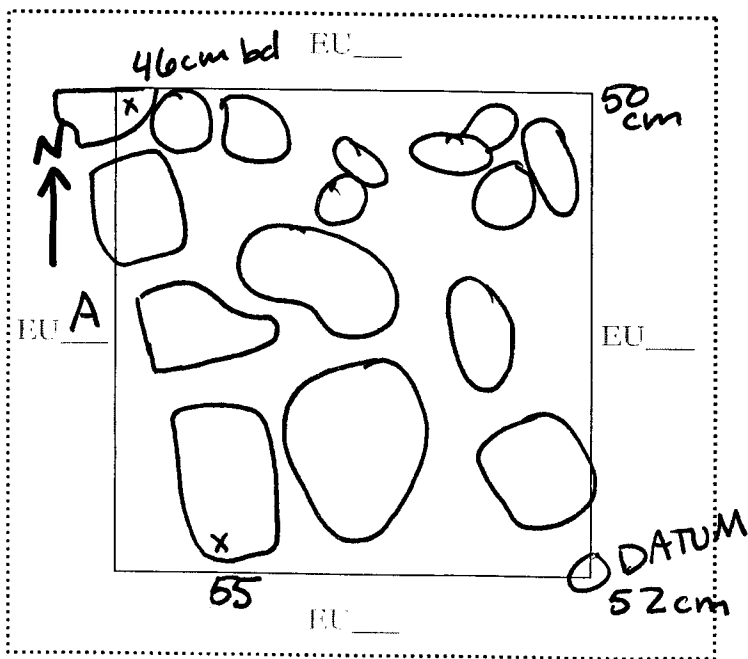
Drawings yes

Contents 58 ceramica

Photo/Digital ✓

1 obsidiana

Description/Sketch (with measurements):



Note refs 7

PAREP 2008 LOT FORM

Excavator 17

Date 23 June 2008

Op/SubOp/Lot: 10/16/05

Ex. Unit A

Size (NxEx) 1x1

Site: Los Naranjitos (S-007)

Str 7

Initial Lot? no Prev. lot 2 Next lot 7 BGS: 60-65

Initial elev.: NW 996.38 NE 996.37 SW 996.37 SE 996.39

Final elev.: NW 996.38 NE 996.36 SW 996.37 SE 996.36

Reference corner: SE EUB N 1.28 E -187.87

Deposit / Type architectural / wall

Soil type silty clay Munsell/Color 2.5Y3/3 Dark Brown

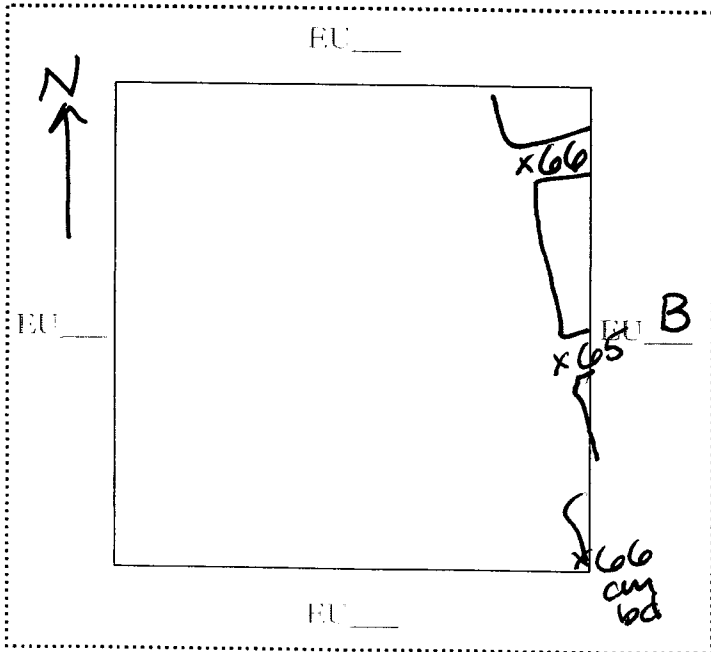
Drawings

Contents 1 obsidiana

Photo/Digital

48 ceramica

Description/Sketch (with measurements):



* Datum

Note refs 10

Op/SubOp/Lot: 10/16/06

Ex. Unit B

Size (NxEx) 1x1

Site: Los Naranjitos (S-007)

Str 7

Initial Lot? NO

Prev. lot 4

Next lot —

BGS: 50-60cm

Initial elev.: NW 996.56 NE 996.42 SW 996.47 SE 996.40

Final elev.: NW 996.56 NE 996.54 SW 996.58 SE 996.39

Reference corner: SE

N 1.28

E -187.87

Deposit / Type

architectural

fill

Soil type

silty clay

Munsell/Color

2.5Y 3/3 Dark Brown

Drawings

Contents

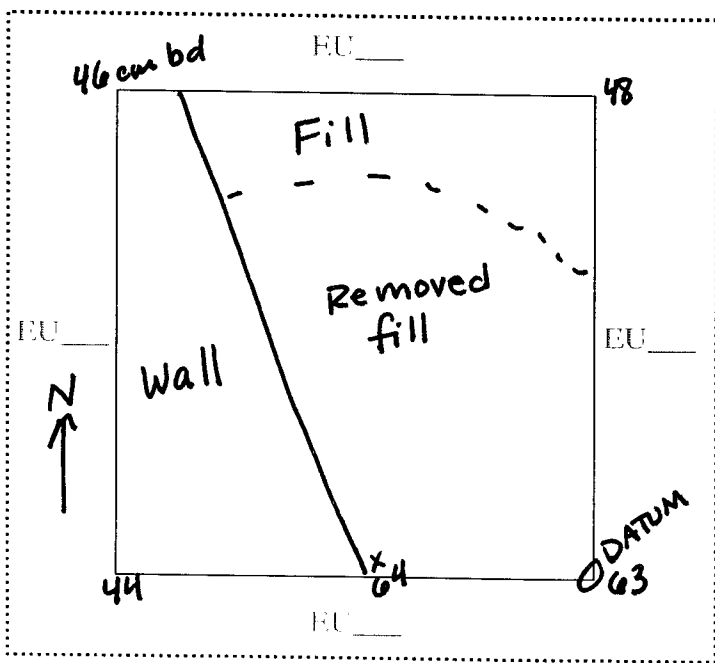
26 ceramica

4 obsidiana

1 pedernal

Photo/Digital

Description/Sketch (with measurements):



The purpose of this lot is to cut through the platform fill to investigate architectural composition and platform height.

Note refs

10

Op/SubOp/Lot: 10/16/07

Ex. Unit A

Size (NxEx) 1x1

Site: Los Naranjitos (S-007)

Str 7

Initial Lot? no

Prev. lot 5

Next lot 8

BGS: 60-75 cm

Initial elev.: NW 996.38 NE 996.36 SW 996.37 SE 996.36

Final elev.: NW 996.32 NE 996.31 SW 996.29 SE 996.27

Reference corner: SE of EUB

N 1.28

E -187.87

Deposit / Type - ~~to~~ architectural / wall

Soil type silty clay

Munsell/Color 2.5Y 3/3
Dark Brown

Drawings

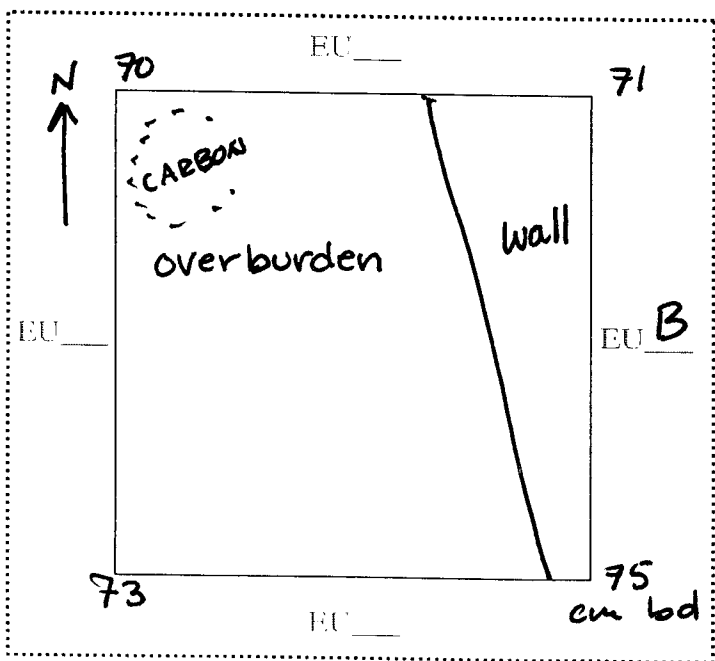
Contents 33 ceramica

Photo/Digital

2 obsidiana

carbon

Description/Sketch (with measurements):



The purpose of this lot is to reach sterile soil in the EU associated with the wall.

*Datum is located in the SE corner of EU B

Note refs 10

Op/SubOp/Lot: 10/16/08

Ex. Unit A

Size (NxEx) 1x1

Site: Los Navajitos (S-007)

Str 7

Initial Lot? no

Prev. lot 7

Next lot -

BGS: 75-85

Initial elev.: NW 996.32 NE 996.31 SW 996.29 SE 996.27

Final elev.: NW 996.17 NE 996.17 SW 996.15 SE 996.19

Reference corner: SW

N 1.95

E -189.73

Deposit / Type architectural

sediment

Soil type silty clay

Munsell/Color 2.5Y 3/3
Dark Brown

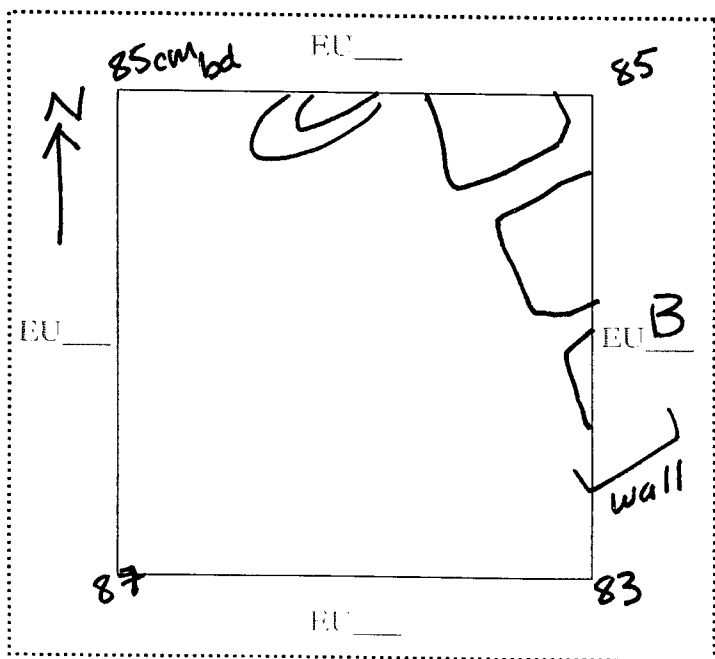
Drawings

Contents 15 ceramica

5 obsidiana

Photo/Digital

Description/Sketch (with measurements):



The purpose of this lot is to reach sterile soil in front of the wall & to see how the level relates to that of the wall.

*Datum is located in the SE corner of EU B.