

2008

## EPV Op. 10-20 Lot Forms 2008

Mary Hostenske

Follow this and additional works at: <https://digital.kenyon.edu/honduras>



Part of the Archaeological Anthropology Commons

---

### Recommended Citation

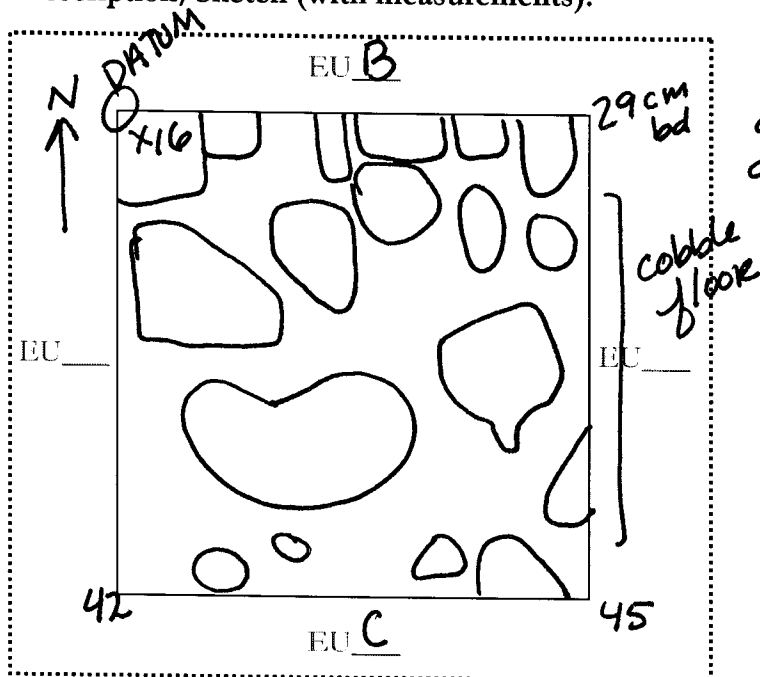
Hostenske, Mary, "EPV Op. 10-20 Lot Forms 2008" (2008). *Four Valleys Archive*. Paper 96717.  
<https://digital.kenyon.edu/honduras/96717>

This Lot Card is brought to you for free and open access by the Anthropology at Digital Kenyon: Research, Scholarship, and Creative Exchange. It has been accepted for inclusion in Four Valleys Archive by an authorized administrator of Digital Kenyon: Research, Scholarship, and Creative Exchange. For more information, please contact [noltj@kenyon.edu](mailto:noltj@kenyon.edu).

## PAREP 2008 LOT FORM

Excavator 17Date 24 June 2008Op/SubOp/Lot: 10/20/01 Ex. Unit A Size (NxEx) 1x1Site: Los Naranjitos (5007) Str 9Initial Lot? yes Prev. lot - Next lot 4 BGS: 0-45Initial elev.: NW 997.10 NE 997.04 SW ~~996.7~~ 996.89 SE 996.84Final elev.: NW 996.94 NE 996.81 SW 996.68 SE 996.65Reference corner: SE N 32.25 E -196.15Deposit / Type architectural / collapseSoil type silty loam Munsell/Color 10YR 3/3Drawings ✓ Contents 14 of ceramicaPhoto/Digital ✓ 1 obsidiana  
2 peridermal

## Description/Sketch (with measurements):

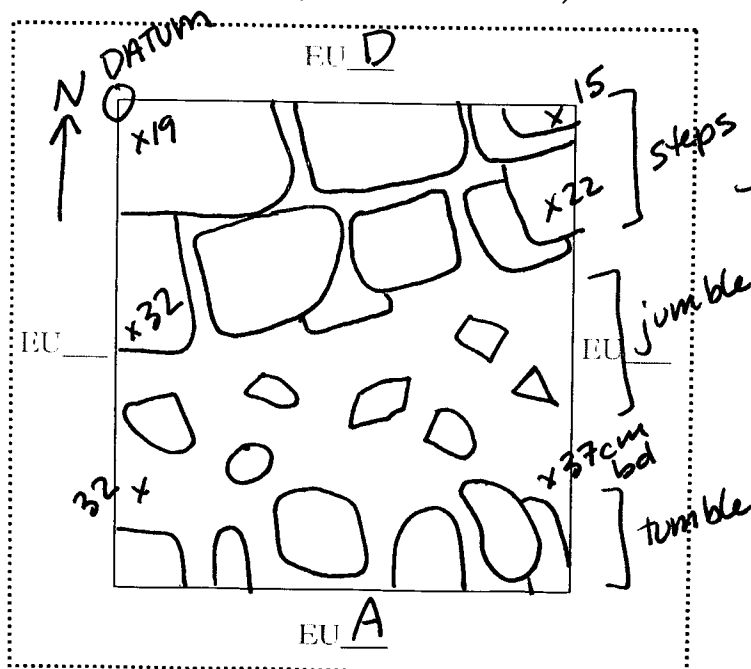


The purpose of this lot is to expose architecture in a manner that will determine the orientation of Str. 9.

Note refs 16

Op/SubOp/Lot: 10/20/02Ex. Unit BSize (NxEx) 1x1Site: Los Naranjitos (5-007)Str 9Initial Lot? yesPrev. lot -Next lot 43BGS: 0-37Initial elev.: NW 997.21 NE 997.20 SW 996.89 SE 996.86Final elev.: NW 997.02 NE 997.06 SW 996.89 SE 996.84Reference corner: SE N 33.22 E -195.97Deposit / Type architectural / collapseSoil type silty loam Munsell/Color 10YR 3/3Drawings ✓Contents 4 ceramicsPhoto/Digital ✓1 bajareque  
2 obsidian

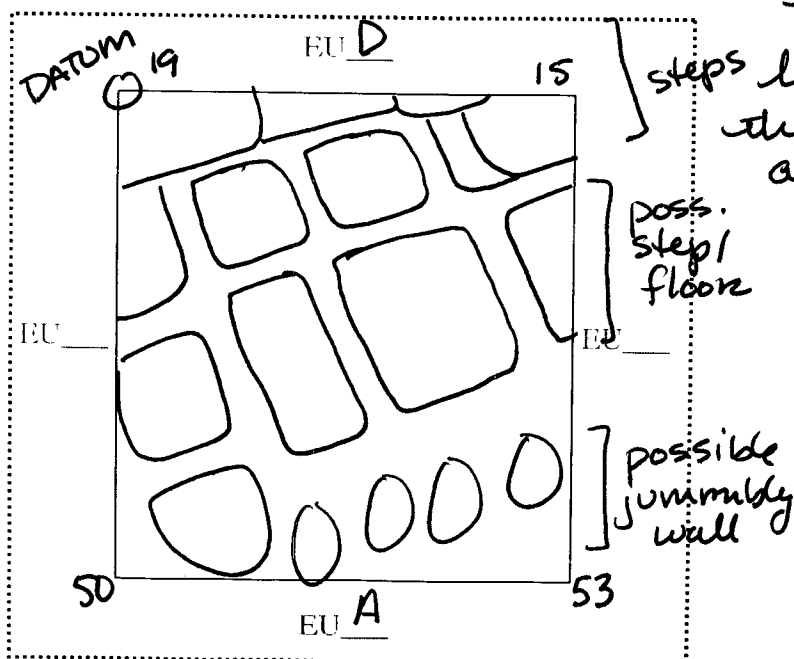
## Description/Sketch (with measurements):



The purpose of this lot is to expose architecture and define several features.

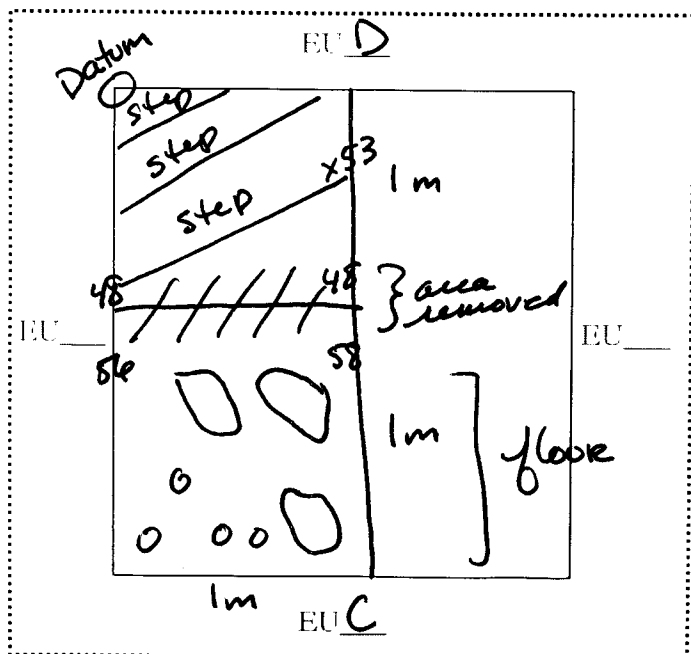
Op/SubOp/Lot: 10/20/03 Ex. Unit 13 Size (NxE) 1x1Site: Los Naranjitos (S-007) Str 9Initial Lot? no Prev. lot 2 Next lot 4 BGS: 37-53Initial elev.: NW 997.02 NE 997.06 SW 996.89 SE 996.84Final elev.: NW 997.02 NE 997.06 SW 996.71 SE 996.68Reference corner: SE N 33.22 E -195.97Deposit / Type architectural / collapseSoil type silty clay Munsell/Color 2.5Y 3/2Drawings ✓ Contents 1 bajarequePhoto/Digital ✓ 1 ceramica

## Description/Sketch (with measurements):



Op/SubOp/Lot: 10/20/04 Ex. Unit A/B Size (NxEx) 2x1Site: Los Naranjitos (S-007) Str 9Initial Lot? no Prev. lot 3 Next lot 5 BGS: 53-58Initial elev.: NW 997.02 NE 997.06 SW 996.68 SE 996.65Final elev.: NW 997.02 NE 997.06 SW 996.65 SE 996.63Reference corner: SE N 33.22 E -195.97Deposit / Type architectural / collapseSoil type silty clay Munsell/Color 2.5Y 3/2Drawings ✓ Contents 1 bajarequePhoto/Digital ✓ 1 pedernal

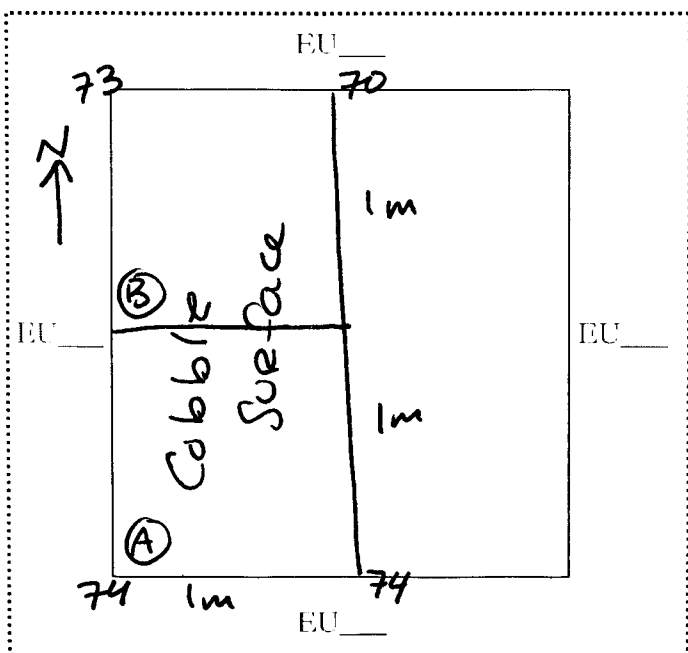
## Description/Sketch (with measurements):



This lot includes both  
 EUs A & B. & involves  
 the removal of a jumble  
 of rocks btwn the two  
 units that was originally  
 presumed to be a step.

Op/SubOp/Lot: 10/20/05 Ex. Unit A/B Size (NxEx) 2x1Site: Los Naranjitos (S-007) Str 9Initial Lot? no Prev. lot 4 Next lot - BGS: 58-74Initial elev.: NW 997.02 NE 997.06 SW 996.65 SE 996.63Final elev.: NW 997.02 NE 997.06 SW 996.47 SE 996.47Reference corner: SE N 33.22 E -195.97Deposit / Type architectural / CollapseSoil type silty clay Munsell/Color 2.5Y 3/2Drawings ✓ Contents 5 ceramicaPhoto/Digital ✓ 4 peridernal  
3 opsidiana  
toba

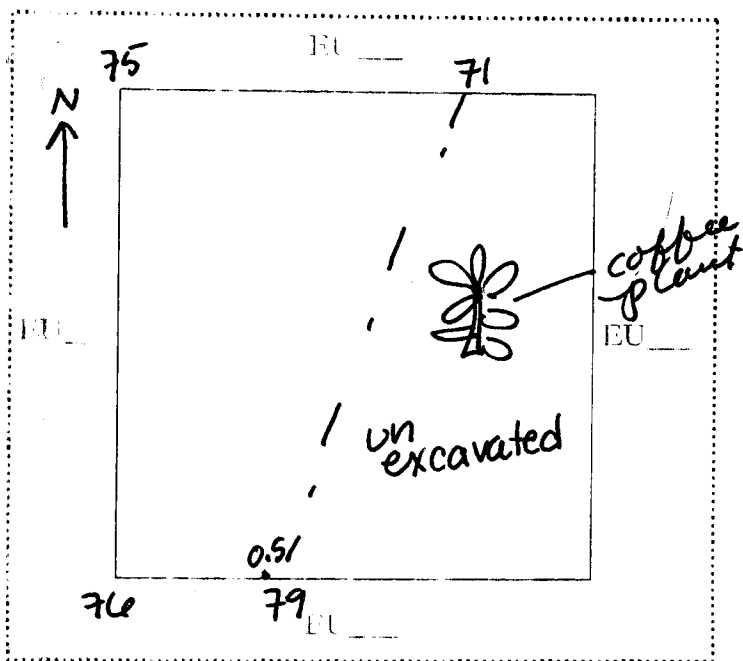
## Description/Sketch (with measurements):



The purpose of this lot is to expose the cobble surface by cleaning & removing tumble

Op/SubOp/Lot: 10/20/06Ex. Unit CSize (NxE) 1x1Site Los Navajitos (S-007)Str 9Initial Lot: yesPrev. lot -Next lot -BGS: 0-79Initial elev. NW 996.89 NE 996.86 SW 996.7 SE 996.74Final elev. NW 995.95 NE 995.99 SW 995.94 SE 995.91Reference corner SE N 31.40 E -197.26Deposit type architecturalcollapseSoil type silty loamMunsell/Color 10YR 3/3Drawings ☒Contents 10 ceramicaPhoto/Digital ☒1 metal

## Description/Sketch (with measurements):



Am looking for  
edge of cobble surface

Note refs 25

Op/SubOp/Lot: 10/20/07Ex. Unit DSize (NxEx) 1x1Site: Los Navajitos (S-007)Str 9Initial Lot? yesPrev. lot -Next lot -BGS: 0-49Initial elev.: NW 997.37 NE 997.29 SW 997.21 SE 997.20Final elev.: NW 996.98 NE 996.88 SW 997.00 SE 997.08Reference corner: NEN 35.25E -195.64

Deposit / Type

architectural

/

collapse

Soil type

silty loam

Munsell/Color

10YR 3/3

Drawings

☒

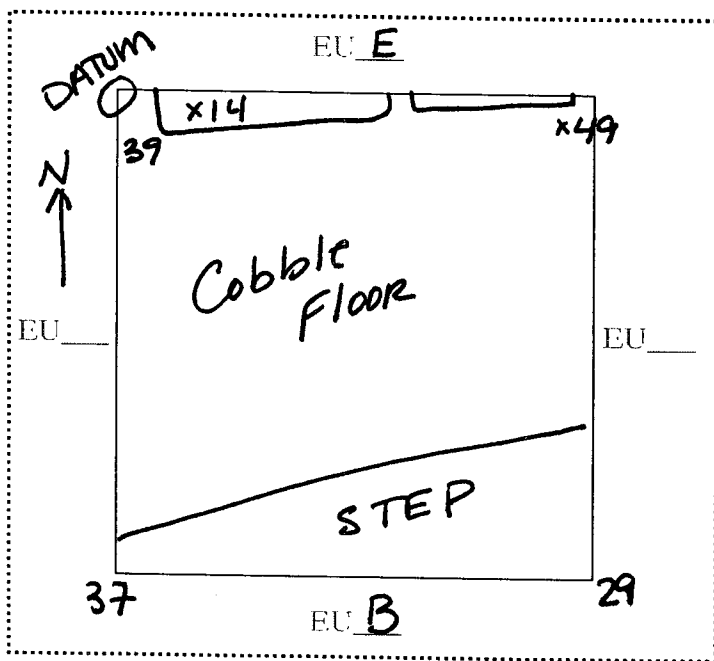
Contents

8 ceramics1 peridural

Photo/Digital

☒

## Description/Sketch (with measurements):



The purpose of this lot is to follow the line of the step & expose any summit features.

Note refs

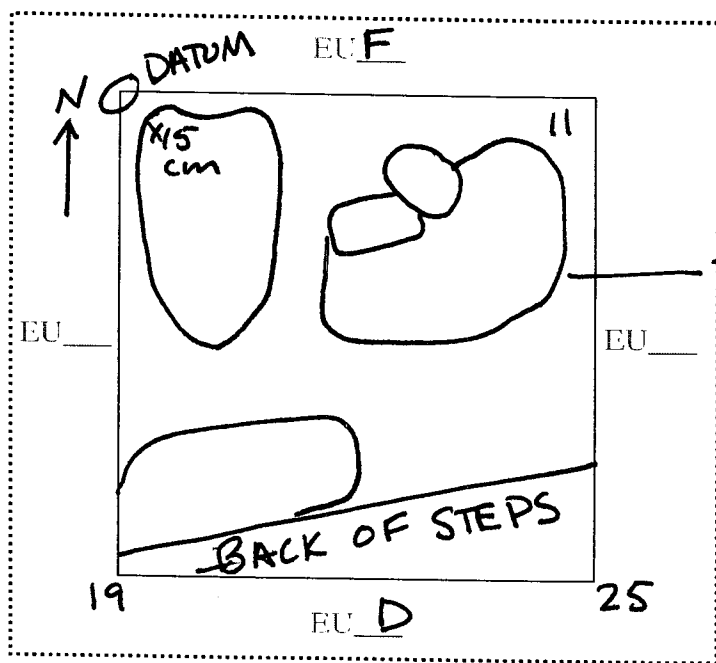
25



## PAREP 2008 LOT FORM

Excavator 17Date 27 June 2008Op/SubOp/Lot: 10/20/08 Ex. Unit E Size (NxF) 1x1Site: Los Naranjitos (5-007) Str 9Initial Lot? yes Prev. lot - Next lot - BGS: 0-25cmInitial elev.: NW 997.45 NE 997.37 SW 997.37 SE 997.29Final elev.: NW 997.30 NE 997.34 SW 997.26 SE 997.20Reference corner: SE N 35.25 E -195.64Deposit / Type overburden / collapse sediment  
~~architectural~~Soil type silty loam Munsell/Color 10YR 3/3Drawings ✓Contents 4 ceramics  
1 obsidianPhoto/Digital ✓

## Description/Sketch (with measurements):



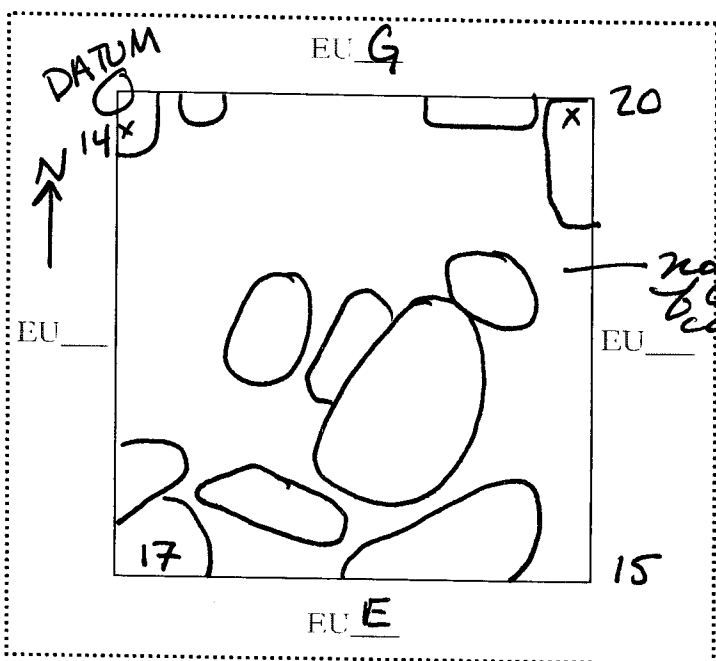
The purpose of this lot is to expose the summit.

nice flat cobbles

Note refs 27

Op/SubOp/Lot: 10/20/09 Ex. Unit F Size (NxF) 1x1Site: Los Naranjitos (S-007) Str 9Initial Lot? yes Prev. lot - Next lot - BGS: 0-20Initial elev.: NW 997.49 NE 997.42 SW 997.45 SE 997.37Final elev.: NW 997.35 NE 997.29 SW 997.32 SE 997.34Reference corner: NE N 37.25 E -195.39Deposit / Type overburden / sediment / collapseSoil type silty loam Munsell/Color 10YR 3/3Drawings ✓ Contents 5 ceramicaPhoto/Digital ✓ 2 bajareque  
1 toba

## Description/Sketch (with measurements):



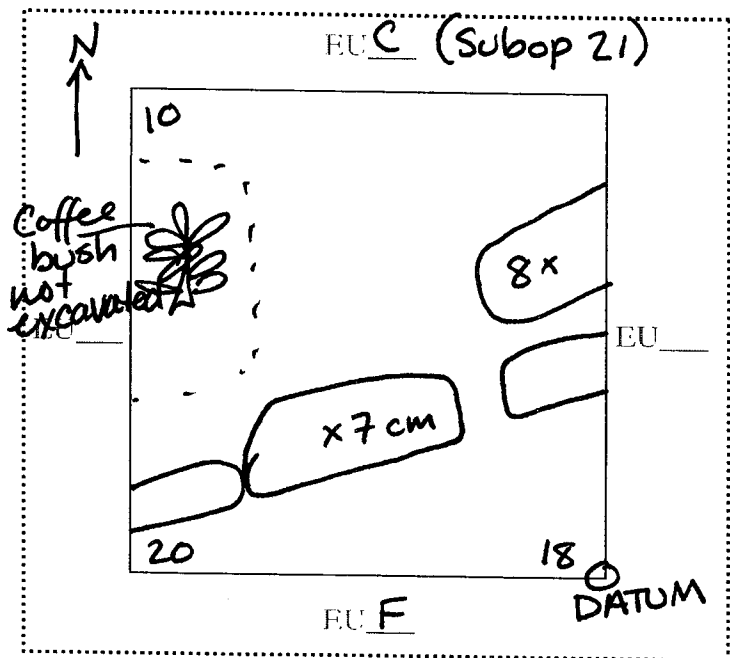
The purpose of this lot is to follow the floor & find the south face of the northern basal wall.

Note refs 27

## PAREP 2008 LOT FORM

Excavator 17Date 27 June 2008Op/SubOp/Lot: 10/20/10 Ex. Unit G Size (NxL) 1x1~~35~~Site: Las Navajitas (S-007) Str 9Initial Lot? yes Prev. lot - Next lot - BGS: 0-20Initial elev.: NW 997.42 NE 997.36 SW 997.49 SE 997.42Final elev.: NW 997.32 NE 997.34 SW 997.22 SE 997.24Reference corner: SE N 37.25 E -195.39Deposit / Type overburden / sediment & collapsSoil type silty loam Munsell/Color 10YR 3/3Drawings ✓ Contents sterilePhoto/Digital ✓

## Description/Sketch (with measurements):



The purpose of this lot is to expose summit features.

Note refs 28