
Four Valleys Archive

Anthropology

2006

EPV Op. 13-03 Lot Forms 2007

Mary Hostenske

Follow this and additional works at: <https://digital.kenyon.edu/honduras>

 Part of the Archaeological Anthropology Commons

Recommended Citation

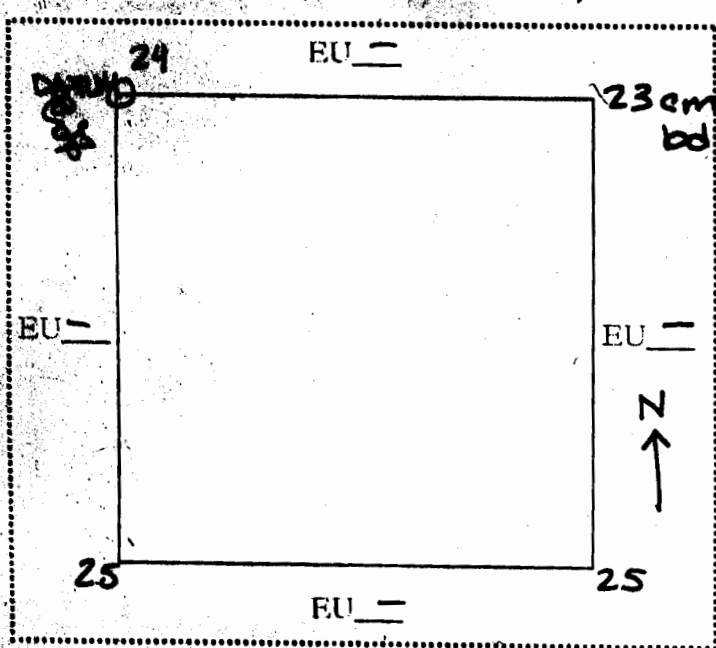
Hostenske, Mary, "EPV Op. 13-03 Lot Forms 2007" (2006). *Four Valleys Archive*. Paper 96768.
<https://digital.kenyon.edu/honduras/96768>

This Lot Card is brought to you for free and open access by the Anthropology at Digital Kenyon: Research, Scholarship, and Creative Exchange. It has been accepted for inclusion in Four Valleys Archive by an authorized administrator of Digital Kenyon: Research, Scholarship, and Creative Exchange. For more information, please contact noltj@kenyon.edu.

PAREP 2007 LOT FORM

Excavator 17Date 19 June 2007Op/SubOp/Lot: 13/3/1Ex. Unit ASize (NxEx) 1x1Site: E1 ZACATAL (S-025)Str PATIOInitial Lot? ☒ Prev. lot - Next lot 2 BGS: 0-20 cmInitial elev.: NW 978.76 NE 978.73 SW 978.68 SE 978.69Final elev.: NW 978.52 NE 978.53 SW 978.51 SE 978.51Reference corner: NW N 901.62 E -1,899.53Deposit / Type overburden / humusSoil type fine silty loam Munsell/Color 7.5YR 3/2 dk bnDrawings ☒ Contents 2 ceramicaPhoto/Digital ☒

Description/Sketch (with measurements):



EU A is a single 1x1 EU located in the plaza between Str. 1 & Str. 9. The purpose of this EU is to see what the living surface was like & hopefully collect artifacts.

Lot #1 may have uncovered a living surface.

Note refs. 30

Op/SubOp/Lot: 13/3/2Ex. Unit ASize (NxEx) 1x1Site: EI ZACATAL (S-025)Str PATIOInitial Lot? 1Prev. lot 1Next lot 3BGS: 20 - 40 cmInitial elev.: NW 978.52 NE 978.53 SW 978.51 SE 978.51Final elev.: NW 978.32 NE 978.29 SW 978.27 SE 978.30Reference corner: NWN 901.62E -1,899.53

Deposit / Type

architectural

/

living surface/patio floorSoil type dense clayMunsell/Color 10 YR 6/4 mottled w/ 7.5 YR 5/8 (15%)
and 20% 5YR 5/8

Drawings

☒

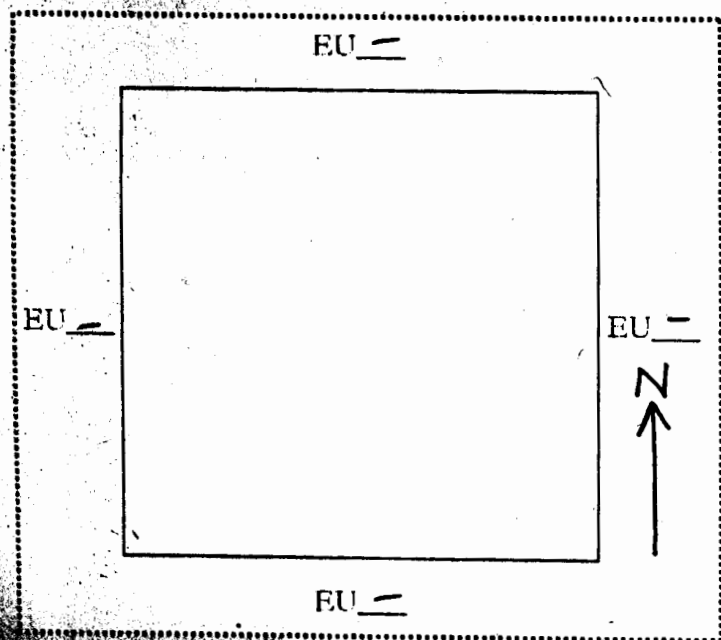
Contents

Sterile

Photo/Digital

☒

Description/Sketch (with measurements):



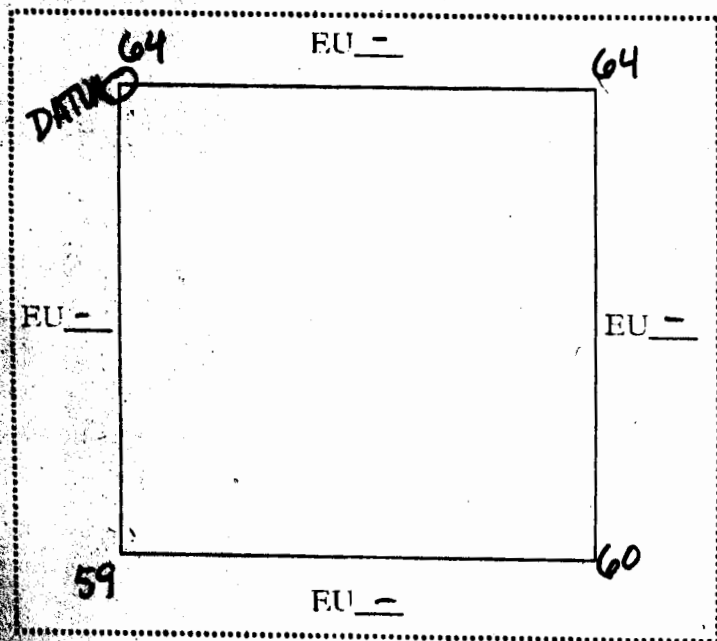
This lot consists of very dense clay that seems to have been used as a living surface - since no artifacts have been found ~~in it~~ in it.

Note refs

31

Op/SubOp/Lot: 13/3/3Ex. Unit ASize (NxEx) 1x1Site: E1 ZACATAL (S-025)Str PatioInitial Lot? 1 Prev. lot 2 Next lot - BGS: 40-60cmInitial elev.: NW 978.32 NE 978.29 SW 978.27 SE 978.30Final elev.: NW 978.12 NE 978.12 SW 978.17 SE 978.16Reference corner: NW N 901.62 E -1,899.53Deposit / Type architectural / floor surface / sedimentSoil type dense clay10YR 6/4 mottled w/ 7.5YR 5/8 & 5YR 5/8
Munsell/Color 15% 20%Drawings ✓Contents SterilePhoto/Digital ✓

Description/Sketch (with measurements):



This is the final lot in EU A. The purpose of this lot was to ascertain whether the floor was man made or natural & culturally modified.

Note refs

31