
Four Valleys Archive

Anthropology

2006

EPV Op. 02-30 Lot Forms 2006

John Compton

Follow this and additional works at: <https://digital.kenyon.edu/honduras>



Part of the Archaeological Anthropology Commons

Recommended Citation

Compton, John, "EPV Op. 02-30 Lot Forms 2006" (2006). *Four Valleys Archive*. Paper 96777.
<https://digital.kenyon.edu/honduras/96777>

This Lot Card is brought to you for free and open access by the Anthropology at Digital Kenyon: Research, Scholarship, and Creative Exchange. It has been accepted for inclusion in Four Valleys Archive by an authorized administrator of Digital Kenyon: Research, Scholarship, and Creative Exchange. For more information, please contact noltj@kenyon.edu.

PAREP 2006 LOT FORM

Excavator 28

Date 2006 Feb 6

Op/SubOp/Lot: 02-30-01

Ex. Unit A

Size (NxEx) 1m x 1m

Site: El Cafetal

Str Plaza

Initial Lot? y Prev. lot - Next lot 02-30-02 BGS: 0-10 cm

Initial elev.: NW 999.99 NE 999.99 SW 999.99 SE 999.99

Final elev.: NW 999.89 NE 999.89 SW 999.89 SE 999.89

Depositional significance Single layer of topsoil

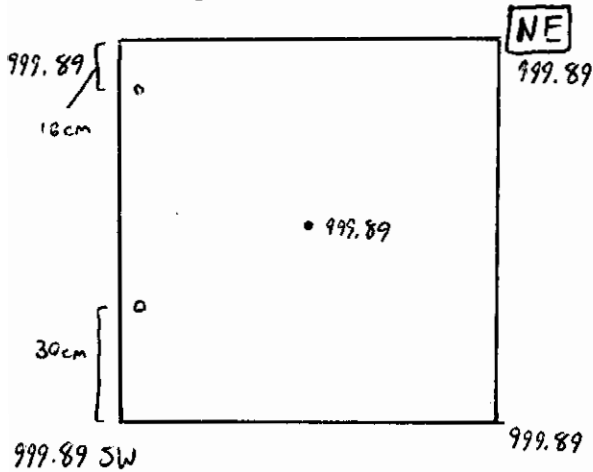
Soil type Topsoil with clay Munsell/Color _____

Drawings N/A

Contents Pigment Stone (1)

Photo/Digital N/A

Description/Sketch (with measurements):



The two small circles are 2 cm wide holes that continue into the ground.

The soil type starts with 3 cm of topsoil and then becomes more of a clay-soil mixture.

The northeast corner is a little moister than the rest.

Note refs Pages 1 and 2

PAREP 2006 LOT FORM

Excavator 28

Date 7 Feb 2006

Op/SubOp/Lot: 02-30-02

Ex. Unit A

Size (NxF) 1m x 1m

Site: El Cafetal

Str Plaza

Initial Lot? N Prev. lot 02-30-01 Next lot 02-30-03 BGS: 10-20cm

Initial elev.: NW 999.89 NE 999.89 SW 999.89 SE 999.89

Final elev.: NW 999.79 NE 999.79 SW 999.79 SE 999.79

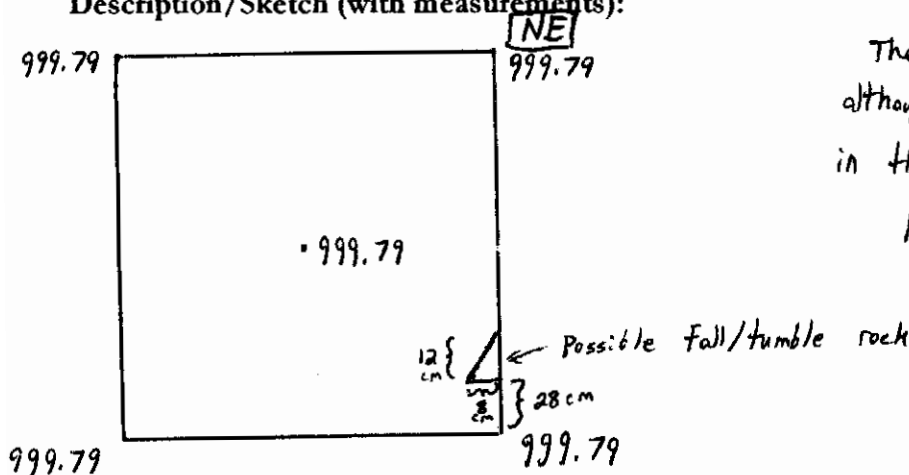
Depositional significance Overburden

Soil type Clay Munsell/Color _____

Drawings _____ Contents Bajareque, ceramics, obsidian

Photo/Digital N/A

Description/Sketch (with measurements):



The clay-like soil continues, although there are many more artifacts in this lot.

Note the possible fall on the eastern side.

Notes ref: ~~Pages 3-4~~
Pages 2-4

PAREP 2006 LOT FORM

Excavator 28

Date 7 Feb 2006

Op/SubOp/Lot: 02-30-03

Ex. Unit A

Size (NxEx) 1m x 1m

Site: El Cafeta

Str Plaza

Initial Lot? N Prev. lot 02-30-02 Next lot 02-30-04 BGS: 20-30

Initial elev.: NW 999.79 NE 999.79 SW 999.79 SE 999.79

Final elev.: NW 999.69 NE 999.69 SW 999.69 SE 999.69

Depositional significance Over burden

Soil type Hard clay

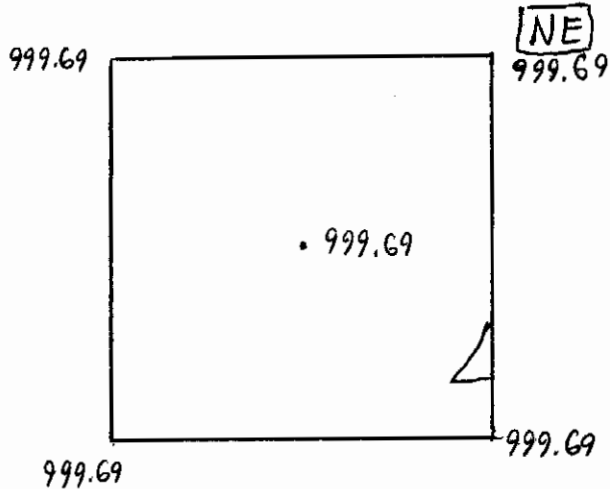
Munsell/Color _____

Drawings N/A

Contents Ceramics, bajareque, obsidian

Photo/Digital N/A

Description/Sketch (with measurements):



No soil change beyond slightly higher amount of compaction.

Fall/Tumble stone still present and excavated under

Note refs Page 4

PAREP 2006 LOT FORM

Excavator 28

Date 7 Feb 2006

Op/SubOp/Lot: 02 - 30 - 04

Ex. Unit A

Size (NxEx) 1m x 1m

Site: El Cafetal

Str Plaza

Initial Lot? N Prev. lot 02-30-03 Next lot 02-30-05 BGS: 30-40

Initial elev.: NW 999.69 NE 999.69 SW 999.69 SE 999.69

Final elev.: NW 999.59 NE 999.59 SW 999.59 SE 999.59

Depositional significance Overburden

Soil type Hard Clay (Clayey Silt)

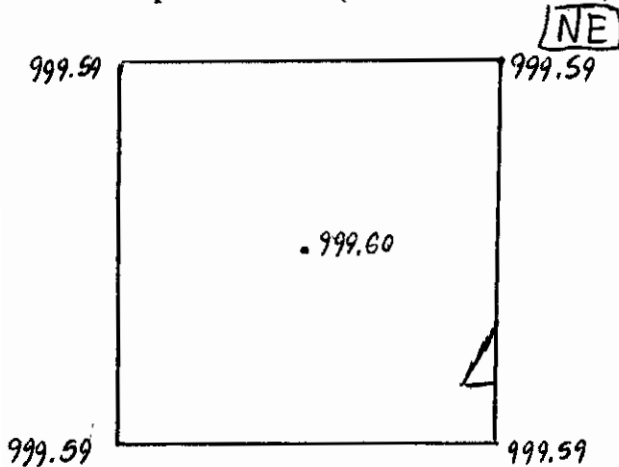
Munsell/Color _____

Drawings N/A

Contents Ceramics, pigment stone (?)

Photo/Digital N/A

Description/Sketch (with measurements):



Very little cultural material

Soil PH - 6.5 (Taken at 35 cm BGS)

No visible soil change

Note refs Pages 5-6

PAREP 2006 LOT FORM

Excavator 28

Date 8 Feb 2006

Op/SubOp/Lot: 02-30-05

Ex. Unit A

Size (NxEx) 1m x 1m

Site: El Cafetal

Str Plaza

Initial Lot? N Prev. lot 02-30-04 Next lot 02-30-06 BGS: 40-50

Initial elev.: NW 999.59 NE 999.59 SW 999.59 SE 999.59

Final elev.: NW 999.49 NE 999.49 SW 999.49 SE 999.49

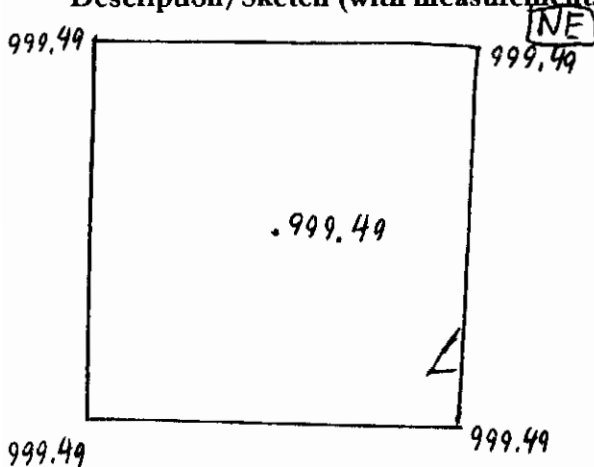
Depositional significance Overburden

Soil type Clayey silt Munsell/Color _____

Drawings N/A Contents Ceramics (2)

Photo/Digital N/A

Description/Sketch (with measurements):



Slight lightening of soil color

Note refs Pages 6-7

PAREP 2006 LOT FORM

Excavator 28

Date 8 Feb 2006

Op/SubOp/Lot: 02-30-06

Ex. Unit A

Size (NxEx) 1mx1m

Site: El Cafetal

Str Plaza

Initial Lot? N Prev. lot 02-30-05 Next lot 02-30-07 BGS: 50-60 cm

Initial elev.: NW 999.49 NE 999.49 SW 999.49 SE 999.49

Final elev.: NW 999.39 NE 999.39 SW 999.39 SE 999.39

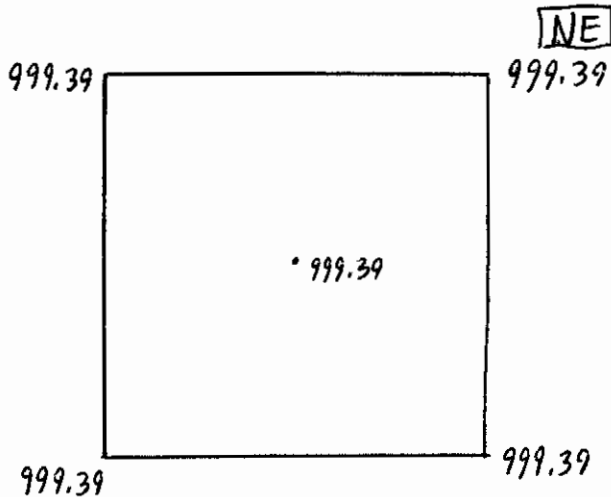
Depositional significance Overburden

Soil type Clayey Silt Munsell/Color _____

Drawings N/A Contents No cultural Material Found

Photo/Digital N/A

Description/Sketch (with measurements):



No soil change
 Note the lack of the tumble rock.
 It does not extend to this level
 at all, so is not diagrammed.

Note refs Pages 7-8

PAREP 2006 LOT FORM

Excavator 28

Date 9 Feb 2006

Op/SubOp/Lot: 02-30-07

Ex. Unit A

Size (NxEx) 1m x 1m

Site: El Cafetal

Str Plaza

Initial Lot? N Prev. lot 02-30-06 Next lot 02-30-08 BGS: 60-70 cm

Initial elev.: NW 999.39 NE 999.39 SW 999.39 SE 999.39

Final elev.: NW 999.29 NE 999.29 SW 999.29 SE 999.29

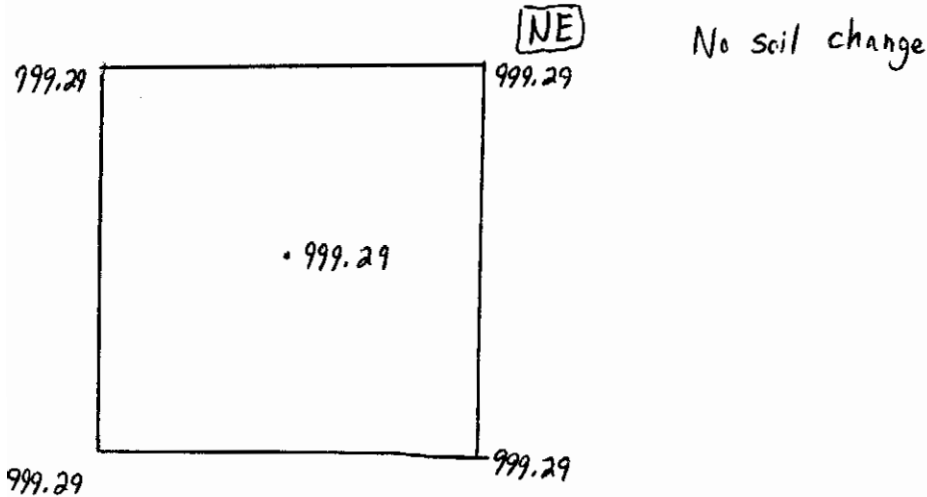
Depositional significance Overburden

Soil type Clayey silt Munsell/Color _____

Drawings N/A Contents Ceramics (9)

Photo/Digital N/A

Description/Sketch (with measurements):



PAREP 2006 LOT FORM

Excavator 28

Date 9 Feb 2006

Op/SubOp/Lot: 02-30-08

Ex. Unit A

Size (NxEx) 1m x 1m

Site: El Cafetal

Str Plaza

Initial Lot? N Prev. lot 02-30-07 Next lot 02-30-09 BGS: 70-80 cm

Initial elev.: NW 999.29 NE 999.29 SW 999.29 SE 999.29

Final elev.: NW 999.19 NE 999.19 SW 999.19 SE 999.19

Depositional significance Overburden with soil changes.

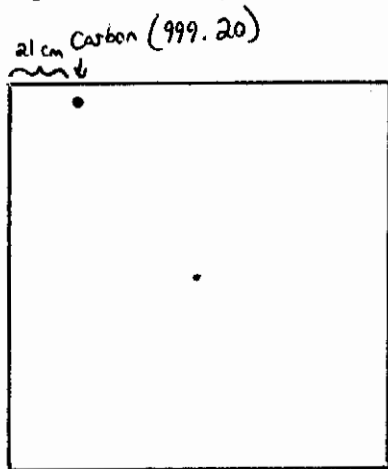
Soil type Clayey silt / Clayey Sand Munsell/Color _____

Drawings N/A

Contents Carbon (1)

Photo/Digital N/A

Description/Sketch (with measurements):



This lot saw soil change at about 75 cm BGS to a clayey sand of the same color. Samples of both with a sample of gray clay were bagged for later analysis.

PAREP 2006 LOT FORM

Excavator 28

Date 9 Feb 2006

Op/SubOp/Lot: 02-30-09

Ex. Unit A

Size (NxP): 1m x 1m

Site: El Cafetal

Str Plaza

Initial Lot? N Prev. lot 02-30-08 Next lot 02-30-10 BGS: 80-90 cm

Initial elev.: NW 999.19 NE 999.19 SW 999.19 SE 999.19

Final elev.: NW 999.09 NE 999.09 SW 999.09 SE 999.09

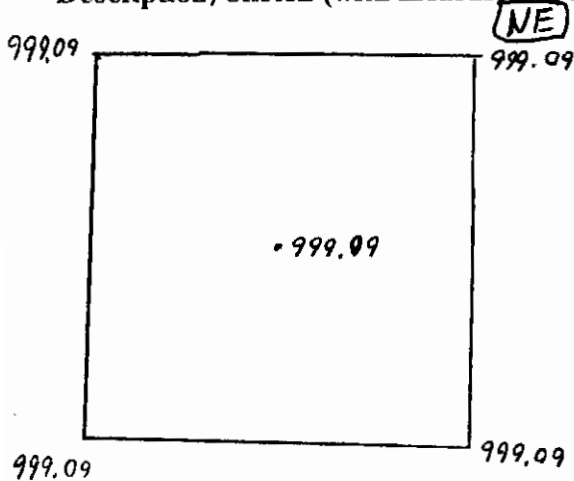
Depositional significance Overburden

Soil type Clayey Sand Munsell/Color _____

Drawings N/A Contents Ceramics (2)

Photo/Digital N/A

Description/Sketch (with measurements):



Note refs Pages 10-11

PAREP 2006 LOT FORM

Excavator 28

Date 10 Feb 2006

Op/SubOp/Lot: 02-30-10

Ex. Unit A

Size (NxF) 1m x 1m

Site: El Cafetal

Str Plaza

Initial Lot? N Prev. lot 02-30-09 Next lot _____ BGS: 90-100

Initial elev.: NW 999.09 NE 999.09 SW 999.09 SE 999.09

Final elev.: NW 998.99 NE 998.99 SW 998.99 SE 998.99

Depositional significance Overburden

Soil type Clayey Sand Munsell/Color _____

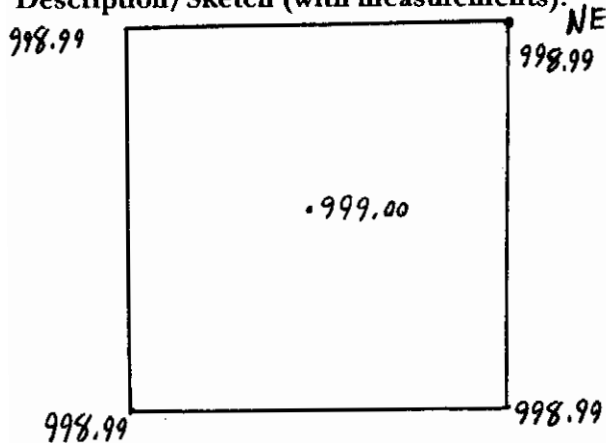
Drawings N/A

Contents No cultural material

Small Carbon deposit (1)

Photo/Digital N/A

Description/Sketch (with measurements):



Note refs Pages 11-12

PAREP 2006 LOT FORM

Excavator 28

Date 13 Feb 2006

Op/SubOp/Lot: 02-30-11

Ex. Unit A

Size (NxP) 1m x 1m

Site: El Cafeta

Str Plaza

Initial Lot? N Prev. lot 02-30-10 Next lot 02-30-12 BGS: 100-110 cm

Initial elev.: NW 998.99 NE 998.99 SW 998.99 SE 998.99

Final elev.: NW 998.89 NE 998.89 SW 998.89 SE 998.89

Depositional significance Overburden with possible start of architecture

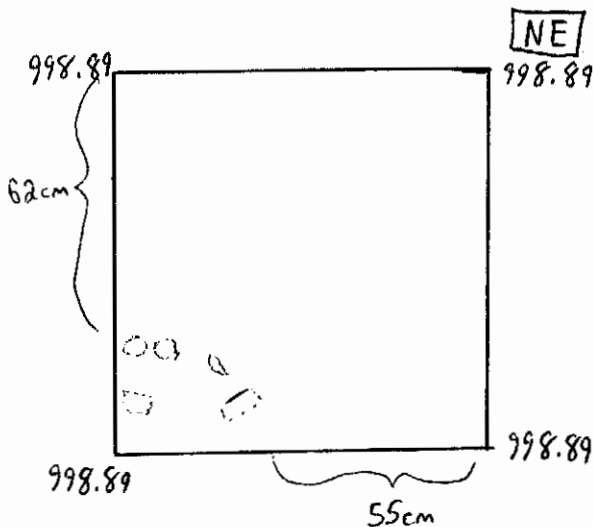
Soil type Clayey Sand Munsell/Color _____

Drawings N/A

Contents No cultural material

Photo/Digital N/A

Description/Sketch (with measurements):



A few rocks are beginning to surface in the south west, but the final lot surface only reveals about one centimeter of each.

Note refs 13

PAREP 2006 LOT FORM

Excavator 28

Date 13 Feb 2006

Op/SubOp/Lot: 02-30-12

Ex. Unit A

Size (NxEx) 1m x 1m

Site: El Cafetal

Str Plaza

Initial Lot? N Prev. lot 02-30-11 Next lot 02-30-13 BGS: 110-120

Initial elev.: NW 998.89 NE 998.89 SW 998.89 SE 998.89

Final elev.: NW 998.79 NE 998.79 SW 998.79 SE 998.79

Depositional significance Overburden

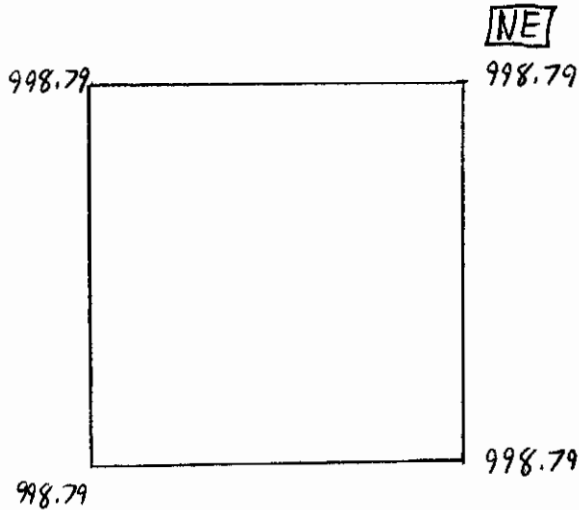
Soil type Clayey Sand with rocky inclusions Munsell/Color _____

Drawings N/A

Contents Ceramics (2), Pigment Stones (12)

Photo/Digital N/A

Description/Sketch (with measurements):



There are small rocks, mostly smaller than 6 cm to a side, scattered throughout the lot. The soil feels very sandy, though soil tests say it's still clayey sand.

Note refs 14

PAREP 2006 LOT FORM

Excavator 28

Date 14 Feb 2006

Op/SubOp/Lot: 02-30-13

Ex. Unit A

Size (NxEx) 1m x 1m

Site: El Cafetal

Str Plaza

Initial Lot? N Prev. lot 02-30-12 Next lot 02-30-14 BGS: 120-130

Initial elev.: NW 998.79 NE 998.79 SW 998.79 SE 998.79

Final elev.: NW 998.69 NE 998.69 SW 998.69 SE 998.69

Depositional significance Overburden

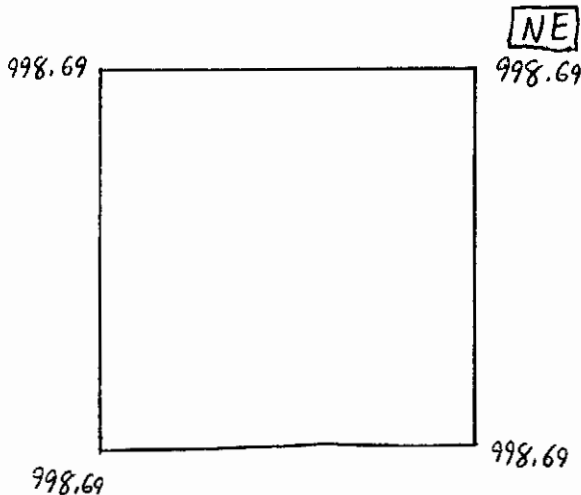
Soil type Clayey Sand Munsell/Color _____

Drawings N/A

Contents Pigment Stone (4), Carbon (1)

Photo/Digital N/A

Description/Sketch (with measurements):



More ~~egg~~ sandy soil, more pigment stone, more small rocks.

Note refs 15

PAREP 2006 LOT FORM

Excavator 28 Date 14 Feb 2006

Op/SubOp/Lot: 02-30-104 Ex. Unit A Size (NxF) 1m x 1m

Site: El Cafetal Str Plaza

Initial Lot? N Prev. lot 02-30-13 Next lot 02-30-15 BGS: 130-140

Initial elev.: NW 998.69 NE 998.69 SW 998.69 SE 998.69

Final elev.: NW 998.59 NE 998.59 SW 998.59 SE 998.59

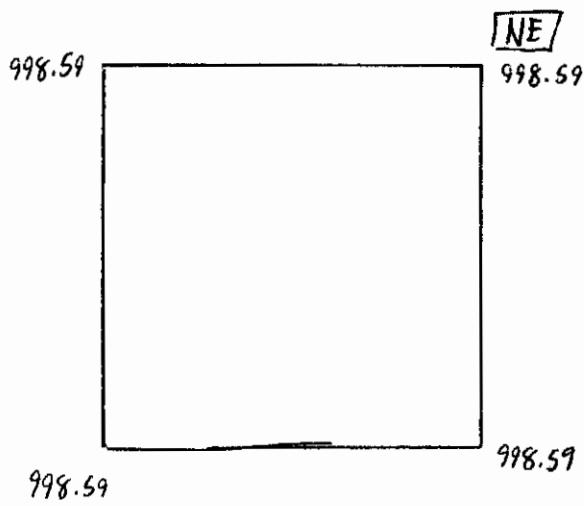
Depositional significance Overburden

Soil type Clayey Sand Munsell/Color _____

Drawings N/A Contents Pigment Stone (1)

Photo/Digital N/A

Description/Sketch (with measurements):



Same as before with sandy soil, small rocks that crumble easily, and the occasional pigment stone.

Note refs 16

PAREP 2006 LOT FORM

Excavator 28

Date 14 Feb 2006

Op/SubOp/Lot: 02-30-15

Ex. Unit A

Size (NxEx) 1m x 1m

Site: El Cafetal

Str Plaza

Initial Lot? N Prev. lot 02-30-14 Next lot - BGS: 140-152cm

Initial elev.: NW 998.59 NE 998.59 SW 998.59 SE 998.59

Final elev.: NW 998.49 NE 998.49 SW 998.49 SE 998.47

Depositional significance Overburden

Soil type Clayey Sand Munsell/Color _____

Drawings N/A Contents Ceramics (1)

Photo/Digital N/A

Description/Sketch (with measurements):

Note refs 16-17