

2006

## EPV Op. 02-38 Lot Forms 2006

Whitney Goodwin

Follow this and additional works at: <https://digital.kenyon.edu/honduras>

 Part of the Archaeological Anthropology Commons

---

### Recommended Citation

Goodwin, Whitney, "EPV Op. 02-38 Lot Forms 2006" (2006). *Four Valleys Archive*. Paper 96785.  
<https://digital.kenyon.edu/honduras/96785>

This Lot Card is brought to you for free and open access by the Anthropology at Digital Kenyon: Research, Scholarship, and Creative Exchange. It has been accepted for inclusion in Four Valleys Archive by an authorized administrator of Digital Kenyon: Research, Scholarship, and Creative Exchange. For more information, please contact [noltj@kenyon.edu](mailto:noltj@kenyon.edu).

## PAREP 2006 LOT FORM

Excavator 30 WAG Date 2006-Feb-14Op/SubOp/Lot: 02/38/01 Ex. Unit A Size (NxF) 1x1mSite: El Cafetal (S-002) Str 02Initial Lot? Yes Prev. lot NA Next lot 02 BGS: 0-20 cmInitial elev.: NW <sup>1000.90</sup> ~~(0) 1000.87~~ NE ~~(0) 1000.97~~ SW ~~(0) 1000.87~~ SE ~~(0) 1000.97~~Final elev.: NW ~~(-20) 1000.70~~ NE ~~(-20) 1000.77~~ SW ~~(-20) 1000.67~~ SE ~~(-20) 1000.77~~Depositional significance overburden/humusSoil type clay silt Munsell/Color 10 YR 4/3 Brown (wet)Drawings NA Contents nonePhoto/Digital NA

## Description/Sketch (with measurements):

Many roots and bugs found in the top soil.

Easy to dig through.

No change in this soil throughout the 20cm lot.  
Will continue with 10cm lots from here because  
the floor should be close - we only went with 20cm  
because there was no change in soil and Op 02/37  
had the same thick layer of top soil.

No artifacts.

No bags to the lab.

Note refs 2006-30-(20)

## PAREP 2006 LOT FORM

Excavator 30 WAG Date 2006-Feb-15Op/SubOp/Lot: 02/38/02 Ex. Unit A Size (NxEx) 1x1 mSite: El Cafetal (S-002) Str 02Initial Lot? No Prev. lot 01 Next lot 03 BGS: 20-30 cmInitial elev.: NW (-20) 1000.70 NE (-20) 1000.77 SW (-20) 1000.67 SE (-20) 1000.77Final elev.: NW (-30) 1000.60 NE (-30) 1000.67 SW (-30) 1000.57 SE (-30) 1000.67Depositional significance overburden/humusSoil type clay silt Munsell/Color 10 YR 4/3 BrownDrawings NA Contents ceramics, chert, obsidian, lithic,Photo/Digital NA bajareque, toba

## Description/Sketch (with measurements):

No soil change

Still many roots, a few fist-sized rocks, no bugs.

Many artifacts, a large range of types:

6 - chert 1 - Toba 2 - obsidian 1 - bajareque  
2 - lithic 51 - ceramic

One ceramic handle, some decorated, many thick.

Small pieces of obsidian and bajareque

Toba appears to be worked

1 bag to the lab

Note refs 2006-30-(20,21)

## PAREP 2006 LOT FORM

Excavator 30 WAGDate 2006-Feb-15Op/SubOp/Lot: 02/38/03 Ex. Unit A Size (NxF) 1x1 mSite: El Cafetal (S-002) Str 02Initial Lot? No Prev. lot 02 Next lot 04 BGS: 30-40 cmInitial elev.: NW (-30) 1000.60 NE (-30) 1000.67 SW (-30) 1000.57 SE (-30) 1000.67Final elev.: NW (-40) 1000.56 NE (-40) 1000.57 SW (-40) 1000.57 SE (-40) 1000.57Depositional significance overburden/humusSoil type silt Munsell/Color 10 YR 4/3 BrownDrawings NA Contents ceramics, chert, obsidian, toba,  
lithicPhoto/Digital NA

## Description/Sketch (with measurements):

Dry soil of same type and color as earlier. A few small rocks  
No noticeable floor at this level.

Mostly ceramics - one large piece (10 cm) at 40 cm BGS.

One obsidian blade and a small flake.

One piece of toba.

One large rock with a flat surface

One large piece of chert

1 bag to the lab

Note refs 2006-30-(21,22)

## PAREP 2006 LOT FORM

Excavator 30 WAG Date 2006-Feb-15Op/SubOp/Lot: 02/38/04 Ex. Unit A Size (NxEx) 1x1 mSite: E1 (afetal (5-002)) Str 02Initial Lot? No Prev. lot 03 Next lot 04 BGS: 40-40cmInitial elev.: NW (-40)1000.50 NE (-40)1000.57 SW (-40)1000.47 SE (-40)1000.57Final elev.: NW (-40)1000.50 NE (-39)1000.56 SW (-40)1000.47 SE (-40)1000.57Depositional significance overburden / floor?Soil type clayey silt \*compact\* Munsell/Color 10 YR 4/3 BrownDrawings NA Contents ceramics, metate (grinding stone)Photo/Digital NA

## Description/Sketch (with measurements):

We hit a possible floor at 40cm BGS - very hard compact soil of the same type and color but containing fewer artifacts.

Will move on to ~~Excavation~~ Excavation Unit B and work towards finding the same floor.

Less than 1 cm of soil taken off to reveal this surface.

1 bag to the lab

Note refs 2006-30-(22)

## PAREP 2006 LOT FORM

Excavator 30 WAG Date 2006-Feb-15Op/SubOp/Lot: 02/38/05 Ex. Unit B Size (NxF) 1x1mSite: El Cafetal (S-002) Str 02Initial Lot? YES Prev. lot NA Next lot 06 BGS: 0-10 cmInitial elev.: NW (0)1000.97 NE (0)1001.15 SW (0)1000.97 SE (0)1001.16Final elev.: NW (-20)1000.77 NE (-20)1000.95 SW (-20)1000.77 SE -15 (rock)  
1001.00Depositional significance overburden / humus  
Soil type clayey silt Munsell/Color 10 YR 4/3 Brown (wet)Drawings NA Contents ceramic, chertPhoto/Digital NA

## Description/Sketch (with measurements):

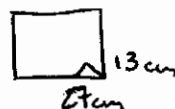
Top soil with many roots.

One large root/trunk in NE corner.

Soil is moist, crumbles easily, and easy to dig through.

One small piece of ceramic and one piece of chert

1 bag to the lab

There is a large rock in the SE corner that  
throws the elevation off 5cm.Note refs 2006-30 (25)

## PAREP 2006 LOT FORM

Excavator 30 WAG Date 2006 Feb 16Op/SubOp/Lot: 02/38/06 Ex. Unit B Size (NxL) 1x1mSite: E1 Cafetal (S-002) Str 02Initial Lot? NO Prev. lot 05 Next lot 07 BGS: 20-30cmInitial elev.: NW (-20)1000.77 NE (-20)1000.95 SW (-20)1000.77 SE -15 (rock) <sup>1001.00</sup>Final elev.: NW (-30)1000.67 NE (-30)1000.85 SW (-30)1000.67 SE -30 (-5 w/rock) <sup>1001.00</sup>Depositional significance Overburden/humusSoil type Clayey silt Munsell/Color 10 YR 4/3 BrownDrawings NA Contents ceramics, chert, obsidian,Photo/Digital NA bajarque, lithic

## Description/Sketch (with measurements):

Many small pieces of ceramics

One large piece of ceramic found with a large piece of chert around 30cm BGS in NW corner.

A few pieces of chert and unshaped obsidian.

Small pieces of bajarque - one black and crumbles easily  
One rock with a flat edge.

One larger piece.

1 bag to the lab.

Note refs 2006-30-(24)

## PAREP 2006 LOT FORM

Excavator 30 WAGDate 2006 - Feb 16Op/SubOp/Lot: 02/38/07Ex. Unit BSize (NxEx) 1x1mSite: E1 Cafetal (S-002)Str 02Initial Lot? NO Prev. lot 06 Next lot \_\_\_\_\_ BGS: 30 - 40 cmInitial elev.: NW (-30) 1000.67 NE (-30) 1000.85 SW (-30) 1000.67 SE -30 (-15 w/rock) <sup>1001.00</sup>Final elev.: NW (-40) 1000.57 NE (-40) 1000.75 SW (-40) 1000.57 SE -40 (rock) <sup>1001.00</sup>Depositional significance overburden/~~horizon~~ / floor?Soil type clayey silt Munsell/Color 10 YR 4/3 BrownDrawings NAContents ceramics, chert, obsidian,  
toba, baja regue, mafatePhoto/Digital NA

## Description/Sketch (with measurements):

Many pieces of ceramic - some lying flat - good indication of floor level.

One large piece of rim (10cm)

A lot of obsidian at this level - one fairly large - and two shaped into blades  $\Delta$ .

Small pieces of toba and baja regue

1 bag to the lab.

\* The floor was at 40cm BGS in this EU as well so we are moving on to EUC.

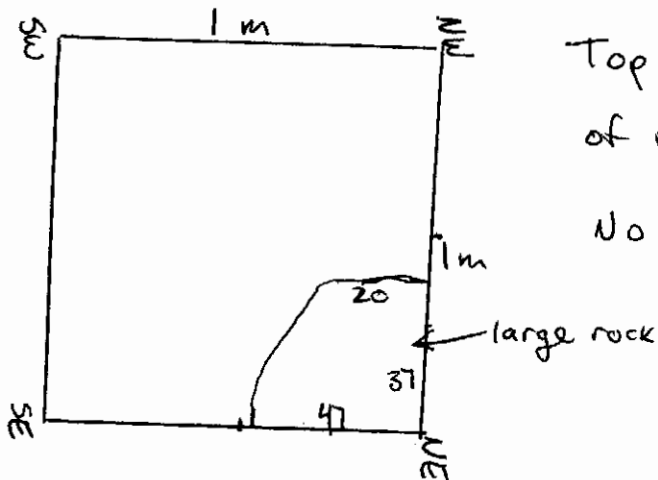
Note refs 2006-30-(27)



## PAREP 2006 LOT FORM

Excavator 30 WAG Date 2006-Feb-16Op/SubOp/Lot: 02/38/08Ex. Unit CSize (NxEx) 1x1 mSite: El Cafetal (S-002)Str 02Initial Lot? YES Prev. lot NA Next lot 09 BGS: 0-20 cmInitial elev.: NW (0) 1001.15 NE (0) 1001.37 SW (0) 1001.16 SE (0) 1001.45Final elev.: NW (-20) 1000.95 NE (-7 (rock) (-20)) 1001.30 SW (-20) 1000.96 SE (-20) 1001.25Depositional significance overburden / humusSoil type clayey siltMunsell/Color 10 YR 4/3 Brown (wet)Drawings NAContents no artifactsPhoto/Digital NA

## Description/Sketch (with measurements):

Top soil - moist, dark, full  
of roots and insects.

No bags to the lab

Note refs 2006-30-(28)

## PAREP 2006 LOT FORM

Excavator 30 WAG Date 2006-Feb-16Op/SubOp/Lot: 02/38/09 Ex. Unit C Size (NxE) 1x1mSite: E1 Cafetal (S-002) Str 02Initial Lot? NO Prev. lot 08 Next lot 10 BGS: 20-30 cmInitial elev.: NW (-20) 1000.95 NE 1001.30 SW (-20) 1000.96 SE (-20) 1001.25Final elev.: NW (-30) 1000.85 NE 1001.30 SW (-30) 1000.96 SE (-30) 1001.15Depositional significance overburden/humusSoil type clayey silt Munsell/Color 10 YR 4/3 BrownDrawings NA Contents ~~ceramics~~ ceramics, chert,Photo/Digital NA obsidian, bajareque

## Description/Sketch (with measurements):

Many large rocks in this lot, especially around the eastern side of the pit.

Not as many artifacts at this level - compared to other EU's at same level

1 bag to the lab

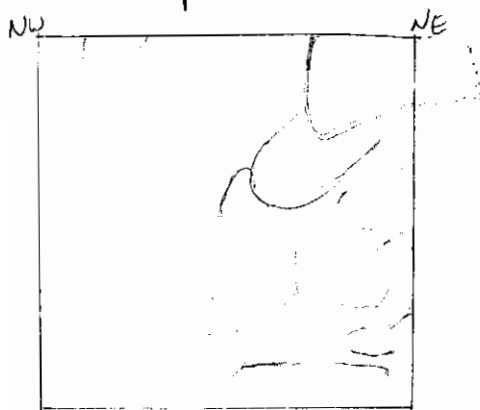
Note refs 2006-30-(28,29)

## PAREP 2006 LOT FORM

Excavator 30 WAG Date 2006-Feb-20Op/SubOp/Lot: 02/38/10 Ex. Unit C Size (NxE) 1x1mSite: El Cafetal (3002) Str 02Initial Lot? no Prev. lot 09 Next lot \_\_\_\_\_ BGS: 30-40cmInitial elev.: NW (-30) 1000.95 NE -30 (-7 w/rock) 1001.30 SW (-30) 1000.86 SE (-30) 1001.15Final elev.: NW (-40) 1000.75 NE -40 (-7 w/rock) 1001.30 SW (-40) 1000.76 SE -40 (-37 w/rock) 1000.08Depositional significance overburden / ~~horizon~~ / tumble?Soil type clayey silt Munsell/Color 10 YR 4/3 Brown - Wet todayDrawings NAContents ceramics, chert, bajareque, tobaPhoto/Digital yes

## Description/Sketch (with measurements):

Tumble in the eastern portion of the pit along with a tree stump.



Still finding artifacts but less than EU A and EU B at the same level. We hit the same floor at 40cm BGS so we will continue to EU D. 1 bag to the lab

Note refs 2000-30-(30)

## PAREP 2006 LOT FORM

Excavator 30 WAGDate 2006-Feb-20Op/SubOp/Lot: 02/38/11Ex. Unit DSize (NxEx) 1x1mSite: El Cafetal (S-002)Str 02Initial Lot? YES Prev. lot \_\_\_\_\_ Next lot 12 BGS: 0-10cmInitial elev.: NW (O) 1001.37 NE (O) 1001.62 SW (O) 1001.45 SE (O) 1001.70Final elev.: NW -10 (-7 w/100) NE (-10 w/100) SW -10 SE -10  
1001.30 1001.62 1001.35 1001.60Depositional significance overburden / humus / tumbleSoil type clayey silty clay Munsell/Color 10 YR 3/2 VDG BrownDrawings NAContents no artifacts → tumblePhoto/Digital yes

## Description/Sketch (with measurements):

Uncovering more tumble - mostly very large rocks

Many roots at this level.

Same soil as other excavation units.

No artifacts

No bags to the lab.

Note refs 2006-30-(31)

## PAREP 2006 LOT FORM

Excavator 30 WAG Date 2006-Feb-20Op/SubOp/Lot: 02/38/12 Ex. Unit D Size (NxEx) 1x1 mSite: El Cafetal (S-002) Str 02

Initial Lot? No Prev. lot 11 Next lot 13 BGS: 10-20 cm  
 Initial elev.: NW 1001.30 NE 1001.62 SW 1001.35 SE 1001.60  
 Final elev.: NW 1001.30 NE 1001.62 SW 1001.25 SE 1001.50

Depositional significance overburden/tumble  
 Soil type silty clay Munsell/Color 10 YR 3/2 V D4 Brown

Drawings NA Contents no artifacts - tumblePhoto/Digital YES

## Description/Sketch (with measurements):

Layer of tumble around 20 cm BGS - four large rocks that may have been at the same level on a higher wall, also some smaller rocks around them which will be removed in the next lot.

Still a lot of large roots here.

No change in soil

No artifacts.

No bags to the lab

Note refs 2006-30-(32)

## PAREP 2006 LOT FORM

Excavator 30WAGDate 2006-Feb-20Op/SubOp/Lot: 02/38/13Ex. Unit DSize (NxE) 1x1 mSite: E1 Cafetal (S-002)Str G2Initial Lot? NO Prev. lot 12 Next lot 19 BGS: 20-30 cmInitial elev.: NW 1001.30 NE 1001.62 SW 1001.25 SE 1001.50  
-20 (-7 w/rock) -20 (c w/rock) -20 -20Final elev.: NW 30 NE 30 (0 w/rock) SW 30 SE 30 w/rock  
1001.00 1001.62 1001.15 1001.44Depositional significance overburden/hummock/tumbleSoil type silty clayMunsell/Color 10 YR 5/5 BrownDrawings NAContents ceramicsPhoto/Digital yes

## Description/Sketch (with measurements):

Removed small rocks that were tumble and one large rock in NW corner.

Revealed a possible wall along the western edge of the pit.

Still many pieces of tumble.

Returning to EU C to find base of wall.

1 bag to the lab

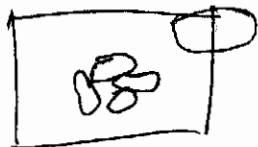
Note refs 2006-30 (32)

## PAREP 2006 LOT FORM

Excavator 30 WAGDate 2006-~~30~~ Feb-20Op/SubOp/Lot: 02/38/14Ex. Unit CSize (NxF) 1x1 mSite: El Cafetal (S-002)Str 02Initial Lot? NO Prev. lot 10 Next lot 15 BGS: 30-40 cmInitial elev.: NW (-40) 1000.75 NE (-40) 1001.39 SW (-40) 1000.76 SE (-40) 1001.08Final elev.: NW (-40) 1000.75 NE (-42) 1000.95 SW (-40) 1000.76 SE (-44) 1001.01Depositional significance over/TumbleSoil type Silty clayMunsell/Color 10 YR 3/2 VDG Brown  
4/5 BrownDrawings NAContents ceramics, chert, obsidianPhoto/Digital NA

## Description/Sketch (with measurements):

Removing tumble at the base of the wall.  
Five large rocks removed



Cleaning the surfaces to see the wall.

A few small artifacts

1 bag to the lab.

Note refs 2006-30-(33)

## PAREP 2006 LOT FORM

Excavator 30 WAG Date 2006-Feb-20Op/SubOp/Lot: 02/38/15Ex. Unit CSize (NxF) 1x1mSite: El Cafetal (S-002)Str 02Initial Lot? NO Prev. lot 14 Next lot 16 BGS: 40-50cmInitial elev.: NW (-40) 1000.75 NE (-42) 1000.95 SW (-40) 1000.76 SE (-42) 1001.01Final elev.: NW (-49) 1000.66 NE (-52) 1000.87 SW (-50) 1000.66 SE (-52) 1000.92Depositional significance overburden/human floorSoil type ~~silt clayey silt~~ silty clay Munsell/Color 10 YR 4/3 Brown <sup>3/2 UDG Brown</sup>Drawings NAContents ceramics, obsidian, chert,  
bagajera, tobaPhoto/Digital YES

## Description/Sketch (with measurements):

Many artifacts - including large and shaped pieces of obsidian and two possible ceramic feet to something.

Four large pieces of toba in the SE corner

No tumble in this lot

Soil changed to clayey silt - softer, very compact.

Will continue with a half lot near the wall tomorrow

1 bag to the lab.

Note refs 2006-30-(33-34)



## PAREP 2006 LOT FORM

Excavator 30 WAK Date 2006-Feb-21

Op/SubOp/Lot: 02/38/16 Ex. Unit C Size (NxEx) 1x1m <sup>.5 x 1 m</sup>  
Site: El Cafetal (S-002) Str 02

Initial Lot? NO Prev. lot 15 Next lot \_\_\_\_\_ BGS: 50-60 cm

Initial elev.: NW (-50) 1000.66 NE (-50) 1000.87 SW (-50) 1000.66 SE (-50) 1000.92

Final elev.: NW (60 - 60) 1000.56 NE (60) 1000.77 SW (60/60) 1000.56 SE (60) 1000.82

Depositional significance overburden/humus/floor

Soil type ~~clayey silt~~ clay Munsell/Color 10 YR 4/3 Brown

Drawings NA Contents ceramics, toba, chert

Photo/Digital YES

**Description/Sketch (with measurements):**

Half lot on the eastern portion of the pit to  
expose the base of the wall.

Some artifacts - ceramics, toba, + chert

1 bag to the lab

Note refs 2006-30-(35)

## PAREP 2006 LOT FORM

Excavator 30 WAGDate 2006-Feb-21Op/SubOp/Lot: 02/38/17Ex. Unit ESize (NxF) 1x1mSite: El Cafetal (S-002)Str 02Initial Lot? YES Prev. lot \_\_\_\_\_ Next lot 18 BGS: 0-10cmInitial elev.: NW (-10) 1001.62 NE (-10) 1002.10 SW (-10) 1001.70 SE (-10) 1002.04Final elev.: NW (-10) 1001.52 NE (-10) 1002.00 SW (-10) 1001.60 SE (-10) 1001.94Depositional significance overburden/humusSoil type silty clayMunsell/Color 10 YR 7/2 VDG BrownDrawings NAContents no artifactsPhoto/Digital NA

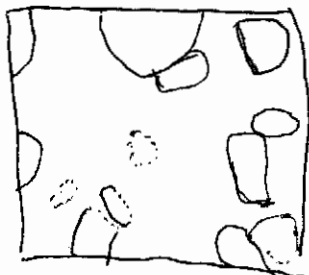
## Description/Sketch (with measurements):

Top soil with roots.

Tumble or possible structure.

No artifacts

No bags to the lab



..... → unexposed

Note refs 2006-30-(36)

## PAREP 2006 LOT FORM

Excavator 30 WAGDate 2006-Feb-21Op/SubOp/Lot: 02/38/18Ex. Unit ESize (NxEx) 1x1mSite: El Cafetal (S-002)Str 02Initial Lot? NO Prev. lot 17 Next lot 21 BGS: 10-20 cmInitial elev.: NW (-10) 1001.52 NE (-10) 1002.00 SW (-10) 1001.60 SE (-10) 1001.94Final elev.: NW -15 (w/rock) 1001.47 NE -16 (w/rock) 1002.00 SW -15 (w/rock) 1001.55 SE -18 1001.86Depositional significance over mounds / tumble / structure?Soil type silty clay Munsell/Color 10 YR 4/3 BrownDrawings NAContents ceramics

Photo/Digital \_\_\_\_\_

## Description/Sketch (with measurements):

Revealing more large rocks - possibly tumble or part of a poorly preserved wall.

No change in soil - still many roots at this level

Small pieces of ceramics

1 bag to the lab.

Note refs 2006-30-136

## PAREP 2006 LOT FORM

Excavator 30 WAGDate 2006-Feb-21Op/SubOp/Lot: 02/38/19Ex. Unit 0Size (NxEx) 1x1 mSite: El Cafetal (S-002)Str 02Initial Lot? NO Prev. lot 13 Next lot 20 BGS: 30-<sup>60</sup>~~40~~ cmInitial elev.: NW 1001.00 NE 1001.62 SW 1001.15 SE 1001.44  
-30 -30 (0.20 m) -30 -26 w/rockFinal elev.: NW 1001.00 NE 1001.47 SW 1001.05 SE 1001.44  
-30 -15 w/rock -40 w/rock -26 w/rockDepositional significance Over mounds/tumbleSoil type silty clay Munsell/Color 10 YR <sup>3/2</sup> VDG Brown  
4.5 BrownDrawings YESContents ceramic, obsidianPhoto/Digital YES

## Description/Sketch (with measurements):

Clearing away tumble to determine if there  
is a wall in this EU.  
Unable to tell at this point - maybe very poorly  
preserved.

Note refs 2006-30-(37)

## PAREP 2006 LOT FORM

Excavator 30 WABDate 2006-~~Feb~~ Feb-22Op/SubOp/Lot: 02/38/20Ex. Unit DSize (NxEx) 1x1 mSite: El Cafetal (S-002)Str 02Initial Lot? No Prev. lot 19 Next lot 22 BGS: 0-60cmInitial elev.: NW 1001.00 NE 1001.47 SW 1001.05 SE 1001.44Final elev.: NW -40 NE -15 SW -40 SE -26  
1000.90 1001.47 1001.05 1001.44Depositional significance over ~~homos~~ / tumbleSoil type silty clay Munsell/Color 10 YR 4/3 <sup>3/4</sup> VDG BrownDrawings YESContents ceramicsPhoto/Digital YES

## Description/Sketch (with measurements):

Removing rocks from FLEETLOOPS wall to sketch them.

Found ceramics - good indication that this is only  
tumble and not really a wall

1 bag to the lab

Notes 2006-30-39

## PAREP 2006 LOT FORM

Excavator 30-WAG Date 2006-<sup>Feb</sup>~~20~~-23Op/SubOp/Lot: 02/38/21 Ex. Unit E Size (NxEx) 1x1mSite: El Cafetal (S-002) Str 02Initial Lot? NO Prev. lot 18 Next lot 26 BGS: 0-50cmInitial elev.: NW (-15) 1001.47 NE (-10) 1002.00 SW (-15) 1001.55 SE (-18) 1001.86Final elev.: NW (-15) 1001.47 NE (-10) 1002.00 SW (-15) 1001.55 SE (-18) 1001.86Depositional significance over ~~hollows~~ / tumbleSoil type silty clay Munsell/Color 10 YR <sup>3/2</sup> vDG Brown  
4/3 BrownDrawings NA Contents ceramics, baja reguePhoto/Digital NA

## Description/Sketch (with measurements):

No change in elevations because we removed tumble rocks in the middle down to 50cm BGS but did not remove those around the ~~edge~~ corners.

No clear wall.

Still finding ceramics

1 bag to the lab

Note refs 2006-30-39

## PAREP 2006 LOT FORM

Excavator 30 WAG Date 2006-Feb-23Op/SubOp/Lot: 02/38/22 Ex. Unit D Size (NxEx) 1x1mSite: El Cafetal (5-002) Str 02Initial Lot? no Prev. lot 19 Next lot 28 BGS: 20-70cm  
Initial elev.: NW 1000.90 NE 1001.47 SW 1001.05 SE 1001.44Final elev.: NW -65 (-24 w/rock) NE -20 SW -70 SE -29 (rock)  
1000.55 1001.42 1000.75 1001.41Depositional significance over ~~loam~~ silt/claySoil type silty clay Munsell/Color 10 YR 3/2 VP6z BrownDrawings NA Contents ceramics, bajareque, toba,Photo/Digital YES obsidian, chert, caracol, lithic

Description/Sketch (with measurements):

Note refs \_\_\_\_\_

## PAREP 2006 LOT FORM

Excavator 30 WA6 Date 2006-Feb-23Op/SubOp/Lot: 02/38/23 Ex. Unit F Size (NxEx) 1x1mSite: El Cafetal (S-002) Str 02Initial Lot? YES Prev. lot \_\_\_\_\_ Next lot 24 BGS: 8-10 cmInitial elev.: NW (0) 1002.10 NE (0) 1002.39 SW (0) 1002.04 SE (0) 1002.36Final elev.: NW -3 NE -10 SW -10 SE -10  
1002.07 1002.29 1001.94 1002.26Depositional significance thinly/overburden/humus  
Soil type sandy clayey silt Munsell/Color 10 YR 3/2 Udg Brown  
4/5 BrownDrawings NA Contents ceramicsPhoto/Digital NA

## Description/Sketch (with measurements):

Removing top soil to see the relationships  
of rocks in EU E better.

1 bag to the lab

Note refs 2006-30-42



## PAREP 2006 LOT FORM

Excavator 30 WAG Date 2006-Feb-23Op/SubOp/Lot: 02/38/24 Ex. Unit F Size (NxEx) 1x1 mSite: El Cafetal (S-002) Str 02Initial Lot? No Prev. lot 23 Next lot 25 BGS: 10-20cmInitial elev.: NW 1002.07 NE 1002.29 SW 1001.94 SE 1002.26Final elev.: NW 1002.07 NE 1002.19 SW 1001.84 SE 1002.16Depositional significance top soil / overburden / humusSoil type sandy-clayey silt Munsell/Color 10 YR 4/5 BrownDrawings NA Contents ceramicsPhoto/Digital NA

Description/Sketch (with measurements):

Note refs 2006 - 30 - 42

## PAREP 2006 LOT FORM

Excavator 30 WAG Date 2006-Feb-23Op/SubOp/Lot: 02/38/25 Ex. Unit F Size (NxEx) 1x1 mSite: El Cafetal (S-002) Str 02Initial Lot? no Prev. lot 24 Next lot \_\_\_\_\_ BGS: 20-30cmInitial elev.: NW 1002.07 NE 1002.19 SW 1001.84 SE 1002.16Final elev.: NW 1002.07 NE 1002.19 SW 1001.84 SE 1002.16  
(-3) (-20) (-20) (-20)Depositional significance humus/overburdenSoil type sandy-clayey silt Munsell/Color 10 YR 4/3 Brown <sup>3/2 VDG</sup>Drawings NA Contents CeramicsPhoto/Digital NA

Description/Sketch (with measurements):

Note refs 2006-30-43

## PAREP 2006 LOT FORM

Excavator 30 WAG Date 2006-Feb-23Op/SubOp/Lot: 02/38/26 Ex. Unit E Size (NxEx) 1x1 mSite: El Cafetal (S-002) Str 02Initial Lot? NO Prev. lot 21 Next lot 27 BGS: 0-50cmInitial elev.: NW (-19) 1001.47 NE (-19) 1002.00 SW (-19) 1001.55 SE (-19) 1001.86Final elev.: NW -21 NE -10 SW -15 SE -18  
1001.41 1002.00 1001.55 1001.86Depositional significance homos/ overburden/ tumblerSoil type sandy-clay es silt Munsell/Color 3/2 VDG 10 ye 4/3 BrownDrawings NA Contents ceramics, chertPhoto/Digital NA

Description/Sketch (with measurements):

Note refs 2006-30-43

## PAREP 2006 LOT FORM

Excavator SO WAGDate 2006-Feb-24Op/SubOp/Lot: 02/38/27Ex. Unit ESize (NxE) 1x1mSite: El Cafetal (S-002)Str 02Initial Lot? NO Prev. lot 26 Next lot \_\_\_\_\_ BGS: 30-50cmInitial elev.: NW (-1) 1001.41 NE (-1) 1002.00 SW (-1) 1001.55 SE (-1) 1001.86Final elev.: NW (-1) 1001.41 NE (-1) 1002.00 SW (-1) 1001.55 SE (-1) 1001.86Depositional significance overburden/humus/tumbleSoil type silty clay Munsell/Color 10 YR 4/3 BrownDrawings NAContents obsidian, ceramicsPhoto/Digital NA

## Description/Sketch (with measurements):

Removed tumble.

starting to see a possible wall along eastern edge  
of EU G, best preserved in NE corner.

We are now missing the second terrace because this  
appears to be high enough to be the third.

1 bag to the lab

Note refs 2006-30-44

## PAREP 2006 LOT FORM

Excavator 30 WABDate 2006-~~30~~ Feb-24Op/SubOp/Lot: 02/38/28Ex. Unit DSize (NxEx) 1x1mSite: E1 Capital (S-002)Str 02

Initial Lot? no Prev. lot 22 Next lot 29 BGS: 70-80cm  
Initial elev.: NW 1000.55 NE 1001.42 SW 1000.75 SE 1001.41  
Final elev.: NW 1000.44 NE 1001.42 SW 1000.31 SE 1001.41

Depositional significance overburden/floor/sedimentSoil type clay Munsell/Color 10 YR 4/3 BrownDrawings NAContents obsidian, tephra, ceramicPhoto/Digital NA

## Description/Sketch (with measurements):

Continued 10 cm down in front of H80 wall  
because of one tumbled rock that was slanted  
and going below the soil in our base level

The soil changed here to a light colored clay  
1 bag to the lab

Note refs 2006-30-<sup>45</sup>~~47~~

## PAREP 2006 LOT FORM

Excavator 30 WAGDate 2006-Feb-27Op/SubOp/Lot: 02/38/29 Ex. Unit D Size (NxEx) 1x1mSite: El Cafetal (S-002) Str 02Initial Lot? NO Prev. lot 28 Next lot \_\_\_\_\_ BGS: 80-90cmInitial elev.: NW 1000.44 NE 1001.42 SW 1000.75 SE 1001.41  
-76 (-24 (rock)) -15 -84 -26Final elev.: NW 1000.30 NE 1001.42 SW 1000.65 SE 1001.42  
-95 -15 -94 -26Depositional significance sediment/sterileSoil type clay Munsell/Color 10 YR 4/3 BrownDrawings NA Contents no artifactsPhoto/Digital NA

## Description/Sketch (with measurements):

Reached sterile soil here - clay.

Passed the base of the wall in the last lot

No artifacts

No bags to the lab

Note refs 2006-30-<sup>45-46</sup>(44-45)

## PAREP 2006 LOT FORM

Excavator 30 WAG Date 2006-Feb-27Op/SubOp/Lot: 02/38/30 Ex. Unit G Size (NxF) 1x1mSite: E1 Cafetal (S-002) Str 02Initial Lot? YES Prev. lot \_\_\_\_\_ Next lot \_\_\_\_\_ BGS: 0-25 cmInitial elev.: NW (S) 1002.39 NE (C) 1002.61 SW (S) 1002.36 SE (C) 1002.65Final elev.: NW (C) 1002.39 NE (-1C) 1002.51 SW (-16) 1002.20 SE (C) 1002.65Depositional significance overburden/humus/top soilSoil type sandy clayey silt Munsell/Color 10 YR 3/2 VDR Brown

Drawings \_\_\_\_\_ Contents \_\_\_\_\_

Photo/Digital \_\_\_\_\_

## Description/Sketch (with measurements):

Removing top soil to reveal the tumble that  
is already visible.

Large roots from the tree nearby appear to have  
moved a lot of the rocks

No bags to the lab.

Note refs 2006-30-<sup>46</sup>48

Op/SubOp/Lot: 02/38/31Ex. Unit LSize (NxEx) 1x1mSite: E1 Cafetal (S-002)Str 02Initial Lot? YES Prev. lot \_\_\_\_\_ Next lot \_\_\_\_\_ BGS: 0-25 cmInitial elev.: NW (0) 1001.89 NE (0) 1001.97 SW (0) 1001.50 SE (0) 1001.56Final elev.: NW (0) 1001.89 NE (17) 1001.90 SW (0) 1001.50 SE (0) 1001.40Depositional significance overburden/humus/ top soilSoil type Sandy clayey silt Munsell/Color 10 YR 5/2 VDG Brown

Drawings \_\_\_\_\_

Contents ceramics, biogregue

Photo/Digital \_\_\_\_\_

## Description/Sketch (with measurements):

This is the end of the trench on the eastern side - we are starting closer to the mound here because there is a bean field, the wall should be steeper, and there was a lot of tumble on the other side.

A few small pieces of ceramics, and one piece of biogregue  
1 bag to the lab.

Note refs

2006-30-<sup>47</sup>~~46~~



## PAREP 2006 LOT FORM

Excavator 30 WAG Date 2006-Feb-27Op/SubOp/Lot: 02/38/32 Ex. Unit K Size (NxEx) 1x1mSite: E1 (afeta) (S-002) Str 02Initial Lot? YES Prev. lot \_\_\_\_\_ Next lot \_\_\_\_\_ BGS: 0-25 cmInitial elev.: NW (2) 1002.36 NE (0) 1001.89 SW (0) 1002.42 SE (0) 1001.97Final elev.: NW (0) 1002.26 NE (-5) 1001.74 SW (0) 1002.42 SE (0) 1001.97Depositional significance humus/overburden / top soilSoil type sandy clayey silt Munsell/Color 10 YR 3/2 VDG BrownsDrawings \_\_\_\_\_ Contents Ceramics

Photo/Digital \_\_\_\_\_

## Description/Sketch (with measurements):

Removing top soil to reveal tumble.

Few roots or insects

Many rocks - none that appear to be in place.

1 bag to the lab

Note refs 2006-30-47

## PAREP 2006 LOT FORM

Excavator WAG 30 Date 2006-Fly-27

Op/SubOp/Lot: 02/38/33 Ex. Unit H Size (NxP) 1x1m  
Site: El Cafetal (5-002) Str 02

Initial Lot? YES Prev. lot \_\_\_\_\_ Next lot \_\_\_\_\_ BGS: 0-25 cm

Initial elev.: NW (0) 1002.61 NE (0) 1002.84 SW (0) 1002.65 SE (0) 1002.76

Final elev.: NW (25) 1002.36 NE (-) 1002.84 SW (17) 1002.48 SE (30) 1002.46

Depositional significance humus/ overburden / top soil

Soil type sandy clayey silt Munsell/Color 10 YR 3/2 VDG Brown

Drawings NA Contents none

Photo/Digital \_\_\_\_\_

## Description/Sketch (with measurements):

Removing top soil to reveal ~~the~~ tumbler.

Very close to a large tree that has large roots extending into our EU - so it is taking a little longer than usual.

Not as much tumbler visible here as in the lower lots.

No bags to the lab

Note refs 2006-30-48

## PAREP 2006 LOT FORM

Excavator 30 WAGDate 2006-Feb-27Op/SubOp/Lot: 02/38/34Ex. Unit LSize (NxEx) 1x1 mSite: El Cafetal (S-002)Str 02Initial Lot? NO Prev. lot 31 Next lot \_\_\_\_\_ BGS: 25-75 cmInitial elev.: NW (1001.89) NE (1001.80) SW (1001.50) SE (1001.40)Final elev.: NW (1001.52) NE (1001.42) SW (1001.10) SE (1000.90)

Reference corner: \_\_\_\_\_ N \_\_\_\_\_ E \_\_\_\_\_

Depositional significance remains / overburden/tumbleSoil type Sandy clayey silt Munsell/Color 10 YR 3/2 VDG BrownDrawings NAContents ceramics, bajareque, chert,  
obsidian, lithic

Photo/Digital \_\_\_\_\_

## Description/Sketch (with measurements):

Removed most of the tumble on the eastern side of the pit - looking for the floor but did not find it, we left the other side for now but nothing appears to line up well.

Many pieces of bajareque - some large - must have been a building here.

2 bag to the lab

Note refs 2006-30-48

## PAREP 2006 LOT FORM

Excavator 30 WAGDate 2006-Feb-28Op/SubOp/Lot: 02/38/35Ex. Unit FSize (NxE) 1x1mSite: E1 (catal 5-002)Str 02Initial Lot? no Prev. lot 25 Next lot \_\_\_\_\_ BGS: 25-75cmInitial elev.: NW 1002.07 NE 1002.19 SW 1001.84 SE 1002.16Final elev.: NW 1001.95 NE 1001.89 SW 1001.84 SE 1001.71  
(-15) (-5) (-20) (-65)Reference corner: (115) N (150) E (120)Depositional significance humus / overburdenSoil type sandy clayey silt Munsell/Color 10 YR 3/2 VDG BrDrawings NAContents ceramics, ~~pottery~~, chert,  
obsidian, lithic, tools

Photo/Digital \_\_\_\_\_

## Description/Sketch (with measurements):

While removing tumble we found some rocks that appear to be level and in line - but there are two different sets of flat rocks at different BGS.

One large piece of rim - many small ceramics.

Large pieces of chert.

Lithic is pink/orange - maybe chert?

1 bag to the lab

Note refs 2006-30-(49,50)

## PAREP 2006 LOT FORM

Excavator 30 WAG Date 2006-Mar-1Op/SubOp/Lot: 02/38/36 Ex. Unit 8 I Size (NxEx) 1x1 mSite: El Cafetal (5-002) Str 02Initial Lot? YES Prev. lot \_\_\_\_\_ Next lot \_\_\_\_\_ BGS: 0-30cmInitial elev.: NW (0) 1002.84 NE (0) 1002.72 SW (0) 1002.76 SE (0) 1002.72Final elev.: NW (-10) 1002.74 NE (-10) 1002.62 SW (-2<sup>1</sup>) 1002.49 SE (-2<sup>1</sup>) 1002.45

Reference corner: \_\_\_\_\_ N \_\_\_\_\_ E \_\_\_\_\_

Depositional significance humus / overburdenSoil type sandy-clayey silt Munsell/Color 10YR 5/2 vdg BrDrawings NA Contents ~~none~~ ceramics, bajareque

Photo/Digital \_\_\_\_\_

## Description/Sketch (with measurements):

Removing top soil to reveal tumble.

Removed two very large roots.

~~No artifacts~~~~No bags to the lab.~~we cleared around the rocks and found a few  
small pieces of ceramic, one bajareque.

1 bag to the lab

Note refs 2006-30-52

## PAREP 2006 LOT FORM

Excavator 30 WAGDate 2006-Mar-1Op/SubOp/Lot: 02/38/37 Ex. Unit JD Size (NxEx) 1x1 mSite: El Cafetal (S-002) Str 02Initial Lot? YES Prev. lot \_\_\_\_\_ Next lot \_\_\_\_\_ BGS: 0-15 cmInitial elev.: NW (0) 1002.72 NE (0) 1002.36 SW (0) 1002.72 SE (0) 1002.42Final elev.: NW (-10) 1002.62 NE (-10) 1002.22 SW (-12) 1002.60 SE (-10) 1002.32

Reference corner: \_\_\_\_\_ N \_\_\_\_\_ E \_\_\_\_\_

Depositional significance humus / overburdenSoil type sandy-clayey silt Munsell/Color 10 YR 3/4 VDG BrownDrawings NA Contents ceramics

Photo/Digital \_\_\_\_\_

## Description/Sketch (with measurements):

Removing top soil to reveal tumble  
Removed three rocks above the ground surface.  
Tumble was very close to the surface here.  
All small ceramics

I bag to the lab

Note refs 2006-30-52

## PAREP 2006 LOT FORM

Excavator 30 WAGDate 2006-Mar-7Op/SubOp/Lot: 02/38/38 Ex. Unit L Size (NxEx) 1x1mSite: E1 Cafetal (S-002) Str 02Initial Lot? NO Prev. lot \_\_\_\_\_ Next lot \_\_\_\_\_ BGS: 75-90 cmInitial elev.: NW (-37) 1001.52 NE (-55) 1001.42 SW (-40) 1001.10 SE (-66) 1000.90Final elev.: NW (-91) 1000.98 NE (-56) 1001.41 SW (-88) 1000.62 SE (-67) 1000.89

Reference corner: \_\_\_\_\_ N \_\_\_\_\_ E \_\_\_\_\_

Depositional significance humus / tumbleSoil type silt/clay <sup>sandy-clayey</sup> silt Munsell/Color 10 YR 7/2 VDS BrDrawings NAContents bajareque, ceramics, obsidian, chertPhoto/Digital NA

## Description/Sketch (with measurements):

Removed all of the tumble from this lot - which was 95% of the material here.

Large pieces of bajareque - and many small ones - confirming that there was a building on top of this structure that collapsed along with the ~~large~~ steep back wall.

2 bags to the lab

Note refs 2006-30-53

## PAREP 2006 LOT FORM

Excavator 30 WAG Date 2006-Mar-2Op/SubOp/Lot: 02/38/39 Ex. Unit K Size (NxEx) 1x1 mSite: E1 Cafetal (S-002) Str 02Initial Lot? No Prev. lot \_\_\_\_\_ Next lot \_\_\_\_\_ BGS: 25-80 cmInitial elev.: NW (-18) 1002.76 NE (-15) 1001.74 SW (-6) 1002.42 SE (-6) 1001.97Final elev.: NW (-20) 1002.16 NE (-20) 1001.19 SW (-10) 1002.32 SE (-20) 1001.17

Reference corner: \_\_\_\_\_ N \_\_\_\_\_ E \_\_\_\_\_

Depositional significance humus / tumbleSoil type silt sandy clayey silt Munsell/Color 10 YR 3/2 UDG Br.Drawings NA Contents ceramics, obsidian, caracol

Photo/Digital \_\_\_\_\_

## Description/Sketch (with measurements):

Opened this lot before finishing EUL because  
the tumble here was about to fall.

Removed most of the tumble on the eastern  
side.

No visible wall or alignment of rocks even  
though we predicted it would be in this lot.

1 bag to the lab

Note refs 2006-30-54



## PAREP 2006 LOT FORM

Excavator 30 WAG Date 2006-Mar-2Op/SubOp/Lot: 02/38/40 Ex. Unit F Size (NxEx) 1x1 mSite: El Cafetal (S-002) Str 02Initial Lot? no Prev. lot \_\_\_\_\_ Next lot \_\_\_\_\_ BGS: 50-80 cmInitial elev.: NW 1001.95 NE 1001.89 SW 1001.84 SE 1001.71Final elev.: NW 1001.73 NE 1001.79 SW 1001.77 SE 1001.71  
(-37) (-60) (-27) (-65)

Reference corner: \_\_\_\_\_ N \_\_\_\_\_ E \_\_\_\_\_

Depositional significance humus / fillSoil type ~~silty~~ sandy-clayey Munsell/Color 10 YR 3/2 VDG Br  
siltDrawings \_\_\_\_\_ Contents ceramics, bajareque

Photo/Digital \_\_\_\_\_

## Description/Sketch (with measurements):

Returned to this EU to removed rocks on top of the possible wall along the western side. Instead we found more layers of flat rock that matched up with other parts of the fill.

1 bag to the lab.

Note refs 2006-30-54

## PAREP 2006 LOT FORM

Excavator 30 WAGDate 2006-Mar-2Op/SubOp/Lot: 02/38/41 Ex. Unit G Size (NxEx) 1x1mSite: E1 Cafetal (S-002) Str 02Initial Lot? 110 Prev. lot 30 Next lot 52 BGS: 0-30cmInitial elev.: NW (0) 1002.39 NE (10) 1002.51 SW (10) 1002.20 SE (0) 1002.65Final elev.: NW (0) 1002.39 NE (10) 1002.51 SW (10) 1002.20 SE (0) 1002.65

Reference corner: \_\_\_\_\_ N \_\_\_\_\_ E \_\_\_\_\_

Depositional significance remains / overburden/tumbleSoil type silt sandy clayey Munsell/Color 10 YR 3/2 VDG Br  
siltDrawings NA Contents chart

Photo/Digital \_\_\_\_\_

## Description/Sketch (with measurements):

Removed a few large rocks that were resting on top of a level surface of rocks around 20cm BGS.

This appears to be the same type of surface found in EU F but at least 20 cm higher.

We will follow this level over the top of the structure if possible.

Also want to check out the western portion of this pit where the edge of the terrace should be

1 bag to the lab

Note refs 7000-30-56

## PAREP 2006 LOT FORM

Excavator 30 WAGDate 2006-<sup>Mar-2</sup>~~Feb~~Op/SubOp/Lot: 02/38/42 Ex. Unit K Size (NxEx) 1x1 mSite: El Cafetal (S-002) Str 02Initial Lot? NO Prev. lot 39 Next lot 42 BGS: 80-130 cmInitial elev.: NW (20) 1002.16 NE (70) 1001.19 SW (6) 1002.32 SE (80) 1001.17Final elev.: NW (20) 1002.16 NE (70) 1000.95 SW 0 1002.32 SE (40) 1000.97

Reference corner: \_\_\_\_\_ N \_\_\_\_\_ E \_\_\_\_\_

Depositional significance over / tumbleSoil type S. c. silt Munsell/Color 3/2 vds br

Drawings \_\_\_\_\_ Contents \_\_\_\_\_

Photo/Digital \_\_\_\_\_

## Description/Sketch (with measurements):

Removed tumble to reveal a wall along the EU J and EU K boundary. It is fairly well preserved nine courses high and three courses thick. The base of the wall is at 130cm BGS-where the floor changes to bajareque/clay. The soil in the tumble was very distinctive - small ~~water~~ balls of dirt that did not grip the rocks. This wall is called ~~the~~ Zucaritos. 2 bags to the lab.

Note refs 2006-30-(56-57,60)

## PAREP 2006 LOT FORM

Excavator 30 WAG Date 2006-Mar-2Op/SubOp/Lot: 02/38/43 Ex. Unit H Size (NxEx) 1x1mSite: E1 Cafetal (S-002) Str 02

Initial Lot? \_\_\_\_\_ Prev. lot \_\_\_\_\_ Next lot \_\_\_\_\_ BGS: \_\_\_\_\_

Initial elev.: NW (-25) 1002.61 NE (0) 1002.84 SW (-17) 1002.48 SE (-30) 1002.46Final elev.: NW (-30) 1002.56 NE (0) 1002.24 SW (-17) 1002.48 SE (-60) 1002.16Depositional significance over/tumbleSoil type S.C. Silt. Munsell/Color 3/2 v Dca Br

Drawings \_\_\_\_\_ Contents \_\_\_\_\_

Photo/Digital \_\_\_\_\_

## Description/Sketch (with measurements):

Removed tumble to the level of the floor which is visible here too. It is a little uneven but appears to be part of the same floor. A few small pieces of ceramics and obsidian and a small rock similar to chert but different colors. We will continue following this floor level into the next unit.

1 bag to the lab

Note refs 2006-30-58

## PAREP 2006 LOT FORM

Excavator ZO WAGDate 2006-Mar-3Op/SubOp/Lot: 02/38/44 Ex. Unit I Size (NxEx) 1x14Site: E1 (cave) (S-002) Str 02Initial Lot? NA Prev. lot \_\_\_\_\_ Next lot \_\_\_\_\_ BGS: 25-60cmInitial elev.: NW (-10) 1002.74 NE (-10) 1002.62 SW (-27) 1002.49 SE (-77) 1002.45Final elev.: NW (-60) 1002.24 NE (-55) 1002.17 SW (-60) 1002.16 SE (-50) 1002.22

Reference corner: \_\_\_\_\_ N \_\_\_\_\_ E \_\_\_\_\_

Depositional significance overburden / tumbleSoil type sandy-clayey silt Munsell/Color 10 YR 3/2 VDO Br

Drawings \_\_\_\_\_ Contents \_\_\_\_\_

Photo/Digital \_\_\_\_\_

## Description/Sketch (with measurements):

Clearing away tumble to reach the floor level in this EU.

It seems to be at a lower level here - and not as well preserved.

Removed some rocks from the side walls.

1 bag to the lab

Note refs 2006-30-61

## PAREP 2006 LOT FORM

Excavator 30 WAGDate 2008-03-13Op/SubOp/Lot: 02/38/45 Ex. Unit J Size (NxEx) 1x1mSite: E1 Cafetal (S-002) Str 02Initial Lot? NO Prev. lot \_\_\_\_\_ Next lot 53 BGS: 15-55 cmInitial elev.: NW (-10) 1002.62 NE (-14) 1002.22 SW (-12) 1002.60 SE (-0) 1002.32Final elev.: NW (-55) 1002.17 NE (-26) 1002.10 SW (-58) 1002.22 SE (-44) 1000.88

Reference corner: \_\_\_\_\_ N \_\_\_\_\_ E \_\_\_\_\_

Depositional significance over / tumbleSoil type S. c. silt Munsell/Color 10 YR 3/2 UDG Br

Drawings \_\_\_\_\_ Contents \_\_\_\_\_

Photo/Digital \_\_\_\_\_

## Description/Sketch (with measurements):

We opened this unit to find the floor level here and also to keep the tumble from falling into EU K.

Removed a few very large rocks - maybe part of the fill.

Found a line of rocks that could form the back of the Zucaritas wall making it three courses thick.

The floor is uneven here - poorly preserved or did we go through it?

1 bag to the lab

Note refs 2006-30-601

## PAREP 2006 LOT FORM

Excavator 30 WAG Date 2006-Mar-3Op/SubOp/Lot: 02/38/46 Ex. Unit H Size (NxEx) 1x1mSite: El Cafetal (S-002) Str 02Initial Lot? NO Prev. lot \_\_\_\_\_ Next lot \_\_\_\_\_ BGS: 30-teoch.Initial elev.: NW (3) 1002.56 NE (4) 1002.84 SW (17) 1002.48 SE (6) 1002.16Final elev.: NW (3) 1002.56 NE (4) 1002.84 SW (15) 1002.30 SE (6) 1002.16

Reference corner: \_\_\_\_\_ N \_\_\_\_\_ E \_\_\_\_\_

Depositional significance over / tumbleSoil type s.c. silt Munsell/Color 10 YR 5/2 VDG Brown

Drawings \_\_\_\_\_ Contents \_\_\_\_\_

Photo/Digital \_\_\_\_\_

## Description/Sketch (with measurements):

Removed the large rocks from the south wall of the pit in hopes of finding a flatter floor.

There seem to be two different levels of the same floor - could have been evened out by other materials, lost rocks here, or one level could be fill.

1 bag to the lab.

Note refs 2006-30-62

Op/SubOp/Lot: 02/38/47 Ex. Unit K Size (NxEx) 1x1mSite: El Cafetal (S-002) Str 02Initial Lot? NO Prev. lot 42 Next lot \_\_\_\_\_ BGS: 100-145 cmInitial elev.: NW (-26) 1002.10 NE (94) 1000.95 SW (6) 1002.32 SE (100) 1000.97Final elev.: NW (-138) 1000.98 NE (-94) 1000.95 SW (-144) 1000.88 SE (100) 1000.97

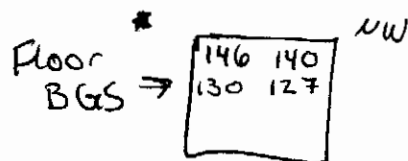
Reference corner: \_\_\_\_\_ N \_\_\_\_\_ E \_\_\_\_\_

Depositional significance floor / overSoil type clay Munsell/Color (10) YR 4/3 BrownDrawings NAContents ceramics-89, obsidian-12Photo/Digital YES~~chart-3, bajareque-24,~~~~carbon-1, caracol-1~~

## Description/Sketch (with measurements):

This lot was directly above the bajareque floor.

143 cm BGS - floor begins.



Burnt bajareque - generally flat

Too close to the Zucaritas wall to have fallen from above it - continues up to the base of the wall.

Took carbon samples here because they are in good context.

Note refs 2006-30-62



## PAREP 2006 LOT FORM

Excavator 30 WAG Date 2006-Mar-6Op/SubOp/Lot: 02/38/48 Ex. Unit K Size (NxEx) 1x1mSite: El Cafetal (S-002) Str 02Initial Lot? NO Prev. lot \_\_\_\_\_ Next lot \_\_\_\_\_ BGS: \_\_\_\_\_Initial elev.: NW (-138) 1000.98 NE (94) 1000.95 SW (-144) 1000.88 SE (-100) 1000.97Final elev.: NW (-146) 1000.90 NE (94) 1000.95 SW (-144) 1000.88 SE (-100) 1000.97

Reference corner: \_\_\_\_\_ N \_\_\_\_\_ E \_\_\_\_\_

Depositional significance over / floorSoil type clay Munsell/Color 10 YR 7/3 BrownDrawings \_\_\_\_\_ Contents ceramics - 10Photo/Digital \_\_\_\_\_ bagareque - 2carbon - 3

## Description/Sketch (with measurements):

Digging at the base of Zucaritas wall to see if it or honeycombs wall was there first. The base of Zucaritas is above the floor level so either the floor was there first or they were built at the same time.

1 bag to the lab

Note refs 2006-30-64

## PAREP 2006 LOT FORM

Excavator 30 WAG Date 2006-Mar-6Op/SubOp/Lot: 02/38/40 Ex. Unit I Size (NxEx) 1x1mSite: E1 (afeta) (S-002) Str 02Initial Lot? NO Prev. lot \_\_\_\_\_ Next lot \_\_\_\_\_ BGS: 40-60cmInitial elev.: NW (-60) 1002.24 NE (-55) 1002.17 SW (-60) 1002.16 SE (-50) 1002.22Final elev.: NW (-60) 1002.24 NE (-55) 1002.17 SW (-60) 1002.16 SE (-60) 1002.11

Reference corner: \_\_\_\_\_ N \_\_\_\_\_ E \_\_\_\_\_

Depositional significance Over / tumblySoil type S.C. silt Munsell/Color: 10 YR 3/2 VDG Br

Drawings \_\_\_\_\_ Contents \_\_\_\_\_

Photo/Digital \_\_\_\_\_

## Description/Sketch (with measurements):

Cleaning around the rocks and removing all of the soil from this floor and the side walls of the pit.

Preparing for drawing by cleaning everything. We did not remove much - so elevations did not change much.

1 bag to the lab

Note refs 2006-30-65

Elev 9

PAREP 2006 LOT FORM

Excavator 30 WAG

Date 2006-Mar-6

Op/SubOp/Lot: 02/38/50 Ex. Unit K Size (NxEx) .5x.5m

Site: E1 (Infetal (S-002)) Str 02

Initial Lot? NO Prev. lot 48 Next lot \_\_\_\_\_ BGS: 105-120cm

Initial elev.: NW (-446) 1000.90 NE (-94) 1000.95 SW (-144) 1000.88 SE (-100) 1000.97

Final elev.: NW (-416) 1000.90 NE (-94) 1000.95 SW (-144) 1000.88 SE (-117) 1000.86

Reference corner: \_\_\_\_\_ N \_\_\_\_\_ E \_\_\_\_\_

Depositional significance a / floor

Soil type clay Munsell/Color 10 YR 4/3 Brown

Drawings \_\_\_\_\_ Contents \_\_\_\_\_

Photo/Digital \_\_\_\_\_

Description/Sketch (with measurements):

Fourth of an EU in the <sup>SW</sup> ~~SE~~ corner to see how far down and out from Zucaritas wall it went. It does not go past this point - we went down 10cm looking for it.

Large piece of ceramics found right at the edge of the floor.

Note refs 2006-30-666

## PAREP 2006 LOT FORM

Excavator 30 WAGDate 2006 Mar-6Op/SubOp/Lot: 02/38/51 Ex. Unit L Size (NxEx) .5x.5mSite: E1 Cafetal (S-002) Str 02Initial Lot? NO Prev. lot 38 Next lot 54 BGS: 90-100cmInitial elev.: NW (91) 1000.98 NE (96) 1001.41 SW (88) 1000.62 SE (67) 1000.89Final elev.: NW (91) 1000.98 NE (96) 1001.41 SW (117) 1000.33 SE (67) 1000.89

Reference corner: \_\_\_\_\_ N \_\_\_\_\_ E \_\_\_\_\_

Depositional significance \_\_\_\_\_ / floorSoil type clay Munsell/Color 10 YR 4/3 BrownDrawings NA Contents ceramics - 7Photo/Digital NA obsidian - 1chert - 1

## Description/Sketch (with measurements):

Fourth of an EV in the SE corner to make  
sure the bajareque floor does not continue here.

It was not continued out this far.

1 bag to the lab.

Note refs 2006-30-66

## PAREP 2006 LOT FORM

Excavator 30 WAG Date 2006-Mar-23Op/SubOp/Lot: 02/38/52 Ex. Unit G Size (NxEx) 1x1mSite: E1 (afetal (S-002)) Str 02Initial Lot? NO Prev. lot 41 Next lot NA BGS: 0-55cmInitial elev.: NW (0)1002.39 NE (0)1002.51 SW (0)1002.20 SE (0)1002.65Final elev.: NW (-35)1002.04 NE (-10)1002.51 SW (-56)1001.8 SE (-30)1002.35Reference corner: NW N -26 E 47.18Depositional significance arch./wall util./floor / claySoil type sandy clayey silt Munsell/Color 10 YR 4/3 Brown  
sandy clayey silt 10 YR 4/3 BrownDrawings NA Contents ceramics - 75Photo/Digital YES obsidian - 2  
chert - 2  
toha - 2 lithic - 1

## Description/Sketch (with measurements):

We returned here because we found a line that extended into Op 02/55 that looked like a more likely front line for Choco Krispis wall here. After cutting through the old spot we thought was the wall we reached the front of this line to find that there is no wall beneath it.

Rice Krispis wall extends underneath this wall. It looks like Rice Krispis ~~wall~~ <sup>floor</sup> was built first along with Zucaritas, then Choco Krispis wall that we went through, and this line (Captain Crunch) is actually either a step or another wall.

1 bag to the lab

Note refs 2006-30-(88,92)

## PAREP 2006 LOT FORM

Excavator 30 WAGDate 2006-04-3Op/SubOp/Lot: 02/38/53Ex. Unit JSize (NxEx) 1x1Site: El CafetalStr 02Initial Lot? NO Prev. lot 45 Next lot 112 BGS: 0-100 cmInitial elev.: NW (-55) 1002.17 NE (-26) 1002.10 SW (-55) 1002.28 SE (-50) 1000.38Final elev.: NW (-97) 1001.75 NE (-26) 1002.10 SW (-77) 1001.95 SE (-94) 999.44  
(-151)Reference corner: NW N -1.25 E 49.90Depositional significance arch. / fillSoil type sandy clayey silt Munsell/Color 10 YR 3/2 V DG Brown

Drawings \_\_\_\_\_

Contents ceramics - 26

Photo/Digital \_\_\_\_\_

obsidian - 3chert - 2lithic - 1

## Description/Sketch (with measurements):

Neither Cheertos nor Special K goes down very far before hitting fill - more likely additions

Removed tumble to reveal a ledge on Zucartes to be called Frosted Flakes - sketch in notes

Opening another EU to see relation between Special K and Frosted Flakes.

I bag.

Note refs 2006-30-123

## PAREP 2006 LOT FORM

Excavator 30 WAG Date 2006-04-24Op/SubOp/Lot: 02/38/54 Ex. Unit L Size (NxEx) 44.5x.5mSite: E1 Cafetal Str 02Initial Lot? No Prev. lot 51 Next lot 55 BGS: 90-120cmInitial elev.: NW (91) 1000.99 NE (-56) SW (117) SE (67)Final elev.: NW (100) 1000.89 NE (-56) SW (117) SE (67)Reference corner: NW N -1.94 E 51.77Depositional significance arch. / floorSoil type clay Munsell/Color 10 YR 4/3 BrownDrawings NA Contents Ceramics-12Photo/Digital  obsidian-1bejareque-4

## Description/Sketch (with measurements):

We returned to do a probe underneath  
the honeycombs floor in front of  
Zucartas wall.

We brought the NW corner down  
to floor level

1 bag

Note refs 2006-30-177

## PAREP 2006 LOT FORM

Excavator 30 WAG Date 2006-04-24Op/SubOp/Lot: 02/38/55 Ex. Unit L Size (NxEx) 1x1mSite: E Cafetal Str 02Initial Lot? No Prev. lot 54 Next lot 56 BGS: 100-120cmInitial elev.: NW (100) 1000.89 NE (56) 1001.41 SW (117) 1000.62 SE (67) 1000.89Final elev.: NW (117) 1000.72 NE (67) 1001.30 SW (117) 1000.62 SE (70) 1000.86Reference corner: NW N -1.94 E -5.77Depositional significance arch. / floorSoil type clay Munsell/Color 10 YR 4/3 BrownDrawings \_\_\_\_\_ Contents ceramics - 65Photo/Digital \_\_\_\_\_ obsidian - 2  
bayarque - 7  
chert - 1

## Description/Sketch (with measurements):

Bringing this EU down to an even level.

Continuing probe under floor level

1 bag

Note refs 2006-30-177



## PAREP 2006 LOT FORM

Excavator 30 WAG Date 2006-04-24Op/SubOp/Lot: 02/38/56 Ex. Unit L Size (NxEx) 1x1mSite: El Cafetal Str 02Initial Lot? No Prev. lot 55 Next lot 57 BGS: 100-720cmInitial elev.: NW (117)1000.72 NE (67)1001.30 SW (117)1000.62 SE (70)1000.86Final elev.: NW (120)1000.69 NE (85)1001.12 SW (120)1000.59 SE (98)1000.66Reference corner: NW N -1.94 E 5.77Depositional significance arch. / floorSoil type clay Munsell/Color 10 YR 4/3 BrownDrawings N/A Contents ceramics-16Photo/Digital                      bejarque-7  
                     taba-2  
                     carbon-1

## Description/Sketch (with measurements):

Probe - good context.2 bagsNote refs 2006-30-178

## PAREP 2006 LOT FORM

Excavator JO WAGDate 2006-04-25Op/SubOp/Lot: 02/38/57Ex. Unit LSize (NxEx) 1x1mSite: El CafetalStr 02Initial Lot? NO Prev. lot 56 Next lot NA BGS: 120-140cmInitial elev.: NW (120) 1000.72 NE (85) 1001.30 SW (120) 1000.62 SE (90) 1000.86Final elev.: NW (142) 1000.5 NE (110) 1001.05 SW (145) 1000.37 SE (115) 1000.61Reference corner: NW N -1.94 E 5.77Depositional significance arch. / FloorSoil type clay Munsell/Color 10 YR 7/3 Brown

Drawings \_\_\_\_\_

Contents Ceramics-1

Photo/Digital \_\_\_\_\_

## Description/Sketch (with measurements):

This is the final portion of the prob.

this is sterile soil at the end

Note refs 2006-30-180