

2006

EPV Op. 03-16 Lot Forms 2006

Clarissa Cagnato

Follow this and additional works at: <https://digital.kenyon.edu/honduras>



Part of the Archaeological Anthropology Commons

Recommended Citation

Cagnato, Clarissa, "EPV Op. 03-16 Lot Forms 2006" (2006). *Four Valleys Archive*. Paper 96827.
<https://digital.kenyon.edu/honduras/96827>

This Lot Card is brought to you for free and open access by the Anthropology at Digital Kenyon: Research, Scholarship, and Creative Exchange. It has been accepted for inclusion in Four Valleys Archive by an authorized administrator of Digital Kenyon: Research, Scholarship, and Creative Exchange. For more information, please contact noltj@kenyon.edu.

PAREP 2006 LOT FORM

Excavator 24Date 9 March 2006Op/SubOp/Lot: 03/16/01Ex. Unit ASize (NxEx) 1x1Site: El GuayabalStr test pitInitial Lot? yes Prev. lot - Next lot 02 BGS: 0-20 cmInitial elev.: NW 990.82 NE 990.91 SW 990.85 SE 990.95Final elev.: NW 990.58 NE 990.70 SW 990.61 SE 990.73Reference corner: SE N 421.51 E -416.45Depositional significance topsoil / humusSoil type Sandy clay Munsell/Color 10 YR 6/2

Drawings _____

Contents 5 obsidian flakesPhoto Digital 1
pre-excavation26 chert
20 small stones of various
colours
6 ceramics

Description/Sketch (with measurements):

Note refs 2006-24-47

PAREP 2006 LOT FORM

Excavator 24Date 9 March 2006Op/SubOp/Lot: 03/16/02Ex. Unit ASize (NxEx) 1x1Site: El GuayabalStr test pitInitial Lot? no Prev. lot 01 Next lot 03 BGS: 20 - 30 cmInitial elev.: NW 990.58 NE 990.70 SW 990.61 SE 990.73Final elev.: NW 990.53 NE 990.61 SW 990.55 SE 990.65Reference corner: SE N 421.51 E -416.45Depositional significance topsoil / humusSoil type sandy clay Munsell/Color 10 YR 6/2

Drawings _____

Contents 29 chert pieces

Photo/Digital _____

2 chert flakes4 small white pebbles3 ceramics

Description/Sketch (with measurements):

Note refs 2006-24-49

PAREP 2006 LOT FORM

Excavator 24Date 10 March 2006Op/SubOp/Lot: 03/16/03Ex. Unit A Size (NxEx) 1x1Site: El GuayabalStr test pitInitial Lot? no Prev. lot 02 Next lot 04 BGS: 30-40Initial elev.: NW 990.53 NE 990.61 SW 990.55 SE 990.65Final elev.: NW 990.42 NE 990.52 SW 990.45 SE 990.55Reference corner: SE N 421.51 E 416.45Depositional significance overburden / collapseSoil type sandy clay Munsell/Color 10 YR 6/3

Drawings _____

Contents 33 chert

Photo/Digital _____

7 bidden25 coloured rocks20 ceramics

Description/Sketch (with measurements):

Already at this level we are finding numerous ceramics, as well as chert and other coloured stones + flakes.

Note refs 2006-24-52

PAREP 2006 LOT FORM

Excavator 24Date 20 March 2006Op/SubOp/Lot: 03/16/04Ex. Unit ASize (NxEx) 1x1Site: E1 GuayabalStr test pitInitial Lot? no Prev. lot 03 Next lot 05 BGS: 40-50 cmInitial elev.: NW 990.42 NE 990.52 SW 990.45 SE 990.55Final elev.: NW 990.30 NE 990.42 SW 990.33 SE 990.45Reference. corner: SE N 421.51 E -416.45Depositional significance overburden / collapseSoil type sandy clay Munsell/Color 10 YR 6/2

Drawings _____

Contents 40 chert

Photo/Digital _____

5 - bridish
1 piece of bajareque
3 red stones

Description/Sketch (with measurements):

Unlike the previous lot, there are no ceramics to be found in this lot. Chert is very numerous and is increasing as we go deeper.

Note refs 2006-24-56

PAREP 2006 LOT FORM

Excavator 24Date 20 March 2006Op/SubOp/Lot: 03/16/05Ex. Unit ASize (NxEx) 1x1Site: El GuayabalStr test pitInitial Lot? no Prev. lot 04 Next lot 06 BGS: 50-60 cmInitial elev.: NW 990.30 NE 990.42 SW 990.33 SE 990.45Final elev.: NW 990.22 NE 990.34 SW 990.25 SE 990.35Reference corner: SE N 421.51 E -416.45Depositional significance overburden / collapseSoil type sandy clay Munsell/Color 10 YR 6/2

Drawings _____

Contents 42 chert

Photo/Digital _____

1 obsidian13 ceramics9 various rocks (white, red)

Description/Sketch (with measurements):

No soil change yet, ceramics have
been found once more.

Note refs 2006-24-57

PAREP 2006 LOT FORM

Excavator 24Date 21 March 2006Op/SubOp/Lot: 03/16/06Ex. Unit ASize (NxEx) 1x1Site: El Guayabal

Strat pit

Initial Lot? no Prev. lot 05 Next lot 07 BGS: 60-70 cmInitial elev.: NW 990.22 NE 990.34 SW 990.25 SE 990.35Final elev.: NW 990.02 NE 990.16 SW 990.13 SE 990.22Reference corner: SE N 421.51 E -416.45Depositional significance overburden / collapseSoil type silty sand Munsell/Color 10 YR 4/4

Drawings _____

Contents 48 chert

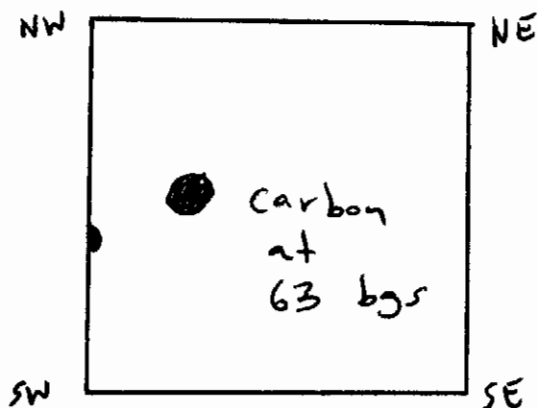
Photo/Digital _____

2 ceramiccarbon sample

Description/Sketch (with measurements):

S.s. has become more silty, and
carbon has appeared in this layer.

Sample taken at
63 cm bgs.



(ceramics not
associated with
carbon)

Note refs 2006-24-60

PAREP 2006 LOT FORM

Excavator 24Date 21 March 2006Op/SubOp/Lot: 03/16/07Ex. Unit ASize (NxEx) 1x1Site: El GrayabalStr test pitInitial Lot? no Prev. lot 06 Next lot 08 BGS: 70-80 cmInitial elev.: NW 990.02 NE 990.16 SW 990.13 SE 990.22Final elev.: NW 990.02 NE 990.13 SW 990.05 SE 990.15Reference corner: SE N 421.51 E -416.45Depositional significance overburden / collapseSoil type silty sand Munsell/Color 10 YR 4/4

Drawings _____

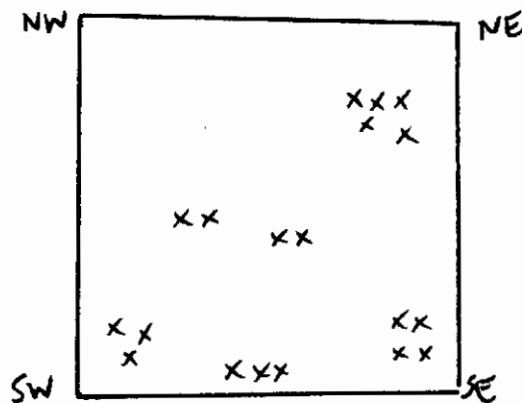
Contents 21 chert

Photo/Digital _____

labridish4 ceramiccarbon sample

Description/Sketch (with measurements):

Carbon is present throughout the entire layer, therefore carbon taken from multiple parts.

Note refs 2006-24-62

PAREP 2006 LOT FORM

Excavator 24Date 22 March 2006Op/SubOp/Lot: 03/16/08Ex. Unit ASize (NxEx) 1x1Site: El GuayabalStr test pitInitial Lot? no Prev. lot 07 Next lot 09 BGS: 80-90 cmInitial elev.: NW 910.02 NE 910.13 SW 910.05 SE 910.15Final elev.: NW 989.95 NE 990.02 SW 989.95 SE 990.06Reference corner: SE N 421.51 E -416.45Depositional significance overburden / collapseSoil type clayey siltMunsell/Color 10 YR 4/2 + carbon inclusions

Drawings _____

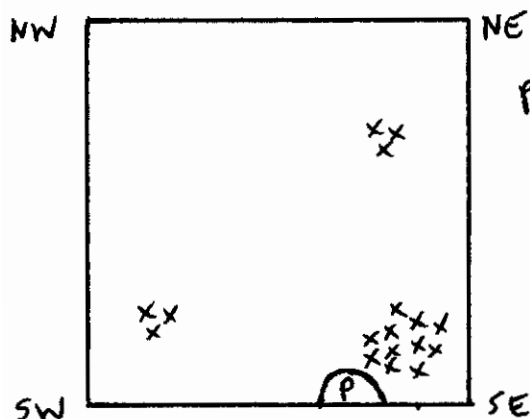
Contents 8 ceramics

Photo/Digital _____

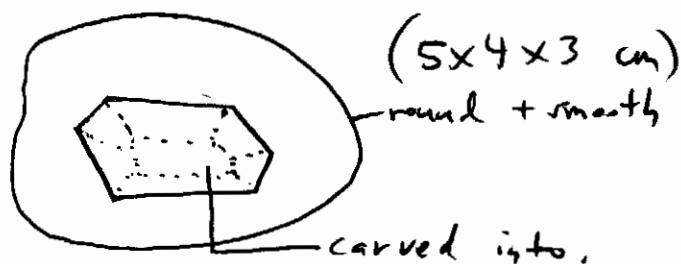
25 chertcarbon sample1 rock (carved into)

Description/Sketch (with measurements):

Soil has changed, but continues to have carbon, in particular in the SE corner of the unit.



One interesting rock was found, which was carved into.

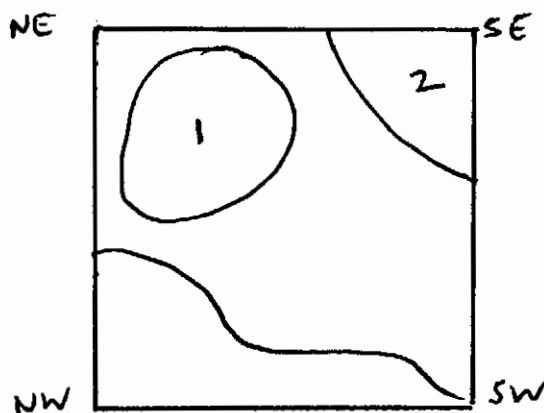
Note refs 2006-24-65

PAREP 2006 LOT FORM

Excavator 24Date 23 March 2006Op/SubOp/Lot: 03/16/09Ex. Unit A Size (NxEx) 1x1Site: El GuayabalStr test pitInitial Lot? no Prev. lot 08 Next lot 10 BGS: 90-100 cmInitial elev.: NW 989.95 NE 990.02 SW 989.95 SE 990.06Final elev.: NW 989.80 NE 989.92 SW 989.83 SE 989.94Reference corner: SE N 421.51 E -416.45Depositional significance overburden / collapseSoil type silty sand Munsell/Color 10 YR 4/4
(full of carbon)Drawings _____ Contents 80 ceramicsPhoto/Digital _____ 21 chert2 obsidian3 carbon sampler

Description/Sketch (with measurements):

This lot has yielded very high number of ceramics as well as carbon.
The ^{possible} v-pothole was not one.



High concentrations of carbon in these areas.
sampler taken from each one.

Note refs 2006-24-68+69

PAREP 2006 LOT FORM

Excavator 24Date 23 March 2006Op/SubOp/Lot: 03/16/10Ex. Unit ASize (NxEx) 1x1Site: El Guayabalstr test pitInitial Lot? no Prev. lot 09 Next lot 11 BGS: 100-110 cmInitial elev.: NW 989.80 NE 989.92 SW 989.83 SE 989.94Final elev.: NW 989.72 NE 989.82 SW 989.76 SE 989.86Reference corner: SE N 421.51 E -416.45Depositional significance overburden / collapseSoil type silty sand Munsell/Color 10 YR 5/3

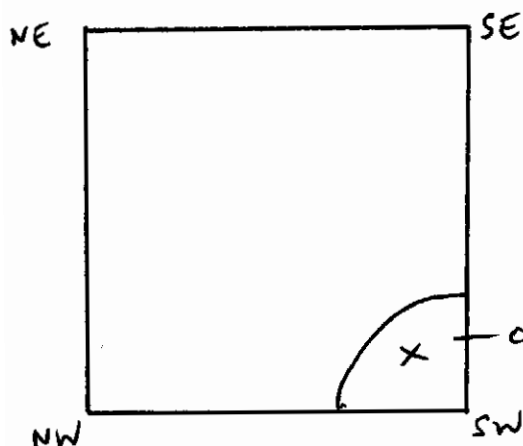
Drawings _____

Contents 9 ceramics

Photo/Digital _____

2 chert1 obsidiancarbon sample x 1

Description/Sketch (with measurements):



The ceramics have decreased, and so has the carbon in this lot.
Carbon is now concentrated in one area (SW corner)

carbon sample @ 109 cm bgs

Note refs 2006-24-70

PAREP 2006 LOT FORM

Excavator 24Date 24 March 2006Op/SubOp/Lot: 03/16/11Ex. Unit ASize (NxEx) 1x1Site: El GuayabalStr test pitInitial Lot? no Prev. lot 10 Next lot - BGS: 110-120 cmInitial elev.: NW 989.72 NE 989.82 SW 989.76 SE 989.86Final elev.: NW 989.62 NE 989.71 SW 989.65 SE 989.75Reference corner: SE N 421.51 E 416.45Depositional significance overburden / collapseSoil type silty sand Munsell/Color 10 YR 4/4Drawings 1Contents nonePhoto/Digital 2east + north face
lots 01-11

Description/Sketch (with measurements):

last lot in this unit.

This lot revealed no materials, and the soil is very compact and hard.

Note refs 2006-24-74