
Four Valleys Archive

Anthropology

2005

EPV Op. 02-14 Lot Forms 2005

Ellen Bell

Follow this and additional works at: <https://digital.kenyon.edu/honduras>



Part of the Archaeological Anthropology Commons

Recommended Citation

Bell, Ellen, "EPV Op. 02-14 Lot Forms 2005" (2005). *Four Valleys Archive*. Paper 96841.
<https://digital.kenyon.edu/honduras/96841>

This Lot Card is brought to you for free and open access by the Anthropology at Digital Kenyon: Research, Scholarship, and Creative Exchange. It has been accepted for inclusion in Four Valleys Archive by an authorized administrator of Digital Kenyon: Research, Scholarship, and Creative Exchange. For more information, please contact noltj@kenyon.edu.

Op/SubOp/Lot: 02/14/1 Ex. Unit A Size (NxE) 12m

Site: S-02 E1 Catedral Str: 02

Initial Lot? Yes Prev. lot - Next lot 02/14/02

Initial elevations: NW 1000.78 NE N SW 1000.83 SE 1000.98

Final elevations: NW 1000.93 NE 1000.78 SW 1000.95 SE 1000.98

Depositional significance Overburden / Humus

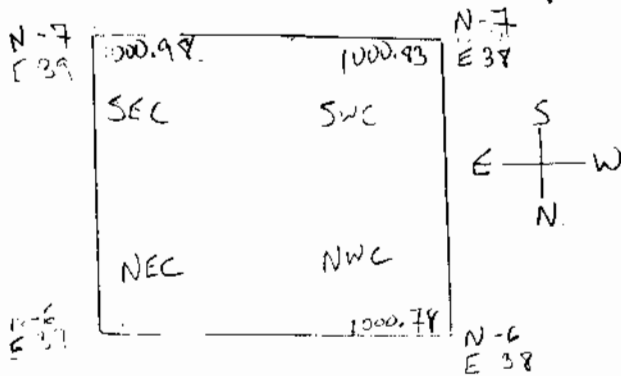
Soil type Sandy loam - organic rich Munsell/Color dark brown

Drawings _____ Contents Study, observation chart

Photo/Digital _____

Description/Sketch (with measurements):

This is the first EU(A) in Op. 02/14. It is the northern of the two EU on the W end of the unit. A lot of roots - some large - one large root that extended from the SEC to the NWC was cut & removed near the top of the lot - 0-20 cm high.



Note refs _____

Op/SubOp/Lot: 02/14/02Exc. Unit ASize (NxF) 1x1mSite: SOZ, El GafelStr 02Initial Lot? noPrev. lot 02/14/01Next lot 02/14/03Initial elevations: NW 1000.73 NE 1000.78 SW 1000.75 SE 1000.78Final elevations: NW 1000.56 NE 1000.58 SW 1000.57 SE 1000.58Depositional significance OverburdenSoil type ClayMunsell/Color 11-med. brown

Drawings _____

Contents Shards, Obsidian, chert

Photo/Digital _____

Description/Sketch (with measurements):

Context below Op 02/14/01; 20-40cm high. Flats contain. Soil is a light-brown + includes some more clay than before. Ceramics include a bowl w/ a comm-shaped rim; a lot of chert is present - some in large chunks + flakes; also obsidian - small flakes + a prismatic blade fragment. Some looks to be from 1x tepeque, some possibly from El Chagal. All magnets from SEC.

Obsidian = 5

Shards = 10

Chert = 6

Note refs _____

Op/SubOp/Lot: 02/14/3Ex. Unit A Size (NxE) 1x1mSite: S-02 El CafetalStr 02Initial Lot? NOPrev. lot 02/14/02Next lot 02/14/09Initial elevations: NW 1002.56 NE 1000.58 SW 1000.57 SE 1000.58Final elevations: NW 1002.34 NE 1000.37 SW 1000.36 SE 1000.37Depositional significance OverburdenSoil type ClayMunsell/Color light - med brown

Drawings _____

Contents Shards, Obsidian, chert

Photo/Digital _____

Description/Sketch (with measurements):

Continuing down in EU/A - looking for plaza floor in E end of plaza
 Still no sign of floor, but we have found a nice common shaped
 rim. 40-60 cm high

Shards: 387

Tide: 8 small cobbles

Chert: 12 frags - some very fine-grained

Quartz: 2

Pigment stones: 1

Obsidian: 20 (1 prismatic blade)

Note refs _____

Op/SubOp/Lot: 02/14/04

Ex. Unit A

Size (NxE) 11/12

Site: S-02 El. Cathedral

Str: 02

Initial Lot? NO

Prev. lot 02/14/03

Next lot 02/14/05

Initial elevations: NW 1000.84 NE 1000.87 SW 1000.96 SE 1000.37

Final elevations: NW 1000.14 NE 1000.17 SW 1000.16 SE 1000.17

Depositional significance Overburden - near surface (S), possible fill/PG-TO?

Soil type Clay

Munsell/Color light brown

Drawings _____

Contents Shards = 14

Photo/Digital _____

rocks = a lot

Description/Sketch (with measurements):

Continuing down into clay layer that includes a number of rocks - the rocks are fairly flat-land, so they may have fallen onto a floor - or at least onto the surface level, 60-80 cm

Note refs _____

PAREP 2005 LOT FORM

Excavator # 1

Date 23 June 2005

Op/SubOp/Lot: 02/14/05

Ex. Unit A

Size (NxEx) 12/12

Site: S-02, El Capital

Str 02

Initial Lot? NO

Prev. lot 02/14/04

Next lot —

Initial elevations: NW 1000.14 NE 1002.17 SW 1000.16 SE 1000.17

Final elevations: NW 999.12 NE 999.98 SW 999.96 SE 999.98

Depositional significance Stable

Soil type Clay w/ sand

Munsell/Color light orange-brown

Drawings _____

Contents _____

Photo/Digital _____

Description/Sketch (with measurements):

Contig below scattered rocks, 10-100cm high. Many into a layer of sandy clay with scattered large rocks (rounded river cobbles + boulders) that may have been deposited naturally.

Note refs _____

PAREP 2005 LOT FORM

Excavator B 1

Date 21 Jan 2003

Op/SubOp/Lot: 02/14/06

Ex. Unit B

Size (NxEx) 1A

Site: S-02 El Cafetal

Str 02

Initial Lot? Yes

Prev. lot N/A

Next lot 02/15/07

Initial elevations: NW X NE X SW 1000.91 SE 1001.09

Final elevations: NW 1000.87 NE 1000.88 SW 1000.86 SE 1000.89

Depositional significance Overbank

Soil type loam/sandy loam

Munsell/Color Dark brown

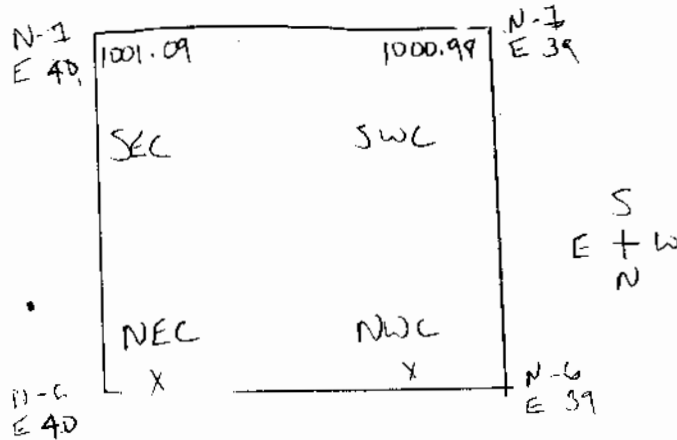
Drawings _____

Contents Shells 23, Obsidian 3

Photo/Digital _____

Description/Sketch (with measurements):

Site 20 m in EU/B - a few shells; 0-20 cm bsp.



Note refs _____

PAREP 2005 LOT FORM

Excavator A. 1

Date 29 June 2005

Op/SubOp/Lot: 02/14/07

Ex. Unit B

Size (N x E) 1 x 1 m

Site: S 02 El Capitan

Str 02

Initial Lot? No

Prev. lot 02/14/06

Next lot 02/14/08

Initial elevations: NW 1000.87 NE 1000.88 SW 1000.86 SE 1000.89

Final elevations: NW 1000.66 NE 1000.68 SW 1000.66 SE 1000.69

Depositional significance Overbank / terminal debris

Soil type Sandy loam

Munsell/Color red brown

Drawings _____

Contents Cores = 120

Photo/Digital _____

Obsis = 2

Description/Sketch (with measurements):

20-40 cm bgs in E0/B. no rocks.

Note refs _____

PAREP 2005 LOT FORM

Excavator B 1

Date 27 Jun 2005

Op/SubOp/Lot: 02/14/08

Ex. Unit B

Size (NxE) 1x1m

Site: S-02, E1 Cabal

Str 02

Initial Lot? no

Prev. lot 02/14/07

Next lot 02/14/09

Initial elevations: NW 1000.66 NE 1000.68 SW 1000.66 SE 1000.69

Final elevations: NW 1000.92 NE 1000.91 SW 1000.43 SE 1000.99

Depositional significance overburden / Terminal debris?

Soil type Silty loam w/ clay

Munsell/Color med. brown

Drawings _____

Contents Ceramics = 492

Photo/Digital _____

Obsidian = 11

Flints = 17

Chert = 9

Description/Sketch (with measurements):

40-60 - box, EU/B

Note refs _____

PAREP 2005 LOT FORM

Excavator B1

Date 28 Jun 2005

Op/SubOp/Lot: 02/14/09

Ex. Unit B

Size (NxF) 1x1m

Site: S-02, El Cahul

Str 02

Initial Lot? no

Prev. lot 02/14/08

Next lot N/A

Initial elevations: NW 1000.92 NE 1000.49 SW 1000.93 SE 1000.99

Final elevations: NW 1000.25 NE 1000.28 SW 1000.23 SE 1000.29

Depositional significance Overlth New Surface? TD?

Soil type low w/ clay

Munsell/Color med. brown

Drawings _____

Contents Ceramics = 250

Photo/Digital _____

obsidian = 5

raho = 23

Description/Sketch (with measurements):

60-80cm bsp - ceramics in abundance; no timber

PAREP 2005 LOT FORM

Excavator B1

Date 28 Jun 2005

Op/SubOp/Lot: 02/14/09

Ex. Unit B

Size (N x E) 1 x 1 m

Site: S-02, E1 Catfish

Str 02

Initial Lot? No

Prev. lot 02/14/08

Next lot N/A

Initial elevations: NW 1000.92 NE 1000.48 SW 1000.43 SE 1000.99

Final elevations: NW 1000.25 NE 1000.28 SW 1000.23 SE 1000.29

Depositional significance On-land Near Surface? TD?

Soil type low rd clay

Munsell/Color med. brown

Drawings _____

Contents Ceramics = 250

obsidian = 5

Photo/Digital _____

ratio = 23

Description/Sketch (with measurements):

60-80 cm bgs - ceramics in abundance; no tephra

Note refs _____

Op/SubOp/Lot: 02/14/10

Exc. Unit C

Size (NxI) 1x1m

Site: S-02, El Cabelo

Str 02

Initial Lot? Yes

Prev. lot —

Next lot 02/14/11

Initial elevations: NW X NE 1000.21 SW 1001.09 SE 1001.25

Final elevations: NW 1002.99 NE 1001.02 SW 1000.99 SE 1001.05

Depositional significance Humus, overburden

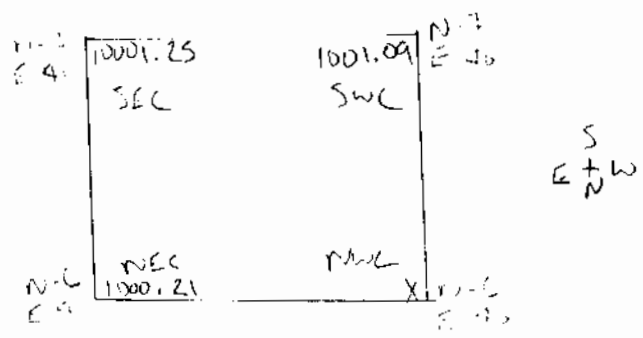
Soil type Sandy loam Munsell/Color dark brown

Drawings _____ Contents shards

Photo/Digital _____

Description/Sketch (with measurements):

Move up into EU/C to look for plaza level (hopefully above the Late Preclassic sherds coming out at 60 m by + below in EU's/A+B). 0-20 m by. Dark brown humus, no rods in this level.



Note refs _____

PAREP 2005 LOT FORM

Excavator B 1

Date 28 June 2005

Op/SubOp/Lot: 02/14/11

Ex. Unit C

Size (NxEx) 1x1m

Site: S-02, El Capitan

Str 02

Initial Lot? no

Prev. lot 02/14/10

Next lot N/A

Initial elevations: NW 1000.99 NE 1001.02 SW 1000.99 SE 1001.02

Final elevations: NW 1000.82 NE 1000.81 SW 1000.82 SE 1000.85

Depositional significance Overburden, terminal debris

Soil type Sandy loam

Munsell/Color _____

Drawings _____

Contents Shards 171

Photo/Digital _____

Ossid 22
Rocks 12

Description/Sketch (with measurements):

Context below initial humus at loam level in E0/C, 20-40cm bsp.
 One large rock appeared in the center of the unit at the base
 of the lot, along with a few smaller stones. No clearly visible
 Late Preclassic decorative modes among the observed ceramics.
 One shot - for this lot or op. 02/14/10 included a decorative
 clay scroll, possibly for a censer (modeled).



Note refs _____

Op/SubOp/Lot: 02/14/12 Ex. Unit 0 Size (N x E) W/L

Site: S-02 E1 Capital Str 02

Initial Lot? Yes Prev. lot — Next lot 02/14/13

Initial elevations: NW 1001.21 NE 1001.51 SW 1001.23 SE 1001.98

Final elevations: NW 1001.20 NE 1001.51 SW 1001.25 SE 1001.28

Depositional significance None, overburden

Soil type Silty loam Munsell/Color dark brown

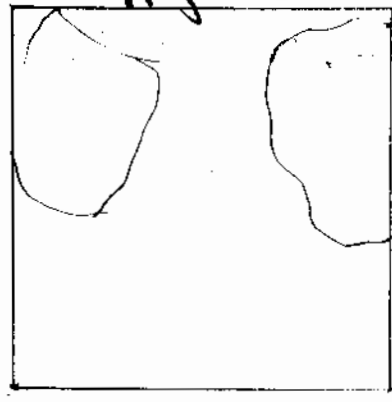
Drawings _____ Contents Shubs

Photo/Digital _____ etc

_____ obv

Description/Sketch (with measurements):

Going up to EU/D, 0-20m bgs to uncover table which we hope will indicate the level of the play floor w/ more precision. Large rocks appy in Eoh part of unit.



Note refs _____

PAREP 2005 LOT FORM

Excavator B 1

Date 29 Jun 2005

Op/SubOp/Lot: 02/14/13

Ex. Unit D

Size (NxE) 1x1

Site: S-02, El Capitan

Str 02

Initial Lot? no

Prev. lot 02/14/12

Next lot 02/14/14

Initial elevations: NW 1001.21 NE 1001.50 SW 1001.25 SE 1001.28

Final elevations: NW 1001.01 NE 1001.51 SW 1001.05 SE 1001.03

Depositional significance Tubbs, terminal debris

Soil type Loe

Munsell/Color dark brown

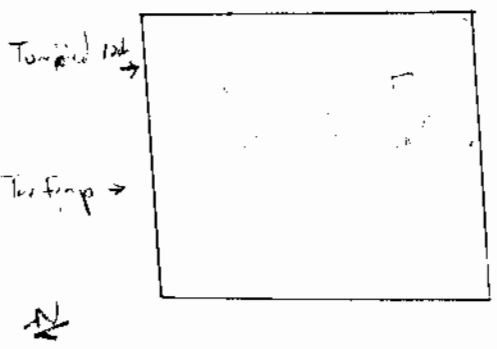
Drawings _____

Contents _____

Photo/Digital _____

Description/Sketch (with measurements):

Conting down in EU/D in front of (W) tumble. A smoothed jar (possibly located on a mud patio surface) found at 63 - by. The jar is located under earth + tumble 48 - west. of E wall of unit + 23 - south of North edge of unit



Note refs _____

Op/SubOp/Lot: 02/14/14 Ex. Unit 0 Size (NxE) 12m

Site: S-02, E1 Capital Str: -02

Initial Lot? NO Prev. lot 02/14/13 Next lot 02/14/16

Initial elevations: NW 1001.00 NE 1001.03 SW 1001.01 SE 1001.03

Final elevations: NW 1000.80 NE 1000.83 SW 1000.81 SE 1000.83

Depositional significance Turbid, fecal debris

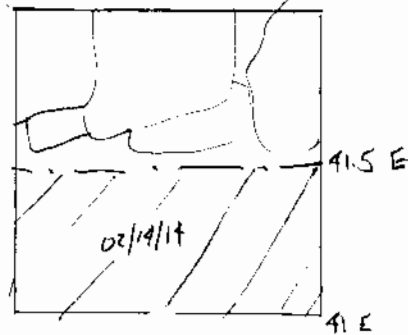
Soil type Loam/Clay Munsell/Color dark brown

Drawings _____ Contents Ceramics

Photo/Digital _____

Description/Sketch (with measurements):

Clearing down in front of (to west of) possible terrace line. The lot includes a smashed jar - or at least a portion of it - uncovered in the previous lot (02/14/13). This lot extends only west of the possible terrace line. The eastern part of the unit remains unexcavated.



Note refs _____

Op/SubOp/Lot: 02/14/15

Ex. Unit E

Size (N x L): 1 x 1

Site: 02, Caseta

Str: 02

Initial Exc: Yes

Prev. lot: -

Next lot: 02/14/17

Initial elev. at: NW 1001.51 NE 1001.77 SW 1001.48 SE 1001.61

Final elev. at: NW 1001.41 NE 1001.41 SW 1001.40 SE 1001.41

Depositional significance: Tumble, Collapse

Soil type: humus

Munsell/Color: dark brown

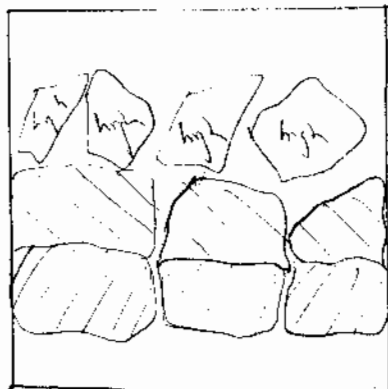
Drawings: _____

Contents: _____

Photo/Digital: _____

Description/Sketch (with measurements):

0-20 cm bsp. clay tumble over/off of west basal wall (which turned out to be Terrace 2, with Terrace 2 in the E margin of EU/E).



/// = flat land
/// = low to N

Note re: _____

Op/SubOp/Lot: 02/14/16

Exc. Unit 0

Size (N&E) 1X/2

Site S-02, E1 Cafeteria

Str 02

Initial elevations ND

Prev lot 02/14/14

Next lot 02/14/20

Initial elevations: NW 1001.01 NE 1001.51 SW 1001.05 SE 1001.28

Final elevations: NW 1000.80 NE 1000.83 SW 1000.81 SE 1000.83

Depositional significance Tumble, terminal debris

Soil type Loamy clay

Munsell/Color brown-orange

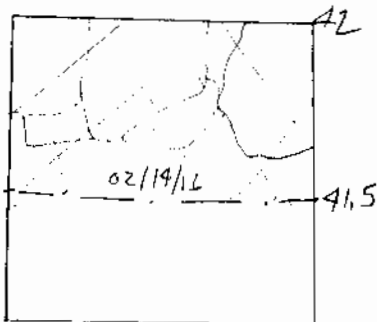
Drawings _____

Contents _____

Photo/Digital _____

Description/Sketch (with measurements):

Remain possible line (100% tumbled) in west 50m of EU/0
20-60m by at SEC. Taking out the stamped line that we had
been protecting through the excavator. The line had been along a much
better preserved terrace face - Terrace 1.



Note refs _____

Op/SubOp/Lot: 02/14/17

Ex. Unit E

Size (N x E) 1 x 1 m

Vic: S 02, E1 Cabal

Str 02

Initial loc: AD

Prev. lot 02/14/15

Next lot 02/14/19

Initial elevations: NW 1001.91 NE 1001.91 SW 1001.90 SE 1001.91

Final elevations: NW 1001.21 NE 1001.21 SW 1001.20 SE 1001.21

Deposit and significance Tumble, terminal debris

Soil type Sandy loam

Munsell/Color light brown

Drawings

Contents

Photo/Digital

Description/Sketch (with measurements):

Continuing to cut down through tumble over Terrace 1+2 in E0/E. 20-40m long SEC.

Note refs

Op/SubOp/Lot 02/19/18

Exc. Unit E

Size (Nxt) 1x1

Site F02, E1 Cabal

Str 02

Initial Lot 10

Prev. lot 02/04/17

Next lot 02/19/19

Initial elevations: NW 1001.21 NE 1001.21 SW 1001.20 SE 1001.21

Final elevations: NW 1001.01 NE 1001.01 SW 1001.00 SE 1001.01

Depositional significance Timber, terminal debris

Soil type Clay

Munsell/Color Brown-orange

Drawings _____

Contents Coins - 60

Photo Log _____

Description/Sketch (with measurements):

Conting down to top of Feature 1 in West 50' of EU/E, 40-60m bgs SEC.

Note refs _____

Op/SubOp/Lot: 02/14/19

Ex. Unit E

Size (NxE) 1x1m

Site: J-02, El Capitan

Str 02

Initial lot: NO

Prev. lot 02/14/18

Next lot 02/14/23

Initial elevations: NW 1001.01

NE 1001.01

SW 1001.00

SE 1001.01

Final elevations: NW 1000.96

NE 1000.96

SW 1000.95

SE 1000.96

Depositional significance Terminated debris

Soil type clay

Munsell/Color brown-orange

Drawings _____

Contents _____

Photo/Digital _____

Description/Sketch (with measurements):

Cutting down to top of Terrace 1 in EU/E, 60-65 cm bgs SL
Basically clean off the top of the terrace surface.

Note refs _____

Op/SubOp/Lot: 02/14/20

Ex. Unit D+E

Size (NxE) 12x16m

Site: S-02, El Capital

Str 02

Initial Lot? No

Prev. lot 02/14/16

Next lot -

Initial elevations: NW 1000.80 NE 1000.83 SW 1000.91 SE 1000.83

Final elevations: NW 1000.61 NE 1000.62 SW 1000.62 SE 1000.63

Depositional significance Tumble, terminal debris

Soil type clay

Munsell/Color brown-orange

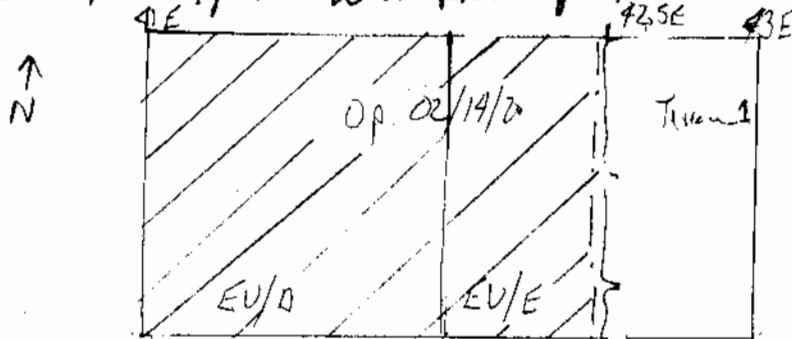
Drawings

Contents

Photo/Digital

Description/Sketch (with measurements):

Cutting down to base of Terrace 1 level west of Terrace 1 west face. Ended excavate of EU/D at base of lot. 60-80m bp. Lot extends 50m into EU/E to expose west face of Terrace 1



Note refs

Op/SubOp/Lot: 02/14/21

Ex. Unit F

Size (NxE) 1x1m

Site: S-02, E1 Capital

Str 02

Initial Lot? Yes

Prev. lot -

Next lot 02/19/23

Initial elevations: NW 1001.77 NE 1002.17 SW 1001.61 SE X

Final elevations: NW 1001.20 NE 1001.80 SW 1001.20 SE 1001.80

Depositional significance Tumble, terminal debris

Soil type Sandy loam

Munsell/Color light brown

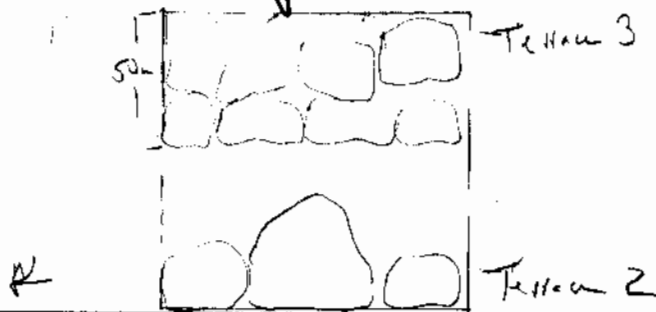
Drawings

Contents

Photo/Digital

Description/Sketch (with measurements):

Cutting down through tumble to just above the top of Terrain 2 in the western part (40cm) of EU/F + to the top of Terrain 3 in the eastern part (60cm) 0-60-cm bp on west; 0-40cm bp in east.



Note refs

Op/SubOp/Lot: 02/14/22

Ex. Unit 6

Size (NxL) 181m

Site: S-02, El. Cofed

Str 02

Initial Lot? Yes

Prev. lot -

Next lot 02/19/22

Initial elevations: NW 1002.12 NE 1002.29 SW X SE X

Final elevations: NW 1001.90 NE 1001.90 SW 1001.91 SE 1001.91

Depositional significance Tumble, Terminal debris

Soil type S-glo

Munsell/Color dark brown = light brown

Drawings

Contents

Photo/Digital

Description/Sketch (with measurements):

Cutting through tumble to tumbled/fallen layer just above the surface of Terrace 3. 0-90m by on E, 0-20m by on W.

Note refs

Op/SubOp/Lot: 02/14/23

Ex. Unit E+F

Size (N x I) 1 x 2

Site: S-02, El. Collected

Str 02

Initial Lot? NO

Prev. lot 02/14/19

Next lot -

Initial elevations: NW 1001.01 NE 1001.80 SW 1001.00 SE 1001.80

Final elevations: NW 1000.70 NE 1001.75 SW 1000.70 SE 1001.75

Depositional significance Trench debris

Soil type Clay

Munsell/Color brown - clay

Drawings

Contents Shards = 135

Chert = 4

Photo/Digital

Obsidian = 8

bj = 11

Description/Sketch (with measurements):

Putting trowel & clay closer to top of Terrace 1+2 in E0/E+F & cutting down to base of Terrace 1 in west part of E0/E. Not much to remove in east part of E0/E; most work done in E0/E. Cleaned spot & artifacts from top of Terrace 1+2, +3.

Note refs

PAREP 2005 LOT FORM

Excavator # 1

Date 12 July 2008

Op/SubOp/Lot: 02/14/20

Ex. Unit F+G

Size (NxF) 1x2m

Site: S-02, E1, Capital

Str 02

Initial Lot? NO

Prev. lot 02/14/21; 02/14/22 Next lot —

Initial elevations: NW 1001.80 NE 1001.90 SW 1001.80 SE 1001.90

Final elevations: NW 1001.50 NE 1001.50 SW 1001.50 SE 1001.80

Depositional significance Terminal debris

Soil type Sandy loam

Munsell/Color light brown

Drawings _____

Contents _____

Photo/Digital _____

Description/Sketch (with measurements):

Clear down to surface of Terrain 3 in EU/F+G.
Not much to take out on west part of 1x2m unit -
most of clearing done in east part (i.e. EU/G). 90-50m by
on east, 20-25m by on west.

Note refs _____