

---

Four Valleys Archive

Anthropology

---

2005

## EPV Op. 04-15 Lot Forms 2005

Yifei Mu

Follow this and additional works at: <https://digital.kenyon.edu/honduras>



Part of the Archaeological Anthropology Commons

---

### Recommended Citation

Mu, Yifei, "EPV Op. 04-15 Lot Forms 2005" (2005). *Four Valleys Archive*. Paper 96853.  
<https://digital.kenyon.edu/honduras/96853>

This Lot Card is brought to you for free and open access by the Anthropology at Digital Kenyon: Research, Scholarship, and Creative Exchange. It has been accepted for inclusion in Four Valleys Archive by an authorized administrator of Digital Kenyon: Research, Scholarship, and Creative Exchange. For more information, please contact [noltj@kenyon.edu](mailto:noltj@kenyon.edu).

Op/SubOp/Lot: 04/15/1

Ex. Unit A

Size (NxEx) 1 X 1 m

Site: El Paraíso / S-001

Str Str. 2

Initial Lot? Yes

Prev. lot —

Next lot 04/15/2

Initial elevations: NW <sup>33</sup> 1010.56 NE <sup>24</sup> 1010.70 SW 1010.87 SE <sup>22</sup> 1010.70

Final elevations: NW 1010.54 NE 1010.63 SW 1010.66 SE 1010.65

Depositional significance humus 0-20 cm BGS

medium brown

Soil type clay

Munsell/Color —

Drawings —

Contents this lot includes ceramic shreds, shells, carbon and some modern materials

Photo/Digital 04-15-1 E U A

**Description/Sketch (with measurements):**

This lot is located on the western ~~end~~ end of an E-W trench that bisects Str. 2. It is the surface of excavation unit A, 0-20 cm BGS. Contents recovered from this lot include ceramic shreds, shell and a piece of carbon, all of which are not in their original context.

Note refs 2005-18-11

Op/SubOp/Lot: 04/15/2 Ex. Unit A Size (NxE) 1 X 1 mSite: El Paraíso/S-001 Str. Str. 2.Initial Lot? No Prev. lot 04/15/1 Next lot 04/15/3Initial elevations: NW 1010.54 NE 1010.63 SW 1010.66 SE 1010.65Final elevations: NW 40 NE 42 SW 37 SE 37  
NW 1010.47 NE 1010.45 SW 1010.50 SE 1010.50Depositional significance humus 20-40 cm BGSSoil type clay Munsell/Color medium brownDrawings — Contents modern materials, ceramic  
shardsPhoto/Digital 04-15-2 EU A**Description/Sketch (with measurements):**

This lot is 20-40 cm BGS in the same EU as Lot 1. Soil in this lot remains extremely moist and loose, and is rich in roots and organic material. The artifacts in this lot are in a disturbed context (proven by the recovery of plastic, a button, etc.) and were relatively scarce. Several large cobbles are present in this lot, probably part of the construction of the road running parallel to Str. 2.

Note refs 2005-18-11, 12

Op/SubOp/Lot: 04/15/3 Ex. Unit A Size (NxL) 1x1mSite: El Paraiso / S-001 Str Str. 2Initial Lot? No Prev. lot 04/15/2 Next lot 04/15/4Initial elevations: NW 1010.47 NE 1010.45 SW 1010.50 SE 1010.50Final elevations: <sup>47</sup>NW 1010.40 <sup>49</sup>NE 1010.38 <sup>47</sup>SW 1010.40 <sup>40</sup>SE 1010.47  
on rockDepositional significance humusSoil type clay Munsell/Color medium brownDrawings — Contents ceramic (modern), volcanic tuff, glassPhoto/Digital 04-15-3  
EU A, EU (Detail)**Description/Sketch (with measurements):**

This lot is the layer between the end of Lot 2 and the darker, more clayey soil layer (Lot 4). Soil in this lot has the same characteristics as that of Lot 2, and modern materials were also found in this lot. Several large cobbles became visible ~ 45 cm BGS, some of which form a rectilinear formation in the SE corner of EU A.

Note refs 2005-18-12

Op/SubOp/Lot: 04/15/4 Ex. Unit A Size (NxL) 1 X 1 mSite: El Paraiso/S-001Str Str. 2Initial Lot? NoPrev. lot 04/15/3Next lot 04/15/5Initial elevations: NW 1010.40 NE 1010.38 SW 1010.40 SE 1010.47Final elevations: NW 1010.22 NE 1010.25 SW 1010.22 SE 1010.24Depositional significance clayey layer below humusSoil type clayeyMunsell/Color dark brown

Drawings \_\_\_\_\_

Contents ceramics (modern & ancient),  
toba stone, glass sherds,  
stone piece with holePhoto/Digital 04-15-4 EU A**Description/Sketch (with measurements):**

This lot represents the compact, clayey soil layer directly below the humus that can clearly be seen in the soil profile of EU A. Many large pebbles and cobbles are scattered through the lot (from road construction). In terms of artifacts, this lot is a mix of modern and ancient materials, although the former decreases in frequency towards the end of the lot. The size of the materials also increases ~~the~~ <sup>as one</sup> goes further below the ground surface.

Note refs 2005-18-12, 13, 14

Op/SubOp/Lot: 04/15/5Ex. Unit ASize (NxE) 1 X 1 mSite: El Paraíso/S-001Str Str. 2Initial Lot? NoPrev. lot 04/15/4Next lot 04/15/6Initial elevations: NW <sup>81</sup> 1010.22 NE <sup>83</sup> 1010.25 SW <sup>81</sup> 1010.22 SE <sup>81</sup> 1010.24Final elevations: NW 1010.06 NE 1010.04 SW 1010.06 SE 1010.06Depositional significance continuation of clayey layer below humusSoil type clayeyMunsell/Color medium brown w/  
yellowish tye

Drawings \_\_\_\_\_

Contents ceramic (modern and ancient),  
glassPhoto/Digital 04-15-5 EU A**Description/Sketch (with measurements):**

A continuation of Lot 4, this lot contains the same type of soil, albeit <sup>in</sup> a lighter, more yellowish shade. This soil forms a very compact layer that is almost free of artifacts and contains few pebbles. Directly below this lot is the substructure of the plaster floor, which is seen as a level layer of medium sized pebbles ~ 4-5 cm in diameter.

Note refs 2005-18-14, 15

Op/SubOp/Lot: 04/15/6 Ex. Unit A Size (NxL) 1 x 1 mSite: El Paraiso/S-001 Str Str. 2Initial Lot? No Prev. lot 04/15/5 Next lot 04/15/7Initial elevations: NW 1010.06 NE 1010.04 SW 1010.06 SE 1010.06

Final elevations: NW \_\_\_\_\_ NE \_\_\_\_\_ SW \_\_\_\_\_ SE \_\_\_\_\_

Depositional significance Floor substructure - YDE floorSoil type — Munsell/Color —

Drawings \_\_\_\_\_ Contents \_\_\_\_\_

Photo/Digital 04-15-GEUA,  
EU A (Detail-1,2)**Description/Sketch (with measurements):**

This lot is the substructure of a plaster floor that has not been preserved. The substructure consists of an evenly laid layer of medium sized pebbles approximately 4-5cm in diameter each. Given the homogeneous nature of the substructure and lack of any distinguishing features within it, a sketch of the excavation floor (terminus of EU A) will not be attached.

Note refs 2005-18-14, 15

Op/SubOp/Lot: 04/15/7 Ex. Unit B Size (NxEx) 1 X 1 mSite: El Paraíso / S-004 Str Str. 2

Initial Lot? No Prev. lot 04/15/6 Next lot 04/15/8

Initial elevations:	<del>10</del>	118	<del>10</del>	18	<del>10</del>	18		
	NW	1010.77	NE	1011.05	SW	1010.79	SE	1010.97
Final elevations:	<del>10</del>	aa	<del>10</del>	18	<del>10</del>	18		
	NW	1010.67	NE	1010.65	SW	1010.74	SE	1010.69

Depositional significance surface of EU BSoil type loamy, with sandy lenses Munsell/Color medium brownDrawings \_\_\_\_\_ Contents plastic, ceramic

Photo/Digital \_\_\_\_\_

**Description/Sketch (with measurements):**

This lot is a wedge-shaped matrix meant to level the surface of EU B. Due to nearby road construction, EU B, in its original state, is higher in elevation than EU A. Lot 7 mostly consists of modern construction fill; the soil is very moist and slightly sandy. Few artifacts were recovered from this lot.

Note refs 2005-18-15, 16, 17



Op/SubOp/Lot: 04/15/8 Ex. Unit B Size (NxL) 1 X 1mSite: El. Paraiso / S-001 Str \_\_\_\_\_Initial Lot? No Prev. lot 04/15/7 Next lot 04/15/9Initial elevations: NW 1010.67 NE 1010.65 SW 1010.74 SE 1010.69Final elevations: <sup>52</sup>NW 1010.35 <sup>52</sup>NE 1010.35 <sup>53</sup>SW 1010.34 <sup>53</sup>SE 1010.34Depositional significance construction fill layerSoil type loamy Munsell/Color medium brownDrawings \_\_\_\_\_ Contents ancient ceramic, toba,Photo/Digital 04-15-8 EU B glass**Description/Sketch (with measurements):**

This lot mainly consists of construction fill from the adjacent road; the fill is primarily large cobbles, some dressed, and transitions into smaller pebbles (~6cm in diameter) approximately 45 cm BGS. Although the lot contains modern fill, the excavation of this lot exposed the facade of a wall starting ~22 cm BGS. The wall is composed of a row of large, dressed cobbles\* and two rows of smaller, dressed cobbles below. This wall runs along the eastern edge of EU B and is oriented N-S. \* disputed by Marcello

Note refs 2005-18-17, 18

PAREP 2005 LOT FORM

Excavator 18

Date 15/6/2005

Op/SubOp/Lot: 04/15/9

Ex. Unit B

Size (NxEx) 1 X 1 m

Site: El Paraiso/S-004

Str Str. 2

Initial Lot? No

Prev. lot 04/15/8

Next lot 04/15/10

Initial elevations: NW 1010.35 NE 1010.35 SW 1010.34 SE 1010.34



Depositional significance

Soil type clayey

Drawings

Op/SubOp/Lot: 04/15/10

Ex. Unit B

Size (NxEx) 1x1m

Site: El Paraiso/S-001

Str Str. 2

Initial Lot? No

Prev. lot 04/15/9

Next lot 04/15/11

Initial elevations: NW 1010.06

NE 1010.07

SW 1010.06

SE 1010.08

Final elevations: NW \_\_\_\_\_

NE \_\_\_\_\_

SW \_\_\_\_\_

SE \_\_\_\_\_

Depositional significance YDE Floor

Soil type \_\_\_\_\_

Munsell/Color \_\_\_\_\_

Drawings \_\_\_\_\_

Contents \_\_\_\_\_

Photo/Digital \_\_\_\_\_

\_\_\_\_\_

\_\_\_\_\_

**Description/Sketch (with measurements):**

This lot is the terminal ~~level~~ of EU B and is a continuation of the substructure described in Lot 6. This lot is directly below ~20 cm of the same yellowish, extremely compact clayey soil seen in Lot 6.

Note refs 2005-18-20

Op/SubOp/Lot: 04/15/11

Ex. Unit C

Size (NxEx) 1 X 1 m

Site: El Paraíso/S-001

Str Str. 2

Initial Lot? No

Prev. lot 04/15/10

Next lot 04/15/12

Initial elevations: NW 1011.15 **NE** 1011.45 SW 1011.06 SE 1011.34

Final elevations: NW <sup>42</sup> 1011.03 NE <sup>38</sup> 1011.07 SW <sup>47</sup> 1010.98 SE <sup>38</sup> 1011.07

Depositional significance surface humus

Soil type sandy

Munsell/Color medium brown

Drawings \_\_\_\_\_

Contents glass, bottle caps, ceramic, brick

Photo/Digital \_\_\_\_\_

**Description/Sketch (with measurements):**

This lot is the surface level of EU C and was excavated in a wedge-shaped manner in order to level the excavation floor. As with the ground surfaces of previous units, the soil is extremely moist and sandy and shows signs of intensive human traffic. Materials recovered were almost all modern waste. Construction fill and roots were abundant in this lot.

Note refs 2005-18-21

PAREP 2005 LOT FORM

Excavator 18

Date 17/6/2005

Op/SubOp/Lot: 04/15/12

Ex. Unit C

Size (NxEx) 1 x 1m

Site: El Paraiso / S-004

Str Str. 2

Initial Lot? No

Prev. lot 04/15/11

Next lot 04/15/13

Initial elevations: NW 1011.03 NE 1011.07 SW 1010.98 SE 1011.07

Final elevations: NW <sup>97</sup> 1010.48 NE <sup>62</sup> 1010.83 SW <sup>42</sup> 1011.03 SE <sup>59</sup> 1010.56

Depositional significance soil layer directly above Wall 1

Soil type loamy

Munsell/Color medium brown

Drawings \_\_\_\_\_

Contents ceramic

Photo/Digital \_\_\_\_\_

\_\_\_\_\_  
\_\_\_\_\_  
\_\_\_\_\_

**Description/Sketch (with measurements):**

This lot directly overlays Wall 1 and consisted of loose, moist loamy soil and an abundance of construction fill (a mixture of medium to large pebbles and cobbles). Few artifacts were recovered from this lot, though the disturbed nature of their context is clear.

Note refs 2005-18-22

Op/SubOp/Lot: 04/15/13Ex. Unit DSize (NxE) 1 x 1 mSite: El Paraiso/S-004Str Str. 2Initial Lot? NoPrev. lot 04/15/12Next lot 04/15/14Initial elevations: NW 1011.45 NE 1011.27 SW 1011.34 SE 1011.20Final elevations: NW 1011.01 NE 1011.05 SW 1011.02 SE 1011.05Depositional significance surface humusSoil type slightly clayey Munsell/Color medium brown

Drawings \_\_\_\_\_

Contents modern waste (glass,  
bottle caps, plastic,  
electrical fuse, etc.)

Photo/Digital \_\_\_\_\_

**Description/Sketch (with measurements):**

The beginning of unit D, this lot contained the remains of a modern trash pit. This pit is situated ~~below~~ an extremely compact, pebbly soil layer (product of road construction) and 7-8 cm of alluvium deposited by Hurricane Mitch. This lot concludes where the soil transitions into a darker clayey layer similar to the clayey layers in previous units. Artifacts recovered consisted of a variety of modern materials.

Note refs 2005-18-24,25

Op/SubOp/Lot: 04/15/14 Ex. Unit D Size (NxEx) 1 X 1 mSite: El Paraiso / S-001 Str Str. 2Initial Lot? No Prev. lot 04/15/13 Next lot 04/15/15Initial elevations: NW 1011.01 NE 1011.05 SW 1011.02 SE 1011.05Final elevations: <sup>90</sup>NW 1010.49 <sup>91</sup>NE 1010.54 <sup>95</sup>SW 1010.50 <sup>91</sup>SE 1010.54Depositional significance clayey layer below humusSoil type clayey Munsell/Color dark brown w/ lenses of light brown

Drawings \_\_\_\_\_

Contents shell, glass, ceramic, tobacco

Photo/Digital \_\_\_\_\_

**Description/Sketch (with measurements):**

This lot is the clayey soil layer below the surface humus, and contains many randomly scattered pebbles and cobbles within its matrix. A PVC water pipe (henceforth designated Cornelius) runs N-S through EU D at ~10 cm east of the western edge of the unit. The eastern facade of Wall 1 is just west of the western wall of the unit. The context of this lot is disturbed, containing a few ~~modern~~ modern artifacts.

Note refs 2005-R-25, 26, 27

Op/SubOp/Lot: 04/15/15

Ex. Unit D

Size (NxE) 1x1m

Site: El. Paraiso/S-001

Str Str. 2

Initial Lot? No

Prev. lot 04/15/14

Next lot 04/15/16

Initial elevations: NW 1010.49 NE 1010.54 SW 1010.50 SE 1010.54

Final elevations: <sup>103</sup>NW 1010.42 <sup>98</sup>NE 1010.47 <sup>102</sup>SW 1010.43 <sup>100</sup>SE 1010.45

Depositional significance continuation of clayey layer below humus

Soil type clayey with some sandy inclusions

Munsell/Color medium/dark brown with lenses of light brown

Drawings \_\_\_\_\_

Contents modern & ancient ceramic, plastic, glass

Photo/Digital \_\_\_\_\_

**Description/Sketch (with measurements):**

This lot consisted of a clayey, compact soil with some cobbles mixed within it. There were several light brown soil lenses in the NW corner of the unit, but otherwise the soil was very homogeneous. More ancient materials appear in this lot than the last; ancient pottery sherds, along with a handle piece, were abundant. The soil transitions into a darker brown color towards the end of the lot.

Note refs 2005-18-27, 28



Op/SubOp/Lot: 04/15/16Ex. Unit DSize (NxEx) 1 X 1 mSite: El Paríso/S-001Str Str. 2Initial Lot? NoPrev. lot 04/15/15Next lot 04/15/17Initial elevations: NW 1010.49 NE 1010.54 SW 1010.50 SE 1010.54Final elevations: <sup>120</sup>NW 1010.25 <sup>119</sup>NE 1010.26 <sup>122</sup>SW 1010.23 <sup>122</sup>SE 1010.23Depositional significance continuation of clayey layer below humusSoil type clayeyMunsell/Color dark brown

Drawings \_\_\_\_\_

Contents ceramic sherds (modern and ancient)

Photo/Digital \_\_\_\_\_

**Description/Sketch (with measurements):**

This lot consists of dark brown clayey soil that contains more moisture and fewer tumble rocks than the previous lot. The first 10 cm of the lot contained a high concentration of ancient ceramic sherds, most with red finish on one side. ~10 pieces of bone and a tooth were recovered from the first 10 cm of this lot, and appear to belong to a large canine. Overall, the soil is very homogenous and almost free of inclusions.

Note refs 2005-18-28, 29, 30

Op/SubOp/Lot: 04/15/17 Ex. Unit D Size (NxE) 1x1mSite: El Paraiso/S-001 Str Str. 2Initial Lot? No Prev. lot 04/13/16 Next lot 04/15/18Initial elevations: NW 1010.25 NE 1010.26 SW 1010.23 SE 1010.23Final elevations: <sup>127</sup>NW 1010.18 <sup>124</sup>NE 1010.21 <sup>127</sup>SW 1010.18 <sup>125</sup>SE 1010.20Depositional significance YDE floor w/ plaster lensSoil type clayey Munsell/Color medium brownDrawings \_\_\_\_\_ Contents one pottery sherd!

Photo/Digital \_\_\_\_\_

**Description/Sketch (with measurements):**

This lot contains the YDE floor substructure, a lens of the original plaster floor (seen as traces of light brown soil) and a few centimeters of the clayey layer directly above it. This soil was surprisingly sterile and contained only one pottery sherd. An unresolved problem is the fact that the floor substructure is ~10 cm above that in EU A and B.

Note refs 2005-18-30, 31

Op/SubOp/Lot: 04/15/18 Ex. Unit E Size (NxEx) 1X1mSite: El Paraíso/S-001Str Str. 2Initial Lot? No Prev. lot 04/15/17 Next lot 04/15/19Initial elevations: NW 1011.27 NE 1011.42 SW 1011.27 SE 1011.33Final elevations: <sup>38</sup>NW 1010.86 <sup>38</sup>NE 1010.86 <sup>37</sup>SW 1010.87 <sup>38</sup>SE 1010.86Depositional significance surface humus, modern trash pitSoil type loamy/silty/clayey Munsell/Color medium → light → medium brown

Drawings \_\_\_\_\_

Contents glass, tile, plastic

Photo/Digital \_\_\_\_\_

**Description/Sketch (with measurements):**

The surface layers of EU E, this lot includes the surface humus, silty alluvium deposited by Hurricane Mitch, a modern trash pit and the clayey soil beneath the pit. An exceptionally clear soil profile ~~exists~~ exists on the north wall of this unit. Although the surface layer was very pebbly (construction fill), the other soil layers are very homogenous with only a few scattered cobbles and pebbles. Artifacts recovered mainly consist of modern refuse.

Note refs 2005-18-32, 33

Op/SubOp/Lot: 04/15/19Ex. Unit ESize (NxEx) 1x1mSite: El Paraiso/S-001Str Str. 2Initial Lot? NoPrev. lot 04/15/18Next lot 04/15/20Initial elevations: NW 1010.86 NE 1010.86 SW 1010.87 SE 1010.88Final elevations: <sup>110</sup> NW 1010.14 <sup>11a</sup> NE 1010.12 <sup>111</sup> SW 1010.13 <sup>110</sup> SE 1010.14Depositional significance clayey soils down to YDE floorSoil type clayeyMunsell/Color medium to dark brown

Drawings \_\_\_\_\_

Contents bones, ceramic sherds, (ancient and modern), glass, tile, construction material

Photo/Digital \_\_\_\_\_

**Description/Sketch (with measurements):**

This lot contains all the soil layers between the end of the trash pit to the surface of the YDE floor. These are a ~50 cm layer of medium brown clayey soil with a reddish hue, a ~30 cm layer of darker brown, coarser and less clayey soil and ~5-10 cm layer of reddish brown clayey soil. Materials recovered are very similar to those found in the previous lot. Contrary to expectations, I did not find the platform facade of structure 2 in this lot.

Note refs 2005-18-33-37

Op/SubOp/Lot: 04/15/20

Ex. Unit F

Size (NxEx) 1x1m

Site: El Paraiso/S-001

Str Str. 2

Initial Lot? No

Prev. lot 04/15/19

Next lot 04/15/21 (1011.24)

Initial elevations: <sup>+10</sup>NW 1011.36 <sup>+10</sup>NE 1011.36 <sup>+7</sup>SW 1011.31 <sup>+11</sup>SE 1011.35

Final elevations: <sup>-29</sup>NW 1010.95 <sup>-32</sup>NE 1010.92 <sup>-29</sup>SW 1010.95 <sup>-27</sup>SE 1010.97

Depositional significance road ballast, silty alluvium, trash pit  
 Soil type sandy → silty → clayey Munsell/Color medium → light → medium brown

Drawings \_\_\_\_\_

Contents glass, plastic, tile, shells

Photo/Digital \_\_\_\_\_

Description/Sketch (with measurements):

This lot comprises the surface layers of EU F, the sixth unit excavated in this sub-op. The first layer, ballast from road construction, measures ~22 cm in depth from the unit surface and contains densely packed pebbles and cobbles within a sandy, loose soil. The next layer is ~8 cm of fine, silty soil deposited by Hurricane Mitch. The modern trash pit appears immediately below the silty layer, as in previous units. Materials recovered are exclusively modern waste.

Note refs 2005-18-37, 38

Op/SubOp/Lot: 04/15/21

Ex. Unit F

Size (NxEx) 1X1m

Site: E1 Paraiso/S-004

Str Str. 2

Initial Lot? No

Prev. lot 04/15/20

Next lot 04/15/22

Initial elevations: NW 1010.95 NE 1010.92 SW 1010.95 SE 1010.97

from SW corner of

Final elevations: NW 1010.15 NE 1010.37 SW 1010.21 SE 1010.40

EU F 10.11.24

Depositional significance clayey layers <sup>containing tumble</sup> below trash pit

Soil type clayey

Munsell/Color medium brown <sup>medium -> dark -> medium</sup>

Drawings \_\_\_\_\_

Contents brick, ceramic, glass

Photo/Digital \_\_\_\_\_

Description/Sketch (with measurements):

This lot mainly consists of tumble from Str 2. (ranging in size from large pebbles to large cobbles, some angular) within three separate soil layers. The first is a medium brown clayey soil ~ 55 cm deep, followed by a ~ 25 cm deep layer of yellowish black, less clayey soil that ~~is~~ increases in depth the further west one goes. The last layer is a 7-10 cm layer of medium brown red tinged clayey soil. Artifacts recovered were very few and similar to what was found in previous units. Cobbles above the floor are densely concentrated and increasingly angular.

Note refs 2005-18-38-42

Op/SubOp/Lot: 04/15/22

Ex. Unit G

Size (NxEx) 1 X 1m

Site: El Paraiso/S-004

Str Str. 2

Initial Lot? No

Prev. lot 04/15/21

Next lot 04/15/23

Initial elevations: NW 1011.36 NE 1011.23 SW 1011.39 SE 1011.19

Final elevations: NW 1010.97 NE 1011.00 SW 1011.00 SE 1010.96  
-32                      -29                      -29                      -33

Depositional significance surface layers: road ballast, modern tumble

Soil type clayey

Munsell/Color medium → dark brown

Drawings \_\_\_\_\_

Contents shell, glass, toba

Photo/Digital \_\_\_\_\_

**Description/Sketch (with measurements):**

This lot contains a 8-10cm thick layer of road ballast, ~10 cm layer of silty alluvium and tumble (possibly modern). A line formed by cobbles runs N-S through the center of the unit. The fill is poorly sorted and many pieces are sub-angular or angular. An abundance of shell was recovered in this lot, along with a few pieces of glass and toba.

Note refs 2005-18-43,44

Op/SubOp/Lot: 04/15/23 Ex. Unit G Size (NxEx) 1 x 1mSite: El Paraiso/S-001 Str. Str. 2Initial Lot? No Prev. lot 04/15/22 Next lot 04/15/23Initial elevations: NW 1010.97 NE 1011.00 SW 1011.00 SE 1010.96Final elevations: NW 1010.26 NE 1010.28 SW 1010.21 SE 1010.23  
-74 -72 -79 -73Depositional significance modern tumble phase, sterile soilSoil type clayey Munsell/Color medium → dark brown

Drawings \_\_\_\_\_

Contents brick, ceramic

Photo/Digital \_\_\_\_\_

## Description/Sketch (with measurements):

This lot consists of a 25-30 cm layer of modern tumble (due to road construction?) followed by a layer of sterile soil. Few artifacts were recovered from this lot, mostly fragments of brick. The clayey soil between the rocks is loose and clayey, and the soil beneath the tumble layer is more compact. Directly below the sterile soil is an earlier tumble phase with stones that are almost certainly from Structure 2.

Note refs 2005-18-44, 45, 46



Op/SubOp/Lot: 04/15/24

Ex. Unit H

Size (NxEx) 1x1m

Site: El Paraiso / S-001

Str Str. 2

Initial Lot? Yes

Prev. lot 04/15/23

Next lot 04/15/25

Initial elevations: NW 1011.34 NE 1011.67 SW 1011.30 SE 1011.56  
-33 -37

Final elevations: NW 1011.24 NE 1011.28 SW 1011.21 SE 1011.25  
-43 -37 -46 -42

Depositional significance surface humus, tumble (fill)

Soil type silty Munsell/Color medium brown w/ reddish hue

Drawings \_\_\_\_\_

Contents shell, glass, brick

Photo/Digital \_\_\_\_\_

**Description/Sketch (with measurements):**

This lot is a wedge-shaped cut of unit matrix that is meant to level the surface of EU H, which is situated upon a rise. Soil from this lot is loose, silty and medium brown and interspersed with a dense concentration of tumbled fill. Artifacts were scarce in this lot and were mainly shell, brick and glass sherds. The soil and stones on the eastern edge of EU H is very unstable, <sup>which</sup> ~~is~~ resulted in a partial collapse on the eastern side during excavation.

Note refs 2005-18-46, 47

Op/SubOp/Lot: 04/15/25

Ex. Unit H

Size (NxEx) 1X 1m

Site: El Paraiso / S-001

Str Str. 2

Initial Lot? No

Prev. lot 04/15/24

Next lot 04/15/26

Initial elevations: NW 1011.24 NE 1011.28 SW 1011.21 SE 1011.25

Final elevations: NW 1010.91 NE 1010.98 SW 1010.92 SE 1011.03  
-76 -69 (on rock) -75 -64 (on rock)

Depositional significance tumble (fill)

Soil type loamy clay

Munsell/Color medium brown

Drawings \_\_\_\_\_

Contents glass, shell, brick

Photo/Digital \_\_\_\_\_

tumble stones

**Description/Sketch (with measurements):**

This lot is a continuation of the tumble seen in the previous lot, and consisted of sub-angular and angular stones within a loose, medium brown loamy clay. The context of this fill layer is disturbed since modern waste (a child's shoe, glass bottle sherds) was found within it. At the end of this lot, a cluster of stones that appear to be from the facade of Str. 2 were found on the eastern edge of the unit.

Note refs 2005-18-47

Op/SubOp/Lot: 04/15/26

Ex. Unit I

Size (NxEx) 1x1m

Site: El Paraiso / S-001

Str Str. 2

Initial Lot? Yes

Prev. lot 04/15/25

Next lot 04/15/27

Initial elevations: NW 1011.67 NE 1012.03 SW 1011.56 SE 1012.15

Final elevations: NW 1011.59 NE 1011.57 SW 1011.57 SE 1011.61

Depositional significance surface humus

Soil type loamy Munsell/Color medium brown

Drawings \_\_\_\_\_

Contents shell, glass, cow bones, brick, tile

Photo/Digital \_\_\_\_\_

**Description/Sketch (with measurements):**

The surface of EU I contains exposed tumble, light vegetation and loose, medium brown loamy soil. Recent human activity in the area of the unit is shown by the presence of modern refuse such as tile, brick and glass. There is also a high concentration of shell in this lot. Sub-angular/ angular stones are randomly scattered throughout the lot and several pockets of loose soil ~~is~~ are also found within it.

Note refs 2005-18-52

Op/SubOp/Lot: 04/15/27

Ex. Unit I

Size (NxL) 1 X 1 m

Site: El Paraíso / S-001

Str. 2

Initial Lot No

Prev. lot 04/15/26

Next lot 04/15/28

Initial elevations: NW 1011.67 NE 1012.03 SW 1011.56 SE 1012.15

Final elevations: NW <sup>-114</sup> 1011.41 NE <sup>-62</sup> 1010.89 SW <sup>-108</sup> 1011.42 SE <sup>-61</sup> 1010.95

Depositional significance ~~tumble layer above step~~

Soil type ~~loamy~~ → clayey

Munsell/Color ~~yellowish dark brown~~ → reddish medium brown

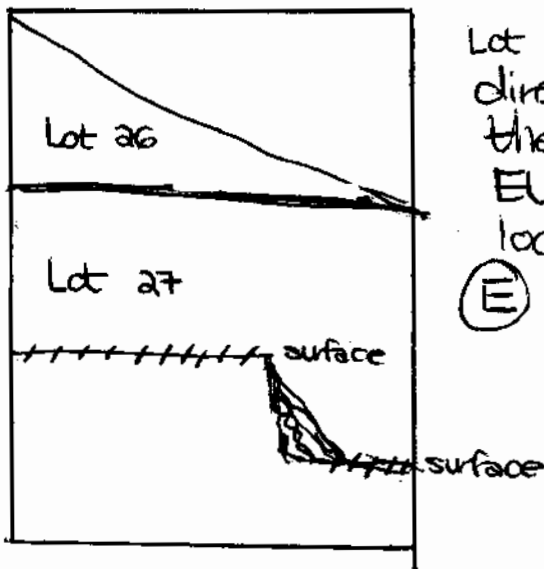
Drawings

Contents ~~tile, brick, shell~~

Photo: Digital

Description/Sketch (with measurements):

(W)



Lot 27 contains the tumble layer directly above the two steps that are partially found within EU I. The matrix was a loose loamy soil interspersed with randomly located tumble stones. ~5 cm above the step surfaces, the soil transitions to a clayey, medium brown type. Artifacts recovered were almost all modern, reflecting the unit's disturbed context.

Note refs 2005-18-53, 54

Op/SubOp/Lot: 04/15/28

Exc. Unit J

Size (N x E) 1 x 1m

Site El Paraíso / S-001

Str. 2

Initial Lot: Yes

Prev. lot 04/15/27

Next lot 04/15/29

Initial elevations NW 1012.03

NE 1012.67

SW 1012.15

SE 1012.83

Final elevations: NW 1011.44

NE 1012.44

SW 1011.51

SE 1011.34

-123

-23

-110

-33

Depositional significance exposed tumble, surface humus, mixed soil loamy -> clayey dark brown -> ard tumble

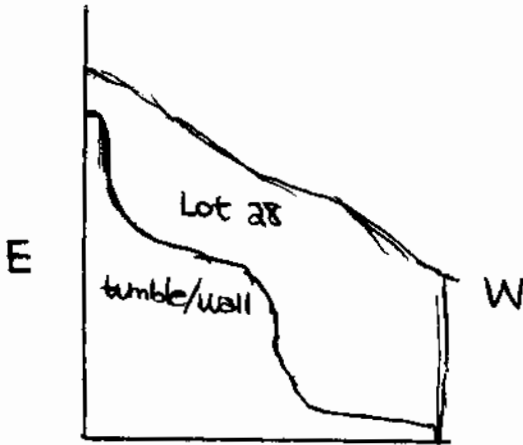
Soil type Munsell/Color medium brown with reddish hue

Drawings

Contents no artifacts recovered

Photo/Digital

Description/Sketch (with measurements):



Lot 28 includes all tumble and soil above the wall/tumble remaining at the end of the lot, which cannot be excavated further due to uncertainty over the orientation and nature of features within the unit. Soils in the unit were a dark brown loam transitioning to a medium brown clay that was very loosely packed. No artifacts were recovered from this EU.

Note refs 2005-18-56-59

Op/SubOp/Lot: 04/15/29

Ex. Unit K

Size (N x E) 1 x 1 m

Site: El Paraiso / S-001

Str. Str. 2

Initial Lot Yes

Prev. lot 04/15/28

Next lot 04/15/30

Initial elevations: -28  
 NW 1011.56      -3 NE 1011.59      -54 SW 1012.10      SE 1012.19

Final elevations: -60  
 NW 1011.59      -48 NE 1011.71      -56 SW 1011.63      -58 SE 1011.61

Depositional significance exposed tumble, surface humus

Soil type loamy

Munsell/Color dark brown

Drawings \_\_\_\_\_

Contents glass shards, one piece ceramic

Photo/Digital \_\_\_\_\_

Description/Sketch (with measurements):

This lot is the surface <sup>layer</sup> of EU K, which consisted of randomly distributed tumble and loosely packed, medium brown loamy soil. The context of the unit is disturbed, given the modern materials recovered.

Note refs 2005-18-60

Op/SubOp/Lot: 04/15/30 Ex. Unit K Size (NxF) 1 X 1mSite: El Paraiso / S-001 Str. Str. 2Initial E. ~~No~~ No Prev. lot 04/15/29 Next lot 04/15/31Initial elevations: NW 1011.59 NE 1011.71 SW 1011.63 SE 1011.61Final elevations: NW 1011.41 NE 1011.56 SW 1011.42 SE 1011.51  
-78 -68 -77 -68Depositional significance tumble/soil mixture, plaster floorSoil type loamy → clayey Munsell/Color dark → medium brown

Drawings \_\_\_\_\_

Contents shell, glass

Photo/Digital \_\_\_\_\_

## Description/Sketch (with measurements):

This lot is a continuation of the previous lot down to the level of the plaster floor, which was a continuation of that seen on the southern side of EU J. Soil in the unit transitions to moist, medium brown clayey soil ~ 60cm BGS, though this soil remains as loosely packed as the loamy soil above it. Few artifacts, all modern, were recovered.

Note refs 2005-18-61

Op/SubOp/Lot: 04/15/31Ex. Unit LSize (NxE) 1 x 1 mSite El Paraíso / S-001Str. 2Initial Lot YesPrev. lot 04/15/30Next lot 04/15/32Initial elevations: NW 1011.61 NE 1012.85 SW 1012.19 SE 1013.07  
-146 -32 -81Final elevations: NW 1011.55 NE 1012.24 SW 1011.55 SE 1012.38  
-152 -83 -152 -61Deposit: nat significance surface humus, tumble/soil mixtureSoil type loamy → clayey Munsell/Color medium → dark brown

Drawings \_\_\_\_\_

Contents none

Photo/Digital \_\_\_\_\_

## Description/Sketch (with measurements):

This lot represents the soil/tumble mixture existing above the architectural feature in EUL, the second unit excavated in the lateral expansion running W-E 1 m south of the main trench. Soil in this unit was predominantly a medium brown, clayey type that was loosely packed within the dense concentration of tumble stones, which ranged in size from medium pebbles to large cobbles. No artifacts were recovered from this unit. Both a well-preserved plaster floor and the edge of a terrace are present in the unit below

Note refs 2005-18-62-04 the tumble/soil matrix.



Op/SubOp/Lot: 04/15/32

Ex. Unit M

Size (NxL): 1 x 1m

Site: El Paraiso/S-001

Str: Str. 2

Initial Lot: Yes

Prev. lot 04/15/31

Next lot 04/15/33

Initial elevations: NW 1012.85

NE 1013.42

SW 1013.07

SE 1013.53

Final elevations: NW 1012.05

NE 1012.16

SW 1012.04

SE 1012.09

NE corner  
EU P

-11

-215

-19

-17

Depositional significance: surface humus, fill / soil mixture

Soil type: loamy → clayey

Munsell/Color: dark → medium brown

Drawings: \_\_\_\_\_

Contents: no artifacts recovered

Photo/Digital: \_\_\_\_\_

Description/Sketch (with measurements):

The third unit in the lateral extension of 04/15, this lot represents the tumble and loose, clayey soil above what we believe to be the latest version of Structure 2's construction. The surface of EU M is a thin, 10-20cm. layer of dark brown loamy soil that transitions into a loose, moist, somewhat sticky medium brown clayey soil. Tumble is densely concentrated throughout the unit and there are some courtes within the matrix. No artifacts were recovered in this lot.

Note refs: 2005-18-65-89

Op/SubOp/Lot: 04/15/33

Ex. Unit N

Size (N x E) 1 x 1.3m

Site: El Paraiso/S-001

Str. Str. 2

Initial Loc: Yes

Prev. lot 04/15/32

Next lot 04/15/34

Initial elev. (meters) NW 1013.51 NE 1014.04 SW 1013.58 SE 1013.89

Final elevations: NW 1013.46 NE 1013.51 SW 1013.40 SE 1013.51  
-58 -53 -64 -53

Depositional significance surface humus, tumble/soil mixture

Soil type loamy Munsell/Color dark brown

Drawings

Contents one shell, three pieces  
tile

Photo/Digital

## Description/Sketch (with measurements):

This lot represents the surface layer of EU N, the fourth unit in the lateral expansion of the main trench. Unlike the surfaces of EU K, L and M, the humus layer, seen as a ~50 cm thick layer of dark brown, loamy soil, is well defined and substantial. Furthermore the concentration of tumble stones is lower than in previous unit surfaces. Artifacts, though few in number, were one shell and three pieces of tile.

Note refs 2005-18-69-71

PAREP 2005 LOT FORM

Excavator 18

Date 13/7/2005

Op/SubOp/Lot: 04/15/34

Ex. Unit N

Size (NxEx) 1 x 1.3m

Site: El Paraíso / S-001

Str Str 2

Initial Lot? No

Prev. lot 04/15/33

Next lot 04/15/35

Initial elevations: NW 1013.46 NE 1013.51 SW 1013.40 SE 1013.51

Final elevations: NW 1011.99 NE 1011.89 SW 1011.98 SE 1012.02  
 -152 -162 -163 -149

Depositional significance Fill layers

Soil type clayey Munsell/Color medium brown

Drawings \_\_\_\_\_ Contents none

Photo/Digital \_\_\_\_\_

**Description/Sketch (with measurements):**

This lot contains two distinct fill layers. The first is a ~30 cm thick layer of medium brown, clayey (although with a significant amount of gritty inclusions) soil with a medium concentration of stones. Below this layer is a ~50 cm (exposed) layer with little soil and loosely packed cobbles measuring ~20cm in ~~the~~ length. Also exposed were a row of three large, flat cobbles running N-S about 40cm from the east unit wall. The presence of the fill layer and fill wall suggest the presence of a room wall nearby

Note refs 2005-18-71, 72, 75-78

EU N.

Op/Subop/Lot: 04/15/35 Ex. Unit 0 Size (NxE) 1x1m

Site El Paraíso/S-001 Str Str. 2

Initial Lot: Yes Prev. lot 04/15/34 Next lot 04/15/36

Initial elevations: NW 1014.04 NE 1014.42 SW 1013.80 SE 1014.36

Final elevations: NW 1013.96 NE 1014.01 SW 1013.81 SE 1013.85  
-48 -41 -56 -57

Depositional significance humus layer w/ tumble

Soil type loamy Munsell/Color dark brown

Drawings Contents none

Photo/Digital

## Description/Sketch (with measurements):

This lot, the surface humus of EU 0, contained a mixture of dark brown, organically rich <sup>loamy</sup> soil and randomly deposited tumble (mostly medium to large cobbles). A possible architectural feature exists on the east unit wall and extends west for ~ 30 cm, and is seen as a row of stones with three stacked stones near the SE corner. Directly below this lot is a fill layer (densely packed, medium brown clay and cobbles) dating to the latest version of construction.

Note refs 2005-18-79

Op/SubOp/Lot: 04/15/36

Exc. Unit 0

Size (N x E) 1 x 1 m

Site: Ei Paraiso/S-001

Str: Str. 2

Initial Lot No. \_\_\_\_\_

Prev. lot 04/15/35

Next lot 04/15/37

Initial elevations: NW 1013.96 NE 1014.01 SW 1013.81 SE 1013.85

Final elevations: NW 1013.29 NE 1013.77 SW 1013.43 SE 1013.89  
-113 -85 -99 -53

Depositional significance Fill layer

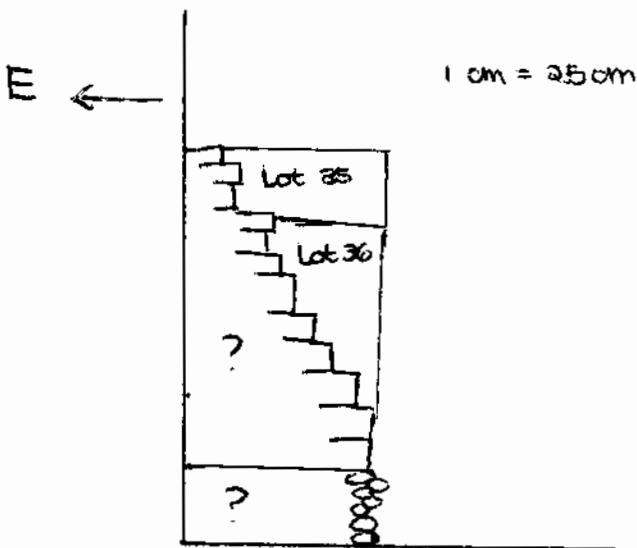
Soil type clay Munsell/Color medium brown

Drawings \_\_\_\_\_

Contents no artifacts recovered

Photo/Digital \_\_\_\_\_

Description/Sketch (with measurements):



As shown in the sketch, this lot is a wedge-shaped matrix lying above two stepped columns of flat, rectangular stones. A fill layer, the soil in the lot was a medium brown clay with pebbly inclusions. A dense concentration of stones existed among the clay. No artifacts were recovered from this lot.

Note refs 2005-18-79, 80

Op/SubOp/Lot: 04/15/37

Ex. Unit P

Size (NxL) 1x1m

Site: El Paraíso/S-001

Str. Str. 2

Initial Lot Yes

Prev lot 04/15/36

Next lot 04/15/38

Initial elevations:

NW

1014.42

NE

1014.69

SW

1014.36

SE

1014.58

Final elevations:

NW

1014.29

NE

1014.31

SW

1014.33

SE

1014.27

-40

-38

-36

-42

Depositional significance

surface humus

Soil type

loamy

Munsell/Color

dark brown

Drawings

Contents

ceramic shards, glass, shell,  
animal tooth and bones

Photo/Digital

## Description/Sketch (with measurements):

This lot, the surface humus of EU P, consisted of organically rich, dark brown loamy soil and randomly scattered cobbles. Unlike other units in the lateral extension, the surface of EU P yielded a variety of artifacts, including ceramic sherds, glass, a shell and some animal remains. Towards the end of the lot, we began to see a layer of cobbles, signifying the beginning of the fill layer.

Note refs 2005-18-81

Op/SubOp/Lot: 04/15/38 Ex. Unit P Size 1x1m

Site: El Paraiso / S-001 Str. 2

Initial Lot No Prev. lot 04/15/37 Next to —

Initial elevations: NW 1014.29 NE 1014.31 SW 1014.33 E 1014.27

Final elevations: NW 1012.53 NE 1013.75 SW 1012.81 E 1013.68  
-178 -56 -150 -68Depositional significance ~~is~~ fill/soil mixture

Soil type clayey Munsell/Color medium brown

Drawings \_\_\_\_\_ Contents no artifacts recovered

Photo/Digital \_\_\_\_\_

## Description/Sketch (with measurements):

This lot represents the matrix to the west of the facade (terrace?) that begins ~40cm BGS about 20cm east of the east unit wall. This construction extends downward for over a meter (we ended its excavation at an arbitrary elevation). The fill/soil mixture was very similar to that found in previous units and was also quite unstable since it was very loosely packed.

Note refs 2005-18-82-84

Op/Subop/Lot: 04/15/39 Ex. Unit H Size (N x E) 1 x 1 m

Site El Paraíso / S-001 Str Str 2

Initial Lot No Prev. lot 04/15/25 Next lot 04/15/26

Initial elevations: NW 1010.91 NE 1010.98 SW 1010.92 SE 1011.03

Final elevations: NW 1010.62 NE 1010.92 SW 1010.63 SE 1010.92  
-105 -75 -104 -75Depositional significance tumble above stepsSoil type clayey Munsell/Color medium brownDrawings Contents none (artifacts)Photo (Digital) tumble stones

## Description/Sketch (with measurements):

This lot is a thin layer of clayey, medium brown soil and tumble stones that lies directly above the steps exposed in EU H. No artifacts were recovered from this lot.

Note refs 2005-18-48