

2003

EPV 001 Bell Field Notes 2003

Ellen Bell

Follow this and additional works at: <https://digital.kenyon.edu/honduras>



Part of the Archaeological Anthropology Commons

Recommended Citation

Bell, Ellen, "EPV 001 Bell Field Notes 2003" (2003). *Four Valleys Archive*. Paper 96899.
<https://digital.kenyon.edu/honduras/96899>

This Field Notes is brought to you for free and open access by the Anthropology at Digital Kenyon: Research, Scholarship, and Creative Exchange. It has been accepted for inclusion in Four Valleys Archive by an authorized administrator of Digital Kenyon: Research, Scholarship, and Creative Exchange. For more information, please contact noltj@kenyon.edu.

10 Jan 2003

2003-1-1

Project Members:

1 Ellen Bell

2 Marcello Camato

3 Jorge Ros

4 Santiago Morales

5 Lito Lemos

6 Pamela Geller

7 Jonathan Balbo

8 Roberto Romo

9 Acacia Clark

to Yann Desailly-Chanson

Start off the day visiting Doña Ruperta (white house part of the eqn) to get permit to chop the grass on her land at Cafetal - she gave it + said that it might even be possible to cut more coffee (since the price is so low).

Marcello + Lito are off to La Entrada to transfer the car pass. Santiago + I will get the guys chopping at Cafetal + the run errands for the house.

Stopped by El Paraíso - well-chopped - can really see the main structure - looks like the entire circumference + the top were bulldozed.

Found Miguel, Feliberto + Dimas chopping the access road to El Cafetal. Took them over to the main plaza of the site since we now have Doña Ruperta's permission to clear them. They started clean + found both of the pendulums (Bronze tabs painted white + set in cement) at the site. They also reported finding both at El Paraíso the day before.

Walked around with Santiago + found that the area around the site had, in large part, been cleared. Now that coffee prices have continued to fall precipitously (due to the influx of cheap coffee from Vietnam) people are starting to cut down their coffee farms.

2003-1-2

Will head back (Thurs) to map in areas that
can now be seen more easily. Went back to
Site at 3:30 to check progress + bring guys home -
all looked good. (Aous errands in the meantime)

The areas that have been cleared include:

The miles w/ 5-7 + 5-9

The banana field behind 5-02 (5-10)

The forest near 5-06

The area and Chon Mendez's land (5-11)

Wed. June 11, 2003

Went out to La Playa today + find some
sites (5) that do not appear to have been reported
earlier (of course, they were in Guatemala so we can't
really do much with them...). Very muddy (and fun)
day. We arrived in La Playa around noon + with
the very good help of

We went out to see sites people had told us about
+ identified 5 meters. Site, only one (5-203) associated
with a very large rock of regular, nearly circular
depression of approximately the same width + depth (approx. 15-
1.6m). reminds me of a mound in the Selam Valley - will
talk to Bob + Chris about it). Another rock of similar
size but w/o depression was found along the river directly
below the Cupul Stone. Site 203 is directly above (or
the other side) at approx. 100 m. distance.

The Site sketch maps (201 + 5-203) can be found in
the folio pages, the site descriptions are in the database.
The first site (201) was located in a coffee finca
directly across the border of Guatemala (marked by a gate)
It includes 5 sites along a 6th number the road (except
Lito)

S201

2003-1-3

Wed. 11 Jun 2003 (cont.)

S-202

The second site we visited (May 11) included a single recognizable str. under a small mango tree along the fence line that marks the road) in the midst of an artifact scatter. An older gentleman who owns/works the land reported he's seen a bright light that didn't go out but when the area was still in coffee. He saw the light clear a space but he didn't feel anything the next day.

S-203

The third site was located near a lg. mound of cup debris (see survey description)

S-204
205

Sites 204 + 205 were large quantities of large cobbles along the Sth bank of the Quebrada Seca that didn't have much fine but yielded lg. quantities of lg. ceramic fragments - included jar hulls + rims.

A good day - Sods in Quebrada (El Rosario) w/ Jugo Pabon, and of other sites across the river + to the south. Looks like we have part of the North route - well try to fill in the South route as well.

Thursday, 12 Jun 2003

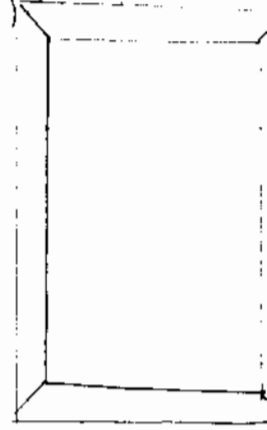
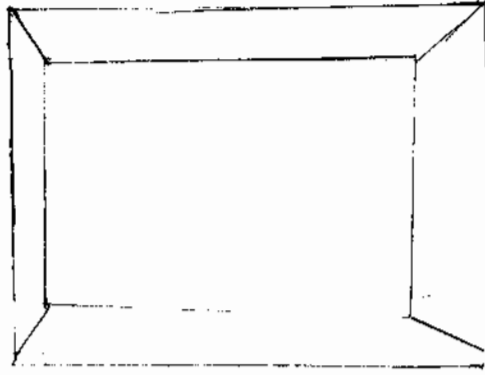
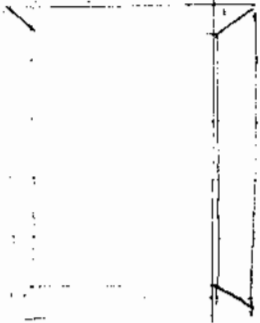
Mapped in nearby - recorded (at midpoint) S-09 + then walked out to check nearby - found site S-6 (1 more mound found). Site + I headed out to the SE (past Guayabal) to look for S. edge of recent. Saturday - I found S-14, a mound + artifact scatter (possibly a ploughed structure) along an old river/quebrada terrace S of Cafetal. The rest of the terrain is flat + (apparently) empty to the south - this may be the S. edge of the settled zone for the part of the valley.

Groundwater Site Near El Rosario

2003-1-4

PAREP Site 201

11 Jun 2003 EED

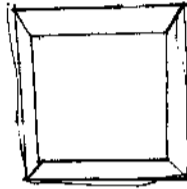
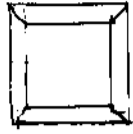


Gradiente Sika near El Rosario

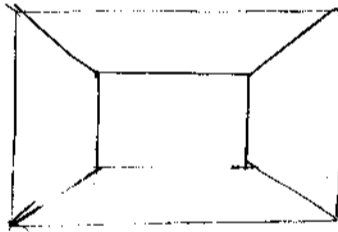
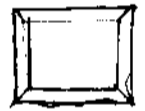
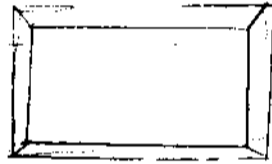
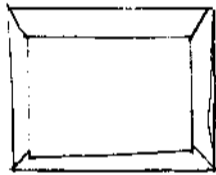
2003-1-5

PARCELA Sika 203

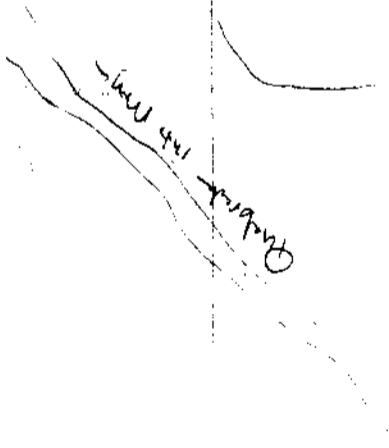
11 Jun 2003 EEB



25m



100m



2003-1-6

S-14

G-12-2003

Santa Fe Escalera mounds

E. Bell

Strs: 1, stone, faced + cobbles

Water - river NE (possibly another creek quarter to the SW
dike - beam

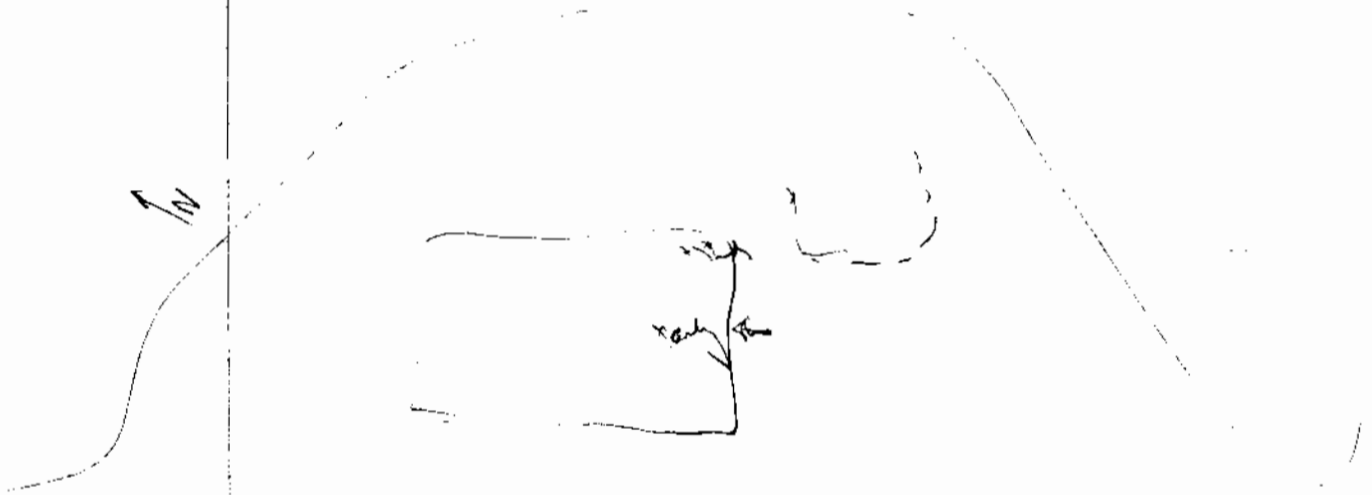
Partly deforested + burned, nearby of lateral mounds

partly clay

but some - unknown

Near old river terrace (German runs N-S approx) 20 m SW of
edge

Artifacts - Gully Stone Single, isolated mound



2003-1-7

Friday, June 13, 2003

Start off the day packing compass + tape maps at El Paraiso. Talk w/ Eldon + Lito about possible transport/trade routes in + out of the valley - many of which are highly visible from the top of Str. 1. (See p. 2003-1-6). These include:

- Nuevo Herman route to Copan - 5-6 hrs. w/ load, plenty of H₂O along the way.
- Los Juncos route to Rio Amurillo + Copan: 9 hrs. to Copan (4 to Rio Amurillo)
- Playon route to Copan: 5 hrs.

Lito reports that his plan to lead off to Copan

Monday, June 16, 2003

Back for Copan w/ Pamela + Jonathan on Sunday. Reunion w/ the Mayor, Regidores, y Alcaldes auxiliares thru my. The mayor introduced everyone, ~~read~~ + read Oscar Cruz's note indicating that we're working under the authority of IANAH. I gave an Aro to the mayor, + Morales talked about the Copan - Quirigua conflict + El Paraiso's role in it. Lito then talked about development possibilities + we answered questions. Morales also talked about what we'd done last year + hoped to do this time.

We're now getting ready to take Jonathan + Pamela out to see the site. as soon as the flat tire on Morales' truck has been repaired. Tire repair, site seen, BBQ enjoyed by all.

Tuesday, June 17, 2003

Out to El Paraiso w/ Roberto + Santiago to sketch the sketch map. Got most of it done on paper - looks like there is a lone mound (in the Evangelical Church lot) to the north, the rest seems to be resolving fairly well - it's a relatively big site, + I imagine that there was a lot more to it (small mounds, etc)

2003-1-8

Tuesday, June 17 (cont) before the consist of the modern town really took off. The Mage settled part centers to hold, with all of the visible station sitting on platforms.

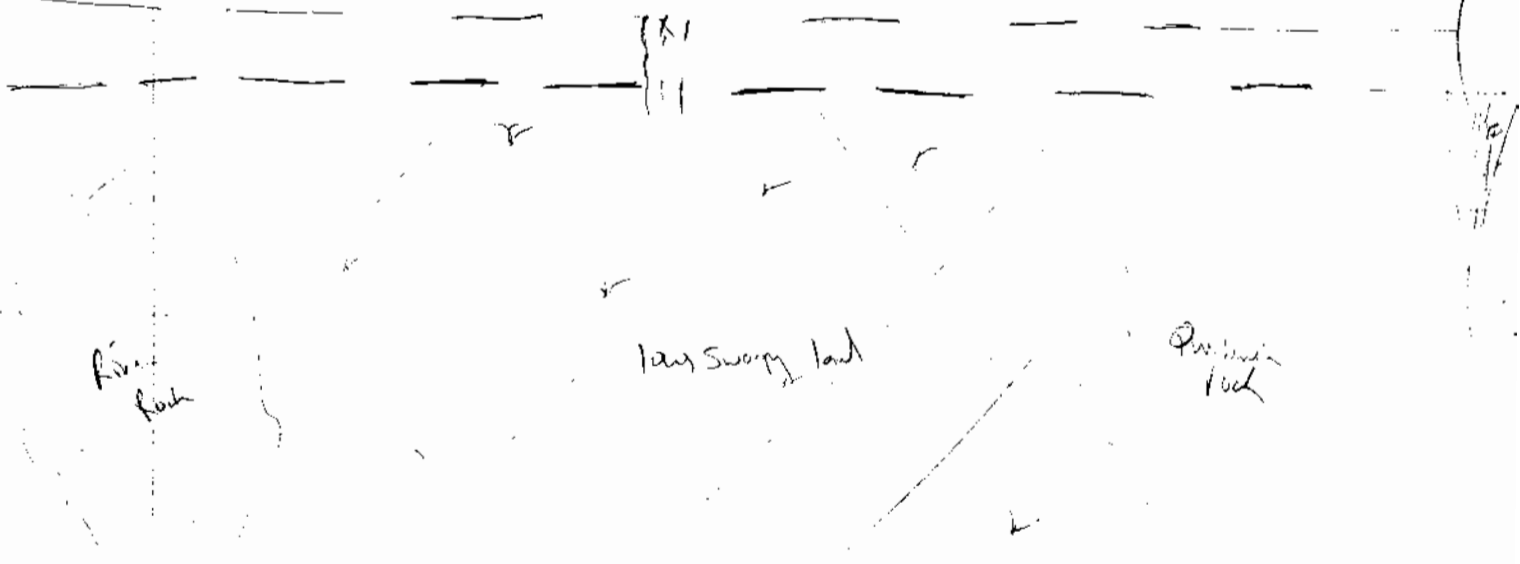
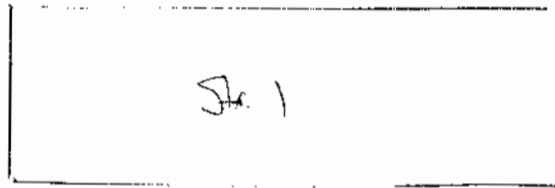
Wed. June 18, 2003

Went to Cop to pick up Nacai + get my stick out all good.

Spent Nacai the site + worked at the pt. conversion system (MAC) on the computer

Thurs. June 19, 2003

At EP County Compass + tape map. Tramped out the str. + the flood zone to the west (produced by the spring the cans and under str. 1. This whole area is a flood zone + included ground for the Okoboko basin - the water source has certainly moved over time. It rained a lot yesterday + the stream has risen quite a bit (MAC had trouble crossing the river)



2003-1-9

Eden suggests that the route to Nueva Herrmín
Herrmín may have been the more passable
El Paraíso ~~to~~ Nueva Herrmín ^{3 1/2 hrs} Copan ^{1 hr} Copan Agave
Should take about 1 day of loads, including incense
rings

El Paraíso ^{3 1/2} Nueva Herrmín ^{1 1/2} Copan ^{1 hr} Copan Agave → c

Water: Ocote, Pita, Mach Cuto, Quebrada de Paro
Sugrundo Nueva Herrmín

Los Juntos site;

EP $\frac{4}{5}$ ~~Río Amillo~~ $\frac{5}{W}$ Copan = 9 hrs.

Calluya from Los Juntos to Río Amillo

LPC - consists of Los Achto (Los Juntos site)

Early Classic - Early part of Late Classic: Copan - Nueva Herrmín

Late part of LC: Swiddson to Río Amillo by Quirigua Carlsbad

Quirigua Park = EP Perito $\frac{9 hrs}{N}$ La Piedad $\frac{2 hrs}{N}$ Quirigua

don't travel Quirigua

2 day message cycle between Quirigua + Copan

← Guatemala

Looking West

to Quirigua

← road to Nueva Herrmín

2003-1-10

19 June 2003 (cont.)

Str. 1 seems to have been cut quite a bit to the N. as well - the two houses that he directly N of the building + the W side of the platform. It looks like the porch (now) was cut when the houses were built as well as when the tracks came in.

20 June 2003

Saturday + Roberto to Tegan + Cap + EP map. Was suspended for the rest of the week. Made a plan w/ Sam + intellectual issues so I took the car out to do the recite map. All was well - map in min terrain in NW sector of site (St. 108 + 109) SA 5110 W of 5108 near LN of 516. Filled in top in marshy field NE of 5108. Lito in St. Rosa to get spent permission to keep way with us + to let Estrada to fix the truck which had been broken yesterday in the robbery (stole 2 backpacks + a camera - Lito's - but all was recovered). Walked in at end of day - Lito back by 9:00p.

21 June 2003

Mac back in achi. Cont'd survey, mapped in 5-16, 17, 19. Went to see 5-18 (Major + Lito told us about it - they had been informed by ~~him~~). Very large earth concrets - Grayish RPE settled path + an elverth Ballcourt - by exact. Smith visited to draw a sketch map - by str. some partially too

0.808 1.123 315m²
0.077 4.856

2003-1-11

19 June 2003

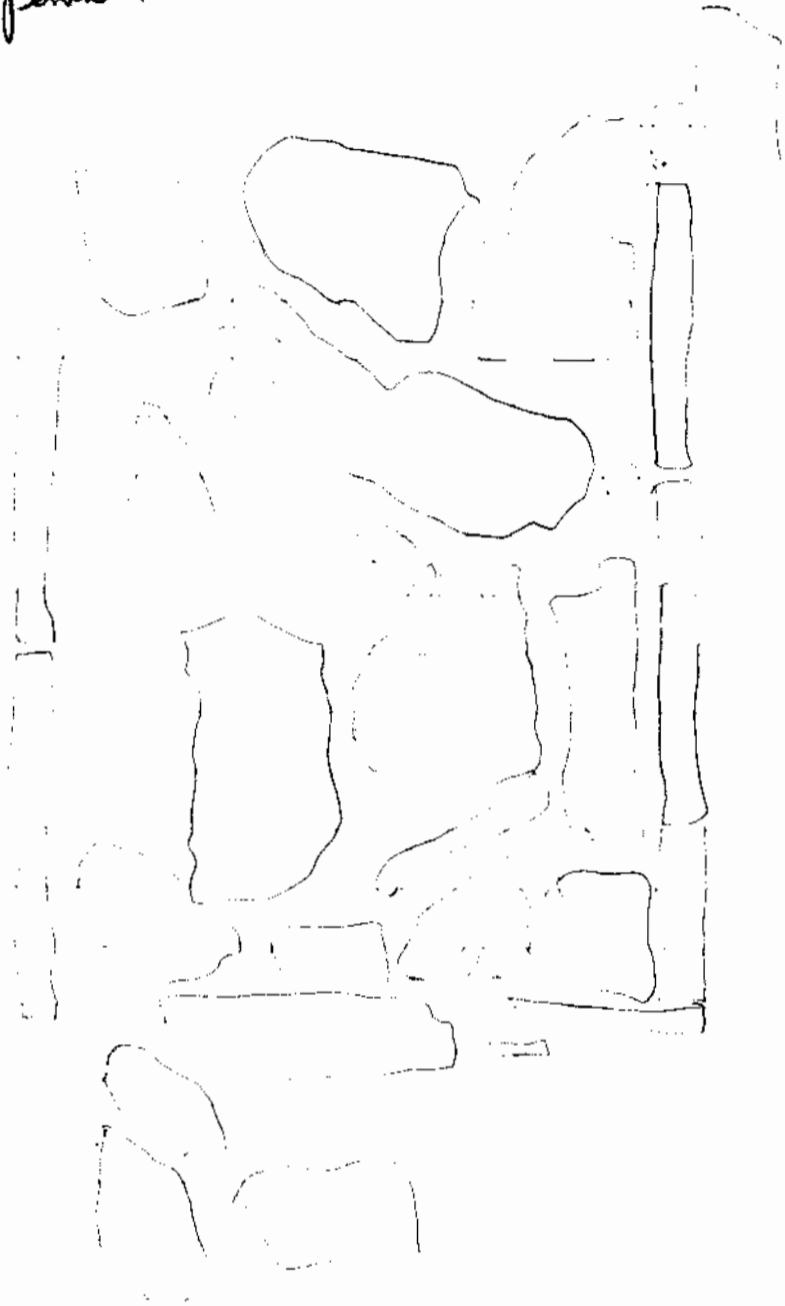
Jojo Martin ~~Menjita~~ Menjita

Find substrate with clay spherules for garden on 18 June

Also find parent



Stone parent



2003-1-12

19 Jun 2003 (cont.)

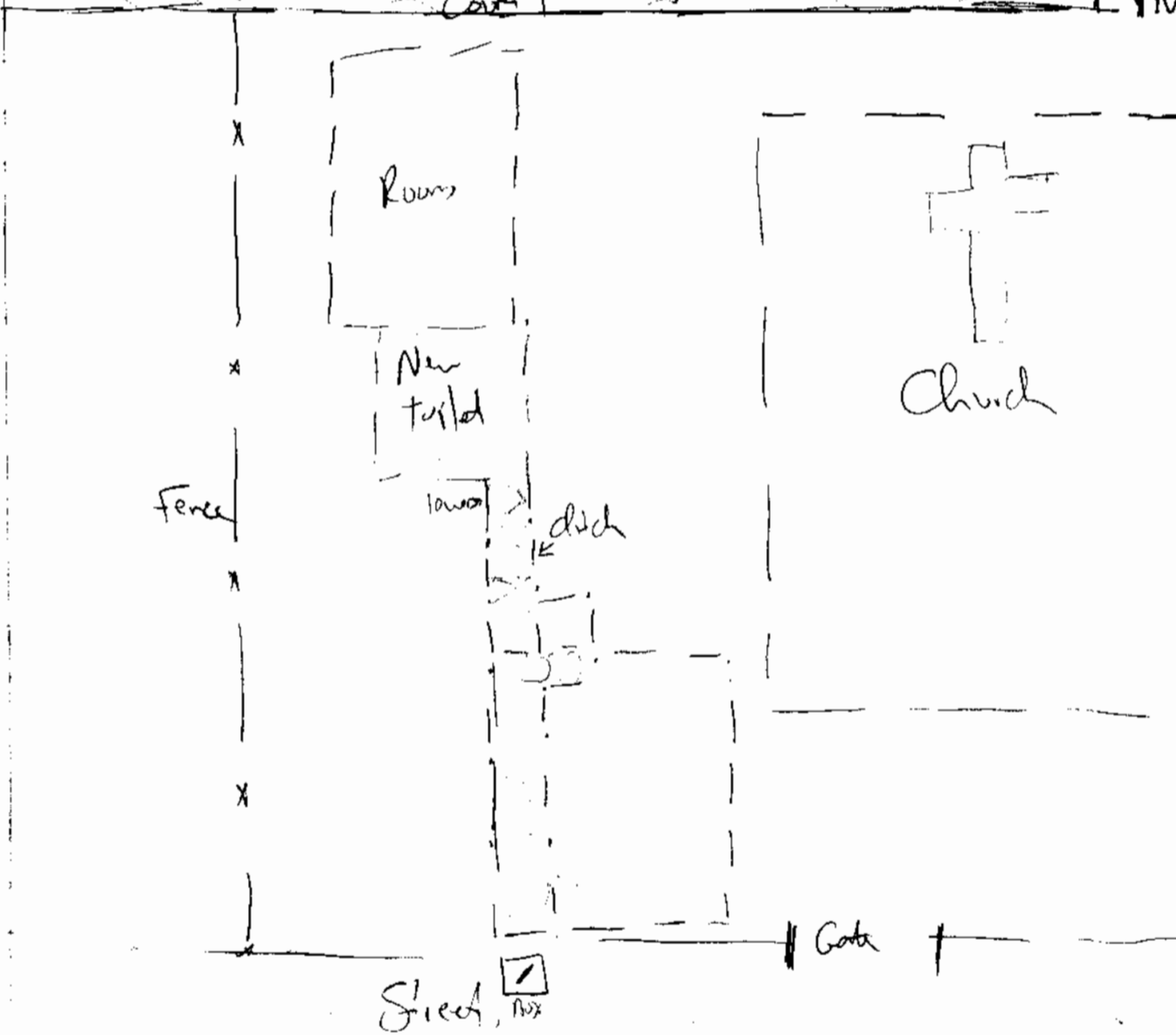
Don José Martín Méndez

Quito in the a 1 yr for her - looks a little strong
also a camel health & 2 prevention study colls
were bird & roof etc. No dengue.

23 June 2003

In the yard in front of the 7th day advices church where they are digging a shallow channel to pass a pipe (designed by PROREP) for a new toilet. They were going to place it between behind the church in the N half of Court 1, but we were able to persuade them to change plans.

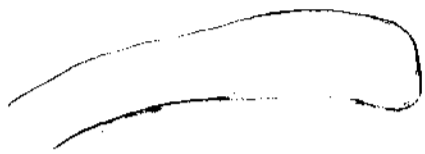
The shallow trench hit what appears to be a stone pavement - marked w/ cement - & outlined in cement walls in the N. quadrant, but continues to hit a stone implement. approx. 20-30 cm below the surface further S - across the path toward Court 1. Work to minimize damage, but some will inevitably result. See sketch



2003-1-14

23 June (Cont.)

The excavations yielded no prehistoric materials from inside the house/corral, but a terrace shell did come out from the trench to the South of the San Mateo house w/ the Canal-mudbank pavement.



red-brick part, fine w/ lg. inclusions, micaceous, red ext. surface

Continuing the trench toward the street (the box for the sewer connection) we find that the emplantillado (lower) continues & appears to underlie that part together w/ cement associated w/ a clayey reddish-yellow soil. This layer was approx. 29 cm thick at the surface near the fence.

The fill of this str. appears to be clay & soil - very fine rocks are present to the exposed depth (see sketch).
Mendinguez took notes + Domingo

The clay includes inclusions of red brick + flakes of carbon. The emplantillado is not very formalized further South, although there are indications that it continued. This level may relate to the box-shaped emplantillado found on Fr. St. in José Antonio Merizán zone, just E of the trench (see sketch).

Juan + Roberto (who are helping the guys dig) have just found remains of an early str. in the trench. It was approx. N-S. Some 1.5 m S of the fence. The wall was drawn + photographed before it was removed by the church workers (Salazar archaeologist).

2003-1-14

28 June 2003 (cont.)

Another section of the empty tubules has been revealed close to the fence (6.3m S of fence). This appears to have continued to the wall when cut across & slightly above it.

N 6.3m
S of fence

30 cm by

8.9m S of fence

Cerium collected, including what may be an early stage:

23 June 2003 (cont.)

2003-1-14



highly burnished on its inner - int. surface is also slightly darkened.

Summary: A small excavation carried out by members of the 7th Day Adventist Church on Plot 2, Sedges, revealed buried architecture. The excavation was begun in order to place the tub (donated by PROREP) for an outdoor toilet. The toilet had been placed initially in Court 1 (as a latrine) & the congregation were persuaded to move it.

On 22 June PROREP staff (E. Bell, S. Escher, & R. Ramsey) supervised excavations & documented all recognized architectural features. These included a modern brick floor & foundation, a stone emphythelate 30 cm high & a wall oriented at 10° (E of N). All of the prehistoric features were sealed in a clayey, yellowish-orange soil level that was distinct from the dark brown loam above - in which the modern brick floor was placed.

Coins included both modern (clim plates, ^{glazed} stoneware) & ancient (Achaemenid, Sassanid, Byzantine) material. All were collected as Op. 1/1/1. The wall was well-defined (if only 2 courses were visible) while the emphythelate was slightly less organized.

All features were removed when visible in the trench as construction continued. The soil reality of visible - sealed.

2003-1-15

24 Jun 2003

Conty work at EP - mapping B today as we're really trying to figure out what's going on here. Main issues:

1. W edge of patio 4 - does it mark the level w/ a low step-down or was it initially higher w/ the rocks by been removed? A definite step down from the S edge

2. N edge of patio 4

25 Jun 2003

Mon. Jun 30, 2003

2003-1-16

Begin excavate at EP (S-01) w/ Pamela + Jonathan Supervising
1 pit each.

Op. 4/3/1- located on N. edge of platform that crosses
patio 1 to trace out architectural lines + wall down the ramp.
Supervised by Pamela Geller, dig by Angel + Masad
Began by clearing out area - a lot of loose rock was present -
then dug out a 2x2m pit aligned w/ the remains of
a stone line visible on the surface.

Op. 4/4/1- located on the W edge of ~~the~~ platform 1 along
the E side of Str. 1. This pit will seek to resolve
the question of whether the wall stands.

QI-568 Marlon Avenas - objects found in field near
the Pila Riu (in the field area before climbing the hills) on
the way to Las Peñas. He reports a mound near the old
Roman bridge - will have to check it out. The artifacts include:
1 hatchet
1 obsidian macroblade w/ cortex
1 rock that may be sculpted - looks like a bird head.

op 4/4

Continue down into the middle layer - brownish-grey clay - which is
mixed and the rocks tumbled from the wall above. The tumbled
is mixed in w/ the middle sediment + it's possible that it was
either displaced during the hurricane or that they were in place

Mon. June 30, (Cont'd)
but filled in by the sediment.

2003-1-17

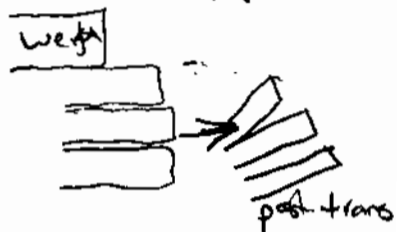
2200-

Leant out a third unit (Op. 4/5) in the West part of the pad
- A will be started tomorrow aft- we have 2 more workers.

Op. 4/3

- Pamela chisel the lot (Op. 4/3/2) + continues down. The rock line
on the surface (blot in by mac + Santiago) does continue to the
E + it may exhibit characters similar to those P+E described for
the LMV - the rocks tilt up + back, rather than slump down
+ forward as if they were counter weighted.

This line may also include the remains of
stairs - shallow risers - that may have
provided access to the top of the platform.



Op. 4/4

Jon continues down in RA of the wall - it may stop @ 2m b
In Op. 4/4/1 he had press of tubes, suggesting that there may be
some sculpture on the building + adding weight to my suggestion
that the sculpture in the old photo was important for Copan (or
the cop- area).

Tues. July 1, 2003

Op. 4/3

Pamela is drag the line (S edge of P side of PH. 1) in her
unit.

Op. 4/4

Jon continues down in RA of the wall to see if it continues

Op. 4/5

I'm staying with unit in the place approx. 4m E of
Op. 4/4 (Jon's unit). This unit is intended to confirm the
stratigraphy and lot you + act as a guide for Jon's work
closer to Str. 1

Tues July 1, 2003 (cont.)

2003-1-18

The unit was laid out on the site grid (in contrast to those plan near architect). Coordinates + opig elevations are as follows:

	N	E	Z	
NEC	846.00	468.00	1010.09	NEC
SEC	844.00	468.00	1010.07	SEC
NWC	846.00	466	1010.03	NWC
SWC	844.00	466	1010.01	SWC

Take out the 1st level by the (10) topsoil + all of the clay sediment left by match in 1998. Then will proceed down to look for the plaster floor set last year.


Felipe Gutierrez } work op- 4/4/5 today
Henrique Cantarero }

10:00-

Op- 4/3

Paul wants to trace out the wall line, now work on the S edge of the pit to see if there is a seal line - possibly the basal line of the S edge of the N side of Pth: 1.

Op- 4/4

Jon has chiseled lots (now in 4/4/2) + is trying out a possible pair of sculpture  tube. Jon is fairly quiet.

lot of tube blocks - I'm worried if there might not be a source a little closer than the Copacabana valley... of course it could also represent a massive masonry in the transport of materials.

It looks like the wall might end 2 courses below the surface but it's possible that it sits on a terrace floor continue to the E. + below.

Two - July 1, 2003 (cont.)

2003-1-19

Op. 4/3 Still cutting down - no seats (or pre-Columbian artifacts) as yet.

Op. 4/4 Job B cutting to final stone. The wall goes to the end 30 m long, but it may be on a narrow terrace/andén that is principally composed of 2 lg. flat stones + a Cap-style stone cut block



The possible price of sculpture is directly w of the Cap-style stone.

Op. 4/3 Panels contain traces of the lines - the lower (5) line of larger stones seems to be either tumbled from a superstr. above or a later (poorly built or poorly preserved str.) Panels has also E) table (a very sm. price) in Op. 4/3

Op. 4/3 In photo show at 52-59 m long. Much larger = 0-15 m by few artifacts. Chul took + took photos on Paul's digital camera - PIREP camera - Exp. 13-15

Op. 4/3 - wall continues - additional line of flat rocks was tumbled (drawn + pulled). line runs at 13 feet - change angle/direction at approx 8 m into the top. See notes re excavator prohibitions.

Tues July 1, 2003 (cont.)

2003-1-20

Excavation Points:

Str. 1:

W side: Presence/absence of present terrace to Pt
A rain feature
Access - stairs? Central? stand to S?

Plat. 1, N side - fill base of wall (step back 1/2-1 m)
Follow base of wall to E (shut trench)

Plat. 1, S side orientate of Str. 4+5
orientate of Str. 9,
trash off E or W side of Str. 9

Str. 2 - confirm architectural style - S side

Plat. 2 S side - feet N face of Str. (Don Juan's garden)

Str. 10 - Salvage? (puff in sewer now)
check old looted areas?

JHRAH
 222-1468
 222-3470
 Com - JHRAH
 990-5973 cell

2003-1-21

Op 04 / SOP 05

	N	E	Z
NEL	846.00	468.00	1010.08
DEC	844.00	468.00	1010.07
NWC	846.00	466	1010.03
DWC	844	466	1010.01

JH 1
 * Quince tube Kiriich facade - tube?
 - date? (Am or post?)
 K 80, imported?

Tube - imported or blocks
 Canal in site
 producing sm. chips - for fixing these

date - Sculpted style (best available)
 Ceramics - but do cop. tubs hold

If pre 18 rabbit - Cop. dated
 if post 18 rabbit - Quince date - copy by Cop.
 artifacts a rare material (no new construction)
 Cop. by Peter 15's Ring

PH 1, N side - terraces (E side)?, stairs? By the pond or all fit
 Access

Ch corner - JH tube to E

PH 1, S side - south of Str. 415
 " " + track to Str. 9

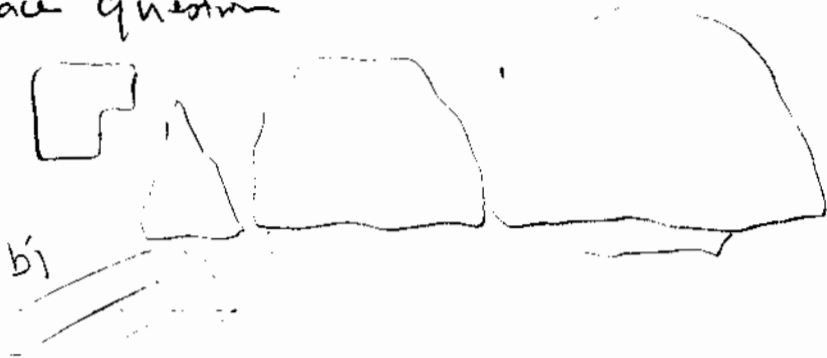
JH 2 - S. side, wood house yard

Wed. 2 July 2003

2003-1-22

Op. 4/3 Back on-site to continue pits
Panda continues to follow wall down

Op. 4/4 Jim trying out possible by surface + try to resolve
terrace question



Op. 4/5 took floor sample + an cutting down to Casajo level,
setty plate aside to replace at approx. the same level.
when back to site.
The plate itself is quite unusual. It is very yellow in
color, the surface is neither smooth nor level, + there are
some inclusions. Felicitas reports that there is a lime source
nearby + that people continue to burn lime near the
quebrada (on a small scale). So, it may not have been
necessary to import + this could easily represent an attempt to
copy things seen at Cop + the necessary materials to replicate
them exactly. Of course, the construction technique is correct —
Casajo below Strucco.

Wed. July 2, 2003 (cont.)

2003-1-23

Clearly out pits dug into S side of Str. 10 (in the solar of the Iglesia Centroniana, W side of the park). They cut SH trench into the SEC to run sewerage + potable water lines (in same trench) to the Church. The sewer line runs out to the Street W of Str. 10 while the water line runs to the South.

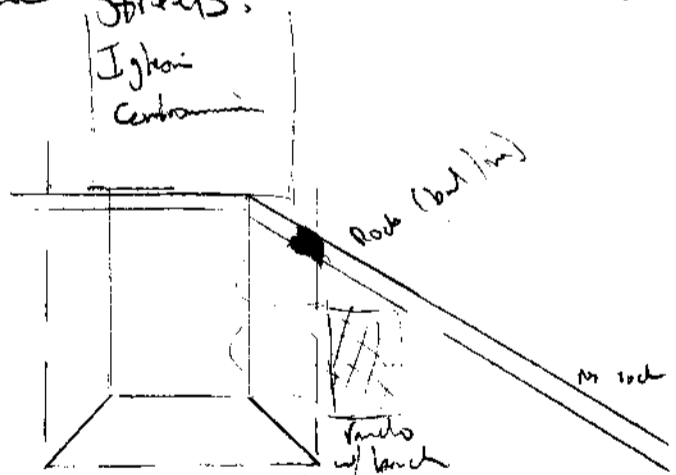
The trench cuts into the S. side of the Str. at an angle, exposing a rubble field that extends down (S) to the lands. w/ a cement floor + bench under the mango tree. A concentration of rock at the base of the lg. spring tree suggests that this was the location of the best corner of the S wall (w/ records well of the pits. we took at the SWC (the lower of the two) + the edge of the west-most water trench.

The person installing the pipes reported that no artifacts were found here (none was visible in the back dirt - cursory inspect). He did say that human bone had been found in the Street W of the Str. when the municipal sewers were installed.

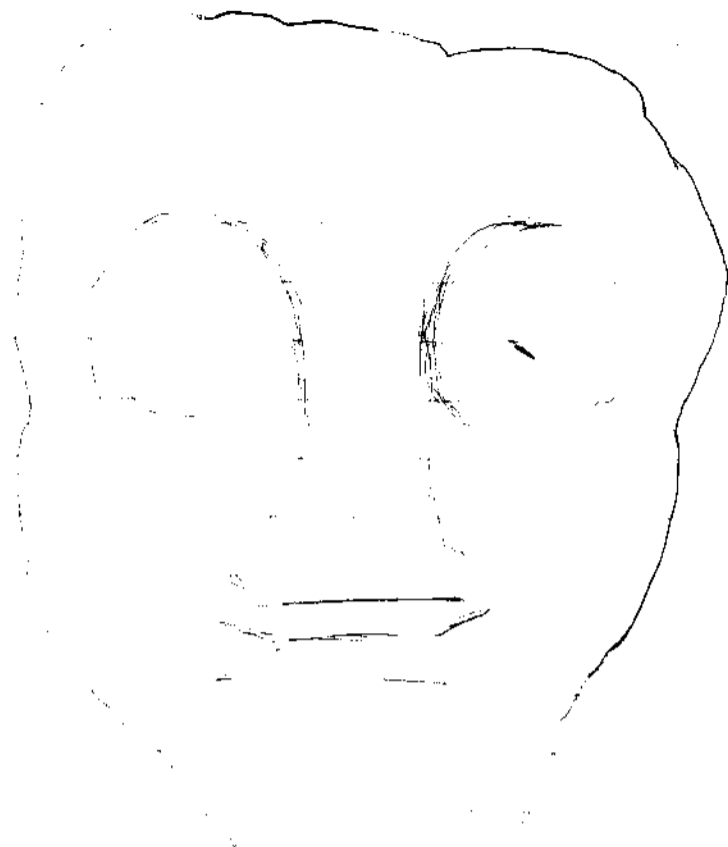
The SH trench that runs along the W edge of the Church shows that the Str. did indeed continue under the Church building. No indicators of the best corner of the W side of the Str. is visible in the same trench - the stones continue in the same concentration (low) throughout.

No rock was visible in the trenches that continued through the flat area out to the Streets.

Photos: 16-21



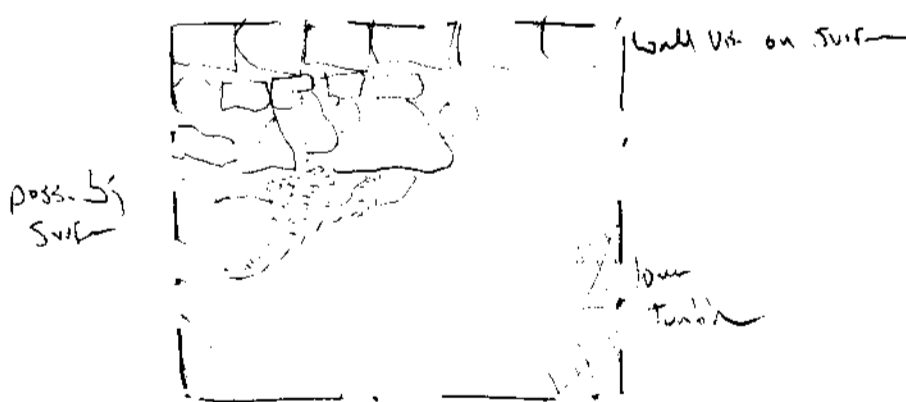
Op 4/4



1:1 Sketch Op 4/3/3-1 to be sculpted face and face-down in this pit.

The face was found (face-down) adjacent to large tumbled rock. It is made of tober + while the eyes are well-formed the mouth is simply cut.

Don has hit an area below the big blocks that look very tumbled but much like a terrace. He's pretty sure it all is + with the flat bulky tumbled.



Wed. 2 July 2003 (cont)

2003-1-24

op. 4/5

Clear lot 4/4/3 (plate on floor) + are the Conty down high the Cascajo level. We find a section that includes rocks concentrated together in much the same way as the paint bucket to the E mounds. Interpret find while tramping through Solars at the beginning of the season. It looks like the same release from which Cryptolyma (?) or that quartzite-like material forms (for ground water) to bind the floors to one another even as the Anaco disappears.

Photos of op 4/5/3 - find: 22-24

op. 4/4 (g)

Thoughts on presence of tube - see p. 2001+21

op. 4/5

Conty down high predom / Cascajo to reach really high Cobble level - should have opened old pit... Found clay down through the Cascajo layer + will now continue into the densely packed Cobble above the layer parent.

op. 4/3

Open an additional 1m x 2m unit to the south to find the edge of the wall. Took it down in two lots (fill part of Sub-op 3) + we see find the floor + base of the wall.

op. 4/4

Find floor at 70 - by in SEC of pit. Clay down to it. 2 tube blades slightly above floor but in center of E m of unit.

op. 4/5

Getty near the stone paint / length at 1.10 - by (NW side) Clay down to it.

Thurs.

3 July 2003

2003-1-25

Mx before by a road/gully stone w/ wear and
the edges photo taken w/ Jon's digital camera (a bit)
and w/ frame supports (3 m by 5 ft) past the Clinim
Jon's camera: # 76-77

Op. 4/5 Cooky down to pond in Op. 4/5/5 - hot water.

Friday 1 July 4, 2003

Maulé, Santiago + Lito (w/ Elda) back from recon in the
Marga Valley (Rio Lirio → EP). Not much settled in the
area they covered - could have been a very fast trade route
w/ few (to no) stops. Also possible that the route continued
more on San Antonio de la Cruz to the NW. Settlement
could have been more plentiful in the pockets carved out
along the quebradas - this is the case for La Peñas + the
site located on Lito's Suroeste land (Prof. Arnoldo). This could
be checked at a later date.

Op. 4/3

Pamela + I took elevations on the rocks that form the S
E of the N. side of Pit 1 + the + Jon are now working
on the ~~profile~~ profile/section drawing. The unit will remain open over
the weekend + we will extend it to the E to catch the main
NEC of the Padis (Padis 1). Floor found at 1.10m by
(1010.02)

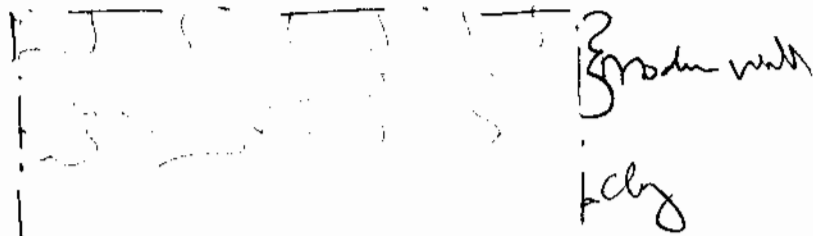
Op 4/4

Jon did not find the wall in the W side of the unit -
it appears to be further in (E) - below the very previously
proposed modern wall that was built on the surface. The
floor is part + well-preserved at 80- by + any of the

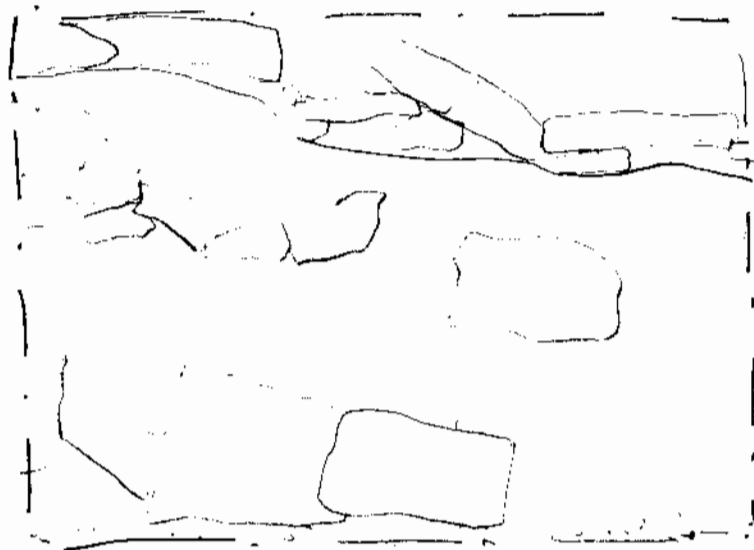
Fridy 7 July 2003 (cont.)

2003-1-26

lg. Tube blocks (w/cores in some cases) appear to be fallen
clutter on the floor.



E Face



broken tube E wall

broken tube

N Face

It looks like the most probable cause of action is to
do + photograph the pit + then try to get the wall
in further south edge (S edge of ^{East} Str.).

The pit demonstrated the presence of tube (would be to
a small face + cut from block - cap style - w/cores)

- ② the presence of the pits floor
- ③ the absence of a basal line at the N side wall
- ④ the ID of the surface wall as medium.

Fridy
Q. 4/5

4 July 2003

2003-1-27

The PA blocks. We've hit water at
A apps to be used up for a subcrain zone in the
SWC of the pit. I'll draw, photo, & close it this morn.

This pit has denuded that the stratigraphy through the
pit (or at least the W part of it) is the same & that
the missing peat fill episode may have been required to
compensate for/annihilate a steady water table that may have
appeared following the occupation that used the lower site part
(not located in this pit because the water level prohibited further
excavation). The FM episode appears to be been massive &
widespread - It includes boulders/cobbles 0.50 m² as well as small
river cobbles - none of the shaped stones (logs) appear to have been
used.

The plate floor is very yellow in color & sandy. It was thick in
places but spottily thinned the pit. The subfloor was composed of
3m. sized pebbles & this year we found within that the floor
had mineral to form a concreted mass in some areas that is
similar to the sand concrete on the site (goes to ~~the~~ initially thought
to be modern. The level above the floor included a massive
incense of coconut roots which I found along the top surface of the
floor - these were also noted at op. 4/4 & 4/5 a lesser extent
Q. 4/3. The soil above the floor is clayey w/ a thin humus level
The next level up is the clay dumped by Harrison Mitch in 1990
w/ or the humus level above.

Level 1 - Very thin layer of dk hum (WYR 4/3) topsoil that
has found since Mitch (1990). 2 cm thick

Level 2 - ~~dark~~ H. sand, dense clay deposited by Mitch. Fe inclusions, no stone
light brown to grey (2.5/4/2) 10 cm thick

Fri, 4 July 2003 (Wed.)

2003-1-28

Level 3 - buried topsoil horizon. Very thin (1 cm thick) but soil layer. Dark brown - black (10 YR 4/3).

Level 4 - Thin debris on top of plate floor (floor 1). Med. brown (10 YR 4/2), 4-7 cm thick, included flats of stone + small cobbles at the top + bottom.

Level 5 Plate floor. Pale yellow (2.5 YR 7/6) plate floor 5-8 cm thick. Patchy in places.

Level 6 Casco, below floor; - 6-8 cm thick, includes some clots of concentrated material.

Level 7 densely packed cobble fill. Cobbles range in size from 5 cm pebbles to large boulders. All are packed in dk brown clay (10 YR 4/5). The bed is 50 cm thick (excavated to 50 cm - photos - did not reach point).

Water wells up in the SWC at 120 cm bgs.

The cobble/large stone surface was not reached before the water made it impossible to continue digging responsibly.

No architecture (except the floor) visible in the pit. The unit contained the patio structure, acted as a guide for Units Op. 4/3 + 4/4. A fact that groundwater is close to the surface in this area at this time, possibly suggests that the massive cobble filling has been required in response to changing water conditions! We were not able to reach the lower point + look for earlier contexts. We did confirm that water seems to drain to the W in the patio.

Friday 4 July 2003 (cont.)

2003-1-29

Main support set in a camp near E. Linnon
no other artifacts found in associates. The edge has been
marked (just down) red strip. About what work, wanted
to sell main support decided to give Nam finally agreed to
our taking a photo.

Op 4/5 Dean photos, find notes plus Pepsi bottles + flying tape
in the unit prior to back site.

Monday, 7 July 2003

At home for notes - see Tues. 8 July 2003 for update

Tuesday, 8 July 2003

Yesterday was quite a day. We arrived at the site mid
morning & everything took off after that.

We stayed in Cap an extra night because - due to
delays (flat tire, mandrels etc) we weren't able to get to the
site until late afternoon. We decided it was best impromptu
to see the site (Aracis + Yannis 1st trip) & not drive at
night, so we stayed. In the morning we saw jump on
the road - all well. Arrived at home to find that
Maribel's sister had been in the accident near Santa Rita we
saw on Friday - she is doing ok + Maribel was back yesterday
afternoon.

Fr. 8 July, 2003 (cont)

2003-1-30

On site at approx. 10:15 - John + Santiago down Q.4/4 while the rest of us worked on setting pAs + staking tops along the road W of Str. 1. By the end of the day, in the course of doing the W wall of the pA, John + Santiago had located the E wall of Str. 1 - or possibly a step.

The wall is composed of at least 3 courses of large (30-40 - long) laid blocks + is present to (or near) depth) a height of 80-100 - below the base of the modern wall.

The wall appears to follow the arc of the Str. 1 that we were able to project + cut back to the W in the S part of the pA.

The most exciting development is that some blocks of the wall ~~had~~ fallen along the E face of the wall + 11 of them include sculpted elements. The motifs include a scroll, an eye, + various stylized geometric elements. This confirms the presence of Copan-style stone sculpture at El Porazo. All sculpture was drawn (plan + elevation), photographed, + plotted w/ the EDM before being tagged (PPV) + removed.

At the end of the day, John also found a small deposit in the N wall of the Unit. This was left in situ + he is currently copying a small side section to preserve it before being moved.

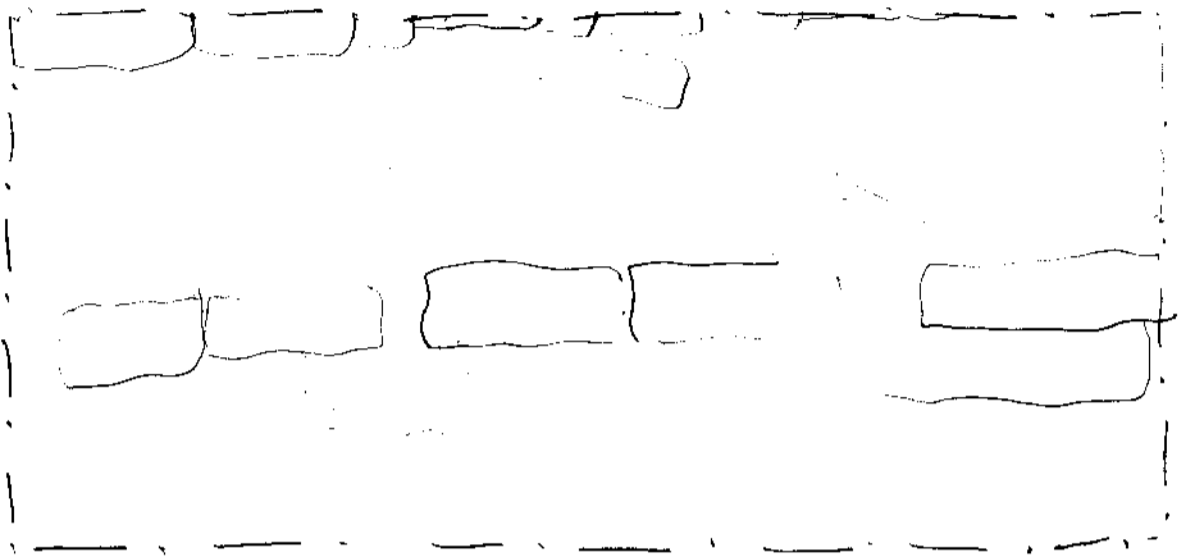
OP 4/3

Costly down in Parla pit below the floor before morning was to patch the corner - impetus to get down to the lower cobble pavement sometime this year, + give floor elements + water patterns this year to be the best opportunity. Angel + Felicitas wish the pit today to moved has gone to La Entrada

Rusty (T. 2003) (cont)

2003-1-31

Op. 4/4 Jim has finished unearthing the final deposits & it looks like a red-on-white jar w/ at least 2 horizontal grey bands that were placed directly on the floor (mixed in/scattered on dark tan clay below a line of flint in the N wall)



Op 4/3 Sky Op. 4/3/5 - cutting down to the S of the wall, below floor to find low-cobble floor.

	SEC	1:10 w/g	85 shls
	SEC	1:11	4 rabs - poss. clt
wall	PWC	1:10S	1 proj. sh
	NEC	1:08	all fm clay side, walls of 5 n of pit
			Also carb - <u>contaminated</u>

Also include Op. 4/3/7 - clay side walls

Op. 4/3/8 Conting below floor 1 in the S lm of unit. Angel + Feliberto working together as Manuel had to go to La Entada for the day. Subfloor appears to be consisted of that observed in op. 4/5 - sm. pebbles mixed w/ H. Cream / Yellow-clay shreds. For artifacts

8 July 2003 (cont'd)

2003-1-32

Q. 4/7 New unit placed S of Q. 4/4 along the E face of Str. 1 to look for the SEC of Part 1. The unit was stopped approx 1m west & will cross-cut the rock wall (which was removed in this area prior to excavation.)
Photos on Jon's camera.
Dinos + Quique working unit. All rock visible in the PIA level appears to be trampled by the rock wall.

Q. 4/3/8 SWC 133.5 - top
SEC 123 m
NWC 129
NEC 123 m

Contents - obsidian flake, 2 shells 1 broken fragment

Q. 4/3/9 Climbing down into the lg. cobble level + hit water at top. Lay the pit before final recording + closure. The water appeared before we were able to reach the lower surface.
Cashed down
Final elements:
NWC 161
NEC 162.2 m
SWC 160.8
SEC 147.4 - top

Q. 4/4 - Full cobble surface at water level w/ guano present on top. Climbing down to Str. 1 - exposed in NW quarter of 2x2 unit.

9 July 2003

2003-1-33

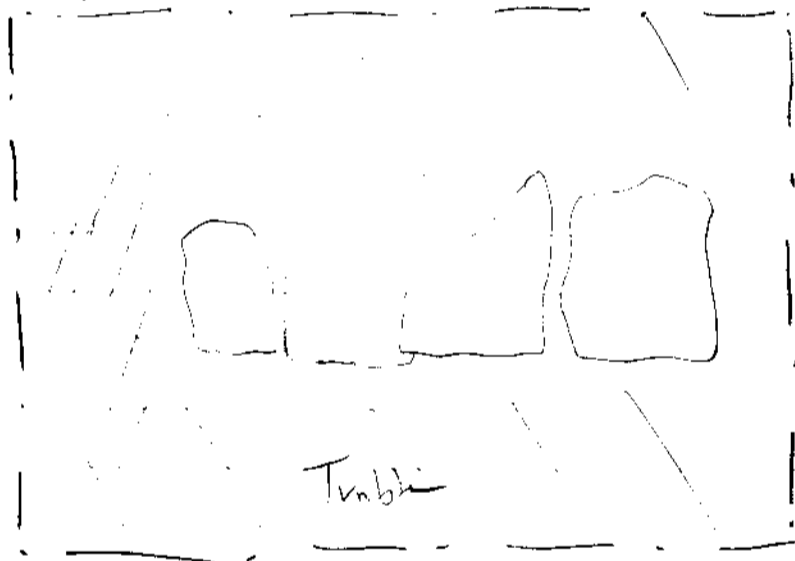
Start in after a good night's sleep + a massive amount of
cleaned the air + cooked dough off quite nicely.

Two new workers:

Wilmar Alexis Orellana
Jose Alfonso Gonzalez Conzeta

This after a 3rd prenatal visit to work because someone else
had told him he was hired. Lito came back + sold the pub.
Jon + Satya drag the wall that was desired of sculpture in
part of it in op. 4/4

9/7/03 fully chiseled the 2nd level of rocks - a very tentative line
has appeared - most likely part of the modern wall visible
on the surface. We'll cut down infra (E) of it to confirm.
A few shreds - including what may be a jar rim have
come out.



9/13/03 on a hunch we continued down a little further
into the water-sealed fill (neatly job, but necessary)
+ found the cobble replacement just below the water level.
Perhaps the cobble surface works to retain water

9 July 2003 (cont)

2003-1-34

Op 4/3/8 (cont) The emphysema is very similar to that of LA year
in op. 4/4 - same construction, plus. It is made of large
flat-laid stones that are arranged below a layer of very
large boulders.

New soil elements - level of cobble surface:

NEC: 179

NXC: 184

SEC: 180

SWC: 184

Op 4/7/11 - Verified that the possible line was no line at all
not even the of the modern wall - and are now remain
tumbled stones throughout the levels. Pedro, Carlos + Quque are
working here today.

Op 4/8/8 tried to plug the holes where the water was coming out,
but to no avail. I'll try a new drain method this afternoon
marking the corners of each stone w/ a flag + then measuring
the flag - will see how it goes! I don't think we'll be
able to get a good photo of A because the water is
rising too quickly - the pit fills as quickly as we're able
to bail it out. A sump pump is the only way, + we don't
have one here... will see about borrowing one.

Op 4/4 Sealing + doing an dry the N wall to include the rocks exposed
as sculpture was built.

Op 4/8/11 Dig pit (2x2 m) approx 1.75 m E of Op. 4/3 (panels)
to look for the ^{NE} corner (interior) of patio 1

slowly

9 July 2003 (cont)

2003-1-35

Wilson + Alfonso work of mound on op. 4/8/11 The wall don't appear to be a well-preserved in the unit, so will go down to the S of it to see if we can catch it lower. We do appear to be getting tumbled for the E ~~well~~ ^{well} of the Patio, but may not be far enough E to get the corner - the road runs directly along the side of the patio/plate.

08-4/7/11 We appear to have found a wall line at the E edge of the unit + will step back to the E to follow it (may backdate)

08-4/4 Closed + back-filled filthy find notes + drawings + photos - didn't want to risk collapse w/ increasing rainfall.

10 July 2003

~~Sketch~~

Sketch off the day well - find (well, Miguel showed us a big nice carved foot of tamar (Acacia is doing it now). The piece was found when he was filling to plant corn (had built hoe). The foot includes a highly-baked ~~shell~~ ^{shell} w/ a cord tie (seems to pass between the 2nd + 3rd + 4th toes). The sketch may include a back design w/ a profile support.

14 July 2003

Bit of a dust up this morning - arrived to find no fuel + all of the guys sitting outside the fence - pits still empty + full of water. Worked at in the end, though.

Met a former EP Peace Corps volunteer who had worked on the initial mapping of Cerro Azul. He was back visiting w/ his wife + kids. (Cont. on p. 2003-1-36)

10 July 2003 (cont.)

2003-1-36

Most of the morning spent looking at the sculpture, searching for more, + getting things ready to go in P2A-2 (Jon's units). We also shot in the wall line in op. 4/7 (which Sutter is now supervising), took an elect. on the cobble surface of Floor 2 + shot elects (where possible) for op. 4/8.

John has now opened ops. 4/10, 4/11 in P2A-2, both along the E side of Str. 9. Op. 4/10 is located to the N, op. 4/11 is located further south, near the area where the sculpted foot was found.

Soil colors for op. 4/3:

Level 2 10 YR 4/3 (grey ch) Level 1 10 YR 3/1 (light)

Level 3 7.5 YR 3/3 (rocks)

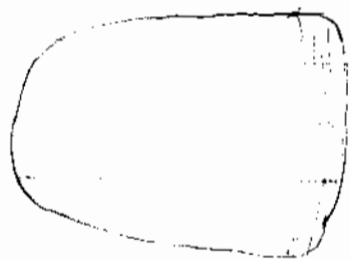
Level 4 7.5 YR 2.5/3 (clay fill or silt)

Level 5 (floor) 10 YR 5/8

Level 6 7.5 YR 3/3 (rocks)

Level 7 Floor 2

Op. 4/7/2 - a small stone hatch (made of the same stone as most of the bldg. but shaped + shaped on the end.



Op. 4/7/2-1 Stone hatch

11 July 2003

2003-1-37

off to a ~~den~~ ~~st~~ - explain a group of school children
whether problem - they decided a fence of the site was in order
will do everything possible to protect mineral's crops.

Op. 4/3 Carlo + Wilmar are backfilling the unit.

Op. 4/4 Shubill partly complete of backfilling.

Op. 4/7 Satya is supervising Dinos + Quique ~~do~~ they cut down in
front of the exposed wall here. So far it's impossible to
tell if it contains dam or not.

Ops. 4/10+11 Jon Curtis in lot 1 of each w/ Beto + Alfonso, + Manuel + An

I'm going to try the sculpture, but had to leave it for the
moment in order to wait for the school children.

Tagging sculpture + ground stone found on the surface yesterday (10/1)
Sculpture ental on PPN shell shell, ground stone gas surface collect
Op - will fill in lot later

1 Metate + 1 Manu tagged.

Tagged + Catalogued PPN - 12 + 25, plus 5 small table top
bagged as surface collect.

Op. 4/7

Santiago + Ca. have confirmed that the wall visited in
4/2/11 was a modern wall (no rods below it + it sits approx. 40-
above the floor which appears at an bsp (date at
SBC).

Fri. 11 July 2003 (cont)

2003-1-38

Op. 4/7 (cont) We drew the wall + photographed it (even though it was modern) before removing it to take the last door to the floor.
No signs of a low wall.

Op. 4/8 possible wall in way to light. lots of cars.

Jorge, Fernando + Cesar came to visit today. They took a look at the toba - mainly the sculpted foot - and were able to say the much of it seemed to have come from El Abra / the La Estada region. They said the following:

White toba = La Estada / El Abra

Purple toba = Santa Rita / Las Mesas

Pink toba = Río Amarillo

Green toba = Capa Valley

So, based on that, we may have stone from all of the above except the Capa Valley, with the majority (not majority, so far) from the La Estada valley.

They were also able to make reasonable identifications of the types of sculpture + CTA toba blocks. We'll plan to go in, take identifications on all available parts, photograph, + tag the sculpture. The same will be done for the blocks, except that they won't all be tagged w/ PPN's (Paraiso Project Numbers). They will be stored for possible consultation.

Fernando also said the blocks may have found a border and a sculpted figure.

14 July 2003

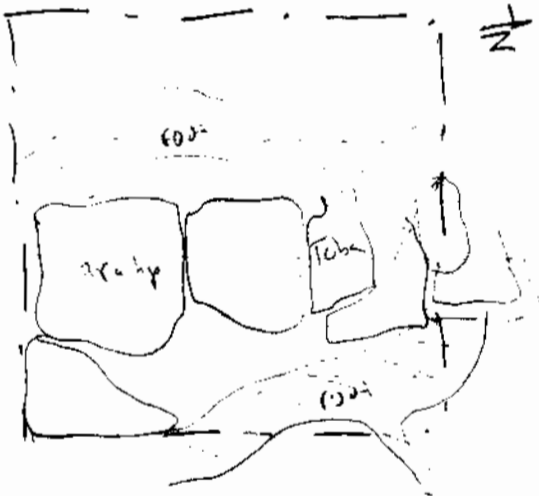
2003-1-39

Q. 4/8/1 cutting done in front of where the wall should be - all very firm it doesn't seem to be so well ponded here. Will keep pushing timber until we find it or get a look at the FIM (plus this). There is a soil change (to the 14. bar clay) in the S half of the unit. Will change logs here.

- SEC 56 a bgs
- SWC 59.5
- NEC 14
- NWC 9.5
- (Call for NWC data)

4/8/2 - cutting done to S of wall area (not well ponded). Around here, use screening.

Q. 4/7 possible SWC - but more likely part of the surface defined by the modern wall. All sites at 30+ bgs (SWC). Still 30+ a down the floor - all disturbed by very large roots.

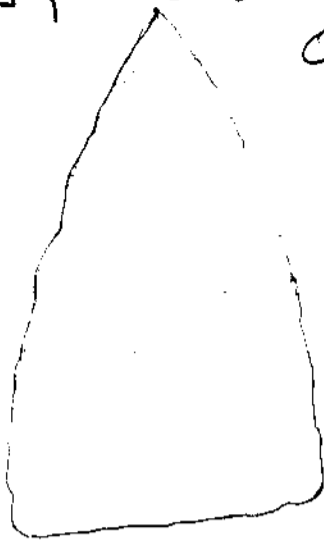


Now being flat rods - all held in place by roots

Q. 4/11/2 Ledge join pull table blocks when he had a better idea before - betw PPN 36+37.

Mon. 14 July 2003 (cont)

2003-1-40



Op. 4/11/2-1

clay basin

← large fracture

Op. 4/8/2 Cont'd down in front of the tumbled wall - here it has passed to what appears to be a better-preserved wall line zone 1m S of the N margin of the unit. Cuts + within contour to be done in front of it.

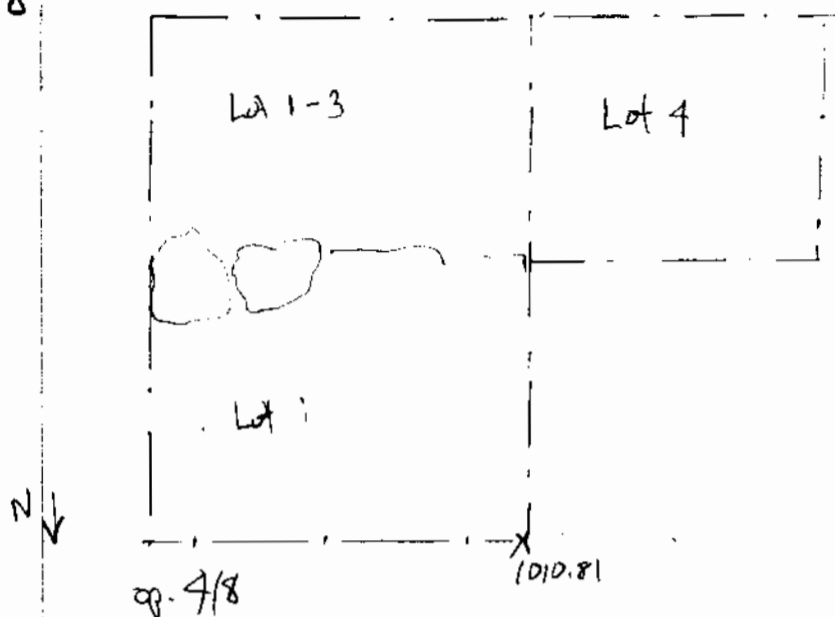
Tues. July 15, 2003

Convoy work - MAC opening excavations at Capital (3 crews, pits to be located on plus side of St. 7, + behind it, as well as in front of St. 5). Lots to La Entada for baby, etc.

Op. 4/8/3 - lot of 5 ← down Floor 1 - which was part of the same element as seen in Op. 4/3. Now only unit to W to follow wall + debris when it shifts to a better condition. This is Op. 4/8/4. We may need to cut it back to the N a little to catch the wall line (It's ~~an~~ an extension of the S margin of the original unit).

Tues. 15 July 2003 (cont.)
Op. 4/8

2003-1-41



Sketch of the Op. 4/8 ext'n to the w of lot 1-3.

Op. 4/8/2 Soil elevs
SEC 79.6 1010.02
SWC 68.6 bp 1010.13
NEC H 1010.67
NWC 95 1010.72

Op. 4/8/3 (Floor) Soil elevs
SEC 81.6 bp 1010
SWC 71.6 bp 1010.1
NEC H 1010.67
NWC 95 1010.72

Op. 4/8/4: Soil Elevs
SEC 55 1010.26
SWC 54 1010.27
NEC 53 1010.28
NWC 49 1010.32

Op. 4/8/4 - top level in the 1x1 m ext'n - conc, rock + precast
block, nails, etc. - a very mixed lot (plastic trash was not found)

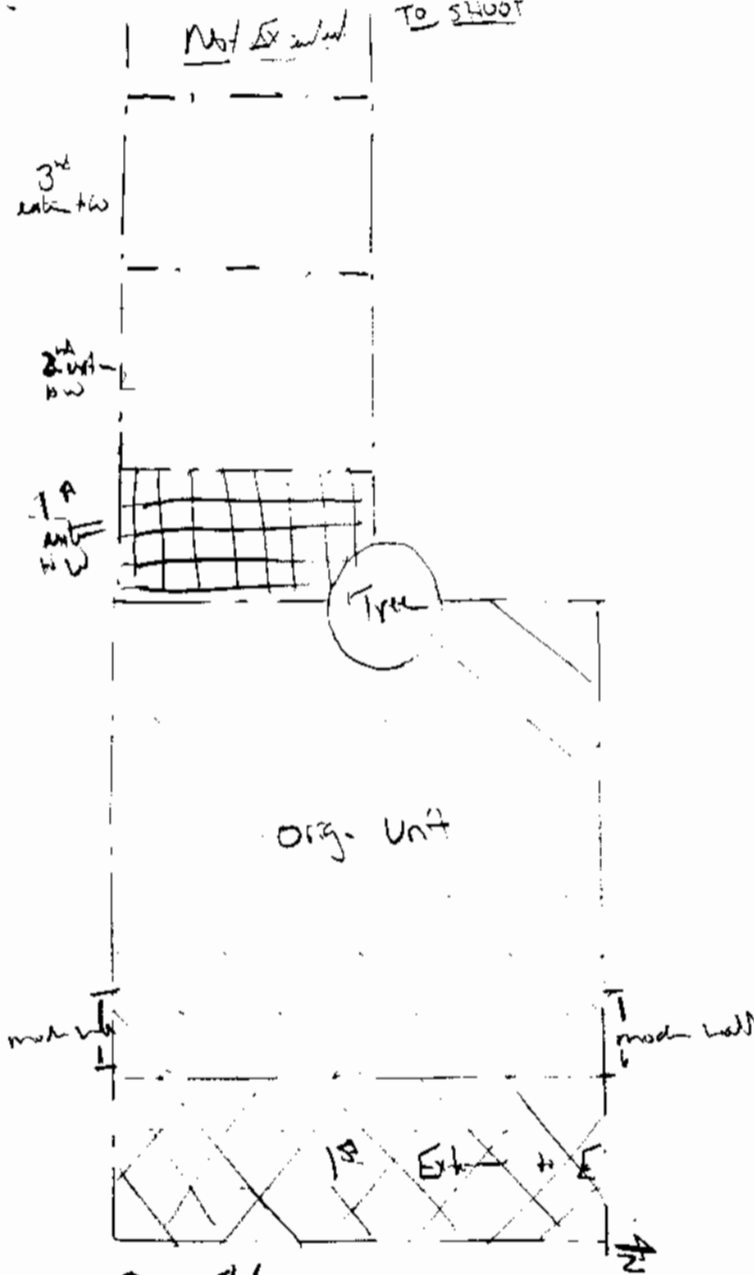
Op. 4/8/5 - 2nd level - H. Gray br soil below - Carbon depth
table - lots of sm. pieces scattered throughout the unit. not a very good
chocolate - not clear

Tues. 15 July 2003 (cont.)

2003-1-42

So far, but at least it is in the 2nd layer. Of course, a piece of modern glass was also just found in the level.

Op. 4/7 - Sailing is only the unit to the west as the floor continues but there is no vertical soil change (ie no indication that we've blown through the basal wall on the SEC). He has laid out 3 additional 1m units to the west & will start with the eastmost of them to follow the floor. He is keeping all of the lot info in his notes.



Op. 4/7 extns

Tues. 15 July 2003 (cont.)

2003-1-43

A little afternoon rain to muddy things just for fun - sun is now out again.

Op. 4/11 Jon has found a very large chunk of plaster on the W part of this unit under a lg. flat stacked rock, not to be. The base of the plaster appears to have been stained or painted red. This may be a large chunk of Fuller wall since - although it is very thick for wall stone (20-25 cm). It could also be part of a floor, but it doesn't really seem to be - not flat-laid, at least of Fuller to be a other tumbled. No casing (as yet). Will take a sample then keep going to see what lies below. The entire unit has been mostly as the is a good deal of tumbled stone - mainly in the NEC of the unit. Most appear to be very well-cut stone blocks, medium size that either did not have a color or were broken for the color (possibly peeled off the blocks in a termite end of some sort?). The plaster may have been part of a door threshold or on a narrow ledge of red-painted plaster that fell for the superstructure a tumbled block - this would explain the

Op. 4/16

<u>1/8/16 - East Stents</u>		
NEC	10	1010.71
NWC	6	1010.25
SEC	20.5	1010.005
SWC	23	1009.98

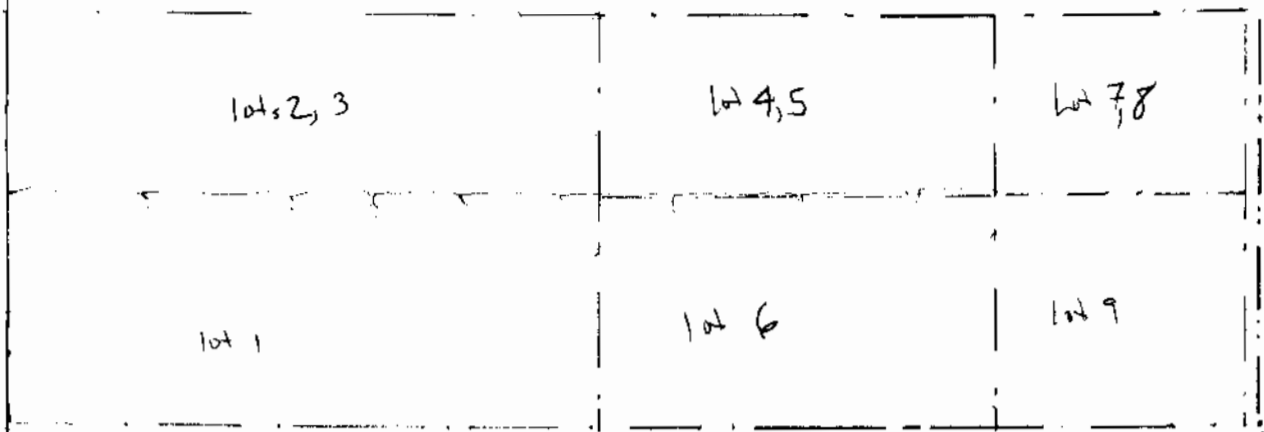
entire at the level the appears to be the top of the wall + the first level of full stone in the N part of the pit. All within the debris on soil. A root of an ant activity was present + included glass + metal pieces.

The dry end of this lot (and the threat of rain). In op. #4 getting Carter to look for the wall + reports that he may be coming onto a soil layer that could signal the presence.

Wed. 16 July 2003

2003-1-44

Q-4/8



Exhib. Q-4/8 grew more to the west to join w/ op. 4/3 (should have left part of it open, but didn't want to risk collapse w/ the rain...)

A lot (well, 2) flat sloping in fact (s) of + above the wall line - possibly a security point of some sort but more likely not. The area tumbled rocks above the lot but no evidence of another surface or wall that would be worth w/ the wall down



Q-4/7. Safety Conty to work to fill wall in 3rd W. exhibit of unit. It's likely to look like there may be a wall in this unit after all.

Wed. 16 July 2003 (cont.)

2003-1-45

Op. 4/8/7 Find Elevations

NWC	60 a b p	1010.21
NEC	62	1010.19
SWC	57	1010.24
SEC	58	1010.23

Op. 4/8/7 conty done in FA (5) of wall in 2nd w. extn. This is the H₂O-saturated soil but it too includes modern material.

Op. 4/7 looks like we may have the band wall here & that H₂O, like in Op. 4/4, may have only been well-present for 8 courses. In this area, however H₂O also appears to be stopped but a bit. Supts will continue to strip it out.

Op. 4/11 Jon has climbed to another level of tuba cut blocks & we're ready to draw the in. One in the tuba & Jon is now reg. it as PPN objects - to be on the safe side.

Op. 4/7 Supt at the wall - 3 courses, dark rocks, floor meets it (his confirming exactly how it meets)

Op. 4/8/9 opening find section (N half) of 2nd extn to chub wall. I'm wary exactly how these two sections join & it is not possible that they're the same with a layer of tuba having been taken off Op. 4/4 - well see...

So far H₂O looks like the clay may have been present in Op. 4/3 - the cobble core. There is one line of thin blocks that is well-present which is filled by what looks like tumbled - if pulled, it might reveal a wall that is

Wed. 16 July 2003 (cont.)

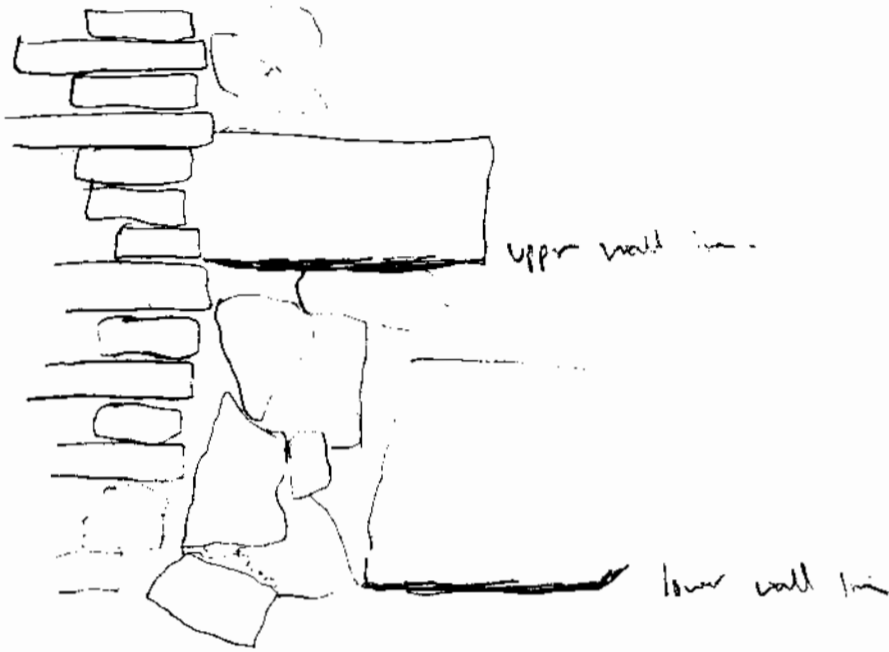
2003-1-46

more similar to that in the west of Op. 4/8.

I think in my view it is possible that we are inside the wall - and that there was an earlier version. The soil is slightly

Op. 4/8

inclined
Op. 4/3



Re-oped the E side of Op. 4/3 to expose the incl wall + see how it meets the double wall in Op. 4/8. There may be a bank of inclined rocks or it's possible that the inclined wall extends over the others. I've taken photos + sketched the possible bank + will now do limit tests to confirm.

Thurs. 17 July 2003

Satya + Jan in charge of excavations^{at EP} while I was off on recon for the Sta Cruz region. Found two sites along the Chalpi River + had reports of others, but were unable to get down to the river initially - confusion of guides - but Edm walked much of the flat area along A on

Thurs. 17 July 2003 (cont.)

2003-1-47

his own + was able to confirm that there wasn't gether in that area. It looks like this is indeed a possible cargo/cargo route between EP + Quirigua.

op. 4/10 Back at the site, Jon + Satya report that all west wall w/ don fully a lot of large ceramic pieces (obsidian, quartz stone (metals fragment) in op. 4/10 - possible middle between the canyon

op. 4/11 In op. 4/11 the same to be a fall wall with more stone blocks tumbled behind it, suggesting that they have yet to reach the floor / pt. surface + base wall.

op. 4/4 Satya checked down to what he thought might be an arden or terran surface, but while the soil is different it didn't seem to be a good surface - possibly fill with a broken out surface or tumbled above a lower terrace at the top of the wall line. Hill cut down to the area along the top of the wall to see if he can find a better surface.

op. 4/6 Satya started this unit + has had water in the W. end - close to the drain. Hill had off + the had up the slope (E), although much of the soil appears to be mixed as if it had been pushed into place by the tractor that took out a large portion of the stands. If all of it has not been mixed well by any agricultural work. So far it's possible to see that the fill includes large river cobbles - similar to those below floor 1 in patio 1 (the med-sized cobbles) as well as that local billy stone - in one case contains a well shaped block - but no to be.

op. 4/8 no excavate - ready to be drawn + backfilled.

The next priority here will be to get a test unit in the west patio (patio 4) to confirm its construction + date. News from a woman of long residence is that they used to hold the 15 Sept. celebration here until it was flooded out + silted in - could be a lot of sediment in the center.

Friday 18 July 2003

2003-1-98

Op. 4/8

Back on-site at El Rraiso - prep to draw + do final notes on Op. 4/8.

Just dug today (works can back off, 4/8 if I manage to get done). @ Jan, Yanni, + Anya (visiting from Cape) are going into Cape for the week! (Elden has kindly agreed to take them into Stander to catch the bus). Roberto is ill + Adam decided to skip for the talk at the high school this evening. The (+ most likely he) will go to Cap on Sat. morning. So we're stopping at 2:30 today.

4/8/8	Final Elctrs
NWC 82	1009.99
AWC 80	1000.00
BKC 83	1009.98
BWC 83	1009.98

4/8/9	Final Elctrs
SEC 61	1010.2
SWC 67	1010.2
NWC 15	1010.66
NWC 1	1010.80

Op. 4/8 Final notes:

Soil colors:

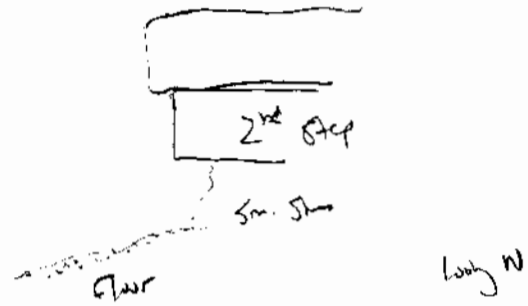
Humis 10YR 3/2
 Clay 10YR 4/3
 Silt 10YR 8/8
 Fill 7.5YR 4/6

Sat. 17 July 2003

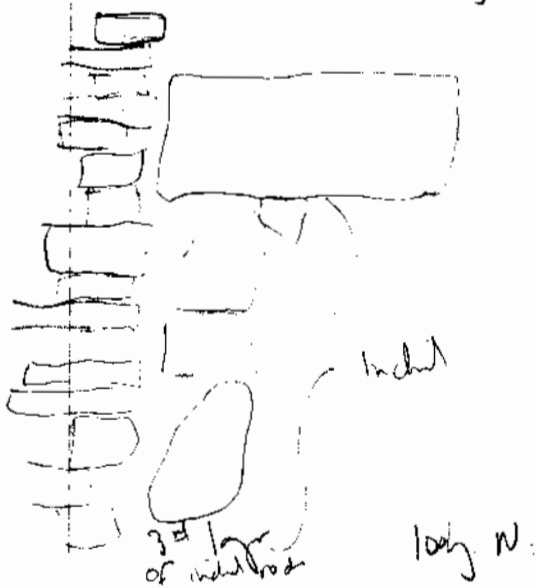
2003-1-49

Q. 4/8 Find notes photos + section of wall in op. 4/8. Two run mini-excavate to report.

Small poke into wall on floor when floor had been exposed (at 2m W of E wall) to reveal that the 2nd floor contains but to the line of the second wall, but that the wall itself does not contain clay to the floor - it seems to be fill, suggesting that the 2nd wall is actually a step.



Pulled a 2nd inch rod from the possible banded to fill a third beneath it (still in the same 11. km fill soil as the 2nd). This confirms that it was indeed an inch banded - the 1st dug is correct. With regular light rock prior to banded fill.



Sat. 19 July 2003 (cont.)

2003-1-50

Final density op. 4/8 + it is now by hand (with an inordinate amount of plastic trash - the kids got a little carried away) I also laid blue polka-dot flagging tape along the steps + balcony

Op. 4/7 Nothing done here today, but I want to mention that Sotya had the 8 x 8 sign in the E 25m + Oryza build a fairly 7 course floor well - ~~right~~ faces west. This should not be confused w/ another center. The rest of the pit will be pacified as soon as Sotya can confirm that it has been fully decanted.

Mon. 21 July 2003

Pacified op. 4/8 on Sat. afternoon before they came over to the house to wash shoes - magical to finish washing everything - needs to be bagged this afternoon - take up all the floor space. Forget to shoot photos - will add later

Op. 4/12 Started op. 4/12 in patio 4 - not on the grid (but since took machine before realizing that I should have shot it in) but it is oriented to cardinal directions (w/ Suno compass) so, since the steps are also magnetically oriented (for the most part) it should square out well. I'll shoot in case later.

102
to use N-S

Op. 4/12 Sky identities & Coordinates

NWC	N/A	460 N/A	N/A	(Shot blocked by tree)
NEC	915.53	460.50	1009.41	
SWC	913.38	459.46	1009.47	
* SEC	913.55	460.53	1009.43	
	N	E	Z	

Mon 21 July 2003 (cont.)

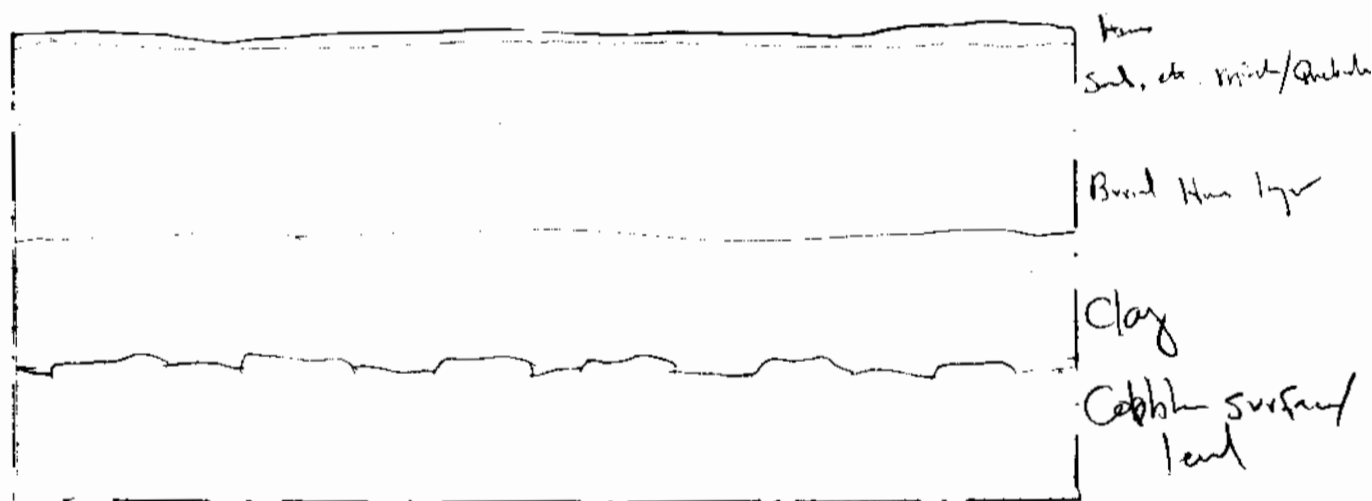
2003-1-51

4/12/1 Clay hat Op. 4/12/1 at east edge - light brown/orange color
clay - very smooth to the feel in op. 4/17 over floor.

Op. 4/12/1 Clay elements			Op. 4/12/2 clay elements			
42	NWC	42	1009.01	NWC	48	1008.95
38	NEC	38	1009.05	NEC	46	1008.97
42	SWC	42	1009.01	SWC	54	1008.89
30	SEC	30	1009.13	SEC	51	1008.92

5 studs, 2 beams

It looks like we have a cobble surface of some sort
concrete below the clay level. A few flecks of
studs were present in the fill above the cobble but
there is no concrete/pebble subfloor. Will clean + photo
(draw if needed).



Sketch of op. 4/12

The cobble surface, which contains is not as well laid a floor
in patio 1 - it's made of much smaller, less flat cobbles

Tues. 22 July 2003

2003-1-5

9/12 Conty below Cobble surface (empetrado). A slightly higher - color soil is appear w/ artifacts (is in low concentration so far, it looks like the Cobble surface was the latest in a series of floors that found this patio.

Shdy to get some sub-floor-like pebbles (cascija / piedra) or a layer will clear down to it - no sign of sources above it. Artifacts continue

Op. 9/12/3 Final Elevts

SWC 65	1008.78
SEC 59	1008.84
NWC 67	1008.76
NEC 65	1008.78

Conty below the pebble / piedra level. Light brown clay soil. Now larger rocks are appearing along w/ very fine cement - fill episode as seen in patio 1?

Op. 4/12/4 Final Elevts

SWC 126	1008.17
SEC 123	1008.20
NWC 142	1008.01
NEC 140	1008.03

The rocky layer does not appear to have been fill as the layer of soft soil below includes shreds again. Closed op. 4/12/4 + layer of 4/12/5 at the clay.

Op. 4/12/5 Final Elevts

SWC 158	1007.85	NWC 160	1007.83
SEC 167	1007.86	NEC 161	1007.82

Wed. 23 July 2003

2003-1-63

Long USA at Cabital this morning - all looks good. Back at El Pami by op. 9/12. The "bottle" by - is still, wettest-kind. A. Jorge colored soil with a fine pebbles. I would be hard to hit rock, but it's stable + lots so well seen A here as is. We cut deep into W half + left the south half higher (see profile for details)

Soil Colours:

- | | |
|-----------------------------------|------------------------|
| 1 "mud" layer - sand, gravel rock | 10YR 3/2 (Sand = sand) |
| 2 broad horizon bed | 10YR 3/1 |
| 3 clay collapse | 7.5 YR 4/3 |
| 4 floor/emplanted | 10YR 4/3 |
| 5 rock sub-floor/rock | WYR 3/3 |
| 6 brown clay | 10YR 3/2 |
| 7 yellow clay | 10YR 3/4 |

All soil tubs have substantial clay deposits -

Draw E profile of unit + the bedrock to conduct excavations in Patio 4. Will continue this time near to the architect in 2004.

Jan continues in ops 4/10 + 4/11 in Patio 3. He has sand panel units below the floor level in op. 4/10. This pits will be finished by the end of the week.

- | | |
|--------|---------------------------------------------------------------|
| Thurs. | 24 July - mapped S of town w/ Santiago got to Ococh |
| Friday | 25 July - PAREP trip to La Entada, El Pami, Bodega. |
| Sat. | 26 July - mapped mapped S+W of EP w/ Pami + Yards. |
| Sun. | 27 July - PAREP trip to Guiriqui. |

Good Informer about S-01 (El Paraíso)

Site is compound of streets on a raised platform located on the N side of both the R. Rosario + the R. Ocoté. The streets form 4 patios (N patio, central patio, 2 south patios - Patios 9, 1, 2, + respectively). Many of the superstructures appear to have been lost to modern construction but a few buildings have been preserved.

Sapper found 5 street structures on his map: (in RAREP system)

Strs. 1, 2, 4, plus 1 str. on the N side that connects Patio 4 to Patio 1 + another at the S. end of Patio 9 (I have also seen a superstructure wall line that would seem to confirm this str.).

We have been able to locate additional str. marked

Strs. 7, 3, 7, 10.

So, while much of Sapper's map seems to be accurate, some things have disappeared while there is more detail than was present on the map.

North Patio - Sapper didn't close the NEC - Now there is a large wall of landfill in that corner (back corner of Don Juan Meléndez Solar) + Str. 10 is on a raised surface directly East of it.

We also have reports that walls were found in the street that runs along the E side of the patio/solar + that they continued all the way along the street to the ^{SE} corner of the park, suggesting that the patio was indeed closed on the NE side. I'm still not sure how Str. 10 fits into the layout. There are additional reports of walls walls being found in the NW of the park, under the Commercial "Los Gemelos". They were said to have been seen 2m high + completely underground.

The best preserved areas of the North Patio (Patio 4) seem to be found in Doña Sylvia's 2nd solar (Central parts of N side) + Don Juan Meléndez's solar (NEC + E side), + Don Samuel's solar (W side, N of Str. 1)

General Info - 5-01 (Cont.)

So far, based on op. 4/12, we know that Sediments in the S. Port of the Patio del Kermi Mitik (1998) was not extensive. The questionnaire did overstate its bank & pass through the area (partially bury Don Juan & Doña Alicia's house) & it did drop a lot of small river rocks, but it seems to have been may be enough to hold most of its sediment, leaving it only the S. bank at the rear (W) of the property. The area of the patio (op. 4/12) includes 22m of sub & gravel above a hard soil horizon & were fully present in material & architecture (cobble floor) at 4654 m bsp. So, while it may still hold some in other parts, it doesn't look like there was more than 12m fill above the final construction plane in this area. We had been told by an older lady (40 yrs. resident) that they ~~used~~ used to celebrate Sept. 15 in the patio & that it later flooded during a hurricane or some other lg. storm, & that's when the houses were built.

The well-preserved part of the N. wall in Doña Sylvia's 2nd Solar may include part of the Superstrate as the plat. is very narrow there (some 1.5-2m wide).

Took a walk around the block & it looks like Ar. 10. may still be on an east platform. Some we've been told that there were walls in the street near the Commercial "Los Genelos" & we can see that the street along the W side of the park dips to the N, & there is a drop off on the W side of the Iglesia Centroamericana Solar. It is plausible that these features found the N+E edges of another patio E of Patio 4 (see plan sketch). It isn't possible (or rather I haven't been able to see) ~~at how~~ the patio reaches to the south. It is possible that it continued until it came to the S edge of the platform (now destroyed by the Q. Rosario)

General Info - 5-01 (cont.)

No firm way to prove this, but it can remain a possibility. It might also be the case that the world had been after trucks w/ 50+2 w/ky w/ other to form a patio group.

Str. 1

This building continues to baffle. I realized that, in a great of what we'd been told by people here, Yde reports that the Superstore found North + that there was a Str. on the N side w/ a room on top that w/ its long axis N-S + a doorway drilled by a pipe. Well that's the side next year.

Dr. Arthur Caballero (Culpa on 5/06) also stopped by yesterday to say that he had gone into one of the rooms that people are always talking about + found a canal made from. He said that the Str. the exploded out to the street that passes along the west side + that the openings were close to street level at the point where there is a small bump of earth that appears to have been displaced by the tractor. Arthur reports that the entrance was partially buried (it probably partially dug out) by the tractor.

Notes for next year - Soil sampling strategy - Swabs, phytolite? By proper equipment. Lab dirt

Mon. 28 July 2003

2003-1-57

Got Jon St-ld on bagging & washing glands at the lab house. Did receipts until 9:30 & the material to Gayle of Muelle. We got pits (3) & the prep to S + W of SA - also meant to fill in the burda.

Tues. 29 July 2003

Jon continues to separate glands, etc. - will get his bag on counts, weights, & photos tomorrow, as well as go over the types I recognize of him.

Ricardo, Cathie, & Jorge are set to visit tomorrow. Will do tea w/ lunch.

Spent today mapping in the rest of the burda on the E side of the Ecote w/ Santiago, Dimita The Younger, & Marlon. A killer day, but we got it in.

Wed. 30 July 2003

After prep for Ricardo's visit I'm now in the lab looking at the Ceram, etc. for ops. 4/5, 4/3, 4/8, & 4/7, - basically the ops. that Pamela, Santiago, & I did - Jon is looking at his own material for his thesis - Mac & I will also help.

This will NOT be a full-on analysis - we're basically doing or best to get a few very basic, very preliminary assessments of the material culture at the 3 lg. Cents excavated: El Pinar (5-01), El Cafetal (5-02), & El Guaya (5-03). Mac will look at 5-02 & 5-03 cents, Yann will look at the ops. he excavated at 5-02.

A much more thorough & complete analysis will be conducted in 2004. Now, we'll get counts, weights, & photos of diagnostic materials.

Wed, 30 July 2003

2003-1-58

Op. 4/12: 1.2m unit in S half of Patio 4 (N. Patio).
Exhibit through top soil into 2nd level of Stratigraphic clay.

- Stratigraphic:
- Level 1 4/12/1 { Top Soil (very thin - 1998-2003)
 - 2 { Match Level - (Sand, gravel, clay)
 - 3 4/12/2 { Burial soil horizon (July 10)
 - 4 4/12/3 { Patio floor (loosey-orange, small, relatively flat-laid cobbles)
 - 5 { Rock + gravel below floor
 - 6 4/12/4 { dark brown clay
 - 7 4/12/5 { light orange-brown clay

Op. 4/12/1 - Level 1 Match + top soil
 5 roof trim fragments
 2 animal bones - look like lg. mammals (separated out)

Op. 4/12/2 - Level 3 burial soil horizon/collapse
 5 slabs:
 2 plain utilitarian ware, brown paste
 1 bit part of groove - Caracua or similar nicha - fine grooves
 1 burnished bowl body, orange slip exterior
 1 " " " " " interior

Op. 4/12/3 Levels 4+5 - Patio Floor + Below
 4 rocks discarded
 12 slabs
 1 bowl rim (2 pieces) brown
 2 utilitarian - similar nicha or Caracua
 1 soft brown paste
 2 jar bodies - brown paste
 3 remains jar bodies - unglazed
 2 Adena or fig. figs

31 July 2003

2003-1-59

Op. 4/12/4 - Level 6, dk. brn clay
1 red, iron-rich rock (observed)
1 sand rock - possible polychrome - (separated out)
2 white shells that look a little earlier - Anti-trad. pattern
one includes light body + a dk red-amp slip on the interior
the other is buried on the exterior + may be part of a neck

Op. 4/12/5 Level 7 lt. orange-brown clay
1 oblate black - with prismatic (separated out)
7 shells
2 rods - discarded
One shell includes sherd + a white wash on the neck W rim
looks a lot like the Fake Magdalena from Naco Valley or it
could be earlier.
The rest are brown-patched utilitarian ware

Summary: most appear to be late classic with some possibly earlier
material below the cobble surface (Ops. 4/12/4 + 5). Possible
open counts of striated glaze but there could also be local or foreign
(Spanish material). One that may be a link to Chulucán drainage - the
Neck of incense + white wash in op. 4/12/5.

Thurs. 31 - July 2003 (cont)

2003-1-60

Op. 4/5 2x2 m unit on the PARSEP grid in Patio 1, W of op. 4/2

Op. 4/5/1	Level 1	Humus level (above mitch)
	2	Mitch clay
Op. 4/5/2	3	buried soil horizon - humus
	4	Terminal debris + overburden above floor 1
Op. 4/5/3; 4/5/4	5/6	Floor 1 - Level 5 = plaster, Level 6 = Cascajo
Op. 4/5/5	7	Densely-packed cobble fill

Op. 4/5/1 - humus + mitch sediment
4 roof tile frag - light color, large

Op. 4/5/2 old soil horizon + terminal debris - mixed lot.
10 tobacco flakes/pieces (separated out)
11 rocks - discarded
1 rusty nail
1 Pepsi bottle fragment
1 1989 10 centavo piece (Honduran)
1 lg. mammal tooth (cow?)
2 frogs bajanym
1 shell - small, eroded brown ware
1 roof tile frag

Op. 4/5/3 - Plaster floor - no artifacts but a floor sample was taken

Op. 4/5/4 Cascajo layer
1 shell - soft paste - surface, fine? w/ red or 2 parallel black lines.

Op. 4/5/5 densely-packed cobble fill
1 shell w/ incision or punctured filled, brown paste, irregular fragment - could be possibly EC
2 frog concentric floor sample (separated out)

Thurs. 31 July 2003 (cont.)

2003-1-61

Op. 4/6 2x4 m unit (in 2 sets each 2x2m) on W side of
S-01 - Str. 1

Coordinates for Op. 4/6 (not included elsewhere in notes)

	N	E	Z
NEC	852.98	419.00	1007.05
NEC	852.98	421.00	1007.59
SEC	851.98	420.98	1007.79
SWC	851.01	418.99	1007.89
E. ext. S	850.98	422.98	1008.69
N	853.01	423.02	1008.26

Empty unit - Soil mixed

Thurs, 31 July 2003 (cont.)

2003-1-62

Op. 4/7 2x2 unit situated on SE edge of str. 1 - entirely exposed to both E & W.

Coordinates for op. 4/7 (not included elsewhere in notes)

	N	E	Z
SEC	834.01	456.98	1010.06
SWC	834.00	454.98	1010.19
NWC	836.01	457.02	1010.03
NWE	835.98	455.01	1010.39

Op. 4/7/1 Level 1 in original unit
1 shell w/ broken s — x red slip.

1 jar

1 lg. brown-glazed

1 tooth-ant

1 bj. fig

2 chert figs

6 "lg." tube figs

6 very small tube figs

1 rock-disced

Op. 4/7/2 1x2 m. exhib of op 4/7 to E to cut down in Pt of wall

1 brick

Op. 4/7/3 chg in str 2x3 unit due to floor E of wall

3 shells

1 bajing fig

Shells are eroded - 2 are brown-patched, un-striated jar body shells
One is an eroded eroded jar rim-chert lip

This 2) July 2003 (cont.)

2001-1-63

Op. 4/3 originally a 2x2 m unit on N side of Patio 1
but on wall line

Op. 4/3/1, 4, 2, 5 Level 1 Plms + overburden / collapse
4/3/6 Level 2 clay above floor - for top of 1st step down
Level 3 floor - planks + Coconjo
Level 4 lg. cobble fill below floor
Level 5 cobble surface at water level.

Op. 4/3/1 orig. 2x2 m unit on N side of Patio 1

3 rods - drilled

1 modern (glazed) ceramic dish

10 shubs

3 Raul body shubs

1 Switzer make body shub

1 lg. beaded jar shub w/ orange-red slip on ext.

2 jar body shubs

3 H. be body shubs

Op. 4/3/2 conty down onto wall (stepped) Highest unit

1 modern jar body (glazed)

4 rods - drilled

2 Frag of painted ceramic (spotted)

1 lg. shub of glass

41 shubs:

3 turquoise rims

3 bare fig - Danta be

1 conch rim

3 " " Jiro - be

1 flat edge beal rim

5 ind.

1 beal beal

6 Raul-like red-painted jar bodies

11 H. Colmed jar bodies

8 dk-colored jar bodies

Thu. 31 July 2003 (cont)

2003-1-6A

Op. 4/3/3

10 lg. Fine antil brown lg. mammal
2 Jute bags

Shel 71: large conch / base frog

1 body shell of petate impurities

1 w/ light striations

3 sand-like shells but rim is not real shape

Conch rim

all other utilities body shells - fine + very coarse parts

4 rods - dusted (one w/ red tinge - metal)

1 depth base

only a select photographed

Op. 4/3/4 - 5 extra of unit 1 m - due to floor

49 shells

4 chert

1 tube

2 bymper

Op. 4/3/5 - conty down in 1x2 m S. extreme into dirt low soil
(level 2)

65 shells

42 body shells - utilities, some shipped (inside & or outside)

3 brushed body shells

2 ground body shells

3 sand-like body shells (red or grey)

12 Conch fine - fine w/ petate impurities

2 lg. band body - thin walled

1 bicarbonate rim

1 medu anis

1 mud

2 tube frog

} Sept
ass

1 Chert frog - Sept out

9 rods - dusted

Select photograph

Thu 31 July 2003 (cont.)

2003-1-65

Op. 4/3/6 - down to plate floor in entire unit.

1 rock chisel

12 Shubs: 1 coned rim - flat

1 long-on-buff

10 body fry

Op. 4/3/7 - below floor into floor

1 tube fry

1 obsidian flake

2 Shubs (1 body fry, 1 restricted orifice bowl)

Op. 4/3/8 + 9 Cobble fill

7 Shubs including one lg. coned w/ loop handle

Op. 4/8 - unit E of op. 4/3 designed to get the corner

Level 1 hum/orchard

Level 2 clay above floor

Level 3 floor

Op. 4/8/1 - 1st 2x2, level 1

66 Shubs: 55 white body Shubs - low paste, moderately coarse

1 brushed body Shub

2 thin-walled jar bodies w/ red slip

1 tube handle

1 strap handle

1 low body w/ medial flange

4 coned rims

1 thin-walled bowl body

Thurs. 21 July 2003 (cont.)

2003-1-66

Op. 4/8/1 (cont.) (All spelt out.)

9 rows tile frog
1 metal bottom
2 teeth
5 small bone frog
1 chub frog
1 quartz frog
2 piglet shoes
11 tube frog
15 Rats - discarded

Op. 4/8/2 Conty in orig 2x2 S of wall lin.
1 med-size tile block

15 Shubs

1 Cam or fig. fragment (nose)
2 small bones
4 sm. frogs tube
Sent out

Op. 4/8/3 dirty over floor in orig. unit
3 Shubs

Op. 4/8/4 1x1m extn to W. (to S. end of unit) to fill wall W

30 body Shubs - thick

3 thin body Shubs

1 thin rim

1 Red-like red-shipped jar

1 coal handle

1 ground tile handle

1 ground teakota rim

1 reg. teakota rim

5 coal rim frog

4 lg. bone frog

5 frog chime

2 frog glazed earth

4 teja frogs

1 nail

1 metal tube

6 tube frogs

Thurs 31 July 2003 (cont.)

2003-1-67

Op. 4/8/5 - Lat 2, S. of well due to slow haul
33 Shds:

20 white body fng
5 the walled bowls (1 body, 4 rims)
4 Conch rims
1 red-painted drop handle
1 red/orange plate rim
1 broken / started jar body (Swish Molina?)
1 Pearl-like jar fng
6 tube fng
2 rods discarded
1 glass fng (green bottle)

Op. 4/8/6 N half of 2nd extreme
9 Shds:

8 body fng
1 body fng red slip
1 conch rim

5 red tiles
1 coin

Op. 4/8/7 - 2nd W. extreme, both ends
21 ~~shds~~ shds:

19 body fng
1 bowl fng
1 applique (orange)
1 chert
1 bone fng
2 Chert fng
3 glass shards
4 rods - discarded

8 white fng
18 red tiles

This 31 July 2003 (cont.)

2003-1-68

Op. 4/8/8 cuty den in box of (5) wood in 2nd W. exhibit

Shards:

- 21 body flints - thick wall
- 1 body flint - beveled
- 3 body flints - thin walled
- 1 handle w/ groove
- 1 fig. pin or adornment
- 6 cord rings
- 1 thin-walled jar rim
- 1 chert flint
- 4 bone flint
- 1 jute flint
- 1 glass shard
- 3 Chert flint
- 10 tuba flint
- 3 roof tile flint

Op. 4/8/9 - AD part of 2nd W. exhibit

- 9 rods - disarticulated
- 1 bone
- 9 roof tiles
- 3 bone flint
- 15 body flint
- 1 handle flint