

2003

EPV 006 Geller Field Notes 2003

Pamela Geller

Follow this and additional works at: <https://digital.kenyon.edu/honduras>



Part of the Archaeological Anthropology Commons

Recommended Citation

Geller, Pamela, "EPV 006 Geller Field Notes 2003" (2003). *Four Valleys Archive*. Paper 96902.
<https://digital.kenyon.edu/honduras/96902>

This Field Notes is brought to you for free and open access by the Anthropology at Digital Kenyon: Research, Scholarship, and Creative Exchange. It has been accepted for inclusion in Four Valleys Archive by an authorized administrator of Digital Kenyon: Research, Scholarship, and Creative Exchange. For more information, please contact noltj@kenyon.edu.

PAREP
Field Notes
2003
Pamela Gelb (6)

2003-06-06 (MONDAY)

opened and closed: June 30, 2003

4-3-1
2m x 2m

north edge of Patio 1

stone alignment appears on surface, following down and to the ~~NE~~ in anticipation of exposing more intact.

in NW corner of unit

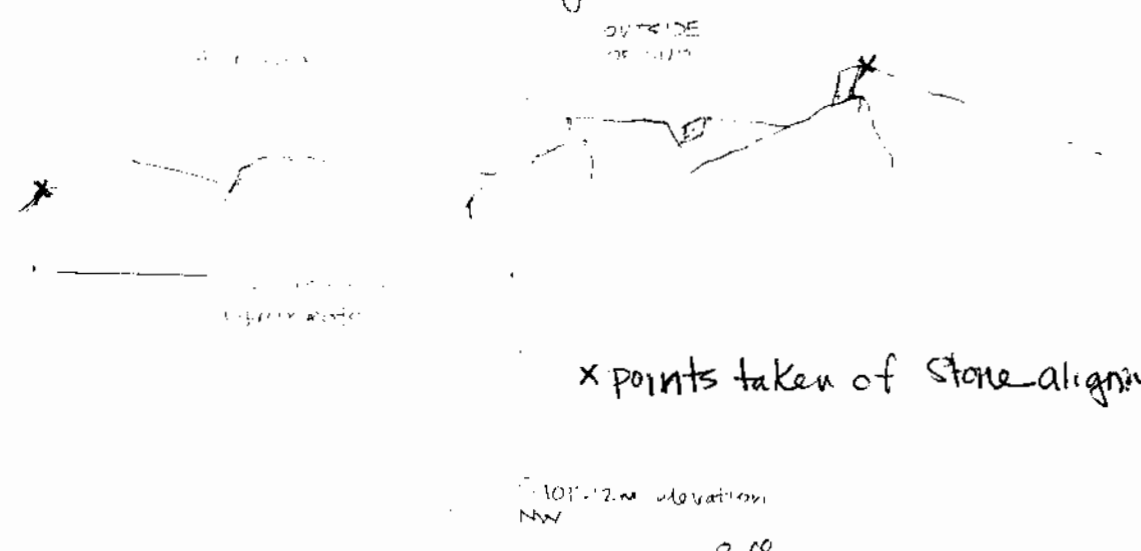
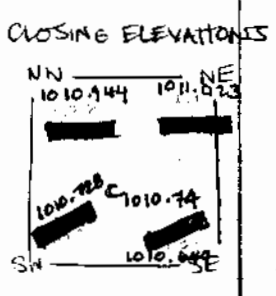
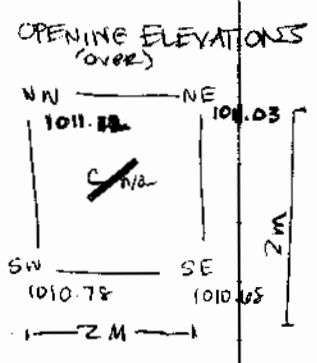
- Is this patio one terrace or two? How does it relate to patio's floor found in unit last year?

Basic goals: 1) architectural definition; 2) construction phases - is there something earlier than Late Classic; and 3) basic chronology

PHOTOS (with digital camera #3 and #4 series shots of units after cleared up but before excavations. Co-ordinate photos to use 20pt with the camera.

#9 #10 Stone alignment cleaned up

There is much modern cultural disturbance - area was first cleaned of all trash and loose rocks. Even excavating down into lot 1, we are still finding a mixed context with modern debris. Soil is a dark brown interspersed with roots. The odd artifacts include ceramics. No screening was done.



opening elevations were taken at the ^{Surface} level of the units four corners, after excavations had commenced. Hence, no center elevation. They were shot in with the ELN

4 / 3 / 1

2003-6-2

opened & closed June 30, 2003

2 m x 2 m unit on the north edge of PATIO 1

AN EDM was used to shoot the opening elevations* of the unit's four corners (in meters). These should have been downloaded into the database.

NW: N.) 863.38
E.) 485.28
* 2.) 1011.12

NE: N.) 863.24
E.) 487.22
* 2.) 1011.03

SW: N.) 861.47
E.) 485.15
* 2.) 1010.78

SE: N.) 861.28
E.) 487.09
* 2.) 1010.68

to get the unit's closing elevations the NW corner was used and a tape measure, line level, and string were used to measure the depth from this point. This depth was then subtracted from 1011.12, the NW corner's opening elevation. Closing elevations were: NW = 993.52; NE = 1001.42; SW = 971.92; SE = 963.02

The center of the unit: no opening elevation was taken, but a closing elevation was shot in with the EDM

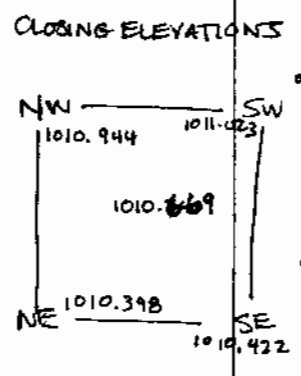
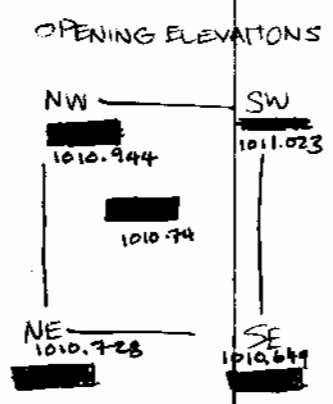
CENTER: N.) 862.36
E.) 486.20
2.) 1010.74

4/3/2
 OPENED June 30, 2003
 CLOSED July 1, 2003

2003-06-03
 PAGE

PHOTO LOG #11 & #12
 (DIGITAL IMAGES) - TUMBLE
 BEFORE PULLING

**2m x 2m unit
 north edge of Patio 1**



- In this lot the soil in association w/ the stone alignment is being removed to expose the wall's parameters. Tumble from the wall is being removed as well. One in four buckets are being screened. The terrace's wall appears to have collapsed in a slanted way and backward instead of having fallen forward. The wall is about seven or eight tiers, and cross cuts the northern half of the lot.
- The soil in this lot is the same level as the previous one - dark brown, sandy loam that is wet. When it dries, it turns a light grey color.
- Very little is coming up in either the screen or the unit. There are a few ceramic shards.
- At the southern end of the unit there are large stones which appear to be tumble.
- Disturbances in this lot include root intrusion and the presence of modern cultural debris, although significantly less than in the lot above this one.
- The wall is continuing down and we are trying to expose as much of it as possible. At the SW part of the unit there is tumble which originally looked like alignment. Excavating down has pedestaled these stones so they were pulled when sufficiently loose - but their presence is dually noted.
 A map of this "tumble" was drawn with elevations prior to the stones being pulled.

4 / 3 / 3

2003 - 6 - 4

OPENED JULY 1, 2003 ; CLOSED JULY 2, 2003

2x2m² unit on the north edge of Patio 1

- This lot was began after the tumble from Lot 2 was pulled; it represents the soil and stones below the tumble. No noticeable change in soil's color or consistency. Still screening every one in four of the buckets.
- Some modern debris still coming up in the unit, like a soda bottle and some Ceramics (they have glaze). Animal bone was also found as well as a little fragment of jute shell.
- underneath the tumble from the SW corner that had been mapped there were more (about 2) large flat stones that also had tumbled down. Perhaps they had sat atop, or were stacked, along the upper edge of this wall. These stones were pulled and currently reside along the edge of the unit's southern sidewall. ? then to the northern edge of the unit.

lot was closed because there was no more room to excavate, or follow the wall down. The wall after more exposure looks like it was intentionally sloped when it was constructed. There is decided slumping at the top of the wall and the western half is significantly better preserved than the eastern. As is visible now there are about 20 or 22 tiers to the wall, mas o menos. We bet on what the final count will be: Misa: Angel both said 27, I said 31, Ellen said 35. Vamos a ver.

An additional ~~lot 4~~ ^{lot 4} was opened as an expansion unit in order to see more of the ~~lot 4~~ wall.

4/3/4

2003-6-5

OPENED JULY 2, 2003 ; CLOSED JULY 2, 2003

1 x 2 m² unit

1 meter runs N-S and 2 meters run E-W

EXTENSION UNIT

No buckets screened for this lot. It is comprised of the humus layer - dark brown soil (though not as dark as the soil below it), sandy loam, w/ cobble inclusions (small to medium in size) and root intrusions. This is the same as 4/3/4.

No photos taken

Lot is an extension of **4/3** [redacted], designed to better expose the sloping wall. It is the hope that this unit will contain the juncture of wall and patio floor.

4/3/5

2003-6-6

OPENED JULY 2, 2003

1 x 2 m² northern end of Patio 1

This lot has a slight difference in soil color from the one above it; it is a tad darker brown. with roots, tumble, and random cobbles. See documents about 4/3/2)

This lot was excavated rapidly in order to get down to the same level as 4/3/3, thereby allowing more room to follow the wall down to its terminus.

In the Stratigraphy you can see a distinct line between the lots

± palm tree is growing on the western side

4/3/6

2003.06.07

opened 7.2.2003

CLOSED 7.3.03

3 m x 2 m unit on northern side of Patio 1

Following the wall down further in anticipation of where the wall meets the floor.

The unit includes the original $2 \times 2 \text{ m}^2$ (Lots 1-3) and the expansion $1 \times 2 \text{ m}^2$ (Lots 4+5)

Northern ^{elevation} points are now being taken from the top of the unit and Southern ones from the bottom (-the bottom of the expansion unit). A center elevation - or more precisely an elevation at the bottom of the wall in Lot 3 will serve as a place to measure from.

One in four buckets are being screened, but very little is coming up in the Screen. Half way through excavation of this lot screening was stopped because the matrix will not pass through the screen. The soil is becoming a little lighter and "gravelly" to the touch, but this just could be ~~the result of~~ ^{the result of} greater exposure to the Sun. This type of soil is constrained to near the wall and in association with the floor.

The floor is coming up (peaking through) the soil. First visible closest to the wall.

The majority of the soil in this lot is the following: After consulting with Jonathan Babout the layer in his unit directly above the plaster floor, it seems that we are getting something similar in this unit. The soil is very clayey and dark brown. There are few inclusions like roots and small or medium cobbles. There is no tumble. We came down on this type of soil first in the western side of the unit. The eastern side was higher to begin with so it came later. What few artifacts

2003.06.08

41316

Continued...

opened 7.2.03

closed 7.3.03

There are have come from this eastern side.

EDM POINTS

BASAL POINT

THE 1ST POINT WAS TAKEN ALONG THE WALL ABOUT 50CM FROM THE EASTERN SIDE WALL. THE 2ND POINT WAS TAKEN ABOUT 50CM FROM THE WESTERN WALL.

1) 861.485 N
486.46 E
1010.007 Z

2) 861.62 N
485.73 E
1010.0092

The only place where the ^{plaster portion of} floor is preserved is where it abuts the basal edge of the wall. Farther out from the wall no floor was preserved as evidenced by the sub-floor fill.

The part of the floor that was so well preserved was most likely the result of tumble settling atop it

- The little part of visible plaster is a yellowish color - the same as it appears in other excavation units around the platform. It is more "gravelly" and sandier to the touch.
- The subfloor fill is dark-greyish brown soil comprised of small to medium cobbles.

Prior to ^{elevation} measurements this portion of the subfloor fill is being leveled off. The preserved plaster floor is being kept intact and will be included in both plan and profile maps.

done

10

5/11/10