

2005

EPV 006 Geller Field Notes 2005

Pamela Geller

Follow this and additional works at: <https://digital.kenyon.edu/honduras>

 Part of the Archaeological Anthropology Commons

Recommended Citation

Geller, Pamela, "EPV 006 Geller Field Notes 2005" (2005). *Four Valleys Archive*. Paper 96919.
<https://digital.kenyon.edu/honduras/96919>

This Lot Card is brought to you for free and open access by the Anthropology at Digital Kenyon: Research, Scholarship, and Creative Exchange. It has been accepted for inclusion in Four Valleys Archive by an authorized administrator of Digital Kenyon: Research, Scholarship, and Creative Exchange. For more information, please contact noltj@kenyon.edu.

15 June 2005

2005-06-01

Monday - logistical things before starting excavations

1. Laying a trench on Structure 5. This building borders the southern end of the site. Its long axis appears to be running in a N-E-W direction - the western side of the structure adjacent to the central plaza. However the building could be more of a square than a rectangle and slump is obscuring its true parameters. Regardless, the trench is going to be laid in a N-S orientation so that ~~it~~ intersects w/ the unit's ^{primary} long axis.

The E side of this structure would perhaps have been a good place for trash dumping and should be checked for middens in the near future.

Two trees are located atop the mound - one to the East & one to the west. So it would have been challenging to excavate this long axis anyway - unless the trees were chopped down.

2. The archaeologists are finishing the laying out of their unit from Friday - bisecting the two mounds (structures 2 & 3 that comprise the "ballcourt". The long axis runs north-south. When they are finished, we will shoot those points in w/ the EDM. Remember to note the elevations for taking measurements (BGS) ~~at the corners~~ during the course of excavation. This trench was finished, though it is a little ^{complicated}.
3. Backsight to the station on top of Structure 1 before shooting in new datum CG then datum CS.

Cement marker should say: DC6

15.06.2005

PAREP

datum shot in

13 June 2005

2005.06.02

Workers are occupied w/ two things: 1) placing fences around the units w/ posts & barbed wire to keep out the cows; 2) putting up camp. On the former wood posts and bamboo on the ~~latter~~ latter.

Postholes were dug to support the barbed wire. These were informative about the mound strata. The place soil is - this rich dark brown. The humus layer on the morind is about 4-5cm, beneath this is a layer of orange brown soil w/ more of a clay consistency.

In some of these postholes where the structure is exposed there ^{appear to be} ~~are~~ fragments of ceramic sherds, carbon specks, etc mixed in. Excavations will ~~expose~~ expose more & clarify. Buildings are in fact seen devoid of stone.

Nat de Luca
Brianna Hill

} Students working
at Las Orquideas

we will probably excavate ballcourt structures in two parts.
Entire ~~trench~~ ^{trench} is 1m wide x 49m long for 09/02

11 June 2005

2005-06-03

Tuesday at Las Cigüidas. Workers are continuing w/ fence building and tarp construction. Val, Brianna, and I are laying out a trench on Structure 4 of Op'd Subop 4. This unit runs NNW-SSE (between 330° - 345°) the width of the mound. It is 1m x 2.5m long, the trench will hopefully clarify construction style and chronology, as well as its relationship to the rest of the site. These things are occupying the morning.

Workers

- 1 Roberto Antonio Chinchio (sp 09/02)
- 2 Victor Manuel Santiago (sp 09/03)
- 3 Martin Umberto Cartagena (Peru) (sp 09/02)
- 4 Humberto Martinez (OP 09/01)
- 5 Eider Enrique Cantarero (sp) (Kiki) (OP 09/05)
- 6 Yulo Morales (sp 09/03)
- 7 Victor Morales (OP 09/03)
- 8 Jose Manuel Ladaverde (OP 09/05)

w/ the
morning of
the trench
at El Catel

* Jorge Marcos

* Lorenzo Majia (sp)

Now going on the fence building. Laying out of trench on Structure 4 was ^{almost} complete. (Two stakes) remained when the rains started. This was about 2ish. Weather disrupted activities planned for afternoon: finishing fences, tarping units, and shooting in points. Will have to wait until tomorrow...

15 June 2005

2005 06.04

Brianna

Workers finishing fences and harping of vines. Seemed there was a bit of disagreement about what trees / bamboo to chop. That delayed Champa construction.

Supops 1 & 3 were both harped and excavations began after lunch. Prior to excavation grass was chopped & units were strung. Supop 1 - points had to be reshot after Brianna realized that the printed survey map only contained 34 points and was missing 4 stakes / points. All of the points / stakes comprising the trench were reshot from DC5. The original 34 points had been shot in on Friday, June 10 from S302 - a station located on top of Structure 1. I have to remember to delete these original points from the database and download the new points. As a point of orientation the SE most trench corner had the following results when shot:

N 128.3.13

E 1170.47

Z 981.65

After lunch Nat began excavation on Excavation Unit A of C.p9 '03 (Structure 5). His obstacle presented itself as we are lacking buckets and screens. We hopefully will have both tomorrow. Nat will be working w/ Julio & Nicole Morales.

Brianna will be working w/ Tiburcio Votrez and Victor Manuel Santiago. New workers were paired w/ workers who have excavated w/ PAREP in the past.

15 June 2005

2005-06-05

The workers were finishing taping Subop 2.

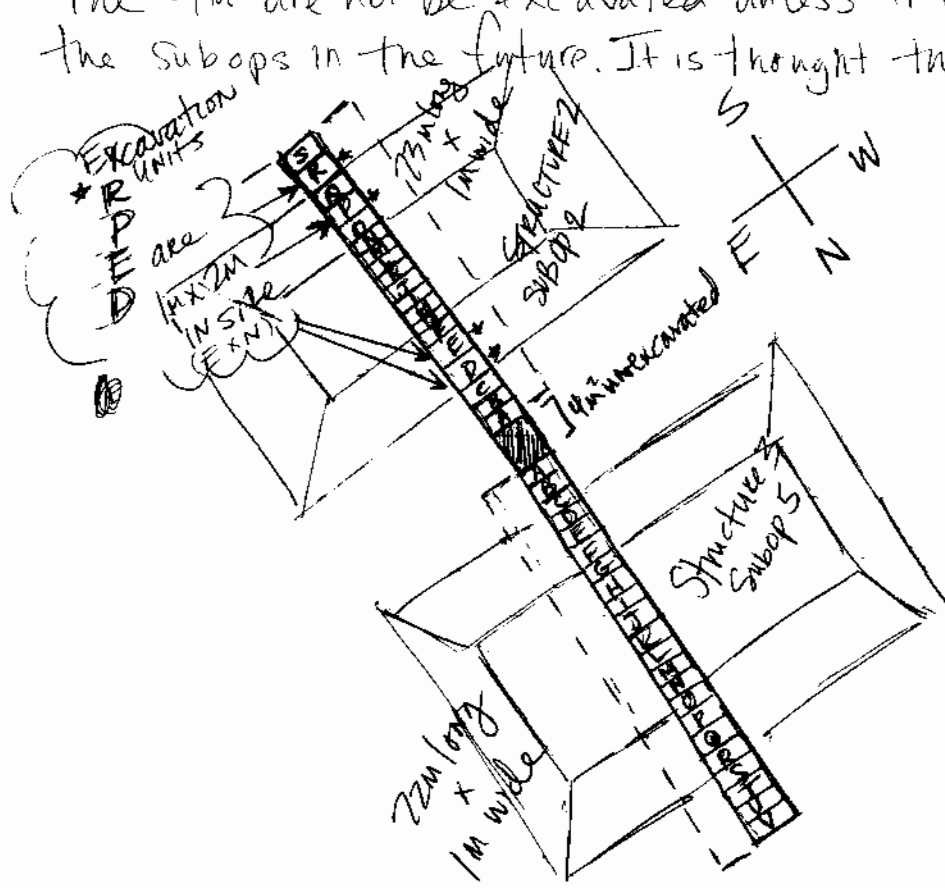
hope to have 2 units running here. Hope to start tomorrow.

The weather is significantly better today than yesterday. Sunny and breezy w/ sporadic cloud coverage

16 June 2005

2005 06 06

Thursday. Finished tarping of all units and excavations began. In the ballcourt (Structures 2 & 3), Sub-op 2 was split into 2 subops ... Sub-op 2 and the next available number Subop 5. Sub-op 2 runs through Structure 2 -- the Southern structure and is 23 m long and 1 m wide. Excavation units are A thru S running north to south. Subop 5 is 22 m long and 1 m wide. It runs through Structure 3. Excavation units are A thru V. These two subops are connected by 4 units each measuring 1m x 1m. The 4m² are not be excavated unless it is necessary to connect the subops in the future. It is thought they are the center between the two structures, or the ballcourt's alley.



Sub-op 2 : Workers in this Subop are Roberto Antonio Chinchia and Martin Umberto Cartagena (Don Beto). Both are slow but very diligent, creating almost perfect side walls. They excavated 09/10 2/6 EU A as an arbitrary lot of 20 cm -- mas o menos. When measured, final elevations for the corners were between

continued: 16 June 2005

2005-06-07

24-26 cm

SE	25	SW	24
NE	24	NW	26

EVA. Very little of interest was encountered in this first lot

Save some ceramics and obsidian flakes. Obsidian appears smoky suggesting an El Chayal source.

Ceramics are cruddy and poorly eroded. The matrix in which these artifacts sit is a black to very dark brown (according to the Munsell chart). This soil has a very high clay content. Roots are interspersed throughout, but as one excavates down they dissipate. A piece of carbon was noted, but not collected as it represented a modern burning event. Elevations were measured from SW corner of unit.

Lot 2 is another arbitrary lot of 20 cm (mas o menos) located underneath lot 1. Same as lot 1 w/ respect to color & soil type. Contents included some small, eroded ceramic sherds. Nothing exciting to report.

~~Termination~~ Termination of lot 2 coincided w/ the end of the day.

NW	980.20	NE	15
19	below lot 1	980.24	
980.19	20	980.22	17
SW		SE	

1m x 1m
EVA
lot 2's final elevations

Tomorrow will have Beto & Roberto get into Lot 3, which also will be an arbitrary 20 cm or stop once they hit something of import. whatever comes first.

Over in Subop 05 w/ Elder Enrique Cantarero (Kike) and Jose Manuel Lada Verde. Starting w/ El A. lot 1. This lot is the same as 09/02/01 in terms of soil (clayey loam) and color (black to very dark brown). This lot is an arbitrary 20 cm (mas o menos). Some artifacts are interspersed throughout - ceramics and lithics but no stucco, bajareque, or obsidian. Closing elevations

* Datum was generally measured from EUS' highest corner which was usually the NW in 09/05 and the SW in 09/02

16 June 2005

are

NW	SW
25bgs	22bgs
NE	SE
19bgs	22bgs

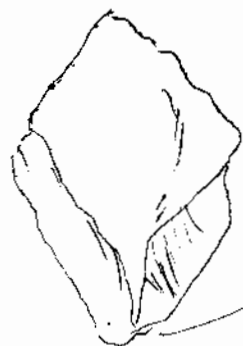
2005-06-08

	NW	NE	SW	SE
opening elevation	980.71	980.72	980.68	980.69
closing elevation	980.46	980.52	980.49	980.49

Datum was taken from NW corner

Lot 2 - was supposed to be another arbitrary lot of 20cm - was a mess. And coincidentally it terminated at the densely packed clay. This clay is a dark yellow brown and most likely represents a platform. Lot 2 is exactly like lot 1 but with less roots in it. In terms of artifacts, this lot contained a biface-like tool which was 44cm bgs, 28cm from the eastern wall and 19cm from the northern

sidewall. Despite locating this artifact in space, its placement does not seem intentional or meaningful in anyway.



6cm wide
9cm long

* back side of tool
is flat

→ possible
use
wear

Other artifacts encountered in this lot were ceramics and various other lithics. Alas no obsidian.

Closing elevations

NW	NE
18bgs lot 1	24cm
20cm SW	23cm SE

	NW	NE	SW	SE
opening elevations	980.46	980.52	980.49	980.49

closing elevations	980.28	980.28	980.23	980.26
--------------------	--------	--------	--------	--------

Tomorrow start Lot 3 in EU B.

To end the day ... the fences do seem to be keeping the cows out ... when we can remember to close the gate so.

17 June 2005

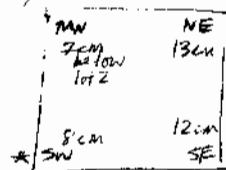
2005-06-09

Friday

Subop 2

Still in excavation unit A, new lot 3. This lot is under lots 1 & 2. In terms of soil, color, and content it is also the same as these lots. Ceramic sherds were identified, but these were too small and eroded to be collected. Lot 3 started out as an arbitrary lot 20cm masomenos, but this was not necessary as the densely packed clay indicating the presumed platform floor (which also appeared in 09/05 underneath lots 1 & 2) soon surfaced.

SW corner used to measure.



(closing)

Opening elevations

NW 980.20 NE 980.24 SW 980.19 SE 980.22

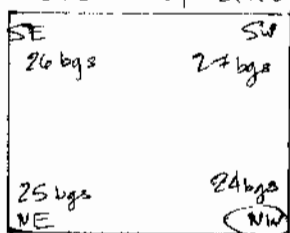
Closing elevations

980.12 980.06 980.11 980.07

these elevations are lower than the level of the clay in 09/05.

EU B is also 1m x 1m

After taking elevations (listed above), excavation was moved to EU B and lot 4 was started. Lot 4 was an arbitrary lot of 20 cm (masomenos). Same humus soil matrix as in lots 1-3, and EU B is similarly moving towards Structure 2 (south). This lot contained ceramics that were highly eroded and some lithics, but nothing else notable.



Datum measured from NW corner - this atypically appeared to be the highest corner in the unit.

Opening elevations

NW 980.63 NE 980.45 SW 980.60 SE 980.55

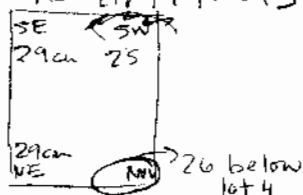
Closing elevations

980.39 980.38 980.36 980.37

17 June 2005

2005-06-10

After lot 4 was closed out in 09/02, EU B, lot 5 was started. This lot is more of the same humus, but it is ~~very dense~~ caps the dense clay believed to be the platform floor. Closer to the platform this humus contains fewer roots and virtually no artifacts - of the latter, none were collected.



Closing elevations not bgs but rather from below Lot 4. NW

ARTIFACTS
included 5 lithics
(ceramic sherds (cruddy)
and an obsidian flake)

Opening elevations

NW	NE	SW	SE
980.39	980.38	980.36	980.37

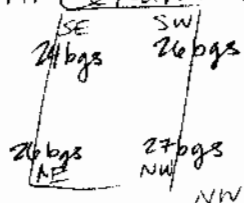
Corner still being used to measure

Closing elevations

NW	NE	SW	SE
980.13	980.10	980.14	980.10

The ending of this lot coincided w/ the end of the day - tomorrow for the half day we will start in EU C.
And in the other SUBOP...

09/05 Beginning excavation in EU B, a 1m x 1m on the southern facade of the northern Structure 3. This first initial lot is an arbitrary 20cm. It is comprised of the same soil matrix as Lots 1 & 2, clayey loam of a black to very dark brown. Ceramics were recovered - all rather cruddy and eroded



Datum from the NW corner

Opening elevations

NW	NE	SW	SE
980.80	980.76	980.71	980.72

Closing elevations

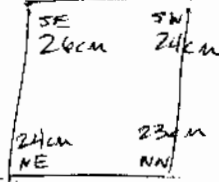
NW	NE	SW	SE
980.53	980.54	980.54	980.56

Began next lot 4 located beneath 09/05/03. Soil matrix is exactly the same as above. This lot caps the densely packed clay platform. Ceramics were collected but nothing else of note.

17 June 2005

2005-06-11

This lot was completed as the day was ending
Closing measurements were taken - not bgs but
rather from below lot 4



Opening elevations

	NW	NE	SW	SE
Opening	980.53	980.54	980.54	980.56
Closing	980.30	980.29	980.29	980.27

* Measurements taken from NW corner
Half day tomorrow... will begin in EUC

18 June 2005

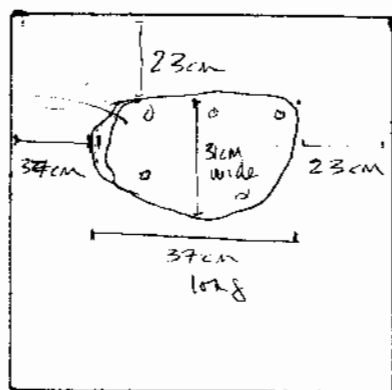
2005-06-12

Saturday - half day. Nice Sunny morning.

Starting w/ 09102, EU C. This EU is a 1m x 1m on the northern side of Structure 2, the Southern building. Lot 6 is the initial lot and opted not to do an arbitrary 20cm as EUs A & B have provided an idea of where the humus ends. The humus in lot 6 is the same as in lots 1-5, clayey and black to very dark brown in color. This lot contained ceramics and lithics but nothing else of note. In the center of the excavation unit a rock was uncovered. It was rather large and it is discussed here as uncovering largish cobbles is unusual at this site — the structures are all earthen. The cobble was 9cm hgs. It was 31 cm ^(NYS) wide by 37 cm ^(EXW) long, and about 17cm thick.

The cobble was 23cm from the west sidewall, 37cm from the east sidewall and 23cm from the south sidewall.

Not convinced
that this
stone has a
sculpted face, but
no one else seems
to agree



(S) Beto and Roberto pedestaled the cobble but found nothing beneath it or surrounding it. The stone seemed to be floating in the space that was the humus matrix. It was pulled.

(N) Once all of the humus was removed to the densely packed clay, elevations were taken.

SE 45bgs	SW 43bgs
NE 46bgs	NW 45bgs

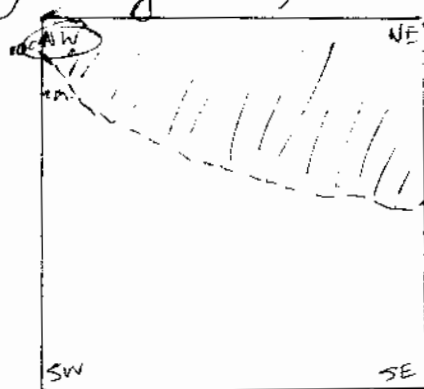
Opening elevations	NW 980.60	NE 980.55	SW 980.53	SE 980.57
Closing elevations	NW 980.08	NE 980.07	SW 980.10	SE 980.08

Datum was taken from the SW corner
Artifacts collected were some cruddy
ceramics and lithics. Start EU D on Monday.

18 June 2005

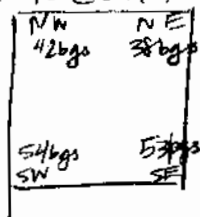
2005-06-13

Moving on over to 09/05, EU C. This excavation unit is a 1m x 1m, north of EU A & B. Lot 5 is an initial lot and it is not arbitrary. Rather, ~~all~~ all of the humus - black to very dark brown was removed as a single lot, using information gleaned from excavation units A & B. In the NE corner of the excavation unit, there appears to be a color change. This change perhaps indicates that we are coming up on the building's facade. Though more likely it is where the building slumped. Mike and Jose excavated through approx. 50 cm in the ^{North} eastern quadrant of the unit. But in the northwestern they got the beginning of it; ~~the~~ the slump seems to run at an angle.



It meets the edge of the densely packed clay platform. Comprised of a red-orange soil. This soil has some clay content, but crumbles into small-medium size chunks.

This lot contained ceramics, and nothing else of note.



Opening elevations at surface:

NW 980.85 NE 980.88 SW 980.80 SE 980.76

Closing elevations:

980.43 980.47 980.31 980.32

* Measurements taken from NW corner.

On Monday will start in EU D.

20 June, 2005

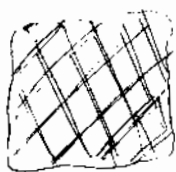
2005-06-14

Monday

Note to self, take all string w/ you at the end of the day. Learned this the hard way after finding that all string used to measure lot depths had been pilfered in our absence on Sunday.

In Subop 02, began excavations in EUD. This is a $2m \times 1m$ (N-E) unit. It was laid as such to avoid error and make Brianna and Nat's life easier, as they were laying out the very long 49m trench on a very hot day.

On the surface of this ^{the} structure begins to slope up. Thus this EU looks like it begins to come down on the building facade or slump. This next lot 09/05/07 is more of the same humus interspersed w/ roots that we have found in lots 1-6. There were varied artifacts uncovered in this lot, including ceramics, obsidian, and lithics/chert. The obsidian has a smoky color and most likely has an El Chayal source. Ceramics included a largish fragment from an incensario as suggested by the incised cross-hatching on one side. This fragment was found 58 cm bgs. It was 106 cm from the south wall, 59 cm from the east sidewall and 24 cm from the west sidewall. No other ceramics w/ a similar design were collected.



The lot was terminated at the densely packed clay platform. After doing so, I noticed that in the unit's southwestern corner there was a color change. It was very slight but extended from the unit's southern edge about 80 cm in the stratigraphy.

June 20, 2005

2005-06-15

It begins to thicken as it gets closer to the structure, or as it moves from north to south. It appears to be building slump. In the next EU (EUE) I will be sure to distinguish it as a separate lot.

Closing elevations

NW	NE
64 bgs	63
65	64
SW	SE

SW used to take measurements

Initial elevations at the ground surface:

NW 980.53 NE 980.57 SW 980.78 SE 980.69

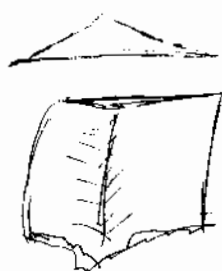
Closing elevations

980.14 980.15 980.13 980.14

This lot took the entire day to excavate and continued into the next day. Even though the closing elevations are noted here.

Subop 05 09/05/06

Starting excavations in EU D w/ lot 6. This lot is the same as lots 1-5, black to very dark brown soil w/ a high clay content. This was not an arbitrary lot, but rather went down to the known top of the building facade or slump. This lot contained a few cruddy ceramics and a fragment of an obsidian blade that had a smoky look to it, suggesting El Chayal as a source. Blade is possibly prismatic, though seems a tad off. In cross section it looks like this:



It is about 3cm wide and 3cm long. No exact provenience noted. Simply mixed in w/ humus.

20 June 2005

2005-06-16

Closing elevations were taken at the lot's termination
Measurements taken from the NW corner

NW	NE
29 bgs	40
46cm	39
SW	SE

Initial elevations from ground surface
NW: 981.02 NE 981.06 SW 980.85 SE 980.88

Closing elevations

980.73 980.62 980.56 980.63

After finished Lot 6 in EU D, moved to EU E to remove more of the humus and expose the building facade / slump. (09/05/07), EU E is another 1m x 1m unit. The lot is comprised as the same humus as in Lots 1-6. This lot is not arbitrary. It contained a dearth of artifacts, but did include some cruddy ceramics and a single lithics.

NW	NE
27 bgs	29 bgs
40	39
SW	SE

Opening elevations from ground surface
NW 981.14 NE 981.16 SW 981.02 SE 981.06

Closing elevations

980.87 980.85 980.74 980.75

Measurements taken from NW corner of unit.

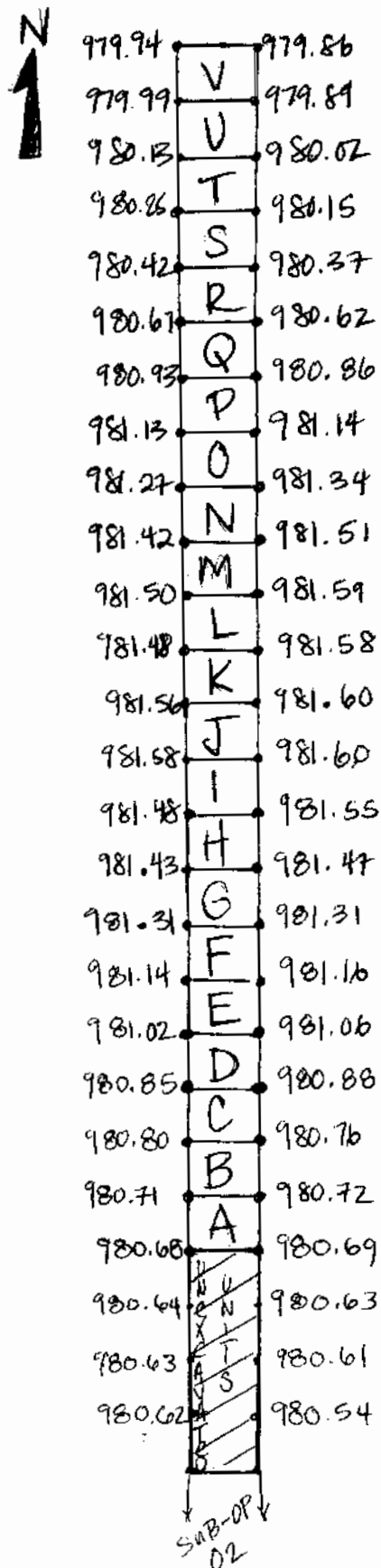
That brought us to the end of the day, w/ excavation. Continue tomorrow w/ lot 8 in EU F, as we move up the structure.

However, mid point in the day, the opening elevations or ground surface were not making sense. Points that on the ground looked to be lower appeared on the map as having higher elevation. In the afternoon, we got the EDM and reshot the points comprising 09/05 (see next page). Tomorrow we will reshot 09/02 in the morning.

20 June 2005

2005.06.17

Subop 5 elevations of excavation units' corners



* each unit is 1m x 1m
 * 22m ~~long~~ x 1m wide

K = Lot 20 (about the center of the building)

J

I = Lot 23

H = Lots 21, 22

G = Lot 9, 19

F = Lot 8, 16, 18, 25

E = Lot 7, 13, 14, 15, 17

D = Lot 6, 11, 12, 26

C = Lot 5, 10

B = Lots 3-4

A = Lots 1-2, 24

21 June 2005

2005-06-18

Tuesday

Today began w/ Shooting in the points for 09/02's Surface elevations. This task took about an hour in the morning. Units elevations and lot depths were recalculated. (Everything in the notes is correct.)

Op 09/02

Beto and Roberto are continuing w/ the excavation of the Surface humus lot. This comprises Lot 7 EUD is a $2m \times 1m$, so it is taking them some time. (See page 15)

Op 09/03

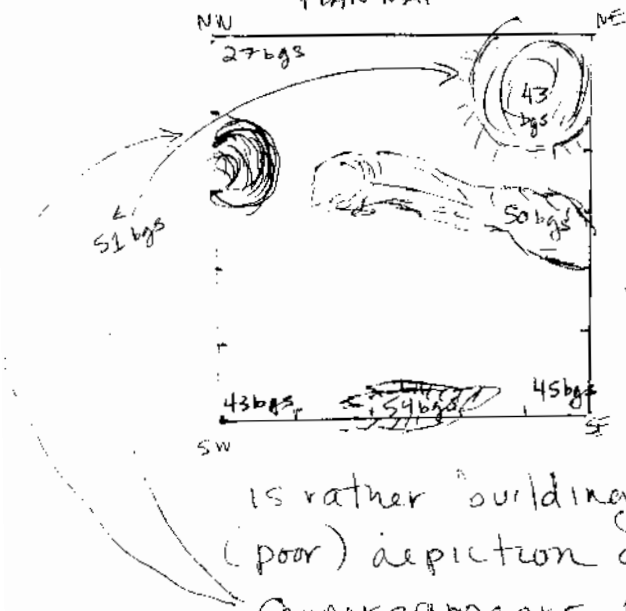
In Supop 5, Kike and Jose began Lot 8. This lot is the surface humus that is the same as what is found in Lots 1-7. The soil does seem a tad lighter, which may be on account of it being drier.

Closing elevations ~~on Lot 8~~ and some additional thoughts on Lot 8 can be found on the next page.

21 June 2005

2005-06-19

PLAN MAP



20cm

EVF

1m x 1m

09/05/08

Lot 8 ~~involved~~ involved removing the humus layer down to what was believed to be the facade of the building. However, it seems that this

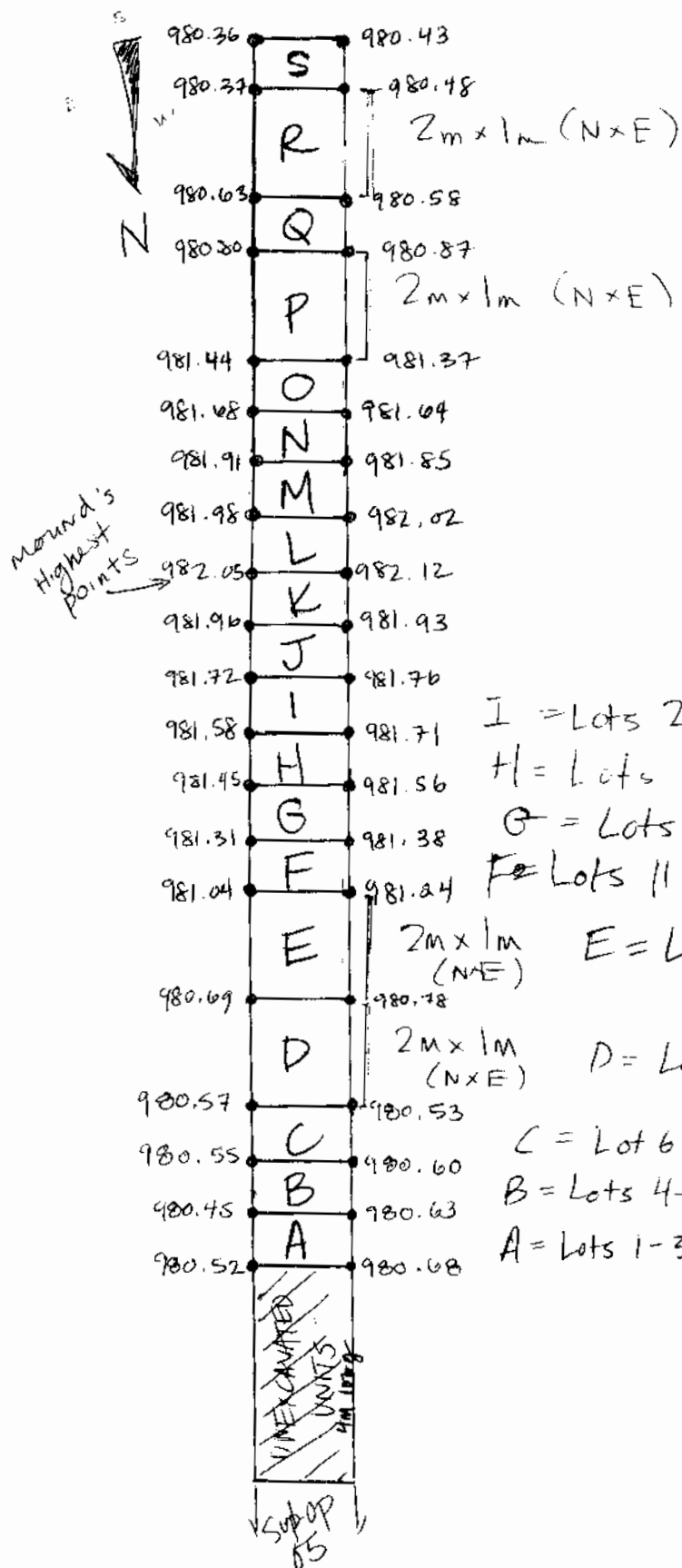
is rather "building slump". The above plan map is a (poor) depiction of the termination of the lot. The NE*NW corners appear pockmarked. A channel also seems to run across the unit from east to west. And finally a depression can be found bordering EU E north and EU F South. Based on this, I believe that the ^{soil} color change which began in the northern part of EU C and acted as a termination point for the rest of these EU's lots is actually building slump that is capping other architecture. A digital image was taken.

EU G was started near the end of the day. Lot 9 so far appears similar to Lot 8 in EU F, as it too is pockmarked. ~~involved~~ Loose soil was removed and it will be continued tomorrow.

21 June 2005

2005 06.20

Subop 2 elevation of excavation units' corners



* unless otherwise noted all EUs are 1m x 1m (N x E)

* 23m long x 1m wide

I = Lots 21, 22

H = Lots 18, 19, 20, 23, 28, 29

G = Lots 15, 16, 17

F = Lots 11, 12, 13, 14

E = Lots 8, 9, 10, 27

D = Lot 7, 26 (southern half)

C = Lot 6

B = Lots 4-5, 25

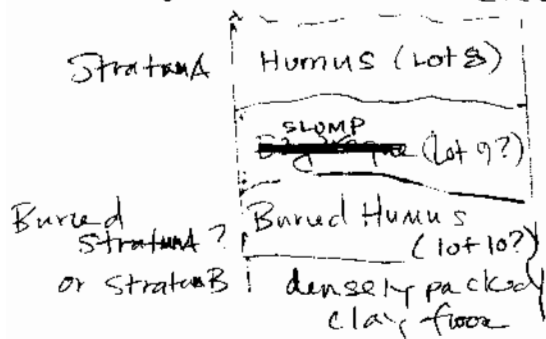
A = Lots 1-3, 24

32 June 2005

2005-06-21

Wednesday - The past two nights have been very hard rains. Perhaps coincidental w/ the full moon as workers (ie Dimas) have suggested. The tarps have been wonderful, and the exposed trenches have only gotten minimally wet. However, a few more hard rains and we might be swimming to the site as the Orote River has risen a bit. Lots of cloud coverage this morning, which hopefully will burn off later.

Supop 02 - Beto and Roberto have started excavation in EUE, 2m(N) x 1m(E). They are looking for 3 distinct strata - (1) the top humus which is the same as 09/02/1 turn 7; (2) a soil change which looks like bajareque slump in the stratigraphy of EUD; (3) a buried humus layer. This goes from 1 top to 2 middle to 3 bottom. and respectively will be lots 8, 9, & 10 provided nothing unforeseen is encountered.



Profile of Southern wall in EUD.

The lot designations will apply to changes in EUE

Lot 8 is more of the omnipresent humus interspersed w/ roots - again clayey ~~XXXXXX~~ ^{loam} and black to very dark brown. This lot was very artifact deficient. Only 2 shards were encountered. Ground surface or initial elevations:

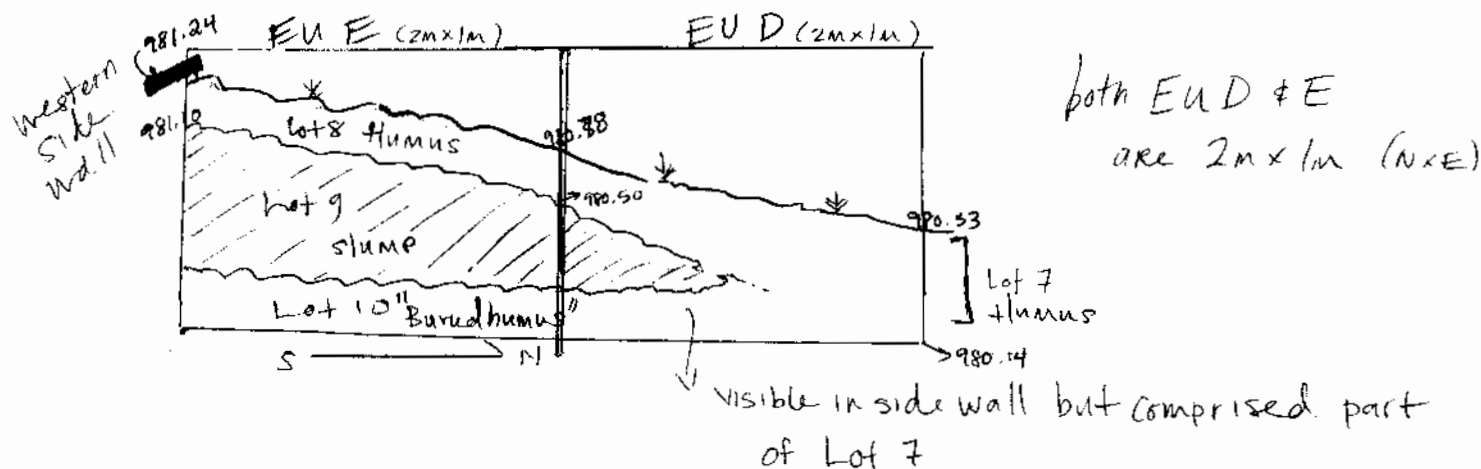
NW	NE	SW	SE
980.78	980.69	981.24	981.04
* The measurements were taken from the SW corner			
(losing; NW)	NE	SW	SE
186.50	980.40	981.10	180.93
[74 bgs]	[84 bgs]	[14 bgs]	[31 bgs]

22 June 2005

2005-06-22

A digital image was taken of the unit's northern stratigraphy (or EU D's southern stratigraphy) before excavations were began in EU E. This image will hopefully distinguish between Lots 8, 9, & 10.

09/02/09 Lot 9 is located beneath Lot 8 in EU E. Its Munsell/Color is 7.5YR between 5/6 & 4/6 which according to Munsell translates into strong brown. (though it does seem to have a tinge of orange int to my naked eye). This lot was first noticed in the side wall of EU D; it extended out from EU D's southwestern sidewall about 80cm, but was not very thick so it is easy to see how Beto & Roberto would have missed it.



This lot appears to be building Slump as there seems to be a buried humus strata beneath it (that will be lot 10)

This lot is an enormous one and will continue to be excavated tomorrow (6.23.05)

Artifacts recovered included ceramics, obsidian fragment, and carbon which seemed to be coming from the bottom of the lot

Excavation ^{of lot} terminated at the "buried humus", which is more and more looking like an intentional clay stratum.

22 June 2005

2005 06-23

09/05 ^{IN ENG} Kike and Jose continue to excavate - through the humus, which is lot 9 (this is the same as lots 1-8); the only difference being this soil seems slightly drier and as a result a tad lighter in color - so "very dark brown" instead of "black to very dark brown". The idea is to take this down to the slump/building facade.

However, the humus keeps extending down further than in EU F. In the sidewall this seems homogeneous in color and texture with 2 exceptions. ① Like EU F there are pockmarks that appear (but in the sidewalls); ② There are ^{rough} balls ~~xxx~~ comprised of loosely held together orange & white clay about ⁵10cm in diameter - these appear in cross section in the sidewalls. The lot was terminated arbitrarily after about 80cm in the northern profile, as it is uncertain where it ends. Just as lot was being terminated carbon started to appear in the southeastern quadrant. Carbon was collected, though little else was, as this lot seems rather artifact deficient.

Possible interpretations about why the slump ends abruptly in EU F and the end of the humus cannot be located in EU G - where in fact part of the building should be as this unit is located almost on top of the mound...

There are a few possibilities. ① A large tree was situated on top of Structure 3 and either burned down or fell over. The area where we are finding nothing but humus might represent where the root ball once was and the pockmarks in the side wall can be the spaces where roots once penetrated. ② Looters put a large trench through the top of the mound - though it would seem that we would be seeing

June ²² ~~22~~, 2005

2005-06-24

more of a depression in this area on the ground surface. And the ground surface unexcavated did not suggest as much. ③ It is possible that this mound sustained damage in the past from a tractor, as is the case w/ other structures @ Las Orquideas. To get a better idea of what is going on here, I decided to bring the trench down starting back in EUC where the densely packed clay ^{first} met the slumping building. The idea taking the slump off as we go up the building. This will be started tomorrow.

This was actually done on June 24
Closing elevations were taken on Lot 9 and we will return to this EU later to continue to find the end of the mounds

	NW	NE	SW	SE
Initial elevations	981.43	981.47	981.31	981.31
bgs	80cm	80cm	84cm	82cm
L Closing elevations	981.03	981.03	980.99	981.01

It has been raining really hard at night so let's hope all stays dry and secure under the tarps. Moreover, it has been raining on and off all day making for lots of mud.

Other side note... today 2 rancho hands led a herd of very large adult cows and a bull through the field to graze. All loomed close to the trenches, but the barb wire fences seemed effective.

23 June 2005
Thursday

2005-06-25

After downpour last night, just as Carmen Julia of the Instituto pulled up w/ crew for a tour. Getting out to Las Olguideas was done w/ some trepidation today as the river had indeed risen. The truck pulled through w/o event though a few more heavy rains and we might be walking (or swimming) to the site.

Once we got here - after walking through much mud - we found 3-5 cm of standing water in the trenches on Structures 2 & 3. Fortunately, this water, which was run-off from the torps, had pooled in places that was no longer being excavated. In Str. 2 (09/02) it was mostly in EUs A & B, while Str. 3 (09/05) had water in EU A. Water was bucketed and dumped out. Afterwards, excavations continued.

CP 09/02

Excavations continued in Lot 9, which seems to be either building slump or part of a later architectural renovation. This clay is strong brown in color (according to the Munsell chart; 7.5 YR between 5/6 & 4/6). This lot ended atop another layer of black to very dark brown clay.

recap of: Originally, this clay was designated "buried humus", but now it is thought to be an intentionally laid stratum that caps the final barro, which comprises the plaza floor (Munsell 7.5 Y between 5/4 & 5/6 - olive yellow to light olive brown). The dark clay will be a separate lot - LOT 10.

CP 09/05

Lot 10 was begun in EU C. This lot is excavating into the slump in order to hopefully ~~expose~~ expose undisturbed building facade. This lot is a combination of slump and the very dark brown humus - so clay and clayey loam.

23 June 2005

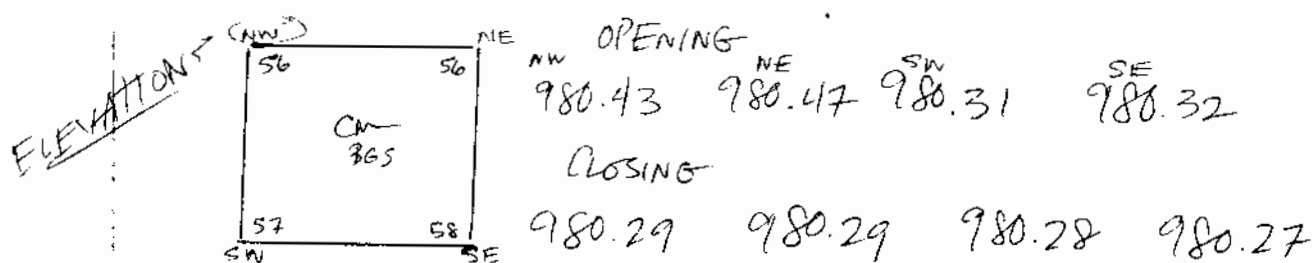
2005-06-26

dark brown to
7.5 YR
5/6 to 4/6

The slump is a combination of orange clay (or "strong brown" in Munsell speak) and smallish clumps of bajareque sporadically interspersed. This lot was terminated at the densely packed clay that comprises the plaza floor.

ARTIFACTS

Few artifacts were recovered. Some bajareque, chert, lithics, and obsidian but surprisingly no ceramics were recovered.



*Measurements taken from NW corner. Original ground surface in the NW corner was 980.85.

09/05/11
EOD

We then proceeded to move over to EUD (m x m). This lot is the same as Lot 10. — building slump of orangey clay, mixed w/ some bajareque and humus. It is also clayey loam. However what is different appears to be a "buried humus" stratum sandwiched between this lot and the densely packed clay. Hence, a soil change so the lot 11 was terminated.

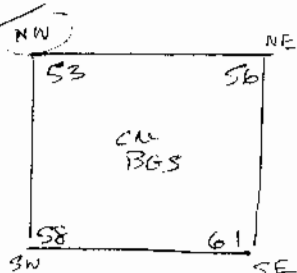
23 June 2005

2005-06-27

ARTIFACTS

As w/ lot 10, artifacts were present but not abundant. Ceramics, Jajareque, and lithics were collected, but nothing was particularly noteworthy.

ELEVATIONS



OPENING
 (NW) 980.73 NE 980.62 SW 980.56 SE 980.63
 CLOSING
 980.49 980.46 980.44 980.41

*Measurements were taken from the NW corner. Original ground surface 981.02.

09/05/12
 EUD

As aforementioned, Lot 11 was terminated when a soil change was uncovered. Lot 12, directly beneath this Lot 11, appears to be a ^{possible} buried humus stratum. The soil is clayey loam, but seems to be more clay than loam. And it is black to very dark brown in color. This lot is designated "buried humus" as it appears to be no different from the humus located closer to the surface w/ respect to color, texture, and inclusions.

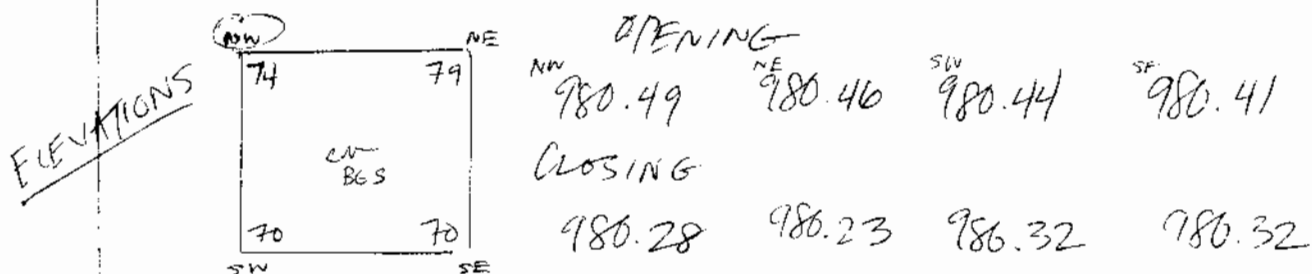
In the NE Corner of the unit, an orange and white clay lens appeared. This was sandwiched between carbon lenses or burn strata. These various

23 June 2005

2005-06-28

~2105112
EUD
were exposed only slightly, and we will pay close attention and carefully expose them in the next EUE.

ARTIFACTS Again a dearth of artifacts. Only ceramics were recovered.



* Measurements taken from NW corner. Original ground surface 981.02.

Lot was terminated when the yellowish-brown clay of the plaza floor was exposed. This brought us to the end of the day and tomorrow we will begin in EUE w Lot 13.

24 June 2005

2005-06-29

Friday — half day as we are off to Copan in the afternoon. What a mess this morning at Las Orquideas. There was 20 cm of standing water in both trenches. First, had to discover how the water was getting in the trenches. The tarps seem to be keeping the rain from filling the trenches. Water actually seems to be coming in from the floor and sidewalls. And the ground at ~~Las Orquideas~~ Las Orquideas did seem considerably more saturated and mucky today.

^{09/02/9}
EVE Bailing out units left little time for excavation, though Beto and Roberto did manage to finish up lot 9 in EVE, a 2m x 1m (N x E). See p. 22 for closing elevations and additional information.

Interpretations

This lot was an enormous one and in retrospect it contained two distinct construction episodes. The color differences ~~are~~ are one indicator, as is the soil type/inclusions. First, there is an orangey (strong brown) clay. The interface between this and the humus seems to be comprised of bajareque. ~~Below the orange clay there is a layer of humus.~~ It is difficult to determine if these are undisturbed, but it seems that both are slumped down from an original structure.

24 June 2005

2005-06-30

09/09/13
EUE

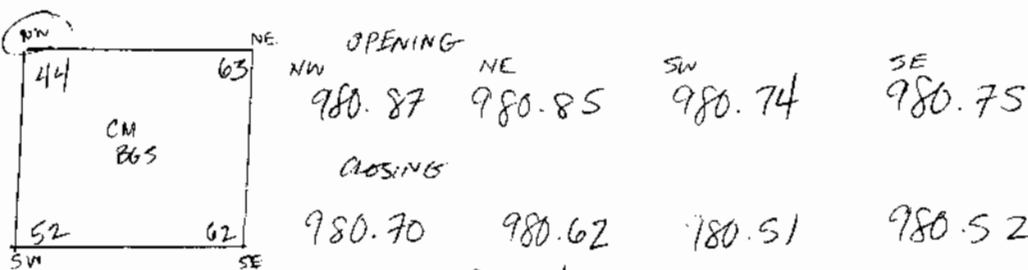
In 09/05, Kike and Jose got to work on Lot 13. This lot is exactly like Lot 11. It appears to contain buildings slump; however it is comprised of humus mixed w/ orangey ("strong brown" clay) and there appears to have petered out.

As was noted earlier, there appears to be interesting things going on beneath the slump, which necessitated a lot change. Because of the half day this all will be commenced on Monday June 27. The short work day allowed for the removal of the slump and the recognition of a carbon lens which will be lot 14. This carbon lens was first noted in the eastern section of the unit, particularly the Southeastern corner of EUE.

ARTIFACTS

Artifacts in this lot included some b. j. a. r. e. q. u. e., obsidian fragments, ceramics, lithics, ground stone, and carbon. The latter is probably more closely associated w/ the next Lot 14

ELEVATIONS



*Measurements taken from the NW corner of the trench.

Original ground surface 981.14

Monday

24 June 2005

2005-06-31

River was crossable today and we are praying for a nice dry sunny day so that it comes down a little. The trenches could benefit from this as well as there was a little more than 30 cm of standing water in both Subops 2 & 5. It took forever to bail out. Subop 5 does not seem to collect as much water. Kike and Jose bailed it out, and afterwards Kike helped the guys in Subop 2. Jose leveled out the saturated clay in the bottom of the units. In Subop 2, there seems to be a real problem w/ water - it comes in from the sidewalls and ~~the~~ bottom of the trench. This trench seems to be located at a low point in the site. There was considerably more standing water throughout Las Orquideas this morning, as the ground is very saturated and it rained all weekend.

To get the water out of the trench a tube was used to create a siphon. However, it did not meet w/ much success for various reasons.

The trench in Sub-op 3 ~~experienced~~ ^{experienced} similar problems w/ water, but fortunately Sub-op 1 where Brianna is working was dry except for a small part in the southern section.

~~The~~ The tarps were untied to ~~give~~ ^{give} the trenches some exposure to the sun and air so hopefully they dry out a bit.

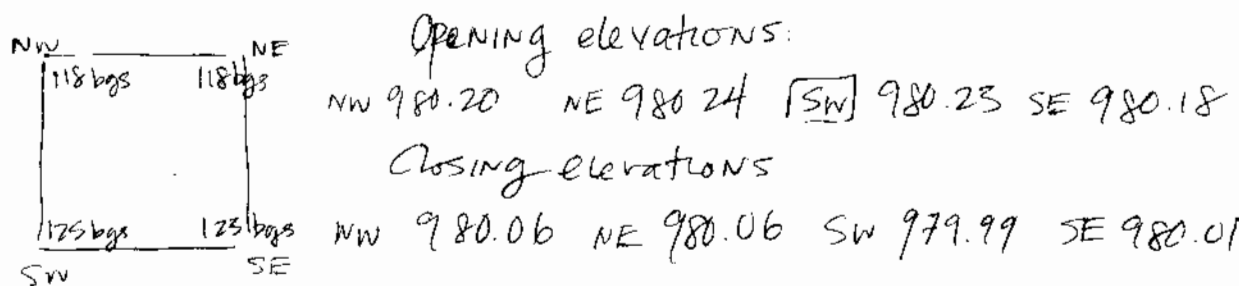
27 June 2005

2005-06-32

09/02/10
EU E

In Subop 2, Lot 10 was taken out. It is thought that this lot is a buried humus lot but this might need to be rethought in the future as it is very consistent. Which is to say that it is same thickness from one end of the unit to the other. I asked Beto and Rober to remove it completely as it extends down, or caps, the barro - the densely packed clay that is thought to be the ~~plaza~~ ^{Plaza} floor. In doing so, I found out that they had not removed all of buried humus from other excavation units. EU E is about 20 cm lower than EU's D. It is also possible that this discrepancy can be explained by water filling the trench and soil, though I think it really is more of a matter of incomplete removal.

No artifacts were recovered.



* Measurements taken from SW corner

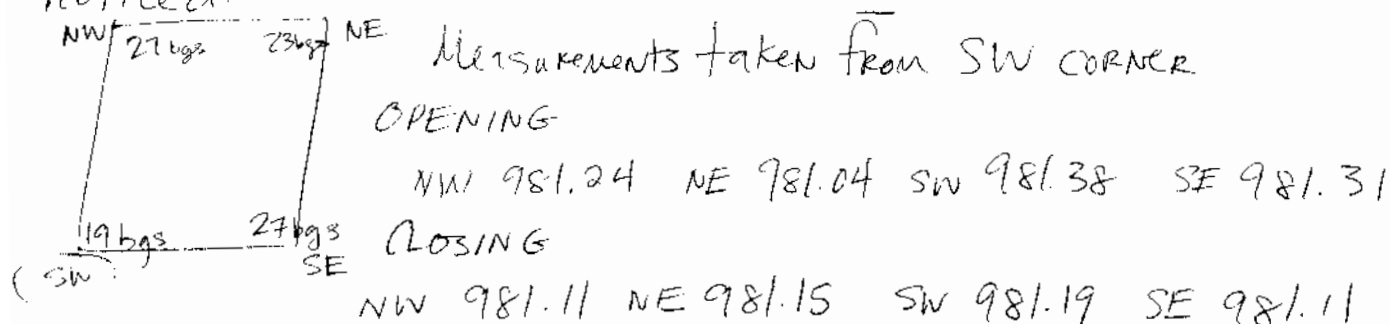
This lot is clay and black to very dark brown in color.

After this lot was terminated, excavation began in

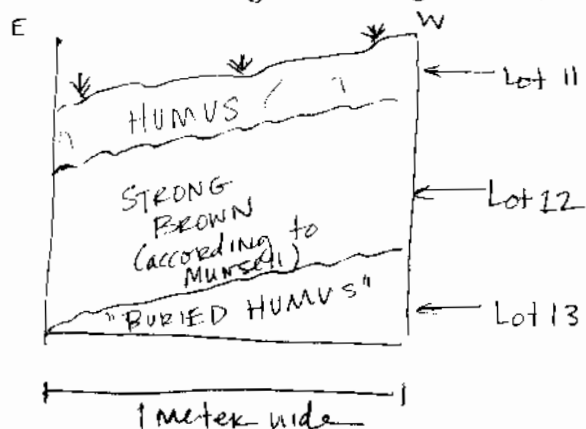
27 JUNE 2005

2005-06-33

09/02/11, EU F. This EU is a 1m x 1m unit in Structure 2. It is initial lot, comprised of overburden of humus interspersed w/ roots. The soil is clayey loam and very dark brown in color. No artifacts were recovered from this lot. Lot was terminated when perceptible change ~~in~~ in soil type and color was noticed.



Before excavating EU, looking at the Northern edge the following stratigraphy was visible:



Same EU F, but 09/02/12. This lot is a continuation of EU E's lot 9. Possible that lot is comprised of either slump and/or the actual fill of a structure. It is difficult to distinguish. The material is clay and there appears to be a sloping surface in the sidewalls. The color is varying shades of strong brown. As this material gets closer to the upper humus layer it seems to get more mixed together. Excavations in this lot

27 June 2005

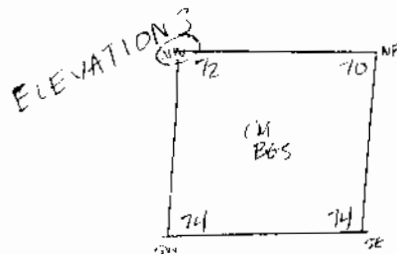
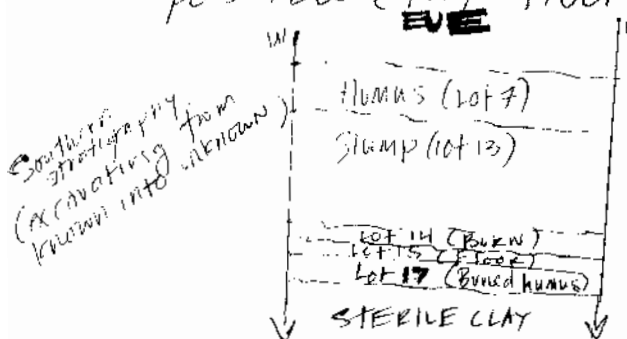
2005-06-34

will continue tomorrow, as the day ended before its termination.

OP 09/05/14, EU E

Lot 14 appears to be a burn lens, comprised of clay and carbon. It is black in color. The lot was located beneath the slump. It appears to be more concentrated in the southeastern corner of the unit, but is dispersed throughout the entire unit. It is at the same level as the burn layer encountered in ^{association w/} 09/05/09, EUG (or more accurately it was below Lot 9. In the unit's Southern Stratigraphy this carbon lens sits directly on top of a clay lens - is this possibly a floor? - which itself is on top of the "buried humus". The possible clay-floor will be removed as lot 15.

ARTIFACTS: Artifacts recovered included carbon, some bajeague, ceramics, and lithics



OPENING			
NW	NE	SW	SE
980.70	980.62	980.51	980.52
CLOSING			
980.42	980.40	980.44	980.44

* Measurements taken from the NW corner. Original ground surface 981.14

Tuesday

28 June 2005

2005-06-35

River was almost uncrossable this morning as the skies opened up again last night. But today did dawn bright and sunny w/ a light breeze so this hopefully is a promising sign. Once the river was crossed we found that the road up to the Las Orquideas hacienda had partially turned in a new branch of the Ocote. We dubbed it Rio Santiago to commemorate Santiago's driving, or fording abilities, as he successfully got us across the river.

At the site, there is much standing water, including an ^{over} increasing pond in the center of the site that we named Lago Orquideas. The trenches... In sub-op 5 there was about 20 cm of standing water that spanned from EU A to E. In sub-op 2 there was 36 cm of standing water (almost to the top of the units) that spanned from EU A to E (7 m long). Nat's subop 3 also had about 30 cm of standing water in its first few excavation units. Fortunately, Brianna's subop 1 had only a little. Bailing water out of the unit took about an hour. With all of this in mind, I am considering closing subops 2 & 5 after this week. I will see what the rains are like tonight. However, if it does continue to rain hard, the rising river might make the decision for me.

Tuesday

28 June 2005

2005-06-36

Once the trenches were bailed out, excavations could begin.

09/02

Beto and Roberto continued w/ excavations

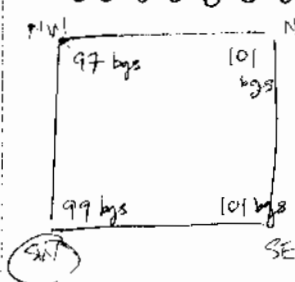
in EU F, lot 12. This lot appears to be building slump. It seems like a rather thick lot; there are perhaps slight color distinctions w/in it, but nothing worth separating into different lots. The color changes seem to be the result of proximity to the humus layer.

The humus ends and there is a change ~~which gradually becomes stronger and more orange~~ which gradually becomes stronger and more orange. In the sidewall, the building looks sloped as the structure appears uniform w/o too much slump or subsequent damage.

So it is possible that the stratigraphy is revealing two different things. An original building ~~and~~ ^{or} the slump from walls coming down; ~~the latter~~ ~~perhaps additional exposure in other EUs will clarify.~~

Few artifacts were recovered from this lot.

Lot terminated at soil/color change - ~~an earlier construction~~ ~~beneath~~ ~~phase or building capped by slump~~



NW 981.11 NE 981.15 SW 981.19 SE 981.11

CLOSING

980.41

980.37

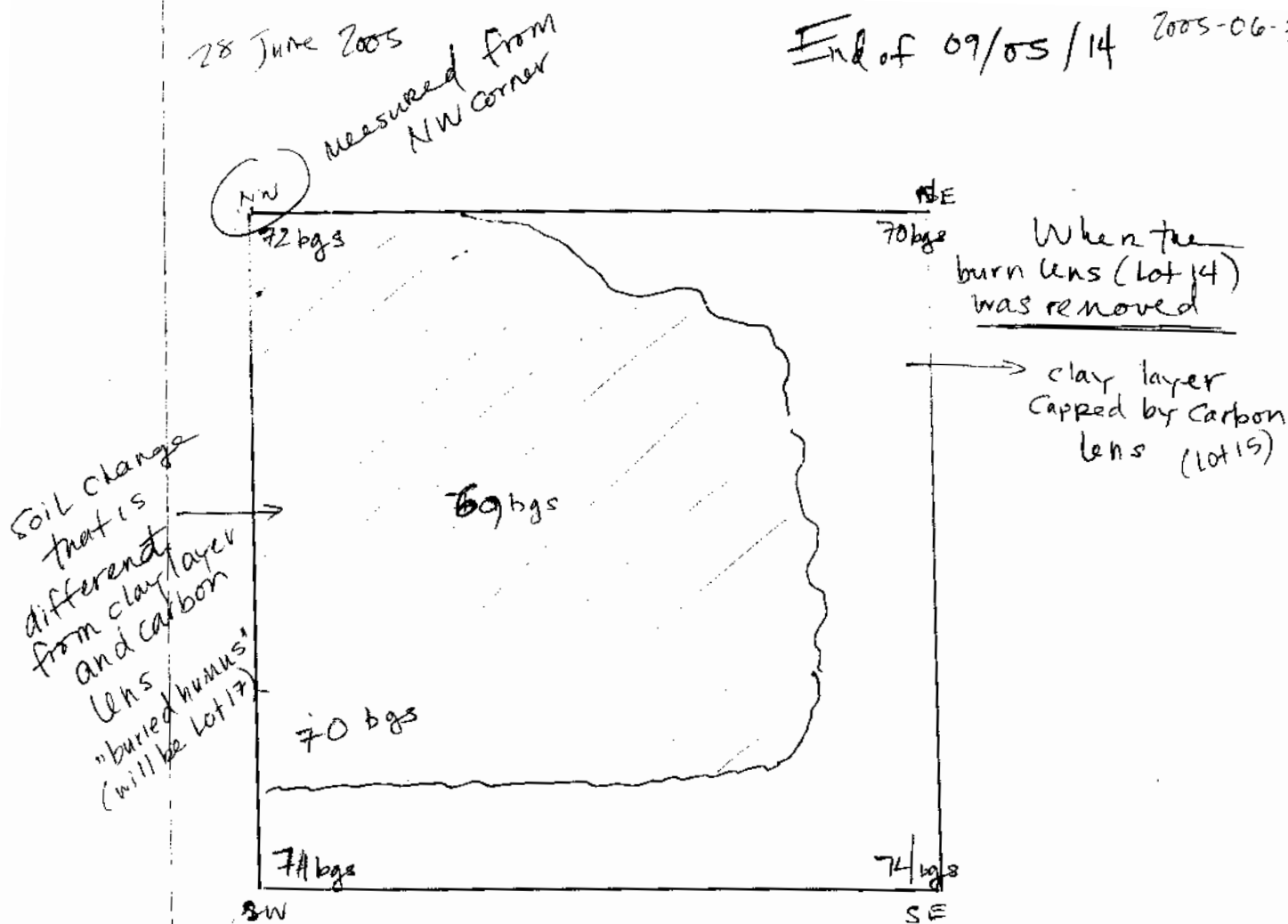
980.39

980.37

Measurements taken from SW corner.

28 June 2005

End of 09/05/14 2005-06-37



In Subop 5, Kike and Jose continued excavating the burn lens. Unfortunately, last night's rain and subsequent filling of the unit did not permit us to take carbon samples. In addition to carbon (which had been collected yesterday), we also recovered some bgyareque, ceramics, and lithics. The burn lens appears most concentrated in the southeastern part of the unit, but it is dispersed throughout. It seems to be at the same depth as the evidence of burning in EUE, below lot 9, as aforementioned.

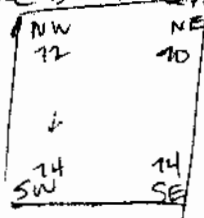
This burn lens in EUE capped a orange and white clay lens and, below this appears to be a dark brown clayey loam. In removing the black carbon lens

28 June 2005

2005-06-38

The ~~parameters~~ ^{PLAN MAP} of the orange and white clay were exposed. (see previous page). This clay stratum is not distributed throughout the unit but clings to the northern, eastern, and southern sides.

The burn lens's closing elevations



Initial elevations of lot

NW 980.70 NE 980.62 SW 980.51 SE 980.52

Final elevations of lot

NW 980.42 NE 980.40 SW 980.44 SE 980.44

Measurements taken from the NW corner which at the ground surface was 981.14

The termination of this lot 14 was followed by the excavation of Lot 15, a very thin lot that comprised the orange and white clay. As aforementioned, it was unevenly distributed. It also was of varying thickness - between 5 and 15 cm. The SE corner has a concentrated area of this clay that almost sits atop the densely packed ^{yellowish brown} clay believed to be the ~~platform~~ ^{PLAZA} floor. There is so much mud and wetness in the unit that it is making things difficult to see. Very few artifacts were recovered from this lot.

ARTIFACTS

2 ceramic sherds one of which was a mammiform leg.

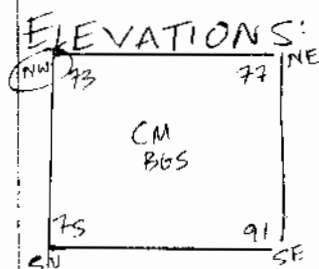
We are waiting to excavate the lot below this - the buried humus - as water in the unit is interfering and may have obliterated what was a 2nd carbon lens, or at least believed to be a second carbon lens beneath the possible clay floor.

This information is also on p. 34

09/05/15
EUE

28 June 2005

2005-06-39



OPENING
 NW 980.42 NE 980.40 SW 980.44 SE 980.44
 CLOSING
 980.41 980.37 980.39 980.23

*Measurements taken from the NW corner. Original ground surface is 981.14.

As can be seen from the elevations, the clay floor was fairly thin or poorly preserved. However in the Southeast corner of the unit, there seems to be an abundance of the clay that continues to drive down rather than proceeding linearly. This is interesting and unexplained as of yet and I will have to return to it if the unit dries up a little. In the meantime, on to Lot 16 in EUF

59/05/16
 EUF

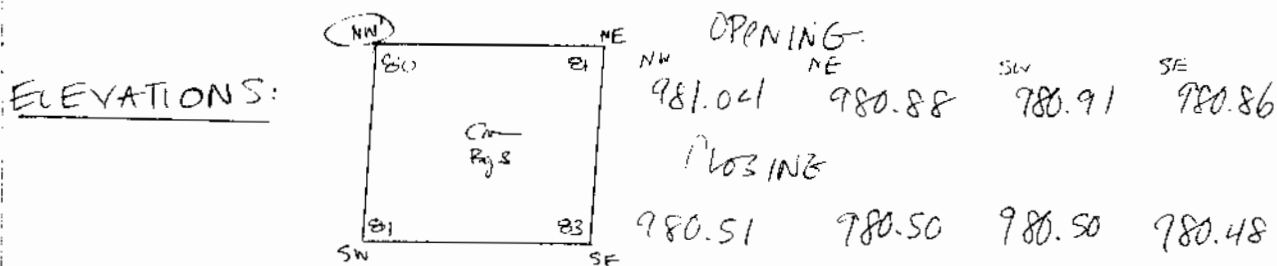
It is difficult to say what is going on in this lot. It seems to be a tremendous mix of everything w/ no discernible soil differences. It has carbon pockets, and orange & white clay pockets (that seem associated or were once part of the floor [Lot 15]), and clayey loam comprising the humus. The predominant soil type seems to be the third variety of clayey loam. How frustrating! As it seems that the building has disappeared. Is it possible that Structure 3

28 June 2005

2005-06-40

Is not an ancient building, but rather the modern product of tractor activity? I will call this lot's depositional significance Building slump but do so w/ not much certainty. Something strange is going on here and this structure is looking less and less like Structure 2 (09/02), which suggests that Structures 2 & 3 were not a ball court when taken together.

ARTIFACTS: This lot did contain some artifacts. Carbon was collected, as was some bajareque, lithics, and ceramic.



*Measurements taken from NW corner. Original ground surface is 981.31

Lot was terminated arbitrarily as there seemed to be no end in sight. Will continue w/ this tomorrow as a different lot, and I also hope to return to EUE to finish w/ the "buried humus" provided the unit is dry and mud-free.

29 June 2005

2005-06-41

Wednesday - Mike came to the house before dinner last night to say he would not be at work on Thurs because he had to plant a part of his milpa that only he was familiar w/ - So down one worker. But Eduardo Bautista, a 13 year old student in the colegio was a tremendous help. Free child labor though I like to think of it as an apprenticeship. EB is part of the group organized by Mike (Sullivan) UDAP: w/in UDAP he is in the group that wants to pursue excavation. So I put him in the unit (09/051) w/ Jose who instructed him in the finer points of excavation technique, artifact identification, and carbon collection. He has been coming to the site w/ us this entire week as school is on vacation, and he has been very enthusiastic and helpful.

On to the excavations

OP 09/02/13, EU F continuing w/ a new lot which is the ~~an~~ structure facade and its fill. This soil is clay and according to the Munsell its color is light olive brown to olive yellow (1R 2.5Y, 5/6 to 6/6). This lot seems to have a step in the stratigraphy. So it is possible that the building is stepped. This lot was terminated at the top of the black clay, which originally was thought to be

It is a different color than Lot 12; the shading seems more yellow than orange. It also seems a little speckled.

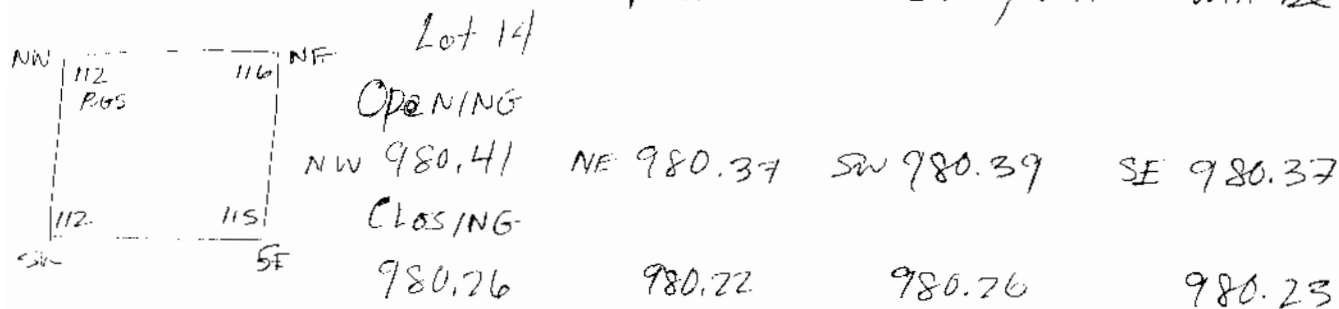
29 June 2005

2005-06-42

is buried humus layer. But ~~now~~^{now}, the layer is believed to be an intentionally deposited clay of black which sits atop the original barro of densely packed yellow clay.

This lot contains ...

Lot was terminated atop the black clay which will be

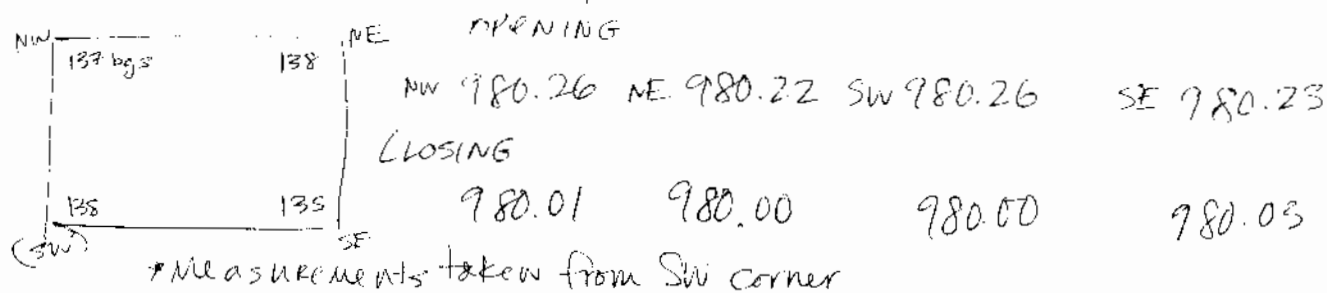


09/02/14, EU F

This lot is the intentionally-laid black clay - it is sandwiched between the base of the structure and the densely packed final barro. Perhaps this layer of clay functioned to prevent water from rising up. Just a thought... or could just be sick of the rain & rising water.

No artifacts recovered

Lot was excavated quickly



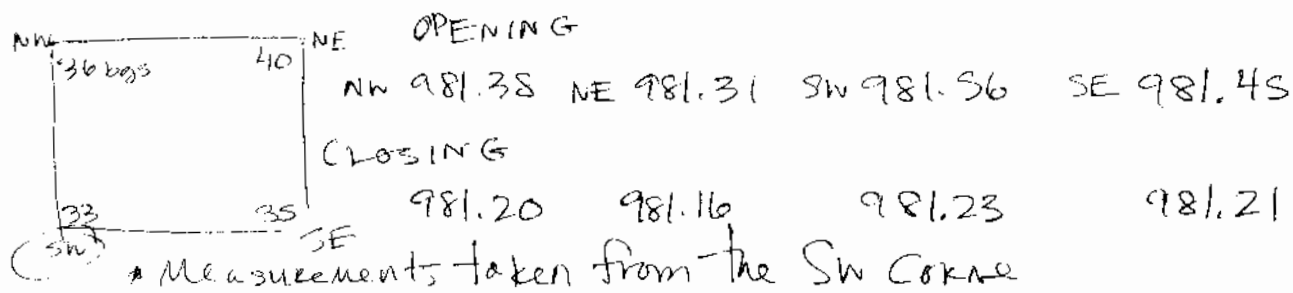
Moving into the next EU - 09/02/15, EU G is another 1m x 1m going up Structure 2. This lot is comprised of the overburden, or humus interspersed w/ roots. The humus

29 JUNE 2005

2005.06.13

in this lot appears to be closer to the surface. So a thinner coating of it is found here than has been encountered elsewhere on the structure. By accident Roberto & Betó also removed some of the bajareque mixed w/ humus—about 10-15 cm in the western half of the unit. Hence a lot change was initiated. There were no artifacts recovered from this

clayey
loam
very dark
brown
according to
Mun. 2011



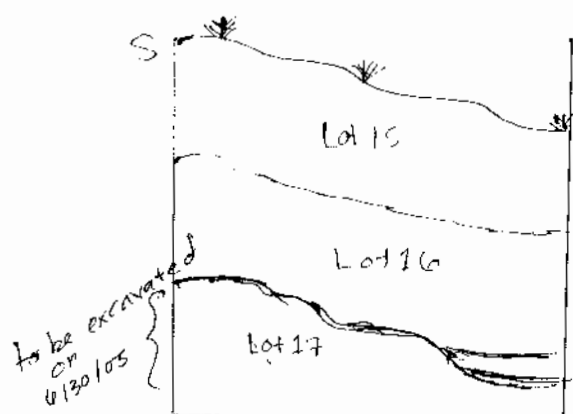
Lot change - 09 / 02 / 16, EU G—after finished excavating humus/over burden. Lot 16 appears to take us into the building's fill. Lot 16 is clay and is strong brown [7.5 YR 5/6 to 4/6] in color.

In profile the building appears to continue ~~and seems like it may be stepped~~ ~~and seems like it may be stepped~~. There are possibly two steps. This clay seems different in color from clay encountered earlier excavation units. Earlier encountered clay appeared orangey, while the clay excavated in EU G has more of a yellow color to it. This yellowish clay appears to be capped by the orangey clay. So it might be that this ^{orange} clay is dump, as aforementioned, or it might be an intentional architectural renovation. The orangey clay does not seem stepped, but rather sloped. Beneath the yellowish clay is a clay stratum that is black in color; this will be the next Lot 17

29 June 2005

2005-06-44

In the western sidewall the Lots fit together like such:



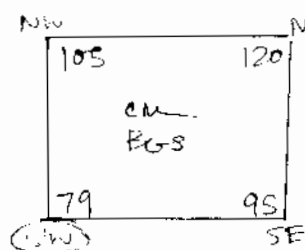
Lot was terminated at the interface between "strong brown" clay and black clay. Lot 17 will be started tomorrow

7.5 YR 5/6 to 4/6
"STRONG BROWN"

ARTIFACTS

- This lot contains Carbon which was collected from the Southwestern corner of the unit. Three cruddy lithics were also collected

ELEVATIONS



OPENING
NW 981.20 NE 981.16 SW 981.23 SE 981.21
CLOSING
NW 980.51 NE 980.36 SW 980.77 SE 980.61

*Measurements taken from the SW corner

DP 09/05 And in the other subop.

Returning to EU E, unit was dry enough to allow for further excavation. Lot 17 sits atop the densely packed yellowish brown clay believed to be the plaza floor. This lot 17 approximates the intentionally buried humus which I have begun to suspect is an intentionally buried clay that is black to very dark brown color. This seems to be the case in Subops 2 and 3, as well. However, I use the word approximate because this lot seems a bit more

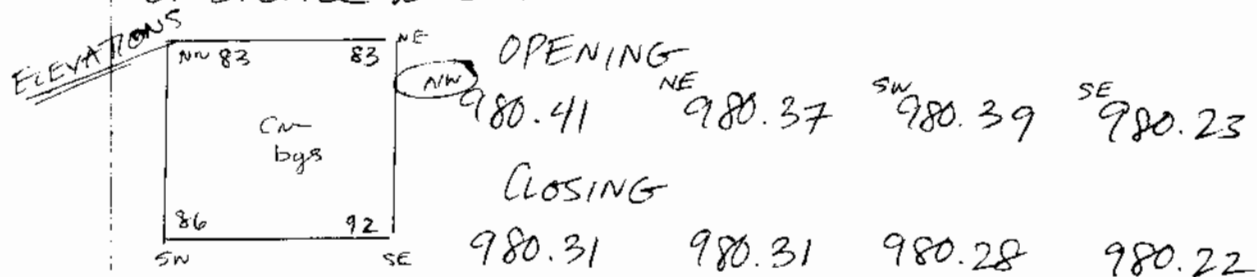
29 June 2005

2005-06-15

mixed and random than other manifestations of this intentionally laid clay. In other words, the boundaries are more challenging to discern.

ARTIFACTS: Not much was recovered from this lot; ~~2000~~ 3 ceramics and 6 pieces of lithics. Carbon was interspersed throughout the lot and was also collected.

Lot was terminated at the densely packed yellowish-brown clay of the possible plaza floor / or sterile base.



* Measurements taken from NW Corner. Original ground surface was 981.14

09/05/18
EUF

After EU E was thoroughly excavated, we returned to EU F. This Lot 18 looks like more of the same thing from Lot 16. It is a tremendous mix of varied deposits. There seems to be no rhyme, reason, or discernible linearity / separations in the units' sidewalls. What is going on and where is the building? There does seem to have been much bioturbation here that was possibly the result of insects making houses, mostly ants. The sidewalls

29 June 2005

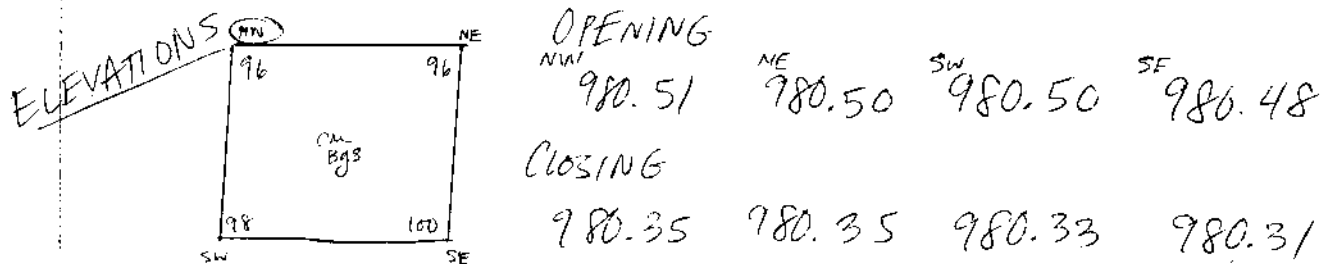
2005-06-46

do contain medium to large pockets of looser soil (about 15-30cm in diameter). It is possible that bioturbation has churned up the building. The floor, for example is possibly very, very faint in the sidewall. We will look for it in the next EUG, and hopefully ants will not have eaten it there.

The one consistent thing is that this lot caps the densely packed yellowish-brown clay. Otherwise, the lot is comprised of very dark brown soil (clayey loam), pockets of ~~clay~~ clay, carbon. POSSIBLE CONSTRUCTION FILL?

ARTIFACTS

While much carbon was collected, it was not concentrated in any particular location. Few other artifacts were recovered — some ceramic sherds, bajareque, and lithics. Some of the lithics seem to be crystalline.



* Measurements taken from the NW corner. Original ground surface 981.31

07/03/19
EUG

When this lot was finished, we were able to start another lot in EUG, Lot 19. It is located beneath Lot 9 and is very similar to Lots 16 & 18. We will continue with it tomorrow...

30 June 2005

2005-06-47

Thursday - Spent much of the morning helping Brianna drawing the stratigraphy of her western side wall. Once she got the hang of it, the drawing went pretty fast. Her trench's stratigraphy is very confusing. I probably should have had her start excavations at the northern half and not the southern one. It is difficult to tell if the trench is on or off the structure [Structure 1] and where the ramp begins or ends... or if Structure 1 has a ramp at all. Next year, I hope to excavate the northern $\frac{1}{2}$ of the trench or put another trench (or two) elsewhere on the structure. Maybe behind the structure, or straight down the ramp, or near the structure's corners. She will be drawing everything - more or less - w/ the exception of 3 lots which are being kept open for additional excavation after her departure. These are Lot 40 (EUA), Lot 36 (EUE), and Lot 32 (EUG). To draw we ^{fixed} ~~staked~~ a string ~~to~~ to the highest stake which coincidentally was the NW-most stake in the trench (EUG). This was made level and pulled down to the end of the trench. It was set up on the Western wall. A stake (about 2m) was placed at the ^{bottom} ~~end~~ of the trench to anchor the leveled line. A 50m tape was then attached between these two stakes and each

30 JUNE, 2005

2005-06-48

10cm was marked on the string w/ a Sharpie. From the string to the ground surface was first measured and so on and so forth. This method for measuring was used in each trench when drawing section profiles.

OP 09/02

After finishing Lot 16 at the end of yesterday, Lot 17 was started at the beginning of today. Of course, that was after bailing out the ubiquitous water. This lot is in the EU G and is ~1m x 1m. It is located beneath Lot 16. It is black clay, and seems to be construction facade/fill.

below ↓ Lot 17 is sandwiched between the densely packed clay of the presumed plaza floor and the above → clay that is more orangey-brown in color. Perhaps the black clay represents the building's hearting or an earlier construction phase. Unlike in other excavation units, the black clay in EU G thickens and begins to slope upward. This points to the second possibility of an earlier construction phase. This black clay building also seems to have been stepped. From the location of the building in trench it seems that I was just a bit off of center w/ this trench.

30 June 2005

2005-06.49

(see p. 150)



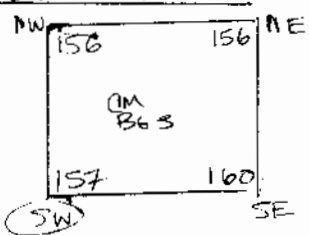
This is the southern sidewall of EU G or the northern Sidewall of EU H (before excavations begin)
Notice how the black clay does not seem to extend

the length of the unit. A digital image was taken of this stratigraphy.

In the next EU, the lots will follow the parameters of the black clay in order to expose more of the building.

ARTIFACTS : No artifacts were recovered from this lot

ELEVATIONS:



OPENING

NW 980.51 NE 980.36 SW 980.77 SE 980.61

CLOSING

980.50 980.50 979.99 979.96

* Measurements taken from the SW Corner. Original ground surface elevation 981.56

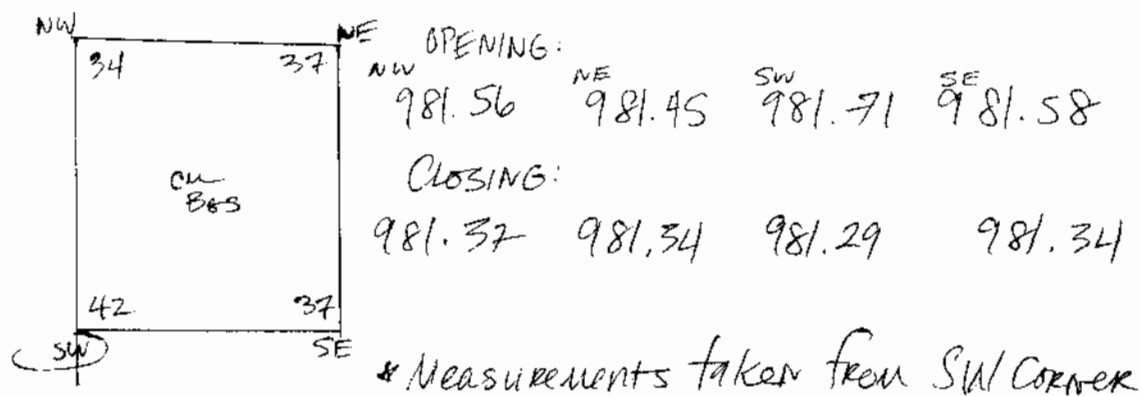
Lot 17 terminated at densely packed clay of plaza floor.

30 June 2005

2005-06-50

dark
brown
clayey
10dm

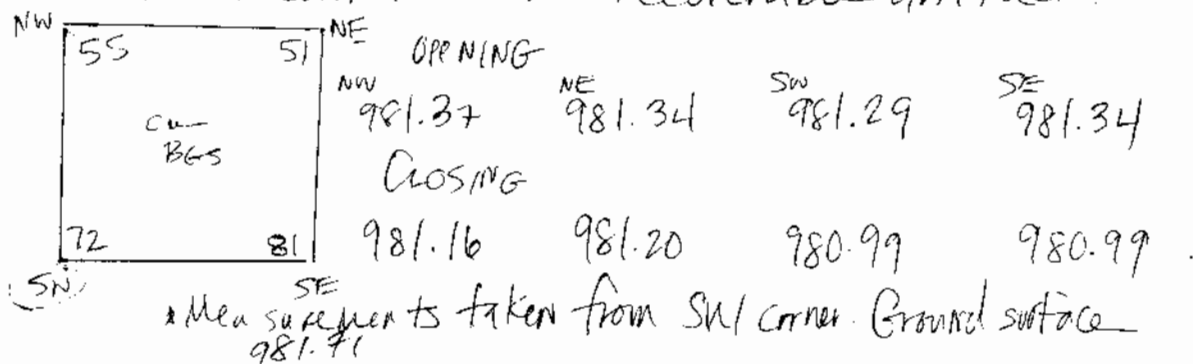
So Lot 18 in EUH (1m x 1m) is the initial lot comprised of humus. This lot had no surprises and looks like all the other initial lots excavated thus far. No artifacts were recovered. This lot was terminated when a soil change occurred in color and type. This indicated a change to construction facade or fill. ^{OR SLUMP} This lot will be Lot 19.



09/02/19, EUH (1m x 1m)

This lot beneath the humus, seems to be a mixture of humus, orangey (strong brown) clay, and small bajareque inclusions. It seems like it is construction slump or wall collapse.

This lot contained no recoverable artifacts

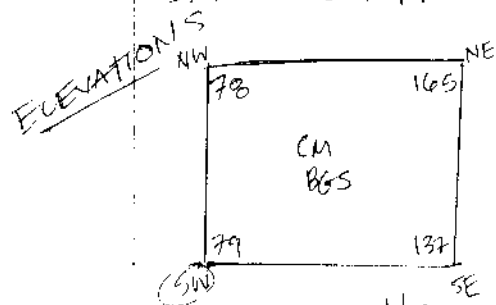


30 June 2005

2005-06-31

Lot 19 was terminated at a Soil change which was designated to be lot 20.

Lot 20 is $m \times 1m \times 1m$ (EUVH). It seems to be construction fill and building facade. The soil type is clay and appears to be a mottled yellow, brown, dark brown, and black. It is difficult to discern between different construction phases w/ this lot. It contains black clay which is suggestive of an earlier construction phase, but the ~~original~~^{additional} included clays makes it difficult to see stopping and starting points. This lot also seems to encase the lower black clay (Lot 23), which might be the earlier construction phase. This Lot 23 will be kept in situ until it is understood better.



OPENING

981.16 981.20 980.99 980.90

CLOSING

980.93 980.06 980.92 980.34

* Measurements taken from SW corner. Original ground surface 981.71

Lot will be finished tomorrow.

~~Lot was finished today.~~ The eastern side of the unit extended down to the densely packed clay that comprises the plaza floor. This lot contained a dearth of artifacts—only 3 cruddy ceramic sherds were recovered.

30 June 2005

2005-06-32

09/05/19
EU K

Thought we would continue w/ 09/05/19, EU G today, but will pick it up tomorrow. Rather, as time is of the essence and the building is not making any more sense (or seems to have disappeared), there is a different course of action for today. The highest point of the mound was selected for rapid style excavation. This was EU K. The unit was excavated as a single lot in test pit fashion. The intent was to expose as much as possible directly in the center of the building. If nothing of interest (or ~~nothing~~) was discovered, then I could conclude that the building was indeed modern, or maybe Structure 2 had been sheared off and dumped here by a tractor/bulldozer/etc.

Kike busted out this EU in a single work day. Like in EU F & G, EU K's Lot 20 was very mixed. Closer to the ground surface there was ^{the} clayey loam ~~loam~~ comprising humus. Intermixed w/ this was pockets of loose orange and white clay. Carbon was rare and only a little was collected. Closer to the bottom of the EU was a soil comprised predominantly of clay, black and very dark brown in color. And finally, at the bottom was yellowish-brown densely packed (and sterile) clay.

30 June 2005

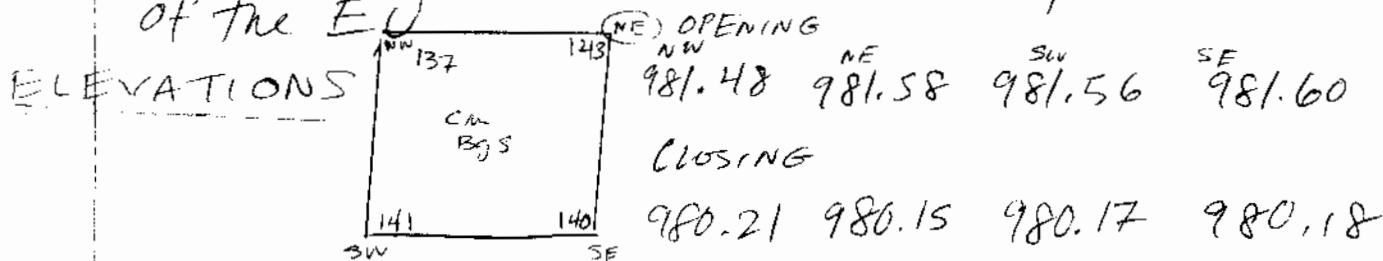
2005-06-33

The overall impression from taking EVs F, G, and K as a whole is that there was a building - but one that was not part of a ballcourt - and one that had been

Severely bioturbated... most likely by ants. In EU K, the clay floor is almost imperceptible and seems to be present only as bioturbated pockets of orange and white clay found at higher and random elevations.

As aforementioned, the Lot was terminated at the yellowish-brown clay.

ARTIFACTS: ~~Despite~~ ^{Despite} the size of this lot, artifacts were few and far between. 3 Lithics ^{obsidian fragment} were recovered, as was a little carbon. All of this was encountered in ~~the~~ ^{the} topmost 40cm of the EU.



* Measurements taken from NE corner - the highest one.

1 July, 2005

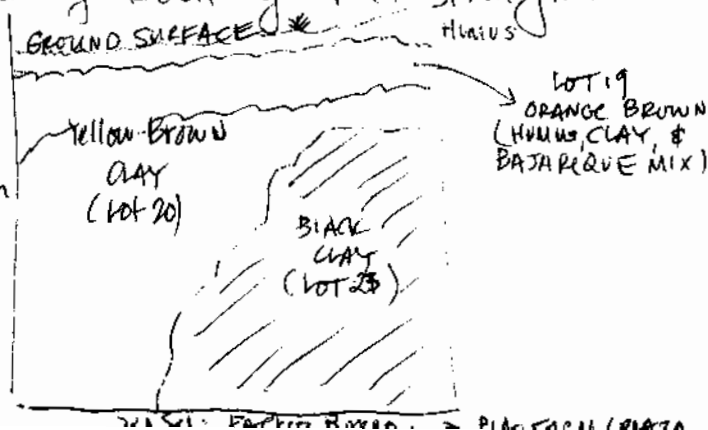
2005-06-54

Friday - Nat is sick so he stayed back at the house today. In 09/03, Had Tulio and Victor start in EU I. Forget to get Nat's paperwork so I do not know the numbers of his open lots. Have to remember to do this. ~~It seems~~ It seems - that Nat still has a lot open in EU H which he can finish up on Monday. EU I is getting closer to the top of the mound, so by the time we are finished excavating - this season we will have cut through half of this structure and I can do the other side (the western half) next season. Remember to get all paperwork filled out w/ proper information.

In Op 09/02, water still had to be bailed out of trench on account of the rain last night. Excavations continued in EU H in Lot 20. Beto and Roberto are following the "tierra negra" or black clay. In other words, they are removing the yellow-brown clay - ^{possibly} evidence of a later building episode - in order to expose the inner - and possibly earliest - manifestation of the building. Looking at it straight on it looks like this:

Closing
elevations
on p.
(June 30)

Northern side of EU H
*This side of EU was
taken down in excavation



1 JULY 2005

2005-06-55

After Lot 20 in EUH was finished, we continued w/ EU I. The black clay comprising the earlier construction phase (?) was left in place in EUH. And excavations in EU I ~~we~~ hope to further ~~excavations~~ expose the parameters of this earlier building.

In EU I, Lot 21 was begun. More to follow on p. 58, as we did not get too far with it today.

CP 09/05

09/05/19
EUG

In subop 5, we continued where we left on Wednesday (June 29) w/ Lot 19. This lot was a continuation of Lot 9, which was stopped arbitrarily. The matrix is a predominantly a clayey loam. Similar to Lots 8 & 9, there are pockmarked spaces. This lot is very strange in that it seems very homogeneous. It is mostly ~~predominantly~~ clayey loam w/ pockets of orange and white clay. The latter are randomly dispersed. The stratigraphy reveals little difference where is the building? It seems to have fallen victim to bioturbation, namely ants and their former homes. It is quite possible that at one point in time Lot 19 was construction fill.

BIOTURBATION!

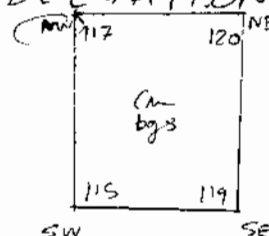
1 July 2005

2005-06-56

09/05/19
EUG

ARTIFACTS: Artifacts were typical w/ respect to type and quantity. This lot contained an obsidian fragment, 2 lithics, 5 small clumps of bajareque, and some carbon. Nothing was spectacular or noteworthy.

ELEVATIONS:



OPENING:

NW 981.03 NE 981.03 SW 980.99 SE 981.01

CLOSING:

NW 980.26 NE 980.23 SW 980.28 SE 980.24

*Measurements were taken from the NW corner and ground surface was 981.43

When this lot was terminated at the densely packed yellowish-brown clay. And excavations moved to EUG in hopes of connecting the ~~open~~ rest of the trench to EUG and offering insight ~~into~~ about the building.

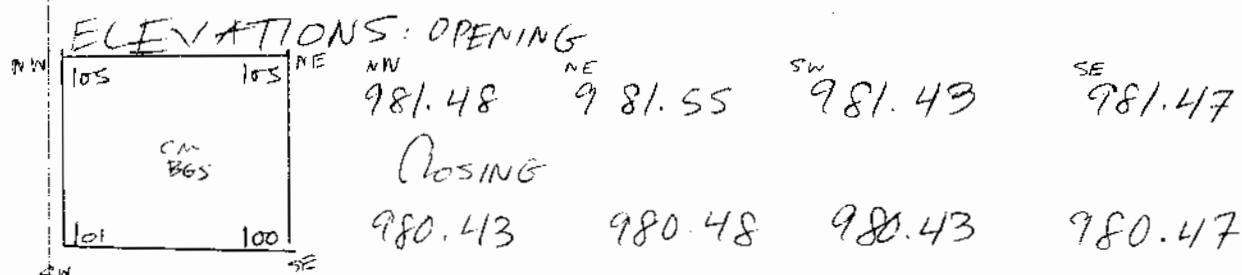
09/05/21, EUG is humus - the same ~~stuff~~ mixed stuff that has appeared in earlier EUGs.

This lot was predominantly clayey loam w/ widely dispersed packets of clay. The former ranged between very dark brown and dark brown, and the latter was orange and white.

1 July 2005

7005-06.57

ARTIFACTS: There were only a few artifacts recovered. Some chert, some basaltic, and an obsidian fragment - nothing spectacular. The obsidian seems to be from the El Chayal source.



This lot was terminated when the clay floor seemed to make a reappearance, which will be Lot 22. ~~When the clay floor seemed to make a reappearance, which will be Lot 22.~~

Though closing elevations are noted above,
excavations were finished in this lot on 4 July.
See p. 59

4 July 2005

2005.06.58

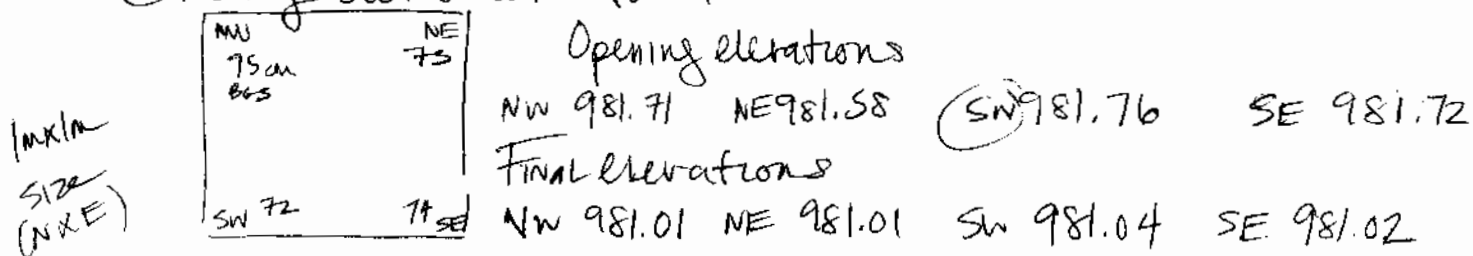
Monday - Happy fourth of July. Brian is here today!

Most trenches dry except for Op 09/02 which is still filled w/ about 15-20 cm of water. Beto and Roberto and I bailed it out before beginning excavations.

In this subop (09/02, Lot 21 EU I), the workers finished what had been started on Friday afternoon. This lot was composed of humus and overburden. Soil type was a clayey loam and dark brown in color. It is the same as every other surface lot in the trench. Very few artifacts were recovered - a single ceramic and a single lithic. Excavating in this unit brings us closer to the center of the structure. Lot was terminated when a subtle soil change was noticed - from clayey loam to clay.

The color had no changed in any significant way.

Closing elevations for lot



Measurements taken from SW corner.

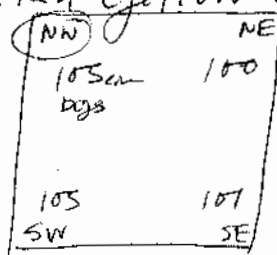
Next lot same 1m x 1m EU I. Lot 22 appears to be construction fill. Carbon was collected from the south central part of the unit. Lot will continue to be excavated tomorrow as the impending rains made for a hasty and early retreat from the site.

July 4, 2005

2005-06-59

In 09/05, Kike and Jose continued to excavate Lot 21. Jose was having stomach issues so I told him to take it easy. To locate... lot 21 is in EU H and is a 1m x 1m. Lot 21 is also the initial lot and was a fairly sizeable one as there was no perceptible soil or color change. So clayey loam that varied from very dark brown to dark brown. While the lot was fairly homogeneous throughout, there were small pockets of clay.

This lot contained no ceramics, but bajareque, chert, and a small obsidian fragment were recovered. The lot was terminated at what appeared to be a thin clay cap that appeared in the other excavation units. This clay cap was about 15-20cm above the densely packed yellow clay (el barro).



Opening elevations

NW 981.48 NE 981.55 SW 981.43 SE 981.47

Closing elevations

NW 980.43 NE 980.48 SW 980.43 SE 980.47

Lot 22 included the thin clay cap, which is now thought to be a floor; the clay underneath this cap which extended down to the densely packed ^{sterile yellowish-brown} barro amarillo, or plaza floor. A single ceramic and several chert cores were recovered. The lot was in the process of being cleaned — the sidewalls and floor — before being measured and terminated. The rains thwarted these final activities which will be finished tomorrow and then we move into EU I.

4 July 2005

2035-06-60

Taking over where Brianna left off in Subop 01.
Victor was continuing w/ excavations in EU A.

Lot 40 (All appeared to be dense clay, orange & white (mottled) in color. This was in the western half of a 1m x 1m. However, the narrow space was inhibiting his movement so I instructed him to remove the eastern half of the EU. He did this as one lot - lot 41. It matched perfectly w/ what had already been removed from adjacent lots (Lots 21, 33, 35, 37, and 39). Both the carbon lens and black clay floor extended throughout the entire EU. The carbon lens also ended abruptly in the eastern half as in the western half. Both lots 40 & 41 will be leveled and closed, and we will continue down in the EU as one lot 42.

Carbon and chert were collected from lot 41. We stopped early (around 2:30ish) because of the rain. (See next page for artifact description)

In Lot 36, Filliberto continued to excavate the clay of many different colors. He recovered more chert cores(?) and an obsidian blade. He also encountered the black clay floor, which terminated this lot. He was exposing it when we had to leave and will continue cleaning it up tomorrow. I am now thinking that lot 36 is construction fill.

The obsidian blade recovered by Filliberto



ACTUAL SIZE

Cross section

looks like a Chayal source dark and somewhat smoky.

4 July 2005

2005-06-61

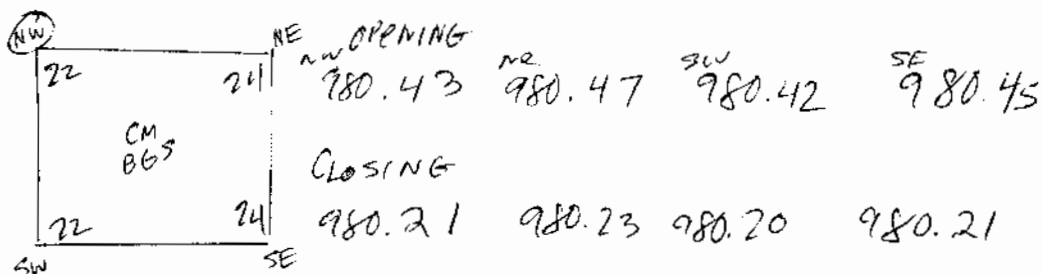
Monday 09/01/41 Continued...

Lot 41's artifacts were interesting. They included some pieces of cruddy chert (6) - possibly flakes, a ground stone that looks almost like a hammerstone, or pounder of some sort, and an obsidian point. The obsidian point looks like a Chaya Source - smoky

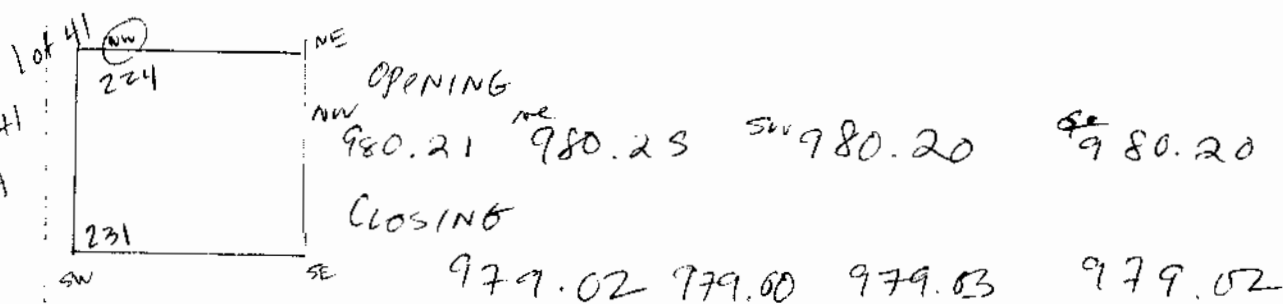


actual size

09/01/40
EUA Lot 40
ELEVATIONS



09/01/41
EUA Lot 41



*Measurements taken from NW corner. Original ground surface 981.74

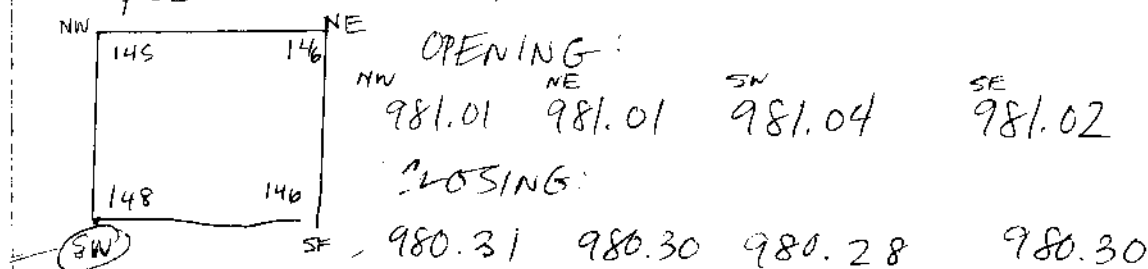
15 July 2005

2005-06-42

Tuesday

09/02/21
EUI

Lot 22 in EUI continued to be excavated. In addition to carbon (as aforementioned), lithics were also collected. Though artifacts remain few & far between. This lot seems to be a construction phase of a later building renovation. It was terminated at the ~~same level~~ of the black clay building exposed in EU H.



* Measurements taken from the SW corner. Original ground surface 981.76

After this lot was ~~terminated~~ terminated, the soil beneath it remained unexcavated. Mostly because of constraints on time. It seems that ~~the unexcavated part~~ the unexcavated part based on the northern sidewall (or southern sidewall in EU H) contains construction fill for the later phase of the building. The earlier, black clay building seems to disappear.

Next year's excavations will hopefully clear up why the black building disappears.

To better understand the black clay building

5 July 2005

2005-06-23

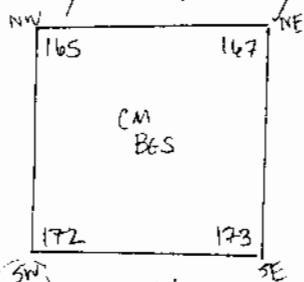
09/02/23
EUH

I returned to EUH in order to remove it as Lot 23.

Excavations offered further evidence for this as an earlier construction phase and not the hearting of the building. As aforementioned, it did not run through the entire unit but was constrained to the eastern half. The building slope ^{down} from west to east.

After Lot 23 was removed it seemed that underneath it a step had been carved into the densely packed clay of the plaza floor. This step appeared to run the width of the entire unit. It seemed to be 10cm high. Very strange indeed. Perhaps they are building the earliest construction phase into the plaza floor for added stability, though this seems highly unlikely. Not quite sure what is going on.

As this lot rested on top of the densely packed clay of the plaza floor it was terminated.



OPENING:
NW 980.93 NE 980.06 SW 980.92 SE 980.34
CLOSING:
980.06 980.04 979.99 979.98

Measurements taken from SW corner. Ground surface 981.71

This lot contained two pieces of ^{crude} lithics and nothing else

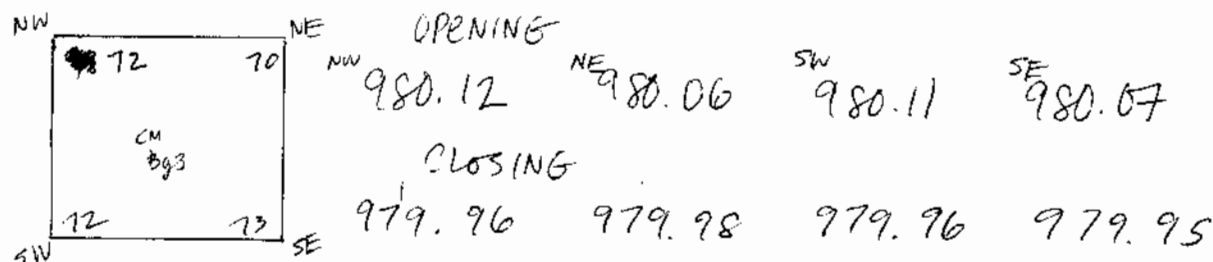
ELEVATIONS
ARTIFACTS

5 July 2006

2005-06-64

09/02/24
EUA

To figure out the mystery of the plaza floor which appeared to be cut into, I returned to EUA. The cut in EU H1 made me think that densely packed clay was in fact not the lowest, sterile point. Kike excavated 20 cm down in EUA to make sure the clay of the plaza floor which was yellow in EU A was in fact sterile and the beginning. Munsell 2.5Y ^{6/6 to 5/6 to 5/4} [olive yellow to light olive brown]. No artifacts were recovered and it seems that this is in fact ~~not natural and~~ sterile and perhaps natural to the site.



While this was being excavated, I went back to inspect the cut into the floor. I began cleaning around it and soon discovered that this was not a cut. Rather Beto and Roberto had not removed all of the black clay as instructed. The continual flooding of the trench and tracking in mud had obscured this. I asked ~~Beto~~ ^{Beto} to begin removing this ~~xxx~~ black clay layer so as to fully expose

5 July 2005

2005-06-65

The densely packed yellow clay that comprises the plaza floor. In the process of doing this the clay that was exposed was not yellow in color but rather gray w/ more orange and white mottling. This slight difference made me think that the ~~the~~ yellow in the beginning of the trench was a different stratum from the ~~the~~ grey closer to the center of the building. To figure out where the change occurred and which one was lower/higher, I had ^{about} every other meter excavated about ~~about~~ ^{5-10 cm}. EU B revealed a clay that was yellowish in color, as did the second half of EU D. If ~~it~~ was somewhere in EU E that the yellow faded into the grey ^{very subtle}. So it does not seem as if there ~~were~~ were two different clay strata. The color difference may be the result of exposure to air or local/natural pedological differences.

The other mystery of the day seemed to be what was going on in EU H. This was where the cut was thought to go into. However, cleaning exposed a gray clay speckled w/ white and orange. To double check that this is in fact a sterile stratum and not an earlier building renovation, I had Beto excavate it out.

09/02/25
EU B

09/02/26
EU D
(Southern 1/2)

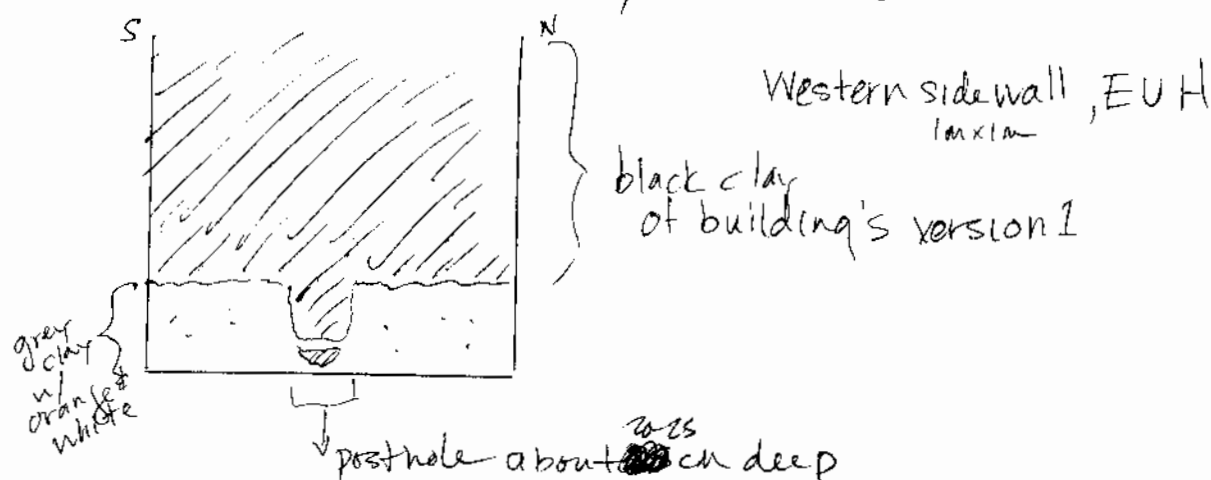
09/02/27
EU E

09/02/28
EU H

5 July 2005

2005-05-66

The grey clay continued down and interesting things began to appear in the sidewalls. In the western sidewall appeared a possible posthole. This posthole penetrates the grey clay and was filled with black clay from the structure above. It seems that it would have been associated w/ the earliest building phase - the black clay building.



In the eastern sidewall stranger things were going on. In EU G, the building had disappeared from the sidewall... as aforementioned the black clay building had sloped from west to east eventually disappearing in the eastern section of the unit. This seemed inexplicable but had something to do with the second building renovation. In a plan view there also appeared to be a stain or area of the excavation unit that was darker,

09/02/29
EUH

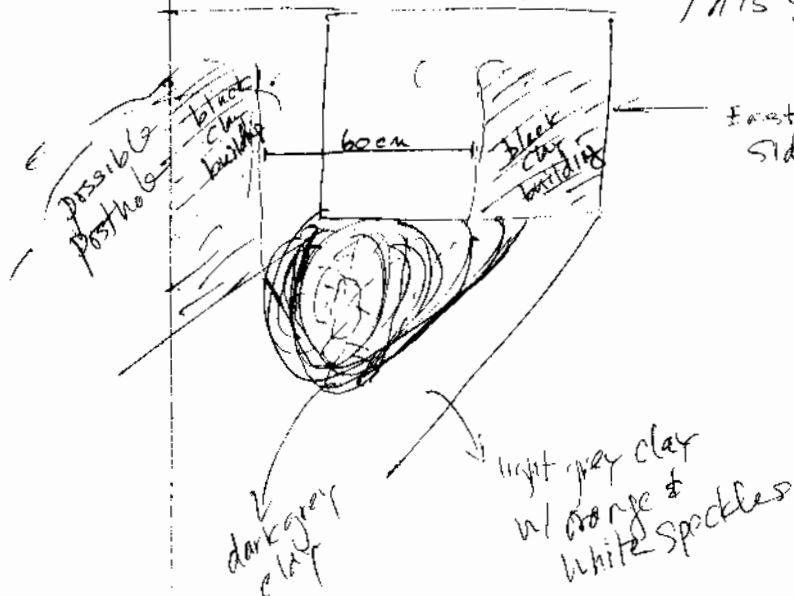
5 July 2005

2005-06-67

~~black~~ in color - dark grey instead of light grey - and was comprised of more small cobbles. This was in the eastern half of the unit and seemed to be associated w/ the disappearing black building.

FUG E.U.H

This stain on the floor also retained water despite the fact that ~~it~~ it had been dry the past few days and the trenches did not need to be bailed out.



The light grey clay was excavated down until day's end in order to double check that it was sterile. We will return to it tomorrow to figure out what is going on.

3 July 2005

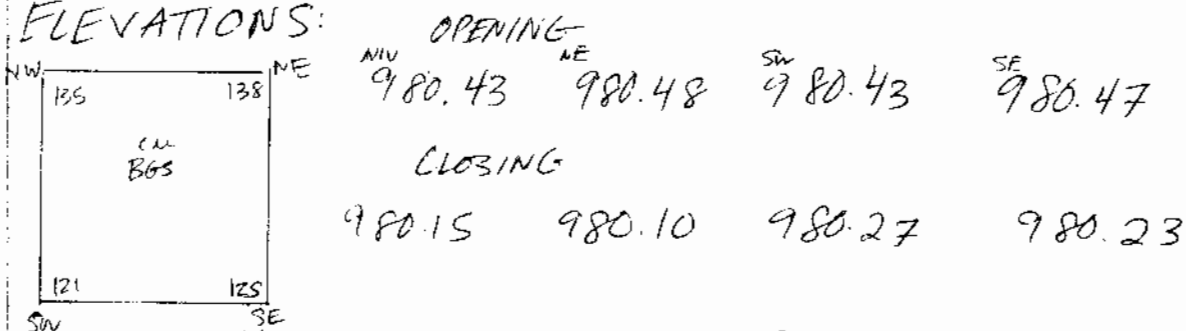
2005-06-68

09/05/22, EU H

Lot 22 was finished and measurements were taken.

ARTIFACTS: There were very few artifacts collected from this lot — a single ceramic sherd and chert cores.

ELEVATIONS:

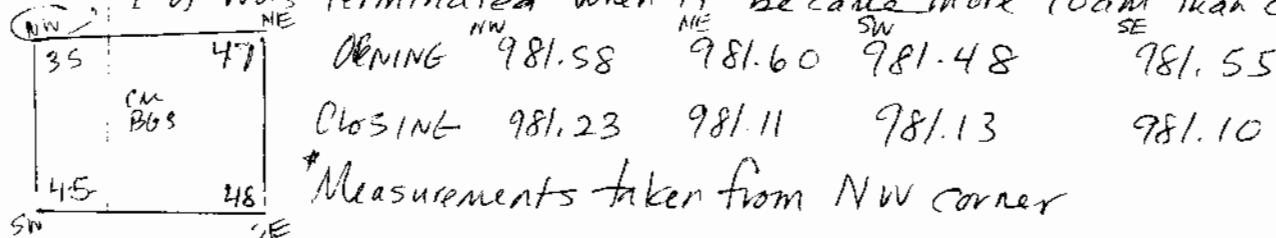


* Measurements were taken from the NW corner. Original ground surface 981.48.

09/05/23
EU I

After EU H was finished, we moved into EU I. Lot 23 was more of the same found in Lot 21, EU H. Humus that was clayey loam w/ orange & white clay pockets — so it seemed really mixed. Virtually no artifacts were recovered w/ the exception of a very small piece of obsidian.

Lot was terminated when it became more loam than clay



* Measurements taken from NW corner

5 July 2005

2005-06-69

This lot was the last one excavated in the E.U. The southern sidewall was not suggestive of any major change. Time did not allow for further excavation; and I feel like further excavation was not necessary as a general understanding of this trench and structure has been gleaned.

6 July 2005

2005-06-70

Last day of excavations! Tomorrow will be pictures, drawing, & elevation-taking. No water in trenches! One exception in the stain in EUH of 09/12. Seemed to be wet. Had Beto excavated further just in this stain after he leveled off the light-grey clay. The stain went down, and narrowed. Had to stop when it filled w/ water. It seems that this could be part of a very large posthole put in place in a later architectural renovation. In erecting it, the posthole would have obliterated the black clay of the earliest building phase. The posthole also seems tenoned so the dark grey clay would have been the lowest point of insertion.

✓ Excavation was stopped when ground water began to fill, or seep up into, the hole. No artifacts were recovered. It is possible that carbon was in this hole, but the water made it difficult to identify & collect.

- L-trench was -man made ready for photos. Sidewalls were cleaned and mud was removed and all was made level. Images were taken w/ a digital and a real camera of all floors

6 July 2005

2005-06 - 71

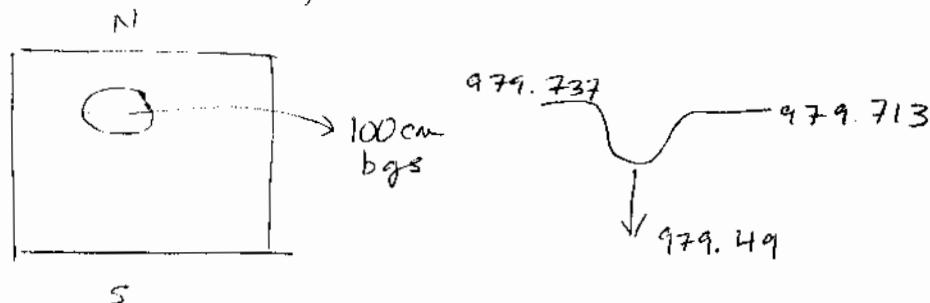
and sidewalls in excavation units. Features of note. like Postholes 1 & 2 were also paid Special attention to. Drawing the western sidewall will occur tomorrow and EDM plan points will be taken.

7 July 2005
09/05

2005-06-72

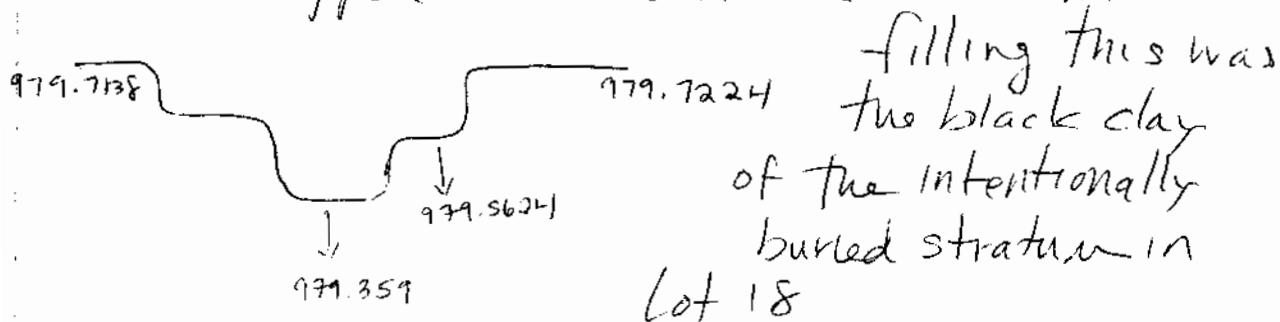
Today we found some interesting things when we were cleaning up the floor for photographs, namely 3 postholes in various places in the excavation unit. One was in EVA (Lot 24), A second in EU F (Lot 25), and a third that spanned both EU D & E (Lot 26)

09/05/24, EVA's posthole was shallow and perhaps associated w/ the first construction phase. It looked like this:



No artifacts were recovered.

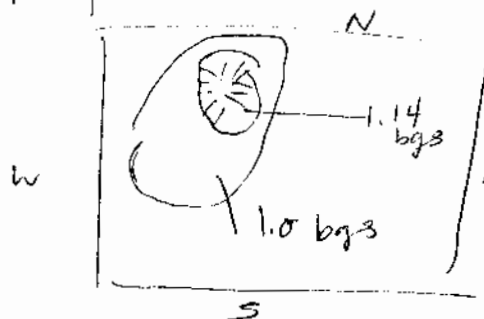
09/05/25, EU F's was more interesting and labor intensive. The yellowish-brown had been stepped in a bowl-like fashion.



7 July 2008

2008-06-73

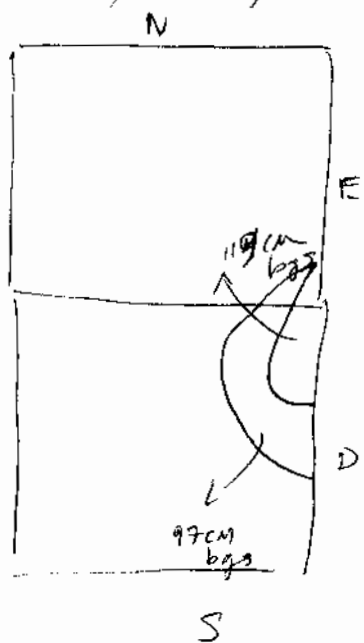
The plan it looked like this.



Inside of this posthole were encountered a very small (obsidian) fragment, 11 crudely chert tools that seemed to have

been hastily made, and much carbon. The collected carbon will hopefully yield a nice date. This posthole perhaps was associated w/ the first construction phase though it is difficult to tell

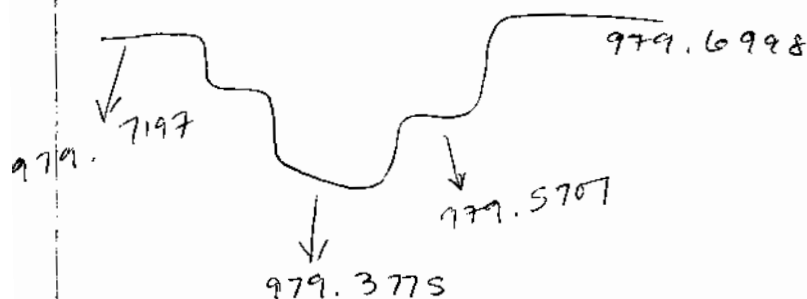
Finally, 09/03/26 is the third posthole that extends between excavation units D & E, though it is mostly in D. This posthole



seemed to be part of the second construction phase. It most likely penetrated the orange and white clay floor and cut into the densely packed clay of the sterile yellowish-brown clay. Similar to Posthole 2 in EV F it looks like a stepped bowl

7 July 2005

2005-06 741



If it is associated w/ a second construction phase this perhaps explains why there is a concentration of clay here that seems to run into the yellowish-brown clay. Unlike ELF's posthole, few artifacts were associated w/ this posthole... only 3 cruddy ceramics

After these were properly excavated, the unit was made pretty for photographing. All were thoroughly drawn, plotted and photographed.

By day's end (and around 5:00 at night) we bkd again to Las Orquideas for the field season

Operation	Sub-Op	Lot	EU	Ceramics	Chert	Lithics	Ground Stone	Obsidian	Bajareque	Bone	Carbon	Location/ Desc.
09	02	01	A	20	7	0	0	1	0	0	N	outside & N of Str. 2, sterile clay
09	02	02	A	7	0	0	0	0	0	0	N	outside & N of Str. 2, sterile clay
09	02	24	A	0	0	0	0	0	0	0	N	outside & N of Str. 2, sterile clay
09	02	04	B	13	0	3	0	0	0	0	N	outside & N of Str. 2, sterile clay
09	02	05	B	0	0	0	0	0	0	0	N	outside & N of Str. 2, sterile clay
09	02	25	B	0	0	0	0	0	0	0	N	outside & N of Str. 2, sterile clay
09	02	06	C	18	0	7	0	0	0	0	N	outside & N of Str. 2, sterile clay
09	02	07	D	21	0	4	0	1	0	0	N	Humus above building slump on N side of building

Operation	Sub-Op	Lot	EU	Ceramics	Chert	Lithics	Ground Stone	Obsidian	Bajareque	Bone	Carbon	Location/ Desc.
09	02	26	D	0	0	0	0	0	0	0	N	Building slump on N side of building
09	02	08	E	2	0	0	0	0	0	0	N	Humus above building slump on N side of building
09	02	09	E	12	0	8	0	2	0	0	Y	Construction fill v2
09	02	10	E	0	0	0	0	0	0	0	N	Construction fill v1
09	02	27	E	0	0	0	0	0	0	0	N	Sterile clay
09	02	11	F	0	0	0	0	0	0	0	Y	Humus above building on N side of building
09	02	12	F	0	0	0	0	0	0	0	Y	Construction fill v2
09	02	13	F	0	0	0	0	0	0	0	Y	Construction fill v2

Operation	Sub-Op	Lot	EU	Ceramics	Chert	Lithics	Ground Stone	Obsidian	Bajareque	Bone	Carbon	Location/ Desc.
09	02	14	F	0	0	0	0	0	0	0	N	Construction fill v1
09	02	15	G	0	0	0	0	0	0	0	N	Humus above building on N side of building
09	02	16	G	0	0	3	0	0	0	0	Y	Construction fill v2
09	02	17	G	0	0	0	0	0	0	0	N	Construction fill v1
09	02	18	H	0	0	0	0	0	0	0	N	Humus above building on N side of building
09	02	19	H	0	0	0	0	0	0	0	N	Construction fill v2
09	02	20	H	2	0	0	0	0	0	0	N	Construction fill v2
09	02	23	H	0	0	2	0	0	0	0	N	Construction fill v1

Operation	Sub-Op	Lot	EU	Ceramics	Chert	Lithics	Ground Stone	Obsidian	Bajareque	Bone	Carbon	Location/ Desc.
09	02	28	H	0	0	0	0	0	0	0	N	Posthole 1 in sterile clay (east wall)
09	02	29	H	0	0	0	0	0	0	0	N	Posthole 2 (west wall)
09	02	21	I	2	0	1	0	0	0	0	N	Humus above building on N side of building
09	02	22	I	0	0	0	0	0	0	0	Y	Construction fill v2
09	05	01	A	7	0	4	0	0	0	0	N	outside & S of Str. 3, sterile clay
09	05	02	A	28	0	5	0	0	0	0	N	outside & S of Str. 3, sterile clay
09	05	24	A	0	0	0	0	0	0	0	N	Posthole 1

Operation	Sub-Op	Lot	EU	Ceramics	Chert	Lithics	Ground Stone	Obsidian	Bajareque	Bone	Carbon	Location/ Desc.
09	05	03	B	7	0	3	0	1	0	0	N	outside & S of Str. 3, sterile clay
09	05	04	B	17	0	2	0	0	5	0	N	outside & S of Str. 3, sterile clay
09	05	05	C	23	0	14	0	0	0	0	N	outside & S of Str. 3, sterile clay
09	05	10	C	0	2	2	0	1	7	0	N	Building slump on S of Str. 3
09	05	06	D	17	0	0	0	1	0	0	N	Humus above building on S side of building
09	05	11	D	4	0	20	0	0	8	0	Y	Building slump on S of Str. 3
09	05	12	D	3	0	0	0	0	0	0	N	Construction fill v1
09	05	26	D	3	0	0	0	0	0	0	N	Posthole 3

Operation	Sub-Op	Lot	EU	Ceramics	Chert	Lithics	Ground Stone	Obsidian	Bajareque	Bone	Carbon	Location/ Desc.
09	05	07	E	15	0	1	0	0	0	0	N	Humus above building on S side of building
09	05	13	E	7	0	22	1	1	24	0	Y	Building slump on S of Str. 3
09	05	14	E	2	0	2	0	0	8	0	Y	Burn lens above clay floor
09	05	15	E	3	0	0	0	0	0	0	N	Clay floor
09	05	17	E	5	0	11	0	0	0	0	Y	Construction fill v1
09	05	08	F	15	0	0	0	0	0	0	N	Humus above building on S side of building
09	05	16	F	9	0	11	0	0	6	0	Y	Slump? Construction fill?
09	05	18	F	0	0	0	0	0	0	0	Y	Slump? Construction fill?

Operation	Sub-Op	Lot	EU	Ceramics	Chert	Lithics	Ground Stone	Obsidian	Bajareque	Bone	Carbon	Location/ Desc.
09	05	25	F	0	11	0	0	1	0	0	Y	Posthole 2
09	05	09	G	0	0	0	2	0	8	0	Y	Humus above building on S side of building
09	05	19	G	0	0	3	0	1	4	0	Y	Slump? Construction fill?
09	05	21	H	0	0	15	0	1	10	0	N	Humus? Slump? Construction fill?
09	05	22	H	2	4	0	0	0	0	0	N	Clay floor and sub-floor clay
09	05	23	I	0	0	8	0	1	6	0	N	Humus
09	05	20	K	0	0	5	0	0	0	0	N	Humus, overburden, construction fill