

2006

EPV 017 Hostenske Field Notes 2006

Mary Hostenske

Follow this and additional works at: <https://digital.kenyon.edu/honduras>



Part of the Archaeological Anthropology Commons

Recommended Citation

Hostenske, Mary, "EPV 017 Hostenske Field Notes 2006" (2006). *Four Valleys Archive*. Paper 96932.
<https://digital.kenyon.edu/honduras/96932>

This Field Notes is brought to you for free and open access by the Anthropology at Digital Kenyon: Research, Scholarship, and Creative Exchange. It has been accepted for inclusion in Four Valleys Archive by an authorized administrator of Digital Kenyon: Research, Scholarship, and Creative Exchange. For more information, please contact noltj@kenyon.edu.

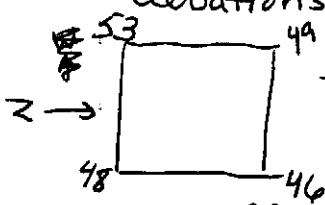
25 May 2006
5/25/06

2006-17-01

Op 2 (El Cajetal) Subop. 61

Am continuing Roberto's excavation of Str 4(?) Am following a superstructure wall west. Starting EU V (west of EU U). It is a

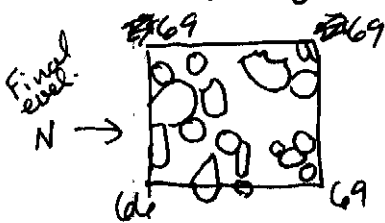
Starting 1 m² unit. Lot 50 is an approx. 20cm



lot with the purpose of uncovering. I am working w/ Chepe, Misa, ^{Don} Beto & Pedro.

In the area that would be the top of the wall (living surface?) found a 1.5" long biface obsidian.

Am finding a few shreds. Found small piece of bajareque. Removed some tumbled rocks



Starting Lot 51, EU V. It is the second lot in EU V.

We are removing tumble and continuing down another approx 5-10cm. One more wall related stone has been uncovered, but as of yet it doesn't look like there is a continuation. Found chip of a metate. Uncovered

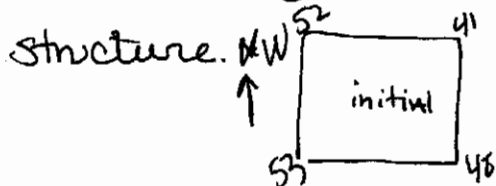
corner of wall. Soil has changed to a more dense clay. Am continuing down in front of wall.

Removed tumble. Am finding ceramics, and possible metate pieces. Found a few pieces of obsidian & chert. Found 1 2" x 3" chert rock (am not including w/artifacts)

2006-17-02

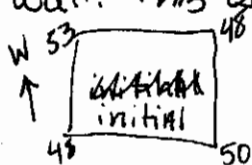
25 May 2006

Am starting two new EU's. EU W is west of EU V and is following the lower wall that seems to run the entire length of the excavated structure.



This will be Lot 52. It ~~is~~ will be a lot until the change of soil \pm

Second new EU is EU X which is north of EU V. It is looking for the continuation of the short upper wall that cornered in EU V. It will be an approx 20cm lot going down to the top of the wall. This is lot 53.



Have uncovered a lot of tumble in EU W (lot 52)

Have found some in EU X - maybe a continuation of the top summit wall (?).

Lot 52

Am removing definite tumble and continuing down another 10cm. Found small piece of tobr. Added another tarp, since it has started raining.

26 May 2006

(EU X)
In Lot 53 Misa uncovered a possible cobble floor. It is at the same elevation as the top of the mini wall in EU V. Are cleaning off & will take a photo. Probed to see if there was anything beneath it \rightarrow there wasn't. Stoner seem to cut ~~about~~ / ~~unseen~~ to be floor

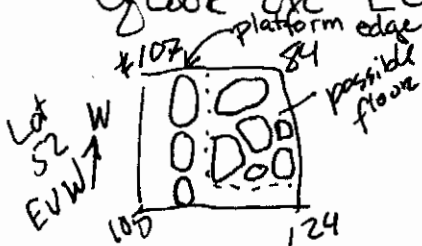
2006-17-03

26 May 2006

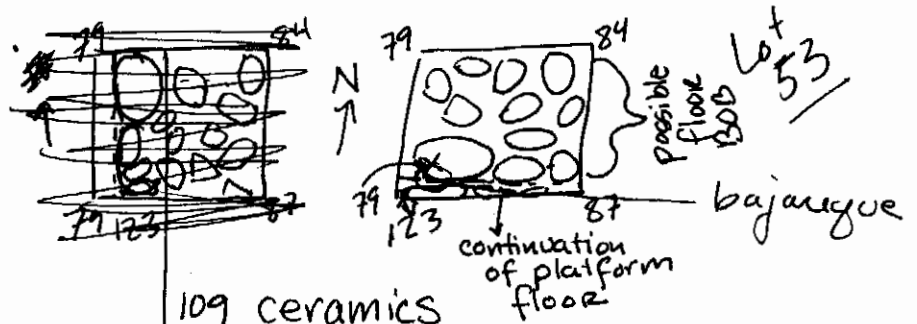
In Lot 52 EU W. am continuing to go down to the cobble platform. Are ~~we~~ going down in the rock free area in the ~~middle~~ center East side to ~~see~~ uncover more information about the possible line of stones. The platform edge line continues west as might the cobble floor on top of the associated with it.

Lot 53 EU X: Misa found several small chunks of bajareque directly underneath (along the edge of) the big flat stone that makes up the edge of the possible floor. Am continuing to go down to see relation between possible floor and stubby wall in EU V.

For future reference: the wall in EU's U & V will be called STUBBY and the possible floor in EU X will be called BOB.



- 134 ceramics
- 8 bajareque
- 4 obsidian^A
- 1 chert
- 1 toba



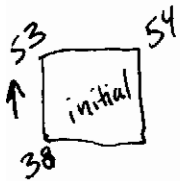
- 109 ceramics
- 5 bajareque - all from same area
- 1 chert
- 1 possible metate
- 2 obsidiana

2006-17-04

26 May 2006

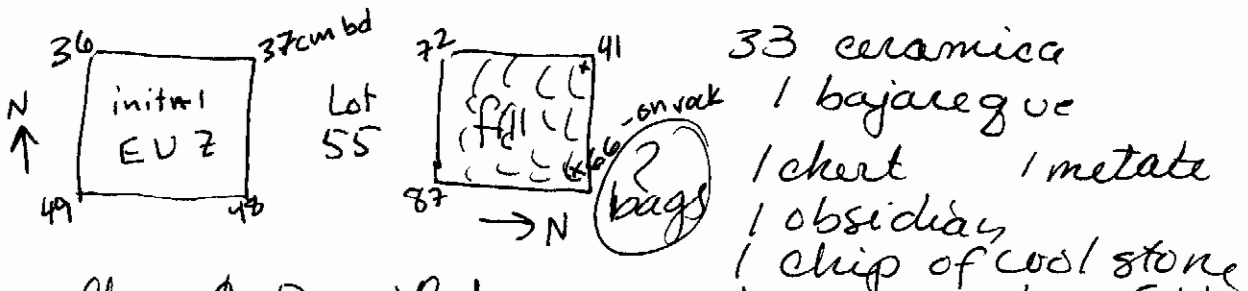
Am opening two new EUs to see if the possible floors from EUs W & X @ are really floors @ continue @ connect.

EU Y (Lot 54) is W of EU X. It is a 1x1 m lot and is being excavated to see if possible floor BOB in EU X connects to the possible floor in EU W.



EU Z (Lot 55) is also a 1x1m EU located W of EU W. Roberto had expressed concern that it had been excavated but neither I nor my workers think so. When they did the 4x4 test pits I don't think they did any on the mounds. Chepe would know -> I think ~~here~~ he has worked @ Cajetal since the beginning.

Santiago came to visit & helped Roberto & I make a new game plan. The stuff in EU Z is fill (flat laid). We are stopping this unit where it is.

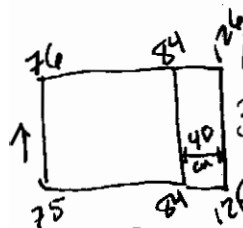


Chepe & Don Beto are returning to EU W to remove the possible floor to see if the platform surface continues. Lot 56.

2006-17-05

26 May 2006

We are then going to jump 2 m west of the current excavation to see if there is another column, since the 2 columns uncovered are approx 4m apart.



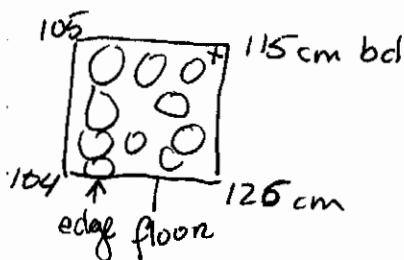
2 Bags

Lot 54 EU Y has been expanded about 30cm east into EU X. We are excavating down to see if the platform floor continues.

artifacts below upper floor =	54 ceramic	artifacts above floor =
	9 bajae	53 ceramics
	1 shell	1 obsidian
	3 obsidiana	1 bajareque

EU Z has an arrow pointing to the left.

Lot 56 EU V has uncovered a (very sloped) floor continuing N. from the platform edge.



ceramica 58
 bajareque 19
 obsidiana 3

~~Area~~ Have created new unit it is - the 2nd meter West of EU Z. It will be called EU AA. There is a small trunk that will have to be removed, but nothing too bad. Santiago/Roberto suggest/hope that there will be another column under there. I am not so sure however, since the amount/spacing of rocks on top is similar to that of EU Z ~~at the~~ which is fill. This is Lot 57.

2006-~~18~~¹⁷-06

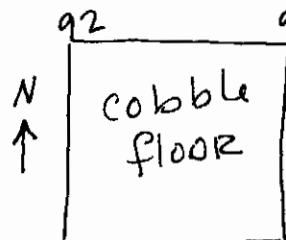
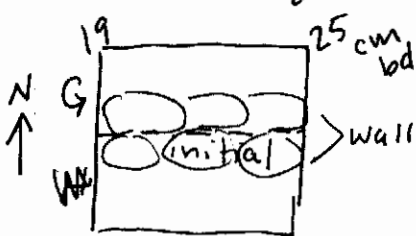
29 May 2006

Am continuing with EU AA lot 57. We are clearing the back sides of the wall including removing the tree ~~stump~~ stump. We are ~~then~~ going to follow the wall down to the base.

Am starting Lot 58 in EU G ~~AA~~ - part of Whitney's axial trench. have removed the possible wall and are now going down to see if the floor continues, like it has on the rest of the mound.

In EU AA Lot 57 we uncovered the back of the wall. Expanded 40cm N to uncover the base of the N side of the wall & ended up uncovering a possible floor; are continuing to clean the area. The expansion will be EU AB.

~~Am~~ Finished Lot 58 EU's G ~~AA~~ Uncovered cobble floor that continues to the north; just like the one further west. Found a significant amount of

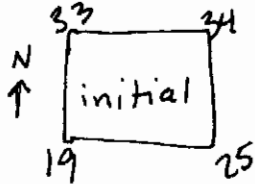


bajareque. Some w/ visible wood curves.
bajareque 14
ceramica 71 + 60
obsidiana 3

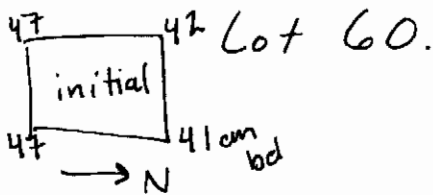
2006-17-07

29 May 2006

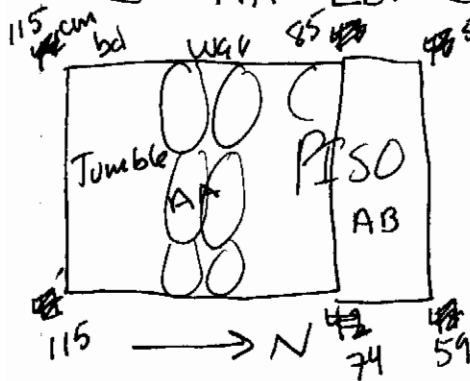
Am starting Lot 59 in EU ~~AA~~^G. This will be a 20-30 cm lot that will see how far north the cobble floor goes.



Am starting EU AC. East of EU AA. It will connect EU AA to EU ~~AA~~^F; and will ~~determine~~^{see} the relation of the ~~EU AA~~^F wall to the fill. Am going down in front of the wall as done in EU AA. Am removing tumble



EU AA/AB Lot 57. Uncovered wall & possible floor which is at a level similar to the levels uncovered to the east.



- 32 ceramica
- 9 bajareque
- 2 chert
- 1 obsidiana

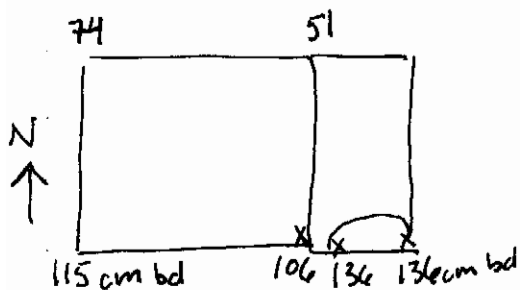
Interestingly, the ^{clay} fill until the wall in EU_s F/G/H has lots of artifacts (ceramics) mixed in; While the fill - clay & stone - that ~~surrounds~~^{surrounds} the column has relatively few.

2006-17-08

29 May 2006

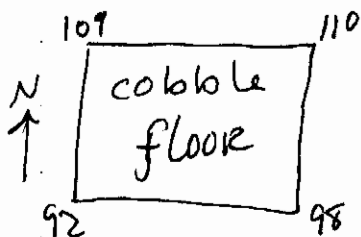
Have ~~not~~ extended Lot 60 into EU ~~W~~ E
Have removed tumble to define E corner. ^{of wall} In
~~the~~ turn have found what seems to be
another 2 courses of the platform wall in
the South.

Finished Lot 60.



40 ceramica
 3 bajareque - one 3" x 2" chunk
 2 obsidiana

Finished Lot 59 EU ^G Need to
measure tomorrow. The nice cobble floor
continues north.

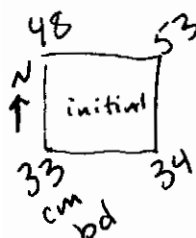


~~40 ceramica~~ 45 ceramica
~~3 baja~~ 7 bajareque
 1 obsidiana
 1 metate

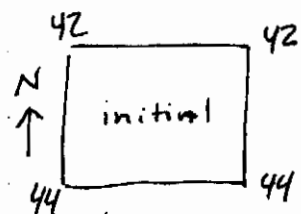
2006-17-09

30 May 2006

Am continuing N in the axial trench into EU ~~FF~~ ~~(R)~~ to uncover more of the floor. We are now working through dirt that was filled in after Whitney excavated. Lot 61.

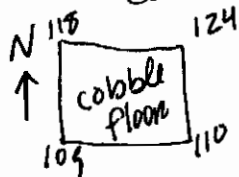


Am ~~adding~~ adding new EU to the West of EU AA; in order to find the end of the possible wall/column found in EU AA. This will be EU AD and Lot 62.



Have uncovered the end of the column in EU AD. It is slightly deteriorated and we have had to removed both tumble & what looks like flat laid fill to uncover it. It appears to be approximately the same length as the other columns. Am finding few ceramics. The W. corner of the column is so deteriorated it is ^{currently} impossible to tell if it continued like a wall or not. Am removing some more rocks/tumble to the W of the corner to see ^{better} how the surrounding rocks relate.

Finished Lot 61 EU F ~~FF~~. Ceramics 46 Found continuation of cobble floor.



2006-17-10

30 May 2006

I'm getting a little angry @ Roberto. I understand that this was his excavation, but he has no right to come over & tell my workers what to do w/out consulting me. I am perfectly capable of making excavation decisions on my own. And now he asks if I ~~is~~ really have to work in the lab since we will probably have to 2 an areal and a profile. And yet he doesn't even think Whitney did a basic profile of her axial trench & suggests that I do one too. I'll gladly finish Patrick's drawing of the platform but I should not have given the nice answer saying that I wasn't sure & if I was needed to do lab work.

I am having Don Beto remove a large rock that doesn't seem to be part of the wall (from the W end) to see if it continues or not. I have the feeling that 1 sorry looking course might continue. I might take a few ^{sliding} rocks/dirt off the top to see if there is an abutment going on.

Ok. As it stands: Tomorrow I will finish drawing the platform wall - that Patrick started & I will redraw the exposed axial trench to include the floor.

2006-17-11

30 May 2006

Hopefully excavation can meet some conclusions in AD. I am stopping w/EU ^E Lot 63 where I am in the original axial trench. ⁷⁷ ⁷⁷ since apparently the terrace step is at least another 1.5m N. Since we know ⁴⁸ ⁵³ initia now that the cobble surface covers the entire platform there is no real need to continue. I don't want to spend more than 1.5 days finishing up.

Clay under columns → over platform floor is 2.5 Y/3/2 w/ ← very dark grayish brown
very fine - medium inclusions
2-3% of orange/tan/black not gritty

→ Am coming across rather large stones that may have tilled off an extension of the wall. EU AD has been expanded 40cm N (EU AE) to investigate this. One of the rocks in question has a flat face (facing out) which makes it seem like it might have been part of the wall. However, these rocks are out of place size wise w/ what has been found previously.

Found that there is a wall running N/S that either abuts or interdigitates w/ the column like wall. Seems to be part of the same time period (so far). Below it is what they described as actual clay

1% black inclusions 10 YR/4/3 brown

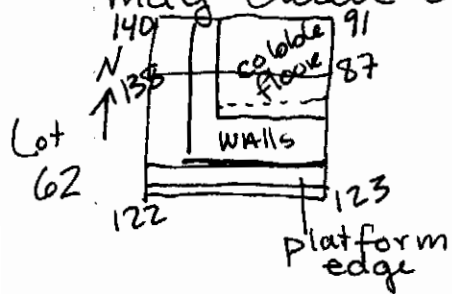
2006-17-12

30 May 2006

In Lot 63 we have run across what may or may not be the back of one of the terraces. There has to be more than one terrace!

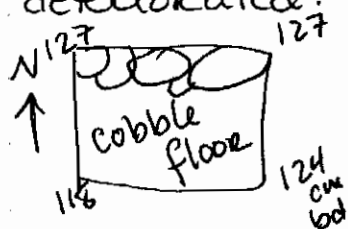
Lot 64 was a clearing lot in EU T. I amazingly did it myself - cutting through the layer of clay w/ a pickin. - to uncover the cobble platform which was obscured in that one area. I found 2 tiny pieces of pottery.

The ^{N/S} wall in EU AD/AE ~~is~~ interdigitates with the ^{E/W} wall. ~~is~~ I suspect that the corner we found earlier (next to the fill) will also lead to a N/S wall. If there is time tomorrow I may have them follow it to N.



- 7 bajareque
 - 38 ceramica
 - 1 chert
 - 1 tiny obsidiana
 - 2 metate
- 2 bags

Finished Lot 63. It is probably not one of the terraces, or if it is it is really deteriorated.



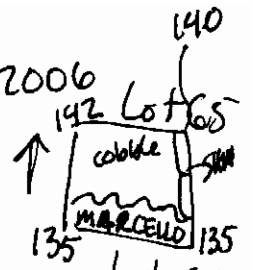
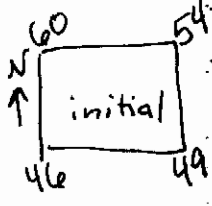
- 25 ceramica
- 2 bajareque
- 1 perdernal
- 1 metate

2006-17-13

31 May 2006

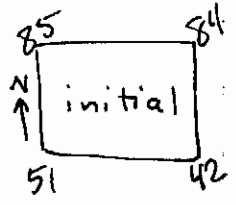
Starting two new EUs

EU AF will be Lot 65 and will be a ~~new~~ EU N of EU AC. It is uncovering a possible eastern (N/S) wall forming a room.



- 21 ceram
- 5 baj
- 2 perid
- 3 obsi
- 2 toba

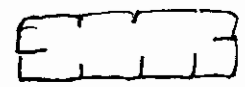
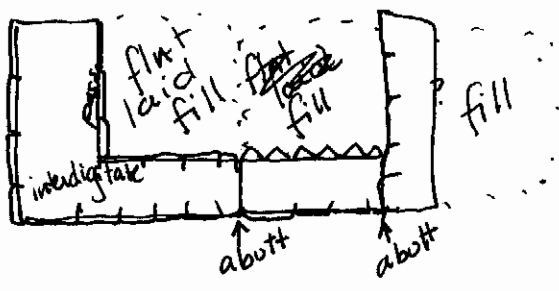
Am also starting a unit EU AG to the N of EU AE. This will be Lot 66 and will follow the wall uncovered in AD/AE to the north.



Have partially solved the mystery of the room. It seems to have been built in 2 diff phases. Although the 2 phases weren't very far apart.

- 25 ceramica
 - 3 bajareque
 - 3 peridernal
 - Final lot 66
-

Not to scale



2006-17-14

1 June 2006

	Unit name	length	w	h	alig	courses	top	bottom
	MARIE	1.45m	.5m	.43	110°	5	.49	.92
CU1	STUMPY	1.47m	.42	.5	112°	4	.75	1.22
CU10	GUS TOP	1 excavated	1	-	-	cobble floods) fill	.72	.98
CU7	Bob	1	.5	-	-	cobble floods) fill	.85	.96
CU8	Ellen	1	1	-	-	7-flat laid fill	.57	1.15
CU2	SHAN	1.9	.28	.89	14°	8	.55	1.39
CU3	SHORT STACK	1.54	.45	.7	290°	7	.44	1.20
CU4	MARCELLO	1.8	.5	.80	290°	6	.53	1.09
CU5	CHIQUITO	1.87	.4	.83	19°	7	.72	1.45
	BECKY	12.8m	.23	.43/ 1.81	290°	-	1.05 to U	-
CU6	FLAT TOP	12.8m	4m	-	-	-	heights .9	lowest point (sloped) 1.31
CU9	JUNIPER	1	.4cm	.25	-	2?	.79	.76

Cm of clay fill under Bob (to FLAT TOP) = .33
 Cm of clay fill under GUS (to FLAT TOP) = .55
 Cm of clay fill under JUNIPER (to FLAT TOP) = .55

top	Bottom
.96	1.23
.98	1.29
.79	1.43

2006-17-15

1 June 2006

(ht x w x thick)

Unit Name	Largest Rock	Smallest Rock	modal size	Rock form	material kind
MARIE	34x28x8	9x6x?	24x7x9	rect. natural	
STUMPY	39x17x28	13x6x14	30x10x14	rect natural/ nat. flat edge	
GUS	24x7x17	13x3x8	21x6x11	nat unshaped flat stones	
BOB	TOP 36x7x31 BOTTOM 29x8x27	T 10x3x10 B 13x7	T 19x7x13 B 25x8x13	T NATURAL B	T B
ELLEN	33x24x23	6x7x7	13x9x23	mainly nat. semi sq cobble	
SHAN	59x15	20x6	27x10	nat. sq & flat	
① SHORT STACK	36x26	12x4x15	24x9x13	nat sq & flat	
	② MARCELLO 35x15	14x4x5	25x5x25	nat sq & flat	
CHAIQUITO	42x12	19x4	29x9x15	nat sq & flat	
BECKY	36x9x 20 23	14x6x9.5	21x10	nat flat/sq cobble	
FLAT TOP	25x 20 23	8x6	19x8	flat cobble	
JUNIPER	28x10x24	13x7	23x8x29	nat. not square	cobble & the braiking stuff

might be an
a bottom
addition
N end
of well
2.45
long

2006-17-16

1 June 2006

(STUMPY)

Construction unit 1 is 1.47m long, 0.42m wide, & 0.5m high. It is constructed out of four courses of local, naturally ^{semirectangular} flat stone and is aligned ^{E/W} 112°. It appears to be a stand-a-alone column.

Construction unit 2 (SHAN) is a 1.9m long, 0.28m wide, 0.89m high wall constructed out of 8 courses of local, naturally flat stone. It is oriented N/S 14°.

What is this called? (N.F.L.S.)

Construction → CU 2 is abutted in the NW by CU 4 (MARCELLO), which was a latter addition.

It sits on top of CU 6 (FLAT TOP) which is the top of the Str 4 platform.

CU 3 (SHORT STACK) is a 1.54m long, 0.45m wide, 0.7m high wall oriented E/W 290°. It is constructed out of 7 courses of the N.F.L.S. It ~~is abutted~~ interdigitates w/ CU 5 (CHIQUITO; see below) in the ~~West~~ West; and is abutted by CU 4 (MARCELLO) in the E.

CU 4 (MARCELLO) is a 1.18m long, 0.45m wide, 0.7m high wall; oriented E/W 290°. ^{It is constructed of 6 courses of NFLS} It abutts CU 3 (SHORT STACK) in the West and corners with (abutts) CU 2 in the east.

1.87
.45

1.42

CU 5 (CHIQUITO) is a 1.87m long, 0.4m wide, 0.83m high wall oriented N/S 19°. It is constructed out of 7 courses of NFLS. It interdigitates with CU 3 (SHORT STACK) in the S forming a corner. It ~~is~~ seems possible that as though CU 5 was originally 1.42 long and that later on a 0.45m long addition by abutment was added running N/S of the N end. Or this is the

2006-17-17

1 June 2006

CU 6 (FLAT TOP) is the cobble platform floor. It was found beneath every construction unit located on the platform's summit. It is constructed from flat laid cobbles. It was found in 21 EU's, including almost all the way across the summit, leading to the conclusion that it covers the entire summit. CU MARIE, CU 1, CU 2, CU 3, CU 4 & CU 5 were constructed directly on top of it.

CU 7 (BOB) is a layer of either a cobble surface or a stone layer on top of a clay fill layer. It is constructed of naturally unshaped cobbles, and is situated 0.33 cm above CU 6 (FLAT TOP) separated by a fill layer of dense clay. This clay layer makes CU 7 the same ^{surface} level as ^{the top of} CU 1 (STUMPY).

CU 8 (ELLEN) is a ~~fill layer~~ a unit of flat laid stone fill. It is ~~located~~ abuts CU 4 & CU 2 on its western side. It is constructed of ~~the NFLS~~, though, unlike the walls most of the stones ~~use~~ used were not rectangular/flat edged. It is ^{partially} the same height as CU 4 & is 7 ^{courses} high.

CU 9 (JUNIPER) is a fill unit that abuts the N side of CU 3 & the East side of CU 5. It is constructed out of 1 course of flat laid fill on top of 0.55 cm of clay fill (above FLAT TOP). It is even w/ the top of CUs 3 & 5.

2006-17-18

1 June 2006

CU 10 (GUS) ~~is~~ is similar to CU 7 (BOB) as it is either a cobble floor or fill. 2 layers of cobbles sit on top of 0.55 m of clay fill (Above FLATTOP). ~~making it even~~

~~In its first construction~~

The earliest construction phase visible ~~was~~ was a ~~pl~~ solid stone platform around 4m wide and \approx m long, and 1.81m tall. ~~It~~ It had at least 1 terrace, but most likely had two terraces off the north, plaza facing side. it was oriented 290° E/W

The platform had a cobble surface. The ~~structure~~ ^{Summit} had at least two columns space 4.2m apart ~~in~~ in the east AND a possible room in the west.

1.54
1.18

2.72

The room was approximately 1.87 wide x 2.72 m long. with at least partial stone walls, and a possible bajaque superstruc and ~~definitely~~ a perishable roof. A front entrance to this room remains unexcavated; however, ~~there~~ there was ~~open space~~ a 1.87m wide open space off the back side in the SE corner of the room.

This could not be used as an entrance since the platform is 1.81 m high & the walls of the room are situated right on the platform edge.

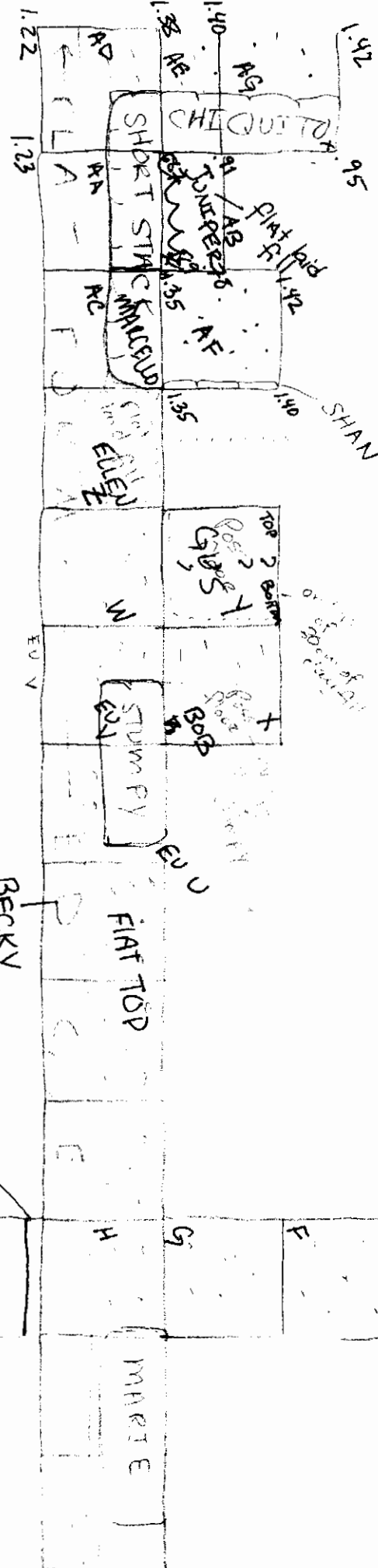
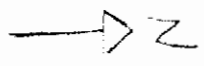
2006-17-19


1 June 2006

In a second construction phase fill both clay & flat laid stone was added both within the room & surrounding the columns, raising the height of the platform by approximately 0.5 - 0.8 m. ~~Possibly during this construction~~

It is possible that the room was filled at an earlier date than the rest of the summit.

A wall ~~was~~ constructed to interdigitate w/ fill was constructed to close the gap ^{open space} in the S facing wall of the room.



 = calculate platform
 SURFACE AREA = FLAT TOP

NOT TO SCALE

EX: 17