

2007

EPV 017 Hostenske Field Notes 2007

Mary Hostenske

Follow this and additional works at: <https://digital.kenyon.edu/honduras>

 Part of the Archaeological Anthropology Commons

Recommended Citation

Hostenske, Mary, "EPV 017 Hostenske Field Notes 2007" (2007). *Four Valleys Archive*. Paper 96953.
<https://digital.kenyon.edu/honduras/96953>

This Field Notes is brought to you for free and open access by the Anthropology at Digital Kenyon: Research, Scholarship, and Creative Exchange. It has been accepted for inclusion in Four Valleys Archive by an authorized administrator of Digital Kenyon: Research, Scholarship, and Creative Exchange. For more information, please contact noltj@kenyon.edu.

24 May 2007

2007-17-1

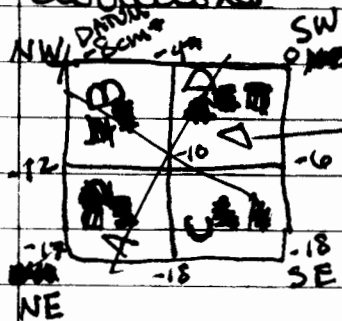
Slow start to work today. Since it is my first day I am working with Kieke (sp?) and Maximilliano. We are investigating a possible cobble structure in the middle of the plaza of El Guayabal.

Since it is part of a group of 4 cobble structures it was given its own name. This will be

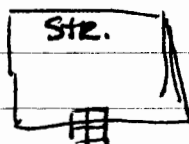
Op. site S-012. It is Op and Subop.

The str. I am starting with is on the NE side of the group; as the str. were not previously numbered, I am declaring it to be Str. 1.

As of 10 AM, Maximilliano has set a barbed wire (alambrado) around the str. and Kieke has cleared it. Salva helped me set up a 2×2 m ^{block of 1m} squares on the East side of the structure. I established a datum by ~~tie~~ tying the string to the NW most stake & marking is @ 8 cm above ground surface. Below is a sketch of the test pit w/ opening elevations:



barbed wire perimeter
Visible Rock



→ I hope it

We are starting to excavated EU^A. The first lot will be a 20 cm lot. The twenty cm will be measured from the ~~the~~ NW corner of the EU, since the area is higher than the rest of the opening ground in that EU.

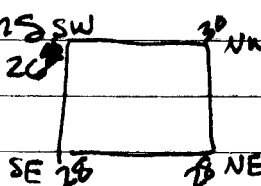
24 May 2007

2007-17-02

I took photos of the fairly cleared building. The ^{clear} clearing revealed several ~~decent~~ decent looking lines around the summit & plaza side of the str. I hoped didn't start too far out to find a wall quickly.

In EU 4, lot 1 we have found a few pieces of possible ceramics, they seem really rough & gritty which makes me suspect they are sand stone - will ask - they have been found so far w/in the first 10 cm. bgs.

Ending Elevations
EUA Lot 1 20' (in cm bd)



Lot Contents:

6 ceramics
1 obsidiana

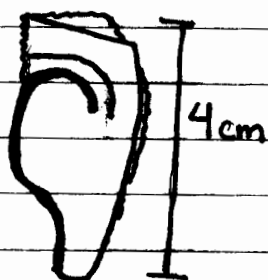
After they had cleared more off the top of the mound it became apparent that there were some possible lines visible on the surface & that I might be too far away. Therefore I am going to skip EUB and create a new EU (EUC) to the east. EUC seems like it might contain either a wall or tumble from a wall further east.

We are continuing w/ Lot 2 - another 20 cm in EUA - first. This should give a good soil cross section. Plus we have already found ceramic & bajareque, so it isn't a complete loss.

24 May 2007

2007-17-03

Well things are possibly changing again in EU A. It appears that we have hit a lense of ceramic. We found a very nicely ~~in~~ incised piece of orange paste. Another piece of what seems to be the same paste appears to be either part of a strap handle or a rim.

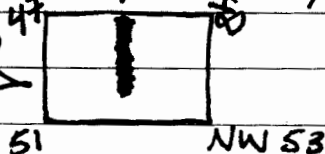


At ≈ 36 cm bs (in NW corner) we hit a soil change. The soil changes from a silty loam to a ^{hard} clay. We stopped finding lots of ceramics \approx the time of the soil change.

{ Strat I 0-36 cm bgl (in NW corner) = 10YR 4/3 fine silty loam
Strat II 36-? = 10YR 3/2 dense/hard clay

Ending Elevations

EUA Lot 2



All elevations in cm bd

Contents: ~~ceramics~~ ceramics = 72

\$ 1 poss.

✓ bajareque = 3

worked stone

also found a basic

handle - it broke into at least 3 pieces

Ceramics are really soft!

2/15/07

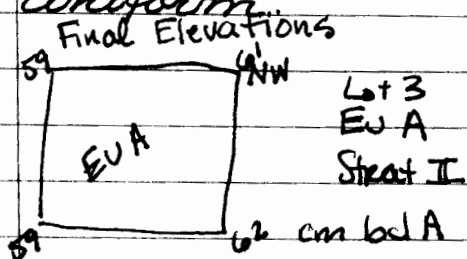
25 May 2007

2007-17-4

Today got off to a good start, besides the fact that I got mud ~~over~~ all over my clean white shirt while getting things out of the car.

Today we are going down another 10cm in EU A \rightarrow into the hard clay layer \rightarrow to make sure it is sterile soil. This will be Op. 12 Subop. 1 Lot 3. So far only one piece of ceramic has been found & that was from when Kieke was cleaning the sides of the unit.

Upon the completion of Lot 3 in EU A we will move 2 units West in order to hit Str 1 with minimal effort. I will create a new arbitrary datum at the top of the structure since the datum in the NW corner of the original 4 units I laid in is too low to measure the summit of the structure. I will then remeasure the areas I excavated in EU A to make everything uniform.

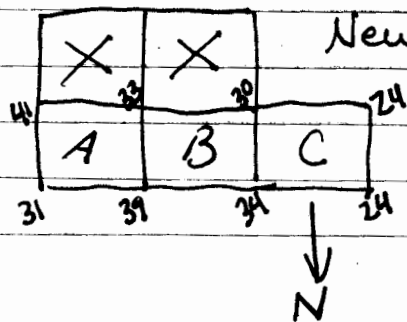


Contents: 2 ceramics.

\rightarrow I'm basically considering this a sterile layer.

The new datum placed on top of Str 1 is 10 cm off the ground. \pm 30 cm SW of the exposed rock.

The new ground surface measurements are as follows.



New Surface Measurements taken from Datum B (on top of Str)

Datum B is 21 cm higher than Datum A.

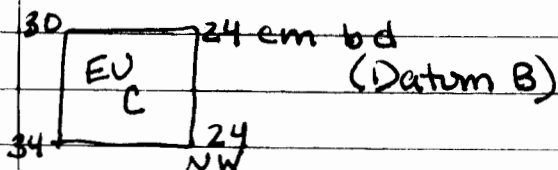
39
18
21

25 May 2007

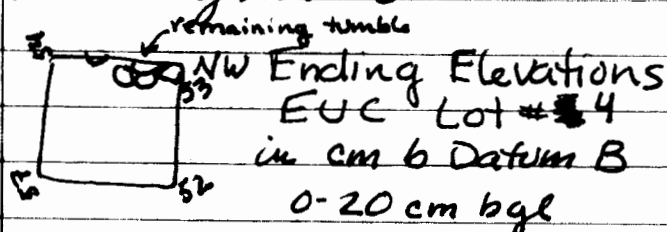
2007-17-5

We are now starting Lot #4 EUC.
EUC is located 2 m West of EU A. EU B is not being excavated due to time constraints.
EUC had visible tumble on the surface.

Opening elevations



Nearing the end of lot #4 EUC we haven't hit a lot of ceramic, which surprises me since we are almost 20 cm bgl & have been removing a lot of tumble. Normally more ceramics ~~are~~ are found mixed in w/ tumble. We did find a piece of rim - hopefully it's diagnostic.



Strat. I (same as EU A)
Contents: 2 obsidian chips
10 ceramics
1 bajareque

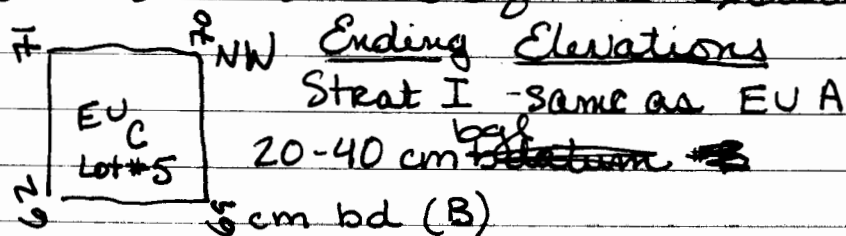
We are now continuing another 20 cm level in EUC - hoping to find more ceramics. This will be Lot #5 EUC and will take us down to ≈ 40 cm ~~the~~ bgl. \rightarrow actually 50 cm bgl due to rock removal.

We started finding more ceramics as we neared the 40 cm depth. We also started finding little pieces of soft bajareque. There was at least 1 rim sherd & one piece of ceramic had a light paste & remnants of red paint \rightarrow it ~~seem~~ to be a rim as well.

25 May 2007

2007-17-6

As we continued to clean/level off at 40 cm bgl (as taken in the NW corner of the EU) we hit a small carbon deposit. I took a sample, b/c of the hard clayey dirt surrounding it, it was very hard to get large chunks, so the largest was $\frac{1}{2}$ " wide. The carbon was found in the NW corner of the excavation.



Contents: 5 bajareque
1 obsidian (very small)
20 sherds (2 rims)

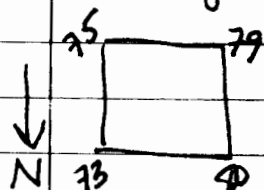
We are now starting Lot #6 in EU C. It will be a 10 or 20 cm level depending on the amount of artifacts uncovered and the hopeful appearance of the soil change. The soil is so tough, esp. the further we go down, I hate for them to ~~not~~ have to chunk through it.

We removed & sampled the other half of the carbon from the NW corner that just happened to fall into ~~our~~ Lot #6 instead of Lot #5. We still finding ceramics. Found two teeny pieces of obsidian. Have hit yel bn clay layer & am therefore stopping.
Strat II =

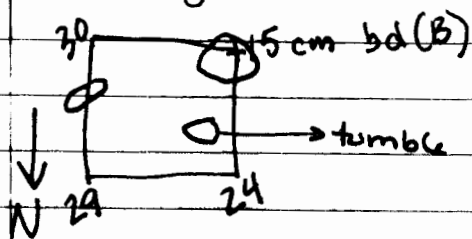
25 May 2007

2007-17-07

Ending Elevations for EU C Lot #6.



[Starting Elevations EU D]



26 May 2007

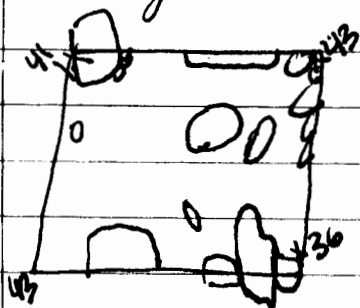
2007-17-08

Today I have two additional workers - Victor y Tene. Plans changed over breakfast, so instead of having them excavated El Guayabal Str 10 they are going to work on the S-012 str across the plaza from mine. They are currently chopping the str. Since it doesn't have a name, I'll call it Str. #2.

We are starting @ EU D Lot #7. The lot will be a 20 cm lot. (See starting elevations on previous page.) We are removing some tumble & have found a few pieces of ceramic, including a rim. We may have found a stone bead. I can't think of any other reason / weird natural cause that could hollow out a stone like this.



Ending Elevations EU D Lot #7



Strat I - same as EU A & C

Contents - ~~5~~ Ceramics ~ 2 rims from same vessel
1 poss. stone bead

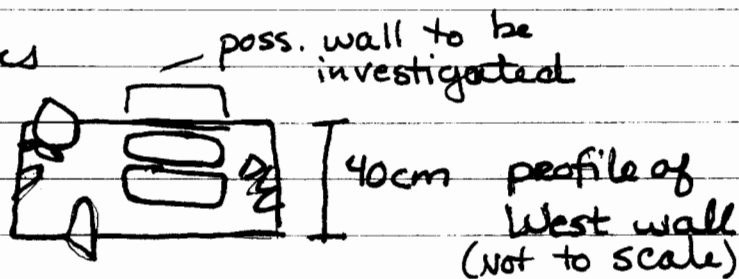
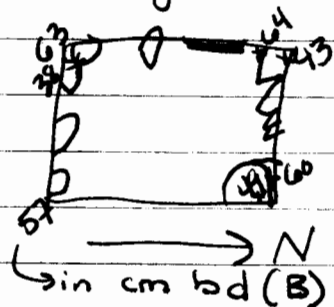
We are starting EU D Lot #8 - the next 20 cm to expose tumble & maybe find a wall.

26 May 2007

2007-17-09

We are continuing with EUD Lot #8, we have removed a decent amount of tumble & may have exposed part of the N/S wall, it is also possible that the wall runs E/W & we hit the end/the rest has tumbled.

EUD Lot #8
Ending Elevations



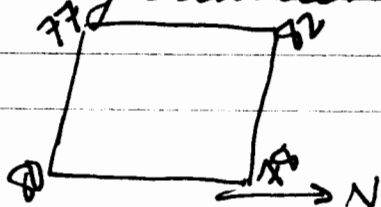
Strat I - same as in EU A & C
Contents = 20 ceramics (NO RIMS)
1 bajareque
1 obsidian flake
1 chert flake

We are now continuing with EUD Lot #9, a 20 cm lot - which will take it down to the same level as EU C. Will remove more tumble.

Tecno & Victor have finished clearing/fence building, but have been recruited by Marcello to cut down sight lines for the EDM.

We just found a piece of obsidian in Lot #9.

Ending Elevations Lot #9 EUD



Contents: obsidian ceramics
Strat: 50-60 cm bgl

26 May 2007

2007-17-10

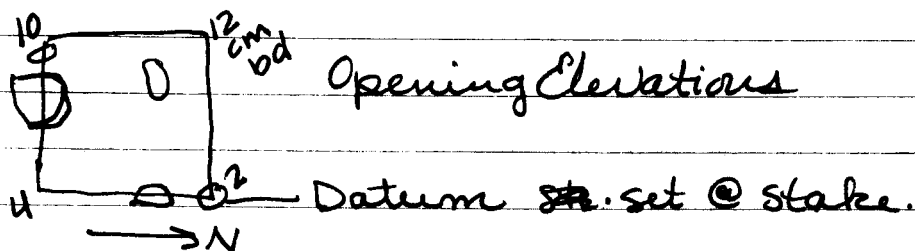
Teeno & Victor arrived & started excavating while I was writing lot cards. Hope they are doing ok! Gah!

These guys are faster / know what they are doing.

The datum is set in the NE corner of the unit. This will be EU A.

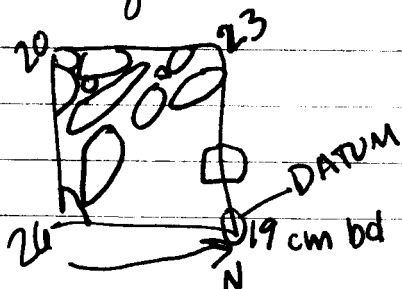
The first Lot (Lot #1 EUA Str 2) will be a 20 cm lot, the purpose of which is to look for a good example of cobble architecture and to collect a ceramic sample in order to prove it is a late Classic structure \rightarrow like Str 1.

We are uncovering a lot of what looks to be tumble. I located this pit closer to the summit of the Str than I did the ones on Str 1, so hopefully we'll find some architecture.



They have found a few pieces of ceramics. We have removed some tumble.

Ending Elevations

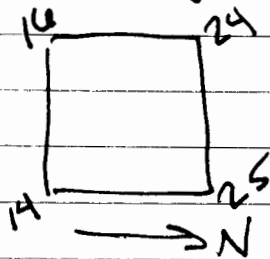


Contents: 7 ceramics
1 tiny obsidian

26 May 2007

2007-17-11

Starting Elevations EU E Str 1



Maximillions & Kieke are starting
Lot #10 EU E 0-20 cm bgl today but w/
only a few minutes left there isn't much
time.

Str. 1

28 May 2007

2007-17-17

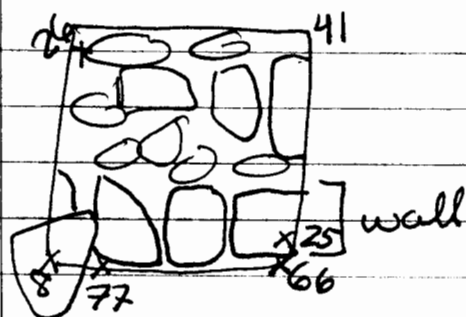
Maximiliano & Quique are continuing
lot #10 EU E; it is a 0-20 cm lot.

When they got to ≈ 10 cm bgl I noticed
two sets of possible rock lines. (1) A few inches
behind the border of EUD. (2) In the middle of
the EU there looks like there could be a poss. wall.

We are addressing the 1st question 1st by
clearing back to the faces of the possible
lines all the way down to the current floor/clay
level. Through cleaning we just uncovered
a third rock in line w/ the others - Looking
good so far!

Yeah! It turned out to be a wall!
Marcello thinks that what I think is
the other face of the wall is in fact
fill. We are cutting down in front of
it to see who is correct.

Wall 1 is two courses high & is
constructed out of volcanic tuff & the
wired flakey rock. The courses begin
about 5-10 cm above the clay layer (I
think).



Contents - 1 ceramics

2 tiny obsidiana

Strat I - same as before

Final
Took photos \rightarrow need to draw profile.

28 May 2007

2007 -17-13

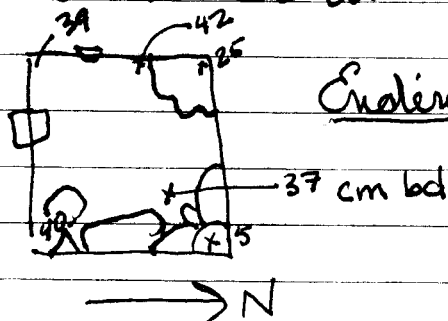
Maximillion & QuiQue are going to start a quick T.P. in the middle of the plaza btwn the two stras to see what's there.

This unit will be ^{Op Subop} 12/3. They forgot to bring the hammer & nails for the knibbed wire so the fence will have to wait until tomorrow. They are starting Lot #1 EVA in this test pit.

28 May 2007

2007-17-14

Tino & Victor are starting Lot #2 EVA at Str. 2. It will be a 20-40 cm bgl lot.

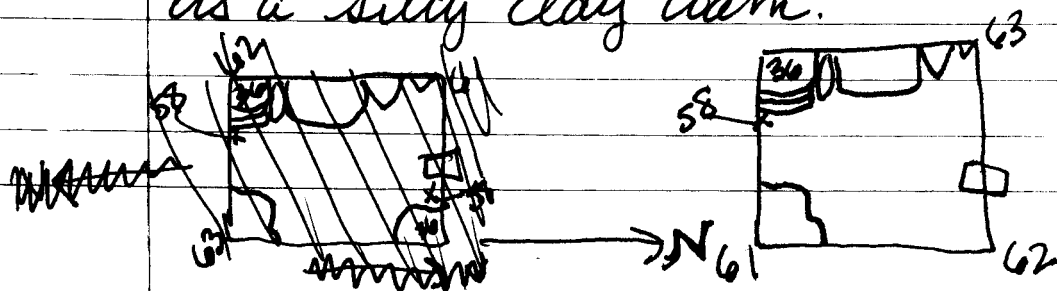


Ending Elevations

Contents: 17 ceramics, 13 bajareque - some look really burnt - ie

As I was running around looking for my tool kit this morning I missed a bunch of what went on. But the guys removed tumble and went down 20-40 cm w/out the benefit of a ruler. They found a decent amount of ceramics.

We are now starting Lot #3 EVA. It will be another 20 cm lot taking us down to 60 cm bgl. We are removing some tumble, but most of the rocks will remain until we expand East a unit ~~base~~ since I can't quite see if they are tumble or are part of something. We are finding more ceramics & other pieces of bajareque. We have hit an area of rather dk bn dirt - it's a silty clay loam.



28 May 2007

Op 12/2 Subop

2007-17-15

For Ending Elevations of Lot #3 EVA \rightarrow see previous p
Contents of Lot #3

ceramica 13 obsidian 2

basalt 17

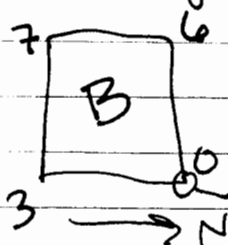
toba small - just a rock

Soils Strat I 0-2 cm bag

Strat II cm bag

We have now moved a meter East
to start unit EUB. Lot #4 in EUB will be a
20 cm lot to explore the rocks uncovered in
EUA & to collect a ceramic sample.

Starting Elevations for EUB



At ≈ 10 cm down it looks like
there is a soil change.

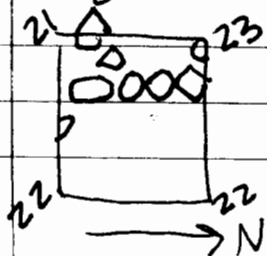
Moved datum to NE corner of EUB
since NE corner of EUA was too low to
measure from

*

NEED to saw total station stake down 6
cm - Marcello marked it on stake *

They have removed some tumble & found a few
pieces of ceramic, but that's about it for
EUB Lot #4.

It looks like they are uncovering a line
of small cobbles in the West $\frac{1}{2}$ of EUB!



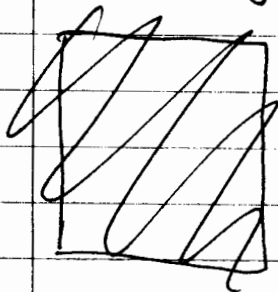
28 May 2007

2007-17-16

Op 12 Subop 2

Victor & Tino have found a wall!

Hurray! It may be 2 courses wide.



It is a wall & A step! Hurray!
Will clean & draw tomorrow

Contents 8 ceramic

Strat I & 10YR 3/2 silty (clay) loam

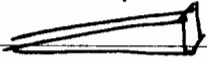
Strat III → fill/clay 10YR 4/3
w/ some inclusions
15/25%

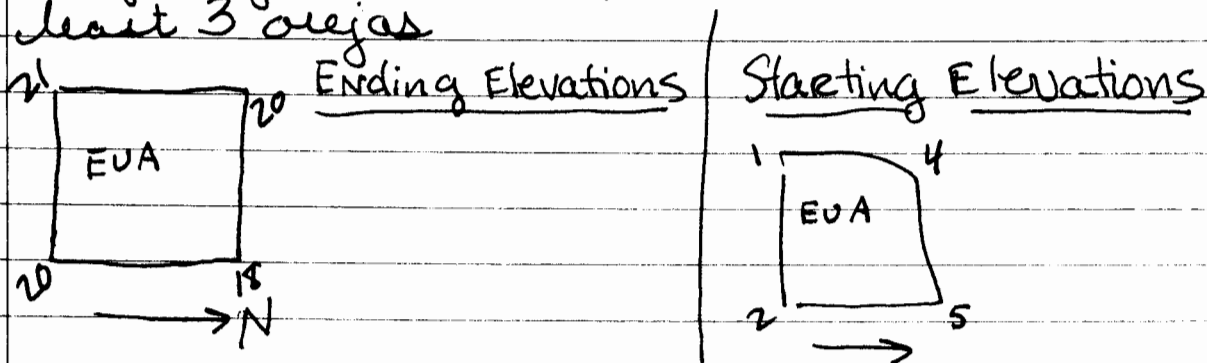
Strat II 10YR 3/2 w/
25% coarse
gravel
inclusions

29 May 2007

2007-17-17

Maximilliano & QuiQue are continuing w/ Lot #1 EUA of 12/3. This is a 20 cm lot. They just finished surrounding the area w/ fencing.

They are finding a decent amount of ceramics & found an interesting chunk of obsidian.  → i've never really seen anything like it. Of the ceramics there are at least 3 orejas



Bled
Jaaca
Pompeya

Stat I 104R4/3

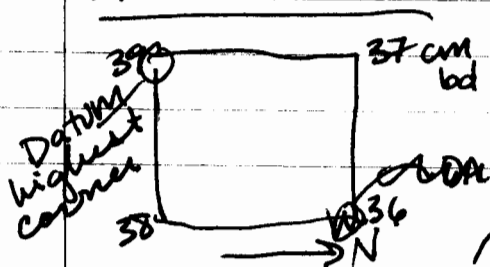
from SW corner

Contents

1 obsidiana

30 ceramica

We are continuing w/ Lot # 2 EUA in Subop 3. Lot # 2 is a 20cm lot (from 20-40). We've hit pay dirt @ ~ 25-30 cm bgl w/ 3 pieces of obsidian including the 1st blade frag. We've found ~~Also a large chunk of bajareque (it could be a rock thing)~~
Final Elevations lot #2



Contents: ceramica 58
obsidiana 8
Strat I

Lot # 3 12/3

104R4/3

was a 40-50cm strike level

~~2007~~ 29 May 2007

2007-17-18

Str. 2

Today we took the final photographs of the Test Pit on Str. 2.

Will draw either tomorrow or this afternoon depending on when I remember to get graph paper.

Bought a different type of banana from another little kid today.

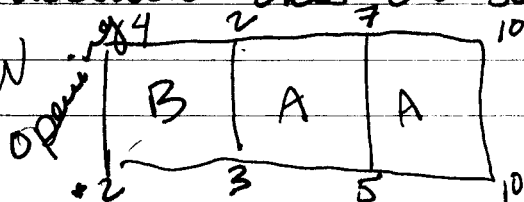
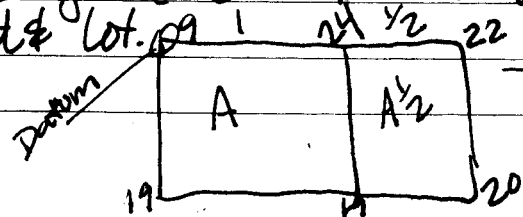
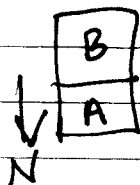
I hope I don't get sick. These are short & skinny vs yesterday's which were short & fat.

Victor & Tino are building a champa over the pit to protect it from the rain, like we had last night.

Since they are done, they are now going to re-clear Str 10 in Guayabal.

The test pit on Str 10 will be currently known as Op. 3 Subop 26 since we are currently supposing it to be part of Guayabal & not Late Classic S-012.

On the N side of the Str 10 we laid in a 2 unit pit. The guys have started to clear there & are finding what is either tumble or fill. We also laid in a 1 unit pit opposite the 2 unit pit on the south side of the str. Maximiliano & Quique may start this tomorrow. Have expanded EUA a $\frac{1}{2}$ unit to the North, in order to figure out what is going on in EUA. Will include this in same unit & lot.



30 May 2007

2007-17-19

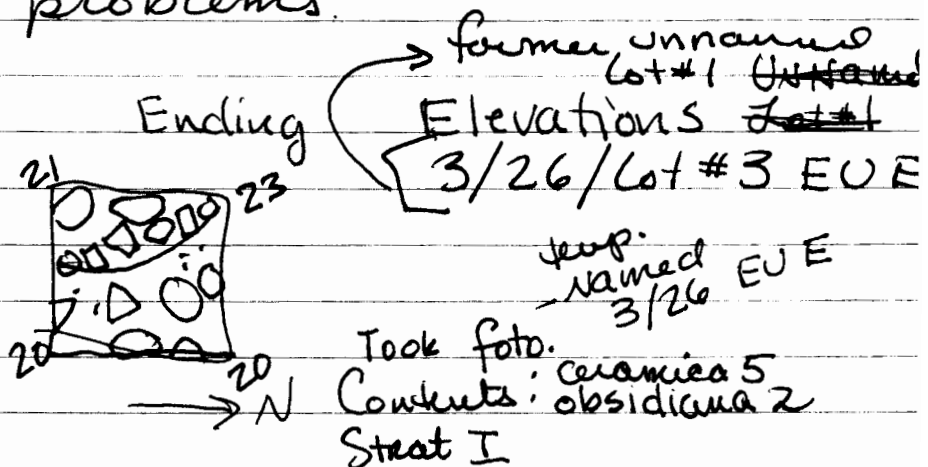
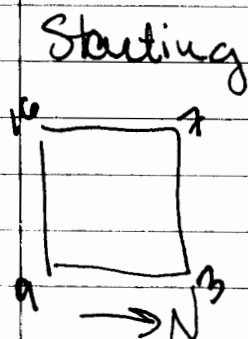
Today got off to an early start w/out Ellen & Marcello.

Victor & Tino are opening up EU B in Op 3 Subop 26. This will be Lot # 2, a 0-20cm lot. Hopefully what stones are exposed in this lot can help determine what is going on in EU A.

→ Maximillion & QuiQue are starting work in the Test Pit opposite 3/26 on Str. 10. It is located to the South of the other Test Pit. I am not going to give it a name just yet → I'm waiting to see whether this str is late Classic or not. Unfortunately, we aren't finding tons of ceramics. They are doing EU E Lot # 3 a 20 cm lot.

Victor & Tino have uncovered 2 lines that might be remotely possible. The one on the line btwn A & B has been shown to be tumble w/ the removal of 1 rock. There may be a N/S running line, however, that might require expansion to a new unit to the South.

→ Maximillion & QuiQue has uncovered a large nest of small red ants which are giving us some problems.



30 May 2007

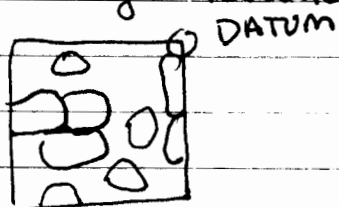
2007-17-20

→ Due to the interesting naming circumstances, I have made the executive decision to include the Southern Unit as part of Subop 26. Therefore Maximillion & QuiQue's unit is now EU E of 3/26. The 1st Lot in the unit will now be recorded as Lot #3.

It appears that EU A (Victory Tino) is comprised of flat laid fill. After doing a bit more investigating in EU B - to see if it is fill as well) we will do a bit down to see how many layers of fill there are. After Max. & QuiQue ~~continue their~~ finish EUE, I have them go to the next 2 units in order to find the start of the fill in the south. All in all the str is rather confusing.

Ending Elevations

Lot # 2 EUB



Contents: 7 ceramics
Strat I

Victory Tino are starting Lot #4 EUA. They are removing tumble & fill.

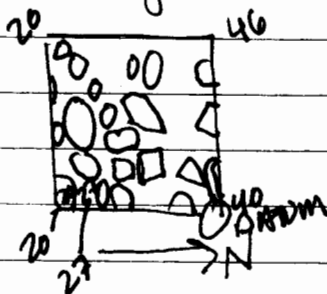
→ Max & QuiQue are starting Lot #5 EUE removing tumble to ~~ex~~ (hopefully) expose architecture

Tino found a chunk of Metate in Lot #4. Since it's all fill Lot #4 will be expanded to include EU B.

30 May 2007

2007-17-21

Ending Elevations EU E Lot # 5.



Contents &
3 ceramics
Shat # I

I am making our "refrigerator" down into EU B part of the same lot (Lot # 4).

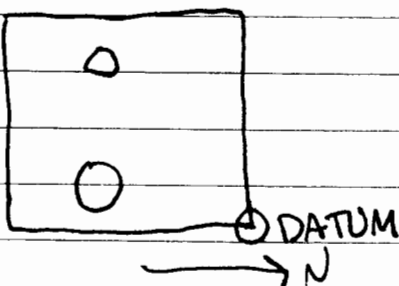
When we started they had already taken out 2 layers of Rocks.

→ Max. & QuiQue are starting EUD Lot # 6 it will start as a 20cm lot & we'll see where we go from there. It looks like we might be hitting full like rocks, so hopefully we will find the South Basal wall as well.

Victor & Tino are continuing down through the layers - they have reach a layer of really big Rocks.

I hope that everyone finishes today, b/c I need to draw tomorrow & since Claissa's Grandma passed away, I will probably be finishing her excavations this week as well.

Starting
Elevations
EU D
Lot # 6



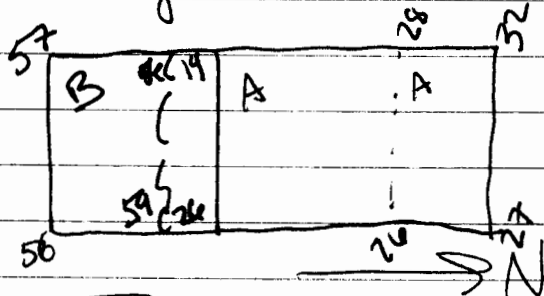
30 May 2006

2007-17-22

Ending Elevations

EU A & B

Lot # 4



Contents 34 ceramics
3 obsidiana
3 pendernat

We removed ⁴⁻⁵ ~~5-6~~ courses of rock though not all were visible in ~~the~~ a single side wall. Most of the layers were made up of medium sized (26 x 22 x 7) flat-ish rocks. The bottom layer, however was formed from larger rocks (though still generally flat) (50 x 25 x 17). Most of the rocks were volcanic tuff although ~~two~~ ^{two to four} pieces of basalt - including a metate ~~fr~~ were found as well.

→ Soils 10YR 3/2 ~ all the way down
DATUM in SW of EU A & NW of EU B

Will, unfortunately probably be continuing w/
3/26/6 EU D tomorrow.

So far the contents are: 42 ceramics

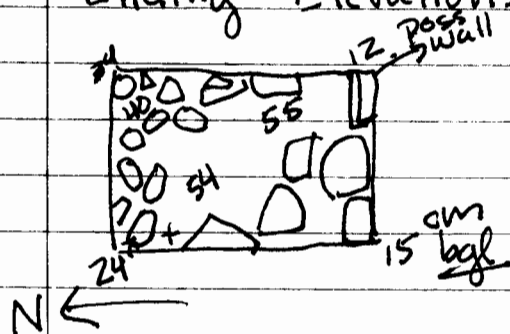
31 May 2007

2007-17-23

EU D (1x1.25 m) Lot #6

Ending Elevations

Contents: ceramics — (lots)



Street I

Now that I am cowering in the car due to torrential rain & ~~the~~ to my stupidity of not thinking to bring tarps to work under I can actually write my notes.

I started Victor y Tino on Lot #7 EU C. This will be a lot of indeterminate depth (prob ≈ 40 cm bgl) in order to uncover cobble - flat laid - fill.

~~Drum~~ Max & QuiQue are now starting an EU F to the ~~west~~ ^{east} of EU E. This will be a $\frac{1}{2}$ unit (1.25 by .5) w/ the purpose of seeing if there is a wall as possibly indicated by the 3 neatly stacked rocks in the NE corner of EU E. Lot #8

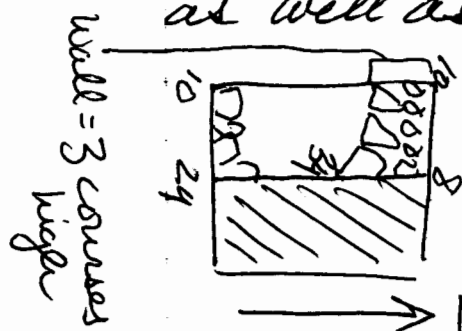
All this work was halted by ^{the} Rain.
Tomorrow I will bring tarps to work under.
I can't believe I was so stupid.

1 June 2007

2007-17-24

After we were abruptly & violently cut off by rain yesterday getting organized this morning is a bit of a challenge. Some of Clarissa's chambers fell in & the areas got soaked. Salva recruited Missa to help him rebuild them w/ bamboo & a better design. My excavation on str 10 is muddy, but nothing was damaged.

Max. & QuiQue are continuing Lot # 8 EU F a 50cm wide EU on the East side of EU E. We have uncovered a better preserved part of the possible wall uncovered in EU E. They have been finding ceramics as well as a chunk of metal.

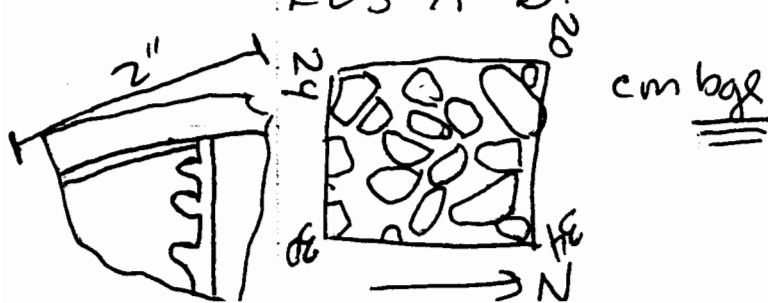


Contents: 98 ceramics
1 obsidian

Soils:

Strat I 10YR 3/2

Victor y Tino finished Lot # 7 EU C, by exposing a semi-flat laid fill - though it doesn't seem as well laid/preserved as EUs A-B.



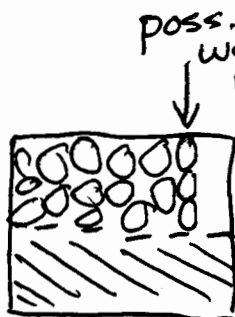
Contents: 31 ceramics
3 chert

Soils: 10YR 3/2 (Strat I)

1 June 2007

2007-17-25

Victor y Tino are now starting Lot #9 EUG - a $\frac{1}{2}$ EU N of EUA. We are going to do a line of $\frac{1}{2}$ EUs until we find the end of the platform.

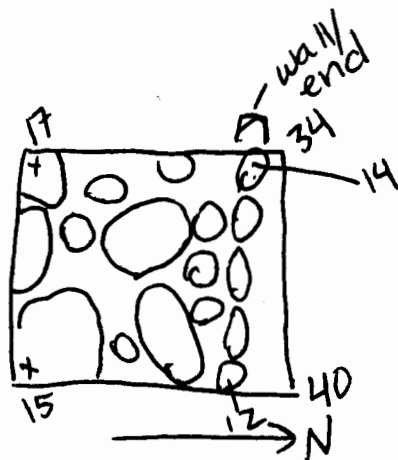


→ N

∞ We are expanding this unit to a full unit to better explore ~~embay~~ Contents: the area.

Soit:

Max. & QuiQue are starting EU H, a $\frac{1}{2}$ unit east of EU D. It will be at least a 20-30cm lot depending on what we find. This is lot #10. The purpose of this EU is maybe find a better preserved portion of the platform behind the area of better preserved wall.

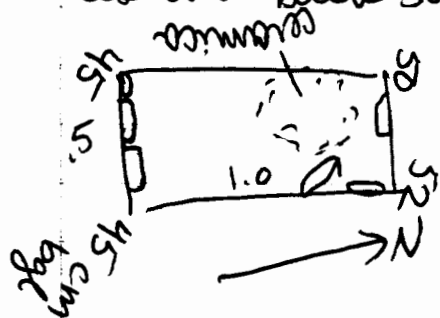


Contents: 1 obsidian - nice blade
15 ceramics

1 June 2007

2007-17-26

Max & QuiQue took EU H down to the same level as EU D. They found a large amount of ceramics on the N side of the wall as well as the back side of the wall



Contents: 1 mano
116 ceramics
1 obsidian
2 bags

2 June 2007

2007-17-27

I hope I have enough ~~stuff~~ for my guys to do. We had hoped that we could get permission to work in the grassy field but unfortunately he is out of town until Tuesday so I'm not really sure what I'll have people do until then. Right now we are clearing the str & area to take final photos. Then I'll have to draw, which will take a while b/c of all the stones & I don't have anything more for them to do.

We took photos of Str 10/Str. 5 ^(3/20) and I drove the guys over to work at Capital. Silvia helped me draw the structure & then we took photos of Clarissa's pits.

19 June 2007

2007-17-28

Today Pamela & I are starting work at El Zacatal, a pre-classic site Charlie found in his survey of the valley. It is located btwn Guayabal & Oreguidias but is farther from town than Guayabal. Because we need four wheel drive to get out here, Ellen will drive us out & pick us up at the end of each day.

The site is located on a farm in ^{cow} pasture. Since we only have 1 week to work here we are only going to do at most 5 test pits. We currently have four units laid out. ONE on top of Str 1, the ^(Subop #1) largest str, and one off the possible back of Str 1, Subop. 2. These are each 2(N) x 1(E) test pits. With the purpose of uncovering basic information about the site's occupations, architecture, ceramics in order to supplement the small test pits Charlie has already done.

Subop. 3 is a 1x1 located in the center of a possible patio/plaza. Subop. 4 is a 2(N) x 1(E) on the top of Str. 9 - opposite Str. 1. An attempt was made to align (more or less) all of the excavations. Pamela is going to supervise Subops 1 & 2 and I will supervise Subops 3 & 4. The guys are currently setting up fences & champas.

Don Ramperto did not show up for work today.

Filiberto is starting Subop. 4 Lot #1 EUA. EUA is the northern most EU. Lot #1 is 0-20cm. So far the humusy layer is pretty soft/easy to dig.

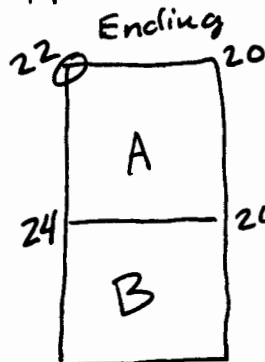
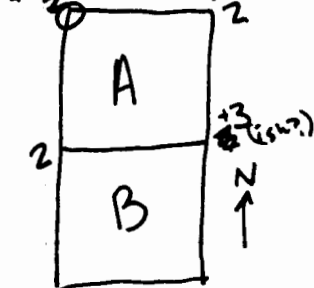
19 June 2007

2007-17-29

Subop. 4

Lot #1 in EU A

Opening/Surface



Contents: sterile

A little bit of carbon was found but not kept, since it was from a burnt out tree.

Filiberto & I are now continuing w/ Lot #2 a 20-40cm lot. Hopefully we will hit the structure in this level.

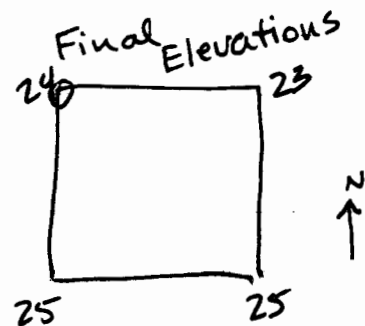
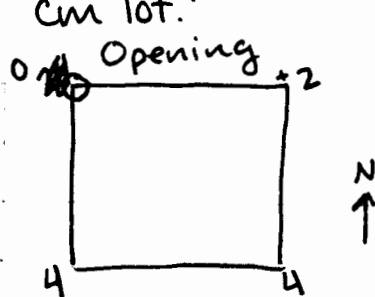
19 June 2007

2007-17-30

Subop. 3

Victor & Tino are excavating the test pit in the plaza btwn Stres. 1 & 9.

They have started w/ Lot # 1 in EVA, a 0-20 cm lot.



Contents:

2 ceramics

We came across a markable color change (black humus - light yel br clay) It is possible that this was the patio surface. Tomorrow I will take a photo & then we will continue through it.

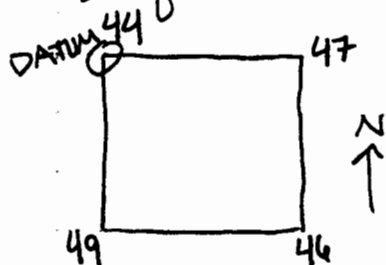
20 June 2007

2007-17-31

Subop. 3

This morning I had Victor & Tino clean the clay surface they found yesterday & I took a photo.

We are now continuing w/ Lot #2 EUA. This will be to investigate how thick the surface is. It seems to be fairly dense & thick.



Contents: Sterile

Soil:

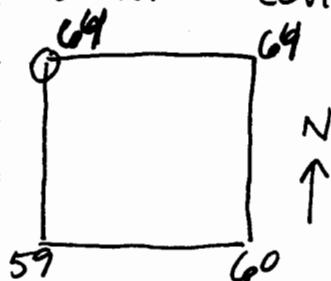
dense clay

~~15%~~

104R 6/4 mottled w/ 7.54R 5/8 &

20% 54R 5/8

We are now continuing w/ Lot #3 EUA a 40-60cm lot, just to be sure that this is a culturally altered natural surface & not a completely human constructed one.



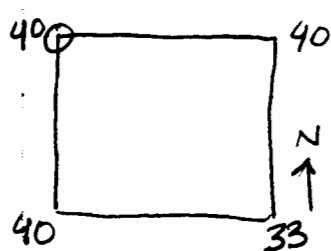
This was the final lot in EUA/Subop. 3. Victor & Tino are now chopping a new area to work in off the back of Str. 9.

20 June 2007

2007-17-1532

Subop. 4

Don Ramperto is back today. He didn't have his tooth pulled, but it is feeling better. Filiberto got a new big bucket to replace the small rickety one he has had. They are continuing Lot #2 EVA to 40cm bgl. We still haven't any clay layers, → which is making me rather nervous.



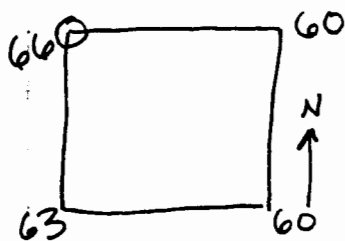
* need to re measure surfaces * not correct.

Contents:

1 ceramica (incised - though tiny)
3 peridernal

The soil is a lovely fine silty loam - stuff you want in your garden but we should be seeing signs of clay from the str.

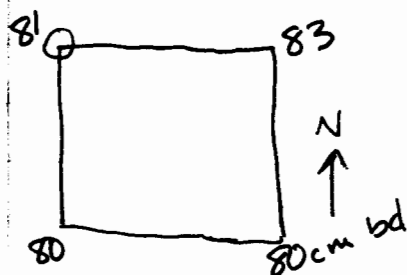
We are continuing w/ Lot #3 EVA, a 40-60cm lot until a (hopefully imminent) soil change.



Contents: 1 ceramica (rim)

Soil: We just hit change @ 60cm bd

We are now starting Lot #4 EVA, a 60-80cm lot w/ the purpose of exposing architecture.



Contents:

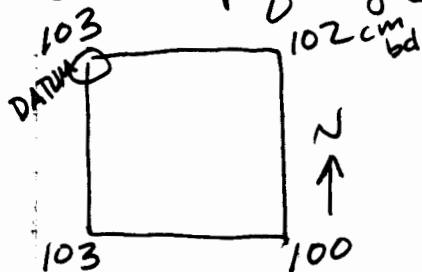
1 ceramica
1 peridernal
1 obsidiana

20 June 2007

2007-17-1033

Subop. 4

Fili & Ramperto are starting Lot #5 EVA, a 80-100cm lot. Hopefully we'll hit architecture soon.



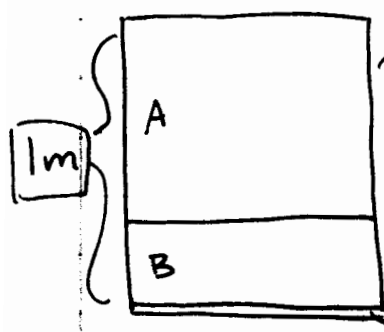
Contents: Sterile

Soil: finally hit structure @ 100cm bd.

This version is mottled 10YR 6/1 & 2.5YR 6/6 very dense clay
light grayish bn brownish yellow

We are continuing w/ Lot #6 EVA a 100-120cm lot to find the base of the str.

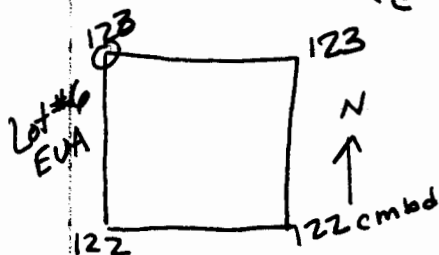
So far. . .



A. 7.5YR 3/2 dk bn fine silty loam

B. 10YR 3/2 very dk grayish bn silty clay loam

C. 10YR 6/1 mottled w/ 2.5YR 6/6 very dense clay



Contents: Sterile

Soil: mottled 10YR 6/1 & 2.5YR 6/6
very dense clay

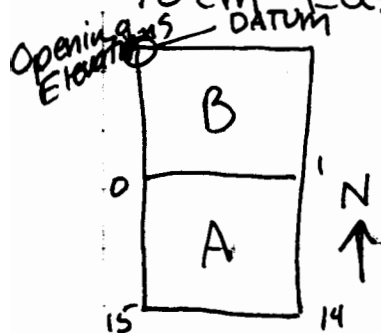
20 June 2007

2007-17-34

Subop. 5

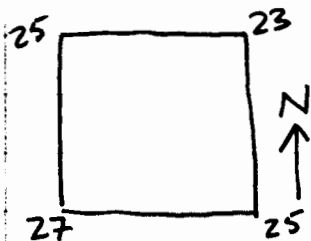
Victor & Tino are chopping an area off the back side of Str 9 which will become Subop 5 a 2(N) x 1(E) test pit - next to Charlie's test pit.

While digging a hole for a post ~~on~~ on the summit of Str 9 (East of Subop 4) Tino found 3 ceramics. Will ask how to label these. @30cm by Pamela y set up the test pit. It is 70 cm East of Charlie's test pit.



OPENING ELEVATIONS!

The first lot will be Lot #1 in EVA, a 0-20cm

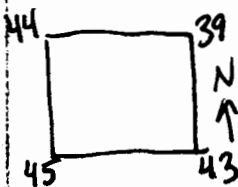


Contents:
Sterile

Soil: 10YR 3/2 fine silty loam

21 JUNE 2007

Today we are continuing w/ Lot #1 EVA. (See Also Lot #2 EVA, a 20-40 cm lot)



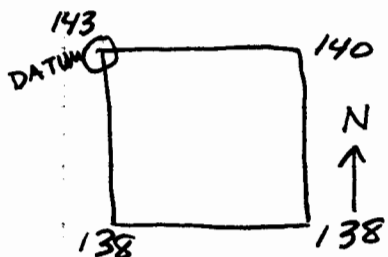
Contents:
12 ceramics
1 obsidiana

20 June 2007

2007-17-35

Subop. 4

Filiberto y Don Ramperto are continuing down w/ Lot #7 EU A, a 120-140cm lot. The purpose of this lot is to find the base of Str. 9, or an earlier version of Str. 9.



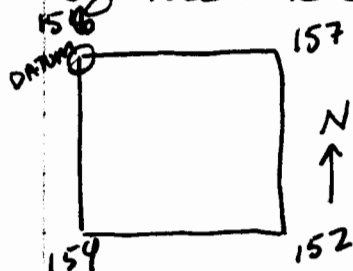
Contents: Sterile

Soil: 10YR 6/1 mottled w/ 2.5YR 6/6
very dense clay

21 June 2007

Today we are continuing w/ Lot #7 EU A.
(See Above)

We are now ~~to~~ starting Lot #8 EU A a 140-160cm lot, which will hopefully hit the base of the structure.



Contents:

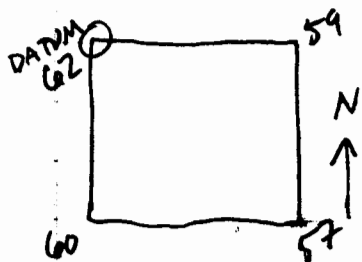
Soil: 2.5Y 7/1 (light gray) ^{dense} clay w/
2.5YR 4/6 (red) clay inclusions
(20%)

We are now starting EU B.

21 June 2007

2007-17-36

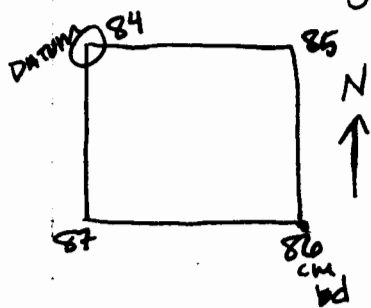
Subop. 5 We are continuing w/ Lot #3 EVA, a 40-60cm lot, which will hopefully expose either the floor or architecture.



Contents: 8 ceramics
1 obsidiana

Soil: humus fine silty loam
10YR 3/2

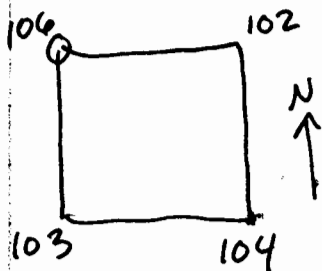
We are now starting Lot #4 EVA, a 60-80cm lot; hoping to find the patio floor.



Contents: 3 ceramics
1 peridernal

Soil: clay 10YR 6/6 (brnsh yel) mottled w/
10YR 6/1 (gry)

We are going to continue w/ Lot #5 EVA, a 80-90cm lot → to clean up the patio floor.



Contents: Sterile

Soil: clay 10YR 6/6 mottled w/ 10YR 6/1

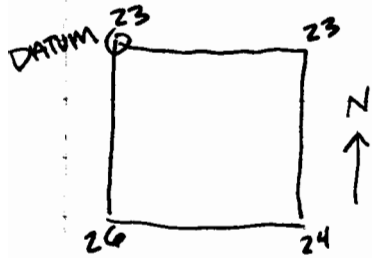
We are now going to start EUB Lot #6, a 0-20cm lot, in order to better understand what is happening in EVA.

21 June 2007

2007-17-38

Subop. 5

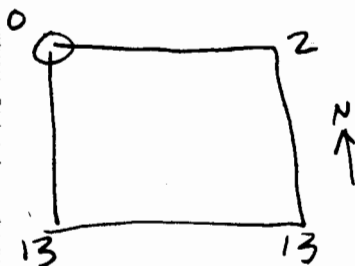
We are now starting EU B (Lot #6), a 0-20cm lot in hopes that what we uncover in EU B will help explain what is occurring in EU A.



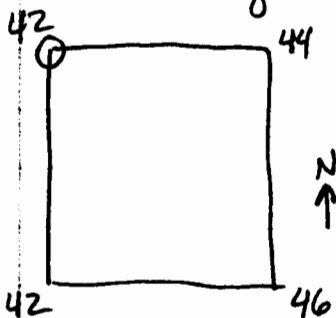
Contents: 6 ceramics

Soil: fine silty loam 104K3/2

Opening Elevations EU B



Starting Lot #7 EU B, a 20-40 cm lot.



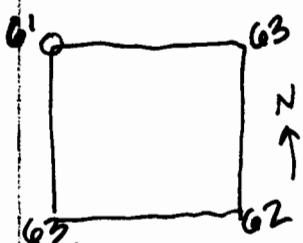
Contents: 11 ceramics

↳ 2 really big jar pieces

Soil: silty clay loam

22 June 2007

Lot #8 EU B, a 40-60 cm lot



Contents: 18 ceramics

2 large pedestal chunks

Removed large red basalt rock from top of floor.

Soil:

We are cutting through the poss. tamped earth floor layer.

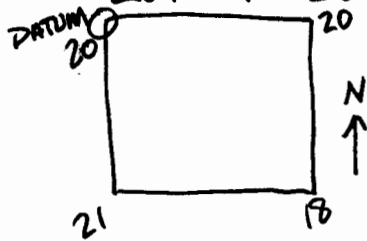
21 June 2007

2007-17-37

Subop. 4

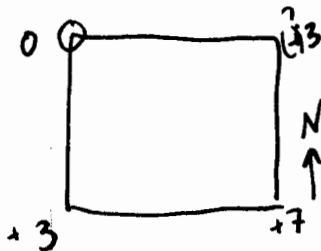
We went down to 160cm in EU A and uncovered 4 soil strata. UNSURE as to whether or not the two clay layers encountered are natural or part of the structure, we are moving to EU B. Once we get EU B down to the same level, we will do a probe to see if the clay color changes past 160cm - but we need the space from 2 EUs to do that

→ Lot #9 EU B, a 0-20cm lot. ←



Contents: Sterile

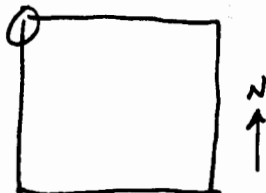
Soil: fine silty loam 10YR 3/2



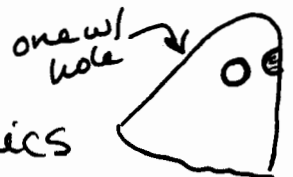
→ Opening Elevations

22 June 2007

We are continuing w/ Lot #10 EU B. This lot will include the removal of all humus, down to the top of the black silty clay loam - poss. tamped earth floor level.



Contents: 6 ceramics
1 obsidian



Soil: 10YR 3/2 fine silty loam

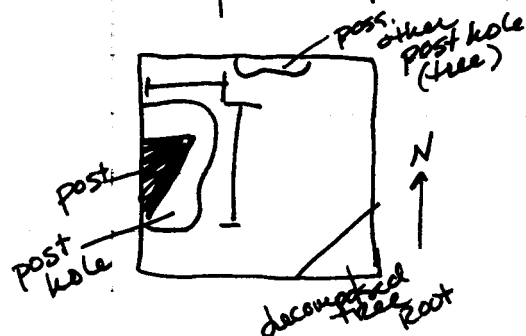
22 June 2007

2007-¹⁷⁻39

Subop. 4

In Lot # 10 (See pg. 37) we actually started finding a few ceramics. One ~~th~~ was modified - a hole was made and the rubbing on a string is visible. Keri said that sometimes when they ~~found~~

Although we are missing the black clay layer in part of EU B we found a post hole & post!



We are now going to clean everything, take a photo, & excavate the post hole.

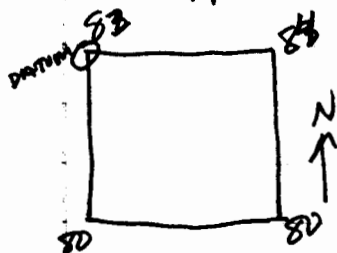
Pamela has now changed her mind & thinks that the yellow/gray clay layer is part of the structure. → Something I can agree with.

22 June 2007

2007-17-40

Subop. 5

We are continuing w/ Lot # 9 EUB which will continue to cut through the tamped floor to expose the clay.

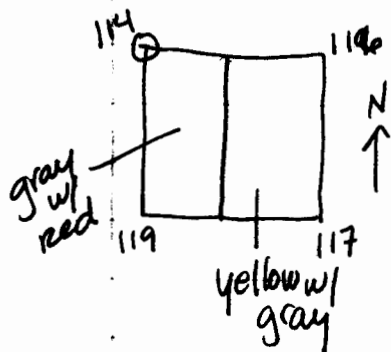


Contents:

1 ceramics

Soil: dk bn sid lm & yellow w/ gray clay

We are now starting Lot # 10 EUB which will take us to the same level as EU A.

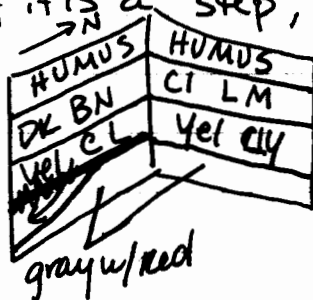
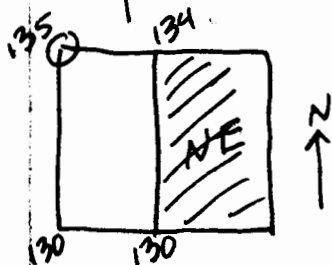


Contents:

Stirile

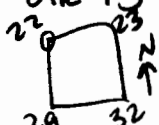
Soil: dense clay.

Lot # 11 EUB is a 10 cm lot in the west 1/2 of EUB w/ the purpose of determining where the gray clay starts → if it is a step, natural etc.



→ is most likely natural grade change.

Am going to start EUC, North of EU B. To help understand Ste 9's architecture. This will be Lot # 12 EUC.



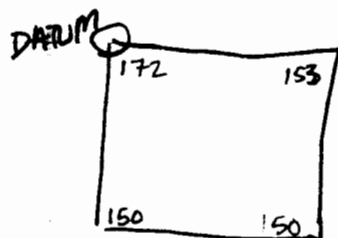
Contents - Stirile

22 June 2007

2007-17-41

Subop 4

We are starting Lot # 11 EU B. They got through $\frac{1}{2}$ of this on Friday & we will finish on Monday.



SOIL: Mottled clay w/ strong brown, yellowish gray, etc - STERILE
NO ARTIFACTS

25 JUNE 2007

We are finishing up Lot 11. It is a dense clay - the natural, sterile clay that underlies the entire site.

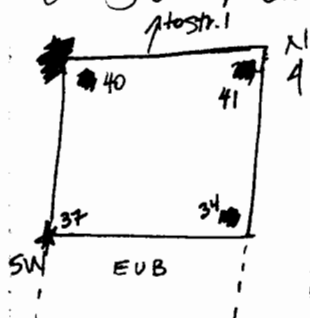
There are no artifacts coming out of this lot.

After this lot we will open a new subop on the front of Str. 9. This $1 \times 2 \text{ m}^2$ trench will work to further clarify the building's construction, which seems fairly simple at this point: a ^{culturally} modified natural clay that sits beneath a platform of clayey loam which was likely hard packed by foot traffic or tool tamping.

It is ready to be drawn and photographed.

OP 13
SUBOP 6
EVA

Subop 6 is a $1 \text{ m} \times 2 \text{ m}$ trench comprised of two EUs - EU A & B. It is located on the front of Str. 9 and runs w/ its long edge N-S.



datum is at the SW stake

We are starting w/ EU A, Lot 1 a 20 cm thick lot between 0-20 cm bgs
EU A is the northernmost of the units

This lot is removal of the topsoil (OVERBURDEN)

DARK BROWN SILTY LOAM. It actually ended up being 0-40 cm bgs
CONTENTS: 1 CERAMIC, 1 PEDERNAAL

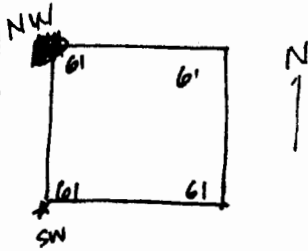
25 June 2007

2007-17-42

OP13
SUBOP6
EU A

Lot 2, another 20 cm thick lot, between ⁴⁰⁻⁶⁰~~10-40~~ cm
Continuing to remove overburden topsoil.

dark brown silty to clayey ~~soil~~ loam
Lot ended just around a soil change
most likely the plaza floor.



CONTENTS

37 ceramic

3 bajareque

1 pedernal

22 June 2007

2007-17-413

Subop. 5

We are starting Lot #13 EUC a 20-40cm lot.



CONTENTS

1 OBSIDIAN

7 CERAMICS

1 PEDERNAL

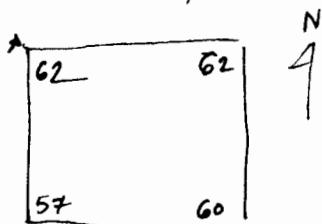
25 June 2007

Before excavations could begin this morning Victor & Tino had to first bail out the water in EUs A & B. There was also groundwater in Subop 3, but fortunately nowhere else.

The soil in Lot 13 is a dark brown clayey loam - as in the ~~the~~ previous lots in EU A & B. This soil seems darker than the topsoil above it. Artifacts suggest terminal refuse.

OPB
SUBOP 5
EUC

Lot 14, a 20 cm thick lot between 40-60 cm bgs



Soil is the same as in the previous lots

CONTENTS.

1 BAJAREQUE

4 CERAMIC

1 OBSIDIAN

25 June 2007 (Monday)

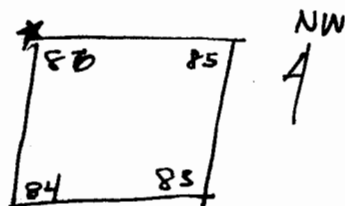
2007-17-44

OP 13
SUBOP 5
EOC

Lot 15, is another 20 cm ~~bag~~ between 60-80 cm bgs. About 80 cm bgs, we found part of a vessel
kind mammi-form. It even looks like there is a drill
hole of some sort in it. It is about
5 cm in diameter

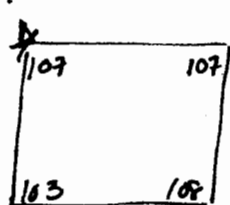


CONTENTS
8 CERAMICS



The soil in this lot is the clayey loam - dark brown in color. The lot seems to end just at a soil change

Lot 16 is a 20 cm lot, about 80-100 cm bgs. We are getting into a soil that is denser clay and yellowish brown. Sterile Clay.



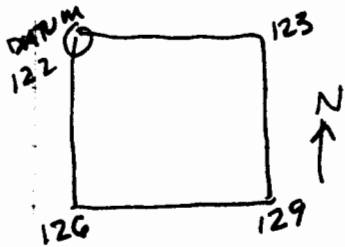
NO ARTIFACTS

26 June 2007

2007-17-45

Subop. 5

Today we are continuing ~~up~~ down ~~another 10 cm~~ to the same level as the floors/bottoms of the other EUs. This is Lot # 17 EUC.



Contents:
Stubble

Soil: gray & red clay

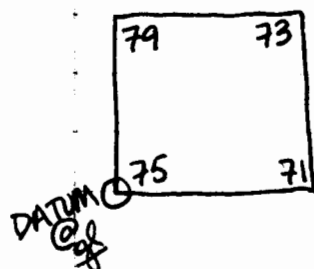
This was the final lot in EUC & in Subop 5.
Victor y Tino are now cleaning for
photographs.

26 June 2007

2007-17-46

Subop. 6

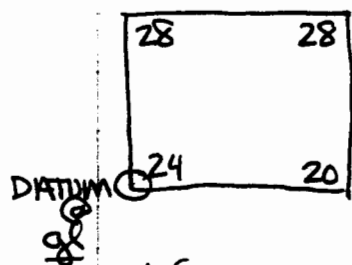
We are continuing down another 10cm in EUB to better expose the clay surface. This will be Lot #3 in EUB.



Contents: Sterile

Soil: yellow clay

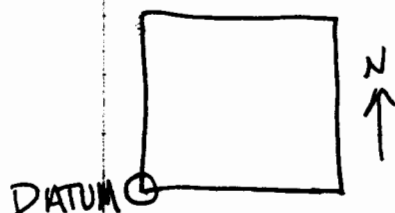
We are now starting EUB, Lot #4, a 0-20cm lot. The purpose is to expose architecture on the northern side of Str. 9 and show the relation between the architecture & the clay plaza surface.



Contents: 2 ceramics
1 obsidiana

Soils: fine silty loam 10YR 3/2

We are now continuing with Lot #5 in EUB a 20-60cm lot to cut through the tamped earth floor.



Contents: ^{more than} 113 ceramics*
3 obsidiana
4 peridermal

Soil: dk bn si cl lm

* See next page *

26 June 2007

2007-17-47

In EU B while excavating Lot #5, Filiberto & Don Ramperto uncovered at least one partial vessel - possibly 2.

The main vessel (#1) was found at 54 cm bd in the Northeast side of EU B. Since it appeared to continue into the sidewall, we opened a half EU (EUC \rightarrow 1(N) \times .5m(E)) east of EU B. It is included as part of Lot #5 due to the nature of the deposit.

Lot #5 includes the artifacts associated w/ the vessels, other ceramics from the lot, & ceramics that were not known to be part of the vessel, but are actually part of it.

Lot #6 includes the pieces of mamiform vessel from EU B. There are three bags. The drawing is labeled w/ coordinates - so are the foil packets of vessel. The horizontal coordinate is listed first. There is also a foil packet of associated, but pieces of unknown provenience.

Lot #7 contains a partial vessel (#2); which appeared to be different & which was found at 49 cm bd in the center of EU B.

Lot #8 contains the rest of the partial vessel (#1) which was found in EU C.

Vessel #1 was a 4 footed mamiform vessel. 3 feet were in EU B & 1 was in EU C.

The area around the vessel seemed that it may have been partially burnt & small pieces of CARBON were collected. Several obsidian blades & perdernal blades were also found.