

2008

## EPV 017 Hostenske Field Notes 2008

Mary Hostenske

Follow this and additional works at: <https://digital.kenyon.edu/honduras>



Part of the Archaeological Anthropology Commons

---

### Recommended Citation

Hostenske, Mary, "EPV 017 Hostenske Field Notes 2008" (2008). *Four Valleys Archive*. Paper 96961.  
<https://digital.kenyon.edu/honduras/96961>

This Field Notes is brought to you for free and open access by the Anthropology at Digital Kenyon: Research, Scholarship, and Creative Exchange. It has been accepted for inclusion in Four Valleys Archive by an authorized administrator of Digital Kenyon: Research, Scholarship, and Creative Exchange. For more information, please contact [noltj@kenyon.edu](mailto:noltj@kenyon.edu).

18 June 2008

2008-17-001

Yesterday, Ellen, Santiago & I gave Catalina & Stefanie a site tour of El Cafetal & Los Naranjitos. We also visited a Guyabo tree-less El Gyual - quite a site! ~~to~~ The half of Los Naranjitos that had previously been covered by coffee trees has been cleared exposing the 4 1/2 structures we were previously unable to excavate & see at all. I was hoping to see if the architecture of these structures, which on the surface appear similar to Str 5 - the blown out str I excavated in 2005 - were more intact & could ~~there~~ <sup>there</sup> be used to posit some idea of the ~~structure~~ <sup>architecture</sup> of Str 5, since all we had ~~was~~ were 2 short/preserved walls. I hope that Str 10, the end str of the patio group, which is similar in size will offer a better alternative. The tumble on Str 10 is more exposed than that of the other two large structures (Strs 11 & 9).

The main point of my work here though is to collect comparative data/sample commoner & elite households for my diss/pre-dissertation. So while Cat. & Stef. & EEB & Santiago are shooting over from Cafetal (it took 3 jumps/stakes to reach a spot btwn Strs 9 & 10 which should cover the patio group) I am sitting here on Str 10 deciding where I want to put test pits.

Cat & Stef will each have 2 workers and I will have 4-6; 4 this week. I was going to put them on either side of Str 13, the smallest/ rather isolated str. Although now looking at the map, I think I need to check the

18 June 2008

2008-17-002

locations of Stes 7 & 6 to make sure that Ste 7 (which was on the map ~~on~~ before 2005) is not what EEB added as Ste 13 in 2005. I am not sure whether or not Ste 13 has been mapped w/ the EDM or whether she just sketched it in b/c of the coffee. Depending on the size location of Ste 7 & 6 I may have the girls do Ste 7 instead, since it def. not an elite residence, although such low platforms could also be storage.

Also need to compare map to landscape for S-09 to see if those are the low mounds we noticed in <sup>Dou</sup> Ernesto's <sup>brothers'</sup> field. They appear to be a patio group which would be good for study. Tomorrow will be CRAZY! Also need to think more theoretically about what I want to do / READ.

19 June 2008

2008-17-003

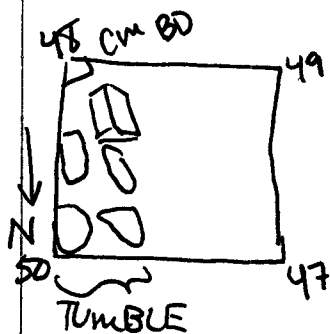
Well, now that the sun is brilliantly shining over the pit I am working on, I can now start excavating (w/ Dimas) and start my notes for the day. I spent the morning laying out Subops 14 & 15 on Str 13 - after wandering through monte looking for Str 7. We are starting off 1x2s. I placed them in approximately the center of the Str (E-W) one on the front - plaza side facing the back of Str. 11. Stefanie is excavating Subop 14 w/ Chepe on the plaza side ( $N=2^x$ ,  $E=1$ ) and Catalina is excavating Subop 15 on the back of Str 13 with Paco. There was a bit of confusion w/ Paco about the ~~use of~~ <sup>stake</sup> idea of only going down 10cm from the top & then evening out the unit to that level. Cat. got a bit upset by this since I had asked for 10cm to start with. I think that we have worked the situation out - line levels.

Subop 16 I am currently working w/ Don Dimas (?) on the west side of Str. 7 - a corner of a canoe sized platform. When Chepe was helping me lay out the test pit we found what is most likely the basal wall in the remains of a fence post hole. - Note I appear to be sitting in an ant hill / Dimas is chasing them away with his work. Subop 16 is a <sup>(N)</sup> 1x2 (E) on the W side of Str 7. The first lot has turned into an approx 20cm lot since to start I was unaware that Dimas wasn't good w/ numbers. So far we have uncovered 2 pieces of tumble and 3 tiestos all below 10cm. It appears to

19 June 2008

2008-17-004

deeper than we thought. Dimas is making the lot level up the 20ish cm it was on the (lower) West side of EU A & then we will measure from the datum which is in the NW corner of EU B. Since EEB & Santiago already shot in my pit & gave me the points it will be easy to calculate from here. We are now up to 6 pieces of pottery including one that EEB says may be Casaca - it has distinct vertical striations I am going to stop my lot here - it is fairly even & Dimas has gone for water plus it is almost time to go.



Subop 16 lot #1  
3 ceramica

By the end of the day both Stef & Cat. had finished their first lots in EU A of Subops 14 & 15. Subop 14 - Stef has uncovered what looks to be a nice wall, she will continue to remove tumble and will cut down in front of the possible wall in her next lot. Cat. has (Subop 15) & uncovered some of what looks like tumble and hopefully - with out too much prompting will cut down & it & remove it in her next lot. She also apparently had a soil change.

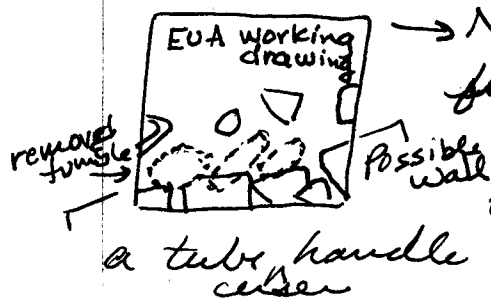
20 June 2008

Subop 16

2008-17-005

Today Dimas and I are starting w/ lot #2 in EU A, it will be a 10 cm or 20 cm lot taking us down to about 40 cm bgl. Came across some of those weird bottles - both the black & red types. The soil has become more clayey and seems to be lightening, similar to the change in Catalina's unit.

It rained some last night - so it is a bit moist but since the pits aren't that big it did not really affect them. Amazingly the banana leave "tarps" worked pretty well. Some, possibly Victor (?), was put in charge of gathering the wood to (actually Leonel) make the fancy El Paraiso style changas. ~~Found~~ Finding few sherds. - one <sup>jar</sup> rim w/ red painted interior. One large diamond shaped sherd may be a sherd too (!?) will have to wash it & look for wear. (1.5" x 2") Dimas has uncovered some tumble leaving against a possible low wall, he was clearing well around one of them & pulled out a piece of ceramic, so I had him pull them out and clear back to the possible wall. He was clearing around one of the wall stones & didn't find anything under it, it is either a one course / loose wall or tumble itself. Have found two small pieces of obsidian as well.

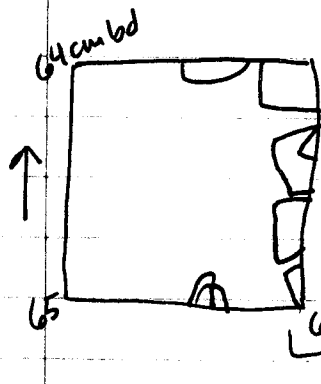


→ N We are now finding more tiestos from underneath the tumble & more obsidiana. Dimas is making everything flat. May have found part of

20 June 2008

2008-17-006

## Subop 16



Finished/leveled lot #2 in EU A.

Contents: 48 ceramics

4 obsidiana

1 peridermal

Although we will return to take EUA to sterile, I decided to move on to EUB in order to clarify whether or not the possible wall uncovered in EUA is a wall or not before we undercut it too much.

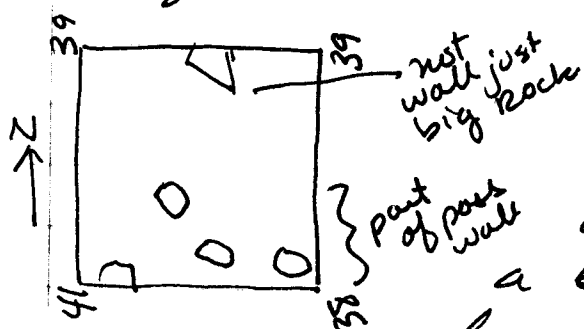
Starting EUB lot #3 which will be a 20cm lot - based on the height of the datum on the SE corner of EUB. → this is to attempt to rectify the leveling problem we had at lot #1 in EU A. Dimas started by expanding the hole - most likely a former animal home, since I formed & then tripped into a hole in another part of its residence. What was thought to be the basal wall could be seen in the hole; however, now that some expansion has been done, it appears as though the "wall" does not continue and is in fact primarily a large rock. Will continue with lot #3 tomorrow and hopefully uncover an actual wall.

21 June 2008

Subop 14

2008-17-07

Today Dimas was joined by Exemigas and we finished Lot #3 EUB.



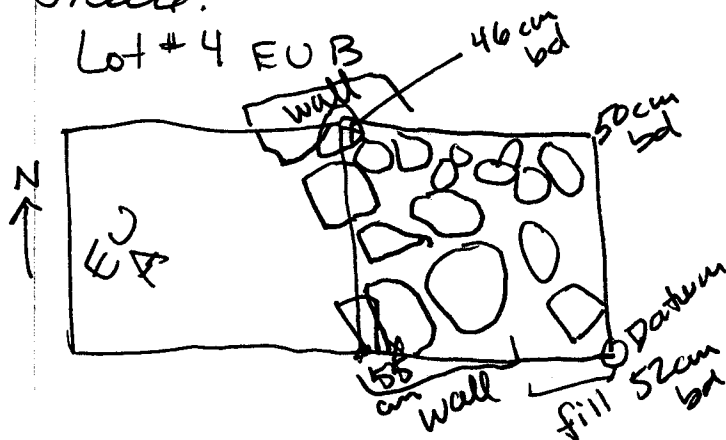
Contents: 10 ceramics

We removed one piece of tumble & discovered that that what I was hoping was a basal wall was in fact a large rock. Some small, irregular rocks in the W side of the unit may be part of a wall with the rocks we left in EUA.

Lot #4 EUB is taking EUB down to the same level as EUA in order to investigate the possible wall. We are finding more ceramics than in the previous lot. Just found my 1<sup>st</sup> whole (not broken) obsidian blade! Took photo. It is  $\approx 1.5$ " by .5". Have cleared down and uncovered a rough layer of rocks. I think that there was a crude cobble wall that runs angled btwn EUA & B & that the rest of the rocks are fill - although not the nice flat fill of the elite str. Will take photo & sketch & then start new lot that will include removing some of the rock fill & going down further to sterile.

Lot #4 EUB

Contents: 1 obsidian  
58 trestos





21 June 2008

2008-17-08

## Subop 17

Subop 17 is a 1(N) x 2(E) test excavation on the plaza side of Str 9 (# from Marcello's map). I chose to put pits on Str 9 since it serves both as an example of large elite residential str at Maranjitos and since it is situated at the normally significant location both in the west and also it forms the end of the plaza. I am placing test pits on both the front & back of the str. Subop 17 is located on the front Plaza/Patio side. ~~Str~~ The subop is located in the approximate center of the str's front w/ the goal of uncovering basal architecture and w/ collecting as ~~an~~ representative artifact assemblage. Filiberto is currently toiling alone on this, although he will be joined by Jorge on Monday.

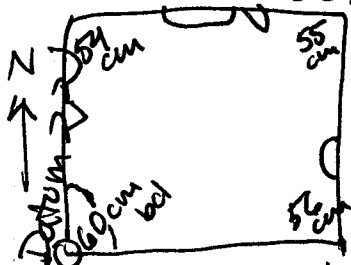
Lot #1 EUA (the easternmost EU) is being excavated to a depth of between 20-30cm bdl. Datum is currently at the SW stake of EUA. Some tumble and few to no artifacts have been recovered. The soil is still primarily humus.

23 June 2008

We are continuing w/ Lot #1 and are removing more tumble.

Lot #1 EUA Final

Have removed all tumble & reached clay.



Contents:

4 ceramics

1 pederual

Lot #2 continuing 10cm into clay.

21 June 2008

2008-17-09

## Sub op 18

Subop 18 is on the west (back) side of Marcello's Str. 9. The purpose of Subop 17 is to expose basal architecture and to hopefully find a midden. Due to the unfortunate locations of several trees (stumps) the 1<sup>st</sup> 2<sup>nd</sup> (E) test excavation is located south of center.

Lionel & Jose \_\_\_\_\_ (?) are working together on Lot #1 EVA. EVA is the west most EU. It will be a 20-30 cm lot, depending on the slope.

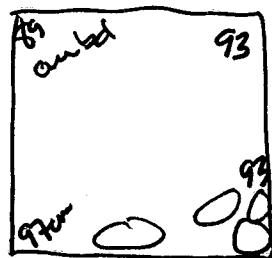
The lot has become about a 40 cm lot due to the removal of large tumble. No ceramics/artifacts were found in the humus/topsoil layer, but once they removed the tumble and cut into a lighter yellowish clayey layer they have found more ceramic and a big hunk (1") of worked obsidian. May have found part of a figurine frag as well.



I'm just going to have them go down until they run out of tumble as one lot. Tumble continues into the yellow brown. Found a

cockroach & attempted to relate Joe's Apt. story.

Lot #1 EVA final



[Return located at SE corner of EU B.]

Contents: see bag/count

39 ceramics  
1 obsidian  
1 bajareque

23 June 2008

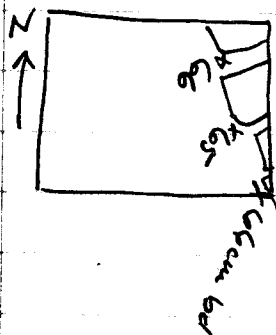
Subop 16

2008-17-10

Lot #5

EU A/B is a cleaning lot in front of the wall. To clean back to the front of the flat faced rocks.

Contents: 1 obsidiana  
48 ceramica



Lot #6 EU B

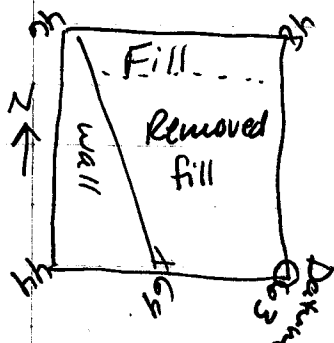
We removed an area of the fill behind the wall to see how deep it was. We removed approximately 2 layers of jumbled irregular rocks. This was definitely a low platform.

Contents:

26 ceramica

1 pedernal

4 obsidiana



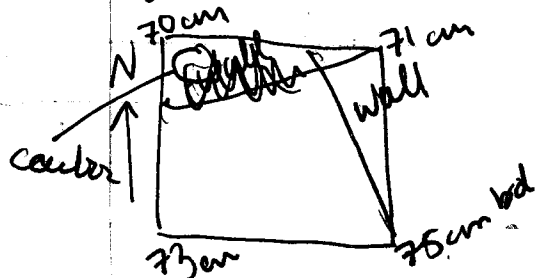
Lot #7 EU A will be a 10-20 cm lot in front of the wall w/ the aim of taking the unit down to strata & recovering ceramics. are recovering lots of ceramics & a small carbon sample from the NW corner.

Contents

33 tiestos

2 obsidiana

carbon



23 June 2008 Subop 16

2008-17-11

Starting Lot #8 EVA a 10 cm lot to reach sterile soil on the West side of the wall. They arrived at a dense yellowy brown clay layer that was sterile.



Contents:

15 ceramica  
5 obsidiana

Since we have arrived at a layer of sterile clay & since Stefanie in ~~Subop~~ Subop 14 has arrived at a similar sterile level we are stopping excavations here and will photograph & draw this.

Dimas & Nehmias are going to help mediana & help Fili since he is working alone on Subop 17.

Am doing both a section & plan drawing to keep in line w/ other excavations.

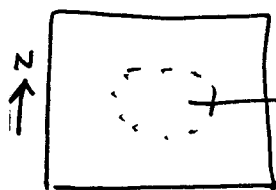
24 June 2008

2008-17-12

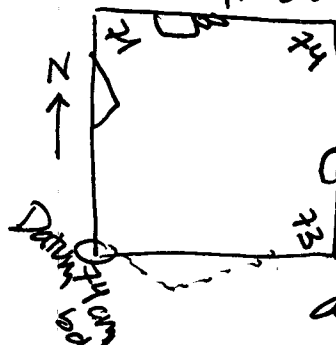
## Subop 17

Today we are continuing w/ Lot #2 which consists of a lot under removed tumble in search of sterile (most likely yellow brown) clay soil.

We found carbon. At 74 cm below datum. We are also finding a significant amt. of ceramics at this level.



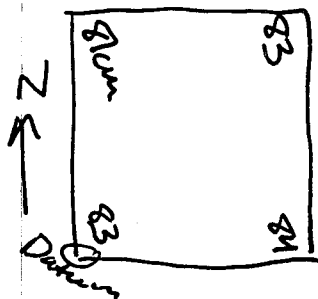
Lot #2 final EU A



We have cut  $\approx 10-15$  cm into the sterile yellow brown clay layer found elsewhere, but are still finding ceramics, and carbon - we found a second bit as well, which being from the same area was added to the <sup>ongoing</sup> carbon packet.

Contents: 63 ceramics 1 peridernal  
Carbon 3 obsidiana 1 toba

Lot #3 EU A, will be a 10 cm lot to determine if the yellow brown clay is sterile or not. If we continue to find things then it will become a 20 cm lot.



Contents:  
3 obsidiana  
1 peridernal  
15 ceramics

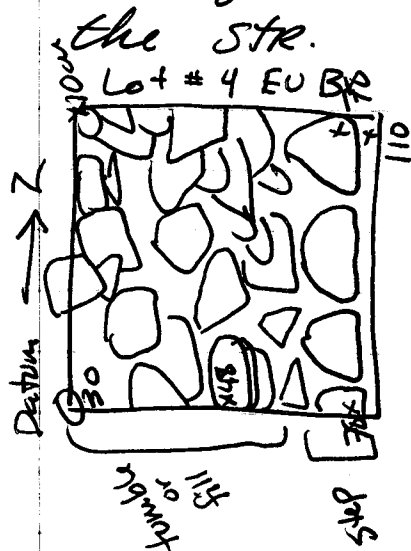
24 June 2008

2008-17-13

## Subop 17

I have decided to continue into EU B to look for a basal wall, since Catalina is investigating the actual sterility of the yellow brown in the plaza.

Lot # 4 in EU B involves the removal of tumble until the second soil strata - which is where the tumble stopped in the (last) EU A. They have uncovered part of a nice looking - so far at least - step. They are continuing to excavate along the top of the step towards the interior of the STR.



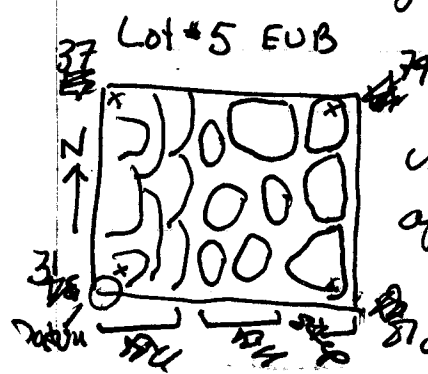
### Contents

1 obsidiana

7 ceramics

1 chert

I took a photo & we are now removing tumble & searching for a next step in Lot #5.



Removed about  $\frac{2}{3}$  EU of fill but did not find another step - did uncover part of nice cobble floor - am opening next unit for more fiddling & etc.

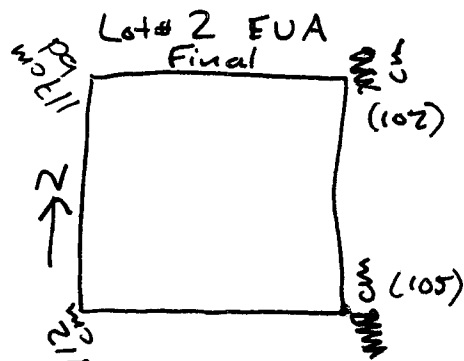
[Contents: 5 ceramics]

23 June 2008

2008-17-14

### Subop 18

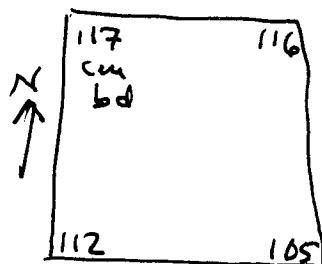
This morning I took the final measurements for EU A Lot #1. We are continuing with Lot #2 EUA since we are still recovering ceramics. More tumbler will be removed as well.



Contents: see bag!

We removed all tumbler and

### Lot #3 EUA



Contents - sterile

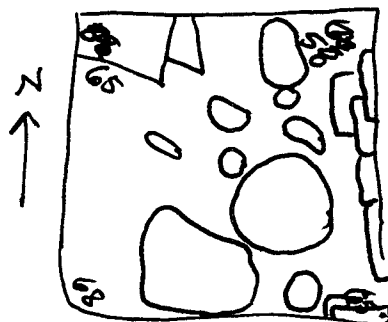
This lot was an investigation of the yellow/orange/brown clay

Contents Lot #4  
EU B

ceramica  
obsidiana

to be

Lot #4 Removed tumbler down to soil color change.



Am starting new lot. There is a lot of flatish although irregularly matched the rocks/tumbler in next wall (E).

Doesn't quite look like a wall but there has been a lot of root activity.

We are cutting in at level of next soil change which will be lot #5.

24 June 2008

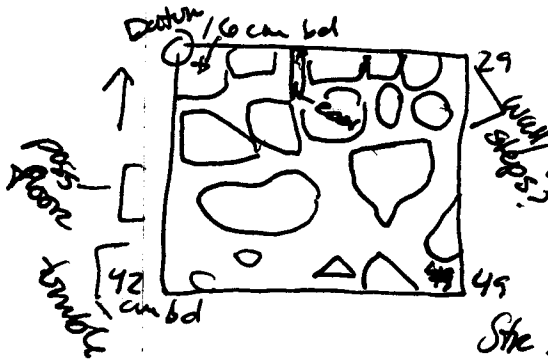
2008-17-16

Subop 20

Took photo!

Contents: 14 ceramica  
1 obsidiana  
2 chest

Lot #1



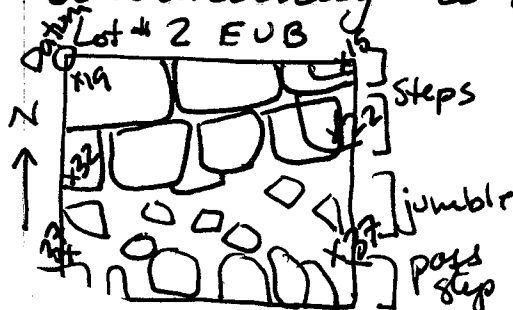
Lot #1 was a  $\approx$  20-30 cm lot

with the purpose of exposing architecture on the front side of

Str. 9 in order to better understand its purpose & placement w/in the group. It appears as though a possible cobble floor has been uncovered as well as two/one possible step. There is a lot of root action which may have affected the construction.

We are now starting Lot #2 in EUB to see if that is able to clarify the step vs. fill vs. tumble jumble. There are several large roots in EUB. Luckily they run to a dead tree.

We uncovered 2 beautiful flat stone steps! Am still up in the air as to whether the jumble/possible lines across the N. side of EUB are steps, fill, or tumble. Am cleaning up units for a photo. It looks like 1<sup>st</sup> step continues  $\downarrow$  into the jumble which would be something to investigate.



Contents: 4 ceramica  
1 - bijareque  
2 obsidiana

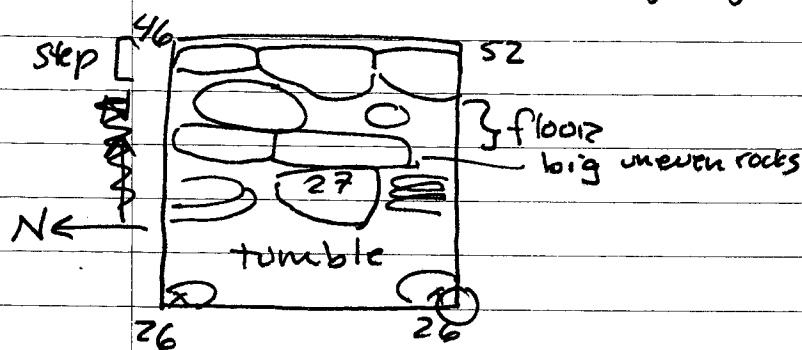


25 June 2008

2008-17-17

## Subop 17

Today we started Lot #6 in EU C<sub>1</sub> in order to better search for the next terrace/step on Str 10. So far we may have found another wall/step possibility.



Contents: 1 obsidian  
Took photo.

We are continuing to remove tumble as part of lot #7 in EUC. We removed definitely fallen rocks behind the step-like rock, and several beside ~~it~~ it. A large rock (27 <sup>below the</sup> bed - see above) one of the rect. uneven rocks is huge & goes almost under the 27 cm bed rock. It is oddly slanted back, but is worth attempting to investigate as a step. The ~~step~~ Marcello said the step & floor is most likely an apron floor on which the stl sat ∴ we are continuing to remove tumble starting in EU A & working west to find (hopefully) other instances of preserved architecture. We are not finding a lot of artifacts in this tumble/fill. They are taking out some rather large rocks, however. We are continuing to remove rocks & I am a bit more confident

24 June 2008

2008-17-18

Subop 18

EUB

We are continuing w/ Lot #5 in search of the basal wall. They are digging through dense yellowish brown clay underneath and the rocks I asked them to remove and are finding quite a bit of ceramics.

They are cutting in at the strat change.

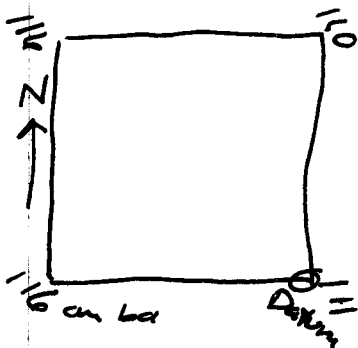
They will leave the rocks that are wall like & will continue in the next EU to see if it is actually a wall or not.

Contents: 60 ceramics  
1 peridermal



25 June 2008

Lot #6 is the yellow brown clay layer below the ~~the~~ rocks taken down to the same level as EVA.



Contents: 38 ceramics  
5 obsidian  
2 chert  
1 quartz

Am starting Lot #7 in EUC to further investigate the possible wall.

Am also starting Lot #8 by removing some of the flat stones in front of the possible wall to look for another course.

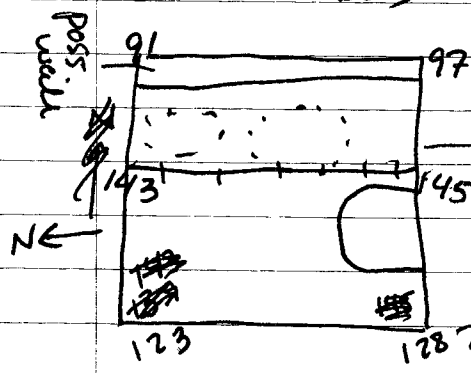
25 June 2008

2008-17-19

## Subop 18

Lot #8A took out several rocks that were sitting in front of the pig possible wall rocks. ~~It looks as tho~~ They leveled off the floor of the EU with that of EUA.

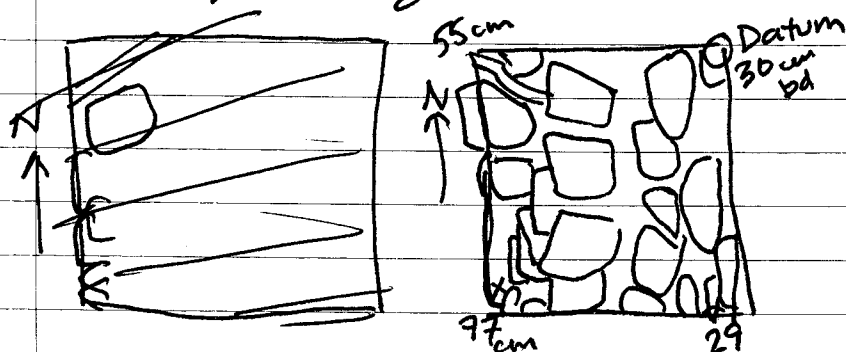
Lot #8 EUB



Contents: 9 ceramics

Soil changes to gray-brn <sup>from yellow brn</sup> at N (123cm bd) & E (128cm bd) it then changes back to a yellow brown, at the base level.

Lot #7 EUC - we are continuing to clean down and expose tumble & possible wall rocks. It looks as though part of the wall may have fallen or been pushed out by a <sup>tree</sup> root. We will have to remove some of it to be sure. Will take photo first.

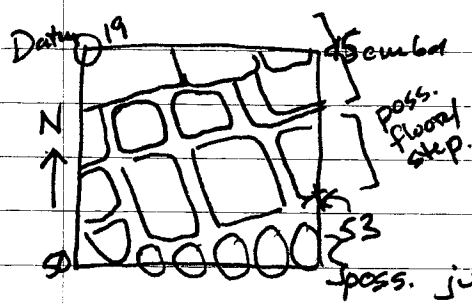


25 June 2008

2008-17-20

## Subop 20

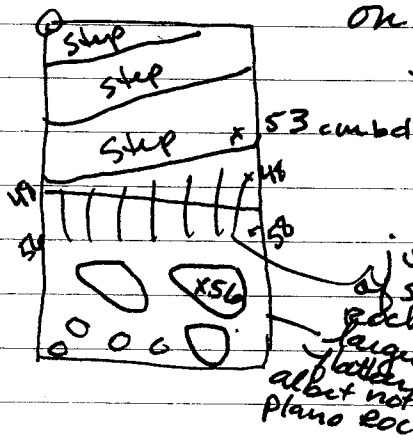
This morning we started Lot #3 in EUB in order to remove the jumble of rocks in front of the first step to see how deep it is & if it interacts w/ the possible floor in EU A. We uncovered what looks like another step.



Contents: 1 bajareque  
1 ceramica

We are now starting Lot #4 in EU A+B in order to remove the possible-although jumbled-wall/steps, in order to go down in front of the newly discovered wall/step in order to make sure that it is actually a step & not part of a floor. Removing the "steps"

Lot #4 revealed more small, irregular rocks on about the same level as the possible floor. ~~Rem~~



Contents: 1 bajareque  
1 chert

25 June 2008

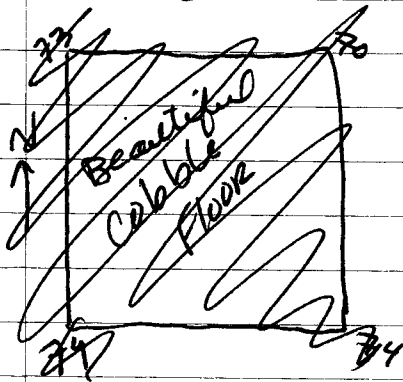
2008-17-21

Subop  
17

about their removal since they removed a rock @ the floor level & uncovered several large pieces of ceramic & a piece of bone.

EUC

I'll start them as a new lot, since they were associated w/ the floor. They will be lot #8. If they find more ceramics @ ground level they will include them in lot #8



26 June 2008

We are continuing to remove tumble in EUC as part of lot #7. Will need to add the artifact recovered today to the lot #7 artifacts from yesterday. They are removing huge fill rocks - not all nice flat huge ones either. We are going to continue removing things through this lot & then most likely stop, since we are just cutting through fill. The ceramics coming out today seem to be coming from above ~~around~~ a fill layer of very large irregular rocks.

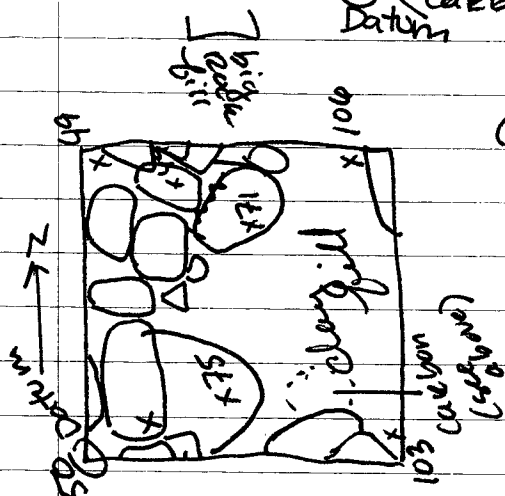
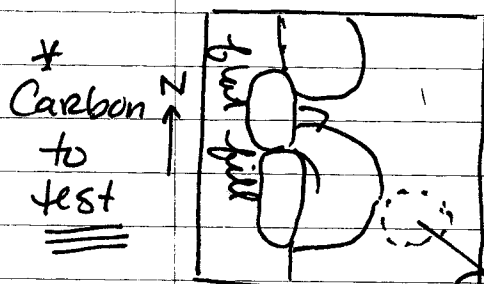
26 June 2008

2008-17-22

Subop. 17

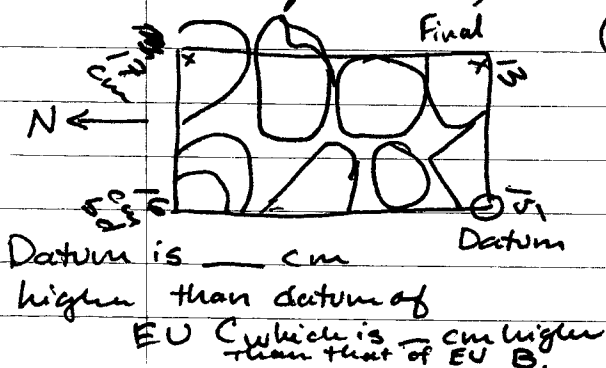
We are continuing to remove fill from Lot#7 EUC. May have hit a flat fill layer on top of the large irregular rocks. It is a similar construction

Found carbon at 100cm bd in the SE part of EUC close to the level of the clay fill/floor. - under/ before the start of the big rocks. Were also a decent amount of ceramics in the area.

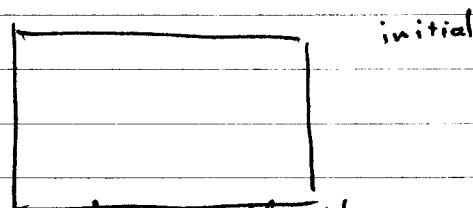


Contents: carbon  
46 ceramics  
3 obsidiana  
2 peridernal

Lot#9 We started another 1/2 EU west of EUC  $\therefore$  known as EUD. It revealed a layer of flat laid fill. So we are going to stop here, I think.



Contents:  
None



I think we found the top fill layer it is about 40-50cm higher than the layer on the other side.

26 June 2008

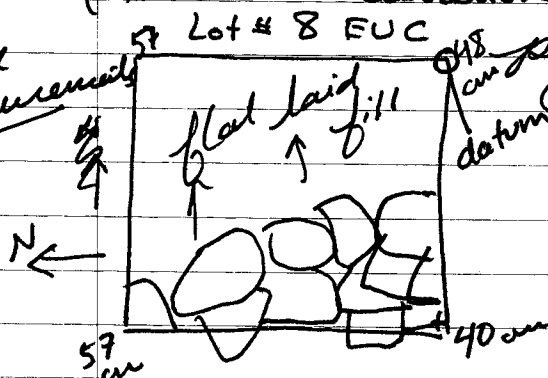
2008-17-23

## Subop 18

We are starting Lot # <sup>89</sup> in EU C and are removing some of the tumble on top of the possible wall in order to look for a nicer platform surface.

(Get initial elevations!) Uncovered a <sup>flat</sup> fill layer behind the height of the possible wall.

Need measurements

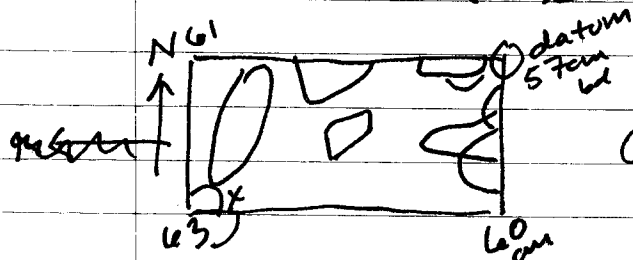


We are starting EU D Lot # 9 a .5 x 1 meter EU - to avoid coffee but hopefully follow the possible tumbled wall a bit more - to see if it is a wall.

OK. They took out the tumbled wall!

I told them we were attempting to follow it, I come back later & it's gone. I think that there is still enough to give us some idea but still! We went down to

the top of the yellow-brown layer.



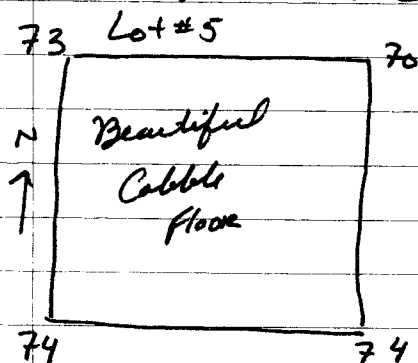
Contents: ceramica  
obsidiana

25 June 2008

2008-17-24

Subop 20 Am continuing with lot #5 in EU A & B

We are removing the small rocks that were under the possible "step" in order to find the base of the 1<sup>st</sup> step & to help determine if it is a floor/surface or not. The actual 1<sup>st</sup> step is 2 courses high and appears to be sitting on a cobble floor we are going to cut down through what I thought might be a floor to that level.



Contents: 5 ceramics  
4 chert  
1 toka  
3 obsidiana

26 June 2008

This morning we began EU C which is located south of EU B. It is a 1/2 EU on the W half in order to limit the amount of effort required & to avoid coffee in our ~~pro~~ pursuit of the end of the cobble surface. This will be lot # 6. On the northern side of EU C we seem to have uncovered a small north facing wall ~~and~~ are working east into the other half of the unit, so it is now a "protect the coffee" 1x1 unit. The cobble surface may or may not continue after this line of rocks. Have already exposed coffee roots - ops! May have found part of metate <sup>on</sup> 1<sup>st</sup> half.

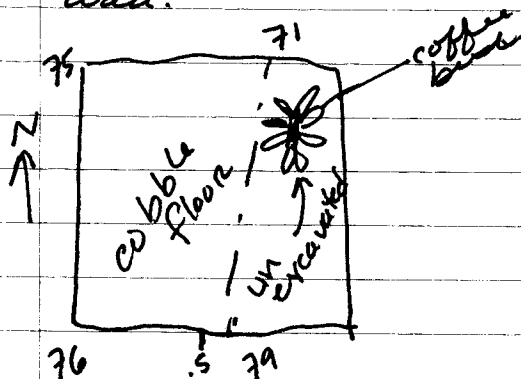


26 June 2008

2008-17-25

Subop. 20

Are continuing w/ Lot #6 in EUC,  
in order to discern whether or not  
the several flat north facing stones  
were an anomaly or an actual wined  
wall.

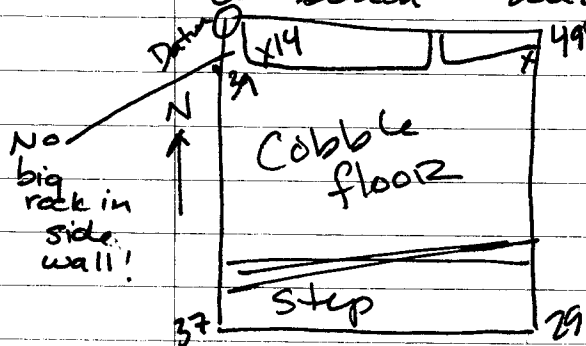


Contents:

10 ceramics

1 metate

We are starting EU D north of EU B,  
this will be lot #7 in order to follow the  
top step & look for the site's living  
surface. Looks like we found another step or  
a bench - huge flat rocks!



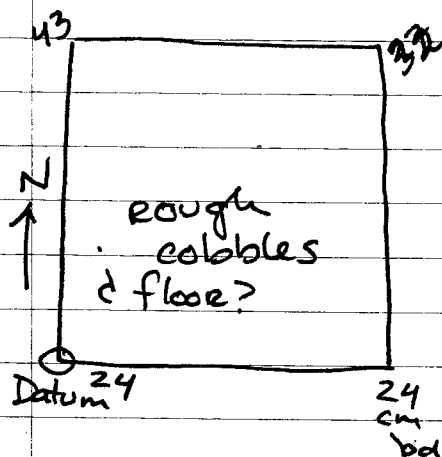
Contents: 8 ceramics  
1 peridermal

26 June 2008

2008-17-26

## Subop. 21

Lot #1  
Torge & Fili are starting Subop 21 on the North/back side of Str. 9. They are starting w/ EU A, the northernmost unit. So far they are finding more dirt than rocks.



Contents: bajareque  
peridernal  
ceramica

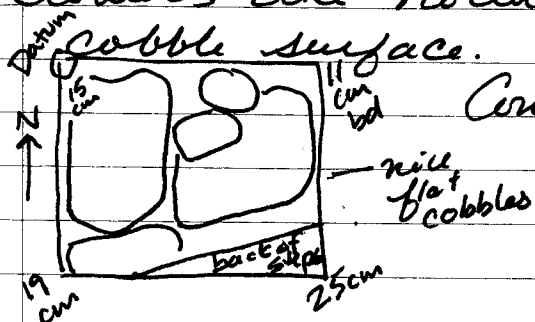
27 June 2008

2008-17-27

Am getting a late start on notes today due to mapping in the final elevations & features for Subops 17, 18 & 19 as well as the wall Stefanie just found and several new excavation units that were created. As it turns out we are basically going to do axials over both Strs 9 & 13. The units on Str 9 ~~are~~ from both Subops 20 & 21 where made to connect, albeit by adding about 15 cm to each side of the unit. The "axial" will not go completely over Str 13 due to coffee & the fact that ~~it~~ they is even less in line than those on Str. 10, we added two EVs to the northern side of Subop 15 which ends up about 0.5 m from the last unit of Subop 14.

### Subop. 20

This morning we started EU E lot #8, in order to follow the summit level towards the North. We found a nice cobble surface.



Contents:

4 ceramics  
1 obsidiana

We are now continuing with EU F, lot #9 in order to follow the floor level to find the back wall.



Contents: 5 ceramics

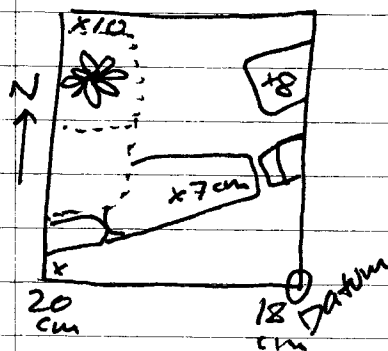
2 bajareque  
1 toba

27 June 2008

2008-17-28

## Subop. 20

We are starting EUG, Lot #10, which will follow the floor/flat laid fill until & join Subop 20 w/ Subop 21 in the north. We had to go around a coffee tree - I hope it doesn't die.



Contents: none

We are stopping this subop here & will continue work in Subop 21 to find the back of the structure.

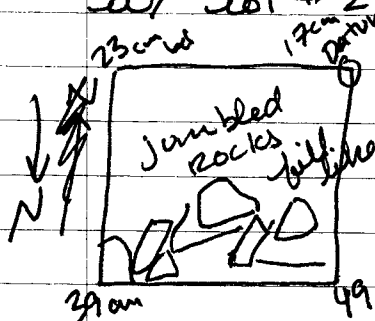
27 June 2008

2008-17-29

### Subop. 21

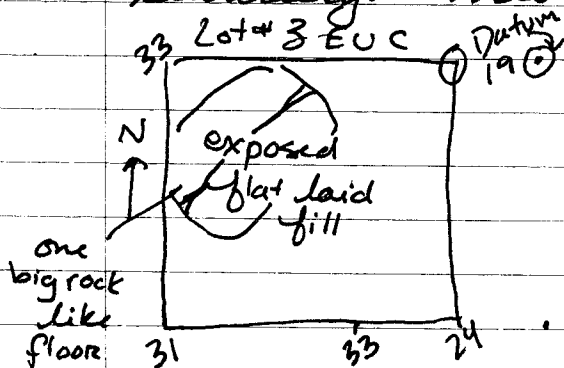
Has been expanded up a (to the south) to EUC which is the link between Subops 20 & 21. It is slightly wider (E-W) than a meter in order to allow for the connection.

Jorge & Juan Ángel started this morning w/ Lot #2 EUB. They found a possible bit of a wall & a bunch of tumble



Contents: 4 ceramics  
1 peridernal

We then continued up into <sup>the</sup> EUC in order to attempt to find the nice cobble summit surface that was found on the southern side of the building. This will be Lot #3 EUC.



Contents: 1 ceramics

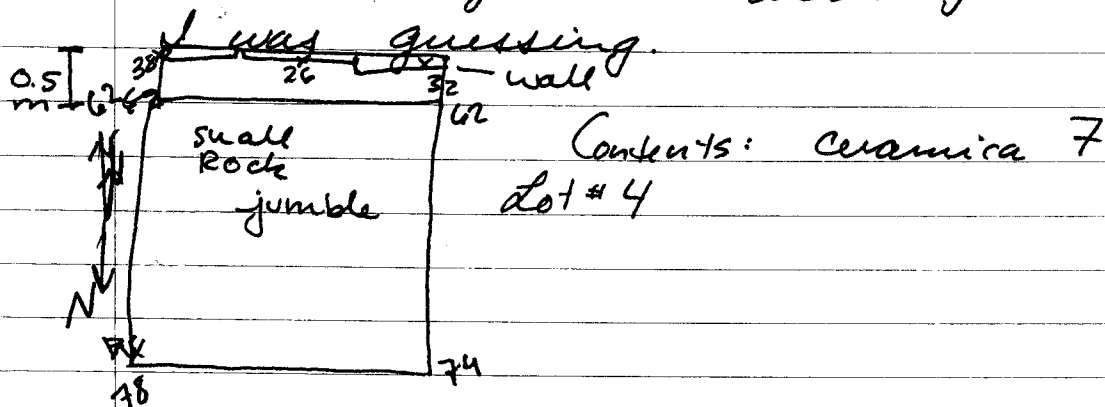
27 June 2008

2008-17-30

### Subop. 21

Today is rather yucky. It has been drizzling on & off all day, so everything is slick & we are cramped under toldos.

We are continuing work in Subop 21. <sup>Lot # 4</sup> By returning to EUs A & B, and removing some of the small jumbled/tumbled rocks. About 20 cm down we hit a yellow brown clay layer, which contains many small rocks/stones. We are clearing back along this yellow-brown layer to hopefully expose our best bet at a fallen back wall. If Juan Angel doesn't remove the wall when I'm not looking, it is almost like we are cutting into the fill body of another building, but I don't see any sign of another STR anywhere. We are now cutting back further into EUB (moving South). I removed some tumble & we are now in search of the wall. We found the wall! 'Yeah!' It actually was where I was guessing.

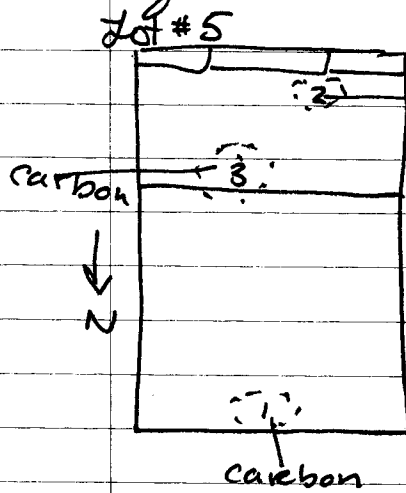


27 June 2008

2008-17-31

Subop. 21

We are continuing down in EU A & B <sup>Lot #5</sup> in order to uncover the base of the wall. We are currently digging through the yellow brown clay filled w/ Rutabla like rocks to find the base of the wall. So far we have found a whopping 2 pieces of ceramic ~~but~~ a nice obsidian flake/blade. Since we are currently working in EU A, I'm guessing that we are near the base level of the wall, since the trash has started. There seem to be fewer rocks as well. We got two



instances of carbon & carbon are now finding a lot more (large) pieces of ceramic. We have found several bits of carbon.

Sample 3 is probably the best to be tested, but like the other samples touched the plastic dustpan.

28 June 2008

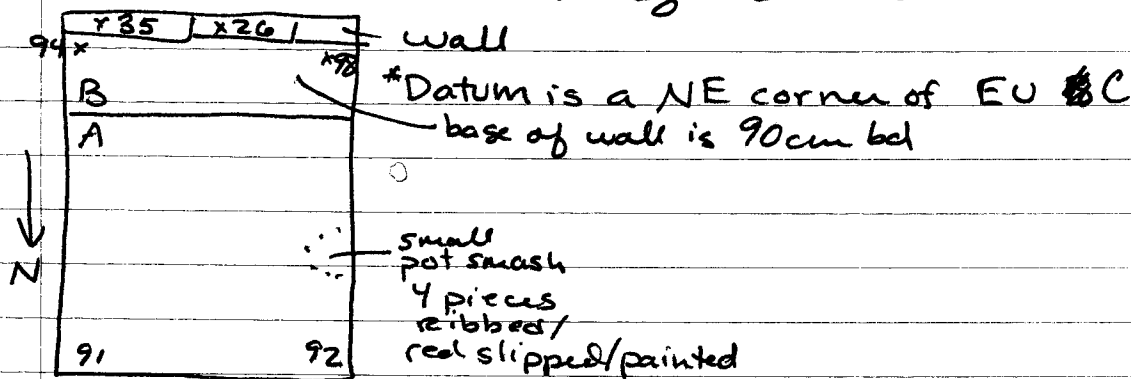
We are continuing down in front of the wall to find the base (Lot #5 EU A & B) we found Carbon Sample 3 today and are still recovering a lot of ceramic.

28 June 2008

2008-17-32

## Subop. 21

Continuing with Lot #5 in EUs A & B.  
We are still finding a lot of ceramic  
and some more carbon. We have  
reached the base of the wall.



Contents: 180 ceramics  
14 bajareque  
3 pedernal  
7 obsidiana



27 June 2008

2008-17-33

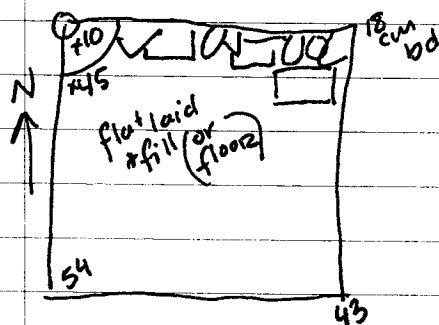
## Subop. 22

We are starting Subop 22 this afternoon. Subop. 22 is a  $2 \times 1$  (E) meter test excavation on the South (patio facing) side of Str. 8. The purpose of this excavation is to determine the direction Str 8 faces and to gain a better understanding of the group as a whole through the exposure of architecture & collection of a ceramic assemblage.

Lot #1 is located in EUA, the southernmost EU.

28 June 2008

We are continuing w/ Lot #1. They removed some tumble and have found a lot of ceramic. I may have started too high up the str but will move up there to the next EU (north) to see if that helps explain the tumble removed from EUA.



Contents: 1 bone

1 metate

95 ceramics

3 peridermal

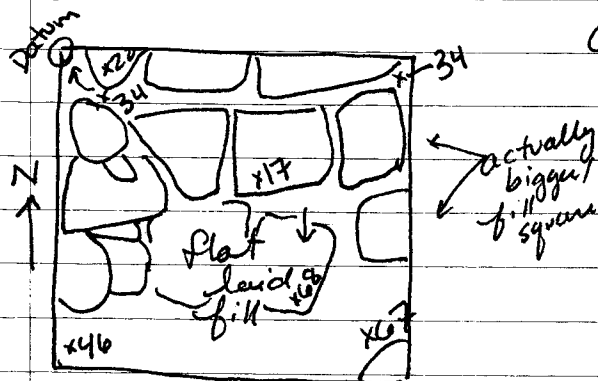
28 bajareque

28 June 2008

2008-17-34

## Subop. 22

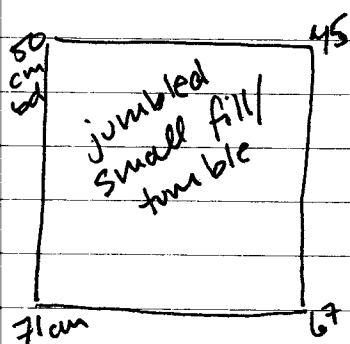
We are starting Lot # 2 EUB with the purpose of exposing some of the architecture in order to explain what was found in EU A.



Contents:

1 mano  
ceramica  
peridermal  
bajareque  
obsidiana

I just created EUC, south of EU A in an attempt to uncover at least some architecture that isn't flat laid fill. This will be lot # 3 EUC.



\* Datum @ NW EU A

30 ~~July~~ June 2008

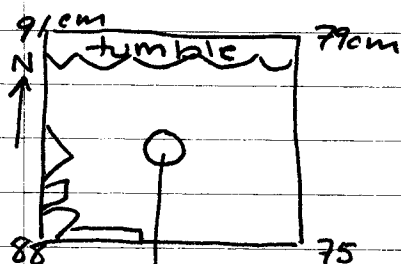
2008-17-35

## Subop. 22

We are continuing with Lot #4 EUC in an attempt to uncover a patio floor or similar structure under the small tumbled rocks that might allow us to make a determination as to the size &  $\angle$  of the structure. It has been raining on & off so they built a champa over the pit. Will go back & further investigate the possible wall in EUB/A.

Lot #4

Contents:



116cm - test probe to  
look for soil → stays yellow ben

\*Datum @ NW of EUA

Lot #5 EU A involves the investigation of a possible step/terrace in the S. part of the EV. Tumble was removed & we are clearing back to the possible wall.

30 June 2008

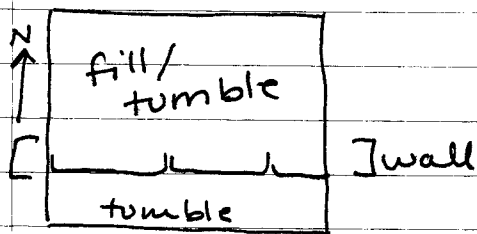
2008-17-36

### Subop. 23

This morning Jorge & Seraphim began work on Subop 23 - a  $2 \times 1$  m pit on the northern side of Str 8.

The purpose is to determine the orientation of Str 8.

Lot #1 is a 10-20 cm lot to expose the Rocks/tumble.



Contents:

They found a nice wall - this may be the back of the str after all. In order to continue following the wall down, we opened up another 0.5 EU to the north, so EUA is now  $1.5 \times 1$  m. This will be considered part of the same lot.

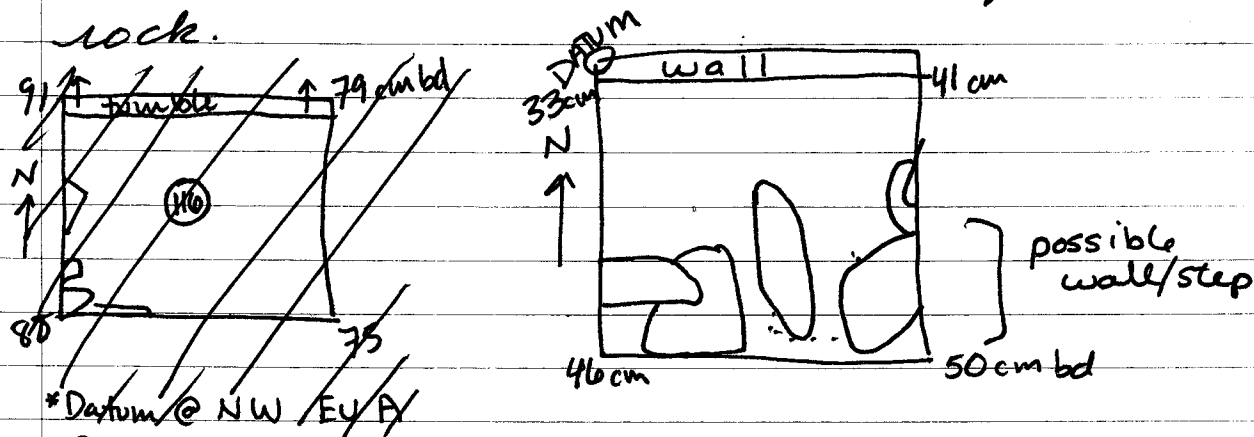
30 June 2008

2008-17-37

## Subop. 24

This morning Chico (Francisco) & Juan Ángel began work on a 1x1 ba to expose the architecture on Str 12 in Don Ernesto's milpa. Don Ernesto was out weeding when we came to set the pit up. Since both corn & beans have been planted in this part of his field, we are looking at a loss of about 30 bean plants & 2-3 corn plants. I need to find out how much he wants for each. I chose to set the pit up to test the eastern wall stub since it seems better preserved.

Lot #1 will be a 10-20 cm lot to expose the rock.



\*Datum @ NW EU/A  
Contents:

Since we uncovered a possible second wall in the southern half of the EU & have not yet found the base of the wall we are going to continue down, after removing the tumbled part of the wall both in front & on top of the wall. This will be Lot #2

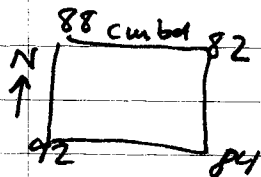
1 July 2008

2008-17-38

Subop. 22

Lot #4 EUC (measurement for work from yesterday)

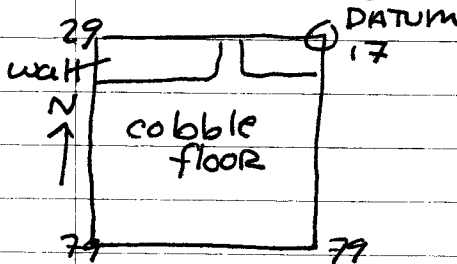
✓ Datum at NE in EUA



Contents:

Lot #5 EUA

Am removing tumble in front of the possible wall in order to assess its possibilities / find the base. It is a 2 course high wall. Lots of big bajareque chunks. (3-4")



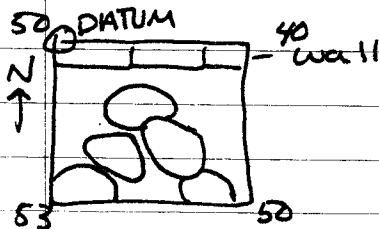
Contents:

Subop. 23

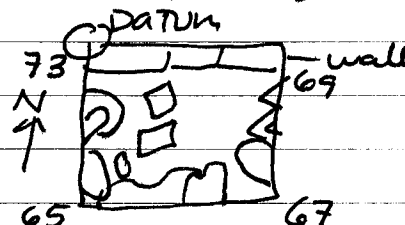
Lot #1 am removing tumble in order to follow the wall to its base. Lots of ceramics.

Subop. 24

Lot #2



Lot #3 am removing big rock in order to find the base of the wall. Rocks are tumble & not part of another construction.



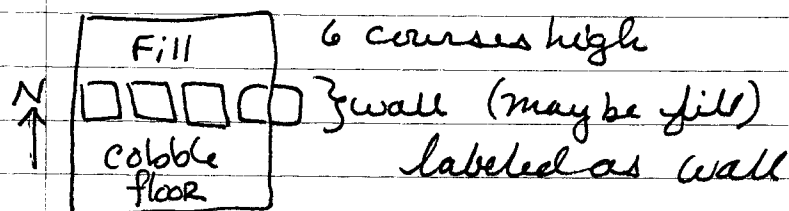
2 July 2008

2008-17-39

SubOp. 22

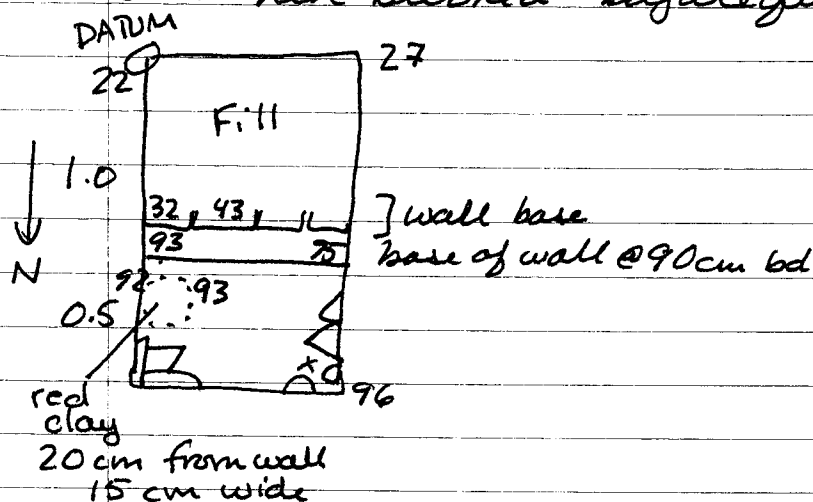
Lot #6 EUB

Removed tumble/fill from NW corner found wall & associated cobble floor/terrace.



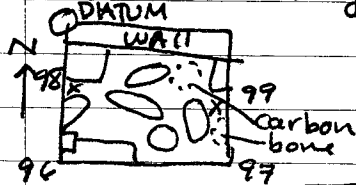
SubOp. 23

Lot #1 - Am continuing down to base of wall @ base level found a clump of red clay - almost like non-burned bajareque.

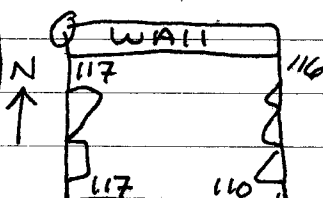


Subop. 24

Lot #4 - removing tumble & continuing to wall base



Lot #5 found human finger bone



Contents: ceramics  
bone  
carbon (?)

2 July 2008

2008-1740

Final Notes

Subop 17

Apron floor  $165^\circ$  schist  
 $32 \times 46$   $10 \times 7$   $23 \times 17 \times 10$

Fill  $165^\circ$   $30 \times 10 \times 29$   $20 \times 23 \times 6$   $9 \times 13 \times 6$  97% schist  
3% river cobble

Subop. 22

Cobble surface (south)  $0.19 \times 1m$  schist  
 $30 \times 19$   $12 \times 13$

Wall 1/terrace  $82^\circ$  2 courses  
 $41 \times 22 \times 15$   $20 \times 32$   $17 \times 46$  schist

Cobble surface 2 (terrace)  $82^\circ$  schist  
 $28 \times 28$   $8 \times 13$   $20 \times 17$

Wall 2 6 courses schist  $83^\circ$   
 $36 \times 32 \times 11$   $10 \times 8$   $22 \times 7$

Fill schist  
 $34 \times 12 \times 10$   $23 \times 26 \times 9$   $14 \times 11 \times 13$

Subop 23

Wall 5 courses  $85^\circ$  schist  
 $36 \times 15$   $7 \times 3$   $20 \times 20 \times 9$



2008 - 17 - 41

2 July 2008  
Subop 18,

poss. tumbled wall

$24 \times 9$     $30 \times 7$     $27 \times 7$    bottom 134 cm bd  
 $3^\circ$    schist   3 courses  
(? 345°)

poss. wall    $350^\circ$    schist   6 courses  
~~bottom 134 cm bd~~   top 38 cm   bottom 98 cm bd  
 $45 \times 18$     $12 \times 7$     $12 \times 15 \times 6$

fill   schist  
 $18 \times 22 \times 25$    top 50 cm bd

Subop 24,

Wall

102 base of wall

0 top of wall

$103^\circ$

9 courses (10 if count ones that slid on top)

$16 \times 43$     $16 \times 5$     $23 \times 12$

2 July 2008  
Final Notes

2008-17-42

Sub op. 221

# C20

Subop 17

Datum is  $\downarrow$   
 SE EUB

Unit	Length	width	height	Align.	Courses	Top	Bot
① <del>Block</del> wall	1m exposed	.31m	0.1m	180°	1	.53 cm	.61
② fill	1m	0.75m	0.14m	-	1-2	.38	.63

Unit	largest	smallest	Modal size	form	material
① wall	26 x 17 x 8	14 x 5 x 8	21 x 11 x 6	angular & rounded	Schist
② fill	21 x 20 x 7	12 x 12 x 8	13 x 7 x 4	12 angular	Schist

## Subop 22

N 41.06  
E -181.27  
Z 997.69

N 39.85  
E -181.36  
Z 997.3

N 39.01  
E -181.34  
Z 997.09

N 40.99  
E -180.23  
Z 997.69

N 39.93  
E -180.3  
Z 997.35

N 38.94  
E -180.2  
Z 997.08

N 38.01  
E -181.34  
Z 997.09

↑  
to Add

N 37.94  
E -180.2  
Z 997.06

extrapolated  
(true)

add to  
notes!

## Subop 23

N ↑

N 47.66  
E -182.58  
Z 997.05

N 46.33  
E -182.69  
Z 997.43

N 46.18  
E -181.61  
Z 997.55

A

4

## Subop 24

N ↑

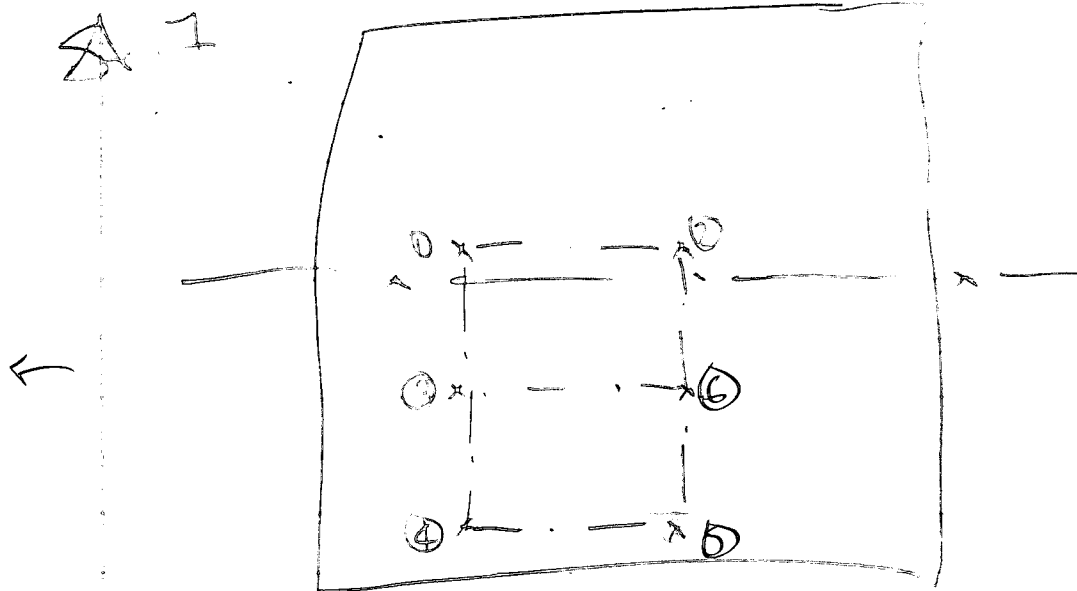
N 71.68  
E -143.72  
Z 998.02

N 70.27  
E -143.13  
Z 997.61

N 71.35  
E -142.72  
Z 998.07

N 70.63  
E -144.07  
Z 997.61

A



① N 1.28      2.14  
E -187.87   -187.47  
Z 997.02    996.99

② N 2.14      1.28  
E -187.47   -187.87  
Z 996.99    997.02

③ N 2.49  
E -188.44  
Z 996.79

④ N 1.56  
E -188.81  
Z 996.82

⑤ N 2.86  
E -189.38  
Z 996.70

⑥ N 1.95  
E -189.73  
Z 996.71

Handwritten calculations:

$$\begin{array}{r} 997.02 \\ - 996.39 \\ \hline 0.63 \end{array}$$

$$\begin{array}{r} 997.02 \\ - 996.39 \\ \hline 0.63 \end{array}$$

$$\begin{array}{r} 997.02 \\ - 996.39 \\ \hline 0.63 \end{array}$$

$$\begin{array}{r} 997.02 \\ - 996.39 \\ \hline 0.63 \end{array}$$