

---

Four Valleys Archive

Anthropology

---

2009

## EPV 045 Rhudy Field Notes 2009

Chelsey Rhudy

Follow this and additional works at: <https://digital.kenyon.edu/honduras>



Part of the Archaeological Anthropology Commons

---

### Recommended Citation

Rhudy, Chelsey, "EPV 045 Rhudy Field Notes 2009" (2009). *Four Valleys Archive*. Paper 96973.  
<https://digital.kenyon.edu/honduras/96973>

This Lot Card is brought to you for free and open access by the Anthropology at Digital Kenyon: Research, Scholarship, and Creative Exchange. It has been accepted for inclusion in Four Valleys Archive by an authorized administrator of Digital Kenyon: Research, Scholarship, and Creative Exchange. For more information, please contact [noltj@kenyon.edu](mailto:noltj@kenyon.edu).

19 JUNE 2009

2009-45-01

OUR DAY BEGAN AT 6:00 AM TO THE SOUNDS OF "GOOD MORNING" BY GENE KELLY. AFTER AN EVENTFUL NIGHT OF RAIN, ATTACKING BUGS, AND PEOPLE SHOOTING OFF THEIR GUNS, WE ATE A HEARTY BREAKFAST OF PANCAKES AND WATERMELON. ONCE FINISHED, WE DROVE TO THE LAB HOUSE WHERE OUR KITS WERE GIVEN TO US AND INSTRUCTIONS DISHED OUT CONCERNING FORMS, NOTE-TAKING, AND DATA ENTRY.

BECAUSE OUR FIELD MANUELS WERE NOT READY, DR. BELL DROVE US OUT TO LOS NARANJITOS AND EL CAPITAL FOR A TOUR. TRUDGING THROUGH COFFEE FIELDS AND FARM LAND OF CORN AND BEANS, WE MET MARY AND STEPHANIE WHO PRESENTED THEIR SITES TO US. BOTH HAD TRENCHES ALREADY DUG AND WERE FINISHING CLEARING OUT EXCESS DIRT.

BELL TOOK US THROUGH THE JUNGLE WHICH WE SPORTED A SERIES OF SONGS THAT INCLUDED "IN THE JUNGLE" AND "THIS IS THE SONG THAT NEVER ENDS". ARRIVING AT EL CAPITAL, BELL EXPLAINED ABOUT THE SITE, POINTING OUT THE MAIN STRUCTURE (B). WE THEN BEGAN TO PRELIMINARY SKETCH THE SITE INCLUDING THE MAIN PLAZA AND ALL SURROUNDING STRUCTURES. ADJACENT TO STR. 8, WAS STR. 2 WHERE I FELL AND BECAME COVERED IN MUD TRYING TO CLIMB A TOP THE HILL. ONCE ON TOP THE STR., THE LAYOUT OF THE PLAZA IS EVIDENT. ALL STR SURROUNDING SEEMED TO ENCOMPASS STR 8. WITH A THEORIZED PYRAMID TO ITS RIGHT.

FOLLOWING BACK TO THE CAR THROUGH PALM TREES, TALL GRASS, AND BARB WIRE FENCES, WE DROVE TO EL PARAISO TO EXAMINE THE STR. HERE. THEORIZED TO BE THE REPRESENTATIVE OF COPAN'S HOUSE, BELL RECOUNTED THE STORY OF THE IDIOTIC MAYOR WHO PRACTICALLY DESTROYED IT BY "SHAVING" OFF THE SIDES. THE VIEW WAS BREATHTAKING; ABLE TO SEE FOR MILES WITH ROLLING HILLS AND LUSH MOUNTAINS. MOUSSA WAS THE FIRST TO FALL HERE TRYING TO CLIMB DOWN FROM THE STRUCTURE.

FROM EL PARAISO, WE DROVE TO OUR SITE, SITE 36 OR CJSM AND SITE 38. WE EXPLORED BOTH SITES AND SPLIT INTO GROUPS TO MAP THE AREAS. JENICA, MELISSA, STEPHANIE, AND I MAPPED

2009-45-02

S-036; RYAN, CATALINA, AND MIKE TOOK S-038. AFTER AN INITIAL TRY TO FIND ALL SURROUNDING STRUCTURES, DR BELL TOOK PITY ON US AND GAVE US A MAP. ASSIGNING STRUCTURES TO EXCAVATE, I WAS ASSIGNED STR. 1, THE "BIG ONE".

AFTER LUNCH, HALF THE GROUP STAYED AT HOME WHILE RYAN, JENKA, MELISSA, AND I RETURNED TO THE SITE TO USE THE EDM TO MAP PITS. MELISSA DECIDED TO TEST HER KNOWLEDGE OF SETTING UP THE EDM WHICH TOOK LONGER THAN EXPECTED. ONCE SET UP, THE NEXT THREE AND A HALF HOURS WERE SPENT MAPPING POINTS FOR EACH OF OUR SITES. THE PROBLEM LIE WITH FIGURING OUT TRUE NORTH AND MEASURING APPROPRIATELY TO COME TO A WHOLE NUMBER WITH COORDINATES. WE WERE CONSTANTLY HAVING TO MOVE SINGLE-DIGIT CENTIMETERS IN A CARDINAL DIRECTION WHICH TOOK FOREVER.

ONCE WE FINALLY FINISHED MAPPING IN THE LAST OF THE PRESENT PEOPLE'S POINTS, THE DAY ENDED ON A GOOD NOTE OF A HOT SHOWER, PASTALITOS FOR DINNER, AND AN AWESOME RAIN SHOWER THAT PUTS YOU INTO A NICE DEEP SLEEP.

20 JUNE 2009

2009-45-03

AS BEFORE, THE DAY BEGINS AFTER A NIGHT OF HARDCORE RAW. WE WERE ALL STILL HALF ASLEEP (ME ESPECIALLY), BUT MANAGED TO GATHER TOOLS, EAT BREAKFAST, AND HEAD OUT TO THE FIELD.

ONCE WE ARRIVED, BELL ASSIGNED WORKERS TO THOSE WHO HAD ALREADY MAPPED OUT THEIR LOTS. MY WORKER'S NAME WAS ELVIN.

GIVING US A RUN-DOWN ON HOW TO DIG AND THE PROCESSES INVOLVED, WE EACH SPLIT UP TO COMMENCE OUR INDIVIDUAL STRUCTURES.

STRINGING MY LOT, ELVIN AND I LEVELED IT AND BEGAN DIGGING. WE PICKED A SIDE TO EACH BEGIN WORK ON AND SLOWLY DUG IN THE 90° ANGLE TO KEEP THE LOT LEVEL AT APPROX. FIVE CENTIMETERS, ELVIN FOUND 1 PIECE OF CHERT THAT APPEARED CYDRICAL.

DUE TO THE LANGUAGE BARRIER BETWEEN US, ALL ARTIFACTS AND ROCKS WERE CLARIFIED THROUGH ELVIN. WE TRIED TO ESTABLISH THE ENGLISH WORDS FOR THE SPANISH VERSION, BUT ULTIMATELY FAILED.

BECAUSE BELL DID NOT TELL US THAT WE HAD AUTHORITY OVER OUR WORKERS, I FOUND A PIECE OF CHARCOAL AT APPROX. FIFTEEN CENTIMETERS. CLARIFYING IT WITH ELVIN, HE CRUMBLED THE PIECE AS HE AGREED. THE PIECE, AS I THOUGHT, SHOULD HAVE BEEN PRESERVED, BUT WAS ULTIMATELY LOST IN TRANSLATION.

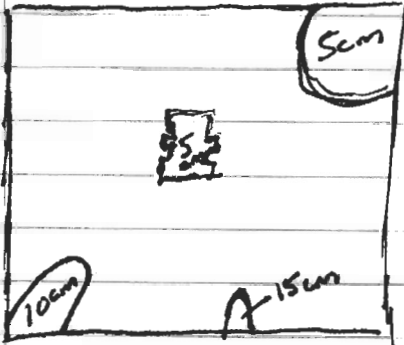
FROM ROUGHLY FIVE CENTIMETERS DOWN TO THE FINAL THIRTY, WE FOUND HUNDREDS OF CARBON PIECES THAT APPEARED AS BLACK UNWORKED STONE THAT RESSEMBLED BEEF JERKY. BECAUSE THEY WERE DISCOVERED AS SUCH AT A LOW DEPTH, THEY WERE NOT SAVED DUE TO THE PRACTICE OF SLASH AND BURN FARMING TECHNIQUES.

APPROX. TWENTY-THREE CENTIMETERS, ELVIN FOUND TWO POTTERY LIPS IN THE SOUTHWEST

2009-45-04

CORNER OF THE LOT. SMALLER PIECES OF CERAMIC WERE DISCOVERED THROUGHOUT THE LOT FROM 10-15 CENTIMETERS DOWN.

SEVERAL LARGE STONES/ROCKS APPEARED AT 5-15 CENTIMETERS THAT WERE REMOVED AS THEY WERE ESTABLISHED AS TUMBLE.



THROUGHOUT THE LOTS, LARGE CHUNKS OF UNWORKED CHERT WERE DISCOVERED, AS SMALL AS ONE CENTIMETERS WITH THE CYNDRICAL PIECE, TO AS LARGE AS TEN CENTIMETERS, ALL PIECES WERE COLLECTED AND BAGGED.

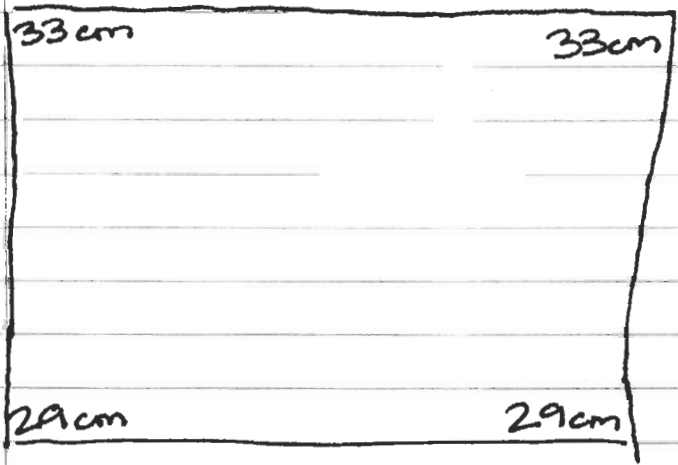
THE FIRST DAY OF DIGGING PROVED INFORMATIVE AS I GREN SO INTENTIVE ON MY LOT. NOT DRINKING WATER FOR THE FIRST FOUR HOURS WE WLTRE THERE, I BECAME HEAT EXHAUSTED. VERY NAUSIOUS (I KNOW NOT SPELLED RIGHT) AND HAVING A HORRIBLE HEAD-ACHE WITH MASSIVE DIZZINESS, I LEARNED THAT YOU DRINK WATER EVEN IF YOU'RE NOT THIRSTY. MELISSA IS NOW MY ESTABLISHED PROTECTOR AS SHE SAT WITH ME UNDER AN UMBRELLA OUT OF THE SUN.

THE COWS ARE SMELLY AND POOP EVERYWHERE. THERE IS ONE, MACHISMO AS WE'VE NAMED HIM, WHO IS ALWAYS DEPRESSED AND MOOS CONSTANTLY. ALL-IN-ALL, THE DAY PROUD SUCCESSFUL AS WE ALL FOUND ARTIFACTS AND ENDED UP GETTING SOAKED FROM THE MASSIVE RAIN STORM THAT SET ON SUDDENLY.

\* WE FINISHED PIT 'A' OF MY STRUCTURE AT ROUGHLY 30 CENTIMETERS AS I HAD A SOIL CHANGE. I STRUNG 'B', BUT DID NOT FINISH AS I HAD

SET UP JENICIA'S TRENCH AND STARTED MELISSA'S  
WHEN THE RAIN SET IN.

FINAL MEASUREMENTS



LOT 01 N ↑

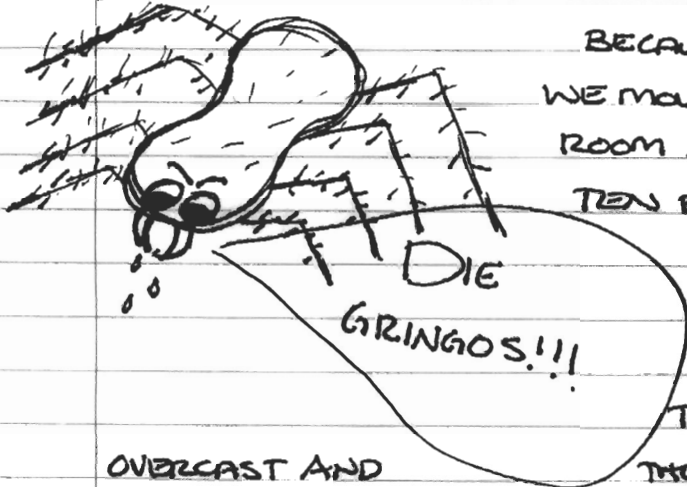
21 JUNE 2009

2009-45-06

THE DAY SHOULD HAVE BEGAN WITH A QUITE WAKE-UP AT 6:00AM, BUT NOTHING IS EVER AS SIMPLE AS IT SEEMS. ESPECIALLY IN HONDURAS. I AWOKE THIS MORNING TO THE SOUNDS OF MIKE GASPING AND WARNING ME NOT TO WAKE UP AT 2:00AM. OF COURSE, CURIOSITY KILLS THE CAT AND I OPENED MY EYES A SPIDER THE SIZE 4 COASTER NEXT TO MIKE'S HEAD PRACTICALLY TRYING TO EAT HERE.

THE SPECTACLE WE PUT ON TRYING TO KILL IT WAS ONE FOR PAP-PEER-VIEW. WHILE SCREAMING LIKE LITTLE GIRLS, MIKE ATTEMPTED TO KILL IT WITH BUG SPRAY, BUT PROVE UNSUCCESSFUL. THE SPIDER WAS FASTER THAN EXPECTED AS IT RUSHED ACROSS THE ROOM AND JUMPED INTO MY SUITCASE.

AFTER DRAGGING THE SUITCASE TO THE CENTER OF THE ROOM, WE ATTEMPTED WITH A PAIR OF TONGS TO GET HIM OUT, BUT HE CHOSE A FRONTAL ASSAULT AND RUSHED US INTO THE DINING ROOM, ESCAPING UNDER THE FRONT DOOR.



BECAUSE OF THIS EVENTFUL WAKE-UP CALL, WE MOVED OUR BEDS TO THE CENTER OF THE ROOM AND MANAGED TO FALL ASLEEP AFTER TEN PARANOID MINUTES.

THANKFULLY, NO SPIDERS BOTHERED US FOR THE REST OF THE NIGHT AND WE AWOKE TO PANCAKES AND BACON.

THE FIELD WAS NICE AS THE SKY WAS OVERCAST AND THERE WAS A BEAUTIFUL BREEZE

BECAUSE OF THE RAIN THE AFTERNOON BEFORE, WE USED THE EDM TO PLOT MELISSA'S AND STEPHANIE'S COORDINATES, MEASURING TO INSURE THE STAKES WERE IN THE RIGHT PLACE. BELL TAUGHT US HOW TO DETERMINE THE NORTH AND EAST COORDINATES WHILE SUPPLYING OUR EQUATIONS.

WE LOCKED IN ONLY ONE PIT FOR ME AS SHE WANTED TO TAKE CARE OF THE OTHER SITE FIRST AS THEY'D BE QUICKER. THE LOT "C" WAS PLACED ADJACENT TO "B" ON ITS WESTERN SIDE TO COINCIDE

2009-45-07

WITH THE MEDIAN LINE OF STR. 1.

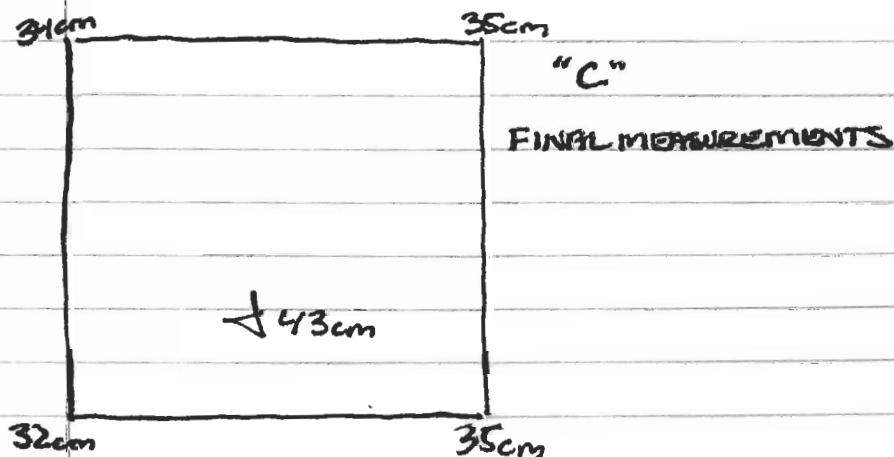
AS I HAD NO WORKER TODAY, DUE TO THE FACT THAT HE WAS HELPING TO BUILD FENCES AROUND THE SITES, I BEGAN DIGGING ALONE. GETTING A BAGS OF 0-40, REMOVING THE ROOTS PROVED TO BE THE HARDEST PART.

AT ROUGHLY 10 CENTIMETERS, A PIECE OF CHARCOAL WAS DISCOVERED IN THE SE CORNER. IT WAS WRAPPED IN TIN FOIL AND HANDLED THROUGH A TROWEL TO AVOID CONTAMINATION.

VERY FEW PIECES OF POTTERY WERE DISCOVERED AS WE GROW CLOSER TO THE STRUCTURE. A MEDIUM SIZED CERAMIC LIP WAS FOUND AT APPROX. 43 CENTIMETERS IN THE SW CORNER TOWARDS THE MIDDLE DUE TO LEVELING. SMALLER POTTERY PIECES (3) WERE FOUND SPARADICALLY 20-30 CENTIMETERS.

THREE PIECES OF CHERT WERE DISCOVERED, THE BIGGEST  $1 \times 1/2$  AT THE NW CORNER AT 23 CM.

I THOUGHT I MAY HAVE FOUND A LARGE CHUNK OF CHARCOAL AT 40 CM IN THE SW CORNER. I PRESERVED IT JUST IN CASE, BUT ELLIEN BELIEVES IT MAY JUST BE A TYPE OF ROCK HOLE THAT MASQUERADES AS CHARCOAL.





28 JUNE 2009

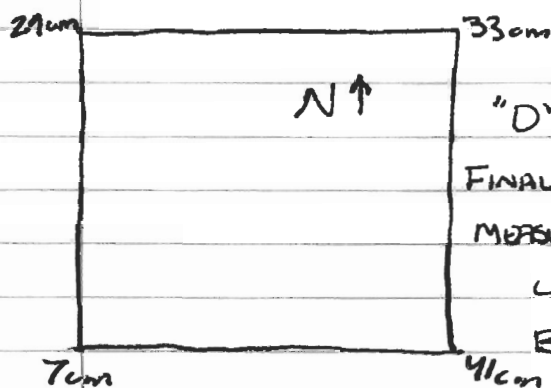
2009-45-08

OUR STORY FOR TODAY BEGINS WITH A BOILING SUN AND SLIGHT BREEZE. ONCE AGAIN I DON'T HAVE WORKERS (YAHOO!!) SO I'M BY MYSELF.

I OPENED UP LOT 4 "D" AND BEGAN DIGGING AS USUAL. THE LOT WAS FULL OF ROOTS WHICH PROVED DIFFICULT, BUT WAS OVERCOME BY THE ALL MIGHTY PICK-AX. THE ULTIMATE PROBLEM LAY IN THE FIFTEEN THOUSAND ROCKS I CONTINUOUSLY RAN INTO. I HAD TO CLEAN AROUND EVERY EDGE AND KEPT RUNNING INTO NEW ROCKS EACH TIME.

I AM SURPRISED TO GET LIONEL BACK THIS AFTERNOON TO HELP ME AS I BEGIN MY SEARCH FOR THE OUTER MOST WALL IN THE BACK OF THE STRUCTURE.

I CLEARED THE INITIAL LOT BY LUNCH TIME FINDING ONLY



TWO PIECES OF POTTERY: ONE AT 11 CM BETWEEN SW AND SE "D" CORNERS AND A MEDIUM SIZED FINAL LIP AND 30 CONTINGENTS IN MEASUREMENTS NE CORNER.

LIONEL RETURNED TO ME RIGHT BEFORE WE BROKE AS THE OWNER OF THE LAND APPEARED AND

COMPLAINED ABOUT OUR TARPS. IN HONDURAS, SQUATTERS CAN LEGALLY CLAIM LAND AS THEIR OWN DESPITE IT BEING ALREADY OWNED AFTER A CERTAIN TIME LIMIT. HE BELIEVED WE WERE "INVADING" HIM AND ULTIMATELY, AS BILL SAYS "WE PICK AND CHOOSE OUR BATTLES" AND GAVE IN. NO TARPS, NO SHADE, AND THE DEADLINE WAS MOVED UP TO NEXT TUESDAY.

BECAUSE OF THIS, WE NOW HAVE TO SPEED UP DIGGING SO LIONEL TOOK OVER AS WE REOPENED LOT "C" AND "D" TO LOOK FOR THE OUTER BACK WALL TO STR. 1. BILL WANTED ME TO TAKE IT DOWN TO LEVEL WITH LOT "A" AT APPROX 60 CM.

2009-45-09

THROUGHOUT THE 60 CENTIMETERS, VERY LITTLE WAS UNCOVERED BEYOND ROCKS.

QUARTZ: 1

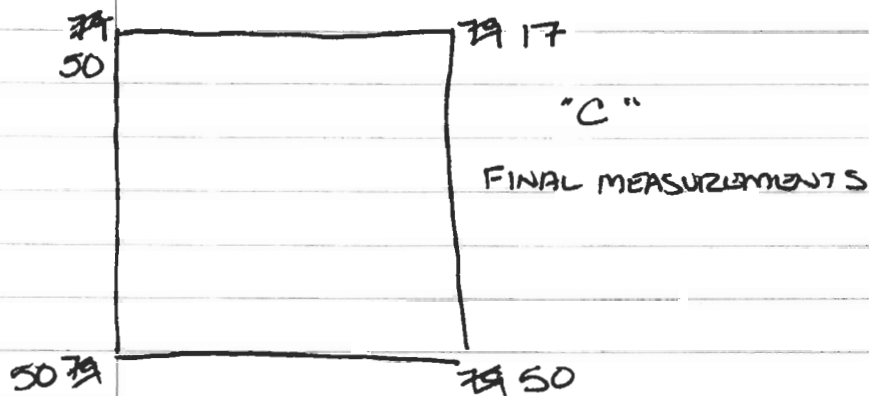
CHERT: 7

POTTERY: 16

OBSIDIAN: 3

BAJAREQUE: 8

AFTER HITTING 60 AND LEVELING WITH "A", WE BEGAN EXTENDING BACKWARDS TO FIND THE WALL. EACH ROW OF ROCK WAS REMOVED ONE-BY-ONE UNTIL WE CAME TO THE ADJOINING LOT "D" WHERE WE ENDED FOR THE DAY.

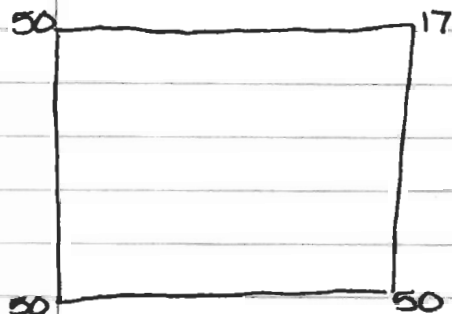


ON A PERSONAL NOTE, STEPHANIE, RYAN, MIKE, AND I HAVE NOW BEGUN TO GET SICK WITH "STOMACH PROBLEMS". = NOT FUN!!

24 JUNE 2009

2009-45-10

YEAH!! ITS SUPERVISING DAY!! BECAUSE THE DEADLINE WAS TYPED UP ON US BY THE ASSHOLE OF AN OWNER, WE NOW ARE SUPERVISING OUR DIGS TO TRY AND SPEED UP WORK. THOUGH I'M HAPPY THAT I CAN KEEP UP AND GET CAUGHT UP ON MY NOTES, THE FACT I HAVE A SUNBURN OFFSETS THE HAPPINESS SOMEWHAT.



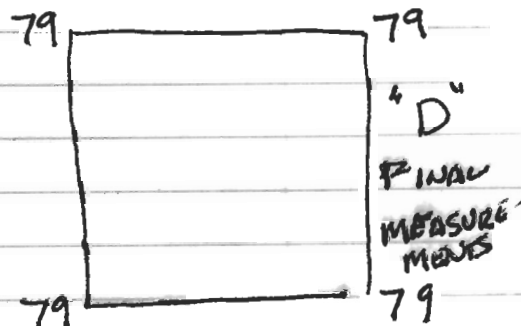
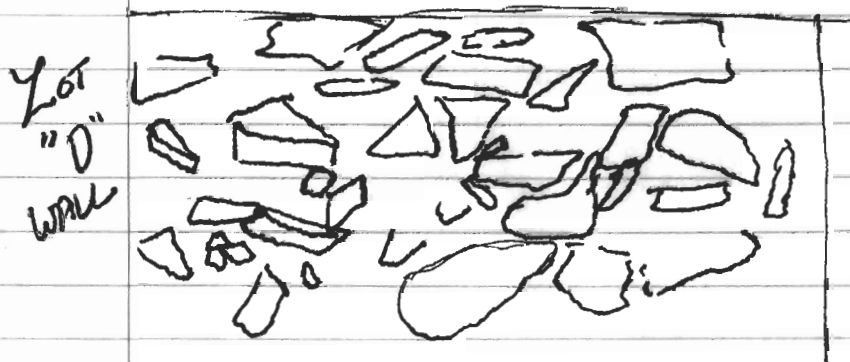
STARTING MEASUREMENTS "C"

WE BEGAN WORK ON FINDING THE BACK WALL BY CONTINUING INTO LOT "D". INSTANTLY POTTERY CHARDS WERE FOUND BETWEEN THE SW AND SE CORNERS OF THE ADJOINING WALL OF "C" AND "D" AT 55 CM.

WE CONTINUED DOWN TO 80 CM TO THE BORDER OF LOT "D". FIVE PIECES OF WHAT LOOKS LIKE ANIMAL BONE AT 75 CM IN THE SE CORNER.

TODAY PROVED MORE SUCCESSFUL IN TERMS OF COMMUNICATION AS ALL THE WORKERS AT THE SITE AND ALL THE STUDY ENGAGED IN A SPANISH/ENGLISH LESSON. THEY TAUGHT US WORDS LIKE TRAWL = CUCHARA, TARP = TOLDO, AND WE RECIPROCATED WITH THE ENGLISH VERSION.

LUCKILY, AFTER THE COMMUNICATION INTERACTION WAS OVER, THE WALL WAS FOUND.



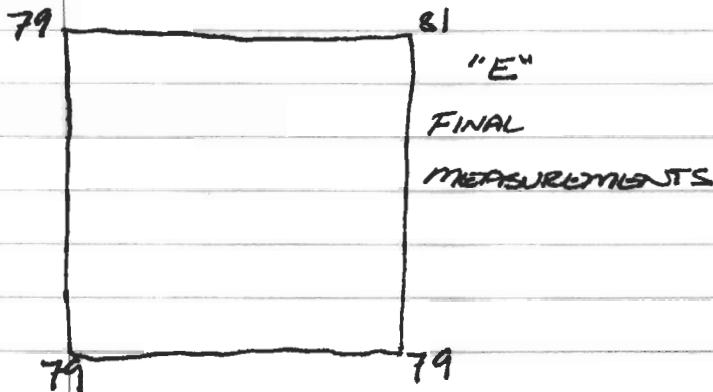
WE CLEANED UP THE LOT, PHOTOGRAPHED, AND

2009-45-11

MEASURED. AS WE CLEANED, SOIL CHANGED AT  $\approx 80$  CM

THE STONES WERE ALIGNED MOSTLY IN A BUILDING LAYOUT WITH EACH REST UPON THE OTHER. THERE WERE A FEW THAT APPEARED MORE AS TUMBLE, BUT LAY AS SUPPORTING ROCKS FOR WALL COMPONENTS. BECAUSE THE WALL LAY MORE THAN A METER DEEP, I DIDN'T COUNT THE COURSES AS I'M NOT SURE HOW MUCH FARTHER THE WALL RUNS.

AFTER LUNCH, I OPENED AN ADJACENT LOT "E" TO CONFIRM THE EXISTENCE OF THE WALL. WE DUG DOWN TO LEVEL IT WITH "D" AND DID CONFIRM AS THE WALL CONTINUED WITH COURSES PARALLEL TO ONE ANOTHER. BELL THOUGHT WHAT I BELIEVED TO BE A POSSIBLE FLOOR AS THE STONES LAY FLAT SIDE-BY-SIDE AT ROUGHLY 75 CM, WAS POSSIBLY A WALL EXTENSION. THE STONES HOWEVER WERE REMOVED TO MAP THE EXISTING WALL.



IN "E", ARTIFACTS FOUND CONSISTED OF:

AND IN "D"

25 JUNE 2009

2009-45-12

NO LIONEL TODAY "H" IS "SICK". BY THE TIME WE ARRIVED AT EIGHT, THERE WERE NO CLOUDS, A VEZY, VEZY SMALL BREEZE, AND I WAS PRAYING FOR RAIN. THOUGH IT IS EXTREMELY HOT, MIKE GIVING ME A HAIRCUT LAST NIGHT WAS ONE OF THE BEST DECISIONS I'VE MADE THE ENTIRE TRIP. SHORT HAIR IS DEFINATELY A NECESSITY IN HONDURAS.

INITIALLY I STRUNG LOT "F", BUT BEL ASKED JENICA AND I TO SET UP THE EDM FOR HER. I HAD SET UP THE EDM ONCE BEFORE AT LOS CITY, BUT DIDNT REMEMBER ALL THE STEPS IN THE CORRECT ORDER. WHAT TOOK JENICA AND I ALL OF THIRTY MINURES TOOK BEL SECONDS TO FIX AND ALIGN.

ONCE SET UP, I PLOTTED IN POINTS FOR LOT "E" (NW/SW) AS WELL AS THE WALL. I BEGAN DIGGING IN LOT "F" WITH THE HELP OF MELISSA'S WORKER, TINO.

AFTER CLEARING THE INITIAL DIRT AROUND THE SURFACE ROCKS TO ROUGHLY TEN CENTIMETERS DOWN, THE SURFACE ROCKS WERE REMOVED TO CONTINUE DIGGING.

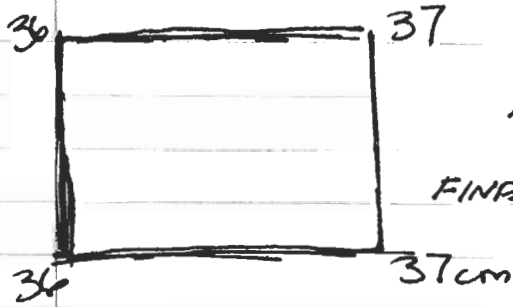
BEL THEN INFORMED ME THAT I HAD DUG, INITIALLY, IN THE WRONG LOT. SHE INSTRUCTED ME TO BEGIN AT THE BOTTOM OF THE SLOPE AND WORK UP AS I'M TRYING TO FIND A TERRACE ON THE FRONT SIDE AND NOT ANOTHER WALL AS I THOUGHT.

I ESTABLISHED ANOTHER LOT AT THE BASE OF THE HILL, "I" TO FIND THE BEGINNING OF THE TERRACE. THE BGS WAS SET TO 40CM AS A PRELIMINARY DEPTH.

AT APPROX. 25CM IN THE SE CORNER, I FOUND A PIECE OF CERAMIC THAT HAD THE COMMON DECORATION OF THE AREA CALLED \_\_\_\_\_, THAT CONSISTED OF FINGERS BEING PUSHED INTO THE CLAY TO FORM A CONTINUOUSLY LINE OF HOLES.

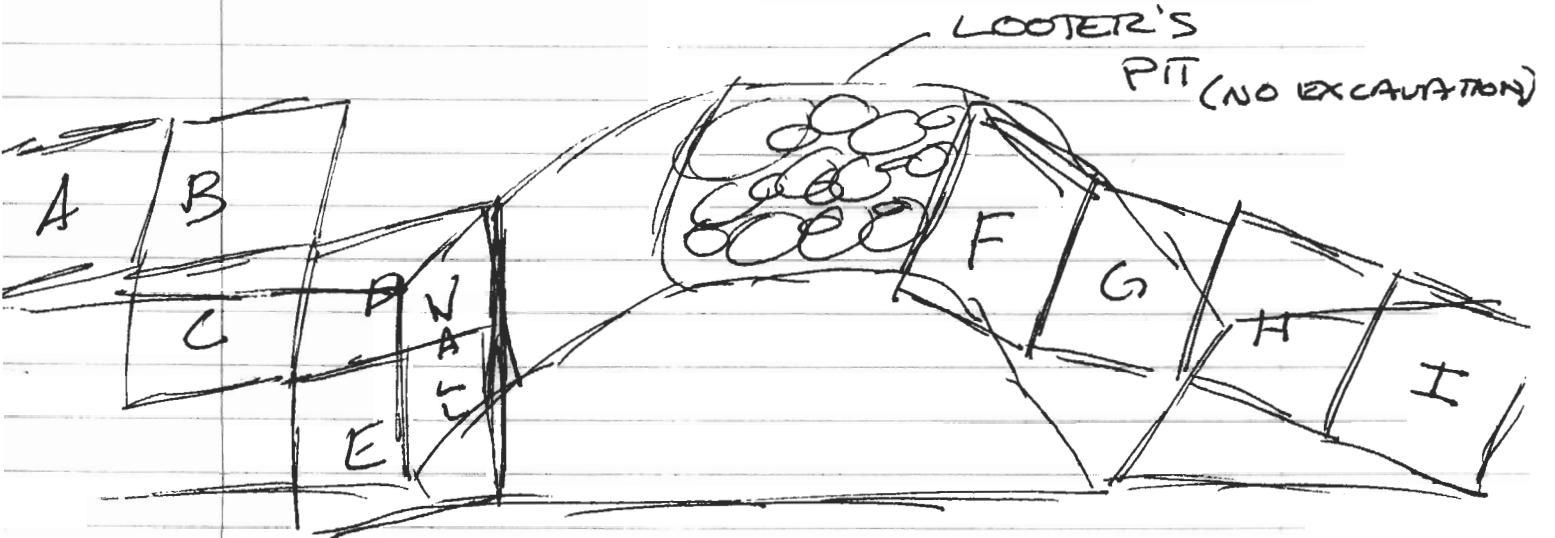
WE REACHED A SOIL CHANGE AT 35CM AND STOPPED. CLEARING OUT THE ROOTS / GRASS FROM "H" WAS ALL THAT WAS DONE BEFORE LEAVING.

2009-45-13



"I"

FINAL MEASUREMENTS



PERSONAL NOTE SECTION: THE WORKERS WERE LAUGHING AT STEPHANIE AND ME FOR OUR SUNGLASSES AS THEY STATE "GLASSES ARE ONLY FOR READING, AND NOT NECESSARILY FOR THE SUN."

ARTIFACTS FOUND AT "I"

CHERT-  
GERAMIC-  
OBSIDIAN.

26 JUNE 2009

2009-45-14

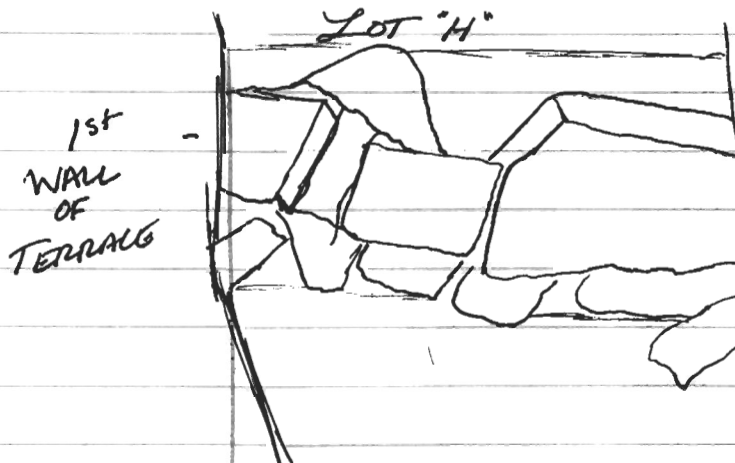
OH HOW I YEARN THEE MY BED... THOUGH I GOT AN EXTRA HOUR OF SLEEP, I STILL CRAVE MORE. SINCE LIONEL IS BACK ON SITE TODAY (APPARENTLY HE WASNT SKK, BUT PLAYING HOOKEE) I HAD TIME TO CATCH UP ON NOTES WHICH IS EXACTLY WHAT I DID.

THE FIRST PART OF THE MORNING WAS SPENT SEPARATING MATERIALS AND LABELING BAGS FROM CLOSED LOTS. BECAUSE I DIDNT HAVE LIONEL YESTERDAY, I HAD FALLEN BEHIND ON LABELING ARTIFACTS AS WELL AS NOTES.

WE STARTED ON LOT "H" IN SEARCH OF THE UNKNOWN TERRACE. BAGS WAS SET TO 40 CENTIMETERS AS A PRELIMINARY MEASURE. POTTERY FRAGMENTS AND LARGE CHUNKS OF CHERT WERE FOUND THROUGHOUT THE LOT AT VARIOUS MEASUREMENTS. SOIL CHANGE WAS HIT AT 36 CM IN THE NW CORNER. AS WE LEANED THE PIT, THE FIRST WALL OF THE TERRACE WAS DISCOVERED

HOUSE WALL = PARED

STONE WALL = MURO



FOUND ALONG THE BORDER OF LOTS "G" AND "H", THE COURSES WERE HARD TO DETERMINE AS THE FACING ROCKS DOWN SLANTED. ESTIMATING, I FIGURED THERE WERE TWO, POSSIBLY THREE.

THOUGH I WAS HAPPY WE FOUND THE INITIAL WALL, I'M REALLY GETTING TIRED OF THE WORKERS LAUGHING AT US BECAUSE OF OUR SPANISH. I MEAN I UNDERSTAND WE'RE NOT PERFECT AND PROBABLY SCREW WORDS UP, BUT AT LEAST WE'RE TRYING AND NOT JUST SITTING IN SILENCE. ALSO, IT'S GETTING REALLY ANNOYING HOW THEY KEEP COMPLAINING HOW WE DONT DO ANY WORK, BUT DONT LIKE US HELPING AS WE SLOW THEM DOWN.

ANYWAYS, WE CONTINUED INTO LOT "G" AND FOUND THE BEGINNINGS

OF A FLOOR AT <sup>50</sup>~~80~~ CENTIMETERS. LITTLE ARTIFACTS WERE FOUND THROUGHOUT CONSISTING TOTAL OF: OBSIDIAN (1), CHERT (8), AND CERAMIC PIECES (7).

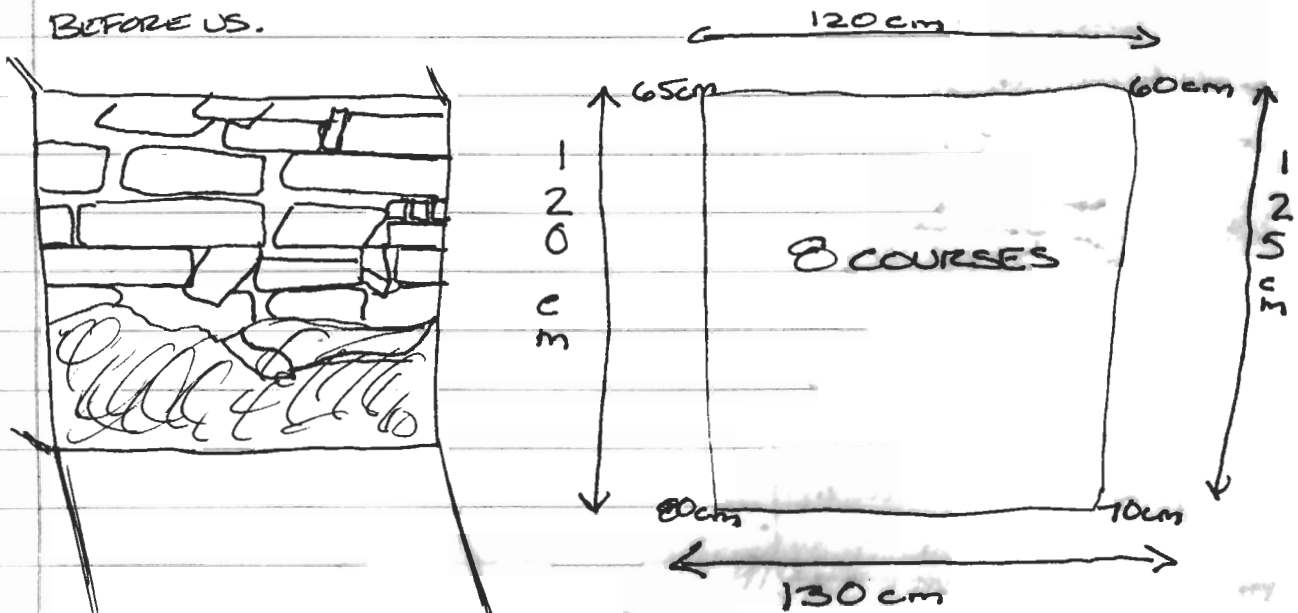
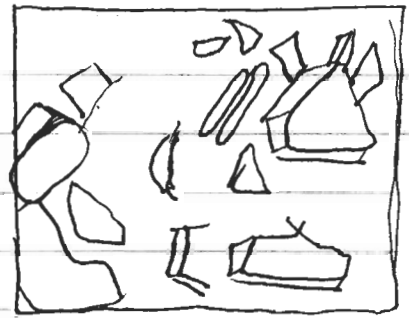
BECAUSE NO WALL HAD APPEARED AND I HAD BEGUN TO EXCAVATE "F" EARLIER, I BELIEVED WE WERE SET AT ~~80~~ CENTIMETERS AS BELL BEFORE BELIEVED THE WALL MAY HAVE BEEN DESTROYED DUE TO THE PRESENCE / SCATTER OF ROCKS BY LOOTERS. HOWEVER, BELL SAW THE FLOOR AND REQUESTED WE CONTINUE FOLLOWING THE POSSIBLE FLOOR UNTIL IT STOPS.

FOLLOWING ORDERS, WE REMOVED THE SURFACE STONES OF

"F" AND DUG DOWN TO LEVEL WITH "G" TO FOLLOW THE FLOOR. ONCE ALL 80 CENTIMETERS WERE REMOVED, THE FLOOR COULD CLEARLY BE SEEN RUNNING INTO THE BACK DIRT MOUND. DECIDING TO EXTEND BACK ONLY A

HALF METER MORE, INTO THE ROCK PILE (LIONEL WAS NOT TOO HAPPY WITH ME), WE DECIDED TO JUST GRAB THE TOP OF THE DIRT MOUND AND PULL. VOILA! THE WALL APPEARED BEFORE US.

INITIAL LOT "F"

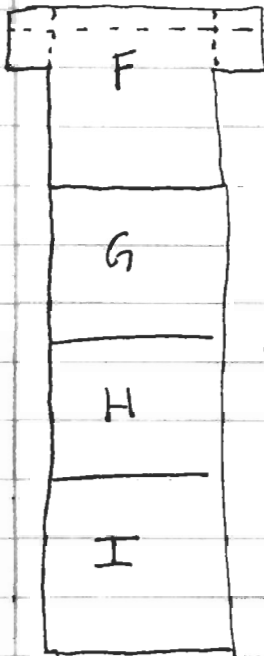


"F" INITIAL (1) MEASUREMENTS

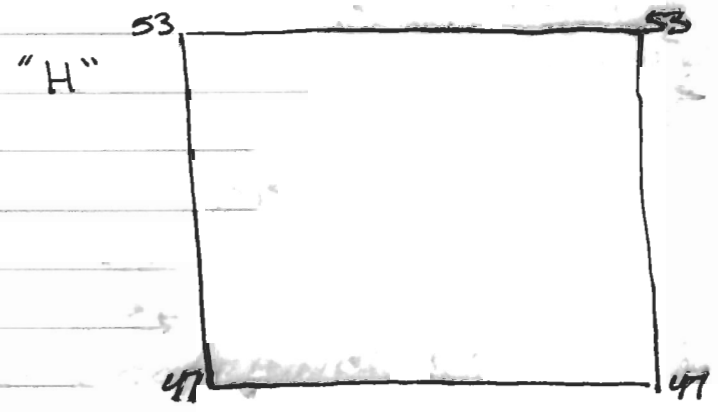
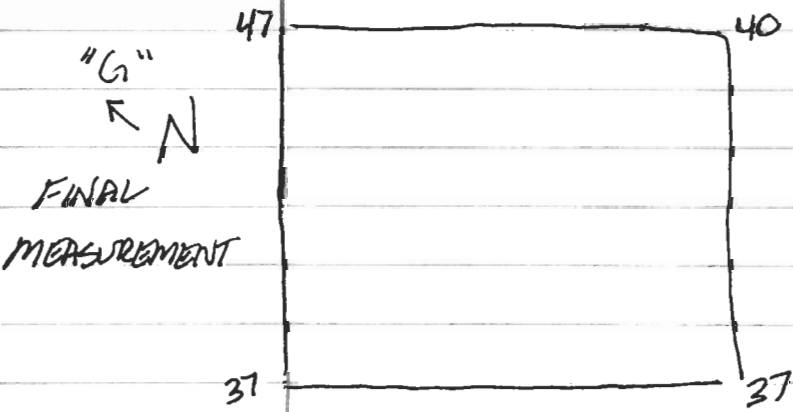
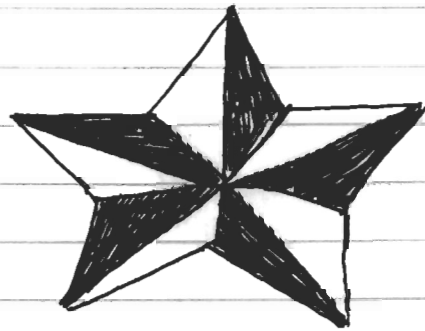


ESTIMATING, AS A LARGE DIRT PILE STILL LAY AT THE BOTTOM OF THE WALL AND BELL HADNT SEEN IT YET AS SHE HAD TO TAKE SANTIAGO THE TRUCK, THE WALL HAD ± EIGHT COURSES.

"F" HELD ONLY: POTTERY (4), BAJAREQUE (1), AND CHERT (6).



PACKING UP, WE WERE GIVEN A RIDE HOME BY SANTIAGO WHO IS A SPEED DEMON? MY BUTT HAS NEVER HURT SO MUCH (NO DIRTY THOUGHTS PLEASE) LUCKILY, WE MANAGED TO FINALLY GET IN BED BY 9:30 AFTER A WEEK OF TRYING.

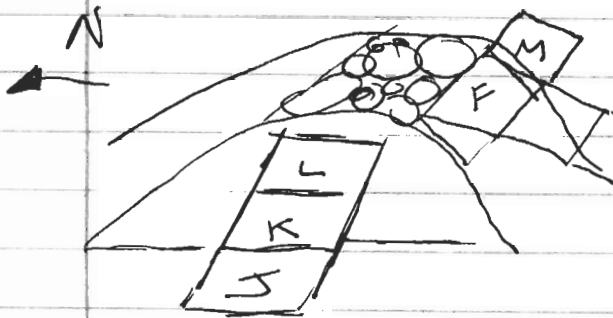


27 JUNE 2009

2009-45-17

WOW... I'VE NEVER SEEN BELL MORE PISSED. WE STARTED THE MORNING OFF BY FORGETTING THE LAB BOX AND OF COURSE, SHE NEEDED ALMOST EVERYTHING IN IT. AS SHE DROVE OFF TO GO BACK AND GET IT, WE ALL PROCEEDED TO OUR INDIVIDUAL SITES TO PROCEED AS USUAL.

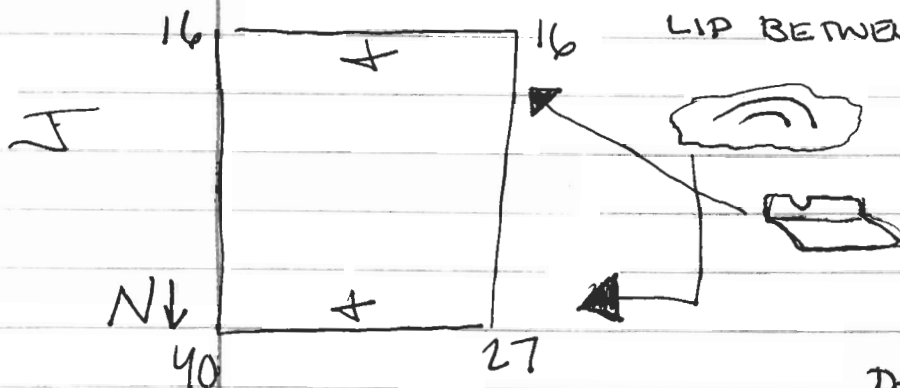
BECAUSE BELL HADN'T SEEN MY WALL IN "F", I LAID OUT THREE UNITS ON THE WESTERN SIDE OF STRUCTURE ONE.



I BEGAN EXCAVATING "J", SETTING A BGS OF 0-40cm BECAUSE BELL WAS TRYING TO CATCH UP ON POINTS, SHE HAD ME SET UP THE EDM WHILE,

LIONEL CONTINUED DIGGING. BECAUSE "F" FILL STONES CAVED IN THE WALLS, WE HAD TO PLOT ANOTHER UNIT NEXT TO IT "M".

WHILE ALL THE PLOTTING WAS GOING ON, LIONEL DISCOVERED A POTTERY JAR CAP BETWEEN THE NW AND NE CORNERS AT 36 IN AT THE BASE OF THE UNIT WALL AND A BOWL



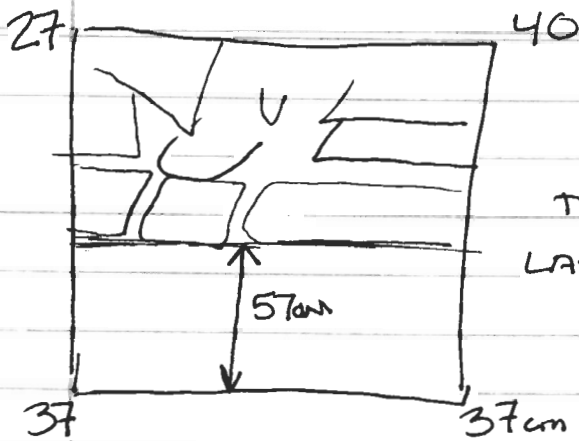
LIP BETWEEN THE SW AND SE CORNERS AT ROUGHLY 23 CM.

I USED THE EDM TO MAP IN THE COORDINATES OF THE NEW UNITS AND

THE DISCOVERED WALLS

AS WE CONTINUED DIGGING, WE DISCOVERED A REAL WALL ALONG THE BORDER OF UNITS "A" AND "K" CLEARING IT OUT, THE WALL CONTAINED TWO COURSES, SIMILAR TO THAT OF THE SOUTHERN BASAL WALL,

2009-45-18



WE HAD TO DIG PAST OUR  
INITIAL 30 BARS TO CLEAR UNDER  
THE WALL TO FIND THE BOTTOM/  
LAST COURSE.

TODAY'S ARTIFACT COUNTS  
INCLUDE:

CHERT - 22

OBSIDIAN - 3

CERAMIC - 32

BAJAREQUE - 43.

28 JUNE 2009

2009-45-19

TODAY IN MY OPINION WAS A BUST... WE WERE ALLOTTED ANOTHER HOUR OF SLEEP UNDER THE NOTION THAT BELL HAD TO PLOT POINTS AT MARY'S SITE AND THEN WOULD BE BACK FOR US TO TAKE US TO THE FIELD SO WE COULD TRY TO MAKE UP FOR YESTERDAY'S LOSS OF TWO HOURS DUE TO THE LIGHTNING STORM.

WE ENDED WAITING AROUND FOR OVER FOUR HOURS INSTEAD OF ONE AS SUGGESTED. THROUGHOUT A DOZEN CARD GAMES, ATTEMPTS TO FINISH NOTES, AND LOTS, LOTS, LOTS OF SITTING AROUND TWIRLING OUR THUMBS, SHE SHOWED UP TO TELL US THAT THE COUNTRY IS NOW IN CONTROL OF THE MILITARY AND IN A COUP, THE EX-PRESIDENT APPARENTLY TRIED TO OVERTHROW THE CONSTITUTION AND WAS CAST OUT OF THE COUNTRY. HE WAS CALLING FOR PROTESTORS SO APPARENTLY WE'RE NOW NOT GOING INTO THE FIELD.

INSTEAD, WE SPENT THE AFTERNOON DOING DATA ENTRY. BECAUSE MY COMPUTER IS SUPER-ASS SLOW!!!, I WAS BEHIND, BUT MANAGED TO CATCH UP. THE PROBLEM WITH DATA ENTRY IS YOU MUST HAVE ALL THE LOG FORMS COMPLETED WHICH OF COURSE I DIDNT. IN THE END, I WAS ABLE TO ENTER HALF AND WILL MAKE SURE TO FINISH THEM TOMORROW.

29 JUNE 2009

2009-45-20

TODAY BEGINS IN A HURRIED MODE AS ITS THE LAST DAY OF DIGGING. TOMORROW IS SHOT WITH FINAL NOTES AND BACK-FILLING SO TODAY IS ALL WE HAVE. I WANTED TO EXCAVATE THE NW CORNER TO FIND THE CORNER OF MY WALL, BUT DONT HAVE TIME. INSTEAD, TODAY I FINISHED UNIT "K" AND EXCLUDED "L"

BECAUSE "J" HAD BEEN DUG AND CLEAN ALREADY I OPENED UP "K". WE INSTANTLY HIT SOIL CHANGE AT 24 CM AND EXPOSED THE WESTERN WALL. ESSENTIALLY THE NEXT THREE HOURS, WE CONTINUED DOWN THE WALL TILL WE REACHED ITS LAST COURSE.

AT 60 CM IN THE NW CORNER,  $\frac{1}{4}$  OF A MANDU WAS DISCOVERED, MADE FROM LOCAL MATERIAL. IT WAS PHOTOGRAPHED AND BAGGED. JENICA AND I THOUGHT IT MAY HAVE BEEN THE MISSING PIECE OF HERS. A GROUNDSTONE WAS FOUND ADJACENT TO IT AT 63 CM IN THE SE CORNER.

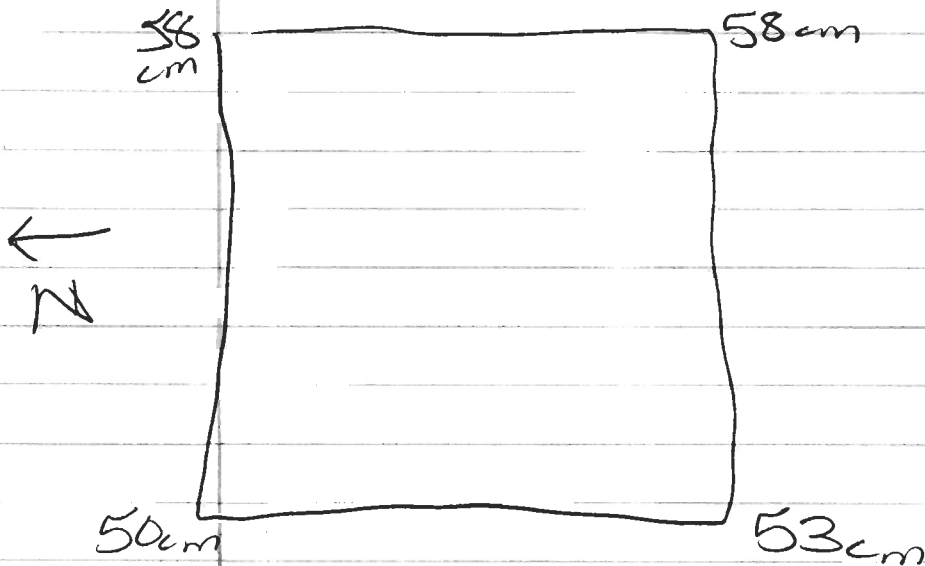
AS WE CONTINUED TO CLEAR, SEVERAL LARGE PIECES OF POTTERY WERE UNEARTHED THROUGHOUT. A POTTERY "CAP", POSSIBLY A PUT SMASH WAS FOUND AT 67 CM WITH OTHER SMALLER PIECES WITH IT, BUT DONT FIT TOGETHER. ANOTHER "CAP" WAS FOUND AT 70 CM ALONG WITH ANOTHER MANDU AT 72 CM MADE FROM STONE THIS TIME. TWO POTTERY HANDLES WERE FOUND WITH PARTIAL INSTRUMENT ATTACHMENT IN THE NW CORNER AT THE SAME DEPTH.

REACHING THE FINAL COURSE, THE WALL ENDED UP CONSISTING OF 7-8 COURSES, SAME AS THE OTHER WALLS. THE STONES WERE RECTANGULAR SHAPED AND ALIGNED TEXTBOOK PERFECT.

2009-45-21

THE PRESENCE OF POTTERY MAY INDICATE THAT CONSTRUCTION OF POTTERY, DUE TO PRESENCE OF MANOS / GRIND STONE TOOK PLACE THERE.

CLEANING THE UNIT OUT, I PROCEEDED WITH BEGINNING FINAL NOTES FOR THE REST OF THE DAY.



- 116 POTTERY
- 3 BATA
- 2 MANO
- 1 GRINDSTONE
- 11 CHERT
- 1 OBSIDIAN
- 1 QUARTZ