

1995

PVN-075-Laine-Field Notes-1995

Elizabeth Laine
Kenyon College

Follow this and additional works at: <https://digital.kenyon.edu/honduras>

 Part of the Archaeological Anthropology Commons

Recommended Citation

Laine, Elizabeth, "PVN-075-Laine-Field Notes-1995" (1995). *Four Valleys Archive*. Paper 8714.
<https://digital.kenyon.edu/honduras/8714>

This Field Notes is brought to you for free and open access by the Anthropology at Digital Kenyon: Research, Scholarship, and Creative Exchange. It has been accepted for inclusion in Four Valleys Archive by an authorized administrator of Digital Kenyon: Research, Scholarship, and Creative Exchange. For more information, please contact noltj@kenyon.edu.

NOTES

B L. W. me
C 8/28/99

P95-#75
p. 01

Monday, 30 JANUARY 1995

9:00 AM

OPERATION 55 B ^{structure} #79

weather: Cloudy + cool

Today we are setting up trenches. My mound
is 8 METERS long.

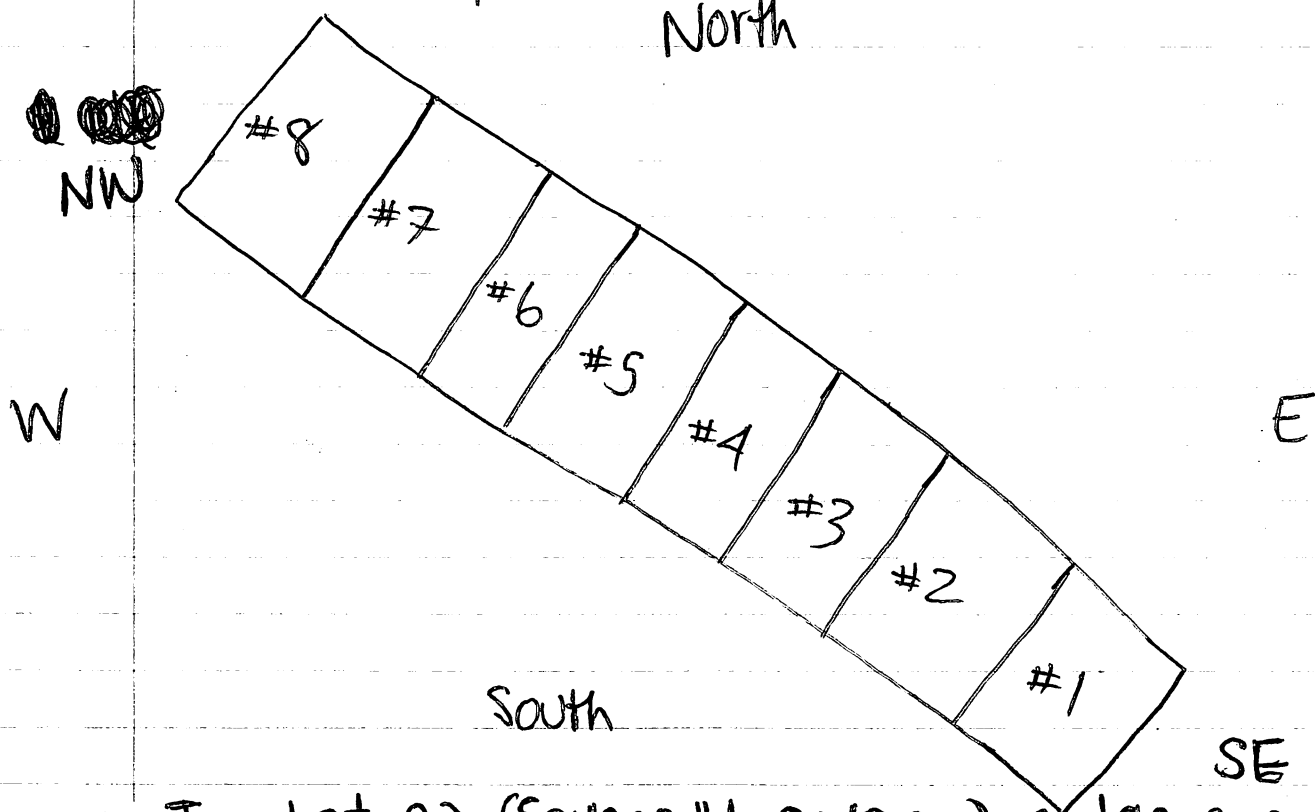
Surface collection - Lot 01
just shreds

Tuesday 01/31/95

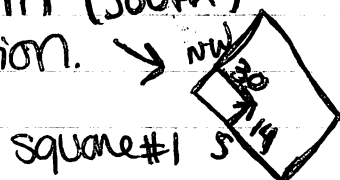
OP 55 B

Today we started excavating. We are beginning on the eastern lot - the top 10 cm of which is lot 02. Today we are just working on the first meter by meter trench. My 8 meter trench runs Northwest - Southeast. Lot 02 is in Square #1:

North



In Lot 02 (Square #1 0-10 cm), a large from shed (app. 7 cm long) found 14 cm in (South) and 30 cm in from the NW direction.

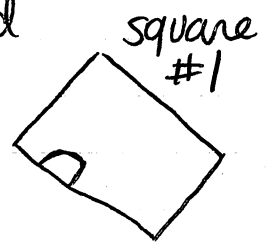


Tuesday 01/31/95 OP55B

Lot 03 - Square #1 10cm \rightarrow 20 cm

Again, more pottery sherds. Also a possible matate fragment (looks like a piece of basalt). Large pottery sherds found next to the southern wall and about 20 cm in from the NE.

Also a piece of obsidian was found. (2)



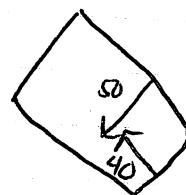
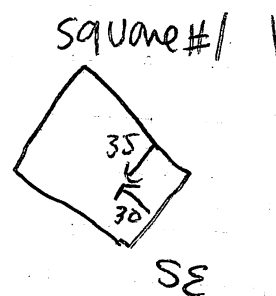
workers:

~~XXXXXX~~ Feliz Martinez
y Hector Danillo

A sherd of mana was found also
in square #1 10 \rightarrow 20 cm

Wednesday 02/01/95 OP 55 B

Today we are starting excavation of Lot 04, which is in square #1, the southeasternmost square. Lot 04 is the 20 cm \rightarrow 30 cm section of square #1. The weather is cloudy and cool again like yesterday. Lots more pottery sherds are present in this lot. A large piece was found 30 \rightarrow cm in from SE and about 35 cm in from the NE. Almost a ~~quarter~~ quarter circle of a bowl was found next to this large piece 40 cm in from SE and 50 cm in from NE \rightarrow side of square #1. A sherd with some sort of handle was also found in this lot 04.



square #1 20 cm \rightarrow 30 cm Lot 04

P95/#75

P.05

02/01/95

OP 55 B

square #1

30cm → 40cm lot 05

tiesto = sherd

Pottery sherds still present in
this layer. Also obsidian was found.
A white shell was found also. - 4 total
so far.

P95/#75

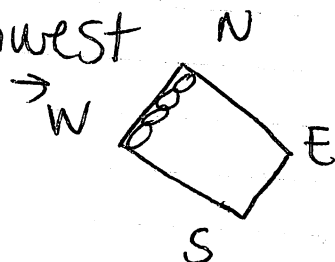
P.06

Wednesday 02/01/95 OP 55B

Lot 06 : Square #1 40cm \Rightarrow 50cm

More pottery sherds & obsidian.
Also more shell fragments.

Some baja reque. Lots of large
rocks are present, but not in any
apparent form, except some
possible stacking in the northwest
part of square #1.



Thursday 2/2/95 OP 55B

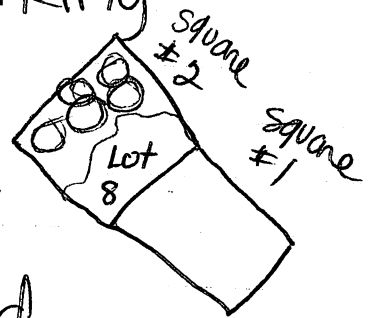
Today I am finishing up the 40cm \rightarrow 50cm in Square #1 and then continuing on to Square #2. There is possibly some sort of stacking of rocks starting about 20 cm down, so we are exploring in Square #2 to see if we find any consistencies. More pottery sherds were still found in Lot 06 (Square #1; 40cm \rightarrow 50cm). The orientation of my trench is North \approx 80° West.

Lot 07 is in Square #2 0cm \rightarrow 10cm

There are mainly just pottery sherds present in Lot 07. Soil is a bit darker here than in Square #1.

2/2/95 ~~THU~~ Thursday OP 55B

Lot 08 is in square #2. We are digging down to the stacks of rocks (that level in square #1) and working in towards square #2. We are still trying to see what we are working with: if it's just tumble, or a terrace or a wall or what. We found a piece of obsidian with a pointed end here in Lot 08. Also we found some chalk and baja reque.



The chalk is just naturally occurring limestone. We are excavating down more in the half of square #2 which is closest to square #1. Lots of pottery sherds still found here. So far, we've gone down about ≈ 15 cm below Lot 07 (0cm \approx 10cm), and in $\frac{1}{2}$ of square #2. We are down 25 cm in the $\frac{1}{2}$ of square #2. Also found a stone tool.

Friday 2/3/95

OP 55B

Today we start w/ a total of 25 cm down on the $\frac{1}{2}$ of square #2 closest to square #1; and 10 cm down in the other $\frac{1}{2}$ of square #2.

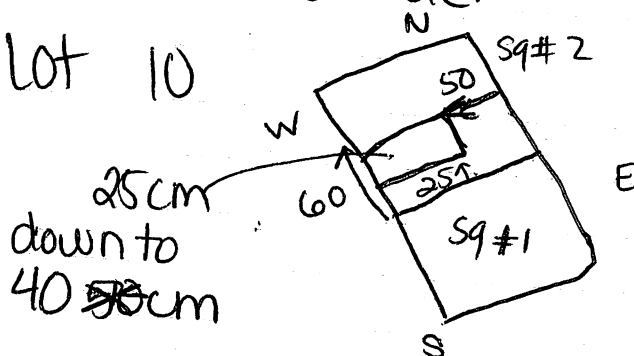
Lot 09 - we are starting today to excavate inwards from square #1 into square #2. About 10-15 more centimeters down, we are working inwards to see if we find a wall. Lot 09 is in square #2, from the 25 cm mark down on the SE most part of square #2 (closest part to square #1). About 35 cm down on the southern side, a large piece of sherd was found. So far, I don't know how far into square #2 Lot 09 will end up being. We are taking away little by little into square #2, about 40 cm down, so it's from the 25 cm mark to 40 cm mark (Lot 09). Now we are going down even w/ square #1 to 50 cm in square #2. So Lot 09 is 25 cm \rightarrow 50 cm in 1st part of square #2 - 25 cm in. ~~At~~ Only pottery sherds found in Lot 09.

Friday 2/3/95

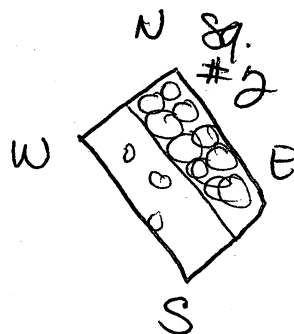
OP 55B

Lot 10 is in Square #2, starting at in and going to 60 cm into square #2 from the square #1 side. There is a small possibility of a wall, so we are now excavating 50 cm in from the NE side over to the end of the SE side.

Lot 10



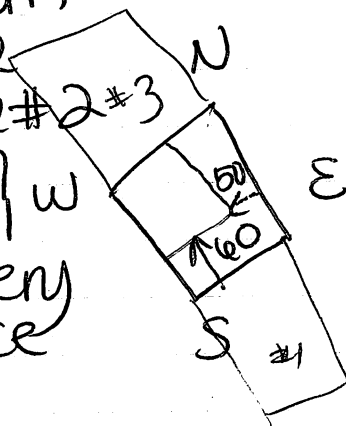
There wasn't any visible structure where Lot 10 was excavated. There are more rocks on the NE half of square #2 than on the SW part of square #2. Only pottery sherds were found in Lot 10.



Friday 2/3/95

OP 55B

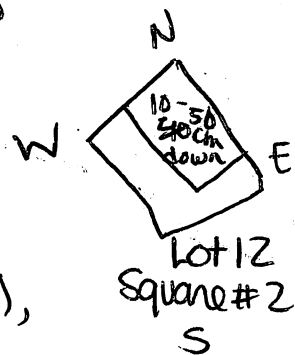
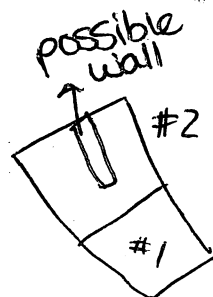
Since we didn't really find anything in excavating Lot 10, we are now starting to excavate 50 cm in from the NE side; all the way back to the end of square #2 #3 ~~the~~ nearest square #3. Also down 10 cm \rightarrow 40 cm. In from square #1 60 cm. This will be Lot 11. Pottery sherds are present, as well as a piece of Baja Reque and obsidian.



Monday 2-6-95

OP 55B

Today we are still working on Square #2. There did not appear to be a wall running the length of the trench, so now we are excavating Lot 12: it's in Square #2, 10-~~40~~cm down; 50 cm in that's in from the NE side and 10 cm in from SE side. On observing the entire excavated portions of the trench, there is a possibility of a wall on the SE side of Square #1, closest to OP 55C. We plan to examine that later. In Lot 12 so far, pottery sherds, baja reque & obsidian have been found.



Monday 2/6/95

OP 55B

Lot 13 is in Square #2; 50cm-60cm down. There is almost definitely a wall on the side that separates Square #2 and Square #3. We are excavating down ten more centimeters in Square #2 to see if we find more stacked rocks below. So far a few pottery sherds were found, as well as an ocharina - the first one found on my site. On uncovering this bottom layer, we found a definite early wall crossing the trench at about a 45° angle. This lower feature is called AFRICA. There is possibly a later feature crossing straight over the Square at an angle parallel to those separating the squares. We'll call this EGYPT.

change 2/7 This later wall which is hardly visible will not be named. EGYPT will be the name of the feature which starts at the line separating Squares #2 + #3. It is a wall.

Monday 2/6/95

OP 55B

Now we are starting excavation in Square #3. Lot 14 is 0cm \rightarrow ~~20cm~~³⁰ down in Square #3 and also 30cm into Square #4. The reason we are going into Square #4 is that there is a dense area of rocks on the top of the mound which start 30cm into Square #4. We are going down 20cm because that is where the rocks start to pile up in Square #2. We've found pottery sherds + obsidian + shell, and baja regue. We also found one leg to a matate piece. After excavating down 30cm in Square #3, we are clearing away 4-5 cm around the AFRICA + ~~EGYPT~~ features to see if there are more rocks. Things found here will be bagged under LOT 15. Pot sherds were found here — these will be bagged under LOT 15.

Tuesday 2/7/95

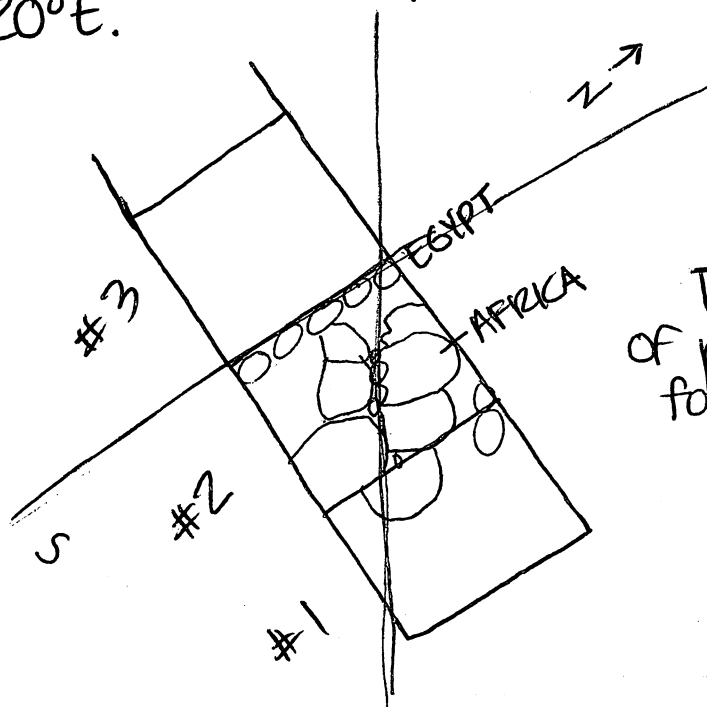
OP 55B

Now that we have uncovered some features in Squares #1 + #2, we are going to start in from the other side at Square #8. But first, we are also excavating all the way into Square #1 to possibly uncover more parts to this wall. Any sherds found in this provenience will also be bagged under LOT 15. Baja reque was also found in this lot. Squares #1 and #2 are down roughly now to 60cm.

Tuesday 2-7-95

Lot 16 is in Square #8, starting at 0cm and down either to 10cm or 20cm, depending on how many sherds there are, most likely 0cm = 20cm. So far pot sherds + obsidian have been found; also a small piece of bone. Since we found a possible wall on the Side beginning w/ Square #1; we are coming in from the other side to see if we find another wall. The orientation of feature AFRICA is N 60° W. The orientation of feature EGYPT, the wall between Squares #2 + #3, is N 20° E.

ε, baja
requer



Three large bags of pot sherds were found in LOT 16.

Tuesday 2/7/95

OP 55B

We are still working in Square #8;
LOT 17 is 20cm \Rightarrow 30cm down. We've
found pottery sherds, obsidian & baja
reque.

Wednesday 2/8/95

We are finishing up Lot 17,
20cm \Rightarrow 30 cm today in Square #8.
Now we are going deeper into
Square #8; LOT 18 is 30cm-40cm.
We found an ocharina here and
also of course pottery sherds; and
some obsidian and baja reque.

wednesday 2/8/95

OP 55B

We are still working in Square #8.
LOT 19 will be in Square #8, 40cm \rightarrow 50cm.
Pottery sherds found here also, and
obsidian, bone, and shell. There are
not nearly as many rocks in Square #8
as Square #1, which indicates we are
well outside the main tumble of the
structure. In LOT 19 we also found
part of an ocharina. At the 60cm
level, three large chunks of baja
reque were found.

Thursday 2/9/95

OP 55B

We are starting in Square #7 today. LOT 20 will be in Square #7, 0cm \rightarrow 20cm. Pottery sherds, bones, baja reqve, (2 big bags) obsidian

LOT 21 is also started today - Square #4, 30cm in from Square #3, and 0cm \rightarrow 30cm - working gradually back to Square #5. There is a concentration of rocks on the surface of Square #4, as well as on Square #5. Pottery sherds + baja reqve found

LOT 22 is in Square #3, 30-40cm and Square #4 30cm \rightarrow 40cm Pottery sherds

LOT 23 is in Square #7, 20cm \rightarrow 40cm Many pottery sherds were found on the top 20 cm of Square #7. pottery sherds, baja reqve, obsidian

LOT 24 is working into Square #5 0cm \rightarrow 40cm only in front of CHINA Possible wall transecting trench pottery sherds, baja reqve cont.

Thursday 2/9/95 OP55B

LOT 24 con't. There is a definite wall crossing the trench, probably the summit wall. Its orientation is $N 50^{\circ} W$. The name of the feature will be CHINA.

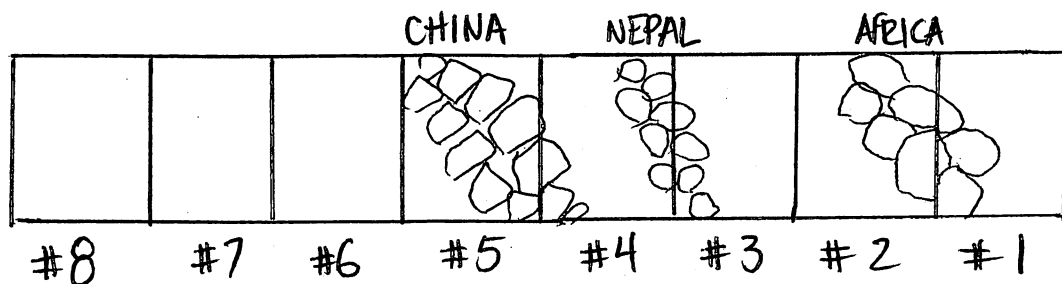
Lot 25 is in Square #3 40cm ~~= 60cm~~ in front of another wall, (possible), which is parallel to CHINA. This feature will be called NEPAL. Pottery sherds, matate leg, & candle holder found.

Friday 2/10/95 OP 55B

We are finishing up Lot 23 today, Square #7, 20cm-40cm. After we level Square #7 off at 40cm, we will finish Lot 25, clearing in front of feature NEPAL, down to 60cm. More pottery sherds found here, though not very many. We are going to set up another trench today transecting my first trench to further explore the orientation of my walls. Feature EGYPT is no longer existing, due to our later assessment that it is not a wall. It was dismantled during Lot 25, to clear in front of NEPAL.

Friday 2/10/95

OP 55B

Trench
#1

descending order: CHINA: starts 5 cm below surface
 NEPAL: " 40 cm "

AFRICA: [smaller rocks] ~ 55 cm below surface

We are going to set up a new trench transecting trench #1 in Squares #5 and part in #6. This will be called Operation 55F. We are starting to excavate in Square #1 today.

Lot 01 ~~XXXXXX~~ will be Square #1 (OP 55F)
 0 cm → 20 cm

Orientation of OP 55F is:

S40°W. or N40°E

In LOT 01 OP 55F, pot sherds, baja reqre & obsidian found.

A donut stone was just found in my rock pile. It is unprovenienced, but is from somewhere in the first 4 Squares of OP 55B. It's lot 26.

Friday 2/10/95

~~10/10~~

Lot 27 (55B) is in Square #6

0cm \rightarrow ~20cm to uncover more
of feature CHINA. Pottery sherds, bones
Appears there may be a corner to CHINA
present in Square #6 of 55B.

Lot 02 (55F) is in Square #1

20cm \rightarrow 40cm

Pottery sherds, baja reqre, obsidian
Numerous rocks found - all loose
and in random placement.

MONDAY FEB. 13

OPERATION 55 I is in the same
trench as OP 55F, only it is the
SW 3 and 4 Squares - OP 55F is
the NE part of the trench oriented
N 40° E. LOT 01 of 55I is Square #1
0cm \rightarrow 20cm. Pot sherds, bones, baja reqre

55F LOT 03 is Square #1, 40cm \rightarrow 60cm
pottery, obsidian, baja reqre found
"candelero", rodent teeth

Monday 2/13/95

55F/04 is in Square #2, 0cm \Rightarrow 20cm
Pottery sherds, baja reque

55I/02 is in Square #1 20cm \Rightarrow 40cm
Pottery sherds

Tuesday 2/14/95 Valentine's Day ♥

We are finishing up 55I/02,
Square #1 20cm \Rightarrow 40cm today. Pot sherds

55F/05 will be in Square #2,
20cm \Rightarrow 40cm
Pottery sherds, baja reque, tooth

55F/06 - Square #2 40cm \Rightarrow 60cm
Pottery sherds, ocarina, obsidian,
baja reque

55I/03 - Square #1 40cm \Rightarrow 60cm
Pottery sherds, candelero
baja reque, obsidian

Tuesday

~~Monday~~ 2/14/95

55F/07 Square #3 0cm \rightarrow 20cm
pottery sherds
obsidian

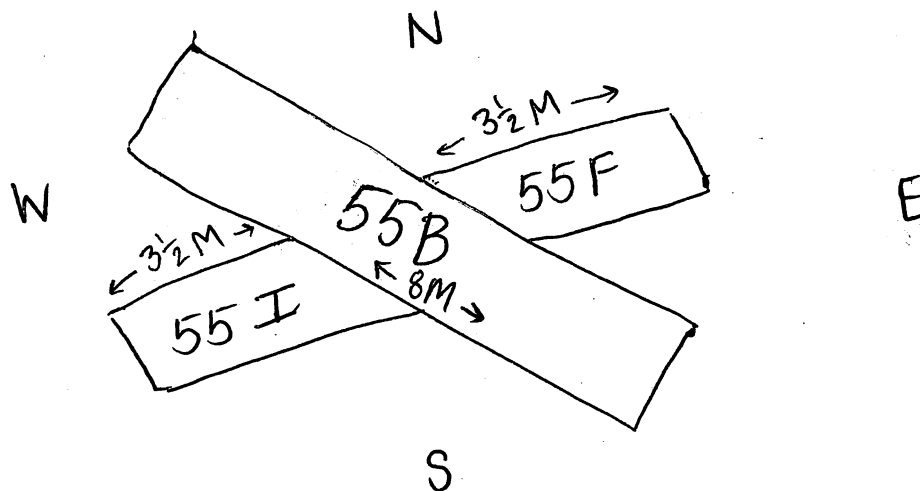
Wednesday 2/15/95

55F/08 - Square #3 20cm \rightarrow 40cm
pottery sherds, baja reque

55I/04 - Square #2 0cm \rightarrow ~~30~~ 60 cm ^{in front of BRACIL}
pottery sherds, baja reque, metal piece
stamp

OP 55F is $3\frac{1}{2}$ meters long approximately
to where it crosses 55B.

OP 55I is also $3\frac{1}{2}$ meters long.

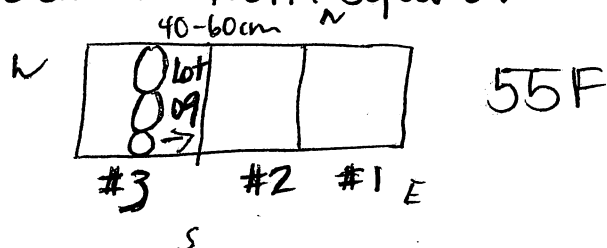


Wednesday 2/15/95

There appears to be some sort of floor or wall in Square #3.

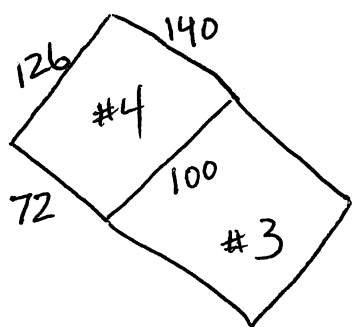
Lot 55F/09 will be 40cm \rightarrow 60cm in front of this possible feature in Square #3 - 50cm in from Square #2.

Pottery sherds
obsidian



Beginning with the division of Squares #2 + #3, there are 3 rows of steps, the second one being in the middle of Square #3 + the third line on the border of Squares #3 + #4. They run perpendicular to the trench OP 55F. Their names, starting with the one closest to square #2 and also the lowest: FRANCE, SPAIN, ITALY.
{ 55cm 30cm 20cm } BELOW SURFACE

Square #4 is on a slant, so it is not a perfect square meter.

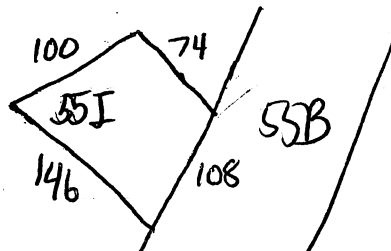


← Dimensions

Lot 10 / ^{OP}55F - Square #4
pottery sherds 0cm \rightarrow 30cm

Wednesday 2/15/95

Square #3 in OP 55I will extend to go to OP 55B. Dimensions are:



I will refer to this area as simply Square #3 (OP 55I)

Lot 05 (OP 55I) is in Square #3 0cm, 30cm pottery sherds, matate piece

Thursday 2/16/95

Today - first we are cleaning up a little in OP 55B + 55F. In 55B, we are simply clearing the line to the exposed corner of CHINA in Square #6. The sherds found here will be under LOT 28, pot sherds OP 55B. Also, in 55F, we are clearing more behind ITALY in Square #4, about 10 cm to remove tumble. Anything found here will be bagged under LOT 55F/11.

(30-40 cm)

obsidian

pot sherds
baja regre

Thursday 2/16/95

Today we are setting up two new operations - 55L and 55M.

OP 55L will follow out FRANCE to the NW. We are just going to start with one meter, and move out one meter at a time until we find the NW corner of feature FRANCE (in OP 55F).

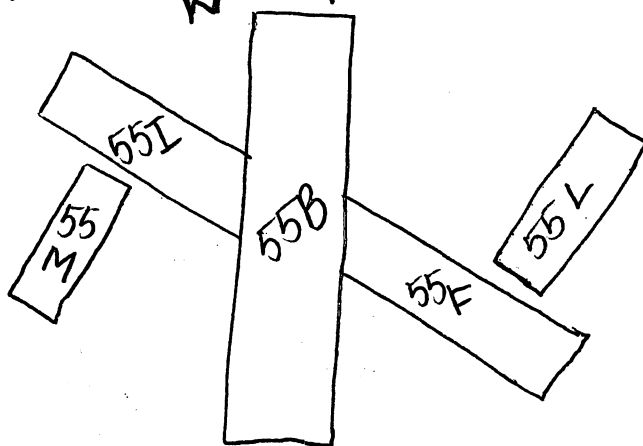
OP 55M will follow out wall BRAZIL (which is in OP 55I) the only feature found in that operation. Again, we are going out meter by meter until we find the SE corner of feature BRAZIL.

55L/01 is in Square #1, 0cm-20cm pottery sherds, baja reque

55M/01 is in Square #1, 0cm-⁴⁰~~30~~cm

Pot sherds,
obsidian
ocarina piece
baja reque

OPERATIONS
LAYOUT



Thursday 2/16/95

55 L/02 is in Square #1 20cm \Rightarrow 40cm
pottery sherds, baja reque, pink chalk

new workers

Arriba
José Rito Borjas

José Alfredo Ramirez Marces

55 M/02 is in Square #1 40cm \Rightarrow 60cm
to clear in front of BRAZIL.
pottery sherds
obsidian
baja reque

Friday 2/17/95

We are beginning today by finishing up lots 55 L/02 and 55 M/02. Yesterday we did a cross-section drawing of ops 55 I, part of 55 B that is intersected, + 55 F.

Friday 2/17/95

Lot 55L/03 is in Square #1 40cm \rightarrow 60cm
pottery sherds
mano piece
baja reque

Lot 55M/⁰³~~00~~ is in Square #2 0cm \rightarrow 20cm
pottery sherds we are following out feature
baja reque BRAZIL.

Lot 55L/04 is in Square #2 0cm \rightarrow 20cm
Square ~~00~~ #2 is also next to 0P55F.
We are now trying to uncover SPAIN,
as FRANCE was uncovered by
Square #1. Pottery sherds, cow teeth, ocarina

55M/04 is in Square #2 20cm \rightarrow 40cm
pottery sherds obsidian
candelero bottom of a cup
baja reque

Monday 2/20/95

Today we are still working on uncovering the base of my whole structure.

55L/05 is in Square #2; 20cm \rightarrow 40cm.
We are trying to follow out
feature SPAIN.
Pottery sherds, baja reque, obsidian
cow bones

55M/05 is in Square #2; 40cm \rightarrow 60cm
still following out BRAZIL.
Pottery sherds mano baja reque
censer fragment pottery leg

Next in 55L we are taking the
tumble in front of SPAIN down to
FRANCE's level in Squares #1 & 3.
Next we will follow out FRANCE to
discover its corner.

Next in 55M, there is a possibility
that we have found the corner of BRAZIL,
so we are going out another 50cm to make
sure & then we're taking out the bulk
between 55I & 55M over BRAZIL. Then
we will follow BRAZIL up.

Monday
~~Friday~~ 2/20/95

Now in 55M we are going to take out
the bulk between 55M + 55I. Sherds
found here will be under 55M/06.
Pottery sherds, baja reqve, ocarina

In OP 55L we are now digging in
Square #3 which is beside
Squares #1 & 2 to follow out
FRANCE + SPAIN.

Lot 55L/06 is in Square #3, 0cm → 20cm
pottery sherds

Now in OP 55M we are taking it out
50cm more to make sure we have
the SE corner of BRAZIL (0cm → ~60cm)
This will be LOT 55M/07. Pottery sherds
We will call it ~~Square #3~~ Square #3 baja reqve

Lot 55L/07 is in Square #3 20cm → 40cm
pottery sherds, baja reqve, obsidian
cowbones

Tuesday 2/21/95

In OP55L we are taking out
50 cm more above Square #3.
Lot 55L/08 will be Square #4 0 → 100 cm
pot sherds, obsidian, cow bone

OP55M, we are also taking out 50 cm
above Squares #2 + #3 to make
sure BRAZIL follows up. around SE corner of BRAZIL
Lot 55M/08 is in Square #4 0 cm → 60 cm
Pottery sherds, baya reave, figurine head
shell fragment obsidian, cow bones

Wednesday 2/22/95

It rained yesterday, so we only
got half a day of excavation in.

Today we are starting by finishing
up lots 55L/08 and 55M/08.

In OP55L, we are next going to clean
out a little more on top of + around ~5 cm
the continuation of FRANCE in Squares #1 + 2.
Sherds found here bagged under Lot 55L/09.

Next we are going to create

Square #5, which will be a meter square
on the southern side of Square #2, and
also next to OP55F.

baya reave
pottery
sherds
candle

Wednesday 2/22/95

In ~~75M~~ OP 55M we are next creating a fifth square of excavation that will follow CHINA out ^{SUB} to the SE side (see drawing of all operations)

LOT 55M/09 will be in Square #5,
0cm \rightarrow 20cm
pottery sherds, baja reque

LOT 55L/~~10~~ will be in Square #5 ^{to follow out} ITALY & SPAIN
0cm \rightarrow 20cm
pottery sherds baja reque
obsidian

LOT 55L/11 will be in Square #6, which ^{0cm \rightarrow 20cm}
will connect 55L with 55B at the
NW corner of CHINA.

Also possibly to uncover part of NEPAL.
Square #5 is 1 meter by 107cm +
1 meter by 70 cm

(see Drawing) pottery sherds, bone, obsidian
~~bone~~ baja reque

55M/10 is in Square #6 0cm \rightarrow 20cm
pottery sherds, candellero,
baja reque, obsidian

Thursday 2/23/95

Today we are finishing up lots 55M/10 and 55L/11 first. In Square #6 in 55L we are possibly looking to pick up the NW corner of NEPAL, or at least a continuation of it.

Now in 55M we are starting lot 55M/11, which is in Square #6, 20cm \rightarrow 40cm

We are trying to see what the face of a wall that is connecting BRAZIL + CHINA looks like.

Pottery sherds, baja reqre, obsidian, pendant, metate leg

In OP 55L, we are next taking the bulk out between Square #6 and OP 55F.

Lot 55L/12 is the bulk down to 30cm. Pottery sherds, baja reqre, obsidian

Lot 55M/12 is in Square #7 0cm \rightarrow ⁶⁰ 80cm to continue to follow BRAZIL up
pottery sherds baja reqre
candelero obsidian

Monday 2/27/95

First today we are finishing up lot 55M/12, Square #7, 0cm \rightarrow 20cm. We are continuing to chase BRAZIL to the NE.
pottery sherds, candelero, baja reque, obsidian

We are clearing the bulk bet. OPS 55L and 55F. Lot 55L/13 is the bulk 0cm \rightarrow 30cm between Square #5 and OP 55F.

Pottery sherds

Lot 55L/14 is the bulk bet. Square #2 and 55F. 0cm \rightarrow 30cm
Pottery sherds, baja reque

55M/13 - Square #8
to uncover NE corner of BRAZIL
pottery sherds, baja reque, metate leg fragment

Lot 55L/15 is the Bulk between Square #1 and OP 55F.
pottery sherds, obsidian

There is a line of rocks running N-S in the interior of the room formed by CHINA and BRAZIL. This feature will be named TIBET.

55L/16 is 10cm more on top of FRANCE, Square #2
pottery sherds, obsidian

Tuesday 2/28/95

Today we are starting by finishing up Lot 55L/16.

We are also starting Lot 55M/14, which is a meter of bulk between Squares #4 & #6. 0cm → 40cm.

Pottery sherds, baja reque, metate leg

In OP55L, there is a cluster of rocks that looks like a possible floor surface in Square #5. We are going to take the operation out another meter to the west to see if more rocks appear in that same fashion.

Lot 55L/17 is in Square #7; 0cm → 20cm

Pottery sherds, obsidian, baja reque, incensario

55M/15 is the Bulk between Square #5 + 7
0cm → 40cm

Pottery sherds, baja reque, obsidian
stone ball

55L/18 is in Squares #1 + #2. We are clearing to find the corners of FRANCE + SPAIN.
pottery sherds, baja reque, obsidian

Tuesday 2/28/95

Lot 55M/16 is in Square #5; 10cm → 40cm
Pottery sherds, baja reque, obsidian

Lot 55L/19 is in Square #2; 40cm - 60cm
Pottery sherds, baja reque,
obsidian, figurine fragment

Wednesday 3/1/95

Today we are starting by continuing to excavate down further in OP55L.

Lot 55L/20 is in Square #3; 40cm → 60cm
Pottery sherds, metate leg, baja reque, shell

Lot 55M/17^{NE} is clearing the corner of
the BRAZIL-CHINA platform that will
clear the bulk between 55M and 55B.
Pottery sherds, baja reque, candelero

Wednesday 3/1/95

In OP55M, we are now clearing the SW corner of the BRAZIL-CHINA structure. 0cm \rightarrow 60cm is 55M/18

Pottery sherds, ~~obsidian~~, figurine fragment
donut stone, obsidian, baja reque

In 55L, we are working in Squares #2 and #4 clearing everything down to 60cm except a corner of rocks in Square #2.

55L/21 is in Squares #2 + #4
down to 60cm

Pottery sherds, baja reque, obsidian

Now in 55L, we are taking everything down to 60cm in Square #7 (20cm \rightarrow 60cm), to see if we can see the west face of a possible wall that separates Squares #7 and #5. Lot 55L/22 is 20cm \rightarrow 60cm in Square #7.

Pottery sherds, metate leg, metate fragment
baja reque, obsidian, pendant

Thursday 3/2/95

Today we are starting by finishing up lots 55M/18 and 55L/22

Thursday 3/2/95

We are starting sub-operation 55W, which will be to the east of OP55F.

Its purpose is to chase out FRANCE, SPAIN, and ITALY, and to connect and clear bulk between OPS 55F and 55B.

Lot 55W/01 is in Square #1, 0cm \rightarrow 40cm
Pottery sherds, obsidian, baja reque

Monday 3/6/95

We are starting Lot 55W/02; Square #1
40cm \rightarrow 60cm
Pottery sherds

In OP55L, we are creating an 8th Square to further explore what is happening past FRANCE, SPAIN + ITALY.

Lot 55L/23 0cm \rightarrow 20cm
Pottery sherds, baja reque

55W/03 is the bulk between 55F and 55W.
0cm \rightarrow 60cm Pottery sherds, obsidian
So far, there is no obvious continuation of FRANCE or SPAIN, so possibly it is under the bulk.

SOPA DE BATA REQUE

Monday 3/6/95

Lot 55W/04 is in Square #2; 0cm \rightarrow 20cm
Pottery sherds, obsidian, shell

Lot 55L/24 is in Square #8; 20cm \rightarrow 40cm
Pottery sherds, obsidian, figurine fragment,
baja reque

Tuesday 3/7/95

In OP 55W, we have possibly found where
FRANCE, SPAIN, & ITALY corner and head up
to CHINA. Their corners possibly correspond
to a corner on NEPAL.

Lot 55W/05 is clearing around the (Square #2)
corners of FRANCE, SPAIN, & ITALY. 20cm \rightarrow 60cm
Pottery sherds, baja reque

In OP 55L, we are searching for a wall
that leads back to CHINA on the western
sides of FRANCE, SPAIN, & ITALY. We are clearing
around the cluster of rocks in Square #5 - Lot 55L/25.
Pottery sherds, obsidian

Back in OP 55M^{down to 40cm}, we are going to clear out
where NEPAL ~~is~~ corresponds w/ FRANCE,
SPAIN & ITALY's corners back to BRAZIL-CHINA
structure. This will be Lot 55M/19.
Pottery sherds

Wednesday 3/8/95

Today we are starting by just taking some bulk out of OPS 55W + 55L.

55W/06 is the bulk next to Square #1 that connects to 55B. 0cm \rightarrow 60cm.
Pottery sherds, obsidian

55L/26 is the bulk next to Square #8 that connects w/ 55B. 0cm \rightarrow 40cm.
Pottery sherds, baja reque, metate leg + fragments
obsidian figurine fragment

55W/07 is in the vicinity of the continuation (?) of AFRICA in Square #2.
down to \sim 65cm. Pottery sherds, obsidian
~~by~~ baja Reque

The feature that corners w/ ITALY on the west and heads back parallel to CHINA is feature JAPAN.

Thursday 3/9/95

Today we are going down to sterile in Square #1 of OP55F.

Lot 55F/12 — is in Square #1
60cm → 100cm (STERILE)

Pottery sherds, obsidian, baja reque, shell, carbon

We are continuing to excavate in front of JAPAN.

Lot 55L/27 is the area in front of JAPAN down to 60cm.

Pottery sherds, baja reque, bones, obsidian

Friday 3/10/95

Today we are starting by continuing Lot 55F/12 which is in Square #1 trying to find where sterile soil begins. — (100cm)

We are also cleaning up more where JAPAN meets CHINA. This will just be a continuation of the area covered by Lot 55L/27. We'll call it 55L/28.

Pottery sherds, candelero, baja reque, obsidian, bones, shell

Also in 55M, we are clearing away more where the steps of FRANCE, SPAIN, ITALY + NEPAL meet CHINA. Lot 55M/20 is in this area
Pottery sherds, Baja reque, obsidian

Monday 3/13/95

I am waiting for Ed to come over to my trench now, and really am pretty much done w/ my structure (in terms of uncovering it). There are a few areas that could be cleaned up, for example, the NE corner of the BRAZIL-CHINA structure. To kill time while waiting for Ed, I'm having my workers clean out this area. It will be called:

Lot 55M/21

Pottery sherds, baja reque

Now also in OPSSM, we are going to excavate one meter in front of TIBET ^{to the EAST} (into the BRAZIL-CHINA structure) all the way across, down 0cm → 20cm.

This will be LOT 55M/22.

Pottery sherds,

Baja reque, obsidian, bones, shell

We have also found several fragments that fit together from the same painted jar. They will be bagged separately.

Tuesday 3/14/95

Today we are simply continuing down in the meter area in front of TIBET.

Yesterday we found about 20 pieces to the same bowl, about 8 of which definitely fit together. They are all painted.

Lot 55M/23 will be in the meter-wide length of the BRAZIL-CHINA (160cm) structure, directly in front of TIBET;
20cm \rightarrow ~~40cm~~ 25cm (to floor)
Pottery sherds

(to east of TIBET)

We have found a floor, so now I am taking out the rest of the interior of (90cm width) the BRAZIL-CHINA structure down by 160cm) to the floor.

Lot 55M/24 is down to 25cm (floor)
Pottery sherds, baja reque, obsidian shell

Wednesday 3/15/95 The Ides of March

(west of TIBET)

Today we are starting by taking the rest of the BRAZIL-CHINA structure down to the floor level, ~~leaving~~ leaving TIBET in place.

Lot 55M/25 will be this area (1m by 160cm)
Pottery sherds, mano fragment, baja reque obsidian

There is no continuation of the floor, therefore the meter area west of TIBET was prob. higher & filled in w/ dirt.

55M/26
(# 21 21/2)

P95/#75
p. 45

Thursday 3/16/95

Today we started off by cleaning the small rocks and tumble off of the terrace. The sherds, baja reque, obsidian, and bone found here will be LOT 55L/29.

There are a cluster of stacked rocks that come off of JAPAN. It is just as high as JAPAN and goes out about a foot and a half. This feature will be called HOLLAND.

Also, in the very corner of Square #3 in OP 55L, there are four large rocks on the 60cm level floor of the trench that seem to be part of an earlier structure. This feature of my operation will be called SWEDEN.

We are going to continue in the meter wide area (by 160cm) on the western side of TIBET in the BRAZIL-CHINA structure. We did not find a continuation of the floor we saw to the east of TIBET in the BRAZIL-CHINA structure. We are exploring further down to see if we might find an earlier floor or formation. We are taking it down 40cm more, in 20cm lots below the other floor level.

Lot 55M/26 will be the first 20cm lot. sherds, baja reque, shell, obsidian

Elizabeth Lowe

Thursday 3/16/95

We are continuing to excavate in the 1m by 160cm area west of TIBET in the BRAZIL-CHINA structure. We are going down to 40cm below the floor level; this will be lot 55M/27.
Sherds, baja reque, obsidian, shell

We have now pretty much completely uncovered all we need to concerning my structure. I am ready to begin taking my final notes on OPERATION 55, sub-ops B, F, I, L, M, W.
(East of TIBET)

The floor in the Eastern part of the BRAZIL-CHINA structure will be named INDIA.

Monday 3/20/95

We are going to dig a bit more in front of FRANCE to see where it stops (how big the basal step is). Any sherds, etc. found here will be lot 55P/13. We are excavating back to Square #1, 60cm; going down 10cm more.

(P. 01)

Excavation Outline & Final Notes on
Operation 55 La Sierra
Sub-Operations B, F, I, L, M, and W

FRIDAY

3/17/95

The southernmost wall of the BRAZIL-CHINA structure is oriented S 50° E. It is 390 cm long.

It's height on the outside ranges from 40cm to 60cm. Inside, this wall is 40cm above INDIA (floor).

The width of this wall ranges from 40cm to 50cm.

Throughout my final notes, I will describe walls that are built w/ four different sizes of rocks: very small, small, medium, and large. Their ranges:

Very small: 5cm-10cm (and smaller)

Small: 10cm-20cm

Medium: 20cm-30cm

Large: 30cm and larger.

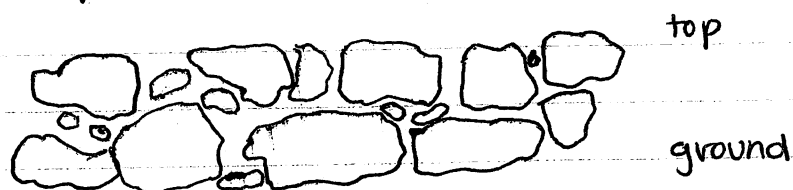
This southernmost wall of BRAZIL-CHINA structure is made up mostly of large rocks. It runs two courses high, and three courses high west of TIBET only. There are very small chinking stones present at some places in the wall, but more abundant is just simply packed dirt. Horizontally, this wall is two rocks wide; a consistent row of large rocks makes up the outermost part, while the inside row consists of small rocks. An exception is the part

3/17/95 Final Notes (cont) (p.02)

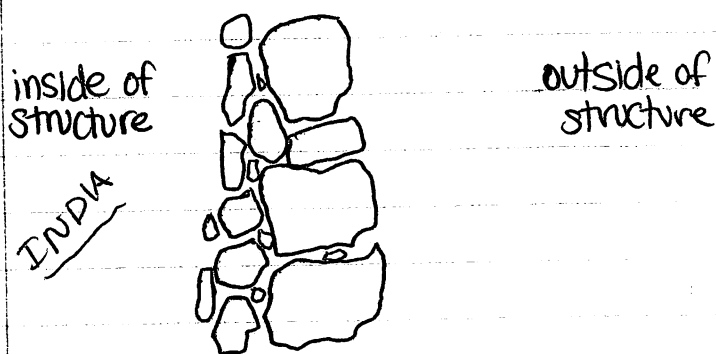
of the wall that is west of TIBET. Here, the wall is still two stones thick, but both are large stones. All of the stones forming this southernmost wall of BRAZIL-CHINA are river cobbles. For the most part, they are laid out in regular and consistent courses.

To the west, TIBET does not seem to intersect this wall. To the east, this wall seems to merge with the easternmost wall of the BRAZIL-CHINA structure.

View from the outside:



View from the top:



The wall does not seem to go below the floor of INDIA.

3/17/95 Final Notes cont (p.03)

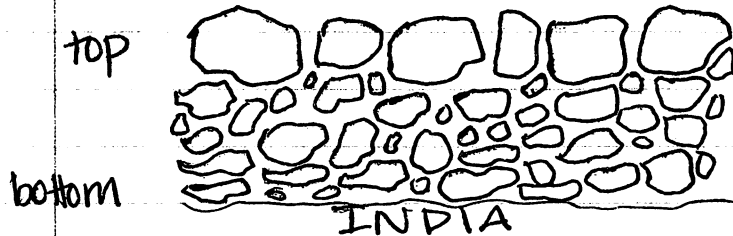
I shall now describe the easternmost wall of the BRAZIL-CHINA structure. Its orientation is $N 40^{\circ}E$. Outside, its height ranges from 60cm to 65cm. Inside, the wall rises 45cm to 55cm above the floor, INDIA. The width of this wall ranges from 25cm to 30 cm. It is 250 cm long.

This wall consists of medium and large rocks on the top throughout the bottom outside, chinked with small and very small stones. On the inside, there are medium to large rocks on top, with small to very small stones on the bottom layers.

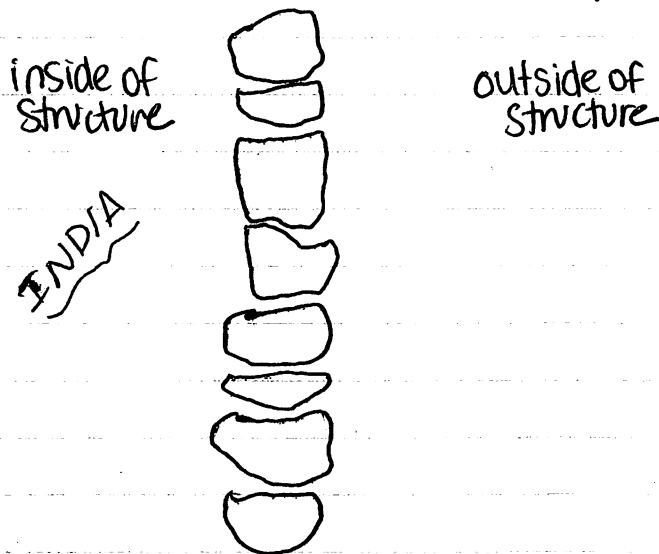
The width of the wall is one rock (medium to large) wide. On the inside, vertically, there are no very distinct courses, but generally I would say there are about 4 general levels of stones. On the outside-facing, there are also basically four courses, more distinct and all with medium to large stones. All the rocks used appear to be river cobbles. On both the north and south sides, this easternmost wall of BRAZIL-CHINA seems to integrate w/ the northernmost and southernmost walls. The wall does not seem to go below INDIA.

3/17/95 Final Notes (on't (p.04)

Sketch from the inside; vertically:



~~view~~ view from the top:

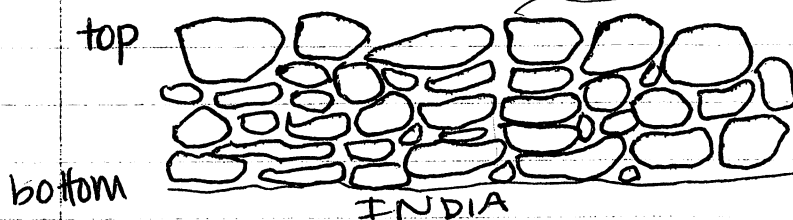


Now I shall describe the northernmost wall of the BRAZIL-CHINA structure. Its orientation is $S 48^{\circ} E$. Its height is approximately 50cm everywhere, give or take a few centimeters. I am measuring the height from the inside, down to INDIA, since the outside is abutted by a terrace. Its width ranges from 50cm to 60cm, the wider part being west of TIBET, similar to the parallel southernmost wall. It is 400 cm long.

3/17/95 Final Notes Con't (p.05)

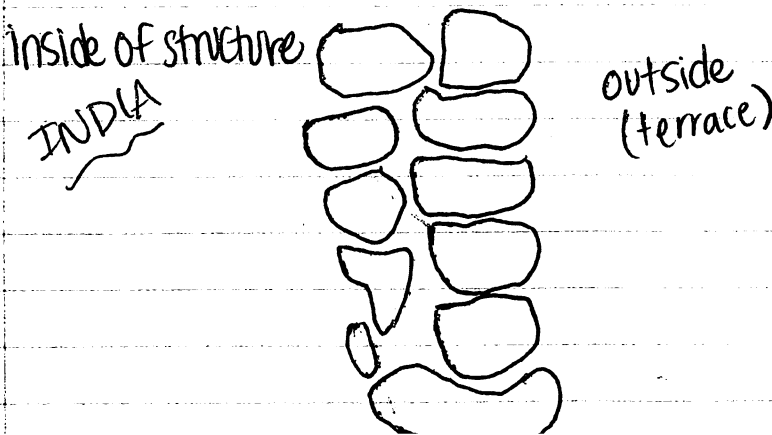
This northernmost wall of the BRAZIL-CHINA structure is made up of large, medium, small, and very few very small rocks used as chunking stones. There are mostly large rocks on top, a few a little smaller than 30 cm. The wall is two rocks wide. Vertically, there are medium to small rocks about four courses high (fairly distinct courses) with a top course of large rocks (Five courses high). The wall does not appear to go below INDIA. On the east, it appears to integrate with the easternmost wall. Although difficult to say for sure, this wall doesn't appear to integrate with TIBET. All the stones used are river cobbles.

View from inside structure:



Break in construction?
(9/3/14)

View from top:



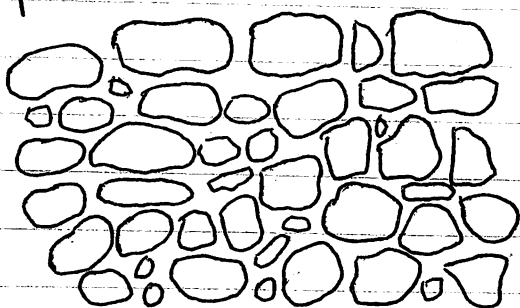
3/17/95 Final Notes Con't (p. 06)

I shall now describe the westernmost wall of the BRAZIL-CHINA structure. Its orientation is $N40^{\circ}E$. Its height, measured from the inside (because it is very clear where the wall stops) ranges from 60cm to 70cm. Its width ranges from 50cm to 65cm. It is 260cm long.

This wall consists of small, medium, and large rocks, all of which are river cobbles. The largest rocks are mostly on top. The wall is approximately six courses high, and two stones wide (the outermost stones being large; the innermost stones being medium to small). This wall fully integrates with the southernmost and northernmost walls, suggesting that the BRAZIL-CHINA structure (all four walls) are contemporary. The floor, INDIA, is not present to the west of TIBET, so the rocks at the bottom simply rest on dirt.

view from inside:

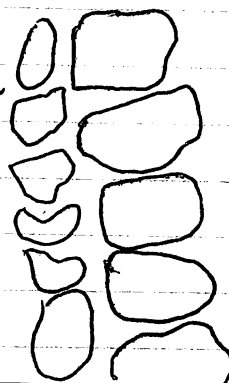
top



bottom

view from top:

inside
of structure



outside of
structure

3/17/95 Final Notes Con't (p.07)

I shall now describe TIBET, which is a wall parallel to the west + east walls of the BRAZIL-CHINA structure. It lies one meter (approximately) from the westernmost wall, and 1m, 90cm (app.) in from the easternmost wall. It spans the width of the BRAZIL-CHINA structure (app. 160cm across the interior), touching and perpendicular to the northernmost and southernmost walls. It is 160cm long

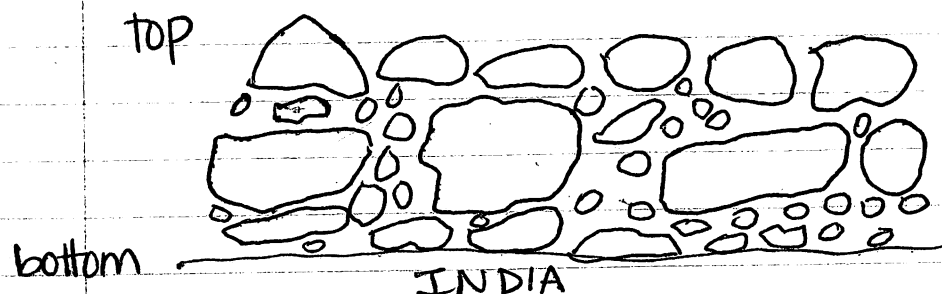
Its orientation is N40°E. Its height, from INDIA, ranges from 50cm to 65cm. Its width ranges from 35cm to 45cm.

TIBET is made up of Large, medium, small, and several very small rocks used as chinking stones. All appear to be river cobbles. TIBET does not appear to integrate w/ very much of the BRAZIL-CHINA structure, suggesting it was added later, although it is difficult to say for sure, and it could be quite possible that it was built simultaneously.

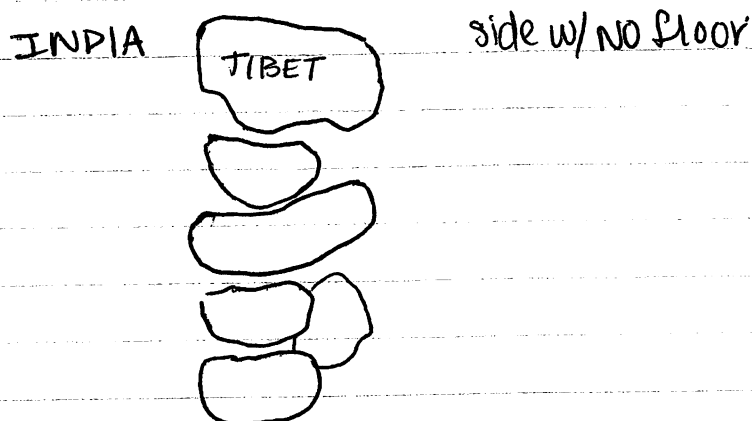
TIBET is roughly three courses tall, with medium stones on the bottom layer, large stones on the top and middle layers, and an abundance of very small stones used for chinking stones throughout the entire wall. TIBET is one rock wide, all of which are large rocks.

3/17/95 Final Notes Con't (p.08)

View from inside BRAZIL-CHINA structure :



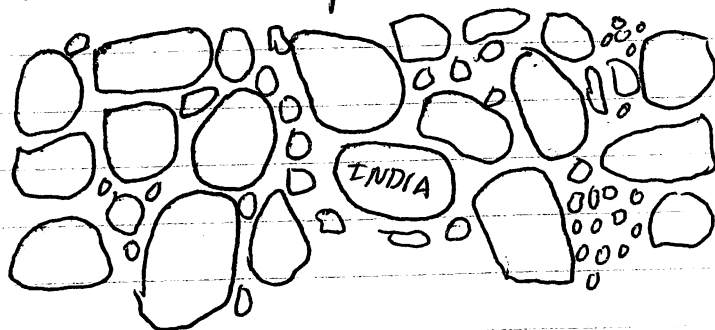
View from top:



I shall now describe the floor, INDIA. Its dimensions are 190cm by 160cm. It is generally flat, consisting of large stones that make the majority of the floor, and medium, small, and very small stones to fill in the spaces. All of the stones appear to be river cobbles. It was probably laid down first, and then had the BRAZIL-CHINA structure laid on top of it. It is very well constructed.

3/17/95 Final Notes Con't (p.09)

A sketch of part of the INDIA floor:



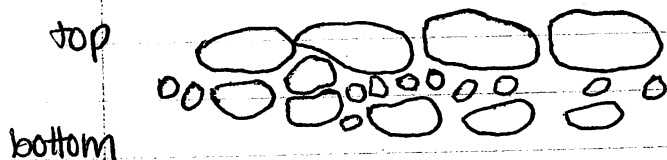
[SW corner]
& NW corner

I shall now describe the feature JAPAN, which is a wall that extends from the westernmost wall of the BRAZIL-CHINA structure. It forms the western perimeter of the terraced platform that extends from the BRAZIL-CHINA structure to the NE. Its orientation is also N.40°E. Its height is approximately 30-35cm high. Its width is in the range of 25cm-30cm. It is 210 cm long. It is made up of medium, small and very small rocks. It is three courses tall and one stone wide. There is a very distinct row of medium-sized stones forming the top course and making up the width of JAPAN. The bottom two courses are small rocks with very small rocks used as chinking stones. JAPAN integrates with the BRAZIL-CHINA structure. It is not exactly in line w/ the westernmost wall; it is one stone out from it.

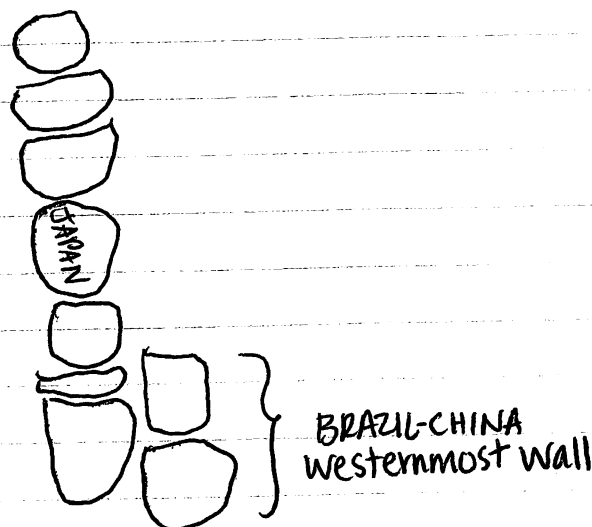
Japan

3/17/95 Final Notes (cont. (p.10)

View from the outside of the terrace:

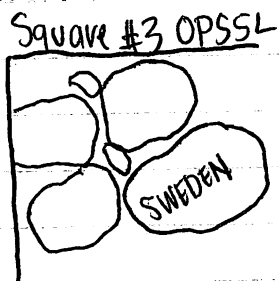


view from above:



In the corner of Square #3 in Operation 55L, we found two large and two medium rocks, with a few very small rocks used in the middle, that is probably part of an earlier structure, since it is 60cm below ground level. If it is part of a wall, that wall would be oriented S70°E. This feature is named SWEDEN.

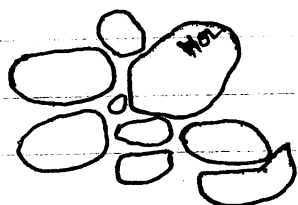
Sketch:



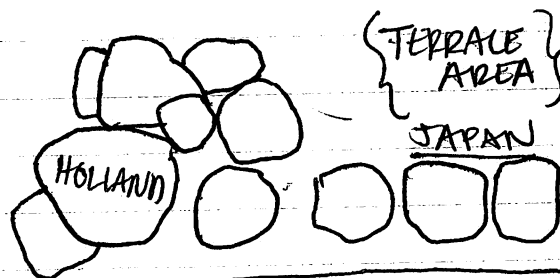
3/17/95 Final Notes Con't (p.u)

Extending out from JAPAN is a feature I have named HOLLAND. It is wider than JAPAN; its width is 60cm. It stands approximately 43cm tall. It is made up of large, medium, and small rocks, all together. Although there are no obvious courses, I would describe HOLLAND as being three courses tall and three stones wide. All of the stones that form HOLLAND are river cobbles. Since it extends off of JAPAN, it shares the same orientation of N40°E.

Sketch from head on:



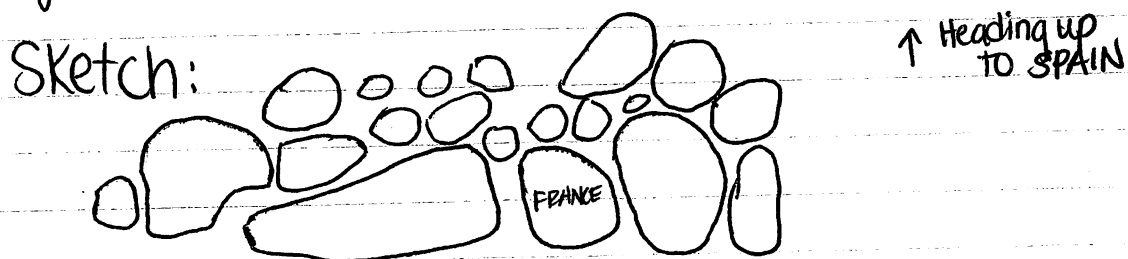
Sketch from above:



I will now begin to describe the steps that come out from the platform in front of the BRAZIL-CHINA structure. They are called FRANCE, SPAIN, and ITALY in ascending order. I will start with the Lowest step, FRANCE. It is very wide, with 70cm between the beginning of the step and SPAIN. FRANCE is also ~~wider~~ longer than SPAIN and ITALY. It runs approximately 170cm long.

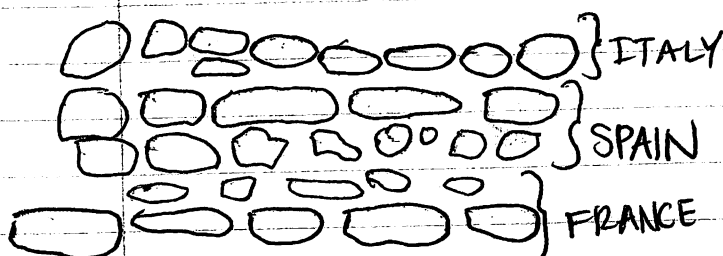
3/17/95 Final Notes (cont (p.12)

The rocks that form the step of FRANCE are anywhere from 5cm to 15cm off of the excavation floor, which is 60cm below ground level. FRANCE's orientation is S50° E. It consists of all sizes of stones, large, medium, small, and very small. All are river cobbles.



SPAIN rises approximately 30 cm up from the trench floor (60cm below ground level), and about 20-25 cm up from the level of FRANCE. SPAIN extends back approximately 45-48 cm back to where ITALY begins. SPAIN is 140cm long; its orientation is S50° E also. Again, like FRANCE, it consists of river cobbles. It is two courses tall.

Sketch from head on:



Sketch from above:

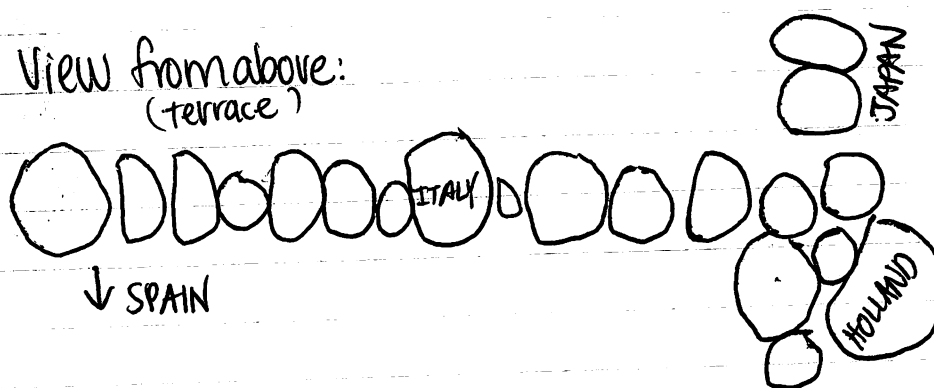


SPAIN consists of large, medium, small and very small rocks.

3/17/95 Final Notes Con't (p.13)

ITALY is the step which is at the same level of the terrace in front of the BRAZIL-CHINA structure. It is also oriented S50°E. ITALY rises 20cm above SPAIN and about 50cm off of the ~~the~~ trench floor (60cm below ground level). It is made up of small to medium river cobbles, and is one stone wide, and approximately two courses tall. It extends to the east as far as SPAIN. However, to the west, it extends to form a corner with JAPAN; integrating also with HOLLAND. It is 270cm long.

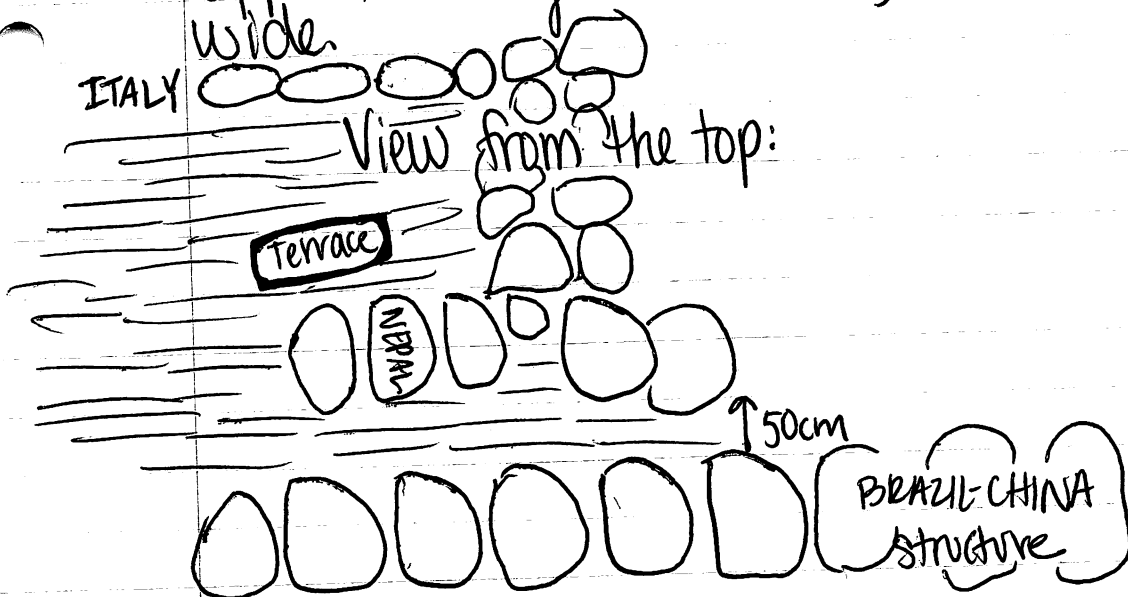
View from above:
(terrace)



The terraced platform extends back 135cm to the BRAZIL-CHINA structure and 280cm across.

3/17/95 Final Notes Con't (p.14)

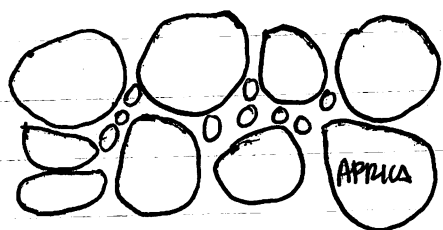
Now I will describe NEPAL, which was a feature I named very early on. It comes out 50cm from the BRAZIL-CHINA structure and is parallel to FRANCE, SPAIN, and ITALY; therefore its orientation is also S50°E. It consists of medium-sized river cobbles (+ one large river cobble) If perhaps was a step that was destroyed or never finished. In the structure as it looks today, NEPAL is not significantly important, but it is still a feature of the structure. It is approximately 100cm long and one stone wide.



3/17/95 Final Notes Con't (p.15)

Similar to SWEDEN, there is another feature in my trench that seems to be of an earlier construction. It is called AFRICA. It lies in Squares #2, 3, and 4 of Operation 55B. Its orientation is S40°E. It consists of large and medium river cobbles, with very small stones used in the middle, very similar to SWEDEN. It is two rocks wide, approximately 55cm wide. It also rests on the trench floor (60cm below ground)

Sketch from above:



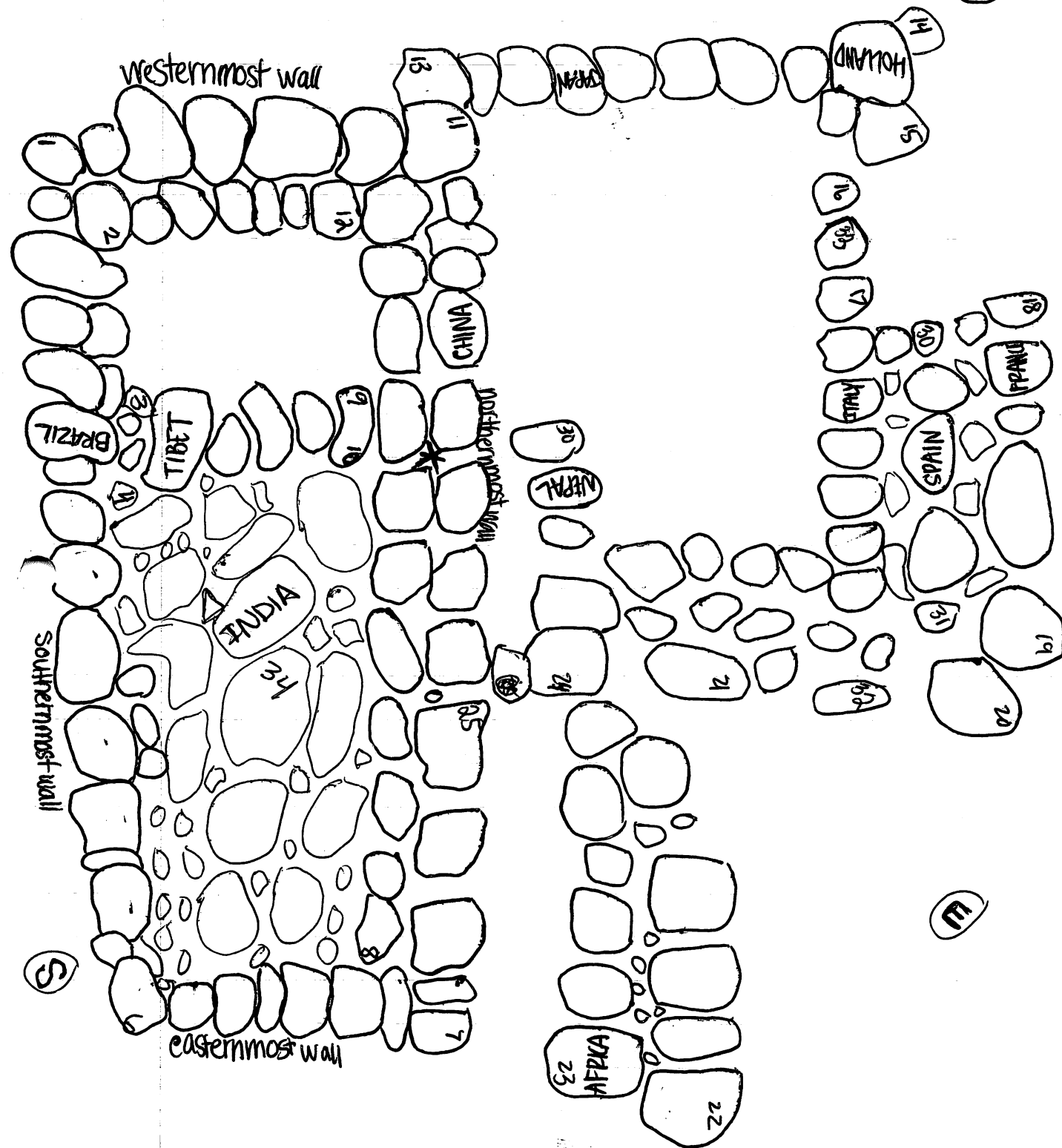
Monday 3/20/95 Final Notes (con't (p.16)

I will now make some general statements about my entire structure. I believe the entrance to the BRAZIL-CHINA structure was most likely to the NE of the northernmost wall (of BRAZIL-CHINA), since that is where the level platform and the steps of FRANCE, SPAIN, & ITALY are. I believe the entrance was to the west of TIBET, in that meter long area. Since we did not find a floor in this area, I think we took out the fill to some sort of bench that was about at the level of entry. My structure is facing the Northeast. I also believe it was a structure used for residing in, because it is mainly one large room. We found an abundance of pottery, but not too many figurines/ocarinas, so it probably wasn't a storage facility. In general, mine is a pretty straightforward structure: three steps leading up to a terrace in front of (to the NE) of a rectangular structure, probably a domestic one.

(4)

Overhead Vantage

(2)



* DATUM

3/20/95
Final Notes Con't (p. 18)

Datum Information

Base of southernmost BRAZIL-CHINA wall : 66 cm below datum
Top " " " " : ~~40~~ 26 cm " "

Base of easternmost BRAZIL-CHINA wall : 87 cm b.d.
Top " " " " : 27 " " "

Base of northernmost BRAZIL-CHINA wall : 63 cm b.d.
Top " " " " : 13 cm " "

Base of westernmost BRAZIL-CHINA wall : 76 cm b.d.
Top " " " " : 2 cm " "

Base of TIBET : 74 cm below datum
Top " " : 13 " "

Floor of INDIA : 71 cm below datum

Base of JAPAN : 73 cm below datum
Top " " : 38 " "

SWEDEN : 70 cm below datum

Base of HOLLAND : 74 cm below datum
Top " " : 31 cm " "

3/20/95 Final Notes Con't (p.19)

Datum Information Con't

Base of FRANCE : ⁹²~~86~~ cm below datum
Top " " : 70 cm "

Base of SPAIN : 71 cm below datum
Top " " : 46 cm "

Base of ITALY : 50 cm below datum
Top " " : 35 cm "

NEPAL: 33 cm below datum

AFRICA: 70 cm below datum

3/20/95 Final Notes Cont (p.20)

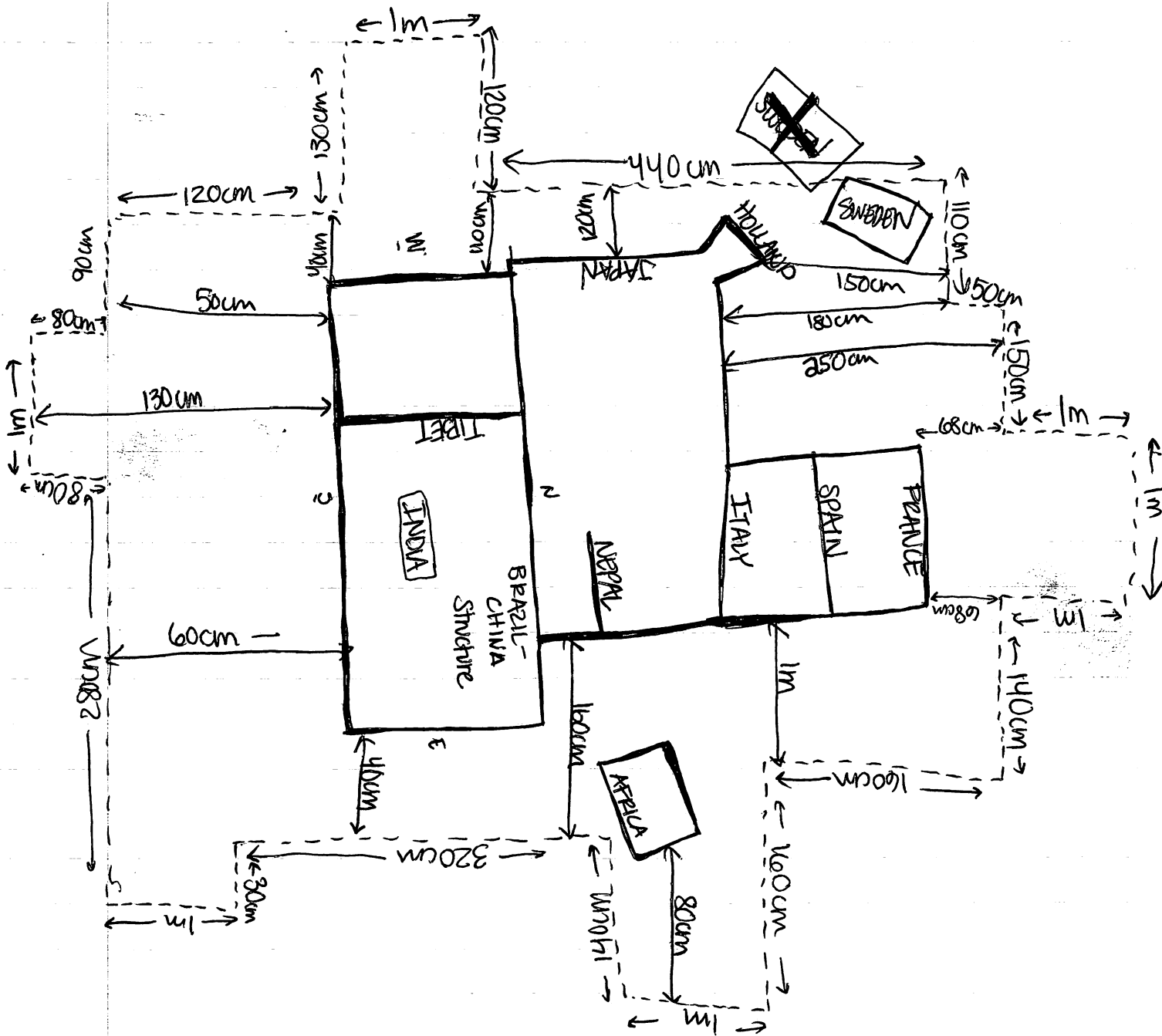
Soil Changes in relation to Datum

Taken from Square #1 of OP55F

- "A" - 25cm below datum (ground level) to approximately 46cm below datum
 - Moderately hard, dark brown, moderately fine humus.
- "B" - 46cm b.d. to 63cm b.d.
 - Moderately hard, brown, moderately fine soil with numerous rocks and sherds
- "C" - 63cm b.d. to 88cm b.d.
 - Moderately soft, tan, fine soil; sherds
- "D" - 88cm b.d. to 106cm b.d.
 - Same as "C" except harder and finer - more like ash
- "E" - 106cm b.d. to 113 b.d.
 - Hard tan clay with sand inclusion
- "F" - 113 b.d. to 119 b.d. (floor of Sq. #1, OP55F)
 - Moderately soft, red-brown, fine-grained sand, continuing up in some locations in narrow intrusions into "E"

3/23/95 Final Notes (on't (p21)

not drawn to scale



LOTS

OPERATION
55

OP 55B

P95
#75

LOTS p.1

OP 55B
ID # 75

- 01- Surface Collection - sherds of pottery
02- 1st 10 cm on easternmost corner lot
in square #1 0-10 cm
pottery sherds
03- Square #1 10cm → 20cm
pottery sherds obsidian fragments
matate fragment + mano piece
04- Square #1 20cm → 30cm
pottery sherds
05- Square #1 30cm → 40cm
pottery sherds
obsidian
shell fragments
06- Square #1 40cm → 50cm
pottery sherds
obsidian
shell fragments
bajareque
07 - Square #2 0cm → 10cm
pottery sherds
08 - Square #2 1st 1/2 down 10cm → 25cm
pottery sherds bajareque
obsidian
Chalk (not worked - naturally
occurring limestone)
stone tool
09- Square #2 25cm → ~~50~~ 50cm
working inwards from square #1
25cm into square #2
pottery sherds

OP 553

P95
#75

LOTS p.2

- 10 - Square #2 ; 25cm \Rightarrow 60cm in from square #1 ; 50 cm in from NE side to end of square #2 on SE side; and 25cm \Rightarrow ~~50~~ cm down.
pottery sherds 40
- 11 - Square #2
10cm \Rightarrow 40cm down; 60cm in from square #1 ; and 50cm over from the NE side of square #2.
pottery sherds + baja reque obsidian
- 12 - Square #2
25 - ~~40~~ 50cm down
1st 50cm over from NE side
pottery sherds
obsidian
baja reque
- 13 - Square #2
50cm \Rightarrow 60cm
pottery sherds
ocharina
- 14 - Square #3 0cm \Rightarrow ~~20~~ 30cm
also 30cm into Square #4
pottery sherds baja reque
obsidian matate leg
shell
- 15 - Squares #1 + #2
4-5 cm around AFRICA + EGYPT
pottery sherds; baja reque

LOTS p.3

16 - Square #8 0cm \rightarrow 20cm
pottery sherds bone
obsidian baja reque

17 - Square #8 20cm \rightarrow 30cm
pot sherds, baja reque, obsidian

18 - Square #8 30cm \rightarrow 40cm
pot sherds obsidian
ocharina baja reque

19 - Square #8 40cm \rightarrow 60cm
pot sherds obsidian
shell bone

20 - Square #7 0cm \rightarrow 20cm
part of ocharina baja reque
pot sherds, bones Obsidian
baja reque

21 - Square #4 30cm in from Square #3
0cm \rightarrow 30cm working back to Square #5
pot sherds all the way
baja reque

22 - Square #3 30cm \rightarrow 40cm
pottery sherds
and Square #4 30cm \rightarrow 40cm

23 - Square #7 20cm \rightarrow 40cm
pottery sherds, baja reque, obsidian

24 - Square #5 0cm \rightarrow 40cm - only in front of wall
around possible wall - CHINA (possible summit)
pot sherds baja reque \rightarrow and on top of CHINA

25 - Square #3 40cm \rightarrow 60cm
only in front of NEPAL. pottery sherds
baja reque candle holder matafe leg

LOTS p.4

~~XXXXXX~~

55P/01 - Square #1 0cm \rightarrow 20cm
obsidian pottery sherds
baja reque

55B/26 - donut stone

55B/27 - Square #6
0cm - ~20cm pottery sherds
bones
to expose more of CHINA baja reque

55P/02 - Square #1
20cm \rightarrow 40cm
pot sherds obsidian
baja reque

55P/03 - Square #1 40cm \rightarrow 60cm
pot sherds baja reque rodent teeth
obsidian "candelero"

55I/01 - Square #1 0cm \rightarrow 20cm
pot sherds baja reque
bones

55P/04 - Square #2
0cm \rightarrow 20cm pot sherds, bones, baja reque

55I/02 - Square #1 20cm \rightarrow 40cm
pot sherds

LOTS p.5

55B/05 - Square #2
20cm \rightarrow 40cm

pot sherds
baja reque

55B/06 - Square #2
40cm \rightarrow 60cm

pottery sherds obsidian
ocarina baja reque

55I/03 - Square #1
40cm \rightarrow 60cm

pot sherds, candelerio, baja reque

55F/07 - Square #3 0cm \rightarrow 20cm
pot sherds, obsidian

55F/08 - Square #3 20cm - 40cm
pottery sherds

55I/04 - Square #2 0cm - 30cm
pottery sherds, baja reque, matate piece
stamp

55F/09 - Square #3 40-60cm
in front of wall
pottery sherds, obsidian

55F/10 - Square #4 0cm \rightarrow 30cm
pot sherds

LOTS p. 6

55I/05 - Square #3 0cm \rightarrow 30cm
pottery sherds, matate piece

55B/28 - Square #6 to clear back to
NW corner of CHINA,
pottery sherds

55F/11 - Square #4 cleared back from ITALY
10 cm to clear tumbled rocks
obsidian pot sherds
baja reque

55L/01 - Square #1 0cm \rightarrow 20cm
pottery sherds, baja reque

55M/01 - Square #1 0cm \rightarrow ⁴⁰~~20~~cm
pottery sherds carina piece
obsidian baja reque

55L/02 - Square #1 20cm - 40cm
pottery sherds pink chalk
baja reque

55M/02 - Square #1 40cm \rightarrow 60cm
in front of BRAZIL,
pot sherds baja reque
obsidian

LOTS p.7

55L/03 - Square #1 40cm \rightarrow 60cm
pottery sherds baja reque
mano piece

55M/03 - Square #2 0cm \rightarrow 20cm
pottery sherds baja reque mano piece

~~55L/04 - Square #2 0cm \rightarrow 20cm~~

55L/04 - Square #2 0cm \rightarrow 20cm
pottery sherds, cow teeth, ocarina

55M/04 - Square #2 20cm - 40cm
pottery sherds obsidian
candelero cup bottom
baja reque

55L/05 - Square #2 20cm \rightarrow 40cm
Pottery sherds obsidian
baja reque cow bones

55M/05 - Square #2 40cm \rightarrow 60cm
Pottery sherds mano
censer fragment pottery leg
baja reque

LOTS p.8

554/06 - Square #3 0cm \rightarrow 20cm
pottery sherds

55M/06 - Bulk bet. 55I + 55M
to uncover BRAZIL.
pottery sherds, baja requé, ocarina

55M/07 - Square #3 0cm \rightarrow 80cm
pottery sherds
baja requé 60

554/07 - Square #3 20cm \rightarrow 40cm
pottery sherds obsidian
baja requé cow bones

554/08 - Square #4 0cm \rightarrow 40cm
pottery sherds, obsidian, cow
bone

55M/08 - Square #4 0cm \rightarrow 60cm around SE corner
pottery sherds figurine head OF BRAZIL
metate fragment baja requé obsidian shell
cow bones fragment

554/09 - Squares #1 + #2 ~5cm
around FRANCE
pottery sherds, candelero
baja requé

LOTS p.9

55L/10 - Square #5 0cm → 20cm
pottery sherds, obsidian, baja reqre

55M/09 - Square #5 0cm → 20cm
pottery sherds, baja reqre

55L/11 - Square #6 0cm → 20cm
pottery sherds obsidian
bone baja reqre

55M/10 - Square #6 0cm → 20cm
pottery sherds baja reqre
obsidian
candelero

55M/11 - Square #6 20cm → 40cm
pottery sherds obsidian
baja reqre pendant
metate leg

55L/12 - 0cm → 30cm
bulk bet. Square #6 + OP55F

55M/12 - Square #7 0cm → ~~20cm~~ 100cm
pottery sherds, baja reqre, obsidian
pottery sherds baja reqre
candelero obsidian

LOTS p.10

55L/13 - Bulk bet. Square #5 and OP 55F.
0cm \Rightarrow 30cm
Pottery sherds

55L/14 - Bulk bet. Square #2 and OP 55F
pottery sherds, baja reque

55M/13 - Square #8
to uncover NE corner of BRAZIL
pottery sherds, baja reque, metate leg fragment

55L/15 - Bulk bet. Square #1 and OP 55F
pottery sherds, obsidian

55L/16 - Square #2 10cm more on top of FRANCE
pottery sherds, obsidian

55M/14 - Bulk between Squares #4 + #6
0cm \Rightarrow 40cm
Pottery sherds, baja reque, metate leg

55L/17 - Square #7 0cm \Rightarrow 20cm
pottery sherds, obsidian, baja reque

55M/15 - Bulk between Squares #5 and #7
0cm \Rightarrow 40cm
Pottery sherds, obsidian, baja reque
stone ball

55L/18 - Squares #1 and #2 to clean for
corners for FRANCE + SPAIN
Pottery sherds, baja reque, obsidian

LOTS p. 11

p95
#75

55M/16 - Square #5; 10cm \Rightarrow 40cm
Pottery sherds, baja reque, obsidian

55L/19 - Square #2; 40cm \Rightarrow 60cm
Pottery sherds, baja reque,
obsidian, figurine fragment

55L/20 - Square #3 40cm \Rightarrow 60cm
Pottery sherds, metate leg, Baja reque
NE shell

55M/17 - Clearing corner of BRAZIL-CHINA
Structure + will connect 55M to 55B.
Pottery sherds, Baja reque, candelero

55M/18 - SW corner of BRAZIL-CHINA structure
0cm \Rightarrow 60cm donut stone figurine
Pottery sherds, ~~obsidian~~ fragment
obsidian baja reque

55L/21 - Squares #2 + #4 down to 60cm
except corner in Square #2
Pottery sherds, baja reque, obsidian

55L/22 - Square #7 20cm \Rightarrow 60cm
pottery sherds, baja reque,
metate leg, metate fragment
obsidian, pendant

55W/01 - Square #1 0cm \Rightarrow ⁴⁰cm
Pottery sherds, obsidian, baja reque

LOTS p.12

55W/02 - Square #1 : 40cm \rightarrow 60cm
Pottery sherds

55L/23 - Square #8 : 0cm \rightarrow 20cm
Pottery sherds
Baja requé

55W/03 - Bulk between OPS 55F and 55W
0cm \rightarrow 60cm
Pottery sherds, obsidian

55L/24 - Square #8 20cm \rightarrow 40cm figurine
Pottery sherds, obsidian, fragment
~~by~~ baja requé

55W/04 - Square #2 0cm \rightarrow 20cm
Pottery sherds, obsidian, shell.

55W/05 - Square #2 ^{and bulk to 55B} 20cm \rightarrow 60cm
around corners of FRANCE, SPAIN, & ITALY
pottery sherds, baja requé

55L/25 - Square #5 around cluster of rocks
trying to find wall back to CHINA
pottery sherds, obsidian

55M/19 - corner of NEPAL back to BRAZIL-CHINA
structure down to 40cm
pottery sherds

LOTS p.13

55W/06 - Bulk between Square #1 and OP55B
0cm \rightarrow 60cm
Pottery sherds, obsidian

55L/26 - Bulk between Square #8 and OP55B
0cm \rightarrow 40cm
Pottery sherds, baja reque, ~~obsidian~~ obsidian
metate leg + fragments, figurine fragment

55W/07 - Square #2 down to ~65cm
to follow APRICA
pottery sherds, obsidian, baja reque

55F/12 - Square #1 60cm \rightarrow 100cm (STERILE)
down to sterile soil
Pottery sherds, obsidian, shell, baja reque
carbon

55L/27 - area in front of JAPAN down to 60cm
Pottery sherds, baja reque, bones
obsidian

55L/28 - area where JAPAN meets CHINA
pottery sherds, baja reque, obsidian, cardelero,
bones, shell

55M/20 - corner of steps (FRANCE, SPAIN, ITALY + NEPAL)
meet CHINA
Pottery sherds, Baja reque, obsidian

LOTS p.14

55M/21- cleaning around the NE corner of
BRAZIL-CHINA structure
Pottery sherds, baja reque

55M/22- one meter out from TIBET into the ^(all the way across)
BRAZIL-CHINA structure; 0cm \Rightarrow 20cm
Pottery sherds, baja reque, obsidian, bones,
many frags to same painted jar, shell

55M/23- one meter out from TIBET into the
^(160cm across) BRAZIL-CHINA structure; 20cm \Rightarrow 40cm
Pottery sherds (FLOOR) 25

55M/24- The rest of the interior of the ^(in front of TIBET)
BRAZIL-CHINA structure (90cm by 160cm)
down to the floor (25cm).
Pottery sherds, baja reque, obsidian
shell, worked bone

55M/25- The rest of BRAZIL-CHINA structure down ^(west of TIBET)
to the floor (1m by 160cm)
Pottery sherds, mano fragment, baja reque
~~obsidian~~ obsidian

55M/26- 20cm below floor level, west of TIBET, in ^(1m by 160cm)
the BRAZIL-CHINA structure
sherds, baja reque, shell, obsidian

55L/29 - cleaned 5cm on CHINA-BRAZIL terrace
sherds, baja reque, bones, obsidian

Lots p.15

55M/27 - down to 40cm below floor level
 1m by 160cm west of TIBET in the
 BRAZIL-CHINA structure
 sherds, baya reque, obsidian, shell

55F/13 - the area in front of FRANCE, back
 60cm to Square #1 and down ~10cm
 in front of its basal step stones
 Sherds

23 March 95

Elizabeth Laine #75
Structure 79 OP55B,F,I,L,M,W

		<	MID	DIST
1	SW Brazil-China Exterior	✓ 216°	2069	12.74
2	SW Brazil-China Interior	✓ 213°45'	2068	12.32
3	SW Tibet/Brazil-China Interior Junction	✓ 210°30'	2135	12.40
4	SE Tibet/Brazil-China Interior Junction	✓ 208°30'	2201	12.49
5	SE Brazil-China Interior	✓ 200°30'	2260	13.04
6	SE Brazil-China Exterior	✓ 200°	2335	13.48
7	NE Brazil-China Exterior	✓ 195°15'	2233	11.20
8	NE Brazil-China Interior	✓ 197°15'	2190	11.47
9	NW Tibet/Brazil-China Interior Junction	✓ 208°30'	2180	11.02
10	NE Tibet/Brazil-China Interior Junction	✓ 206°45'	1992	10.97
11	NW Brazil-China Exterior	✓ 215°30'	1974	10.22
12	NW Brazil-China Interior	✓ 213°	1848	10.73
13	NW pt. of Japan	✓ 216°30'	2226	10.40
14	NW on Holland	196 216°	2421	08.03
15	NE on Holland	15 211°45'	2421	08.01
16	Holland corners w/ Italy	16 211°45'	2428	08.45
17	Italy - SW corner of steps	17 207°30'	2291	08.70
18	France - NW corner of steps	18 206°15'	2609	07.58
19	France - First NE corner of steps	19 195°20'	2568	07.98
20	France - Second NE corner of steps	20 195°	2632	08.32
21	corner - steps to Africa	21 198°15'	2498	09.17
22	NE corner - Africa	22 188°30'	2652	10.02
23	SE corner - Africa	23 190°45'	2551	10.20
24	Africa - Nepal/Brazil-China NE junction	24 201°	2146	10.49
25	Nepal/Brazil-China SE junction	25 201°	2043	10.68
26	SW Sweden	26 220°15'	2566	07.57
27	SE Sweden	27 221°30'	2561	07.17
28	NE Sweden	28 224°45'	2540	07.41
29	NW Sweden	29 224°30'	2567	07.66
30	Spain West	30 206°45'	2402	08.30
31	Spain East	31 198°	2277	08.62
32	Italy East	32 199°30'	2084	08.92
33	Italy West	33 216°30'	2250	08.44
34	India floor elevation	34	2502	

II
notes

Elizabeth Laine
OPERATION 46

Tuesday 3/28/95

1 José Rito Rivas
2 José Alfredo Ramirez
3 Jaime Trujillo
4 Lucio Lopez
5 Claudio Rivera
6 José Luis Cruz
7 Josef Pias
8 Josef

P95/#75
p.01 (II)

Today I am starting a new operation. I am working in the west group of la Sierra. Since this is an entirely different project, I am starting again with page 01, but all the pages for this operation 46 will be followed by (II) to denote my second project notes. I have chosen structures 187 and 188 to begin my investigations. Structure 188 is a little bit larger than my last project. Structure 187 is next to it, and a lot larger. I have nine workers today excavating, due to April being sick and Peter working on final notes. Therefore, I had them clean off both mounds, and I have set up two beginning axial trenches, one on each mound. On Structure 187, I have set up an eleven meter trench, and on 188, an ~~eight~~ nine meter trench. I have two workers on each end of each trench plus one extra. Tomorrow I will probably only have four workers, and I plan to excavate structure 187 first. The trench on Structure 187 is OP46A, and the trench on 188 is OP46B.

3/28/95

I am starting four different lots today:

OP46A/01 is in Square #1, 0cm \rightarrow 20cm
sherds, obsidian, chert

46A/02 is in Square #11, 0cm \rightarrow 20cm +
sherds, obsidian Square #10, 0cm \rightarrow 10cm

Found possible wall here - making Sq. #12 to
investigate further.

46B/01 is in Square #1, 0cm \rightarrow 20cm
sherds, baja reque, obsidian

46B/02 is in Square #8, 0cm \rightarrow 20cm
sherds, baja reque, shell

I am working w/ José Alfredo and José Rivas
~~Rito~~ again, and I have 2 new workers
also from Naco. Their names are Santiago
and Lucio. I have decided to add another
meter in OP46A. It now has 12 meters.
I added it to Square #11. There is a possible
wall in Square #11, so that is why I would
like an extra meter.

3/28/95

In OP 46B, I have started two new lots.

46B/03 is in Square #1, 20cm \Rightarrow 40cm
sherds, baja reque, obsidian, bone

46B/04 is in Square #8, 20cm \Rightarrow 40cm
sherds, baja reque

In OP46A, also two new lots:

46A/03 - Square #1 20cm \Rightarrow 40cm
sherds, baja reque, obsidian

46A/04 - Square #12, 0cm \Rightarrow 20cm
sherds, baja reque

I have set up a datum for OP46A and the rest of structure 187 next to Square #8 to the north.

46B/05 is in Square #1, ⁵⁰40cm \Rightarrow ~~60~~cm
sherds, baja reque, shell, obsidian

46B/06 is in Square #8, ⁵⁰40cm \Rightarrow ~~60~~cm
sherds, baja reque, metate leg

It is 50cm down only on the longest side (meter is on a slant)

Wednesday 3/29/95

Today I am starting off with four workers on **Structure 187**, two at either end. I am also starting two new lots:

46A/05 - in Square #1, 40cm \Rightarrow 60cm
sherds, baja reqre, obsidian (down to 155cm below datum)

also in Square #11, 20 cm \Rightarrow 60 cm
46A/06 - in Square #12, 20cm \Rightarrow ~~40~~ 60 cm } down to 205cm below datum (same level in each Square)
sherds, baja reqre, $\frac{1}{2}$ donut stone 60

We have found possibly a wall in Square #11, so we are just seeing if it goes down and digging farther down in Square #12.

I again have José Alfredo and José Rito Rivas working for me in Square #1. I have Lucio and Jaime in Square #12. Brett ended up taking Santiago to the quartz structures.

In Squares #10, 11, 12; there is a steep incline, so at one end of the trench it might be deeper than the other. I am therefore measuring from a datum to the level to where we are digging to - 205cm below datum. And in the other end of the trench, the floor of the meter trench is at 155cm below datum.

wednesday 3/29/95

There were no features to speak of found in Square #1, OP 46A. We went down to 60cm (155cm below datum). We are going to continue inwards towards the structure.

46A/07 will be in Square #2, 0cm \rightarrow 20cm. This side of the structure is not as steep, so it is easier to measure only from below ground surface. Sherds, baja reave

This trench, OP 46A, is oriented N33°W.

In Square #11, I have kept clearing away lots of rubble. Since this side of my structure is very steep, I have a lot of tumbled rocks. I have two very large rocks side by side, and although they are slanted, I am leaving them in for now. I am now digging in Square #10 down to the level of these rocks.

46A/08 - Square #10, to level of 2 large rocks in Square #1 (155cm below datum)
sherds, baja reave, obsidian, chert-like rock

Thursday 3/30/95

Today I am continuing down in Square #2, OP 46A. So far, we haven't found too much, possibly some sort of floor on the bottom of Square #1, but we'll see if we pick it up in Square #2.

46A / 09 - Square #2, ²⁰40cm - 40cm
sherds, baja reave, carbon

In Square #10, we are finishing up lot 46A/08. Again, there is a lot of tumble present. More sherds + baja found.

We are now going to continue up the mound into Square #9.

46A/10 - Square #9, 0cm → 20cm

In Square #2, I think we might have a wall. Therefore, next we are only going (only) to dig down to 60cm in front of it, closest to Square #1.

46A/11 - Square #2, 40cm → 60cm in front of possible wall. [SYDNEY]

It did not continue down.

sherds, baja, obsidian

3/30/95

SYDNEY did not continue down any farther in Square #2. Also, the floor in Square #1 ended up being nothing. We are now going to start to move into Square #3.

46A/12 is in Square #3, 0cm \rightarrow 20cm
sherds, baja reave, obsidian

We are continuing down also in Square #9. There is a lot of tumble still present all the way down.

46A/13 is in Square #9 down to 133cm below datum at another possible smaller wall than the one at 155cm below datum.
sherds, baja reave, shell

Now we are going down through all the tumble in Square #8, down to ¹¹³ the level of the possible wall, at ~~133~~cm below datum. This will be lot 46A/14.

sherds, baja reave
(many painted sherds to same jar)

We are going to continue down in Square #3, down to the level of SYDNEY.

46A/15 - Sq. #3 20cm \rightarrow 50cm (145cm below datum)
sherds, baja reave, obsidian, bone

Friday 3/31/95

Today we are starting ~~by~~ finishing up lots 46A/14 and 46A/15. In 14A/14, we found today many painted sherds belonging to the same jar and fitting together.

There are many rocks present on top of my mound, barely forming an outline of a rectangle. There are few rocks directly on the summit. So I possibly have a rough idea to the size & orientation of St. 187.

There is a third possible wall in the western end of my axial trench in Square #8. It is 113cm below datum. Therefore, we are only going down that far into Square #8.

We are now going to continue up the mound on the western side by beginning to excavate in Square #7, basically the ^{summit} meter.
46A/16 - square #7 sherds, baja
to 113cm below datum

Also, we are continuing up the eastern side to Square #4.

46A/17 - Square #4 0cm ⁵⁰~~20~~cm
sherds, baja

Monday 4/3/95

We are starting today by finishing lots 46A/16 and 46A/17. Hopefully I will get close to finishing my axial trench today - I have two more meters to go.

SYDNEY, the feature in Square #2, is possibly part of another structure. The flat parts of the rocks seem to face inward towards my mound rather than to the outside. When we follow it out, we will see.

The two large rocks in Square #11, I will call PARIS. The other two possible walls in the western part of my axial trench I will name later. They are very poorly preserved if they are indeed walls. It is possible that all the walls on the western side have mostly tumbled down since it is so steep.

In Square #7 we have found another wall, MILAN, 86cm below datum.

4/3/95

We are now starting to excavate in Square #6, starting lot 46A/18.

sherds, baja requre, obsidian, metate fragment

Also, we are starting to excavate in Square #5 to connect my axial trench in Structure 187.
46A/19 - Square #5 - 108cm below datum

sherds, baja requre, obsidian

(not named)
The third wall in the western part of my trench I am ripping out - in Squares #7 + #8.

46A/20 - Squares #7 + #8 - [level of ATHENS]
down to 139cm below datum

sherds, baja

So, the ascending walls in the western part of my axial trench are PARIS, ATHENS, and MILAN. I have SYDNEY in Sq. #2 and another wall in Square #5, also in Sq. #6. (2 more)
Ascending order from the eastern end of my axial trench, SYDNEY, MUNICH, & MADRID.

Tuesday 4/4/95

Today we are starting to chase out walls since we finished up the axial trench yesterday. I am chasing out SYDNEY to the North, off of Square #2, one meter w/ a 30cm bulk. This will be Sub-Operation 46C. I am also chasing out PARIS, but to the south, off of Squares #10 & #11, one meter so far w/ a 30 cm bulk. This will be Sub-Operation 46D. The first two lots of these operations are:

46C/01 → Square #1, 0cm → 20cm
sherds, baja, obsidian

46D/01 → Square #1, 0cm → ^{167cm b.d.}~~20cm~~
sherds, baja

I am going to continue down to ⁵⁰~~20~~cm below ground level in OP46C to see if we pick up SYDNEY.

46C/02 - Square #1 20cm → 50
sherds, baja, reave, obsidian

Continuing out southwards w/ OP46D, lot 46D/02 will be in Square #2, 0cm → 167cm
sherds, baja below datum

Wednesday 4/5/95

(or take out the bulk first)
In OP46C, we found in Square #1 a cut block, but no continuation of SYDNEY. I have setup Square #2 next to Square #1 of OP46A. Possibly we will see a corner or continuation of SYDNEY here. If not, I will go to the other side (South) of 46A to create Square #3.
46C/03 - Square #2, 0cm \rightarrow 20cm
sherds, baja reave, obsidian

In 46D, we found a continuation of ATHENS and possibly of PARIS. I set up Square #3 next to Squares #12 and #11 in 46A, to further follow out these walls.

46D/03 - Square #3, 0cm \rightarrow 195cm b.d.
sherds, baja

We are continuing down in 46C, Square #2.
46C/04 - Square #2, 20cm \rightarrow 50cm + Bulk
between 46A + 46C (Squares #1 + #2 of both)
Sherds, baja, obsidian, shell, human tooth

Also, I created Square #4 in 46D.
Also 46D/03 - Square #4 0cm \rightarrow 195cm b.d.

Wednesday 4/5/95

In OP46D, I have created Square #5 to come off of Square #2 to the south.

46D/04 - Square #5, 0cm \rightarrow 167cm b.d.
sherds, baja reqve, obsidian, grinding tool (?), white

Thursday 4/6/95

We are now going to explore SYDNEY to the south. To the north, it corners away from the mound, reinforcing the idea that it is part of another structure. Since I have completed my section today with 2d, I do not need to leave a bulk anymore. I am going to make Square #1 next to Square #2 of OP46A. It will be sub-op 46E.

46E/01 - Square #1, 0cm \rightarrow 20cm
sherds, baja reqve, obsidian

We are also continuing 46D/04 today. We found what looks like a white chalk metate leg, possibly a grinding tool?

We're starting 46E/02 now - Square #1 down to ~~15~~ 15cm b.d. in front of SYDNEY (from 20cm) and 20cm \rightarrow ~~145~~ 155cm b.d. behind SYDNEY.

sherds, baja, obsidian, bone

Thursday 4/6/95

We are now going to take out the Bulk between OPS 46A & 46D.

46D/05 - Bulk down to 205cm below datum
+ more in Sq. #3 & #4 also down to 205cm b.d.
sherds, obsidian, baja [10cm more]

We are taking out 46E another meter to continue to follow SYDNEY. It showed up in Square #1 of 46E.

46E/03 will be Sq. #2 0cm \rightarrow 155cm b.d.
in ~~front~~^{back} of SYDNEY and
0cm \rightarrow 170cm below datum in front of
SYDNEY

sherds, obsidian, baja

Friday 4/7/95

We are continuing Lot 46E/03 this morning.

In 46D, we are going to clear Square #6. I don't think PARIS continues here, so Lot 46D/06 will be 0cm \rightarrow 205cm below datum (Sq. #6)
Also Square #5 down to 205cm b.d.
sherds, baja, obsidian, shell

Friday 4/7/95

I am now creating Square #3 to OP46E. SYDNEY corners east on the southern end, and I am going to follow it out just one more meter before exploring MUNICH and MADRID.

46E/04 will be in Square #3 down to 170cm b.d. in the interior of SYDNEY and to 155cm b.d. on the exterior.
sherds, baja reqre, obsidian, ~~sherds~~
human bones

Monday 4/17/95

(Square #7)
We will start 46D/07 now. We are (120cm taking the meter out next to ATHENS b.d.) down to its level. Sherds, baja

We are also continuing on structure 188, with Operation 46B.

46B/07 will be Square #8, 50cm \Rightarrow 70cm
Sherds, shell, baja

46B/08 will be Square #1, 50cm \Rightarrow 70cm
Sherds, baja, obsidian

Monday 4/17/95

MUNICH
93 cm
b.d.

Lot 46E/05 will be in Square #4 (next to MUNICH) down to its level to follow it out. (150cm below datum)
Sherds, metate frag, baja, obsidian

Structure
188

We are beginning in Square #2 of OP 46B.
46B/09 - Square #2, 0cm \rightarrow 20cm + down to 70cm
sherds, baja, obs, mano in front of possible wall.

Also continuing inwards to Square #8.

46B/10 - Square #7, 0cm \rightarrow 20 cm.
sherds, baja, ~~tooth~~ tooth

We are also continuing to follow out ATHENS.
46D/08 will be Square #8 to level of ATHENS.
(to 120cm below datum)
sherds, baja

For structure 187, I am first going to try to find the four corners and then chase out the entire wall and clear dirt in the middle later on if there's time.

46B/11 - Square #3 0cm \rightarrow 50 cm
sherds, baja

Monday 4/17/95

We are coming down still in Square #8.
Still no walls yet.

46B/12 - Square #8 20cm \rightarrow 70cm
sherds, baja, shell, obsidian

Also in Operation 46B, we are continuing
w/ Square #3. - no more walls.

In 46D, we are now starting to follow
out MILAN w/ Square #9.

46D/09 - Square #9 [MILAN did not (?)
sherds only (0cm \rightarrow 85cm b.d.) continue]

it does
continue
In 46E, we are still continuing to
search for MUNICH; a root might have
messed up the wall to the south.

46E/06 - Square #5
sherds, bone, obsidian baja

We are continuing inwards in 46B
to Square #4.

46B/13 - Square #4 0cm \rightarrow 50cm
sherds, baja

We are following MUNICH to the north also.
46C/05 - Square #3 0cm \rightarrow
sherds

Tuesday 4/18/95

We are continuing lots 46B/13 in Square #4 and 46C/05 in Square #3 following MUNICH today. We are starting also 2 new lots:

46B/14 - Square #7, 0cm \rightarrow ⁴⁰~~25~~cm
sherds, baja, ~~forward walls~~

46E/07 - Square #6 to follow MADRID
to the south and connect sub-ops -
46D and 46E. (0cm \rightarrow 85cm below datum)
sherds, baja
(does not continue south(?))

We are continuing inwards in Square #5 in 46B. We will finish the axial trench & then re-orient another axial trench.

46B/15 - Square #5 0cm \rightarrow 50cm
sherds, baja, obs

+ 50cm more to clear around corner
46E/08 - Square #7 to follow MUNICH
(to 150cm b.d. in front) to south
sherds, baja, obsidian

46C/06 - to follow MADRID to north
Square #4 ^{& clear MADRID down to 115cm b.d.}
sherds, baja, obsidian

46B/16 - Square #6 0cm \rightarrow 50cm
sherds, baja, obs.

Wednesday 4/19/95

We are continuing to follow MUNICH (93 cm below datum) to the north in OP 46C.

46C/07 - Square #5
sherds, baja, obsidian, metate frag [down to 150 cm b.d. in front from 0 cm (ground)]

We are also following up westwards from the SW corner of MUNICH. It seems to run both east & west off the corner.

46E will be all the lots clearing up around MUNICH, MADRID + MILAN, next to 46D.

46E/09 - Square #8 + 50 cm out south to follow MUNICH westwards (to 93 cm & 180 cm below datum)
sherds, obsidian

In Structure 188, we are now creating a new axial trench. This will be OP 46F to the north of 46B and 46G to the south of the old trench. - A new 7 m trench. (meter 0 to meter 6)
46F/01 - Square #1 0 cm → 50 cm in front of SICILY
sherds, baja, obs, shell

46G/01 - Square #1 0 cm → 20 cm
Square #0 0 cm → 20 cm
sherds, baja, mano, obsidian

Wednesday 4/19/95

We are following out MADRID to the north in Square #6, 46C. MADRID is at 115 cm b.d.

46C/08 - Square #6 to follow MADRID
north
sherds, baja, obsidian

We are also continuing to follow MUNICH to the west. I have created Square #9 plus 50cm more to south and 50cm more to west to clear out a large area.

46E/10 - Square #9 + 50cm more to south +
to follow MUNICH west
sherds, baja, obs

We are continuing in in 46G to Square #2 (the third square in).
also Square #30 → 40cm
46G/02 - Square #2 0cm → 40cm
sherds, baja, obs, metate frags, bone

Thursday
4/20

46C/09 - Square #7 to follow ~~MUNICH~~ MUNICH
to the north (93 + 150 cm b.d.)

sherds, baja

Thursday
~~Friday~~ 4/20/95

I am now creating a new sub-operation to explore PARIS to the north and try to find the corner of the basal wall of my structure. Coming off of Square #10 of 46A will be sub-op 46H.

46H/01 - Square #1 0cm → 205cm b.d. in sherds, baja, obs, bone front of PARIS (167cm b.d. wall)

In 46E, we are still exploring more of MUNICH, MADRID, and MILAN.

46E/11 will be in Squares #10 and #11 ; 0cm → 150cm below datum sherds, baja, obsidian

I also found a piece of schist w/ a hole drilled through as I was moving a rockpile. I will simply call it unprovenienced. I will call it lot 46E/12.

46H/02 - Square #2 to 205cm below datum in front of PARIS & to 167cm b.d. (wall)
baja, sherds

46C/10 - Square #8 ; 0cm → 115cm b.d. (level of MADRID)
sherds, baja

Friday 4/21/95

We are taking out 46G one more meter, which will be called meter X, next to meter 0. It is now 8 meters long all the way through 46B.

46G/03 - Square #X 0cm \rightarrow 40cm
sherds, baja

We are now going to follow out SICILY to the west, this will be OP 46I.

46I/01 - Square #1; 0cm \rightarrow 50cm

sherds, baja, obs, mano, stone ball

Also, we are continuing to follow PARIS to the north in 46H.

46H/03 - Square #3 0cm \rightarrow 205cm b.d. in front of PARIS & to 167cm b.d. (wall)
sherds only

There ~~was~~ may be some type of floor at the northern end of MADRID. Also we found another wall, perpendicular to MUNICH, MADRID, and MILAN and cornering w/ MADRID. It will be called VIENNA, and is 97cm below datum.

Friday 4/21/95

We are excavating a 50cm by 300cm area along Squares # 3, 5, and 7 of Sub-OP46C, to clear more area in front of MUNICH. This will be lot 46C/11 - sherds, baja, obsidian 0cm \rightarrow 110cm b.d.

- We found another parallel wall - BUDAPEST

I believe that the NW corner of SICILY is maybe under the bulk of 46J. We are now going to explore SICILY to the east w/ sub-op 46J.

- 46J/01 - Square #1 down to 30cm + 50cm (2 levels of SICILY)
sherds, baja 0cm

We are now going to follow ATHENS to the north & further uncover PARIS to the north in Square #4, 46H

- 46H/04 - Square #4; 0cm \rightarrow 139cm b.d.
sherds, censer face frag, baja, obs, donut stone

We are continuing to follow SICILY east.
- 46J/02 - Square #2 to 0cm \rightarrow 30cm
sherds, baja

Monday 4/24/95

We are beginning four new lots this morning.

46J/03 - Square #3; 0cm →
sherds, baja

46H/05 - Square #5 down to ATHENS
to uncover it more & also PARIS.
0cm → 130cm b.d.
sherds, baja, obs, metate frag

46C/12 - Square #9 to further uncover
more of BUDAPEST; 0cm → 110cm b.d.
sherds, baja, obs

and 46E/12 - 200cm by 50cm area next
to squares #8D and #11E to
further clear around MUNICH westward.
0cm → 160cm b.d.
sherds, baja, obsidian

- 46C/13 - to search for MUNICH'S NE
Square #10 corner; 0cm → 110cm b.d.
sherds, baja, obsidian

- 46J/04 - Square #4; 0cm → 40cm
sherds, baja, obs

The wall next to VIENNA will be called MOSCOW.
(parallel)

Monday 4/24/95

46H/06 - Square #6 to follow ATHENS
0cm → 130cm b.d.

sherds, baja, obs, stone drilled on both sides
mano (almost a donut stone)

46E/14 - Square #12 + 50cm more to south to
follow possible wall east off of MUNICH
0cm → 150cm b.d.

sherds, baja, obs, stone ball

46C/14 - Square #11 0cm
to 110cm b.d.
sherds, baja

TUESDAY 4/25/95

• 46H/07 - Square #7 to find NW corner of PARIS
0cm → 205cm b.d.
sherds, baja

• 46J/05 - Square #5 ; 0cm → 40cm
sherds, baja, obs, stone ball

• 46C/15 - Square #12 ; 0cm → 110cm b.d.
sherds, baja

• 46E/15 - Square #13 0cm → 150cm b.d.
sherds, baja, obs

Tuesday 4/25/95

+ 46H/08 - Square #8 to find NW corner
of PARIS; 0cm \rightarrow 205cm b.d.
sherds, obs 0cm \rightarrow 167cm b.d. (wall)

46J/06 - 50cm out from Squares #1 & #2
to uncover more in front of SICILY
sherds, baja, obs 0cm \rightarrow 50cm

+ 46E/16 - Square #13; 0cm \rightarrow 110cm b.d.
sherds, baja

+ 46J/07 - Square #6; 0cm \rightarrow 50cm
sherds, baja, obs

Wednesday 4/26/95

- 46E/16 - Square #14; 0cm \rightarrow 150cm b.d.
sherds, baja, obs, bone around wall

46J/08 - 50cm by 200cm area next
to Squares #2 & #3; 0cm \rightarrow 50cm
sherds, baja, obs

46H/09 - Square #9 to find NW corner of PARIS
0cm \rightarrow 205cm b.d. & 167cm b.d. (wall)
sherds, shell, baja, obs

I am going to call the wall that continues
off of MUNICH to the west BERLIN.

Wednesday 4/26/95

46C/17 - Square #14 ; 0cm-110cm b.d.
sherds baja, obs.

46C/18 - 200cm by 60cm area next
to Squares #12 + #13C
0cm → 110cm b.d. sherds, Baja

46J/09 - 1m x 50cm area next to Sq #4J
0cm → 50cm
sherds, baja, obs, bone

- 46H/10 → Square #10 to follow ATHENS
sherds, obs, shell 0cm → 130cm b.d.

- 46J/10 - Square #7 ; 0cm → 50cm
sherds, baja, obs

- 46C/19 - Square #15 to follow MILAN [88]
0cm → 80cm b.d.
sherds, baja, obs, bone, manu frag

- 46C/20 - Square #16 ; 0cm → 115cm b.d.
sherds, baja

Thursday 4/27/95

We are still trying to find the NW corner of PARIS, so we're taking it out hopefully just one more meter to Square #11.

46H/11 - Square #11 ; 0cm \rightarrow 142 cm $\hat{=}$ 170 cm
below datum (wall)

sherds, baja, obs, metate frag

We are continuing to follow a poorly constructed wall south from SICILY in OP46J.

46J/11 - Square #8 ; 0cm \rightarrow 50cm
sherds, baja, obs

46C/21 - Square #17 ; 0cm \rightarrow 115cm b.d.
sherds, baja

46C/22 - Square #18 ; 0cm \rightarrow ⁸⁰~~115~~ cm b.d. (INLAN)
shell, sherds, baja, $\hat{=}$ 115 cm b.d.
mano, bone, obs

46H/12 - Square #12 ; 0cm \rightarrow 142 cm b.d. $\hat{=}$ 170 cm b.d.
sherds, baja, shell

46H/13 - Square #13 to clear more on top of ATHENS
0cm \rightarrow 130cm b.d.
sherds, baja, obs

Thursday 4/27/95

46J/12 - Square #9; 0cm \rightarrow 50cm
sherds, ~~obs~~, baja reque

46J/13 - Square #10; 0cm \rightarrow 50cm
sherds, baja, metate frag

46C/23 - Square #19; 0cm \rightarrow 80cm b.d. (MILAN)
8 0cm \rightarrow 115cm b.d. in back
sherds, baja, obs, shell

46H/14 - Square #14; 0cm \rightarrow 130cm b.d.
to clear more on top of ATHENS
sherds, baja, obs

FRIDAY 4/28/95

We are going to connect ops 46B and 46J
with lot 46J/14. We are clearing
down to 50cm from surface (0cm)
in front of the wall, VENICE. The wall
that connects SICILY and VENICE will be
called CALCUTTA. sherds, baja, obs

46H/15 - Square #15 to follow the wall east
off of PARIS, called BEIJING. 0cm \rightarrow 142cm b.d.
sherds, baja, obs, shell 0cm \rightarrow 170 cm b.d.

Friday 4/28/95

In 46J, we are going out 50cm more along squares #7, #8, and #9 to clear more along CALCUTTA & its corner with VENICE. It is a 50cm x 300cm lot, 0cm → 50cm

46J/15 - Shards, baja, obs

We are also continuing to explore the other structure that SYDNEY is a part of. This will be OP46K.

46K/01 - Square #1 (next to #2C)
0cm → 30cm

shards, baja, obs, bone

46H/16 - Square #16 + 50cm more to connect 46H and 46C; to clear more on top of ATHENS; 0cm → 130cm b.d.
shards, baja, ~~obs~~, bone, shell

46H/17 - Square #17 to clear more of ATHENS continuing east (now called SPARTA) and more of BEIJING. 0cm → 142cm b.d. (BEIJING)
0cm → 130cm b.d. (SPARTA)

shards, baja, obs, shell, mano

Tuesday
~~Monday~~
5/2/95

Tuesday
~~Monday~~ 5/2/95

We are continuing to follow BEIJING eastwards, as well as SPARTA.

46H/18 - Square #18 from ground surface (0cm) to 170 cm b.d. (in front of BEIJING) and to 142 cm b.d. (BEIJING wall itself)
sherds, baja, obs

46J/16 - area next to SQ #5J + #6J to connect 46B, 46G, & 46J. 0cm → 40cm
sherds, baja, metate frags, donut stone, obs, bone

46H/19 - Square #19 to uncover more on top of ATHENS; 0cm → 130cm b.d. ^{+60cm more to connect 46H & 46C}
sherds, baja

46H/20 - Square #20; to 142cm (BEIJING) and 130cm (SPARTA) below datum
sherds, Bajareque

~~Tuesday~~ Wednesday
5/3/95

46H/21 - Square #21 to 130cm b.d. (SPARTA)
sherds, baja, shell

46K/02 - Square #1; 30cm → 40cm
sherds, baja, obs

Wednesday 5/3/95

46K/03 - Square #2; 0cm \rightarrow 40cm
Still following wall off of SYDNEY east
sherds, baja, obs, bone

46H/22 - Square #22 to 170cm (in front) and
142cm b.d. (BEIJING)
sherds, bajareque

46H/23 - Square #23 + 60cm more to
connect 46H & 46C; clear on ATHENS & SPARTA;
[ground] 0cm \rightarrow 130cm b.d.
sherds, baja, mano, shell, obs

46J/17 - Area next to SQ #85 to connect to the
axial trench of 46G; 0cm \rightarrow 40cm
Sherds, baja, obs

46H/24 - We are clearing around the
corner BEIJING makes w/ MUNICH
to the NE; down to app. 170cm b.d.
sherds, baja, obs, mano, donut stone frag

46K/04 - Square #3; 0cm \rightarrow 40cm
following east wall off of
SYDNEY, called ADELAIDE.
sherds, baja, obs, bone

Thursday 5/4/95

46J/18 - Area next to Square #7J to connect
46J with 46G. 0cm \Rightarrow 40cm
shards, baja, obs, bone, stone balls, chert

46K/05 - Square #4 ; 0cm \Rightarrow 40cm
shards, baja, obs, bone + teeth (human)

The wall coming perpendicular off of
CALCUTTA in Structure 188, and
parallel to both VENICE and SICILY
will be named BOMBAY.

The wall that comes east off of ATHENS
perpendicular will be called CAIRO.

I have 2 floors in my structure - one
between MADRID and MILAN; this will
be called LIMA. The other one is
next to ATHENS, between it and
MILAN; it will be called CARACAS.

Thursday 5/4/95

^{+30cm more to south}
46K/06 - Square #5; 0cm \rightarrow 40cm
to find corner #4 of SYDNEY - ADELAIDE
structure
sherds, baja, obs, bone

46C/24 - Square #20; 0cm \rightarrow 120cm b.d.
to follow possible wall off of BUDAPEST
sherds, baja, metate frag

There is another wall present also in
the interior of the VENICE - CALCUTTA -
SICILY structure. It is next to BOMBAY,
parallel about 30 cm away. I will
name it QUEBEC.

We have started to dig to sterile in
the original axial trench of OP46A.
We are going to dig the meter in front
of MUNICH. This will be lot

46A/21 - from 150cm below datum to
sterile soil; sherds, baja, obs
(200cm b.d.)

46K/07 - 50cm \times 200cm ^{next to Squares #1K & #2K}
area to clear more
of ADELAIDE to the south; connects
46A & 46K. 0cm \rightarrow 40cm
sherds, baja, obs, bone, metate frag

Friday 5/5/95

There is a wall coming east off of BUDAPEST, so we are still continuing to follow it out in 46C.

46C/25 - Square #21; 0cm \Rightarrow 120cm b.d.
sherds, baja, obs

This wall off of BUDAPEST will be called LONDON.

46K/08 - Square #6; 0cm \Rightarrow 40cm
to uncover wall VICTORIA,
which ~~connects~~ is parallel to SYDNEY,
and perpendicular to ADELAIDE.
sherds, baja, obs, bone

46K/09 - Square #⁷~~9~~; 0cm \Rightarrow 40cm
sherds, baja, obs, bones & teeth
(human)

46C/26 - Square #22; 0cm \Rightarrow 120cm b.d.
to follow LONDON
sherds, baja, obs, bone

Monday 5/8/95

We are now uncovering the 4th wall that will connect SYDNEY, ADELAIDE, and VICTORIA; it will be called ALICE and appropriately, the entire structure will be called AUSTRALIA.

46K/10 - Square #8; 0cm \Rightarrow 40cm
to uncover ALICE
sherds, baja, obs

46K/11 - Area between Squares #4K & #7K
to complete 46A axial trench; 0cm \Rightarrow 40cm
sherds, baja, obs, bone, donut stone frag,
metate leg

Tuesday 5/9/95

Today we are finishing up lots 46K/10 and 46K/11. After I add the part of 46K to my section of 46A, I am going to clear the rest in the middle of the AUSTRALIA structure. Also I'm going to clear the NW corner of SICILY in 46I. Then I will be done excavating and will begin final notes.

There is another floor in the corner where MUNICH meets BERLIN; called ROME.

Wednesday 5/10/95

We are now going to excavate the rest in the center of the AUSTRALIA structure.

46K/12 - Area between lot 46K/11 and square #8K (see diagram of lots and squares) 0cm \rightarrow 40cm
sherds, baja, obs, bone

In Structure 188, we are going to take the bulk out between 46F and 46I. This will hopefully expose the NE corner of SICILY. This will be lot 46I/02;
0cm \rightarrow 50cm
sherds, bajareque, bone

In 46K, there is a small wall down the center of the AUSTRALIA structure extending from SYDNEY perpendicular (not quite touching SYDNEY) and ~~area~~ runs to VICTORIA. This wall will be called MELBOURNE.

Also, there is a wall that connects MELBOURNE and AUCE; it will be called NEW SOUTH WALES.

Final Notes - OP46 / St. 187 - p. 01

I will start my final notes on Structure 187, Operation 46, by generally describing all of the features (walls, floors) in terms of these criteria: length, height, width, type of rocks used, size of rocks used, centimeters below datum, orientation, and what other features the one I am describing relates to.

Size Chart for Rocks

very small : 0cm - 5cm

small : 5cm - 10cm

medium : 10cm - 30cm

large : 30cm - 40cm

extra large : 40cm - 50cm

extra extra large - 50cm and larger

After describing all of the characteristics of my features, I shall make some comments on the relationships of the features, in terms of phases of construction and use.

Final Notes - OP46/St. 187 - p.02

MUNICH

Munich is 8.60 meters long. Its orientation is $N60^{\circ}E$. It is only one course tall, with its average height being about 15cm tall. It is made up of large and extra large rocks, all of which are rounded river cobbles. The width of MUNICH varies from 35-50cm. It is 93cm below datum. It makes a rectangle with BEIJING (to the NE), BERLIN (connects on SE) and PARIS, which connects BERLIN and BEIJING.

BUDAPEST

BUDAPEST is 3.60 meters long. It is parallel with MUNICH, only about 30 or 40cm away; its orientation is also $N60^{\circ}E$. It too is just one course tall, made up of medium-sized river cobbles. Its height ranges from 5cm to 10cm tall. BUDAPEST ranges in width from 20cm to 30cm. It is 95cm below datum. On the SW end of BUDAPEST, there are 3 large cut blocks coming off to the SW, apparently tumble, and not leading to anything. It connects with LONDON on the NE.

Final Notes- OP46 / St. 187 - p.03

LONDON

LONDON comes off of BUDAPEST to the NE. It is 2.80 meters long. Its orientation is $S40^{\circ}E$. It is two courses tall, made up of medium size river cobbles, similar to those in BUDAPEST. It is approximately 20cm tall and on average about 20cm in width. LONDON is 113cm below datum. There is a 40cm extension beyond where LONDON corners with BUDAPEST, to connect with MUNICH.

MADRID

MADRID is 6.15 meters long. Its orientation is $N60^{\circ}E$; it is parallel to MUNICH and about 40cm away. It is made up of medium size river cobbles. It is one course tall, and one course wide, except south of LIMA, it is two courses wide. Its height ranges from 15cm-20cm. Where it's one course wide, it is on average 25cm thick; where it's two courses wide, it is 50cm-55cm thick. It is 115cm below datum. On the NE, it corners with SPARTA; on the SW end, it corners with a continuation of VIENNA. There is a two course row of rocks 60m long that connects MADRID w/ MUNICH.

Final Notes - OP46/St. 187 - p. 04

LIMA

LIMA is a small floor which is in between MADRID and MILAN, about in the middle of MADRID. It consists of very small and small river cobbles, with a few medium cobbles as well. Its dimensions are 100cm across and 65cm wide (connecting MADRID and MILAN). It is 109cm below datum, about at the same level as MADRID.

MILAN

MILAN is 5.10 meters long. It is 65cm away from MADRID and parallel to it at N60°E as well. It is not very well preserved. It is two courses wide and two courses tall, made up of medium size river cobbles. Its height is on average 25cm - 35cm tall; its width is approximately 45cm. On the SW end, it abuts VIENNA; on the NE it stops 60cm short of SPARTA. It is 85cm below datum. MILAN is what would be called a summit wall.

Final Notes - OP46/St. 187 - p. 05

SPARTA

SPARTA is 3.80 meters long. Its orientation is $N25^{\circ}W$. It consists of medium to large river cobbles. It is one course wide, averaging 25-30cm in width, and two courses tall, averaging 30-35cm in height. It rests behind BEIJING and corners with MADRID on the SE end and with ATHENS on the NW end. It is 113cm below datum.

BEIJING

BEIJING is 5.50 meters long. Its orientation is $N25^{\circ}W$, parallel with SPARTA. It is a basal wall, very well preserved, that corners with MUNICH on the SE end, and with PARIS on the NW end. It consists of extra large and extra extra large river cobbles, the front face of which is very flat and makes an excellent line. It is one course tall and one course thick. BEIJING averages in height from 10cm \rightarrow 20cm; in width from 45cm to 65cm. It is 142cm below datum.

Final Notes - OP46/st.187 - p.06

ATHENS

ATHENS is 7.35 meters long. Its orientation is $N40^{\circ}E$. On the NE end, it corners with SPARTA; on the SW end, it goes until it hits BERLIN. It is made up of medium size river cobbles. It is two courses tall and one course wide - except it is three courses wide in between CAIRO and VIENNA. In height, it averages 40cm-50cm tall. Where it is one course wide, its width is 25cm-30cm; where it's three courses wide between CAIRO and VIENNA, it is about 50cm wide. It is 130cm below datum. Although on the SW end, ATHENS runs all the way to BERLIN, I believe that it also forms a corner with VIENNA and MOSCOW, making them, connected with MADRID and SPARTA a rectangle within the PARIS-BERLIN-MUNICH-BEIJING rectangle, possibly therefore an earlier phase of construction. ATHENS sits up and behind PARIS just like SPARTA does with BEIJING.

Final Notes - OP 46/St. 187 - p.07

PARIS

PARIS is 8.50 meters long. Its orientation is $N40^{\circ}E$. It forms a rectangle, cornering with BEIJING on the NE end and with BERLIN on the SW end; the fourth wall between BEIJING and BERLIN is MUNICH. It is made up of mostly extra large and extra extra large river cobbles, with a few large ones as well. It is both only one course tall and one course wide. Its average height is 15cm-20cm. Its average width is from 40cm-55cm. It is 167cm below datum. Like BEIJING, the faces of the rocks forms a nice, fairly straight line.

CAIRO

CAIRO is a small wall extending SE off of ATHENS. It is 1.80 meters long. Its orientation is $N40^{\circ}W$. It is one course wide, with the average width being 20cm. It is three courses tall, with the height being 30cm-35cm tall. It is 90cm below datum, about the same level as MILAN. It is perpendicular to MILAN, but falls 45cm short of touching it.

Final Notes - OP46/St. 187 - p.08

CARACAS

CARACAS is a small floor that comes off of CAIRO and almost reaches ATHENS. Its dimensions are 108cm by 106cm, so it is almost a perfect square. It is made up of small, very small, and medium river cobbles. It is 110cm below datum. If it continued all the way to MILAN, CARACAS and LIMA (another floor) would match up almost perfectly.

VIENNA

VIENNA is 2.90cm long. It connects ATHENS and MILAN, but also extends to MADRID. Its orientation is $N40^{\circ}W$. It is three courses tall and one course wide, made up of medium size river cobbles. Its height is 35cm-40cm; its average width is 25cm-30cm. The extension beyond MILAN to MADRID is an extra 80cm (added to 2.90cm). It is 94cm below datum.

Final Notes - OP46/st. 187 - p. 09

MOSCOW

Moscow is 2.65 meters long. Its orientation is $N40^{\circ}W$. It is both one course wide and one course tall. It is made up of large ^{and extra large} river cobbles. Its average width is 35 - 45 cm; average height is about 15 cm - 20 cm. It lies parallel and just below VIENNA. It is 120 cm below datum.

ROME

ROME is a floor that lies in the interior corner of MUNICH and BERLIN. It extends to where the 80 cm extension of VIENNA hits MADRID, and to the small connection of rocks between MOSCOW and BERLIN. Its dimensions are 110 cm by 130 cm. It is made up of very small, small, and medium river cobbles. It lies at 127 cm below datum.

Final Notes- OP46 / St. 187 - p.10

BERLIN

BERLIN is 4.98 meters long, with a 2.10 meter long extension past MUNICH. Its orientation is $N40^{\circ}W$. It is one course wide and one course thick, made up of medium, large, and extra large river cobbles. Its average height is 15 cm. Its width is on average 30-45 cm. On the NW end, it corners with ATHENS, though it is more similar in appearance to PARIS, which it probably extended to at one time, but was not preserved. On the SE end, BERLIN corners with MUNICH, but has a 2.10 meter extension standing alone beyond MUNICH. It is 110 cm below datum.

I shall next describe the six walls of a small structure to the SE of structure 187. I call it the AUSTRALIA structure. The closest wall to my main structure is SYDNEY, which is parallel to MUNICH and 2.80 meters away.

Final Notes - ~~OP~~ 46/St. 187 - p. 11

SYDNEY

SYDNEY is 1.95 meters long. Its orientation is $N60^{\circ}E$. It is one course tall and one course wide, made up of medium size river cobbles with one cut stone on the SW end. Its average height is 15cm, and its average width is 20-25cm. It is 128cm below datum. It is the only wall in the AUSTRALIA structure that is one course wide.

ADELAIDE

ADELAIDE corners with SYDNEY on the NW and with VICTORIA on the SE end. It is 3.80 meters long. Its orientation is $N40^{\circ}W$. It is roughly two courses tall and four courses wide - it's hard to tell exactly because there are no distinct straight lines of rocks. It is made of very small, ~~one~~ small, and medium river cobbles, with one large cut block on the outside NW corner and a medium cut block on the inside NW corner. Average ~~height~~ width is 80cm-95cm; average height is 20-25cm. It is 137cm below datum.

Final Notes - OP46 / St. 187 - p. 12

VICTORIA

VICTORIA is 3.75 meters long. Its orientation is ~~N~~60°E. It is made up of very small, small, medium, and large river cobbles. Its average height is 10cm - 20cm. VICTORIA's width is about 1m. It is one course tall and four courses wide, similar to ADELAIDE. Also like ADELAIDE, the rocks on the exterior form a straight line, while the ones on the interior part of the wall are more jumbled. VICTORIA is 145cm below datum.

ALICE

ALICE is 3.85 ~~cm~~ meters long. Its orientation is N40°W. It is one course tall and three courses wide. Its average height is 10cm, and its average width is 65cm - 75cm. It consists of very small, small and medium size river cobbles, with one cut block on the NW end where it corners with SYDNEY. It is 145cm below datum.

Final Notes -OP46/St.187 - p.13

MELBOURNE

MELBOURNE is 1.70 meters long. Its orientation is $N40^{\circ}W$. It runs parallel with ADELAIDE and ALICE, about exactly in between them, cutting the AUSTRALIA structure in half. It touches VICTORIA on its SE end, but comes 50cm short of touching SYDNEY on its NW end. It is made up of small and medium size river cobbles. It is one course wide and two courses tall. Its average width is 20cm-30cm. Its average height is about 20cm. It lies at 132cm below datum.

I found some skull bones and teeth in the AUSTRALIA structure, located in the corner of ALICE and SYDNEY, about 75cm back into the interior from SYDNEY, right along the wall ALICE.

NEW SOUTH WALES

NEW SOUTH WALES is 1 meter long. It connects MELBOURNE and ALICE. Its orientation is $N60^{\circ}E$. It is one course tall and two courses wide. Average height is 15cm; average width is 45cm. It is made of medium size river cobbles. It is 129cm below datum.

Final Notes - OP46/St. 188 - p. 14

VENICE

VENICE is not completely uncovered. The part that we do have uncovered is 2.90 meters long. Having found its opposite corner on SICILY, I can estimate that VENICE would be about 4.30 meters long in its entirety. Its orientation is $N60^{\circ}W$. It is one course wide and two courses tall, made up of medium size river cobbles. Its height ranges from 25cm to 40cm. Its width averages 30cm. It corners with CALCUTTA on its SE side. VENICE is 45cm below datum.

CALCUTTA

CALCUTTA is 5.50 meters long. Its orientation is $N30^{\circ}E$. It is made up of very small, small, medium and large river cobbles, as well as a medium cut block on its corner with SICILY and four large and extra large cut blocks cut blocks where QUEBEC and BOMBAY hit CALCUTTA. It is two courses wide and one course tall. Its average height is 10cm-15cm. Its average width is 55cm-70cm wide. It corners with VENICE on the SW end and with SICILY on the NE end. QUEBEC and BOMBAY hit CALCUTTA in its center. CALCUTTA is 56cm below datum.

Final Notes - OP 46/St. 188 - p. 15

QUEBEC

QUEBEC is 2.35 meters long. Its orientation is $N50^{\circ}W$. It is made up of medium, small, and very small river cobbles. It is one course wide and two courses tall. It runs parallel to and is about 45cm away from BOMBAY. Its average height is about 25cm. Its average width is 20cm - 25cm. QUEBEC is 63 cm below datum.

BOMBAY

BOMBAY is 2.40cm long. It runs right next to QUEBEC and hits CALCUTTA perpendicularly. It is oriented at $N60^{\circ}W$. It is two courses tall and one course wide, similar to QUEBEC in appearance. It consists of small, very small, and medium river cobbles. Its height ranges from 25cm - 35cm. Its average width is about 25cm. It lies at 60cm below datum. BOMBAY and QUEBEC lie almost equidistant from VENICE and SICILY, splitting the structure in half.

Final Notes - OP46/St. 188 - p. 16

SICILY

SICILY is 4.20 meters long. It is oriented at $N50^{\circ}W$. It is two courses tall and two courses wide, made up of very small, small, and medium river cobbles, with two large cut stone blocks at either end. The width of SICILY, which is two courses, is very well defined - the two courses making distinct rows. Its average height is about 20cm. Its average width is approximately 70cm. SICILY is 54cm below datum. It corners with CALCUTTA on its SE point.

Final Notes - OP46/St.187 - p.17

General Comments

I believe that in Structure 187, the main part, there were at least two separate phases of construction. First, it appears that ATHENS, SPARTA, MILAN, and VIENNA form a very large room, with CAIRO almost dividing it in half, and with CARACAS as a small interior floor. Perhaps MOSCOW was built at the same time as a step, and also perhaps MADRID was used as a terrace, with the LIMA floor possibly being an entrance. Or it could be that SPARTA, ATHENS, VIENNA and MADRID formed the original structure, with MILAN used interiorly as a divider. Later, this structure was expanded, also this time using larger rocks. We now have BEIJING, PARIS, BERLIN, and MUNICH forming a larger rectangle. This expansion extends beyond the original structure 40-60cm. Also BERLIN extends beyond MUNICH to form one part of a front terrace perhaps. BUDAPEST and LONDON may also be part of the same terrace, because I cannot tell what else they would be used for. Therefore, I believe that MUNICH would be the front of the structure, oriented to the southeast.

Final Notes - OP46/St. 187 - p.18

General Comments con't

When the addition was made, a wall was extended from MILAN to BERLIN, to therefore enclose the new floor Rome. Also, there is a small wall connecting MUNICH to LONDON, and also ATHENS to BERLIN. Due to the amount and type of artifacts, I believe that this was a domestic structure. Where all of the walls corner, they are pretty much integrated. This was a pretty straightforward structure with very clear walls and boundaries. Also, most of the walls are very well preserved and ^{were} very easy to recognize as walls.

As for the AUSTRALIA structure, it is pretty straightforward as well, and also probably a domestic structure. It has four main walls, SYDNEY, ADELAIDE, VICTORIA and ALICE, and is oriented the same direction as the larger structure in St. 187. It has a divider, MELBOURNE, and another wall extending from MELBOURNE to ALICE called NEW SOUTH WALES. I found the skull bones and teeth of a child I believe along the ALICE wall between SYDNEY and NSW. SYDNEY is the only

Final Notes - OP46/St. 187 - p.19

General Comments con't

wall in the AUSTRALIA Structure that is one course wide. ALICE, ADELAIDE, and VICTORIA are all very thick. This structure was perhaps used as a storage area for the larger structure. The walls are fairly well preserved, not as pretty as the ones in the main structure. They are also fairly integrated.

OP46/St. 188 - General Comments

Structure 188 is also a pretty straight-forward structure to understand architecturally. It is oriented with what I believe is its front face (SICILY) to the northeast. SICILY is a very well preserved wall; the rest are OK. SICILY, VENICE, and CALCUTTA form three walls of a rectangular structure, the fourth one of which I must have accidentally ripped out. BOMBAY and QUEBEC split the structure nearly in half. There are more cut blocks here than in Structure 187, one at each end of SICILY and four where BOMBAY and QUEBEC meet CALCUTTA. The walls are

Final Notes - OP 46 / St. 188 - p.20

General Comments con't

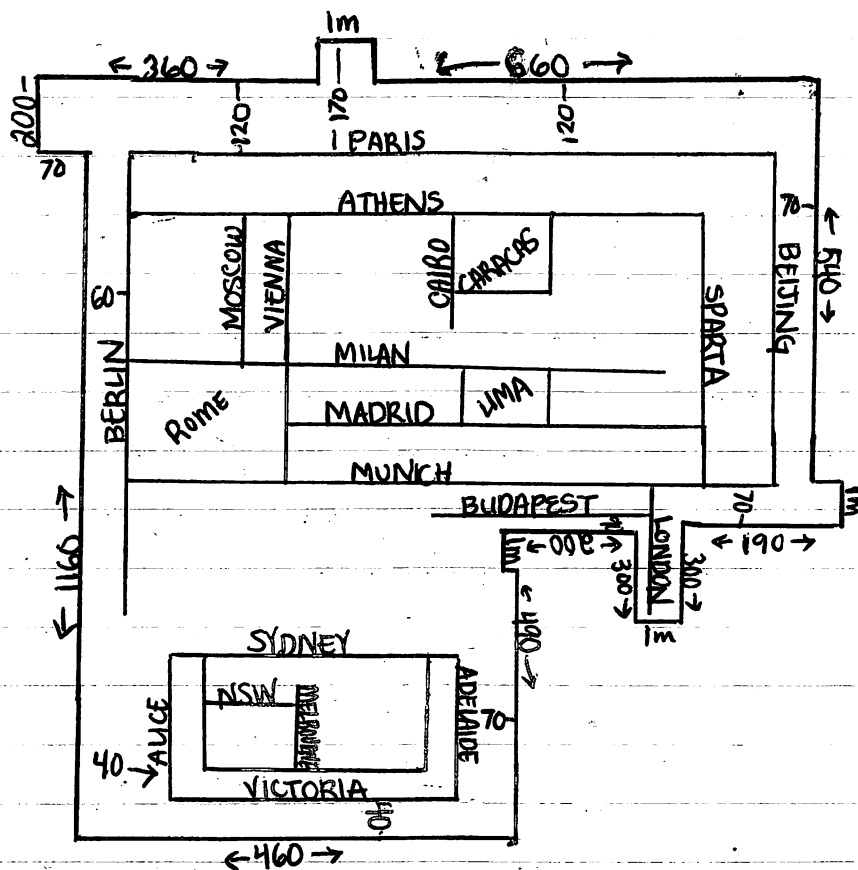
fairly well integrated. I believe structure 188 was also a domestic structure, just a smaller one.

PVN 95
#75

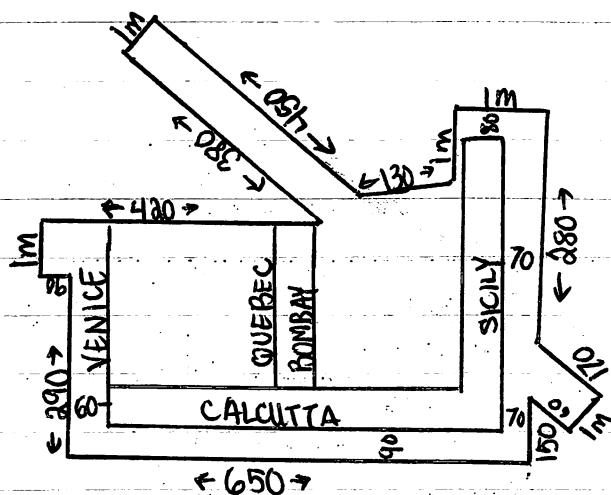
EXCAVATION PERIMETER - OP 46 / St. 187 & 188

Final Notes
p. 21

*structures
not to scale



St. 187



St. 188

OPERATION 46

P95 / #75

LOTS p.01 (II)

- 46A/01 - Square #1, 0cm \Rightarrow 20cm
sherds, obsidian, chert
- 46A/02 - Square #11, 0cm \Rightarrow 20cm / Square #10
sherds, obsidian 0cm \Rightarrow 10cm
- 46B/01 - Square #1, 0cm \Rightarrow 20cm
sherds, baja reqre, obsidian
- 46B/02 - Square #89, 0cm \Rightarrow 20cm
sherds, baja reqre, shell
- 46A/03 - Square #1, 20cm \Rightarrow 40cm
sherds, baja reqre, obsidian
- 46A/04 - Square #12, 0cm \Rightarrow 20cm
sherds, baja reqre
- 46B/03 - Square #1, 20cm \Rightarrow 40cm
sherds, baja reqre, obsidian, bone
- 46B/04 - Square #89, 20cm \Rightarrow 40cm
sherds, baja reqre
- 46B/05 - Square #1, 40cm \Rightarrow ⁵⁰cm
sherds, baja reqre, shell, obsidian
- 46B/06 - Square #89, 40cm \Rightarrow ⁵⁰cm
sherds, baja reqre, metate leg

LOTS p.02 (I)

46A/05 - Square #1, 40cm \rightarrow 60cm (¹⁷⁰~~100~~cm below datum)
sherds, baja reave, obsidian

- 46A/06 - Square #12, 20cm \rightarrow 60cm } 205cm
Square #11, 20cm \rightarrow 60cm (below datum)
sherds, baja reave, $\frac{1}{2}$ donut stone

46A/07 - Square #2, 0cm \rightarrow 20cm
sherds, baja reave

46A/08 - Square #10 down to level of 2 very
large rocks in #11. (195 cm below datum)
sherds, baja, obsidian, chert-like rock.

46A/09 - Square #2, 20cm \rightarrow 40cm
sherds, baja reave, carbon

46A/10 - Square #9, 0cm \rightarrow 20cm
sherds, baja

46A/11 - Square #2, 40cm \rightarrow 60cm (^{170cm b.d.}) in front of
possible wall only.
sherds, baja, obsidian

- 46A/12 - Square #3 0cm \rightarrow 20cm
sherds, baja, obsidian

46A/13 - Square #9 - 133cm below datum
sherds, baja, shell (possible wall)

LOTS p.03(JF)

46A/14 - Square #8 down to ¹¹³~~100~~ cm below datum ^(3rd possible wall)
sherds, baja [many painted sherds to same jar]

46A/15 - Square #3, 20cm → 50cm (level of SYDNEY) ^[155cm b.d.]
sherds, baja, obsidian, bone

46A/16 - Square #7 - to 113cm below datum ^(in front of MILAN, 86 cm below datum)
sherds, baja

46A/17 - Square #4, 0cm → ⁵⁰~~100~~ cm ¹⁵⁵~~100~~ cm below datum
sherds, baja, obsidian

46A/18 - Square #6 - to 86cm b.d. (MILAN)
sherds, baja, obsidian

46A/19 - Square #5 - 108cm below datum
sherds, baja, obsidian

46A/20 - Squares #7 + #8 to 139cm b.d. (ATHENS)
sherds, baja.

- 46C/01 - Square #1, 0cm → 20cm
sherds, baja, obsidian

46D/01 - Square #1, 0cm → ^{167cm below}~~100cm~~ datum
sherds,

- 46C/02 - Square #1, 20cm → 50cm
sherds, baja, obsidian

46D/02 Square #2, 0cm → 167cm b.d.
sherds, baja

LOTS p.04 (II)

- 46C/03 - Square #2, 0cm \rightarrow 20cm
sherds, baja, obsidian
- 46D/03 - Squares #3⁺#4, 0cm \rightarrow 195cm b.d.
sherds, baja
- 46C/04 - Square #2, 20cm \rightarrow 50cm + Bulk bet ^{46A+} 46C
sherds, baja, obsidian, shell, human tooth
- 46D/04 - Square #5, 0cm \rightarrow ¹⁶⁷~~170~~cm b.d.
sherds, baja, obsidian, grinding tool (white) [?]
- 46E/01 - Square #1, 0cm \rightarrow 20cm
sherds, baja, obsidian
- 46E/02 - Square #1, 20cm \rightarrow ^{170cm}~~170~~cm b.d. in front of SYDNEY
& 20cm \rightarrow ~~170~~cm b.d. "back" "
sherds, baja, obsidian, bone 155cm
- 46D/05 - Bulk bet. 46A + 46D down to 205cm b.d.
+ more in Squares #3 + #4 also down to 205cm b.d.
sherds, baja, obsidian
- 46E/03 - Square #2 \rightarrow 0cm \rightarrow 155cm b.d. in back of
SYDNEY
0cm \rightarrow 170cm b.d. in front of SYDNEY
sherds, baja, obsidian
- 46D/06 - Square #6, 0cm \rightarrow 205cm b.d.
+ Square #5 down to 205cm b.d.
sherds, baja, obsidian, shell

LOTS p.05 (II)

- 46E/04 - Square #3 0cm \rightarrow 170cm b.d. interior
of SYDNEY AND
0cm \rightarrow 155cm - exterior
sherds, baja, obsidian, human bones
- 46E/05 - Square #4 (next to ^{140cm b.d.} MUNICH)
down to level of MUNICH to follow out
sherds, metate frag
- 46D/0~~06~~⁰⁷ - Square #~~6~~7 (next to ATHENS) to follow
it out [down to its level] 120cm b.d.
sherds, baja
- 46B/0~~07~~⁰⁷ - Square #~~7~~8 50cm \rightarrow 70cm
sherds, shell, baja
- 46B/0~~08~~⁰⁸ - Square #1 50cm \rightarrow 70cm
sherds, baja, obsidian
- 46B/09 - Square #2, 0cm \rightarrow 20cm ^{to 70cm in} + front of possible
sherds, baja, obsidian mano wall
- 46D/0~~09~~⁰⁸ - Square #8 to level of ATHENS
sherds, baja (120cm b.d.)
- 46B/10 - Square #~~8~~9, 0cm \rightarrow 20cm
sherds, baja, ~~tooth~~
- 46B/11 - Square #3, 0cm \rightarrow 50cm
sherds, baja

get him to jump higher

P95 #75

LOTS p.06(II)

46B/12 - Square #8, 20cm → 70cm
sherds, baja shell, obsidian

46D/09 - Square #9 to follow MILAN
sherds only (0cm → 85cm b.d.)

46E/06 - Square #5 to follow MUNICH (to 150cm b.d.)
sherds, baja, obsidian, bones (93cm b.d.)
south

46B/13 - Square #4 0cm → 50cm
sherds, baja

46C/05 - Square #3 to follow MUNICH (93cm b.d. down-wall)
sherds, baja to 150cm b.d. in front of MUNICH
north

46B/14 - Square #7 0cm → ⁴⁰~~20~~cm * around walls
sherds, baja

46E/07 - Square #6 to follow MADRID ^(to 85cm b.d.)
to connect 46D and 46E
sherds, baja, obsidian

46B/15 - Square #5 0cm → 50cm
sherds, baja, obsidian

46E/08 - Square #7 to follow MUNICH south
to 150cm b.d. in front + 50cm more to clear corner
sherds, baja, obsidian

46C/06 - Square #4 to follow MADRID to north
sherds, baja, obsidian & clear MADRID down to 115cm b.d.

LOTS p.07 (II)

46B/16 - Square #6 0cm → 50cm
sherds, baja, obs

46C/07 - Square #5 to follow MUNICH north
sherds, baja, obsidian, metate frag.
to Munich wall - 93cm b.d. / in front - 150cm b.d.

46E/09 - Square #8 (+50cm to south) to follow
MUNICH westwards [93cm b.d. + 150cm b.d.]
sherds, obsidian

46F/01 - Square #1 0cm → 50cm in front
sherds, baja, obs, shell of SICILY

46G/01 - Square #1 0cm → 20cm
Square #0 0cm → 20cm
sherds, baja reque, mano, obsidian

46C/08 - Square #6 to follow MADRID north
sherds, baja, obsidian to 115cm b.d.

46E/10 - Square #9 + 50cm more to south & west
to follow MUNICH
sherds, baja, obs

46G/02 - Square #2 0cm → 40cm
sherds, baja, obs, metate frags, bone
and Square #3 0cm → 40cm

LOTS p.08(II)

- 46C/09 - Square #7 to follow MUNICH north
sherds, baja (93cm + 150cm b.d.)
- 46H/01 - Square #1 ; 0cm \rightarrow 205cm b.d. in
sherds, baja, obs, bone front of PARIS \rightarrow to 167cm b.d. (wall)
- 46E/11 - Squares #10 & #11 ; 0cm \rightarrow 150cm b.d.
sherds, baja, obs
- 46E/12 - unprovenienced donut stone
- 46H/02 - Square #2 ; 0cm \rightarrow 205cm b.d. in front
of PARIS \rightarrow to 167cm b.d. (wall itself)
sherds, baja
- 46C/10 - Square #8 ; 0cm \rightarrow 115cm [level of
sherds, baja below datum MADRID]
- 46G/03 - Square #X ; 0cm \rightarrow 40cm
sherds, baja
- 46H/03 - Square #3 ; 0cm \rightarrow 205cm b.d. in front
of PARIS \rightarrow to 167cm b.d. (wall)
sherds, only
- 46I/01 - Square #1 ; 0cm \rightarrow 50cm
sherds, baja, obs, mano, stone ball
- 46C/11 - 50cm \times 300cm area next to Squares
#3, 5, & 7 of OP46C - to clear more in front of MUNICH
sherds, baja, obs 0cm \rightarrow 110cm b.d.

LOTS p.09 (II)

- 46J/01 - Square #1 to 30cm ; 50cm (2 levels of SICILY)
sherds, baja
- 46H/04 - Square #4; 0cm \rightarrow 130cm b.d. ^{to follow ATHENS north}
sherds, censer face frag, baja, obs, donut stone
- 46J/02 - Square #2 ; 0cm \rightarrow 30cm
sherds, baja
- 46J/03 - Square #3; 0cm \rightarrow 30cm
sherds, baja
- 46H/05 - Square #5 to follow ATHENS north
0cm \rightarrow 130cm b.d.
sherds, baja, obs, metate frag
- 46E/13 - 50cm by 200cm area next to Squares
#8D and HE to clear MUNICH to west
0cm \rightarrow 160cm b.d.
sherds, baja, obs
- 46C/12 - Square #9 to uncover more of BUDAPEST
0cm \rightarrow 110cm b.d.
sherds, baja, obs
- 46C/13 - Square #10 to search for NE corner of MUNICH
0cm \rightarrow 110cm b.d.
sherds, baja, obs
- 46J/04 - Square #4 0cm \rightarrow 40cm
sherds, baja, obs

LOTS p. 10 (F)

★

46H/06 - Square #6 to follow ATHENS
0cm → 130cm b.d.
sherds, baja, obs, mano, stone drilled on both sides (almost a donut stone)

46E/14 - Square #12 + 50cm to south to follow
possible wall east off of MUNICH
0cm → 150cm b.d.
sherds, baja, obs, stone ball

46C/14 - Square #11 0cm → 110cm b.d.
sherds, baja

46H/07 - Square #7 to find ^{NW} corner of PARIS
0cm → 205cm b.d.
sherds, baja

46J/05 - Square #5; 0cm → 40cm
sherds, baja, obs, stone ball

46C/15 - Square #12; 0cm → 110cm b.d.
sherds, baja

46S/06 - 50cm more from Squares #1 & #2 to clear
more in front of SICILY; 0cm → 50cm
sherds, baja, obs

- 46E/15 - Square #13; 0cm → 150cm b.d.
sherds, baja, obs

LOTS p.11 (II)

46H/08 - Square #8 to find NW corner of
PARIS ; 0cm \rightarrow 205cm \times 167cm b.d. (wall)
sherds, obs

46C/16 - Square #13; 0cm \rightarrow 110cm b.d.
sherds, baja

46J/07 - Square #6 0cm \rightarrow 50cm
sherds, baja, obs

46H/09 - Square #9 to find NW corner of PARIS
0cm \rightarrow 205cm \times 167cm b.d. (wall)
sherds, baja, obs, shell

46J/08 - 50cm by 200cm area next to Squares
#2 $\&$ #3 ; 0cm \rightarrow 50cm
sherds, baja, obs

46C/17 - Square #14 ; 0cm \rightarrow 110cm b.d.
sherds, baja, obs

46E/16 - Square #4. 0cm \rightarrow 150cm b.d.
sherds, baja, obs, bone, metate frag

46J/09 - 1m \times 50cm area next to Sq #4
0cm \rightarrow 50cm
sherds, baja, obs, bone

46C/18 - 200cm by 60cm next to #12C $\&$ #13C
0cm \rightarrow 110cm b.d. sherds, baja

Squares

LOTS p. 12 (II)

46H/10 - Square #10 to follow ATHENS
0cm → 130cm b.d.
sherds, obs, shell

46J/10 - Square #7; 0cm → 50cm
sherds, baja, obs

46C/19 - Square #15 to follow MILAN
0cm → 80cm b.d. ~~scribble~~
sherds, baja, obs, bone, mano fragment

46C/20 - Square #16; 0cm → 115cm b.d.
sherds, baja ~~scribble~~

46H/11 - Square #11 to find NW corner of PARIS
0cm → 170cm & 142cm below datum
sherds, baja, obs, metate frag

46J/11 - Square #8; 0cm → 50cm
sherds, baja, obs

46C/21 - Square #17; 0cm → 115cm b.d.
sherds, baja ~~scribble~~

46C/22 - Square #18; 0cm → 80 + 115cm b.d.
sherds, baja, obs, shell, bone
mano

LOTS p.13(II)

46H/12 - Square #12; 0cm \rightarrow 170 cm b.d. and
0cm \rightarrow 142 cm b.d. (wall)
sherds, baja, shell

46H/13 - Square #13 to uncover more on top
of ATHENS; 0cm \rightarrow 130cm b.d.
sherds, baja, obs

46J/12 - Square #9; 0cm \rightarrow 50cm
sherds, baja, ~~obs~~

46J/13 - Square #10; 0cm \rightarrow 50cm
sherds, baja, metate frag

46C/23 - Square #19; 0cm \rightarrow 80cm b.d. (MILAN)
& 0cm \rightarrow 115 cm b.d. in back of wall
sherds, baja, obs, shell

46H/14 - Square #14; 0cm \rightarrow 130cm b.d. to
clear more on top of ATHENS
sherds, baja, obs

46H/15 - Square #15 to follow wall east from
PARIS, called BEIJING. 0cm \rightarrow 170 cm b.d.
sherds, baja, obs, shell 0cm \rightarrow 142cm b.d. (wall)

46J/14 - 0cm \rightarrow 50cm in front of VENICE & to
connect ops 46B and 46J
sherds, baja, obs

LOTS p. 14 (II)

46J/15 - 50cm x 300cm area next to
Squares #7, 8, 9 J to clear more along
CALCUTTA & its corner w/ VENICE; 0cm \rightarrow 50cm
sherds, baja, obs

46K/01 - Square #1; 0cm \rightarrow 30cm
sherds, baja, obs, bone

46H/16 - Square #16 + 50cm more to connect
46H and 46C; to clear more on top
of ATHENS; 0cm \rightarrow 130cm b.d.
sherds, baja, ~~bone~~, bone, shell

46H/17 - Square #17 clearing from ground
level (0cm) to BEIJING (142cm b.d.) and
SPARTA (130cm b.d.)
sherds, baja, obs, shell, mano

46H/18 - Square #18 0cm \rightarrow 170 + 142cm below datum
to follow BEIJING
sherds, baja, obs

46J/16 - area next to SQ #5 + #6 J to connect 46B,
46G and 46J; 0cm \rightarrow 40cm
sherds, baja, metate frags, donut stone, obs, bone

46H/19 - SQ #19; 0cm \rightarrow 130cm b.d. (ATHENS)
sherds, baja

46H/20 - SQ #20; 0cm \rightarrow 142 & 130cm b.d. (SPARTA
& BEIJING)
sherds, baja

P95 #75

LOTS p. 15 (II)

46K/02 - Square #1; 30cm \rightarrow 40cm
sherds, baja, obs

46H/21 - Square #21; ground to 130cm b.d. (SPARTA)
sherds, baja, shell

46K/03 - Square #2; 0cm \rightarrow 40cm
sherds, baja, obs, bone

46H/22 - Square #22; 0cm \rightarrow 170. + 142 cm b.d. (BEIJING)
sherds, BajaReque

46H/23 - Square #23 + 60cm to connect
46H & 46C; clear on top of ATHENS + SPARTA
0cm \rightarrow 130cm b.d.
sherds, baja, mano, obs, shell

46J/17 - Area next to Sq #8J to connect to the
axial trench of 46G; 0cm \rightarrow 40cm
sherds, baja, obsidian

46H/24 - Clearing around corner of BEIJING
with MUNICH down to \sim 170cm b.d.
sherds, baja, obs, mano, donut stone frag

- 46K/04 - Square #3; 0cm \rightarrow 40cm
sherds, baja, obs, bone

LOTS p.16 (II)

46J/18 - Area next to SQ #8J to connect
46J and 46G; 0cm \Rightarrow 40cm
sherds, baja, obs, bone, stone balls, chest

46K/05 - Square #4; 0cm \Rightarrow 40cm
sherds, baja, obs, bone + teeth (human)

46K/06 - Square #5; 0cm \Rightarrow 40cm
to find 4th corner of SYDNEY-ADELAIDE structure
sherds, baja, obs, bone

46C/24 - Square #20; 0cm \Rightarrow 120cm b.d.
to follow possible wall off of BUDAPEST
sherds, baja, metate frag

46K/07 - 50cm \times 200cm area next to Squares
#1K & #2K to clear more of
ADELAIDE. 0cm \Rightarrow 40cm
sherds, baja, obs, bone, metate frag

46A/21 - meter in 46A in front of MUNICH;
from 150cm b.d. to sterile soil - 200cm b.d.
sherds, baja, obs

46C/25 - Square #21; 0cm \Rightarrow 120cm b.d.
sherds, baja, obs

46K/08 - Square #6; 0cm \Rightarrow 40cm

LOTS p.17 (II)

46K/08 - Square #6; 0cm \rightarrow 40cm
to uncover VICTORIA
sherds, baja, obs, bone

46K/09 - Square #7; 0cm \rightarrow 40cm
sherds, baja, obs, bone, teeth (human)

46C/26 - Square #22; 0cm \rightarrow 120cm b.d.
to follow LONDON
sherds, Baja, obs, Bone

46K/10 - Square #8; 0cm \rightarrow 40cm
to uncover 4th wall, ALICE
sherds, baja, obs

46K/11 - Area between Squares #4 & 7K
to complete 46A axial trench; 0-40cm
sherds, baja, obs, bone, donut stone frag,
metate leg

46K/12 - Area between lot 46K/11 and Square
#8K (see diagram); 0cm \rightarrow 40cm
sherds, baja, obs, bone

46I/02 - Bulk between 46F and 46I;
0cm \rightarrow 50cm; to expose NE corner of
sherds, baja, bone SICILY

Subap. 46 (Liz's excavations)
5/6/55 I.H. 2 1545 (General)

Prepared By	Initials	Date
Approved By		

	1	2	3	4	5
	Point	A	M.I.D.	Distance (m)	
1	SW PARIS	✓ 314°01'	1933	17.55	1
2	" Berlin	✓ 313°30'	1720	16.59	2
3	" Moscow	✓ 317°15'	1679	16.42	3
4	" Vienna	✓ 319°30'	1444	16.06	4
5	Wend Cairo (S.)	✓ 327°30'	1163	15.57	5
6	CARACAS P.L.-R	✓ 330°30'	1245	14.89	6
7	NB. Athens	✓ 340°01'	1458	16.28	7
8	" PARIS	✓ 342°01'	1861	17.19	8
9	NB. Milan	✓ 339°30'	1060	13.55	9
10	Ext. NB. Madrid	✓ 344°45'	1266	12.79	10
11	NB. Munich	✓ 348°30'	1507	12.20	11
12	Munich / London.	✓ 343°01'	1264	11.72	12
13	London / Budapest	✓ 341°30'	1160	11.18	13
14	SE. London	✓ 348°15'	1449	8.76	14
15	Lima P.L.-R	✓ 332°15'	1214	12.85	15
16	Cairo, EAST end (N.)	✓ 327°45'	1730	13.85	16
17	Madrid / Lima, SW.	✓ 328°30'	1213	12.32	17
18	SW Budapest	323°30'	1293	10.86	18
19	NW Madrid	316°45'	1309	12.33	19
20	SW Milan	✓ 318°01'	1009	13.35	20
21	Berlin / Munich	308°30'	1302	12.18	21
22	SE. Berlin (end)	✓ 304°15'	1592	10.01	22
23	Int. Athens + Vienna	✓ 319°15'	1325	15.57	23
24	Milan steps out, SW.	✓ 313°30'	1171	13.22	24
25	2. Moscow	✓ 315°01'	1374	13.53	25
26	Milan steps E.	✓ 316°15'	1093	13.09	26
27	MAD. / Munich. connect. ext.	✓ 344°15'	1313	12.24	27
28	Int. NB. Madrid	✓ 341°30'	1219	12.65	28
29	Madrid / Munich connect. int.	✓ 343°01'	1261	12.18	29
30	SE. Lima P.L.-R	✓ 334°15'	1241	12.66	30
31	NB Lima P.L.-R	✓ 337°01'	1254	13.08	31
32	SW " "	✓ 330°01'	1257	12.34	32
33	NW " "	330°01'	1234	12.94	33
34	SE. CARACAS	✓ 332°45'	1151	14.59	34
35	SW CARACAS	✓ 328°30'	1230	14.56	35
36	NB. CARACAS	✓ 332°15'	1273	15.32	36
37	NW CARACAS	329°15'	1344	15.32	37
38	Rome P.L.-R	✓ 312°30'	1462	12.93	38
39	Ext. NB. Sydney / Adelaide con.	✓ 326°30'	1425	8.79	39
40	Int. " " " "	✓ 321°45'	1631	8.33	40



45-605 Eye-Ease®
45-305 2-Pack
Made in USA

Subep. 46 (cont.)
5/10/55

I H = 1545 (ground)

CL2's excavations

Prepared By	Initials	Date
Approved By		

	POINT	λ	MWD.	DISTANCE	
1	EXT NW Sydney / Alice	306°45'	1570	9.15	1
2	EXT SW Sydney / Alice	329°15'	1750	8.86	2
3	INT " " "	301°15'	1751	6.33	3
4	EXT SE con. Adelaide / VICT.	330°30'	1739	5.18	4
5	INT " " "	321°15'	1798	5.97	5
6	VICT. / Melbourne	314°30'	1814	6.25	6
7	SW. Melbourne	313°30'	1599	7.95	7
8	NW Venice	360°30'	1591	18.95	8
9	SE. EXT. Venice / Calcutta	258°45'	1804	17.02	9
10	INT. SE " "	257°01'	1664	17.05	10
11	Quebec / Calcutta INT.	261°30'	1762	16.15	11
12	" NW.	267°01'	1653	17.51	12
13	Bombay	267°45'	1684	16.88	13
14	INT. Bombay / Calcutta	264°30'	1720	15.54	14
15	EXT. Calcutta / Sicily	271°00'	1743	13.83	15
16	INT. " "	269°30'	1685	14.59	16
17	NW EXT. Sicily	278°30'	1762	17.22	17
18	INT. NW Sicily	275°30'	1539	17.18	18
19	NB. Melbourne	314°45'	1650	7.91	19
20	INT. NW Sydney / Alice	367°30'	1567	8.86	20
21	Melbourne / New South Wales	312°30'	1644	7.47	21
22	New South Wales - end.	307°00'	1635	7.53	22
23	L. London, NW. end, under Munich	343°45'	1474	11.63	23
24	Lower London SE. end	340°00'	1600	10.41	24
25	INT. Milan / Vienna	318°30'	0997	13.69	25
26	Quebec	264°15'	1774	17.08	26
27	P.P.O. 1 → France Post Dammun Line	70°30'	2165	1370	27
28	(Andy's excavations)				28
29					29
30					30
31					31
32					32
33					33
34					34
35					35
36					36
37					37
38					38
39					39
40					40