

1995

## PVN-072-Kindon-Field Notes-1995

Andrew Kindon  
*Kenyon College*

Follow this and additional works at: <https://digital.kenyon.edu/honduras>



Part of the Archaeological Anthropology Commons

---

### Recommended Citation

Kindon, Andrew, "PVN-072-Kindon-Field Notes-1995" (1995). *Four Valleys Archive*. Paper 8717.  
<https://digital.kenyon.edu/honduras/8717>

This Field Notes is brought to you for free and open access by the Anthropology at Digital Kenyon: Research, Scholarship, and Creative Exchange. It has been accepted for inclusion in Four Valleys Archive by an authorized administrator of Digital Kenyon: Research, Scholarship, and Creative Exchange. For more information, please contact [noltj@kenyon.edu](mailto:noltj@kenyon.edu).

1/30/95

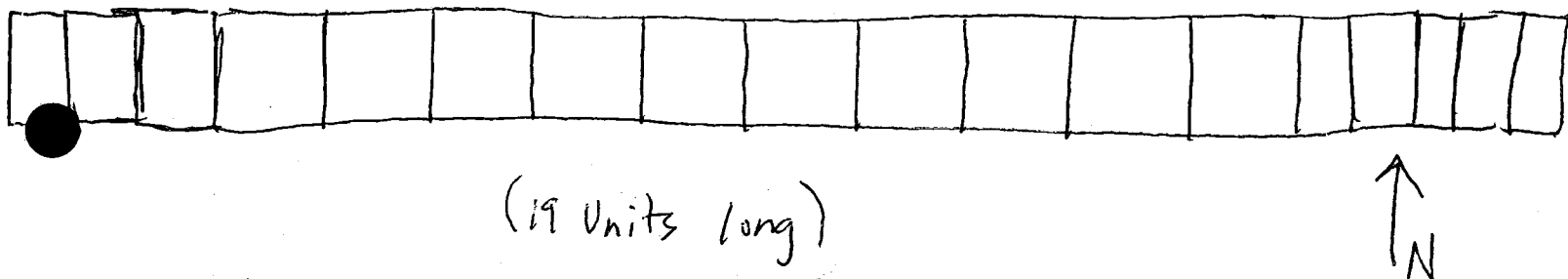
We arrived at the site today around 7:30 A.M. The staff were assigned their structures, while the undergraduates were given free reign to choose their own structures. It is a pleasantly warm morning, slightly overcast. I was very sick last night, and this morning I still feel rather queasy, so my level of concentration is rather low. Our objectives today are to set up our first excavation units on our structures. Tentatively, I have chosen structure <sup>53</sup>~~52~~ in operation 16 as my training structure. As of 9:30 A.M., I have staked out and strung an axial trench running 14 m, 80° W of N over structure 53 OP 16 and extending onto structure 52 OP 16. I have been giving the designation of suboperation E. The structure rises to a height of 91 cm. We left from the site at 11:30 A.M.

P95-72-2

1/31/95

We arrived at the site at 7:30 A.M. It is a cool, overcast day, it rained most of the night. I began surface collecting both structures, while my two workers, José and Manuel began excavating unit 1. During surface collection I found a large number of pottery sherds and two obsidian flakes. Unit 1 has been designated 20N-11W. I am having a lot of trouble understanding my workers. It has been a frustrating morning. All measurements will be taken from the northwest corner of each unit.

Map of axial trench:



The workers have been finding a modest amount of pottery in the first unit. We have also found a few very small pieces of baja reque and an obsidian flake. We also uncovered an obsidian blade, approximately 5cm long. Manuel and José dug down to 20cm on the first unit, rather than stopping at 10cm. So Lot 2 will be Unit 1, 1-20cm.

Finishing Unit 1, 1-20cm, the workers began Unit 2, 1-10cm, which will be Lot 3. Unit 2, 1-10cm has yielded very few artifacts, only a few pieces of pottery, I believe. I may need to change my principal corner from the NW corner of the unit to the NE. The workers seem to favor this.

At 10:30 we finished Lot 3 and began work on Level 2 of Unit 1, 20-30cm. This will be Lot 4. This unit has yielded a substantial amount of sherds, and another, very small obsidian blade was found. A small animal bone was also recovered. We left the field at 11:30 A.M.

P95-72-3

2/1/95

I arrived in the field today around 8:20 A.M. We had trouble with one of the vehicles, so some of us had to stay behind and wait for the second trip. Once again, I am feeling slightly sick and weak. Manuel and José were waiting when I arrived, and I had them start the third level of unit 1, 30-40 cm. This will be lot 5. It is another cool morning, with overcast skies. We have uncovered a cut block in the center of the western wall of unit 1, it is as yet impossible to tell whether or not it is part of a standing wall or not.

\* Manuel has also pulled two large sherds and the ground stone leg of a metate out of the upper surface of level 2 of Unit 2.

I have not decided yet whether to bag them for safekeeping until we begin excavating that level or not. They were located 22 cm E and 58 cm S of the NW corner of Unit 2.

Another obsidian blade has been pulled from Unit 1, level 3 (Lot 5)

Around 9:45 A.M., we finished Level 3 and began level 4 of unit 1. This will be Lot 6. We have uncovered three pieces of polychrome pottery, apparently from the same piece. As we excavate deeper, the quantity of tiestos ~~does~~ not seem to be dropping. In this level we have found an imitation marble molded bowl fragments and a fragment of a stamp. José and Manuel finished Level 4 of unit 1 at 11:40 A.M., and the students departed for lunch.

We returned to the field at 1:50 P.M., and I had José and Manuel begin excavating Level 5 of unit 1 (Lot 7). There has still been no discernible change in soil color, but starting in level 4, the soil became much more compacted. We still have not reached a sterile level, although the quantity of artifacts has greatly decreased. We finished the level at 2:45 P.M. Manuel found a small clay bead in the bottom of the level. We left the site at 3:00 P.M.

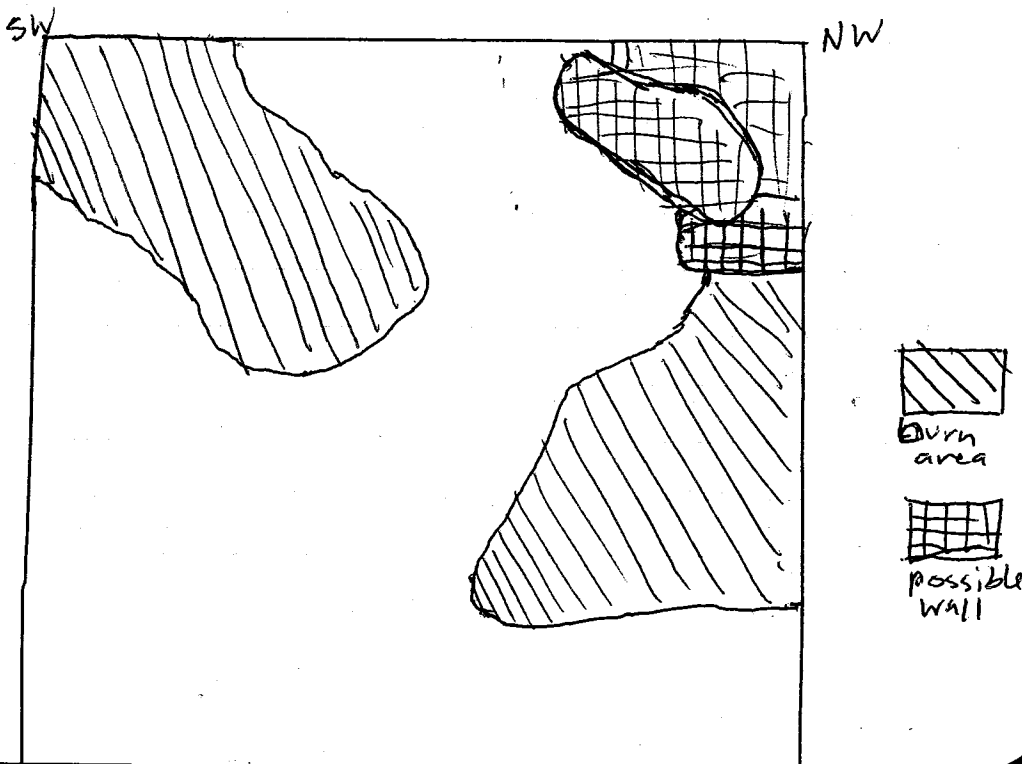
P95-72-4  
2/2/95

This morning we arrived at the site at 7:30 A.M. I started José and Manuel working on Level 6 of Unit 1, 60-70 cm. This will be lot 8. Once again it is a cool, overcast morning. Along with the large cut block that emerges from the western wall of unit 1, what appears to be the continuation of the wall, or at least a relatively clean concentration of rocks can be seen in the NW corner of the unit. We have found a small deposit of shells in the NE corner of the unit, and we have apparently come to a soil change, which we are presently uncovering. The soil change occurs at approximately 70 cm below ground level, 169 cm below datum point. The soil changes from a light brown sandy, fine loam to a fine, reddish silty loam.

The workers have explained to me that rather than a color change, we have found a cooking hearth, which extends across the entire western half of the unit. There are two concentrations of burn areas, one in the SW corner of the unit, and one in the NW corner of the unit, extending from what may be a wall corner. There is also a definite concentration of sherds in these burn areas.

The area in the SW corner is more concentrated.

We collected all the artifacts on the surface of these burned areas. These will be classified as lot 9.



PVN95-72-5

2/2/95 (cont'd)

We have begun excavations on Unit 2, level 2, 10-20 cm. This will be Lot 10. This is the level from which Manuel already pulled two large shards and the leg of a metate (or perhaps a fragment of a mano). This level did not yield a large amount of artifacts. A number of large stones are beginning to appear at the bottom of the level, but they do not appear to follow any obvious configuration. We will begin excavating level 3, 20-30 cm, which will be Lot 11. We have found a large fragment of a stamp in the NE corner of Unit 2.

It appears as if we may be uncovering a wall running N↔S along the W edge of Unit 2 (which intersects the wall which may run E↔W along the N edge of Unit 2). We have finished level 3, more rocks have been uncovered. We will stop excavating for the day at 11:20 A.M.

2/3/95

We arrived at the site at 7:30 A.M. I had Manuel and Jon begin on level 4 of unit 2, 30-40 cm (Lot 12). We will begin by removing the wall tumble which takes up a large part of the pit. The bottom of this level has yielded some rather large trestos, we may be approaching a living surface. We have reached the bottom of level 4, and have still not been able to discern any definite wall lines, so we shall excavate ten centimeters more. This will be Level 5 of Unit 2, 40-50 cm (Lot 13). As we work back from the E edge of Unit 2, removing tumbled rocks, we have found a deposit of rather large trestos. The concentration is 50-60 cm E of NW corner and 80-90 cm S of NW corner. We have begun Level 6 of Unit 2, 50-60 cm (Lot 14). We have continued to find trestos concentrated in the same area, and we have found the head of a figurine which the workers say is a crocodile. It looks more like a wolf or a horse to me. We still search for a clear wall line. Further excavation shows that there is no wall running E↔W along N edge of Unit. These stones were removed.

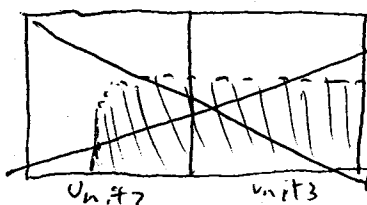
PRN 95-72-6

2/3/95 (cont'd)

We've spent most of today clearing more rock out of level 6 of Unit 2. We still have not found the wall line. We'll continue clearing on Monday morning. We left the field at about 11:45 A.M. It has been a very warm, sunny day.

2/6/95

We arrived at the site at 7:30 A.M. It is a cool morning, with moderately cloudy skies. The sun is already shining through. It rained heavily over the weekend, and the pits are filled with mud. I'm unsure whether this should be cleaned out before continuing excavation or not. We'll continue level 6 of Unit, clearing more wall tumble. This morning I have sketched a map of my axial trench on graph paper. We have reached an area in about the western  $\frac{1}{3}$  of Unit 2 which contains very concentrated rocks - we believe this may be fill, the wall apparently was very badly preserved. It may also have been a late addition to the original structure. Now we will take unit 2 down to the level of the burned area in Unit 1 - about 65 cm. This will be level 7 of unit 2, lot 15. We have finished level 7 of unit 2. The burned area from Unit 1 only extends 2-3 centimeters into the SE corner of Unit 2, but there are still several tiestos lying flat upon the surface of this area. They may be collected as a separate lot. Now we will begin level 1 of Unit 3. 0-<sup>15</sup> cm, lot 16. We have reached the level of Unit 2. Ed has directed me to now take out the tumble that runs along the south edge of Unit 2/Unit 3. It is possible that we have a corner of a wall in the NW corner of Unit 2, running westward into Unit 3.



This assumption is not certain. The tumble/possible fill from the south edge of Unit 2/Unit 3 will be classified and collected as Lot 17. We now have found a wall base stone approximately parallel with the beginning of Unit 3 in the SE corner. We will take out the rocks in the NW corner of Unit 2 in order to better define the wall base. My diagram above is now inaccurate. We will continue with Lot 17.

P95-72-7  
2/6/95 (cont'd.)

Unit 2 is yielding a very confusing array of rocks / possible wall lines. For this reason, we'll clean what we have done so far and end Lot 17. Lot 16 will consist of material taken from Unit ~~3~~ ~~4~~ from 0-15cm. The top level of Unit 3 has yielded many tiestos, and a very clear wall line has been exposed. We will end for the day by finishing Lot 16. Tomorrow we will start on Level 1 of Unit 4, 0-~~15~~<sub>10</sub>cm. That will be Lot 18.

2/7/95

We arrived at the site at 7:35 A.M. It is a very cool, very foggy morning. Manuel and José will begin excavating Level 1 of Unit 4, 0-~~15~~<sub>10</sub>cm. This will be Lot 18. After consulting with Ed, I have decided to temporarily stop working on Lot 18 and go back to concentrate more on the confusing (possible) structures in Units 2+3. There appears to be a clear wall line running N/S across Unit 3. If this is the case, it is possible that the structure in Unit 2 may be part of a half-circle construction, which is very rare at this site. We are currently excavating a bit more in Unit 3 in hopes of further delineating the wall line. This is classified Lot 19. It is uncertain whether or not the wall continues to and intersects with the North wall of Unit 3. For this reason, and to clarify the features in Unit 1, 2+3, we will open up 3 units directly to the North of Units 1, 2, +3. The first unit will be Unit 20, and we will excavate the first level from 0-20cm. This will be Lot 20. We are leaving a 30cm wide section of Unit 20 intact along the S. wall of the Unit. This will be excavated later as a single lot. Now we will excavate Unit 20 from 20cm+. This will be Lot 21. We are making steady progress in Unit 20. I believe we have found a wall line running along the extreme W edge of Unit 20. Further excavation will clarify this. We left the field at 3:00 P.M.

2/8/95

Once again we have arrived at the site at 7:30 A.M. We will continue excavating down in Unit 20. We have been finding a large amount of both trestos and obsidian in this unit, and the wall line is becoming more clear. As we have excavated lower, the wall line appears to become less clear. I'm very frustrated with the excavations, as walls seem to appear and disappear as we excavate. Ed has looked at Unit 20 and has said that he believes I do have a wall, perhaps of a late addition to the original structure, built over a previous living floor, which would account for the trestos that appear under the wall. Now we will begin excavating Unit 21, 0-35 cm, Lot 22. 35 cm is the depth of the first clear stone of the wall in Unit 20. We have found a large, cut-stone block extending from the southwest corner of Unit 21, which is in alignment with the large cut-stone block that extends from the NW corner of Unit 2. We are clearing Unit 2 down to 35 cm and back to this block to further expose the wall. This afternoon we begin by removing the rock from Unit 21 back to a line of rocks directly in front of the possible wall line. Ed thinks this line may be a continuation of the strange curved construction in Unit 2. This is still Lot 22. Once again, it appears like everything that looked promising is absolutely nothing. We will move to Unit 22 and excavate down to the level of Unit 3 where Ed believes the original frontal wall of the structure may be. This will be Lot 23. Lot 22 will be redefined as Unit 21, 0-5 cm all, 5-35 cm ~~lot~~ E  $\frac{1}{3}$  of Unit.

2/9/95

We arrived at the site this morning at 7:30 A.M. Manuel and Jose continue to excavate Unit 22. We have found two || wall lines, very close together, running N/S along the E edge of Unit 22. We will continue by opening up Units 39 & 40. First we will excavate Level 1 of Unit 39, 0-20 cm. This will be Lot 24. In Unit 21 we have clearly defined a ~~stone~~ wall, about 44 cm thick, running N/S just E of the W. edge of Unit 21. The lines in Unit 22 may either be

P95-72-9  
2/9/95 (cont'd)

additional walls, or they may be part of a wide terrace. After opening Unit 39, Ed directed us to return to Unit 22 and excavate further. Having done so, it appears that the possible walls of this Unit are actually just advantageous arrays of tumble. There is the slight possibility of a wall line extending into the Unit from the SE corner. We have removed the rest of the rock down to 40 cm, and we have retrieved large amounts of trestos from the Unit, including several very large sherds. It has taken us the entire day to finish lot 23. We have found a massive amount of sherds in this lot. Tomorrow we will begin excavating Unit 23, where it appears another wall will be found.

2/10/95

We arrived at 7:30 A.M. as usual. It's a cool, misty morning, with the promise of getting very hot. We will begin today by opening excavation in Unit 23, Level 1, 0-55cm, Lot 25. I have instructed two more workers from Dan, I will have them begin excavating on the W. side of structure 530P16. Right now I plan on opening Unit 14. This will be Lot 26, Level 1, 0-20cm. I have decided to use the name of punk rock musicians for my features. The wall extending across Unit 21 has been named Jello, for Jello Biafra, lead singer of the Dead Kennedys. The feature in Unit 20, if it proves to be a wall, will be Klaus, for Klaus Flouride, bass player for the DK's. My two new workers have finished Level 1 at Unit 14, and will proceed with Level 2, 20-50cm. This will be lot 27. We have uncovered in cross section a layer of very flat trestos in Unit 23 at a depth of 35 cm. We will end lot 25 where we are, about 40cm in from the E edge of the Unit, and begin a new lot, which will be Unit 23, 0-55cm, 60cm from Wedge. This will be lot 28. We have come down upon a previous living surface with large sherds smashed upon it. The sherds appear to be a plate and an incensario lid. These sherds will be collected as a separate lot. This will be Lot 29. The sherds were located at 47cm from surface level, 99cm below datum point, 66cm S of N wall, 53 cm E of W. wall.

p95-72-10

2/10/95 (cont'd)

We have collected the trestos from the living surface and will now continue down to 55 cm in Unit 23. This will be Lot 30. The wall line extending across Unit 22 has been named D.H. Peligra - The drummer for the Dead Kennedys. We will finish Lot 30 before the end of the day. We have gotten many trestos from this Unit & Lot, including an almost intact whistle in the shape of a bird. The two new workers have finished Level 2 of Unit 14<sup>(Lot 27)</sup>, which has yielded a good amount of trestos and obsidian, and a large amount of small snail shells. They have begun excavating Unit 13, 0-~~15~~ cm Level 1, Lot 31. Manuel and José will spend the last part of the day removing more rock from Unit 3. This will be Lot 32, 20+? cm. We left the field at 3:00.

2/13/95

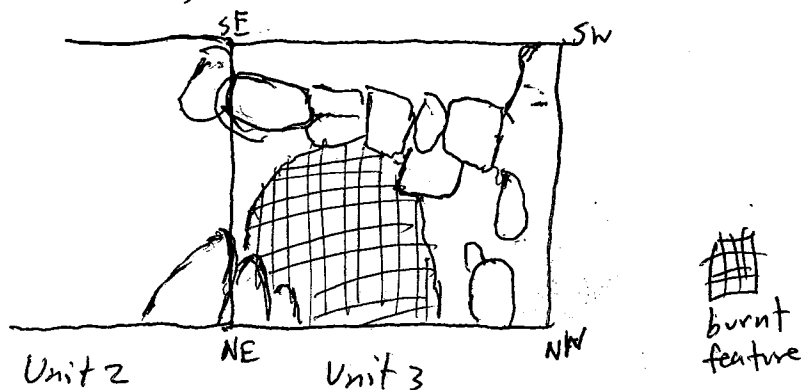
We arrived today at 7:40 A.M. We will continue on Lot 32, Unit 3, 20-? cm. There are new markers here today, so I will probably have at least two new ones. We have uncovered ~~an~~ living surface on the ~~W~~<sup>NE</sup> edge of Unit 3 at the same depth as that of the one found in Unit 23A <sup>extending W. into Unit 4</sup>. We will take this out as a separate Lot. Lot 32 will include artifacts taken from Unit 3, 20-~~50~~ cm.

I have two new workers, José (Don Luis' older brother) and Victoriano, who I have started on Level 2 of Unit 13, 15-50 cm, Lot 33. José and Manuel have finished Lot 32. I want to go lower in Unit 3 to see if I can figure out what the walls are doing here. This will be Lot 34, Unit 3, 50-~~60~~ cm. We have found another cooking surface in Unit 3, at a different level from the ones in Unit 1. This feature extends from the ~~NE~~<sup>SE</sup> corner of Unit 3, and is at a lower level from the living surface in Units 4 & 23. There also appears to be a wall running E/W, starting in Unit 2 and running through Unit 3, connected to none of the other walls. This wall will be named East Bay Ray - Guitierrez for the Dead Kennedys. ~~It is~~ The buried feature is located 60 cm below ground level, 141 cm below datum level. It extends roughly 20 cm out from NE.

P95-72-10

2/13/95 (cont'd)

corner of unit three, abut to E wall, and about 70cm along N wall.



We will end Lot 34 at the level of the feature 60cm deep, and move to Unit 4, where we will excavate down to the level of the living surface, 35cm. This will be Lot 35. Don José and Victoriano have finished Level 2 of Unit 13, Lot 33. They have found a number of shell fragments, and once again many small snail shells. They will next excavate Unit 12, Level 1, 0-20cm. This will be Lot 36. Lot 37 will consist of the sherds collected from the living surface of Unit 4. We have pulled massive amounts of fragments from Lot 35 - more than from any other lot so far. This is very strange, for it is only 30cm deep, and it is located on the middle of the structure, rather than off the base or on the platform. Don José + Victoriano have begun Level 2 of Unit 12, 20-50cm, Lot 38. José and Manuel will only finish Lot 35 today - we will start by collecting the sherds from the living surface tomorrow morning (Lot 37). We left the field at 3:00 P.M.

\*We had time before leaving the field to collect the living surface (Lot 37).  
2/14/95

We arrived today at 7:30 AM. I and Don José and Victoriano continue working on Level 2 of Unit 12 (Lot 38). Manuel <sup>and José</sup> have started on the final level of Unit 4, 35-60cm. This will be Lot 39.

D.H. appears to extend across Unit 4, intersecting East Bay Ray, and continuing S. - E.B.R. appears to continue W. into the next Unit. We have pulled massive amounts of sherds from Lot 39 - we now believe this structure may have consisted of a series of rooms that were

P95-72-12

2/14/95 (cont'd).

filled in with broken pottery when they had no longer been used. A complete and still functioning ocarina was found in the NW <sup>corner</sup> of Unit 12. They are now starting to excavate Unit 11, which will be Lot 40. Don Jose and Victor have finished Lot 40 and have begun on Level 2 of Unit 11, 20-50cm, Lot 41. There is a lot of wall tumble here, and I believe we will probably find a wall in this lot. Manuel will finish Lot 39 by the end of the day - we have pulled a massive amount of shards from this lot, and East Bay Ray continues W. into Unit 4. We have also uncovered two walls coming into a corner in Unit 11. These walls will be Lux Interior (for the wall running N/S) and Poison Ivy (for the wall running E/W). We will start tomorrow on Level 1 of Unit 5, 0-20cm, Lot 42, and will also continue excavating Level 2 of Unit 11 (Lot 41). We left the field at 3:00 P.M.

2/15/95

We arrived this morning at 7:35 A.M. Don Jose and Victoriano will continue excavating Level 2 of Unit 11 and clearing the wall. Jose and Manuel have begun Level 1 of Unit 5, 0-20cm (Lot 42). It now appears that we have a wall running N/S across the middle of Unit 11, <sup>(Lux)</sup> with another wall intersecting the first wall, running E. <sup>(Ivy)</sup>. They will now move forward to Unit 10, Level 1, 0-20cm, Lot 43, to follow Poison Ivy Eastward. Lot 43 has been completed, with only a small amount of trestos being recovered. They will continue with Level 2 of Unit 10, 20-50cm, Lot 44. We have finished Lot 42, and will continue by excavating Level 2 of Unit 5, 20-40cm (Lot 45). We have finished Lot 44 and will proceed to Unit 9, Level 1, 0-20cm Lot 46. We are still following Poison Ivy Eastward. We have finished Lot 45, and have found a cut block that appears to be the corner of a wall running E/W - We will continue with Lot 47, Unit 5 Level 3, 40-60cm. It appears as if Poison Ivy may intersect another wall running N/S in Unit 9. Tomorrow we will continue with Lots 46 + 47. We left the field at 3:00.

2/16/95

We arrived this morning at 7:20 A.M. We will continue work on Lots 46 & 47. In Unit 9, ~~Poison Ivy intersects another large wall running N/S. This wall will be called D. Boon - the end singer and quit it for the moment.~~ Poison Ivy continues east, running parallel to the main trench. False Alarm!! Poison Ivy does not intersect a wall in Unit 9 - it was only concentrated surface tumble. D. Boon will be saved as a possible name for other features. It appears as if Manuel and Jose are uncovering a stone floor or terrace in Unit 5. We have found a single human tooth in close context with this floor. The stones at the bottom of Unit 5 fail to tell us anything decisive. It looks as if East Bay Ray may only extend from Unit 2 into Unit 3, and slightly into Unit 4 where it may meet a corner and stop. The other wall runs south from E. B. R. We will now move up to Unit 6, Level 1, 0-20 cm Lot 48. We have finished Lot 46, and will continue by moving on to Unit 8, level 1, 0-20 cm, Lot 49. Because of the small amount of artifacts found in the top 20 cm of Unit 6, and because most of the unit is taken up by what appears to be the end of Poison Ivy, we'll include the entire Unit, 0-65 cm in Lot 48. This has been an extremely frustrating day - We haven't been able to find a wall in Unit 6, although there is a very heavy concentration of tumble there, and it appears as if Poison Ivy may end abruptly in an equally confusing jumble in Unit 8. We'll pick up in these units tomorrow morning.

2/17/95

We arrived today at 7:25 A.M. It is possible that we uncovered a poorly preserved wall like in Unit 6, so we'll move up to Unit 7, and return to Unit 6 later if need be. This is the final unit of my axial trench, and will be Lot 50. We continue excavating in Unit 8. We have found another complete and functioning whistle, this time in Unit 8. Poison Ivy terminates in Unit 9 with a nice cut stone corner. It appears as if a smaller line continues eastward from this corner, however. This smaller wall will be named D. Boon. It also appears as if there are two parallel lines running E/W along the N & S walls of Units 6 & 7 - with a large amount of tumble occupying the space between.

P95-72-14

2/17/95 (cont'd.)

We will excavate lower in Units 6 & 7 to see if this hypothesis is true. This will all be included in Lot 50. We have finished Lot 49. After morning break, Don Jose and Victor will start excavating Unit 39, Lot 24 again, in hopes of finding the extension of Klaus northward. There is not a line <sup>continuing from</sup> ~~connecting~~ Poison Ivy eastward. Instead there is a space of about thirty centimeters and then another corner from which a wall runs eastward and one south. The eastward wall will be D. Boon, the southward one will be Kira - it is possible that these wall are part of a platform, as is Poison Ivy and Lux Interior. The wall running northward from Poison Ivy's west corner will be Lint (base player for Operation Ivy) - Oops - I was wrong - D. Boon does connect with Poison Ivy, and then runs eastward, becoming part of what looks like a platform. We have finished Level 1 of Unit 39, 0-20 cm (Lot 24), we will continue with Unit 39, Level 2, 20-50 cm (Lot 51). We will finish Lot 50 at 30 cm in Unit 7. Tomorrow will excavate more in this unit in an attempt to clarify the wall lines. We will continue with Level 2 of Unit 39 (Lot 51). Right now it does appear as if Klaus continues north.

2/20/95

We arrived today at 7:30 A.M. We will start Level 3 of Unit 39, 40-50 cm, Lot 52, and we will start Level 2 of Unit 7, Lot 53. Klaus continues northward through Unit 39, and D. Boon continues eastward through Units 9, 8, 7, 6, ~~starting~~ starting on the W. edge of Unit 7, <sup>D. Boon no longer runs</sup> ~~starting~~, E/W, but begins to head in a slightly SE direction, veering off so that it eventually only slightly sticks out of the S. edge of Unit 6, where it appears to take a corner. It also appears as if Klaus may come to a corner just short of the N edge of Unit 39, we will try to remove the earth from this ~~small~~ small 10 cm space in order to determine if it does actually come to a corner. Klaus comes to a corner about 30 cm S. of the N. edge of Unit 39. We have also come down on another burnt earth feature in this small space between wall and Unit edge. We will move forward to Unit 40, Level 1, 0-20 cm (Lot 54) to follow the corner W. and see if it intersects Jello.

2/20/95 (cont'd)

The burn feature in Unit 39 extends southward underneath Klaus - it is obviously from an earlier period of habitation. I have not yet had a chance to take measurements on the feature, but think it is safe to assume that this feature is contemporaneous with the one found in Unit 1. With further excavation in Unit 7, we have found that D. Boon extends very deeply - currently it appears that it was about 50cm high, by far the most substantial wall so far found in these excavations. We will work back westward, following D. Boon to determine the extent to which this fact holds true along the entire wall. This will all be included in lot 53. I have decided to try to clean up around the line of rocks <sup>(East Bay Ray)</sup> running through Units 2, 3, 4, & 5 of the main trench, in an attempt to determine how far the line extends and if ~~it~~ it has any intersections with other walls. The artifacts found here will be included under Lot 55. We have finished Level 1 of Unit 40. Jello also continues northward. We will continue with Unit 40, Level 2, 20-40cm, Lot 56. I have found another living surface, this one in Unit 3, contemporaneous with the burn feature in this unit, except that the burnt feature is on the N side of E.B. Ray, and the floor is on the S. side. It appears that E.B. Ray may intersect a line running only southward, and then intersects another wide line running both N/S, then stops. Further excavations will be needed to verify this, however. Because of the multiple levels of living surfaces, it appears that Jello, Klaus, and D.H. all were built later and over top of E.B. Ray and it's possible accompanying lines. With further excavation, it looks as if D. Boon originally ran in the slightly SE direction, starting from the corner of Poison Ivy and Lint. The line of rocks running E/W appears to have been built over D. Boon. This line will be named Chavo - one of Black Flag's early lead singers. I now have my workers digging a little bit deeper behind what may be a line of rocks intersecting the end of E.B. Ray. Klaus takes a corner about 30cm S of the N. edge of Unit 39, then runs W. to intersect Jello, forming a small terrace off the front of Jello. The small connecting wall between Klaus and Jello will be called Lee Ving - lead singer of FEAR. Tomorrow we will open up new Units, one to trace Lux's path N., and one to trace Jello's.

P95-72-15

2/21/95

We arrived this morning at 7:30 A.M. Today we will begin by opening Unit 59, level 1, 0-20 cm (Lot 57) in order to follow Jello northward. We will also begin a new suboperation, 16K to follow Lux Interior northward. The first unit in this suboperation will be Unit 1K, level 1, 0-20 cm, Lot 1. Unit 1K is located directly to the north of the main trench, extending from Units 12+11. The W. edge of Unit 1K starts 25 cm east of the west edge of Unit 12. We will leave a thirty centimeter bulk to preserve the axial trench profile. We have finished Lot 1 of 16K and will continue excavating deeper to clear Lux. This will be Unit 1K, level 2, 20-50 cm, Lot 2. We have finished lot 57 and will continue with Lot 58, Unit 59, level 2, 20-65 cm. While excavating Lot 2K, we have come down upon a very flat layer of large rocks, which extends W. from Lux and appears to perhaps be a small terrace running parallel to Lux. we will back up another meter in attempt to clean off and better define this feature to determine what exactly it is. This will be Sub op 16K, Lot 3, Unit 2K, <sup>level 1</sup> 0-20 cm. We have finished Lot 3 + will begin Lot 4, Unit 2K, level 2, 20-50 cm. It began raining today at about 10:30 A.M. We worked until 12:20, finishing Lot 58. It appears that Jello may take a corner and run W. to D.H. Peligra. We will open up a new unit tomorrow to investigate this. We left the field at 11:45 A.M.

2/22/95

We arrived today at 7:25 A.M. It's sunny and warm - hopefully no rain today. Manuel and Jose continue working on level 2 of Unit 2K, Lot 4. Don Chepé and Victor have opened a new Unit, Unit 41, which is 1 m x 1.5 m. This excavation will look for the possible extension of D.H. Peligra Northward, and a possible wall running westward from Jello, connecting Jello and D.H. Lot 59 will be Unit 41, level 1, 0-20 cm. We have uncovered another feature in Unit 2K. It is a line of cut blocks, only one block deep and one block wide, running along the base of Lux Interior. This may be a previous construction, or it may be a very narrow step or terrace. This feature will be named Milo - was singer of The Descendants. There seems to be a concentration of small snail shells and animal bones just off the W. edge of Milo - not enough to constitute a midden, however.

P95-72-17

2/22/95 (cont'd)

There is also a large amount of snail shells being found in Unit 41. They are close to the surface (7-10 cm deep) and seem to be concentrated mostly on the westernmost 50cm of the Unit. They are roughly in close contact with the tumble we are removing. We have also found a rather large animal bone in this Unit, which will be tagged separately. We have finished 16K/4 and will move on to 16K/5. This lot will consist of Level 1, 0-20 cm of Unit 3K, which is a 1m x 1.5m Unit. We are following Lux and Milo north. We have finished both the first levels of Units 41 + 3K. After break we will start Level 2 of both units, (lots 16E/60 + 16K/6). We will finish both lot 16E/60 and 16K/6 at the end of the day. It is unclear whether Milo and Lux continue N. or not. Both lines become very jumbled. I want to ask Ed what he thinks before I proceed further. D.H. Peligra does appear to continue northward, while Jello does not. We found many firestones under Jello today. I believe we may have to tear out some, if not all of Jello. We found four large mano fragments in lot 16E/60.

2/23/95

We arrived today at 7:25 AM. It is overcast and very cool. We will continue removing rocks from the same units and levels we were working on yesterday, but any artifacts found will be cataloged as new lots. Lot 16E/61 will consist of Unit 41, level 3, 50-60 cm, and lot 16K/7 will consist of Unit 3K, 50 cm-60 cm, cleared wall tumble. We have found two more fragments of manos in Unit 41. That makes a total of six found in this single unit. We have also found a clear wall in profile in the N wall at Unit 41. After clearing away the tumble from Jello, it appears there may be a doorway ~~through~~ Jello. We will next move over to Unit 60 (another 1m x 1.5m Unit) to clear the wall we have in profile. This wall will be Cheetah Chrome (from the Dead Boys). It appears that both Milo + Lux continue running parallel to each other northward. We will open a new unit, Unit 4K (1m x 1.2m) in order to follow these walls. Level 1 of Unit 4K (0-20 cm) will be lot 16K/8. We have finished 16E/61, it is still difficult to tell if D.H. continues, but Jello does have a break that appears to be a doorway.

P95-72-18

2/23/95 (cont'd)

Now we will return to Unit 20. I'm ~~not~~ thinking that Klaus and Lee Ving form the sides of a small platform/step up to the opening in Jello. We will excavate the SW corner of the unit to see if that is true. This will be Lot 16E/62. We have finished Lot 16K/8, and have gotten a large amount of trestles from it. We will continue to excavate deeper in Unit 4K, this time Level 2, 20-50cm, Lot 16K/9. We have finished Lot 16E/62, and my idea was correct. Lee Ving and Klaus form a small terrace or step with another wall (Ian) which lies directly in front of the doorway in Jello. The platform measures roughly 1m x 1m. We will now move on to excavate a new unit. As stated earlier, this will be Unit 60, level 1, 0-20cm, Lot 16E/63. We will be following Cheetah Chrome westward. We have finished Lot 16E/63 and will continue deeper with Lot 16E/64, Unit 60, level 2, 20-40cm. Cheetah is clearly delineated, and it is possible that we have a wall extending off to the north from the end of Cheetah. This should become clear as we excavate deeper. Meanwhile, in Unit 4K, it appears that Lux comes to a corner with a wall running eastward... possibly Cheetah??? Mike also appears to come to an end - we need to go a little deeper to see exactly what it does. Ed has begun drawing my trench profile, and I have been helping him. We have finished both lots, and will begin new ones tomorrow.

2/24/95

We arrived today at 8:00 a.m. we had a flat tire on the truck, so we left later than usual. Today we'll continue clearing tumble away from Cheetah Chrome in Unit 60. This will be Level 3, 40-60cm, Lot 16E/65. Manuel and Jose will begin a new unit, 5K, to clarify what happens with Lux - I believe it turns a corner and runs eastward. This will be Lot 16K/10, Unit 5K, level 1, 0-20 cm. We have finished Lot 16K/10. A beautiful worked obsidian blade was found in this unit. We will continue deeper with Unit 5K, level 2, 20-50cm, Lot 16K/11. We have finished Lot 16K/11. There is a very irregular line of rocks running westward from Lux. We have no other option except to follow it. We'll ~~not~~ open Unit 6K, Level 1, 0-20 cm, Lot 16K/12. We have finished Lot 16K/12. It does appear as if the line does continue east, perhaps coming to a corner with Lin. We will dig deeper to test this hypothesis. This will be Unit 6K, level 2, 20-50cm, Lot 16K/13. Meanwhile,

Cheetah Chrome intersects another wall running N/S. This wall will be called Stiv Batons (also at the Dead Boys. parallel to Cheetah, and also intersecting Stiv is another very shallow, but very neat double line of flat stones. This feature may be either a floor or a wall line. It will be called Pat Smear (guiltarist for the Germans). We left the field at 3:00 P.M.

2/27/95

We arrived today at 7:30 A.M. Jose and Manuel continue excavating Unit 6K, Level 2, 20-50cm, Lot 16K/13. Don Chapé and Victor have begun clearing tumble from just above and behind Stiv Batons. This will be Lot 16E/66. There may be another, slightly higher but parallel line running just behind Stiv. We are finding a rather large amount of small chunks of baja reqre directly behind Stiv. There is not a parallel wall - it was only tumble. I believe that after we are done excavating the lots we are currently working on, we will go back and take out the bulk that I left between the main trench and my lateral excavations. This should clarify the lower structures (the eastern structures). We have collectively decided to extend 50cm further east from Unit 60, in hopes of catching the northern end of Lint. Because of this, Lot 16K/13 only will go to 30cm. We will move onto Unit 7K, a 1m x .5m unit, Level 1, 0-20cm, Lot 16K/14. We have finished with Unit 60. As stated above, we have found a large amount of baja reqre here, almost as much as tiestos. Now we will go to the 30cm bulk left between Units 20 + 1 and remove that all as Lot 16E/67. Found under the layer of baja reqre and directly behind Stiv in Unit 60 is yet another burnt earth feature. This one is located 58cm below ground surface and extends the entire width of the Unit and from the <sup>western</sup> base of Stiv to the west wall of the unit. There are not many tiestos found here. We have taken out the bulk between Unit 20 + Unit 1, and will now move up to remove the <sup>(30cm)</sup> bulk between Unit 21 + Unit 2. This will be Lot 16E/68. We have found the n. corner of Lint. in Unit 7K. The wall connecting Lint and Lux will be called Poly Styrene. There appears to be another line running parallel to Lint that dies about 20cm to the w. of Lint and continues north.

P95-72-20

2/27/95 (Cont'd)

We have found Lint running north in Unit 7K. It continues north through the unit, meeting Poly Styrene <sup>(Lot 16K/15)</sup> about midway through the unit. We will now move on to Unit 8K, a 1.5m x 1m unit which will follow Lint south to meet the main excavation trench. After that we will clear away the earth and rubble from the top of the platform formed by Lint, Poison Ivy, Lux Interior, and Poly Styrene. This will hopefully shed light on the reason for Poly's much inferior quality as compared to the other three walls. Meanwhile, we continue to remove the bulk along the main trench's NE wall. We are now excavating the 30 cm bulk that was left between Unit 22 and Unit 3. This is Lot 16E/69. It looks as if Jello comes to a corner here and another wall continues westward from it, perhaps to meet D.H., forming the southern wall of the room formed by Jello and Chetah. If this line of rocks extending west from Jello is a wall, it is without a doubt one of the ugliest walls ever built. Keeping in mind the theory of this mound being composed of several different layers of habitation, it is possible that this wall was built over an earlier living surface. Ed has also suggested that all the sherds that were found in Units 2, 3, & 4 of the main trench may indicate that the people who lived in the room may have dumped fill over these earlier structures and then built this wall merely to support the fill, and it was not originally meant to stand on its own. Who knows??!! We will move up to remove the last section of bulk between Unit 4 + Unit 23 (Lot 16E/70). Hopefully this will enable us to see if D.H. and this rather ugly line of rocks meet to form a corner or not. We will continue excavating these same lots tomorrow morning. We left the field at three o'clock.

2/28/95

We arrived as usual at 7:30 A.M. I have told the workers to continue with the work they left off with yesterday. We have found D.H. continuing across to intersect East Bay Ray, just as I had hoped. The rather ugly wall between Jello and D.H. will be called Watty, after the rather ugly lead singer of the Exploited. There also appears to be a smaller line of rocks running parallel to D.H. and slightly to the east, which diverges from D.H. once it passes Watty (going south).

P95-72-21

2/28/95 (cont'd).

There also appears to be a large line running directly east from the crest of the West platform (formed by Lux, Ivy, Lint, and Poly). We will excavate more around it in an attempt to clarify it, and then move back to remove the dirt and tumble from the top of the platform. This will be Lot 16K/16.

Actually, the bulk between Subop 16K and the main trench will be 16K/16. The dirt from the platform will be 16K/17. We have finished Lot 16K/15. There is no line running off the platform but one does appear to run across the top of the platform. We have moved on to Lot 16K/16, which will contain the artifacts from the bulk between Units 1K + 2K and the main trench. We have also finished Lot 14E/20, from which we found a massive amount of sherds in the 30 cm bulk. We will now move up to a new Unit to follow Cheetah Chrome westward. This will be the beginning of a new Subop, 160. This unit will be Unit 10, Lot 160/1, Level 1, 0-20 cm. We have removed the bulk, and will not begin Lot 16K/17, which is the top layer of dirt and tumble on top of the western platform. This will be designated Unit 9K, a 1.5m x 1.5m unit.

We have finished the top 20 cm of Unit 10, finding only a small amount of sherds and some baji reque. The top line of Cheetah Chrome is beginning to show through. We will go down another 20 cm (20-40 cm, level 2) This will be Lot 160/2. Cheetah continues west through most of Unit 10, then it appears as if it may meet a cross wall and stop. If this is the case, the workers have ripped out a part of the cross wall. Tomorrow we may extend the unit 50 cm northward to see if we can tell if a cross wall exists. A large amount of baji reque was found in this unit, but only on the north side of Cheetah. Tomorrow we will also continue clearing the platform. We left the field at three o'clock.

3/1/95

We arrived in the field today at 7:35 A.M. We will continue clearing the dirt from the top of the western platform (16K/17). We will also continue trying to remove the tumble around Cheetah to see if we can find any possible cross walls (160/2). We will have to extend 50 cm north to Unit 20 (a 1m x .5m unit) to see if a cross wall exists. Lot 160/3 will include the contents from Level 1, 0-20 cm of this unit. We have found a clear wall line running E/W across the crest of the platform. This will be called Falling James. The artifacts collected

3/1/95 (contd)

From the small space between Poison Ivy and Falling James will be classified as Lot 16K/18. We have finished collecting Lot 16K/18. Now we will move to the north side of Falling James and will excavate here, removing the dirt and tumbled rock in an attempt to discern any patterns that may exist. This will be lot 16K/19. We have finished Lot 16O/3 - there is no cross wall, and it appears that Cheetah continues west after a small break caused by tumble. We will continue to follow its progress by opening up Unit 30, level 1, 0-20 cm, Lot 16O/4. After having cleared away the upper layers of the north side of the platform, and removing some of the basal rocks, also, I believe that Falling James may actually be the northernmost wall of the platform. We have found trestles in and under the floor between Poly and James, and one real, clear line can be discerned. Before removing all of Poly and the rest of the rocks, however, I will wait to consult with Ed. We have finished the first level of Unit 30. We will continue with level 2, 20- cm, Lot 16O/5. It appears as if we may be coming down on a large wall running N/S and crossing Cheetah. We will open a new Suboperation with Unit 1P. This will be the first unit in Sub op P and will expose the section of D. Boon that disappears into the S. wall of the axial trench. We will open the first level, 0-20 cm as Lot 16P/1. We have found a cross wall running N/S through Unit 30. Cheetah comes to an end just short of the wall (about 30 cm) and may have a smaller wall running north from it, or may have a doorway. The large cross wall will be called Exene. As of yet, it is too early to tell if D. Boon continues eastward, or if it has a corner in Unit 1P. Tomorrow we will resume excavations in Units 30 + 1P. We will also return to the west platform, where we will remove more rocks. It now appears that Lux may not exist - instead Poison Ivy and Lux simply run parallel to each other + both meet Lint on their east ends. Poly may also turn out to be nothing. We left the field at 3:00.

3/2/95

We arrived today at 7.30 A.M. Manuel and Jose will begin Level 2 of Unit 1P, 20-40cm, Lot 16P/2. It appears that D. Boon does not take a corner here, but instead continues in an easterly direction. Chape and Victor have opened a new unit, Unit 40, 0-40cm, Lot 160/6, to follow Exene north, and to expose more of the line running north from the end of Chetah. The line running north from Chetah stops after only about 40cm, probably forming a doorway into the small room formed by the north side of Chetah and the west side of Stiv. This short wall will be called Henry. Exene continues both North and south. We will open a new unit to follow her progress south. This will be Unit 50. Lot 160/7 will be from Unit 50, Level 1, 0-20cm. Pat has asked me to make a note of all the lots which contain bag's regge from the burnt feature in the small room formed by Chetah and Stiv. These are lots 16E/66, 160/1, 160/2, 160/3, 160/4, 160/5, and 160/6. We have finished both Lot 160/7 and Lot 16P/2. We will continue deeper in Unit 50, Level 2, 20-65cm. This will be Lot 160/8. In Unit 1P we have found the continuation of D. Boon, and also a line that runs off to the south from D. Boon. Before pursuing these lines, however, we will return to the western platform/structure and excavate further there. Lot 16K/20 will consist of the artifacts collected from the area of Unit 9K just N. of Falling James - a continuation of Lot 16K/19. We have cleared more rubble from the area just north of Falling James, and have defined a very small, narrow room, bounded by Lux, Falling James, Lint, and Poly styrene. There is a large doorway where Poly doesn't extend to meet Lux. We will now move to excavate deeper in the narrow space between Poison Ivy and Falling James. We have finished Lot 160/8, and Exene continues south. We will continue to follow this line by opening up Unit 60. This unit will connect to the main axial trench, while the end of Exene can be seen in the cross section. This will be Lot 160/9, and we will remove the entire unit as one lot. We have finished removing the earth from the narrow space between Falling James and Poison Ivy. We only got a modest amount of sherds and two pieces of bag's regge, so as of yet it is impossible to tell what this space was used for. We will open Unit 2P, level 1, 0-20cm, Lot 16P/3, to see if we can clear the wall going south off D. Boon.

3/2/95 (cont'd)

On Monday we will continue excavating level 1 of Unit 2P. We will finish Lot 160/9 by the end of the day. We left the hotel at three o'clock.

3/6/95

We arrived today at 7:25 A.M. Today we will continue excavating Lot 16P/3, and we will begin Lot 160/10, Unit 60, 65-70cm (east of Exene). We have finished Lot 160/10, there is a small wall running E/W, extending east from Exene. This will be called Tesco Vee. We will continue with Lot 160/11, Unit 60, 0-70cm (south and west of Exene). We have finished Lot 160/11. Exene comes to an end here, and Tesco Vee runs East/West, touching the end of Exene + continuing in both directions. We will now open a new Unit, Unit 70, to follow Tesco Vee East. This will be a 1m x .5m unit, will excavate the first level, 0-20cm, Lot 160/12. In Unit 2P it looks as if we have a line running south from D. Boon, and D. Boon may continue eastward. We have finished Lot 16P/3, and will continue deeper in this unit with Lot 16P/4, 20-40cm. We have finished Lot 160/12. We will excavate deeper here to pick up Tesco Vee. This will be Lot 160/13, Unit 70, Level 2, 20-70cm. We have finished Lot 160/13. Tesco runs about 70cm east of Exene and then stops. Tomorrow we will remove the last island of dirt, Unit 80. In Unit 2P it is still difficult to tell exactly how many walls we have and what they do. We will finish Lot 16P/4 and will perhaps move further east tomorrow to see if there is a line running east from D-Boon, which appears to end in this unit. We got a huge amount of sherds from Unit 70, along with some bone - I cannot tell whether it is human or not. We left at 3:00.

3/7/95

We arrived today about 7:20 A.M. We will begin today by opening two new units. We will <sup>open</sup> Unit 80, level 1, 0-20cm, & we will open Unit 3P, level 1, 0-20cm in order to see if D. Boon continues east or not. These will be lots 160/14 & 16P/5. We have finished Lot 160/14. We will remove the west of Unit 80 as one lot, 160/15, level 2, 20-70cm. We have finished Lot 16P/5. We will continue with Lot 16P/6, Unit 3P, level 2, 20-40cm. We have finished Lot 160/15, and have cleared all fill from the room behind Jello.

P95-72-25

3/7/95 (cont'd)

Tesco Vee comes to an end, and there are no cross walls going either north or south from its eastern terminus. We will now open a new Unit to trace Tesco's progress westward past Exene. This will be Unit 90, level 1, 0-20 cm, Lot 160/16. We have finished Lot 160/16. After lunch we will continue in Unit 90, excavating level 2, 20-40 cm, Lot 160/17. We have finished Lot 160/17. We will continue with Lot 160/18, Unit 90, 40-70 cm s. of Tesco Vee, in order to clear the south side of the wall. We have finished Lot 160/16. We have gotten a huge amount of firestones from this level. It appears that we may have some very shallow lines in this unit. We will dig a little deeper to see if this is the case. This will be Lot 160/17, Unit 3p, level 3, 40-55 cm. We will continue these lots tomorrow. We left the field at 3:00 P.M.

3/8/95

We arrived today at 7:20 A.M. We will continue with the same lots we were working on yesterday at the end of the day (160/17 & 160/18). We have finished Lot 160/18. It appears as if Tesco Vee comes to an end about 70 cm w. of Exene. We will excavate to the w. & n. of Tesco - this may be another doorway, or Tesco may take a corner and run north. With further excavation, we have found another wall running north from the w. end of Tesco Vee. We will follow this wall's progress north. It will be called <sup>Alice Bag</sup> ~~Geza X~~. We have also uncovered a very curious round structure directly off the e. end of D. Room. This feature is about 2 rocks deep, and its interior diameter measures about 60 cm. We have found no signs of burning here as of yet. This feature will be called Geza X. Lot 160/19 will be Unit 90, 40 cm - 65 cm w. of Alice Bag. We still are finding no artifacts inside Geza X. The feature seems to extend rather deep. We shall continue as deep as it goes. We have finished Lot 160/19. Now we will excavate within the confines of Alice, Tesco, and Exene. This will be Lot 160/20, 40-65 cm in Unit 90, ~~int~~ e. of Alice Bag & n. of Tesco Vee. I have decided classify the artifacts taken from inside Geza X as a separate lot. We have found very few artifacts here, only some chert cores. This will be Lot 160/8.

3/8/95 (cont'd).

As we dig down in Lot 160/20, we are finding large amounts of baja reqe, similar to that found in Unit 10, 20, & 60. We have reached the Bottom of the interior of Geza X, or at least we have reached the depth where the rocks stop. The interior is @ 45cm deep, from base of wall to top of wall. we found only lithics (including 3 small obsidian flakes and a chert core, & two chert flakes) and a fragment of a clay parrot head <sup>and five sherds</sup>. We will now move back to Unit 1P, where we will excavate from 40cm-60cm, Lot 16p/9. A shallow line of very large rocks has become visible running south from D. Boon in Unit 1P. We will clear the rest of the Unit and then probably return to Geza X, opening up a new unit to the south of this feature to catch its southern edge. We have finished Lot 160/20. As stated above, we have found a rather large amount of baja reqe. We will continue to follow Alice Bag north by opening up a new Unit to the North. This will be Unit 100, and Lot 160/21 will be from Unit 100, level 1, 0-20cm. Coming down to 20cm in Unit 100, we have found a large deposit of baja reqe at the bottom of the level, directly behind Exone. We have pulled a very large amount of baja reqe fragments from this area. We will now begin Lot 160/22, which will be Unit 100, 20-65cm w. of Alice Bag. We have finished Lot 16p/10. We will continue deeper with Lot 16p/11, 20-40cm. We are digging in Unit 4P, following the large line of rocks from Unit 1P (which will be called Mike Watt) south. We still need to open another unit to catch the southern edge of Geza X. We will end the day by finishing Lot 160/22. Tomorrow we will continue Lot 16p/11, & will start Lot 160/23, which will be a continuation of Lot 160/22.

3/9/95

We arrived today at 7:50 A.M. Pat, Ed, and Marne all came out today. I suggested that I remain here and continue excavations on 530p/16 as my project. They seemed to agree that that was a good idea. This morning there is a lot of mud in the trenches. It rained really hard last night. We will begin by continuing Lot 16p/11 and by beginning Lot 160/23, which will be a continuation of Lot 160/22. We have finished Lot 160/23. Alice Bag continues north - this is probably the best, most well-preserved walls we have found so far. We will continue

3/9/95 (cont'd).

to follow Alice's progress northward by opening a new Unit. This will be Unit 110, and Lot 160/24 will be Unit 110, level 1, 0-20cm. This will be a 1m x 1.25m unit. We have finished Lot 160/24. Alice appears to continue north, so we will do the same as yesterday, and excavate from 20-65cm on the west side of Alice. This will be Lot 160/25. We have also finished Lot 160/11. Mike Walt continues south, and there are several other possible lines above and to the west of Mike. We will open a new unit, Unit 5p to follow Mike south. This will be Lot 160/12, Unit 5p, level 1, 0-20cm. We have finished Lot 160/12. We have only found a modest amount of frostos in this lot. A line is beginning to show, but we will need to excavate deeper to tell if this is the continuation of Mike Walt or not. Lot 160/13 will be Unit 5p, level 2, 20-40cm. We have finished Lot 160/25. Alice continues to run north. We will open Unit 120 to follow this wall. Lot 160/26 will be Unit 120, level 1, 0-20cm. I have made some adjustments in an attempt to maintain my excavations as close to the original grid as possible, so this Unit is only about 50cm wide x 1m long. We have finished Lot 160/26. We will move on to Lot 160/27, Unit 120, level 2, 20-65cm W. of Alice Bag. We have finished Lot 160/13. Tomorrow we will start by opening a new Unit in Subop 16p to follow Mike Walt further south. We will also continue with Lot 160/27. We left the field at 3:00 P.M.

3/10/95

We arrived today at 7:20 A.M. We will continue working on Lot 160/27. Manuel and José are moving a pile of rocks and backdirt so we can open a new unit to follow Mike Walt south. This will be Unit 6p, level 1, 0-20cm, Lot 160/14. We have also finished Lot 160/27. Alice Bag becomes rather irregular in this lot, it may turn a corner here - it is difficult to tell. We will move on to open up Unit 130 in order to see if Alice continues north or not. This will be Unit 130, level 1, 0-20cm. Lot 160/28. We have finished Lot 160/14. We will move on to Lot 160/15, which will be Unit 6p, level 2, 20- cm. We have finished Lot 160/28. It does appear as if Alice continues north. We will excavate the west side of the wall as Lot 160/29. We have finished Lot 160/15. Mike Walt comes

3/10/95 (cont'd)

to an end here. I cannot tell if it has another wall running west from it or not. Before exploring this area further, we will return to open a new unit to the south of Geza X, in order to expose its southern edge and look for any related features. This will be Unit 7p, and we will begin with level 1, 0-20 cm, Lot 16p/16. We have finished Lot 16o/29. Alice Bay continues north. We will now open Unit 14o in order to follow Exene north, also. Since it appears that these walls run parallel to each other and are closely related, I am assuming that Exene will also extend as far north as Alice does. We will open Unit 14o down to 20 cm first. This will be Lot 16o/30. We have finished Lot 16p/16. We will dig deeper with Lot 16p/17 in Unit 7p, from 20-40 cm. We have finished 16o/30 - it appears as if Exene does continue north. To make sure, we will excavate down along the eastern face of Exene, 20-40 cm. This will be Lot 16o/31. While digging down in Lot 16o/31, we have found what looks like a line running east from Exene, about 25 cm from the N wall of the unit. Between this line and the unit wall we have found a large deposit of trestos, a large chert core, and brick refuse. We will leave this deposit intact until we are able to clear north and east of it to determine its size and shape. There also seems to be a large amount of trestos in the rest of the lot, also. We will finish both Lot 16o/30 & Lot 16p/17 today. We left the field at, 3:00 P.M.

3/13/95

We arrived today at 8:00 A.M. It's going to be a really hot day. We will begin with Lot 16o/32, Unit 14o, 40-60 cm east of Exene, and Lot 16p/18, 40-65 cm. in Unit 7p. We have finished Lot 16o/32. It seems as if Exene has disappeared in this unit. There is a line running east, though. This line will be called O. Now we will return to following Alice Bay north with Unit 15p, level 1, 0-20 cm, Lot 16o/33. We found signs of burning in the bottom of Lot 16o/32. We have finished Lot 16o/33. Alice Bay appears to still continue north, so we will excavate its W. face as Lot 16o/34. We have finished both Lots 16o/34 and 16p/18. It has been a long day - We have been having a lot of difficulty in Unit 7p. There are a very large amount

3/13/95 (cont'd)

of rocks here, and we have been going slowly, in hopes of not tearing out anything important. We have reached the point where I do not want to go further without consulting Ed. We will end here for the day. In Unit 150, Alice comes to an end with another wall, perhaps part of O. running east. About 30 cm to the north of this corner is another, with walls running north and east. The wall running north is in very good condition, and lines up exactly with Alice. This one will be called Pat Bag. The wall running north will be called Spot. We will begin following Pat Bag north tomorrow. We left the field at three o'clock.

3/14/95

We arrived at 7:55 A.M. today. We will begin by following Pat Bag north. We will open <sup>Unit</sup> 160, level 1, 0-20 cm, Lot 160/35. We will also spend time clearing more rock in Unit 7p. This will be Lot 16p/19, Unit 7p, cleared rock from 45-65 cm. We have finished Lot 160/35. Pat Bag appears to continue north and then take a corner to the east about 10 cm short of the n. wall of Unit 160. We will expose the western face of this wall with Lot 160/36, Unit 160, 20-65 cm w. of Pat Bag. We have finished Lot 160/36. It now appears as if Pat Bag may continue north. We will expose this possibility by opening up Unit 170, level 1, 0-20 cm Lot 160/37. We have defined another, much larger circular structure connected to Geza X. Inside this structure, which will be called ~~George Hurley~~ <sup>was found</sup>, a few shells, some baji rope, and a large burnt area. There will all be collected as Lot 16p/19. We have also taken a soil sample from the burn surface. The burnt earth has been determined to be of the color 2.5YR Hue 4/8 in the Munsell Color Charts, simply described as red. We will now return to excavate deeper inside feature Geza X to determine if this feature also contains evidence of burning. This will be Lot 16p/20, inside of Geza X, 65-1 m. We have finished Lot 160/37, and it appears that Pat Bag still continues north. We will expose its w. face with Lot 160/38, Unit 170, 20-65 cm w. of Pat Bag. We have finished Lot 160/38 - Pat still continues. Tomorrow we will trace its progress further north. We left the field at 3:00.

P95-72-30

3/15/95

We arrived this morning at 7:30 A.M. We will begin this morning by opening Unit 180, level 1, 0-20 cm lot 160/39 to follow Pat Bay northward. We will also open Unit 8p, level 1, 0-20 cm, lot 16p/21. We have finished both lot 160/39 and lot 16p/21. In Unit 180, Pat Bay continues north. we will excavate from 20-55 cm on the W. side of Pat to expose its western face. This will be lot 160/40. In Unit 8p, we will excavate another 20 cm - This will be lot 16p/22, Unit 8p, level 2, 20-40 cm. We have finished lot 160/40. Pat Bay still continues north. We will open Unit 190 to trace it. Lot 160/41 will be Unit 190, level 1, 0-20 cm. We have finished lot 16p/22. We have uncovered a dense concentration of rocks in what looks like part of a circular configuration - it now looks as if Wayne County may actually have just been a space between Geaux and this other possible structure. In order to expose more of this second structure, we will open Unit 9p. Lot 16p/23 will be Unit 9p, level 1, 0-20 cm. We have finished lot 160/41. It still looks as if Pat Bay continues. As usual, we will now expose the western face of Pat Bay. This will be lot 160/42. We have finished lot 16p/23. As yet it is too early to tell if the circular feature continues. We will continue to dig deeper, Unit 9p, 20-40 cm (level 2) 16p/24. We have finished lot 160/42. Pat Bay suffers some severe tumbling here, but it does appear to continue north. To make sure we will open lot 160/43, Unit 200, level 1, 0-20 cm. We will end the day with this. We will also finish lot 16p/24 by the end of the day - it is still difficult to tell exactly what is happening in this area of the excavation. We will explore more here tomorrow. We left the field at 3:00.

3/16/95

We arrived in the field today at 7:30 A.M. We will begin by continuing lot 160/43 which we did not finish yesterday. We will also start lot 16p/25, which will be Unit 8p, level 3, 40-60 cm. We have finished lot 160/43. If Pat Bay continues, it is much lower than it was previously. We will now excavate Unit 200 down to 55 cm. This will be lot 160/44. We have finished lot 160/44. Pat Bay ends here, and appears to have a corner with a wall running east. We will open Unit 210 to follow this line.

3/16/95 (cont'd)

Lot 160/45 will be Unit 210, level 1, 0-20 cm. We have also finished Lot 160/25. Still too jumbled to discern anything clearly. We will have to open Unit 10p, 0-20 cm, level 1, Lot 160/26 next. We have finished Lot 160/45. We will clear the wall further by continuing deeper. Lot 160/46 will be Unit 210, level 2, 20-55 cm. We have finished Lot 160/46. Pat Bay does end, and a wall line runs east from it. This line/wall will be called Black Randy. This line is in very poor condition, but it does appear to continue east. We will open Unit 220 to follow it. This will be Lot 160/47, Unit 220, level 1, 0-20 cm. We have also finished Lot 160/26. No rocks are visible - and we will continue from 20-30 cm in Unit 10p with Lot 160/27. We have finished lots 160/47 + 160/27. We left the field at three.

3/17/95

We arrived today at 7:30. We will begin with Lot 160/28, which will be Unit 10p, level 3, 30-40 cm. and Lot 160/48, which will be Unit 220, level 2, 20-55 cm. We have finished Lot 160/28. We still need to go deeper to expose the rock lines. Lot 160/29 will be Unit 10p, level 4, 40-60 cm. We have finished Lot 160/48, also. Black Randy continues east to the edge of this unit, where there may be another cross line running north. We will open Unit 230 to investigate this possibility. This will be Lot 160/49, level 1 of Unit 230, 0-20 cm. We have finished Lot 160/49. We will continue down with Lot 160/50. It appears as it there definitely is a line running north from Black Randy, and there also may be a line running c/w + parallel with Black Randy. We have finished Lot 160/50. There is a wall running north from Randy. This will be called Rat Scabies. If there was a wall running west from Rat, parallel to Randy, we tore it out. To see if this is the case, we will open Unit 240, <sup>0-55 cm</sup> ~~level 1, 0-20 cm~~, Lot 160/51 to see if we expose this line. We have not found a line running w. from Rat, but there may be a small line running north + parallel to Rat. We will excavate Unit 250 to expose both this line and Rat. This will be Lot 160/52, and will be Unit 250, level 1, 0-20 cm. We have finished Lot 160/29. This area needs more work - we shall return later. Now we will begin exploring the

3/17/95 (cont'd)

southern edge of the structural complex by excavating Unit 11p. This will clear the southern edge of Mike Watt. Lot 16p/30 will be Unit 11p, level 1, 0-20 cm. We have finished Lot 16o/52. We cannot yet tell whether Randy continues or not. We will stop here for the week. We will continue Lot 16p/30 on Monday - there are a lot of tumbled rocks to clear there, but it looks as if we are coming down on some major construction.

3/20/95

We arrived today at 7:30. We will begin by continuing Lot 16p/30 and beginning Lot 16o/53, Unit 240, level 2, 20-40 cm. We have finished Lot 16p/30, or rather, we have given up on Unit 11p. There appears to be a line running west from the end of Mike Watt, but it is rather poorly preserved. There is so much rubble in this area that it is difficult to clearly define anything positively. We will for this reason move to Unit 12p, where we will attempt to clear the western side of whatever construction lies south of the axial trench. Lot 16p/31 will be Unit 12p, level 1, 0-30 cm. We have finished Lot 16o/53. We obtained a massive amount of sherds from Unit 240. Rat Scabies runs a short distance north, then ends, with another line running west from the corner. This line will be called Captain Sensible. We will now open Unit 250, level 1, 0-20 cm, Lot 16o/54 to follow the Captain westward. We have finished Lot 16p/31. It appears that we may have two parallel lines running N/S in this unit. We will excavate Unit 13p, level 1, 0- cm, Lot 16p/32 in order to follow these lines south. We have also finished Lot 16o/54. We will excavate deeper to expose the lines better. This will be Lot 16o/55, Unit 250, level 2, 20-55 cm. We have finished Lot 16o/55. Tomorrow we will continue Lot 16p/32 & start Lot 16o/56. We left the field at 3.

3/21/95

We arrived today at 7:30 A.M. We will continue Lot 16p/32. We will also begin Lot 16o/56 which will be Unit 27o, level 1, 0-55cm, clearing Captain sensible. I have inherited two more workers, so I will set them to work following Lint northwards. This will be Lot ~~16K/22~~ 16K/22, Unit 10K, level 1, 0-20cm. We have uncovered two parallel walls running N/S in Unit 13p. The westernmost wall will be called Pig Champion, and the easternmost one The Slayer Hippy. We have finished Lot 16p/32. We will follow P.C. and T.S.H. south by opening Unit 14p, level 1, 0-60cm, Lot 16p/33. We have finished Lot 16K/22. It is too early to tell if Lint continues or not, we will excavate deeper. Lot 16K/23 will be Unit 10K, level 2, 20-60cm. We have finished Lot 16o/56. As it turns out, Black Randy only continues straight east, and Rat and the Captain were only fortuitous finds. These two names will be put on reserve for possible use later. We will now open Unit 28o, level 1, 0-20cm, Lot 16o/57 to follow Randy. We have also finished Lot 16p/33. T.S.H. seems to come to an end, about 40 cm short of what may be a cross wall running E/W. P.C. is poorly preserved, but it looks as if it does continue far enough to meet with this cross wall. Perhaps there space between the end of T.S.H. and this cross wall is a doorway. We will explore this possibility by opening Unit 15p, level 1, 0-55cm, Lot 16p/34. We have finished Lot 16o/57. We will dig deeper and expose Black Randy with Lot 16o/58, Unit 28o, level 2, 20-45cm. While it does not appear as if Lint continues north, we have found a very large amount of fiestas in Unit 10K. Most of these shards are concentrated at 50 cm and deeper. We finished Lot 16K/23 and tomorrow we will continue lots 16o/58 and 16p/34. We left the field at 3.

3/22/95

We arrived today at 7:30. We will begin this morning by continuing Lots 16o/58 and 16p/34. It appears as if Black Randy may take a corner in Unit 15p, we are searching for the exact end of the line. We will also begin to remove the island of dirt that has been left between Subops 16o + 16K. We will begin with Unit 11K, level 1, 0-20cm,

P95-72-34

2/22/95 (cont'd)

Lot 16K/24. I have no reason to believe that we will encounter any architecture here, although there does seem to be a large amount of tumble visible in cross-section. We have finished Lot 16O/58. Black Randy actually does continue east, and we have uncovered a floor at 45 cm deep. We will stop excavating there and move on to Unit 290, level 1, 0-20 cm, Lot 16O/59 to trace Randy's progress and uncover more of the floor. We have finished Lot 16K/24. We have as yet not <sup>of</sup> uncovered any features in this unit. We will dig level 2, 20-55 cm, Lot 16K/25. We have finished Lot 16P/34. Unit 15P has been very confusing, and it is difficult to tell exactly what happens at the terminus of T.S.H. We will open another unit, .5m x 2m to expose more area to the south of our current excavations. This will be Unit 16P, Level 1, 0-60 cm, Lot 16P/35. We have finished Lot 16O/59. We will need to dig deeper before we can determine if Black Randy continues or not. Unit 290, level 2, 20-45 cm will be Lot 16O/60. We have finished Lot 16K/25. We have uncovered a large wall running N/S in Unit 11K. This wall will be called Billy Childish. It starts about 75cm to the north of Chavo's western end, and runs directly north from there, paralleling Lint (and about 2cm away from Lint). To follow Billy northward we will open Unit 12K, Lot 16K/26 will be Unit 12K, level 1, 0-35 cm. We have finished Lot 16O/60. Black Randy comes to an end here and turns a corner to the south. We will follow this line south with Unit 300. Lot 16O/61 will be Unit 300, level 1, 0-20 cm. This new wall will be called Richard Hell. We have finished all the lots we were working on. In Unit 12K, Billy continues north, in Unit 300, Richard runs south, and in Unit 16P, we have uncovered a possible line running SE from the end of T.S.H. We will continue tomorrow morning by following these lines. We left the field at 3:00.

3/23/95

We arrived today at 7:20 A.M. This morning we will begin Lot 16O/62, Unit 30, level 2, 20-45 cm, Lot 16K/27, <sup>which will be the continuation of Lot 16K/26</sup> ~~Unit 13K, 0-20 cm~~, and Lot 16P/36 / Unit 17P, 0-20 cm. We have finished Lot 16K/27. Billy continues north, with a possible small wall heading off east. We will

3/23/95 (cont'd)

continue following Billy north. Lot 16K/28 will be Unit 13K, level 1, 0-20cm. We have finished Lot 16p/36. As yet it is impossible to tell if there is a line running west from the north end of Pig Champion. Lot 16p/37 will be Unit 17p, level 2, 0-55cm.

We have finished Lot 16o/62. There may be a line running off to the southeast from the end of Black Randy. Richard Hall runs directly south from Black Randy, in a double line, one very low, and another more substantial. We will follow Richard south. Lot 16o/63 will be Unit 31o, level 1, 0-45cm. We have finished Lot 16p/37. We need to clear more area to tell for sure, but it is possible that we have found a doorway into another room in Unit 17p. We will open Unit 18p to follow the western side of Pig Champion south. This will be Lot 16p/38, level 1, 0-40cm. We have finished Lot 16K/29. Billy Childish continues to roughly parallel the end of Lint, where it appears there may have once been a small connecting wall between Billy and Lint. We have obtained a very large amount of prestos from just east of Billy. We will now return and remove the 50cm bulk that is left between Billy and Alice Bay. Lot 16K/30 will be Unit 14K, level 1, 0-20cm. We have finished Lot 16K/30. We will continue with Lot 16K/31, Unit 14K, level 2, 20-55cm. We have finished Lot 16p/38. This area continues to be very confusing. We may have found the western side of Pig Champion. We will follow this south. Lot 16p/39 will be Unit 19p, level 1, 0-20cm. We have finished Lot 16o/63. Richard continues south. We will follow it further. Lot 16o/64 will be Unit 32o, level 1, 0-20cm. We will begin there tomorrow. We will finish Lot 16K/31 by the end of the day. Tomorrow we will start Lots 16K/32 + 16p/39. We left the field at 3:00.

3/24/95

We arrived at 7:20 A.M. this morning. We will begin with Lot 16K/32, which will consist of artifacts taken from above and the western side of Billy Childish, Lot 16p/39, which will be Unit 19p, level 1, 0-20cm, and Lot 16o/64, which will be Unit 32o, level 1, 0-20cm. We have finished Lot 16p/39. We have cleared the w. side of Pig Champion - any door theory appears to have been wrong. We will extract all the rubble to the west of P.C. This will be Lot 16p/40, Units 18p + 19p, 20-40cm.

2/24/95 (cont'd)

I currently have 13 workers - six excavating and seven moving the backdirt from the area defined by Pat Bag, Black Randy, and Richard Hell. We have also finished Lot 16K/32. We have cleared the western side of Billy Childish, and found it actually is the eastern wall of a small room formed by Billy, Lint, a small cross wall to the north, and a short wall forming a doorway with Lint to the south. The cross wall will be called Rat scabies, the short wall Captain sensible. We will now continue to take out the .75m bulk left between Billy and Alice Bag. Lot 16K/33 will be Unit 15K, level 1, 0-20cm. We found a very large amount of frescos to the west of Billy, as yesterday we found a very large amount to the east of Billy. There seems to be a very large concentration in this general area, particularly from 20+ cm. We will begin to remove the large island of earth left between Pat, Randy, and Richard now. I have two more workers to start excavating now. We will start by clearing more around O. Lot 16o/65 will be Unit 33o, level 1, 0-20cm. We have finished Lot 16K/33. Lot 16K/34 will be Unit 15K, level 2, 20-40 cm. We have finished Lot 16o/65. We will clear more along the north face of O. with Lot 16o/66, Unit 33o, level 2, 20-30cm. We have finished Lot 16o/64. Richard Hell continues south. We will continue to follow this line. Lot 16o/67 will be Unit 34o, level 1, 0-20 cm. We have finished Lot 16p/40. Pig Champion runs through units 18p + 19p, and we will follow it further south. The east side of P.L. is very poorly preserved. Lot 16p/41 will be Unit 20p, level 1, 0-25 cm. We have also finished Lot 16K/34. We will continue deeper with Lot 16K/35, Unit 15K, level 3, 40-55 cm. We have finished Lot 16o/66. O. continues east in a line, crossing both Alice Bag and Exem. ~~We will follow O. further east by opening Unit 35o. Lot 16o/68 will be Unit 35o, level 1, 0-20 cm.~~ We have finished Lots 16o/67, 16p/41, 16K/35. We will continue Lot 16o/68 <sup>Monday</sup> ~~morning~~ morning. We left the field at 3:00.

2/27/95

We arrived today at 7:35. Everyone is moving to new sites today, while I remain here on 530P/6. I am back to only four workers, Don Chupé, Victoriano, Manuel, and José. Today we will begin Lots 160/68 and 160/42. 160/68 will be Unit 340, level 2, 20-45 cm, and Lot 160/42 will be Unit 20p, level 2, 20-45 cm. Lot 160/~~68~~<sup>42</sup> will also include artifacts from 0-45 cm at a small 30x50 cm Unit 2/p. We have finished Lot 160/42. Pig Champion continues south, with another line running west from it. This line will be called Johnny Thunders. There may be another line running east from P.C., we will excavate this later to see if this is true. First we will continue to follow P.C. south. Lot 160/43 will be Unit 22p, level 1, 0-40 cm. We have also finished ~~the~~ Lot 160/68. Richard Hell continues south. Lot 160/69 will be Unit 360, level 1, 0-20 cm - we will continue following Richard south. We have finished Lot 160/69, and will continue deeper with Lot 160/70, Unit 360, level 2, 20-45 cm. We have finished Lot 160/70. Richard Hell appears to end in Unit 360, with another construction built off of it and continuing to the south. We will remove the last remaining Unit between Subop D and Subop E (Unit 59) now. This will be Unit 370, level 1, 0-45 cm, Lot 160/71. We have finished Lot 160/43. Pig Champion comes to an end at a very wide cross wall running E/W. This wall will be called Kira. we will now follow Kira west. Lot 160/44 will be Unit 23p, 0 - cm. There also appears to be a line running southeast from the south side of Kira, in Unit 22p. we will follow this later. We have finished Lot 160/71. In this lot we have uncovered the western end of Pat Smear, which meets a line of rather large rocks running N/S. This line will be called Soo-Yang Parks. We have also uncovered another line running parallel to Soo-Yang + about 15 cm to the west, underneath Pat Smear, which appears to run from just under Jello's northern end to the construction that was built off of Richard Hell. This line will be called David Yaw. Both Soo-Yang and David start at a depth of 40-5 cm and extend to a depth of 65 cm. We have also finished Lot 160/44. It appears as if Kira may only extend east from P.C., but we need to dig deeper to confirm this. we will begin here tomorrow.

3/28/95

We arrived today at 7:30 A.M. We will start this morning with Lot 16p/45, Unit 23p<sup>well</sup>1, 25-40 cm and Lot 16o/72, Unit 35o, level 1, 0-20 cm. In Unit 35o, we will be following Spot and O. eastward, and in Unit 23p, we will be clearing to see if Kira runs westward. We have finished Lot 16o/72. We have pulled a relatively large amount of baja regre from this area. Spot and O. appear to continue east. We will dig deeper with Lot 16o/73, Unit 35o, level 2, 20-40 cm. We have finished Lot 16p/46. Kira does not extend west of P.C., but a smaller line does, running parallel to Johnny Brunders. This line, which will be called Lucky Lehrer, meets another line running south. The line running south will be called Keith Morris. Lot 16p/46 will be Unit 24p, level 1, 0-20 cm, in which we will follow Keith south. We have followed Lot 16o/73. Spot seems to continue east, with possibly a small cross wall extending south from it. O. appears to come to an end. We will follow Spot east with Lot 16o/74, Unit 38o, level 1, 0-20 cm. We have finished Lot 16p/46. We are not yet deep enough to see Keith. Lot 16p/47 will be Unit 24p, level 2, 20-40 cm. We have finished Lot 16p/47. Keith ends, but may pick up again after a 60 cm gap or so. This may be a doorway. However, we will put this area on hold for a while and excavate further in more important areas. Lot 16p/48 will be Unit 25p, level 1, 0-20 cm, to expose the south side of Kira and follow it eastward. We have finished Lot 16o/74. We have gotten a lot of baja regre from this Unit, in an area roughly corresponding to the concentration of baja regre found to the west of Steve Batons. We will now excavate Lot 16o/75, Unit 39o, level 1, 0-20 cm, to expose the south side of O. and expose any constructions to the south of Spot. By the end of the day, both lots we are currently working on will be done. Tomorrow we will begin by digging deeper in both Unit 39o and Unit 25p. We left the field at 3:00.

3/29/95

I'm pretty sick today, so I don't know how much we'll get done. I'm going in early, at about 9:00 A.M. We have only finished Lots 160/75 and 160/48, which we continued from yesterday. Kira continues east in a rather poorly preserved line of cut blocks. Tomorrow we will continue following Kira eastward. We have found a strange, very shallow feature in Unit 25p. It appears to be two shallow lines of rocks, about 1m apart with what looks like a possible floor between them. This feature is only at a depth of 20 cm, and has no other rock below it, but some blocks are visible in the cross section below the feature.

3/30/95

We arrived today at about 7:45 A.M. I'm still feeling slightly ill, so I'll probably be moving pretty slowly. This morning we will begin Lot 160/76, Unit 40<sup>0</sup> + 41<sup>0</sup>, 0-20cm, to expose more of the shallow feature we uncovered yesterday, and also to see if Stiv Bators continues north. We will also begin Lot 160/49, Unit 26p, 0 - cm. We will trace Kira eastward here. We have finished Lot 160/76. The shallow feature continues. The line to the north has been named Blackie Onassis, while the one to the south is National Kato. Blackie probably originally ran from ~~the south~~ Exene (parallel about 5cm to the south of O. to a point roughly parallel with Richard Hell. National Kato, on the other hand, appears to stretch only from Exene to just to the west of Stiv Bators. Lot 160/76 will be Units 40<sup>0</sup> + 41<sup>0</sup>, 20 - cm. We will leave Blackie intact, but will dig down to uncover Stiv Bators to see if it continues north, and to expose more of Pat Smear. We have finished Lot 160/49 (to which was added Units 25<sup>p</sup> + 26<sup>p</sup>, 40-50cm). At a depth of 50cm on the southern edge of Units 26p + 25<sup>p</sup>, we have uncovered another line of cut-blocks. Lot 160/50 will be Units 22<sup>p</sup> + 23<sup>p</sup>, 40-50cm. We will try to see in this lower line of cut blocks, which will be called Ron Reyes, continues west, underneath the possible line of rocks running southeast from the corner of Kira. We have finished Lot 160/77. Stiv corners with Pat Smear and does not continue, while it appears as if Blackie O. is actually a substantial wall with basal rock in the same level as Pat. Lot 160/78 will be Unit 42<sup>0</sup>, level 1

pg 5-72-40  
3/30/95 (cont'd)

0-20 cm to clear the rest of the area south of the platform formed by Pat Bag, Black Randy, Richard Hall, and Spot. Meanwhile, we have found that Ron Reyes is actually not a line, but rather a beautiful cut block floor. We are working to clear it entirely in Units 27p, 26p, 25p, 24p, 23p & 22p. This will all be included in Lot 16p/50. We have finished both Lot 16p/50 and Lot 16p/78. Tomorrow we will begin new lots. We will open Unit 28p to expose more of Ron Reyes, and we will dig deeper in Unit 420. We left the field at 3:00.

3/31/95

We arrived today at 7:30 A.M. This morning we will begin with Lot 16p/<sup>51</sup>~~78~~, Unit 28p, 0-<sup>20</sup>~~50~~ cm, to expose more of Ron Reyes, and Lot <sup>16p/79</sup>~~16p/78~~, Unit 430, level 1, 0-20 cm to expose the inner corner of Spot and Pat Bag. We have finished Lot 16p/51, we have found only trestos, no rocks - we will continue down to the surface of Ron Reyes with Lot 16p/52, Unit 28p, 20-50 cm. We have finished Lot 16p/79. It is difficult to see the inside lines of Pat Bag and Spot. In hopes of finding the inside line of Spot clearer, we will now move to Lot 16p/80, Unit 440, level 1, 0-20 cm. We have finished Lot 16p/52. Ron Reyes is not very extensive, only extending about 4 blocks south. It is also in rather poor condition, and may have been torn up to provide building materials for later construction (perhaps for Kira?) because it has a very amorphous border, not clean and straight. Lot 16p/53 will be Unit 29p, level 1, 0-20 cm. In this unit we will look for both the possible line drift over Ron, and the continuation of Ron. We have finished Lot 16p/80 - it is still difficult to tell what is going on behind Spot, but it now looks as if we may have found the surface of a platform. Lot 16p/81 will be Unit 450, level 1, 0-20 cm - further clearing along the line of Spot. We have finished Lot 16p/53. It now appears that Ron Reyes is an entry feature, with a line of cut blocks running across the base of a possible doorway (the western side of which is formed by the short, SE wall from the corner of Kira, which will be called Gage Ginn), flanked by a small floor of cut blocks on each side of the doorway. We will excavate Lot 16p/54 in order to look for the other side of the entry feature.

P95-72-41

3/31/95 (cont'd)

Lot 160/54 will be Unit 30p, 0 - cm. We have also finished Lot 160/81. We will go deeper in this unit with Lot 160/82, Unit 450, level 2, 20 - cm. We will continue with these same lots on Monday morning. We left the field at 3:00.

4/3/95

We arrived today at 7:35 A.M. This morning we will continue with Lot 160/54, and we will begin Lot 160/83, Unit 460, level 1, 0-20 cm. We have finished Lot 160/83. It appears as if Spot may take a corner approximately 170 cm west of Black Randy. Lot 160/84 will be Unit 470, level 1, 0-20 cm, a unit to see if there is actually a line running north from Spot. We have finished Lot 160/54. In this area, Ron Reyes actually does become the basal line for a wall running east/west. There is also a line of vertically placed cut blocks running south from Ron. Just to the east of this line were found four very large sherds, two of which fit together. They all appear to be the rims of very large Jicaro jars. Lot 160/55 will be ~~Unit~~ Unit 30p, 0 - cm, tracing Ron's progress eastward. We have finished Lot 160/84. There now does not appear to be any line running north from Spot. At a loss for anything else to do, we will continue clearing the entire top of the platform with Lot 160/85, Unit 480, level 1, 0-20 cm. We have finished Lot 160/85. Now we will begin clearing some of the tumble away from above the line of Richard Hell in Units 360, 340, & 320. This will be Lot 160/86. While pulling away the tumble in Unit 360, we exposed the northern side of Blackie Onassis. We have also uncovered another line running E/W and parallel to Blackie, lying about 40 cm to the north of Blackie. This line appears to line up with the small abutment off of Spot. Lot 160/86 will now contain the artifacts obtained from between Blackie & and this new line, which will be called King Roeser. We left the field at 3:00. We found a complete but broken figurine at the base of King Roeser. I have logged this separately.

4/4/95

We arrived today at 7:30. We will begin by continuing to dig down between Blackie and King. Lot 160/87 will be Units 410 + 420, 20-40 cm. We will also continue pulling rocks away from Kira in Unit 31p to clarify the line better. This will be Lot 160/56.

We have finished Lot 160/56. It is difficult to tell with any certainty what is going on here. We will now move to Unit 32p, to expose more of Kira and the associated construction. Lot 160/57 will be Unit 32p, level 1, 0-20 cm. We have finished Lot 160/87. King and Blackie both continue west, with King stopping and connected by a small line to Spot. We will now start Lot 160/88, Unit 490, level 1, 0-20 cm to continue clearing along Richard Hell's western side. We have finished Lot 160/57. We have decided to let this area go for a while and remove the earth between Kira and the rest of the construction to the north. Lot 160/58 will be Unit 33p, level 1, 0-45 cm. Lot 160/59 will be Unit 22p, 40-50 cm, which we are digging because we have taken out the small diagonal line (Gres Ginn) that went across Ron, thereby exposing more of Ron. We have finished Lot 160/88. We continue to clear with Lot 160/89, Unit 500, level 1, 0-20 cm. We have finished Lot 160/58. We seem to have found the northern side of Kira. Lot 160/60 will be Unit 34p, level 1, 0-40 cm, to further expose Kira. Tomorrow we will begin by continuing Lot 160/60, and we will start Lot 160/91. We have finished Lot 160/90. We left the field at 3.

4/5/95

We arrived at 7:20 A.M. today. This morning we will continue Lot 160/60 and begin Lot 160/91, Unit 520, level 1, 0-20 cm. We have finished Lot 160/60. We have exposed more of the top and northern side of Kira. We will continue following her east with Lot 160/61, Unit 35p, level 1, 0-40 cm. We have finished Lot 160/91, and will start Lot 160/92, Unit 53, level 1, 0-20 cm. We have finished Lot 160/92, and will continue clearing the platform with Lot 160/93, Unit 540, level 1, 0-20 cm. We have finished Lot 160/61. We will now move to Lot 160/62, Unit 36p, level 1, 0- cm. I believe we may be uncovering a small line running from Darby Creek to King.

4/5/95 (cont'd)

We have finished Lot 160/93. We will finish clearing the platform by removing Lot 160/94, Unit 550, level 1, 0-20 cm. We have finished Lot 160/94. Now the entire platform is cleared. There are several possible wall lines visible. Lot 160/95 will be Unit 480, level 2, 20-60 cm. We will attempt to expose the southern and western faces of two lines that are visible on the surface here. In Lot 160/62, Unit 36p, we have uncovered a small line running N/S between Darby Crash and Kira. This line will be called Gabby Hayes. It does not look like Darby continues past Gabby. We will finish here for the day.

4/6/95

We arrived today at 7:45 A.M. We will continue Lot 160/95, and we will begin Lot 160/63, which will be the area inside Gabby, Darby, Kira, & the southern part of Pig Champion, 40-50 cm.

We have finished Lot 160/63. We have uncovered what appears to be a floor just to the east of Pig Champion, extending out about 50 cm. This feature has been named Chuck Dukowski. Within the small space now defined by Gabby/Hayes, Darby Crash, and Kira is a large burnt earth feature. We will now return to Unit 31p to remove the rubble that was left there. We will be looking for the end of Kira, for it appears to take a corner in this Unit. This will be Lot 160/64. We have finished Lot 160/95. We excavated to a depth of 60 cm here, and uncovered the southern face of a wall running E/W, starting at Richard Hell, at the western terminus of this wall are two lines extending south, one at a depth of 20 cm, the other at a depth of about 40 cm. They only extend about 60 cm south, and the deeper one is slightly skewed to the east of the other. It looks like it could be a stairway, except each line is only one stone deep. The E/W wall will be named Steve Albini. We will now clear the northern face of Steve with Lot 160/96, Units 490 + 500, level 2, 20-60 cm. We found a piece of carved bone and an intricate flower-shaped ear flare in Lot 160/95.

4/6/95 (cont'd).

We have finished Lot 16p/64. There may be a line running from Ron Reyes up to Kira - a tree has grown up through it, so it is difficult to tell for certain. There also may be a line extending east from the end of Kira, lower and less well built than Kira. We will open Lot 16p/65, Unit 37p, level 1, 0-60cm, in order to see if this line does continue east. We will finish both of these lots by the end of the day (lots 16p/96 + 16p/65).

We left the field at 3:00.

4/7/95

We arrived today at 8:00. I only have three workers this morning because Don Chape is away at a funeral. We will start this morning with Lot 16p/97, Units 490 + 500, level 3, 40-60cm. We will also continue Lot 16p/65. We have finished Lot 16p/98. We have cleared the inner sides of Black Randy and Richard Hill here, and have cleared the northern side of Steve Atchisi. Lot 16p/98 will be Unit 510, level 2, 20 - cm. We will continue clearing Black Randy and Steve. After talking to Ed, I have decided to name the line connecting Kira to Ron Reyes. This wall will be called Greg Ginn. I will also give names to the two <sup>N/S</sup> lines uncovered in Unit 480. The lower (and therefore probably earlier) line will be called Joe Strummer - there seems to be a soil change, perhaps fill below Joe - and it appears that Steve was built up and over Joe, which may have preceded Steve. The upper line will be Mick Jones. This line may have been built even later than Steve. We have finished Lot 16p/65. We may have uncovered a line running east from the end of Kira/Greg Ginn. Right now we will follow Darby Crash east, as it appears as if it might meet a possible line that eventually meets with Mike Watt. Lot 16p/66 will be Unit 38p, level 1, 0 - cm. We have uncovered a burial in Unit 510. It is just at the base of Steve, on the northern side. So far all that is visible is the back of the skull, which the workers have already removed part of. I will work on clearing more of it. I have uncovered the back half of the skull and part of an arm bone. We have covered it up and will continue work on it after Sunday lunch. We will finish lots 16p/66 + 16p/98. We left at three.

4/17/95

We arrived today at 8:00 AM. I have been given two more permanent workers. One is named Marco, and I haven't figured out the other one's name. This morning I will continue uncovering the burial, and we will excavate Lot 160/99, Units 450 + 460, level 2, 20-50 cm. I have the other four workers moving the backdirt from the area bounded by D. Boon, Mike Watt, The Slayer Hippy, and Darby Crash, which we need to excavate. The burial appears to have survived *Seneca Santa* untouched. We will now begin Lot 160/67, level 1 at Unit 39p, 0-20 cm, to look for the end at The Slayer Hippy. We will also continue to expose Darby Crash with Lot 160/68, Unit 38p, 30-50 cm. We have finished Lot 160/68. Darby continues east. Lot 160/69 will be Unit 40p, level 1, 0-20 cm, following Darby and connecting to the earlier excavations. In Units 450 + 460 we have uncovered a low wall running E/W directly through the middle of the units. This line is parallel to, but lower than, Steve Albini. This line will be named Penelope Houston. We have also found a cross wall running N/S along the western wall at Unit 450, which Penelope + Steve both meet, and it now looks as if Joe Strummer and Mick Jones form a small stairway over this wall. This wall will be named Brian Baker. I would imagine that this wall runs all the way across from the eastern end at Spot to Black Randy. We will now excavate to the south of Penelope, in the area bounded by Richard Hell, ~~Blackie~~ King Koeser, <sup>Penelope</sup> Spot, and Brian. This will be Lot 160 (~~last lot~~ 100) Units 380 + 420, level 2, 20-30 cm. We have finished Lot 160/69. Darby Crash does continue east to connect with Mike Watt. We have also finished Lot 160/100. We have gotten a very large amount of trash from this 10 centimeter deep level, as well as a large *des. den* core. I have taken out the burial. The bones will be included in Lot 160/98. The earth inside the skull cavity had a large amount of carbon in it. Tomorrow we will continue Lot 160/67, and begin Lots 160/101 + 160/70.

4/18/95

We arrived today at 2:35. Last night someone apparently was messing around in the excavations, and knocked out part of The Slayer Hipray. It hasn't been damaged too badly. This morning we will begin with Lots 160/101, Units 380 + 420, 30-50cm (Unit 3); and Lot 160/70, Unit 41p, 0-30cm. We will continue Lot 160/67. This Lot has been very frustrating, and the new workers may have torn out part of the wall. We have finished Lot 160/67. We have found no walls here, but there is a possible line running east from the north end of The Slayer Hipray. Lot 160/71 will see Unit 42p, level 1, 0-30cm, to expose the eastern side of T.S.H. and to look for any other possible walls or lines running east. We have finished Lot 160/70. There is a possible line extending north from Darby. In order to clarify this, we will stop in Unit 41p + move to Unit 43p, level 1, 0 - cm. This will be Lot 160/72. In the room formed by Penelope, Richard, King, and Brian we have found a complete mano, some very large sherds, including almost half of a polychrome bowl, and a burn feature.

\* A note: the burial that was removed yesterday ~~was~~ extended underneath Steve Albini. The skull was located at a depth of 65cm in relation to the top of Steve, and it was about 5cm lower than the breast rocks at the north base of Steve. It lay just against the base of Steve, and about 105cm west of the eastern end of Steve. There was a small amount of carbon residue and around the skull, which I will save in a separate bag in Lot 160/98. We have continued to find more and more interesting artifacts in the room we are excavating (Lot 160/101) - we have found a three-holed conch shell with three legs and some plastic decorations. We have also found a very large amount of obsidian, a metate fragment, and a donut stone that looks as if it was worked to be more than a simple round shape with a hole through the middle. All this points to the fact that this room was probably some sort of storage or cooking area. Actually, the "burn feature" has turned out to be a massive chunk of lava rock - a square about 50 cm x 50 cm directly in the center of the room. There is also a lower line running along the southern edge of the room, not quite parallel to King. We have finished Lot 160/101. We found a small Jicaro bowl, completely intact except for a small chip out of the rim here also.

4/18/95 (cont'd)

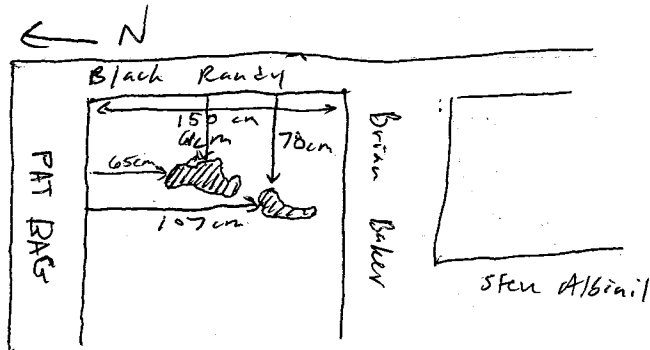
We will now begin Lot 160/102, which will be Unit 510, clearing the eastern face of Brian. We have finished Lot 16p/72. There does seem to be a sort of line running north from Darby. This line will be called Bill Stephenson. Lot 16p/73 will be Unit 44p, level 1, 0-30cm, to see if Bill continues north to connect with D. Boon. This Lot will also begin exposing the south face of D. Boon. We have finished Lot 160/102. Brian Baker extends the entire way across this structure, from Black Randy to the end of Spot. We will now start Lot 160/103, Units 520 + 530, level 2, 20-45cm, where we'll expose the west face of Brian, the south face of Randy, and the east face of Pat. Bay. We have finished Lot 16p/73. Tomorrow we will continue with Lots 160/103 + 16p/71. There does appear to be a wall running east from the north end of T.S.H. We will clear more in this area tomorrow. We are getting a large amount of baja reque from Units 520 + 530. We left the field at three.

4/19/95

We arrived today at 7:45. This morning we will continue Lot 160/103, where we have been finding a very large amount of baja reque. We will be clearing down to the level of the baja reque to find the extent to which the layer extends. We also continue Lot 16p/71. We have begun Lot 16p/74. This is Unit 5p, western 1/2 of unit, 20-40cm. Here we are clearing what may be a possible wall line running parallel to Bill. We have finished Lot 16p/74. It still appears as if Bill is a shallow line, running parallel to Mike. Between Mike and Bill, and slightly lower than Bill, is another possible line, which may form part of a stairway with Mike as the base step, and Bill as the top step. This line will be called Lydia Lunch. Lot 16p/75 will be Unit 41p, level 2, 30-cm, clearing a little deeper above Bill and looking for another possible line running parallel and to the west of Bill. We have finished Lot 16p/71. There is a wall running eastward from the north end of T.S.H. this wall will be called Lyle Preslar. Lot 16p/76 will be Unit 45p, level 1, 0-cm, following Lyle eastward.

4/17/95 (cont'd)

We have finished Lot 160/103. As stated above, there is a very large concentration of baja rock in this area, possibly a burn feature - it covers ~~area~~ a very large area and appears to be about 5 cm deep. It is located about 40 cm below ground surface. We have found the interiors of Black Randy and Pat Bag, and we have also uncovered a line of rocks running E/W through the center of the unit, at a depth of about 45 cm. Lot 160/104 will be Units 50 + 55, level 2, 20 - cm, to expose more of the baja rock feature & the interior of Pat Bag. We have finished Lot 160/75 - We will now begin Lot 160/77, Unit 46, level 1, 0 - cm. In this lot we will expose the north face of Darby, and look for a cross wall running north to connect either with D. Boon or Lyle. We have uncovered two small patches of a plaster floor located directly on top of the burnt area in Lot 160/104. This plaster is located 50 cm below ground surface, and is very poorly preserved. Only two small patches survive. We have finished Lot 160/77. We will continue to clear this area with Lot 160/78, Unit 47, level 1, 0 - cm.



### Plaster floor

The plaster floor is located 61 cm south of the interior of Black Randy, and 65 cm east of the interior of Pat Bag (the larger patch of plaster). The smaller patch is located 78 cm from Randy & 107 cm from Pat Bag. The area around and under ~~both~~ patches is severely burnt. The plaster is about 1-2 cm deep, and the burning extends for 12 cm below the plaster. The burning is a very dark brownish red. The larger patch of plaster measures 35 cm long (E/W) x 17 cm wide (N/S). The smaller is 19.5 cm long (E/W) x 10 cm wide (NE/SW). We have finished Lot 160/104. We will continue clearing the interior of this room with Lot 160/105, Units 43 + 44, level 2, 20 - 30 cm. We will finish Lots 160/78 & 160/76 by the end of the day, tomorrow we will continue Lot 160/105. We left at 3:00.

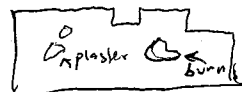
4/20/95

We arrived at 7:30 today. It rained last night - a big storm. The site is a mess. There are standing puddles of water all over the excavation, and one of my back dirt piles collapsed into the excavation. This morning we will continue with the lots we were working on yesterday, and when the extra workers have finished moving the rock pile to the south of the excavations, I will probably start them on digging also. We have finished Lot 16p/76. Lyle does continue east. We will now move back to Subop 16K, where we will excavate Lot 16K/35, Unit 16K, level 1, 0-20 cm. The rain last night filled up one of the circular features. These three features, the northernmost one being Geza X, the middle being ~~George~~ George Hurley, the southernmost one being Bob Mould, all have water in them. Geza is almost dry, George only has a little in the bottom. Obviously these two do not hold water well. Bob, on the other hand, has 13 cm of water in it - perhaps this feature was waterproofed with clay specifically for this purpose. We have finished Lot 16o/105. We have already begun to uncover some burning; we will now excavate down to the level of the plaster floor in this room with Lot 16o/106, Units 430 + 440, level 3, 30-45 cm. We have finished Lot 16K/36. The trouble here is very concentrated, but there really doesn't appear to be anything here. Lot 16K/36 will be the same Unit, 20-50 cm. We have finished Lot 16p/78. We have uncovered a very small room here, formed by Darby on the south, two parallel lines running north from Darby, and a short, shallow line connecting these lines on the north. The eastern line will be called Tony Adolescent, the western Jeff Petzick, and the north Rikk Agnew. The room is only about 50 cm wide (E/W) x 137 cm long (N/S). We will now excavate Lot 16p/79, Unit 48p, level 1, 0- cm. In this unit we will be looking for the south side of D. Boon, and the continuance of Lyle Pustar from the west. We have finished Lot 16o/106. There were only a few trestles in this level, but we did discover another one at Great East. We will now begin the final stage of clearing this room with Lot 16o/107, units 30 + 350, level 2, 20-30 cm. We have finished Lot 16K/36. There were a large number of trestles here, but no construction. We will now begin following the line that runs east from the corner of Gregg Ginn + Kira. This will be called Greene Douglas. This will be Lot 16p/80, Unit 49p, level 1, 0-20 cm.

\* Big Black  
 \* This burn feature is located in the southern half of the room, @ 65 cm N of inside of spot, + 60 cm east of inside of Pat Bag. The burn feature is amorphous, and measures 40 cm (N/S) x 44 cm E/W.

9/20/95 (cont '2)

We have finished Lot 16p/107. We have now cleared the entire structure. There is a large room on the west side, bounded by Black Randy, Pat Bay, Brian Baker, and Spot. The room looks like this:



We will now move to the south, and open Unit 50p. This will be Lot 16p/81, and we will be following a possible line of large stones that extends east from the point where Ron Reyes and Gregg Linn met. We have finished Lot 16p/79. We have uncovered what looks like the end of Lyle, and we have also found the south side of D. Boon, or another wall parallel to D. Boon. We will continue Lots 16p/80 + 16p/81 tomorrow. We left the field at 3:00.

9/21/95

We arrived today at 8:15. We will continue with Lots 16p/80 + 16p/81, and we will begin Lot 16p/82, Unit 51p, level 1, 0 - cm. We will be looking for the line called Lyle Preslar in this Unit. We have finished Lot 16p/81. It looks like there is a line of large rocks continuing east from the corner of Greg and Ron. We will excavate 16p/83, Unit 52p, level 1, 0 - cm in order to see if the line continues + becomes more substantial. It is possible that we are about to hit a N/S cross line connecting this line and Graene Douglas. This line we are currently following will be called Charlie Harper. We have finished Lot 16p/80. Graene continues east along the south edge of this unit. Lot 16p/84 will be Unit 53p, level 1, 0 - cm to continue following Graene east. We have finished Lot 16p/82. We have uncovered the continuation of Lyle to connect with Jeff Perreault; Rikle Agnew now looks nearly like part of Lyle. We also uncovered a shallow line of rocks, about 45 cm deep. That looks like the continuation of the inner (southern) line of D. Boon. Now that we have cleared this area, it looks as if D. Boon was a very early construction - a very thick wall, and that the structure formed by Lint, Ronan Ivy, Lux, and Falling James was built over top of D. Boon, as was Chava. We have a possible line running from Lyle northward, extending over top of D. Boon. We may remove this - it is not clear whether it is a line or not. Lot 16p/85, Unit 54p, level 1, 0 - cm, will expose the inside of the room formed by T.H.S., Parby, Jeff, + Lyle.

4/21/95 (cont'd)

We have finished lot 16p/83. Charlie appears to come to an end here. We will now look for a wall line running north from Charlie toward Graene with Lot 16p/84, Unit 55p, level 1, 0-55cm. We will continue lots 16p/84, 16p/85, + 16p/86, on Monday. We left the field at three.

4/24/95

We arrived today at 7:40 A.M. We will begin by continuing with the three lots we were working on at the end of the day on Friday. I hope to finish excavations this week, and take final notes and plan drawings next week. We have finished Lot 16p/84. There does appear to be a line running north from Charlie to Graene, and then on to possibly form a doorway to a room defined by Darby, Graene, & Gabby. This line will be called Dave Smalley. We will now begin some final, secondary exploratory excavations. Our first one will be to follow Lucky Lehrer west to see if 1. it is actually a line & 2. if it is a line, where it goes. This will be Lot 16p/87, Unit 56p, level 1, 0- cm. We have finished Lot 16p/86, clearing the east side of Dave Smalley. Lot 16p/88 will be Unit 57p, level 1, 0-55cm, to clear the west of Dave and see if Graene continues east past Dave. We have finished Lot 16p/88. Dave Smalley has been completely cleared, and there are no other lines extending eastward from this wall. This brings excavations to the south to a close. We will now begin another secondary exploration, clearing the eastern face of the line Soo-Yang Parks. This will begin with Lot 16p/89, Unit 56p, level 1, 0- cm. We have finished Lot 16p/85, exposing more area inside the room bounded by T.S.H., Kyle, and Darby. There may be a line running N/S & parallel to Jeff Pettigati running along the very eastern edge of the unit. We have pulled a large amount of bahn uque, sherds, obsidian & other lithics, and shell from this area. The shells are both rounded snail shells, and the conical shells sometimes found - this suggests the possibility of the utilization of this room for food preparation. Many of the shells have holes in them - perhaps from extraction of the animal. We will now start Lot 16p/89, Unit 58p, level 1, 0- cm, clearing along the north side of Darby.

4/24/95 (cont'd)

We have finished Lot 160/108. Soo-Yang Parks turns out to be a long thick wall, running north from the entry feature formed by Jan, Lee Ving, and Klaus, after a 15cm space. Tomorrow we will excavate more along Soo-Yang. We have also finished Lot 16p/87. Lucky Lehrer does continue west, and it forms a beautiful line with the outside appearing to face north, suggesting a possible room to the south. Tomorrow we will continue to follow Lucky west - if this is a room, we may not have time to excavate it totally. We will also continue Lot 16p/89 tomorrow. We have continued to find a substantial amount of shells here, and we have also uncovered another burial - three long bones are visible. I will cover them with plastic and begin excavating tomorrow to see how much of the body is preserved. We have pulled out only a few pieces of bone and what would appear to be a hand bone, so hopefully most of the body will still be intact. We left at 3.

4/25/95

We arrived today at 7:30 A.M. This morning we will continue Lot 16p/89, and will hopefully clear more of the burial. We will also begin Lot 16p/90, Unit 59p, level 1, 0-15 cm & Lot 160/109, Unit 570, level 1, 0-65cm. While I work on the burial, I will have the workers begin Lot 16p/91, Unit 60p, level 1, 0-15cm to clear the last part of Lyle and the western side of Jeff.

We have finished Lot 160/109. Soo-Yang Parks continues north, but because it appears to be the outer wall of a structure just off the base of Richards Hill & David Yon, it will not be excavated further. Victorians has begun cleaning the northern & eastern areas of the excavations. We have finished Lot 16p/89. We will collect the burial and the related artifacts as a separate Lot 16p/92. We have found two beautiful polychrome bowls, completely intact in context with the burial. We are also taking a soil sample. We are cleaning for Ed to draw the burial and photograph it.

4/25/95 (cont'd)

We have finished Lot 16p/90. Lucky ends ~~and~~ at a cross wall running both N+S. Tomorrow we will follow this wall in both directions. I will spend the rest of the day helping Ed draw the burial + bowls. Tomorrow will finish Lots 16p/91 + 16p/92. We left at 3:00

4/26/95

### Notes for burial.

The jaw bone was located at a depth of 45cm below surface, the bowls were located at 55cm. While near the burial horizontally, both bowls were slightly lower than the bones, which may mean that they were actually not in association with the burial. Today I will remove the bones. We will excavate the entire room to a depth of 60cm, in order to find any other possible artifacts at the same depth as the bowls. The area surrounding the burial, 50-60 cm, will be 16p/93.

We will also begin following the N/S line that abuts the western end of Lucky. This line will be called Fach de la Rocha. Lot 16p/94 will be Unit 60p, level 1, 0 - cm, following Fach to the south, and Lot 16p/95 will be Unit 62p, level 1, 0 - cm, following Fach to the north.

\* The drawing of the burial is P95-72-3. The two bowls found near the burial have been taken in separately, one is an intact Ulu polychrome, and the other is a local polychrome. A soil sample was taken from the soil surrounding the bowls, as the soil was very fine and contained a large amount of very small shells or seed casings, I'm not sure which. The room the burial was found in is formed by T.B.H., Lyle Prieslar, Darby Crash, and Jeff Peticati. We still need to clear a little more junk from Unit 60p. Lot 16p/96 will be Unit 60p, level 2, 15-60 cm. This will finish excavations on the all the major constructions of this complex. We have finished Lot 16p/94. Fach goes south, and then appear to take a corner to the west. It may also keep going south, and Keith Morris, which now appears to be a floor, shows up here also. Lot 16p/97 will be Unit 61p, Level 2, 20 - cm.

9/26/95 (cont'd)

We have finished Lot 16p/93. We pulled a very large amount of large chunks of Baja regge out in this lot. It is pretty clearly house Baja regge. One large chunk, measuring about 15 cm long x 12 cm wide x 6 cm thick is very flat and has very clear stick marks. We also found some shells, mostly the small conical ones. We will now begin Lot 16p/94. We have finished Lot 16p/97, where there appears to be a well running E/W across the end of Zach, parallel to Lucky. This line, which will be called Brendan Conty, continues west, but will not follow it because it appears to be the corner of yet another structure. We will, however, excavate to the east, to expose the eastern lengths of Brendan and also Keith. This will be Lot 16p/98, Unit 63p, Well 1, 0 - cm. I have named the short, very shallow line that runs between Lyle and Chavo "Guy Piccolo" - I believe this line is part of some very late construction, perhaps from the same period as Chavo. We have finished Lot 16p/95. Zach continues north, and there may be a line running off to the east, which is probably the western end of Johnny Thunders. Ed said he wants to see what is going on in this area, so tomorrow we will excavate along the Johnny Thunders, and then continue following Zach north. We have finished Lot 16p/96. This finishes central excavations on complex 53p/16. We have exposed the west side of Jeff Pezzicatti, a very shallow line, probably contemporary with Guy and Chavo. Lot 16p/96 yielded a large amount of substantial chunks of Baja regge, as well as more shells. We have finished Lot 16p/98. Zach corners to the west with Brendan here and stops. Brendan only runs west from Zach, and to the east is Keith, a floor feature made of large cobbles. We will not excavate further in this area. We will stop excavations here for the day.

4/27/95

This morning we will begin Lots 16p/99-101. Lot 16p/99 will be Unit 64p, level 1, 0-20cm, in the southwest of the excavations, to see if Johnny Thunders connects with Fach de la Rocha. Lot 16p/100 will be Unit 65p, level 1, 0-20cm, in the southeast of the excavation, clearing a small area near the third circular feature (Bob World) in order to hopefully clarify what these circles may have been used for. Lot 16p/101 will be Unit 66p, level 1, 0-20cm, a 1m x .5m unit, also clearing area near Bob World. Meanwhile, I will begin taking final notes on the north structure. We have finished lots 16p/99 + 16p/101. In lot 16p/99, we have dug to 20cm. It is still unclear whether Johnny Thunders is here or not. Lot 16p/102 will be Unit 64p, level 2, 20 - cm. In lot 16p/101, we uncovered no construction, and no signs of trouble either. It appears that this is the southern extent of the complex in this area. Lot 16p/103 will be Unit 67p, level 1, 0-20cm, following Fach de la Rocha north past Johnny Thunders. We have also finished lot 16p/100. We have gone down to 20cm here, and here uncovered no construction here either. There is some trouble, but from the north west corner of the unit - to the south + east there is nothing. We have gotten a substantial amount of freights from these first 20 cm. Lot 16p/104 will be Unit 65p, level 2, 20 - 60cm. We have finished lot 16p/103. Lot 16p/105 will be Unit 67p, level 2, 20 - cm. We have finished lot 16p/104. There seems to be nothing here but trouble. Now we will excavate a little deeper on the south side of Bob World, to expose its southern exterior. This will be lot 16p/106, Unit 9p, level 3, 40-60cm. This morning I took all final notes on the northernmost structure in the complex. I have decided to name each structure for a city that had a big peak scene, and all non-wall features will be named after music groups. All rooms will be named after record labels.

We have found another muerta in lot 16p/105. I will work on it tomorrow - at left of Three.

4/28/95

Yesterday we finished all the lots we had been working on. Johnny Thunders does not continue the eastern way to Zach, but rather appears to form a doorway with another short wall running east from Zach. This wall will be called Joe Strawberry. The burial was found inside this small room formed by Lucky, Zach, Johnny, Champion Pig, and Joe Strawberry. It rained last night, so I may not work on the burial at all today. I forgot to set up a datum for depth measurements on final notes yesterday, so I need to do that.

We will begin lots 16p/107 + 16p/108 this morning. (and 16p/109)  
 Lot 16p/107. Lot 16p/107 will be Unit 66p, level 2, 30-cm, to expose more of the area south of Bob Mould. Lot 16p/108 will be Unit 68p, level 1, 0-cm to expose the western side of Zach de la Rocha. Lot 16p/109 will be Unit 69p, level 1, 0-20 cm, to remove the bulk of dirt just to the north of Johnny Thunders. We have finished lot 16p/109. At 20cm, it does not appear as if any construction is here. Lot 16p/110 will be unit 69p, level 2, 20 or cm. In lot 16p/108, unit 68p, we have uncovered what appears to be the corner of a totally different structure. We have finished 16p/108. As stated above, we have seemed to have found the basal edge of another structure. We will follow this northward until we connect with the original axial trench. This structure will not be excavated. We have finished lot 16p/107. We may have uncovered yet another very small circular feature. We will excavate unit 70p, level 1, 0-cm, lot 16p/111 to expose more of this feature. This area is very problematic. I suspect that I will be digging here for longer than I expected. We have begun ~~the~~ lot 16p/112, Unit 71p, level 1, 0-cm. This unit will expose more of the trench/basal line of the other structure to the west. We have finished lot 16p/110. There appears to be a line running north from the end of Johnny Thunders here. This line will be called Wayne County. I have also named the line that runs east from Zach towards Johnny Joe Strawberry. We have begun lot 16p/113, Unit 72p, level 1, 0-cm. We will follow Wayne county north in this unit. We have finished lot 16p/111. We have definitely found another circular feature, ~~however~~ we will continue lots 16p/112 + 16p/113. We left at 3. Tuesday

5/2/95

We arrived at 7:40 this morning. We will continue Lot 16p/113, and begin Lots 16p/114 + 16p/115. Lot 16p/114 will be Unit 71p, where we will be clearing the tumble from the basal wall of the new structure we have uncovered here. Lot 16p/115 will be Unit 73p, 0-60cm, level 1, to clear the southern edge of the small circular feature we found on Friday. This feature will be called G.G. Allen, I will begin more work on the burial found last week in Unit 69p. We have finished Lot 16p/113, he will continue deeper with Lot 16p/116, Unit 72p, level 2, 20-46cm. We have finished Lot 16p/116. Wayne County continues north through Unit 72p. We pulled a large amount of obsidian flakes and tools from this Unit also. We will now follow Wayne north with Lot 16p/117, Unit 74p, level 1, 0-20 cm. We have finished Lots 16p/114 + 16p/115. We have exposed the southern edge of G.G. Allen, and now will dig a little deeper in Unit 11p to see if Darby continues the whole way east to G.G. This will be Lot 16p/120, Unit 11p, level 2, 20- cm. We have cleared the tumble in Unit 71p, to expose what may be a low basal line beneath tumble. We will now move to Unit 75p, level 1, 0- cm, Lot 16p/119. The bones and artifacts from the burial are being collected as Lot 16p/118. The burial has been photographed and drawn. All that has been found are some long bones, all badly smashed against the rocks at Paul Miller, a wall running from underneath Zach to Abutt Guy Helson. I will now pull out the bones. We have finished Lot 16p/120. Darby does abutt G.G. on the west side. We have finished Lots 16p/117 + 16p/119. We will stop here for the day. I believe we will finish digging tomorrow!!

5/3/95

Today we will finish excavation and begin cleaning. This morning we will start with Lot 16p/121, Unit 76p, level 1, 0-60cm to clear further along the far western wall (which will be called Nikki Garrett). Lot 16p/122 will be Unit 77p, level 1, 0-20cm to see if East Bay Ray continues to the south on its eastern end, and Lot 16E/71 will be Unit 15, level 1, 0-60cm, extending the axial trench one more meter + to expose more of Nikki.

We have finished Lot 16p/122. We are getting a large amount of trestles from here, and then in a large amount of trestles. We will continue deeper with Lot 16p/123. We have finished Lot 16p/123. We got a huge amount of trestles from this lot - obviously this area was part of the fill/midden that yielded so many trestles in the eastern half of my axial trench. There is no line running south from East Bay Bay here. These workings will now begin cleaning. I have numbered all the walls and features for shooting-in with the transit. Ed and I will probably do this tomorrow. A note: I have decided that the eastern 1.5 m or so of D. Boon was actually a later addition, as D. Boon's original eastern end is visible on the south side. This addition has been given the name Paul Simonon. We have finished Lot 16E/11. We have extracted a large amount of trestles here, also. We have exposed a wall line I will call Chris D. This line runs parallel to Nikki, but is constructed of a single line of large cobbles, and is slightly offset to the east from Nikki. We have also finished Lot 16p/121. We have exposed Nikki to where it runs behind Chris D. A large amount of trestles was taken from this lot also. We will now return to Unit 69p, where the burial was, and excavate along the space between Paul Heller and Lucky Lehrer down to the level of the burial, exposing more of Paul. Paul Heller appears to be an early construction, running ~~from~~ <sup>from</sup> under Zach east to run under the south end of Greg's, to appear as the north side of Kiva - running all the way east to Greg Ginn. Upon further excavation, it is clear that ~~Paul~~ Chris D. ~~Simonon~~ & Nikki are the same line. <sup>Chris</sup> ~~Paul~~ will be dropped. Lot 16p/124 will be Unit 69p, space between Paul Heller and Lucky Lehrer, 45-60 cm. We have finished Lot 16p/124, and have cleared the area between the two lines to expose two very good, flat wall faces, the southern of Paul Heller, and the northern face of Lucky Lehrer. This concludes excavations on structure complex 530p16. I have the workers cleaning the site now in preparation for photographs, and I have numbered all the features in preparation for shooting in points. We will clean for the rest of the day.

# Final Notes for Complex 530p 16 4/27/95 - 5/7/95

## Datum meas.

### North Structure: The L.A. Structure 475

Black Randy: a wall running  $98^\circ$  E of N; ~~502~~ 502 cm long; 31 cm wide;

Depth of bases of wall: east end = 13.5 cm, west end = 39 cm, center = 50 cm. Corners to the east end = -148 cm south with Richard Hell on the east end, and with Pat Bay on the west end, west end = -123.5 cm. Is abutted by Brian Baker on the south side, 193 cm from west end. Wall is constructed of cobbles, ranging from medium to large, and is jumbled construction. At points along the wall, some flat faces can be seen facing to the north.

Pat Bay: wall running  $9^\circ$  E of N; length = 447 cm; width = 48 cm;

base depth: north end = -123.5 cm, south end = -105 cm. depth, north end = 40 cm, center = 41 cm, south end = 56 cm. corners to the east with Black Randy on the north end and with Spot on the south end. Wall is constructed of cobbles, medium sized with small cobbles packed in between,

in courses, five high on south end, four high on north end. Clear flat faces westward

Spot: wall running  $101^\circ$  E of N; 257 cm long; width = 64 cm;

base depth: west end = -105 cm, east end = -140.5 cm. depth, east end = 53 cm, center = 31 cm, west end = 56 cm. Corners to the north with Pat Bay on west end and with Brian Baker on east end. King Roeser appears to have been added on to Spot, parallel to it and just to the south of it, beginning 216 cm from west end of Spot. Cobblestone construction, medium cobbles, with small ones packed in between, built in courses, five on west end, four on east end. Definite flat outer faces to the south.

Brian Baker: wall running  $11^\circ$  E of N; length = 425 cm; width = 57 cm;

base depth: south end = -140.5 cm, north end = -141 cm. depth, south end = 53 cm, center = 57.5, north end = 47 cm. Corners to the west with Spot on the south end, abuts Black Randy on the north end. Is abutted by King Roeser on the south end, by Penelope Houston on the east side, 102 cm from south end, and Steve Albini on the east side, 142 cm from north end. Cobble construction, ranging from small to large, three courses high with small cobble packing. Flat faces to the east

King Roeser: wall running  $99^\circ$  E of N; length = 267 cm; width = 47 cm;

base depth: west end = -127 cm, east end = -139.5 cm. depth, west end = 41 cm, east end = 45.5 cm. Corners to the north with Richard Hell on the east end, abuts the corner of Spot and Brian Baker on the west end.

datum

King Roeser: (cont'd) cobble construction, medium sized cobbles with small rubble packing, particularly on northern side. Southern side shows three rough courses of cobbles. flat faces on the south side

Richard Hell: wall running  $12^\circ$  E of N; length = 493 cm; width = 34.5 cm;

basal depth:  
north end = -148 cm  
south end = -155.5 cm

depth, south end = 29 cm, center = 16 cm; north end = 28 cm. Corners to the west with Black Randy on the north end, and Spot on the south end, and is abutted on the west side by Steve Albini, 170 cm from north end; and Penelope Houston, 322 cm from north end. Richard Hell is built over top of Robert Quine. Constructed of large, flat river cobbles, two courses high, with small cobbles packed on the inner side (west side) of wall. Flat faces to the east.

Robert Quine: wall running  $14^\circ$  E of N; length = 910 cm (starts flush with north end of Richard Hell); width = undetermined because Richard Hell was built over top at western side of Robert. depth = @ 9 cm. Constructed of large/medium-sized, flat cobbles, one <sup>course</sup> layer deep. Flat faces to the east

basal depth:  
north end = -148 cm  
south end = -158 cm

Steve Albini: wall running  $104^\circ$  E of N; length = 195 cm; width = 37 cm;

depth, west end = 68 cm, east end = 43 cm. Abutts Richard Hell on the east end, Brian Baker on the west end, and is abutted by the Clash stair feature on the southern side at its west end (extending from western end east 55 cm.

Built over top of Burial 1. Medium cobble construction, jumbled with small cobble packing. No flat faces.

Penelope Houston: wall running  $104^\circ$  E of N; length = 190 cm; width = 33 cm;

depth, west end = 46.5 cm, east end = 24 cm. Abutts Richard Hell on east end, Brian Baker on west end. Medium-large cobble construction, two courses high, with small rubble packing. Flat faces to the north.

Clash Stair Feature: two steps leading up from Touch N Go Room to the

Discharge Room. Abutts Steve Albini on north end, and is built up to Brian Baker. First (lower) step, Joe Strummer runs  $12^\circ$  E of N, length = 67 cm, width = 34 cm, depth = 22 cm. Abutts Steve Albini on north end. Second step,

Meck Jones, runs  $15^\circ$  E of N, length = 61 cm, width = 26 cm, depth = 13 cm.

Both steps are built with medium cobbles. Joe consists of two layers of cobbles, two cobbles wide. Meck consists only of three larger cobbles side by side, placed on top of rubble to lay 35 cm above Joe, 57 cm above base of Brian Baker. Both step have flat faces to the east.

basal depth:  
Strummer = -152 cm  
Jones = -123 cm

Dischord: room formed by Pat Bag, Black Randy, Brian Baker, and Spot. Inner dimensions: 334 cm long (N/S) x 160 cm wide (E/W). Room is a rectangle broken by two small walls/beaches extending west from Brian Baker. The first of these, Jon Wright, measures 38 cm long (out from Brian) x 58 cm wide, and juts out from Brian 180.5 cm from its north end. The second of these, Rob Wright, takes up the corner formed by Brian and Spot, extending 53 cm west from Brian and 49 cm north of Spot. Dischord contains Big Black, a burn feature in the southern half of the room (see Notes P95-72-49 & P95-72-50) as well as Minor Threat, the remains of a mud plaster floor in the northern half of the room (see Notes P95-72-48 & P95-72-50).

Quarterstick: room formed by Brian Baker, Black Randy, Richard Hell, and Steve Albin. Interior dimensions: 178 cm (E/W) x 147.5 cm (N/S). Room is in the extreme northeast corner of L.A. structure. Burial ~~one~~ I was found here, in the southern central part of the room, under Steve. (see Notes P95-72, 44, 45, 46)

Touch n' Go: room formed by Brian Baker, Steve Albin, Richard Hell, and Penelope Houston. Interior dimensions: 180 cm (E/W) x 125 cm (N/S). Clash stair feature is in the northwest corner of this room.

Skin Graft: room formed by Brian Baker, Penelope Houston, Richard Hell, and King Roeser. Interior dimensions: 174.5 cm (E/W) x 96 cm (N/S). Fear, a very large burnt-carb feature, is located in the center of Skin Graft (see Notes P95-72-46)

## Structure 2: the Boston Structure

Alice Bag: wall running 15° E of N. Length = 456 cm, width = 39 cm, depth = north end = 41 cm, south end = 32 cm. Corners to the east with O. on the north end and Tesco Vee on the south end. Constructed of medium-sized cobbles with small cobble packing, in courses, 3-4 courses high. Flat surfaces face westward.

O.: wall running 114° E of N. Length = 248 cm, width = 29 cm, depth, west end = 41 cm, east end = 45 cm. Corners to the south with Alice Bag on the west end. Is abutted by Exene Corvenka 76 cm from west end. Medium cobbles, jumbled construction - no flat faces.

Tesco Vee: wall running 102° E of N. Length = 194 cm, width = 25 cm, depth: west end = 32 cm, east end = 20 cm. Medium cobbles over small cobbles w/ small cobble packing. Flat faces to the south. Corners to the north with Alice Bag on the

### Datum

depth of floor =  
-117.5 cm

depth of Big Black =  
-112.5 cm

depth of Minor Threat =  
-109.5 cm

depth of floor =  
-153.5 cm

(cross  
reference)

depth of floor =  
-149 cm

depth of Fear =  
-139.5 cm

(cross  
reference)

basal depth:  
south end = -107.5 cm  
north end = -99.5 cm

basal depth:  
west end = -99.5 cm  
east end = -130.5 cm

basal depth:

Datum:

West end = -107.5 cm  
East end = -131 cm

Tesco Vee (cont'd): west end, is abutted by Exene Cerventa 91 cm from west end.

Exene Cerventa: wall running  $12^\circ$  E of N. Length = 398 cm, width = 44 cm, depth, south end = 57 cm, north end = 23 cm. Abutts Tesco Vee on the south end and D. on the north end. It is abutted by National Kato 109 cm from north end. At one time was probably also abutted by Blackie Onassis 25 cm from north end. North end is very shallow, and may have been built over top of fill or natural land form, or it may also have been a late addition to rest of wall. Constructed of medium-large cobbles, very jumbled, no courses - flat faces appear to face west.

basal depth:  
south end = -114.5 cm  
north end = -86 cm

Blackie Onassis: Wall running  $98^\circ$  E of N. Length = 284 cm, width = 34 cm, depth, west end = 19.5 cm, east end = 40 cm. Probably cornered to the south with John Doe on the east end, and abutted Exene on the west end.

Medium-large cobble construction, rather jumbled, no clear courses. Flat faces to the north. The west end of Blackie falls short of Exene by 47 cm.

National Kato: wall running  $98^\circ$  E of N. Length = 187 cm, width = 28 cm, depth, west end = 16 cm, east end = 13 cm. Abutts Exene on the west end, may have at one time cornered with John Doe to the north. This line is very shallow, and appears to have been built very late, probably over top of fill. If it did extend east to corner with John Doe, it was built over the north end of Stiv Bators and the north edge of Pat Smear. It is composed of a single line of medium/large cobbles, with no real flat face on either side.

John Doe: the remains of a wall running  $11^\circ$  E of N. Length = 44 cm, width = 26 cm, depth = 32 cm. This "wall" is only two rocks long - it probably at some point cornered to the west with Blackie Onassis on the north end, and with National Kato on the south end. The rocks are large cobbles, with no clear flat faces. They lie over top of David Yow and the eastern end of Pat Smear.

David Yow: Wall line running  $12^\circ$  E of N. Length = 268 cm, width = 32 cm, depth, south end = 18.5 cm, north end = 12 cm. Runs from underneath the corner of Eric Boucher and Cheetch Chrome on the south end, under the eastern end of Pat Smear, to end just under the eastern end of King Royster. Of large cobbles, one course high, flat faces to the east. It is possible that this wall actually corners with Pat Smear and does not continue further north.

basal depth:  
east end = -110.5 cm  
west end = -83.5 cm

basal depth:  
-138 cm

basal depth:  
-165 cm

datum:

basal depth:  
-174.5 cm

Soo-Young Parkes: Wall running  $15^\circ$  E of N. Length = 194 cm (to where the wall disappears into wall of excavation). Width = 65 cm, Depth = 54 cm. Wall of very large cobbles over smaller cobbles. Flat faces to the west. Apparently this is a part of another structure, and therefore was not excavated completely.

basal depth:  
-143 cm

Pat Smeay: wall line running  $103^\circ$  E of N. Length = 212 cm, width = 30 cm, depth = east end = 29 cm, west end = 15 cm. Corners ~~with~~ to the south with Stiv Bators on the west end, abutts David Yow on the east end. Wall of medium-sized cobbles, originally 3-4 courses deep, now only one for majority of line. Two lines wide, very formally constructed, flat faces to the north. At one point was probably built over by Natsional Kato.

basal depth =  
-141 cm

Stiv Bators: wall running  $11^\circ$  E of N. Length = 93 cm, width = 38 cm, depth = 28 cm. Corners to the east with Pat Smeay on the north end, Abutts Cheetah Chrome on the south. Constructed of medium-large cobbles over small cobbles, no clear courses, rather jumbled construction. Flat faces to the east.

basal depth =  
West end = -118.5 cm  
East end = -147 cm

Cheetah Chrome: Wall running  $102^\circ$  E of N. Length = 319 m, width = 31 cm, height (depth) = east side = 22 cm, west side = 34 cm. Corners to the north with Henry Rollins on the west side. Corners to the south with Eric Boucher on the east side. Is abutted on the north by Stiv Bators, 149 cm from east end. East end is built over top of southern end of David Yow. Constructed of medium cobbles over small cobbles in three courses. Flat faces to the south. Small cobbles packed between larger ones.

basal depth:  
-118.5 cm

Henry Rollins: Very short wall running  $4^\circ$  E of N. Length = 77 cm, width = 30 cm, height = 26 cm. Corners to the east with Cheetah Chrome on the south end. Very jumbled medium sized cobble construction, no flat faces.

basal depth:  
-153.5 cm

Eric Boucher: Short wall running  $110^\circ$  E of N. Length = 66 cm, width = 51 cm, ~~depth~~ height = 49.5 cm. Corners to the west with Cheetah Chrome on the north end. Built slightly overlapping the south end of David Yow, Is abutted on the southern end by Lee Ving, which runs east from Eric. Constructed of large cobbles over medium cobbles, very poor construction, no real flat faces.

basal depth  
-172 cm

Lee Ving: Wall running  $97^\circ$  E of N. Length = 102.5 cm, width = 20 cm, height = 30 cm. Corners to the south with ~~Sam~~ Klaus Flouride on the east end. Abutts Eric Boucher on the west end. Forms north side of the Avengers entrance feature. Jumbled construction of large & medium cobbles. No flat faces. Eugazi

Datum  
basal depth:  
-185.5 cm

Klaus Flouride: wall running  $15^\circ$  E of N. Length = 99.5 cm, width = 26 cm, depth = 30 cm. Corners to the west with Lee Ving on the north and Ian Mackaye on the south. Forms eastern side of Fugazi entrance feature. Constructed of medium to large sized cobbles, rather informal, no courses, flat faces to the east.

basal depth:  
-180 cm

Ian Mackaye: short wall running  $101^\circ$  E of N. Length = 75 cm, width = 37 cm, height = 24 cm. Corners to the north with Klaus Flouride on the east, abuts Jello Biafra on the west. Forms south side of Fugazi entrance feature. Constructed of one large cobble over top of small cobbles, and with small cobbles on the west end. Jumbled construction, no flat faces.

basal depth:  
-177.5 cm

Jello Biafra: Wall running  $14^\circ$  E of N. Length = 95 cm, width = 56 cm, height = 63 cm. Corners to the west with Watty on the south end. Is abutted by Ian Mackaye on the north end, with Ian running east at a right angle. Forms a doorway with Eric Boucher into Alternative Tentacles room, 55 cm wide (n/s) fronted to the east by Fugazi entrance feature. Constructed of large cobbles over small cobbles. Poor construction, with slightly flat faces to the east.

basal depth:  
-146.5 cm

Watty: Wall running  $107^\circ$  E of N. Length = 129 cm, width = 31 cm, height = east end = 63 cm, west end = 47 cm. Corners to the north with Jello Biafra on the east end. Abuts D. H. Peligra on the west end, although it may actually have built over top of D. H. Very, very poor construction of medium cobbles over small cobbles and fill. May have simply been a retaining wall to hold back the fill located to the south of Watty. No flat faces.

basal depth:  
-147 cm

D. H. Peligra: shallow line running  $25^\circ$  E of N. Length = 171 cm, width = 26 cm, height = 16 cm. A single line of rocks, one medium cobble wide and one deep - may extend past East Bay Ray another 74 cm to abut the northern side of Geza X. Abuts East Bay Ray on the south end, and is abutted on the east by Watty, 89 cm from north end. Watty is probably later construction and at one time may have extended over top of D. H. Possibly flat faces to the west.

basal depth:  
east end = -181.5 cm  
west end = -141 cm

East Bay Ray: shallow wall line running  $115^\circ$  E of N. Length = 277.5 cm, width = 25 cm, height = east end = 18 cm, west end = 4 cm. A single line of rocks, one medium cobble wide, one deep. May corner to the south with lines on each end. Is abutted on the north by D. H. Peligra 110 cm from west end. No flat faces. Appears to be part of very early stage of construction.

datum

floor depth:

western half = -119cm

eastern half = -145.5cm

Alternative Tentacles: room formed by Exene Cervenka, Cheetah Chrome, Tesco Vee, Watty, Eric Boucher, and Jello Biafra. Interior dimensions = 308 cm (E/W)  $\times$  164 cm (N/S). Eric and Jello form a doorway to the east, opening out onto the Fugazi entrance feature. 44 cm gap between Exene and west end of Cheetah's former entrance to Amphetamine Reptile room. There is a 155 cm gap in the south wall of room, between east end of Tesco Vee and western end of Watty. D. H. Peligra extends into the center of room from the south, either dividing it into two smaller sections of two rooms, or simply underlying the floor surface as part of previous architecture. A very large amount of domestic artifacts were found in this room, including shell and 6 main fragments (See Notes P95-72-20, P95-72-21, P95-72-22, P95-72-23, P95-72-24) (See also Notes P95-72-17 & P95-72-18)

floor depth:

-119.5 cm

Amphetamine Reptile: room formed by National Kato, Stiv Bators, Cheetah Chrome, and Henry Rollins. Interior dimensions = 107 cm (E/W)  $\times$  97 cm (N/S). Henry forms a doorway 44 cm wide with National Kato. The entire floor of this room is formed by the Superchunk burn feature, particularly the eastern half of the room (See Notes P95-72-19, P95-72-23)

Room may have originally have been much wider (N/S), but National Kato was built over top of the northern part of it.

Dangerhouse: room formed by Stiv Bators, Pat Smear, David Yow, and Cheetah Chrome. Interior dimensions = 134.5 (E/W)  $\times$  63 cm (N/S).

floor depth:

-143 cm

Descendents: shelf/bench feature formed by Exene Cervenka, Tesco Vee, Alice Bag, and O. Dimensions = 456 cm (N/S)  $\times$  125 cm (E/W) on south end, 103 cm (E/W) on north end. Large amount of baja rope on top surface. ~~Abutts~~ <sup>Abutts</sup> to the east with Pegboy bench feature.

platform depth:

-70 cm

Pegboy: shelf/bench feature formed by Exene, Blackie Onassis, National Kato, and John Doe. Dimensions = 370 cm (E/W)  $\times$  104 cm (N/S). Abutts Descendents bench feature on the west end, apparently a late addition to the Boston Structure, built over the north edges of Amphetamine Reptile and Dangerhouse rooms.

platform depth:

west end = -72.5 cm

east end = -100 cm

Fugazi's Entrance feature formed by Lee Ving, Klaus Flouride, and Jon Mackaye. Dimensions = 113 cm (N/S)  $\times$  101.5 cm (E/W). Forms a small step/patio directly in front (to the east) of the doorway into the Alternative Tentacles room.

platform depth:

-152 cm

datum:

depth:  
-160.5 cmGuzzard: Burn feature located between Watty and East Bay Ray (See Notes P95-72-10, P95-72-11).depth:  
-187.25 cmGavnt: Burn feature located in Unit 1 of the excavations, directly east of the east end of East Bay Ray and south of the Fugazi feature. (See Notes P95-72-4).depth:  
-182.5 cmWreck: Burn feature located at the north eastern base of the Fugazi feature, extending under the corner of Klaus and Lee. (See Notes P95-72-14 & P95-72-15)depth:  
-128.5 cmFuel: Burn feature located between Tesco Vee and D. BoonStructure 3: The New York Structurebasal depth:  
east end = -75 cm  
west end = -65.5 cmPoison Ivy: Wall running  $98^\circ$  E of N. Length = 259 cm, width = 69 cm, height = west end = 34 cm, east end = 46 cm. Corners to the north with Lux Interior on the west end, with Lint on the eastern end. Constructed of large cobbles (especially the northern side of wall), over small cobbles, flat faces to the south. No clear courses. East end is built over western end of D. Boonbasal depth:  
south end = -65.5 cm  
north end = -72.5 cmLux Interior: Wall running  $9^\circ$  E of N. Length = 262 cm, width = 66 cm between Poison Ivy and Falling James, 42 cm to the north of Falling James. Corners to the east with Poison Ivy on the south end, is abutted by Falling James on the east side, 81 cm from north end. Height = south end = 34 cm, north end = 14 cm. Constructed of medium/large cobbles with small cobble packing. No courses or flat faces.basal depth:  
-64 cmFalling James: wall running  $98^\circ$  E of N. Length = 235 cm, width = 51 cm, height: west end = 54 cm, east end = 58 cm. Abutts Lux Interior on the western end. Is built over top of Lint on the east. Constructed of large cobbles over medium and small cobbles. No clear courses, but still pretty formal construction. Flat faces to the south.Lint: wall running  $2^\circ$  E of N. Length = 330 cm, width = 38 cm, height = 46 cm. Corners to the west with Poison Ivy, where it is built over top of D. Boon. Is abutted by one built over by Falling James, 148 cm from north end, and is abutted by Poly Styrene 50 cm from North end. Constructed of large cobbles over small/medium cobbles, two courses, with flat faces to the east.

datumbasal depth:  
-62.5cm

Poly Styrene: short wall running  $100^\circ$  E of N. Length = 82 cm, width = 44 cm, height = 15 cm. Abutts Lint on the east end. Constructed of medium cobbles with small cobble packing. Semi-formal construction, only one layer deep, flat faces to the north.

basal depth:  
-64 cm

Milo: short line, perhaps a step, lying 28 cm to the west of and running roughly parallel to Lux Interior;  $10^\circ$  E of N. Length = 121 cm, width = 38 cm, height = 20 cm. Constructed of only <sup>three</sup> large cobbles, and one cut schist slab, with small cobble packing, flat faces appear to face to the west.

basal depth:  
-77.5 cm

Billy Childish: wall running  $8^\circ$  E of N. Length = 231 cm, width = 39.5 cm, height = 38 cm. Corners to the west with Captain Sensible on the south end, and with Rat Scabies on the north end. Constructed of very large cobbles over small ones, with small and medium cobbles used for packing. No courses, but still very formal construction, with flat faces to the east.

basal depth:  
-76 cm

Captain Sensible: short wall running  $97^\circ$  E of N. Length = 64 cm, width = 34 cm, height = 36 cm. Corners to the north with <sup>Billy Childish</sup> ~~Captain Sensible~~ on the east side. Constructed of a single large cobble over medium/small cobbles, rather jumbled construction. Flat face of large cobble faces to the south.

basal depth:  
-75.5 cm

Rat Scabies: short wall running  $96^\circ$  E of N. Length = 65.5 cm, width = 35 cm, height = 17 cm. Corners to the south with Billy Childish on the east side. Constructed of medium and small cobbles. Jumbled, semi-formal construction, flat faces to the north.

floor depth:  
-65.5 cm

Lookout!: Room? formed by Poison Ivy, Falling James, Lux Interior, and Lint. Interior dimensions: 160 cm (E/W)  $\times$  50 cm. There is no visible entrance to this tiny space. It is very small for a room, and Poison Ivy and Falling James are both abnormally large walls for such a structure. There is a possibility of this being a kiln, but very little pottery and baja regre was found in association with it.

basal depth:  
-76.5 cm

Push Boy: Room formed by Falling James, Lux Interior, Lint, and Poly Styrene. Interior dimensions: 137 cm (E/W)  $\times$  65 cm. An 85 cm wide doorway is formed in the western half of the northern wall between the west end of Poly Styrene and the north end of Lux.

datum  
floor depth  
- 71 cm

C/Z: Small room or step/patio formed by Billy Childish, Captain Sensible, Rat Scabies off the eastern face of Lint. Interior dimensions: 166 cm (N/S) X 56 cm (E/W). Captain Sensible falls short of Lint by 35 cm, Rat Scabies falls short of Lint by 24 cm.

#### Structure 4: The D.C. structure

D. Boon: Wall running  $100^\circ$  E of N. Length = 409 cm, width = 79 cm, height = west end = 7 cm, center = 95.5 cm, east end = 64 cm. The very north west corner of D. Boon was built over by the southeast corner of the New York Structure. Chavo was built over top of the northern side of D. Boon, starting about 105 cm from western end. Guy Picciotto's northern end just extends over top of the southern edge of D. Boon, 74 cm from western end. Bill Stephenson abutts the wall on the south side 48 cm from east end. Paul Simonon appears to have been a late addition to D. Boon, extending it further eastward. D. Boon is constructed of two parallel lines of medium/large river cobbles with fill and small to medium cobbles in the spaces between. Small cobbles are packed between the large ones and are visible at the base of the wall. The northern face of the wall shows three clear courses, with flat faces to the north. Very formal construction.

Paul Simonon: Late addition to D. Boon, same orientation. Length = 119 cm, width = 36.5 cm. Height = 58.5 cm. Abutts the western edge of Geza X on the east end, is abutted (probably was built over) by Mike Watt 21 cm from west end. Constructed of medium cobbles with small cobbles packing, very jumbled and ugly. No courses or flat faces.

basal depth:  
- 139 cm

Chavo: Late wall built over top of D. Boon, running  $92^\circ$  E of N. Length = 102 cm, width = 46 cm, height = 44 cm. Constructed of medium/large river cobbles over top of small cobbles. Two courses visible, flat surfaces to the north.

basal depth:  
- 78.5 cm

Mike Watt: Line running  $13^\circ$  E of N. Length = 278 cm, width = 39 cm, height = 14.5 cm. May form the lowest step of stair feature Ed Hall. Disappears under Paul Simonon on its north end. Runs directly behind (to the west of) George Hurley and Bob Mould, overlapping their walls. Lyric Lunch, which forms the second step of Ed Hall, is built directly on the western edge of Mike Watt. It is possible that Mike extends the whole way south to abutt or overlap Derby Crash (another 65 cm).

basal depth:  
north end = 74.3 cm

south end:  
- 127 cm

Mike is constructed of very large cobbles, one deep one wide, in a very straight, formal line. Flat faces are to the east.

Lydia Lunch: line of rocks, possibly forming the second step of Ed Hall, running  $11^\circ$  E of N. Length = 209.5 cm, width = 33 cm, height = 26 cm. Built directly over the western edge of Mike wall. Constructed of medium cobbles, jumbled construction, no courses visible. May be argued that flat faces are to the east.

Bill Stephenson: Wall running  $14^\circ$  E of N. Length = 285 cm, width = 40 cm, height = 19 cm. Abutts D. Boon on the north end, Darby Crash on the south end. May be the last step in Ed Hall, but also is a room wall. Constructed of medium/large cobbles, very shallow, rather jumbled and informal. No flat faces.

Darby Crash: Wall running  $67^\circ$  E of N. Length = 660.5 cm, width = 49 cm, height = 26 cm. Corners to the north with Three Slayer Hippy on the west end. Built over top of Chuck Dukowski's northern edge. Is abutted by Gabby Hayes on north side on the south side 122 cm from west end. Abutted by Jeff Pezzicata 338 cm from east end, Abutted by Tony Adolescent on north side, 278 cm from east end, Abutted by Bill Stephenson on the north side, 152 cm from east end. May be abutted by, or built over by Mike Watt, on the north side 50 cm from east end. Abutts the northern edge of GG. Allen on the east end. Wall like constructed of large cobbles, one course high, at places a second course is visible when it is still present. West end is wider than east end, built over base of small cobbles. Somewhat formal, flat faces to the south.

Three Slayer Hippy: Wall running  $18^\circ$  E of N, Length = 212.5 cm, width = 44 cm, height = 46.5 cm. Corners to the east with Lyle Preslar on the north end, with Darby Crash on the south end. Constructed of medium/large cobbles over a small cobble base. Some small cobbles used as packing. Very formal construction, with three courses showing. Very flat surface to the west.

Lyle Preslar: Wall running  $98^\circ$  E of N. Length = 325 cm, width = 34 cm, height = 23 cm. Corners to the south with Three Slayer Hippy on the west end, with Jeff Pezzicata on the east end. ~~Is abutted~~ Corners to the north with Guy Piccotto on the east end, and Ricki Agnew is built east from the corner of Lyle and Jeff. Constructed of medium/large cobbles, somewhat jumbled. Very shallow line, no courses or flat faces visible.

basal depth:  
-123.4

basal depth:  
north end = -83 cm  
south end = -113.5 cm

basal depth:  
east end = -143 cm  
center = -102 cm  
west end = -86 cm

basal depth:  
north end = -64.5 cm  
south end = -86 cm

basal depth:  
west end = -41 cm  
east end = -37.5 cm

Datum

basal depth:  
-53 cm

Guy Piccioto: Late wall running  $23^\circ$  E of N. Length = 110 cm, width = 36.5 cm, height = 12 cm. ~~Abuts~~ Corners to west with Lyle Preslar on the south end, North end is built over D. Boon. Very jumbled, poor construction, mostly small cobbles, with a few large one on the north end. No courses, and no flat faces.

basal depth:  
-67 cm

Jeff Pezzicatti: Wall running  $13^\circ$  E of N. Length = 262 cm, width = 65 cm, height = 15 cm. Corners to the west with Lyle Preslar on the north end, to the east with Rikk Agnew on the north end. Guy Piccioto is built running north from the north end of Jeff, and Jeff abuts Darby Creek in its south end. Very shallow construction, one cobble deep. Built of large cobbles with small ones used as packing. Rather informal construction, slightly flat faces to the east.

basal depth:  
-70.5 cm

Rikk Agnew: Short wall running  $106^\circ$  E of N. Length = 78 cm, width = 55.5 cm, height = 16 cm. Corners to the south with Tony Adolescent on the east end, Corners to the south with Jeff Pezzicatti on the west end. Forms the north wall of the Lard bench/shelf feature. Constructed of large cobbles, one deep, two wide, semi-formal construction, no flat faces.

basal depth:  
-89 cm

Tony Adolescent: Wall running  $17^\circ$  E of N. Length = 204 cm, width = 18 cm, height = 23 cm. Corners to the west with Rikk Agnew on the north end, abuts Darby Creek on the south end. Forms the east side of the Lard bench/shelf feature. Very jumbled, informal construction of small-medium cobbles, No courses or flat faces.

basal depth:  
north end: -96 cm  
south end: -131 cm

Dave Smalley: Wall running  $18^\circ$  E of N. Length = 261 cm, width = 58 cm, height = north end = 41 cm, south end = 29 cm. Corners to the west with Charlie Herper on the south end. Is abutted on the west side by Graeme Douglas, 107 cm from north end. Constructed of large cobbles, with medium cobbles inside are small cobbles used as packing. Very jumbled and messy. No courses or flat faces.

basal depth:  
-120.5 cm

Graeme Douglas: Wall running  $110^\circ$  E of N. Length = 195 cm, width = 35.5 cm, height = 20 cm. Abuts Dave Smalley on the east end, and corners to the south with Greg Ginn on the west end. Constructed of medium-large cobbles with smaller cobbles both under and above, Semi-formal construction - straight line and little jumble, but no courses or flat surfaces.

Curran

basal depth:

east end = -136.5 cm  
west end = -135 cm

Charlie Harper; wall running  $108^\circ$  E of N. Length = 279 cm, width = 54 cm, ~~depth~~ height = 15 cm. Corners to the north with Dave Smalley on the east end. On the west end it is built over by the corner at Greg Ginn and Ron Reyes.

Constructed at a single line of very large cobbles, backed by a line of medium cobbles. Almost directly in the middle of the line is a huge cobble. Semiformal construction - one course, with flat faces to the south.

forms either a step or a terrace below and to the south of Graeme Douglas.

Greg Ginn; wall running  $21^\circ$  E of N. Length = 135 cm, width = 23 cm, height = 27.5 cm.

basal depth:

-129 cm

Corners to the west with Ron Reyes, on the south end and with Kira on the north end. Constructed of medium cobbles over small cobbles. Semi-formal, one course of medium cobbles over jumbled small ones. Flat faces to the east.

Forms eastern side of the Black Flag entrance feature.

Ron Reyes; Cut block step running  $109^\circ$  E of N. Length = 280 cm, width =

basal depth:

east end = -128 cm  
west end = -110 cm

27 cm, depth = 12 cm. Corners to the north with Greg Ginn on east side. On west side, Ron Reyes extends southward 60 cm to form a small out-jutting wall, and a ball court marker has been placed to the north of Ron to make a line back to Kira. This entire feature is cut block, with the blocks an average size of 25 cm x 45 cm. The ball court marker is slightly oval and measures a diameter of 35 cm. It is broken in half, but both halves are here. Forms first step of Black Flag entrance feature.

Kira; Cut block step running  $107^\circ$  E of N. Length = 298 cm, width = 77.5 cm

height = 34 cm. Corners to the south with Greg Ginn on the <sup>east end</sup> ~~south side~~, corners to the north with Greg Hetson on the west ~~end~~, corners to the south with Ron Reyes on the west end, is backed on the north side by Paul Weller.

Constructed of large cut stone blocks over top of medium/large cobbles with small cobbles packed in between and at the base. Cut blocks are the same size as those in Ron Reyes. Forms second step of Black Flag. Very formal construction, two courses high (one cobble, one cut block) clearly facing to the south.

Greg Hetson; wall running  $17^\circ$  E of N. Length = 230 cm, width = 65.5 cm,

height = 38 cm. Corners to the east with Kira on the south end. Is abutted on the west side by Johnny Thunders, 36 cm from north end, and by Lucky Lehrer, 158 cm from north end.

basal depth:

south end = -91 cm  
north end = -70.5 cm

datum

Greg Hetson is constructed of medium/large cobbles over small cobbles, semi-formal construction, no clear courses, no flat faces.

Gabby Hayes: Wall running  $18^\circ$  E of N. Length = 98 cm, width = 34 cm, height = 22.5 cm. Constructed of small/medium cobbles, nicely stacked, but without any courses or flat faces. Abuts Paul Weller on the south end, and Darby Crash on the north end. Built over top of the eastern edge of Chuck Dukowski.

Chuck Dukowski: Circular feature. Wall is 23 cm thick. Circle has an interior diameter of 89 cm. Only the western  $1/4$  of Chuck is visible, as Gabby Hayes, Paul Weller, and Darby Crash are all built over top of the rest of the feature. Of medium sized cobbles.

Johnny Thunders: short wall running  $108^\circ$  E of N. Length = 70 cm, width = 31.5 cm, height = 40 cm. Corners to the north with Wayne County on the west end, Abuts Greg Hetson on the east end. Constructed of medium and large cobbles with small cobble base. Somewhat jumbled, no courses, but flat faces to the south.

Wayne County: wall line running  $11^\circ$  E of N. Length = 319 cm, width = 37 cm, height = 17 cm. Corners to the east with Johnny Thunders on the south end. Very messy, ugly, jumbled construction. Of medium cobbles over small cobbles. No clear courses or flat faces.

Lucky Lehrer: wall running  $108^\circ$  E of N. Length = 220 cm, width = 34 cm, height = 45 cm. Abuts Kira on the east end, Zach de la Rocha on the west end. Floor feature Keith Morris runs along its southern face for 159 cm from west end. Formal construction of medium-large cobbles over smaller cobbles, arranged in two clear courses with flat faces to the north.

Zach de la Rocha: wall running  $9^\circ$  E of N. Length = 278.5 cm, width = 39 cm, height = 31.5 cm. Corners to the west with Brendan Canty. Is abutted on the east side by Lucky Lehrer, 95 cm from south end. Floor feature Keith Morris runs straight to the east from the south end, and runs along east face up to Lucky. Is built over Paul Weller, which disappears under Zach 167.5 cm from south end. Is abutted on the east by Joe Strawberry, 197.5 cm from south end. Slightly jumbled, informal construction. Large cobbles over smaller ones, no courses, no flat faces.

basal depth:  
-93 cm

basal depth:  
(best reg): -92 cm

basal depth:  
-74 cm

basal depth:  
south end = -72.5 cm  
north end = -59 cm

basal depth:  
-85.5 cm

basal depth:  
North end = -72 cm  
South end = -76.5 cm

datum

floor depth:  
- 77 cm

Keith Morris: Floor feature measuring 125 cm (E/W) x 95 cm (N/S) bordered on the west by Zach de la Rocha and on the north by Lucky Lehner. Constructed of large cobbles, three cobbles wide x @ 4-5 cobbles long.

basal depth:  
- 78.5 cm

Brenden Canty: Wall running 99° E of N. Length = 117 cm, width = 68 cm, height = 36 cm. Corners to the north with Zach on the east end, disappears into excavation wall on west. Slightly jumbled, composed of large cobbles with small cobble packing, no clear courses, may have flat faces to the north.

basal depth:  
- 69.5 cm

Joe Strawberry: Short wall running 96° E of N. Length = 85 cm, width = 21 cm, height = 24.5 cm. Abuts Zach on the west end, is built slightly overlapping the northern edge of Paul Weller. Very small, informal wall, constructed of medium cobbles, no courses or flat surfaces.

basal depth:  
east end = -78 cm  
west end = -90 cm

Paul Weller: Early construction, wall running 111° E of N. Length = 570 cm, width = 34 cm, height = 21 cm. Appears from under Zach's east side, slightly overlapped for 50 cm by Joe Strawberry. The line then runs underneath Greg Hetson to appear on the other side running directly parallel to and perfectly flush against the north side of Kira. Runs over top of the southern edge of Chuck Dukowski, and is abutted by Gabby Hayes 53 cm from eastern end. Western half (before going under Greg) is constructed of a single line of very large, flat-faced cobbles, with the faces to the south. To the east of Greg Hetson, the wall becomes two cobbles high, and the cobbles are not quite as large.

basal depth:  
south end = -69 cm  
north end = -57.25 cm

Nikki Garnett: Wall running 25° E of N. Length = 449 cm. Width cannot be taken. height = 33 cm. The eastern section of a wall that emerges slightly from the wall of excavation. I believe this wall is part of yet another structure. It is composed of large cobbles in a single course. A second course appears at points along the length. Flat faces to the east.

depth: -168 cm

Geza X: Circular feature, interior diameter = 59 cm. Formed by a circular wall of medium sized cobbles with small cobble packing. Wall is 26 cm wide, and 39 cm deep. (See notes P95-72-25)

depth: -173 cm

George Hurley: Lozenge-shaped feature. Abuts Geza X on its north side and Mike Watt on its west side and Bob Mould on its south side. Interior dimensions: 155 cm (E/W) x 75 cm (N/S). Formed by wall 32-41 cm thick, 51 cm deep at large and medium cobbles w/ small cobble packing. Contains Deadbolt burn feature (See Notes P95-72-29)

datum

depth:  
-170.5 cmBob Mould; circular feature. Abutts George Hurley and Mike Watt.

Formed by wall 40 cm thick, 37.5 cm high, of medium-large jumbled cobbles. Interior diameter = 88 cm.

depth:  
-159.5 cmG. G. Allen; small circular feature. Abutted by the east end of Derby crash on its northwest edge. Interior diameter = 36 cm. Formed by wall 26 cm thick, 35 cm high, of medium cobbles over small ones, somewhat more formal construction than George Hurley and Bob Mould, but not as nice as Geza X.Ed Hall; stair feature formed by Mike Watt, Lydie Lunch, and Bill Stephenson. Forms three steps just above and to the west of the four circular features, leading into the Epitaph room.Black Flag; entrance feature formed by Ron Reyes, Greg Ginn, and Kara, creating a formal entrance into the D.C. structure, perhaps to the entire complex. Leads up into the Homestead room.depth:  
-93.5 cmDog Nasty; burn feature located inside circular feature Chuck Dukowski in the Homestead room. (See Notes P95-72-43)depth:  
-59 cmNew Bomb Turks; burn feature extending from under the southeast corner ofPig Champion. ~~(See Notes)~~basal depth:  
-70 cmPig Champion; wall running  $20^\circ$  E of N. Length = 164 cm, width = 64 cm, height = 44 cm. Constructed of large cobbles over small cobbles, semi-formal, flat. Caves to the west.floor depth:  
-85 cmEpitaph; room formed by Bill Stephenson, Di Boon, Guy Picciotto, Rikk Agnew, Tony Adolescent, and Derby Crash. L-shaped room measuring 275 cm (N/S) x 192 cm (E/W, northern section of room), 100 cm (E/W, southern section of room).Before Guy was built, Epitaph may have been entered through a hallway formed between Lyle Presler and D. Boon. Epitaph contains the Lard shelf/bench feature. Formed by Derby Crash, Jeff Pezzicatti, Rikk Agnew, and Tony Adolescent, this bench measures 204 cm (N/S) x 77 cm (E/W) and takes up the south west corner of room.lard platform  
height = -62 cmfloor depth:  
-93.25 cmSST; large room formed by Lyle Presler, Jeff Pezzicatti, Derby Crash, and The Slayer Hippy. Interior dimensions: 219 cm (E/W) x 167 cm (N/S). This room contained burial #2 with the miniature poly chrome vessels (See Notes P95-72-52, P95-72-59)

## Final notes (cont'd 17)

datum:

floor depth  
-96 cm

Headhunter: room formed by Darby Crash, Dave Smalley, Gabby Hayes, and Graeme Douglas. Interior dimensions = 225 cm (E/W) x 163 cm (N/S). A doorway 56 cm wide is formed in the northeast corner of this room, where Dave Smalley steps short of Darby.

floor depth  
-83 cm

Homestead: room formed by Paul Weller, Greg Hetson, Darby Crash, and Gabby Hayes. Interior dimensions = 175 cm (E/W) x 100 cm (N/S). The Chuck Dukowski circular feature is here, also the Dag Nasty burn feature. A 55.5 cm wide doorway is formed in the north-western corner of this room between Darby's rest end and Greg Hetson's north end.

floor depth  
-68.5 cm

Frontier: room formed by Greg Hetson, Johnny Thunders, Wayne County, and Pig Champion. This room has no north wall - whether it was torn out or if it was built like this, I do not know. Interior dimensions = 265 cm (N/S) x 72 cm (E/W). A 63 cm wide doorway is formed in the east wall of this room by Greg and Pig Champion.

floor depth  
-77 cm

Dionysus: room formed by Greg Hetson, Luchy Lehrer, Johnny Thunders, Zach de la Rocha, and Joe Strawberry. Interior dimensions = 231 cm (E/W) x 71 cm (N/S). This room contained burial number three (See Notes) and Paul Weller runs through the center of the floor. A 93 cm wide doorway is formed in the north wall by Joe Strawberry and Johnny Thunders.

Lot Cards

- Lot 1 = surface collection  
 Lot 2 = Unit 1, 1-20 cm  
 Lot 3 = Unit 2, 1-10 cm  
 Lot 4 = Unit 1, 20-30 cm  
 Lot 5 = Unit 1, 30-40 cm  
 Lot 6 = Unit 1, 40-50 cm  
 Lot 7 = Unit 1, 50-60 cm  
 Lot 8 = Unit 1, 60-~~75~~ cm  
 Lot 9 = Unit 1, 65 cm, burn feature  
 Lot 10 = Unit 2, 10-20 cm  
 Lot 11 = Unit 2, 20-30 cm  
 Lot 12 = Unit 2, 30-40 cm  
 Lot 13 = Unit 2, 40-50 cm  
 Lot 14 = Unit 2, 50-60 cm  
 Lot 15 = Unit 2, 60-68 cm  
 Lot 16 = Unit 3, 0-15 cm  
 Lot 17 = Tumble from Unit 2 + 3  
 Lot 18 = Unit 4, 0-~~15~~ cm  
 Lot 19 = Unit 3, 15-20 cm  
 Lot 20 = Unit 20, 0-20 cm  
 Lot 21 = Unit 20, 20 cm +  
 Lot 22 = Unit 21, 0-5 All, 5-35 E.  $\frac{1}{3}$  of Unit  
 Lot 23 = Unit 22, 0-40 cm  
 Lot 24 = Unit 39, 0-20 cm  
 Lot 25 = Unit 23, 0-55 cm, E. 40 cm of Unit  
 Lot 26 = Unit ~~14~~, 0-20 cm  
 Lot 27 = Unit 14, 20-50 cm  
 Lot 28 = Unit 23, 0-~~45~~ cm, W. 60 cm of Unit  
 Lot 29 = Unit 23, 47 cm, living surface  
 Lot 30 = Unit 23, 47-55 cm, W. 60 cm of Unit  
 Lot 31 = Unit 13, 0-~~15~~ cm  
 Lot 32 = Unit 3, 20-50 cm  
 Lot 33 = Unit 13, 15-50 cm  
 Lot 34 = Unit 3, 50-70 cm  
 Lot 35 = Unit 4, 5-35 cm  
 Lot 36 = Unit 12, 0-20 cm  
 Lot 37 = Unit 4, 35 cm <sup>living surface</sup>  
 Lot 38 = Unit 12, 20-50 cm  
 Lot 39 = Unit 4, 35-60 cm  
 Lot 40 = Unit 11, 0-20 cm  
 Lot 41 = Unit 11, 20-50 cm  
 Lot 42 = Unit 5, 0-20 cm  
 Lot 43 = Unit 10, 0-20 cm  
 Lot 44 = Unit 10, 20-50 cm  
 Lot 45 = Unit 5, 20-40 cm  
 Lot 46 = Unit 9, 0-20 cm  
 Lot 47 = Unit 5, 40-60 cm  
 Lot 48 = Unit 6, 0-~~15~~ cm  
 Lot 49 = Unit 8, 0-20 cm  
 Lot 50 = Unit 7, 0-30 cm  
 Lot 51 = Unit 39, level 2, 20-40 cm  
 Lot 52 = Unit 39, Level 3, 40-50 cm  
 Lot 53 = Unit 7, level 2, 30-  
 Lot 54 = Unit 40, level 1, 0-20 cm  
 Lot 55 = N. & S. edges of E.B. Ray  
 Lot 56 = Unit 40, level 2, 20-40 cm  
 Lot 57 = Unit 59, level 1, 0-20 cm  
~~Lot 58 = Unit 11, level 1, 0-20 cm~~  
 Lot 58 = Unit 59, level 2, 20-65 cm  
 Lot 59 = Unit 41, level 1, 0-20 cm  
 Lot 60 = Unit 41, level 2, 20-50 cm  
 Lot 61 = Unit 41, 50-60 cm  
 Lot 62 = Unit 20, SW corner  
 40-60 cm  
 Lot 63 = Unit 60, 0-20 cm  
 Lot 64 = Unit 60, 20-40 cm

## Subop. 16E (contd.)

- Lot 65 = Unit 60, 40-60 cm  
 Lot 66 = Unit 60, tumble from above Str Actors  
 Lot 67 = 30cm Bulk between Unit 20 + Unit 1  
 Lot 68 = 30 cm Bulk between Unit 21 + Unit 2  
 Lot 69 = 30 cm Bulk between Unit 22 + Unit 3  
 Lot 70 = 30 cm Bulk between Unit 23 + Unit 4  
 Lot 71 = Unit 15, 0-60 cm

## Subop. 16P

- Lot 1 = Unit 10, 0-20 cm  
 Lot 2 = Unit 10, 20-40 cm  
 Lot 3 = Unit 20, 0-60 cm  
 Lot 4 = Unit 30, 0-20 cm  
 Lot 5 = Unit 30, 20-65 cm  
 east of Exene

- Lot 6 = Unit 40, 0-60 cm  
 Lot 7 = Unit 50, 0-20 cm  
 Lot 8 = Unit 50, 20-65 cm  
 Lot 9 = Unit 60, 0-65 cm  
 (east of Exene)

- Lot 10 = Unit 60, 65-70 cm  
 (east of Exene)  
 Lot 11 = Unit 60, 0-70 cm  
 (west & south of Exene)

- Lot 12 = Unit 70, 0-20 cm  
 Lot 13 = Unit 70, 20-70 cm  
 Lot 14 = Unit 80, 0-20 cm

- Lot 15 = Unit 80, 20-60 cm  
 Lot 16 = Unit 90, 0-20 cm

- Lot 17 = Unit 90, 20-40 cm

- Lot 18 = Unit 90,  
 40-70 cm  
 S. of Tesco Vee

- Lot 19 = Unit 90, 40-65 cm  
 W. of Alice Bag

- Lot 20 = Unit 90, 40-65 cm  
 E. of Alice & N. of Tesco

- Lot 21 = Unit 100, 0-20 cm

- Lot 22 = Unit 100, 20-65 cm  
 W. of Alice Bag (S. 1/2)

- Lot 23 = Unit 100, 20-65 cm  
 W. of Alice Bag (N. 1/2)

- Lot 24 = Unit 110, 0-20 cm

- Lot 25 = Unit 110, 20-65 cm  
 W. of Alice

- Lot 26 = Unit 120, 0-20 cm  
 Lot 27 = Unit 120, 20-65 cm  
 W. of Alice

- Lot 28 = Unit 130, 0-20 cm  
 Lot 29 = Unit 130, 20-65 cm  
 W. of Alice

- Lot 30 = Unit 140, 0-20 cm  
 Lot 31 = Unit 140, 20-65 cm  
 E. of Exene

- Lot 32 = Unit 140, 40-65 cm  
 E. of Exene

- Lot 33 = Unit 150, 0-20 cm  
 Lot 34 = Unit 150, 20-65 cm  
 W. of Alice Bag

- Lot 35 = Unit 160, 0-20 cm  
 Lot 36 = Unit 160, 20-65 cm  
 W. of Pat Bag

- Lot 37 = Unit 170, 0-20 cm

## Subop. 16P

- Lot 1 = Unit 1P, 0-20 cm

- Lot 2 = Unit 1P, 20-40 cm

- Lot 3 = Unit 2p, 0-20 cm

- Lot 4 = Unit 2p, 20-60 cm

- Lot 5 = Unit 3p, 0-20 cm

- Lot 6 = Unit 3p, 20-40 cm

- Lot 7 = Unit 3p, 40-55 cm

- Lot 8 = Inside of Geza X

- Lot 9 = Unit 1P, 40-60 cm

- Lot 10 = Unit 4p, 0-20 cm

- Lot 11 = Unit 4p, 20-60 cm

- Lot 12 = Unit 5p, 0-20 cm

- Lot 13 = Unit 5p, 20-60 cm

- Lot 14 = Unit 6p, 0-20 cm

- Lot 15 = Unit 6p, 20-60 cm

- Lot 16 = Unit 7p, 0-20 cm

- Lot 17 = Unit 7p, 20-40 cm

- Lot 18 = Unit 7p, 40-65 cm

- Lot 19 = Unit 7p, 65-70 cm

- Lot 20 = Inside of Geza X, 65-70 cm

- Lot 21 = Unit 8p, 0-20 cm

- Lot 22 = Unit 8p, 20-40 cm

- Lot 23 = Unit 9p, 0-20 cm

## Subop. 160 (cont'd)

- Lot 38 = Unit 170, 20-65cm w. of Pat Bag  
 Lot 39 = Unit 180, 0-20 cm  
 Lot 40 = Unit 180, 20-55cm, w. of Pat Bag  
 Lot 41 = Unit 190, 0-20 cm  
 Lot 42 = Unit 190, 20-55cm, w. of Pat Bag  
 Lot 43 = Unit 200, 0-20 cm  
 Lot 44 = Unit 200, 20-55cm  
 Lot 45 = Unit 210, 0-20 cm  
 Lot 46 = Unit 210, 20-55cm  
 Lot 47 = Unit 220, 0-20 cm  
 Lot 48 = Unit 220, 20-55cm  
 Lot 49 = Unit 230, 0-20 cm  
 Lot 50 = Unit 230, 20-55cm  
 Lot 51 = Unit 240, 0-20 cm  
 Lot 52 = Unit 250, 20-40 cm  
 Lot 53 = Unit 250, 20-40 cm  
 Lot 54 = Unit 250, 0-20 cm  
 Lot 55 = Unit 250, 20-55cm  
 Lot 56 = Unit 270, 0-20 cm  
 Lot 57 = Unit 280, 0-20 cm  
 Lot 58 = Unit 280, 20-45 cm  
 Lot 59 = Unit 290, 0-20 cm  
 Lot 60 = Unit 290, 20-45 cm  
 Lot 61 = Unit 300, 0-20 cm  
 Lot 62 = Unit 300, 20-45 cm  
 Lot 63 = Unit 310, 0-45 cm  
 Lot 64 = Unit 320, 0-50 cm  
 Lot 65 = Unit 330, 0-20 cm  
 Lot 66 = Unit 330, 20-40 cm  
 Lot 67 = Unit 340, 0-20 cm  
 Lot 68 = Unit 340, 20-45 cm  
 Lot 69 = Unit 350, 0-20 cm  
 Lot 70 = Unit 350, 20-45 cm  
 Lot 71 = Unit 370, 0-45 cm  
 Lot 72 = Unit 350, 0-20 cm  
 Lot 73 = Unit 350, 20-40 cm  
 Lot 74 = Unit 380, 0-20 cm  
 Lot 75 = Unit 390, 0-20 cm  
 Lot 76 = Unit 400<sup>+410</sup>, 0-20 cm  
 Lot 77 = Units 420 + 410, 20-45 cm  
 Lot 78 = Unit 420, 0-20 cm  
 Lot 79 = Unit 430, 0-20 cm  
 Lot 80 = Unit 440, 0-20 cm  
 Lot 81 = Unit 450, 0-20 cm  
 Lot 82 = Unit 450, 20-25 cm  
 Lot 83 = Unit 460, 0-20 cm  
 Lot 84 = Unit 470, 0-20 cm  
 Lot 85 = Unit 480, 0-20 cm  
 Lot 86 = Clearing rubble from above ~~between~~ <sup>between Blackie</sup>  
~~Hell in Unit 360, 340, 320 + King~~  
 Lot 87 = Units 41 + 420, 20-40 cm  
 between Blackie + King  
 Lot 88 = Unit 490, 0-20 cm  
 Lot 89 = Unit 500, 0-20 cm  
 Lot 90 = Unit 510, 0-20 cm  
 Lot 91 = Unit 520, 0-20 cm  
 Lot 92 = Unit 530, 0-20 cm  
 Lot 93 = Unit 540, 0-20 cm  
 Lot 94 = Unit 550, 0-20 cm  
 Lot 95 = Unit 480, 20-60 cm  
 Lot 96 = Units 490 + 500, 20-40 cm  
 Lot 97 = Units 490 + 500, 40-60 cm  
 Lot 98 = Unit 510, 20-50 cm  
 Lot 99 = Units 460 + 450, 20-50 cm  
 Lot 100 = Units 380 + 420, 20-30 cm  
 Lot 101 = Units 380 + 420, 30-50 cm  
 Lot 102 = Unit 510, clearing brick

# Subap 16p (cont'd)

- Lot 24 = Unit 9p, 20-40 cm
- Lot 25 = Unit 8p, 40-60 cm
- Lot 26 = Unit 10p, 0-20 cm
- Lot 27 = Unit 10p, 20-30 cm
- Lot 28 = Unit 10p, 30-40 cm
- Lot 29 = Unit 10p, 40-60 cm
- Lot 30 = Unit 11p, 0-20 cm
- ~~Lot 31 = Unit 11p, 20-40 cm~~
- Lot 31 = Unit 12p, 0-~~50~~ cm
- Lot 32 = Unit 13p, 0-60 cm
- Lot 33 = Unit 14p, 0-60 cm
- Lot 34 = Unit 15p, 0-60 cm
- Lot 35 = Unit 16p, 0-60 cm
- Lot 36 = Unit 17p, 0-20 cm
- Lot 37 = Unit 17p, 20-55 cm
- Lot 38 = Unit 18p, 0-~~20~~ cm
- Lot 39 = Unit 19p, 0-20 cm
- Lot 40 = Units 18p + 19p, 20-40 cm
- Lot 41 = Unit 20p, 0-20 cm
- Lot 42 = Unit 20p, 20-45 cm  
+ Unit 21p, 0-45 cm
- Lot 43 = Unit 22p, 0-40 cm
- Lot 44 = Unit 23p, 0-25 cm
- Lot 45 = Unit 23p, 25-40 cm
- Lot 46 = Unit 24p, 0-20 cm
- Lot 47 = Unit 24p, 20-40 cm
- Lot 48 = Unit 25p, 0-40 cm
- Lot 49 = Unit 26p, 0-50 cm, Unit 25p, 40-50 cm
- ~~Lot 50 = Unit 27p, 27-24p, 40-50 cm~~  
Unit 27p, 0-50 cm
- Lot 51 = Unit 28p, 0-~~50~~ cm
- Lot 52 = Unit 28p, 20-50 cm
- Lot 53 = Unit 29p, 0-~~50~~ cm

- Lot 54 = Unit 30p, 0-55 cm
- Lot 55 = Unit 31p, 0-55 cm
- Lot 56 = Unit 31p, clear tumble from Kira
- Lot 57 = Unit 32p, 0-20 cm
- Lot 58 = Unit 33p, 0-45 cm
- Lot 59 = Unit 22p, 40-50 cm
- Lot 60 = Unit 34p, 0-40 cm
- Lot 61 = Unit 35p, 0-40 cm
- Lot 62 = Unit 36p, 0-50 cm
- Lot 63 = Inside Gallery, Darby, Kira, + Pig  
40-50 cm
- Lot 64 = Unit 37p, clearing tumble to  
look for end of Kira.
- Lot 65 = Unit 37p, 0-60 cm
- Lot 66 = Unit 38p, 0-30 cm
- Lot 68 = Unit 38p, 30-50 cm
- Lot 69 = Unit 39p, 0-50 cm
- Lot 69 = Unit 40p, 0-50 cm
- Lot 70 = Unit 41p, 0-30 cm
- Lot 71 = Unit 42p, 0- cm
- Lot 72 = Unit 43p, 0-30 cm
- Lot 73 = Unit 44p, 0-30 cm
- Lot 74 = Unit 5p, w. 1/2 of Unit, 20-40 cm
- Lot 75 = Unit 41p, 30-45 cm
- Lot 76 = Unit 45p, 0-50 cm
- Lot 77 = Unit 46p, 0-40 cm
- Lot 78 = Unit 47p, 0-40 cm
- Lot 79 = Unit 48p, 0-50 cm
- Lot 80 = Unit 49p, 0-50 cm  
+ 22p
- Lot 81 = Unit 50p, 0-50 cm
- Lot 82 = Unit 51p, 0-50 cm
- Lot 83 = Unit 52p, 0-40 cm
- Lot 84 = Unit 53p, 0-40 cm
- Lot 85 = Unit 54p, 0-50 cm

Subop 160? (cont'd)~~Lot 1 = Units 380 + 420, 20-50 cm~~

Lot 103 = Units 520 + 530, 20-45 cm

Lot 104 = Units 540 + 550, 20-45 cm

Lot 105 = Units 430 + 440, ~~Level~~ 20-30 cm

Lot 106 = Units 430 + 440, 30-45 cm

Lot 107 = Units 300 + 350, 20-45 cm

Lot 108 = Unit 560, 0-65 cm

Lot 109 = Unit 570, 0 - cm

Subop 16p (cont'd)

Lot 86 = Unit 55p, 0-55 cm

Lot 87 = Unit 56p, 0-35 cm

Lot 88 = Unit 57p, 0-55 cm

Lot 89 = Unit 58p, 0-55 cm

Lot 90 = Unit 59p, 0-35 cm

Lot 91 = Unit 60p, 0-55 cm

Lot 92 = Unit 58p, burial

Lot 93 = Units 58p + 54p, 50-60 cm

Lot 94 = Unit 61p, 0-20 cm

Lot 95 = Unit 62p, 0-35 cm

Lot 96 = Unit 60p, 15-60 cm

Lot 97 = Unit 61p, 20-35 cm

Lot 98 = Unit 63p, 0-40 cm

Lot 99 = Unit 64p, 0-20 cm

Lot 100 = Unit 65p, 0-20 cm

Lot 101 = Unit 66p, 0-30 cm

Lot 102 = Unit 64p, 20-45 cm

Lot 103 = Unit 67p, 0-20 cm

Lot 104 = Unit 65p, 20-60 cm

Lot 105 = Unit 67p, 20-40 cm

Lot 106 = Unit 9p, 40-60 cm

Lot 107 = Unit 66p, 30-60 cm

Lot 108 = Unit 68p, 0-40 cm

Lot 109 = Unit 69p, 0-20 cm

Lot 110 = Unit 69p, 20-45 cm

Lot 111 = Unit 70p, 0-60 cm

Lot 112 = Unit 71p, 0-45 cm

Lot 113 = Unit 72p, 0-20 cm

Lot 114 = Unit 71p, clearing humble

Lot 115 = Unit 73p, 0-60 cm

Lot 116 = Unit 72p, 20-45 cm

Lot 117 = Unit 74p, 0-45 cm

Lot 118 = Burial in Unit 69p

Lot 119 = Unit 75p, 0-45 cm

Lot 120 = Unit 11p, 20-55 cm

Lot 121 = Unit 76p, 0-60 cm

Lot 122 = Unit 77p, 0-20 cm

Lot 123 = Unit 77p, 20-55 cm

Lot 124 = Unit 69p, between Lucy & Paul,  
45-60 cm

# SubOperation

~~Lot~~ 16K

P95-72-61

- Lot 1 = Unit 1K, 0-20 cm  
 Lot 2 = Unit 1K, 20-50 cm  
 Lot 3 = Unit 2K, 0-20 cm  
 Lot 4 = Unit 2K, 20-50 cm  
 Lot 5 = Unit 3K, 0-20 cm  
 Lot 6 = Unit 3K, 20-50 cm  
 Lot 7 = Unit 3K, 50-60 cm  
 Lot 8 = Unit 4K, 0-20 cm  
 Lot 9 = Unit 4K, 20-60 cm  
 Lot 10 = Unit 5K, 0-20 cm  
 Lot 11 = Unit 5K, 20-50 cm  
 Lot 12 = Unit 6K, 0-20 cm  
 Lot 13 = Unit 6K, 20-30 cm  
 Lot 14 = Unit 7K, 0-50 cm  
 Lot 15 = Unit 8K, 0-50 cm.  
 Lot 16 = 30 cm bulk between Units 1K+2K + main trench  
 Lot 17 = top dirt + tumble from platform (Unit 9K)  
 Lot 18 = space on platform between Poison Ivy and Fally James 30-50 cm  
 Lot 19 = surface of platform N. of Fally James.  
 Lot 20 = continuation of Lot 19  
 Lot 21 = narrow space between Poison Ivy + Fally James, 50-65 cm.  
 Lot 22 = Unit 10K, 0-20 cm  
 Lot 23 = Unit 10K, 20-55 cm  
 Lot 24 = Unit 11K, 0-20 cm  
 Lot 25 = Unit 11K, 20-55 cm  
 Lot 26 = Unit 12K, 0-55 cm  
 Lot 27 = Unit 12K, 50-60 cm  
 Lot 28 = Unit 13K, 0-20 cm  
 Lot 29 = Unit 13K, 20-55 cm  
 Lot 30 = Unit 14K, 0-20 cm  
 Lot 31 = Unit 14K, 20-55 cm  
 Lot 32 = western side of B71, Christlich  
 Lot 33 = Unit 15K, 0-20 cm  
 Lot 34 = Unit 15K, 20- cm  
 Lot 35 = Unit 16K, 0-20 cm  
 Lot 36 = Unit 16K, 20-50 cm