

1995

PVN-050-Etheridge-Field Notes-1995

Bevin Etheridge
Kenyon College

Follow this and additional works at: <https://digital.kenyon.edu/honduras>



Part of the Archaeological Anthropology Commons

Recommended Citation

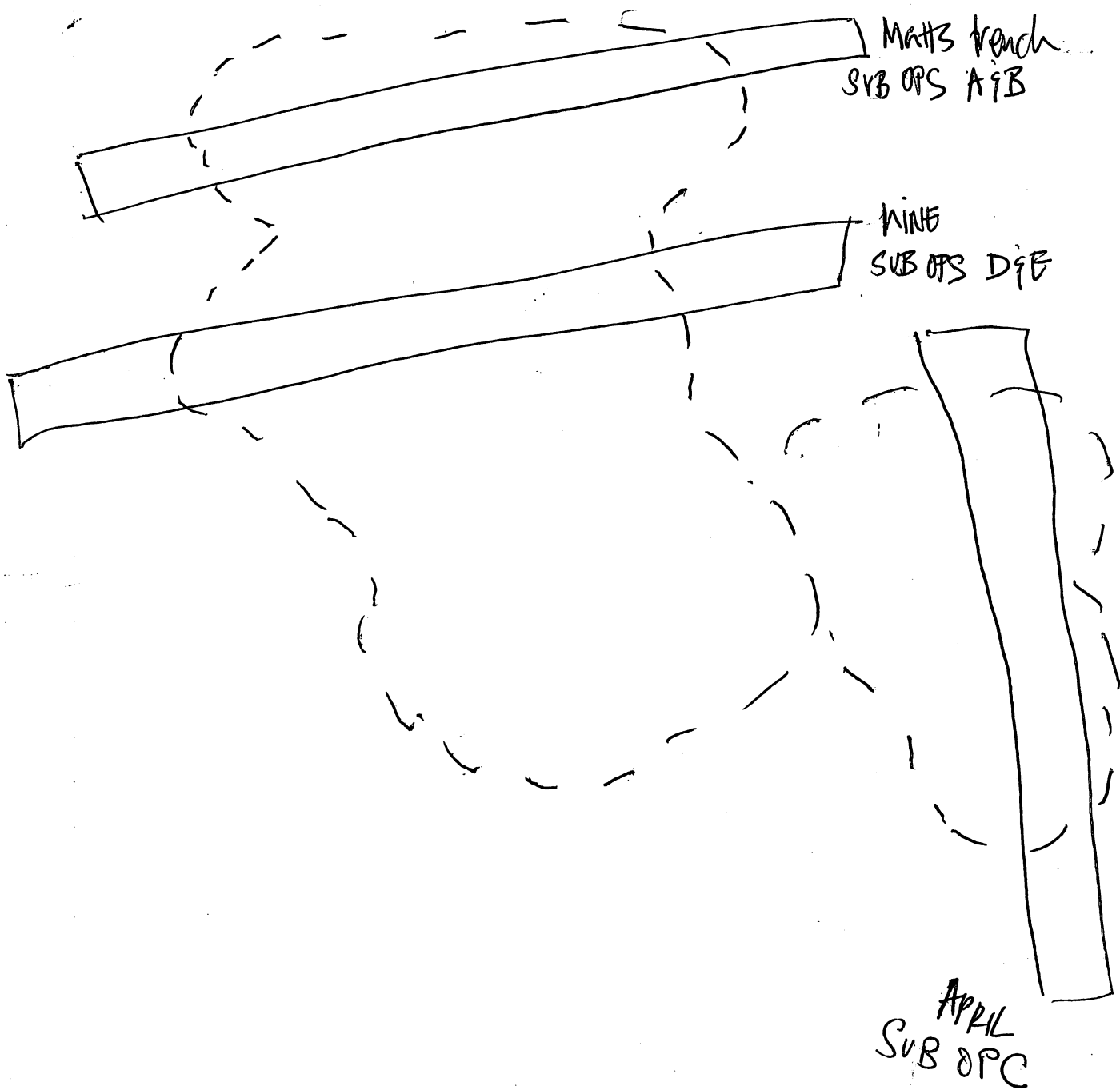
Etheridge, Bevin, "PVN-050-Etheridge-Field Notes-1995" (1995). *Four Valleys Archive*. Paper 7448.
<https://digital.kenyon.edu/honduras/7448>

This Field Notes is brought to you for free and open access by the Anthropology at Digital Kenyon: Research, Scholarship, and Creative Exchange. It has been accepted for inclusion in Four Valleys Archive by an authorized administrator of Digital Kenyon: Research, Scholarship, and Creative Exchange. For more information, please contact noltj@kenyon.edu.

PVN 95 PG. 1
01/30/95

DP 53
SUB OPS D & E laid out a 20m x 1m trench
oriented N-S. south end = OP D / north end = OPE

* Trench is set up along an apparent n-s wall seen in cobble line
on surface - Looks like it will abutt other stone walls perpendicularly.
Ca. 2 tree roots lie 7-8 m from the SWC of trench
outline of mounds:



PVN 95 01/30/95
OP 53

OP53D in south - 0-10 cm below NWC of the
LOT 1 0-1 m N of Sand of trench lot
bag(1) - sherds

OP53E in north - 0-10 cm b.g.s. @ SWC of lot
LOT 1 0-1 m S of N end of trench bag(1) - sherds

look @ b.r. - looks like
Kiln b. req. ue.

OP53D 10-20 cm below NWC of the lot.
LOT 2 bag(1) bajareque, sherds / will cont. 1/31 X
bag(2) 1/31/95 sherds / bajareque
OP53E 10-20 cm below SWC of lot
LOT 2 bag(1) sherds, obsidian will cont. 1/31

1/31/95

OP53E 20-30 cm below ~~SWC~~ SWC of lot
LOT 3 bag(1) sherds, obsidian, bajareque

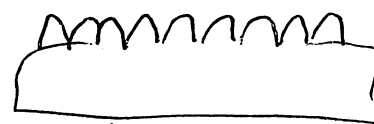
OP53D 20-30 cm below NWC of the lot.
LOT 3 bag(1) sherds, shell
a lot of rx - possibly tumble, will move north before removing

* OP53D 0-10 cm below NWC of the lot
LOT 4 location 1-2 m N of Sand of trench. rx @ surface here as well.
bag(1) sherds

OP53E 30-40 cm below SWC of lot
LOT 4 bag(1) sherds, bone, bajareque

Many 2-8 cm cobbles assoc. w/ b.r. construction coming out at all levels of E
Soil in E: lt. br. - gr. yell hue; light silty well-sorted
packed/clayey when wet, crumbly at touch if dry

PGS-50-3
1/31/95



OP 53

Unit B	
12	1
19	2
18	3
17	4
16	5
15	6
14	7
13	8
12	9
11	10
10	11
9	12
8	13
7	14
6	15
5	16
4	17
3	18
2	19
1	20

OP 53D-5 returned to 0-1 m N of S end of trench
taking rocks out that range from ca. 5 cm —
35 cm b. NWC sherds assoc. w/ them
will go in a bag (separate from 35-40 cm
coming down on more rx. - b6)
bag (1) sherds

OP 53E/05 40-50 cm. below SWC of lot.
loc. same sh coming down on same larger rx.
bag (1) sherds

OP 53D/06 loc. same 0-1 m N of S end of trench @ 50 cm. in a
35 cm - 55 cm. bgs @ NWC of lot pt. of trench
taking tumble out. ashly
bag (1) sherds - complete handle w/ incisions, obsidian, 2 beads

OP 53E/06 loc. same as E/05
50-70 cm. bgs @ SWC of lot - rx here.
bag (1) sherds, b. req. que

OP 53E/07 loc. 3-4 m S of N end of trench
0-15 cm b.g.s. / 20 cm in SEC
bag (1) sherds & b. req. que

OP 53E/08 loc. 9-10 m S of N end of trench.
0-20 cm. b.g.s.
bag (1) sherds, bones

OP 53
D

OP 53D/07 loc. same as 53D/01 55 cm. - 60 cm in SEC
bag (1) sherds & 65 in NEC

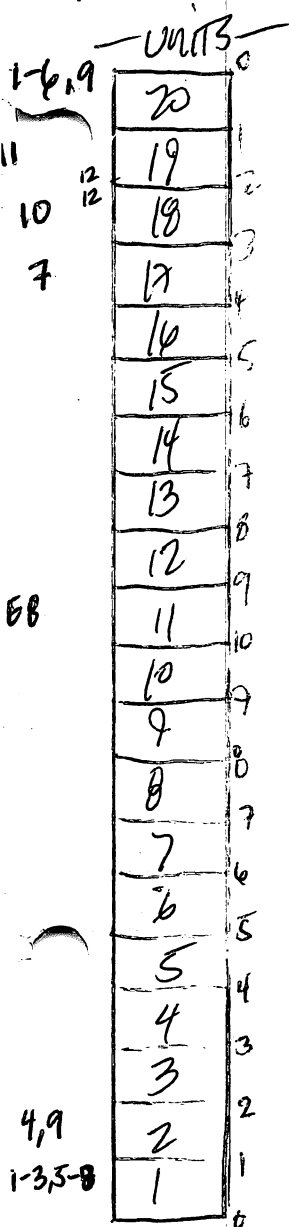
OP 53E/09 loc same as 53E/01 70 cm - 80 cm
bag (1) sherds, b. req. que

OP 53E/10 2-3 m S of N end 0-15 cm. bag (1) few sherds

N
↑ or E

P75-50-4

02/01/95



OPS3E/11

1-2 m S of the N end of trench
in. S. of E/01 0-10 cm bgs SWC
bag(1) sherds, shell

OPS3D/08

same loc. as 53D/01 65 cm bgs in NWC
a line of rx running E-W a single cobbles width.
in the far south of trench - a cobble stone
floor - with rx-line (E-W) separating it from
soft silty, ashy - lt brown soil in the north
60-70 cm bgs in SWC - lower than in N. - floor surface

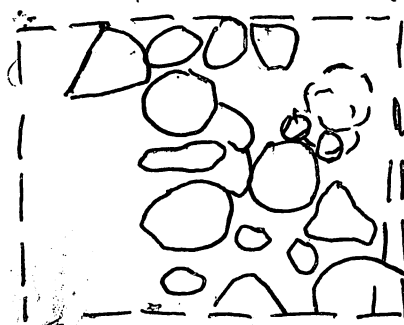
bag(1) sherds

OPS3E/12

1-2 m S of N end of trench. Below E/11, S
of E/02. 10-20 cm. bgs SWC & 2-3 m ^{15-20 cm bgs in SWC}

bag(1) sherds, bajanque, shell, fig. frag., red schist piece

in D its possible we've gone through the top 40 cm
of a collapsing wall - not sure. we have the bottom rx
that form the E-W line, different soil, the lt. ashy stuff N of



SEE graph ()
for a sketch to
scale.

it but no rx - rx in trench profiles though.
line of rx does sit on top of floor.

OPS3D/09 same loc. as D/04. bag. at ^{in SW} 5-10 cm ^{in NWC} of lot.
All rx - lt. soil same as in N end of lot D/08. -
will clean & take out the tumble. 10-30 in NWC
20 in SWC

2 bags: 1) sherds
2) sherds, tigers paw, obsidian
3) matele can perna.

Working on OPS3E/12 & OPS3D/09

DATUMS: (3 in all)

- 1- 9.85 m N of S end of trench / 1.06 m W of W trench wall
- 2- 5.35 m N of S end trench / 0.68 m W of W trench wall
- 3- 6.25 m S of N end trench / 1.55 m W of W trench wall

OPS3E/13 2 m S of N end. 20-30 cm logs in SWC of lot.
bag(1) sherds, obsidian, shell / whole censer

OPS3D/10 0-1 m N of S end. @ 60-65 → floor, excavating Northern half of meter quad. taking out the line of rx thought to be base of wall earlier b/c none seen in the w. trench profile & rx behind are not at all flat-lying.
bag(1) sherds

OPS3E/14 1-2 m S of N end. below E/13. 30-40 cm logs in SWC of lot.
bag(1): sherds, large obsidian, bone

OPS3D/11 Same loc. as D/09 bag @ 30-35 cm NWC & 20 cm SWC - D/09 & D/11 along S face of wall.
bag 1: sherds, b.r., obsid. Cer. iron bag 2: grindstone

Send OP D

	Floor - 1.22	(2)
at 0	SWC trench 55	(2)
meter 1	" 52	(2)
meter 2	" " 40	(2)
meter 3	" " 35	(2)
meter 4	" " 27	(2)
meter 5	" " 26	(2)

meter 6 SWC trench 15 (2)

string at 13 cm above datum 2

Dat. 1 (Dat 2 is 50 cm below Dat. 1.)

D- meter 7 40 cm
meter 8 34 cm
meter 9 30 cm
meter 10 23 cm
~~meter 11~~ ~~meter 12~~
west trench E9 (meter 11) 27 cm
E8 (m. 12) 27 cm
E7 (m. 13) 27 cm
E6 (m. 14) 30 cm

N
20
19
18
17
16
15
14
13
12
11
10
9
8
7
6
5
4
3
2

D/12

Dat. 3 (Dat. 3 is 20 cm below Dat. 1)
(string is 22 cm above Dat. 3)

E5 (meter 15) 50 cm
E4 (meter 16) 60 cm
E3 (meter 17) 72 cm
E2 (meter 18) 82 cm
E1 (meter 19) 84 cm
E0 (meter 20) 90 cm

base of excavation in N. end of trench - 1.6 m below Dat. 3

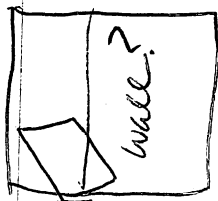
OPS3E/15

Same loc. as E/14 40-60 cm lgs SWC lot.
dirt's hard-med/brown bag(1) sherds, a little b.r.

OPS3D/12

2-3 m N of S trench (Unit 3)

0-10 cm lgs NWC trench, working on top
of wall (Jamón) - looks 70 cm. wide now. Will
work in Northern 30 cm. of Unit 3 inside



wall - i.e. structure to see if there is,
Indeed, a wall. ?? ~~bag(1)~~ 0-30 N of "Wall"
bag(1) sherds

02/02/98

OPS3D/13 1-2 m N of. Sand of trench
 @ 45cm - 60cm bgs W trench wall - taking
 out rx here found the Real wall - Teekaw.
 bag(1) : sherds, obsid. - 70cm. @ NWC.

OPS3E/16 same loc. as E/15 60 → level of Unit 20.
 bag(2) : shell, obsidian, sherds, - 80cm.
 The jaw bone of a RODENT. red rock.
 Unit 20 & 19 now at 80-level.

OPS3D/14 2-3m N of the Sand of trench.
 taking out rx 5-10 cm bg. NWC lot
 (Unit 3)
 bag: (1) mandible
 (2) sherds

OPS3E/17 S of B/16. Unit 18. 2-3m S of N
 trench wall 20-30 cm bgs SWC lot.
 bag (1) sherds,

OPS3D/15 3-4 m N of the South trench wall.
 N of D/14. Taking top off - 0-20cm or
 less in NWC of lot.

bag (1) sherds, bone, b.r

String 20cm above DAT 2.

Floor 130 know (no calc.)

1st step 86

2nd step 75

02/03

OPS3E/18 Unit 18. Below E/17. 30m - .4 SWC

lot. 2 bags

(1) sherds, b.r. (2) sherds, ^{steel} pigment stone, obsidian

~~OPS3D/14~~

continuing w/ D/15

02/03/95

Taking measurement. String .22 m above Dat 1.

Dat 2 .50

met 5 .6

6 .48

7 .38

8 .34

9 .27

10 .21

11 .26

12 .30

13 .30

14 .30

15 .40

16 .52

17 .60

18 .75

19 > 10 Dat 3

20

Dat 3 8

met 0 1.00

1 .92

2 .80

3 .68

4 .60

floor 1.6 @ 0.2 m from Strench end.
 Limon 1.24 @ 1.4 m from Strench end.
 next up 1.05 at 2m from Strench end.

OPS3D/16

2.5 - 4 m N of the Strench end
 Same as 15 - adding 3-2.5. @ 30 m -
 taking out rocks - looks like a line
 running NW-SE. (.58 m b. Dat 1)

OPS3E/19

Same as 18. Unit 18. At 40 m in
 SHC lot. - 60 m. Taking large x -
 tumble
 bag (1) sherds (.93 - 1.13 m bel. Dat 1)

OPS3E/20

Unit 18. Northern 50 m. .60 m
 Lys NWC - (~~1.25/1.30~~ - 1.5 m b. Dat 1)
 (~~1.13~~ 1.13 - 1.33 m bel. Dat 1)

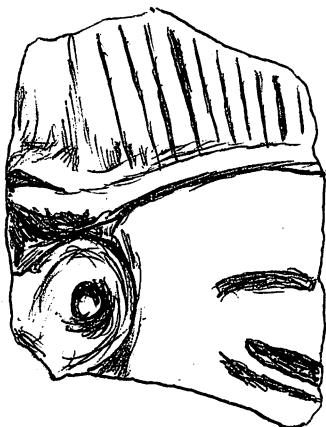
OPS3D/17

1.8 m N of Strench - 2.8. 30 m below NWC - .45 m
 (.76 - .91 m below Dat 1)

Actual
Size

PGS-50-9

Figurine Frag from E/20.



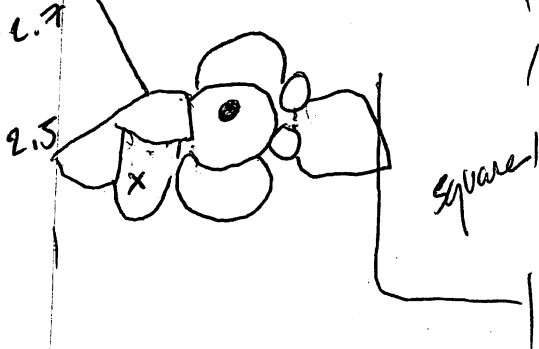
E/20 bag (1) sherds, fig. frag.
@ 18m N of Strench end
80m bags - taking it down
to look for the wall.

bag (2) shells, sherds, obsidian,
bone

(1.23 incl. Dat. 1)

@ .7m below SWC (@ 18m N) soil changes
from the hard to firm red brown silt into
a lighter, softer more yellow-brown.

D/17 - Soil is pretty hard -



• .20m by NWC trench
X .45m by NWC trench

believe both lines to be part of
2-3 course E-W wall. S-most
line tumbled south. But will
wait & see.

(convert to Dat. 1
later.)

bag (1) sherds

D/18

3-4m N of Strench end
Unit 4. Removing rx to
follow NW-SE line uncovered in Unit 30.

@ .20m by NWC - .30m by NWC

bag (1) sherds (.58m - .68m b. Dat. 1)

02/03/95

OPS3E/21 17-18m N of S end, i.e. Unit 18
(1.23m b. Dat 1) - 70m bgs in SW & NWC's. Starting at
softer soil down.

[obsidian, sherds ~~obsidian~~ bag (1)]

OPS3D/19

Unit 5 Dir. N of D/18

0-40cm bgs NWC lot bag (1)

(.38 - .78m b. Dat 1) 02/06/95

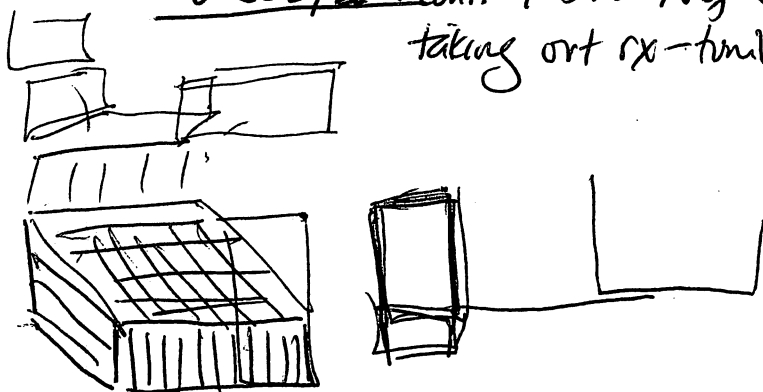
OPS3E/22 ~~continued~~

~~obsidian~~ (.58 - .78m b. Dat 1)

16-17m N of Strench end. 20m below SWC - 40m
bag: (1) sherds, cer. fig. frag., 3/4 face-juguen-tensara
bajareque

OPS3D/19 cont. 4-5m N of Strench end continued

taking out rx-tumble (1) Shards, shells
bag #2



OPS3E/23 17m - 17.4m N of Strench end 1 x 4m unit
taking out dirt & obvious tumble to see if lines exist
further south .40m - .90m bgs w threads
(1) sherds well.

(.78 - 1.28m. b. Dat. 1)

OPS3E/24 15-16m N of S end. Unit 16.

0-20cm bgs NWC.

(.03 - .3m b. Dat. 1) (1) sherds

OPS3D/20 5-6m N of Strench end. Unit 6.

0-40cm bgs, NWC. (.28 - .66m b. Dat 1) (.51 in SW) incl. Dat 1

9 - 25cm bgs SWC b/c its on other side of wall
sherds, obsidian, beads, bone

PAS-50-11

02/06/95

OPS3E/25 15-16 m N of Strench end. Unit 16
20-30 cm bgs NWC trench
no sherds - cleaning
(.5-.6 m below Dat 1)

OPS3D/21 0-40 cm bgs in NWC. Unit 7. 6-7 m N of
Strench end. (.16-.56 m bel. Dat 1)

OPS3E/26 (1) sherds, biquet, censer prong, lead cat tooth
14-15 m N of Strench end. Unit 15.
0-20 cm bgs NWC trench. (.18-.38 m. b. Dat 1)
finishing in 02/07 few sherds

- working through mass confusion in E - the N end of trench -
looks like a step with a 4-5 course basal summit
wall further south. cut through the tumbled/shrumping pt.
of the wall - this part is seen in section.

- in the south end of the trench we've got a n-s running
wall that we're following ext. many additions will draw
tomorrow

02/07/95

Will define & sketch in features and heights relative
to Datum

D-50-1

cont. w/ D/21 & E/26

OPS3D/22 UNIT 8. 7-8 m N of Strench 0-.20 m bgs in NWC
Clearing off top terr. debris. (.12-.32 bel. Dat. 1)
bag (1) sherds, biquet, pigment stone.

OPS3E/27 14-16 m N of S. Unit 16. 20-40 cm bgs NWC - taking
out tumbled N to see distinct line as of yet only seen
from aerial view. 1x1.2 m. unit. (1) sherds (.50-.7 m bel. Dat 1)

OP53D/23 - Unit 7. 4 m below NWC - 04/07
 .6 taking out smaller rx around
 walls - soil harder, red. (.56-.76 m b. Dat. 1)
 (1) sherds

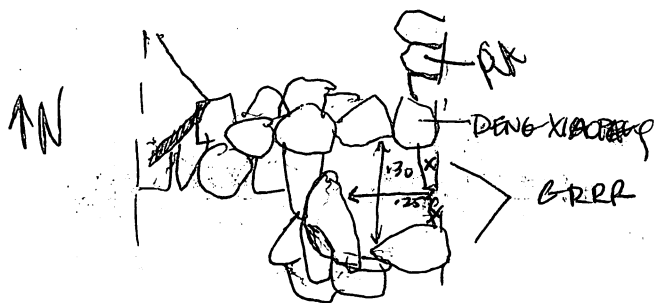
~~OP53D/23~~ - ~~Unit 7~~
OP53D/24 Unit 9 0-.10 m logs NWC inside summit
 (1) sherds, bayareque, obsidian
 (.05-.15 m bel. Dat. 1)

FEATURES: From S TO North.

- 1) HO CHI MINH - floor ^{as exposed} 0 m S to 1.10 m on W & 1.3 m on E side trench wall.
 actual cobbles stop @ .9. cobble floor .20 x .15 - .05 x .05 m
 size range. ca. 1.3 x 1 m a.e.
- 2) VACA - later addition - single (possible 2) course wall 0 - 1.3 m N on E side
 trench wall. cobbles ca. 30 x 20 cm set on end resting on
 another - leaning SW. At 0 m N of S, wall extends .15 m W
 out of E trench wall. @ 1.3 m N of S trench wall it extends .35
 m W of E trench wall. Oriented N20°E. 1.3 m long a.e. x
 .35 m wide a.e.
- 3) JAMON 4-5 course wall (at least 2 course small cobbles included)
 sloping southward. Appears @ 1.1 m N of STW - 1.5 m N of STW in the
 West T.W. It starts 1.3 m N of STW - 1.7 m N of STW in E.T.W.
 This 1 m long a.e., .40 m wide, and originally .40 m high -
 top layer toppled off. Oriented N88°E
4. GRR - 4-course L-shaped addition rests on Jamon and ^{is integrated with} Deng Xiaopeng
 further north. Outside of the structure. 1.8 m N of STW - 2.4 m N.
 From E trench W. extends .55 m W. This .55 m wide a.e. & .6 m wide N-S.

02/07

GRR's L-shape is due N & due W both. 2-25 m wide -
 5x10 m cobbles are in the center which is ca. .25 E-W & .3m N-S.



X's - pt. of Pa in the trench wall

5. Deng Xiaopeng - N of GRR - ~~entire~~ predates it - most likely - top cobbles well integrated - Runs ~~E-W~~ N80°W 2 courses wide

4-5 ^{courses} ~~courses~~ high originally (4 preserved). .20 m x .20 m -
 .05 - .10 m cobbles in range. Coming out of W.T.W. are 4 ^{pos.} originally stacked cut b/x (.4 x .4 m). This indicates an entrance w of W.T.W. - making Deng Xiaopeng the summit wall.

2.15 - 2.6 m N of STW 1 m long a.e., .45 m wide & .45 m high

6. RA - wall N10°W Predates Deng Xiaopeng - Seen in trench ~~E~~ wall S of Deng Xiao & N of GRR

2.2 m N of STW seen in W trench wall - Same N of Stretch wall -
 (Yasser Arafat is built around or integrated but most likely later construction)
 3 courses high - ca. 35 m high (cobbles ca. .15 x .20 m)
 2.8 m long a.e. .2 m wide.

7. Yasser Arafat 2 courses wide. Looks to predate Ra & Ka & coincide in time w/ Sillinaite. ~~2.2~~

N80°W .25 m high, .40 m wide & 1 m long a.e.
 3.6 m - 4 m N of STW.

8. KA N15°W - will call it sep. from RA but like RA - runs S & N of Yasser Arafat & II with RA. KA starts 2.8 m N of STW to ea. Same N of STW, ca. 30 m high, cobble .20 x .15 m, 2-3 courses high, 2.2 m long a.e. & .20 m wide.

795-50-14
02/07/95

9. Sillimanite - synchronic constrxn w/ Yasser Arafat -
Runs N-S One course wide - 2 courses high

.25 m high .20 x .30 m cobbles. Runs from 4m - 6.3 m
N of STW. 2.3 m x 1 m wide a. excavated.

→ Possibly 2 courses wide but 2nd course doesn't show until 6.3 m
N - 7.05 m N of STW.

Sillimanite is .4 m W of ETW @ 4 m N of STW; .48 m
W of ETW.

02/08/95

OP53E/28 Unit 14. 0-2 m b.g.s. SWC

Dat 1: (.08- .28 m below Dat. 1)

(1) bajareque, couple of sherds, bead

OP53D/25 Unit 9. .10 m b.g.s. - .2 m NWC.

(1) sherds, bajareque, obsidian - more lines - will follow N.

Dat 1: .15 m - .25 m below Dat 1

OP53D/26 Unit 10 0 m - .2 m b.g.s. Dat. 1.

(1) sherds, bajareque, bone

OP53E/29 14.7 - 15.2 m N of STW Wall. 1 x .5 m unit

@ .2 m b.g.s. -

or .38 m below Dat -

(1) pig-chalky stone, sherds

OP53D/27 Unit 9 ~~just below unit 8~~ .10 - .40 m 1 x ~~1.5~~² m unit

(.15 - .45 m below Dat. 1) Cleaning along a

N-S running wall in the East.

(1) sherds, bone @ .4 m b NWC @ 8 m N of STW (- 8.2)
Incised sherds & bones @ site.

OP53E/30 Unit 13 0 - .3 m b.g.s. NWC.

9 m .08 - .28 m below Dat. 1

(1) sherds! bags @ site. - not finished

(Unit 10 b.g.s.
Dat. 1)

P95-50-15

02/09/95

OPS3D/27 bag(2) bones ^{shards} (D95-50-2)

#

OPS3E/30 - finishing; ^{only to 2m bgs} censor drag, shards ~~for~~ ^{from unit 12} ~~hueso~~

OPS3E/31 - .35-~~40~~ bgs W side of trench @ 14-14.5 m N of Strench. (1) shards, b.r.
below Dat 1

to Chiminh 136

Vaca top 115 base 136

Jamón top existing 106 base 136 top of old 90

orr top 55 bott 100

Deng Xiaopeng foundat. top @ 2.25-2.4 m: 90 & 100.

top existing 70

sof Y. Arafat

North base of Deng. 60

top of Ra 65 base 80

" Ka 65

Kasser's top 65

base 80

top of Ra 45 N. of Y. Arafat

top of Ka 50 N. of Y. Arafat

top of Silliman 65 dir. No Y. Arafat

base of " in W. 75

top of Sill. @ 5-7 m N of S. 45

S. base of J. Valdez 72

top of S. foundation of Juan Valdez @ 7 m N of S 55

" " Juan Valdez 22

base of Juan Valdez in N 52

Fueyes top 17

" base a.e. - tubule top - 48

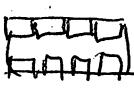
OPS3D/28

8.5-9.5 m N of S .15-.45 m bgs NWC taking out rx in
W pt. of trench across from FUEZO. - (1) shards piece of b.r.
[STAMP] ; obsidian

FEATURE DESCRIPTION continuation

P95-50-1b
02/09

10. JUAN VALDEZ - 7.7.75 m N of Sand trench
x abutted by ~~perimeter~~ Frijoles in ~~the~~ the S. @
0-.3 m W of E trench wall. Juan Valdez is .75 m wide
.5 m high and 1 m long as excavated. 7 courses high
3 courses wide. Commonly .2 x .2 m cobble also .1-.05 m used
in construction. Frijoles looks integrated more so than abutting.
Orientation dir. E-W

OPS3E/30 Coming on a floor - note its Primary deposit. Many
leech
 AA+1 Ed: "must have sneezed too hard."
-.2 m bgs

OPS3E/32 Unit 11 ~~15~~ floor (.3)

~~15~~ -.19-.24 m below Dat. / (1) Shards, bone

OPS3D/29

Starting to follow Jamón West. ~~1.4~~ 4 m W of
western trench wall of Unit 2 - 1.4 m W 1 x 1 m unit.
0-.20 m bgs .58-.78 m below Datum 1

Juan Valdez 11. Frijoles 1-2 courses wide. .15 x .25 average cobble size - S of J
4 courses high. @ 6.1 m N of STW ^{ground} .2 m out of trench wall. Valdez
9 @ 7 m N of STW it extends out. 35 m. Could be part of Sillimanite
Sill. in no South. looks to sit upon small cobble floor. integrated with
Juan Valdez? .2-.35 m wide a.e., .3 m high, 1 m long a.e.
→ Could be same as one feature - continuing on N of Juan Valdez - i.e.
Freeze - which extends from 7.7 (N of J. Valdez) to 9.45 m N of S
trench.

12. Freezo ⁹ ~~5~~ courses high .12 x .15 average cobble size 1-2 courses
wide as exposed. 2.75 m long

02/09

PG5-50-17

OP53D/29 (1) bag: sherds, pigment stone, 1/2 round stone

→ OP53E/33 Unit 11. below E/32 will follow back, taking out rx + Unit 12. (1) sherds, bayonet
 x OP53B/34 20-45 cm bgs
 (24-0.9 m b Det 1)

7.8-9.2 m N of SW 4-5 m bgs < (45-55 Det. 1)

B/W 8.3-9 m N of Stretch wall removing 2 cut b/x.

26x25 & 26x22. Also cleaning wall.

lifted then up - broken - looks like a square trough -

A drain - prob. recycled from a build. in center -
 found here w. of frego & S. of Doh upside down & broken -
 they do fit together. polychrome sherd on floor too.
 bag (1) sherds

02/10

working on OP53E/33 still.

→ OP53D/30 - Same as D/29 20 m bgs - 4
 .78 m b. Det. 1. Will call this Unit 22.
 (1) sherds, obsidian.

12. Frego cont. - 1.9 m long from 7.6-9.5 .12 m wide @ 7.6 & .4 m wide @
 9.5 - Dohs .12-14 m in width a.e., .55 m high as excavated.
 White Doh @ 9.5 - looks to predate Doh, Dir. ~~East~~ N-S.

13. Doh starts @ 9.35 in WTW & 9.55/9.6 in ETW - to 10.1 in W & 10.25 in ETW.
 ca. .6 m wide, .35 m high a.e., & 1 m long a.e. - 3 courses wide - cobbles
 ca. 2-15 m in size. 3-4 courses high Dir. E-W

14. OS - STONE 26x4 & 35x3 One course wide, one high @ 10.7 - 11.1 m N of SW.
 possibly extends as terrace to 16 m N of SW. Dohs 1.1 m wide, .25 m h. & 1 m long a.e.

15. Supercren sits above it 15.4-16 m N of SW. .6 m wide 5-.55 m high
 2-3 courses wide, 4 courses high. 25 x 15 cobble size range N80W

pgs 50-18
02/10

below Det 1.
Doh base(S) .48 (N) .48
by .08

~~Obsidian~~ Cash \$ - .48

Chia top .36 base .48

OS top .97
bott. 1.09
Superior ~~top~~ .92
top 50 prev. top .35
top 50(S) 55 top in(N)
top 34

Starting new lots in Unit 12 5 B¹⁴ 2m bgs -
OPS3E/38 .2m bgs - .35 m. bgs

(1) sherds, obsidian bifacial primary core-reduction

OPS3D/31 (in D/30 under covered what looks to be Jamon turning a c
Unit ~~21~~ Dir S of Unit 22. 1x1 m. 0-²~~3~~ m bgs.
(1) sherds, obsidian (.70-.9 b. Dat 1)

starting E
W X

OPS3E/36 following "OS" west 0.4 m - 1.4 m W of WTW
Directly W. of Unit 17. Will call it Unit 37.
(1) sherds, bajareque, bone ~~obsidian~~ 0-.2 m bgs
(.38-.58 m b. Dat 1)

OPS3D/32 Unit 21 .2-.4 m bgs. (1) sherds, b.r.s (9-1.1 m b. Dat 1)
x OPS3D/33 Unit 22 .2-.4 m bgs (1) sherds (.78-.98 m b. Dat 1)

OPS3E/37 Unit 37 .2-.4 m bgs (1) sherds, bajareque
(.58-.78 m b. Dat 1)

x OPS3E/38 - Unit ~~38~~ ³⁹ 0-.2 bgs (1) sherds, bajareque (.53-.73 m b. Dat 1)

x OPS3E/39 Unit 39 - taking out rx @ Glimanite ca. 30-50 cm bgs. (1) sherds.
(.56-.76 m b. Dat 1)

OPS3E/39 Unit 38 .2-.4 m bgs. (1) sherds, bajareque, obsidian car. fig
(.73-.93 m b. Dat 1)

12/14

OPS3D/35 Unit 23 0-.2 m bgs above Jamón's N-S counterpart

OPS3E/40 Unit 30 .4-.6 m bgs @ .4 soil is ~~red~~ hd. to travel, bonianque present. (1) shreds, b.v.

Feature: POH 9.4- 10.1 m N of STW .7 m wide .5 m high.
3-4 courses wide, av. cobble size .15 x .2 m, .4 courses high
POH either ~~abuts~~ abuts fveg or is integrated with it.

Feature: NW WAY N of Doh an addition comes out of the WTW, 3 m & extends 16 m N of Doh. It abuts Doh. 1.5 m high off of the tentative floor surface. 10.1 m - 10.7 m N of STW

Drawing section of Esobop. Datum used is .12 m below Dat-3 (string of Dat-3 is .2 m above Dat-3)

OPS3D/36 Unit 23 .2-.4 m bgs. Following corner of Jamón still.

(1) shreds, obsidian

(2) shreds

OPS3E/41 - Unit 37. .4-.6 m looking for OS.

OPS3D/37 - Unit 21 .40- m bgs Mainly taking rx out around a possible N-S line & better defining the corner of Jamón.

OPS3E/42 - Unit 30 .06- looking for OS in all the wrong places.

4/5/14

0623E/132 Unit 23 0-5 m pdz above junction N-2 counterpart

0623E/140 Unit 30 4-10 m pdz (a) 4 cor is 100% N-2
N-2 cor is 100% N-2

Looking down N of D-1 10.1 m N of 21W. 7 m wide. 12 m high.
3-4 corers wide, on corer 200. 12 x 5 m. 4 corers N. 21
D-1 either 100% N-2 or is interbedded with it.

Looking down N of D-1 on addition corner out of the NW. 3 m extension. 6 m
N of D-1 10.1 m N of 21W. 12 m high off of the horizontal floor
2 corers. 10.1 m - 10.5 m N of 21W

Diamond section of 21W. D-1 used is 15 m below D-1 2 (starting at D-1 3)

0623E/130 Unit 23 5-4 m pdz. Following corner of D-1 on still
(1) corers, 100% N-2
(2) corers

0623E/141 Unit 24 4-10 m looking for 2

4-10 m looking for 2 in all the way down
N-2 line is 100% N-2. The corner of D-1 is 100% N-2.

0623E/145 Unit 25 0-10 m looking for 2 in all the way down

295-50-19

02/14

OP53D/35 Unit 23 (.46-.66 m b. Dat 1)
0-.2 m bgs. Above Jamón N-S counterpart.

OP53E/40 Unit 38 .4-.6 m bgs @ .4 m soil is red, hard to travel

(1) sherds, bique (1.93-1.13 m b. Dat 1)

Feature: Doh 9.4-10.1 m N of STW. .7 m wide, .45 m high 3-4 courses wide, average cobble size .15 x .2 m 4 courses high. Doh either abuts FV500 or is integrated with it.

: ~~My way~~ ^{Cha} N. of Doh an addition comes out of the WTW .3 m & extends .6 m N of Doh. It abuts Doh. 15 m high off the tentative floor surface. @ 10.1-10.7 m N of STW.

Drawing section of E Subop. Datum used is .12 m below Dat 3 - ~~the~~ (with string of Dat. 3 @ .2 m above D3) - thus Datum for ssn is .08 m higher than 3.

OP53D/36 Unit 23 .2-.4 m bgs Following corner of Jamón still.

(1) sherds, obsidian (.66-.86 m below Dat 1)

(2) sherds

OP53E/41 Unit 37 .4-.6 m looking for OS. (1) sherds
(.78-.98 m b. Dat. 1)

OP53D/37 Unit 21 .4 (1.1-1.3 m b. Dat 1) .6 m bgs Mainly taking rx out around a possible N-S line & better defining the corner of Jamón.
(1) sherds

02/15/95

OP53E/42 Unit 38 .6-.8 m bgs looking for OS in all the wrong places
(1.13-1.33 m b. Dat 1)

(2) sherds, bique, obsidian, matute fragment

OP53D/38 Unit 23 .4-.6 m bgs Taking out crazy rx to see some LINES^{oo}.
(1) sherds, obsidian ~~bone~~ .86-1.06 m b. Dat 1

OP53E/43 Unit 36 0-.2 m bgs. (.3-.5 m b. Dat. 1)
(1) sherds

FEATURE LIST References see D-50-1

Ho Chi Minh Unit 1, pg. 12, 15

Cao Mein Unit 38 pg. 21

Vaca Unit 1, pg. 12, 15Janon Unit 2, pg. 12, 15Grrr Unit 2, pg. 13, 15Deng Xiaoping Unit 3, pg. 13, 15Yasser Arafat Unit 4, pg. 13, 15Sillimanite Unit 5 & 6, pg. 14, 15✓ Frijoles Unit 7, ^{pg.} 16, 21✓ Juan Valdez Unit 8, ^{pg.} 15, 16✓ Fuego Units 8-10, ^{pgs.} 15, 16, 17✓ Doh Units 9-10, ^{pg.} 17, 18D. ✓ ^{Cha} ~~Nguyen~~ - Unit 10, pg. 18, 20✓ Rice AND Bean - Unit 14✓ Stick Jim Up Units 15 & 16✓ SuperCien - Unit 16, pg. 17, 18✓ DS - Unit 17 & 18, pg. 17, 18✓ Ra - Units 3, 4, pg. 13, 15✓ Ka - Unit 5, pg. 13, 15D. ✓ Elder Ferris Unit 22, pg. 21D. ✓ Cash Money Units 12-14, pg. 18, 20

Feature - Cha abuts Doh & sits on cash money. from 10.1 - 10.65 m N of STW extends .25 m out of WTW & .65 N from Doh in the south 2 courses high, .55 m ~~wide~~ long a.e., 1 course wide, 15 x 12 m av. cobble size.

- 11 - CASH \$ MONEY - disheveled instead confused uprooted incongruous delicacy of past living surfaces, cash money's cobbles range in size .3 x .3 m → .5 x .5 m but most often the av. size is once again that oh so mundane choice, 15 x 15 m. Doh is on cash \$ (& Cha) in the South - Rice & Bean in the North. 10.1 - 13.3 m N of STW 3.2 m long, 1 m. wide a.e. @ 48 m b. Det. 1

top of Elder Ferris 1m @ top b. Dat. 1

top of EW wall running N of Elder Ferris 1.85 m @ top b. Dat. 1

top of NS wall in Unit 38 1m below Dat 1 will call Ciao Mein

base of excavation here is 1.2 m bgs.

top of Pripiles .52 m b. Dat. 1

base " " .7 m b. Dat. 1

OP53D/39 Unit 21 taking out tumbled - defining line of Janan more
(1.1-1.3 m b. Dat. 1) (1) sherds, bajareque
4-6 m bgs

OP53E/44 Unit 36 .2-.4 m bgs (1) Shards, mottle
(.5-.7 m b. Dat. 1)

CIAO MEIN 3 1/2 rx long so far coming out of WTW in Unit 38. Runs N-S
1 course wide as excavated, 1 course high

cobble size .4 x .3 average extends .25 m out of WTW & is 1 m long
a.e. large piece of bajareque to the east of it. - soil very
hard to travel here. Also .5 x .5 m boulders sitting above Ciao
mein directly south in Unit 37. N18W orientation

Elder Ferris starts @ .90 m N from STW (in Unit 21). It is .45 m wide, .5 m
high. 2 courses wide & 4 courses high. av. cobble size is
.15 x .2 - smaller .5 x .5 m cobbles also used in constrn.
Oriented N15W. Looks to be built @ same time & integrated
with Janan. 2.1 m long a.e.

Deng Xiaoping looks like its in Unit 23 joining w/ Elder Ferris &
the mormons as well; now this folks, is a development and
definitely a major advancement not only for the church
of Jesus Christ & the latter-day saints but for Elder Ferris
& his gradual attainment of recognition for sacrilegious activity
in the eyes of his church and in those of his God &
for China.

P9550-22

- OP53E/45 Unit 35. W of Unit 16, 4 m west - 1.4 of WTW*
~~(.18-.58 m b. Dat. 1)~~ 0-.4 m bgs. (1) sherds
OP53D/40 Dir. W. of Unit 23. Will call it Unit 43
See D-50-1. 0-.2 m bgs (~~0.4-1.6 m b. Dat. 1~~)
(1) sherds

OPS continuing on 1/16/95

Today - finish sxu, soils descriptions, calculate bgs related to Dat 1,
lot cards for yest. & today. Update D-50-1 w/ newly uncovered
features.

- OP53E/46 B/W 35-38 ~~38~~ 15-18. Taking out balk to see what's
Unit ~~38~~ & ~~38~~. up w/ 'OS' does it continue or merely fade away into
an effervescent fizz of nothingness? Ex. 4 m unit.
0-.4 m bgs ea. .3-.7 (1) sherds

- OP53D/41 below D/40. Unit 43 0.2-.4 m bgs. Mainly taking rx. out.
(2) sherds, some bajareque (.76-.96 m b. Dat. 1)

SOILS I: top humus reddish - 5YR var. chrom.
brown 5/4 using munsell col. chart.
sandy silt, clayey when wet.

II below I. silty sand 5YR 5/6 yellowish red, harder to travel

III below II lt. ash, soft to travel, silty, well sorted
light reddish brown 5YR 6/4

Afternoon ~~☺~~ coming after me. Lots are still progressing. Will enter the
lezards tonight and have everything done. To karate or to not karate -
that is the QUESTION?

02/17/94

still taking rx out @ Unit 43 .2-.4 m bgs - i.e. OP53D/41 - & OP53E/46

02/17

OP53D/41 - still wking. out from days gone by. bag#(3) sherds

More features ahead! will define them towards the end o' the day
when we can see them -
named Hasselhoff, Soul Patch & Mack Daddy - all in the northwest pt.
of trench.

OP53E/46: bag #2 sherds, obsidian

Below Dat. 1

Hasselhoff top 1.60 m
bottom

Mack Daddy top .35 m b. Dat. 1 @ 15.1 m
bottom .45 m @ 14.3

Soul Patch top 1 m
base 1.18

Blair Carris top, 1 m

OP53D/42 3 x .4 m unit. 0-3 m N of STW & 0-.4 m W of
WTW → i.e. b/w Units 1-3 & 21-23 0-.2 m bgs.

OP53E/47. Taking bulk down from .4 m bgs
b/w Unit 18 & 38. .4 x 1 m. unit.

Features

Hasselhoff - 1-2 course high wall a.e. sits atop terrace of ds - possibly
meets up w/ Supercien - although Supercien is constructed of smaller cobbles
falling apart. Cobbles .4 x .2 - .3 x .3 av. size. Width .6 m - containing
small cobbles (keras) E of it. drainage .3 m wide. Oriented N30°E

Mack Daddy rests at ~~the~~ level of Hasselhoff - is 2 courses high .15 x .2 m
cobbles w/ .05 x .05 m cobbles forming lower course - 1 course wide & ends at
Supercien w/ Hasselhoff

Soul Patch is a constrxn of 3 stones as excavated running under Hasselhoff
1 course high .4 x .3 m cobbles, these b/w terrace here. N10°W.

02/17 P95-50-24

Continuing on. let's see, notes to matt to avoid mass confusion.

SUBOPD is everywhere 0-10 m N of Southern Trench Wall (STW)
SUBOPE is all that is past 10 - i.e. 10-20 m N of STW.

My lot tags are orange. Lot cards are entered up through the 16th of Febrero. My seat can be dangerous when sat upon at the wrong angle. Some of my walls are a figment of my imagination. Next wall must be HACKING DOG if not found today. After that discretion may be used. There are no artifacts in this mound and I still don't know my structure number.

All features are described to date. Datum 1 & 3 are equivalent - All measurements I've taken for excavation are from NWC of lot - The drawing D95-50-1 or 2 has the ground surface levels of the units relative to Datum 1.

OP53D/42: 121 bags #1. sherds, b.r., bone

#2. sherds, ceramic basal passages.

OP53E/47: 2 bags #1 sherds, obsidian, bone, carbon @, 5m bags

#2 sherds, obs., basaltique

OP53E/48 one bag of sherds, baja
meter ~~to~~ 56.5 - 57.5

0-20 cmss
sherds

OP53E/49 meter 56.5 - 57.5 20-40 cmss

sherds, baja
0-40 cmss

2/21/95 OP53E/50 meter 56.5 - 58.5 2 bags sherds, baja

1/2 day rained out

2/22/95

OP53E 51 meter 76.5 - 77.5 0-20 cmss
sherds, obs, baja, ground
stone
"weight"

2/22/95 OPEBE

(50) Bevin's
P95-56-25

53E lot 52 meter# 75.5 - 76.5 0-20 cubs
sherds, baja

2/23/95

53E lot 53 meter# 54.5 - 55.5 0-20 cubs

53E lot 54 meter# 53.5 - 54.5 0-20 cubs
sherds, baja

2/24/95

53E lot 55 meter# 53 - 53.5 0-20 cubs
sherds, obs

53E lot 56 meter# 73
nothing
0-20 cubs
sherds

2/27/95

53E lot 57 meter# 72 0-20 cubs

53E lot 58 meter# 52 sherds, baja.

0-20 cubs
sherds, baja, obs, gs.

2/28/95

53E lot 59 meter# 74. - 75.5 0-20 cubs

53E lot 60 meter# 32

sherds, obs
0-20 cubs

53E lot 61 meter# 33

sherds, baja
0-20 cubs

53E lot 62 meter# 34

sherds, baja, obs, matate
0-20 cubs

53E lot 63 meter# 31

sherds, baja, maw
0-20 cubs

53E lot 64 meter# 51

sherds, obs, shell
0-20 cubs

53E lot 65 meter# 28

sherds, gs.
0-20 cubs
sherds, baja obs

3/2/95

3/6/95

53E Lot 66 meter # 29

53E ^{back beater} Lot 67 meter # 25 (Polychrome) 2 bags of sherds, obs, ^{bone} baja
0-20 cmbs

53E Lot 68 meter # 24

53E Lot 69 meter # 29

burial - cranium, polychrome / sherds, baja, obs
upside down bowl (3/4 - maybe)

0-20 cmbs
sherds, baja, matate
20-40 cmbs

3/7/95 53E Lot 70 meter # ~~71~~ 71

53E Lot 71 meter # 31 & 51

head (bone?) sherds, baja, obs, cs.

3/8/95 53E Lot 72 meter # 51 & 31

cleaning walls
3/9/95 53E Lot 73 meter # 71

53E Lot 74 meter # 50

53E Lot 75 meter # 30 & 10

cleaning walls

Depths of burial: datum set 20 cm above datum 1

obsidian (top) 70 cm below line level

long bone (top) 72 cm "

part of earflare (top) 70.5 cm "

cranium (top) 62 cm "

bowl (top) 69.5 cm "

base of excavation 73 cm "

(50)
P95-56-26

0-20 cmbs

2 bags of sherds, obs, baja

0-20 cmbs

sherds, baja

0-20 cmbs

sherds, baja, matate

20-40 cmbs

sherds, baja, obs

0-20 cmbs

sherds, baja, matate

20-40 cmbs

sherds, baja, obs, cs.

40-80 cmbs

sherds, baja, obs

40-80 cmbs

sherds

0-20 cmbs

sherds, baja, obs

0-50 cmbs

sherds, baja, obs, skull

3/10/95

53 E Lot 76 meter # 70

P95-50-27

0-30 cm

53E Lot 77

2 bags
meter # 71

sherds, baja, obs

0-30 cm

53E Lot 78

meter # 29

sherds, baja
62 cm below

datum 1

Ancestor
worship or burial(?)

cranium, ash filled, upturned
bowl, obsidian, lots of pottery above,
below, and at the same level, and a "plug"-
a part of an earflare, bajareque

This particular burial that was excavated was strange because it was
located ^{near} ~~right~~ on the surface. There was a few peaces of bone found
below the skull region, but there wasn't a full body located. The
great amount of pottery found around the skull was also very odd
and I was surprised to see only one peace of obsidian.

53E Lot 79

meter # 76 to 76.5

20 to 40 cm below

Empty Lot

53E Lot 80

meter # ~~48~~ 49

0-10 cm

53E Lot 81

meter # 74

sherds

0-20 cm

53E Lot 82

meter # 91.5 to 92

obsidian, sherds, baja

10-20 cm

53E Lot 83

meter # 76

sherds, ground stone,
10-20 cm

53E Lot 84

meter # 48

sherds, baja

0-10 cm

53E Lot 85

meter # 75

sherds, obsidian

10-20 cm

53E Lot 86

meter # 93

sherds, baja

10-20 cm

Blade Obsidian

3/14/95			
53E	Lot 87	meter # 93	20-40cm sherds, baja
53E	Lot 88	meter # 69	0-40cm sherds, baja
53E	Lot 89	meter # 54	20-30cm
		(cleaning the small section of the wall)	sherds
53E	Lot 90	meter # 55	20-30cm
		(cleaning out wall to better define it)	sherds
53E	Lot 91	meter # 56.5 to 56	20-50cm
		(cleaning wall)	sherds
53E	Lot 92	meter # 56	20-40cm sherds
53E	Lot 93	meter # 73	30-40cm baja, sherds
3/15/95			
53E	Lot 94	meter # 56.5 to 56	50-70cm baja, sherds
53E	Lot 95	meter # 94	0-20cm bone, baja, sherds
53E	Lot 96	meter # 94	20-40cm baja, obsidian, sherds,
53E	Lot 97	meter # 56	40-50cm sherds
53E	Lot 98	meter # 90	0-50cm sherds, baja
53E	Lot 99	meter # 47	0-50cm sherds, baja, artstone
53K	Lot 01	meter # 67	0-20cm sherds
53K	Lot 02	meter # 55	30-40 baja, sherds, mono, obsidian
53K	Lot 03	meter # 67	20-40cm sherds, baja

3/15/95

53k

Lot 04

meter # 89

0-40cmbs

sherds

53k

Lot 05

meter # 26

0-40cmbs

sherds, baja

53k

Lot 06

meter # 46

0-20cmbs

sherds, baja

53k

Lot 07

meter # 68

0-20cmbs

obsidian, bone, sherds, baja,

53k

Lot 08

meter # 45

0-20cmbs

sherds, baja

53k

Lot 09

meter # 88

0-20cmbs

sherds, baja

53k

Lot 10

meter # 66

0-20cmbs

obsidian, sherds

53k

Lot 11

meter # 67

0-20cmbs

baja, sherds

53k

Lot 12

meter 110-110.5

0-20cmbs

sherds

53k

Lot 13

meter # 192

0-30cmbs

3/16/95 - 3/17/95

53k

Lot 14

meter # 193

0-30cmbs

donut, sherds

53k

Lot 15

meter # 110

0-20cmbs

sherds

53k

Lot 16

meter # 87

0-20cmbs

sherds

53k

Lot 17

meter # 65

0-20cmbs

sherds, baja

53k

Lot 18

meter # 25

20-40cm

sherds, baja

53k

Lot 19

meter # 88

20-40cmbs

sherds

3/17/95

53k Lot 20 meter 109

0-20cmbs
sherds

53k Lot 21 meter #46

20-40cmbs
sherds

53k Lot 22 meter #194

0-30cmbs
sherds

53k Lot 23 meter #190

0-40cmbs
sherds, baja

* 53k Lot 24 meter #10888

empty lot
0-10 cmbs

53k Lot 25 meter #195

0-10 cmbs
empty lot

53k Lot 26 meter #86

0-20cmbs
sherds

3/24/95

53K Lot 27 meter #88

eastern half of 109.5-113m
0-40 cmbs

cleaning stairs 1x1.5m, southern half of 89

53K Lot 28 meter #213

sherds, baja, obs, 2 matate frags
0-40 cmbs
sherds, obs, matate

53K Lot 29 meter #196

0-40 cmbs

1x1m - northern 1/2 of 96 - southern 1/2 of 97

53K Lot 30 meter #192

sherds, baja, obs
30-50 cmbs

cleaning in between walls

53K Lot 31 meter #187-188.5

sherds, baja
0-40 cmbs

53K Lot 32 meter #73-74

sherds, baja, obs
50-70 cmbs
sherds, obs, bone

4/20/95 53K Lot 33 meter #21

cleaning wall (Hamon)

4/21/95 53K Lot 34 meter #42

20-60 cmbs
sherds, baja, obs
0-60 cmbs
sherds, baja, obs, CS-147

4.24.95

705-50-31

53K Lot 35 meter# X
unproven material found moving backdirt piles
ax head, stamp frags, ocarina frag.

53K Lot 36 meter# ~~191.5-192.5~~ 191.5-192.5 0-40 cubs
sherds

53K Lot 37 meter# ~~81.5-82~~ 81.5-82 0-50 cubs

sherds, obs, matate, dent

53K Lot 38 meter# western 1/2 of 87, 88, eastern 1/2 of 107, 108
between 0-50 cubs
sherds, obs, baja, mano, matate

53K Lot 39 meter# 47, 48, 67, 69 10-40 cubs

53K Lot 40 meter# 191.5-192.5
sherds, obs
50-60 cubs

53K Lot 41 meter# 86
sherds, baja
0-50 cubs

53K Lot 42 meter# 39
sherds, baja
30-50 cubs

4/26/95 53K Lot 43 meter# 73, 53
sherds, obs
20-25 cubs

53K Lot 44 meter# 187, ~~188~~ 188
clearing wall
sherds, baja, shell
0-40 cubs

4/27/95 53K Lot 45 meter# 190, 191
matate frag.
sherds, baja, obs
0-50 cubs

53K Lot 46 meter# 7, 27
sherds, baja, obs, bone
30-50 cubs

53K Lot 47 meter# 28
sherds, baja, obs, tooth
10-50 cubs

53K Lot 48 meter# 64, 65
eastern hall (2 x .5 m)
sherds, baja, obs
0-30 cubs

53K Lot 49 meter# 4, 24
sherds, baja, obs, bone
30-60 cubs

53K Lot 50 meter# 5, 25
sherds, baja, obs, bone
20-40 cubs

4.28.95

P95-50-32

53K Lot 51 meter# 185, 186

0-40 cmbs

sherds, obs

53K Lot 52 meter# 202

0-50 cmbs

sherds, baja, obs, bone

53K Lot 53 meter# 203

0-40 cmbs

sherds, obs

53K Lot 54 meter# 213, 214, 215

0-30 cmbs

sherds, baja

53K Lot 55 meter 184.5 - 185.5

30-50 cmbs

2 oja's - 2 bowls

sherds, obs, baja

(one bowl is in one oja, one bowl is next to the other oja)

EAST of
T-REX

- one bag has random sherds & artifacts

- the 2 oja's and 2 bowls are bagged separately

- 3 soil samples are bagged separately

- 1 is from inside one oja, one is from inside the bowl in the oja, the third is from underneath the bowl inside the oja

- Line level 3 cm above datum 2

	Bowl Alone	Olla Alone	Olla w/ bowl
Top top	61 cm	61 cm	60 cm
Bottom	73 cm	73 cm	72 cm

5-4-95 53K Lot 56 meter# 206.5-207.5

0-40 cmbs

clay bead

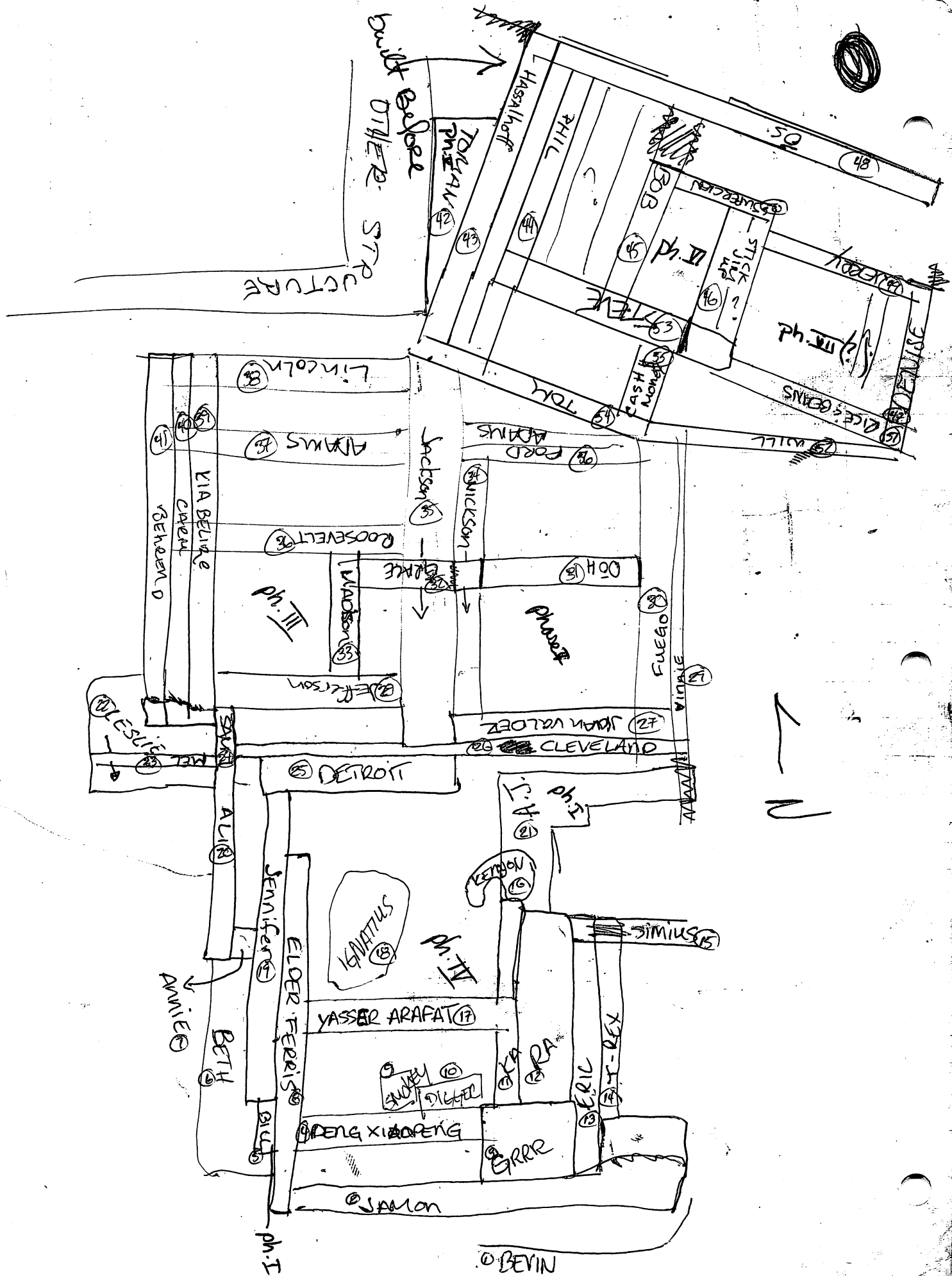
sherds, baja

53K Lot 57 meter# 64

40-50 cmbs

eastern half

sherds



5.8.95

P95-50-33

53K ^{Lot} 58 meter # 211.5 - 212

cleaning structure; looking for corner

0-50 cubs

2 manos, ^{obs} sherds

53K Lot 59 meter # 46, 47

cleaning walls; structure

46-80 cubs

sherds, obs

53K Lot 60 meter # 72, 73

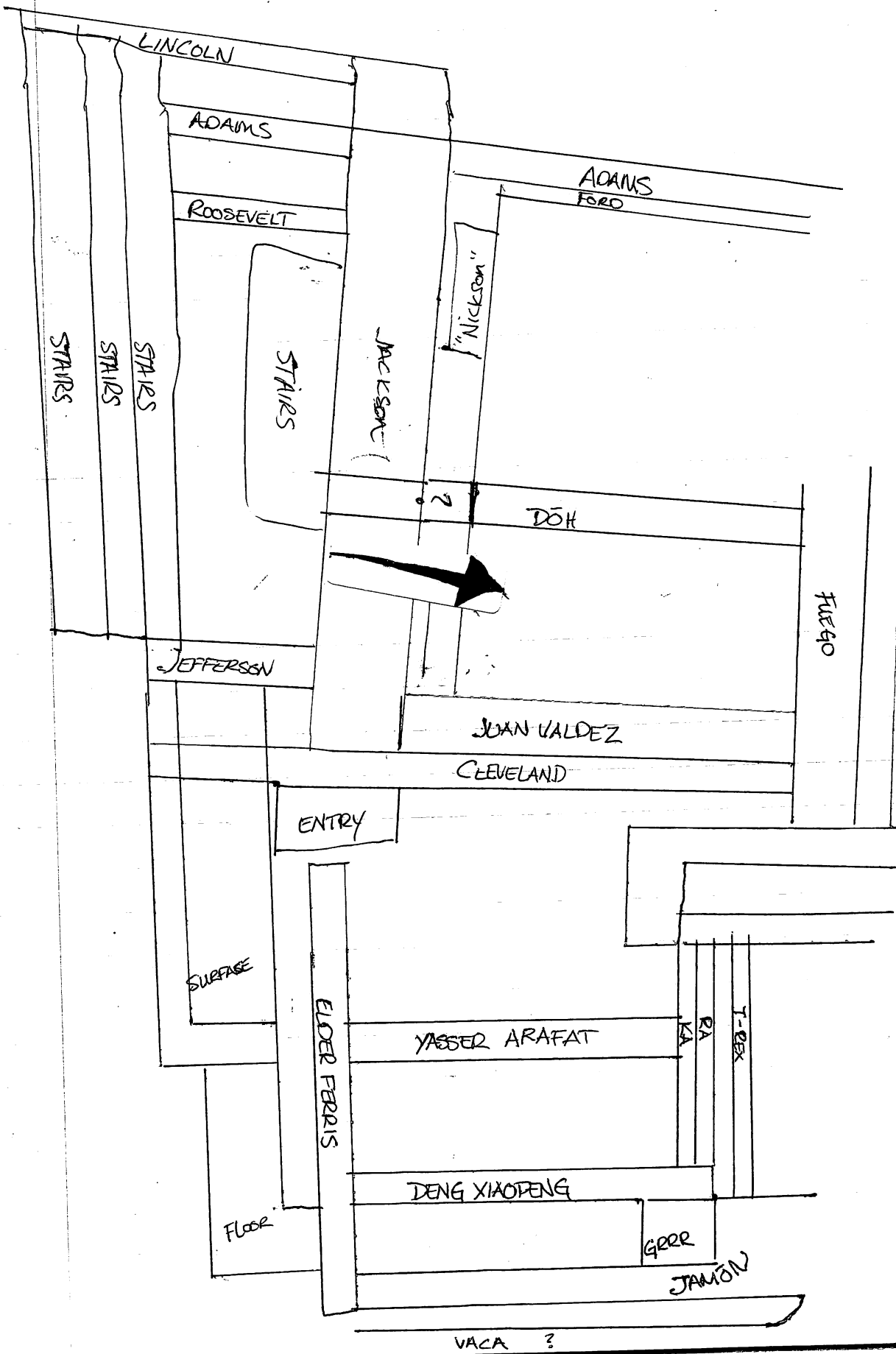
50-70 cubs

sherds, baja, obs

53K Lot 61 meter # 216

0-40 cubs

2 matate frags



Notes
Excavator #56

Structure 53(56a)

Structure 53(56a) is the northernmost construction in a complex, multi-structure group. Later clearing of the structure exposed about 95%, leaving only the final additions to the main structure unclear. Structure 53(56a) is orientated 92 degrees east of north, with basal dimensions measuring 5.2x5.4m. These platform facing stand between 0.5m and 0.7m high supporting two raised platforms. The eastern platform measured 5.2x2.4m and is slightly lower (0.1m) than its counterpart to the west. It is a large, open area with only a short wall stub jutting out 1.0m from the southern platform facing. The interior surface consisted of hard packed earth extending up to all but the last 1.4m of the room. The final 1.4m area consisted of a raised stone filled area which may have been the remains of a bench. Access to this room was gained through a 0.7m long entry stone on the southwest corner of the platform.

The raised platform on the western side of Str.53(56a) was a long and narrow room which measured 5.2x1.5m. This platform was divided into at least two distinct areas. The first area, located adjacent to the southern platform facing, measured 0.8x1.5m. The second area abutted the first area to the north and measured 1.2x1.5m. The final measurements for the second area ~~were~~ ^{would not} ~~unable~~ to be completely determined due to a waterline which cut a near-meter wide swath across the east/west axis of the structure. The boundaries for both of these areas were marked by subsurface walls, while the northernmost space also utilized a cobble stone surface.

A later addition off of the southwestern side of Str.53(56a) probably connected it to Str.53(56b). This addition consisted of a 4.0m long east/west platform facing which interdigitated with a 5.6m long north/south platform facing. Access up onto this raised surface area was gained through 1.1m long entry feature in the southwestern area of the structure.

Earlier constructions were partially buried by the later construction of the main structure. The southern portion of one such prior structure was later incorporated into the main structure. This earlier construction consisted of a 2.7m arc which was enclosed on at least two sides by western (3.7m) and southern (4.3m) platform facings. Cobble stones were laid down in the open areas around the arc creating a somewhat smooth patio area between its southern facing and the southern facing of the main structure. This cobble surface rested 0.5m below the southern platform facing of the main structure. A multi-component entry feature provided access to this area from the east. The top entry feature was 1.5m wide while bottom portion of the entry feature was only 0.9m wide. Three steps rose 0.5m to make a level entry onto the patio surface.

At least two other earlier constructions were overrun by the main Str.53(56a). All that remained of one was a 3.9m north/south ^{built} wall off the eastern side of the main structure. The other overrun structure extended partially beyond the northern

Name	Orientation	# of wide courses	# of deep	Stone Size S, M, L, XL	Stone Type F/S, R, C, CB	Length	width	height
1 BEVIN E/W		1	1	M	R, C	2.2	.25	.15
2 JAMON E/W		2 (4-E)	3	S, M	F/S, R, C	4.1	.4-1.6	.45
3 E/W 3 N/S GRRR (Block/ square)		1	3-5	S, M, L	F/S, R, C	.8 N/S	.6 E/W	.55-.6
4 DENG XIAOTENG E/W		2	3-4	S, M 1-XL	F/S, R, C	2	.2-.45	.25-.4
5 SMOKEY N/S ENTRY		1	1	XL	CB	.5	.4	.07
6 DIGGER E/W ENTRY		1	3	XL	CB	.55	.35	.3
7 YASER ARAFAT E/W		2	3-5	S, M	F/S, R, C	1.9	.3	.4
8 Simius E/W		2	2	S, M	F/S, R, C	1.9	.45	.2
9 A.J. E/W		2	1	S, M, L	F/S, R, C	2.15	.5-.75	.1
A.J. N/S		2	1-2	S, M, L	F/S, R, C	1.9	.5	.15+
10 T-REX N/S		2	1	S	F/S, R, C	2.1	.2	.05
11 ERIC N/S		1	3	S, M, L	F/S, R, C	3.05	.25	.4
12 RA N/S		1	5-6	S, M	F/S, R, C	3.15	.2	.4-.55
13 KA N/S		2	5	S, M	F/S, R, C	2.25	.2	.45
14 Kenyon E/W	Semi-circle	1	1	S, M	F/S, R, C	0.7	✓	.12
15 Ignatius N/S Entry?		1	8(?)	S, M, L, XL	F/S, R, C ^{MOSTLY} CB	1.	.25-.45	(1. m)
16 Elder Ferris N/S		2	3	S, M, L	F/S, R, C	4.	.5	.4
17 Bill N/S		1	1	L	C (CB?)	.6	.3	.1
18 Beth N/S surface		3	1	M, L	C, schist	2.1	.8	✓
19 Jennifer N/S		1	2	S, M, L, XL	F/S, R, C, CB	2.8 or 3.65	.4	.25
20 Annie E/W		2	2	S, M, L	F/S, R, C	.5	.5	.2
21 Ali N/S		1-2	2	S, M, L	F/S, R, C	2.8	.35	.3
22 Leslie N/S	surface	3-4	1	M, L, XL	Schist, CB	1.4	1.9+	.08
23 Mel E/W		1	2-3	S, M, L, XL	F/S, R, C	1.05	.35	.3
24 Sam N/S		2	2(3?)	S, M, L	F/S, R, C, CB	1.5	.55	.3-(.55?)
25 Detroit E/W	ENTRY	2	2(6?)	S, M, L	F/S, R, C, CB	2.6	.55	.25-(.6)
26 Cleveland E/W		1	2-4	S, M, L	F/S, R, C, schist	5.0	.2	.2-.45
27 Jackson N/S		2-3	3-4	S, M, L	F/S, R, C, CB	5.5	.6-.55	.45
28 Grace E/W		1	3	S, M	F/S, R, C	1.4	.25	.25
29 Nickson N/S		2	4-5	S, M, L, XL	F/S, R, C	3.35	.5	.4
30 Dot E/W		2	5-6	S, M, L, XL	F/S, R, C	1.5	.55	.50
31 Juan Valdez		2	3-4	S, M, L	F/S, R, C ^{matate}	2.85	.5-.55	.4-.45

Name	# of courses	"	Stone Size	Stone type	length	width	height
Orientation	wide	deep	S, M, L, XL	F/S, R, C, CB Schist			
32 FUEGO N/S	2-3	6-7	S, M	F/S, R, C	4.1	.4-.65	.4-.6
33 Vinnie N/S	1 (?)	1 (?)	L, XL	R, C	4.5	.3	.1-.25
34 FORD E/W	1-2	2-3	S, M	F/S, R, C	2.05	.35	.2
35 Roosevelt E/W	2	3	S, M, L	F/S, R, C	1.9	.4	.4
36 Lincoln E/W	2	3	S, M, L	F/S, R, C	2.2	.45-.5	.5-.55
37 Madison N/S	1	3	S, M, L, XL	F/S, R, C, CB	2.25	.35	.3-.4
38 ADAMS WE/W PART I	2	2-3	S, M, L	F/S, R, C	2	.4	.2-.25
ADAMS EE/W PART II	1	1-2	M, L	F/S, R, C	3	.25	.5-.10
39 Jefferson E/W	1	3	S, M	F/S, R, C	2.3	.25	.4-.45
40 KIBELINE N/S	1 (2 under- neath)	2	S, M CB-XL over-top	F/S, R, C, CB	5.5	.45	.35
41 COOM N/S	1 (" ")	2	S, M CB-XL	F/S, R, C, CB, Schist	5.5	.4	.2
42 Behrend N/S	1 (" ")	1 (2?)	S, M CB-XL	F/S, R, C, CB, Schist	5.5	.3	.1
43 Tom	1	3-5	S, M, L, XL	F/S, R, C, BB	2.5	.3-.35	.35
44 Will	1-2	2-3	S, M, L	F/S, R, C	3.2	.35	.5
45 Rice Beans	2-3	4	S, M, L	F/S, R, C	3	.7	.35-.5
46 Steve	1	3	S, M, L	F/S, R, C	1.2	.3	.4
47 Jenny	1	3	S, M, L	F/S, R, C, CB	2.5	.3	.3-.4
48 Superlien	1-2	5	S, M	F/S, R, C	1.3	.3	.4
49 Os	1	1	XL	CB, Matate, C	1.5 Buried	.45	.2-.25
50 Hasselhoff	2	2-6	S, M, L, XL	F/S, R, C, CB	5.5	.6	.8
51 Phil	2-3	4-5	S, M, L, XL	F/S, R, C, Matate	5.4	.3-.8	.4
52 Bob	1	3-5	S, M	F/S, R, C	1.7	.3-.35	.4-.6
53 Stick Jim Up	1-2	3	S, M, XL	F/S, R, C	1.9	.65	.4
54 Cash & Money	2	4-5	S, M	F/S, R, C	2.45	.4-.5	.6
55 Denise	1-2	3-5	S, M, L	F/S, R, C	2.1	.35-.7	.55-.6
56 Toman Surface	6-7	1-2	S, M, L	F/S, R, C	1.8	0-.85	.25

Name	° E of North	Below datum LL is 10 cm Above datum 1				O A I overrun about, integrate notes -
		Top	Top Middle	Bottom Middle	Bottom	
Bevin	86	E 110	W 114	M 125		None - part of other structure
Jamon	87	E 84	W 101	M 119		I w/ Elder Ferris O-Bill
Greer	90	N 84	S 42	S 90		A Greer, ERIC, KA, Trex?
Deng Xiaopeng	90	E 79	W 44	M 97		A-Jamon, KA, R Adjacent to ERIC
Smokey	-		M 74	M 83		I-Deng X
Digger	-		M 61	M 88		I-Greer, RA? O-KA? ✓
Yasser Ararat	90	E 70	W 62	M 103		A-KA, Elder Ferris, Smokey, Digger
Simius	90	E 79	W 83	M 96		A-Deng, Digger
A.J. N/S E/W	ON/S 90 E/W	S 90	N/WA E 83	M 100		A-Deng, Smokey
T-Rex	176	N 94	S 95	M 96		A-Elder Ferris, RA?, Ignatius?
Eric	0	M 51		M 91		I-Ka
Ra	0	N 50	S 57	M 98		O-T-rex A-Ra
Ka	0	N 50	S 78	M 98		A or I-ERIC
Kenyon	-		M 76	M 84		EW-none
Ignatius	20	not applicable				N/S overrun by Kenyon, Ka, Ra?
Elder Ferris	177	N 72	S 91	M 124		A-Overrun by Jamon?
Bill	177		M 115	M 126		Overrun by Eric, Simius
Beth	floor		M 109			O-Trex A-Jamon
Jennifer	0	N 92	S 87	M 117		A or I Simius Adjacent to Ra
Annie	90		M 85	M 107		O or I-Deng A-Jamon Adjacent to-
Ali	0	N 82	S 100	M 116		O-A.J. I-Greer ERIC, Ka
Leslie	floor		M 109			O-A.J. Adjacent to-Ra I-Yasser
Mel	89		M 82	M 110		A-Greer? overrun by Deng
Sam	0		M 59	M 108		O-A.J. A-Ra, Ka
Detroit	90	E 65	W 60	E 90		A-Yasser
Cleveland	90	E 67	W 70	M 84		Adjacent to Elder
Jackson	0	N 28	S 30	N 59		I-Jamon O-Bill I-Yasser, Deng?
Grace	90		W 23 E 17	W 49		A-Yasser, Deng Adjacent to Jen, 1934
Nickson	177		M 10	M 6		Overrun by Elder, Jamon, Jen?
DOH	90		M 16	M 67		overrun by Jen? Jamon
Juan Valdem	90	E 23	W 30	M 67		Adjacent to Jen, Bill, Ferris, Annie,

Dist in Blw
bottom course

S 68

I-Annie Adjacent to Jan.
A-Sam, Detroit, Leslie
A-Sam, Ali, Detroit, ~~Leslie~~, Ramon, Bethand
overrun by Mel
O-Leslie
A-Sam/Detroit
A-Jefferson, Ali, Mel, Cleveland, Carm
Detroit, Leslie I-Detroit?
A-Jen, Ali, Cleveland, Sam
I-Sam?
A-Sam, Detroit, overrun by Juan Valdez
I-Vinnie?
A-Cleveland, Jefferson, Madison, Roosevelt
Lincoln, Ford, Nickson
O-Adams I-Juan V. Overrun by Grace
O-Jackson, Madison
A-Nickson
A-Ford, Ooh, Juan V., Grace
A or adjacent to Jackson
A-Nickson, Fuego
I-Fuego, Jackson, Nickson?
O-Cleveland, Vinnie

Name	E & North	Below datum			Bottom	overrun, abutt, integrate
		Top	Top Middle	Bottom Middle		
32 Fuego	0		M 15	M 71		O-Vinnie, Cleveland I-Ford, Adams?
33 Vinnie	0	N 47	S 76	M 82		I-Juan V. A-Doh, Will, Adams?
34 Ford	90	W 31		M 57		A-Will Overrun by Fuego, Juan V.
35 Roosevelt	90		M 20	M 65		I-Cleveland Ford, Adams?
36 Lincoln	88		M 26	M 78		A-Nickson, Jackson Adjacent to Adams
37 Madison	0	N 36	S 41	M 66		I-Fuego O-Vinnie?
38 Adams	90		M 30	M 58		A-Jackson, Kia Beling, Madison
39 Jefferson	90		M 30	M 70		A-Jackson, Kia, Hasselhoff/Tom
40 Kia Beling	0	N 44	S 42	M 72		A-Jackson, Jefferson, Roosevelt
41 Carm	0	N 61	S 70	M 88		overrun by Grace
42 Behrend	0	N 78	S 88	M 96		O-I-Sackson
43 Tom Will	86		M 33	M 83		I-Kia Adjacent to Ford, Tom
44 Will Tom	110		M 27	M 59		A-Sam I-Kia, Madison
45 Rice? Beans	110		M 34	M 72		A-I-Jackson
46 Steve	108		M 4	M 36		I-Books Jefferson, Adams?
47 Jerry	120		M 43	M 79		A-Carm, Sam, Leslie, Ross, Adams, Lincoln
48 Super Cien	110		M 32	M 83		A-Kia, Behrend, Sam, Leslie
49 Os	124		M 77	M 94		A-Carm, Leslie, Chat?
50 Hasselhoff	21		M 1	M 86	S 82	Adjacent
51 Phil	30		M 8	M 93	S 42	A-Fuego Ford, Adams, Tom, Cash & Money
52 Bob	20		M 25	M 61		A-Denise O-Vinnie?
53 Stick Jim Up	28		M 38	M 82		A-Will, Adams, Ford Jackson, Lincoln
54 Cash & Money	22		M 17	M 73		I-Hasselhoff, Phil, Cash & Money
55 Denise	22		M 26	M 73		I-Steve, Cash, Denise
56 Toman	90		M 70	M 88		A-Stick Jim Up
						I-Phil, R & B
						A-Bob, Hasselhoff, stick Jim Up?
						I-Denise
						A-Stick Jim Up
						I-Stick Jim Up, Bob
						I-Denise? Hasselhoff
						A-Phil
						I-OS, Tom O-Toman A-Alan
						A-Steve Adjacent to Phil Dean
						I-Steve, Tom? A-OS
						O-Tom adjacent to Bob, Hasselhoff
						A-Steve I-Supercien
						Adjacent to Phil, Stick Jim Up
						I-Supercien
						A-R & B, Steve
						I-Tom, Phil, R & B
						A-W. II, Stick Jim Up
						I-R & B, Serry, OS
						A-Will Jerry?
						overrun by Alan/Dean
						Hasselhoff

Adams
Vinnie
?
Kia
phase I
Cleveland

5-12.

(Beverly)

Subans 530 + B.

5/10/95

$LH = 1550$

Initials	Date
----------	------

Prepared By

Approved By

	1	2	3	4	5
	POINT		\angle	MID.	DISTANCE (m)
1	1		✓ 197°	1780	26.24
2			✓ 196°	1810	26.02
3			✓ 195°30'	4275 2964	26.43
4			✓ 194°15'	4263 2964	26.03
5			✓ 194°15'	3120	26.73
6			✓ 201°30'	3031	28.53
7			✓ 205°45'	2621	25.09
8			✓ 204°45'	1762	24.96
9			✓ 201°	2707	28.11
10			✓ 198°30'	2859	27.34
11			✓ 199°30'	2573	26.49
12			✓ 202°	2731	27.35
13			✓ 202°15'	2665	26.99
14			✓ 198°45'	2775	26.25
15			✓ 200°	2564	25.46
16			✓ 203°30'	2792	26.26
17			✓ 203°30'	2773	25.89
18			✓ 200°30'	2533	25.24
19			✓ 201°30'	2561	24.46
20			✓ 200°45'	2586	24.37
21			✓ 200°30'	2674	24.15
22			✓ 200°45'	2782	23.84
23			✓ 196°15'	2768	23.23
24			✓ 196°	2792	23.76
25			✓ 200°	2656	24.22
26			✓ 197°15'	2886	26.04
27			✓ 197°15'	2754	26.81
28			✓ 198°15'	2508	26.28
29			✓ 194°15'	3060	27.14
30			✓ 197°30'	2985	27.95
31			✓ 202°45'	3109	28.05
32			✓ 203°15'	3090	27.61
33			✓ 203°45'	3162	28.35
34			✓ 205°	3111	27.75
35			✓ 205°30'	3058	26.95
36			✓ 203°30'	1865	27.55
37			✓ 205°15'	2843	26.65
38			✓ 206°15'	2944	26.93
39			✓ 209°30'	2719	24.89
40			✓ 207°45'	2705	24.66
				2400	

	1	2	3	4	5
	Pert		4	MID.	DISTANCE (m)
1			✓ 21 1°30'	2400	23.89
2			✓ 21 1°	2510	23.54
3			✓ 21 0°	2652	24.78
4			✓ 20 9°30'	2461	24.20
5			✓ 20 5°15'	2557	23.14
6			✓ 20 4°45'	2606	23.46
7			✓ 20 4°	2594	23.08
8			✓ 20 0°	2655	22.20
9			✓ 19 9°45'	2651	22.63
10			✓ 20 1°30'	2668	22.96
11			✓ 20 1°30'	2660	23.24
12			✓ 20 2°15'	2673	23.37
13			✓ 20 1°30'	2760	24.38
14			✓ 20 2°	2745	24.65
15			✓ 20 5°15'	2585	18.22
16			✓ 20 0°	2595	21.86
17			✓ 20 6°	2287	18.22
18			✓ 20 1°15'	2158	21.72
19			✓ 20 1°	2283	21.96
20			✓ 20 9°30'	2533	24.01
21			✓ 20 7°	2291	18.56
22			✓ 20 4°45'	1968	19.79
23			✓ 20 4°	1985	20.09
24			✓ 20 2°	2112	21.50
25			✓ 20 5°15'	1986	22.06
26			✓ 20 7°15'	1960	20.78
27			✓ 20 8°15'	20 03	20.50
28			✓ 21 1°	2083	19.37
29			✓ 21 2°	2114	19.54
30			✓ 20 6°	2120	22.20
31			✓ 20 5°30'	2151	22.82
32			✓ 20 6°30'	20 83	23.02
33			✓ 21 5°	2127	19.07
34			✓ 21 3°	2155	18.73
35			✓ 20 8°15'	1992	20.79
36			✓ 21 1°45'	2159	21.39
37			✓ 21 1°15'	2152	21.66
38			✓ 20 8°30'	1994	21.06
39			✓ 20 8°	2179	22.44
40			✓ 21 2°15'	2424	23.62



45-605 Eye-Ease®

45-305 2 - Pack

Made in USA

53 D+E (cont'd)

Prepared By	Initials	Date
Approved By		

	1	2	3	4	5
	Point			Mid.	Distance (m)
1				213°	23.36
2				209°15'	22.20
3				210°	22.65
4				211°15'	22.88
5				213°	21.85
6				211°45'	21.55
7				213°15'	21.00
8				211°45'	20.46
9				210°45'	21.19
10				212°45'	20.19
11				215°45'	21.20
12				215°	21.58
13				213°30'	19.66
14				217°15'	20.71
15				218°30'	20.66
16				214°30'	19.45
17				215°30'	18.99
18				219°30'	20.22
19				220°45'	20.00
20				215°30'	18.60
21				212°30'	23.00
22				213°15'	23.36
23				213°45'	23.43
24				214°15'	23.70
25				217°45'	20.55
26				223°30'	20.24
27				220°30'	20.60
28				222°15'	20.69
29				213°30'	24.19
30				213°15'	25.15
31				210°45'	25.45
32				209°45'	25.02
33				211°45'	24.11
34				210°	24.72
35				212°	25.37
36				212°45'	19.09
37				208°30'	18.24
38				202°	26.62
39				201°45'	26.10
40				201°15'	26.25



45-605 Eye-Ease®
45-305 2 - Pack
Made in USA

53 D+E (cont'd)

Prepared By	Initials	Date
Approved By		

	1	2	3	4	5
	Point		\angle	MID.	Distance (m)
121			✓ 200°	2453	26.18 1
122			✓ 204°	2521	25.55 2
123			✓ 203°45'	2450	24.65 3
124			202°30'	2635	24.53 4
125			✓ 202°45'	2631	24.05 5
126			✓ 201°30'	2656	24.19 6
127			✓ 217°	2543	16.86 7
128			✓ 221°	2580	15.74 8
129			✓ 218°30'	2581	15.33 9
130			✓ 215°30'	1951	18.56 10
131			✓ 213°45'	2160	18.32 11
132			✓ 212°45'	2154	18.04 12
133			✓ 210°	2009	17.81 13
134			✓ 208°30'	2084	17.92 14
135			✓ 211°15'	2219	16.16 15
136			✓ 211°30'	2064	15.80 16
137			✓ 213°30'	2104	16.30 17
138			✓ 216°15'	2718	13.50 18
139			✓ 219°30'	2453	14.15 19
140			✓ 220°	2658	13.25 20
141			✓ 215°	2765	13.05 21
142			✓ 212°45'	2156	15.81 22
143			✓ 214°	2182	14.54 23
144			✓ 209°15'	2443	14.10 24
145			✓ 208°	2598	14.55 25
146			✓ 199°	2494	14.45 26
147			✓ 198°45'	2490	16.89 27
148			✓ 205°45'	2331	17.98 28
149			✓ 207°45'	2273	17.74 29
150			✓ 200°15'	2463	16.45 30
151			✓ 209°	2527	16.56 31
152			✓ 208°45'	2371	15.82 32
153			✓ 201°30'	2274	15.62 33
154			✓ 201°	2353	14.95 34
155			✓ 208°30'	2454	15.09 35
156			✓ 210°15'	2329	15.79 36
157			✓ 210°	2374	14.39 37
158			✓ 212°30'	2395	14.54 38
159			✓ 212°	2266	15.73 39
160			150° (2330°)	2164	30.99 40
Plan datum 2 to Plan datum 1 (April's plan datum)					

edge of the main structure. Two northern walls protruded 1.25m beyond Str.53(56a) where they integrated with a 2.75m east/west wall. It is presumed that this part of earlier construction was buried under fill by the later phases of construction.

West of this small protruded structure and off the northwest corner of Str.53(56a) a small midden was located. It roughly measured 2mx1.5mx0.3m and was so densely filled with artifacts that hardly any dirt was excavated. This midden may well prove to be the best indicator of function for Str.53(56a). Other than this small midden, artifact recovery was not exceedingly high. Manos, ~~metates~~^{metates}, and obsidian were found along with the pottery, however, some areas produced large quantities of snail shells. These shells in conjunction with low numbers of artifacts and large open spaces ~~draw away from the idea of a production area,~~^{do not suggest} pointing more toward a residential living space.

~~A~~

Rel. to Dat. 1

Dat 2 .28

met 5 .38

6 .26

7 .16

8 .12

9 .05

10 0

11 .04

12 .08

met 13 .08

14 .08

15 .18

16 .30

17 .38

18 .53

19 .70

20 .80

Dat 3 = Dat 1

met 0 .78

1 .70

2 .58

3 .46

4 .38

0/1598/17

.1
~~253~~
 1.13