

1990

## PVN-005-Urban-Field Notes-1990

Patricia Urban

*Kenyon College*, [urban@kenyon.edu](mailto:urban@kenyon.edu)

Follow this and additional works at: <https://digital.kenyon.edu/honduras>

 Part of the Archaeological Anthropology Commons

---

### Recommended Citation

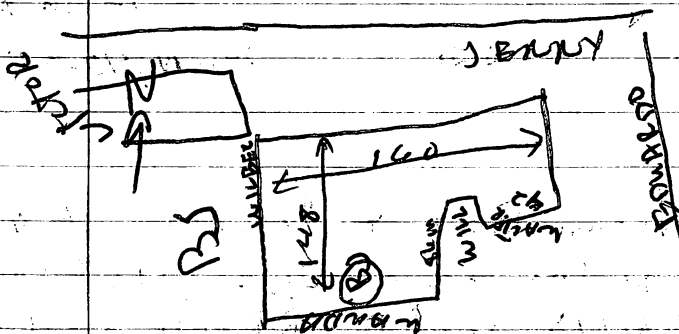
Urban, Patricia, "PVN-005-Urban-Field Notes-1990" (1990). *Four Valleys Archive*. Paper 7217.  
<https://digital.kenyon.edu/honduras/7217>

This Field Notes is brought to you for free and open access by the Anthropology at Digital Kenyon: Research, Scholarship, and Creative Exchange. It has been accepted for inclusion in Four Valleys Archive by an authorized administrator of Digital Kenyon: Research, Scholarship, and Creative Exchange. For more information, please contact [noltj@kenyon.edu](mailto:noltj@kenyon.edu).



③

The Bajareque is on dirt, 26 cm above ELECTRA surface i.e., there is a 26 cm layer of dirt on ELECTRA, then the Bajareque feature. The BJ feature is preserved to 10 - 25 cm in height. VICTOR'S south slopes tilt towards the BJ. There are sherds and pebbles in the BJ. It has some flat faces and stick impressions, and some burnt or at least unoxidized areas. There is a possible round depression in the BJ, with a diameter of ca. 15 cm; posthole? BJ runs 76 cm South from VICTOR, over WILBER. Also 32 cm East of WILBER and 29 cm North of WANDA seems to be the last construction activity here.



ELECTRA is a surface of small-med cobbles in the depression formed by WILBER, WANDA, WILL, WALTER, EDUARDO, JENNY.

WILBER abuts JENNY  
WANDA abuts WILBER  
WILL and WANDA less clear, also WILL-WALTER.

WALTER abuts EDUARDO. WILBER seems to rest on ELECTRA, but that's not clear. ELECTRA abuts JENNY and EDUARDO, and perhaps WALTER; WANDA is abutted by ELECTRA, but WILL sits on ELECTRA. WANDA seems to join with EDUARDO, going behind WALTER and WILL.

MARCOS is separated from the back of EDUARDO by 54 cm. EDUARDO is backed in that space by a cobble surface, which abuts MARCOS.

23 MAY 0919 AREA

WANDA is separated fr/ RUDOLPH by 30 cm. WANDA about RUDOLPH. RUDOLPH and MARCOS formed a corner, but RUDOLPH seems to stop to the west. Dirt seems to have been behind RUDOLPH - MARCOS

ALL units are in essentially the same brown coarse soil

East of EDUARDO (by 54 cm) is a possible surface, LAURA. Doesn't seem to be a platform. It's base is 18 cm above base of EDUARDO. Composed of whed - small cobbles and chinking stones, w/ one visible art block. West face is straight NS, but East face is ragged. We do not much faith in the diagonal line in the trench. Preserved/exposed dimensions: 2-25 BU on N side, 3-00 BU on South

LAURA

Stones	BU	NS	BU	NS
17	18	13	17	
12	16	3	6	
11	14	6	6	
21	32			

Going back to the platform, the walls/facings tend to have the largest stones on the outer faces, w/ flat LSides facing out. MARCOS RUDOLPH has the

largest rocks, WHITE BER the smallest; JENNY & EDUARDO are in between

LYNNETTE feature

A square feature made of whed & art blocks set on end with a cobble, pebble & cherd fill. Exterior 1-30 NS X 1-01 EU; Interior 9<sup>5</sup> X 39 BU. Height unclear; preserved to 32 cm. On S. one can see stones <sup>beside</sup> ~~underneath~~ LYNNETTE, going S 18 cm & abutting LYNNETTE

BASE of LYNNETTE about at level of JENNY base.  
Some of the rocks look burnt.

Stones BU	NS	HAT	BU	N	BU	NS
S Line 25	8	-	47	18	N Line 30	8
W Line 30	10				61	16

Around LYNNETTE there seems to be a square formed by JENNY, BENJI, RIFF, LISA, STEVE, and maybe KEVIN. The interior is 3.20 NS. The dirt is almost as much shed or dirt, eg, around LISA BENJI seems built over JENNY, and tilts down in its mid-section. RIFF's base is 3 cm below base of BENJI; LISA 10 cm above BENJI; STEVE is 3 cm above BENJI; LYNNETTE is 1 cm below BENJI. KEVIN is 20 cm below BENJI. JENNY is 15 cm below BENJI.

JENNY & KEVIN poss. contemporary  
BENJI, LISA, STEVE poss. contemporary

No rocks connect base of STEVE to top of KEVIN.  
KEVIN chips just part of STEVE. Bottom STEVE to top KEVIN = ca 14 cm.

NAME	EW <small>or 1.55m</small>	NS	<del>THICK</del> /HEIGHT
BENJI	3.9 cm	1.10 m	42-47 cm
RIFF	1.83 m	20 cm (core stone)	10 cm
LISA	23	2.55 m	12 cm (one stone)
STEVE	1.50 m	12 cm (core stone)	turns corner & goes 25 cm in to branch
KEVIN	1.10 (goes into bank)	23 cm (one stone)	17 cm (one stone) (weird)

No stone sizes taken; see sections

## 23 May of 19 AREA

⑤

STEVE seems to stop short of LISA, about 7-10 cm  
Top STEVE roughly = base LISA

LISA & BIFF in the shed-rich earth. Shed levels are in  
the sections, and go west under (one) and up to (one)  
TOMAS.

NOTE: <sup>④</sup> The 3 rods south of LYNETTE seem to be keeping  
the big rock in the South line from springing out  
at the base. <sup>③</sup> LISA goes over BIFF <sup>②</sup> BENJI ~~KEE~~ EW

SCOTT Line under TOMAS: abutted by BENJI.  
SCOTT's base (exposed) 4 cm above BENJI; could go  
lower. SCOTT is 45 cm West of BIFF-LISA corner.  
TOMAS on South rests on SCOTT; at end of SCOTT  
is 33 cm above SCOTT. SCOTT 2-14 cm NS (under)

TOMAS is scalars on the east. It is the East  
face of BILL. TOMAS is about 25<sup>47</sup> cm high, 33 BW  
(or one stone) often less. It is 6.05 m NS. It  
seems in elevation in one drawing. One layer/course of  
cobbles w/ chinkers below. Base TOMAS 50 cm above  
base of BENJI.

### STRUCTURE CURRIT

BILL: East summit wall, w/ TOMAS; 56 cm TOMAS-BILL  
thickness, BW. BILL itself 1 stone, ca. 25 cm.

Bill is <sup>sloped</sup> battered in the S. Accn, possibly from falling to East.  
BILL = 39 cm high in South room; excavated to depth of  
50 cm in North room, but base was never reached.

Total NS length 24.33 b/ corner of HENRY to corner with  
ELSA. ELSA abuts BILL, as does OWEN (North wall  
of South room). BILL runs below c? surface of S. room.

(6)

B/LK has 4-5 courses of med-small sbbbs, flat faces out, densely packed w/ chinking stones. It is well-built.

BL	NS	Thick		BL	NS	Thick
19	22	4	understones	-	17	7
16	23	7		-	28	6
15	18	9		-	29	7
14	25	8			8	4
14	19	8	chinkers		8	3
18	16	7			6	2
13	23	7			13	6
18	16	12			16	6

Brown earth matrix

OWEN is N wall of south room. ARMANDO (the West wall) abuts OWEN. ELSA is the south room wall. ARMANDO runs through/under ELSA. ELSA sits above the room's floor surface (name unknown). ~~ARMANDO may also sit on the floor~~ Floor abuts ARMANDO. Floor abuts OWEN.

There may be a gap/doorway in ARMANDO, beginning at N of ELSA, and to S of OWEN. Gap is 60 cm wide. ARMANDO Total NS (including pt. S of ELSA) = 3.66 m. It is 70 cm at its highest by OWEN; it is 23 cm in the gap area. It's 16-20 cm thick. ARMANDO is seen in elevation in a drawing.

OWEN ends on West at possible post hole. Total BL = 1.75 m; 43 NS. Height max above floor = 71 cm.

24 May

⑤

OWEN not much deeper on North face. = 71 cm, well above base of BILL, and a later construction than BILL. OWEN very nicely constructed. About 3

	EW	NS	Thick		EW	Thick	courses
Top row	20	17	4	Lower, N face	18	8	of
both sides	24	16	6		11	6	cobbles,
	13	12	3		21	5	heavily
	25	21	5		2	3	pacted
	20	7	7		7	3	and under
st of rock	22	21	17		6	3	lain by
							chinkers.

Between walls 2 faces are chinkers and dirt.

ARMANDO in the room is not free standing; is narrow, and not well-built. It is thicker South of ELSA. Has 2-3 courses, lots of small ~~size~~ <sup>size</sup> stones.

Room = 2.15<sup>m</sup> NS X 1.35 EW

ELSA runs fr/ BILL to JESSE?, 2.80 m. It's 68 cm thick N-S. Max height = 60 cm. A possible doorway starts 2 m west of corner of BILL. Stones drop down, construction changes, there is some rock tilting into "door". ELSA not as well made as BILL or OWEN. No clear coursing, mostly small-med. cobbles, and chinkers. It is built up and over ARMANDO, and starts 30 cm in the West room.

	EW	NS	Thick		EW	Thick
Top row	16	14	6	Lower	16	6
	17	23	10		16	5
	12	14	4		17	5
	24	32	6		15	5
	25	23	7		15	5
	24	21	5		15	4
	22	22	8		15	4

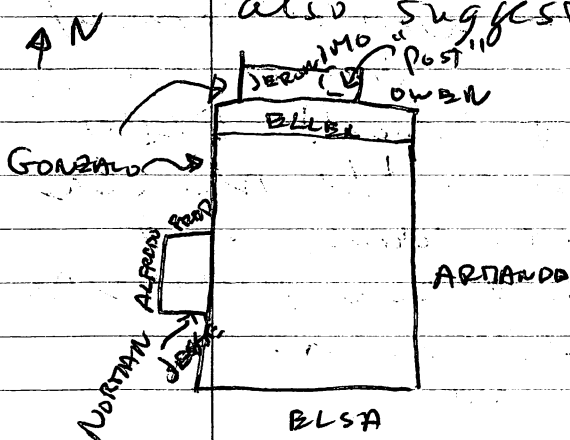


8

ELSA's S face is very rough. Gap is 80 cm wide. The gap could be a filled-in doorway, or a step-up.

West room has melted *pasir* region on South end abutting ELSA. RJ slope 5 cm west of back of ARMANDO, 9 cm East of JESSE; 6<sup>25</sup> cm North of ELSA. Darker in color, to black, in lower portions. May have been a floor. Also some apparently fallen chunks

Room = 2.26 NS X 1.32 EW, excluding ~~both~~ niches. ~~and~~ but including small bench/shelf. Shelf - ELLEN - is 3.6 cm NS X 1.32 EW. Abuts ARMANDO, GONZALO (the NW room corner) and lower line below OWEN and JERONIMO. GONZALO and OWEN seem to mark an old room entrance, with JERONIMO constructed later (abutting GONZALO) and the poss. post support. JERONIMO has 5 cm of dirt + RJ between it and lower line back of ELLEN. TINA is the lower line. GONZALO has a stepout, also suggesting a doorway. So, one may have stepped up onto ELLEN, then onto TINA, to get into next room. After that, area was closed, 'post support' made, and bench added in North room (bench = ANN and RON)



stepped up onto ELLEN, then onto TINA, to get into next room. After that, area was closed, 'post support' made, and bench added in North room (bench = ANN and RON)

See 1:10 plan of summit for detailed view, and stone sizes, also section.

Heights: FRED = 46 cm GONZALO = 56 cm  
JESSE = 41 cm JERONIMO = 47 cm ELLEN = 15 cm

24 May 1996

(9)

BASE of ELLEN = top of bajareque melt - GONZALO is at least 5 cm below base of ELLEN. ELLEN rests on dirt, w/ lots of tiny pebbles, clayey.

JERONIMO is unusually badly made. TOP

STONES	EW	NS	Thick		EW	Thick
ELLEN	15	15	5	Lower	16	6
TOP	25	12	7		5	3
	26	13	10		6	2
	18	13	5			

The circular feature is 29 cm in diameter.

# NORTH<sup>WEST</sup> ROOM

SHERBIE on East; TORI on North; HOPE on West; Bench is N pt = ANN, RON is West part. CARL is Southern wall, West of bench.

OWEN & JERONIMO define South side.

COLLEEN is a lower line <sup>predates RON</sup> ~~predates~~ ANN, postdating

TORI (abuts TORI), defines edge of schist floor; abuts CARL. RON and ANN sit 17 cm above COLLEEN, w/ dirt in between.

A section comes across TORI & goes over BILL and TOMAS.

SHERBIE is built over TORI, including running over niche/dip in TORI. SHERBIE is very thin = 29 cm <sup>EW</sup>; it's 60 cm high. It abuts OWEN, runs 2-10 m NS, North of OWEN.

TORI is 50 cm high max. Facing = 26 cm, but whole wall = 1-30 cm. (Eilken removed the middle)  
TORI = 3-10 m EW w/; the room - TORI probably becomes HENRY in the NE room. HOPE abuts TORI.

HOPE = 52 cm high. Runs 18 cm ~~the~~ N side in the room; is 57 cm thick including JADWICA as its west face. LATA floor abuts TORI. CARL abuts HOPE, and rests on the floor. CARL stands 52 cm high. CARL runs 98 cm East to RON; RON abuts CARL. ~~CARL~~ 65 cm East of CARL-HOPE junction, CARL steps out 5 cm to N, then continues ~~East~~. Outset abuts the main pt. of CARL. The Outset rests on COLLEEN, but COLLEEN abuts CARL.

RON comes 90 cm N from CARL's Outset. RON = 45 cm high.

ANN to RON corner = 1.90 m; = 29 cm high. Steps 10 cm short/West of SHERBIE. RON & ANN 20 cm above TORI base.

HOPE has 4 clear courses of medium cobbles, but TORI is not clearly coursed. Both are well made. CARL has 2 courses, cobbles & chinkers. SHERBIE doesn't have clear courses and rocks are fairly small, with few chinkers.

In SHERBIE 50 cm South of TORI, the base of SHERBIE rises/steps up abruptly 15 cm. Base of SHERBIE by TORI still 6 cm above base of TORI.

ANN & RON have 2-3 courses, virtually no chinking stones, but dirt packing. Little effort to put flat faces out either.

COLLEEN = small cobbles & chinkers set in dirt, rests on Lajas, stands 7 cm above Laja floor, but dips on East, to 16 cm high.

(12)

Northwest room = brown earth floor East of COLLEEN. Schirt WEST of COLLEEN. Schirt probably not visible in final occupation.

North east room is unclear. Probably had earth floor. No entrance discernable. 70 cm below top of SHERBIE is an 8-cm-thick sand level. Above and below it is the usual brown dirt. Sand lens is level and goes across the room. Sand rises 5 cm from North to South. Room = 1.8 m N-S x 1.0 m interior dimensions.

HENRY = 78 cm exposed height; goes deeper but not excavated;  $\approx$  52 cm thick N-S. Seen in elevation 4 courses, med. cobbles, clanking, like BILL, HOPE, OWEN. BILL and HENRY interdigitate.

$\therefore$  TORI/HENRY and Bill are prob. parts of original structure.

Right behind HENRY to North are large cobbles with flat faces to North. They make a corner w/ TOMAS.

ALFONSO = cruddy North face of platform. From front of HENRY (S-side) to N face ALFONSO = 1.16 m.

[SHERBIE: on East side we did not excavate in to see back/East side, as it is so thin that it would have been damaged.]

ALFONSO added to HENRY, but seems to be back of North of TORI. This is confusing.

24 May 1990

STONE SIZES

EW

NS

THICKNESS  
HEIGHT

NS

HOPE

17

21

5

Lower

15

6

TOP

17

22

6

HOPE

15

9

Line

12

13

5

21

5

21

14

3

charter

5

3

16

13

4

5

3

18

21

4

3

12

EARL

27

21

6

CARL

22

8

stepout

16

12

7

LOWER

11

8

?

19

3

9

2

22

15

4

7

3

RON

18

20

4

LOWER

23

10

15

20

5

19

9

COLLEEN

14

22

2

charter

EW

9

NS

6

2

15

19

3

4

5

2

18

13

3

11

7

2

ANN

24

18

6

EW

upper

23

21

15

ANN

16

6

level

24

20

9

lower

26

15

15

14

3

14

20

3

12

15

6

SHERIE

18

11

3

long  
dim. ruins  
parallel to  
length, not  
perpendicular  
which is the  
usual way

20

10

3

11

14

3

6

12

3

11

20

4

11

19

5

TOR is seen in  
elevation as in  
HEAVY

24/7 Aug

(13)

TORI does not seem to have a defined/clear North face/side, if ALFONSO isn't it. HENRY could step out before going west. 1.3 m (W) of HENRY's NE corner, HENRY would step out 6.5 cm then runs West as ALFONSO. There is an inset corner, with the stuff Eileen called ALFONSO on the NE actually being jumbled.

WRONG ALFONSO - 74 cm high at max. Is 4.2 m E to corner of JAMAICA. ALFONSO goes a further 78 cm West, but construction is different. Cobble set on end. This part is called SAM.

SATIN EW	Ns	Thick
11	31	17
8	30	13
6	29	17
5	13	15
5	15	13

SAM = 99-25 cm high. Small chunking stones around cobble, and cut blocks set on end. SATIN's here is 17 cm above base of ALFONSO.

ALFONSO	17	13	4
Top	21	14	4
	20	19	4
	18	23	6
Lower	12	-	3
	12	-	3
	6	-	2
	3	-	4
	5	-	2

ALFONSO has no clear courses, & is rough in appearance. Red cobble and chunking stones. Larger stones at base & at top, w/ small stones in between.

Directly off NE corner ALFONSO - 47 cm  
 r/corner is a circular limestone or rhyolite  
 stone, fractured - Diameter = 48 cm - Top is  
 same depth as exposed ALFONSO base.

1.90 m N of ALFONSO is next structure,  
 PATI is the base facing - PATI = 52 cm  
 high at maximum - SW exposure = 1.90 m;  
 45 cm thick N-S.

1.17 m east of edge as exposed there  
 is a change in construction, a break, or  
 though one part was added. The Western  
 part seems added. The East side of  
 break has a cut block at its former  
 corner, which block faces West.

PATI = 3 course med. cobbles & chinking  
 stones, w/ chinking stone foundation.

PATI	EW	NS	Thick		EW	Thick
TOP	13	15	10	Lower	6	3
	15	21	2		4	3
	27	9	13		5	2
	15	21	6			
OB	35	30	12			
	26	18	8			

There may be a cobble surface called GRIFFIN  
 that abuts PATI. Extends 20 cm to S from  
 PATI, and goes East into excavation. GRIFFIN  
 lines up w/ change in construction in PATI; it forms  
 the Eastern section of PATI.

24 May 1980

(15)

## South Basal Facing

We have renamed it TIM. TIM stands 1 stone high or 12 cm. No thickness measurement. It is exposed in 3 discontinuous segments. SE corner not clear, nor SW. It may make a corner w/ DAE (from West side axial). TOMAS, BILL, & ARMANDO come South to TIM. BILL stops 36 cm North of TIM's South face. ARMANDO stops 19 cm North of ~~the~~ South face TIM, and runs over TIM in part. TIM is mid-cobbles, flat faces to South, very few chinking stones.

	stones	NS	Thick	Bu	NS	Thick	Bu	NS	Thick
TIM TOP	17	14	4	CB 40	28	13	40	21	9
LINE	35	29	10				25	23	9
	—	24	8						
Eastmost exposure				Mid expose			West exposure		

At least on SW TIM is backed to N by cobbled earth surface, runs N for a meter to JEFF. JEFF runs down behind surface. Surface stops 18 cm short of JEFF.

37 cm South of TIM is JOE line; = 15 cm high, but base not cleared, goes 5-7 cm below base of TIM. JOE only exposed E-W for 2 cm. For 27 cm NS. JOE seems to face South. JOE not seen in other 2 south trenches; ∴ is a very limited feature.

JEFF is the western basal facing. It seems to be SANALCA, i.e., Billen gave it 2 names.



10

JEFF/JANICA (hereafter JEFF) may corner w/ ELSA. But on East 1m Sot Ntare ELSA may be a corner,  $\therefore$  ELSA is 1m thick(?)

Returning to reexamine ELSA, ELSA may be made of 3 lines, 2 on the south the original summit Str. the Northern one an addition that goes over ARMANDO. In the gap/depression in ELSA, ELSA is thinner NS, as though the addition isn't there. The N line is 26 cm. ELSA gets progressively narrower from East corner to the "gap" from 1m at corner to 55 cm at "gap".

JEFF is 38 cm high on N line, rung back East 36 cm to PEGGY. PEGGY may run over to HOPE, but northern section is bad (work of SEAN). PEGGY = 44 cm high. Small elevation of JEFF done to show relation to MARTHA, BOBBY, & SEAN. BOBBY a lower E-W wall, under SEAN and DALE.

Upper PEGGY has its SW corner 33 cm North of South JEFF. It is preserved 1.73 NS. Lower stones go to HOPE. Corners, & run East to excav. for 53 cm. PEGGY goes down behind JEFF. PEGGY has ~~no~~ drinking stones

	E W	NS	Thick
PEGGY	24	26	8
	23	19	9
	23	17	7
	16	25	5

24 May

(13)

SEAN runs E-W, stopping 16 cm west of JEFF, w/ dirt in between the two. SEAN rests on CU BA. CHRIS is between CU BA and JEFF. Pat thinks it's steps. E. seems to have ripped out one layer of rocks between CU BA & CHRIS. CU BA does not run all the way North to SAT, stops 1-80 m South of SAT North face. CU BA = 2.62 m NS in total. Incorporated into SEAN. On N end CU BA, it is 22 cm from top of big basal rocks to top preserved.

CHRIS stones go over JEFF/JAMAICA. Top CU BA preserved to top CHRIS preserved = 15 cm step up. CHRIS = 45 cm high. It is behind upper CU BA, ~~but not~~ <sup>and behind</sup> the big lower stones. CHRIS is 20-40 cm E-W (one stone). LOWER CU BA 30-35 cm E-W.

CU BA not entirely exposed. It has a level of large stones, with small above on North, and smaller below. Combining the exposures, CU BA would have been ca. 40 cm high, or more. We can't tell how much was supposed to show.

CHRIS has a top row large stones, smaller ones below. Fill has very small rocks.

CHRIS

Top

E-W	NS	Thick		NS
20	40	18	lower	7 5
40	40	20		8 8
43	17	14		9 3
35	22	7		

CUBA	BW	NS	Thick	SEAN	BW	NS	Thick	Chimney	EW
Big	26	29	7		28	30	43		10
stones	37	29	14	TOP	26	29	6		
	32	43	-	rocks	22	23	9		
					20	28	6		
					27	22	3		

SEAN runs BW 1.50 m - ~~CA~~ F's ca. 33 cm NS. something may be missing on N; 33 cm high. Not a nice wall. 2 lines med-large cobbles, some clinkers, in consistently used, mostly dirt in between the rocks. Flat faces South. Extends 78 cm West of CUBA's West face

MARTHA is an earlier construction. IT runs under JEFF. Is at least 40 cm; bare not reached in excavation. Total EW expose 40 cm West of JEFF. Four courses med-small cobbles and a few clinkers, but mostly dirt. Is seen in elevation in the section.

40 cm N of MARTHA is BOBBY. BOBBY: 39 cm high, but are don't have the base. It is much like MARTHA. It is below SEAN by 8-11 cm, & below CUBA. Runs under JEFF, too. Total BW exposed is 1.74. It goes under DALE to West. BOBBY's cobbles are slightly larger than MARTHA's

DALE runs over BOBBY. It is exposed 80 cm to N St/ trench wall; N end circular; 27 cm high. Built like BOBBY & MARTHA: 3 courses, med-small cobbles, dirt mortar, few clinkers. Top of DALE is - in depth to base of SEAN

OP 19 AREA -- Str. 62 (Neil's orig. str.)

North east Room -- Defined by CLAPTON on E, BUCKLEY on N, PAGE on S, and RITA, <sup>West</sup> and UNGEBUNG protrudes into it.

Interior dimensions:

NS = 1.85 m E to 2.20 on West (BUCKLEY & PAGE)

EW at BUCKLEY 3.75 m (RITA to CLAPTON)

EW at PAGE 2.55 m (UNGEbung to CLAPTON)

Probable earth floor, though some rock in SE area. Sheds at level of probable earth floor.

CLAPTON <sup>West side</sup> runs over PAGE. CLAPTON and BUCKLEY seem interdigitated. BUCKLEY and RITA seem interdigitated.

CLAPTON is <sup>(one)</sup> 1.2 m high on West face, 12-20 cm, 72 cm EW at BUCKLEY. South of BUCKLEY 1.10 m may be a doorway in CLAPTON. CLAPTON there is 45 cm wide. Eastern side is inset, West a straight line. "Door way" 72 cm wide N-S. May have been filled in, or is full of tumble. If filled, was rather casual. CLAPTON is med-large cobbles, no real set of flat faces. Almost no Chinking Stones.

PAGE is seen in elevation in a section. ∴ no rock measurements. PAGE ca. 28 cm high. Runs 1.65 m West fr/ CLAPTON, then steps down. PAGE lower is earlier, as seen in step down.

CLAPTON  
West  
East  
door(?)

(20)

Step down is 1.0 m wide to UNGEBUNG. Top of step down just showed in earth floor. We went deeper on N side. UNGEBUNG rests on earth above PAGE; 11 cm dirt between PAGE and U.B. No coursing; med-cs 4 bbs. Sloppy construction; few chinkers. Lower PAGE is coursed and better masonry; 3 courses exposed, few chinkers, like BOBBY, MARTIN.

BUCKLEY is

DATE

poorly constructed and rather jumbled looking on the south. On its N face it is better, though no clear coursing. Flat sides of rocks face North. Is 42 cm high on N exterior at NW corner w/ RITA. Total E-W is 5.10 m NW to NE exterior corners. On South face stands 50 cm high. NS thickness 95 cm at NE corner; 57 cm at NW corner.

[Sherds are under CLAPTON and BUCKLEY]  
on inner/room faces.

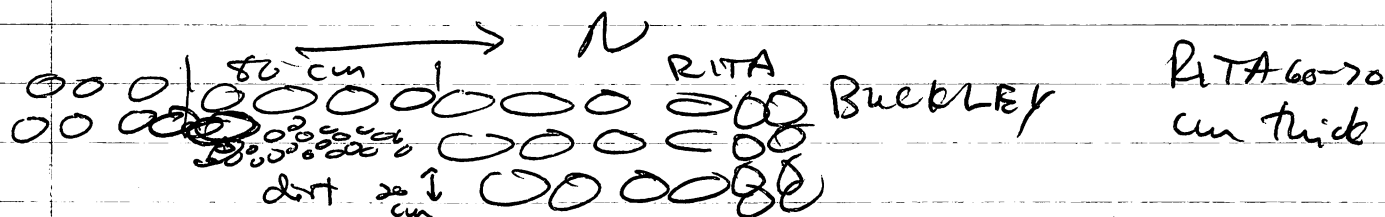
BUCKLEY has small out set on South face opposite UNGEBUNG, as though making an entry way. Begins 1.05 m East of RITA-BUCKLEY NW interior corner, and it is 60 cm wide E-W, and protrudes 33 cm to south from main wall. It's integrated w/ BUCKLEY. BUCKLEY projection - U.B. gap is 90 cm. At end, with RITA, BUCKLEY etc, an enclosure 1.20 m NS and 1.05 E-W was made.

In the enclosure, is HENDRICKS feature, a square 78 cm NS x 63 cm E-W. It has a rock on its base. Seems to run under RITA, and may run under UNGEBUNG; if so, U.B. rests on it.

(2)

HENDRICKS had a shell and chert tool concentration w/ it. RITA's base is higher than HENDRICKS by 2 cm. The rock inside is 40 cm NS x 20 cm EW.

RITA is 70 cm EW, and 3.40 m NS on the West face. Height on West. RITA has a change in construction 85 cm South of NW interior corner and on West face 1-97 South of NE exterior corner. On West face, base steps up at this pt. 20 cm, and rests on dirt. On East, med. cobbles are replaced by linking stones and dirt, with some cobbles higher. Dirt is below small rocks. For 80 cm S. of change's N edge ~~the~~ RITA has linkers, but then they stop, and there are only the upper 2 levels of cobbles. RITA there is 30 cm.



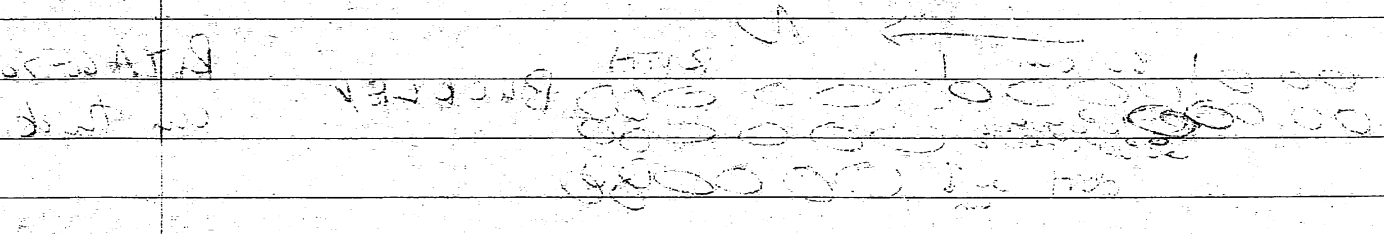
Blank / change corresponds to HENDRICKS and UNGEBUNG space, and to old doorway. But on West correspondence is less clear.

NW corner rock of UNGEBUNG is built into RITA; RITA built over UB, then drops down on South. UNGEBUNG -- seems to turn West in part, and this part was incorporated into RITA back side to back side of the 2 integrated UB. West rock = 1.05 m. NS. PAGE runs under UNGEBUNG, & may appear on West of it.

②

Handwritten text at the top of the page, possibly a title or header.

Main body of handwritten text, consisting of several lines of cursive script.



Handwritten text below the diagram, continuing the narrative or description.

Final section of handwritten text at the bottom of the page.

RITA on west face has 2 clear courses; flat sides out this way; below courses some med-cobble, packed w/ chinkers.

UNGE BUNG is a late feature, but not as late as RITA. UB <sup>base</sup> drops 9 cm from S to North. It is 30 m NS, 1-05 EW. At Z166Y it is 85 cm but at North end is 25 cm. UB's base is 19 cm above the base of Z166Y, and seems to about it. UB is a big projection N & E sides, and to a lesser extent on the W, are flat rock sides. For 1.55 m is 3 courses, after that 2 as top level missing, then 1 course at end. Chinkers used.

### East Central Room

Defined by PAGE<sup>(W)</sup>, CLAPTON<sup>(E)</sup>, Z166Y<sup>(S)</sup>, UNGE-BUNG (west) NS at CLAPTON = 1.28 m, at UNGE BUNG 1.58 m. Z166Y = 2-30 EW interior. Barter room floor, w/ many fewer shreds than NE Room. ~~Box 2~~

Z166Y max height N face 53 cm; 89 cm N-S thickness. Three levels med-large cobble, underlain by mixed cobble and chinkers. There may be an old entrance on West, in CLAPTON, beginning 3.40 m South of CLAPTON-BUCKLEY interior corner. Area 60 cm wide very casually made, or perhaps filled with tumble. We lean towards the tumble theory. CLAPTON 55-70 cm wide at E Cent Room.

See  
later  
page  
from  
Dette  
measurements



②

1. The first part of the problem is to find the value of  $x$  and  $y$  such that  $x^2 + y^2 = 1$  and  $x + y = 1$ .  
2. The second part is to find the value of  $x$  and  $y$  such that  $x^2 + y^2 = 1$  and  $x - y = 1$ .

3. The third part is to find the value of  $x$  and  $y$  such that  $x^2 + y^2 = 1$  and  $x + y = 0$ .  
4. The fourth part is to find the value of  $x$  and  $y$  such that  $x^2 + y^2 = 1$  and  $x - y = 0$ .  
5. The fifth part is to find the value of  $x$  and  $y$  such that  $x^2 + y^2 = 1$  and  $x + y = 1$  and  $x - y = 1$ .  
6. The sixth part is to find the value of  $x$  and  $y$  such that  $x^2 + y^2 = 1$  and  $x + y = 1$  and  $x - y = 0$ .  
7. The seventh part is to find the value of  $x$  and  $y$  such that  $x^2 + y^2 = 1$  and  $x + y = 0$  and  $x - y = 1$ .  
8. The eighth part is to find the value of  $x$  and  $y$  such that  $x^2 + y^2 = 1$  and  $x + y = 0$  and  $x - y = 0$ .

9. The ninth part is to find the value of  $x$  and  $y$  such that  $x^2 + y^2 = 1$  and  $x + y = 1$  and  $x - y = 1$  and  $x + y = 0$ .  
10. The tenth part is to find the value of  $x$  and  $y$  such that  $x^2 + y^2 = 1$  and  $x + y = 1$  and  $x - y = 1$  and  $x + y = 0$  and  $x - y = 0$ .

11. The eleventh part is to find the value of  $x$  and  $y$  such that  $x^2 + y^2 = 1$  and  $x + y = 1$  and  $x - y = 1$  and  $x + y = 0$  and  $x - y = 0$  and  $x + y = 1$  and  $x - y = 1$ .  
12. The twelfth part is to find the value of  $x$  and  $y$  such that  $x^2 + y^2 = 1$  and  $x + y = 1$  and  $x - y = 1$  and  $x + y = 0$  and  $x - y = 0$  and  $x + y = 1$  and  $x - y = 1$  and  $x + y = 0$  and  $x - y = 0$ .

Small space defined by UNGEBUNG (east), possible PAGE remnants on N, ZIGGY on South, RAFAEL on West. Earth floor. RITA ends and RAFAEL is built off West face of South end of RITA. RAFAEL overlaps that face of RITA by 14 cm. ZIGGY to PAGE = 1.68 m (NS); Bu at PAGE = 82 cm; Bu at ZIGGY = 1.05. Space is irregular.

RAFAEL'S flat rock sides face East. Bases of RAFAEL & RITA at junction are at the same level. RAFAEL = 21 cm high, is 47 cm Bu by 1.25 m NS. Has 2 levels med-small cobbles, few chinks; a fairly crude wall.

UNGEBUNG'S West face same as its East face.

CHAPTON ends at ZIGGY. PAGE-CHAPTON junction end with a cut block. CHAPTON 3.65 NS from Bottom NE corner to door.

South Room defined by SANTANA (east), ZIGGY (North), BRAT (South) and ?? on West; we name West wall T1C. RUBEN runs under ZIGGY; an earlier wall?; may line up w/ JOE or TIM at Str. 60. RUBEN exposed for 47 cm E; no base; one line of cobbles visible.

Room is 5.0 m Bu at ZIGGY; 2.22 m in center N-S. We no longer believe in ZIGGY's putative S. projection

26

20/12/19 (Sat) 1st day of the trip. We went to the beach and saw many seals. The weather was very cold. We saw many seals and some of them were very close to the shore. We saw many seals and some of them were very close to the shore. We saw many seals and some of them were very close to the shore.

21/12/19 (Sun) 2nd day of the trip. We went to the beach and saw many seals. The weather was very cold. We saw many seals and some of them were very close to the shore. We saw many seals and some of them were very close to the shore. We saw many seals and some of them were very close to the shore.

22/12/19 (Mon) 3rd day of the trip. We went to the beach and saw many seals. The weather was very cold. We saw many seals and some of them were very close to the shore. We saw many seals and some of them were very close to the shore. We saw many seals and some of them were very close to the shore.

23/12/19 (Tue) 4th day of the trip. We went to the beach and saw many seals. The weather was very cold. We saw many seals and some of them were very close to the shore. We saw many seals and some of them were very close to the shore. We saw many seals and some of them were very close to the shore.

24/12/19 (Wed) 5th day of the trip. We went to the beach and saw many seals. The weather was very cold. We saw many seals and some of them were very close to the shore. We saw many seals and some of them were very close to the shore. We saw many seals and some of them were very close to the shore.

(25)

BRAT base 34 cm below Z166Y base, top 3 cm below base of Z166Y. This suggests Str- is built on a rise.

BRAT is 69 cm thick NS, stands 25 cm on N side (could go deeper, base not reached) 20 cm = full height on S. Built of med. lg cobbles & a few cut blocks. No clear coursing, flat faces south. Some small cobbles and chinkers used. A rough wall. At 2.02 West of SE BRAT-SANTANA exterior corner is a single large cobble protruding out from BRAT, in front of not part of BRAT, sticks out 37 cm; is a step up, as it is lower than BRAT. BRAT not consistent in construction. At cut block, 2.48 West of SE ext. corner, is a marked change. East is small stones, West largish cobbles, on room side. West side 60 cm NS.

In SW room interior corner is a bayonetlike concentration. ~~Space~~<sup>Space</sup> exterior steps in, West wall ends, and 2 are connected by shallowly little wall, as if closing off a corner entrance. Corner is rounded as a result. Step in is 4.80 m West of SE exterior corner. Step in 35 cm, to North. Connecting wall 30 cm / 1 stone thick NS; 80 cm wide E-W. Connector does have depth, does not look like tumble.

MICK defines west side of the room.

[illegible]

on 2/25 about 2, 200 plants and 200 of TAGS  
 of (including the seed and seedling) also VI  
 got some by the 2. 2 is the 11.2 - no  
 seed all, should have been 2 and 200  
 200 more in the 2 seedling, probably  
 200 more. A 200 more in the 2 seedling  
 200 more - TAGS 22 to 200 200 200  
 200 more seedling 200 200 200  
 200 more in, TAGS more 200 200  
 200 more 200 200 200 200  
 TAGS more 200 200 200 200  
 200 more in the 2 seedling 200  
 200 more in the 2 seedling 200  
 200 more in the 2 seedling 200  
 200 more in the 2 seedling 200

2000-2001  
 2002-2003  
 2004-2005  
 2006-2007  
 2008-2009  
 2010-2011  
 2012-2013  
 2014-2015  
 2016-2017  
 2018-2019  
 2020-2021  
 2022-2023  
 2024-2025  
 2026-2027  
 2028-2029  
 2030-2031  
 2032-2033  
 2034-2035  
 2036-2037  
 2038-2039  
 2040-2041  
 2042-2043  
 2044-2045  
 2046-2047  
 2048-2049  
 2050-2051  
 2052-2053  
 2054-2055  
 2056-2057  
 2058-2059  
 2060-2061  
 2062-2063  
 2064-2065  
 2066-2067  
 2068-2069  
 2070-2071  
 2072-2073  
 2074-2075  
 2076-2077  
 2078-2079  
 2080-2081  
 2082-2083  
 2084-2085  
 2086-2087  
 2088-2089  
 2090-2091  
 2092-2093  
 2094-2095  
 2096-2097  
 2098-2099  
 2100-2101  
 2102-2103  
 2104-2105  
 2106-2107  
 2108-2109  
 2110-2111  
 2112-2113  
 2114-2115  
 2116-2117  
 2118-2119  
 2120-2121  
 2122-2123  
 2124-2125  
 2126-2127  
 2128-2129  
 2130-2131  
 2132-2133  
 2134-2135  
 2136-2137  
 2138-2139  
 2140-2141  
 2142-2143  
 2144-2145  
 2146-2147  
 2148-2149  
 2150-2151  
 2152-2153  
 2154-2155  
 2156-2157  
 2158-2159  
 2160-2161  
 2162-2163  
 2164-2165  
 2166-2167  
 2168-2169  
 2170-2171  
 2172-2173  
 2174-2175  
 2176-2177  
 2178-2179  
 2180-2181  
 2182-2183  
 2184-2185  
 2186-2187  
 2188-2189  
 2190-2191  
 2192-2193  
 2194-2195  
 2196-2197  
 2198-2199  
 2200-2201  
 2202-2203  
 2204-2205  
 2206-2207  
 2208-2209  
 2210-2211  
 2212-2213  
 2214-2215  
 2216-2217  
 2218-2219  
 2220-2221  
 2222-2223  
 2224-2225  
 2226-2227  
 2228-2229  
 2230-2231  
 2232-2233  
 2234-2235  
 2236-2237  
 2238-2239  
 2240-2241  
 2242-2243  
 2244-2245  
 2246-2247  
 2248-2249  
 2250-2251  
 2252-2253  
 2254-2255  
 2256-2257  
 2258-2259  
 2260-2261  
 2262-2263  
 2264-2265  
 2266-2267  
 2268-2269  
 2270-2271  
 2272-2273  
 2274-2275  
 2276-2277  
 2278-2279  
 2280-2281  
 2282-2283  
 2284-2285  
 2286-2287  
 2288-2289  
 2290-2291  
 2292-2293  
 2294-2295  
 2296-2297  
 2298-2299  
 2300-2301  
 2302-2303  
 2304-2305  
 2306-2307  
 2308-2309  
 2310-2311  
 2312-2313  
 2314-2315  
 2316-2317  
 2318-2319  
 2320-2321  
 2322-2323  
 2324-2325  
 2326-2327  
 2328-2329  
 2330-2331  
 2332-2333  
 2334-2335  
 2336-2337  
 2338-2339  
 2340-2341  
 2342-2343  
 2344-2345  
 2346-2347  
 2348-2349  
 2350-2351  
 2352-2353  
 2354-2355  
 2356-2357  
 2358-2359  
 2360-2361  
 2362-2363  
 2364-2365  
 2366-2367  
 2368-2369  
 2370-2371  
 2372-2373  
 2374-2375  
 2376-2377  
 2378-2379  
 2380-2381  
 2382-2383  
 2384-2385  
 2386-2387  
 2388-2389  
 2390-2391  
 2392-2393  
 2394-2395  
 2396-2397  
 2398-2399  
 2400-2401  
 2402-2403  
 2404-2405  
 2406-2407  
 2408-2409  
 2410-2411  
 2412-2413  
 2414-2415  
 2416-2417  
 2418-2419  
 2420-2421  
 2422-2423  
 2424-2425  
 2426-2427  
 2428-2429  
 2430-2431  
 2432-2433  
 2434-2435  
 2436-2437  
 2438-2439  
 2440-2441  
 2442-2443  
 2444-2445  
 2446-2447  
 2448-2449  
 2450-2451  
 2452-2453  
 2454-2455  
 2456-2457  
 2458-2459  
 2460-2461  
 2462-2463  
 2464-2465  
 2466-2467  
 2468-2469  
 2470-2471  
 2472-2473  
 2474-2475  
 2476-2477  
 2478-2479  
 2480-2481  
 2482-2483  
 2484-2485  
 2486-2487  
 2488-2489  
 2490-2491  
 2492-2493  
 2494-2495  
 2496-2497  
 2498-2499  
 2500-2501  
 2502-2503  
 2504-2505  
 2506-2507  
 2508-2509  
 2510-2511  
 2512-2513  
 2514-2515  
 2516-2517  
 2518-2519  
 2520-2521  
 2522-2523  
 2524-2525  
 2526-2527  
 2528-2529  
 2530-2531  
 2532-2533  
 2534-2535  
 2536-2537  
 2538-2539  
 2540-2541  
 2542-2543  
 2544-2545  
 2546-2547  
 2548-2549  
 2550-2551  
 2552-2553  
 2554-2555  
 2556-2557  
 2558-2559  
 2560-2561  
 2562-2563  
 2564-2565  
 2566-2567  
 2568-2569  
 2570-2571  
 2572-2573  
 2574-2575  
 2576-2577  
 2578-2579  
 2580-2581  
 2582-2583  
 258

[illegible]

24 May 1996

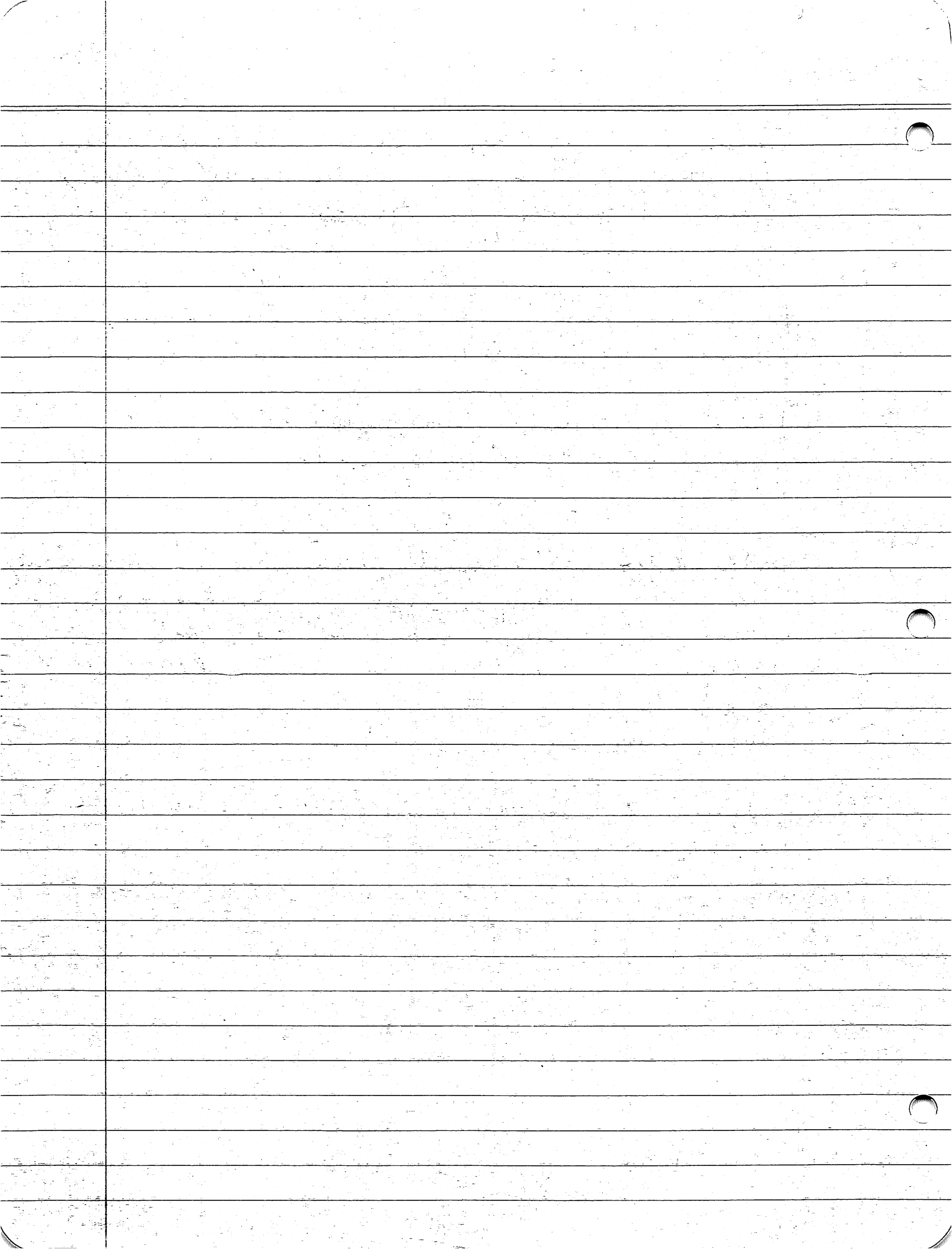
25

PICK is 73 cm EW, stands 46 cm on West face.  
Its base 12 cm or more below base of Z166Y.  
Base drops to south; ~~for~~ total drop of 17 cm.  
Ca. 30 cm high on East side. Wall similar to  
Z166Y. Large flat-sided cobbles on bottom,  
topped by med. to large stones; few chinkers.  
Larger stones on exterior rather than interior.

Top of pojarque at level of base of Z166Y.  
Fragments tilted down to south, mixed with  
sherds.

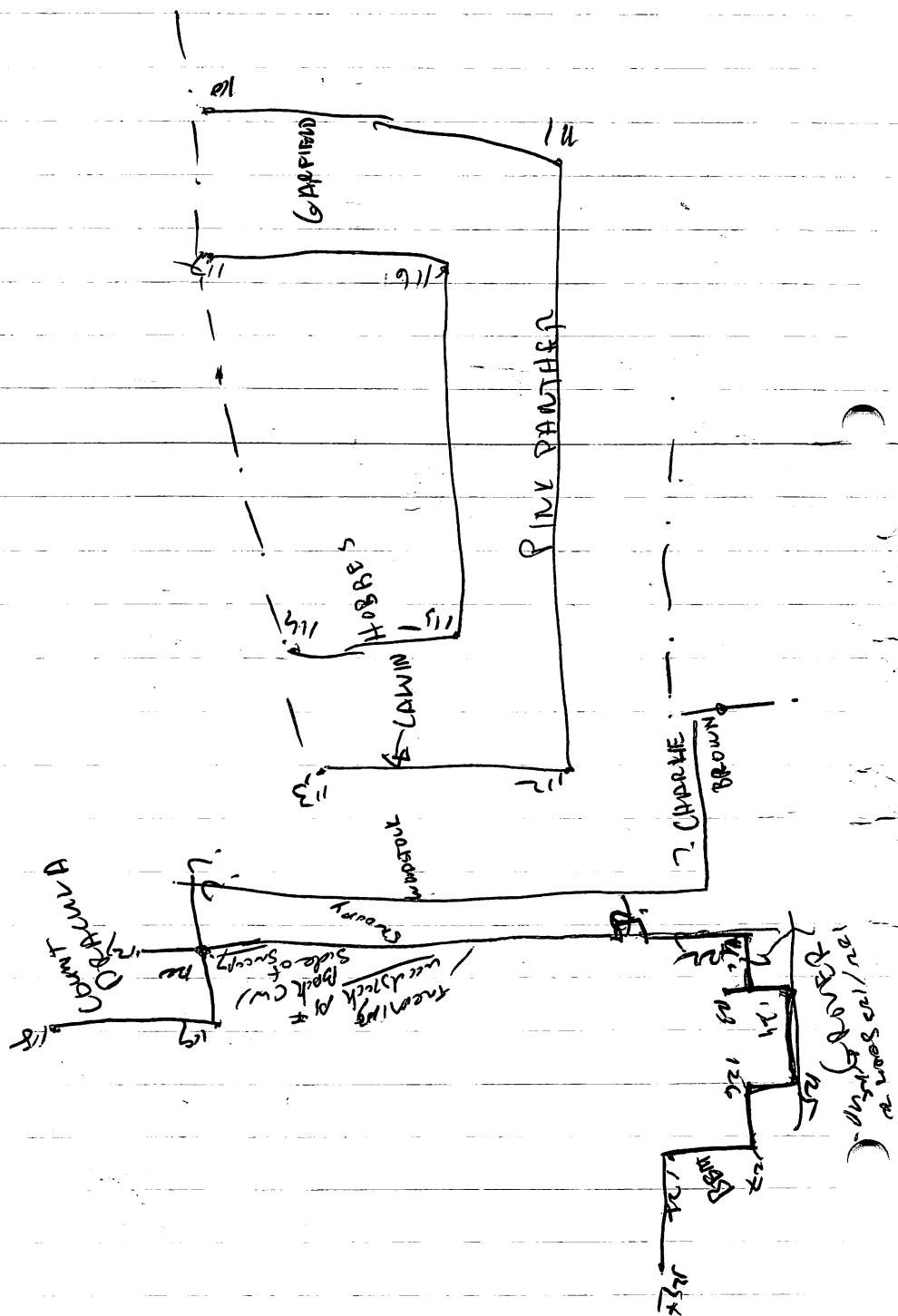
SANTANA, east wall. East base 12 cm below Z166Y <sup>base</sup>.  
EW width varies from 50-60 cm, thicker on South  
Begins just South <sup>(19 cm approx)</sup> of RUBEN. Total NS length  
2-85 on East / exterior face. Looks like Z166Y  
and PICK: 2 courses; flat side to east; few  
chinking stones.

Stone sizes will be taken later as time  
allows.

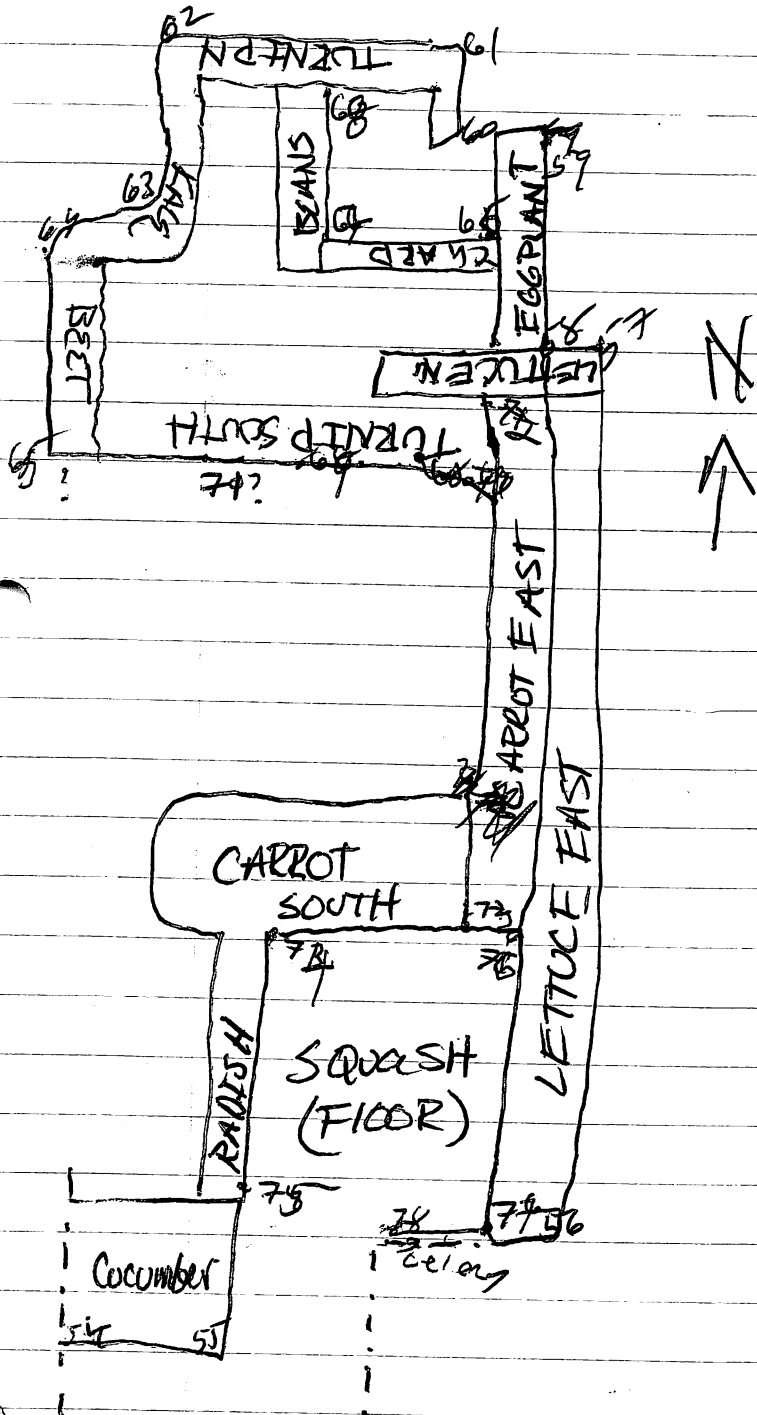






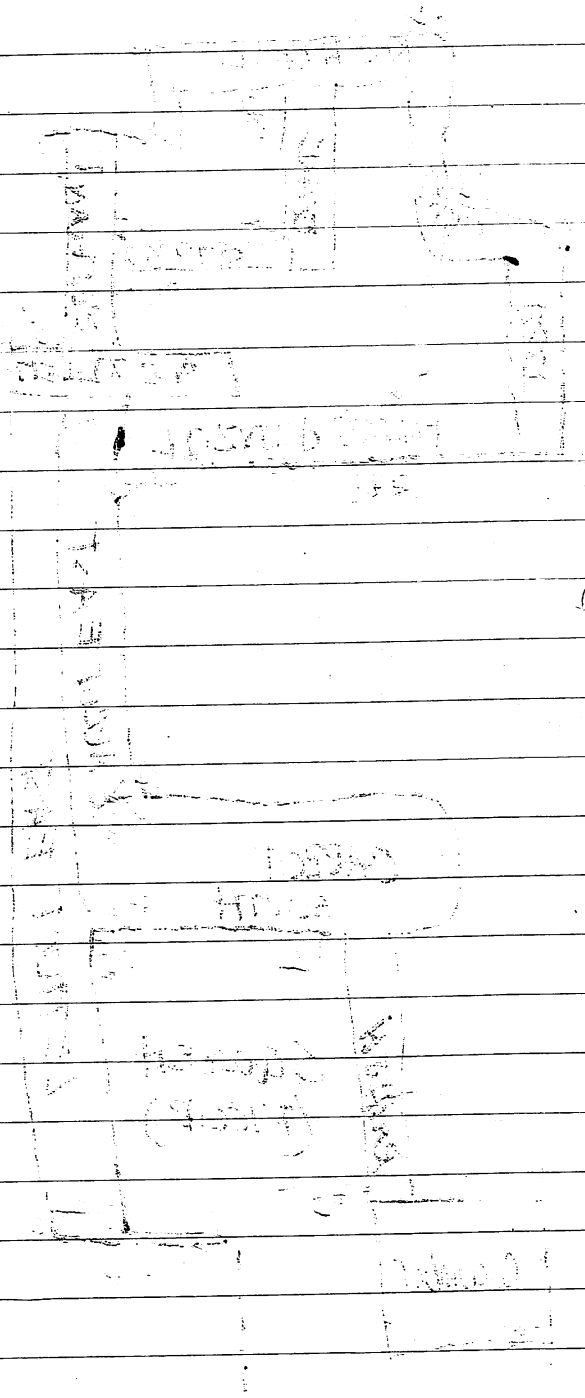


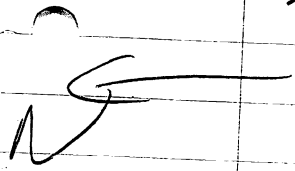
92C



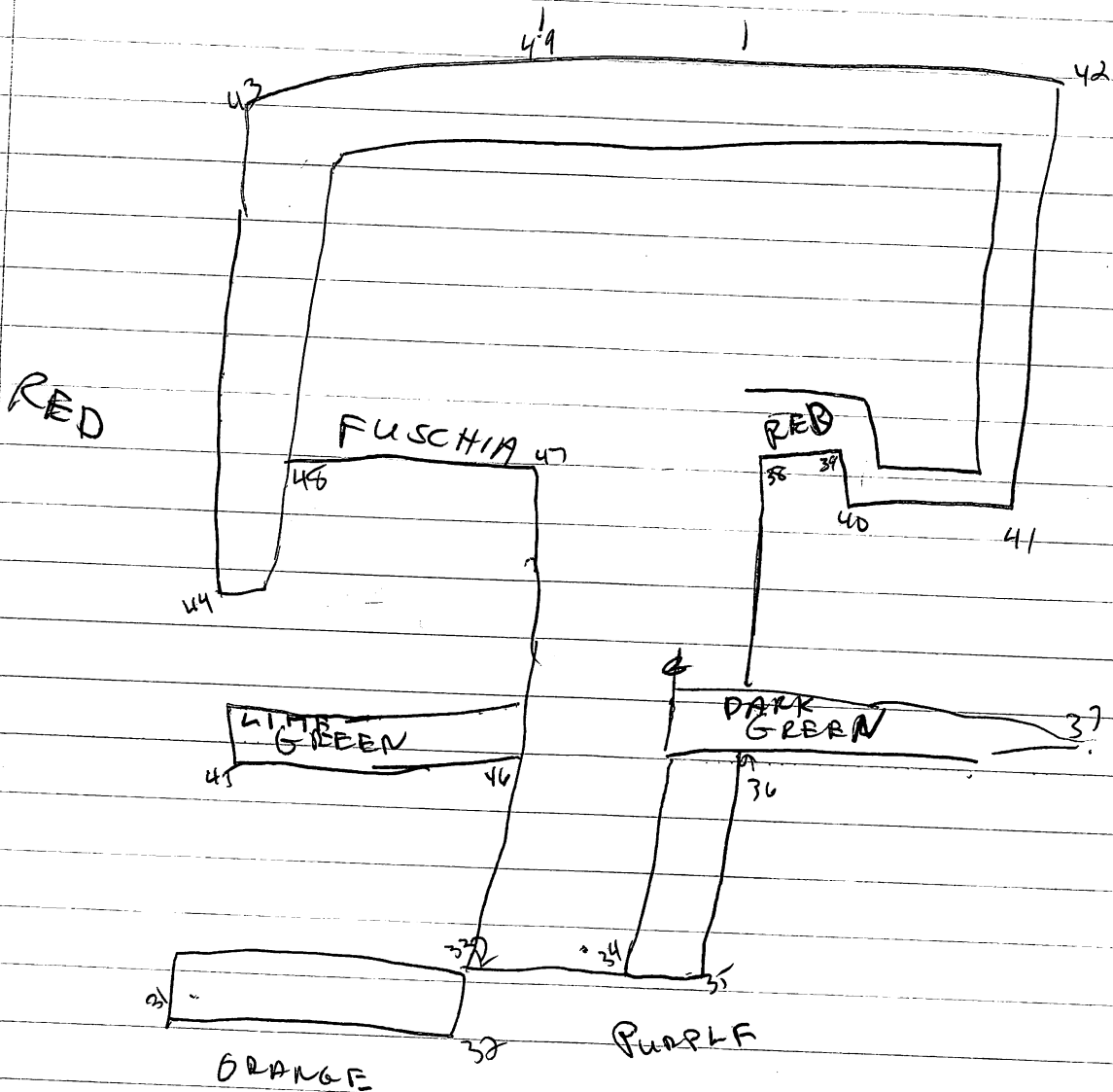
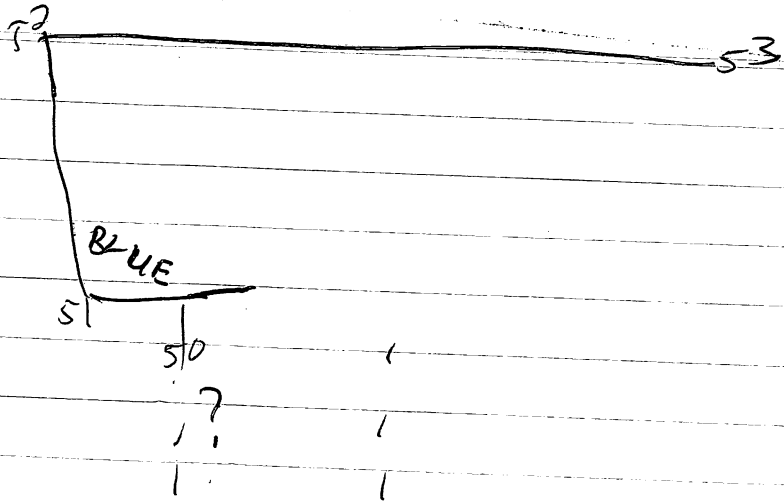
23

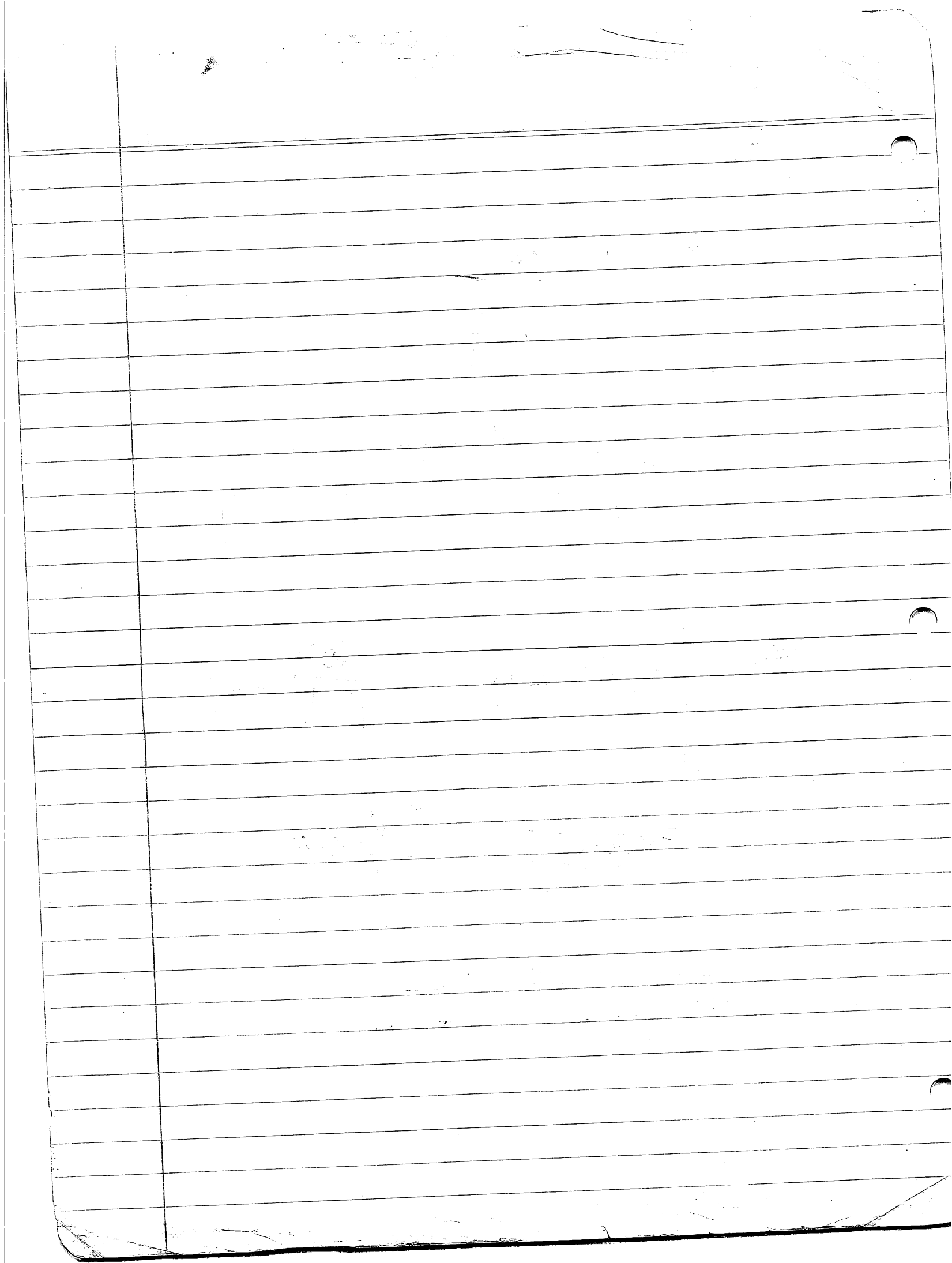
1/2  
A



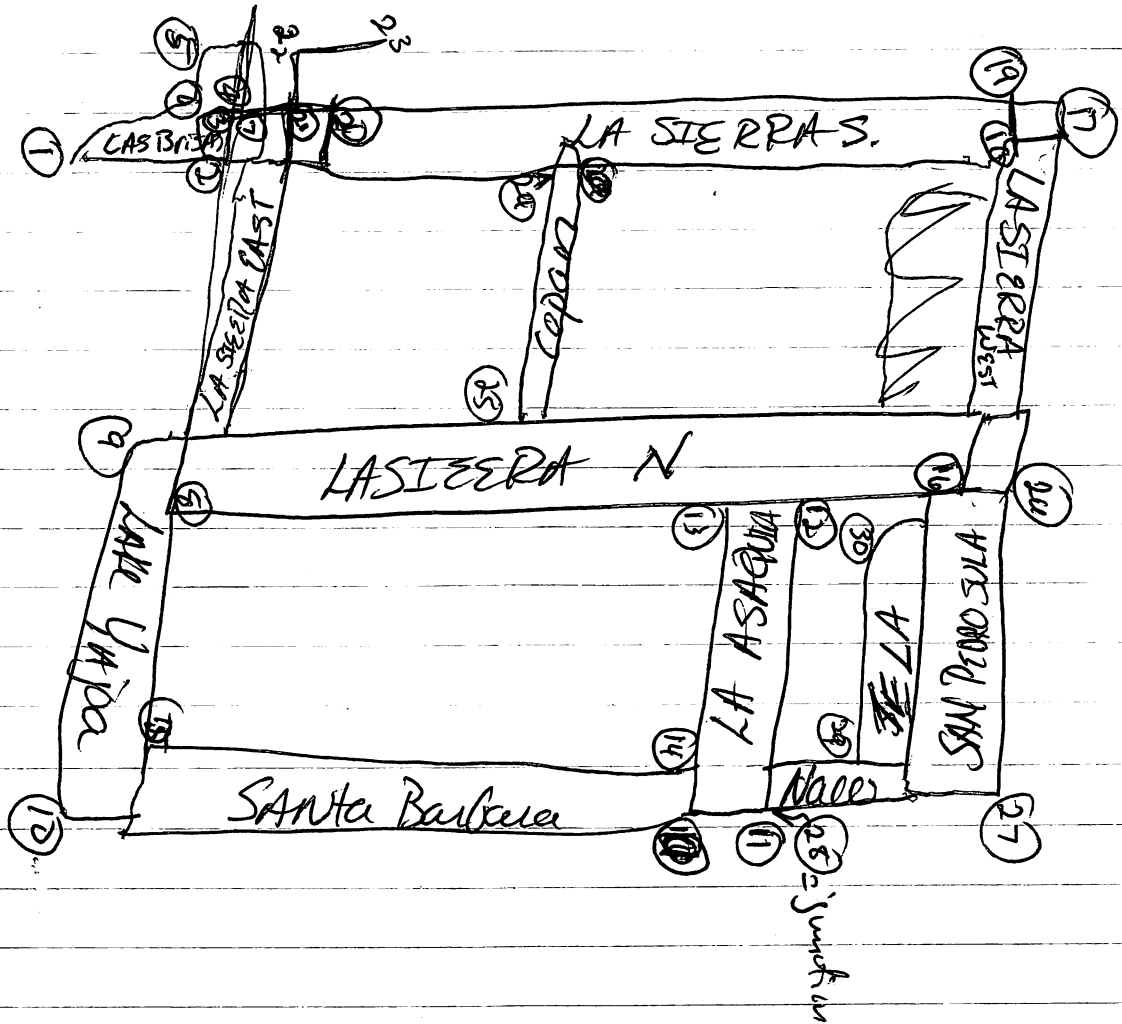


NOT TO SCALE



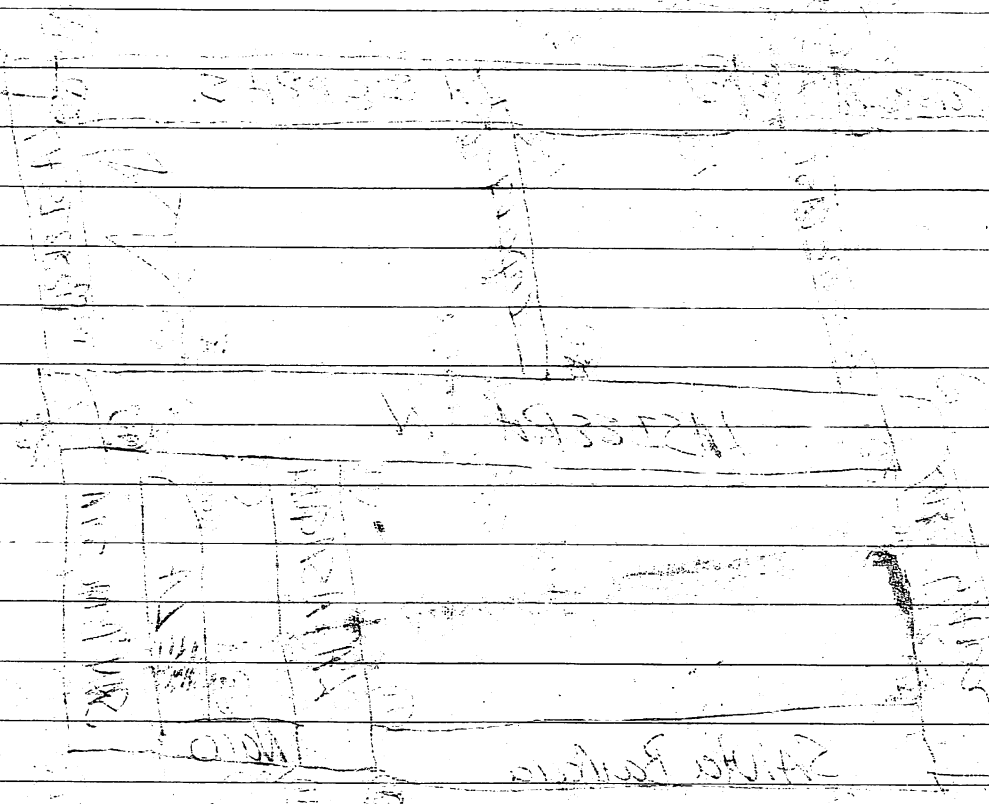


92/B.



STLS  
b

3 1/3  
STLS  
1/3



21 June 1990

## Bajareque Notes

①

### 36V0V

- 1= high grass content, oxidized
- 1= fairly flat though concave surface, oxidized; most is gray
- 1= 2 parallel stick marks, oxidized, most is gray with a few grass marks
- all have moderate texture w/ some sand and mica

### 81 B/61

- 1= piece, 2 flat sides which are perpendicular, therefore seems to be a corner or edge; the larger flat side is slightly convex; the corner edge is pinched

### 92C/78

- 1= amorphous lump, oxidized bright orange
- 1= large chunk without many signs of construction; there is one flat area as though pressed against a rock; color varies from orange on one side to gray, over a distance of 5 cm

### 39C/55

- 1= flat sided piece, not plastered, opposite side has a stick impression, at least 2 cm diameter, impression is black; piece is dense, sand temper
- 1= piece w/ stick impression 1.1 cm diam, no other marks, fairly porous
- 1= large piece with 4 parallel stick impressions, 0.8-1.2 cm wide, gray in impressions; opposite side has flat <sup>but</sup> ~~convex~~ grass impressions, as of a layer of chopped grass; also some grass temper; finally, one faint impression of stick perpendicular to clearer 4 marks
- 1= amorphous bit, lots of mica, possible stick impression

### 96B/84

- 1= amorphous bit, no clear construction marks
- 1= amorphous bit, possible flat side



- 1 = flat sided, no plaster, 1 faint stick impression
- 1 = 2 flat, perpendicular, unplastered sides
- 1 = piece with a possible split post or flat rock impression, and a stick impression, curved, as though of a bent stick
- 1 = medium-sized amorphous bit
- 1 = medium-sized item with a possible split post impression, and either a rope mark or a small stick, bent at a  $90^\circ$  angle

all pieces porous with lots of grass temper. They remind Auzé and Urban of 21 Kiln material; all also have fair amounts of fine sand, and are quite orange

816/74

- 2 = flat sided pieces, with a light orange mud plaster
  - 2 = amorphous bits, very gray, 1 small, 1 medium
  - 1 = medium paste, 2 parallel stick marks, 1 perpendicular to these; very orange
- all are fine-textured matrix, fine sand temper, moderate very fine mica content

92E/39

- 2 = amorphous pieces, medium-sized, some pores
  - 5 = flat-sided, no finishing coat; 2 have grass marks on sides opposite the flat sides; some chopped grass bits on flat sides
  - 1 = 2 narrow stick marks, 0.7 cm wide
- all very fine matrix, moderate fine sand, little mica, some grass temper

123AD/45

- 1 = med-small, 2 = medium, 1 large, all amorphous
  - 1 = small, 2 = medium, 1 = large, with stick marks, parallel, orange by marks, gray away from them; stick sizes: 1.1, 1.2, 0.8, 1.3, 0.8, 1.3, 0.9
- all pieces are sandy, heavy, some are very rounded and

eroded -- mostly the interior, non-marked pieces; temper can be very large -- one rock = 3 cm

39B/35

- 1 = small, very fine textured item with lots of mica, like figurine paste, lots of grass, parallel
- 2 = flat sided, small, 5 = small, eroded, finished, all moderately fine paste, moderate sand temper; no finishing coats; some gray, some gray-orange
- 1 = medium-sized, very sandy piece, gray to orange

39D/43

- 4 = flat sided, small to medium, lots of grass temper throughout, and on the flat surface; flat surface light orange, but dark gray at 2-3 mm; thickness 0.9 - 1.9 cm.
- 2 = medium pieces, flat sided, same as above, but flat sides burnt for up to 1 cm, lower portions orange

38R/45

- 1 = angular amorphous medium piece, dark gray and orange, very porous.
- 1 = rounded fairly amorphous piece, one sort of flat side; lots of organic temper, leaving piece porous.
- 1 = small piece, like second, but flat surface more obvious; grass marks on flat surface

39C/70

- 1 = medium-sized piece with marks of thick grass stems on one surface; gray; fine sand temper, but piece is <sup>heavy</sup>
- 1 = large, flat sided, but flat side uneven and pitted; some organic temper, mostly sand

96G/166

- 1 = medium-large piece, flat but poorly finished side; opposite

(4)

side has curved mark, curving out towards the flat side; looks like rope, rather than stick; fine matrix, but lots of temper, including high mica content; temper up to 0.5 cm

92B/24

- 1 = large piece, no mark; some grass; moderate amount small sand to 3-4 mm pebbles as temper; item is heavy
  - 1 = large piece, rounded edges, 2 parallel sticks, one larger stick perpendicular; 2 small = 1.6 cm or less, 1 large = 2.3 cm; 2 pieces of cord, parallel, wrapped around larger stick
  - 1 = med-small piece, eroded, grass marks
- all the 3 above have same clay
- 1 = flat surface, poorly finished, chopped grass on opposite side; fine matrix, moderate sand and mica temper; some grass on flat side
  - 2 = flat-sided, medium-large; flat sides not really smooth and without finishing coats; one flat side slightly convex; opposite sides have mat marks, as though pieces of mat were used in the same way bundled chopped grass is often used; some pastas at one flat-sided piece
  - 1 = med-small piece with mat impress; some paste as other flat-sided pieces
- paste essentially the same for all pieces

37A/34

3 = amorphous pieces, 1 = small, 1 = med small, 1 = medium; very high organic content; pieces are porous and light; clay itself is fine; the medium piece has a small (1.5 cm wide) portion of flat surface preserved, which is pocked and has grass marks.

21 June

(5)

92C/19

- 1 = rounded and eroded, medium-small, medium stick perpendicular to, ansplit, flat-faced stick; very fine clay, very little temper; grayed light orange color
- 1 = piece with large stick/post, at least 2.8 cm in diameter, with a 1-mm thick cord wrapped diagonally, which then goes off at an angle towards a faint mark of a smaller perpendicular stick; clay is very fine with some fine sand and lots of very fine mica, like figurine paste; item is rounded and eroded; grayed light orange
- 1 = med-large piece, no marks; fine clay with more sand than above pieces; dark orange throughout
- 1 = med-large piece, eroded, but with clear mark of 2 thin sticks bundled together; cord mark clear; sticks 0.6-0.7 cm; cord mark 1.5 mm diameter
- 1 = flat surfaced, med-large piece; flat surface is ~~grayed~~ <sup>grayed</sup>; opposite has flat chopped grass layer; fair amount sand, lots of mica, in fine matrix

123 AC/14

- all pieces have some paste; very crude and sandy, <sup>large % of inclusions</sup>
- 1 = med-large piece, parallel stick marks; sticks = 0.9 and 1.1 cm; some grass marks on opposite side
  - 5 = amorphous pieces from small to medium; no marks; some gray in centers
  - 1 = piece with flat-sided split stick, cord mark on it, and possible rope mark; gray on inside
  - 1 = flat-sided pieces with faint stick mark
  - 1 = confusing piece with 3 parallel sticks, one almost but not quite perpendicular, 1 curved item, either bent thin stick or rope, a second curved arc, ditto, and a possible flat rock impression; reminds Aussec and Urban of given pieces

36J/06

- 4 = amorphous with grass layer marks; both fine-textured matrix, moderate to small amount temper
- 4 = amorphous pieces, a few organic bits; mostly as first above
- 2 = pieces with stick marks only, possible cord marks
- 1 = flat-sided piece, not very smooth, with remnants of finishing coat; grass layer on opposite side, burnt; piece is 1.6 cm thick
- 1 = flat-sided, but not very smooth; finishing coat rougher than item itself, with grass and more sand; coating = 0.3 cm thick; opposite side is grass layer; piece varies from 2.3 - 3.2 cm, including coat

92B/62

- 1 = eroded med-large piece, one longish stick (2.5 cm), one cord mark (0.15 cm); grass, chopped, as temper; also moderate fine mica and some sand
- 1 = confusing piece with one ~~small~~ clear stick mark, a possible ~~stick~~ stone marks

112 CE/01

- 12 = piece with curved (concave) flat surface, no other construction marks; very sandy, with temper up to 5 mm, lots of small mica, giving a sparkly appearance

98B/65

- 1 = eroded amorphous piece, fine matrix, moderate amount temper, one rock 2.3 cm across; no construction marks

123 AR/03

- 1 = piece with 2 or 3 faint stick marks, gray and orange color
- 1 = angular amorphous chunk
- both have very coarse paste, high quantities sand and mica

⑦

816/53

- 3 = med-small, 2 = medium, 1 = med-large; 1 = large; all same paste: fine matrix, moderate amount sand, fine, lots of fine mica, some pebbles up to 5 mm, all are orange with a few gray areas; few clear construction marks, but all have grass layer impressions
- 1 = med-large piece, paste as above; grass layer on one side, impression of flat side of split stick; 2 cord marks leading up to flat stick
- 2 = flat-sided pieces, fairly well finished, no finishing coat; grass layer on opposite side; paste as above
- 1 = flat-sided piece, as above; paste as above; 2 possible stick marks; possible remnants of lighter orange finishing coat
- 1 = flat-sided piece, as above; paste as above; 2 parallel stick marks
- 2 = flat-sided; light orange finishing coats with lots of mica; paste as above; no other marks
- 1 = very large piece, 2 small parallel sticks, parallel to one large post, sticks 1.0 cm, post 3.5 cm; several cord marks; paste and color as above; possible flat side, not well finished, grass marks
- 2 = large pieces with curved stick impressions; opposite sides have grass layer that is curved; the curved sticks ~~do~~ run parallel to one another and do not seem to join on one; on the other, 2 parallel sticks seem to be going to intersect 2 other parallel sticks, all curved

920/82

- 2 = medium (1) and med-large, eroded, amorphous pieces; chopped grass and possible rock impressions; possible cord impressions
- 1 = large piece, possible flat side, very pocked

1 = medium piece, grass layers both sides  
all the above have same paste: fine matrix, high proportion sand temper, some high mica.

1 = flat-sided piece with thick (2 mm) finishing coat of fannish, very fine clay; surface under coating has chopped grass marks; piece is 3.1 cm thick

1 = large piece with parallel sticks tied together with thin cords in a fashion different from the other: there is more than one wrap on most sticks, and cords cross in an "X" in 2 places; sticks have fine parallel lines on their surfaces; cords are 1.0 to 2.0 mm; opposite side seems lumpy and unfinished; piece is 4.5 cm thick; sticks are 6.7-1.0

QC/93

2 = amorphous, rounded, possible rock impressions; 1 = small, 1 = large

1 = amorphous, rounded, with grass layer impressions; medium-size

1 = amorphous, rounded, with small stick impressions, or very thick grass, 3-8 mm, medium

1 = medium large, rounded, flat side, one faint stick impression

1 = large, flat-sided, with fairly well finished surface; 2 small stick impressions, parallel, running perpendicular to the stick 1 cm wide; on the large stick are crossed cords, in "X", and another cord mark; cords are 1 mm

1 = flat-sided, med-large, uncoated; no other marks

1 = med-small, flat-sided, at least 2 finishing coats; chopped grass under the finishing coats

All pieces have same paste: fine textured, little temper; what there is is sand and fine mica (more mica than sand); soft

⑨

123A M/10

2 = small pieces with twig and thick grass impressions  
15 = amorphous pieces, no marks, very small (2 cm)  
to med-large

1 = rounded piece, possible flat side, parallel stick marks; one seems to be a split stick half, the end portion

3 = pieces with perpendicular stick marks (2 = medium, 1 = large); some grass marks, possible cord marks; one stick may be end piece;  
sticks are 1.4, 1.8, 2.4 cm

1 = flat sided, but poorly finished piece, parallel stick marks 0.2 - 1.3 cm diameter

2 = pieces with parallel stick marks, no other impressions, each with 1 1/2 stick

3 = pieces of stick impressions; eroded; medium sized  
~~2 = pieces with~~

sticks usually have fine parallel lines

all have same paste: matrix seems fine, but is overwhelmed by large quantities of sand and mica

all pieces are both orange and gray; only one small piece is completely burnt

38A/63

Recommission - 1 rock, masquerading as bajareque

92A/54

1 = confusing large piece, slightly rounded on edges, possible stick and small rock impression with no clear mutual orientations; very fine clay with little or no temper



Small = 4 cm x less  
med-small = 4-5-6  
med = 6-7-

med large = ca 9-10 (10)  
large = 10-15  
very large = > 15

- 2 = rounded, eroded small pieces with a few chopped grass marks; fine clay with mica temper, some sand
- 1 = eroded, round small piece, no marks; fine clay w/ mica & sand
- 1 = angular medium piece, porous; fine clay with sand and mica
- 1 = small piece with stick impression
- 1 = flat-sided large item, well-finished but uncoated; opposite side has parallel stick impressions; sticks are ca 0.8 cm; lots of mica in paste

92C/85

- 2 = small and medium sized amorphous pieces; fine clay little or no temper
- 1 = medium sized, possible stone impression/possible split post flat side; some paste
- 1 = large piece with flat but pitted side; a few grass bits; eroded edges; some paste
- 2 = flat-sided piece, grass marks on flat face; some paste
- 1 = flat-sided piece; grass marks on face, one 3 cm wide "parallel stick impressions, possible cord mark; sticks = 1.5 and 1.8 cm; clay as above but with more mica
- 2 = flat pieces coated with red and possibly white finishing coats; paste as above, no mica; grass marks under coating
- 1 = rounded "corner" piece; thin red wash on finished surface; some paste, but seems more micaceous on surface, possibly due to inadvertent concentration

386/38

- 1 piece, <sup>medium</sup> burnt; 1 partial stick impression; fine paste, little temper

79B/40

- 1 = amorphous med-small, 2 possible stick impressions; lots of fine sand temper

(16)

386/29

- 4 = amorphous pieces, small to med-small; all have grass temper
- 7 = pieces, med-small to, mostly, medium; all look as though they have been between rats, and most have triangular cross-sections; all have lots of chopped grass, little sand, moderate mica
- 3 = flat-sided pieces (1 = small, 1 = med-small, 1 = medium; flat sides, packed from grass; lots of grass temper paste as above
- 1 = medium piece of stone impression and 1/2 large split post/stick impression
- 1 = possible corner; medium size; 2 flat sides running perpendicular; grass marks on flat sides; lots of grass temper; paste as above
- 1 = large piece; flat side, less grass packing than above; 2 possible split post impressions. a lot of grass temper; interior of item burnt; paste as above
- Porosity of items reminiscent of oven material.

362/53

- 1 = med-large very flat item, surface ridged, from par smoothing, though little grass-packing; reverse is packed grass, largely running perpendicular, does not seem chopped; piece = 0.9 x 1.8 cm wide
- 1 = med-small piece, like above, paste of both fine clay; very little temper, that mostly mica
- 1 = piece that seems like an exterior, but is poorly finished and irregular with lots of grass marks; there is packed grass, and is gray; medium size
- 1 = med-large piece; one side is packed grass, and looks like grass packed over the stick framework
- 1 = confusing piece with one side of packed grass with the sticks passing behind the grass (i.e.,

(12)

grass is packed up against the sticks); other side has broad flat to curved marks which look like ricks, but also seem to have looking cords; part of piece is burnt; grass includes broad leaves (ca 1 cm) as well as stems.

96B/17

2 piles (formerly 1); grass; very fine clay, no temper, like the ~~the~~ finest ~~figured~~ clay

1 = amorphous small piece, a few grass marks, paste as above.

following 3 have same paste: fine matrix, moderate sand and mica content.

3 = 1 small, 2 medium, amorphous; lots of grass marks.

37B/14

1 = med-small; very fine clay, almost no temper; one stick mark with possible cord marks; item is rounded and eroded.

39C/16

1 = small; clear stick, ca. 0.8 cm diameter; flat sh; fine paste but quantity of temper makes it feel sandy.  
2 = flat piece, med small; 2 layers of clay coating with lots of mica; reverse has impression of a heavy textile; saved

37B/16

1 = eroded amorphous pit; no marks; fine matrix with lots of fine sand.

2 = med-large item; 2 clear parallel stick impressions ca. 1.5 cm; one stick running perpendicular with crossed looking inward 2 mm wide; item gritty from high sand content in fine matrix.

(15)

79B/62

- 1 = gritty, medium, rounded, amorphous piece; grass marks; one stone 1 cm long
- 2 = flat sided small piece, grass marks; paste as above
- 1 = med-small with parallel stick marks, ~~0.8 x 0.9~~ <sup>0.8 x 0.9</sup> cm; paste as above
- 3 = different paste, small piece, amorphous; 1 ho, possible stick impression and possible flat side; fine paste, little temper, distinct from other pieces

123AP/14

- 1 = med very gritty amorphous piece; lots of sand, fair amount of mica

39C/66

- 1 = medium ~~size~~ size. several parallel stick marks approx 1.2 cm; possible tooling; some grass temper, including one lat bent around two of the sticks; paste is fine textured, with moderate sand and some mica.
- 1 = flat sided but curved; small; 3 stick impressions on ~~reverse~~; paste as above but much more mica

386/28

- 1 = amorphous piece, rather gritty, bright orange; no construction marks

39A/21

- 1 = amorphous, rounded medium item, fine clay with lots of mica like figurine clay; no construction marks
- 1 = med-small; rock impression, possible grass marks; clay as above, but more sand
- 1 = small piece, probable split stick impression; paste like second item
- 1 = rounded possible "corner" piece, after grass marks; same paste as #2 and #3

12 Very large piece with a small stick and flat sided split post; paste as above, but with a few stones as large as 2 cm.

13 piece with clear ~~the~~ parallel sticks with fine lines on them; fine clay with much mica; less sand than other pieces.

# decommission

112C/01	8	rocks, non-cultural, discarded
112P/01	1	rock, non-cultural, discarded
112H/02	12	rocks, non-cultural, discarded
112L/01	20	" , " " , " "
112L/01	3	discarded / ended shreds
112L/02	1	rock, non-cultural, discarded
112G/01	10	" , " " , "
112T/01	1	" , " " , "
112E/01	3	" , " " , "
112AA/01	1	" , " " , "
112AA/02	1	" , " " , "
112AB/01	2	" " " , "
	2	ended / discarded shreds
112A12/01	5	discarded, non-cultural, rocks
112AL/02	1	" , " " , "
112BP/01	2	" , " " , "
112BY/01	1	" , " " , "
112BY/02	7	" " " " "
	1	ended / discarded shreds

22 Nov 1951

11/25/51 8 10/2/51 11/25/51 8 10/2/51

11/25/51 1 10/2/51 11/25/51 1 10/2/51

11/25/51 6 10/2/51 11/25/51 6 10/2/51

11/25/51 5 10/2/51 11/25/51 5 10/2/51

11/25/51 2 10/2/51 11/25/51 2 10/2/51

11/25/51 1 10/2/51 11/25/51 1 10/2/51

11/25/51 1 10/2/51 11/25/51 1 10/2/51

11/25/51 1 10/2/51 11/25/51 1 10/2/51

11/25/51 2 10/2/51 11/25/51 2 10/2/51

11/25/51 1 10/2/51 11/25/51 1 10/2/51

11/25/51 1 10/2/51 11/25/51 1 10/2/51

11/25/51 5 10/2/51 11/25/51 5 10/2/51

11/25/51 4 10/2/51 11/25/51 4 10/2/51

11/25/51 2 10/2/51 11/25/51 2 10/2/51

11/25/51 1 10/2/51 11/25/51 1 10/2/51

11/25/51 3 10/2/51 11/25/51 3 10/2/51

11/25/51 1 10/2/51 11/25/51 1 10/2/51

11/25/51 7 10/2/51 11/25/51 7 10/2/51

11/25/51 1 10/2/51 11/25/51 1 10/2/51

22 June 1990

38C/81

- 12 = amorphous, rounded/eroded pieces (5 = small; 5 = med-small; 2 = medium); fine matrix; moderate to small amount sand, little mica; some pebbles up to 1 cm
- 1 = rounded, medium, ten. marks of grass layer; paste as above
- 40 = pieces with parallel stick marks; 1 = small, 1 = med-large; med-large piece has cord marks; 1 stick seems split
- 1 = flat-sided item; no finish coat; medium
- 1 = flat-sided, medium; large grass mark; opposite side has furrow marks
- 2 = examples with two sets of parallel stick marks, set at right angles; 1 = medium; 1 = large; large piece has marks of rock ca 3 cm across
- 3 = example with three sets of stick marks: 2 are perpendicular to each other, the third runs at an angle to both.
- all above have some paste; most are dull orange, some have gray areas, but none are burnt

817/14

- 13 = amorphous, somewhat rounded pieces, no construction marks  
7 = small; 6 = medium
- 2 = examples with grass layer impressions; 1 = med-small; 1 = med-large
- 1 = large example with grass layer one side, stick marks as lashing other; stick marks indistinct, cord looks like 4 vines, cord = 0.15 - 0.3 cm
- 1 = med-small piece with two large stick impressions and a cord mark = 0.4 cm
- 1 = flat-sided item, rough surface, some grass opposite; med-small
- 1 = very small; 6 = small; 1 = med-small; 2 = medium; 1 = med-large; all have flat, well-finished side with several thin finishing coats of fine clay
- all pastes fine matrix, moderate amount sand, little mica



84A/23

3 = small, rounded, eroded pieces, no construction marks, a very little grass; fine matrix, little sand and mica

84A/51

1 = amorphous small item, not much eroded; grass marks; fine matrix, almost no temper

84B/32

2 = small, amorphous, eroded; little visible temper but they feel sandy

\* 84F/16

1 = eroded shard, discarded

1 = small eroded bit, no marks; ~~some~~ moderate sand and mica

\* 19P/36

1 = shard, eroded, discarded

1 = flat item, small; eroded finish coat of fine clay; opposite is some grass

120AJ/02

1 = medium, totally rounded item; no marks; deep orange; very sandy

81B/65

1 = medium; possible large rock impression; grass, Chopped fine, sand (moderate), lots of mica

81F/54

3 = small; 1 = med-small; 1 = med pieces; all have grass (layer impression), with grass going at various angles; pinkish orange; fine matrix, moderate sand some mica; pieces seem porous

3 = med-small items with possible thin plaster finish; 2 are corner pieces with right angle turns; 1 = flat bit with irregular surface but, if these also have a rounded edge finish

22 June 1990

(3)

84E/14

- 3 = small pieces, amorphous, a little grass
  - 3 = (1 med-small, 2 medium) examples, flat sides, smooth despite crude paste
  - 1 = large piece; one clear flat side, probable perpendicular **flat** side; one stick mark is parallel to large flat side, but would intersect possible side at an angle
- all have same paste: fine matrix, fairly large sand percentage, small-moderate mica; sand clear on flat surfaces

120AA/27

- 8 = very small, eroded, gross temper
  - 7 = small 1 = medium
  - 1 = very small, flat sides, no finish coat
  - 1 = medium, as above, has possible rock or flat-sided split post marks
  - 1 = large, faint stick marks, rock or large split post mark
- all eroded, rounded

81E/54

- 1 = eroded, medium, lots of gross temper; piece now porous
- 1 = item with gross layer marks, gross chopped, and randomly oriented
- 1 = interior piece with 1 ~~clear~~ <sup>clear</sup> stick mark; parallel lines on stick
- 1 = flat side; finishing coat rather gritty, very high mica content, leaving surface rough but sparkly; grass under finish coat; opposite are three stick marks with thin parallel lines; size approx 1.1 cm
- 1 = large piece; flat side with thin finish coat; thinner stick seems split -- profile is half-circle; perpendicular is a large post at least 2.5 cm with

④

cord / rope marks 0.3 - 0.6 cm across; the last mark is parallel to the first and also seems to be split

84E/16

1 = medium, rounded item, grass marks few and not limited to one side

1 = small, flat side, thin brown coat of fine clay

2 = med-small, flat-sided; no brown

1 = large, flat side, but curved, parallel striations as if from wiping on one side; no brown; opposite side is grass layer; grass mostly long piece, parallel orientation, with grass kept underneath; item varies from 1.1 to 3 cm in thickness

all parts same: fine matrix, moderate sand, fair mica - surfaces have some sparkle no burning, very little graying

84A/27

~~1 = small~~; ~~1 = med-small~~; 1 = large; all amorphous, angular, a few pebble marks (3-5 cm) somewhat porous without grass temper, large item burnt one side

1 = med-small, 2 parallel stick marks, vert angular and chunky

2 = small, flat sided, a little grass temper, grass marks on flat side

2 = pieces with curved edges / "corners"

1 = unwatered, grass opposite, flat side also burnt

1 = several layers fine clay with lots of mica

22 June

(5)

120 AH/47

4 = very small; 3 = small; 4 = medium; all amorphous,  
with a few grass marks; some gray to black  
1 = flat side, rough; stick marks opposite  
1 = stick and rot marks; ~~was~~ medium  
1 = split stick mark; medium  
1 = small; 2 = mid-small; 4 = medium; all with  
parallel stick marks; sticks = 0.55 - 1.2 cm  
all have med-fine matrix, fairly high mica, moderate  
sand

81 C/39

3 = 1 small, 1 mid-small, 1 medium; all amorphous  
no marks  
1 = possible flat side; grass bases opposite  
1 = flat side with knifing coat; possible very  
thin red wash; clay very orange  
all fairly sandy, moderate mica

