

2008

PVN-001-Schortman-Field Notes-2008

Edward Schortman

Kenyon College, schortma@kenyon.edu

Follow this and additional works at: <https://digital.kenyon.edu/honduras>

 Part of the Archaeological Anthropology Commons

Recommended Citation

Schortman, Edward, "PVN-001-Schortman-Field Notes-2008" (2008). *Four Valleys Archive*. Paper 6373.
<https://digital.kenyon.edu/honduras/6373>

This Field Notes is brought to you for free and open access by the Anthropology at Digital Kenyon: Research, Scholarship, and Creative Exchange. It has been accepted for inclusion in Four Valleys Archive by an authorized administrator of Digital Kenyon: Research, Scholarship, and Creative Exchange. For more information, please contact noltj@kenyon.edu.

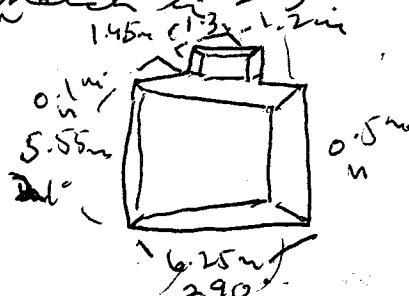
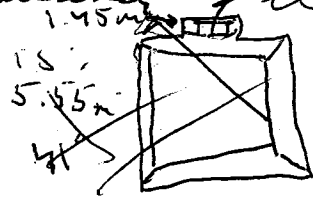
4/1/08

Site 614 - Dug final meter on Zone 2 str.
in the rock today. 36 trench (Subp. 614 B, I
think) covers on the platform from the S. It
runs (in E-W. by 4 or 5--S. 7 by stopped short
of the S. wall, northward, I believe, a line of
fallen stone for the wall from which they click
Constructer here, connects almost entirely of
tuff (perhaps 1 rubble called) and seems to
be fairly well preserved. A band of the tuff
stones look very roughly forced but
most are pretty craggy.

Site soil cut here is a very fine-textured,
hard-compacted, gray-brown clay with some
white flecks in it. This earth seems to underlie
constructer, though I'll have to see what we
have after exposing the S. basal wall. Overlying
this hard-packed clay is a lighter version
of the same soil (about 0.16m thick). That is
fine textured but not as hard-compacted as
its underlying counterpart. It's in the top most
most 0.16m that most of what appears to be buried
recesses is located. In fact, the top-most
soil contains numerous small rocks (ca 3cm in
diameter and less). Not all of these stones necessarily
come from tuff but may have arrived due
to natural clastic process. ~~Soil~~

Site orientation of the trench is 23°

Site str



4/1/08

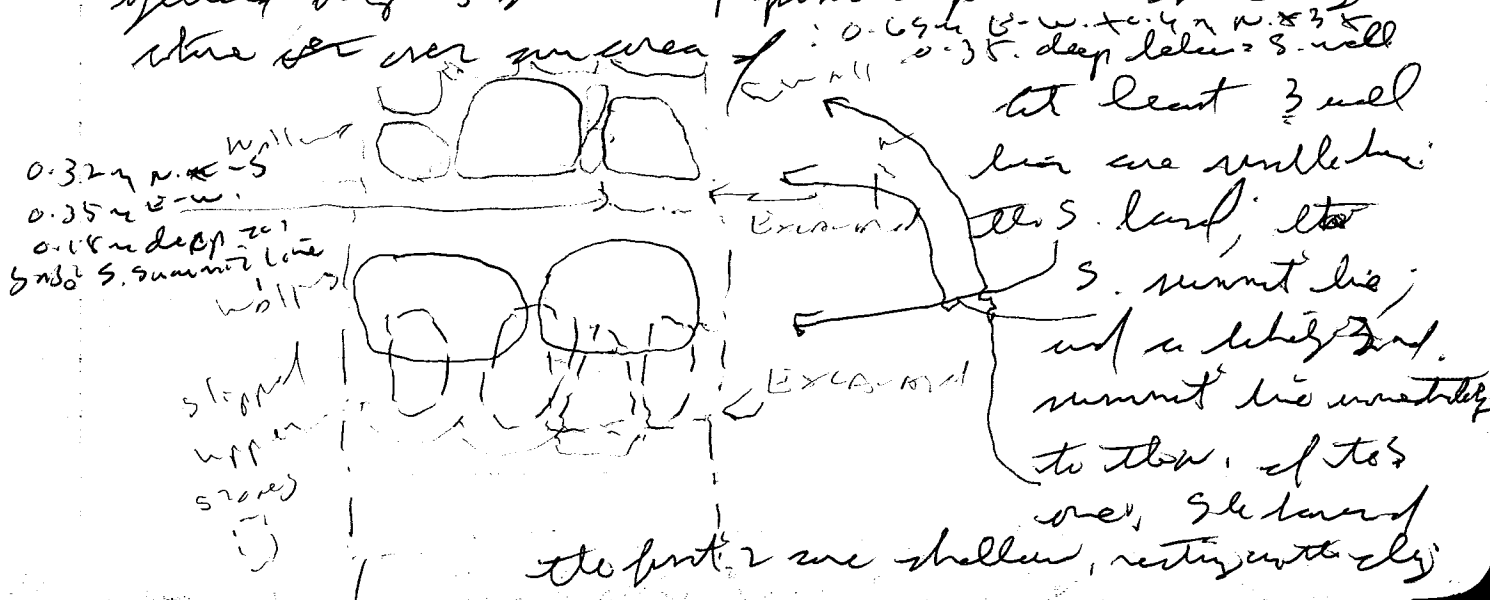
pos-01-02

Site 614 (cont.) - Had a pair of wooden cut in
front of the S. wall and now for a short distance in
front (S.) of the apparent summit wall. The S.
wall is only 1 surviving stone deep though there are
clearly at least 1 course on top of this level
which had fallen S. in course, thus
creating the 2nd false S. wall.

If there is more than 1 str. here I don't
rec'd them anymore. The 1 clear, rubble building
rests on the upper edge of a low (ca. 0.4m high) terrace
overlooking the gubrudu to the E. The str. actually
rests over the river, being ca. 0.5m high on
the E and only about 0.1m high on the W. A
regular (ca. 0.1m high) projection extends ca. 1.3m
to the N of the N. basal wall, ~~ca. 1/2~~ at its
appropriate mid-point.

The architecture seems to rest directly on
the underlying clay, both the S. basal & S.
summit walls. It is in the overlying, rather soft
that outcrops are found in some frequency.

Excavation today in the underlying clay
yielded only 3 sherd + 1 possible possible masonry
stone set over an area of



4/1/08

Site 614 (cont) -- Correction - the underlying clay is a dark brown.

Wall	Ht.	W.	Top.	Bot.	Angle	Remarks
S. Basal	0.25m 0.28	0.38m	0.28m	0.53m	295°	unshaped ruff
S. Summit	0.24m	0.3m	0.2m	0.44m	295°	roughly shaped ruff
2nd Summit (NW)	0.08m ⁺	0.22m	0.32m	0.44 ⁺	295°	roughly shaped ruff
(Base not found)						

Rocks

<u>wall</u>	Smallest	Longest.	Junk ruff is visible
2nd Summit	0.26m E-W. 0.2m N-S. 0.08m N.E. (+)	0.2m E-W 0.18m N-S 0.18m N.E. (+).	Bases not found
<u>S. Summit</u>	0.05m E-W. 0.1m N-S 0.05m N.E.	0.33m E-W - only ruff visible 0.3m N-S 0.24m N.E.	

Wall	Thick	Notes
S. Basal	0.07m E-W	0.32m E-W
	0.05m N-S	0.38m N-S
	0.04m N-E	0.25m N-E
cobble	0.05m E-W	0.2m E-W
	0.06m N-S	0.44m N-S
	0.06m N-E	0.16m N-E

Mostly roughly shaped ruff; a few unshaped cobbles

as let look like we are down about 0.9m S of the S. basal line - try to find some more - that well. Picking over it we see rocks that may form a ruffwell ca. 0.36m S of the S. face of the S. basal

4/8/08

PO8-01-

ZAC's sto. (ltr. 202-49). Basically, it appears to have been a platform delimited by visible basal walls - TEARS, Whitman, KEARS, and Shelley on the S, E, N, & W, respectively. Whitman may, in fact, be an addition to VIRGIL which could well be an earlier E. basal floor - VIRGIL common well w/ KEARS on the N. and plausibly well w/ TEARS on the S. and starts ca 0.17m above the fill backing Whitman on the W. Whitman would, then, be a ca 0.55m wide expansion of VIRGIL + the sto. to the E.

Entrance to the summit seems to have been achieved by stepping up over Coleridge up on to KEARS and then into a summit space delimited by Byron and Bukowski on the west & E + W, in turn. There walls are very shelled + about Shelley, VIRGIL and Shelley respectively.

ELL107 lies ca 0.37m S. of KEARS and runs below Byron + Bukowski and to a depth slightly above the base of KEARS. It is likely that ELL107 was built about the same time as the original basal platform. A burnt scum floor sits ELL107 and ^{with below} Byron / Bukowski. About 0.03m thick, this floor also sits at S. side of KEARS. The behavioral significance of the floor, ^{with 107 are} is unclear but it may be that ELL107 defined the S. side of an area intended for burning, with KEARS delimiting the N. flank. KEARS is a substantial wall about 0.35m wide N-S.

4/8/08 (cont.)

108-01-07

Zoe's str. (lth. 202-49) (cont.). The summit consists of a relatively large, gray, more defined by the back side of YEATS, VIRGIL, KEATS, and SHELLY. Off-center - in fact, to the S. + directly behind Byron / Harold, is a construction consisting of at least 5 cut tuff blocks most of which are themselves cracked. = FR-57. ~~FR-57~~ FR-57 about VIRGIL on the E. + extends slightly (ca. 0.2 m) W of the Byron. FR-57 was probably not even up the earlier summit floor. It would, at most, have stood ca. 0.1 m tall.

NOTE - Byron ^{thin, irregular} Byron ~~Byron~~ Byron block in the N.E. corner of the summit, Harold is the S. wall while the N.E. side are defined by YEATS and VIRGIL, respectively. Bukowski, in turn, is the E. perimeter line of a comparable stone block bordered by CHARLES on the S + YEATS and SHELLY on the N. + W, respectively. Bukowski / Charles is in the N. corner of the summit near

CHARLES is a thin, shallow line (1 stone high + only that essentially) breaks FR-57 running N.-S. across all but the N. - most end of that unit. This is a very late construction. ^{ALT} ALFRED and TEAGAN, an oval feature lying immediately W of FR-57. Stone is same as that about ALT. or rehab - the whole summit was apparently filled w/ comparably small stones + ALT may just be a fortunately preserved remnant of that fill. CHARLES seems legitimate.

The space between FR-57 + VIRGIL filled w/ stones. Ends units which HAROLD the top of which was slightly above the line of YEATS and SHELLY which have

4/8/08

pos-01-

Zr's str. (str. 202-49) (cont.): similar relationship
 of ~~the~~ HERMS. SAPPHIRE seems to be the S. end
 of a substantial (0.58 m across) wall that is
 1 store high (apparently). (0.2 m tall at west).

HOMER consists of 5 rocks -- 4 cobbles + 1 tuff
 stone, unshaped) set together but w/o making a
 clear wall. 1 store high.

A patch of burnt earth measuring 20 m
 NB-SW by 0.12 m NW-SE. lies 40 m N. of HERMS
 and 0.62 m E. of Colony. Probably points to localized
 of intense, burning here at 1 point - no construction
 is associated w/ the patch.

All walls seem to be built of a mix of
 cobbles + tuff w/ cobbles dominating except in
Press which is all tuff. West of the tuff wall
 however, at least roughly sloped and cobbles in
 wall in tuff have the flat face oriented
 outwards.

PLANT -- looks like it was thought to be a
 stone floor with SW corner cover - consists of but
 1 rock.

It looks like the amount of rocks lying E of
WHITMAN were more notably 1.95 m ^S from
WHITMAN's NW corner. It could be that there
 was a date, canal construction spread to
WHITMAN at this point, continuing for at
 least 1.8 m to the structure in SE corner - of further
 of WHITMAN and YCATS. It may be a wall that
 is ~~as far as~~ ^{as far as} 1 m E-W. and stops where it ends on
 the S. is uncertain. These estimates are based on
 the distribution of apparent hill stone near the 5 structures
 wall.

WHITMAN 1.95 m S from NW corner

4/8/08

208-01-

ZS's lth. (lth. 202-49) (cont.) - SAPPH-

There are limestone cobbles extending 0.3m S. from the
 SE. corner towards KBMS, stepping 0.03m W of that
 wall. It could define the E. side of an area
 in which burning occurred, though the burned
 patches are about 0.15m where the thickest
 base of SAPPH.

4/18/08

lth. 202-46 (David's): The core platform seems to be
PS2, PS1, PS3 C? + XBOX - all of the corners
 seem to be integrated. NB: about the E. + W.
 burial wall and may have been the foundation
 for a rear divider on the summit. Insofar as NB
 from any direction it looks N but it is very
 unclear + may just be reversed fill. ATARI of
 ? - define the N. face of an apparent terrace
 appended to PS1 on the N. It doesn't run in a
 straight line but steps back to the S. about 1/2
 way across the E-W. length. It is unclear if
 it will run off the NE. corner of the ATARI/?
 terrace heading down slope to the E; could just be
 fill/fall.

SE94 CD is a box defined by flat-laid stone
 set against the platform's SE. corner + running 0.9m
 to the S., measuring 0.3m E-W. + 0.55m N-S on the interior
 which is quite filled w/ dirt.

PS - is a wall that defines the S. face of
 a terrace that abuts the platform (XBOX) on the
 S. running back S. from the platform's S. corner + intersecting
XBOX just shy CW, of the SE corner into ATARI but
 straighter + clearer.

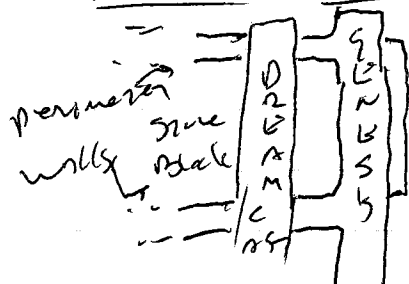
4/18/08

lt. 202-44C (David) -- virtual B7 record of 1
large stone that projects w. from the PS- (S. terrace)
sun corner -- seems to be integrated w/ the w. face of
that terrace -- GAME GEAR.

A block of stone floating high on short pier
3cm S. of PS- (the S. terrace) and seems to be
connected to PS- by a 0.42m wide wall (2 stone
wide + 1 high) on the NW. corner SPES projects E
from center SW. corner of the block + seems to select
GAME Bay which then runs S. + out of the glaciation
on this GBA looks like the w. face of GAME Bay and
rather an integrated corner w/ GENESIS running to the
W. GAME Bay + GBA are well SPES in deeper than
the stone block but not as deep as GBA/
GAME Bay

W 64 m are stone high + wide + lie w. of
GBA -- look late.

DREAMCAST run ± parallel to + S. of, GENESIS.
both are ± equal in depth + rise at their lower part
E. → W. DREAMCAST becomes the center for rock-
block (1 stone high + wide) on the W. -- the flanking
stones about DREAMCAST on the S. on the W. these flanking
stones are deeper still about DREAMCAST but seem
integrated w/ GENESIS. GENESIS ends ± even w/ the W.



whose name is appended to
the W. face of GENESIS and
look late.

Miltra looks like a very late addition to GENESIS
turning an integrated corner w/ Blind and stops
0.25m S. of where it is on the 202-44C

4/24/08

PC8-01-

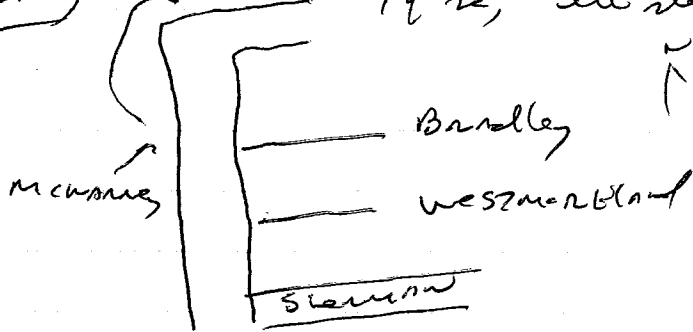
St. 20259(?) (Gabriella's) : Basically only cleared
 in an apical trench running N-S. All relevant data
 is on the section and plan. Starting from the S.
 the platform is faced by a series of terraces
 pented mostly by large cobble rising (S-N)
 up E. corner (level) + Sheridan. Sheridan borders
 the summit on the S. Trench summit supports a
 (mostly cobble) wall (Lengsreer) that likely
 served as the foundation for a superstructure.
Lengsreer turns a corner on the NW and heads to
 the W. on S. Jackson. This unit, together, could
 form an earth-and-stone-filled bench exposed to a
 maximum height of 0.45m at the NE-corner (the only
 place on Lengsreer where a faced Tuff block is
 found, sitting here on top of the preserved corner)
LB borders Jackson to the N. (ca. 0.14m) and may
 mark the N. boundary of a summit rise. Large
 fragments of a fen (whitewash -- looks like Ticon) lie
 0.18m E of Lengsreer, 50cm S. of the NE-corner
 about 1cm above Lengsreer's estimated base.
 Could be that the fen was set off the E. side
 of this summit construction and left in
 place when the building was abandoned. There is no
 clear evidence that the summit was filled
 in coverage Lengsreer.

Benzgast, Burnside, and Bisenhauer are 3
 parallel stone lines on the upper N. side, running
 immediately next to each other. EIS + Burnside may
 be the N. + S. sides of a wall to which BETA was
 added later. BTS's flat side looks N. Burnside looks
 S. + BETA looks S. ~~as well~~ + N.

4/24/58

the - 52-02/ (Gabriola's) (cont.). Sherman may be the next terrace heading down the st. on the W. under large ~~massive~~ ^{pyramidal} of what looks like a Ticore for rest on + the same level as Sherman -- possibly part of a road set here when the platform was in use.

McNary looks like a land stop and balustrade (0.49m wide) that blocks the possible stop Bradley + Westmontland on the W. Sherman may also stop at the McNary balustrade. If so, the stop was offset to the E of Sherman, very near to 52-02.



of the building is center-line.

4 MacArthur seems to have been a land stop on terrace on the W. covered + replaced by Pomona. Unlike the other units noted above, almost all of which are made of rounded river cobbles, the 2 stories of Pomona are faced with blocks.

Pershing has below Pomona and lower S. terrace the wall + the platform. It is likely part of a substructure e.g. either a low platform or a surface-level building lying on of the structure. Note that Pomona sits on a 0.25m thick level of sherd, very closely packed, that would have been Pershing.

4/24/08

the 59 (?) (Gabriella's) (cont):Reck & Reck sizes m. v. L.Pershing - cobbles: $8 \times 13 \times 22$ cm; $14 \times 20 \times 23$ cmPomew - tuft on blocks: $9 \times 70 \times 32$ cm - some sandMcArthur - cobbles $4 \times 5 \times 6$ cm; $9 \times 25 \times 43$ cmMcArney - cobbles $6 \times 6 \times 12$ cm; $20 \times 42 \times 20$ cmBradley (1 size) - cobbles 12 cm $\times 28$ cm $\times 24$ cmWasserman (and) - cobbles $5 \times 7 \times 7$ cm; $13 \times 24 \times 30$ cmShannon - cobbles $3 \times 4 \times 4$ cm; $12 \times 30 \times 20$ cmEisenhower - cobbles 4×7 cm; $11 \times 30 \times 32$ cmTuft (1) 10 cm $\times 29$ cmBurridge cobbles $3 \times 6 \times 10$ cm; $5 \times 17 \times 23$ cmBeunegant cobbles $4 \times 3 \times 8$ cm; $8 \times 14 \times 23$ cmLEE cobbles $4 \times 4 \times 5$ cm; $6 \times 14 \times 15$ cmStarkman cobbles 3×4 cm; $10 \times 14 \times 23$ cmTuft (2) 1 - measurable: $5 \times 29 \times 24$ cmLongstreet cobbles 2×5 cm; $14 \times 30 \times 30$ cmShannon cobbles 5×6 cm; $21 \times 45 \times 33$ cmCusser cobbles 4×4 cm; $9 \times 26 \times 44$ cm

One construction stage overall with the exception of the addition of Pomew or the Pershing mediator that adds but may be viewed as the other rubble architecture of McArthur goes down the Pershing.

Note the importance of cobble lines in tell.

4/24/08

1th. 202-12 (Garner's 2nd)

3rd building seems to have been
buried by a combination of earth and stones on
the N.E.S. side, ~~partly~~ partly on the S.E. + W.
flank as well, though these were not exposed.
On the S. G.H. 182 apparently ~~was~~ was covered
with stone, mostly buff chunks and a few
cobbles. G.H. 182, and the other perimeter features
(G. 100, G. 100, G. 100 + 100 on the S.E., N.E., + W.,
respectively) are apparently furnished primarily of
well-sorted cobbles up a few roughly cut
buff blocks on top. G. 100 is within ca. 22m
S.E. of the N. corner of 100 to ca. 5m wide after running
for ca. 3m across. Note that where G. 100 is within
its ditch (G. 100) side is formally faced white
to the NW the painted color of the one-stone wall
was painted. The back of the other level
walls are not clear. Note that H. 100 is
only 1 stone high, rest is full compact primary
limestone tuff and is made of a mix of cobbles +
tuff - lower N.E.S. but is only 1 stone wide. G. 100
H. 100 intersect G. 100 where the latter
is within the S.E. Could be that
G. 100 S.E. end H. 100 define the N.E. + W.
corner of a room bounded by G. 100, and, maybe,
G. 100 on the S.E. + S.W.

G. 100 leads into a level terrace on the S.E.
that is made of a mix of large cobbles + roughly
faced tuff G. 100 goes down and is cherted G. 100
COPOLIT floor which itself seems to have been
cut on the S.

4/24/08

PC8-01-

the 202-12 (Barnes's 2nd) (cont) - state that the burial on the S. is beneath the level of 000154 but is not covered by it.

Also, the fill of 202-12 is mostly made of recent till though the retaining wall is of cobbles, ~~from~~ for the most part.

The 2 burials on the N. are just at the level of 0400154

This building looks like it was purposefully buried, perhaps along w/ the 3 individuals buried here

the 202-106 shows a large box of a platform defined by muck, blackstone, volcanic, and sandstone on the N., W., S. & E. in turn we picked up the back of the upper stairs of sandstone in the section.

The ~~solid~~ conditions were made primarily to the S. Sandstone was set against the E. wall covering all but the upper - m of sandstone.

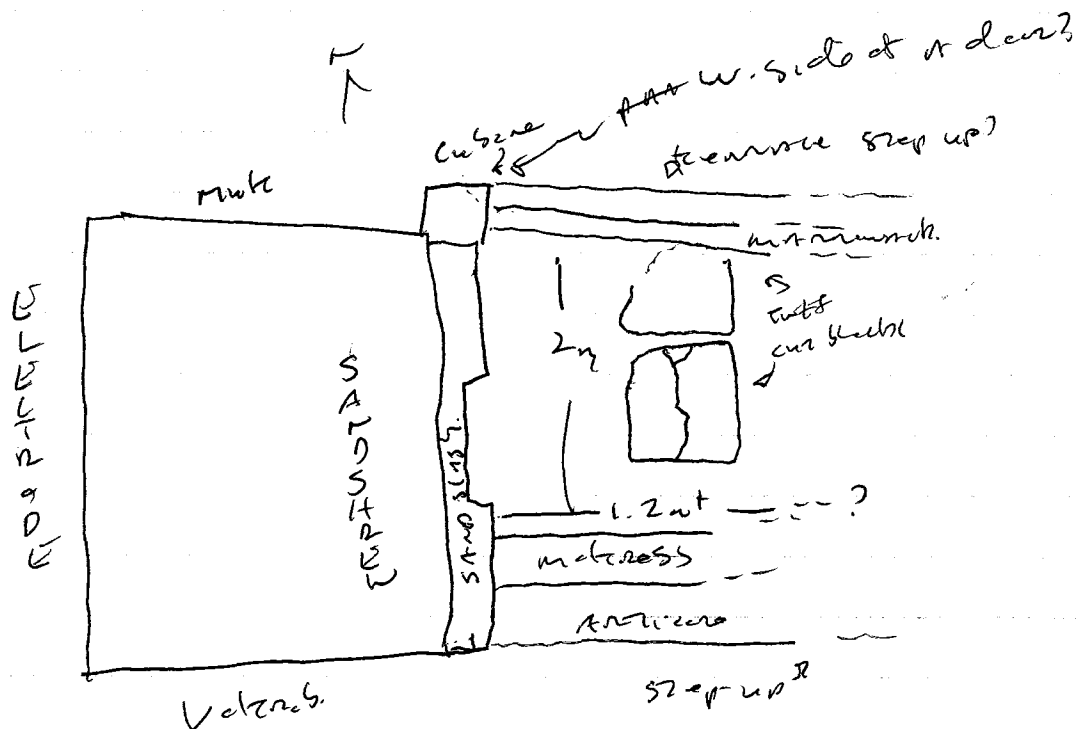
Sandstone steps back almost to the face of sandstone about 1/2 way across. This addition is heavily abutted by Mortress which runs to the E. towards the 202-12. Arwene (?) points

Mortress on the S. and looks like a step up to a room defined by Mortress on the S. &

Marrowack on the N., another line, this line extends N. from Cubane a stone block stuck into the N.E.

corner of the platform (the muck/sandstone junction) Cubane may be abutted by Marrowack - it's unclear another line faces Marrowack on the N. like Arwene points Mortress on the S.

4/24/08
Ltr. 200-116 (Emerson's Jail) (cont.).



St. 202 - (Everts 187.) This is a large platform defined by Dawson, Dodgeville, Pidgey, and Iyassau/Jyak on the S., W., E., & N., respectively. Built off the E. corner of Pidgey on the W. is a set of 2 steps (WARTON 15 + BULSASSAU). Interestingly, there is a clear E. end of the wall step but on the W. Squire delimits this side of the step.

Blossrose and Pikachu may have been added later, extending ca. 0.2 m beyond (w. of) WANT., turning the slope into an erect staircase.

Blossrose on the E. shore can I date P10467 on the E. while Pikachu's relation to P10467 is uncertain; it looks like it should about P10467.

4/24/88

the 202 - (Ennot's 1st) (cont.) Pidgey
 turns a clear corner DRAGONITE and Trystan
 on the w. side, in turn. PIDGON seems s. parallelly
 + immediately in front of (w. of) DRAGONITE (the w.
 wall null). we didn't find a s. only
PIDGON which seems to be equivalent to the
 base of DRAGONITE. It may be that PIDGON
 may have been covered at some point while
DRAGONITE was still in use. Note the crest
 corner formed by the PIDGON / RAICHU junction.
 Raichu Pichu

PIDGON

By this point the central stairs were
 largely flanked by 2 rooms -- the w. one
 is largely open on the n. except where a w.
 extension of PIDGON projects into the room.

KADABRA may delimit
 the E. side of the step and
 the w. side of a pitature
 E. room the latter
 enclosure is less obvious

than the w. counterpart, especially on the s.
 In the E room ZAPIDS is clear on the s.
 while it is not clear on the s. in the E.
 room -- could be we didn't go back
 far enough to the s.

2 steps, DRAGONITE + HYPER are set 0.12 m
 back (s.) of ZAPIDS -- didn't find their E. side

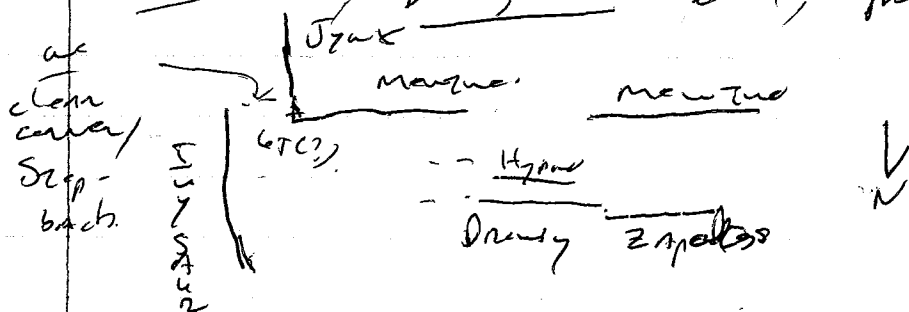
SACRAL delimit the w. side of the step -- didn't
 find the E. wall of the step. PARROT may well be

4/24/08

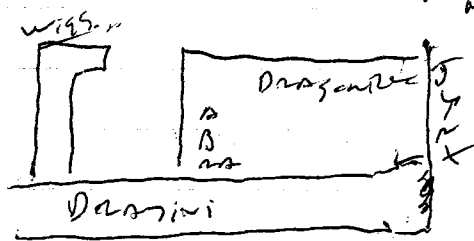
lt. 222 - (Korners (rt) (cont) the back
(B.) side of GU-cube which delineates the step on
the W.

Tiggly putt corner w/ Zapdos - there's
fill placed between Tiggly putt + Dragonair - not a
fence wall but it looks like the fill was
intended to continue Zapdos out to the back
back (B.) side of Dragonair.

Mature is the next terrace near above
Zapdos - it seems to step equal to the
location of the Hypoc / Dragon step - possibly
forming a clearing into the the summit.
Mature is not well preserved but seems to
corner w/ Dragonair end, possibly, w/ Tigax.



The summit consists of Dragonair and
ADNA, possibly a level but w/ ad no step
clear W + S. line and wiggly, on L-shaped
summit wall that may define the W + B sides
of a room open to the N (Dragonair double on
the S. perimeter of the room).



Zigzag looks like a very
small addition to Dragonair -
like what huge had on
has monumental str. at El
Cajete or 2nd.

4/24/8

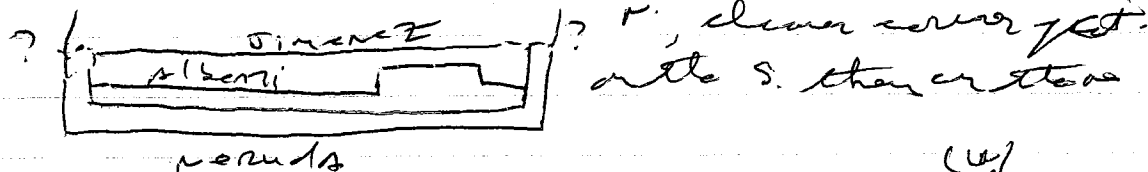
lth. 202 - (Commons lat) (cont'd). Note that
 Charwooder runs under woodwork under part of an
 earlier construction. Charwooder, at least, were
 buried by ash, thereby preserving them.

There's no clear stone floor in the w. part of
 room.

Much of the w. face of lth. 202 - is
 covered by a mix of rubble, tuff set in a fine
 brown soil but there's no retaining wall for
 this fill. The same fill ~~continues~~ continues over
 to lth. 202-7 (Robert's), where it covers that
 platform's w. side.

lth. 202-07 (Robert's) - - basically an
 extensive platform filled with earth + stone,
 most notably cut tuff blocks that appear
 jumbled in w/ the rubble. Note that the
 basal w. and e. walls have a pronounced
 batter, sloping down into the core while N. & S. Ss,
 on the N+E, have flat, vertical
 faces.

On the E. side a basal terrace (NE corner)
 goes up to Alberri, a wall that steps in, almost
 flush to J.R. Jimenez, a terrace facing that
 runs the full N-S. length of the st. Jimenez
 may actually corner w/ 3 cm and 40 cm on the S +

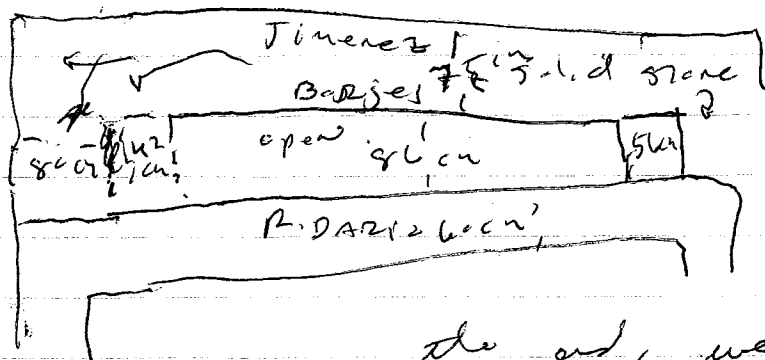


Boyer's corner w. and may be the last of Jimenez
 but it stops 1.3 m short of (S. of) Acosm

4/27/08

St. 202-07 (cont.) --

← shanty, reg 2 scale.



Look into it
how one large
bed (w.) near
pented by a series
of lenses that, by

the end, were probably all filled
in to make one large stone block (Jinenez to
R. DAZIC) pented by Alberni + Nemadon.

