

1995

PVN-001-Schortman-Field Notes-1995

Edward Schortman

Kenyon College, schortma@kenyon.edu

Follow this and additional works at: <https://digital.kenyon.edu/honduras>



Part of the Archaeological Anthropology Commons

Recommended Citation

Schortman, Edward, "PVN-001-Schortman-Field Notes-1995" (1995). *Four Valleys Archive*. Paper 6375.
<https://digital.kenyon.edu/honduras/6375>

This Field Notes is brought to you for free and open access by the Anthropology at Digital Kenyon: Research, Scholarship, and Creative Exchange. It has been accepted for inclusion in Four Valleys Archive by an authorized administrator of Digital Kenyon: Research, Scholarship, and Creative Exchange. For more information, please contact noltj@kenyon.edu.

217/95

Op. 12T,	lth. 15,	2	(Anthony)	=	2
Op. 55A,	lth.	4	(Christie)	=	4
Op. 55B,	lth. 79,	2	(Joy)	=	4
Op. 55C,	lth. 78,	2	(Joy)	=	4
Op. 18F, D,	lth.	4	(Dann)	=	4
Op. 55D,	lth. 23,	2	(Brian)	=	4
Op. 18E,	lth. 22,	2	(Brandon)	=	4
Op. 15D, E,	lth. 32,	6	(Amy)	=	6
Op. 20B,	lth. 86,	4	(Shirley)	=	4
Op. 53C, F,	lth. 38,	4	(April)	=	4
Op. 53D, E, G,	lth.	4	(Bever)	=	4
Op. 53A, B,	lth.	4	(Shirley)	=	4
Op. 14E,	lth. 66,	4	(Christina)	=	4
Op. 13F,	lth. 55,	2	(Peter)	=	4
Op. 13E,	lth. 56,	2	(Joy)	=	2
Op. 16B,	lth. 44,	2	(John)	=	4
Op. 16C,	lth. 46,	2	(Garnett)	=	2
Op. 16D,	lth. 16,	2	(Brett)	=	4
Op. 12H,	lth. 1,	4	(Beulah)	=	4
Op. 36H,	lth. 2,	2	(Nicky)	=	4
	Don't know	61			1

77

$$\begin{array}{r}
 200 \\
 200 \\
 440 \\
 300 \\
 200 \\
 \hline
 1340 \\
 6 \\
 \hline
 8040
 \end{array}$$

$$\begin{array}{r}
 22 \\
 200 \\
 4400 \\
 15 \\
 \hline
 9 \overline{) 22000} \\
 \underline{2745}
 \end{array}$$

$$\begin{array}{r}
 120 \\
 15 \\
 \hline
 600 \\
 120 \\
 \hline
 1800 \\
 70 \\
 \hline
 9 \overline{) 160900}
 \end{array}$$

$$\begin{array}{r}
 1800 \\
 7 \\
 \hline
 9 \overline{) 12600} \\
 \underline{1400}
 \end{array}$$

$$\begin{array}{r}
 20000 \\
 1400 \\
 \hline
 10000 \\
 10000 \\
 \hline
 2400
 \end{array}$$

$$\begin{array}{r}
 29,400 \\
 5 \\
 \hline
 9 \overline{) 122000} \\
 \underline{13554}
 \end{array}$$

$$\begin{array}{r}
 13,556 \\
 13,000 \\
 \hline
 25,556 \\
 14,000 \\
 2200 \\
 6000 \\
 \hline
 37756
 \end{array}$$

$$\begin{array}{r}
 6500 \\
 3 \\
 \hline
 9 \overline{) 19500} \\
 \underline{2162}
 \end{array}$$

$$\begin{array}{r}
 37752 \\
 12000 \\
 \hline
 37752
 \end{array}$$

$$42,000$$

$$\begin{array}{r}
 38,000 \\
 2400 \\
 \hline
 40,400
 \end{array}$$

$$34,000$$

4/5/95

SubOp. 12I. (Ceale's excavation at La Meria). Ceale seems to have exposed one of the more elaborate str. (probably an elite residence) in the N. cluster at L.S. Cut blocks set vertically despite the lateral course of a step (1 vertically, set back high) that is surmounted by a flat-laid set of blocks to make a formal staircase that runs \pm N.-S. before turning back to the W. This lateral run, in turn, is surmounted by another, less well-preserved cut block step with low, low, vertically set stones surmounted by long (in one case) horizontally set blocks. The

{ $\xrightarrow{\text{F.}} \rightarrow \text{W.}$

remaining 2 steps are built of a mixture of C.B. + cobbles set horizontally. The stair back to the 3rd step are flats flanked / stepped on N.+S. by C.B. well apparently alternating vertically + horizontally set C.B.'s in 1/2 course w/ lowest, vertically set. These flatters give way abruptly at the 3rd step to well needed medium to small cobbles that run back to the main N.-S. ^{platform} wall on the E.C. This wall seems to protrude in the stair line to comprise a 5th step to the monument). 3 landing the steps on the N.+S. - cobbles surface retained on the E. by a low terrace wall built of a mix of C.B. + cobbles + some select slabs + continuing the line of the lowest step.

Note that a cobbles line (N.-S.) - in line w/ the 3rd step - was noted running at the base of the surface on the N.+S. so would represent an earlier version of the E. land wall, etc. 3rd step then being a part of that earlier construction. Later the C.B. steps were added + the whole building expanded E.-ward. This putative line does not continue

11/11/11

1. The first part of the paper is a review of the literature on the topic of the paper. It starts with a general overview of the field and then moves on to a more detailed discussion of the specific issues that the paper addresses. The literature review is organized into several sections, each dealing with a different aspect of the topic. The first section discusses the general theory of the field, while the subsequent sections focus on more specific issues. The literature review is written in a clear and concise style, and it provides a good overview of the current state of the field.

2. The second part of the paper is the main body of the paper, which contains the results of the study. It starts with a brief summary of the study and then moves on to a detailed discussion of the results. The results are presented in a clear and concise manner, and they are supported by a variety of statistical tests. The discussion of the results is written in a clear and concise style, and it provides a good overview of the findings of the study. The results of the study are presented in a clear and concise manner, and they are supported by a variety of statistical tests.

3. The third part of the paper is the conclusion, which summarizes the findings of the study and discusses their implications. It starts with a brief summary of the study and then moves on to a detailed discussion of the implications of the findings. The conclusion is written in a clear and concise style, and it provides a good overview of the findings of the study. The implications of the findings are discussed in a clear and concise manner, and they are supported by a variety of statistical tests.

very far on the N. end (p. 67) and either the building was not on the N.-S. at 1st and it was ~~to~~ in its final version or the basal B. line was partially ripped out during later construction. The N. flank of the final B. terrace seems to consist of a simple rubble surface over the terrace to the E. (though there may be a low foundation for possible upper wall rising on top of the N. basal line (ca. 0.4 m across N.-S.) -- not clear a wide / semi-wide of red rubble protrudes from under the N. basal line to the N. -- significance?

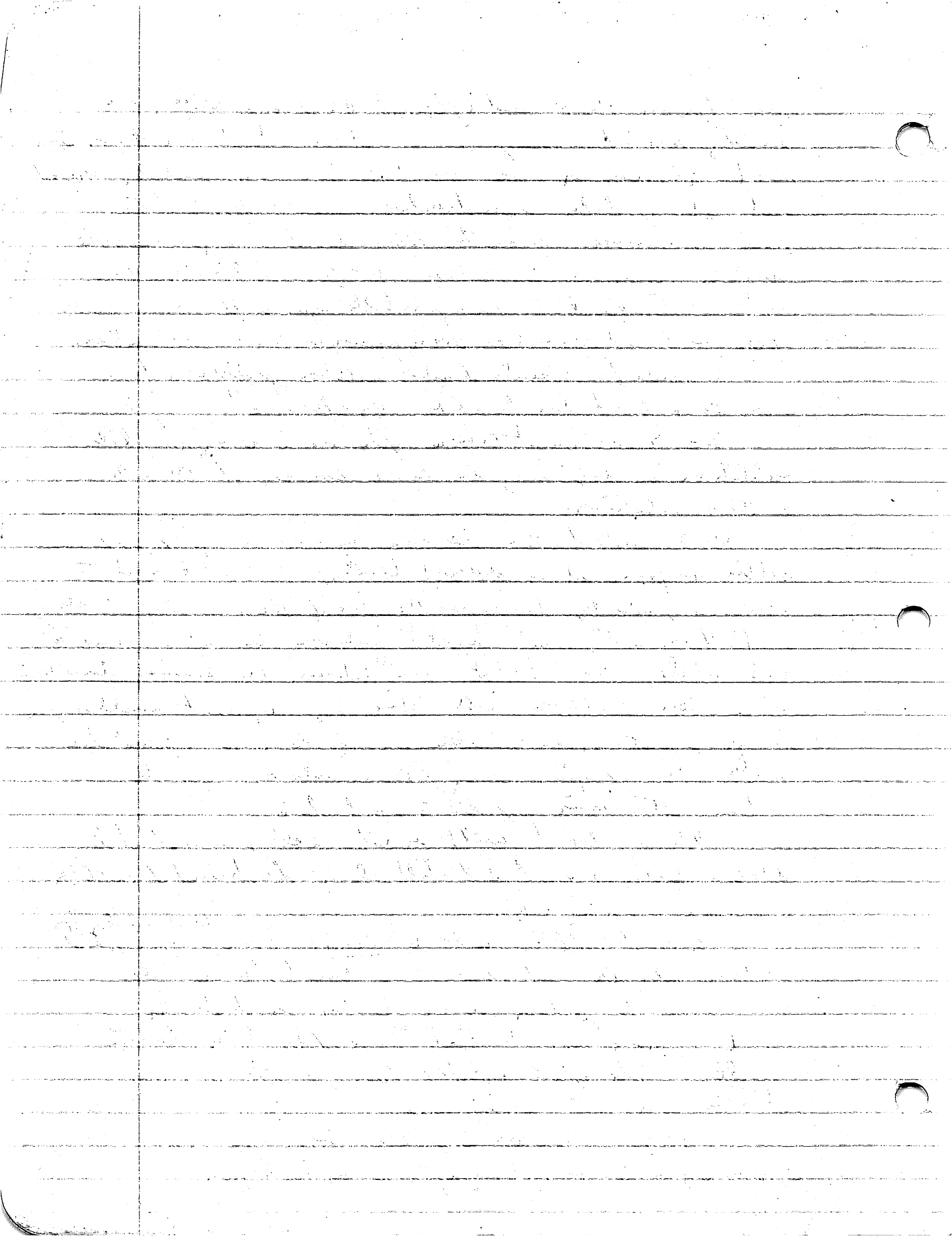
The S. + N. basal terrace ^{to be} ~~extension~~ ^{very late} additions in its long the lower course of the C.B. B. stair addition.

The S. side of the terrace is more complex, w/ rubble surface at 2 different levels - the lowest next to the step, extending back for the line of the 3rd step to the E. platform wall, next highest adjoining the 1st pavement to the S., while the highest runs between the 2nd intermediate surface + the B. terrace wall. These may represent wall remains though except on the S. there are no clear room foundations walls. The S. ~~extension~~ ^{is} ca. 0.85 m wide N.-S. w/ its S. face ~~terminating~~ ^{terminating} w/ the S. basal line.

The N. basal wall is not well preserved while the S. is, tithing S. wall but still clearly fashioned of rubble (previously / + rare C.B. r.

A low ^{attached & along the} rubble wall (L'Incra) runs S. + for a short distance along the N. of the S. + B. basal terrace. This wall seems to pertain to an earlier construction ^{below} ~~on~~ ^{at} the base of the later terrace walls. The extent + shape / form of the L'Incra structure was not determined.

Neyon is ^{B.-N. region} ~~in~~ ⁱⁿ rubble wall that dates Paris, its B. summit wall. Neyon's significance is unknown.



5/11/95

Str. 444-1 - an extensive platform with a low platform/terrace added on the S. I think that there is a hard wall below Saghe on the east, not fully cleared but it looks like a low step/terrace providing access to the presumed room atop the S. terrace. Most of the S. terrace seems paved with schist slabs but there are sections of dirt on the N. (next to the platform) + S. (see the plan). A series of steps flanking the central/east facade N.+S. The central portion occupied by an "L"-shaped bench of faced + filled with stone + backed by a stone-paved raised area. 2 "steps" / terraces provide access from bench to raised area on the W. Bygone wall seems to have been added late on the SW. + is not clearly connected to the rest of the building Rossetti. original SW ^{low} wall? 2 possible, stone + dirt floored room flanking the bench on the N.+S. + one flanking the raised area on the N.

Str. 444-2 - a low, casually built platform built in a N.-S. rise immediately NW of Str. 444-1. The central area supports / contains a narrow room with a low shelf on the N. and is flanked by 2 earth- (mostly) floored rooms on the E.+W. A room seems to have been built on S.S. immediately W. of the str. + ~~room~~ containing a block of stone, mostly cobbles but with a line of schist slabs ~~down~~ running N.-S. to the approximate center, set on end. The walls of the room are very casual + hard to discern. (She N. exemplar: room to be terrace / stone high set into the N.-S. rise. She N. room: the largest with a very narrow, 1 slab stone wide, wall running E.-W. + it: another raised room may have been appended on

10/1/12

10/1/12 - 10/1/12
10/1/12 - 10/1/12
10/1/12 - 10/1/12

10/1/12 - 10/1/12
10/1/12 - 10/1/12
10/1/12 - 10/1/12

10/1/12 - 10/1/12
10/1/12 - 10/1/12
10/1/12 - 10/1/12

10/1/12 - 10/1/12
10/1/12 - 10/1/12
10/1/12 - 10/1/12

10/1/12 - 10/1/12
10/1/12 - 10/1/12
10/1/12 - 10/1/12

10/1/12 - 10/1/12
10/1/12 - 10/1/12
10/1/12 - 10/1/12

10/1/12 - 10/1/12
10/1/12 - 10/1/12
10/1/12 - 10/1/12

10/1/12 - 10/1/12
10/1/12 - 10/1/12
10/1/12 - 10/1/12

Q.5. to the w. of this room as my house been the case on the B. - level clear here.

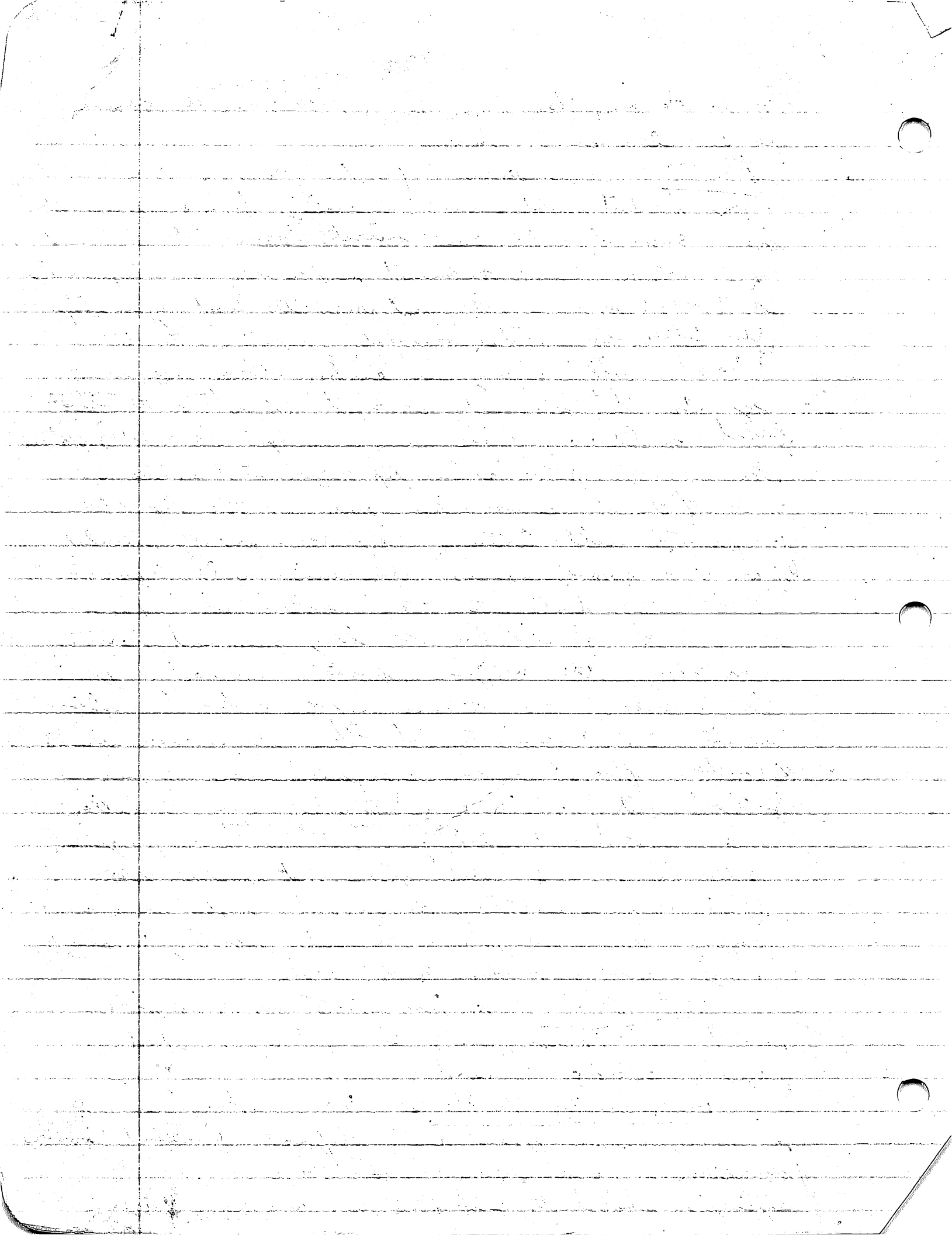
Str. 444-3 - (immediately B. of - Str. 444-2) - then a long plastered outlet - built separately from & separated from 3. level well. This outlet looks like it rises on 2 steps to the summit w/ another outlet possibly built over (or now changed over) the 2nd, upper step.

This latter construction connects, w/ stone, to the 5. level well - it may be earlier than the other segments that do not connect w/ stone to that level well + my house been a shelf? There likely just the record step. A low step-cut is noted on the B. side off the SE corner - step - even w/ the top of the B. perimeter well. Centauri 1 lge. room partially divided by an E.-w. masonry narrow (1 stone-wide) wall. A possible bench/shelf built into the w. wall - which stone in this part but not elevated. A long, curved terrace runs along the n. face. A stone connector joins the S. side of the terrace w/ the n. level well (about both) ~~as~~ Could there be a room divider?

Easton - plastered room everywhere here. A narrow feature of sort of rubble + schist slab (was the latter much the unit in B. side) ^{with rubble, masonry, schist} put out from a n. projection of the str. at an angle that does not match the building's orientation. A curved, schist stone unit projects from the str. in w. side, abutting (nearly) + not running under that side.

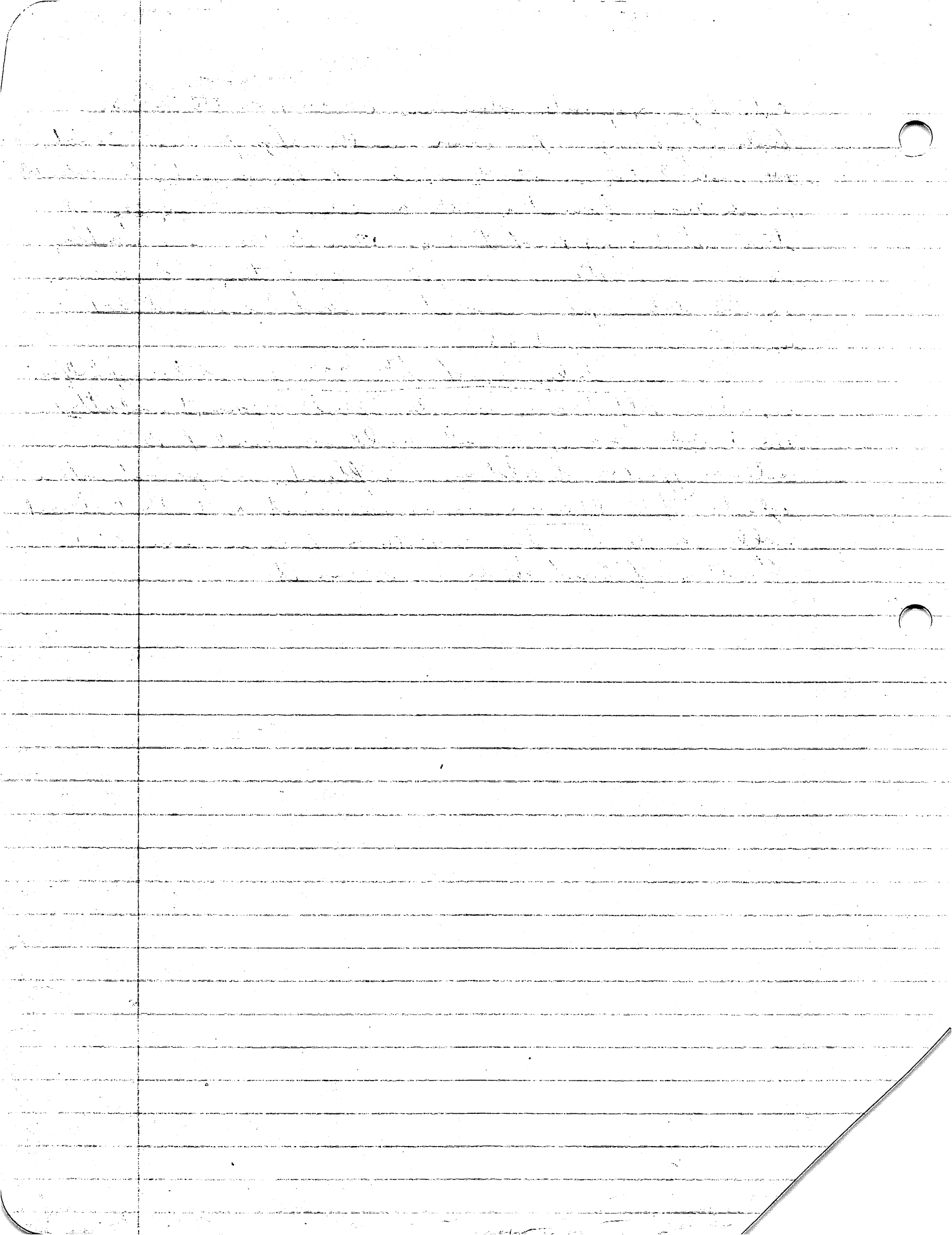
Next str. E. - a low platform w/ a visible masonry wall / bench, possibly 1' high w/ a short projection extending S.-ward.

From Copley to the B. - 3rd S. str. seems to be a rough earth-floored room defined by a low ^{low} schist + rubble foundation w/ a door in the n. + new SW corner. The n. example: undulating, schist stone laid w/ no projection



extending in opposite directions (E. + W.) on the N. + S.
ends respectively. No room - wall. Significance? Could
the indentation in the \pm center be for a post? Considerable
clash were found on the N. edge here + at the 1st
test pit (1x1m) N. of it (ca. 10m to the N.E.). Something
to do w/ storage + / or pottery production? The clash
in the latter pit + around the unit - concentrated
up high - ca. c. 30m B.G.S.

50m
The immediately S.E. of the 444-1, a low platform
w/ a low shelf / room divider built against (abutting)
the S. wall room / basal wall. A level of BT
extends off the building's S. floor. A paved surface
extends from Blue ex on the summit N. to the N. basal
wall. A likely step is off the N. face, or apex (\pm).
Roofing - flared off to S. summit.



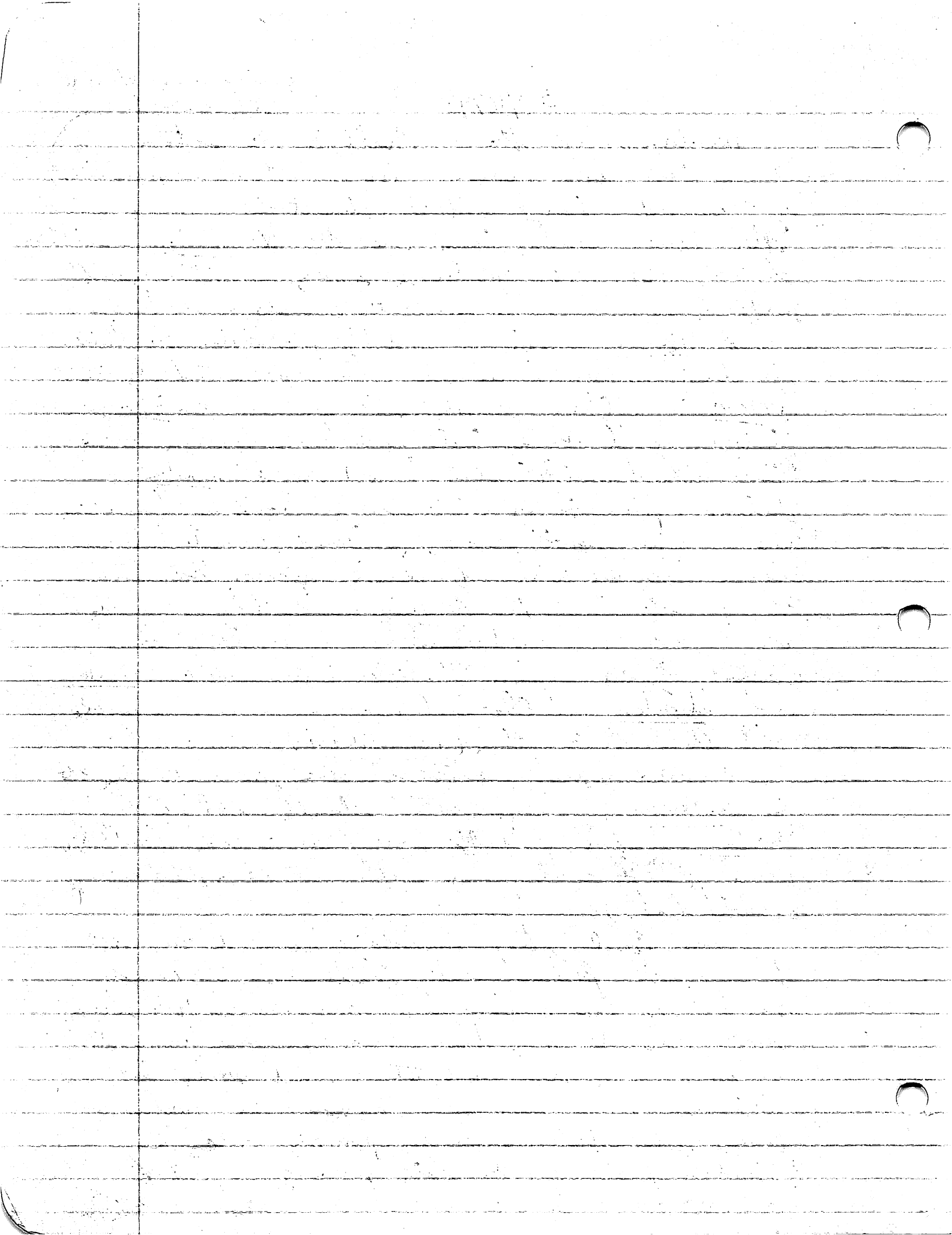
5/18/95

Shadow v. - built over
this line too.

Brendan's 1st str. - multiple renovations
The earliest ~~see~~ version seems to be represented
by a line of large cobbles (Plan Pt. #30 or more?) -
after that covers a basic core, the Shadow well -
1st, 2nd, 3rd + 4th. ~~after~~ for a very small "original"
platform. The large cobbles line on the E. - into dense line -
= v. Shadow well + v. probably postdates the latter
The last version seems to be represented by the
Attention well (1st-4th) that enclose the Shadow
platform on all sides. Still pushed in between these
2nd str. of well (clut + stone) - buried Shadow +
helped preserve it. The buried Brendan found on
the v. was ~~partly~~ probably entered, accidentally,
perhaps, during this building phase. Note that
the S.E. corner of the Attention building has an
inset corner on which faces a small room
created by the space between ~~the~~ the E. Attention
and Shadow wells and ~~an~~ E.-w. running cobbles
wall that links them (157 Addition)

4272/1
Note - a partial cobbles surface runs under the
E. Attention facing + into directly below E.
Shadow well or probably part of an earlier building
phase, ~~possibly~~ ^{possibly} contemporary with the Plan Pt. #30 large
cobbles line.).

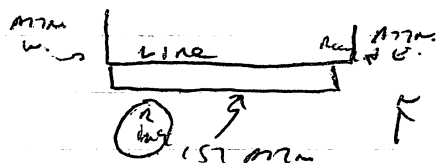
The final phase building seems to consist
of an earth-floored entry feature on the N. side
bounded by low, shallow, v.-s. running cobbles lines.
Shadow's v. well may have been preserved + visible
on the v. in a step-up to the summit. Backs that
wall on the S. is a low (~~does~~ ^{does} not reach to Shadow's
line) , solid cobbles construction. Possibly an earlier
(Shadow-phase) bench later surviving as part of
the summit surface & cobbles for low S. - Shadow's



Attention

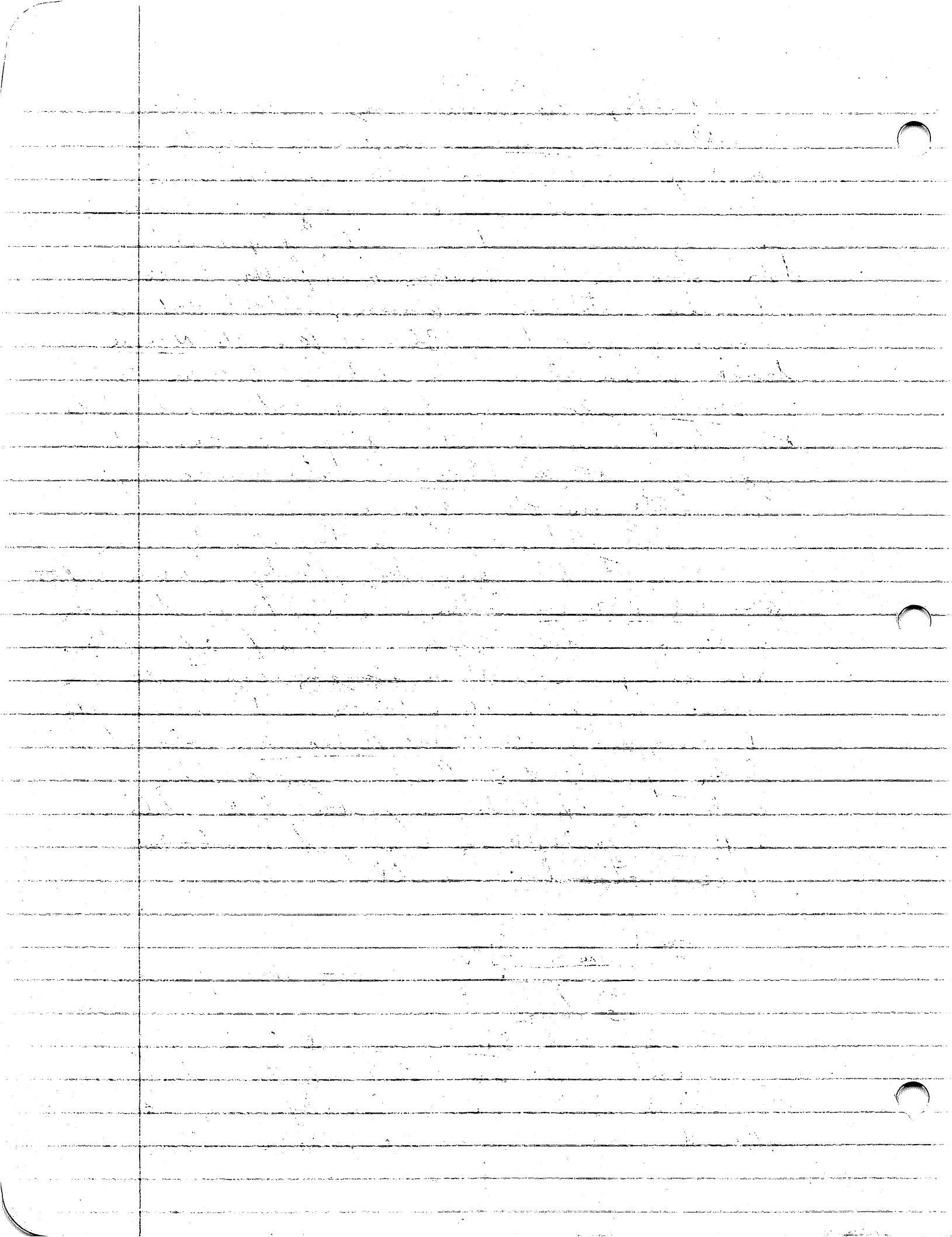
Looking at the entry way on the E + W -
 2 small rooms. N-line in the E room may be a
 bench running N-S. while the segment of Shadow is
 preserved in the W room (+ running E-W) as ~~higher~~
 here may have served a similar purpose. It is
 higher than the Shadow is further to the
 E. (in the "entrance" + E room), and is backed by
 a densely packed rubble surface. The N-line
 "bench" is less clear. The distance between the
 S. Shadow wall may have served as a level for
 the first summit, then helping to account
 for why the S. Shadow wall was so high -
 so late in the sequence.

Note that the above is has already been
 proven to be too simplistic. Starting ca. 0.6 m N of the
 S.W. 1st Attention corner + at pt of inset corner
 on the S.W. a line shows up / line of excavation.
 This corresponds with a change in construction (a
 stone stack) on the W + the inset corner on the
 E - suggesting that 1st Attention, added
 later, possibly the last major addition,
 contemporary, I think, w/ the late, shallow
 S. Ring feature + the L-shaped S. wall of
 pre-standing wall.

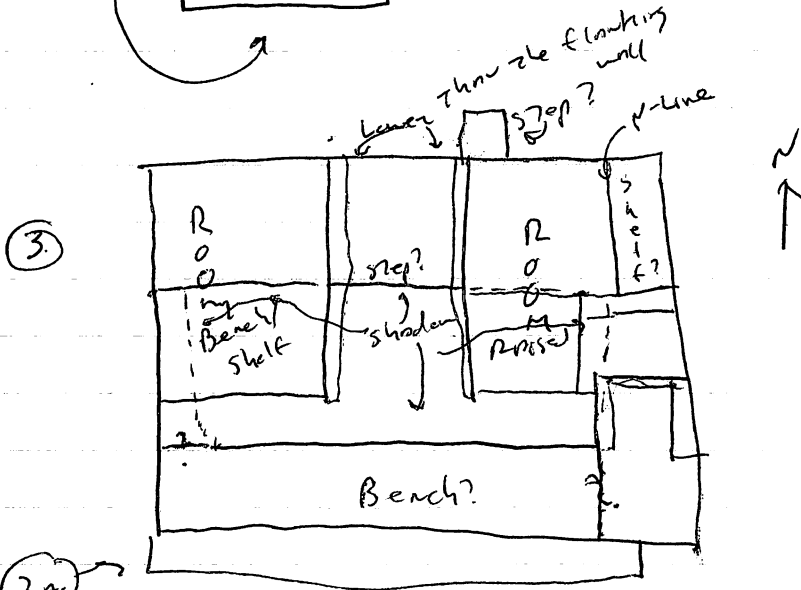
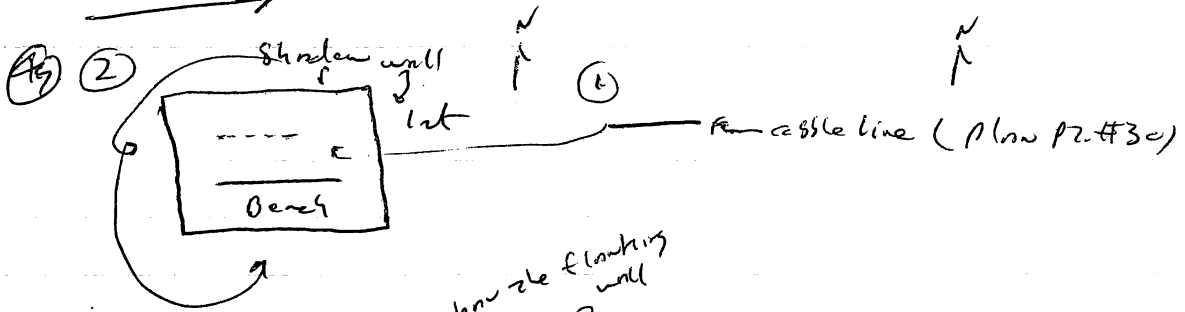


+ Plan sketch showing near to
 scale.

Note also that Shadow seems to lack C.B. in,
Attention (not including the late S. addition) but a few,
 + the late S. addition, note. Corresponding to
 different time periods in the site's history?

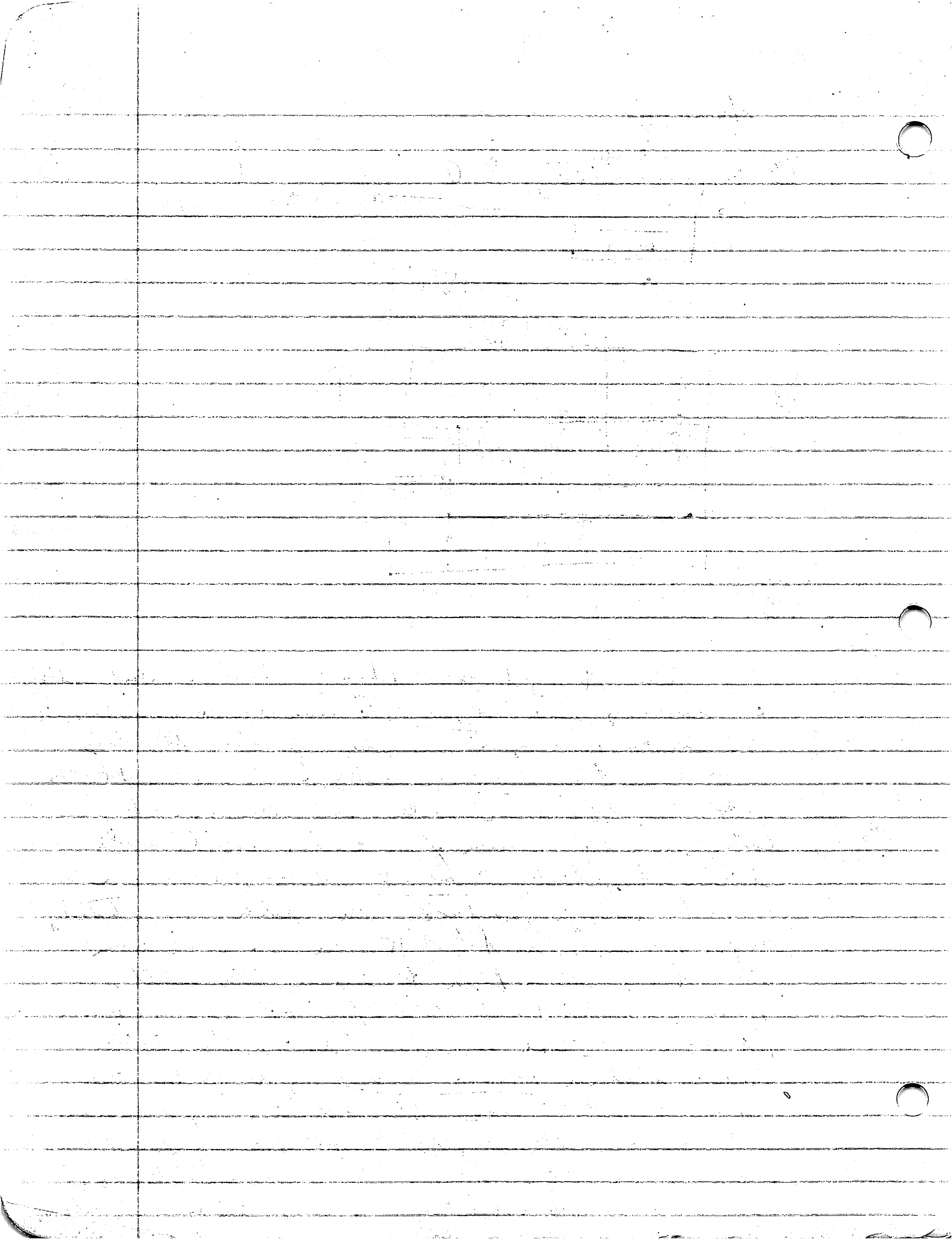


Summary:

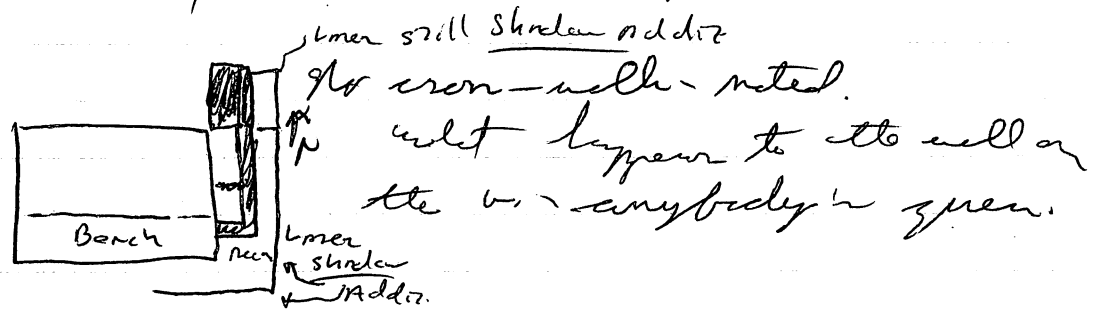


(3A)

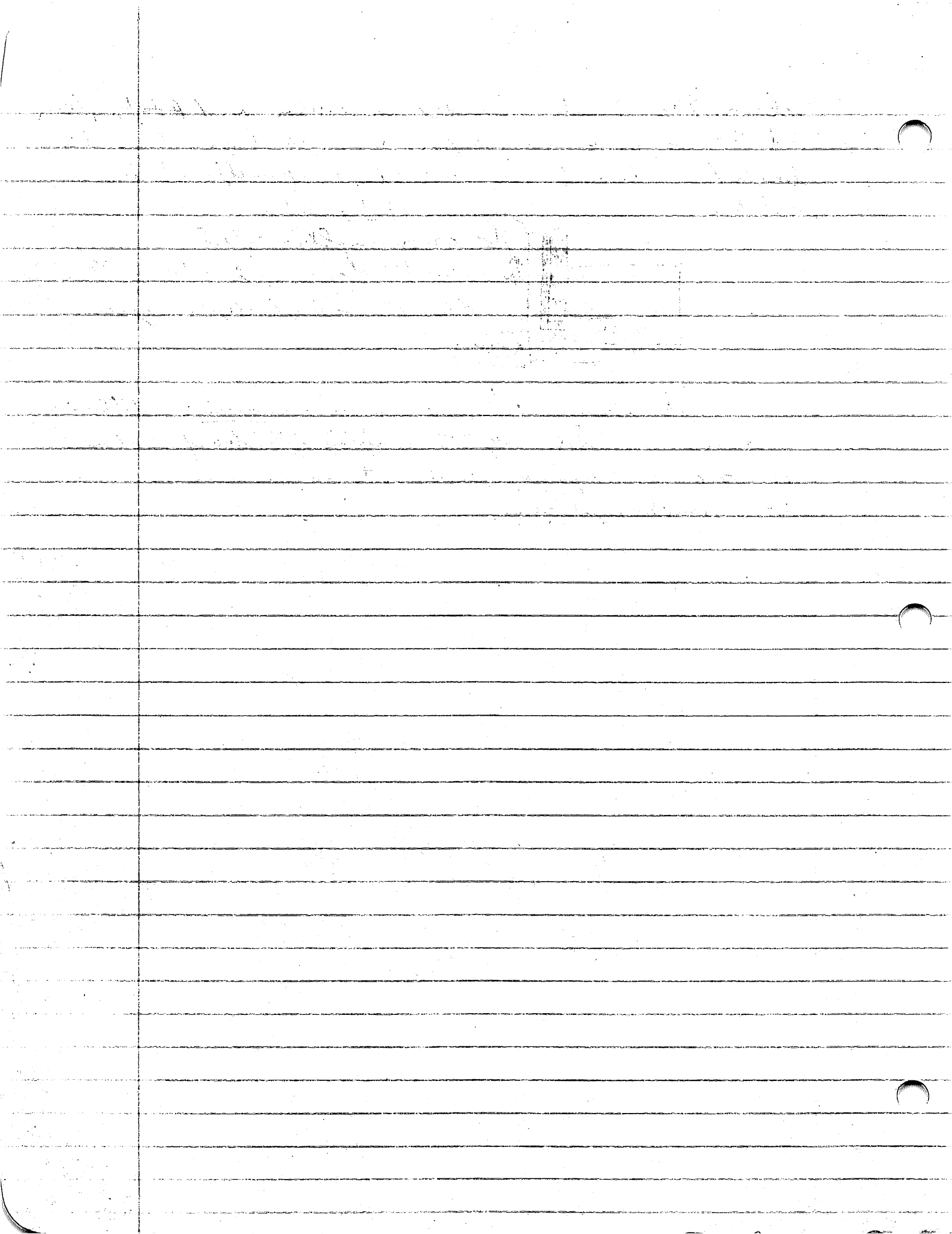
Note: it may be that phase 2 had an entrance to the E. connecting under 1st addition near the SE building in SE corner + running out E, lining up with the large scabbler E of shade E + heading N to ± Plan Pt. #16. ~~later~~ 1st Addition seems shallower but there ^{we} ~~is~~ ^{is} what looks like the remains of an earlier scabbler wall below it, abutting shade E. Later Area 5 was added, lining shade E + the addition + continuing on for N. on Plan Pt. #15 where the wall seems to have turned in to the W. Later still, Area 6 extended out to its first NE corner (Plan Pt. #3.1. N-Line is earlier (lower) than either shade's addition or Area 5. N-Line may be the W. side of this addition's face. The addition may have come out N. all the way to the platform's first N wall where there is a break in construction ± equivalent to the addition's E. face (the W. side where



clear. The break is located ca. 0.45m W. of Plot, Plan
 pt. #3. N. line runs ~~for~~ W. to have been the
 back/W. line of the addition - possibly it stops
 out here?



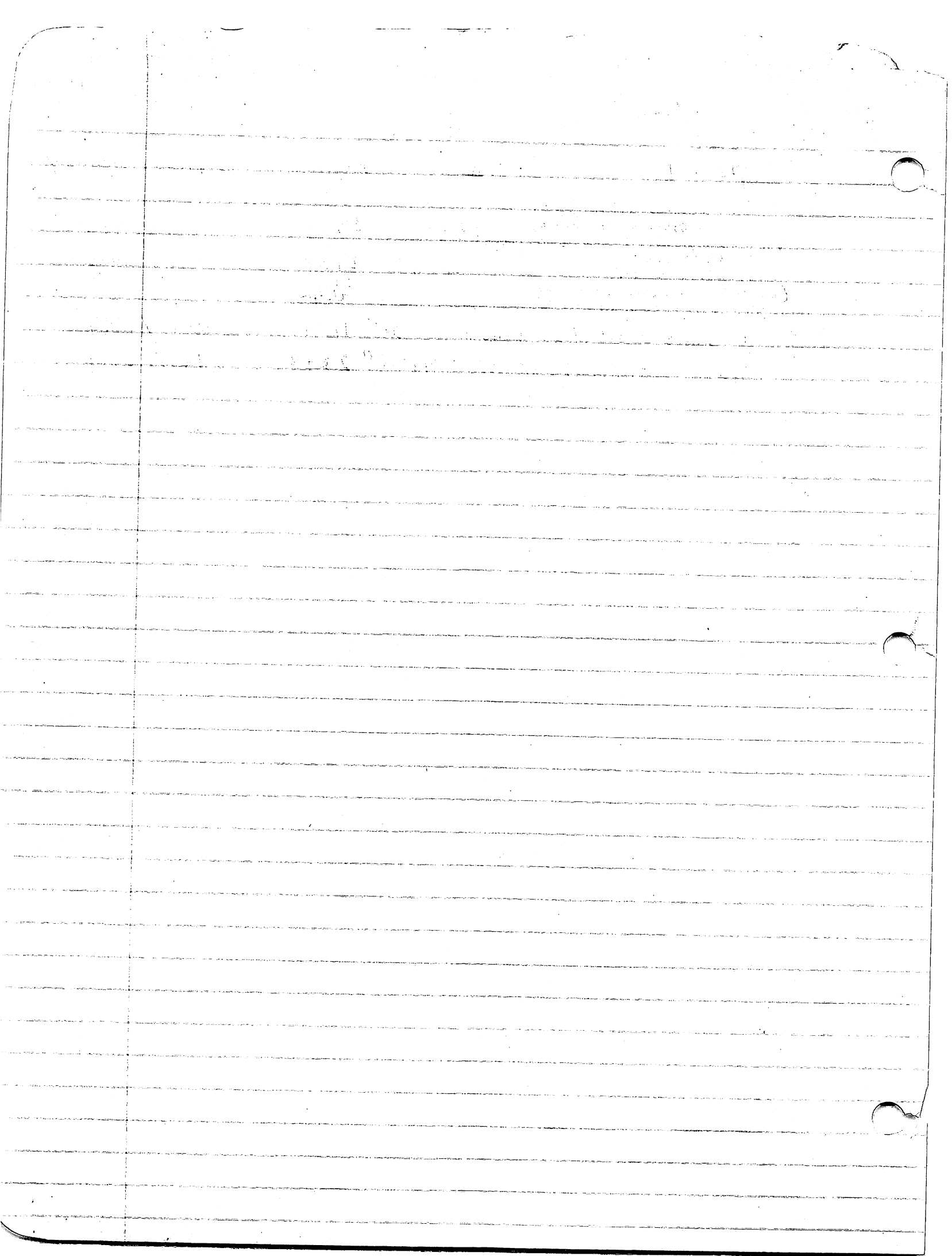
The cross-walk running E-W. near N. line, shallow &
 seems to be a late effort to continue the line of shadow
 N. to the B. + possibly divided the ~~W.~~ E. room into 2
 very small enclosures.



Sta. 1. I H - 1510 tying together with
S. excavations
At L.S.

5/18/95

point	\angle	mid.	DISTANCE(m)
II STA. 1 \rightarrow T.P. 2 (25) (on CDAN'S STR. 1A-12) containing N. STR. at NW corner of mound (Edge Summit.)	34°30'	3361	3184/3540
II STA. 1 \rightarrow T.P. 1 (located on Christine's 1st St. Rn. on 14th Summit, NW corner of Summit line.)	4°15'	3133	2710/3555
II STA. 2 \rightarrow T.P. 1 (I.H. 1660)	201°30'	1109	0825/1394
II STA. 2 \rightarrow P.D. 18 (CDAN'S)	48°15'	2272	1988/2561



6/12/55

Ruben Mejia - lives in Cepacha near the Skardulst
office - owns El Skal.

Guillermo Zelaya - owns lots 262 + 466 - lives in
Cepacha - his brother Oscar Zelaya co-owns the
property.

Roberto (or Alberto?) Boyran - owns lots 161, 162, 163,
and the new site N. of the Qbda. Gde. lives in S.P.S.
also owns lot 465

Roberto Paz (son of Benjamin Paz, owner of a finca near
La Cezuma near La Chupra) owns the new site N. of
newly found site N. of the Qbda. Gde. - 1/2 of the road,
N. of lot 171.

walked around the finca area checking
out sites for his project and for 1956. Site 466,
a Teotihuacan center composed of fairly large platform
surrounding a patio - like a site at Chame
residential group with large, low domes + in
good shape. Site 466 basically lacked fire or
moderately chime gran, OK for visibility,
but it is possible that the 2 N.-most
str. are gone. The road cut through
the 2" layer) on the N. site, rather good
eroded stench (incl. some red-shipped
spherules), chert, + white plaster along
with possible foundation line of cobbles (on the
N. side of the road).

Followed the old, newly cleared, (for
short stretch at least) road - Sigapa and
then turned S to climb the low N. slope
projection of the U-bull's enclosure; site 262
on the left the line of the hill between
it + the ~~low~~ road (clear to red) found an artifact

1959

Dear Mr. [Name] [Address] [City] [State] [Zip]
[Faint handwritten text, mostly illegible]

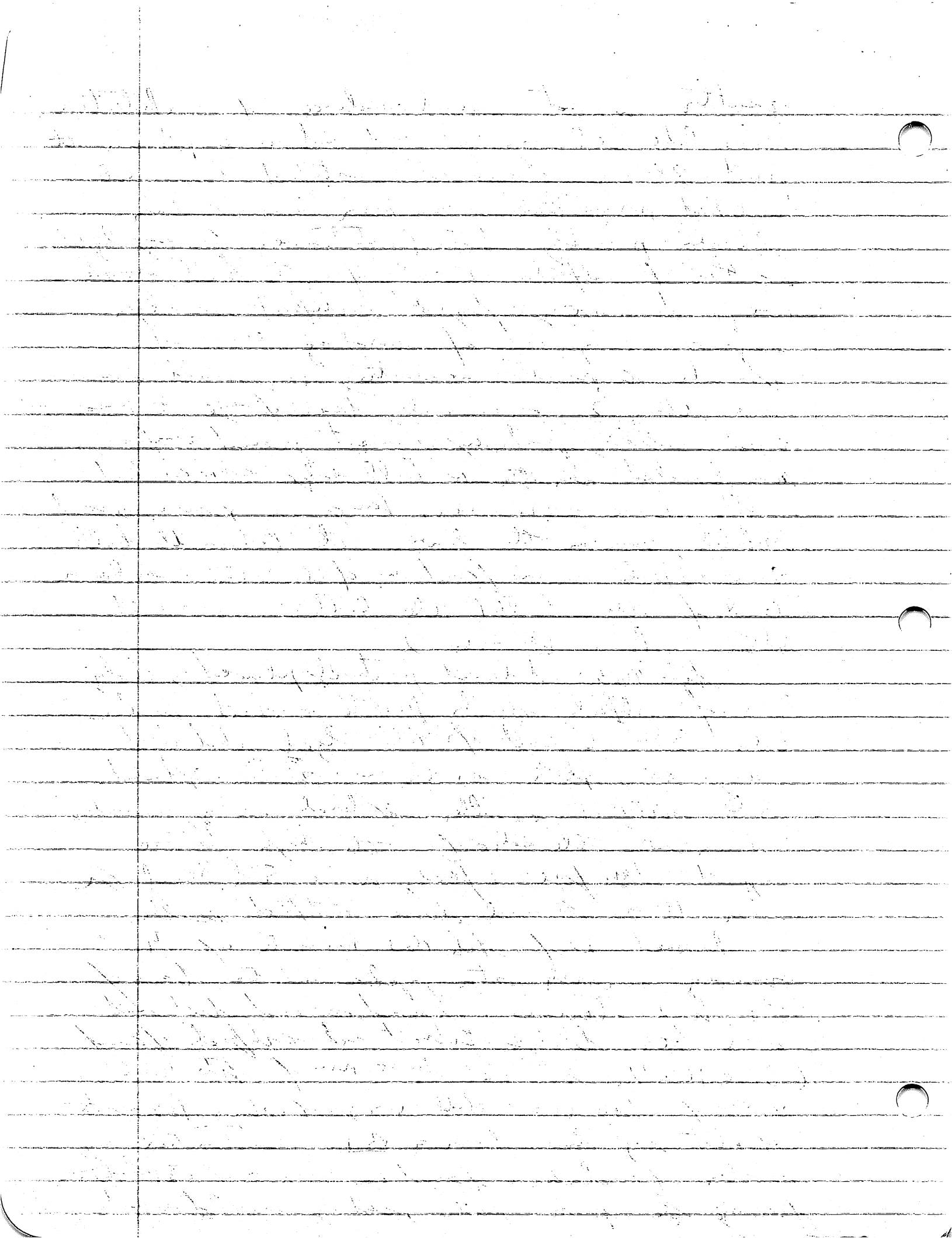
[Faint handwritten text, mostly illegible]

scatter of not much evidence of architecture,
tealike but now placed at some pt. in the
past. S. of chazotte artifact is a well-
matched projectile made from a chert
block - possibly late postclassic. A very light
scatter of artifacts. Only of the hill, and
we found a very light artifact scatter
composed of chert. erected
sheds. A possible cemetery, very well, and
more than 2m or a mile, built of lg. to med.-
sized cobbles, flush up recent ground surface,
was located on the N. hill edge associated
with some ceramics. The grain very good
visibility, seen on the lower site below the hill.
Great artifacts were found W. of the "site" on lower
level of the hill (the latter's summit
slope down E. - S.W.).

Site 163, at least partially plowed yielding
of artifacts, chert, perlite + chert. Tealike
L.C. S. of B. part of site. Lg. disturbed
row ca 3 plots on the N. still extent.

S. of artifact scatter extends along + under
down over the edge of the high terrace
support. Some fire + pieces N. of El Skel for
ca 100m. No med. dense artifact scatter.

Invest. N. of site 163 is a site up ± 4
surrounding structure, place at the base of
the high terrace, plowed around but not
over the bldg. Substantive artifacts found
(Site 162?). Site 161 to the N. of site 162? +
N. of site 163, still in a good stage. Remnants
of what may have been a B.I. construction of
a stone foundation. Found ca. 5m N. of the platform
forming the main patio, cut by an old wall



possibly part of an old ~~Goble~~ Goble. Goble
channel. One clade found here in well -
ca. 0.7m by 2. For artifacts on the
surface.

El Kal looks pretty well preserved
(only visited the ~~main~~ main gyp. +
not the WB. either). Located ca. 100m
n of El Kal along terrace edge overlooking
Goble. Goble on S of that channel. 2
cattle ~~str.~~ plots in a line. Green into.
Goble ~~str.~~ ^{Cattle pasture} noted here. well-cleaned, good visit.
Located ca 350m n of hte (71), E of the
road, near the B. hills. another new into.
11 str. (much cement) very small 2
adjacent pasture w/ 1 best plot. 1.5m on the
W + 1.5m on the S, on W. Gully just preserved.
chert, n. str., leads to here but stones
rolled out of it. looks like a LCI. p. gyp.
where bldgs. espec. on B. ridge, took edge
of the B. S. down to create higher
steeper ridge on the W. well-cleaned,
good visibility. The pasture itself runs 50-100m
w/ 1 best on W. Cattle pasture Sec 5.
Revisited Pelvarezi - best cleared,
good visibility.

On the W of Pelvarezi (hte 308), a cleared
fld. w/ ~~remnants~~ remnants of units
ca. 150m n/w of Pelvarezi on W. side of
the road leading W. 3 place. here small
plateau are still here (ca. 1m high, but
it looks like very cement. rolled to the
part of destruction. but for very excellent
visibility, LCI. + possibly some BCI. (Chilange/Umuc)
starch on the surface. Probably are held several p. gyp.
ca. 12 str. in all, Sec 5.

1. The first part of the paper is a
review of the literature on the
topic of the paper.

2. The second part of the paper is a
description of the data used in the
study.

3. The third part of the paper is a
description of the methods used in the
study.

4. The fourth part of the paper is a
description of the results of the study.

5. The fifth part of the paper is a
discussion of the results of the study.

6. The sixth part of the paper is a
conclusion of the study.

Site 162 (cont.)

Cobble concentration mostly
near creek all
bldgs; sand grain
visibility on the plate;
excellent in the
plowed area or the plowed
w. good in the
area covered w/
grasses etc. B.

A few scattered large to
medium sized cobbles to
the E, N, SW, + W.
Owner: Roberto (Alberto?)

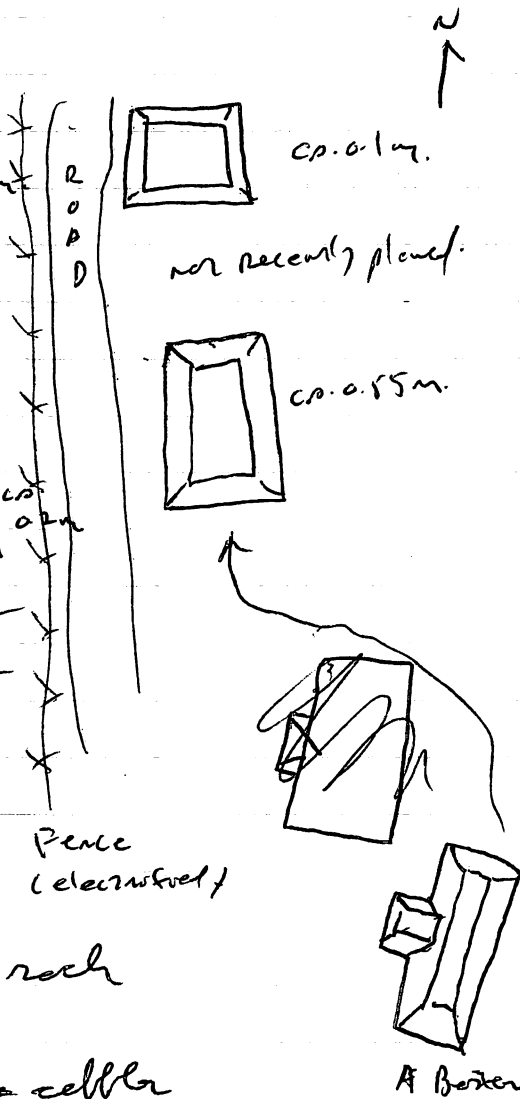
Basement.

Grass - green, dark
brown soil, ~~to~~ no rock
outcrops noted.

Found the large, as cobbles
lying around the area look like boulders - reddish
brown - splintered?

The whole. Made. has no. 1500 to the N.

Cattle pasture E of the fence, w. plowed for
something, but?



file 472, 6/13/95

Building stones include 4 livestock chumbr, relatively small for the most part, along w. / a few pieces of vancouverian basalt cobbles as well as other unidentified stones.

short likely the rigidity of the building, stores
derive from the nearly (ca. 150 m to the E) belt where
intercepted through the the thin rock.

Owner - Roberto Paz - S.P.S. (near Benjamin Perez.)

The str. flanks facing into the path (especially
 str. 472-6+7, are higher than their non-path sides,
 possibly a result of differential soil build up on the
 upslope, non-path sides + erosion on the opposite flanks.
 str. 472-6: big hole on the SW corner covering most of
 the S. 1/2 of the W. flank. str. 472-4: a hole on the
 E. corner. str. 472-8: disturbed by tree ^{on} nest on the
 W. side. str. 472-1: ^{apparently} red bed of stone while str. 472-2's
 NW corner may have been disturbed (cause?).

The ground slopes down gradually
E-SW to N-S, the 472 seems to be located on
a colluvial fan which extends for quite a distance
N. toward the Gbd. Zepeto but stops just S. of here.

Overlap the upper Chan. Terrace to the S.W. called
from N. cont. slope. Very good. No. side of 1 path more clear. The path
Cattle pasture, dense grass + poor visibility on
the S. (Ltr. 472-4, 8, 9) lower grass + better
visibility on the N. (the rest of the site is ok. to
poor visibility).

Feeder like a fairly large, Swiss, tort. Cl.
 into w/ 3 adjoining patch groups - ltr. 472-1+7,
 the main cluster w/ subclustering notes on the S
 (ltr. 472-8+9) + E. (ltr. 472-10/12); ltr. 472-13
 seem to be an isolate on the N.E. ltr. 472-10/13 are
 low + understated

surface collector, general surface, 472 A/OI.

Soil: cultural layer fine not very rich on the surface
here under / attracts very heavy downslope

7/11/1974 27th July

1. A large number of birds were seen in the area of the lake, particularly in the morning. The birds were mostly of the species *Actitis hypoleucos* and *Tringa erythrorhynchos*. The birds were seen in the area of the lake, particularly in the morning.

2. The birds were seen in the area of the lake, particularly in the morning. The birds were mostly of the species *Actitis hypoleucos* and *Tringa erythrorhynchos*. The birds were seen in the area of the lake, particularly in the morning.

3. The birds were seen in the area of the lake, particularly in the morning. The birds were mostly of the species *Actitis hypoleucos* and *Tringa erythrorhynchos*. The birds were seen in the area of the lake, particularly in the morning.

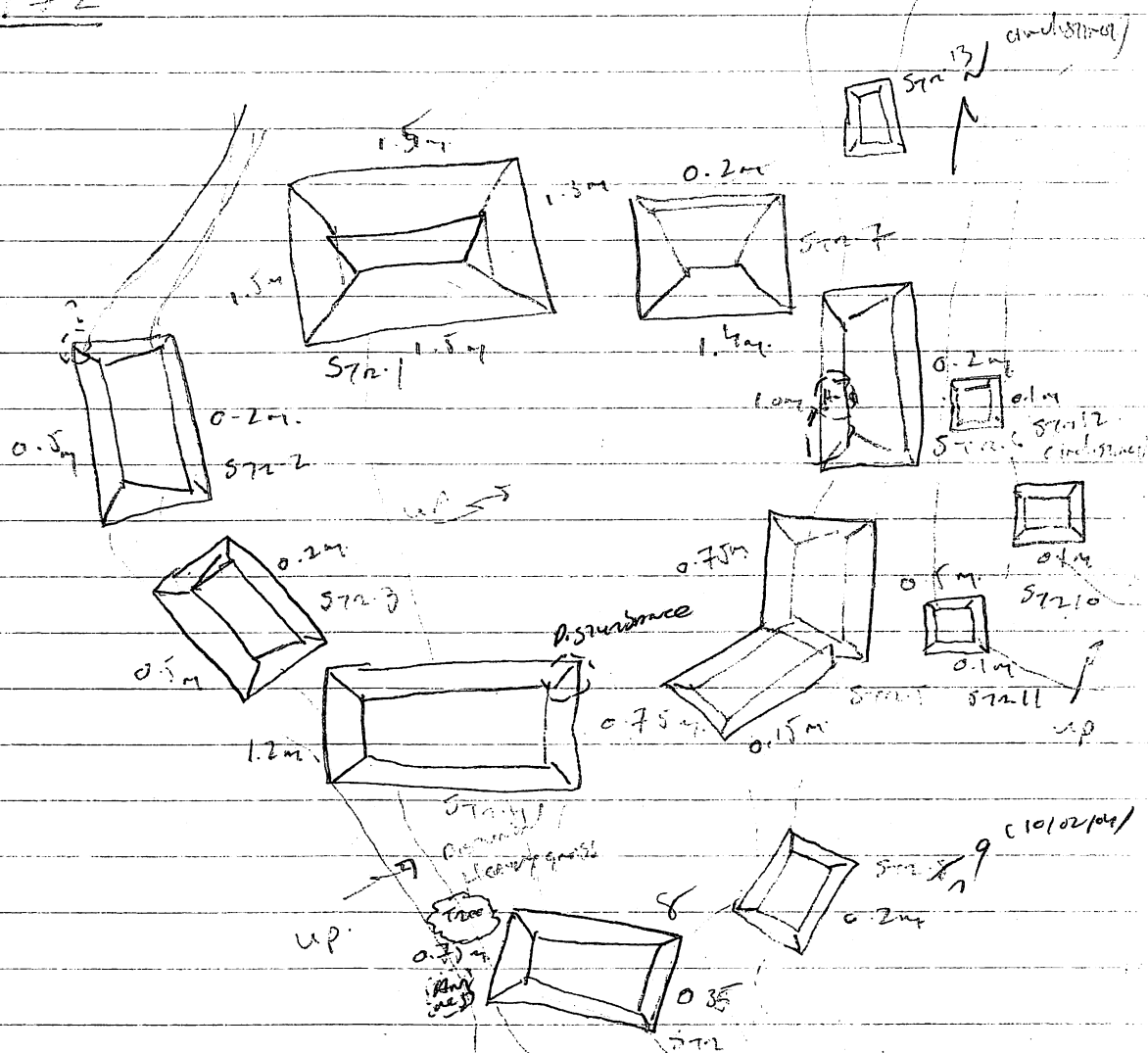
4. The birds were seen in the area of the lake, particularly in the morning. The birds were mostly of the species *Actitis hypoleucos* and *Tringa erythrorhynchos*. The birds were seen in the area of the lake, particularly in the morning.

5. The birds were seen in the area of the lake, particularly in the morning. The birds were mostly of the species *Actitis hypoleucos* and *Tringa erythrorhynchos*. The birds were seen in the area of the lake, particularly in the morning.

6. The birds were seen in the area of the lake, particularly in the morning. The birds were mostly of the species *Actitis hypoleucos* and *Tringa erythrorhynchos*. The birds were seen in the area of the lake, particularly in the morning.

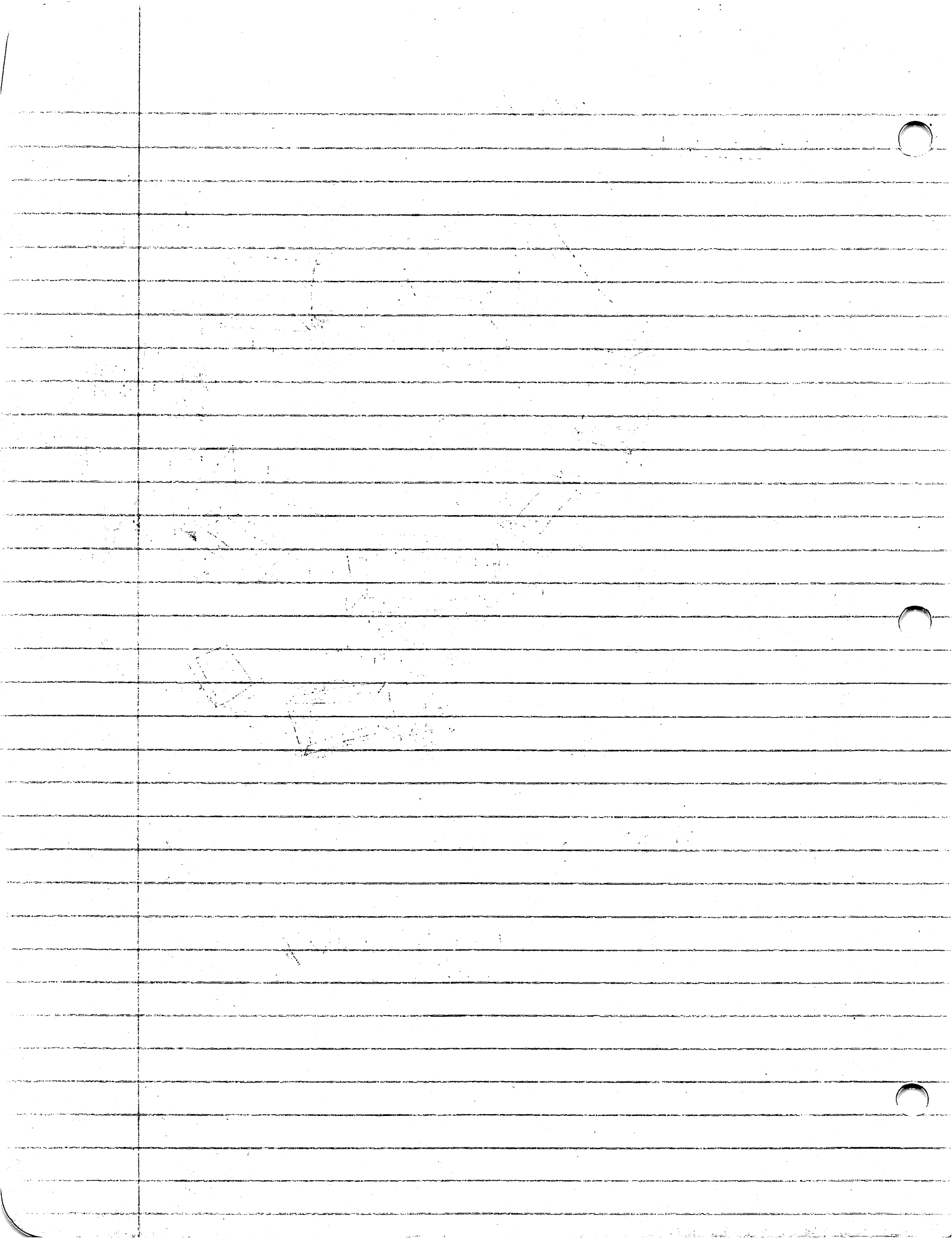
7. The birds were seen in the area of the lake, particularly in the morning. The birds were mostly of the species *Actitis hypoleucos* and *Tringa erythrorhynchos*. The birds were seen in the area of the lake, particularly in the morning.

Size 472



Sheric, not to seeds.

moderately heavy gas,
candle pressure, ok visibility



Site 472, 6/13/55

Point			4	Distance
Str. 7 SE	1		3140	9.65 m
Str. 7 NE	2		3560	13.0
Str. 7 NW	3		3430	17.45
Str. 1 NE	4		3400	22.45
Str. 1 SE	5		3120	18.20
Str. 1 SW	6		3070	25.10
Str. 4 N	7		2870	22.80
Str. 4 E	8		2670	18.15
Str. 4 S	9		2620	23.90
Str. 5 projection NW	10	1	2550	16.40
Str. 5 projection SW	11	2	2400	18.90
Str. 5 projection/Jct. main NW	12	3	2550	12.30
Str. 5 NE	13	4	2500	6.85
Str. 5 SE	14	5	2040	10.50
Str. 10 SW	15	1	1990	11.40
Str. 10 SE	16	2	1800	11.90
Str. 10 NE	17	3	1790	8.50
Str. 11 W	18	4	1600	10.60
Str. 11 S	19	5	1590	13.70
Str. 11 E	20	6	1490	14.30
Str. 12 SE	21	1	1300	11.30
Str. 12 SW	22	2	1340	8.35
Str. 12 NW	23	3	1150	7.50
Str. 6 SE	24	✓	1700	6.20
Str. 6 Turns NW	25		1020	3.30
Str. 6 NE	26		150	7.85
Str. 6 NW	27		3320	7.05
Str. 6 intersects hde-N	28		3120	3.90
Str. 13 SE	29	1	120	11.10
Str. 13 NE	30	2	210	14.60
Str. 13 NW	31	3	130	15.15
Station 1 - Station 2	32		3010	23.55
Station 1 - Station 3	33		2460	23.80

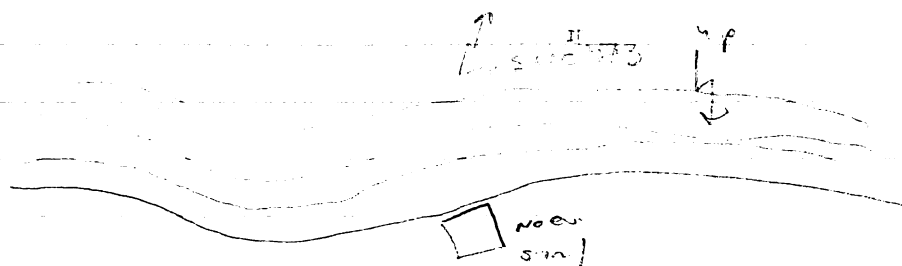
Time	Temp	Wind	Clouds	Pressure	Humidity	Visibility	Remarks
0000	50.0	0.0	0.0	30.0	100	10.0	Clear
0100	49.5	0.0	0.0	30.0	100	10.0	Clear
0200	49.0	0.0	0.0	30.0	100	10.0	Clear
0300	48.5	0.0	0.0	30.0	100	10.0	Clear
0400	48.0	0.0	0.0	30.0	100	10.0	Clear
0500	47.5	0.0	0.0	30.0	100	10.0	Clear
0600	47.0	0.0	0.0	30.0	100	10.0	Clear
0700	46.5	0.0	0.0	30.0	100	10.0	Clear
0800	46.0	0.0	0.0	30.0	100	10.0	Clear
0900	45.5	0.0	0.0	30.0	100	10.0	Clear
1000	45.0	0.0	0.0	30.0	100	10.0	Clear
1100	44.5	0.0	0.0	30.0	100	10.0	Clear
1200	44.0	0.0	0.0	30.0	100	10.0	Clear
1300	43.5	0.0	0.0	30.0	100	10.0	Clear
1400	43.0	0.0	0.0	30.0	100	10.0	Clear
1500	42.5	0.0	0.0	30.0	100	10.0	Clear
1600	42.0	0.0	0.0	30.0	100	10.0	Clear
1700	41.5	0.0	0.0	30.0	100	10.0	Clear
1800	41.0	0.0	0.0	30.0	100	10.0	Clear
1900	40.5	0.0	0.0	30.0	100	10.0	Clear
2000	40.0	0.0	0.0	30.0	100	10.0	Clear
2100	39.5	0.0	0.0	30.0	100	10.0	Clear
2200	39.0	0.0	0.0	30.0	100	10.0	Clear
2300	38.5	0.0	0.0	30.0	100	10.0	Clear

Site 472 6/13/95

p. 2

	Point		ϕ	Distance
→	3 Str. 8 NW	1	1 269°	7.15
"	Str. 8 SW	2	2 267°	12.00
"	Str. 8 NE	3	3 219°	6.90
3	Str. 9 NW	4	4 190°	7.15
3	Str. 9 NE	5	5 165°	6.25
3	Str. 9 SE	6	6 162°	11.35
→	2 Str. 2 NW		1 342°	13.50
2	Str. 2 SW		2 313°	13.30
2	Str. 2 SE		3 309°	7.15
2	Str. 3 NE		4 289°	5.95
2	Str. 3 NW		5 287°	10.80
2	Str. 3 SW		6 262° = 262°	11.20

6/13/75



Site 474, covered in medium-high grass, ^{around} cattle pasture, situated atop a w. projection of the B. hill. Site 262 is ca. 275m to the S. on the other side of the hill, site 473 is roughly 200m to the N + ca. 7m below the hill summit on which site 474 is located. The G. lds. ridge is ca. 450m to the N, is right of site 474. The hill-top slopes up gradually to the E, numerous outcrops, some at least seem to be limestone. Ground ^{vegetation} visibility is ok. to poor. Much of the grass is high but fairly well spaced allowing some view of the ground surface.

The single structure measured. 2m square ~~area~~ is oriented 331°, and has no elevation. Str. 474-1 is cultured with rounded cobbles, unlike the 4 stones that predominate on the hill, some of the cobbles may be limestone though no one stone type seems to be more common than the others - the rest I could not i.d. the rest. The center of the square is largely cleared of stones though a few small, 4 rocks were noted here forming no clear pattern. The ground slopes away sharply to the N and, more gradually to the S, + slopes off gradually to the E + W. A few grassed shrubs were found here (part of 474 + A101.1).

Guillermo Wilfredo + Oscar Zelaya of Ref. + S.P.S. respectively

The first part of the document is a list of names and dates, which appears to be a record of some kind. The names are written in a cursive script, and the dates are in a more formal, printed style. The list is organized into columns, with names in the first column and dates in the second column.

The second part of the document is a series of paragraphs of text, also written in cursive. The text is somewhat difficult to read due to the handwriting, but it appears to be a narrative or a report of some kind. The paragraphs are separated by small gaps, and the text is written in a consistent style throughout.

The third part of the document is a list of names and dates, similar to the first part. This list is also organized into columns, with names in the first column and dates in the second column. The handwriting is consistent with the rest of the document.

The fourth part of the document is a series of paragraphs of text, similar to the second part. The text is written in cursive and appears to be a continuation of the narrative or report from the second part. The paragraphs are separated by small gaps, and the text is written in a consistent style throughout.

Site 474 (cont) - artifacts - very few, continue to be found
ca. 40 m down slope to W of the str. + for ca. 20 m up slope to
the E/S.E. Probably all part of a fairly small, short-
lived occupation - a fld. house? Shards are fairly
eroded - possibly L.C. 11. The Chayen local bed - very well-
type designation is tentative.

3rd soil, where plowed (on the lowest hill remnant
to the W. is fairly rocky. 2nd soil still looks
pretty fine + brown.

Site 475 (6/13/55) - ca. 150 m W. of site 473 on the same
flat terrace surface ca. 175 m S. of the 9th grade. Grid +
right next to + S. of the current road / track to
the S. Covered or moderately dense, medium-
high grass and plowed (Site 475-1) have been
plowed over + disturbed. Site 475-2 to the W. has
not been so much. Plowed area to the W. + E.
have ok visibility where plowed, otherwise poor ground
visibility. Current use seems to be animal pasture.
Site line of what I think is the old road + border
the site on the S. though artifacts continue to be
found for ca. 20 m S. of this old fence line.
Artifacts, few + eroded, continue to be found
for ca. 30 m W. + E. of the 2 mch. + are located
out in the current road. Site soil here is fairly
black to dark gray + fine-textured, looks like
the kind of earth found on limestone bedrock.
2 ± clear platforms built primarily of river
cobbles and scattered rubble to W. + E. suggesting
that the buildings were once located here but
have now been plowed under.

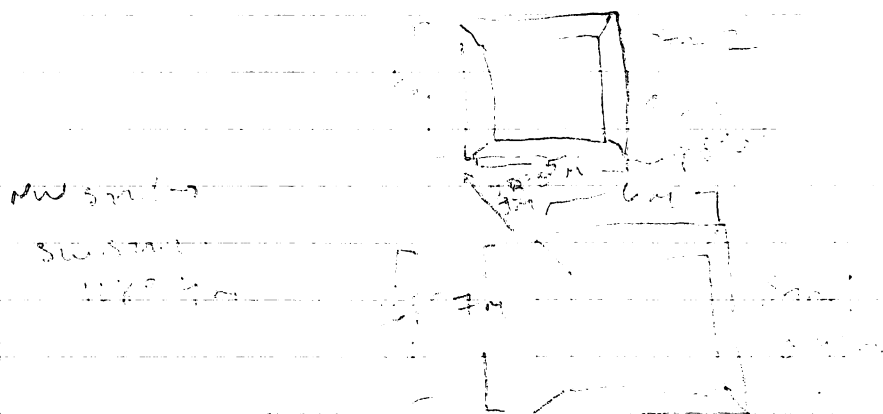
Owner is Oscar + Ampelio Zelaya (the
same people who own sites 473, 474, 263 + 466.

... ..
... ..
... ..
... ..
... ..
... ..
... ..
... ..
... ..
... ..

... ..
... ..
... ..
... ..
... ..
... ..
... ..
... ..
... ..
... ..

... ..
... ..
... ..
... ..
... ..
... ..
... ..
... ..
... ..
... ..

... ..
... ..
... ..
... ..
... ..



Note that the field immediately N. of the above 2 platforms, ca. 10m distant right across the road to the highway, has been plowed recently all the way to the ca. 5m steep drop to the Glde. Glde. floodplain. There are scattered shelly lithics, & possible concentration areas (cobbles) found - this zone lies ca. 75m N. of the platform, 10m to the N. + 5m to the NW. Very dispersed, possibly by the plowing. No clear concentrations. Included in part of site 475 though the concentration continues on for 3. as to the W. edge of site 473. 2 well-noted proj. pt. frags. made of blade. A few amount of chert, which is very noted in the field, not all collected. A shallow, shaly wash is located ca. 50m N. of the site 475 platform, running N.-S. to the Glde. Glde. bed is fine grained, possibly of alluvial origin (the Glde. Glde. - Steel is visible). 5m material from the N. field is being collected & logged in lot 475A/102. Wellpres + Oscar Zelazki own.

Note that site 162 seems to have 4 extent str. running - part of the largest block, or the 50.

The first of the three parts of the book is a history of the development of the theory of the structure of the atom. It begins with the discovery of the electron by Cathode ray experiments and the discovery of the nucleus by Rutherford's alpha particle experiments. It then discusses the development of the quantum theory of the atom, starting with Bohr's model and ending with the modern quantum mechanical theory. The second part of the book is a discussion of the properties of the atom, such as its size, mass, and energy levels. The third part of the book is a discussion of the applications of the theory of the structure of the atom, such as in the field of spectroscopy and in the development of the atomic bomb.

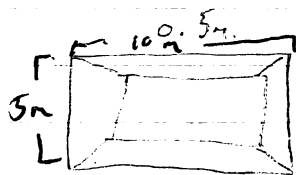
The book is written in a clear and concise style, and it is suitable for students of physics and chemistry. It is a valuable reference work for anyone interested in the structure of the atom.

The summit was exposed over \pm the S. $\frac{1}{2}$ of the str. It seems, here, to consist of a single, large room defined by well-built cobble walls. A narrow (ca. 0.36 m across \approx E.-W.) shelf runs along the N. west of the E. extent of the room, from Versailles to the SE. exterior room corner. There is a clear set back in the S. room wall as well as in the E. W.-one. A low, relatively indistinct raised cobble surface fills most of the exposed floor area in the S. room, from Versailles almost to the W.+S. walls, this feature clear running to + apparently abuts the E. room wall. Versailles itself looks like a step - out that may, in the matching set step - out in the W. wall, have defined passage between a S.+ E. (unexplained) room. The narrow shelf noted in the E. room wall is continued on the S. side of Versailles ~~though~~, though here it is ca. 0.2 m wide + steps 0.23 m E. of the W. termination of Versailles.

3 terrace, the upper - most of which (Bessuris) may be the W. side of the W. summit/room wall + the lowest of which - C.B.E. ~~room to terrace~~ is made of horizontally set C.B.'s over the exposed 1 m width of, against the W. side. Possible signs of earlier construction ~~found~~ protrude slightly out below C.B.E. - - the cobbles look like those seen in L'Ency + used in the earlier C.B.E. floor that lies below + seem to run under the basal E. step. Shards/artifacts rare out in abundance below construction in the W., fewer under the ^{colony} floor on the E.

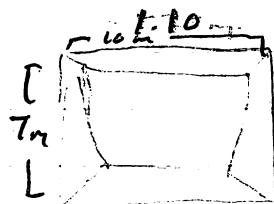
1. The first part of the paper is a review of the literature on the topic of the effects of the environment on human health. This section is divided into two main parts: the first part discusses the physical environment, and the second part discusses the social environment. The physical environment section covers topics such as air pollution, water pollution, and noise. The social environment section covers topics such as poverty, social inequality, and stress. The second part of the paper is a discussion of the methods used in the study. This section describes the data sources, the statistical methods used, and the limitations of the study. The third part of the paper is a discussion of the results of the study. This section presents the findings of the study and discusses their implications for public health. The final part of the paper is a conclusion. This section summarizes the main findings of the study and provides recommendations for future research.

Site 47 (Hill 175)



0.75m

ST-1



1.5m

ST-2

ST-1 5m N-S

10m E-W

Aligned 15°

NW corner ST-2 to NE corner ST-1 14m, 345°0'

ST-2 7m N-S

10m E-W

oriented 19°

Constructed largely of medium-sized river cobbles, a few & stones noted. ± well-preserved, some plowing seems to have occurred ^{immediately} N. of the str. but not on them. Both occupy the edge of a low (ca. 1.0m high) terrace of the Gbda Grade, about the channel of which, ca. 75m to the S. (Bogovin's cattle corral + shed are ca. 175m to the WSW across the Gbda Grade). The site & immediately flanking are in low grass, good to excellent visibility, used for animal pasture. Site 48: El Gal, next fld. to the E, ca. 100m distant. Site 47: The mgy, in fact, lies on either of the larger centers, soil is fine, dark brown, possibly river-deposited. Scattered cobbles & undulations immediately N. of the site, between it & the quebrada's channel, imply

[illegible]

1: 10.54.9182

The first thing I noticed when I stepped
 out of the plane was the cold air. It was
 a relief after the warm cabin. I looked
 around and saw a few people standing
 near the entrance. A man in a suit
 was talking to a woman. They both
 looked nervous. I walked towards them
 and they both smiled. The man said
 "Welcome to New York. I'm John."
 The woman said "I'm Mary. This is
 our first time here. We're a bit
 lost. Can you help us find our
 hotel?" I nodded and said "Sure, I'll
 show you the way. It's not far from
 here." They followed me and I showed
 them to the hotel. They were very
 grateful. I said "Good luck and
 enjoy your stay in New York." They
 waved and said "Thank you very
 much." I watched them go and
 felt a sense of accomplishment.

Site 477 (cont.)

that this low-lying zone is part of the Glde. Grande's floodplain. There seems to be a low (ca. 0.75 m high), narrow, natural level paralleling the Glde. Gde. on the S. just S. of Site 475. There may have been other str. in the area - suggested by a few scattered but embedded cobbles in the vicinity of str. 476-1+2 but no clear architecture. No artifacts collected or noted.

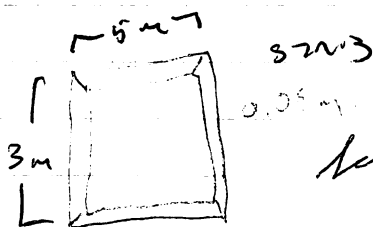
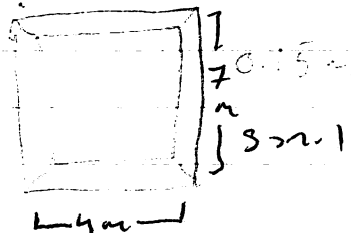
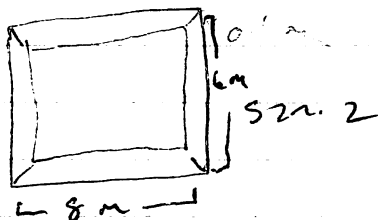
Site owner - Roberto Bogran. the E. limit of his property where it abuts Pablo Mejia's land.

The land is fairly flat to the S; dropping off very gradually in this direction.

Site placed cluster, diagonally lined on land left Site 477, situated on the S. edge of the next ^{ascending} terrace N. of the Glde. Gde., ca. 150 m S. + 5 m above Site 476 + ca. 175 m NW of El Gal (Site 168) + about 5 m above that center. Covered in low, coarse grass (convinced pasture) OK str. + poor artifact / ground visibility. In the same long, narrow fld. as str. 476-1. The land atop the terrace is ± flat back to the N ending in a shallow, fairly wide (ca. 0.25 m deep x 4 m across) shallow, E-W running depression (channel) that is succeeded in turn by the next ascending terrace from which the land rises gradually to the N. → the herdsman's hill. Site "change" is ca. 35 m to the N. the Glde. Gde. ca. 225 m to the S. Owner is Roberto (Alberto?) Bogran. The terrace center is where it appears to be S. end of El Gal + 100 m. In quite a distance.

Construction or preparation of river cobbles. Soil looks light brown +, ± fine.

Site 477 (cont)



low limestone + vesicular basalt + mixed clasts

old building lines are indistinct, possibly some disturbance (plowing-caused?) around all the perimeter. A few cobbles, embedded but scattered near around the str., my hint at the presence of other buildings in the area. No clear sign of str., however. Plowing has taken B. of the str. but the str. seem to not have been disturbed.

str. 477-1 4m. E-W.
7m. N-S.
oriented 263°

SN. 477-2 NW. cor. → SN. 477-1 NE. cor. 9m; 11°.

SN. 477-2 6m N-S.
8m E-W.
Aligned 152°

SN. 477-3 SW. cor. → SN. 477-1 NE. cor. 9m; 285°
5m E-W.
3m N-S.
oriented 166°.

All distances read + alignments read at using a hand-held compass.

Site 478 (6/13/95) - low grass (annual pasture),
plowed, very good visibility, but there's not much
left to see. Scattered cobbles + artifacts (a few of
latter) distributed over an area of roughly 20m x
20m (irregular shape). Apparently the remnants
of a fairly small site located ca. 70m back (N)
of the terrace edge, the same terrace that
supports Site 477 ca. 200m to the E. 3 to 6 beds.
The site is ca. 200m to the S. and the hill rises ca.
400m to the N. (no intervening terrace or clear
sign of the drainage noted for Site 477 here).

The land is flat, ascending gradually at first
+ then more rapidly towards the hill on the S.

Plowing furrows run N.-S. across the flat.

Construction stone seems to have consisted
primarily of cobbles. Curved. Admitted (aborted?) Baysen
holes. Brown, relatively fine. Some rounded, built
cobbles + curved stones.

478A/C1 - general surface.

Site 479 - located ca. 175m ^{N.} of Site 478, ca. 50m
back (N) of the ^{edge of the} same terrace edge that supports
Sites 477 + 478. a single extant str. on top of which
piled a heap of cobbles ca. 0.5m high + 3m in
diameter (\pm). Higher than cobbles are scattered
around the str. along with a few artifacts
making for a site area measuring \pm 15 x 15m.

low grass (annual pasture), very good
visibility for str., Ck. for artifacts. Plowed N.-S.
across the flat. though the surviving str. itself
may not have been plowed over the summit;
the perimeter may ~~have~~ have been damaged.

Lesson - 6

1	2	3	4	5	6	7	8	9	10	11	12	13	14	15	16	17	18	19	20	21	22	23	24	25	26	27	28	29	30	31	32	33	34	35	36	37	38	39	40	41	42	43	44	45	46	47	48	49	50	51	52	53	54	55	56	57	58	59	60	61	62	63	64	65	66	67	68	69	70	71	72	73	74	75	76	77	78	79	80	81	82	83	84	85	86	87	88	89	90	91	92	93	94	95	96	97	98	99	100
---	---	---	---	---	---	---	---	---	----	----	----	----	----	----	----	----	----	----	----	----	----	----	----	----	----	----	----	----	----	----	----	----	----	----	----	----	----	----	----	----	----	----	----	----	----	----	----	----	----	----	----	----	----	----	----	----	----	----	----	----	----	----	----	----	----	----	----	----	----	----	----	----	----	----	----	----	----	----	----	----	----	----	----	----	----	----	----	----	----	----	----	----	----	----	----	----	----	----	-----

1	2	3	4	5	6	7	8	9	10	11	12	13	14	15	16	17	18	19	20	21	22	23	24	25	26	27	28	29	30	31	32	33	34	35	36	37	38	39	40	41	42	43	44	45	46	47	48	49	50	51	52	53	54	55	56	57	58	59	60	61	62	63	64	65	66	67	68	69	70	71	72	73	74	75	76	77	78	79	80	81	82	83	84	85	86	87	88	89	90	91	92	93	94	95	96	97	98	99	100
---	---	---	---	---	---	---	---	---	----	----	----	----	----	----	----	----	----	----	----	----	----	----	----	----	----	----	----	----	----	----	----	----	----	----	----	----	----	----	----	----	----	----	----	----	----	----	----	----	----	----	----	----	----	----	----	----	----	----	----	----	----	----	----	----	----	----	----	----	----	----	----	----	----	----	----	----	----	----	----	----	----	----	----	----	----	----	----	----	----	----	----	----	----	----	----	----	----	----	-----

1	2	3	4	5	6	7	8	9	10	11	12	13	14	15	16	17	18	19	20	21	22	23	24	25	26	27	28	29	30	31	32	33	34	35	36	37	38	39	40	41	42	43	44	45	46	47	48	49	50	51	52	53	54	55	56	57	58	59	60	61	62	63	64	65	66	67	68	69	70	71	72	73	74	75	76	77	78	79	80	81	82	83	84	85	86	87	88	89	90	91	92	93	94	95	96	97	98	99	100	101	102	103	104	105	106	107	108	109	110	111	112	113	114	115	116	117	118	119	120	121	122	123	124	125	126	127	128	129	130	131	132	133	134	135	136	137	138	139	140	141	142	143	144	145	146	147	148	149	150	151	152	153	154	155	156	157	158	159	160	161	162	163	164	165	166	167	168	169	170	171	172	173	174	175	176	177	178	179	180	181	182	183	184	185	186	187	188	189	190	191	192	193	194	195	196	197	198	199	200	201	202	203	204	205	206	207	208	209	210	211	212	213	214	215	216	217	218	219	220	221	222	223	224	225	226	227	228	229	230	231	232	233	234	235	236	237	238	239	240	241	242	243	244	245	246	247	248	249	250	251	252	253	254	255	256	257	258	259	260	261	262	263	264	265	266	267	268	269	270	271	272	273	274	275	276	277	278	279	280	281	282	283	284	285	286	287	288	289	290	291	292	293	294	295	296	297	298	299	300	301	302	303	304	305	306	307	308	309	310	311	312	313	314	315	316	317	318	319	320	321	322	323	324	325	326	327	328	329	330	331	332	333	334	335	336	337	338	339	340	341	342	343	344	345	346	347	348	349	350	351	352	353	354	355	356	357	358	359	360	361	362	363	364	365	366	367	368	369	370	371	372	373	374	375	376	377	378	379	380	381	382	383	384	385	386	387	388	389	390	391	392	393	394	395	396	397	398	399	400	401	402	403	404	405	406	407	408	409	410	411	412	413	414	415	416	417	418	419	420	421	422	423	424	425	426	427	428	429	430	431	432	433	434	435	436	437	438	439	440	441	442	443	444	445	446	447	448	449	450	451	452	453	454	455	456	457	458	459	460	461	462	463	464	465	466
---	---	---	---	---	---	---	---	---	----	----	----	----	----	----	----	----	----	----	----	----	----	----	----	----	----	----	----	----	----	----	----	----	----	----	----	----	----	----	----	----	----	----	----	----	----	----	----	----	----	----	----	----	----	----	----	----	----	----	----	----	----	----	----	----	----	----	----	----	----	----	----	----	----	----	----	----	----	----	----	----	----	----	----	----	----	----	----	----	----	----	----	----	----	----	----	----	----	----	-----	-----	-----	-----	-----	-----	-----	-----	-----	-----	-----	-----	-----	-----	-----	-----	-----	-----	-----	-----	-----	-----	-----	-----	-----	-----	-----	-----	-----	-----	-----	-----	-----	-----	-----	-----	-----	-----	-----	-----	-----	-----	-----	-----	-----	-----	-----	-----	-----	-----	-----	-----	-----	-----	-----	-----	-----	-----	-----	-----	-----	-----	-----	-----	-----	-----	-----	-----	-----	-----	-----	-----	-----	-----	-----	-----	-----	-----	-----	-----	-----	-----	-----	-----	-----	-----	-----	-----	-----	-----	-----	-----	-----	-----	-----	-----	-----	-----	-----	-----	-----	-----	-----	-----	-----	-----	-----	-----	-----	-----	-----	-----	-----	-----	-----	-----	-----	-----	-----	-----	-----	-----	-----	-----	-----	-----	-----	-----	-----	-----	-----	-----	-----	-----	-----	-----	-----	-----	-----	-----	-----	-----	-----	-----	-----	-----	-----	-----	-----	-----	-----	-----	-----	-----	-----	-----	-----	-----	-----	-----	-----	-----	-----	-----	-----	-----	-----	-----	-----	-----	-----	-----	-----	-----	-----	-----	-----	-----	-----	-----	-----	-----	-----	-----	-----	-----	-----	-----	-----	-----	-----	-----	-----	-----	-----	-----	-----	-----	-----	-----	-----	-----	-----	-----	-----	-----	-----	-----	-----	-----	-----	-----	-----	-----	-----	-----	-----	-----	-----	-----	-----	-----	-----	-----	-----	-----	-----	-----	-----	-----	-----	-----	-----	-----	-----	-----	-----	-----	-----	-----	-----	-----	-----	-----	-----	-----	-----	-----	-----	-----	-----	-----	-----	-----	-----	-----	-----	-----	-----	-----	-----	-----	-----	-----	-----	-----	-----	-----	-----	-----	-----	-----	-----	-----	-----	-----	-----	-----	-----	-----	-----	-----	-----	-----	-----	-----	-----	-----	-----	-----	-----	-----	-----	-----	-----	-----	-----	-----	-----	-----	-----	-----	-----	-----	-----	-----	-----	-----	-----	-----	-----	-----	-----	-----	-----	-----	-----	-----	-----	-----	-----	-----	-----	-----	-----	-----	-----	-----	-----	-----	-----	-----	-----	-----	-----	-----	-----	-----	-----	-----	-----	-----	-----	-----	-----	-----	-----	-----	-----	-----	-----	-----	-----	-----	-----	-----	-----	-----	-----	-----	-----	-----	-----	-----	-----	-----	-----

2010-2011

[Faint handwritten notes at the bottom of the page]

[illegible][illegible]

1. What is the main purpose of the study?

1911

[illegible]

[illegible]

[illegible]

1	2	3	4	5	6	7	8	9	10	11	12	13	14	15	16	17	18	19	20	21	22	23	24	25	26	27	28	29	30	31	32	33	34	35	36	37	38	39	40	41	42	43	44	45	46	47	48	49	50	51	52	53	54	55	56	57	58	59	60	61	62	63	64	65	66	67	68	69	70	71	72	73	74	75	76	77	78	79	80	81	82	83	84	85	86	87	88	89	90	91	92	93	94	95	96	97	98	99	100
---	---	---	---	---	---	---	---	---	----	----	----	----	----	----	----	----	----	----	----	----	----	----	----	----	----	----	----	----	----	----	----	----	----	----	----	----	----	----	----	----	----	----	----	----	----	----	----	----	----	----	----	----	----	----	----	----	----	----	----	----	----	----	----	----	----	----	----	----	----	----	----	----	----	----	----	----	----	----	----	----	----	----	----	----	----	----	----	----	----	----	----	----	----	----	----	----	----	----	-----

1. *Chlorophyll a* (Chl a) is the primary photosynthetic pigment in most plants and algae. It is a green pigment that absorbs light energy in the blue and red regions of the visible spectrum. Chl a is essential for the light-dependent reactions of photosynthesis, where it converts light energy into chemical energy in the form of ATP and NADPH.

[illegible][illegible][illegible]

1	2	3	4	5	6	7	8	9	10	11	12	13	14	15	16	17	18	19	20	21	22	23	24	25	26	27	28	29	30	31	32	33	34	35	36	37	38	39	40	41	42	43	44	45	46	47	48	49	50	51	52	53	54	55	56	57	58	59	60	61	62	63	64	65	66	67	68	69	70	71	72	73	74	75	76	77	78	79	80	81	82	83	84	85	86	87	88	89	90	91	92	93	94	95	96	97	98	99	100
---	---	---	---	---	---	---	---	---	----	----	----	----	----	----	----	----	----	----	----	----	----	----	----	----	----	----	----	----	----	----	----	----	----	----	----	----	----	----	----	----	----	----	----	----	----	----	----	----	----	----	----	----	----	----	----	----	----	----	----	----	----	----	----	----	----	----	----	----	----	----	----	----	----	----	----	----	----	----	----	----	----	----	----	----	----	----	----	----	----	----	----	----	----	----	----	----	----	----	-----

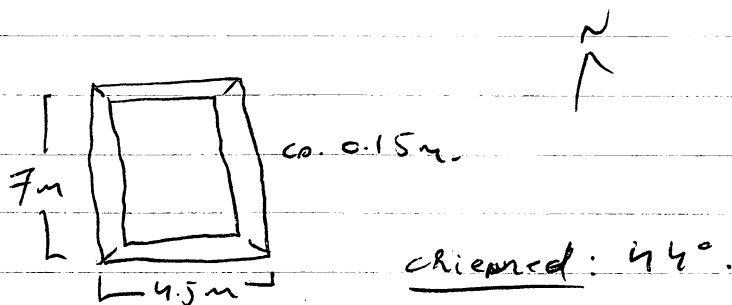
1	2	3	4	5	6	7	8	9	10	11	12	13	14	15	16	17	18	19	20	21	22	23	24	25	26	27	28	29	30	31	32	33	34	35	36	37	38	39	40	41	42	43	44	45	46	47	48	49	50	51	52	53	54	55	56	57	58	59	60	61	62	63	64	65	66	67	68	69	70	71	72	73	74	75	76	77	78	79	80	81	82	83	84	85	86	87	88	89	90	91	92	93	94	95	96	97	98	99	100
---	---	---	---	---	---	---	---	---	----	----	----	----	----	----	----	----	----	----	----	----	----	----	----	----	----	----	----	----	----	----	----	----	----	----	----	----	----	----	----	----	----	----	----	----	----	----	----	----	----	----	----	----	----	----	----	----	----	----	----	----	----	----	----	----	----	----	----	----	----	----	----	----	----	----	----	----	----	----	----	----	----	----	----	----	----	----	----	----	----	----	----	----	----	----	----	----	----	----	-----

1940-1941

1	2	3	4	5	6	7	8	9	10	11	12	13	14	15	16	17	18	19	20	21	22	23	24	25	26	27	28	29	30	31	32	33	34	35	36	37	38	39	40	41	42	43	44	45	46	47	48	49	50	51	52	53	54	55	56	57	58	59	60	61	62	63	64	65	66	67	68	69	70	71	72	73	74	75	76	77	78	79	80	81	82	83	84	85	86	87	88	89	90	91	92	93	94	95	96	97	98	99	100	101	102	103	104	105	106	107	108	109	110	111	112	113	114	115	116	117	118	119	120	121	122	123	124	125	126	127	128	129	130	131	132	133	134	135	136	137	138	139	140	141	142	143	144	145	146	147	148	149	150	151	152	153	154	155	156	157	158	159	160	161	162	163	164	165	166	167	168	169	170	171	172	173	174	175	176	177	178	179	180	181	182	183	184	185	186	187	188	189	190	191	192	193	194	195	196	197	198	199	200	201	202	203	204	205	206	207	208	209	210	211	212	213	214	215	216	217	218	219	220	221	222	223	224	225	226	227	228	229	230	231	232	233	234	235	236	237	238	239	240	241	242	243	244	245	246	247	248	249	250	251	252	253	254	255	256	257	258	259	260	261	262	263	264	265	266	267	268	269	270	271	272	273	274	275	276	277	278	279	280	281	282	283	284	285	286	287	288	289	290	291	292	293	294	295	296	297	298	299	300	301	302	303	304	305	306	307	308	309	310	311	312	313	314	315	316	317	318	319	320	321	322	323	324	325	326	327	328	329	330	331	332	333	334	335	336	337	338	339	340	341	342	343	344	345	346	347	348	349	350	351	352	353	354	355	356	357	358	359	360	361	362	363	364	365	366	367	368	369	370	371	372	373	374	375	376	377	378	379	380	381	382	383	384	385	386	387	388	389	390	391	392	393	394	395	396	397	398	399	400	401	402	403	404	405	406	407	408	409	410	411	412	413	414	415	416	417	418	419	420	421	422	423	424	425	426	427	428	429	430	431	432	433	434	435	436	437	438	439	440	441	442	443	444	445	446	447	448	449	450	451	452	453	454	455	456	457	458	459	460	461	462	463	464	465	466
---	---	---	---	---	---	---	---	---	----	----	----	----	----	----	----	----	----	----	----	----	----	----	----	----	----	----	----	----	----	----	----	----	----	----	----	----	----	----	----	----	----	----	----	----	----	----	----	----	----	----	----	----	----	----	----	----	----	----	----	----	----	----	----	----	----	----	----	----	----	----	----	----	----	----	----	----	----	----	----	----	----	----	----	----	----	----	----	----	----	----	----	----	----	----	----	----	----	----	-----	-----	-----	-----	-----	-----	-----	-----	-----	-----	-----	-----	-----	-----	-----	-----	-----	-----	-----	-----	-----	-----	-----	-----	-----	-----	-----	-----	-----	-----	-----	-----	-----	-----	-----	-----	-----	-----	-----	-----	-----	-----	-----	-----	-----	-----	-----	-----	-----	-----	-----	-----	-----	-----	-----	-----	-----	-----	-----	-----	-----	-----	-----	-----	-----	-----	-----	-----	-----	-----	-----	-----	-----	-----	-----	-----	-----	-----	-----	-----	-----	-----	-----	-----	-----	-----	-----	-----	-----	-----	-----	-----	-----	-----	-----	-----	-----	-----	-----	-----	-----	-----	-----	-----	-----	-----	-----	-----	-----	-----	-----	-----	-----	-----	-----	-----	-----	-----	-----	-----	-----	-----	-----	-----	-----	-----	-----	-----	-----	-----	-----	-----	-----	-----	-----	-----	-----	-----	-----	-----	-----	-----	-----	-----	-----	-----	-----	-----	-----	-----	-----	-----	-----	-----	-----	-----	-----	-----	-----	-----	-----	-----	-----	-----	-----	-----	-----	-----	-----	-----	-----	-----	-----	-----	-----	-----	-----	-----	-----	-----	-----	-----	-----	-----	-----	-----	-----	-----	-----	-----	-----	-----	-----	-----	-----	-----	-----	-----	-----	-----	-----	-----	-----	-----	-----	-----	-----	-----	-----	-----	-----	-----	-----	-----	-----	-----	-----	-----	-----	-----	-----	-----	-----	-----	-----	-----	-----	-----	-----	-----	-----	-----	-----	-----	-----	-----	-----	-----	-----	-----	-----	-----	-----	-----	-----	-----	-----	-----	-----	-----	-----	-----	-----	-----	-----	-----	-----	-----	-----	-----	-----	-----	-----	-----	-----	-----	-----	-----	-----	-----	-----	-----	-----	-----	-----	-----	-----	-----	-----	-----	-----	-----	-----	-----	-----	-----	-----	-----	-----	-----	-----	-----	-----	-----	-----	-----	-----	-----	-----	-----	-----	-----	-----	-----	-----	-----	-----	-----	-----	-----	-----	-----	-----	-----	-----	-----	-----	-----	-----	-----	-----	-----	-----	-----	-----	-----	-----	-----	-----	-----	-----	-----	-----	-----	-----	-----	-----	-----	-----	-----	-----	-----	-----	-----	-----	-----	-----	-----	-----	-----	-----	-----	-----	-----	-----	-----	-----	-----	-----	-----	-----	-----	-----	-----	-----	-----	-----

Site 479 (cont.) The terrace summit is flat - the
same nature of the terrain being the same as was noted
for Site 478 ~~except that~~; the G. lola. G. lola - ca
200m to the S. + the hill are. $\pm 400m$ to the N.

More cobbles are the primary construction
stone, vesicular basalt + rare unid. stones (may
also bear lime concretions [a white mark]
suggesting that they were pulled from the
G. lola. G. lola. where many stones have this
appearance.). Cueva (I think) is still Roberto
(Alberto?) Boguen.



479 D/C1 - General surface, mostly from the area line
of the fence ca. 15m W. of the str.

Site 480 (6/13/98) - have general ground cover,
visibility, + topographic location as Site 477/479.
Another well, much plowed here now
marked by a light scattering of artifacts + a dense
concentration of cobbles - no clear architecture.
Site 480 is right on the edge of the terrace,
row of str. cobbles extending down slope on
the S. The G. lola. G. lola. ca. 150m to the S.
the hill is 50m to the N. of Cueva R. (C.R.)
Boguen. Cobble are the primary building
stone, mostly well exposed here. 9x7m - dense
cobble concentration thus seen at Site 478 + 479 - ~~no clear~~
a small construction line still visible in the middle.

1. The first part of the paper is devoted to a general discussion of the problem.

2. The second part is devoted to a detailed analysis of the problem.

3. The third part is devoted to a detailed analysis of the problem.

4. The fourth part is devoted to a detailed analysis of the problem.

5. The fifth part is devoted to a detailed analysis of the problem.

6. The sixth part is devoted to a detailed analysis of the problem.

7. The seventh part is devoted to a detailed analysis of the problem.

8. The eighth part is devoted to a detailed analysis of the problem.

9. The ninth part is devoted to a detailed analysis of the problem.

10. The tenth part is devoted to a detailed analysis of the problem.

11. The eleventh part is devoted to a detailed analysis of the problem.

12. The twelfth part is devoted to a detailed analysis of the problem.

13. The thirteenth part is devoted to a detailed analysis of the problem.

14. The fourteenth part is devoted to a detailed analysis of the problem.

15. The fifteenth part is devoted to a detailed analysis of the problem.

16. The sixteenth part is devoted to a detailed analysis of the problem.

17. The seventeenth part is devoted to a detailed analysis of the problem.

18. The eighteenth part is devoted to a detailed analysis of the problem.

19. The nineteenth part is devoted to a detailed analysis of the problem.

20. The twentieth part is devoted to a detailed analysis of the problem.

21. The twenty-first part is devoted to a detailed analysis of the problem.

22. The twenty-second part is devoted to a detailed analysis of the problem.

23. The twenty-third part is devoted to a detailed analysis of the problem.

24. The twenty-fourth part is devoted to a detailed analysis of the problem.

25. The twenty-fifth part is devoted to a detailed analysis of the problem.

26. The twenty-sixth part is devoted to a detailed analysis of the problem.

27. The twenty-seventh part is devoted to a detailed analysis of the problem.

28. The twenty-eighth part is devoted to a detailed analysis of the problem.

29. The twenty-ninth part is devoted to a detailed analysis of the problem.

30. The thirtieth part is devoted to a detailed analysis of the problem.

31. The thirty-first part is devoted to a detailed analysis of the problem.

32. The thirty-second part is devoted to a detailed analysis of the problem.

33. The thirty-third part is devoted to a detailed analysis of the problem.

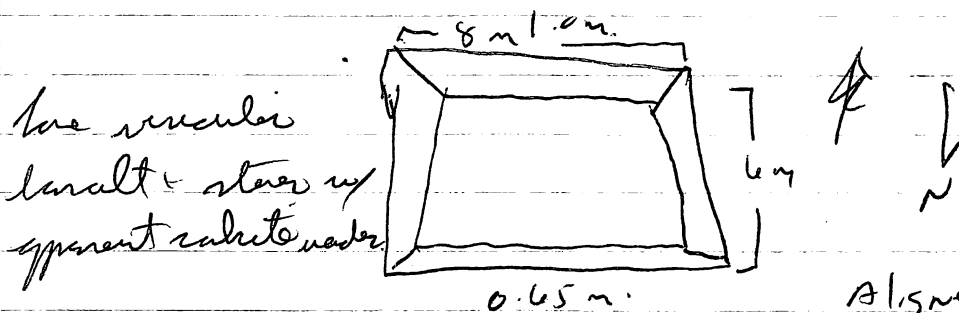
34. The thirty-fourth part is devoted to a detailed analysis of the problem.

35. The thirty-fifth part is devoted to a detailed analysis of the problem.

36. The thirty-sixth part is devoted to a detailed analysis of the problem.

Site 480 (cont.). Site 479 is ca. 150m to the E.
 Sites 477-480 seem to be part of a ± continuous
 line of small settlements following the G. lida. Yrde. by
~~the~~ - different from the generally larger settlements
 on the S. bank.

Site 481 (6/13/55) - a large, single str. located
 ca. 75m S. of the N. hill on the N. edge of the
 terrace supporting sites 477-480. The ground here
 is sloping up gradually S-SW. + down E-SW (equally
 gradually). Covered in low, dense grass (annual
 pasture) very good str. + ~~at~~ poor ground / artifact
 visibility. It looks like the land was plowed
 (furrows running N.-S.) but the str. seems to
 have been preserved. No artifacts noted or
 collected on the surface. Both ~~to~~ stones + cobbles
 seem to have been used in construction, in ±
 equal proportions. No signs of other buildings in
 the area. Site 477 lies ca. 200m to the SW.
Site 478 - 350m to the SSW, + the G. lida. Mde. -
 ca. 500m to the S.



Very odd location for a site here - well
 back from the quebrada. A shallow wash
 seems to erode from the hill ca. 65m to the
 N + runs NW-SW for a short distance before
 disappearing into the terrace surface.

The cover is R. (A.) Begonia.
 Soil is brown, somewhat rich (small stones &
 roots).

1. The first part of the paper is devoted to a general discussion of the problem.

2. In the second part, we consider the case of a single particle.

3. The third part is devoted to the case of a system of particles.

4. In the fourth part, we consider the case of a continuous medium.

5. The fifth part is devoted to the case of a system of continuous media.

6. In the sixth part, we consider the case of a system of particles and a continuous medium.

7. The seventh part is devoted to the case of a system of continuous media and a continuous medium.

8. In the eighth part, we consider the case of a system of particles, a continuous medium, and a continuous medium.

9. The ninth part is devoted to the case of a system of continuous media, a continuous medium, and a continuous medium.

10. In the tenth part, we consider the case of a system of particles, a continuous medium, and a continuous medium.

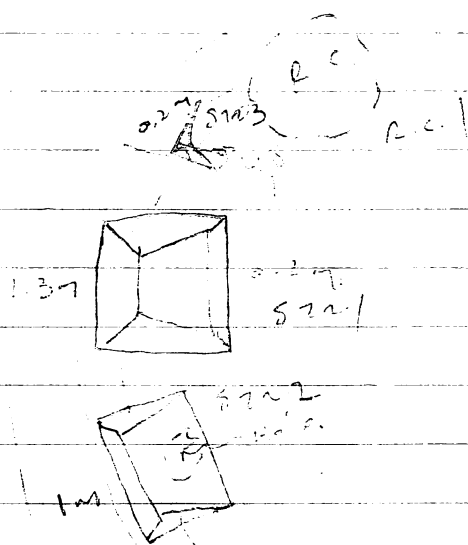
11. The eleventh part is devoted to the case of a system of continuous media, a continuous medium, and a continuous medium.

12. In the twelfth part, we consider the case of a system of particles, a continuous medium, and a continuous medium.

Site 482 (6/13/55) - located at the base of the
 N. hill, ca. 175m E of site 481 and \pm 8m above the
 lower, ca. 150m NW of site 477. The ground slopes
 off fairly steeply on the W at the site & margin
 + more gradually to the S, the land runs \pm flat
 to the N. to the hill, ca. 50m distant &
 more gradually to the E. towards a S. projection
 of the N. hill. Covered in low, dense grass,
 good str. & poor artifact visibility. Plowed
 all around the site (furrows running \pm N.-S.
 an electric fence runs along the site & E.
 margin. Animal pasture. Site owner is R.C.P.
 Beggs.

River cobbles & stone (limestone from fairly
 common as both forms) are the principal
 building materials.

Site 482. The. lies ca. 650m to the S. No
 other known water source nearby. A great
 new to the N. towards the Rio Chardoon
 another odd location. well back from the
 gulch - like site 481 in its location. No clear
 evidence in the immediate area.



P.C.1 may or may not be a
 str. - it looks like it
 was plowed & dry up -
 no clear lines. Str.

482-1 + 2 are certainly
 soil - largely caliche, not
 too coarse, brown.

about the 1st of March

the 1st of March 1831

the 1st of March 1831

the 1st of March 1831

the 1st of March 1831

the 1st of March 1831

the 1st of March 1831

the 1st of March 1831

the 1st of March 1831

the 1st of March 1831

the 1st of March 1831

the 1st of March 1831

the 1st of March 1831

the 1st of March 1831

the 1st of March 1831

the 1st of March 1831

the 1st of March 1831

the 1st of March 1831

the 1st of March 1831

the 1st of March 1831

the 1st of March 1831

the 1st of March 1831

the 1st of March 1831

the 1st of March 1831

the 1st of March 1831

the 1st of March 1831

the 1st of March 1831

the 1st of March 1831

the 1st of March 1831

the 1st of March 1831

the 1st of March 1831

the 1st of March 1831

Site 482

6/13/95

Point	Δ	Distance
Str. 2 SWC	1 266°	9.65 m
Str. 2 NWC	2 287°	7.10
Str. 2 NEC	3 241°	2.80
Str. 1 SEC	4 299°	2.75
Str. 1 NEC	5 35°	4.40
Str. 1 NWC	6 2°	7.70
Str. 3 SE	1 62°	7.35
Str. 3 SW	2 36°	9.20
Str. 3 NW	3 46°	11.75
Center Rock Conc. 1	4 80°	16.60

Diameter = 8.40 m

1916

511-2

2000

△

4209

22-1

505

SW2 S. 173

015

0.55

2 WA 5 At 2

085

011250

09A 582

25.6

PKS

0.00

024

22

2011-12-12

2000

Sept 13 1928

100

010

1000

1000

WV

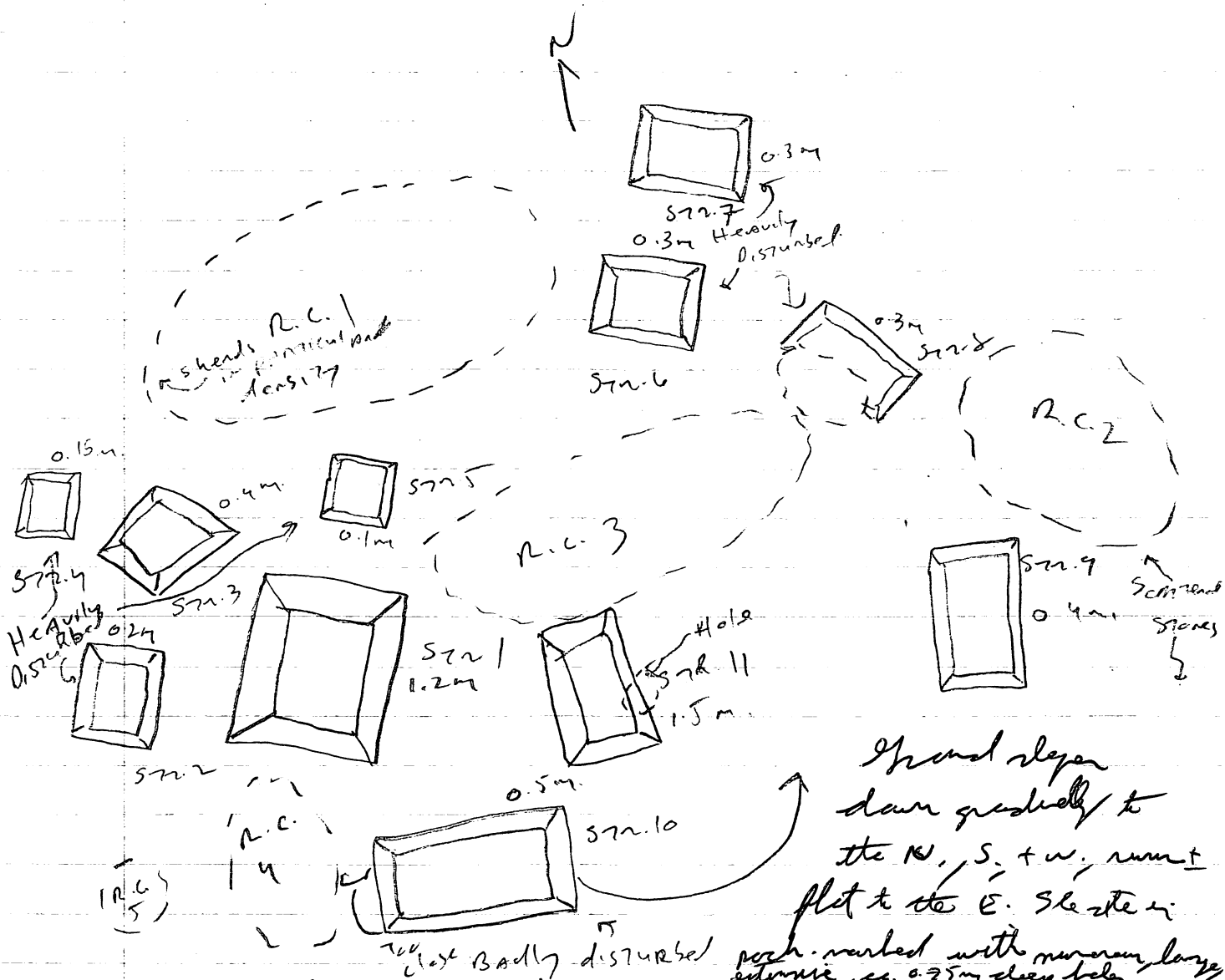
1. The first step in the process is to identify the problem or issue that needs to be addressed. This involves gathering information and understanding the context of the problem.

1026

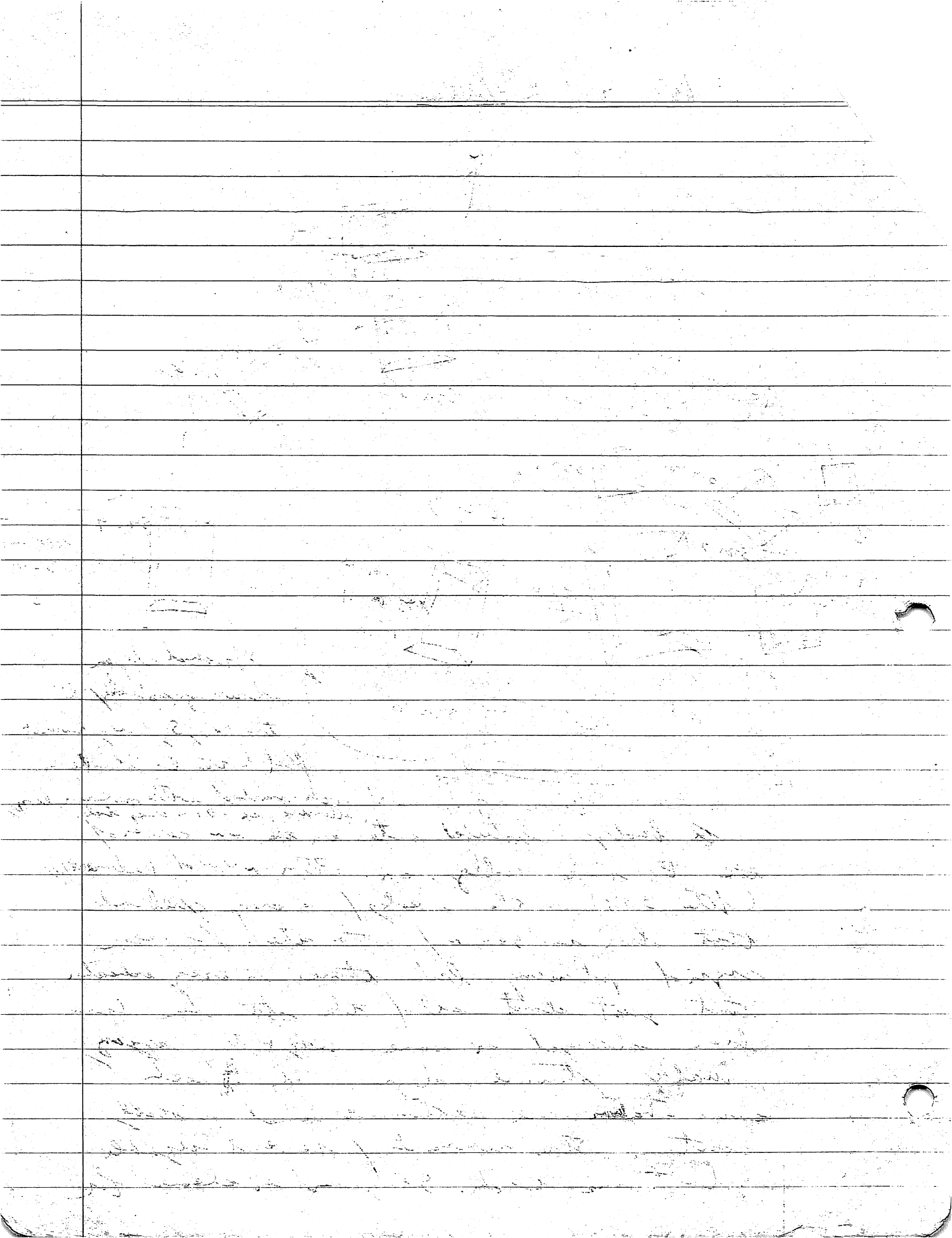
$\frac{1}{2} \times 6 = 3$

M. O. H. S. - 1950

Site 483 (6/17/95)



A badly disturbed note in the NW corner of the B. note valley, ca. 175m NNW of Palmaréjo (Site 338) on the S. edge of a deep quebrada that has ca. 50m N of the note. No clear sign of plowing but there is very evidence that just about all of the str. has been changed in some way + to varying, usually extensive, degrees. The rich concentrations are extensive and probably contain the remnants of several usable platforms each. The ground is cleared for



Site 483

6/17/95

Point			Δ	Distance
RC #5 - center (Diam 4.25m)			1 247°	34.0 m
Perimeter RC 4			2 248°	27.10 m
Perimeter RC 4			3 236°	24.0 m
"			4 225°	20.3 m
"			5 243°	18.5 m
"			6 249°	24.7
Str. 1	SEC	7	1 255°	23.7
	NEC	8	2 275°	20.0
	NWC	9	3 278°	28.4
Str. 2	SEC	10	4 273°	30.6
	NEC	11	5 279°	31.0
	NWC	12	6 279°	34.8
Str. 4	SWC	13	1 284°	38.0
	SEC	14	2 286°	35.1
	NEC	15	3 291°	36.3
Str. 3	NWC	16	4 291°	34.1
	NEC	17	5 297°	28.5
	SEC	18	6 287°	26.7
Str. 5	SWC	19	1 292°	22.5
	SEC	20	2 288°	19.1
	NWC	21	3 300°	21.9
RC1 - Perimeter.		22	4 302°	19.0
"		23	5 319°	33.1
"		24	6 350°	29.1
"		25	7 21°	31.6
"		26	8 42°	13.7
"		27	9 343°	11.1
RC3 perimeter		28	1 346°	7.5
"		29	2 280°	16.4
"		30	3 240°	16.1

SPRINT 881

0.445

0.445

0.445

0.445

0.445 - 0.445

0.445

0.445

0.445

0.445

0.445

0.445

0.445

0.445

0.445

0.445

0.445

0.445

0.445

0.445

0.445

0.445

0.445

0.445

0.445

0.445

0.445

0.445

0.445

0.445

0.445

0.445

0.445

0.445

0.445

0.445

0.445

0.445

0.445

0.445

0.445

0.445

0.445

0.445

0.445

0.445

0.445

0.445

0.445

0.445

0.445

0.445

0.445

0.445

0.445

0.445

0.445

0.445

0.445

0.445

0.445

0.445

0.445

0.445

0.445

0.445

0.445

0.445

0.445

0.445

0.445

0.445

0.445

0.445

0.445

0.445

0.445

0.445

0.445

0.445

0.445

0.445

0.445

0.445

0.445

0.445

0.445

0.445

0.445

0.445

0.445

0.445

0.445

0.445

0.445

0.445

0.445

0.445

0.445

planting, though nothing seems to have been
planted so far. Excellent to very good ground +
str. fertility. 483A/01 general surface
collection. Owner?

Most of the construction stones seem to
be medium-sized, & rocks, most are white, possibly/
likely limestone. Look is a fine dark brown (with
possibly limst) = look fertile. The road bordering
Palmaria on the N. border this site on the S.
thick, seen on the surface, and the site
plan, look like Clavie.

March 2nd 1900. Monday. April 1st 1900.

Left for the lake at 8:30 AM. The

weather was very pleasant. The

lake was very beautiful. The

view was very nice. The

water was very clear. The

sky was very blue. The

sun was very bright. The

air was very fresh. The

land was very green. The

water was very calm. The

view was very good. The

weather was very fine. The

lake was very nice. The

view was very beautiful. The

water was very clear. The

sky was very blue. The

sun was very bright. The

air was very fresh. The

land was very green. The

water was very calm. The

view was very good. The

weather was very fine. The

lake was very nice. The

view was very beautiful. The

water was very clear. The

sky was very blue. The

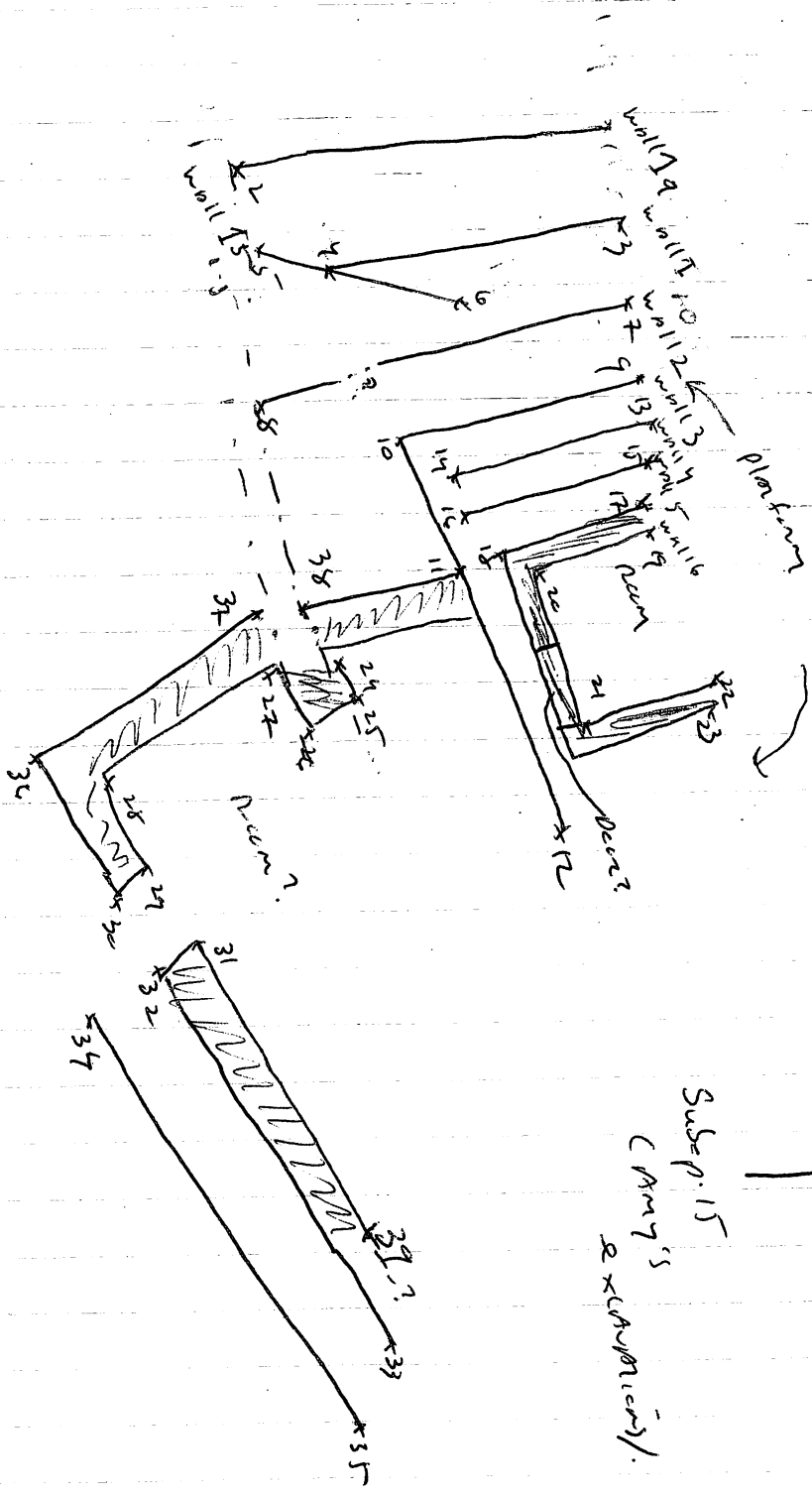
sun was very bright. The

air was very fresh. The

land was very green. The

water was very calm. The

view was very good. The



Subsep. 15
 (Army's
 & x-ray machine).

