

2002

PVC-039-Kuhr-Field Notes-2002

Leisel Kuhr
Kenyon College

Follow this and additional works at: <https://digital.kenyon.edu/honduras>



Part of the Archaeological Anthropology Commons

Recommended Citation

Kuhr, Leisel, "PVC-039-Kuhr-Field Notes-2002" (2002). *Four Valleys Archive*. Paper 29025.
<https://digital.kenyon.edu/honduras/29025>

This Field Notes is brought to you for free and open access by the Anthropology at Digital Kenyon: Research, Scholarship, and Creative Exchange. It has been accepted for inclusion in Four Valleys Archive by an authorized administrator of Digital Kenyon: Research, Scholarship, and Creative Exchange. For more information, please contact noltj@kenyon.edu.

5 Feb, 2002 Liesel Kuhr

P02-39-1

Finished placing stakes at 9 am (began yesterday)
Liesel, Nick, Kassia. Did both 19E and 19F
as one Trench with 6 Excavation Units for each
Sub op. (12 Excavation Units to the trench). Had trouble
placing some stakes because of rocks in superstructure,
marked those points with marker/whitewash. Those points
are: 3m South, East side; 6m South, West side, 7m S,
W side; 8m S, W side; 9m S, E side (points taken
from Northern end of trench). My end is the Northern
half of trench - 19F (Fruit Loops). The trench goes
up a steep slope, perpendicular to the structure.
N-S running trench at ~~20~~ 20°.

Took digital photos of my trench layout (#23, 24 on
digital card). Working on structure 101.

Beginning Excavation. Unit 1, Northernmost unit
in my Sub op. I am working with Tomas + Marcos (?)

19F/001

1m square. 10 cm. from N/E corner of ^{unit} 1
Topsoil, very dark brown, fine but packed. Empty lot.

19F/002 - unit one

10 cm - 20 cm underneath lot 1

Still topsoil, found ceramics and a sm. Lithic.

Large stone uncovered

19F/003 - unit one

20-30 cm under lot 2. removed dirt around rock,
left it in place. Going through more carefully and finding
more, smaller pieces of ceramic + lithics. Obsidian/
peridotite flake. Starting to see bejereque, Censerhande
Green obsidian blade.

Will take it down about 5 cm at NE corner to complete
19F/003

6 Feb 2002 Llew Kuhn

~~PO2-39-2~~

working w/ Tomas and Marco(?) on Unit one.

Begin work @ 7:20 Am, ground damp but not wet.
Going to flush @ 19F/003 + level out the floor on it.

19F/003 (Cont.)

Soil same color but getting rockier, running into limestone chunks. Workers going a couple cm too deep - NE corner at 33, but we've stopped at a floor w/ a change in color - a streaked white, red and yellow through the dark topsoil - thicker

CLAY and more dense. Removing Stone, sub rounded, flat top 30x30 between 28 + 36 cm BGS. Can now see defined texture difference between 28+ and topsoil.

A little deep - 32-34.

19F/004 30 to 40 ^{cm BGS} as measured from NE corner of EU1, N-most.

Bone - mammal(?). @ 31 cm, just below top of Lot. Stopped digging + cleared art w/ trowel. Long bone. Mystery organic(?) Lump (requested by Pat) Saver.

Color change at 50-55 cm BGS - yellower. Cluster of rocks, medium sized (10-15 cm) in dune of South wall from 35 cm BGS to 40 BGS.

19F/005: 40 - 50 cm BGS as measured from NE corner of EU1, N-most unit of trench. Soil lighter in color but still clay. There is more pebble inclusion in the clay here. No sign of color change present in Excavation 19A. This is the last lot of EU Unit 1.

Brn +
escoba

6 Feb 2002 Lesel Kuhl

PO2-39-3a

Beginning EU 2, 2nd unit from N end of trench,
19F/006:

0-10 cm BGS (from NE corner) FLOYD
Topsoil, dk brown. Found ~~structure~~ ~~Flakes~~ a
possible construction unit. Columnar Basalt 35 cm
South of Northern edge of EU, 50 cm protruding
perpendicular from E. wall, 15 cm thick. Flat
top. 6 20-30 cm boulders South of basalt directly
and to SW. Boulders behind Basalt are even ^{parallel} and
in height and relatively flat topped. Basalt is similar
to another Basalt column 30 cm to its North, to
the East of the E.U. 1.

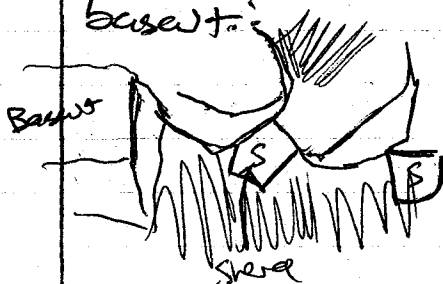
19F/007

10-15 cm BGS (NE corner) 30 cm x 1m Northern most
section of Unit 2 North of FLOYD. No large rocks
exposed in this lot. Pottery exposed, + Flakes.
Topsoil-type.

19F/008

15-25 cm BGS (NE corner) Below 19F/007 directly
30 cm N-S by 1m E-W in EU 2. Still topsoil, down
to the level of thicker clay experienced in EU 1. Continuing
to investigate exterior of possible CU FLOYD. Pottery
Shards (3) around 5 cm. Uncovered 4 cm N of Basalt on
E edge. Bottom of Basalt rests on 20 cm BGS
Lipped Sherd wedged between 2 Stones to W of
basalt.

Bill suggests basalt is tumble off of
a wall made up of stones currently
S. of it. Stones behind make up
a line of 4 breasting EU 2



6 Feb 2002 Lesel Kohn

P02-39-36

19F/009

25-30 BGS, EU Unit 2, 2nd unit South of N. most edge of trench. Directly under 19F/008. 50cm from N wall, completely across EU E/W. No more time today, will finish tomorrow + Green obsidian

7 Feb 2002

19F/009 - cont.

25-30 BGS, EU 2 - 2nd unit South of N. most pt. Continuing this lot from yesterday. Began work at 7:30 with Marcos and Tom's. It's hard to communicate my depth wishes to the workers, so it's getting uneven - about 27 cm BGS in some places. Unclear whether or not FLOYD is turning on W side, and block on East (suggested by Ed) will begin EU Unit 3, South of EU 2 in the trench, to investigate possibility. Soil at end of 009 is still clayey silt (the topsoil is getting more clay cover). Stopped just above thicker bottom layer from CU 1 - heavy clay with about 40% rock inclusions.

~~19F/010~~

19F/010

Beginning EU 3, 2m to 3m South of Northernmost end of trench. 0-10 cm (from NE corner). Beginning to slope upwards towards the Superstructure of 101. Soil on this level is Silty. * Green obsidian blade macehead also found Plumbate Sherd.

terro-
ceramics

7 Feb 2002

USE KHR

P02-39-4

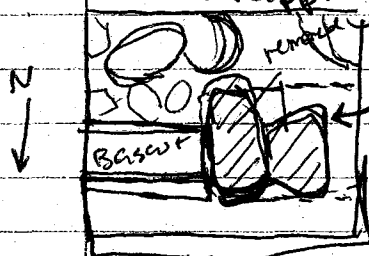
19F/011

10-20 cm BGS (mid E. wall because of large rock at NE corner) EU 3, 3m South of N. most point in trench. Leaving rocks in place, only removing soil in the center of the ~~stone~~ EU where there are none.

Found green obsidian blades and prismatic sherd, as well as stemmed point without its tip. Excavation has revealed a space between the boulder group at the north end of the EU and an uneven line of possible tumble at the South wall, in which there are no rocks at the ~~same~~ same level as the N and S. ends.

Cleaned border between EU 3 and EU 2, removing 5 more cm ~~off~~ along the West wall of EU 2, 30 cm W of EU from West wall and 50 cm from South wall, to reveal stones better.

Remaining 2 stones that look like they could be tumble, 45 cm laterally from N. wall of EU 2, 45 cm laterally from W. wall of EU 2. Stones are tilted E/W and overlapping.

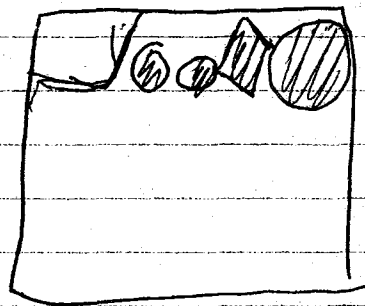


19F/012

50 cm → 75 cm South of N. wall of EU 2, 10-20 cm BGS, 45 cm in Eastward of West wall of EU 2. Obsidian, green blade found, belemnite.

19F/013

Removed 4 stones at the S. end of EU 3 because (per Ed et al.) they appear to be tumble. Hoping this will help clear up the pattern of



7 Feb 2002 Level Km

P02-39-15

19F/03

(continued) the stones in E.V.s 2 and 3, called FLOYD. Excavated beneath low stones in SW corner of EU3 - 60 cm E from SW corner of EU3, and 30 cm N. of S wall of EU3.

8 Feb 2002

Began at 7:25 with Tomas and Marcos. Greg, foggy morning. I am grumpy. Looking at the South wall of EU3, possible well - stacked stones.

19F/04

begin EU4 - 4 m south of northernmost point of trench. 1 m x 1 m, Ø-10 cm^{8/15}. Removing dirt from stones to further investigate archaeology. Heavy root systems in this lot, when removed displaced surface stones (probably tumble anyway). Otherwise, leaving larger stones in place. Soil is dark, silty topsoil.

Plumbate and green obsidian in this lot. Stones that were measured are all tilted except for a 45 cm boulder between EU4 and EU3 which has a level top but is 10 cm higher than level of rocks in EU3. 2 more large boulders are in the southern corners of EU4, but they too appear tilted. Middle of lot floor is empty of rocks, periphery of center has 5 small rocks (12-15 cm) that look disturbed. For now, not seeing evidence of any structure. Can see mature leg section

Emerging sideleg 35 cm. North off of South wall of EU4.

8 Feb 2002 Lese Kehr

P02-39-6

19F/015

(NE corner)

Remaining rocks that are tumble, 10-20 cm Bgs. EU4, 1m x 1m, 4m from N. most end of trench.

Green Obsidian and plumbate sherds uncovered. Soil ~~very~~ very silt. ~~Plumbate~~ EU is going up base of slope at about a 20° angle before point (broken), bayerregue.

Uncovered 1 pot which appears to be a crushed pot 30 cm. W of E. wall of EU, 80 cm N. of S. wall of EU. removed Natate section.

19F/016

Removed stacked tumble (3 rows) above and to the W. of pot, and removed dirt underneath to level of 20 cm Bgs (NE corner of EU4). EU4, 30 cm from E. wall to 70 cm from E. wall - in Obsidian, plumbate recovered. 35 cm North from South wall of EU4. Lot is ~~debris~~ in deposition under tumble.

including pot neck:
of E. wall, 20 cm
N. of S. wall.

30 cm Bgs S. wall.
cleaned carefully around
pot, took picture and
removed.



30 cm west of
~~E. wall, 20 cm~~

will also include in this lot items from entire 1m x 1m EU, taking whole lot to 20 cm Bgs. All is tumble debris. Near S wall, found 2 stone tools.

8 Feb 2002 Lese Kehr

902-39-7

19F/017

EU 4, 4th 1m² EU from North end of the trench. 20-30 cm BGS (NE corner). Northern 1m x 50 cm half of EU. Soil ~~is~~ Clayey silt, dk brown pinkish and green Ostracod. Uncovered large rocks that appear to be 4th ed like tumbler. Pottery sherds ran into a deeper level, suggesting to me that we are not at a floor here.

19F/018

EU 4, 4th EU from N. most point of trench. 20-30 cm BGS (NE corner). Southern 1m x 50 cm half of EU. Soil Clayey silt. Screening for small lithic debris. Found bone or tooth in screening, as well as strange round rock like NUKS a couple days ago. Soil is getting much rockier, still no clear signs of construction chits.

19F/019

EU 5, 5th EU from N. most point of trench.

Uncovering Rocks, 0-?

No more time today, about half of lot left to clear out, pile of soil still in EU 5.

11 Feb 2002

Monday morning, began work at 7:30. It rained heavily over the weekend. There is no standing water in the trench, however some soil was washed from EU 5 into the southern corner of EU 4.

Problem - cannot remember if we had bagged any artifacts for 19F/018 yet. I do not have the bag.

11 Feb 2002

Uexl Kuhn

P02-39-8

or a lot card for 19F/018, but we have only just begun to clear topsoil.

19F/⁰¹⁹~~018~~ (cont.)

EU 5 5 m S. of N. most end of trench. Clearing topsoil from stones. Dark, waxy silt.

There is a large root in the center of the EU.

Biggest piece of plumbea yet, and other smaller pieces. Big piece shows mixing of other strands from previous EUs. Ed says I'm getting more plumbea thanks

ever seen.

Working with Tomas and Marcos. Marcos is much more gentle and careful, Tomas sometimes seems like he's going too fast because he's bored. Right now, however, I'm giving his methods the benefit of the doubt since he has as much experience as I do. Overall I am feeling more relaxed about trusting my workers now.

Found 2 censer prongs

Green Obsidian blade

Inquiry in lot when we clear from the front of the rocks. There is a vertical line of stones present, but they appear disturbed. Removed two large stones that were tilted at the edge of EU 5 + EU 4, as well as a vertically tilted flat stone in the SW corner of EU 5.

The stones along the bottom of this level are mildly consistent and slope upward with the surface. Removed more tilted stones on the West half of EU 5. Line across the South end of EU looks most promising for wall.

Remaining rubble across EU, to 30 cm Bgs (center of EU wall)

11 feb 2002

Liese Kühr

P02-39-~~11~~9

19F/018 ~~018~~ 020

EU 5, 5 m S. of Northernmost end of Trench.

70 cm in from N. wall of EU 5, 1 m E/W across.

30 cm BGS (ceiling of E. wall) or 10 cm BGS (NE corner) to around 20 cm deeper - 50 cm BGS (ceiling E. wall) or 30 cm BGS (NE corner). Looking for a wall.

Could all be tumble behind a high wall further up slope.

Green obsidian and groundstone pebble.

Hit heavier clay with gravelly inclusions, sloping upwards. Uncovered Bone fragments, 2 ends, a rib fragment and what appears to be a ~~scapula~~ Scapula fragment. Size could be human, but by the way the ends of the longbone look it may not be. 40 cm S. and 35 cm SW of NE corner of EU 5.

End of day, cleaned up lot.

* Note - realized after field day that I had messed up lot numbers on page seven. The lot 19F/018 finished on the eighth and part of EU 4 is the correct # 18. The next lot is also marked 19F/018, but was completed on the eleventh in EU 5. This lot will from now on be 19F/019. The lot after that, previously known as # 19 and completed in EU 5 on the 11th, will now be 19F/020. The changes have been made in my notes and will be made on the bag tags tomorrow.

12 Feb 2002

Wesel Kuhr

P02-39-10

Began work at 7:20 am. Ground is damp and it's a cloudy morning. Working with Tomás and Marcos. Looking at S. end of EUS, wall of EUS is looking like it might be a wall as Ed thought yesterday. Going to take or some tumbled looking rocks.

19F/021

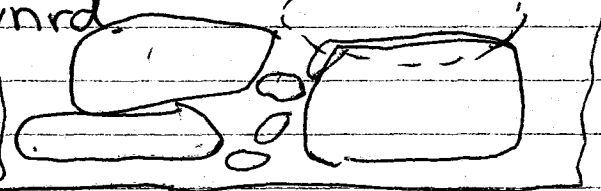
EUS, 5m S. of N. end of trench. ~~35cm~~ 35cm by 1m rectangle along S. wall of EU. From 10 cm BGS to 30 cm BGS (NE corner EUS)
Green Obsidian

More bone, 35 cm N. of S. wall, 5 cm off of E. wall, 30 cm BGS (NE corner). 5 cm long section of long bone. We might have a wall base, along S. wall of EUS. Stopping lot at soil change to more incursions and heavier clay.

19F/022

EUS. Flattening floor of unit in front of possible wall, to 30 cm BGS (NE corner). Soil heavier clay with orange and yellow incursions. Still pottery present, and lithics. Also bone + green pigment stone present. Wall base is 25 cm BGS (NE corner of EUS)

Named ~~the~~ Lynrd.
3 large stones and possibly a fourth removed earlier, which protruded out over large square base.



12 Feb 2002 Liesel Kuhn

P02-39-11

19F/023

EU 6, Southernmost EU in my Subop, N. half of N/S running trench over structure 101. 2-SubSS (NE corner). Clearing silty topsoil from rocks.

This EU is attached on its S. wall to 19F, EU 6.

Removed tumbled rocks in SE quadrant, down to 10cm BSS (NE corner)

Mature Fragments

Note - While going through my notes I realized I had duplicated P02-39-3 on 6 Feb 02. The first page with 10ms 19F/006 through 19F/008 is now 3a; and the second page with 19F/009 - 19F/010 is now 3b.

13 Feb 2002 Liesel Kuhn

Cloudy morning, started work at 7:15 with Tomas and Marcos. Looking at starting a new Sub-op to the West of 19F along side EUs 4-6.

New sub-op will be 19J, composed of 2 ~~1m~~ 1m² units running in a N-S trench on the W. side of 19F, and abutting the North end of 19H.

Goal's of new sub op are to follow wall LYNRD and to see how deep plumbate deposits go to the N. of the wall.

Had trouble putting in stakes because of rocks, left NW corner of 19J EU1 un-staked because we are starting excavation today.

13 Feb 2002

LWSU KUMR

P02-39-12

19J/001

Beginning 19J, EU1. Northernmost EU of 19J trench, already west of 19F/EU5. ϕ -10 cm BGS (NE corner). Dark silty topsoil. 4 large tumble rocks showing through ground surface.

At the South end of the EU on the way across E/W and halfway to the North Wall, we uncovered what appear to be two adjacent rectangles of upright stones. From the E side of 19F/EU5, they appear to be floating on tumble. Could be late construction, possibly pot supports? Ed suggested taking it out west one more unit to see if the pattern continues. Could have missed it in 19F because we came at it horizontally, looking for a wall.

Plumbate and green basidian present in this lot. Censer handle, complete and 11 cm long in NE corner of EU.

Naming this construction unit **110YD**

19J/002

directly

Added on EU1 to the west of EU1, calling it 19J EU 2. 1m², ϕ -10 cm BGS (NE corner). Dark silty topsoil and rocks. Investigating continuance of Boxes to West.

Removed large 40cm rock from surface b/c rocks are tumble.

Same pattern Square of upright stones, though less clear in this unit.

13 Feb 2002 Uwe Kuhn

P02-39-13

19J/003

EU3, S. most ~~unit~~ end of 19J. west of 19F EU6,
and south of 19J EU1, and North of the
N. most edge of 19H. Ø-10 cm Bss (NE corner)
Silty topsoil over large stones.

lots of flakes concentrated in SE corner of EU
Continuation of line from middle of 19F EU6

Going back to EU2 - removed tumbled stones,
working south to look for LYNRD.

19J/004

EU2, 10-20 cm Bss. Silty to podicized stones.
blface, rough. Green obsidian, bagareque.

After removing stones, Lloyd looks like tumbler
rather than internal. No longer a C.U. LLOYD.

19J/005

EU1, removed ex-CU LLOYD and other
tumbler to get at possible Lynrd extension.
10-20 cm Bss (NE corner)

14 Feb 2002

Valentine's Day!

Continuing 19J/005. Rained last night and this morning,
damp ground.

*Add to
card

Green obsidian, whole blface point, seemed j. Bone
Bag 2 of 2

Ended at 20 cm Bss (NE corner)

Possibly the filled top of Lynrd showing along
S. wall of EU1.

14 Feb 2002

Liesel Kuhr

P02-39-14

19J/006

EU 1, 20-40 cm Bgs (NE corner). Silty topsoil through thicker clay under layer, to new or old EUS.

Trying to expose bottom of LYNRD by coring at it horizontally.

Raining now, everything muddy. Hard to write under tarp.

19J/007

Added new EU, #4. South of EU2 and west of EU3, abutting N end of 19K trench. 0-10 cm Bgs (NE corner) exposing stones below topsoil. Only began to clear the surface when time ran out for the weekend. Did not find anything yet, so no lot bags to castive.

19F6	19J5	19J4
19F5	19J1	19J2
19F4		
19F3		
19F2		
19F1		

18 Feb 2002

Monday. Damp and hazy as usual. Working with Tomas + Marcos. Not really liking the fact that it's Monday, but I only have a week ~~more~~ more of this. Rain this weekend did not seem to disturb J-broc that much, just a little soil erosion.

Still no sign of LYNRD from the front, though I can see the wall like very clearly about 35 cm behind LYNRD coming through 19J-4 at a 20° angle, to my c/w trench.

18 Feb 2002

Liesel Kuhn

P02-39-15

Oh - Lab Note: tracked down mislabeled bags
19F/018 - /020 and relabeled them

The line of stones behind LYNRD is almost
unbelievably clear. In the SE corner of the EU,
the top course of the line is missing, and
there is a consistent line beneath it emerging
to the N of the line in this EU. There are
up-ended & flat stones that look as if they
may have fallen forward off of the line behind
them.

Floor of Lot 19J/007 is the large stone
tumble, at 15 cm Bgs NE corner, sloping upwards
to ^{ca} 01 Bgs from the NE corner.

Yep, there's no doubt we have a wall behind
LYNRD, I'm naming it Crosby.

Crosby cuts across 19F/005-EU5, 19J-EU3 and
19J-EU4.

I am hypothesizing that Lynrd, still covered
in EU3, is roughly parallel to Crosby.
My next lot will be going in to EU3 from
its N end, EU1, to find Lynrd.

19J/008

EU3, already S. of EU1. 20 cm South of
North wall, in from the South edge of EU1.
I'm across the whole EU- ~~about~~ 10 cm Bgs to
change in soil type at 50 cm Bgs (NE corner).
Basically, working our way down from the top of
the lot and in from the edge carefully.

Quite a few large pot sherds, many Lips.
LYNRD is pretty clear between 50 and 20 cm Bgs.

18 Feb 02

Liese Kuhn

P02-39.16

19J/008
(Cont'd)

There seems to be a pretty clear course at 20 cm Bgs, atleast on the west half, that lines up with astore in 19F-EU5 that we removed in excavation then, suggesting Lined does exist there, higher up than we originally thought then.

19J/009

EU3, directly below 008. Removing the shelf of heavier clay soil that remained when we stopped 008 at soil change from silty to clay. 50-70 cm Bgs (NE corner), 20 cm N/S by 1 m E/W section of EU, all the way along the EU's N wall.
~~Green obsidian~~

19J/010

EU2, west of EU1. 1 m², 20-40 cm Bgs (NE) Stopping at, Change in soil type, 40 cm at NE, sloping up 5-10 cm going South. Plumb line in upper level. Green Obsidian here, too. Hmm, well the workers didn't quite seem to understand that I needed them to stop at the soil change, so there is a little bit mixed in with this lot. So - instead of stopping at the change we are going all the way down, through the thicker clay, to the level of EU1, 40 cm and level it off.

18 Feb, '02

Liesel Kuhn

P-02-39-17

19J/011

EU 4, west of EU 3 and South of EU 2.
25 cm wide strip along whole N edge of EU
4. 20-65 cm Bqs (NE). Following LYNED into the
next EU.

30 cm in off the west wall of EU 4,
there is a possible corner where LYNED turns
South. This is suggested by the way the tumble
begins to tilt sideways, rather than down slope,
as in front of the wall.
Leaving field early due to rain - left at 1:00.

19 Feb, '02

drizzling again this morning, with a forecast of
more rain. Soil is just damp, no standing water or
erosion. Tomas and Marcos working with me as
usual.

Beginning lot 19J/011 that we were unable to
do yesterday because of the rain.

Right off, near the top of the lot, they found a
complete, 11 cm long grey obsidian blade.
And a 4 cm. complete perlite point. Green
obsidian present, as well as plumbea.

Under LYNED, through 19F-EU5, 19J-EU1 and -EU2,
the wall seems to be resting on an earlier
midden that slopes upward as it goes west.
LYNED compensates for that by going deeper on
the East side (19F-EU5) where the original ground
was lower, while remaining roughly the same height
all the way across.

19 Feb 2002 Liesel Kuhr

P02-39-18

At the NE corner of EU2, there is a protruding column of 3 flat stones (9 cm - 30 cm BGS). It could possibly be a corner of an earlier structure, added on to on the west side.

At the ~~SE~~^{LYNRD} corner of EU3, ~~there is~~^{there is} 30-45 cm BGS. In the center of the North wall of EU3, LYNRD is ~~at~~³⁵ cm BGS at the base. ~~40~~ cm East of the NW corner of EU4

LYNRD seems to stop, it is no longer visible from the cross section in EU4, and the sideways tumble begins.

To further investigate the corner of LYNRD and the line of CROSBY behind it, I am adding two more EUs to the west of EU2 and EU4 respectively.

19J/012

EU5, directly west of EU2, 1m². ϕ -20 cm BGS (NE corner). Stopping at soil change - now apparent that the lower level is midden, and so will take care to keep lots separate.

10 cm deep (approx) sand where tooth of large herbivore, with some enamel intact. Green obsidian, tip of a large bone and plumbe here, too.

We over dug in the SW corner, going about 20 cm too far west to a 10 cm BGS depth because of an unclear stake. Running into some measurement problems where my sub-ops run into Kassra's, such as the SW corner of EU6. Have had to make my own points from my EUs, rather than using hers.

19 Feb 2002

Liesel Kuhr

P02-39-19

19J/012

(continued) This lot stopped at 15 rather than 20 cm BGS (NE corner) because of soil change from Silty Clay to midden with heavy clay.

19J/013

EU5; directly west of EU2. This lot is directly under 1012. 15 - 25 cm BGS (NE). Not the entire 1m², to try to catch the change to midden, we only went down on the N. half (50 cm by 1 m) of the EU. This lot directly above midden.

19J/014

EU5. Lot directly under 1013, 50 cm N/S by 1 m E/W along N wall of EU. This area consists of midden with high clay content, from 25 - 30 cm BGS. Also nearby in this lot 15 - 30 cm BGS in a 30 cm by 1 m area directly south of the 1 m x 50 cm area. This is where the midden/clay starts to run uphill and so occurs higher than the midden in the northern half of the EU.

The last 20 cm wide strip of the EU ~~excavated~~ has not been removed, it possibly contains a CU and so I think we will go in more carefully from the side after we clear the top of EU6, to the south of this EU.

19J/015

EU6, directly to the south of EU5 and to the west of EU4. 1 m², 0 - 10 cm BGS clearing silty topsoil off of rocks below.

Make lot
level →

19 Feb 02

Liesel Kuhn

P02-39-26

19J/015

(cont'd)

Green obsidian found

20 Feb 02

Started work at 7:15. As always, Marcos and Tomas are working with me. Kind of cold this morning and a little damp.

Today I plan on Clarifying LYNRD and CROSBY, esp. in the West half of 19J. Right now, both lines are clear until halfway through 19J-EU4, where there is a possible corner and lots of tumble.

Went through 19J 3, 4 and 6 and picked obvious tumble to Clarify lines.

Decided to go in and uncover CROSBY from the front, over LYNRD's lowest point, 19F-EU5.

19F/024

Back to 19F sub-op, EU6. Took out the fill above and behind LYNRD and in front of CROSBY. 1 m E/W, 35 cm N/S section of the EU, ~~and~~ along the North wall. 10 cm BGS to 40 cm BGS.

The stones below the upper course are not a clear wall, but rather look like the clear line on top was set on fill or tumble. The soil in fill is the same dark silty soil.

19J/016

EU 3, 10-20 cm BGS (NE corner). Cleaning a little deeper around stones, removing some tumble. Moving along Crosby and above LYNRD.

20 Feb 82

Leslie Kuhn

P82-39-21

19J/Ø16

(cont'd)

In this area Crosby appears to be a 2nd level above Lynrd, which here as a 1st level of stone behind it. Moving on to EU 4, continuing to clean down further and remove tumble.

19J/Ø17

EU 4, 1m² Directly under 19J/Ø17. 1Ø - 2Ø cm BSS. Silty ~~light~~ soil. Cleaning around LYNRD, and around Crosby, removing tumble. Ceramics and flint only.

19J/Ø18

EU 6, 1Ø - 3Ø cm BSS. 1m ~~away~~ e/w along N. wall, 4Ø cm into the EU N/S.

Faunal Bone, groundstone rectangle, 17cm. I am pretty sure LYNRD stops at the NE corner of EU 6, but Crosby appears to continue out from under tumble in the SW corner of 6.

Green Obsidian, bajareque, ceramics, flint.

Moving to the southern half of the EU.

19J/Ø19

EU 6, 1m by 6Ø cm ^{Southern} ~~half~~ half of EU. 1Ø - 3Ø cm BSS.

Green Obsidian, bajareque.

Now very clear that LYNRD corners on the edge between EU 4 and EU 6. It is unclear how far back the niche or corner goes. I have a few lines that could go either way, or could be older structures. So, I'm going to leave it for tomorrow and possibly open up an EU to the west.

20 Feb 02

Liese

R02-34-22

~~19J/020~~
19J/025

* go back +
look up depth

EV6, 5 cm more of clearing dirt behind CROSBY.
Only ceramics.

21 Feb 02

Started work at 7:15 am. Muggy morning.
I am working with Marcos ~~XXXX~~ and ELY - Tomas' replacement.

Removing tumble from the south end of 3 and 4, helping Kassia remove tumble from her part of the structure as well.

Added an EV to the west of 6 to see if the break in LYNED is a niche or the end of the structure. This EV's number is 7.

19J/020

EV7, directly W. of EV6. ϕ - 10 cm BGS. Removing silty topsoil from stores. ~~not yet excavated~~ ~~Green obsidian~~. NO architecture present at this level, it appears a large, flat rectangular stone in the SW corner of 6 may be a corner stone, but it would require further investigation of Kassia's side of the division.

19J/021

EV6, 30 cm - 40 cm BGS (NE corner). 1 m E/W by 65 cm N/S section of the unit, in front (to the North) of a line of stores at 30 cm BGS, N of and below what appears to be a continuation of CROSBY.

5 cm down, we ran into a level of big, flat stores

21 Feb 02

Leeuwin

P02-39-23

19J/021

(cont'd) along the N. edge of EU6. This lot is now the debris from directly above these stones to ~~EU6~~ 35 cm BGS, and directly in front (N of) the stones from 30 cm BGS to 60 cm BGS. This is probably not so useful in retrospect, because the front of the steps includes Somerdaen as well.

Naming this EU SKYNRD.

19J/022

A 10 cm wide strip of soil on top of SKYNRD on the west edge of EU6. This strip had mistakenly been cleared to 10 cm BGS with the rest of EU7, and now is at 20 cm BGS (NE corner of EU7), the level of SKYNRD.

However, this lot includes only ceramic + IRLU debris from the 10 cm directly above SKYNRD, and not midden from below.

19J/023

EU7 10-20 cm BGS, 1m².

Green obsidian, bajareque, faunal bone, ceramic, IRLU; pumice, groundstone paste.

SKYNRD appears to continue for at least 2 more blocks, about 30 cm, and is surrounded by fill. This is still very confusing since the step above appears to stop at the E. edge of 7.

It is possible that SKYNRD ends at the same point as the step above, CROSSBY. Both lines have large, rectangular stones that are on the edge between 6 and 7.

21 Feb '02

Leslie Kuhn

P02-39-24

Below SKYNRD, in the NW corner of 6, there is a cut block that appears to be a step lower than SKYNRD.

As we end for the day, Kasso's crew uncovered a large (50 cm by 25 cm) block above CRABBY. I may want to pull some of the stones suggested by Ted earlier in 6. Also, need to back up off of 7 about 50 cm tomorrow.

22 Feb '02

It's Friday, and we ain't got Sh** to do. Okay, that's a lie.

Opened up a 1m by 50 cm (E/W) EU, #8, to the North of 7 and West of 5, to further investigate SKYNRD. We don't need a whole 1m EU to see SKYNRD's edge, plus we are dangerously close to the back-dirt and rock pines.

Also going to work on keeping my lots small and accurate.

PJ/024

EU8, 1m by 50cm half EU, #8 E/W along the N Side of EU7, and sharing the South half of EU5's West wall. 10-18 cm BGS (NE corner).
prumbate, ~~Shake head center~~

Need to go back and clean off the front of LYNRD, P+E noticed the base went further down and into the clay wall. Also need to clean out some shell stones behind SKYNRD.

19J/025

EU8, 1m by 50 cm North of EU7. 10-20 cm BGS. Green obsidian, Shake head center handle. NO architecture. Directly over 19J/024.

22 Feb '08

Liesel Kuhn

902-34-25

19J/026

EU8, 1m by 50 cm half-EW, N. of EU7, 20-30 cm BGS (nc)
Directly under 19J/025.

Doing well so far at keeping things heat, my rats aren't
nearly as weird as they were yesterday ☺

Green obsidian present, as well as 2 pieces of Lanner
bone - probably Deer.

19J/027

Clearing in front of SKYNRD, N. end of EU7,
25 cm N/S by 1m E/W. 20-40 cm BGS (nc)

Large chunks of basaltic.

SKYNRD Extends at least 50 cm west into EU7,
at which the line of first stone disappears.

I think I need to clean up the southern end of
7 and remove more tumble.

19J/028

EU7, 30cm strip along S. edge. 10-40 BGS (nc)
cleaning up soil and tumble.

Not so helpful - still looks like tumble, but there is a
possibility that the large stones that are tilted forward
and down originally rested on a lean whose line is
visible in front of and below them. I'm going to dig down
in front of ~~some~~ ^{DYLAN} ~~to see what's~~ to see what's down there.

19J/029

EU6, a 30 cm by 50 cm E/W section between SKYNRD
and DYLAN (to the S) and bordered on the E by
LYNRD. 35 cm BGS to ~~40 cm~~ 45 cm BGS.

* Uncovered larger stones that still appear to be tumble or
Naming this ~~new~~ line DYLAN End.

22 Feb 02

Leszek

?02-39-26A

19J/029 (cont'd)

moving in this lot the next 50 cm to the west, 30 cm South off the back of SKNRD.

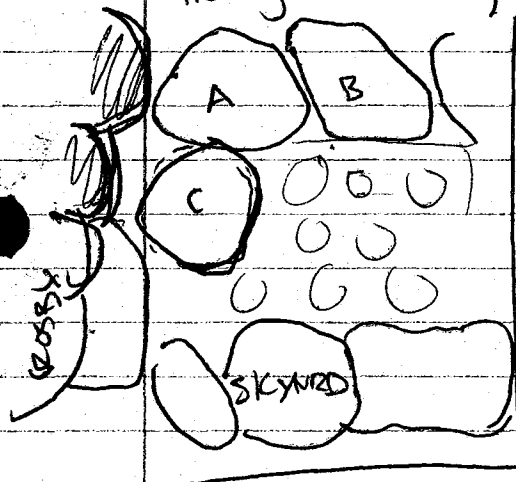
Big ops - Now DYLAN doesn't look like much. Named it too soon. Taking out 3 of the stones.

Now cleaning all the way back to Crosby to 40 cm Bss, 20 cm from S. wall.

There are two Stones, in line with Crosby, but sitting down hill, in the SE corner of EU 6. (Aca's)

They are in front of a large, rectangular flat stone that is clearly in its original position, suggesting further that A and B are at least partially timber. So I am finally removing them.

Now the lot continues back a full meter, to the edge of the large rectangular rock in Kassra's unit.



Ed says this is a niche, probably with a clay floor ^{over fill}. The lot is now 1 meter by 1 meter, EU 6. From 30 cm Bss to 40 cm Bss.

'C' in the drawing is large timber deeply embedded, we are leaving it in place.

19J/030

EU 1 and 2, cleaning madden off of ^{bottom} ~~bottom~~ of LYNRD.

Bayareque, ceramic, rebar

25 Feb 02

Liesel Kuhn

PD2-39-268

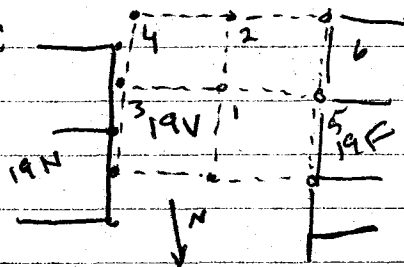
19V Page

Began work at 7:20. It's really unseasonably cold recently. We are supposed to have a 2nd set of workers starting today, but we don't have enough tools yet, so they are air clearing. I hate Mondays as a rule, but today is exciting because it's the first day of "real" fieldwork after "training" (w/o any real, tangible changes).

Today I am moving on to the E side of my original subop - 19F. Following LYND and CROSBY E ward to see if it intersects Maras' trench.

Laid out new subop, 19V, to the E of 19F. There are 4 EUs in 19V, laid out in a 2x2 square abutting 19F 5+6 on V's West and 19N on V's E. The NE corner of 19V 3, the NE most EU, intersects 19N's western edge 50 cm south of that EU's NW corner. Here's a picture:

19V is 20° N/S and 110° E/W (19N is 2° N/S, so they don't quite match up)



19V/001

EU 1, NW EU in 19V, dir E of 19F EU 5. $0-10$ cm BGS (NE corner). Soil type is clayey silt. Found a small faunal bone 4 cm long in poor condition, missing an end and mid section. Also found a small chert biface tip, possibly missing the ^{base} ~~tip~~.

OH Baby, found a whole stemmed biface, obsidian 5.8 cm Base to tip, 2.5 cm wide. Putting it in a separate bag in lithics bag. Bill should see this.

Lot also includes green obs, lithics and pot sherds. Plus 2 more deer bones, part of a long bone (medial) and metatarsal.

25 Feb 02

Lieselkuhr

P02-39-27

19X Page

It turns out I did get a second crew, they are opening up a new subop W of 19J - called 19X. 19X is a trench running N/S, beginning directly to the W of 19J EU7.

The workers had to begin by clearing a back dirt pile and rocks from the W edge of the trenches.

We laid out a 1m² EU, 19X EU1, abutting the W edge of 19F EU7. The NW corner is a Marker "X" on a stone.

19X/001

EU1, W of 19J EU7. Ø-1Øcm Bgs (NE). Soil is Clayey silt.

+ Finding sm. flakes of chert and pot shards. NO architecture, lots of larger medium rock tumble, removed in next lot.

19X/002

EU1, W of 19J EU7. Ø-2Øcm Bgs (NE).

Still no Architecture.

Mano end, groundstone. 6cm across and 5cm long, marked and bagged with lithics.

Censer handle end, orange paste, hole at the end, 6cm long.

Bejareque, ceramics, chert

Green Obsidian distal point faunal.

Faunal bone, one small piece of unknown type, poor conservation.

Hitting a stone floor, possible extension of SKYMRD at the bottom of this lot.

Clear line, extension of SKYMRD but with smaller rocks, 30cm S. off of N. wall.

25 Feb 02

Lind Kahr

P02-39-29

19V page

19V/002

EUI, ~~19F~~ ^E of 19F EUS. 10-20 cm BGS.

Finally more main sized tumbre

Found an interesting ceramic piece, thin flat orange paste 6m long with a circular attachment on one side, its hollow and looks like a broken handle or something, its going in the bag with Sheds.

More human bone from the same place as before, SW corner of EU. Medial section of longbone, very small and not human.

Uncovered a complete Mano, 60 cm S. of NW corner and 30 cm in from W wall. For now its pinned under tumbre, well wait to clear under it and get it out the way.

Found ^{flint} chert stemmed bifacial, 6 cm long and 3 cm wide. bagged separately and put w/ 1140cs.

After more cleaning, removed whole mano. 17 cm long, lopsided but around 6 cm across on the wider side and 5 across on the narrower one. Marked w/ lot # and Bagged with lot.

Green Obsidian blade.

Can see lumps of basalt everywhere all over S wall of EU. LYNRD is visible in the southern edge of the lot from the workers pulled a flat stone earlier that may have been a core of LYNRD poked forward, from the SW corner of EU1.

At the moment and for future reference, 20 cm BGS (NE) for EU1 is 50 cm BGS (NE) for EU2.

19V/003

EUI, E of 19F EUS. 20-30 cm BGS.

25 Feb 08

Liesel Kuhr

P02-39-2a

19V Page

19V/003

(cont'd)

Round bone, epiphyseal end of a long bone, probably deer again but definitely not human.

Long piece of Columnar Basalt along S. wall, appears disturbed but could possibly be part of LYNRD - 2 will have to open up EU2, to the S, to answer that question.

Complete Mano, 30 cm BGS in the NW corner of EU. in tumble. Embedded in the floor of this EU. Marked and will take it into lab separately from lot with the other mano pieces from today.

19V/004

EU1, dir. E of 19F EU5. 30-40 cm BGS.

Clay soil. Uncovered mano end 30 cm E of W. wall and 30 cm S of N. wall in the NW corner of EU1. Marked and will be taken back separately.

Ceramic + lithic debris.

25 Feb 02

Low KHR

902-39-30

~~19X~~ page

~~19X/003~~

EU 1, was 195 EU 7. 1m C/W by 30cm MS Strip Along entire N. wall, N of SKYRD. 20 cm to 30cm BGS (NE). Soil is Silty clay.

Burred faunal bone, small fragments. I can't believe they even pick out stuff that small. Paper bagged it.
Cranes + ribs

26 Feb 02

Started work at 7:20 in the morning. Mana sprained her ankle walking to the site this morning, so she's not working next door.

I have 2 crews again, Tomas' son and Marcos along with Kristin's crew. We have a shortage of tools again so they have to share a brush, shovel and trowels.

Tomas' son showed up with a second small pick, after I took one back yesterday. How many do they have?

~~19X/003~~

~~19J/003~~ 030

EU 7, dir. W of EU 6.
Cleaning down to fill, behind SKYRD
Front of SKYRD is 25cm from N wall, SKYRD's large rocks in EU 6 and part of 7 are 25cm wide (N/S) and the 50cm behind (S of) SKYRD are fill/floor.
It is the smest 50cm of the EU that they are cleaning down to 40cm BGS from 30cm BGS. To be level with EU 6 and ~~all~~ 19X EU 1.

26 Feb 82

Liesel Kuhn

P02-39-31

19V page

19V/005

EU2, SW most EU of subop. dir E of 19F EU6.
Ø-1Ø cm BGS.

Can see Ernie clearly in the S. most 15 cm S of the EU.

Took off large tumble, one of which looks like parts of its matrix had eroded, leaving a natural looking and bizarre bubbly rock. 2 larger ones appeared to be tumbled from Crosby, which is present at least coming into the W. edge of EU2.

Bone, femur of unknown type or animal. bagged in paper.

Green Obsidian, prismatic

Ely, Tomas's son, went through a possible cornering of Crosby on the W side of the EU, taking out soil from behind Crosby in 19F EU6 in a 25 cm² area, going through a 25 cm wide space between the possible corner rock and wall ERNIE.

19V/006

EU2, SW most EU of subopv. dir E of 19F EU6. 1Ø-2Ø cm BGS

Green obsidian prismatic. N most 20 cm of EU, to begin w/ in front of possible Crosby extension.

Ed pointed out that behind this rather vague wall is later fill.

Canavero, where in possible Crosby extension, 15 cm W of E wall and 25 cm S of N wall. 10 cm BGS. Bagged w/ ceramics.

26 Feb 82

Wesley K. H.

P02-39-32

19X Page

19J/030 (cont'd)

took at some tumble from the S. end of ~~the~~^{EU} the edge between my EU and Kassia's has definite tumble, however I cannot remove my tumble without taking out hers first, so for the moment we'll hold off.

Added a new EU to the S. of EU1 in 19X, 19X EU2. This EU goes farther S. than any of those in my trenches, it is wrapping around Kassia's EUS.

19X/004

EU2, dir S. of EU1. Ø-10 cm BSS (NS) Jazzy silt. Large 4 cm wide roots outstubby what appears to be a continuation of ~~the~~ ERNIE in the S. ~~most~~ 25 cm of EU2.

At 18 cm BSS found a "Frijole", probably cement, but bagged with lithics.

Very large flat sub-rectangular boulder 45 cm across by 20 cm high. Set in tumble so it looks flat and possibly irregular but placement doesn't line up w/ any known Cus. It is in the NE corner of EU at 5 cm BSS on the bottom and protruding above soil.

Found Manteleg, 25 cm E of W. well and 35 cm N of S. well, 10 cm BSS ~~marked w/ white paint pen~~ Lots getting to 20 cm BSS, fine.

Green obsidian. Another Manteleg the rocks brought over to me, could also be pestle 4 cm tall, 5 cm wide at base, broken.

Have of pestle, groundstone, bagged w/ lithics.

26 Feb 02

Liesel Kuhn

P02-32-33

19X page

19X/024

taking out more timber, slowly,
Large rock, though in line

19Q/206 * in Kassra's Shop @ div. S6 & 19J to 7
30. N most cm, 10-40 cm Bgs.

One Bag of 2 sent in, will continue tomorrow.
Lot #? Will have to check.

27 Feb 02 Working with Luis & named

Started work at 9:45 am, spent the morning at
Las Carras with group. Sunny today, but very very muggy
with threatening clouds. Rain? I don't know.

Felt sick late yesterday, feel a little sketchy
this morning from all the hiking and the heat of
being in the back of the truck with 11 people.

Continuing 19 Q:

~~19X/024~~

19Q/206 Lot # is Still unknown

Hypothesis (Courtesy of P+T):

Original CU corners, LYNRD EU 4, 15 cm E of W wall.
The second phase consists of SKYNRD, added to
the W of LYNRD, a low step^{stone} exterior to the
W edge of EU 7, where a large rectangular stone
cuts back, Sward, and continues in the form of a wall
along the W edge of 19Q EU 6.

A 3rd phase was tacked on to the W of that,
including more SKYNRD, CROSBY and possibly ERNIE.

26 Feb 02

Lesekur

P02-39-34

19V page

19V/006 (cont'd)

Cleared down to 20 cm BSS (NE) on top of what may still be Crosby; however since it is not emerging except for one stone, continued to clear entire EU to 20 BSS.

Context is possible late fill.

Found Bone, plumbone.

19V/007

EU2, dir E of 19F 3 EU6, S of EU1.
20 N most cm, 20 cm - 40 cm BSS. N. of Crosby.
Very obvious small rock tunnel here, though ~~some~~ a possible cause of Crosby, or a Crosby extension, or present 20 cm BSS on the E half of the trench.

27 Feb 02

ELY and Elias working. Both Marcos and Tomas are out side today.

19V/008

EU2, dir E of 19F EU6, S. of EU1.
20 N most cm, 40-50 cm BSS. N of Crosby,
dir. near 007.

Front of Crosby appears present but disturbed, either badly tumbled or tree roots.

The long precast basalt, 60 cm ELW by 30 cm NS, is part of LYNRD but pushed N off of line a little. A 40 cm long flat stone rests on top of the basalt and is embedded in the E wall of EU1.

Cleared down behind Basalt to 50 BSS, where there are large rocks, a possible base for the basalt.

27 Feb 02

Lesekahn

P02-39-35

19X page

19X/005

EU2 dir S. of EU1 and W of 19X EU6.
20-30 cm Bss.

Cleaning + tumbler from corner, to see look for basal wall of ERNK. We want to answer the question of whether or not ERNK is older than CROSBY, LYNRD and SKYNRD.

Found small amts. of faunal bone directly below ERNK at 25 cm Bss, 10 cm E of W. wall.

Large basalt column running diagonally from under the large corner rock to the SW corner of EU2

Found more small bone S. of the basalt, at the base of ERNK.

AAA! Rainy mess!!

Gonna have to move out W one unit to investigate both SKYNRD and remove basalt.

The new Subop., 19AB, is dir W of 19X EU1 and EU2, running N/S and so far consists of 2 EUS, 4 LR N. most of which is dir W of 19X EU2.

19AB/001

EU1, dir W of 19X EU2. 0-10 cm Bss.

It's raining off and on (currently on)

Stopping at 2:00 b/c of Rain.
making bags 1 of 2.

27 Feb 02

Liese/Kuhr

P02-39-36

19V Page

19V/009

EU3, dir E of EU2 and ^{W of} ~~EU2~~ 19N. ~~EU2~~
Ø-1Ø cm BGS (NE)

Removed 4 large tumble rocks from surface.
Green Obsidian.

* 19V/005 - Adzed slag rock, "bubbly" one mentioned in notes, to lot, will take back to rock at + clean.

Closed lot, bag 1 of 2, will continue mañana.

28 Feb 02

Rained last night, very damp here today, a few inches of standing water in 19F EU2, everything else is just very muddy. Even my sitting rock is wet. I'm feeling foggy today as well.

My workers are Luis and Manuel, and Marcos and ELY. Both pairs are continuing with their lots from yesterday.

Pala =
shovel

19V/009 (cont'd)

Bag 2 of 2
ceramics, lithics

LYNRD continues through

19V/010

EU3, dir E of EU2 and W of 19N. 1Ø-2Ø cm BGS (NE).
Nmost 7Ø cm of EU, N of LYNRD.

Soil is silty clay with a lighter color than previous levels
ceramic, lithics.

19V/011

EU3, dir E of EU2 and W of 19N. 2Ø-3Ø cm BGS (NE)
Nmost 7Ø cm, dir under /Ø1Ø, N of LYNRD.

28 Feb '82

Liesel Kuhn

P02-39-37

19AB

19AB/001
(cont'd)

Clearing the southern part of the EU (up hill) down to 10 cm BGS (NE).

Bag 2 of 2.

Green obs, lithics, ceramics: Pottery (shore), base. removed 5 flat rocks, tumble, variously throughout EU.

→ Decided to continue lot to ~~15~~ 20 cm BGS to level of LYNED in 19X EU1. 20

Faunal bone fragment.

Makate, embedded in S. wall in SE corner. Possible part of EU.

Small copper lump, bagged with lithics. Excavations revealed 2 square blocks, in line with SKYNERD and at 15 cm BGS (NE). The E most block abuts the E wall of EU 3, is 30 cm², 40 cm S. of N. wall. The second block is 20 cm E of W. wall, 40 cm S. of N. wall, 30 by 25 cm. Every space between the two is a narrow limestone rock.

19AB/002

EU2, at S. of EU1, W of 19X EU2. 0-10 cm BGS. Removed tumble showing on surface. One large stone, sub-rectangular and flat, we removed from above ERNE, though it was probably part of the wall it had slid down hill (N) and blocked excavation. There is a flat rock below it.

28 Feb 08

Liese Kuhn

P02-39-38

19V Page

19V/011

cont'd.

removed long narrow flat stone from W. edge.
Stone was resting on B&S and tumble.

I'm standing in a muddy hole at 9:30 in the morning. Don't expect much.

12 cm long biface, broken at base. Pink chert, bagged w/ 11#s.

Large boulder, part of LYNRD, 30 cm tall, 35 cm wide and 30 cm deep. Resting 30 cm B&S (NE corner). LYNRD continues to the E of this large rock, 30 cm B&S to 0 cm B&S (NE corner).

Stopped at standard level in Chynaden, below bottom of LYNRD.

19V/012

EU4, SE most EU of 19V. Dir E of EU2 and S. of EU3. 0-10 cm B&S. Removed lots of flat tumble stones, large + sh.

Green obs, faunal bone frag. Biface midsection, flint/chert, missing tip + base. 7 cm long.

Pat pointed out a possible change in construction types in LYNRD, ~~at the~~ in 19F EU5, about 20 cm E of the W. wall, the small rocks stop near the top course and about a larger, deeper bunker. The line of large flint rocks continues to the East, through 19V EUS 1 and 2 ending with the large square rock in EU2. The wall continues E after that in the same manner as originally described, smaller stones stacked. The change in length between the basalt column and the large square stone dr. to its east could indicate a step here.

28 Feb 82

LHAKUHR

P02-39-34

19V page

19V/013

EU4, dir S of EU3 and E of EU2. Under 1012.
~~10-20 cm BSS~~. 10-30 cm BSS, N. most 10 cm, above
LYNRD.

Really, frustratingly unclear what's going on here. It all
looks like tumble or fill, except there's a wall in front of it.
don't really see Crosby where it should be after the W
edge of 19V-EU2.

1 Mar
~~29 Feb 82~~

29 Feb, Friday. Started work at 7:20. I have
Tomas back, working with Marcos on the E side. Luis and
Mamed are working on the west side.

Mauricio y Justino, Jon's crew, are working with me
because she is sick.

To the E of 19V, there is Mara's trench, 19N.
I am following LYNRD into 19N with permission of Mara.

19N/014 ???

10-20 cm BSS, EU —. Top 10 cm are missing from Mara's
excavation.

Pulled 7 hundred rocks from the top of the hill,
leaving 3 on the E edge that appear to be part of
lines.

Previous excavation left mound at the angle of the hill,
so 10-20 includes uphill portions that were previously
only 10 cm BSS on the S. (uphill) edge, as well as the NE
corner.

Found Green Obsidian and a piece of figurine, possibly
abraded head 3 cm long. Also a 10 cm long pointed
prong/foot, both bagged w/ ceramics.

21 Aug '02
1 mar

Liese kuhre

P02 - 39-40

19AB/002

(cont'd)

Came back today, Friday and I was cleaning up
lot - ~~red/brown~~ Sand green obs

Going to 20 cm BGS rather than 10.

Soil is still Silt/Clay, but with more Clay cover and a
higher color.

Faunal bone fragment found in ~~base~~ E. edge of
EU2. Bagged.

19AB/003

EU2, at S of EU1 and W of 19X EU2.
20-30 cm BGS.

Gr. obs, bajareque, ceramic, lithic.

A 6 cm long piece of chert that has the rough shape
of a stemmed biface, but is completely unworked on one
side, the other side showing signs of partial working.

Bagged w/ lithics.

~~Remaining basalt, 57 cm long, 38 wide and~~
~~11 thick.~~ 19X EU2

Remaining Basalt, 57 cm long, 38 wide and
11 thick.

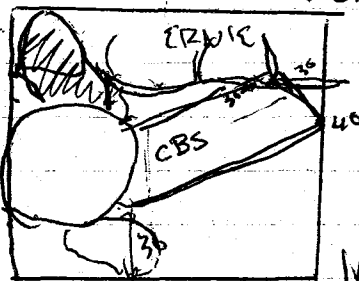
including what was under it in 19AB/003
if they are on the same level.

Faunal bone (ultra distal end?) 100g
the deer. in 19AB EU2, ~~the~~ wall, 30

cm BGS,

Now appears ERNK goes down at least to 30 BGS.
Faunal bone fragments, 30 cm BGS. Same level as previous finds
40 E & W. wall, 25 N of S wall, 19X EU2.

19X
EU2
→



1 Mar
19 Feb 02

Week 1
HAG page

P02-39-41

Starting HAG, to the E of 19F EU2.

19AG 1001

EU1, dir E of 19F EU2. \emptyset -1 \emptyset cm Bxs.

Soil is clayey silt, topsoil.

On the W. edge, a piece of basket from FLOYD protrudes 22 cm into EU, 3 \emptyset cm S. of N. wall.

The N. edge of the EU is another basket column, visible from the surface 95 cm long by 2 \emptyset cm wide, from \emptyset to 15 cm S. out from N wall into the EU.

Only 3 flakes and no sherds.

19AG 1002

EU1, dir E of 19F EU2. 1 \emptyset -2 \emptyset cm Bxs.

Same clayey silt topsoil.

Green Bx, ceramic + lithics

19AG 1003

EU1, dir E of 19F EU2. 2 \emptyset -3 \emptyset cm Bxs.

Still no tumble at the level present in 19F EU2.

Soil still clayey silt, dark in color at top of level.

Partial Figure face, polychrome, frog eye and partial bagged with ceramics

Soil gets lighter and more sh. stone inclusions at bottom of lot.

Found 5 cm stemmed obsidian point, complete. Very nice, the stem is wide and the point is still there.

~~19 Feb 02~~
1 May.

Lesekuhn

P02-39-42

19N
(cont'd)

in the SW corner of the EU, stacked stones that are possibly a N/shell (FRED?). Workers removed stones from N. part of wall. Matches up w 2 parallel stones in 19V EU4.

Adding 5 cm (now to 25 cm BGS) to hit LYNRD.

19N (B)

EU — 25-35 cm BGS. Exploring possible LYNRD corner w/ EURE. Fill stops in this EU and Rocks at the E edge of 19V EU3 make clean edge of corner.

Soil change to Silty clay with gravel inclusions. FRED / LYNRD corner corresponds to this level, falling 2 wards.

Oh, okay — here's a possibility:
LYNRD is tucked onto the front of CROSSBY, which corners with FRED further south, and is lighter than LYNRD, which clearly maintains the same height as in other places: ~~about~~ 25 cm BGS.

A Semi-circular terrace in 19N's Northern 2 EUS continues 38 cm into this EU, then stops abruptly.

Because of the 18° difference in slope orientation between 19N and 19V, the next EU — 19V EU5 — will be oriented with 19V and 192. Because of this, the EU will be Trapezoidal, 1 m on the S. edge, 80 cm on the E. edge, 60 cm on the W. edge and 105 cm on the N. edge.

1 mar '02

Liese/Kuhr

P02-32-43

19V / ~~14~~ 14

19V EU5, \emptyset -1 \emptyset cm BGS. N of 19Z EU6, E of 19V EU4 and S of 19N.

Suggestion of more ERNK coming out to the E, along the S edge of HUSEU.

Removed a long rectangular stone that ^{possibly} slipped from on top of Ernie, revealing ~~more~~ stones in line with the wall underneath.

Green obs, 11 lbs, cr.

19V / 15

EU5, 1 \emptyset -2 \emptyset cm BGS. N of ERNK and E of FRED. Workers went to ~~30~~ BGS, so we are evening out at ~~30~~ BGS.

Tumble along W wall looks like it fell from FRED down (N).

Took out tumble along S. wall of EU, it is not an extension of ERNK, Ernie ends in the W edge of the EU.

Cleaning up + ending work at 2:30.

1 mar 82

Liese/Kahr

44
P02-3947

19AG/004

Added new EU, #2, dir S. of EU1 and E of 19F EU3. ϕ -2 ϕ on BGS. Still not a lot of tumble, even.

At lunch, ed + Pat proposed it might be a square box CU, with the basalt on the N. edge of EU1 slipped out or broken off of the peak in 19F EU2, protruding into 19AG. The tumble distribution (or fill) is a little uneven, though.

19AJ - New subob W of 19F, EU1 is W of 19F EU2. looking for CU associated w/ basalt.

19AJ/001

EU1, dir W of 19F EU2. ϕ -2 ϕ on BGS. Dark silty topsoil. Nothing, big fat lode of rocks, why? dark brown. Gmm.

Ending it here, Going to Roatan!!

1 mar '02

Liesel Kuhr

P02-39-45

19AB/003

cont'd.

Along the S. wall of the EU (19AB EU2), there
is a line of stones protruding from under ERNR of
10 Bbs (NE), at an angle to ERNR but still running E/W.

* had one green obs. shell space, but bag been away
and blade was Bbs.

~~19AB/004~~

4/6" Began New sub-op to the W of 19AB, calling
it 19AK. EU2 is dir W of 19AB EU2.

19AK/001

EU2, dir W of 19AB EU2. 0-10 cm Bbs.
No archaeology, clayey silt topsoil.
Cranes, lithics

11 Mar 02

Liesel Kuhr

P02-39-46

19AK (West)

11 Mar

Mon. morning, returning from Spring break. Starting work at 7:25 am. Misty this morning, and it seems to have rained a little over the past week, and there are some leaves in the trenches, but otherwise things are intact. Even the precarious rocks I was afraid for are still up.

Going to continue the EU in the west, 19AK EU1, following SKYNRD, with Luis and Manuel. Both say they have coughs but seem cheery as usual.

19AK/002

EU1, Dir W of 19AB EU1, 1 m², 10-20 cm BSS.
Dark, clayey silt soil. 10-20 cm Rocks mixed in, probably tumble.

Gr. Obs, Chert, Obs, ceramics

* Added 5 cm (to 25) to make sure there was no SKYNRD below.

Found 5 cm chert stemmed point. 20-25 cm BSS.

Bagged separately and included w/ lithics.

6 cm frag. of faunal bone, paper bagged

15 cm long Mano, I think its complete. Numbered.

19AK/003

EU1, W of 19AB EU1. 1 m². 20-25 cm BSS.

Clearing to the W of SKYNRD's corner in 19AB EU1

found a lot of small stones, possibly silt, but not

picked up except for against the W. corner of the East rock in SKYNRD.

Soil is clay, lighter brown in color.

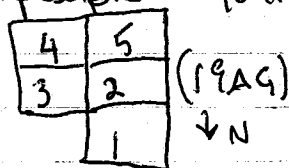
11 Mar '82

Liesel Kuhr

PO2-39-47

19AG (cont.)

Continuing to explore FLOYD as a possible square EU,
Adding 3 EUs to 19AG - 3, 4 and 5.
Marcos and ELY working with me today.



19AG/005

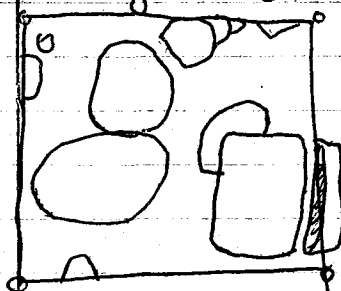
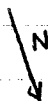
EU3, 2m E of 19AG EU2. Dark clayey-silt topsoil
with 10% 5 cm (ish) rock inclusions. ϕ -20 cm BGS.

Large flat stones at 15 cm BGS (Top). No apparent

pattern, square in NW corner appears to
be tumble (30cm large) because it is broken
and resting a corner on another stone.

This lot contained, obsidian, chert, ceramics.

19AG/005
EU3



19AG/006

EU4, ~~2m~~ S of EU3, ~~2m~~ N of 19V-EU3. This
EU is only 90 cm W/S, probably because of overdigging
in the EUs to the N and S of it. ϕ -10 cm BGS (NE)

Chert, obsidian, ceramics

19AG/007

EU5, W of EU4 and S of EU2. 1m². ϕ -10 cm
BGS. Clayey-silt topsoil.

Green obs, 10cm Censer handle, obs, chert, ceramics

19AG/008

EU5, W of EU4 and S of EU2. 1m², 10-20 cm BGS.
Removed large tumble (30-50 cm large). Clayey-silt topsoil
into heavier clay with gravel inclusion.

11 Mar 02

Liese/Kuhr

Pd2-39-48

19AG/008 (cont'd)

Green obs, Obsidian, Chert, Ceramics,
large and small stones.

Soil is silty silt to thick clay w/ gravel inclusions.


12 Mar 02

Decided to finish exploring FLOYD, in the AG sub op there is nothing but scattered rubble, from which we cannot discern any pattern. It is probably a CU of some sort, though. Going back through the fill N of ERNK to see how deep it is.

19V/016

EU2, N of ERNK, E of 19F EU6 and S of 19V EU2.

E most 70 cm and S most 80 cm of EU, where Crosby is broken. Fill, 10 cm small stones. 15 cm down (20-25 cm BSS)

Faunal Molar, probably not human because it is only 1 cm high (chamber part) and has 4 points , and long roots. bagged with burnt faunal bone. ^{above}

Change in Soil type - at 40 cm BSS, Soil is brown with more clay content. Some silt and maybe a little sand mixed in. Fill is larger stones, lined up in rows at ~~20~~ 40 BSS. Very clear. ERNK visible

19V/017

EU2, N of ERNK and S of L&NRD, E most 70 cm and S most 80 cm of EU. Below 19V/016, ~~35 cm~~ ^{45 cm} BSS * BSS for this and the last lot are taken assuming

The N most edge of Crosby to the W. is 0 BSS.

27 cm BSS*, hit a subrounded flat topped stone running parallel to ERNK, 64 cm N of ERNK's currently enclosed base (it may go deeper), engaged in the W side of the lot area. Will re-visit there.

rethinking
not angry - no longer
believe nothing
sorry about accusation

11 Mar 82

Liese/Kuhr
19AK (west)

P02-39-49

19AK/003

(cont'd)

The S. wall of this EU has a low wall line embedded in it. The basal line (between 5 and 20 cm BGS ^(N/S) run) is really clear. Also corners clearly where SKYNRD CNDS, with a N/S wall S of SKYNRD.

Naming the wall on the S. edge of 19AK EU 1 DOBBLER. The wall begins 35 cm E. of West wall of 19AB EU 1, and runs E/W. It is 40 cm S of the N. edge of SKYNRD.

PLAN For Future: Go S. 1 m, to 19AK EU 2, and W one more meter.

Cut up through fill on E side to find ERNK (Through 19U 1 and 2)

12 Mar 82

Tuesday morning. Clear & Sunny, a bit cool. Started work at 7:30. Luis and Manuel are off with Kristin until 10:00 or so. That slows me down a little, but at least Marcos and Ely are faster than the other two.

Going to try to finish today (Fingers crossed)

19AK/004

EU 2, 1 m S of EU 1 and 1 m W of 19AB EU 2.

Ø - 14 ~~cm~~ BGS

37 x 44 cm flat shaped stone, 70 cm E & W wall, against E and N edges of EU. Top is 35 cm above Dobblers and 60 cm S of Dobblers N. edge (by the base) edge resting on top of large boulder in EU to the E.

12 Mar 02

Wesley Kunt

P02-39-50

19AK/044

(cont'd)

So at ~~10~~ cm Bss, this is what we have:

DOBBLER running along the front of the building, then

~~possibly~~ a possible ~~lean~~ tumbled wall on top of it,

or tumble from a higher step to the S of DOBBLER.

The E most stone in DOBBLER is very nice and flat.

ERNIE is definitely still present in the south of the EU, and the Big Flat stone lies up with another flat stone to its East ($1/2$ the size + 1 in stone)

30 cm above the E corner DOBBLER Stone is a broken sub-angular flat topped rectangular stone, though it may be a severely disturbed part of a N/S wall coming w/ DOBBLER, it is on top of Tumbler Sill. Probably Sill, actually, it is very several small stones (10 cm)

Inclining in the lot down to 30 cm Bss above DOBBLER in the N most 10 cm of the EU, in front of the Sill. Remains latter Sill.

Stopping this EU here, with a pretty clear Sill/Wall behind the first course of DOBBLER stones, with 3 flat stones resting on top of their edge, though they look disturbed.

Lot includes peridot, Obsidian, Chert, Crinoids, bryozoans

Added New EU, 19AK EU3, to the W of 1 and 2. This EU is 1 m E/W by 1.5 m N/S, sharing the entire W. wall of EU2 and the S. most 50 cm of the W wall of EU1. This EU is the ~~ed~~ damaged edge of lot mound and carries the slope of mound cut off by road.

19AK/045

EU3, 1 m by 1.5 m. W of EU2 and the S 50 cm of EU1. 0-10 cm Bss.

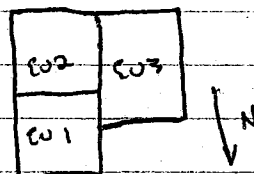
12 Mar 02

Liesel Kuhn

P02-39-51

19AK/005 (cont'd)

This is the farthest west I think I will go, since the mound to the E of the road is most likely disturbed, moved soil.



large plumbea shed.

Named a wall, SYLVIA. Technically it is in Kassia's area, but it is my "intellectual property". SYLVIA is S of CROSSBY, in 19J/84 and continues to the W edge of 19Q EU6 (Kassia's) where it seems to corner back to ERNIE.

SYLVIA is composed of 7 very large, oblong flat stones of various types, including Limestone.

Soil in AK/005 is clayey silt topsoil.

Extremely clear like on 4 flat stones, about 5 cm Bss from directly above them on the slope. 70 cm S of N. wall on the E side and 80 cm S of N. wall on the West. Stones line up with step above DOBBLER really well, no doubt here. Naming Step

WENDYL.

ERNIE is still present in the S. Edge of the EU.

Obsidian, chert, cinnabar, plumbea.

19AK/006

EU3, W of EU 2 and the ⁵ almost 1/2 of EU7. 10-20 cm Bss (NE corner). Turbide, clayey silt soil with 20% rock inclusions of 5-10 cm stones. Really big Root. Area N of WENDYL, 70 cm on E and 80 cm on W. Green Obs (maybe?)
1 of 2 will continue tomorrow

Nmost.

12 Mar 02

Liese Kunt

P02-39-52

19V/017
(cont'd)

Probably wall (lower or earlier Crosby) going down to 40 BGS. The long oblong brick mentioned above is part of that. Only ceramics, really small bag. Fill.

19V/018

EU2, 55 ~~to~~ 55 cm. below 017, S of Crosby and N of ERNE. 20-40 cm W of S edge of EU. ~~40-50 cm BGS~~

Many fragments, 13 cm long, part of fill. #ed. 40-50
Soil still brown silty clay.

After removing a layer of large stones (20-30 cm^{big}) just soil with small stone (5cm) occasionally. Stones were at about 40 cm BGS.

Soil change to midden sand beneath whole site so far. Base of wall continues into midden layer; many smaller stones.

→ I wonder if the layers of small stones is older, and the larger stones were added later with the addition of Crosby and LYNED.

Animal bone fragment.

1 of 2 will continue tomorrow.

13 Mar 02

Luis and Manuel continuing where they left off yesterday with a second set of bags, on 19V/018.

Cleaned up René and stopped at 45 cm BGS because wall ERNE stops at midden layer. — nevermind, kept going to be sure of ERNE per ED.

I adjusted depths of lots 19V/017 and 018, though it seems they overlap, they were separated by a course of fill stone that they dug off the 10 cm increments.

13 Mar 82

Liesel Kuhn


P02-39-53

Started work at 7:20 am, hazy and cool. Marcos & Ely are continuing where they left off in 19AK/006. Manuel and Luis are continuing where they left off in 19V/018 as well. I'm almost finished, and I am going to to the Schematic Map today (drawing in all my CUs so P+C can take transept points).

While trying to do lot cards last night, I noticed that my depth measurements in 19V/016 → 018 are off. I will look at it again and fix it.

19AK/006

(cont'd)

Found a green obsidian ornament, 2.5 cm long and 1 cm tall.  (to scale). Possibly a lip plug? Bill should really see this.

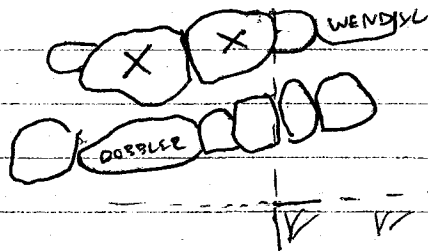
Per Ed, removed tumble from N of WENDYL and above DOBBLER, in EUS 2 and 3.

Including in lot Weston 40 cm of the stone necklace area in EU 2.

All is Tumble, including Tumbled fill.

Remaining mostly 10 cm ish fill stones.

IN EU 2, Taking out 2 flat but disturbed stones that are in line with WENDYL but slipped forward, to see if WENDYL is clearer below. The Rows are about 25 cm wide and sub rounded.



Underneath the line is not much clearer, the large (30 cm) stones that make up the Wall in

EU 3 stop 30 cm into EU 2,

where it all becomes uneven tumbled fill.

However, it is now in line with the western part.

13 Mar 02

Liese/Kuhr

P02-39-54

19V/018

(cont'd)

Found bone frag.

ERNK goes to 60 BGS, ending on midden layer.

On the E profile of this lot, there is a stacked edge of ~~several~~ large blocks, a 25 x 15 cm one in the middle

30-45 cm BGS, resting on top of irregular ~~blocky~~ rocks that continue below the base line of ERNK.

On the west profile, the fill stones are on the same level as ERNK's baseline.

* Get, make up depths in this again - the floor is 70 cm BGS, non exc. surface is 20 BGS. Lot list is right

19V/019

SE end of 19V, EU4. Smallest 30 cm and W most 50 cm. N of ERNK,

Exploring the large squared block visible in the E profile of the exploratory trench to 70 BGS in EU3.

Removed fill stones, about 20 cm large & pretty uniform size. Before, I presumed they were fill, but there is also a possibility, given the large stones below them, that it has timber. Removed about 10 cm, from 10-20 cm BGS.

Also cleared around stones on the level of 20 BGS in the N end of the W most 50 cm.

Small bone frag

19V/020

EU2, 53 Smallest cm, on W most 30 cm of EU. 20-30 cm BGS (NE)

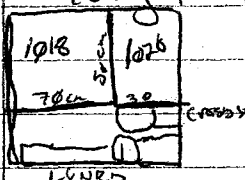
Exploring a possible filled in niche, going to look for a deer wall on the W.

Green oxidized blade, really sharp, stuck in stones of ERNK at 25 cm BGS.

Going to 5 cm BGS, remaining region poked 10 cm thick

Picture of how EU2 has been divided by lots.

EU2



13 Mar 02

Lee Kuhn

902-39-55

19AK/006

(card) also removed broken flat stone on the E end of WENDY in EU2, and cleared smaller stones + rubble from channels. That stone could have been on top of the very large boulder, 40 cm, in the W edge of the NRE in EU2, comprising a flat surface with 2 cut breaks to the S and W of said position.

Also removed 2 stacked but tumbled looking flat + irregular stones from adjacent N of Big Boulder and under broken flat stone that was removed. This seemed reasonable because there was a 20 cm wide flat stone surface below #2, that lined up with DOBBLER's N most line.

19AK/007

EU3, 26 cm (E) to 31 (W) N most cm of EU, N of DOBBLER, 20-30 cm BSS. Finery base of DOBBLER.

Soil's Silt + Clay. Found a small piece of painted red and black striped pottery.

* ADDING 5 cm - now 20-35 cm BSS to reach bottom of DOBBLER.

19AB/004

Clearing from and tumbler of NRE between SYLVIA and DOBBLER. EU2, at 30 cm BSS.

Found several Bone in SW of EU, in pieces but all same bone. Just E of the large boulder. A large piece in the SE corner next to ERUI's base. This bone was larger than the first, could be human? It is in tumbler, so probably not a bwin.

Found a circular piece of pottery with a hole in the center, an ear-spool, 3.5 cm across. Bagged with ceramics. Burial by a river. Soil is very rocky Silt + Clay.

13 Mar 92

LYNARD

PO2-39-56

19V/020

(cont'd) - Now well, this is most likely all funkle.
Ending lot,

Going to start cleaning things up so I can take final notes.
Manuel and Luis will clean between CROSBY and ERNIE/
The S. Edge of my Trench Through 19F EU6, 19J EU3, and 19J
EU4. Removing dirt and shell stones above Fill there.
Bagged as ~~19J~~ 19J/031.

→ Merging 2 sets of notes HERE, 2nd set will now be follow up/
Ending notes.

19J/032

19J EU3 and 4. Above LYNARD N of CROSBY. Clean
between stones.

19AB/004

(cont'd) Same bore, cranes, 14x15.

19J/033

19J EU7 and 19K EU1. Clean above SKYNARD, removing
sand and shell stones.

19J/034

19J EU 3+4, In front of LYNARD. Removing Skyman from face of
LYNARD.

Finished Excavation!! Yay! Just in time for the end of
the day. Won't have workers Tomorrow.

13 Mar 82

Lester Kuhn

PC2-39-57

FINAL NOTES

UNIT Name	Length	Width	Height	Alignment	Courses	Top measure	Bottom Measure
FLOYD (E/W)	67 cm	112-120 cm	20 cm	90° E of N 90° E of N	1	100 95 BDP	115 BDP
LYNARD (E/W)	495 cm	30-40 15-25 cm	20-40 cm	90° E of N	3	41 BDP	82 BDP
CROSBY (E/W)	500 cm	15-26 cm	35-50 cm	100° 20° N 100°	3	25 BDP	75 BDP
SKYARD (E/W)	400 cm	16-43 cm	15 cm	90° 100° E of N 90°	1	75 BDP	90 BDP
SYLVIA (E/W)	330 cm	25-40 cm	15-55 cm	105° (E of N)	2	10 BDP	65 BDP
DOEBLER	240 cm	18-27 cm	15 cm	105° (E of N)	1	60 BDP	75 BDP
WENDY	235 cm	25 cm	10-30 cm	105° (E of N)	1	33 BDP	64 BDP
ERNIE	1150 cm	32	80 cm	100° (E of N)	5	5 BDP	35 BDP

For FLOYD, the unidentified EU, I used the width for the N/S correction & stone S of the Base, Length is the E/W length of the base piece in RF EU 2.

Highest point of BERT is 18 cm BDP for KASSIA = 10 cm ADP
Highest pt of ERNIE is 30 cm BDP for KASSIA.

Datum Point is on ERNIE, 75 cm S of 19J EU 4's S. edge
CROSBY's Bottom point is in 19V EU 2, where we dug through the fill to the bottom of ERNIE.

14 Mar '88

Liese Kuhr

PDD-39-58

FINAL NOTES

UNIT NAME	LARGEST ROCK	SMALLEST ROCK	MODAL SIZE	ROCK FORM	MATERIAL
FLOYD	h : 20 cm W : 68 cm L : 18 cm	6 h 20 W 15 L	10 h 25 W 20 L	Angular Sub rounded	Columnar Basalt limestone, basalt
LYNCH	14 L 20 H 30 W	15 W 10 L 5 h	8 h 20 W 20 L	Sub angular Angular	basalt, Columnar basalt
CROSSBY	25 L 30 W 12 h	7 h 15 W 15 L	15 W 20 L 9 h	Sub Angular Shaped	Basalt Limestone
SKYRED	38 L 35 W 8 h	8 h 16 L 10 W	30 L 30 W 8 h	Sub angular Shaped	Basalt limestone
SKULLA	13 h 30 W 70 L	10 h 23 W 30 L	10 h 25 W 35 L	Shaped Sub angular	Limestone basalt
DOBBLER	10 h 40 L 28 W	7 h 15 L 18 W	10 h 23 W 13 L	Sub rounded Sub angular	Limestone basalt
WENDY	30 h 40 W 30 L	13 h 17 W 20 L	10 h 27 W 20 L	Sub angular Sub rounded	Limestone basalt
ERNIE	15 h 30 W 45 L	5 H 5 L ? W	10 L / 30 5 h / 20 W? / 25	Sub rounded Sub angular Shaped	Limestone basalt

lower

upper level

14 March

Wesekunn

P02-39-59

Final Notes Structure 101.

ERNIE Came First, As far as I can tell, all of it. Both exposed parts go to the same depth (about 25 BDP) and share the same Stone Sizes and Construction type: long, narrow stones cycled with small stones on the bottom 50 cm (ish) and much larger 20-35 cm on the top 2-3 courses. The change in type occurs at about the same level as CROSBY's top course (25 BDP).

The whole wall maintains the same orientation 100° off North, as E/W wall. ERNIE + BURT (where exposed) averages 50 cm wide, none of the walls cut N of it have 2 sides, suggesting they are all steps/surface edges.

SYLVIA is ~~located~~ adjacent to ERNIE's N face is between 19A and 19X EUG and 19J EUG running E/W, 3.30 meters long, and possibly extending to ERNIE's E edge. Oblong shaped/semi angular Limestone block between ERNIE and CROSBY, 46 L x 28 W is on line with SYLVIA at the ^{end} of wall at Structure 101, as are 2 other subangular rectangular blocks in 19F EUG. The area in between was badly disturbed/tumbled for unknown reasons.

SYLVIA's identity is a little unclear. Though its largest block 1 m E of 19Q EUG, is firmly in place on top of small stone tumble, the stones to the W are at slight angles and appear to have been set on top of rubble ~~thence~~ fill in front of ERNIE.

P+C Notes:

Gap between steps on W and old original LYNNED projection coming away to the west on ERNIE, fill in gap original corner on W side of 19F EUG, projection to N side. then SYLVIA + LYNNED added.

14 Mar 62

Lesekerr

POZ-39-68

19J/036 - EU4, SKYRD New.

Removed most SKYRD Stone-bronze limestone -
and removed ~~SKYRD~~ Soil down to EU floor to
near corner of LYRD. we realize that SKYRD
used to wrap around LYRD, but the corner was
badly disintegrated.

LYRD seems corner further S than I thought,
but does corner clearly here. It doesn't go any deeper
than the level on which SKYRD rests.

NO change between LYRD & Crosby, which suggests
the structures are contemporary, at least from the side.

CROSBY sits on top of fill, at least the upper course
that exists now.

After clearing the rocks and soil from S. of Crosby,
discovered that the upper course of head stone
in Crosby sits on a line of large (30-40 cm) stones
under S of Crosby. Line of large stones goes W,
starting at the junction between old LYRD and new LYRD West.
Perhaps Crosby was propped on top to charity
Adaptation and older parts.

Okay, so first there was ERNE, then W.
Starting to?

1 m. large stones under Crosby are surface going back
to ERNE, I never went to clear it.

The line of large base stones of LYRD look
a lot different than the first 50 cm on the E of the
wall. Why that big stone?

From exposed area I guess there was an older wall
way under Crosby, today in fill, at least 25 cm above
base of ERNE.

Overlay of corner Crosby and Newstep LYRD, maybe
extension west. Since ten SKYRD. Old Crosby = 1 m. below surface?

35m to
upright?

15 Mar 02

Leszek Kuch

P02-39-61

FINAL NOTES

Going to Finish today! Its Friday. Starting work at 7:20.
I have a crew Vivian and Antonio, they are going to
Clean up after my "exploratory traveling" yesterday.
TBD: Pictures, Soil Colors, list of "clues". I think I will make my final
writeup at home, so these notes are very messy.

19J/037

E3 and 4, S of CROSBY and N of ERNK. Clean off
the surface I found yesterday. 10-20 CM Bgs(?) - 10cm B CROSBY top
Ceramics and lithics. This is Tumble/Terrace details
I think, though it may be late fill with CROSBY to
raise the level of the platform.
Cleaned off LYNRD to E well, added to Bgs.
Cleaned whole structure, put in bags.

Theory now:

- ① ERNK
- ② low step (sub-CROSBY) N of ERNK, maybe to E edge and
no smaller than E LYNRD. unclear dimensions
- ③ Enlargement of sub-CROSBY
- ④ Attach LYNRD to front of CROSBY (unlike from E end gap,
sub CROSBY goes below top of LYNRD) * Excavate E corner to create depth
recessed.
- ⑤ LYNRD + CROSBY added on to vertically, final phase CROSBY
popped on top. * Connect w/ SYLVIA? - connect at present W,
then... * SKYNRD on top
- ⑥ Sub SYLVIA, wall at back edge of SKYNRD, and SKYNRD
added at same time. (First rect. Stage in 19J/6 same level
as SYLVIA wallstone - level created to be = to sub CROSBY.)
Edge of this phase → corner at W edge of 19J 7.
- ⑦ SKYNRD W added
- ⑧ New corner of SYLVIA and top corner over old, possibly extending
to E edge of 101 - moving NICH, creation w/ vertical base

Other
before
and SKYNRD.

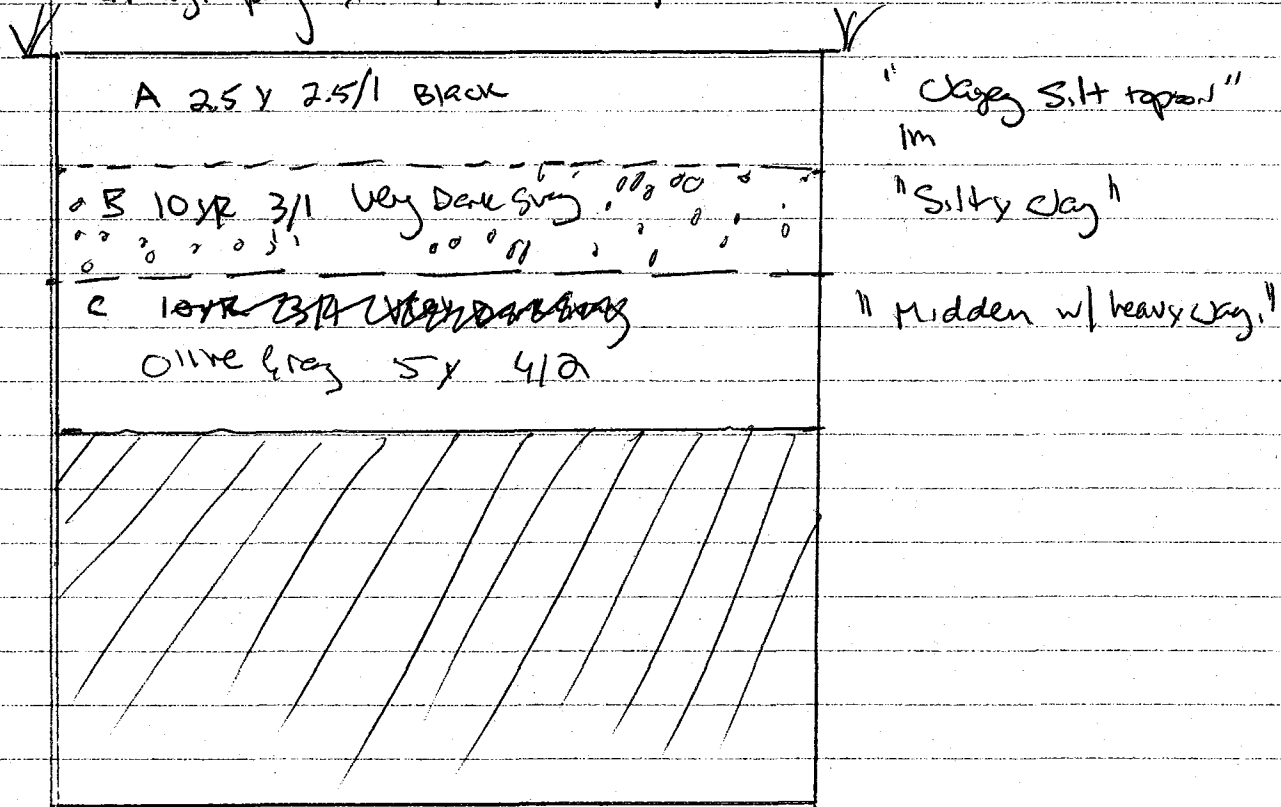
15 Mar 02

Liesel Kuhn

P02 39-62

Color Chart

Stratigraphy from 19F EOL, E wall.



1m

15 Mar 02

Hesse/Kunr 120
Final Notes

P02-3A-63

These CUs make up the Northern Edge of Str 101, which includes a long platform and multiple superstructures.

I opened a total of 12 m E/W Trench following the N Based wall of 101, Exposing 11.5 M of the 101's N Edge, including the NE corner. I was unable to follow all the way to the NW corner because ~~it~~ it was cut off by the modern Road ~~cut~~ ~~the~~

The Earliest phase of Construction was the wall ERNIE, 11.5 m long, 50 cm wide and preserved to 80 cm tall. ERNIE had a E/W orientation of 100° off of North, and 6 courses. The top courses consist of large stones (25 cm), while the bottom 4 courses are made up of 10g, thin stones and chinked with sm. stones. ERNIE is the original retaining wall for the raised CU group to the S.

The Second phase of construction on the E. End of ERNIE was a single step abutting it, Extending 70 cm N, underneath final-phase CROSSY. It is unclear how wide this step was or how tall, but it may have extended all the way from the E corner of the structure to 2.8 m W of it, where a change occurs in the composition of LYNRD (picture taken). ~~between~~ The ^{Eastern} ~~Western~~ 2.15 M of LYNRD (to W/in 70 cm of the E corner) is made of 5 exceptionally large base stones, only the bottom course remains of this section. 2.8 m W of the E corner, ~~these~~ LYNRD's ^{base} stones appear to be ~~apparently~~ ~~german~~ ~~smaller~~ and may have been added later.

The Second phase of construction on the W end of ERNIE was the steps DOBBLER and WENDYL, which abut the N face of ERNIE as well. WENDYL probably came first and is at its original height (still partially faced with a layer of rectangular, flat, shaped stones) - Evident because of the 40 cm barrier that is the E edge of WENDYL. DOBBLER is prob. added ~~close~~ after, a one course 15 cm high step.

15 Mar 02

Liese Kuhn

P02-39-04

Field Notes

These two sets of steps were originally separated by a dirt floor and bare exposed ERNIE.

Thirdly, LYNRD was added to the front of CROSBY, probably as far W as the change in const. type.

Then, 2.2 m were filled in to the W, extending LYNRD and carrying it back towards ERNIE 4.95 m from the E corner of 101. At this point, the additions may have comprised a single long step, 130 cm N from ERNIE, and 4.95 m ~~long~~ long, with a flat stone ~~floor~~ floor extending back to ERNIE.

Afterwards, CROSBY as we see it now was ~~made~~ made, adding 15 cm of fill and edge stone on top of the older LYNRD and CROSBY, which had ~~no~~ floor.

Some time after the LYNRD/CROSBY step was finished, more space along ERNIE was filled in to the west, in the form of a step and a low terrace, 2.2 m long. The terrace, SKYNRD, was a 15 cm high floor of stones edged by very large flat stones, which connected to ERNIE, 1.5 m. wide. SKYNRD's surface is only 85 cm. wide but is overlaid by the badly decayed and previously unnamed step. The step was 75 cm wide, abutting ERNIE and on the same horizontal level as CROSBY's final phase. The surface still retains 3 large flat stones, a square one at the N edge, a sub rounded one to its SE, and a long oblong one which ~~is also~~ is also now a basal course to SKYVIA.

SKYNRD was then extended further west to abut the E. edged DOBBLER, and fill the niche between the E and W constructions. SKYNRD extends 40 cm further N. from ERNIE than both LYNRD and DOBBLER, though it dips south slightly in the center, where the old and new meet. The old SKYNRD has an orientation of 90° off N. The new SKYNRD ~~has~~ is 100° off N.

15 Mar 02 Wesel Kohn

Pd2-39-65

FINAL NOTES

After SKNRD was Extended, the Corner of the upper step was also extended 55 cm W and cornered back to ERNIE. 3 $\frac{1}{2}$ m Rand, flat stones were stacked vertically to make the New corner, with smaller stones wedged into the old wall at an angle. At this point they also added a top course of large stones ($\frac{1}{2}$ m area) on top of the old step, and directly adjacent to ERNIE, creating SYLVIA. It is possible, too, that a piece of corner basin sand found in this niche was originally propped vertically as part of the corner.

THE END

Removed 2 Metate Fragments Used in Construction.
First stone, N of and adjacent to SKNRD in 19J EU6, 105 cm BDP. Given lot # 19J/038. Second, resting on top of 2nd phase of SKNRD, 75 BDP in 19X EU1, given lot # 19X/006.

well, That's all folks. I had fun dabbling in archaeology, I really did. And I learned a lot, too. I just hope they never find the body I buried in 19Q, EU7 at 97 BDP. Whooops, now you know. I guess I'm going to have to kill you. ~~Wesley~~

* Did I mention it was 105 today?