

Kenyon College

Digital Kenyon: Research, Scholarship, and Creative Exchange

Four Valleys Archive

Anthropology

2000

PVC-025-Novic-Field Notes-2000

Juliana Novic
Kenyon College

Follow this and additional works at: <https://digital.kenyon.edu/honduras>



Part of the [Archaeological Anthropology Commons](#)

Recommended Citation

Novic, Juliana, "PVC-025-Novic-Field Notes-2000" (2000). *Four Valleys Archive*. Paper 29069.
<https://digital.kenyon.edu/honduras/29069>

This Field Notes is brought to you for free and open access by the Anthropology at Digital Kenyon: Research, Scholarship, and Creative Exchange. It has been accepted for inclusion in Four Valleys Archive by an authorized administrator of Digital Kenyon: Research, Scholarship, and Creative Exchange. For more information, please contact noltj@kenyon.edu.

Op 7a

axial trench running @ 0° set up on
North face on structure 30

Looking for final phase construction

Start on Northern most square on
original trench

excavate @ arbitrary levels @ 20cm

Northern end excavate N-S

7A/001 @ 20cm

found ceramic frag.

~~Reset measurement
sheet~~

~~7A/002 20-40cm~~

more ceramics

no change in color. Lots of large
stones. Pat suspects its just
tumble but I'm having them dig
around the stones

I'm approaching 20cm

The colors the same. still finding a ~~lot~~
a lot ~~lot~~ of fragments

Ed just came by, perhaps a floor.

I'm removing some rocks

I'm at 20cm on the NE corner
of the 1m square block of square 1
20cm - NE - BGS

This is 7A/001

7A/002 - Square 2 0-20cm 1m²

Color is the same brown

They are digging away.

AP-00-25-2

7A/002

found an interesting white stone
it's just limestone

finishing ceramics

the marking stick fell

color is the same

finding lots of flat rocks
want them to use the delicate tools

13cm - NW corner hit rock

NE corner not completely dug yet

The feature that I have will be
called Beatrice from now on

One was hit on NE corner

stopped mid lot

No rock on NW corner corner

NEAR 20cm. WHAT I THOUGHT WAS
ROCK MAY JUST HAVE BEEN DIRT ???

Today we are finishing up 7A/002
color remains the same

7A/003

Starting on SQUARE 3

Dirt looks like the same color

I measured this one. It's not exactly 1m x 1m

So I'm going to extend the sides 10cms to make it
exact

Encountered PIERDA (Rock) 4 cm BGS

Flat more flat rocks at this level

NE 10cms

NE 20cm

Removed what appeared to be tumble

7A\003 - Block 3

FP-00-25-3

~~THE WALL IN~~

Beatrice is now believed to be a wall.
Beatrice is oriented at 28° she is in Block
~~to~~ 7A\003 is where we are excavating
There seems to be another feature here
call it othello

~~Othello is 3cm below G5 as measured on the
SE corner of Block 3 and trench of 500~~
small obsidian found

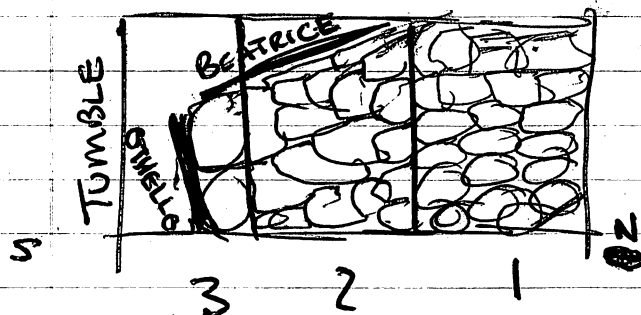
25cm BGS

TUMBLE \uparrow

MIDLINE EASTERN WALL 26

MIDLINE WESTERN WALL 28

HIT MORE ROCKS, FOUND A FEW OBSIDIAN
BLADES THAT WERE A COUPLE CENTIMETERS LONG
OTHELLO, 16cm BGS 12° (??)



TRENCH AS DUG SO
FAR
EACH SQUARE IS
1x1m

COLOR REMAINS THE SAME IN SOIL

FEWER POTTER SHERDS THEN WHEN FIRST BEGAN
EXCAVATION

LOT 3

SQUARE 2, 20-30cm BGS MEASURED NW

SQUARE 3, 0-30cm BGS MEASURED NW

30cm BGS LIMESTONE DEPOSIT, WHITISH SOIL
DISCOLORATION

AP-00-25-4

Came across orange chalky
substance

LOOKS LIKE ONE SPOT OF LIMESTONE

7A/003 0-40cm 50cm IN OR EAST WALL

00-30cm 300 ARE 2 500T WEST

7A/003 pt2

Another piece of limestone otherwise its all the same color

I'm having the men lower square two 10cm
 * change lot card * all this is the same lot
 according to Ed Achartman.

7A/004 40cm - 50cm Square 2 midline

Started lot 4 since am going lower in
 Square 2 and 3

Some isolated areas of color change (orange)
 in eastern end
 taking it down 20cm

Next to Beatrice in Square 2 they've found large
 sherds

Nelson Found 3 sherds that appear to
 connect together, two of the sherds are
 part of a rim

They are finding more sherds 50cm BGS
 Square 2 next to Beatrice
 Beatrice & Othello make Sub-2

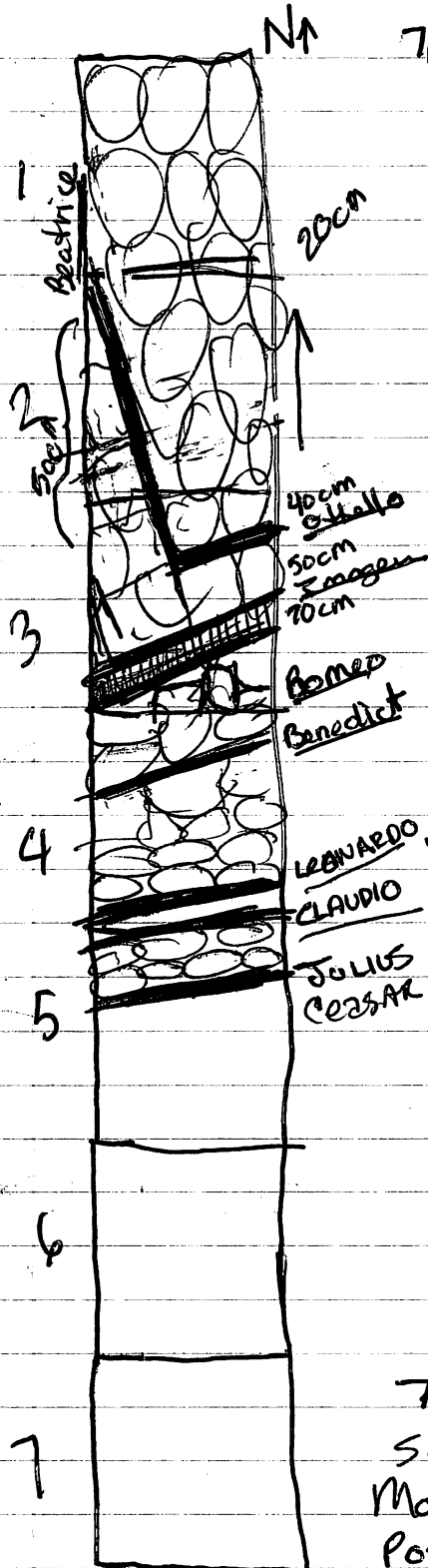
Lot 7A/005 17cm in between Sub-2

and "tumble" block or sieve 3 40-60cm BGS
 There is a chunk of orange "limestone" (according to
 Garrett)

They've found some green unshaped stones
 Removed limestone, taken it to lab.

Found obsidian & sherds of good size
 Named two features 1mogen & 2mogen

AP-06-25-6



7A/006 0cm-40cm Square 4 NE corner
~~Removal mass~~


Retook orientation of Beatrice,
Otello, & Imogen.

Both Otello & Imogen are at a
14°-16° orientation

Beatrice - 29°-30° orientation

① 20cm NE corner

FINDING SPEED, BAHAREKA &
LIMESTONE

Removed a limestone rock
and another rock shaped
like this  because I thought
it was tumble (kick myself)
These two stones were on

the NE corner of Block 4

I think 27cm long (estimate
based on limestone rock
which was saved. → OKAY

Removed tumble in front of
Benedict to uncover Romeo

Found a few shreds and some
obsidian flakes.

7A/007 Square 5 1m x 1m 0-
some ceramics & obsidian
MORE TUMBLE THEN EVER

POSSIBLE FEATURE, WAIT THERE'S MORE

UP- WE FOUND LEONARDO, AND CLAUDIO
THEY ARE AT THE SOUTHWARD END OF SQUARE
FOUR NEAR THE START OF SQUARE FIVE
FOUND JULIUS CESAR

~~AP-00-25-7~~ AP-00-25-7

ROMEO 40cm BGS SE of Sq 3

ORIENTED 110°

BENEDICT 25cm BGS NE of Sq 4

ORIENTED $14\frac{1}{2}^\circ$

LEONARDO 23cm BGS SEW of Square 4

ORIENTED 16°

CLAUDIO 12cm BGS NW Sq 5

ORIENTED 15°

JULIUS CAESAR 14cm W wall at start of
CAESAR IN SQUARE 5

ORIENTED 17°

ROMEO TO CAESAR IS A SPACE of about 2 meters

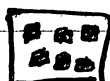
FIVE FEATURES

7A/008 0- ? cm of SQUARES 6 & 7

NEARING SUMMIT, 1 MORE FEATURE

WE REMOVED A LAYER OF TUMBLE IN SQUARE 6 at
this point we've found MORE SHEERDS AND some
GHAREKI. THE SIZE OF THE FRAGMENTS ARE INCREASING

THERE WERE THREE FRAGMENTS AT THIS LEVEL IN

6² that had incised marks like this  definite
pattern to them. New to this trench

Heavily concentration of larger sherds 74cm
horizontal from NE corner of 6² 25cm BGS

Keep finding more sherds. Might be
most since lots 7A1001 & 7A1002

ED SAYS ODD, SINCE I'M ON OR NEAR
THE SUMMIT.

7A-00-25-8

7A/008 NEED PROVENANCE (SP?) BEFORE CONTINUE

20cm NE of 4

13cm NW of 5

~~12cm NE of 6~~

30cm NE of 6

Lots of shreds in SQUARE 6
maybe a handful from 7?

LOOKS LIKE THERE IS TWO LINES IN SQUARE 5

7A/008

0 - 30cm NE of 6 0-5cm SE of 7

7A/009 - SQUARE 7

Sam - 10cm SE of 7 Shreds ONLY IN this lot

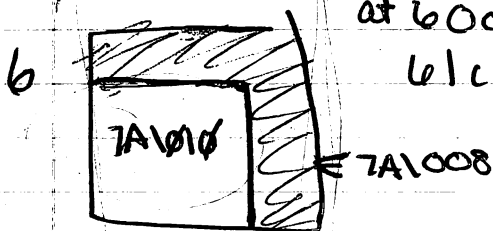
Looking back at squares 2 & 3 I see some deviation of the soil on both E and W walls

18cm BGS of Black

36 ~~cm~~ BGS of ash

46 cm BGS of Brown

7A/010 15cm - 30cm BGS SQUARE 6 measured
at 60cm N-S on East wall from NE peg
61cm E-W on S wall 40cm N of SE peg



Measuring N to S at largest point

Offello is 24 1/2 cm from Imogen Romeo is 48 1/4 cm from Benedict

Imogen is 16cm from Romeo

Benedict is 80 cm from Leonardo

Leonardo is 20cm from Claudio

Claudio is 46 cm from Caesar

Caesar is from Rich III 43cm

AP-08-25-9

SCRATCH 15-40cm IN TA\DIQ

TA\DIQ 11 5cm-20cm 40cm horizontal from
POST SE SQUARE 6 20cm horizontal from Post NE 7
FINDING SHERDS

MANY SHERDS IN THIS AREA
Sherds found at base
of 40cm

SQUARE 6 20-40

47cm between Rich III &

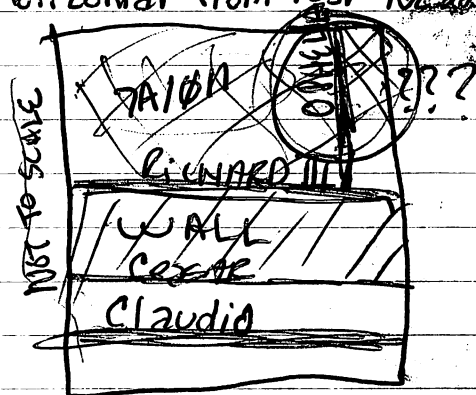
Cesar. THEY MAY make up

2 sides of a wall

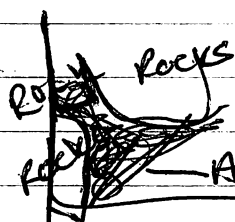
FOUND LARGE SHERDS 30cm W from East wall
24cm BG5 JUST AT WALL level (DIRT WALL)

@ 30cm at SE corner of 6

MORE SHERDS & BATHAREKI FROM SAME PLACE



5



@ 40cm at SE corner Block 6

FOUND A PIECE OF CHERT THAT LOOKS
LIKE FLAKE (A) OF IT

THIS IS IN THAT SAME CORNER OF 6

IN THIS CORNER & SQUARE I'VE FOUND MORE
SHERDS THEN ANYWHERE SO FAR

THE WALLS WERE DUG OUT ON EAST DIRT
WALL

BT - 13° LEO - 17° CL - 17° CESAR 15°

RIC - 15°

AP-ØØ-25-1Ø

7A\012 10cm-30cm NE of 7
22cm BGS, No sherds found yet, quite a
reduction

At last some wonderful sherds, well not
wonderful, but sherds

7A\013

30cm-40cm NE of 7 -

Sherds of all shapes & sizes

a fair amount of large sherds

one 13cm x 7cm found at ~~30cm~~ 44cm under a
rock, sherds are being found between rocks

Pat says there is a line 20cm S of Rich III - Hamlet
and she thinks Ophelia does indeed exist

Clearing off more of 7

30cm-40cm @ NE of 7

Beginning to clear off 8 7A\014

2-9-2000

7A\014 - 8² - 0cm - BGS

continue clearing off first level 10cm(?)
possible depth, difficult because of cobbles and
stones

Huge rock / boulder takes up most of SQUARE 8
So far only 2 sherds have been found

Ed thinks the big rock belongs to the wall of this
summit. Those two rocks that were so perfectly
laid next to each other still haunt me, but I'll
bow to the wisdom of more experience

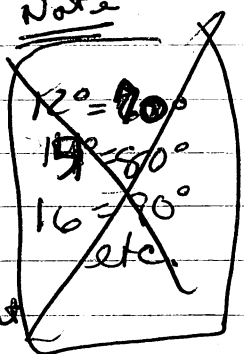
AP-00-25-11

we have a few more sherds in Square 8
They've been found close to the line I suspect
is coming out under Henry the Stone
7A/014 0-20cm at SE corner

7A/015 20cm - 30cm at deepest point due to
a few sherds amount of rocks 57cm x
70cm IN Square 8

7A/016 0-20cm of Block 9 NE corner

There are a few possible lines in 8²
Ophelia keeps going and going. at present
~ 3 meters based on the # of blocks she
encompasses. Henry may or may not be on a line
that will bear his name if he is Henry is 42cm x 39cm
oriented ~~210°~~ 210°



Made mistake on past orientations 210°

to read look at key, no, it doesn't work
Retaken accurately - orientation

Beatrice 162°
Othello 60° 82°
Imogen 82°
Romeo 82°
Benedict 82°
Leo 95°
Claudio 95°
Caesar/Richard 90°
Hamlet (?) ?
Ophelia 180°

TUMBLE IN 9² BEING
REMOVED
FINDING SOME SHERDS
FOUND an interesting
larger sherd near S
wall of 9²

~~Small~~ A small chert blade
found here in 9²

AP-08-25-12

7A/017 measured at ~~NE~~ corner of 9²

20cm - 40cm BGS

There was what appeared to be a line,
Brian said that I could remove it because
the line Ed saw was behind it, Brian said
it was okay if I found sherds. I found
sherds. Keep fingers crossed.
Well, it looks like that line was a line.

7A/018

40cm - 50cm BGS @ ~~NE~~ corner of 9²

Sherd of obsidian

7A/019

50cm - 80cm

10 Feb 2000

finding sherds in square 9

line forming (being uncovered) - Tybalt

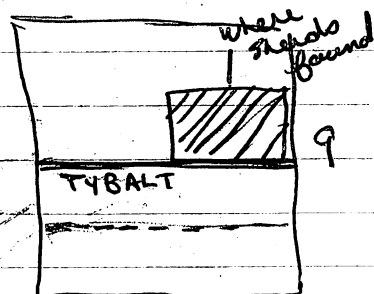
Near western dirt wall, below Tybalt (S end)
of 9²
encountered 2 sizable sherds

16cm x 10cm & curved lip 7cm x 7cm

Henry is part of Tybalt

Sherds in abundance found
in that corner. Also a few
lithics

Found 2 larger pieces on the
southern dirt wall of square
9



ARMANDO FOUND SOMETHING THAT CREATED A RED
POWDER, I WAS AT MY NOTES AT THE TIME
SO I COULDN'T STOP HIM, BUT I SAW THE AFTER
EFFECTS (S9)

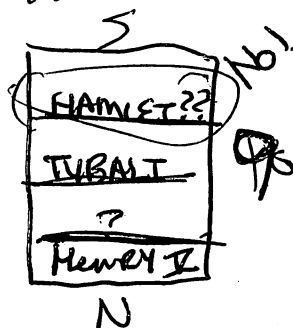
7A/019 50-80 BGS NE

7A/020 80-105cm

Sherds so far possible wall
Dark red stone found next to
what maybe Hamlet, a projected
line.

Cleaning up and then moving
back one

AP-00-25-13



7A/021 0-20cm in 10²
Nada

From NE Reg

7A/022 0-40cm in 10²
few sherds so far
making square level

7A/023 40cm-60cm in 10² NE Reg

sherds & obsidian flakes

Henry II's Square 9 exists

FINDING MORE SHERDS THE DEEPER WE GO

Another line seems to be forming ??

Macbeth? ~~One~~ Armando is working on the northern

side, and Nelson on the southward. BOTH ARE

FINDING SHERDS LARGER ONE WAS FOUND

NEAR EDGE OF 99/10, SOUTHERN BORDER, IT

WAS A RIM, 708 NEARLY SQUARE 

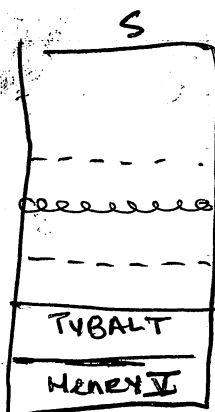
CHEST CORE @ 9 of 10

A very large broke while removing it

Bagged separately, with all sherds

FINDING ~~many~~ FOUR OR FIVE ^{or more} PERCENT SIZED
SHERDS IN CORNER OF (SW) 10²

FINDING MANY SHERDS & LITHICS



AP-06-25-14

7A/024 60cm - 70cm

62cm & Horizontal

Squares 9 1/2 x 1 1/2 cm

(Twist between the pegs)

Shards found already removed some more rocks in front of Tylab & friend. Underneath were a few shards. Including one that was broken in half.

Area is below the

NE stake/peg. Many

shards are being found

in this vicinity

Also found in that same

area, two shards of red pottery that has a design on it of some sort

Found a tiny bone

They haven't moved digging location

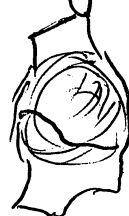
Found many pins and shard pieces

getting some pretty painted shards

Corner of Diet wall EAST, rim with what

seems to a decorative handle

Real tiny bit of obsidian



It is curved with a shallow bowl

Dimensions 13 x 7 1/2 cm

0

62cm - Horizontal

7A/025 70cm - 80cm

M @ NE post of 9 area

FINDING A SHITLOAD OF SHARDS,

Found small pieces of carbon, not big enough for testing according to Brian

Came across another piece that's too small

The workers tell me the dirt is very loose

A larger shard with a decorative handle



That's incised Near Western dirt wall

• another one on opposite side (Northern) on Western dirt wall. Bit bigger handle

7A/Ø25 cont

APF-ØØ-25-15

NOW FINDING SHERDS ON EASTERN DIRT WALL, LARGE PORTION OF RIM IN WALL BETWEEN ROCK - TWO LARGE RIMS CONNECT TO FORM PART OF A HUGE RIM 80cm

HAVING THEM FINISH 7A/Ø25 UP

WE HAD SOME SHERDS STUCK IN THE 11-Feb-2000 WALL, & LAST NIGHT SOMEONE CAME BY AND BROKE THEM OFF AND LEFT THEM.

7A/Ø26 60cm-80cm measured @ NE corner in rectangular area that completes 10²

Sherds are coming out in clusters of larger sherds

we are also finding LITHICS

Chunks of obsidian that is only smooth on one side. These seem to be waste chunks

Out came a huge chunk of a jar with part of the shoulder and tiny ~~is~~ incised handles. It looks like the jar was probably larger in size 23cm x 12.5cm, 5cm handle

Pulled out another decorative handle. This one incised and with appliques.

another piece matches up with it. They look like they were painted red.

We are fast filling a bag and we aren't halfway through with this lot

I'm following Bryan's advice. There are way too many sherds under the rock for them to be forming something

AP-00-25-16

Most of these sherds are being found between 70cm & 80cm another large bowl shaped sherd.

Why are there so many large sherds here?
AND ANOTHER GIGANTOR

I'VE NOTICED ALL THE LARGER SHERDS, THE ONES THAT TAKE UP A WHOLE BAG IN WIDTH, ARE ALSO THICK
15 1/2 cm x 20 cm 1.3 cm thick, THERE ARE ALSO FINE SCORING LINES ON THIS ONE

more obsidian waste flakes & chert

found another part of the decorative handled jar. It looks like it had more than two handles They were found in the same lot but in different locations

More large pieces of pottery. ~~are~~ How common are these gigantic pots

FINDING MANY MORE SHERDS MOST OF THEM CAN BE FOUND AT THE LEVEL CLOSEST TO 80cm.

FOUND OBJECT, THICK POTTERY, HOLLOW HANDS & FLAT BASE VIEW DOWN PAINTED



FINDING SOME

PAINTED SHERDS AND MANY OF THE SHERDS THAT WE ARE GETTING SHERDS THAT FIT TOGETHER THEY ARE ALSO LAYERED ONE ON TOP OF THE OTHER

 LIKE THIS

FOUND A SHERD WITH A HOLE IN IT

FOUND CARBON, BUT THEY KEEP TOUCHING IT IN THEIR EXCITEMENT

NEARING END OF LOT. , MAY HAVE GONE PAST THE METER MARK ACCIDENTALLY, BUT NO SHERDS CAME OUT OF IT

AP-00-25-17

7A/026 cont. 3

Another LARGE SHERD 25cm x 16cm, THIS IS
THE DAY OF LARGE SHERDS
FOUND A BURNISHED SHERD
MORE HANDS

IN 8-9, & 10

EDGE OF FEATURES IS
HAMLET, HENRY, & TYBALT

~~END OF AXIAL TRENCH~~
END OF AXIAL TRENCH

START OF CLEARING TRENCHES 7B

7B/001

0-20cm MEASURED AT NW CORNER OF SQUARE 1, NEXT TO
SQUARE 3 OF THE AXIAL TRENCH

TOPSOIL - A HORIZON

FOLLOWING FEATURES ROMEO AND IMOGEN, IN THIS LOT
WE ARE FINDING SOME SHERDS, NOT MANY, AND SOME OBSIDIAN
FLAKES

14-Feb-2000

7B/002 20cm-40cm measured at NW corner of
Square 1, to the west of Square 3 of the axial
trench of structure 30

finding sherds in the first ten centimeters

finding alot of chert flakes in the first 10cm
small flakes of obsidian in SW quadrant of this
square (1w3)

Small half tube of ceramic(?) found, no was wrong
not ceramics, small calcified bones, according to
Lorrett.

filling up a 9x14 bag with sherds
an interesting obsidian flake/shard was found in the
SE quadrant of 1w3
They haven't hit 30cm just yet. They've hit quite
a few large stones that I'm having them clear
up

obsidian flake

AP-00-25-18

found more of the circular, hollow
calcified bones in the northern dirt wall of this trench
found in the middle point of wall 15cm down
in wall, exposed
about 3cm obsidian blade

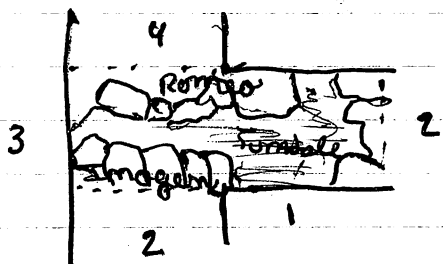
Day - sunny, warm
My mood less than optimal

Removed some rocks, they seemed to have flat sides, but
they were in an angular placement
went further down filled a 10x16 with sherds
following Romeo, uncertain rock floor

TB/003 0-20cm measured at NW corner of Square 2
to the west of Square 3 of the apical trench of
Structure 30

finding some sherds, haven't hit rocks yet.
obsidian, small piece

Ed and Pat suspect that both Romeo and Imogen
have ended. Romeo appears to have a corner



TB/004 20cm- measured at
NW corner of 2² w 3² apical trench
of structure 30

finding sherds and a little bit of
obsidian, some more bone pieces.

A piece of chert that looks like it has chips coming
off of it. finding quite a few lithics. Wonder why?

* interesting lot for next week list *

Very tired and not feeling too well today. Hope
I'm getting everything down

AP-00-25-19

7B/004, measured @ 20-25cm, between rocks

7B/005 - Backdirt lot Bahauke corner from excavation
of axial trench

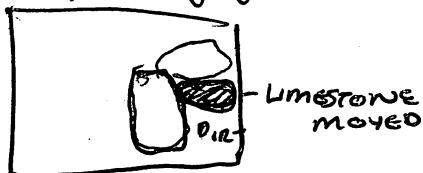
15-Feb-2006

7B/006 - 40cm - ? measured @ NW of 1²W3²
increased cleaning between what may be the ~~same~~
end of Imogen

finding sherds in this cleanup

A piece of flint limestone was just moved from place

1W3



Today's weather: cool, sunny, clear skies

Not as unbearably hot as yesterday was

My mood is alright today. Almost cheery.

7B/006 40cm-45cm @ NW + moving rocks
IN - 2W3

this lot comes from underneath rocks encountered
during initial lots in this sub-operation

Ed said to remove an area of the "pavement" that
was not as tightly compact as the rest of the square
this area is the SE quadrant of the 2W1

Possibly post hole, suggested by Ed

Underneath those rocks were encountered some
flattened pieces of limestone, which I'm having
them clean out

The flattened piece was a piece of limestone
which my guys pulled out while I wasn't looking
They've found pottery sherds underneath it and
a chert core

7B/006

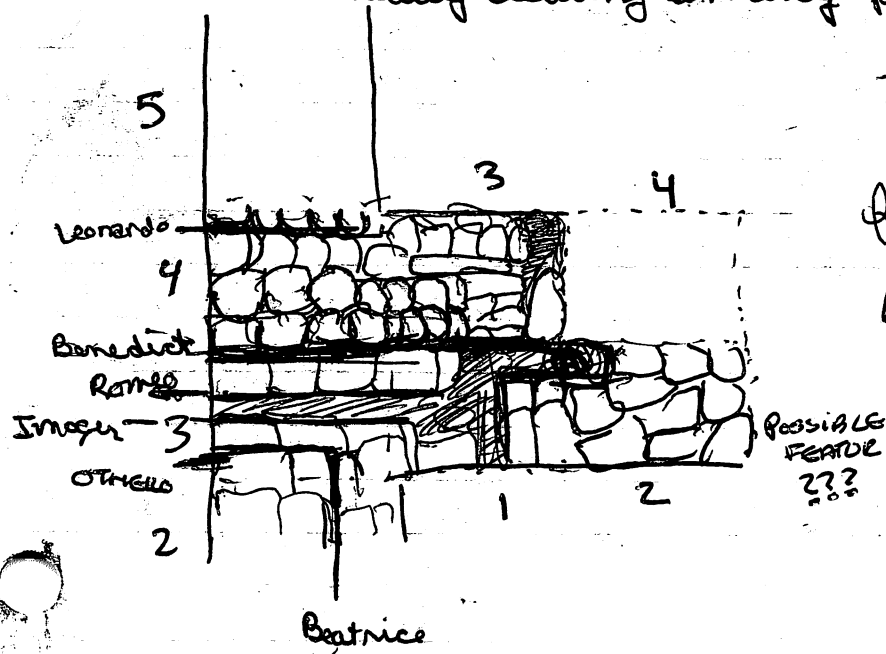
AP-00-25-20

obsidian underneath those ~~was~~ rocks.

Perhaps ed was right and the limestone shows signs of the post, maybe not because shape is wrong, but that rock seems modified, and its very intriguing that the ~~see~~ chest and obsidian was found underneath it

7B/007 0-20cm measured at SW corner of square 3 to the west of square 4 of axial trench - fill & tumble

@ 20cm but lots of rocks, which I'm now removing. Mostly removing fill and tumble & hope they end up going below 20cm with this lot. Well see, Very few sherds and other artifacts, comparatively to previous areas of excavation. If its all fill then having them clear off only the dirt because Leonardo is made of smallish rocks can't seem to find Leo. Idea just struck me. What if Leo is just part of Benedict and not a separate wall. Uncovered the continuing saga of ~~Benedict~~ BENEDICT Not really clearing in any particular pattern.



7B/008 0-20cm @ NW corner square 4 w of 4 for awhile there was no sherds or anything Now they've come across rocks. Some sherds, maybe a chest core, chest

ⓑ - is from where limestone "tortillas" was removed

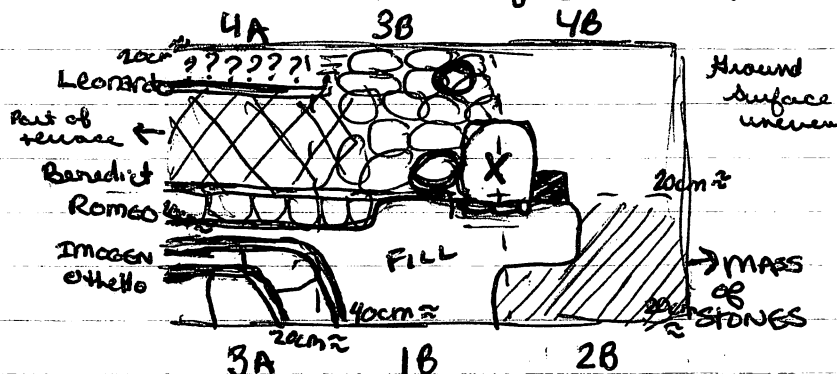
16-Feb-2000

AP-00-25-21

7B/009 20cm-? @ NW corner of 4 w 4

cleaning in between rocks for better view of the stonework. Suspect large stone is corner stone (X on sketch)

outline sketch of structure



Chert and sherds have been found in this lot so far & obsidian

Weather: cool, possibly warmer in the evening and afternoon, ~~not to~~ ~~present~~ cloudy, little

sunlight. Mood: fair to moody depending on most of vicin fluctuations

22cm in between rocks and tumble, sherds & stuff from cleaning

7B/010 Removing some rocks at face of BENEDICT/ROMEO. ROCKS BEING REMOVED ARE FAIRLY FLAT. WHERE I THINK THE TURN CORNER WHATEVER, WAS HOLLOW, ONLY DIRT. (DARK SPOT ON SKETCH)

TONS 'O SHERDS FROM THIS AREA may have hit base of BENEDICT/ROMEO

43cm-60cm measured at NW of 2B/3

2x 43cm around corner of ROMEO/BENEDICT. MUCH WIDER THAN CAPTURED IMOGEN & ROMEO

7B/011 cleaning off rocks

MARKED PUPPY

AREA BENEATH PUPPY IS FILLED WITH THE TINIEST COBBLES PROBABLY FILL OF TUMBLE BUT WH. STONE NEXT TO PUPPY HAS SHARP EDGE, NEED TO REMEMBER THAT PUPPY WAS THERE TOOK OUT THREE ROCKS NORTH OF PUPPY. THE SEEMED TO BE OUT OF PLACE. TRYING TO SEE WHAT'S UNDERNEATH

some shreds and

AP-00-25-22

a couple of obsidian bladelets

Pat & Ed don't want puppy to be part of BENEDICT
OR ELSE THEY DON'T THINK IT IS.

This is a sketch of the corner and what I
think I have

Check out LIZ'S &

SMOGEN/VERITY'S
TRENCH



= my idea

To test this idea, I'll clear the rocks surrounding
the one stuck out

LOT NOT FINISHED!

17-Feb-2000

7B/012 inbetween my suspected wall & other feature
finding fair amount of shreds

Today: Cool and shady with the promise of becoming
unbearably hot

Mood: fair to friendly, is pretty good

20cm x 55cm 40cm-60cm @ NE corner 1 of 3

BACK to 7B/011

FINDING SOME SHEDS and a obsidian blade

I'm feeling very tired today. finding some chest

The workers moved the "perhaps" corner rock, & then
tried to put it back. Shit! Well, at least I know
where it ~~was~~ was



Sheds and obsidian

-this was shifted Good deal of sheds

coming from my projected line in 3#4 W4

Quite a bit of obsidian

Increase in sheds and obsidian in area below
Projected line, not obsidian chips

AP-00-25-23

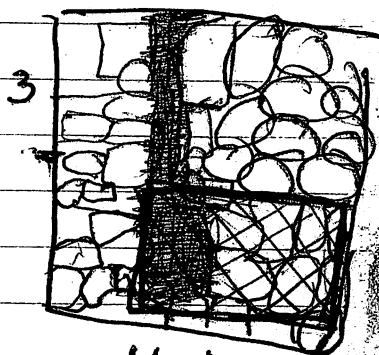
Should I have switched pots. Most of the Shards
Come from in front of stone walls
Finding shards next to cornerstone, under the rock that
was removed

There is only dirt under that here

~~Optional~~

Horizontals of TB/O/1

30cm \times - 70cm \times , in front of on Benedict



Lot TB/O/11

TB/O/13 0-20cm at NW corner of square
5 west of Square 5 of axial trench of
structure 30

already found a surface piece of
obsidian

18-Feb-2000

TB/O/14 0-20cm BGS @ NW of Sq 6 west of Square 5 Axial
weather: cool and crisp with usual promise of a
frying pan

mood: half awake, promise of a happy day

TB/O/15 Backdirt to the west. found something of ground-
stone, not sure, but possibly an artifact. Bagging
it, just in case

TB/O/14

found a few shards and some kajiyaeki

TB/O/16 - cleaning in square 5 w5
found obsidian blade piece, & some shards
Pot removed the two stones that were piled above
the one accidentally removed yesterday.



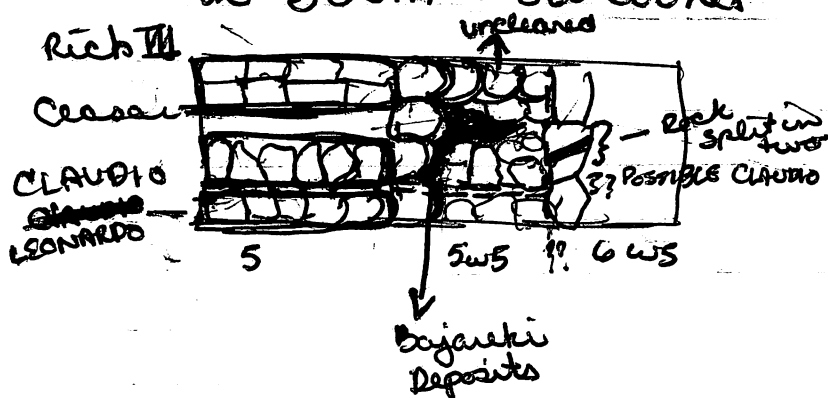
Shard

Perhaps it was because there seemed to
be nothing behind it. Who knows?

AP-00-25-24

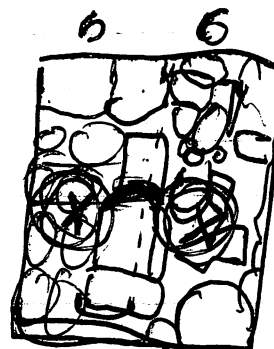
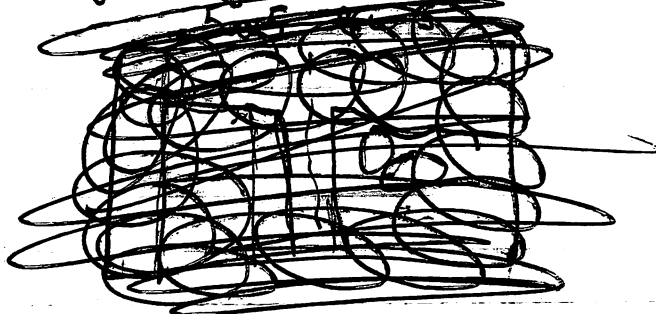
I'm checking it out. Just lots of dirt. I left the sherds to be taken with that lot in 7B/016 finding "debitage" obsidian. Nice smooth rounded flakes finding flakes of obsidian and chert. sherds a plenty as well still in same section. There seems to be a line that continues ~~CLAUDIO~~ ^{meale} finding ~~byajanki~~ in a corner of rocks in five west of five.

* 7B/016 * with list, doorway? strange?
20-55 cm at SW corner



7B/017 - clearing square 6 w 6 of tumble & debris
Doesn't look like there's much

finding some sherds



not to scale
finding a few sherds
Rocks on rocks
Some possible lines

Very difficult to tell. Removed a triangle rock to find another underneath this lot comes from both sides of what may be a line horizontal

20-40 cm at SW corner of 6 w 5

AP-00-25-25

21-Feb-2000

7B/018 - 0-10cm BGS measured at the Northwest corner
NE of square 7 west of square two of the axial
trench of structure 30.

Day - Hazy and cool, still wet from last night
Mood - good, but business like, two new workers
Pedro and Miguel.

Having the new boys clean off a section to
dig

Backdirt lot - 7B/019 - eastern pile of backdirt

7C/001 - 0-20cm BGS measured at NE corner of
P4M square 1 east of square 2 of axial trench

7C found a small handle piece.

7B/020 Square 6 west 5 - sherds & obsidian debitage
43@ NE tween rocks



7C/001 finding many sherds, coming down
on the floor also finding obsidian.

7B/021 0-20cm @ SW corner of square 8 west of square
6 of the axial trench

no sherds yet. found some sherds & chert

7C/002 0-20cm at NE corner of square 2 east of square
three of the axial trench of structure 30
no sherds yet found lithics

7B/022 - 0-20cm @ SW corner of 9 west of six

7C/002 found a piece of ceramic with an
interesting design  another piece reminiscent
of a piece found  in an earlier lot in
this area.

7C/002 finding obsidian blade
pieces also

7C/003 40cm found obsidian, chert, sherds

7B/022 - found an (pre?) handle to a jar or bowl
or something in that area which is near the
summit features of Structure 30

chasing Caesar corner. Many obsidian flakes and
nice thin obsidian blade piece was found

7C/003 is chasing amogon and athello
finding simple sherds

7B/022 0-10cm at NW corner


7C/004 - cleaning more of square 2 east 3

* * going deeper removing rocks and chasing
Imogen ~~found in this square near wall~~
Garret pay root bone

finding a good many nice sized sherds
in between Imogen & Street 30.

7B/023 - cleaning more of square 9 west of square 6

going deeper in this square, chasing the wall
that connects to Caesar -

found an object, candleholder?  it
seems to be broken off of a larger
object.

dit is a lighter brown, not as grey or black
in color

Caesar connects to BLUTUS, might be
another feature that is new

7C/004 cont.

definitely found part of a candleholder @
Interesting things in this square ??

AP 40-25-27

7B/023 10-30

7B/024

moving more dirt in this
area. BRUTUS is further
uncovered
Shards & Chert

300m

7C/004 40-60

* 7C/005

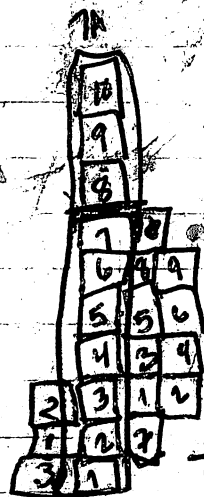
found a nice
rim piece with
a handle attached
found obsidian blade

23 Feb 69

4cm length

Gloomy, Waxy, misty day
Sick to stomach, but otherwise fine

Migel A keeps scratching
the shards & it goes
right through me
But I told them that
"they don't have to clean
because there are women
found a piece that
was 8cm blade, obsidian
idea from LAUREN



In this lot
there is a
sherd that
broke off a
sherd still
in the wall.
The other half
will be in
a future lot
marked w/ X

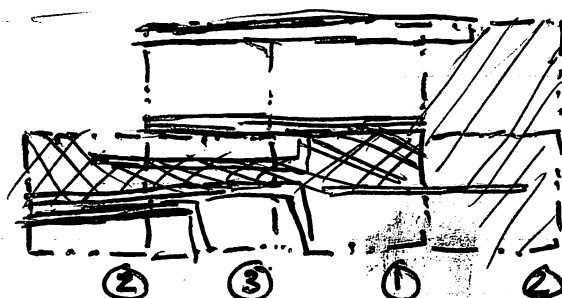
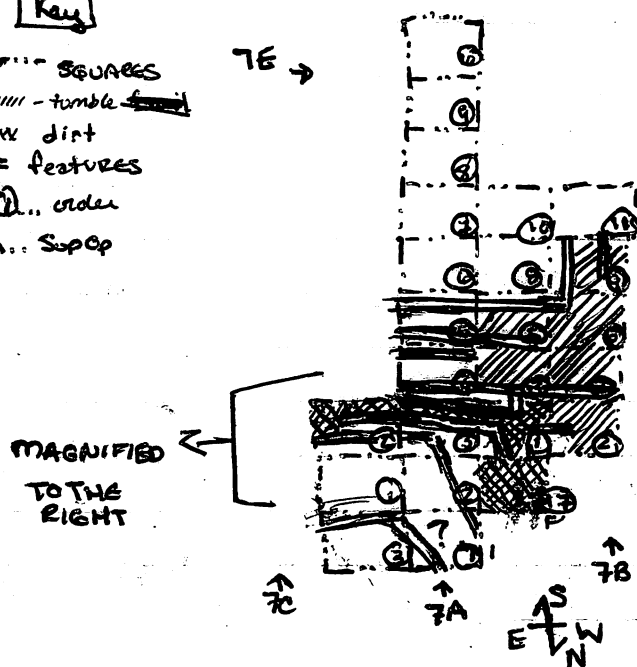
100m

DIAGRAM OF EXCAVATION

AP-00-25-28

Key

- SQUARES
- //// - tumble
- xxx dirt
- = features
- ⑦... order
- 7A... Sup Op



STRUCTURE 30

7C/006

finding lots of sherds
+ chert & obsidian
haven't hit rocks yet at
an equal level with
beatrice & othello
0-20cm @ NE

7B/025

nothing yet 0-5cm ^{count 4}
OCTAVIUS is what I'm
naming the emerging
feature in NW to
empty lot



7C/007 20-30cm

finding alot of sherds
in this square & not
many rocks, encountering
obsidian flakes
Bag of sherds 12x18
nice parrot head

7B/026 0-?? of NW corner

11 west 7 of axial trench
very few sherds thus
far
moved 4 rock around
a stump, they were
most likely out of place
Sherds & chert
0-10cm at SW

24-Feb-00

7C/008

0-30cm at SE of 4E3
findings sherds & chert
obsidian

There are three large cut
blocks taking up most
of my trench

7C/009

0-10cm at Sg 5 E 2
sherds & chert

7C/010

matching sherd to

004 0-50 in front of
mostly sherds & chert feature

Came down on a
feature D65D6MONA

7C/011

0-20 in square 6 east 3

Sherds chert

7C/012

Backdirt east sherds

7C/013

0-20 at NE of 7 east 2

found sherds, obsidian,
1 groundstone

AP-00-25-29

7B/027

0-20cm at NW of 12 w 6

Western end of square does not
have many rocks close to the
surface, sherds & chert

7B/028

0-20? at NW of 13 w 7

sherds found mostly
tumble

7B/029

cleaning & removing rocks
in 12 & 13

uncovering what maybe
a line

obsidian & chert

20-27 NW

~~AP-00~~ AP-00-25-30

Feb 28, 2000

Day promises to be warm and clear. I'm completely perplexed by this structure. Don't know what to go next

7C/014

clearing off sq 547
030? @ NE

7C/015

0-20 at 8 ends of 1
nice piece of obsidian
and some sherds
seem to be uncovering
a line of another ob core
was found mono was
found under a larger stone

7C/016

clearing 6, 7, up in front
of surrounding ZAGO
Deadmona may just
be full 30-33cm
In Squares 61 &

7C/017

Actually deadmona does exist.
found a matate & mono
piece
Día de las pierdas!
Some Bakayuki

7B/030

clearing off sq 12 &
area at NE
at 40? w of Oct
35cm H

7B/031

0-30cm sq 14 w sq 1
some sherds and
obsidian flakes
lots of sherds
and chert NW
corner

7B/032

10-30cm of square 7
west of 2 ~~stone~~
sherds being
found
~~at~~

May be finding a
mirror to substructure
2

found a reworked
blade core that still
has signs of blade use

7B/033

center found
obsidian

7C/017

groundstone

sherds

obsidian

chert

Bayareki

0-20 NE corner of 9 NE of 1

7C/018

0-10 in square 10 NE of 1
sherds & lithics

29-Feb-00

7C/019

filling a 15x25

bag with sherds

finding some

obsidian & chert

Also found a ceramic

stamper. Also a

handle with incised

marks near

obsidian pebble

10-30 at NW of 10 NE of 10 NE 1

7C/020

Found few sherds found a

5.2 cm Obsidian blade

found another rounded

piece of obsidian

square 11 0-30cm

7C/021

0-20 in square 12 at NE

finding chert and

obsidian & sherds

7C/022 clearing portion of

interior wall 62-83
-30

7B/033

AP-00-25-31

obsidian & sherds

30-40cm at NW of 7

★ 7B/034

Found an upside down

broken vessel Sq 7 & 14

just the base in a separate
bag. found face down on floor
of this lot. -stoped-

7B/035

0-10 square 15 west 2

finding sherds & obsidian

also finding bones

some chert as well

7B/034 cont

Bag 2 of 3

1-March-2000

obsidian & sherds

quite a few obsidian blade
pieces

Bag 3 of 3

more obsidian & sherds

Quite alot of sherds and obsidian

found a nice handle

40-60cm

Day - Sunny & Bright

Mood - Hungry, chill

Liking the dig
Happy with my features

7B/Ø36
0-20 in 16 W 1
finding sherds sherds
measured @ NW corner

7B/Ø37
same square further
down
sherds lithics

20-30 @ NW
7B/Ø38
0-20 in SQUARE 17 N of 1
sherds & sherd

7B/Ø39
0-20 in Sq 20 NW of 1

2-Mar-68

7B/Ø40
20-30 in Sq 17 N of 1
sherds, chert, obsidian
NW

7B/Ø44
0-20 in Sq 18 NW 1
sherds, obsidian
Chert

7B/Ø46
20-40 in Sq 18 NW 1
obsidian, sherds,
Chert, Quartz

7B/Ø47
center of structure

7C/Ø23 AP-ØØ-25-32

0-20 in 13 NE 1
finding chert
sherds and H&RO

** large sherd in 4 parts **

7C/Ø24
0-20 in 14 NE 1
sherds and lithics (chert)

7C/Ø25
sherd Chert obsidian
20-30 @ NW of 14 NE 1

The uncovered two features
H&RO, which closes
Substructure-2 and
ROBIN GOODFELLOW, who is a
retaining wall

7B/Ø41
0-20 in Sq 27 in NW
sherds Chert

7B/Ø42
0-20 in square 19 N of 1
Chert & sherds NW

7B/Ø43
20-40 in 19 N of 1 NW
found another stamp in
the internal section

7B/Ø45

* 0-30 in Square 20 NW of 1
Carbon sample at 30cm
20cm from N wall of 20
outside of Sub-2, near
corner



7B/047
center not done

7B/046
found a wide base to a pot.
that makes the second near
this structure


AP-00-25-33

Today I was distracted all day by the
social situation between staff and students

3-Mar-00

7B/048

HAVING THEM TAKE THE AREA BETWEEN BEATRICE and the pile of Humble
down another 10cm to find the base of the structure
finding obsidian and sherds.

7B/047 - cont in center, finding less sherds in the center
then before, revealing a platform of some sort.
features name is OBOLON, just found a ladle censer
handle  75cm NW corner

finding much obsidian in 7B/048

to the ~~NE~~ NW of BEATRICE there is a group of rocks that
may be a later addition to this structure
also finding bits of figurine in 7B/048

7B/047 - 40-~~20~~ 60cm measured at NW corner of 19
& found a large piece of bajareki near the
7B/049 edge of LAGO y OBOLON in the South
SQUARE 19 70-80cm at ~~NE~~ of 19 - NW

6-MARCH FIRST DAY BACK SINCE THE ROBBERY

~~7B/049~~ 7B/050 TO THE NORTH OF HERO - START AT 20 - at NW corner
SQU 21 OBOLON is part of a second substructure of 21

~~80~~ SUBSTRUCTURE - 2 second

7B/051 - Square 19 80 - at ~~NE~~ NW

TO THE ~~WEST~~ of HERO

lost two bags from Friday one is part of 7B/048

The other is bag one of 2 from 7B/049

AP-00-25-34

7B/050 00-70 at NW corner of 21

to the north of HERO in search of OBERON

Shards
Chert
Obsidian

7B/051 80-? at NW corner of 19

following OBERON AND BEATRICE to the base of structure. There seems to be some new line to the west of OBERON.

7C/026

0-20 square 15 to the east of square 4 of the axial trench of structure 30, following BENEDICT to the east

At the corner of HERO AND BEATRICE was found a large chunk of BAJAREKI, UPRIGHT WITH LINES IMPRINTED ON IT from the dicker. It was found at a 92 cm BGS measured on the NW corner of square 19 North of square one of the axial trench. The closest wall base to this area is OBERON, BEATRICE & ~~BEATRICE~~

HERO BASE is much higher, soil is tough to dig through

~~In square~~ IN center of substructure 2-1st we've found obsidian, chert, BAJAREKI, & shards of in lot 7B/051, carbon sample found close to OBERON, to the southern end of substructure 2-1st near the inside corner of where OBERON & OTHELLO meet SCRATCH THAT, TITIANA corners at the point where the carbon is from, Below TITIANA

8-MAR-00 Day: Sunny

Me: alright, embarrassed and sick

AP-00-25-35

7C/027

20-50 Bgs at 14 NE of 1
Sherds, going a bit
lower in this lot to
reveal more rocks
so I can see what's
going on

Trying to find OBGRON

Three substructures
in same area

Sub-2-first consists of
ATHELLO, BEATRICE, HERO & IAGO

Sub-2-second

OBGRON

Sub-2-third

ITIANA

~~7B/052~~ 7B/052

50-~~60~~ IN at NE of 1

~~finding some sherds~~

Sherds found

Still trying to find base of

HERO & OBGRON

Very few artifacts at 70cm

going down 10 more

Removed Rocks from this

square to get at soil underneath

Looks like it was filled by a

thin layer of rocks

~~Both areas~~

Both deposits were fairly
close to ROBIN GOOPFELLOW

~~7C/028~~

Clearing off more rocks in
15 E of 4, mostly from
SW corner area of square
10-30 cm on SW corner

7C/029

0-20 in square 16 east of 4
still following what may
be Benedict
finding obsidian & sherds

7C/030

0-20 in square 17 east of 5
following out Claudio & Leo

In case I forgot to note
it earlier, there were no
stones to the W of Beatrice
until 2 meters or before it corners
with HERO

Removing a few rocks from
in front of BENEDICT
near stump

at 75cm there were two
small deposits of carbon

7B/Ø52

50-80 cm in square 21

Shells, chert, & pigment stones

7B/Ø53

80-100 cm in square 21

Can't seem to find Okeon,
unless he's matched in at
the corner ??? TITIANA isn't
there either

Carbon - 88 cm at NW

30N - 55E

Below HERB & ROBIN

END LOT 7B

7C/Ø32

20-50 in square 13NE1

Shells & obsidian NE corner

Desdemona had three
large flat cut stones on the
top. Two of these were
removed to expose other
features. The center one remains
dimensions of surviving
stone 28 x 57 x 7 cm

7C/Ø34

50 cm - ? in square 14 NE of 1

There is a layer of fill,
flatly laid 30 cm below the
top of ROBIN GOODFELLOW measured
off stones to the eastern most side
of square 13

AP-ØØ-25-36

7C/Ø3Ø 0-10 NE square 17

I have carbon from on top
of the stone fill at the
corner of HERB & Beatrice,
second from TITIANA's corner
& third from below HERB

7C/Ø31

REMOVE ROCKS IN FRONT OF BENEDICT
Romeo seemed to have been built
up to BENEDICT, or else filled up
to that level

Ø 20 cm - 25 cm BGS NE of 17

20 cm horizontal 16

7C/Ø33

20 - in front of BENEDICT to
EXPOSE ROMEO

CARBON SAMPLE

74 cm BGS at SE of
15 east 4

Base of ROMEO??, DBS, &
EMOGEM?, in the wall of
ROMEO?

found a very nice
pink stone on the
surface of ROMEO?
and a upper part
of an obsidian blade.
We are cleaning
up the area in
front of ROMEO

7C/Ø34

M-P, SQUARE 14

50-60cm at NE corner

ROBIN GOODFELLOW

removed a layer of
flat fill in square 14

7C/Ø36

0-20cm in square 18
to the NE of square 1 of
axial trench

Shells, chert, obsidian

~~30~~

7C/Ø37

30-40cm in 18

Shells obsidian chert

7C/Ø38

0-10at square 19 NE of 1
NE corner

7C/Ø40

BACKDIRT EAST

2 piece of obsidian

10-MAR-ØØ HAPPY DAY,

7D/ØØ1

0-30 in square 1 east of 8

chert, obsidian

trying to find Hamlet

1 Henry II

7D/ØØ2

0-? in square 2 east of 9

7C/Ø33

AP-25-ØØ-37

A-N SQUARE 15

20-Ø 65cm in front of BENEDICT

ROMEO & BENEDICT

I think I've found two pieces of
obsidian that fit together to form
a larger blade, both pieces were
found from around the same
level

7C/Ø35 A+N

square 17, removal & cleaning of
locks, tumble removed at 6cm
found among rocks in 17, near

Cesar  may be a stamp ???

Removed more tumble at CLAUDIO

Claudio may be U-shaped

10-20cm - chert, obsidian, Shells

7C/Ø39

~~0-10~~ @ 20 E-6 to ob & chert

~~obsidian~~ ~~SHOPS~~ CONT TOMORROW

7C/Ø41 BACKDIRT SOUTHWEST

GROUNDSTONE MATATE

COURSE STUFF ARRIVED ☺

7C/Ø42

0-20 at 21 east of 6

just clearing off surface dirt

can see what may be the

continuation of Henry II and

TYBALT in 7D/ØØ2

7C/042

0-2 in 21 E of 6
found a matate leg
in this lot, miled in
with tumble near a
stone close to the wall
with the axial trench
0-10 cm at NE corner

7C/043

Clearing off tumble from
square 20 East of 5 including
part of 16 & 18
20-30 at NE corner

7C/044

square 22 east of 6
0-5 cm

7C/045

0-? in square 23 east
of square 7 of axial
trench - Sheds & chert

21-MAR-08

7E/007

0-? in square 1 west of
square 8 of the axial trench
of structure 30
Sheds & chert

7D/004

20-40 cm at NE of 3 east 10
& 2 east 9
Sheds, chert, obsidian
in search of base of TYBALT
area above TYBALT & south of
this feature

7D/002

0-? in square 2 east of 9 of axial
trench, following near walls
of TYBALT & HENRY II

found an animal figurine head,
one side decorated only, nice
~~clear~~ form, clear (jaguar?)

10-12 cm South of HENRY on TYBALT
0-30 at NE corner 2

7D/003

Square 3 east 10

0-? cm in search of TYBALT

0-20 cm at NE OBSIDIAN Sheds
very little

OBELON dips into the hole where TITIANA
gaped.

7D/004 - cont later

Clearing of rocks & dirt in squares 2 &
3 east of 9 & 10 of the axial trench of
structure 30 in search of TYBALT
Sheds 20-40 cm NE of 3E 10

THINGS TO DO:

* FIND TYBALT & FIND HIS EASTERN
CORNER

* MOVE A SQUARE MORE EAST TO
FIND CORNER OF FEATURES IN STRUCT 30
& SUB-STRUCT 2

7C/045 @ 5 cm

seems to be revealing a
line for an unnamed feature
HAMLET is disappearing
new feature is LYSANDER

AP-00-25-39

7D/005

40-? 3E10

MATATE LGS, found
60cm W of Eastern WALL
under a limestone (flat)
South of TYBALT
@ 50cm dirt shield
layer. 40-60cm

7E/001

0-? 1W8

20cm at NE
Sheds
Behauki
obsidian
chest

7C/045

0-? 23E7 20cm

found a beat up obsidian core
having then go further
removed locks that are part of
an incomplete linelet. in an
attempt to clarify a line

7D/006

0-? at 4 east 10

0-20cm at square 24 east of
square 5 of the axial trench
Sheds & chest & obsidian

0-20cm obsidian
Sheds
at NE corner

7E/002

square 10 west 7

10cm W - ?? 20cm

unsure of starting depth
measured off 9 east 6 at 10cm
to start at

7D/007

0-20 at 5 east 9
NE corner

7C/047

0-20cm at 23 east of 6
SE corner measurement

7C/048

cleaning and clarifying
squares 25 & 22 east of 6
20cm ??

22-MAR-00

Goals:

- Find edge and corner of structure 30
- Find TYBALT and TYBALT'S corner
- FIND LYSANDER

7C/049 - 20-30cm? in square 24 east of square 5 in search of
edge of structure

7E/003

continuing square 10 west of 7, clearing and clarifying LYSANDER
room

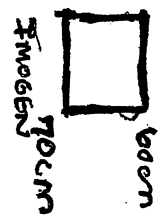
7D/008 squares 2 and 5, clearing rocks to expose TYBALT
start at 20cm

198 185 180 175 170 165 160 155 150 145 140 135 130 125 120 115 110 105 100 95 90 85 80 75 70 65 60 55 50 45 40 35 30 25 20 15 10 5

AP-00-25-40

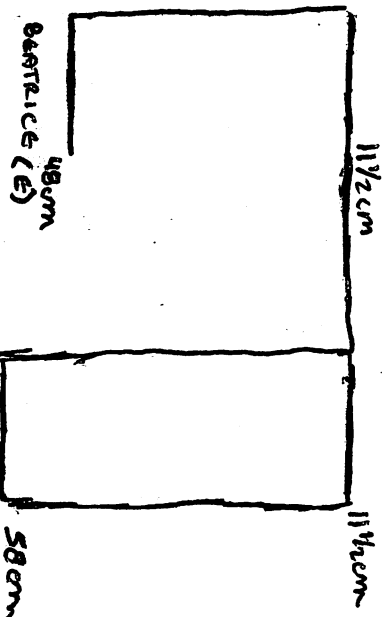
Bottom

TITANIUM



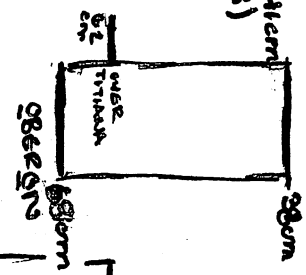
50cm

60cm
BARRIER (W)

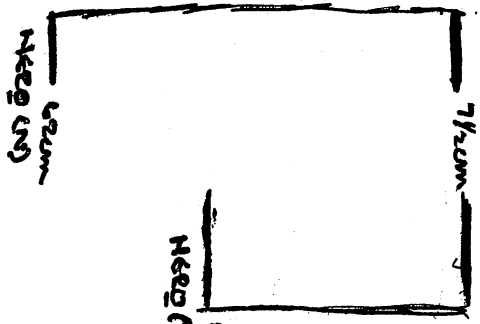


48cm
BARRIER (E)

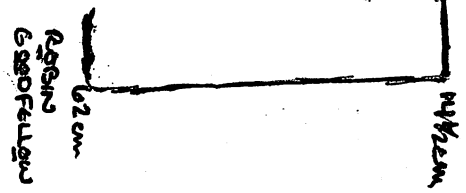
62cm



68cm
BARRIER



42cm
BARRIER (W)



62cm
BARRIER (W)

Top

working on 7E/003, 7D/008, 7C/049

AP-00-25-41

looks like tons of fill where the southern face of ~~the~~ western LYSANDER should be. Confusing. I'm going to pull out some of the fill to clarify. LYSANDER seems to be disappearing. Found matate piece in 7E/003 near a rock in upright position. Clarifying summit architecture. Possibly found the eastern wall of structure 3A. Feature name is MACBETH. He seems to be appearing in both 7D/008 and 7C/049. Off the eastern side of MACBETH, in lot 7/049, square 24 (possibly the easternmost edge of square 20) found a rounded, polished green stone. What it is a part of, can't tell. found Bajareki ~~on~~ under the first planted rock in TYBALT ~~after~~ east of axial and another chunk at or near the "base" (as best as I can tell. Bajareki near planted rock is a dark red.

7E/003 - 20cm - 50cm BGS measured at NE post of square 9 west 6, for square 10 west 7.

7E/004 - 0cm at start of square 9 west 6, clearing summit

7D/008 - 0cm at NE corner of 5 east 9 of axial trench.

* 7D/009 - clearing out tumble that could be TYBALT, moved tilted out of place stones in the hope of finding better preservation below it

Carbon Sample - just barely enough, at 80cm BGS (measured off NE corner of square 2, directly above a red painted and etched sherd, may be from enclosed context as there was tumble from TYBALT on it

7C/049 - 20cm - 40cm in square 24 (next to MACBETH)

7E/004 - found a tube, foot with hole among tumbler

7D/009 - decorated & painted pottery, glyph? found at base of TYBALT, next to tumble still in axial trench, directly below the part of TYBALT mat tilted & removed

7D/009 - 1st midden under sherds. Better ones at that

open 7E/004, 70/009, 7C/050

7C/050 starts at 20cm, east of MACBETH chasing him back

7E/004 is clearing off that summit feature, will be measured off square 23 east 4 at 20cm

70/009 is a midden under the rocks, 90cm at NE corner

7C/051 0-40cm at square 06 east of square 4 of the axial trench

70/006 - square 6 east 8 0-20cm

7C/050 - end at 60cm

7C/051 - 10cm

23-MAR-00 7C/052 - 10cm - 20cm in 26 east 4 - getting sherds & things

70/010 - continued from 22-MARCH

7E/005 - square 11 east square 7, clearing tumble

30cm - 40cm on SE corner, only tumble on southern side revealed a floor

7E/006 - 0-10cm at square 2 west of square 8 of the axial trench

7C/053 - 0-10cm at square 27 NE of square 1 of the axial trench of structure 30

70/010 - 0-30cm at NE corner of 6 east 8

70/011 - starts at 30cm at this square chasing feature that may or not be MACBETH

found feature of JULIET

7E/006 - 10cm stopped empty lot

7E/007 - start 0-10cm of 3 west 8, exact

7C/053 - stopped at 5cm at NE corner, obsidian sherds

7C/054 - 0-10cm at 28 northeast 1 of axial

7E/008 - square 21 3 west 8, clearing rocks

found a pretty little figurine head in ~~the~~ 70/012 stopped at 50cm

70/012 - 50cm - to base in square 6 east 8, 60-65cm

lot 52 has tons of chert and a bit of obsidian

70/013 - 45cm → searching for depth of structure

7C/002 - finished at 20cm at NE

The eastern wall is Ford MONTAGUES

7E/008, 7D/013, 7C/054, 7C/055

AP-001-25-43

7C/055 - tumble in square 24, 50cm

Trying to dig the area to west of summit. Construction is difficult

7D/013 - stopped at 80cm, depth of LORD MONTAGUE

7C/056 - 0-20cm at 29 east 7

7C/057 - tumble in ~~25~~ 25 east 6, AG-??

* BURIED IN BACK DIRT *

7C/054 - 30cm

7E/008 - 30cm } stop 10-30

7C/056 - 10cm

Operation 7

24 - March - 2000 Tired, cranky, feeling dumb as shit whatever.

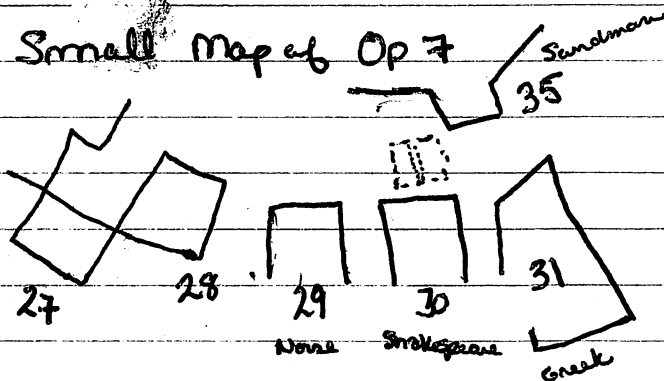
- Goals -

- Finish off last two squares of substructure -

- Complete the eastern connection.

- Clear two squares on southwestern -

Small Map of Op 7



At this point, Structure 30 is 80% cleared, substructure-2 first is 100%, encountered substructure-2-second & 2-third, also the connection with Str 35 off of ROBIN GOODFELLOW and the western

wall (ZEUS) of structure 31 has been partially excavated.

7C/057 - 20-?, tumble to the west of ZEUS in square 25 east 6

7E/009 - 30cm-? in square 1 & 2 ~~east~~ west square 8

7C/058 - 0-20cm of square 30 NE of square 1

* 7C/057 - at 50cm BGS, 40cm off of ZEUS, in southeast quadrant of square 26, piece of harden worked bone

7C/057, 7C/058, 7E/009

AP. 00-25-44

Animal Bone in 7E/009

25cm from Southern wall of square 2 west 8
74cm from Western wall of square 2 west 8
from 5cm to 18 cm away from ODIN of
structure 29, ~~2 bones~~ ~~there~~ one to 2 bones, one
with Ball joint

Lying on stone surface, tumble on top of it
possible deposition underneath

30cm BGS measured off Southern wall of excavation
7E/009 - 50cm

* 7C/057 - @ 50cm

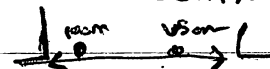
~~7C/057~~ 7E/010 12 west 6 - tumble layer near OCT.

40cm BGS off western wall

65cm - bowl, in pieces, real tiny } starting 10cm
away from

10cm - ocularia complete

in line with each other



OCTAVIUS in Square 9

* 7E/009 & 7E/010 important, possible stuff from
Occupation zone

7C/058 - 20cm stopped

7C/059 - 10cm - ? in square 29 20cm

7C/060 - 0-20cm in square 31 east square 1

7E/011 - 40cm at Incised of OCTAVIUS, found
bajareki deposits in dirt fill layer

Take measurements of finished lots

27-MAR-00

7C/061 - 20cm - ? in 29

7C/062 - 20cm - ? in 31

7E/012 - 0-20cm in square 3 west of square 9

Removed a layer of rocks from Oct 7C/062
to try to find out what is happening with
the lines in this area of the substructure

AP-00-25-45

7E/061, 7E/062, 7E/012

groundstone found in both bto 7E/061 and lot 7E/062 amidst tumble

7E/012 - 0-20cm at NW corner of square 3 west square 9 area above TYBALT, clearing TYBALT west

7E/013 - removed layer of rock in square 2 west 8 in front of OCTAVIUS and friends, gap in rock layer at NE corner of this lot

7E/062 - stopped at 30cm, nothing is clear, just more confusing

7E/063 - clearing in square 7 20cm - ?? I think

In 7E/061 - 40cm BGS a rib bone

13cm away (eastern direction) from LORD MONTAGUE

16cm to south of MACBETH'S corner

7E/013 - more tumble underneath at 60cm

exposed wall below OCTAVIUS. This will be LORD CAPULET must have filled the earlier construction in when they connected the two ^{structures} together

7E/014 - 0-20 at 4 west 9 - stopped at 20

7E/061 - at 40cm at NE corner

• 7E/063 - bone found at 35cm BGS and 30cm west of wall of excavation to the east - 40cm

7E/064 - 40cm - ?? in, possibly another feature to connect the ears of 29 & 30, 80cm

7E/063 - groundstone

7E/015 - 0-20 in square 3 west square 10 - at 20cm

• 7D/014 ~~0-20~~ 80-?? in near along LORD MONTAGUE after MALEVOLIO 0cm at step

• 7E/016 cont

20-? in square 3 west 9 of axial trench

• 7E/065 - summit area in square 29-23 & 27 continue

VIOLA is the line to east of TAGO. JULIET only exists to east of DESDEMONA. Stop before VIOLA begins

28-MAR-00

SUPOP 70 is closed

AP-00-25-46

7E/016, 7C/015

7C/015 - square 6 east square 3 of axial trench 38
start at 100m

VICIA seems to continue further south
need to remove more tumble

* 7E/016 - found a weird figurine shape



found carbon at SE corner of
square excavation, 80cm below top of wall
amidst tumble closest to feature TYBA17

* 7E/017 80cm - ?? in square 3 west square 9 of axial trench
found some bone, lots of shreds - stopped at 100m

7D/015 - BACKDIRT OVER STRUCTURE 29

Somehow we missed a huge ass piece of groundstone
Back dirt is probably from Southeast section of
excavation

Burial in Square 3 east 9 Buried it for tomorrow
some bone in this lot, the rest of burial will be its
own lot.

AP-008-25-47

* 7E/018

* 20-100 in square 4 west square 9 of the axial trench of structure 31

also ref 017
March 29, 2000 - Today we drop another set of axials on structures 29 and 31. I've been missing the two in my notes. Back dirt is over structure 31
31 to east 29 to west

First axial will be dropped on structure 31

* 7E/018 - 20-70 at NE corner of square 4 west 9 of axial trench

Worked bone in lat 7E/019 between 70 & 80 cm

At 80 cm BGS, 10 cm South of ~~structure~~ TYBALT

we have some bone deposits, but they form no rhyme or reason. Mostly small ribs and pieces of skull. Do not have a firm. Stop at 90 cm in this lat

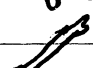
Structure 31 7F/001 Axial trench

The axial trench of structure 31 is 11 meters in length, it is oriented at 164° SE

7F/001 - 0-10 in square 1 of the axial trench of structure 31

7E/020 - Bone layer at 90 cm Cont, manana

Bone, ~~long bone~~ up against the wall of structure 31

Up against the TYBALT, 94 cm BGS  shape of bone

More bone in square 3 west 9
leg bones possibly human

DOVE
7F/001 - 0-20 in one at ~~SE~~ SW ST 31 Shards obsid
7F/002 - 20-40 in one at ~~SE~~ SW ST 31
7F/003 0-7 in east square 11 of 31 20

AP-20-25-48

* 7F/020 - on hold till I get square 5 west 10 clear

* 7F/021 - square 5 west 10 20cm - ?? 70cm

* 7F/022 - square 11 ^{west 7} 10cm - ?? in area to east of octavious
and west of Brutus 40cm

7F/024 - 0-20 in square 10 of axial of str 31

found very little except tumble, a few sherd + chert core

7F/025 - 40cm-10 at square 1 of axial of 31

* 7F/026 - 0-20 in square 10 of axial of 31 NE RA is feature
There are sherds imbedded under the wall of BRUTUS

Notson Burial: 7F/020 *

finding sherds intermixed with bones.

MARIO is going to clean it off

found some jute shells within 10cm (visually determined
measurement) of the long bones. More jute found, ~~at~~

measurement 24cm & 13cm away from Burial

southern side, in line with long bone orientation

found teeth & a piece of obsidian where the "head" is.

~~There~~ more jute under the leg bones 10cm Below 10cm
under

74cm Horizontal 10cm BGS at NW corner of 5 west 10

34cm from TYBALT

Blade
two
mud

* 7F/007 - 20-50 in square 11 of the axial of structure 31

7F/008 - 0-20 in square 2 of axial of 31

7F/009 - 20-10 in square 10 of str 31

found piece of groundstone on western side of square

* 7F/010 - 0-10 in square 5

7F/011 - 20-30 in 2

7F/012 - 0-30 in 9 of 31

7F/013 - 0-10 in 11

7F/014

AP-00-25-49

31-MAR-00 Day is hot and sweaty

7F/012 - 0-30cm in NE corner of square 9 of 31 sherds

+ 7F/013 - 0-10cm in NE corner of square 4 of 31 sherds

7E/023 - 30-100cm at NW corner of square 4 west 9

80cm Horizontal from TYBALT's surface area ^{shards} obsidian

7G/001 - 0-20cm square 1 of 29

7F/014 - 30-70cm BGS at NE corner of square 9 of 31 sherds

7F/015 - 30-70 square 2 of axial of 31

7F/016 - 70cm - 700 BGS in 9 of 31

~~7F/017 - 0-20cm~~

7G/001 - 0-20cm BGS measured at the NE corner of square 1 of the axial trench of structure 29

7E/024 - 0-40cm BGS measured at NW in 6 west 9 of 30 sherds obsidian

* 7E/025 - MATAT piece 20cm South of TYBALT
EXPOSED TIW and started at 40cm

Bone in square 8 in axial of 31 7F/017 - 0-20

20cm BGS, off south east, 40cm N of South square line

Probably animal, shallow

found bone pulverized at 70cm BGS in 7E/025 & teeth

Maps of axial trenches ^{carbon}

| | | |
|---|----|--------|
| * | 1 | 7F |
| * | 2 | Str 31 |
| * | 3 | |
| * | 4 | |
| * | 5 | |
| * | 6 | |
| * | 7 | |
| * | 8 | |
| * | 9 | |
| * | 9 | |
| * | 10 | |
| * | 11 | |

| | |
|---|----|
| * | 1 |
| * | 2 |
| * | 3 |
| * | 4 |
| * | 5 |
| * | 6 |
| * | 7 |
| * | 8 |
| * | 9 |
| * | 10 |

20 S of TYBALT } Bone & Carbon
40 E of TIW }

7E/026 - 60cm - 90 sherds

7G/002 - 20-40 in 2 sherds lithics

7G/003 - 0-20cm square 2 of 29

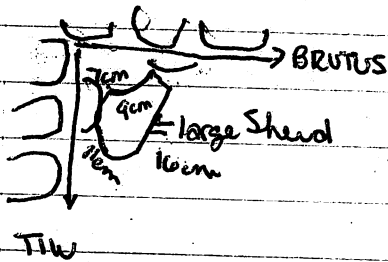
7F/017 - 0-? in 3 of 31

7F/018 - 0-30 in 5 of 31 sherds Bone
Obsidian

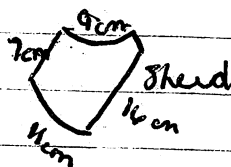
7E/026

AP-00 - 25-50

Bone and pot base encountered in lot 7E/026
85cm BGS at NW corner the bones were in the corner
made by TIW meeting up against BRUTUS
The bowl was wedged in this corner face up There
is a layer of rocks underneath the pot



Has been moved from original position
lying on a layer of tumble, Buried by
tumble



Bone in corner of TIW

BRUTUS 70cm x

90cm BGS in Pot

Bone
Shards
groundstone

3-~~more~~ - 00
APR

Stopped at 90cm

7F/017 - 0-20cm BGS at NE of square 3 of axial Shards obs'd

7F/019 - 0-30cm in square 7 of 31's axial Shards obs' chert ground

7F/004 - 20cm 30cm in NE of square 2 of axial of 29 Shards ^{Bone} ground

* 7E/027 - 100cm - ? in square 4 west 9

* 7F/005 - 40cm 60cm in 2 of axial 29

Axial trench of structure 29 is oriented 170° SE

Found a skeleton in 7E/027, is being cleaned up for
drawing and pictures 120cm

7F/020 - cleaning around buried in structure 31 before
picture 30cm BGS

7F/021 - 20cm - ? in square 3 of axial of 31

Reaching out front wall

Body found in 7F/005, area of 55cm at
60cm BGS in between shallow line of cut
stone wall is FRIDDA

Features of 31

Features of 29

Features of 35

S
N

Demeter
Hermes

Poseidon

Hades

Mercur

Zeus

Fi?

okir

Friddle

Myrddin

AP-ØØ-25-51

76/106-60cm - 70cm square 2 of 29-55cm Horizontal between two squares at NE

Skull in 7E/027 was positioned on top of rocks (possible
tumble) head was resting on rock. Back side
supported by rocks. Had shell with burial as in
first burial in lot 7E/020

7E/028 - Bone mine measurements of of top of TYBALTS

Found more bones that are visible in cut of excavation wall (profile). There is a layer of rocks on top of the stones and a layer of dirt over another layer of stones. Since last two burials were below thickly compacted tumble and surrounded or on top of rock layer. Want to take a picture of the stratigraphy of rock soil and bone. Also finding bone pieces on rock layer, some resemble those found near the broken pot sherd base. Pot sherd base was found in corner of walls above this rock layer. It was found face up.

In corner of T4 and T4B15 more large shreds were found face up buried ~~deep~~ with the large layer of fill on turntable

also, one is face up.

Post sheels: at 75cm Bas

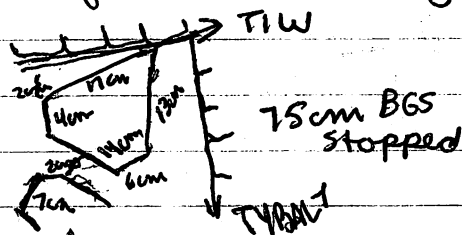
70 cm } second stone layer
91 cm }

two points of oral touching

100cm - Bones

Two

110cm } stone layer
140cm }



Burrows and undergrowth

shards removed

The bones that were protruding from the wall are very fragmentary, as they cleaving around Pencil to corner of the old corner, and

AP-00-75-52

7E/029 - 75cm - ?? in square 5 west 9

7E/028 - Shards ~~Obsidian~~ Bone

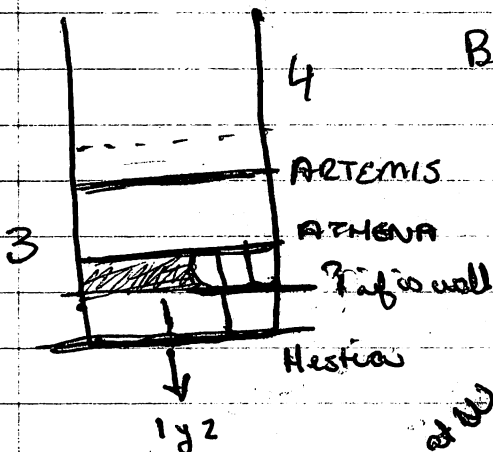
lots of sherd, bone fragments among the rock "tumble" also found a piece of quartz. Mand P asked me about it.

7G/006 - 0-20 (20) 1/4 in 29. The dumb me segment of the day. Need to change lots more frequently. in first 20cm found relatively few sherds. Told them to go 5cm to 10cm deeper. Completely filled the bag. At least 2x as many sherds from that layer stopped at 23. Had to separate into 2 bags [Sherds quartz chert obsidian] Carbon in 7E/029 near dead guy but not nearly enough

7G/007 - 23cm - 30 in reach of rest of wall, in square 3 of 29

~~7E/028~~ 7F/021 - 20-40cm BGS, at least 3 features in this meter

7F/022 - 70cm - 80 in square 2 of 31, 60cm from South at NE or 60cm from Hestia.



Body in 7E/029

found quartz in rib area & obsidian near mouth. Head is facing South as in other. Have spine in & part of humerus. Possible child. Hard to remove cause of rocks

It came out extremely fragmented. Body at 110cm BGS, stopped at 130cm ^{only in area of body}

7F/023 - 20-? in square 4 of the axial for ~~square~~ 31

7G/008 - 30cm to 35cm in SE of square 3 of 29

7G/009 - 0-20 cm measured in NE of square 4 of 29

7E/000 - 30-? in SW corner of square 3 west 9

finishing the rest of square not part of Burial

burial non-burial

Most of this layer is composed of large rocks

5-APR-00

AP-00-25-53

7E/030 - see page 52

7F/023 - 20-40 in square 4 of axial trench of structure 31 NW

Shards
Chert

7G/010 - 10-20 in square 4 of axial in 29 SE

Shards
obsid

7G/011 - 0-30 in square 10 of the axial trench of structure 29

7E/030 - found shard 10cm from TIW, 50cm B TIW's surface
20cm BGS, Reddish brown in soil at 130cm BGS ±

Shards
Chert

7G/012 - 30-40 in square 4 of axial trench of structure
29 - in SE corner

7E/030 - finding animal Bones at 70cm B the top surface
of TIW, stop at 100 at SW corner of 30 at TIW

Beharke 7G/033 - 30-60 in square 10 of 29, clearing tumble. Below rock
Time started at 50cm

Carbon sample from 7E/030 at 100cm BGS at west
end 10cm Below TIW also Brought Northern area to 150

Interesting that am finding Shards deep under walls

Shards

7G/014 - 40-50 BGS at SE in 4 of 29

Pulling very little obsidian from front of 29

7G/015 - 0-40 in square 9 of axial of 29.

Shape of GS at TIW

empty
lat

7G/016 - 0-20cm in

square 7 of axial 29

Shards
obsidian

7F/024 - 20-40 in

square 5 of axial 31 - SE

Huge ass tree trunk in square 6 of axial 29

7G/017 - 20-80 in 10 of axial 29

Shards
obsid

7G/018 - 0-20 in 5 of axial of 29 SE

7F/025 - 40 - ? in square 5 of 31 - digging in clay also Beharke deposit
Brought earth?

7G/019 - 60-80 in 10 of axial trench 29

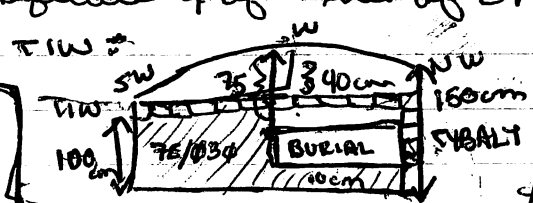
7G/020 - 20-40cm in SE of square 5 of axial of 29

8-APR

7G/021 - clearing square 5 of axial 29 more

7G/022 - 40 - ? in square 9 of axial

Beharke deposits under a layer of
"tumble"



AP-0025-54
 About 46 cm away from wall of excavation in lot 7F/025 - two piece of shell
 ~61 cm BGS at Western corner of 5, close to boundary with square 4 & 5

7F/025 - removed a layer of rocks that may be were
 a line - confusing because Hebe may be
 1 [] built on rubble stopped at 60 cm at SE
 Shards, Chert, Obsid - 1 Shell

76/022 - peeling back a layer in the south in an attempt
 to find out where the wall changes
 Shards
 40

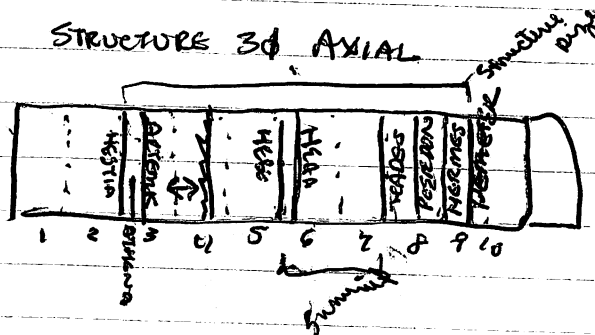
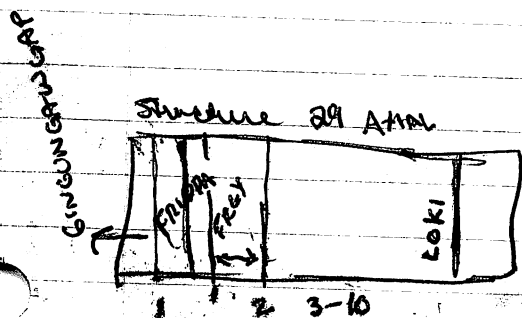
Stopped at 80 cm in SE of 9
 76/021 - stopped at 50 cm in SE - Shards, chert, obsidian
 Shards
 Chert Obs

* 76/023 - 40 cm - 60 cm in square 4 of 29 SW 30 cm x 80 cm in
 Sweeper of square, Pulling out plenty of shards
 from this area, edge of a stair

Shards
 Chert
 Obsid
 Bone
 found Motate imbedded in rock at layer of 40 cm
 Also found piece of Polychrome, Bone as well, skull

76/024 - 80 cm - ? in square 10 of axial of ~~29~~ 29

7F/026 - square 31 (70 x 100 at start) 90 cm stop at
 Obsid, M.C.Z, Shards at SE side SE corner
 closest to NE of square
 10 of axial 31



April 18, 2000

AP-00-25-55

Shards
ceramic
chest
FH/027-90-110 in square 9 of 31 at SE off Demeter

Shard FH/001-0-20cm in NW corner of square 1 west square 2 of axial of structure 31, shards only

Shards
chest
FH/002-20cm-40cm in NW corner of square 1 west square 2 of axial of structure 31

Shard FG/024-80cm-110 in square 10 of axial of structure 29 NE

Shards
obsidian
FG/025-0-20 in square 6 of the axial of structure 29
obsidian, first seeming layer in SE corner

Shard FG/026-0-20 in square 8 of axial of 29

Shards
chest
ceramic
FH/003-40-70 in square 1 west of 2 of axial 31

Shards
chest
FH/004-0-20 in square 2 west of 5 of axial 31

Shards
obsidian
FH/028-110cm-130 square 9 of 31 SE off Demeter

Shards
FH/005-0-20cm in square 3 west of 3 of the axial of 31 NW

Shards
FH/006-20cm-25 in square 2 west of 5 of the axial of 31 NW -

Shards
FH/007-0-50 in square 4 west of 6 of the axial of 31 NW

Shards
obsid, chest
green
FH/008-20-50 in square 3 west 3 of axial 31 @ 40cm (J) found piece of greenstone

Shards
chest
ceramic
FG/027-20-40 in square 8 of 29

FG/028-20-3 in square 6 of 29

Greenstone piece (J-unprovable) found at 40cm BGS closest to the western excavation wall, above ~~the~~ MESTIA & ATHENA, and North of Artemis (lat FH/008 measured at NW) 50cm away from ARTEMIS measured at this pt, lat was at 30cm

FG/029-40-? in 8 of 29

Shards FH/009-50 in square 3 west of 3-80cm in NW in 31

FH/010-~~in square 3 west of 5 of 31~~

70-80cm in square 1 west of square 2 of axial 31

11-APR-ØØ

AP-ØØ-25-50

76/Ø28 - 20cm - ? in square 6 of the axial of structure 29
clearing off what seemed to me to be a flat fill surface
removed some of it in search of a line. Nilson asked me
"¿ Para que?" while clearing. Just doing as Ed says, hopefully
something will show itself

Sheds
Obsidian

* 76/Ø29 - 40cm - 60 in square 8 of the axial of structure 29
trying to clear off near wall of summit. Hoping to define
it better in NE

Sheds
Obsidian

74/Ø1Ø - 70cm - 80cm in square 1 west of square 2 of the axial
trench of structure 31. In search of base of HESTIA

76/Ø29 - a lower line seems to be developing, but the

* higher wall looks like shit, removed all but top layer

Chest
Sheds

* 74/Ø11 - Ø-20cm in square 5 to the west of square 3 of the axial of str. 31

* 74/Ø12 - 20cm - 40cm in square 5 west 3 of axial

removing rocks slowly to make sure I don't destroy how these
buildings connect

the 13-APR-ØØ

76/Ø3Ø - 10-Ø in square 8 of axial of structure 29. At NE
area that looks somewhat like a wall, but not quite
Ed wants me to take it down, 50cm Horizontal

76/Ø28 - Bringing it all down

* 76/Ø31 - in square 6 & 7 the thin layer of soil at 50cm
above the stone floor surface of RAGNOROCK of 29

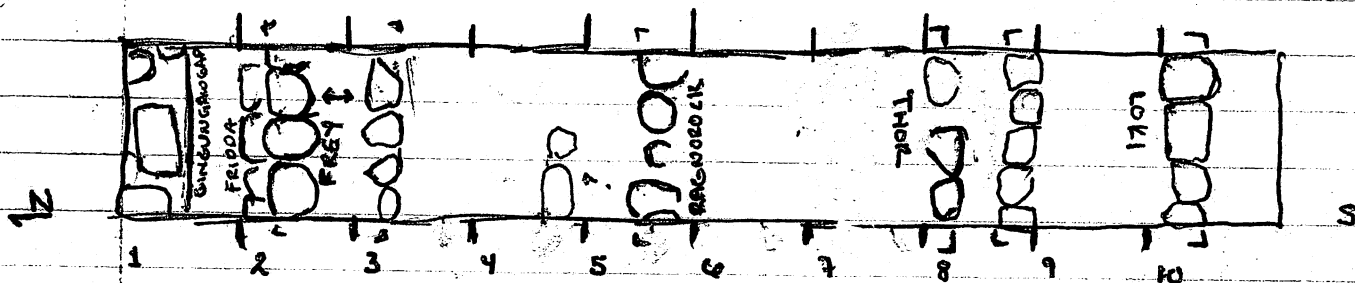
76/Ø3Ø - found a piece of carbon at 70cm BGS at NW
corner of this section. 30cm Below the floor
surface, in the southern portion of section 50cm

74/Ø12 - cont. slowly removing rocks to uncover structure
found an interesting chest flake, had a smoothed
side like an atche,

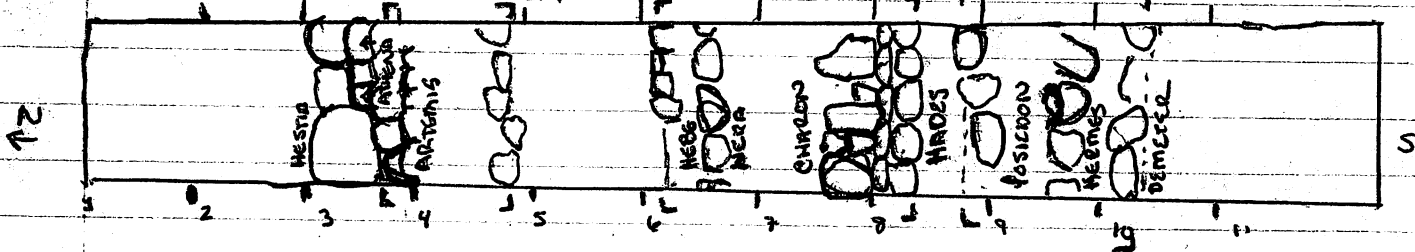
74/Ø13 - 0-70cm in square 6 to the west of square 5 of the
axial of structure 31

Structure 29 AXIAL TRENCH

AP-00-25-57



Structure 31 AXIAL TRENCH



Shards
Chert
Obsidian

7H/012 - finding some pretty nice looking phreos, nice painted ones
Also, finding a fair amount of chert and obsidian. @ 40cm NW

Shards
Chert
Obsidian

7H/013 - removing pebbles to permit the excavation to 20cm to continue, couldn't finish stopped at 10cm

7H/014 - 40cm-60 in square 5 west square 3 of the axial of 31

7H/013 - found quite a bit of small particles of obsidian. Having interesting idea about square 2 and 3 being a surface should make these priority lots

7H/015 - 0-10cm at NW of square 7 west square 5 of axial 31

Mostly a quick dig to connect these two structures

7H/014 - metal piece found with leg wear visible. Found on end

next to viola on eastern side, looked like tumble but who knows

EMPTY 7H/015 - at 10cm EMPTY LOT, basically uncovered ZEB

AP-00-25-58

14-APR-00

7H/014 - continue from yesterday

Shards - 7H/016 - 0-20cm in NW of square 8 west square 6 of axial 31
Chest
~~Shards~~ on summit behind HEBE

Shards 7H/001 - 0-20 in square 1 east square 1 of axial 29 NE

Shards 7H/002 - 0-20 in square 2 east square 2 of axial 29 NE

Shards 7H/003 - 0-20cm square 3 east square 3 of axial 29 NE

Shards 7H/014 - finding a lot of interesting shards, the police officer carried
Chest Obsidian
groundstone my name into a shed as a flaking attempt,

Shards 7H/004 - 0-40 in square 1 east of square 1 of axial 29 NE

Shards 7H/005 - 20-30 in square 3 east of square 3 of axial 29 NE

7H/014 - another piece of MATATE found along side VIOLA

removing smallish pebbles from lot 7H/016, Chasing the summit
Hugs from Jenny found a blade in the back dirt, they say its from
lot 7H/003, Ed says to believe them. It's a chest point. It's beautiful



tip is worn off, a recent pick break was made
in its side

~~found~~ 7H/014 - followed ATHENA to edge clearing off connection

Shards 7H/014 - stopped this lot at 60cm BGS at NW

Shards 7H/015 - 60cm-70cm in square 5 west 3 of structure 31

Shards 7H/016 - 0-20cm in square 9 to the west of square 6 in str 31

Shards 7H/017 - 30cm-50cm in square 3 west 3 of axial trench 29

Shards 7H/018 - this far is mostly topsoil around initial feature
Chest Obsidian of structure 29. It's very shallow

Shards 7H/019 - 40cm-50cm in square 1 west square 1 of 29 NE

In 7H/018 have found two pieces of groundstone

HEBE seems to be coming to a corner. Maybe a slight
western terrace groundstone ~~at~~ near summit

In structure 29 features are still shallow.

In about 40cm BGS in 7H/016 a bone of some sort was
encountered. SAROS is clearing it off. Whether a possible
feature of the southern side of FRIPDA.

7H/017 - finding some interesting upper portions of obsidian blade

7H/018 - continued 21

In 7H/024 found bone at level of 20cm 67cm North of
ATHENA

AP-00-25-58

14-APR-00

7H/014 - continue from yesterday

Shards - 7H/016 - ϕ -20cm in NW of square 8 west square 6 of axial 31
Chest
~~7H/016~~ on summit behind NEBE

Shards 7I/001 - ϕ -20 in square 1 east square 1 of axial 29 NE

Shards 7I/002 - ϕ -20 in square 2 east square 2 of axial 29 NE

obsidian
Shards 7I/003 - ϕ -20cm square 3 east square 3 of axial 21 NE

Shards
Chest obs
groundstone
7H/014 - finding alot of interesting shards, the police officers carried my name into a shard as a flaking attempt,

Shards
Chest obs
Shards 7I/004 - 20-40 in square 1 east of square 1 of axial 29 NE

obsidian
Boysenki
7I/005 - 20-30 in square 3 east of square 3 of axial 29 NE

7H/014 - another piece of MATATE found along side VIOLA

removing smallish pebbles from lot 7H/016, Chasing the summit
Hugs from Jenny found a blade in the backdirt, they say its from
lot 7I/003, Ed says to believe them. It's a chert point. It's beautiful



tip is worn off, a recent pick break was made
in its side

~~7H/014~~ 7H/014 - followed ATHENA to edge clearing off connection

Stopped this lot at 60cm BES at NW

Shards
Chest obs
7H/017 - 60cm-70cm in square 5 west 3 of structure 31

groundstone
Shards obs
7H/018 - ϕ -20cm in square 9 to the west of square 6 in str 31

Shards -
obsidian
Bone
7I/006 - 30cm 50cm in square 3 west 3 of axial trench 29

7I this far is mostly topsoil around initial feature
of structure 29. It's very shallow

7I/007 - 40cm 50 - in square 1 west square 1 of 29 NE

In 7H/018 have found two pieces of groundstone

HEBE seems to be coming to a corner. Maybe a slight
western terrace groundstone ~~at~~ near summit

In structure 29 features are still shallow.

In about 40cm BES in 7I/006 a bone of some sort was
encountered. SANTOS is clearing it off. Whether a possible
feature of the southern side of FRIPPA.

7I/007, finding some interesting upper portions of obsidian blade

AP-00-25-05 59

*
Shards
Chert
Obsidian
Groundstone

7H/019 - clearing up the 2cm or so

surrounding the feature ~~at~~ ARTEMIS 0-80cm BGS at SE corner of 3; include 5
found 70cm BGS at SE corner of square 3 west 3 of 31

on top of a lower stone of ARTEMIS where she makes a
indentation in up against the wall, a round clayish stone
was encountered; 20cm horizontal from top of ARTEMIS is the
area of excavation, starts at 0cm

found a doughnut hole in this area. Exact local unknown
but found from within these 20cm horizontal area

Shards
Chert
Obsidian
Groundstone

7I/007 - more shards than can shake a stick at
if this is a feature, its extremely shallow

7H/020 - Backdirt east of structure 31, probably from somewhere
in the Northern segment of my axial - stone barkbeater

Empty - 7H/021 - 0-10cm square 10 west of square 7 of axial trench
attempt to chase down HADES

Shards
Obsidian

7I/008 - 20-50 in square 2 east square 2 of axial 29
only 50cm in North of square in an attempt to
clear up feature KRACKEN

Shards

7H/022 - 0-20 in square 11 west of square 2 of axial 31

7H/023 - 10-20 in squares 4 & 10 west of 6 & 7 of axial 31
clearing up summit features at NW corner

Shards
Chert

7I/009 - 20-30 in square 2 east square 2 of axial 29

groundstone

rest of square measured at SE

Shards
Chert
Obsidian

7I/010 - 0-20 in square 4 east square 4 of axial 29

24-APR-06

7H/024 - 20cm-30cm BGS at NW of 11 to west of 2 of 31

clearing up connection, removing rocks

Shards
Obsidian

* 7H/023 - continue in 4 & 10 west 6 & 7 of 31

Shards
Obsidian

* 7H/025 - 0-20cm BGS in 12 west 4 of 31

tracing out fill surface

7I/009 - continue in 29

7I/014 - continue 29

In 7H/024 found bone at level of 20cm 67cm North of
ATHENA

AP-46-25-68

24-APR-68

groundstone matate piece found in 7I/Ø1Ø

Clearing off rocks in both lots of structure 29. Structure seems to be shallowly built. features are hard to identify.

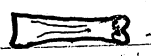
Structure 31 continues to be straight forward as far as the dimensions go. Summit seems a bit busy. looks like its been layered feature upon feature. Summit room excavation maybe tough, but that may just be me

Sheds
chest

7I/Ø11 - Ø-20cm BGS in square 5 to the east of square 2 of the axial trench of 29, topsoil

Sheds
chest
Observation

7H/Ø26 - Ø-20cm in NW of square 13 to west of square 4 of axial 31
Continue chasing out platform

* 7H/Ø25 had interesting obsidian sample add to must do list
In 7H/Ø24 found another piece of bone, this at 40cm BGS at NW of square 11 and 40cm EAST of VIOLA small bone 4cm long 1cm thick complete bone  - shape of bone

7H/Ø23 done at 20cm. Obsidian flake + few sherds found
came down on a surface I think and more detailed internal architecture

Sheds 7H/Ø27 - Ø-20cm BGS measured at NW corner of square 14 to the west of square 7 of the axial 31

7H/Ø28 - 50cm - 7Ø BGS measured at NW corner of square 11 west of axial trench of structure 31, looking for base of VIOLA
On summit of 31 don't pull ~~about~~ chest, just obsidian, not true of front of structure where chest dominates

found a tooth in 7I/Ø1Ø, because its near the body I found in the axial I think

Sheds 7H/Ø29 - Ø-20cm in square 15 to the west of 4

not a meter square 50cm by 1m

Sheds
observed

* 7I/Ø12 - Ø-20cm BGS measured at the NE corner of square 6 to the east of square 4, part of the connection of these structures 29 & 3Ø

~~AP-00-25-61~~ AP-00-25-61

Shards
obsid

FI/013 - ϕ -20cm BGS measured at NE of square 7 east
of square 1 of axial of structure 29

~~FI/013~~

Shard FI/001 - ϕ -20cm BGS at NE corner of square 1 north of square 1 of
the axial trench of structure 29, topsoil in area where
extension stop thing is

~~FI/028 also connecting~~

Shards
fitties

FI/030 = small triangular area where NESTIA & VIOLA
corner with each other, found bone under white limestone
rock below VIOLA, 33cm below base of VIOLA
finally found obsid at front of 31 in FI/028

Shard FI/031 - ϕ -20cm BGS measured at the NW corner of square 15 to
the west of square 7 of the axial of 31

Chasing the rest of ZEUS off the back of GANYMEDES

FI/002 - 20-40 in square 1 to the North of square 1
of the axial of structure 29 in NE

Shards
obsidians

FI/014 - 20-40 measured in NE of square 6 to the east
of square 4 of the axial of 29

Shards
fitties

FI/015 - 20-40 measured in NE of square 7 to the
east of square 1 of the axial 29

In the front of structure 31 walls have changed -

The axial trench nomenclature is the same, but
ARTEMIS splits into two features. The new one is
named APOLLO.

FI/030 - 30-50 off top of VIOLA in corner with ARTEMIS

FI/015 - found a small little vessel, whole @ no bigger
than an acorn

* FI/002 - found an interesting jar handle in the
shape of a man



looks like
a creme
paste

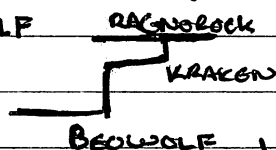
25-APR-66

AP-66-25-62

* FI/016 - 40cm in NE corner of square 6 to east of 4 of axial 29 found a small jaw near the extension off summit called

Shards Observed

BEOWOLF



} may have alternate naming but is what I'm calling them now

to FRIDDA/FREY

↑ GINGUNGAWGAP extension

FI/017 - 40-60 in NE of square 7 to the east of square 1 of axial 29 found nice Rat head near where this trench connects with western side of substructure - 2 excavation also encountering tons of shards and chert. 25x15 bag

Shards Observed

FI/018 - 0-20cm BGS in NW of square 1 to the east of the axial trench of structure 31 New trench

Shards Observed

~~Old~~ Trench oriented at

FI/019 - 0-20cm BGS in square 16 to the west of square 7 of the axial to 31 chasing out the summit

Shards Observed

FI/020 - 0-20cm in NE of square 2 to the west of square 1 of the axial trench in structure 29, found a nice piece of obsidian blade in this lot 6cm long

Sajanti

Shards Observed

FI/021 - 0-40cm in NW of square 2 to the west of square 1 of second layer in exposing ~~map~~ GINGUNGAWGAP

FI/018 - 40cm in square 5 to the east of square 2 of axial 29 clearing of more of FREY, FRIDDA has disappeared with connection of GINGUNGAWGAP

GINGUNGAWGAP is moving further west, A new feature

has appeared in square 6, seems like a floor or lower wall, now this feature will be referred to as NIEFLEHEIM

FREY keeps going east, am looking forward to the connection

FI/016 - notably have we uncovered a nice pretty wall NIEFLEHEIM But we've come across a pretty little SAR, alright


A huge Mother of a jar in a crazy hard place to get at



AP-00-25-63

The jaw is nestled nicely within a square created by FALSTAFF, NEIFLEHEIM, KRAKEN (?? Possibly a different feature) and BEOWOLF. It's broken, possibly have entire jaw. Positioned upright. Large chunks of it are complete. It's still in position. Many shreds are surrounding it.

7K/002-0- in NW corner of square 2 to the east of ^{axis} street 31
75/018- FRY turned a corner I'm afraid. I don't really understand how this is all connecting yet.

7H/032- took down a great deal of rubble. Bajauk chunk that came out of 75/004 was pretty large. Almost a brick, was burned and had a layer of repair.

75/046- jar lot, found a piece of Polychrome. Can't see picture there the dirtiness kind of wiped it clean. Back has three lines of color ^{red}  dulled color. Front side is more glossy and more colorful very pretty piece of pottery.

 black dots  red lines
/// orange tint

Shoulder of jaw is coming down around. Can't tell how much deeper it goes.

It's round and squat. Very big.

^{green} 75/005- 0-20cm at NW of square 3 to the west of square 2 of axis 29

Notes on Jar 75/016 Datum 24cm AGS to NE of square 6
FALSTAFF 51cm at top 74cm at bottom western wall
BEOWOLF 45cm at top 72cm at bottom eastern wall
NEIFLEHEIM 64cm at top 86cm at bottom ^{Northern} ~~Southern~~ wall
??? 60cm at top 72cm at bottom Southern wall
MAYA 78cm at rim 104cm at base as visible

ROCKS in FALSTAFF, 20x10, 15x12, 15x17 etc Between 5 & 10cm tall
River cobbles, men faced all measurements in cm

~~AP-00-25-64~~

AP-00-25-64

7I/018 - there is a corner. It also appear that FREY gives way to another structure. This feature is constructed of larger rocks named MIOGARD SERPANT. feature

Removing Part of FALSTAFF and ??? feature. Mays is cracking from heat

Sherds
Chert

7I/018 - 40-60cm

7I/019 - 0-20cm in square 8 off east of 1 & 2 - 2 square meters in one lot according to Ed's orders - east of 1 of axial 29

7K/002 - at 20 feet obsidian

7H/032 - Chert obsidian Sherds @ DE @ 20cm

7I/005 - 0-10cm at NW corner topsoil

Jar lot - small rocks inside the vessel
Bottom of vessel was round

[note: earlier in str 30, mislabeled MEXUCO & MEXCAN are same feature]

26-APR-00

Sherds
Chert
Obsidian 7I/019 - 0-20cm in square 8 to the east of square 1 & 2 of axial 29

Sherds
Chert 7I/006 - 10-20 in square 3 to the west of square 1 of the axial trench of structure 29

* 7I/020 - 0-10cm in square 6 to the east of square 9 of the axial 29

Sherds
Chert
Obsidian 7K/003 - 0-40 in square 2 to the east of the axial trench of 31

Sherds
Obsidian 7H/033 - 0-20 in square 17 to the west of square 8 of axial 31

Carbon sample in 7I/19 - @ 20cm probably nothing found another Mays this one very broken. Wouldn't have recognized it as anything before, next to one from yesterday. Similar to stuff I've seen before but wouldn't have recognized

Ed suggested that the area where these jars are coming from are storage space. It would have been storage space in between str 29 and 30. To get at it would need to tear down walls

Going to clean off next

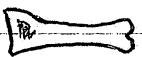
AP-00-25-65

square to remove more to expose the jaw for photo

There is some sort of substructure that is connecting with structure 29. It's not quite clear what it is

In square 8 ^{east} west of 1 of axial, in section that is ^{east} west of 2, a bone was found

FI/021- 20 40 in square 8 blah, blah blah - see above

Shape of bone  similar to one I found early right size and shape to be one of the phalanges

In FI/020 there is definitely another vessel

Also have a good portion of it. Need to get a depth on it.

It's wedged up against Beowulf

There are a few rocks ~~into~~ up against it. I think they are there for support

85cm BOS at SW corner rocks

24-28cm between to Hays



Still clearing this up

FI/021- found weird ceramic bit 

Manuel Perez came over and was telling me that in the 1970's he had seen people use Hays like the one we found and that in some places they still do. He told how his mother used one for cooking over a type of stove (didn't get description). He said he could tell what it was used for by its thickness. Interesting bits of information might be useful.

Eastern wall of structure 3 is appearing. Clearing out the tumble. FI/033 is still clearing up the surface. Line is coming up near FI/021 - calling this feature

AFTERTHOUGHT

FI/020 - Hays II lot - the rock that was above the Hays (tween 5 to 10cm) ended up being a Matate piece.

FK/004 - 40cm 50cm square 2 to east of axial 31

In search of base of DIONYSUS found a piece of Mono. Thought: could str 29 started as a storage area then become a living surface.

7I/020, 7I/021, 7K/004, 7H/033 - open lots

AP-00-25-66

red lump of clay/bajareki got popped out from square 6 east 4
in square 3 of the axial there is a square feature
A box feature that hasn't been named before, calling it
Yaballa.

In 7H/033 we are finding some skull bones among others
It's pretty near the surface but not at all surprising since
square 17 is connecting to square 8 where the leg bones
were found early. They are not in any particular context.

Shards 7I/022 - 40-50 in square 8 east of 122 of axial

7H/034 - 20-30 in square 17 to the west of 8 of 31

Shards
Obsid 7J/007 - 0-20 in 4 to west of 7 of axial 29

I'm taking apart the pot.

Base @ 90cm BGS at SW corner

UP against BROWLP

Lim. @ 64cm BGS @ SW corner

19cm South of NEIFLEHEIM

~~It~~ Rocks and Bones in the bottom of the base

The base of the pot is a black color and it sits on
rocks as well

27-APR-00

Shards
7I/023 - 0-20cm at NE corner of square 9 to the east of square 3 of
axial 29

Shards
Obsid 7I/024 - 0-20cm at NW corner of square 10 to the ^{east} ~~west~~ square 5 of axial
29

Shards
Just 7J/008 - 20-40cm BGS in NW corner of square 4 west 3 of axial 29

Shards 7H/035 - 0-30cm in square 18 to the west of square 9 of axial 31

Shards
Obsid 7K/005 - 0-30 in square 3 to the east of ~~square~~ axial 31



- figurine
(monkey??)
from 7K/005

Shards 7J/025 - 20-40cm BGS measured at NW

corner

corner of square 10 to the east of square
5 of the axial trench of 29

Shards
Obsid 7I/026 - 40-50cm BGS in SE corner of square 8 to the east
of square 2 (Southern meter) of axial 29

Pot storage of 7I/016 and 7I/020 was a covered by rock-fill
layer

AP-00-25-67

found in 7K10005 a small rounded piece of white Quartz
and a 5 1/2 cm long obsidian blade. Also think I've come
across the next terrace. named HEPHESTIUS

Named feature appearing in square 10 east 5, ARGARD

Bone *

7I/027 - 40cm x 10cm in square 10 to the east of square 5 of axial 29

Macha, found deeper than 40cm, 28cm ^{North} from ARGARD, 85cm ^{East} from
BEOWULF, 50cm from 2nd Haya, 40cm from 1st Haya, 80cm BS of ARGARD

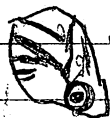
Shards
Quartz
Obsidian

7K/006 - 30-40 in square 3 to the east of structure 31

Shard
Obsidian
Bone

7H/036 - 30-40 in square 17 to the west of square 8 of axial 31

In 7K10006 found a piece of ceramic figurine. in one direction
it looks like a frog, in another part of a face and cuspal.



CARACOL



Frog

6m Sherd
Obsidian
BS1

7I/028 - 20-40cm BS measured in the NE corner of square 9 to the
east of square 3 of the axial of 29

found bone pieces

Shard
Chert
Bone

7I/027 - bone near a shard of the rim of a mother pot. Pot rim
is facing North as if pot had fallen on side. May just be a
sherd. Bones are very tiny. Don't think it will do any good to
draw this. 7cm from top of ARGARD 10cm North of ARGARD

80cm East of BEOWULF 10cm South of Rim SHERD

SHERD is 10cm East BEOWULF 7cm East Beowulf end

Positioned in E-west orientation

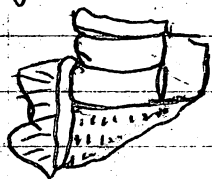
Are also carbon flakes in this lot

Shards

7J/009 - 40-50 in square 2 to the west of square 1 of the
axial trench of structure 29 NW

7H/037 - 0-20 in square 19 to the west of square 8 of axial 31 ^{NE}

found in 7I/028 - piece of figurine, not a face shape
rounded out in the center



-figurine

Surface in 29 kinda mirrors what's in front
of structure 30

28-APRIL-2000

AP-00-25-68

Shards
Sheet
Obs'd

7H/037- continuing the dig from yesterday

Shards
Obs'd

7I/029- 0-20cm BGS measured in the SE corner of square 11 to the east of square 5 of the axial trench of structure 29

Obs Shards
Sheet

7I/030- 40-50 BGS in NE of square 9 to the east of square 3 of the axial trench of structure 29

Obs'd
Shards

~~7J/010~~ 7J/010- 0-20cm BGS at SW corner of square 5 to the west of square 3 of the axial trench of structure 29

Shards

7J/011- 0-20cm in square 6 to the west of square 5 of the axial trench of structure 29

Shards
Sheet
Obs'd

7I/031- 0-20cm BGS measured in the NW corner of square 12 to the east of square 3 of the axial trench of structure 29

Shards
Sheet
Obs'd

7J/012- 20-30cm BGS at SW corner of square 5 west of axial 29

Shards
Sheet
Obs'd

7J/013- 0-20cm BGS measured at NE of square 7 west of axial 29

Shards
Sheet
Obs'd

7L/001- 0-20cm in square 1 to the east of square 6 of the axial trench of structure 29

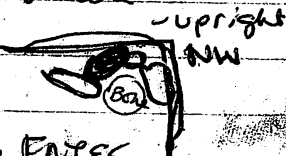
Connection between BEAULIE and RAGNOROK was uncovered in square 11 east of axial 29

Shards
Sheet
Obs'd

7H/038- 0-20 in square 20 to the west of square 8 of axial 31 found here in 7I/031 at about 20cm

There is an upright rock in corner of square bones were found at the base of it. Also a lot of shards are

turning up at same local mixed with bone 45cm North of NIELEHISM



Named feature at base of structure 31. The FATES

found a shaped groundstone Mono-sque piece in 7I/031

Looking at Viola, have decided that there is another feature

above her, features name KATE, Kate once cornered with ROOM GOODFELLOW. IT APPEARS

found two pieces of obsidian in 7J/013 that may fit together. At least they seem to mean the platform. They've been used, so the edges are worn

7J/014- 30- in square 5 west of square 2

1-MAY-2000

AP-00-25-69

Shards
Obs

7J/014 - continues from 28-APR-00 at 50cm

Shards
Obs

7J/015 - 20cm - 40cm in square 7 to the ^{west} east of square 4 of axial 29

Shards
Obs
Obsidian

7I/032 - clearing off soil in square 3 east 3 of axial 29

cleaning between rocks

Obs
Shards

7H/039 - square 19?? 20-40cm in NW corner of square 19 west 8 of 31

* note: I am somewhat distracted by bad dreams, exhaustion, & stress

Shards 7H/040 - 1-20cm in SE corner of square 21 to the west of 8 of 31

Shards
Obs

7J/016 - 1-20cm NW of square 8 to the west of square 1

Shards
Obs

7J/017 - 40-60 in square 7 to the west of square 4 of the axis of structure 29 @ NW

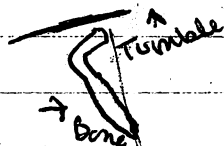
Bone in place 17cm below ZEUS at south of construction
some polished bone, also ~~some polished bone, also~~
~~bone that they contact to, HUMERUS, possibly~~

Shards surrounding it, MAY BE a polished bone tool

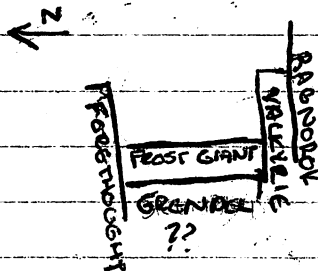
Shards
Obs

7J/018 - 20-40cm BGS at NW corner of 8 west 1 of 29

Bone is 57cm E of ZEUS's rear and oriented at 300°



Bein case thing in structure 29 will be named



Took out a large rock in 7I/032 to see what this is. It was tilted

Some of GREENOS looks like tumble
FROST guant is shallow

Plan of Attack for final week

STR. 29. four western squares

funky area at front.

If time side of summit east

STRUCTURE 31

clean up of west summit

east summit.

Shards
Obs

7J/019 - 1-20cm BGS measured at the NW corner of square 9 to west of square 5 of axial 29

7J/020 - 1-20cm in square 10 to the west of square 4 of axial 29

AP-00-25-70

FI/032 is a funky ~~sh~~ shaped lat. also takes up a bit of square 2 east of square 2
FI/021- Back dirt North of structure 29
Parrot-head figurine piece

2-MAY-2000

FI/032 - continued from Monday - started at 30cm

FI/020 - continued from Monday 30cm at end

FI/022 - 0-20cm BGS @ NW corner of square 11 to the west of square 2 of axial 29

oblique
Should
chest

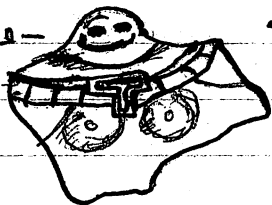
FI/041 - 20 - in small segment of square 16 in Ganyamede of structure 31, west of square 7

Bone in FI/041 - at 40 cm about small bit of animal

FI/023 - 20cm - 40cm BGS measured at the NW corner of square 11 to the west of square 2 of axial 29

interesting figurine fragment found in this lat. Brian collected it ~~the~~ the Virgin because the necklace was a cross. The figurine is indeed female. Bare chested. Her breasts are small and have nipples. Her nose is not humanlike face - The necklace is the most prominent feature

body -



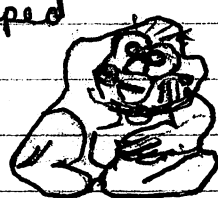
FI/041 stopped at 70cm in this segment 06 cm x 52cm

FI/042 - summit area, need to figure out what square on summit, near HEBE and HEBB's projected corner

finding many MATATE pieces in structure 31 summit also, huge mono piece from FI/023

whole ocassina, 30cm deep in FI/023, not really associated with any features. Monkey shaped

FI/042 - another matate chunk



Dance
the night
away

Shards
Chert
Obsid

75/023 - lot of the cool shit

figure face, hair is carved onto head, has a hole in the back like an occipital and ear spools. It's the whole head. Stopped at 40

Clearing off what may be the corner of the summit section in square 10 ~~see~~ west of square 4 of axial 29

Carbon came out of 75/32, but was touched. (Bashing head, groundstone thought it was a lone) Carbon was fibrous

Shards
Obsidian

74/042 - stopped at 45 Below wall surface. Most of the Matate chunks were found lying flat square 14

80cm to 160cm at NE corner

74/044 60cm - 70 in square 14 to the west of 7 of axial 31

Shard 74/043 - clearing off soil closest to Hades in square 17 & 19 west square 8 in 31

Shard
Obsid


75/024 - 40-50 in square 11 to the west of square 2 of the axial trench of structure 39

75/032 - at 90cm BGS

75/033 - in square 4 of axial trench

3-MAY-2000

Shards
Chert

75/033 - clearing deeper in square four, but lot is funky shaped  60cm at NE corner

Shards
Chert

75/062 - 0-20cm in square 2 to the east of square 7 of the axial trench of structure 29 SW

Obsid
Shards
Chert

75/067 - 0-40cm BGS at the NW corner of square 4 to the east of square 5 of the axial trench of 31

Shards
Chert
Obsid

75/025 - 0-20cm in square 12 to the west of square 3 of axial 29

Shards 75/026 - 0-20cm in square 13 to the west of square 5 of axial 29

Shards
Chert
Obsid

75/063 - 20-40cm in square 2 to the east of square 7 of the axial 29 SE

THE EASTERN FEATURE OF 29 W/O called DWARF

AP-00-25 72

Shards
Chert
Obsidian

7K/008 - 0-20 cm in square 5 to the east of square 5 of the axial trench of structure 31 NW

Shards
Chert

74/004 - 0-20 cm in square 1 to the ^{east} of square 6 of the axial trench of structure 29

uncovered two features, one is DWARF, the other is DESIRE

Shards
Obsidian

74/005 - 0-20 cm BGS measured at the NW corner of square 3

Chert east of square 8 of the axial trench of structure 29

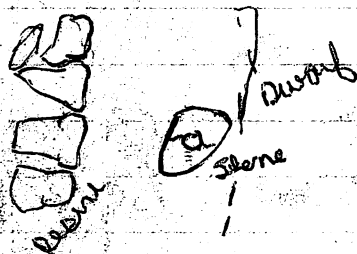
Shards
Obsidian

74/009 - 0-20 cm BGS measured at the NW corner of square 16 to the east of square 7 of the axial trench of structure 31

ground
chert
obsidian
shards

~~7J/027~~
7J/027 - 0-20 cm @ SW corner of square 14 west of square 3 of the axial of structure 29

found a hole doughnut stone, broken in half. Its 41 cm east of DESIRE 10 cm BGS at SE corner of square 3 east 8 of 29. It's sitting on DWARF



4-MAY-2000

continuing lts from yesterday

found the better part of a thin obsidian blade in 7J/027 8 cm long 1/2 cm wide all that is missing is the tip

Shards
Obsidian

7K/010 - 0-20 cm at NW corner of square 7 to the east of square 8 of the axial of 31

74/010 - 0-20 cm in square 4 to the east of square 8 of the axial trench of 29 NW

In 7J/027 found a tiny pointed piece of groundstone. Really tiny and put it in Sherd bag. at 00 cm in SW

74/007 - 0-20 cm in NW of 4 east of 8 of 29

AP-00-25-73

Sheds
Found 7L/007- 20-50 in square 4 (NW corner) to east of square 8 of the axial trench of structure 29

7J/028- 20-50 in square 14 to the west of square 3 of the axial trench of structure 29, measured at SW corner

Sheds
Found 7K/011- 0-20cm in square 8 east of square 5 of the axial trench of structure 31

In Str 31, the ~~west~~ eastern summit wall is APHRONITE and the extension off of HERB in HERAPLES

7M/001- square (50 x 100 cm) to North of structure 29

searching for more of AFTERTHOUGHT 0-30cm at NE

7L/008- 0-20cm in square 5 to the east of square 7 of the axial of 29

5-MAY-2000

Sheds
Found 7L/008- 0-60 cm in square 5 to the east of square 7 of the axial trench of structure 29

Sheds
Found 7M/002- 0-30cm in NE corner of square 2 (50cm x 100cm) to the North of structure 29

Sheds
Found
Found 7J/029- 0-40 cm in SW of square 15 to the west of square 4 of the axial trench of structure 29

Sheds
Found
Found 7K/012- cleaning up square 7 to the east of square 8 of the axial of 31 - 20cm - 40 BGS at N ~~NE~~ E

found a matate piece with a leg in square 15 in the initial lot. More groundstone

AFTERTHOUGHT raises up a course

found doughnut stone 30 cm BGS and 20cm west of DISPAIR in square 15

7J/030- square 14 - cleaning up more in area of square 14 and 12 at 50cm -

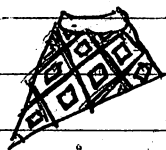
Sheds
Found 7M/003- square 3 to west of square 2 to the North of Str 29 0-30 expanding to a square meter

7J/031- 0-65 in NW of square 16 to the west of square 3 of axial of 29

found in 7M/003

AP-00-25-74

cool looking shield with deeply etched design



found carbon in lot 7L/003, lot has gone deeper

then 20cm in an attempt to figure out what the hell is going on. at 60cm BCS

Named more features in Str 29, after SANDMAN characters used. Deire, Despair, Destruction, Destiny.

7M/004 - 30-50 in squares 2 & 3, only ~~the~~ northern 50cm to the North of structure 29.

7J/032 - cleaning up where VALKIRIE is 20cm Below VALKIRIE. Small ^{pebbles} like fill in square 14 or thereabouts. It's been pushed back to 16 to the west of axial in structure 29, trying to clarify walls.

In 7M/004 - found shit load of shreds outside line of AFTERTHOUGHT, I think I have a probable corner.

~~IN 7J/032~~ IN 7J/032 is tones of dirt/pebble fill

Possibly to create a surface, lot ended 20cm Below top of Valkyrie on GRONDEL. 52P42 cm area behind grundle to open pit in 14.

7M/005 - cleaning the northern face of ~~unseen~~ DELERIUM to expose her wall near 20-40 in square 8 (Southern) east of 2.

7M/004 - 50cm Shred Chest Obsid Midden area

Chest
Shreds
Obsid

7M/006 - Square 4 to North 29 0-30cm

7M/007 - Square 5 to North of 29 0-30cm

~~Shred~~
Empty

7J/033 - cleaning up DESPAIR where it corners with RAGNOROK Square 13 of Str 29 50cm at deep

Back wall of REAR ROOM to 29 is HOB

Shreds
Obsidian

7M/008 - 20-40 in square 24 to the ~~west~~ east of square 5 of the axial of 30 Shreds obsidian at 70cm to the west of BEATRICE of Sub-2-1 found half a mold.

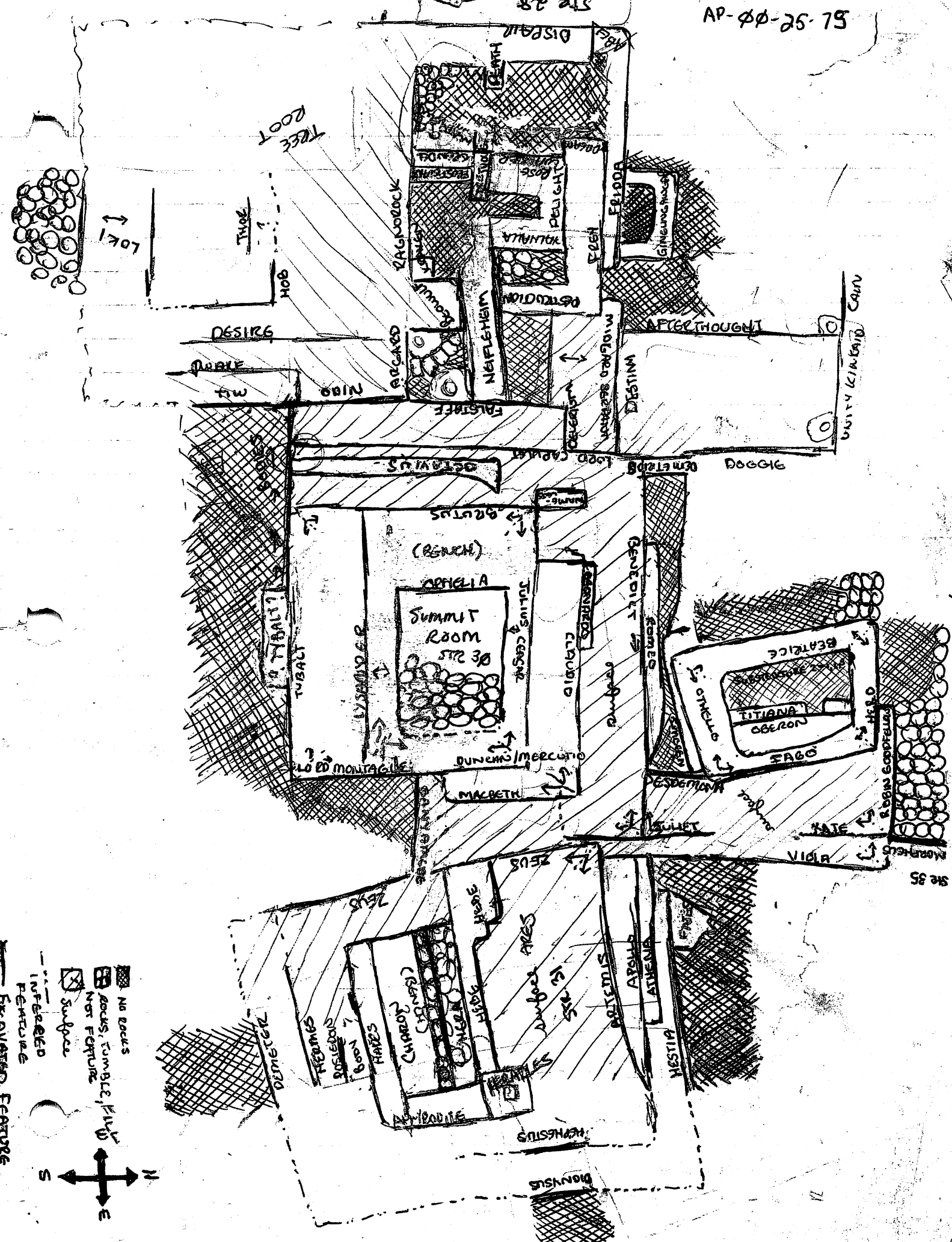


7M/009 - Rear of 30

7M/010 - Rear of 31

7M/011 - Rear of 29

7M/012 - Side



Legend:
No rocks
Rocks, tumbled, full
Not feature
Surface
Interred feature
Excavated feature

Str 35

8

AP-00-25-76

Final Notes: Description

Substructure 2-1, Substructure 2-2, Substructure 2-3

Substructure 2-1 consists of four features connecting to form a rough rectangle with an opening in the center which was most likely filled in with dirt/sherd fill to create a dirt floor inside the structure. Substructure 2-1 is the latest of the three substructures.

The Northern wall of Substructure 2-1 is HERO. Hero has a length of 255 cm and an average height of 49 1/2 cm on her northern side and an average height of 33 cm on her southern side. There appears to be two separate phases to HERO's construction. There are two courses of smaller cobbles to the southern internal side of this feature and one course of larger cobbles facing north on the outer side of HERO. Three courses of cobble in all. [There are possibly three post holes visible in ~~HERO~~ BEATRICE. These gaps are at 120 cm, 340 cm, & 300 cm. The gaps are small and shallow.] The inference is being made because the cobbles in this area are imbedded in the wall at angles or spaced in a way that leaves a slight gap. Other possible theories for the existances of these gaps or indentations is decay and movement over time. The northern face of this feature is three courses high. Southern side is also three courses high though the size of the cobbles is very different. The ~~eastern~~ eastern side of HERO, the wall rides over OBERON of substructure 2-2. Where HERO goes over OBERON the course is reduced to one, possibly two. The southern face of Hero met over OBERON rides on a layer of dirt/sherd fill. Only 9 cm of open space exists on the internal portion, AKA, the southern face of HERO. It connects with IAGO and BEATRICE. It seems to me that the southern face of HERO was placed into position after IAGO. My reasoning for this is that the southern face is wedged in against BEATRICE and IAGO, leaving the line of there eastern and western faces visible.

HERO BEATRICE 7' 1" IN HERO & IAGO 7' 1" IN

AP-88-25-77

Average cobble size in HERO is difficult to determine because of the differences of construction of the Northern and Southern faces. Discuss size in two sections separately. In Northern face of structure the average rock size is 14 cm x 30 cm. The first uppermost course has rocks ranging in height from 11cm to 22cm and in length from 28cm to ~~30~~ 33cm. The lower courses have close to the same range of height variation with total mean of ^{mean} 14cm and a somewhat ~~more~~ different range of lengths between 25cm to 36cm with the overall mean near 30cm. Construction of the Northern face of HERO consists of layering of rock with mud for mortar. There is no real set thickness of mud used, thickness varies within the same rock. It seems that the mud was also used to level the layer of rocks, thus making the rock size variation workable. Rocks in this feature are not staggered, but piled one on top of the other. Four of the stones were artificially faced. Most are natural shape. No visible use of limestone in the northern face of HERO. Southern face of HERO rocks are smaller. Rocks vary from 6cm to 10cm in height with an average near 7cm and vary in length from ~~10~~ 10cm to 20cm with the average rock being closer to 20cm. Average cobbles dimension is 7cm x 20cm. These rocks are much closely compact because of their flatter shape with very little mud mortar between them. What mud mortar is visible contains phreds, which may just be residue from dirt/sherd fill. ~~The~~

The western wall of substructure 2-1 is called BEATRICE. BEATRICE has a length of 311 cm, an average height of 47 cm on her western face and an average height of 34 cm on her eastern face. Beatrice Southwest corner with OTHELLO sits on top of feature IMOGEN, however only 63cm of her western face sits on this feature. The rest of BEATRICE rests on soil. The western face is 3 ~~4~~ courses high, depending on area of wall you view. Four courses at the point where BEATRICE rides over IMOGEN.

The base of BEATRICE is chunked, especially the area where BEATRICES western face corners with OTHELLO. Construction consists of cobbles stacked on top of one another with mud mortar used to hold them in place. ~~There is no~~ smaller rocks sometimes fill the gap along with mud between courses of cobble. The average size cobble is $2\frac{1}{2}'' \times 3''$ and most have a squarish or large oval shape. ~~Apparently~~ there are 5 visible artificially-faced stones. The rest are natural in shape. Most ~~rocks~~ cobbles are around 20 cm high and vary from 28 to 33 cm in length with the exception of two stacks four courses high, just after BEATRICE goes over IMOGEN. In these stacks the average height is 18 cm. Like HERO, Beatrice's eastern side rests on a layer of dirt/pebbled fill. There are about three courses of cobble on the eastern face, though smaller cobble. Like HERO, no limestone was used on the outer face, but was used on the inner face. Four visible pieces of limestone can be found on the inner face. ~~The~~ Cobble length varies from 10 cm to 30 cm without one size length dominating. Cobble height varies from 5 cm to 15 cm, where there are cobbles of 15 cm there tends to be two courses, so they are relatively few in number. From the juncture with OTHELLO to the juncture with OTHELLO, BEATRICES eastern face measures 227 cm. ~~The~~ BEATRICE is three courses wide. [A possible post hole at 200 cm based on western face measurements of HERO]


The southern wall of substructure 2-1 is OTHELLO. OTHELLO is 265 cm in length and 40 cm ~~deep~~ high on the southern/outer face and 20 cm high on the northern/inner face. Othello is ~~the~~ wider than the other three sides of substructure 2-1. It is 5 courses thick with no visible signs of post holes. At its highest point Othello is 4 courses high. All of these courses ride over IMOGEN. OTHELLO was constructed over a dirt fill layer which seems to have

used to level the surface that OTHELLO was built on, since it is only noticeable where IMOGEN seems to dip down slightly. The base of OTHELLO is chinked into place and chinking stones appear to be used to hold each course into place. There is also a mud mortar used to hold the cobbles into place. Four stones appear to be artificially faced, one of which is the corner stone with BEATRICE. Stones used on the southern face are flatter than seen in the outer faces of the other two walls, except for the corner stone. Cobble height varies from 6 to 11 cm with an average closer to 6 cm, except the corner cobble which is 20 cm high (not including chinking stones). Length ranges from 17 cm to 36 cm with an average stone being around 25 cm long. Chinking stones are mostly oblong, rounded ~~pebbles~~ ^{long} pebbles of around 8 cm by 3 cm high or smaller. There are at least two visible limestone cobbles (not out blocks) in the southern face of OTHELLO. OTHELLO's northern/winner face is also four courses high. It is also set on top of dirt/shed fill, though it seems to ride lower on the fill surface. The eastern side of OTHELLO sides over OBBRON, and goes down to three courses, but only at its corner with IAGO. The upper most course has an average length of 30 cm, while the lower courses have average rock length near 15 cm to 20 cm but no wider. Cobble height in the ~~the~~ northern face of OTHELLO varies from 4 cm to 16 cm, with an average size around 13 or 14 cm high throughout all courses. From its juncture with BEATRICE to its juncture with IAGO the inner face of OTHELLO is 131 cm. All faces are natural and no limestone was used on the inner face of OTHELLO.

Internal face distance from OBERON to HERO at IAGO is 226cm.

The eastern wall of Substructure 2-1 is IAGO. IAGO appears to be built on top of OBERON. ~~Eastern face~~ The base of the eastern face is not visible. One course of cobbles is visible rising over the surface created by KATE. IAGO is three courses wide and one course high on the western/inner face. IAGO is 423 cm long and 14 cm high as visible on eastern face. The cobble length ranges from 20cm to 37cm on eastern face with an average around 23cm. The inner/western face cobble length ranges from 15 to 25cm, with an average length being 20cm. Height of cobbles on inner face range from 6cm-15cm with the average size being nearer to ten cm. Eastern/outer face height of cobbles ranges from 9cm to 20cm with the average cobble measuring 13cm high. All stones faces visible in IAGO have a natural face and two limestone cobbles were used on the western face. Held together by Mud mortar.

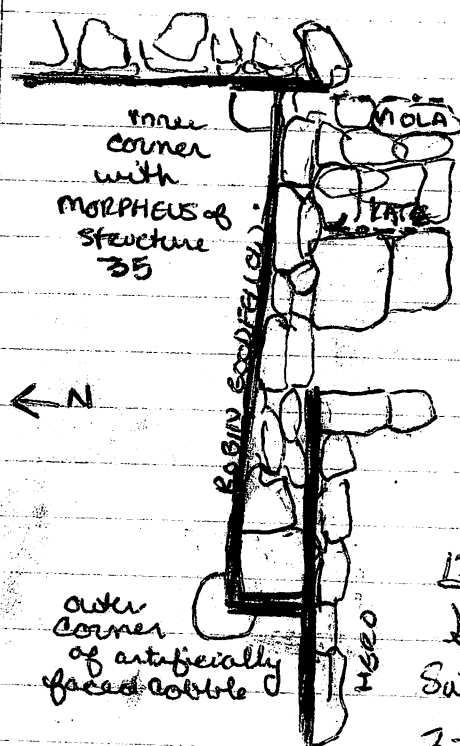
ROBIN GOODFELLOW is a feature that extends the wall of HERO out one course on the northern face ~~and~~ partially and creates the Northern Corner of the surface/terrace formed by KATE and VIOLA to the east of Substructure 2-1. ROBIN GOODFELLOW is 265 cm in length and has an average height of 25 cm.

ROBIN GOODFELLOW is one course thick and four courses high. Most cobbles are naturally faced, though Dix have an artificial face. There is no limestone in this construction. ROBIN GOODFELLOW connects to MORPHEUS of structure 35 to form ~~a corner~~ an inner corner . ROBIN GOODFELLOW only connects and adds onto HERO for 114cm and ~~also~~ creates an outer corner with VIOLA. The average cobble in ROBIN GOODFELLOW is 25 cm long by 12 cm high. The length of cobbles ranges from 22 cm to 30 cm while the range of height is from 22 cm to 6 cm. The cobbles that stop to form a cornered addition to HERO are deliberately faced.

Depth of ROBIN GOODFELLOW is roughly equal to northern face of HERO which suggests that they were constructed contemporaneously, or that ROBIN GOODFELLOW is later.

AP-68-25-81

Drawing/Sketch of Robin Goodfellow and connections



MORPHEUS is an eastern facing feature that connects to ROBIN GOOD FELLOW. MORPHEUS is part of Structure 35 and has not been completely excavated. MORPHEUS has been excavated to a length of 118 cm and an average depth of N/A cm. Most likely, MORPHEUS continues to go to a deeper depth. Of the visible rocks only one is artificially faced. The cobbles average 9 cm in height and 15-28 cm in length.

Substructure 2-2 is partially below Substructure 2-1. It is earlier than Substructure 2-1 and later than Substructure 2-3, on which Substructure 2-2 was built directly on top of. Only clear visible evidence of this Substructure is feature OBERON, though I suspect that VIOLA ~~is~~ is part of Substructure 2-2 because ~~off~~ its upper surface seems level with that of OBERON. OBERON disappears on its Northern and Southern ends under HERO (North) and OTHELLO (South). OBERON has only one visible wall face, and is facing East. OBERON dips down into the gap left between 12 cm and 172 cm in TITIANA. The average height of OBERON is 23 cm and the length of the visible portion of this feature is 236 cm. Only 2 courses of width are visible. Two courses deep except in dip where there are three courses. All cobbles have a natural face. The ~~width~~ length ranges from 4 cm to 33 cm. The height from 6 cm to 30 cm and width of upper course ranges from 23 cm to 30 cm. The average height is 15 cm, length 20 cm and width 28 cm. Five limestone cobbles are visible.

The earliest substructure is substructure 2-3, which has only feature TITIANA exposed. TITIANA disappears under HERO and does not reappear on the other side of HERO. TITIANA's southern end seems to turn a corner before reaching OTHELLO, though most enough of this feature is exposed to say definitely if it turns and VIOLA's surface prevents the structure from being picked up on the eastern side. TITIANA faces westward and has a gap in her construction, a possible doorway. TITIANA is only one course high and only one course of her width is visible. The visible length of TITIANA is 224 cm and her average height is 14 cm. Her gap is between the 112 cm mark and 172 cm mark using the apparent corner in the south as the 0 point. Only 5 cobbles are visible. These measurements, from North to South are 9 cm length x 10 cm high, 23 cm length x 18 cm high, 37 cm length x 20 cm high, 29 cm length x 10 cm high, 45 cm length x 18 cm high.

KATE is part of the terrace feature to the east of IAGO. KATE seems to be constructed by a fair amount of fill to the height of IAGO in areas. KATE's eastern line is 245 cm in length and her average height is 12 cm. She seems to corner with ROBIN GOODFELLOW with two large rocks. The corner stone dimensions are 46 cm x 49 cm, followed by a rock that is 31 x 43 cm with a height of 12 cm. Height of largest stone not visible. The average stone in this construction is 24 cm x 25 cm x 8 cm. KATE's width is 106 cm. KATE is built on top of VIOLA. Two oval chinking stones are visible (10 x 4 cm average). Cobblestone mainly one cut block as part of fill. Naturally faced. 4 limestone cobbles as part of fill.

VIOLA is the larger and earlier version of the terrace onto which KATE was built onto. VIOLA is 668 cm long and is 41 cm high in the south where the depth is visible. She is between two and three courses high, indefinite amount deep. VIOLA's eastern face consists of mostly cut or artificial faced blocks and cobble. At least 6 of the cut blocks are

limestone. The visible width of this feature is 132cm. The width of the construction material is about 30cm (average) in the North and 20cm in the South. Length of stones is not visible. Depth, where visible is 8cm. Mud is used as Mortar. VIOLA extends to the juncture of Sub 2, St 30, 031 creating a walkway. VIOLA also joins/connects with MORPHEUS of Structure 35. Part of VIOLA blends with BENEDICT, DESDEMONA, and JULIET ~~where~~ and here it is difficult to tell what the ~~depth~~ widths of each include.

JULIET is approx. 225cm long and 15^{\pm} cm deep. She appears to make up the eastern faces of features DESDEMONA and BENEDICT. JULIET is constructed of cut block and limestone as well as cobble. I suspect that the Southern 75cm of JULIET are the eastern face of BENEDICT and the Northern 150cm are part of DESDEMONA. I suspect this because the Northern portion of JULIET consists of cut block while the South is constructed of cobble with natural face. The Average cut block has the dimensions $28 \times 46 \times 8$ cm, while the average cobble is $32 \times 26 \times 12$ cm more or less. JULIET is two courses high and possibly three courses wide. Suspected width of this feature is 113cm.

DESDEMONA is 120cm in length and approx 30cm deep. Possibly used as a retaining wall to hold in fill used to fill gap between IMOGEN and ROMEO.

Constructed by capping a layer of stone (cobble) fill with 2 or 3 courses of cut block or square cobble. Originally were three large cut blocks that were removed during course of excavation. Dimensions of surviving rock is $56 \times 28 \times 6$ cm. Average non-cut cobble is $31 \times 23 \times 6$ cm. Cobble have natural faces. ~~for~~ for width of feature see width of JULIET.

was

AP-ØØF25-84 84

IMOGEN is among the earliest constructions. IMOGEN is ~~226~~ cm long and 14 cm deep. She may be built about the same time as TITIANA. Large flatist Naturally faced cobbles are the construction material. One limestone. Only one course high, Four course width visible to NW. Corner of OTHELLO and BEATRICE is built on top of IMOGEN. IMOGEN disappears into OTHELLO and DESDEMONA. Not enough visible to find her NE corner, NW is not connected to anything. Visible width is 86 cm. Average cobble is 38×10 cm, width not visible.

Structure 31 is the furthest east of this group. Simple architectural style. Earliest basal wall is HESTIA. HESTIA is 253 cm long when she disappears into the wall of the excavation. HESTIA is 10 cm deep. Constructed of natural faced cobble. Most average 10 cm \times 8 cm with width not visible with the exception of one large rock measuring $52 \times 36 \times 15$. AT THE corner of HESTIA a small circular feature appears. THE Fates, as this feature is called is ^{length} 78 cm ~~wide~~ and 10 deep and is constructed of cobbles. Average size cobble is $27 \times 20 \times 8$ cm. N-S width of feature is 47 cm.

ATHENA is the feature built on HESTIA. 20 cm of HESTIA sticks out under ATHENA. ATHENA begins 57 cm to the west of the eastern wall of the excavation, rides over HESTIA and extends past HESTIA 52 cm, ending 15 cm away from VIOLA. BOTH HESTIA and ATHENA are below and probably earlier (at least HESTIA, maybe not ATHENA) than VIOLA. ATHENA is made of naturally faced cobbles and 3 limestone cobbles. Average cobble dimension is $15 \times 20 \times 8$, one course high. Seems to be tacked onto ARTEMIS and APOLLO, 15 cm wide is this feature

AP-00-25-85

ARTEMIS can be divided into lower ARTEMIS and upper ARTEMIS. LOWER ARTEMIS is 141 cm long and 67 cm deep when it disappears into the ~~west wall~~ ^{east} wall of the excavation. Upper ARTEMIS and lower ARTEMIS, plus ATHENA and HESTIA combine to form a stairway to ARES surface. Lower ARTEMIS is constructed of cut block, cobble and limestone of various sizes. Smaller ones are 12 x 4 and larger are 28 x 12, width not visible because of UPPER ARTEMIS. UPPER ARTEMIS is 37 cm long x 22 cm deep and rises over VIOLA to corner with ZEUS. Constructed of cobble, few with artificial faces and only two visible limestones, mud as mortar. Average size cobble is 28 x 12 cm, width not available. ARTEMIS is 4 courses high and 4 courses wide below ARES floor. Width of ARTEMIS is 93 cm.

APOLLO is the 165 cm long wall that is on the same line as LOWER ARTEMIS. APOLLO is 22 cm deep and sits above ATHENA and abuts with VIOLA. VIOLA is one course above APOLLO, or may have been constructed after APOLLO, or APOLLO may have been constructed to sit slightly lower than VIOLA. I favor the latter idea because APOLLO is in line with LOWER ARTEMIS which was later than VIOLA. APOLLO does not rest its rear next to upper ARTEMIS. Constructed of smaller cobbles and limestone than lower ARTEMIS. One to two courses high. Average cobble is 14 x 28 x 4.

ARES is a stone floor surface 435 cm long and 560 cm wide. The floor is a fill layer 36 cm deep where most of the stones on the surface were laid in fairly flat. Some of these are obviously cut block and some limestone was used. ARES creates a platform onto which the rest of the summit was backed on.

AP - 00 - 25 - 86

HERAKLES is a box feature that was tacked onto HERA and HEBE. HERAKLES consists of three small cobblestone walls 95 cm NE-NW, ~~67~~ 67 cm NE-SE, and 65 cm NW-SW with HERA making the back wall. The feature has a depth of 30 cm and the internal square was filled in with Rock fill. The average size cobble used in this construction is $20 \times 28 \times 14$. All cobbles have a natural face and were rectangularly shaped. Mud is the mortar. ~~Feature is about three courses high.~~ Feature is about three courses high.

HEBE is 335 long and 20 deep. At her tallest point she is 4 courses high and three courses wide at her widest point. HEBE is $65\frac{1}{2}$ cm wide at her deepest point. This area is to the west and extends from the junction with ZEUS to 99 cm east. HEBE then steps in $24\frac{1}{2}$ cm for another 20 cm east, cutting in again 19 cm, ~~at this point~~ where she continues east until she hits HERAKLES. Her width at this point is 19 cm. Very little limestone is used in the thinnest section. Average size stone is $14 \times 12 \times 6$ cm. In thicker sections more limestone is used and the average size is $19 \times 14 \times 7$. Limestone is cut, cobbles retain their natural face.

HERA is directly behind HEBE and is a more substantial wall. Built out of ARES, HERA is 400 cm long, 50 cm deep and has a width of 54 cm. HERA is two courses thick and 4 courses wide high at highest point. Mostly constructed out of naturally faced cobble, only one visible limestone. Average sized cobble is $27 \times 25 \times 6$ cm, smaller stones are about $20 \times 15 \times 6$ cm.

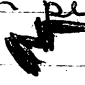
APHRODITE is — long and depth is unknown because base of feature is unexcavated. Eastern wall of larger summit feature. APHRODITE is 70 cm thick. Average cobble is $20 \times 26 \times 9$ cm. Mostly natural face cobbles.

AP 08-25-87

CHARON is 302 cm long and 111 cm deep. Constructed out of Naturally faced cobbles, generally in an ablong shape average dimension of cobble is $32 \times 20 \times 10$ cm. Width of wall is 46 cm. HADES is 302 cm long and 40 cm deep. He is attached directly to CHARON as HEBE was to HERA. Constructed out of cobble, average size $15 \times 12 \times 5$ cm mud mortar. 20 cm wide is feature. Between HERA and CHARON is stone fill, which creates a Bench like structure out of HEBE/HERA. APHRODITE, AND CHARON/HADES. THERE is no western retaining wall for the Bench. Bench width on west, from backside of HERA is 116 cm. HERA continues west 112 cm to join with ZEUS.

POSEIDON is only visible for 79 cm and is 20 cm deep. Constructed out of cobble, natural faces North. Line disappears, no clear reappearance. I suspect POSEIDON is the backside (North facing side) of HERMES, since no Backside to HERMES has been excavated.

HERMES is 210 cm long when it disappears into both sides of the excavation. HERMES is 42 cm ^{deep}. Constructed off cobbles and uncut limestone courses in width unclear. 5 courses high along DEMETER. Set in 43 cm from Demeter. HERMES faces south, not artificially faced. Average cobble is $30 \times 17 \times 11$ cm. Some cobbles are as thin as 6 cm, mud mortars used.

DEMETER is the ^{non} basal wall. Only 95 cm of DEMETER HAVE been exposed. She has a depth of 52 cm. She has been pushed out and is angled downward like this  ~~probably~~ most likely from decay of structure. Six courses high. At least two courses wide. Average size cobble is $18 \times 20 \times 10$. Some cut block, Limestone used as cheikers. Mostly naturally faced rocks.

AP-04-25-88

DIONYSUS is the eastern basal wall. 120 cm have been excavated. DIONYSUS disappears into the walls of the excavation. DIONYSUS is 24 cm ~~that~~ deep, one course high with a row of chinking stones to hold it in place. I suspect that it is DIONYSUS corners with HESTIA because of the type of construction. DIONYSUS has three visible courses in width. in centimeters the width is 91. Construction is of large rocks. The average size of the rocks is $37 \times 22 \times 15$ (deep). ~~Most~~ All are cobble, no visible limestone, natural faces on them.

HEPHESTEUS is about 3 to 5 courses high, depending on the size of the rocks that ~~get~~ are in the wall at a given area. Construction is of cobbles with natural faces, no visible use of limestone. HEPHESTEUS is built on DIONYSUS. I suspect it joins with ARTEMIS to form a corner. Width of this feature is difficult to determine, possibly 4 courses wide, not sure because this section of summit is not clarified well. Possible width of 120 cm if guess at edge of wall is correct. Average cobble $23 \times 27 \times 10$ cm deep.

ZEUS is 300 cm long and 94 cm deep. Three courses high built on top of GANYMEDES platform (possibly). Hard to tell which came first GANYMEDES or ZEUS. It appears that ZEUS is built on GANYMEDES in the south, but that GANYMEDES is wedged into the space between 8130 and ZEUS in the North, however ~~considering the~~ the Northern base has many chinking stones which can imply that ZEUS is built over GANYMEDES. Material is cobblestone with 4 visible pieces of limestone. ~~Lowest~~ No artificially faced cobbles. Average Cobble is $20 \times 22 \times 8$ cm. Possibly 3 courses wide & 86 cm wide, though this is unclear not well clarified in that capacity.

AP-00-25-89

GANYMEDE is 183cm long and 18cm tall. GANYMEDE is a stone surface onto which MACBETH and ZEUS were built onto. GANYMEDE is mostly fill one course high. Most fill is roughly the same size and lies flat. Connects St 31 and 32. Average size cobble $30 \times 22 \times 15$. Not artificially forced. Some limestone.

Romeo is 290cm long and has a depth of 20cm. Romeo curves in a semicircle shape in front of BENEDICT. Romeo seems to have been attached onto BENEDICT rather than built before BENEDICT. There was fill connecting Romeo to IMOGEN, this fill was removed during excavation. Constructed out of mud mortar and non-modified cobblestone (only one piece of limestone was used. Average cobble is $17 \times 28 \times 11$). Romeo is two courses thick (50cm at widest point) and 2 courses high.

BENEDICT is the front wall of structure 30 and measures 550cm in length and has a depth of 20cm. BENEDICT is above ROMEO. Constructed of non-modified cobble and mud mortar. BENEDICT creates a platform onto which the summit of St 30 seems to be constructed. BENEDICT is three courses high. average cobble $22 \times 24 \times 17$. Some indication on eastern side that BENEDICT is 4 courses wide, and that GANYMEDE was filled in to make a larger platform after MACBETH was built. On western side BENEDICT does not corner in such a shallow way but corners with LORP CAPOLET to form a large platform.

LEONARDO is 144cm addition to the front of CLAUDIO. LEONARDO's average height is about 12cm. LEONARDO is built on top of BENEDICT, is one course (20cm) wide and 3 courses tall. The average size cobble is $15 \times 13 \times 9$ cm. Constructed out of non-modified cobble, one limestone chunk. LEONARDO and CLAUDIO seem to form a step out away from the summit of this structure. The dimensions of this step out are 70×146 cm.

AP-004 -25-90

CLAUDIO is 300 cm long and about 23 cm high. CLAUDIO begins at about the same location as LEONARDO but continues east to corner with MACBETH. CLAUDIO is 2 courses high and one course (45 cm) thick. CLAUDIO is built onto the front of JULIUS CAESAR, on top of BENEDICT surface. Constructed out of cobble, all but to have non-modified face, the two that are artificially faced are at the corner with ~~MAC~~ MACBETH. Average size of cobble is $20 \times 30 \times 10$.

NAMELESS is a relatively small or course wide, two course long, three course high feature tacked into the corner of JULIUS CAESAR and BRUTUS. NAMELESS is 95 cm long, 33 cm wide, and about 25 cm high. Constructed out of unmodified cobble and mud mortar, the average cobble is $38 \times 22 \times 10$ cm. The LEONARDO/CLAUDIO, Part of JULIUS CAESAR, and NAMELESS delineate an inset "room". The dimensions of this inset are NE-NW, 91 cm, NE-SE 76 cm, and NW-SW 90 cm. There also appears to be a perimetric of stones in this section similar to the ones used to hold up MOYAZ only much smaller in size.

JULIUS CAESAR is the northern wall of the summit construction. JULIUS CAESAR is 370 cm long and about 27 cm average in height. JULIUS Caesar is two courses or 48 cm wide and one course high. JULIUS CAESAR is built on top of a layer of soil and sand fill. Constructed of non modified cobble except for the NW corner with BRUTUS which is artificially faced on two sides to produce a sharp corner. AVERAGE size rock is $20 \times 15 \times 8$ cm. JULIUS CAESAR connects on its eastern side with MACBETH and DUNCAN/LORD MONTAGUE/MAYOLIO.

AP-00-25-91

BEUTUS is 363cm long and 28cm high connected to JULIUS CAESAR and LYSANDER and TYBALT. BEUTUS is built on a sherd/clint layer. HE is three courses high and possibly two courses wide, though this is not so clear. Rint/Sherd fill layer is on top of BENEDICT. Constructed of primarily non-modified cobbles, though there are one or two that have been faced artificially as well as a couple of pieces of limestone. The average size of these cobbles are $25 \times 20 \times 8$ cm. Mud was used as mortar.

LYSANDER is 380cm long and ~~380cm~~ height can't be determined. LYSANDER is the near summit wall. LYSANDER is two courses thick (42cm) constructed of non-modified cobble $20 \times 20 \times 8$ cm average size. Three obvious piece of limestone. Mud used as mortar. Connects to BEUTUS on west and LORD MONTAGUE on east.

MACBETH is the three course high one course (32cm) wide. MACBETH sits on GANYAMEDS and is an eastern addition to DUNCAN/MALVOLIO/LORD MONTAGUE. THE Northern corner of GANYAMEDS connects with CLAUDIO, while the southern only corners on its own, not with another feature. At its North, MACBETH dips down in front of GANYAMEDS but behind BENEDICT. This was later filled in to be level with GANYAMEDS. Construction is of Cobblestone (one limestone). Most are non-modified, though a few are artificially faced (5). The limestone is a cut block. One of the stones is possibly a groundstone matate.

Average size of cobbles $32 \times 33 \times 11$ cm. 40cm high 233cm long. ~~OPHELIA~~ OPHELIA is the N-S oriented feature that marks off the bench in structure 3B's summit. OPHELIA is 210cm long and 14cm high. OPHELIA is two courses high. The backside of this Bench is BEUTUS and she is framed in by LYSANDER and JULIUS CAESAR. OPHELIA is made of mostly non-modified cobblestone and one cut limestone block. Average size is $27 \times 20 \times 8$ cm.

OPHELIA occupies the western portion of the summit room of structure 30. The summit room is not completely visible because of tumble, but by following the inner line of DUNCAN, CEASAR, & LYSANDER we get the following ~~down~~ dimensions NE-NW-182cm, NE-SE-135cm, SE-SW 192cm.

DUNCAN/LORD MONTAGUE/MALVOLIO (DLM) is 410cm long and 70cm high. MACBETH was built onto DLM and GANYMEDE was built later because GANYMEDE is above a layer of soil that reaches the base of DLM. DLM is 4 courses high and 2 courses wide (48cm). Constructed out of unmodified cobbles. The average cobble is 24 x 24 x 13cm. From the SE corner GANYMEDE is encountered at 54cm and MACBETH 203cm on DLM.

TYBALT is the basal wall to structure 30. TYBALT is 550cm long and 99cm at its highest point where it attaches to LYSANDER and the rest of the summit and 70cm high where it joins with OCTAVIUS, LOED CAPULET and the surface formed by these and BENEDET. In the ~~SE~~ western segment TYBALT is 1 course thick and 6 courses high and makes an ~~outer~~ inner A corner with TIW of structure 29. Here the width of the wall is 25cm. In the Eastern side TYBALT corners outwardly with DLM and is 6 courses wide and 7 courses high. Width of TYBALT is 155cm. This is area where TYBALT acts as back wall to summit structure. Mainly unmodified cobblestone with mud mortar construction. 4 artificially faced ~~concrete~~ ^{cobbles and} 6 pieces of limestone. Average sized cobble is larger in east than the west. Average in west is 20 x 24 x 11cm. in east it is 30 x 30 x 15. Area of tumble from TYBALT off back of structure is 200cm south, this is where tumble was thickest.

OCTAVIUS is to the west of BRUTUS. OCTAVIUS is 240cm long and 50cm high at highest point. May not be an accurate height because a tree is in it. Height that can be sure about is 17cm. OCTAVIUS meets with TYBALT in the SOUTH and squares off in the North. OCTAVIUS is one course high (unclear # of courses cause of tree) and two courses wide. OCTAVIUS is built 13cm east of ~~the~~ Western edge of LORD CAPULET. OCTAVIUS is Chinked into place and is held together by MUD. Constructed of unmodified cobbles. Average size of Cobble is $25 \times 20 \times 10$ cm.

LORD CAPULET is the western feature, probably a basal feature. It meets up with TYBALT (who continues further west) in the South and corners with BENEDICT in the North. 450cm long and depth can't be he got. Constructed of mud mortar and non-faced cobbles. Average size cobble $28 \times 18 \times 6$ cm.

Structure 29.

HENGUNGAWGAP is a step-like extension coming off of FRIDDA to the North of Structure 29. HENGUNGAWGAP has three sides, excluding the one that is made up by FRIDDA. Those sides measure NE-SE 85cm, NE-NW 115cm, NW-SW 93cm. The North & East sides are one course thick and one course high, the western side is at least two course high and two courses thick. The middle was filled with sherd rich soil. Width of North 28cm, E 27cm, W 35cm. Northern wall constructed of cut blocks of tuff(?) and limestone size of these is $45 \times 31 \times 5$ cm, Western side is two courses of unmodified cobble, average size being $20 \times 17 \times 3$ cm, east side is constructed by two large unmodified cobbles on the north, & south side of a smaller one. Sizes of cobbles $42 \times 32 \times 10$, $6 \times 12 \times 4$, $4 \times 28 \times 6$. Chinked into place in East.

AP-00-25-94

FRIDDA is 388cm and 80cm high. She is one course (possibly two courses) thick and one course high. Made of unmodified cobble. Earliest among constructions, FREY is built on to p of her, nothing but dirt underneath. Corner to east not connected to any feature. Corner to west with ABEL. Average cobble $25 \times N/A \times 11$ cm.

ABEL is 80cm long when it disappears under dispair. ABEL is two courses wide and corners with FRIDDA to make a delineate a kind of basal platform from the earliest version of 29 which was still visible in later versions because of additions to it. Creating rooms average cobble is $23 \times 18 \times N/A$. unmodified cobble

FREY is 290cm and 76cm deep. Approx two or three courses wide depending on size of cobbles. Made of unmodified cobbles. Width is 70 cm, average cobble is $22 \times 20 \times 10$. Chinked into place. Southern face built on shreds/dirt fill. Northern face built on both FRIDDA and MIDGARD SERPANT. Corners on east by itself and indents 105 cm, on west corners with dream. 31 cm over MS. 58 cm on sail and 214 cm on FRIDDA. Nothing on FRIDDA for 48 cm. NAHALLA & DELIGHT are attached to FREY's backside.

DREAM 8cm long and 12cm deep 2 courses wide & one course deep, One cut cobble and one limestone, the rest are ^{not} artificially faced cobbles. Indents 32 cm to reach ROSE WALKER corners with FREY in the North. Average $20 \times 25 \times 9$

ROSE WALKER is 192cm long and 18cm deep. ROSE WALKER disappears under GRENDE. She is one course thick and three course wide 60cm wide. unmodified cobble average size $33 \times 40 \times 9$ cm. Chinked connects to DREAM & DELIGHT in North and

for done fuched up

DELIGHT is 220 cm long and 15 cm high. One course high three courses thick. Her west side is part of dream. In the east she corners on herself, she's built on top of VALLHALLA. Unmodified cobble $28 \times 23 \times 12$. Attached to FRIIDA in North, ROSE WALKER on west and VALLHALLA to east. Different orientation on VALLHALLA. width of DELIGHT is 97.



VALLHALLA is 120 cm long and 20 cm high, three courses 61 cm wide and one course deep. Built above NEIFLEHEIM and most likely (not clear but suspected) extends to ~~FRIDA~~ FRIDA. AVERAGE size cobble $22 \text{ cm} \times 18 \text{ cm} \times 12 \text{ cm}$. unmodified one or two larger stone. One limestone.

19 - FORETHOUGHT is 88 cm long and 10 cm high, one course high and two courses wide (33 cm). Built partially on ROSE WALKER and FROST GIANT. FORETHOUGHT frames a small staircase. AVE STONE $18 \times 15 \times 8$ unmodified cobble one limestone.

20 - FROST GIANT is 75 cm long, 9 cm high, & 32 wide one course high and one course wide. Built on pebble/dirt fill. Unmodified cobble, one limestone. Connects to RAGNOROK on South and FORETHOUGHT at North. GRENDE is built on top of it. Bottom stair.

21 - GRENDE is 110 cm long, 30 cm high and 33 cm wide. Average rock is $29 \times 29 \times 4$ cm. unmodified cobble. Part of small staircase. Attaches to FORETHOUGHT & RAGGIE, MATHEW connects to east, above FROST GIANT. Some chinking stones. Height measurement includes what it's on.

22 - MATHEW is 85 cm \times 43 cm. Constructed of small pebble and dirt fill with a $33 \times 39 \times 9$ cornerstone. North of RAG, who he attaches to and west of GRENDE. ~~End of~~

DISPAIR is 395 cm long before disappearing into base of excavation. Depth can't get either. REE growing through it destroyed the visible courses of height. Three courses wide. 73 cm wide. constructed of mud mortar and unmodified cobbles. Average size is $25 \times 25 \times 13$. BUILT above ABEL connects to RAGNOROK and continues back as RAGNOROK's corner. The northern segment is falling away from RAGNOROK suggesting that RAG's corner was constructed separately from the rest of DISPAIR.

DEATH is a one course wide, ~~one~~ two-course high projection located 111 cm South of North of DISPAIR. Projected toward east. unmodified cobble and mud. 16 cm long 32 wide. Depth not attainable. Average size cobble is $25 \times 28 \times 10$.

DESTRUCTION is 152 cm, faces east, only one visible course both wide and high. Unmodified cobble. size of cobble $34 \times 18 \times 8$ ATTACHES to NEIFLEHEIM in North and FREY to South.

NEIFLEHEIM is 290 cm long where visible disappears under raised fill area to east and disintegrates into only the Northern face near VAHALLA. Depth is 30 cm. Three courses tall and three courses wide. Unmodified cobble and mud. width is 71 cm. Orientation different from rest of 29. Probably from earlier construction. Connects to Fallstaff in west.

REGARD & BEOWOLF Built from same depth but continues higher. Portion of BEOWOLF over NEIFLEHEIM. Average cobble $20 \times 20 \times 8$ cm.

FALSTAFF is 200 cm feature to east of structure. Probably fill surface to connect 30 to 29. One course high, 4 courses wide (73 cm) with A, B, & V form storage area for jars unmodified cobble construction. Average $18 \times 14 \times 7$ cm. Storage room dimensions

| | N-SE | N-SW | NE-W | SE-W |
|------------|------|------|------|------|
| Dimensions | 100 | 100 | 130 | 115 |

BEOWULF is 137 cm long NE-SE, 85 cm NE-NW, and 131 cm long NW-SW. Three courses wide (possibly four but unclear) and 5 course + high with a height of 64 cm. unmodified cobble & mud construction. AVERAGE cobble size is 15 x 26 x 6. Built with rear attached to RAG and above NEIFLEHEIM. KRAKEN extends from it on west. BUILT on dirt fill ~~in~~ North over NEIFLEHEIM.

KRAKEN is a small extension to west of BEOWULF that attaches to the FRONT of RAG. Uncertain as to amount of courses in height or width. Northern most segment two courses. Length 52 cm depth possibly 3 cm. Unmodified cobble.

RAGNOROK is 620 cm long and 63 cm deep at deepest point. Base was reached at NE in ARGARD which is a part of RAGNOROK and is lumped together for descriptive purposes. Northern face of summit platform. Unmodified cobble and mud construction. 6 courses high. Average Rock is 28 x 25 x 14 Corners with ODIN to East and DISPAIR at the west.

ODIN/TIW is the eastern wall of structure 29. It connects to FALSTAFF and TYBALT as well as cornering with RAGNOROK. TIW portion is not completely excavated but it is projected that TIW corners with LOKI. ODIN/TIW is 280 cm long and 60 cm high, part of the summit platform and 6 courses high and chinked between courses. Unmodified cobble and mud construction. AVERAGE cobble size is 20 x 26 x 18.

DWARF is 190 cm long, 4 courses wide, ^{or two} one course and 19 cm high. ~~width~~ width in cm is 62. Unmodified cobble mud construction built on a dirt layer above TIW/ODIN. Height equal to height on ODIN portion of ODIN/TIW. Slight terrace effect at ~~rear~~ rear of 29 by TIW the DWARF then DESIRE. AVERAGE COBBLE is 18 x 20 x 7.

DESIRE is a 125 cm long construction built on the summit above DWARF. DESIRE appears to be an eastern wall to a rear Summit room. Desire is two courses wide (48 cm) and 5 courses high (40 cm). She is attached to HOB and would be attached to LOKI the rear basal wall of Structure 29 but LOKI is pulling away from rest of structure 29. Constructed out of mud and unmodified cobbles chinked into place at the base, average cobble size is $14 \times 19 \times 5$.

ONLY A small portion of HOB was found because the summit of St. 29 has two tree stumps going through it HOB is 125 cm long and five courses high (40 cm). Can't see width part of unexcavated portion of summit. Corners with DESIRE on east, non modified cobble and mud construction. AVERAGE size is $21 \times 17 \times 7$.

LOKI is the basal wall. Not all of LOKI is excavated only 103 cm are visible. LOKI is 150^{+} cm wide. Number of courses of width difficult to tell because of decay of wall. LOKI is 110 cm deep or 5 courses. Non-modified cobble construction with mud mortar. Probably connects with DISPAIR, DESIRE, DWARF and T.W. AVERAGE COBBLE is $26 \times 20 \times 8$ cm.

MIDGARD SERPANT is 273 cm long and 18 cm deep only one course high, three courses wide (56 cm) unmodified cobble/mud construction average cobble is $35 \times 30 \times 12$. under FRIDDA, connects on east with BENEDICT, DEMETRIUS and LORD CAPULET.

AFTERTHOUGHT is 300 cm long and 15 cm deep one course wide and one course deep. unmodified cobble/mud construction (one limestone at NW corner) Average $22 \times 34 \times 7$. connects with MIDGARD SERPANT in south. corners with DESTINY and ~~DEERE~~ UNITY KINKAIO.

DESTINY is 190 cm long, depth of 15 cm at corner with AFTERTHOUGHT. two courses wide. average cobble is $20 \times 23 \times$ N/A. cobble/mud no artificial faces. ^{corners} connects with DOGGIE AFTERTHOUGHT on plane with BENEDICT but line faces opposite direction. only 81 cm of MIDGARD SERPANT NOT BEHIND DESTINY.

DOGGIE is 298 cm long. Line is not very clear. Possibly 2 courses wide, 4 limestone, rest unmodified cobbles. AVERAGE size $35 \times 20 \times 12$. Connects with UNITY and DESTINY. TO EAST A LAYER OF FILL.

AP-00-25-99

BEATRICE N-Ø Post Holes

Ø at W
HERO

12Ø cm

20Ø cm

34Ø cm

20Ø cm

POSSIBLE FILL LAYER AN EXTENSION OF PLATFORM OR WALKWAY

~~UNIT IS 167 cm long. Depth only at corner with AFTERTHOUGHT~~

~~UNIT~~ FILL HAS NO REAL FORM OR SHAPE. EMPTY OF FILL BETWEEN A GOOD PORTION OF BEATRICE & REST OF FILL UNIT. 77 cm x 13Ø cm UNIT is 167 cm long. Depth unsure. 3 courses thick possibly. corners with AFTERTHOUGHT and dogleg. Cobble & limestone unmodified with mud mortar. size of cobble 12 x 15 x N/A.

CAIN is only exposed for 65 cm with a depth of — cm.

faces South. ~~Top~~ South of CAIN's face and west of AFTERTHOUGHT is a 37 x 26 x 9 groundstone doughnut. The center has a diameter of 9 cm. AVERAGE COBBLE in CAIN is 19 x 2Ø x 5.

POSSIBLY ANOTHER STONE with ground out depression across from the one in front of CAIN 136 cm east. DIAMETER OF THIS INDENTION is 11 cm. CAIN is one course high one course wide.

AP-φφ-25-10φ

| NAME: | LENGTH | POSITION (N, S, E, W, M) | LOCATION | TOP cm | BOTTOM cm | ORIENTATION | STRUCTURE |
|---------------------------|-------------------|--------------------------|----------|-----------|--------------|-------------|-----------|
| LEONARDO | 144 cm | NE | 10 cm | 61 cm | 76 cm | 90° E | 3φ |
| | | NW | 140 cm | 63 cm | 71 cm | 90° E | 3φ |
| JULIUS CAESAR | 37 cm | NW | 36 cm | 30 cm | 62 cm | 100° SE | 3φ |
| | | M | 22 cm | 45 cm | N/A | 95° SE | 3φ |
| | | NE | 20 cm | 40 cm | 65 cm | 110° SE | 3φ |
| DEMETRIUS | | | | | | | |
| () | 380 cm | SE | 25 cm | 50 cm | N/A | 90° | 3φ |
| LYSANDER | 315 cm | M | 200 cm | 29 cm | N/A | 100° | 3φ |
| | | SW | 335 cm | 6 cm | N/A | 110° | 3φ |
| | | SE | 180 cm | 30 cm | NA | 0° | 3φ |
| OPHELIA | 210 cm | NE | 10 cm | 36 cm | 50 cm | 0° | 3φ |
| | | | | | | | |
| | Return 28 cm | ABOVE IAGO | | | | | |
| VIOLETA | 668 cm | NE | 25 cm | 0 cm | N/A | 50° NE | Sub-2 |
| | | M | 270 cm | 33 cm | N/A | 10° NE | Sub-2 |
| | | SE | 590 cm | 31 cm | 72 cm | 0° N | Sub-2 |
| IAGO | 423 cm | NE | 30 cm | 2.5 cm | 14 cm | 20° NE | Sub-2-1 |
| | | M | 210 cm | 14 cm | 28 cm | 0° N | Sub-2-1 |
| | | SE | 400 cm | 17 cm | 37 cm | 20° NE | Sub-2-1 |
| ROBIN GOODFELLOW | | NE | 20 cm | 0 cm | N/A | 100° SE | Sub-2 |
| | 265 cm | M | 130 cm | 1 cm | N/A | 95° SE | Sub-2 |
| | | NW | 250 cm | 31 cm | 56 cm | 90° E | Sub-2 |
| MORPHEUS | 110 cm | NW | 110 cm | 13 cm | N/A | 50° NE | Str 35 |
| (visible 43 cm at bottom) | | SW | 20 cm | 12 cm | N/A | 50° NE | Str 35 |
| HERO | 255 cm | NE | 10 cm | 5 cm | 25 1/2 cm | 100° SE | Sub-2-1 |
| | | M | 140 cm | 1/2 cm | 50 cm | 110° SE | Sub-2-1 |
| | | NW | 240 cm | -1 cm | N/A | 100° SE | Sub-2-1 |
| (INNER) | | SM | 140 cm | 0 cm | 33 cm | 95° SE | Sub-2-1 |
| BEATRICE | 397 cm | NW | 390 cm | 4 cm | N/A | 10° NE | Sub-2-1 |
| | | M | 210 cm | 6 cm | 53 1/2 cm | 10° NE | Sub-2-1 |
| | | SW | 10 cm | 19 cm | 37 cm | 100° NE | Sub-2-1 |
| (INNER) | | ME | 210 cm | 9 cm | 43 cm | 4° NE | Sub-2-1 |

AP-00-25-101

| | Height | N, S, E, W, M | Location | Top | Bottom | Orientation | Structure |
|-------------------------------|--------|---------------|----------|--------------------|-----------|-------------|-----------|
| UTHELLO | 265cm | SE | 30cm | 11cm | N/A | 85° NE | Sub 2-1 |
| | | m | 150cm | 5cm | 46cm | 90° E | Sub 2-1 |
| | | SW | 250cm | 20cm | 40cm | 100° SE | Sub 2-1 |
| (INNER) | | NM | 150cm | 15cm | 51cm | 75° NE | Sub 2-1 |
| KATE | 245cm | NE | 30cm | 1cm | N/A | 0° NE | Sub 2 |
| | | SE | 170cm | 25cm | 37cm | 2° NE | Sub 2 |
| ORBERON | ~240cm | SW | 20cm | 45cm | 63cm | 5° NE | Sub 2-2 |
| | | NW | 200cm | 25cm | 48cm | 10° NE | Sub 2-2 |
| TITIANA | ~230cm | NW | 215cm | 49cm | 65cm | 10° NE | Sub 2-3 |
| | | m | 115cm | 57cm | 71cm | 5° NE | Sub 2-3 |
| | | SW | 10cm | 63cm | 75cm | 10° NE | Sub 2-3 |
| IMAGEN | 220cm | SE | 200cm | 44cm | 60cm | 90° E | Sub 2 |
| | | SW | 10cm | 31cm | 41cm | 95° SE | Sub 2 |
| Datum @ 21cm Above HERA | | | | | | | |
| FATES | 70cm | SE | 70cm | 162cm | 170cm | 360° | St 31 |
| | | SW | 0cm | 153cm | 165cm | 360° | St 31 |
| NESTIA | 253cm | NE | 220cm | 154cm | 167cm | 110° SE | St 31 |
| disappears into excavation | | NW | 60cm | 130cm | 148cm | 120° SE | St 31 |
| ATHENA | 265cm | NE | 10cm | 151cm | 165cm | 105° SE | St 31 |
| | | NE | 260cm | 145cm | 157cm | 105° SE | St 3 |
| APOLLO | 165 | NE | 100cm | 137cm | 141cm | 105° SE | St 31 |
| | | NW | 10cm | 119cm | 141cm | 105° SE | St 31 |
| ARTEMIS | 370cm | NW | 0cm | 94cm | 115cm | 110° SE | St 31 |
| disappears into excavation | | NE | 360cm | 96cm | 137 1/2cm | 108° SE | St 31 |
| MEBE | 335cm | NE | 300cm | 36cm | 52cm | 105° SE | St 31 |
| INDENT 1 → | M | | 150cm | 33cm | 53cm | 105° SE | St 31 |
| INDENT 2 → | NW | | 0cm | 43cm | 61 1/2cm | 105° SE | St 31 |
| HERA | 400cm | NE | 30cm | 42cm | 67cm | 105° SE | St 31 |
| | | NE | 400cm | 16cm (off by 35cm) | 67 1/2cm | 105° SE | St 31 |
| HERAKLES (Box) | | | | | | | |
| | 65cm | SW-NW | 40cm | 27cm | 57cm | 15° NE | St 31 |
| | 95cm | NE-NW | 40cm | 22cm | 56cm | 120° SE | St 31 |
| | 67cm | NE-SE | 50cm | 40cm | 61cm | 20° NE | St 31 |

AP-00-25-102

| Name: | Length: | Location: | Datum | Location: | Top: | Bottom: | Orientation: | Structure: |
|--|---------|-----------|--------|-----------|-----------|---------|--------------|------------|
| ARES | 435 cm | NE | 315 cm | 55 cm | 87 cm | N/A | St 31 | |
| (Stone Floor) | | m | 220 cm | 55 cm | 83 cm | N/A | St 31 | |
| CHARON: | 302 cm | SE | 200 cm | 40 cm | N/A | 100° SE | St 31 | |
| | | SW | 45 cm | 31 cm | N/A | 110° SE | St 31 | |
| HADES: | 302 cm | SW | 40 cm | 36 cm | 94 cm | 105° SE | St 31 | |
| | | SE | 250 cm | 49 cm | 88 cm | 100° SE | St 31 | |
| Face with POSITION: | 79 cm | m | 60 cm | 76 cm | 95 cm | 110° SE | St 31 | |
| HERMES: | 210 cm | SE | 180 cm | 105 cm | 148 cm | 100° SE | St 31 | |
| disappears into excavation | | SW | 200 cm | 100 cm | N/A | 105° SE | St 31 | |
| DEMETER: | 95 cm | SE | 70 cm | 148 cm | 209 cm | 110° SE | St 31 | |
| disappears into excavation | | SW | 200 cm | 150 cm | 200 cm | 110° SE | St 31 | |
| ZEUS: | 500 cm | SW | 480 cm | 95 cm | 119 cm | 10° NE | St 31 | |
| disappears into excavation | | NW | 40 cm | 74 cm | 104 cm | 20° NE | St 31 | |
| | | m | 250 cm | 64 cm | 97 cm | 70° NE | St 31 | |
| DIONYSUS: | 120 cm | NE | 30 cm | 134 cm | 159 cm | 30° NE | St 31 | |
| disappears into excavation | | SE | 100 cm | 136 cm | 160 cm | 30° NE | St 31 | |
| HERPHESTOS: | 105 cm | NE | 25 cm | 91 cm | 130 cm | 0° N | St 31 | |
| disappears into excavation | | SE | 75 cm | 100 cm | 130 cm | 0° N | St 31 | |
| GANNAMODE: | 183 cm | M | 113 cm | 107 cm | 125 cm | N/A | St 31 | |
| DATUM @ 15 cm ABOVE GROUND SURFACE ON WESTERN VNE EXCAVATED SUMMIT | | | | | | | | |
| LORD CAPOLET | 450 cm | SW | 430 cm | 84 cm | N/A | 355° NW | St 30 | |
| * | | NW | 40 cm | 25 cm* | N/A | 355° NW | St 30 | |
| FALSTAFF | 260 cm | NW | 230 cm | 60 cm | 100 cm | 0° N | St 30 | |
| | | SW | 10 cm | 81 cm | 101 cm | 350° NW | St 30 | |
| DELBRIUM | 100 cm | NW | 75 cm | 109 cm | 40 cm | 85° NE | St 30 | |
| MIDGARD SERPANT | | NW | 0 cm | 70 cm | 87 1/2 cm | 75° NE | St 29 | |
| | 273 cm | m | 100 cm | 71 cm | 101 cm | 80° NE | St 29 | |
| DESTRUCTION | 252 cm | m | 85 cm | 92 cm | N/A | 353° NW | St 29 | |
| NEIFLEHIN | 290 cm | NW | 70 cm | 98 cm | 129 cm | 110° SE | St 29 | |
| disappears into excavation | | SE | 200 cm | 94 cm | 134 cm | 100° SE | St 29 | |

AP-00-25-103

| NAME: | LENGTH: | NEWM | DATUM | LOCATION | TOP | BOTTOM | ORIENTATION | STRUCTURE |
|-------------------|---------|-------|-------|----------|------|--------|-------------|-----------|
| GINGUNGA | 85cm | NE-SE | 50cm | | 91cm | 106cm | 0°N | St 29 |
| | 105cm | NE-NW | 80cm | | 80cm | 88cm | 88°NE | St 29 |
| | 93cm | NW-SW | 40cm | | 81cm | 116cm | 350°NW | St 29 |
| FRIDA | 388cm | NW | 0cm | | 75cm | N/A | 80°NE | St 29 |
| | | NE | 370cm | | 82cm | 101cm | 80°NE | St 29 |
| FREY | 290cm | NE | 10cm | | 68cm | 82cm | 80°NE | St 29 |
| | | NW | 290cm | | 80cm | 96cm | 80°NE | St 29 |
| DREAM: | 109cm | M | 68cm | | 76cm | 88cm | 0°N | St 29 |
| DELIGHT: | 220cm | NW | 0cm | | 78cm | 89cm | 85°NE | St 29 |
| | | NE | 210cm | | 71cm | 88cm | 85°NE | St 29 |
| VALLHALLA: | 120cm | NE | 20cm | | 86cm | 103cm | 350°NW | St 29 |
| | | SE | 120cm | | 75cm | 100cm | 350°NW | St 29 |
| ROSE WALKER: | 92cm | SE | 10cm | | 47cm | N/A | 0°N | St 29 |
| | | NE | 180cm | | 72cm | 90cm | 0°N | St 29 |
| ARIEL: | 88cm | M | 40cm | | 80cm | N/A | 350°NW | St 29 |
| DISPAIR: | 345cm | SW | 310cm | | 35cm | N/A | 350°NW | St 29 |
| | | NW | 10cm | | 80cm | 98cm | 355°NW | St 29 |
| NOT SURG OF BASE | | | | | | | | |
| DEATH: | 120cm | M | 75cm | | 65cm | 90cm | 80°NE | St 29 |
| RETHOUGHT: | 88cm | NW | 80cm | | 57cm | 76cm | 85°NE | St 29 |
| | | NE | 10cm | | 66cm | 77cm | 85°NE | St 29 |
| FROST GRANT: | 75cm | NE | 10cm | | 74cm | 83cm | 0°N | St 29 |
| | | SE | 60cm | | 74cm | 83cm | 0°N | St 29 |
| GRINDICE: | 110cm | SE | 10cm | | 47cm | 68cm | 10°NE | St 29 |
| | | NW | 80cm | | 50cm | 80cm | 10°NE | St 29 |
| RAGNOROK/ | 620cm | NW | 580cm | | 53cm | 118cm | 85°NE | St 29 |
| ARGARD | | M | 300cm | | 40cm | 110cm | 90°E | St 29 |
| KRAKEN | | NE | 10cm | | 59cm | 87cm | 85°NE | St 29 |
| | | | | | | | not BASE | |
| BEOULF | 137cm | SE-NE | 60cm | | 56cm | 113cm | 0°N | St 29 |
| | 89cm | NE-NW | 45cm | | 63cm | 96cm | 90°E | St 29 |
| | 131cm | SW-NW | 70cm | | 56cm | N/A | 0°N | St 29 |
| MATHEW | 85cm | N-S | 60cm | | 60cm | 89cm | 355°NW | St 29 |
| KRAKEN | 52cm | M | 30cm | | 79cm | 82cm | 78°NE | St 29 |

AP-00-25-104

| NAME: | LENGTH: | NSEWM | DATUM LOCATION: | TOP | BOTTOM | ORIENTATION | STRUCTURE |
|----------------------------|---------|-------|------------------|-------|--------|------------------------|-----------|
| ODIN: | 160cm | NE | 10cm | 72cm | N/A | 0°N | 29 |
| | | SE | 120cm | 58cm | N/A | 0°N | 29 |
| TIW: | 120cm | NE | 10cm | 85cm | 143cm | 10° NE | 29 |
| Disappears into excavation | | SE | 100cm | 85cm | 139cm | 350° NW | 29 |
| DWARF: | 140cm | NE | 20cm | 67cm | 85cm | 0°N | 29 |
| Disappears into excavation | | SE | 180cm | 80cm | N/A | 0°N | 29 |
| DESIRE: | 345cm | NE | 70cm | 46cm | N/A | 0°N | 29 |
| | | SE | 250cm | 46cm | 87cm | 0°N | 29 |
| HOB: | 125cm | M | 80cm | 36cm | 80cm | 90°E | 29 |
| THOR: | 80cm | M | 40cm | 64cm | 73cm | N/A 100° SE | 29 |
| LOKI: | 103cm | SE | 35 cm | 105cm | 215cm | 90°E | 29 |
| Disappears into excavation | | SW | 90cm | 105cm | 215cm | 90°E | 29 |

* DATUM POINT @ 20cm ABOVE

| | | | | | | |
|---------------|------------------|--------------------|------|------|-------|--------|
| AFTERTHOUGHT | NW | 300cm | 53cm | 64cm | 0°N | 29 Sub |
| 300cm | SW | 30cm | 48cm | 63cm | 10°N | 29 Sub |
| DESTINY | SW | 0cm | 48cm | 63cm | 90°E | 29 Sub |
| | SE | 160cm | 35 | N/A | 90°E | 29 Sub |
| UNITY KINFOLD | NE | 10cm cm | 48cm | N/A | 90°E | 29 Sub |
| 167 | cm NW | 160cm | 55cm | N/A | 90°E | 29 Sub |
| DOGGIE | NE | 0cm | 40cm | N/A | 0°N | 29 Sub |
| | SE | 280cm | 50cm | N/A | 0°N | 29 Sub |
| CATIN | NE | 10cm | 33cm | 48cm | 85°NE | 29 Sub |

DISAPPEARS INTO
EXCAVATION

Width of
HERO 51cm
BEATRICE 85 1/2 cm

— IAGO 64cm
— ROBIN GOODFELLOW 30cm
— OYNELLO 100cm

where WAS RIDG ON EACH OTHER
HERO 47cm OVER OBERON
~~OBERON OVER DESTINY~~

OTHELLO 69cm OVER OBERON

ONLY 15cm of TITIANA IS EXPOSED

VISIBLE WIDTH of

OBERON 69cm

TITIANA 15cm

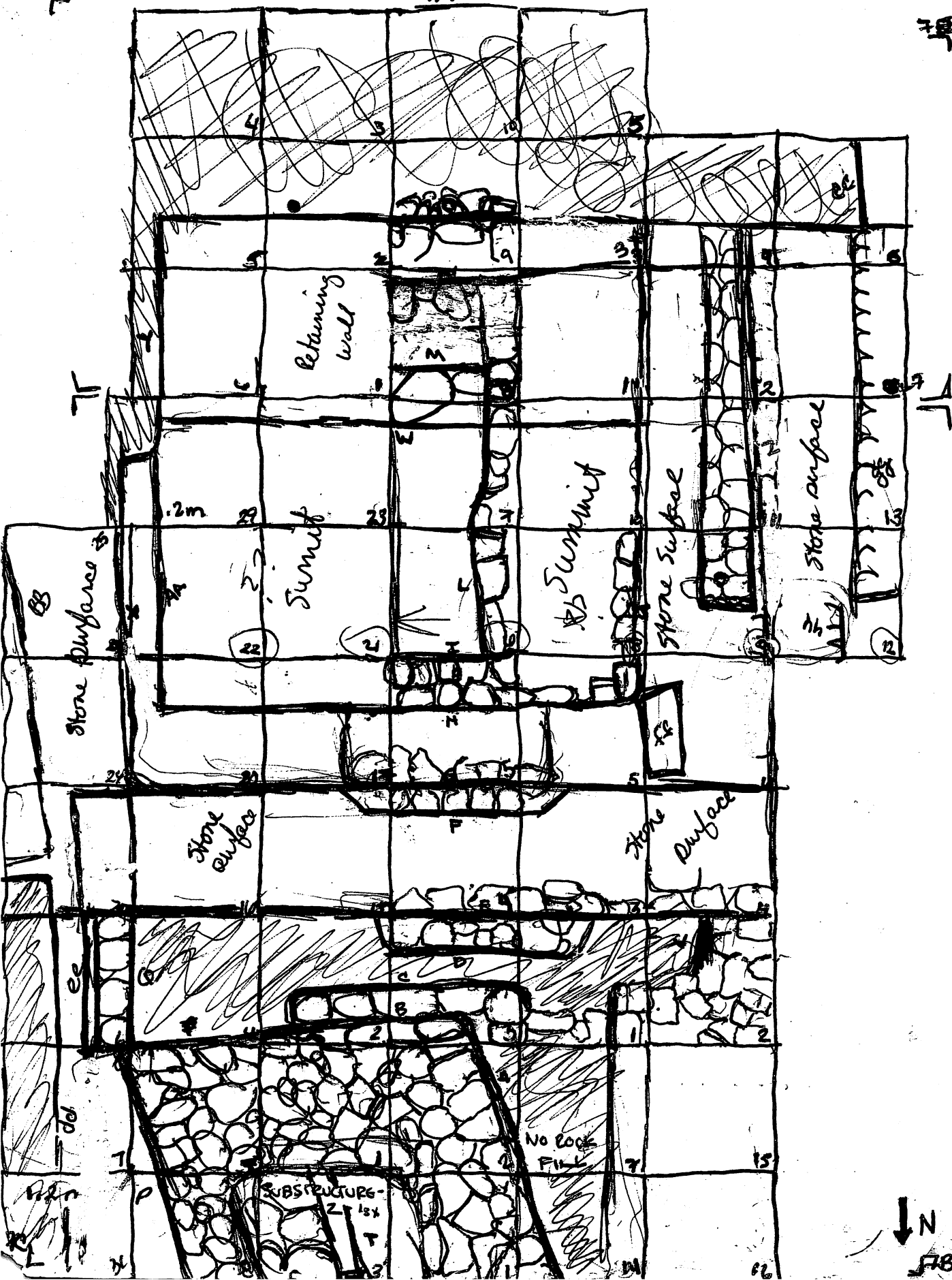
AP-00-25-105

Datum 24cm from top of LYSANDER

| NAME: | LENGTH: | POSITION ON FEATURE M, N, S, E, W | LOCATION | TOP | BOTTOM | ORIENTATION | STRUCTURE |
|------------------------------------|---------|--------------------------------------|----------|----------|----------|-------------|-----------|
| BRUTUS: | 363cm | NW | 38cm | 28cm | 43cm | 0° N | 30 |
| | | M | 120cm | 14 1/2cm | 46cm | 0° N | 30 |
| | | SW | 318cm | 31cm | 54cm | 0° N | 30 |
| NAMELESS: | 95cm | NW | 20cm | 39cm | 68cm | 352° NW | 30 |
| | | SW | 80cm | 32cm | 57cm | 352° NW | 30 |
| OCTAVIUS: | 240cm | NW | 15cm | 42cm | 59 1/2cm | 10° NE | 30 |
| | | M | 90cm | 7cm | 60cm | 10° NE | 30 |
| | | SW | 240cm | 60cm | 70cm | 10° NE | 30 |
| TYBALT: | 550cm | SW | 550cm | 58cm | 127cm | 100° SE | 30 |
| | | M | 360cm | 36cm | 135cm | 100° SE | 30 |
| | | SE | 0cm | 116cm | 143cm | 100° SE | 30 |
| DUNCAN/MERCUCIO/ LORD MONTAGUE: | 410cm | NE | 400cm | 57cm | N/A | 0° N | 30 |
| | | M | 190cm | 58cm | 128cm | 0° N | 30 |
| | | SE | 10cm | 116cm | 152cm | 0° N | 30 |
| MACBETH: | 237cm | SE | 230cm | 58cm | 90cm | 4° NE | 30 |
| | | M | 130cm | 48cm | 83cm | 4° NE | |
| | | NE | 20cm | 64cm | 100cm | 4° NE | |
| JULIET: | 225cm | SE | 225cm | 88cm | 99cm | 0° N | 30 |
| | | NE | 60cm | 89cm | 100cm | 0° N | 30 |
| CLAUDIO WIDER : | 300cm | NE | 300cm | 63cm | 82cm | 90° E | 30 |
| | | M | 160cm | 44cm | 70cm | 90° E | 30 |
| | | NW | 0cm | 62cm | 72cm | 90° E | 30 |
| BENEDICT: | 550cm | NE | 550cm | 69cm | 86cm | 220° SW | 30 |
| | | M | 290cm | 64cm | 83cm | 220° SW | 30 |
| | | NW | 50cm | 71cm | 85cm | 280° NW | 30 |
| ROMEO: | 290cm | NW | 10cm | 74cm | 94cm | 110° SE | 30 |
| | | M | 160cm | 93cm | 105cm | 100° SE | 30 |
| | | NE | 280cm | 85cm | 106cm | 80° NE | 30 |
| DEMONA | 120cm | NW | 20cm | 82cm | 111cm | 0° N | 30 |
| | | SW | 80cm | 90cm | 112cm | 0° N | 30 |

7A

理



SQUARE!

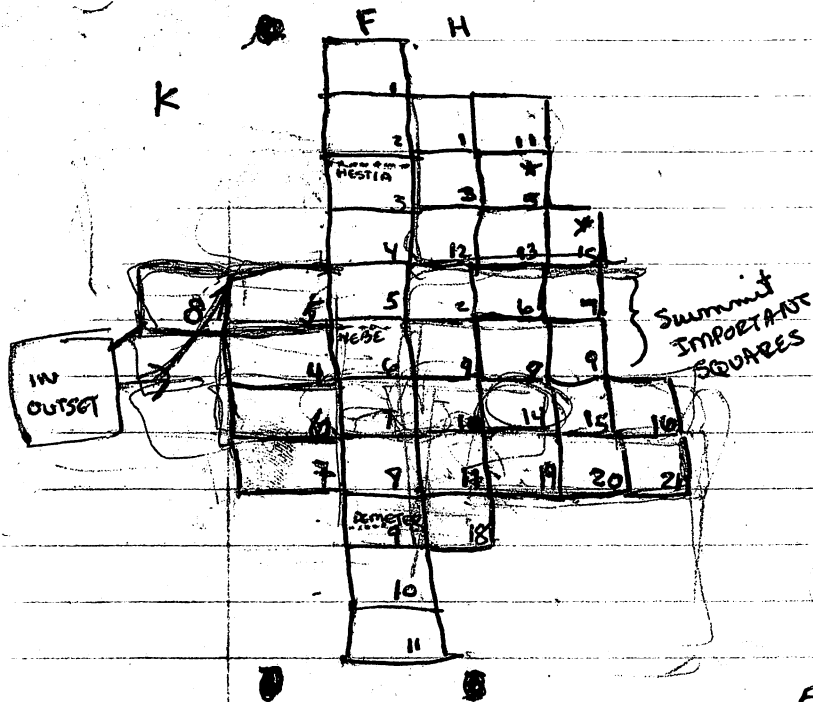
→ AXIAL

HERO

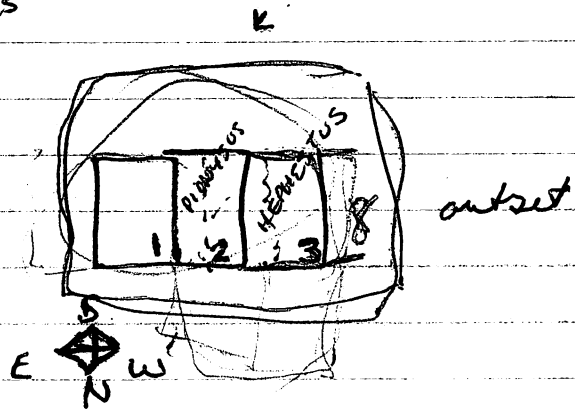
70

- A BEATRICE
- B OTHELLO
- C IMOGEN
- D ROMEO ✓
- E BENEDICT ✓
- F LEONARDO ✓
- G CLAUDIO ✓
- H JULIUS CAESAR ✓
- I RICHARD III
- J BRUTUS ✓
- K OCTAVIUS ✓
- L OPHELIA
- M HAMLET
- N HENRY II
- O TYBALT ✓
- P IAGO
- Q DESDEMONA ✓
- R ROBIN GOODFELLOW
- S NERO
- T OBERON
- U TITIANA
- V DEMETRIUS ✓
- W LYSANDER
- X MACBETH ✓
- Y LORD MONTAGUE ✓
- Z LORD CAPULET
- aa mercurio / DUNCAN ✓
- bb ZEUS
- cc ~~ODIN~~ TIW
- dd VIOLA
- ee JULIET ✓
- ff Nameless ✓
- gg ODIN
- hh-Fallstaff

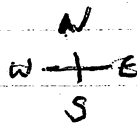
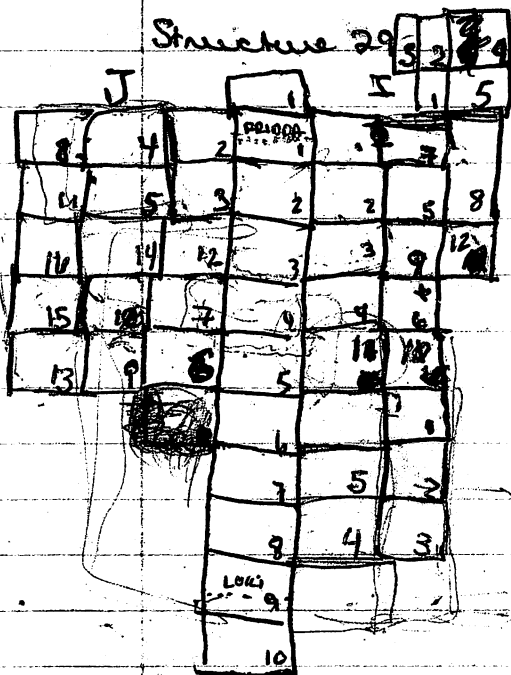
Structure 31



* not full meters squared



Structure 29



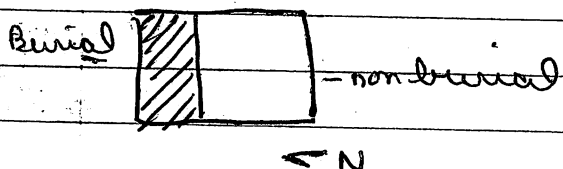
Smeared notes

AP-00-25-51

Bones found underneath shields when shields removed
 The bones that were protruding from the wall are very fragmentary, as he's clearing around the wall are very fragmentary, as he's clearing around tumble to find it they're coming out.

AP-00-25-52

7E/030-50-? in SW corner of square 5 west 9
 finishing the rest of the square not part of Burial
 Most of this layer is comprised of large rocks



AP-00-25-53

Bejaeki deposits under a layer of "tumble"

AP-00-25-111

- 7H/001: Sheds
7H/002: Sheds and chert
7H/003: Sheds, chert, and obsidian
7H/004: Sheds and chert
7H/005: Sheds and obsidian
7H/006: Sheds
7H/007: Sheds
7H/008: Sheds, obsidian, chert, and jade
7H/009: Sheds
7H/010: Sheds and obsidian
7H/011: Sheds and chert
7H/012: Sheds, chert, and obsidian
7H/013: Sheds, chert, and obsidian
7H/014: Sheds chert obsidian & groundstone
7H/015 - Empty
7H/016 - Sheds & chert
7H/017 - Sheds, chert, obsidian, & groundstone
7H/018 - Sheds, chert, obsidian & ~~groundstone~~

AP 00-25-112

| | | |
|-----------------------|----------------------------------|-------------------------|
| Lot 7B/001 | 7B/010 | 7C/001 - chert obsidian |
| Shards | Shards | Shards |
| lithics(?) (obsidian) | | 7C/002 - Shards, chert |
| 7B/002 | 7B/011 | obsidian, greenstone |
| Shards | Shards, obsidian | |
| Chert | 7B/012 | 7C/003 |
| bones | Chert | Shards |
| Obsidian | Shards | Chert |
| | 7B/013 | 7C/004 |
| 7B/003 | obsidian | Shards |
| Shards | 7B/014 | 7C/005 |
| Chert | Shards, Bajareki | Shards |
| | 7B/015 | obsidian |
| 7B/004 | Groundstone | |
| Shards | 7B/016 | |
| 7B/005 | Shards chert obsidian - bajareki | |
| Bajareki | 7B/017 | |
| 7B/006 | obsidian, chert, Shards | |
| Shards | 7B/018 | |
| obsidian | Shards | |
| Chert | 7B/019 | 7B/020 |
| limestone | Shards | 7B/024 |
| 7B/007 | 7B/020 | Shards chert |
| Chert | obsidian | |
| Shards | Shards | |
| obsidian | 7B/021 | |
| 7B/008 | Shards | |
| Shards | Chert | |
| Chert | 7B/022 | |
| 7B/009 | Shards | |
| Chert | Chert | |
| Shard | obsidian | |
| obsidian | 7B/023 | |
| | Shards | |

7B/025

Empty lot

7B/026

Shards/chert

7B/027

Chert Shards

7B/028

Shards

7B/029

Shards

7B/030

Shards chert

7B/031

Shards

Obsidian

7B/032

Shards

Obsidian

7B/033

Shards & obsidian

7B/034

Shards, chert, obsidian

7B/035

Shards bone chert

Obsidian

7B/036

Chert, Shards, obsidian

7B/037

Shards & lithics

7B/038 Shards lithics

7B/039 Shards

7B/040

Shards chert, obsidian

7B/041 Shards chert

7C/020

Shards, chert,

obsidian

7C/021

Shards, chert

obsidian

bajareki

7C/022

Shards & chert

7C/023

Shards & chert

7C/024

Shards & lithics

7C/024

Shards & chert

7C/025

Shards, chert, obsidian

7B/042

Chert & Shards

7B/043

Chert obsidian

7C/006

chert, shards, obsidian

7C/007

shards chert

Obsidian

7C/008

Shards, obsidian,

chert

7C/009

Shards chert

7C/010

Chert shards

7C/011

Shards chert

7C/012

Shards

7C/013

Shards, chert

groundstone,

obsidian

7C/014

Shards

7C/015

Obsidian chert

Shards

groundstone

7C/016

Chert shards

7C/017

Shards chert

obsidian Bajareki

groundstone

7C/018 Shards lithics

7C/019 Shards obsidian
chert

AP-06-25-114

7C/045 - chert, Shards, Obsidian

7D/004 - Chert, Obsidian, Shards

7E/001 - Chert, Shards, Bajareki, Obsidian

7D/005 - Greenstone, chert, obsidian, shards

7C/046 - Shards, chert, obsidian

7D/006 - Shards Obsidian

7C/048 - Shards

7C/049 - chert, shards, obsidian, greenstone

7D/008 - Shards, chert, obsidian, bajareki

7E/003 - Shards, greenstone, bajareki

7E/004 - Shards, chert, obsidian

7D/009 - Shards chert obsidian

7C/050 - Shards chert obsidian

7C/051 Shards

7E/005 - Shards, chert

7E/006 - Empty

7D/010 Shards, chert

7D/011 - Shards, chert

7E/007 - Obsidian

7C/053 - Shards obsidian

7D/012 - Shards chert, obsidian

7C/052 - chert, Shards, obsidian

7C/054 - Shards lithics

7C/055 - Shards & chert

7C/056 Shards

7C/057 - Shards lithics

7E/008 - Shards

7D/013 - Shards lithics

7C/058 - chert obsidian, Shards, worked bone

7C/058 - chert & obsidian & shards

7C/059 - Shards lithics

7C/060 - Shards

7D/011 - Bajareki, Shards, Obsidian

7E/010 - Shards, Chert

7E/011 - Bajareki

7E/012 - chert, obsidian shards

7E/013 - Bajareki, Shards

7C/061 - Shards, chert, obsidian

7C/062 - Shards, chert, Obsidian

7C/064 - Shards, chert, Obsidian

7E/015 - Shards & chert

7C/065 - Shards chert Obsidian

7C/066 - Shards Obsidian

AP-008-25-
115

~~7A/008~~ ~~PROVENANCE (SP?)~~ ~~PLEASE CONTINUE~~

LOT 7A/008

Shards

Chert

7A/009

Shards

7A/010

Shards

7A/011

Shards

Chert (core)

7A/012

Shards, obsidian flakes

7A/013

Shards

7A/014

Shards

7A/015

Shards

7A/016

Shards

Chert blade

7A/017

Shards

7A/018

Shards

obsidian

7A/019

Shards

7A/020

Shards

7A/021

Nothing

7A/022

Shards

7A/023

Shards

Obsidian

Chert

7A/024

Shards

7A/025

shards

7A/026

Shards

Chert

obsidian

AP-68-25-116

7A\68-3

tiestos de ceramica

obsidiana

limestone

IMOGEN is — cm long and — cm high.

OTHELLO is built on top of her. She disappears under DESDEMONA. ONLY 60cm are not covered with OTHELLO constructed out of large unmodified cobbles (one limestone) on surface. Mud cement. Indents 20cm in SE, second to last stone is further south than last stone. Three courses (85cm) wide, one course high. Average size of stone is ~~32~~ 32cm x N/A x 12cm. No visible connections to other features other than those it rests on.

| NAME | LOCATION | DATE | TOP | BOTTOM | ORIENTATION | STR | 31 |
|-----------|----------|--------|-------|--------|-------------|-----|----|
| APHRODITE | NE | 185 cm | 130cm | 56 cm | 10° NE | | |
| 185 cm | SE | 0 cm | 48cm | 86 cm | 0° N | | |

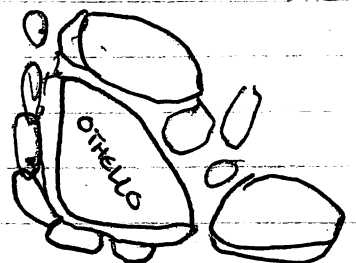
185cm long, 40cm deep x 82cm wide Eastern wall to the bench on summit corners with HERA in NE & CHARON/HADES in SE. 4 courses wide. 4 courses high. mud mortar unmodified cobble (2 limestone)

Average 21 x 20 x 9

| NAME | LOCATION | DATE | TOP | BOTTOM | ORIENTATION | STR | 29 |
|-----------|----------|-------|-------|--------|-------------|-------------|----|
| DEMETRIUS | N | 21cm | 54 cm | 75 cm | 0° N | 57 30/57 29 | |
| | | 46 cm | | | | | |

SMALL SEGMENT (POSSIBLY PART OF DOGGIE) THAT ACTS AS A retaining wall ~~for all things to the left~~ for fill unit to EAST. ONE COURSE HIGH, ONE COURSE WIDE. THINK ITS PART OF DOGGIE because one rock is visibly seen connecting to DESTINY, meets BENEDICT in south, FILL in NORTH. unmodified cobble and mud. completely VISIBLE COBBLE 14 x 42 x 10

| NAME | LOCATION | TOP | BOTTOM | ORIENT | STR | 29 |
|-----------------------------|----------|--------------------|--------|--------|-----|-----|
| PELERIUM | N | 140cm ⁺ | 30cm | 30cm | N/A | 90° |
| unclear if really a feature | | | | | | |



Substructure 2

| Unit | Height | Width | Length | Orientation | Courses | Material | Function |
|------|---------------------|-------|---------------------|-------------|---------|----------|----------|
| 1 | .12-.116m | | 2.30 ⁺ m | | | | |
| 2 | .14-.25m | | 2.40 ⁺ m | | | | |
| 3 | .10-.116m | | 2.26m | | | | |
| 4 | .20-.41m | 1.06m | 2.65m | | | | |
| 5 | .18-.47m | .95m | 3.97m | 10° | | | |
| 6 | .2-.49m | .51m | 2.85m | | | | |
| 7 | .12-.20m | .64m | 4.23m | 20° | | | |
| 8 | .12 .41m | | 6.68m | | | | |
| 9 | .12 .12m | | 2.45m | | | | |
| 10 | .11-.21m | | 2.25m | 0° | | | |
| 11 | .29-.32m | | 1.20m | 0° | | | |
| 12 | .25m | .30m | 2.65m | | | | |
| 13 | .30 ⁺ m | | 1.10 ⁺ m | 5° | | | |

Structure 30

| unit | Height | Width | Length | Orientation | Courses | Material | Function |
|------|-------------------|-------|--------|---------------|---------|----------|----------|
| 1 | .27-.99m | | 5.5m | 100° | | | |
| 2 | .14-.21m | | 5.5m | 220° | | | |
| 3 | .36-.70m | | 4.1m | 0° | | | |
| 4 | | | | | | | |
| 5 | unexcavated depth | | 3.80m | | | | |
| 6 | .25-.32m | | 3.70m | | | | |
| 7 | .23-.36m | | 3.65m | 0° | | | |
| 8 | | | | | | | |
| 9 | .14m | | 2.10m | 0° | | | |
| 10 | .18m | | 1.83m | | | | |
| 11 | .19-.26m | | 3.06m | 90° | | | |
| 12 | .35-.37m | | 2.37m | 40° | | | |
| 13 | .8-.15m | | 1.44m | 90° | | | |
| 14 | .12-.21 | | 2.9m | curved N/A | | | |
| 15 | .10-.53m | | 2.40m | 10° | | | |
| 16 | .25-.29m | | .95m | 352° | | | |

| Unit | Height | Width | Length | Orientation | Courses | Materials | Function |
|------|--------|-------|--------|-------------|---------|-----------|----------|
| 17 | 20-39m | | 2.60m | | | | |
| 18 | 21m | | 1.00m | | | | |
| 19 | | | | | | | |