

Kenyon College

Digital Kenyon: Research, Scholarship, and Creative Exchange

Four Valleys Archive

Anthropology

2000

PVC-016-Lewis-Field Notes-2000

Stacy Lewis

Follow this and additional works at: <https://digital.kenyon.edu/honduras>



Part of the [Archaeological Anthropology Commons](#)

Recommended Citation

Lewis, Stacy, "PVC-016-Lewis-Field Notes-2000" (2000). *Four Valleys Archive*. Paper 28249.
<https://digital.kenyon.edu/honduras/28249>

This Field Notes is brought to you for free and open access by the Anthropology at Digital Kenyon: Research, Scholarship, and Creative Exchange. It has been accepted for inclusion in Four Valleys Archive by an authorized administrator of Digital Kenyon: Research, Scholarship, and Creative Exchange. For more information, please contact noltj@kenyon.edu.

U L M D R C

2.77m
3.37m

U I R S
R U M A L D
R A U L
E L I S A B E T H
F O
A U
N M N

NOTE: THIS IS LAST YEAR'S TEST PIT 2A
BASICALLY BACK DIRT

1 FEBRUARY 2000

Workers
Manuel
?

have begun excavating structure 59

Alicia has subop 4D. I have 4C (southside)

the workers are going down 20 cm in arbitrary levels

Lot 1 = 20 cm from ground level - consists of
topsoil, rocks, pottery sherds
had them straighten the walls

Lot 2 10 cm down - arbitrary
having them break it down and slowly shovel out
so I can look through it
just finding pottery sherds

Lot 3 some rocks - told them to dig around so I
can see if it's a structure or not
going 10 cm down again
most pottery sherds have been quite small, but
just found one ~ 10 x 6 cm

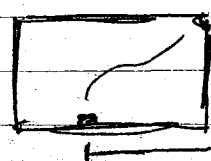
have an animal burrow in pit
35 cm deep (top of)

Pat said to quit at 40 cm

• some of what I have found may be barache (sp?)
or just rocks but I'm not sure

• I had them remove the rocks - Ed; Pat said
they had been thrown there last summer

N
↓
S



exit
in this
corner

44 cm

Lot 4

10 more cm (50 total)

removing the big rocks

according to the soil (said Pat) I shouldn't
really find any more cultural artifacts ~~at~~ past this depth
only found 27 sherds at this level

This is fun. I need a hat though. I also need
to find out exactly what baharache (or whatever is
looks like and how to spell it.

2 February 2000

Lot 5

We are starting the second square meter - to the north of the first

I am having them dig 20 cm initially and told them to remove the rocks since this is the test pit/ backfill from last summer

We are finding quite a few pottery sherds and rocks that might have been used for something but since this was test pit 2A from last summer its all out of context

pretty much all of the pottery found has been the same orange color - but some has more glaze than others - from manufacturing diff. or preservation?

found some greenish, soft rock

Lot 6

going down 10 more cm

finding less at this depth

several whitish pieces in addition to the orange

Lot 7

going down 10 more cm (40 cm total)

more orange sherds - shocking

found some easily broken white rock? which Manuel broke

actually finding more at this depth than the last - seems kind of strange

found some really crumbly brown/yellow rock

I found my first piece of obsidian its rectangular, flat on ~~the~~ bottom, up in triangular shape along the length, gray in color - a blade?

Lot 8

North to the next square meter

only going down 10 cm initially, around a large rock in center

Ed thinks the wall ~~is~~ is in this unit though Pat told me it's in the next one

crumbly orangish stone

orange pottery sherds

2 February 2000

Lot 8 cont. Ed said to remove the more northern rocks but leave those on southern edge

finding quite a bit of rock / chert
small greenish rocks (contains copper?)
white stone (sharpened?)

piece of pottery with a cross or X raised on it
piece of charcoal (small)

found more here than in other lots - a lot of rocks that may have been used

small, basically flat piece of black obsidian w/ swirling pattern on it

colorful piece of chert maybe used to make stone tools

3 FEBRUARY 2000

note: yesterday I didn't know about the charcoal / carbon foil procedure so the charcoal I found is useless

Lot 8

cont.

~~going down to more cm in square 3~~

cleaning up lot 8

found bone? maybe an animal's tooth
stone flakes, pot sherds (very small)

NOTE: there are now 3 bags for this lot, need to remark bags at the lab

they are now removing the southern rocks (I think will end up going too - it looks like the wall is in the next square to me but I don't know)

Lot 9

finding some nice stone flakes
- going down 10 more cm to 20

pot sherds with rough side & smooth side
out of control digging by workers

another 15 cm down to 35

Lot 10

shaped piece of pottery
some bone fragments
not too much

cont.

3 FEBRUARY 2000

LOT 11

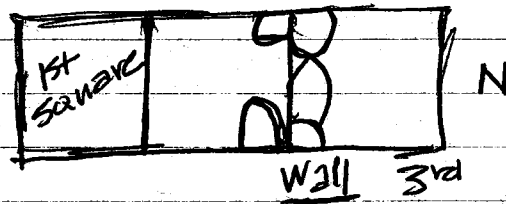
at approx. 35cm from ground level we have but some straight, flat rocks which may be the wall we are removing the dirt around them (in 3rd square, ~~20~~ on southern edge) finding pottery sherds, orange in color going down 15cm but mostly big rocks that we are keeping in so not getting much

LOT 12

back to the second square - going down 20cm more (down to 60cm from ground level) to see if what is just north of it is indeed a wall finding sherds and flakes of rock seems there is a snake hole NW
okay it is definitely a wall on the S edge of square three

now am going to dig to the bottom of the wall there is also a large, flat, round rock S of the mos wall on the eastern edge

still in the process of uncovering wall at quitting time



LOT 13

4 FEBRUARY 2000

starting at 60cm below ground level to the bottom of the wall in second square

finding small orange colored pot sherds

a round green stone which Manuel broke in two potsherd visible in eastern wall at approx 53cm from ground level

stone fragments; some small green

NOTE: my theme is Beatles' songs so my first wall ~~will~~ henceforth will be called Rocky Raccoon

pink colored rock

4 February 2000^{cont.}LOT 13
cont.

have dug down to about 90 cm, the wall seems to have stopped, am having them clean it up more sherds in the western wall at about 50 cm the lowest part of the wall seems to be at 86 cm

LOT 14

Rocky Raccoon is unveiled! looks like some of the rocks of the top layer are missing and the 3 part seems to be added on a later fourth square

uncovering stones just below ground surface to see if there is a pattern

finding quite a few sherds and stone flakes

pot sherds: orange in color, have the imbedded linear/swirly pattern on one side > my workers said they were part of a H₂O pitcher

piece of charcoal, put in foil

sherd with raised, round piece on it

NOTE: this trench is on a slanted hill, I am going uphill so this lot is 0-50 cm in the NW corner but only about 0-5 cm in the SE corner but it is flat on bottom (other than the rock we are going around)

there is a large rock very near surface on NE side w/ flat side facing W - Ed thinks it may be a corner to a wall running N-S (Rocky Raccoon is running E-W)

LOT 15

moved N to the fifth square

once again cleaning off the surface to uncover the rocks near surface level, trying to follow the N-S running wall on the eastern edge of trench

finding some sherds and pieces of stone

this lot is 0-50 cm in NW corner, 0-15 cm in SE corner (on top of rock), level on bottom

obsidian piece, brownish in color, not a blade this wall looks sort of slanted but maybe it's the trench

AP-00-16-6

11 FEBRUARY 2000

Note: have missed field work 7-10 due to rain and the flu; Alicia has taken over what would have been my square 6
cleaning off square 5 in order to see rock pattern

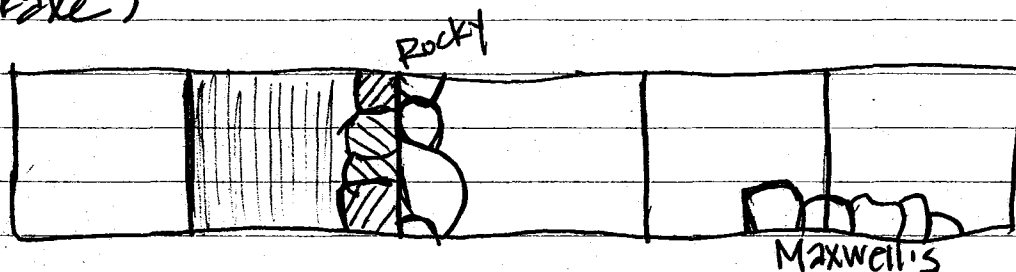
LOT 16

NW corner 60 cm from ground level, SE corner ¹⁵ ~~20~~ cm to Maxwell
not finding much in the way of artifacts
took out a few of the top rocks on the E/middle
of the square (at Barrett's suggestion)
small piece of obsidian - broken, not in blade shape
or anything
naming the N-S wall that goes from square 3
into 4 "Maxwell's Silver Hammer" (an ode to
the pickaxe)

lower



S



N

LOT 17

now cleaning the floor (rocks) of square 4
[Manuel has lived in Pueblo Nuevo his whole life, he
went to primary school, wife and 6 kids: oldest 26,
youngest 3?; has a sister in New Orleans who has
lived there for a long time, his mother is dead
finding some sherds, small - some pieces of rim
small piece of obsidian, and another
sherd - orange w/ black triangular shape painted
on it? just about an inch big
small piece of bajareque
talked to Pat → am taking out surface rocks
part of a rim and maybe part of a handle
Maxwell seems to possibly extend all the way to
Rocky - have removed more upper rocks (tumble)
from squares 3 & 4

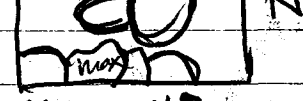
AP-00-16-7

11 FEBRUARY 2000 cont

piece of obsidian - maybe part of a blade - light brown
Maxwell seems to end at the southernmost edge
of square 4

bottom of Maxwell SE corner square 4 approx ⁵²~~53~~ cm
below ground level

goes to almost the northern edge of square 5 -
can't really measure this edge b/c blocked by other
rocks that may be forming another wall

at northern edge of square SQUARE 5 
four Maxwell measures approx. 70 cm
about 2m long running N-S but possibly about 50 cm
more into square three (or is that part of Rocky?)

didn't find much in the way of sherds, etc. today
but pretty successful in uncovering the stone structure

NW corner of lot 17 approx 56 cm (but rock in bottom)
SE corner of lot 17 approx 13 cm (")
middle of lot 17 approx 70 cm below ground

14 February 2000

beginning the lateral trench - out from square two
to the west - trying to follow out Rocky Raccoon

Lot 18

square 6

digging 20 cm from ground level to start - I'm
not sure if this square was disturbed this summer
(if it was part of test pit 2A)

finding some sherds - part of a rim about 3x5 cm
small piece of almost clear obsidian - another piece
of clear/brownish obsidian

another piece of obsid. - part of a blade ~ 2 cm long
rim piece ~ 8x6 cm

reddish colored arrowhead type thing / spearhead
more of the same chert

14 February 2000

Lot 18
cont.

another piece of rim - though they've all been pretty dispersed throughout the square possibly lot for wish list

Rocky RAZZLOON seems to running the length of the square along the northern edge

Lot 19

square 6

20-30cm from ground level square 2 lateral first 5m completely devoid of anything there is a large rock butted up against the southern edge of Rocky - I am leaving it in for now its about 47cm long and 30cm wide, 21cm from the eastern edge of the square only found one lithic (I think it is) in lot

Lot
20

a couple of good sized sherds 30-40cm from ground level, lateral off square 2 (to the west) structure 59 relatively large sherd, thinner than most, $8\frac{1}{2} \times 7$ cm 1 piece of obsidian

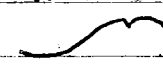
- Pat & Ed just came by - am now naming feature in square five, wall (probably an addition) runs East-West; will excavate laterally later

YELLOW SUBMARINE

Ed also said I could remove the rocks (tumble) south of Rocky

Lot 21

have removed tumble 40-50 cm below ground level some decent sized sherds mostly from about the middle of the square

a sherd with rounded part sticking up and a depression in the middle of the round 
Lithics

14 FEBRUARY 2000

Lot 21
cont

*

square 6

part of an obsidian blade ~ 3cm long
more of the red/rose colored lithic (same as arrowhead)
another piece of obsidian

[taking time out in order to draw structure / trench
w/ Ed & Pat & Alicia]

have found several larger sized sherds - eastern side,
northern half - some orange colored, some more
of a light brown, some curved pieces
- some of the light brown seem like they maybe used to
have a dark (black?) glaze on them

at about 45cm hitting a lot of rock, sherds and
light brown/white in the dirt

more of the rose colored lithic

large sherds of pot in NW corner up against Rocky

some rims, sides

sharp, cylindrical shaped obsidian

Lot 22

*

continuing the lateral to square two (to the west)
following Rocky

50-60cm below ground level

more large sherds - orange; part of a handle
lithics

part of an obsidian blade ~ 3 1/2 cm long
another blade fragment 4 1/2 cm long

having them clean off the rocks on northern
edge - the top rocks look like they are probably
tumble → Pat just said I could remove them so
we are taking out the ones from about surface
level down to almost 50cm

2 sherds that fit together - put them in their own bag in big
bag - not sure what they are from

AP-00-16-10

15 FEBRUARY 2000

Lot 23

Lateral square to the west of square two - going down 10 more cm 60-70 cm below ground level -

square 6

Rocky on northern edge

first few cm only finding small sherds unlike last lot at about 65cm finding some larger in NW quadrant

Note: I changed my mind about removing the rocks in the wall yesterday - I only took out the top ones to about 40cm below ground - the ones there don't really look like tumble to me (at least at this point) - at least the two eastern rocks don't - they are pretty large and straight and the most eastern has a flattened face to the south

found some more of the rose-colored lithic though it seems to have more orange in it than from yesterday

piece of obsidian, but not thin like others - its big chunk, flat on one side and chiseled on other (a core?)

Lot 24

20

10cm more

90

70-80cm below ground

found some carbon - put in foil - was a good sized piece but Manuel broke it

some good sized sherds - orange/red, thick, some rim pieces, black inside

small piece of obsidian, clear w/ brown tint
more rose-colored lithic

Note: have been measuring this square from the SE corner which is a little downhill from north

rounded sherd

sherd with etched linear design

green rock, some sherds with black lacquer

AP-00-16-11

15 February 2000

Lot 24
Cont

square 6

the carbon found earlier was about 80 cm below ground level and about the middle of the square on the eastern edge

Rocky looks good - nice big rocks w/ pretty flat faces on southern side

stopping this lateral square at 90 cm which once again seems to be the bottom of Rocky

am moving another square west in order to follow Rocky to its corner (esquina)

Lot 25

square 7

lateral square at 2-3 M west of eastern trench wall, 0-20 cm below ground level

down about 10 cm finding small sherds and a piece of obsidian which I think might be green - 0-10 cm there wasn't anything more of the red-colored lithic not much in this lot

Lot 26

going down 10 more cm - 20-30 cm below ground very few artifacts here
few small sherds and lithics

16 FEBRUARY 2000

Lot 27

30-40 cm below ground level in second lateral square; continuing to explore Rocky

a few large sherds - thin, orange - NE quadrant
some thick lighter colored sherds with the black inner layer from middle of square - some rim pieces
a sherd from N - maybe part of a handle or something has rounded part with circles etched in it, orange

16 February 2000
cont.Lot 27
cont.

*

square 7

a few large sherds that look like they may fit together were about 30 cm N on the western wall, a couple are curved / rim pieces; the thicker kind with the black middle layer > 3 pieces - Manuel thinks its a plate for tortilla making ^{put in separate bag inside lot bag} orange handle piece

Lot 28

40-50 cm below ground level, lateral square 2
thin orange / red sherds
small handle & rim piece - maybe from a bowl or something
some more of the rose-colored lithic
good sized chunk of black obsidian carved in triangular shape

Lot 29

50-⁷⁰~~60~~ cm below ground level > carried away again
large sherds SE quadrant
more rocks in this level
~~small~~ small, colorful lithic - red & green
big piece of the rose-colored lithic
nothing too exciting here

Lot 30

70-80 cm below ground level
removed large rock from SE quadrant
bright orange lithic
rounded triangular shaped sherd - possibly the leg of some vessel - dark orange
thicker pottery w/ black mid layer - possibly part of a handle
small sliver of clear obsidian w/ brown flecks
removed another large rock from middle of western side

16 February 2000 cont.

Lot 30
cont.

square 7

Manuel just ripped a big rock out of the western wall so now there's kind of a hole in the side of the trench - why do they keep just getting rid of stuff today without asking? They're usually better about that

nice rim piece of the thicker type sherd
the corner of Rocky may be in this meter (~20 cm from ~~western~~ edge) but will go laterally in order to make sure it's not just a gap in the wall

Lot 31

80-90 cm below ground level
smaller sherds being found
some lithics

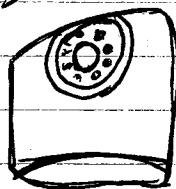
nothing too great at this level - have found a couple decent sized sherds

a sherd w/ the darker red/orange and the lighter orange, with black middle layer (2)

some small, black sherds

cleaning up the wall

rounded, stamped sherd



Lot 32

square 6

a further meter to the west (3-4 m from eastern trench wall)

going down 0-20 cm for this lot

brown obsidian - part of blade - 2 1/2 cm long
chunk of obsidian, irregular shape, brown
small, thin almost clear obsidian

rose-colored lithic

piece of obsidian blade, light brown 4 1/2 cm long,
another 4 1/2 x 2 cm and another chunk
tiny sliver of obsidian

16 February 2000 cont.

Lot 33

*
squares

20-30 cm below ground level, third lateral square to the west, following Rocky. (to W of square two)

some good sized sherds - orange, thick, NW quadrant
 figurine head - looks like a dog, orange in color, missing an ear, - found middle of northern edge, found two more parts of it - I think it may be a whistle (~~no~~ larena?) - put in separate bag in lot bag
 small piece of obsidian
 leg of a metate
 large sherd - rim, thin, light colored

17 February 2000

Lot 34

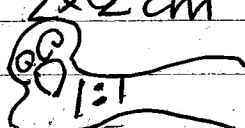
K

30-40 cm below ground level, third lateral square to the west of square two, following Rocky

small piece of brown obsidian
 good sized sherds of the thicker, lighter colored pot. w/ the middle black layer

part of obsidian blade ~ 2 cm long
 lighter colored pot. sherd - rim piece, thick but without the black mid. layer

2 rounded pieces that fit together - have a rounded rim that goes up - looks like if it were whole the diameter would be about 6 cm - put them in a separate bag w/in lot bag

obsidian piece about 2 x 2 cm
 part of a figurine?  (really bad drawing)
 - curved, like it would

have been hollow on underneath

(small triangular piece of obsidian (brown))

bayareque

Lot 35

large part of pot on western edge, middle about 42-47 cm down - put the pieces in a separate bag within lot bag

17 February 2000 cont

Lot 35

cont.

*

nice little handle

some rim pieces

rim, side and part of the bottom of a bowl - I think

~~50-60 cm below ground level~~ it has a black finish

rose-colored lithic

some dark orange-red sherds

part of matate

Lot 36

50-60 cm below ground level

some nice rim pieces

(Manuel is mestizo and what's his face [tarius?]
is pure Indian they said - interesting Manuel lives
in P.N. and other in Petoa)

rose-colored lithic

Lot

37

60-70 m below ground level

some bajareque in soil along w/ off white specks - soil
small sherds

chunk of black obsidian

large chunk of brown obsidian 5 1/2 x 3 cm

small piece of obsidian - brown

chunk of black obsidian

nothing terribly interesting here

But the wall is still going

Lot 38

70-90 cm below ground level

rose colored lithic

small piece clear/brown obsidian

hit a bunch of big ~~stinging~~ biting ants

small sherds

piece of obsidian blade

some larger sherds in middle of square

17 February 2000 cont.

Lot 38
cont.

squares

have found large pieces of a vessel about 80 cm down about 10 cm S of ~~the~~ Rocky and 10 cm E of trench wall - put pieces in separate bag w/in lot bag - including piece w/ handle part of obsidian blade ~ 2 1/2 cm long, clear/brown a couple more small chunks of obsidian, same color looks like Rocky might end here about 20 cm from trench wall - there don't seem to be any rocks in the wall at the bottom, though I suppose this could just be another gap, also there doesn't seem to be a structure in Alicia's subop that lines up to this point though she hasn't dug much there

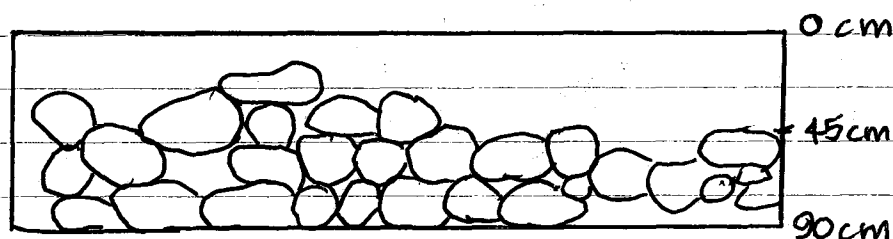
Ed's going to look at it tomorrow and see where I should go next

18 February 2000

Waiting for Ed - having the workers move the backdirt & rocks to the south of the trench

N
W + E
S

square two



approximate sketch of Rocky Raccoon

You know I think we need to continue west - at least to just make sure - but I guess I will wait for Ed.

OK I'm going ahead and going another M west

Lot 39

fourth lateral square to the west 0-20 cm

18 February 2000

Lot 39
cont.

square 9

nothing for the first 8 cm
rose colored lithic middle of eastern wall
small sherds, lithics
obsidian chunk $2\frac{1}{2} \times 2\frac{1}{2}$ cm
pieces of obsidian blade
removed some large tumble (without asking)
nothing too interesting here

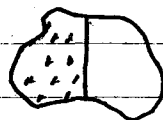
Lot 40

20-30 cm below ground level - fourth lateral
square west of square two - trying to see if
Rocky Pigeon continues on northern edge which
doesn't seem likely

Good sized sherds of the thicker, lighter colored
type found on northern edge, western side of trench
some good sized tumble

OK fantastic I think the wall (Rocky) is continuing
the GREAT WALL of C. Am., Manuel and I have
decided it goes all the way through Guat. to the Pacific
maybe part of a candelero
higher volume of sherds in this lot than last
lithics

Sherd w/ etched design



obsidian

some rim pieces

Lot 41

30-40 cm below ground level
rose-colored lithic
rim pieces
small sherds
not much in this lot

18 February 2000

Lot 42

square 9

some good sized sherds found in middle on E edge - sandy inner layer, orange outside; also some with the black mud. layer

some large tumble

40-50 cm below ground level

some curved sherds

(I feel like my guys aren't doing so well with getting the sherds and stuff out today. I almost always do it with them anyway but usually it doesn't seem as imperative. Well its Friday.)

there are some large rocks going south from what could be a corner - one of the rocks is pretty messed up, they are probably just tumble but I'm keeping them in for now so I can see them better

Lot 43

50-60 cm below ground level

large part of a vessel wedged in the N-S rocks
another large piece against Rocky about 60 cm from western wall trench

rose-colored lithic

rim piece

Lot 44

60-70 cm below ground level

chunk of obsidian blade

larger sherds among/under ^{N-S} rocks

Lot 45

70-90 cm below ground level

small piece of figurine or something
more sherds, lithics

chunk of obsidian

18 February 2000

Lot 45
cont.

I don't know if these N-S rocks are a feature or not - all the stones in this square are a bit of a mess - part of a terrace, a wall (not well-preserved) cornering off Rocky?

rounded sherd with two engraved circles

sherd w/ handle and engraved dots

using two bags for lot

rim piece

Don't have time to finish lot - will do it Monday (have done the eastern half)

21 FEBRUARY 2000

Lot
45
cont.

finishing last part of lot 45
it rained over the weekend but its not messed up

I'm not quite sure what I'm going to do next. I think I will head north from square nine and see if Rocky goes that way. Though its corner might be in square 8.

part of obsidian blade, 3 1/2 cm long

rose-colored lithic

sherds

Lot
46

moving north from square 8 following what I think is the corner of Rocky approx. 27 cm east of western side of square

tumble

going 0-20 cm below ground level

sherds

am digging around several rocks that could be part of feature

AP-00-16-20

21 February 2000

Lot 47

20-30 cm below ground level, square 10
sherds

still going around rocks

rim piece w/ handle, handle has ~~etched~~ in it
piece of obsidian blade

Lot 48

30-40⁵⁰⁻⁶⁰ cm below ground level, square 10

a lot of rocks to go around

small flake of obsidian

sherds

It's now pretty much all rock - maybe a terrace
or something though a lot of it may just be
tumble

^{with rocks}
on hillside measurements: SW corner 32 cm,
SE 35 cm, NE 45 cm, NW 40 cm

~~not~~ small volume found in this and last lot

am going to go north of square 10 to see if I can
tell what's going on

Lot 49

square 11 - Ed and Pat came by - I am going
west of square 10 not north

0-20 cm below ground level

nothing in the first 10 cm

going around some rocks

hardly any sherds

RAIN

Lot 50

20-30 cm, going around the rocks
rose-colored lithic

sherds

took out some of the tumble
face of figurine

AP-00-16-21

21 February 2000

LOT 50
cont.

*

another face - both found in NW quadrant
large part of a vessel
piece of obsidian(2), rose-colored lithic

going to clean up the front face of this so its
more clear then will probably move west from
square 11 b/c it looks like this is backing onto a
structure

23 February 2000

had cultural meeting yesterday

LOT 51

40-~~90~~cm below ground level - ^(south) front face of
square ~~eight~~^{ten} only
some nice rim pieces
small piece of obsidian

ok that is the corner of Rocky in square 8/10
and it looks like it goes north → excavating
one meter north of square 10

it also looks like the rocks in square 11 are the
back of some feature so eventually we will work
on following that through

LOT 52

square 12, 0-20 cm below ground level
removing surface rocks
finding a few sherds
this square is slanted uphill so though bottom
is flat corner measurements differ

piece / chunk of obsidian
SW 5cm (to rock) E 30cm NW 20cm NE 18cm (but to rock)
about 18cm to dirt

23 FEBRUARY 2000

Lot 53

*

about 54cm from western wall and ⁵⁴cm north into square 11 40-90cm below ground level (the portion beside Rocky that's just dirt) and about 20cm into square 10

sherd w/ handle
 possibly part of an ocarena (sp? - whistle)
 part of a handle
 rim pieces
 maybe a big ~~chunk of obsidian~~ ^{leg of a censer} (part of one)
 part of an obsidian blade
 pretty good volume of sherds being found
 bajareque
 piece of obsidian
 advice of Ed - going to take out some of the tumble lithic
 rose-colored lithic
 another handle
 big chunk of obsidian - core
 almost a sphere of obsidian
 (what's his bee's daughter [who's really cute] 's name is Ana Christina and his sister sells refrescos at the site)
 another handle
 quite a bit of obsidian here

24 FEBRUARY 2000

Lot 54

cultural meeting - at site at 9:00
 along rocky about 20cm into square 10 and 54cm from W. wall, of square 11, 40-90cm below ground level, 54 - cm north
 obsidian, part of blade
 rim pieces
 am going to remove the tumble - that's about 40cm below ground level in square 11
 rose-colored lithic
 man - I'm sick

24 February 2000

LOT 54
CONT.

 2 bags
*

naming the wall that heads north from ROCKY RACCOON -
SGT. PEPPER

small part of matate

maybe part of an incenser

very large piece of obsidian, about $5\frac{1}{2} \times 2\frac{1}{2}$ cm

cylindrical sherd about 3m long - don't know what is from, orange in color

ok there's a lot more dirt to work w/ in this "lot" than I first thought there would be. It definitely should have been split up but it was weird from the beginning - it not being a regular square meter - and then Ed coming around and saying to take out more stuff which my guys would just start doing. So it's a little out of control. I feel like it wouldn't matter that much except that the context/provenience for the artifacts just won't be as specific/good.

cone shaped sherd - small

I think my guys throw out a lot of bajareque.

okay one of Alicia's workers is creepy

I think they may get the bajareque thing now, I hope.

it looks like in square 12 there could be the western part of YELLOW SUBMARINE though it's slightly off

LOT 55

square 13 0-20 cm, square north of square 11 following SGT PEPPER north

removing surface rocks

nothing in the first 10 cm

there are some more rocks lining up w/ those west of YELLOW SUBMARINE barely below surface level - am keeping them for now but at least one of them looks like tumble

my guys are getting even more lax about the measurement thing

AP-00-16-24

24 February 2000

Lot
55 cont.

Lithic

removing more tumble

underneath - a not very well preserved face w/ headress
in two or maybe three pieces - put in separate bag
within lot bag

this lot on hill so measurements \Rightarrow NW corner = 34 cm
NE 30 cm, SW 20 cm, SE 20 cm below ground level
rim piece

• there are three good sized rocks not far below
ground level ~~on~~ that run N-S and almost look
like they belong w/ SGT. PEPPER but they are just a
few inches too far west. I'm leaving them for now
but as we go deeper I think we will have to remove
them in order to see SGT

this stuff at the northern edge of square 13 - the
western YELLOW SUB is just tumble I'm pretty sure,
but I don't know about those in square 12

25 February 2000

LOT 56

~~down~~ 20-30 cm below ground level - square 13

removing some tumble - there are still a lot of
rocks and I am unsure what to do
sherds

some rim pieces

tiny piece of obsidian

maybe the beak of a bird

rose-colored lithic

NE corner 45 cm NW 36 cm (to rock) SE 30 SW 42
cm below ground level

LOT 57

⁵⁰
~30-~~40~~ cm below ground level

green rock

large sherd with damaged rim

25 FEBRUARY 2000

LOT
57 cont

2 days

keeping the rocks on the western side at least for now - I don't know if they go with the stones to the south

also keeping the linear outcropping from SGT PEPPER on the eastern side of the trench so we are really just excavating the middle strip of the square - right now that's about 50 cm wide

and Manuel has gone a little crazy - the SE corner is down to 50 cm below ground level

LOT 58

50-60 cm below ground level

square 13, once again 50 cm strip b/w rocks

pottery that's part of a foot

rim piece

chunk of obsidian

they knocked out one of the rocks I was saving by a reque

Carbon found about 10 cm south of northern edge of trench, 58 cm below ground level

LOT 59

60-70 cm below ground level, still going b/w the stones

some rim pieces

we think Alicia has found continuation of SGT. PEPPER in her trench. We will find out soon. Our measurements are kind of out of whack so our meter markings don't line up. We have decided to measure out one meter with SGT. PEPPER in the middle (so E-W). The N-S measurement is 170 cm long. Alicia will be doing it.

pieces of obsidian: $5\frac{1}{2} \times 2$ cm, 4×2 cm, 3×1.8 cm, $3\frac{1}{2} \times 2\frac{1}{2}$ cm, rose-colored lithic

25 February 2000

Lot 60

70-90 cm below ground level, square 13, between rocks on eastern and western sides

small piece of obsidian

there is now just dirt under the eastern rocks - will ask Ed & Pat about them Monday since they aren't here now
bayareque

not too much in this lot

we have the portion of the summit cleared and the wall - SGT. PEPPER - does continue. It's actually almost at surface level. Though they do look slightly diff. I guess Alice has some doubts.

28 February 2000

having them move dirt to excavate west from square 13. Ok I feel really bad but I've decided now to excavate north from square 6 instead. Alice is in the way on the other side and those stones are probably either tumble or another structure. I will deal with them later.

Lot 61

north of square 6, 0-20 cm below ground level,
square 14

SW corner, SE corner

Rocky on southern edge

there is the bottom of a small tree in this square on the eastern side about 10 cm from northern edge and its root system. I hope they don't just rip it out along with a bunch of rocks.

small volume of sherds

piece of obsidian

rose-colored lettuce

there are some stones lined up running N-S parallel to MAXWELL

28 January 2000

Lot
61 cont.

I have a lot of rocks here.
removing some more tumble

Lot 62

20-25 cm below ground level, Square 14 (SW)
some rim pieces
a sherd w/ criss cross etchings
not going to remove any more tumble right now -
just clean it off and move west to see what's happening
small piece of obsidian

Lot 63

0-2⁵ cm below ground level, Square 15 (west of
square 14)
rose-colored lithic
small sherds, not many
bayareque
part of mano found on western edge of square
ok lots of rocks again - they don't look great but
are as good as the ones from square 14 Ed said
to leave so I'm opening another square.
Maybe this is a terrace or something.

Lot 64

0-20 cm below ground level, Square 16 (north of
square 14)
alright. Manuel ~~is~~ has gone crazy. He keeps taking out
rocks even after I've told him that we need to clean
them off and look at them before we remove them.
It looks like its going to rain.
going to leave the rocks that are left and then
move west to check things out. See if YELLOW SUB
continues.

It seems squares 14 & 15 are rocky. Its about
1m thick. It looks like its also possible that if YELLOW
does continue it was the original southern wall a b/c

28 February 2000

LOT
64
cont.

there is a ^{stone} ~~corner~~ in square 13 with two flat faces that could have been an original corner with SGT PEPPER an addition.

Bone found in southwest corner of square. I don't think it's human - maybe deer. Doesn't really have any features but is notched ~~in~~ down the middle. Ed is supposed to come take a look. found about 19 cm below ground level.

seems to be that the smaller stones north of Rocky are fill

* This lot is 20 cm below ground level from SW corner but uphill so NW corner is 50 cm below g.l.
some rim pieces
a little baryregue

LOT
65

0-20 cm below ground level, square 17 (west of square 16)

bone found about 14 cm below ground - 20 cm west of where other bone was found (which was about 20 cm north into the square)

trying to get them to refrain from removing every rock just a few sherds

1 March 2000

LOT
66

0-80 cm below ground level, square 18 (north of square 16)

all sorts of tumble - trying to see if anything is going on

hardly finding any artifacts

lots of tumble but I'm afraid to move much of it
snake hole?

OK took some of the rocks out

you know I'm not so sure about YELLOW SUBMARINE anymore

AP00-16-29

1 March 2000

LOT
66
cont.

It looks like there is a line running N-S in the western half of this square - maybe a short wall chunk of obsidian - found by mano

an almost whole mano, just part of one end ~~is~~ has chunk torn out, 80cm below ground level on northern edge

OK this lot is pretty big - crazy digging once again the western half is all rock but the eastern half is 50cm below ground level in the S and 80cm below ground level in N

byarque

LOT 67

square 17, 20-60 cm below ground level removing tumble to see if there might be an east-west wall

by the way, the wall in square 18 looks pretty good but I need to take off the tumble on the southern side, its name is IN THE ROAD part of obsidian blade

OK I hardly have any notes ~~or~~ artifacts today - all we've really done is move a lot of rocks and clean others and I don't really know what's going on here by IN THE ROAD

LOT 68

square 19, 0-10 cm below ground level (west of square 18)

(Manuel is talking about how he worked in a judicial court for 4 years and wrote a lot - like a stenog/court reporter?)

part of obsidian blade, chunk of obsidian

IN THE ROAD seems to be continuing west

tomorrow I will remove tumble south of it

2 March 2000

arrive 9:30 after cultural meeting
 planning on removing tumbles of IN THE ROAD
 ask Ed about removing stones W of SGT PEPPER - I
 don't really think that's anything

could the space in the middle of where (I think
 at this point anyway) STEEL MONKEY, IN THE ROAD
 and SGT. PEPPER join up, just be fill? its pretty
 much at the top of the summit. I don't really
 know anything about how these structures were
 constructed but it seems too small to be a room.
 Is it possible that it was stone fill maybe even
 topped w/ bayareque construction - perhaps a
 pillar/column supporting middle of roof? That
 could be a completely absurd idea. I just don't
 know anything about these.

need to excavate the random strip of earth at top
 of summit where Alicia's and my meters didn't
 quite meet up

Lot 69

20-65cm below ground level - southern side of
 IN THE ROAD, square 19

small piece of obsidian, small sherds

removing tumble in order to see IN THE ROAD

talked w/ Ed: configuration of walls possibly / prob.
 formed a bench where one could sit and look south
 into most likely a large private room ^{more maybe sleeping quarters} - Alicia's
 area probably the more public quarters of residence

axial trench portion of STEEL MONKEY most likely
 the doorway to my area / the private quarters

this is pretty exciting - our structure is really
 coming together. I'm glad I've been able to stay
 in the field long enough to see this.

2 March 2000

Lot 69
cont.

having them move the really big rock which Ed said to. I thought we would keep it. Oh well. OK it seems whenever I remove tumble I just find more. IN THE ROAD just doesn't quite seem to be coming together as I'd hoped it would - at least not at this point.

its now after lunch. This is taking forever.

OK there is a constructed ^{niche}divet / alcove thing in the wall and its quite big. Don't know what function / purpose would have been. The ~~Benings~~ faces of the rocks are flattened, however, so does not seem to be due to deconstruction.

the ~~divet~~ ^{niche} is about 60 cm wide and goes 50 cm back in IN THE ROAD

some bapreque and lithics found
soft green rock

Ed says he has never seen a divet this big. Ed said I could remove the stone from the western edge of SGT. PEPPER if I want but its not really necessary since we can see the wall okay.

Pat thinks the space b/w IN THE ROAD (and east to) YELLOW SUBMARINE is another of those niches

6 March 2000

Lot 70

the summit - Alicia's and my measurements don't line up so we have a random strip on top. We decided to just do the whole thing at once. It goes 180 cm to the west of the western axial trench wall and is 50 cm wide.

I think this will all be the back of Steel Monkey and the IN THE ROAD feature and some fill in the middle. I don't think we'll go much below surface level.

6 March 2000

LOT
70
cont.

I wish we could clean up this terrace floor. Its messy and tumbley. I know that doesn't matter. But I want it to look like it did. I also am going to clean up the western part of SET. PETER if there's time finding a few sherds

really just cleaning off the rocks. Have removed 4 pieces of tumble from southern edge.

piece of obsidian, another chunk could, but not really necessary to remove any more tumble off summit

maybe 0-10 cm below ground level in the few spaces b/w the rocks. But really mainly just rock. (when I go east w/ Rocky my subop will be 4G)

good - Ed actually said something about cleaning off the floor so we are doing that now.

we also cleaned up the walls of the niche more and it looks really good. Rocks are completely visible - nicely constructed and preserved.

I need to remember to figure out what to do on Thurs. since we aren't allowed to walk here anymore.

LOT 71

surface floor, squares 16 and 17
cleaning off some of the tumble
alright. This floor isn't shaping up so well thus far.

4G

LOT
001

moving east w/ Rocky 0-20cm below ground level,
square 21

OK one of my workers just went home sick so I just have Manuel now

small sherds, rim piece

red colored lithic

whats his face took his shovel so now we don't have one which sucks

Subop 4tr

6 March 2000

LOT
001
CONT.

small piece of obsidian
lithics
sherd w/ some designs etched in it

8 March 2000

LOT
002

square 21, 20-30 cm below ground level
following rocky east
hardly any artifacts here, just a few sherds

LOT
3

30-40 cm below ground level, square 21
rose-colored lithic
some sherds, some good sized and rim pieces
(curved machete = col de gajo)
removed some tumble
obsidian

(OK I just got another worker and am having him
remove the tumble from the west side of SGT.
PEPPER - so I guess that will be 4C/07Z - I hope
that's OK since I already closed the subop)

a lot more sherds being found at this level
sherd w/ handle
bayareque

LOT
4

40-50 cm below ground level, square 21
sherds, some rim pieces
small part of matate
removed more tumble

from the surface it looks like our structure may
end about ~~40 cm~~ within the next meter east
broken handle - shapes etched into outside
large rim piece - light colored, black inner layer
piece of obsidian

AP-00-16-34

8 March 2000

LOT
14 cont.

Ed said I don't need to go any further down since we can assume Rocky remains at the same depth throughout. I will continue east to find the corner and then go north to make sure it turns. Then I will explore east of MAXWELL.

LOT 5

0-20cm below ground level, square 22
following Rocky RACCOON east
sherds
obsidian
not much

4C/072

good amount of sherds, pieces of obsidian blade
40-90 cm below ground level, 75 x 25 cm strip on
western side of SGT. PEPPER
guy did a good job cleaning it off

I am now having him clean off the floor in the middle of ROCKY, SGT. PEPPER, MAXWELL and IN THE ROAD. Well, hopefully there will be a floor under the tumble and dirt. I already started ripping out a bunch of the tumble and all the workers thought it was crazy a girl was doing that. I hope this guy understood what I told him to do. He seemed a little confused, and sometimes he just sort of stares into space.

LOT 6

20-30cm below ground level, square 22
small mano, intact
part of a censer?
obsidian blade pieces

I think they have once again lost the concept of measured lots and gone below 30cm

AP00-16-35

8 March 2000

LOT
16 cont.

~~Annihilation~~ OK this lot is down to 40 cm not 30 cm
Rocky still going so will have to move further east after
next lot

bagasse
lithics

LOT 7

40-50 cm below ground level, square 22, Rocky
piece of obsidian; part of black
sherds

Its possible the corner is here but its hard to tell

LOT 8

0-20 cm below ground level, square 23, Rocky
sherds

I have 5 workers. Its pretty fun. This is the first time
I've had more than two.

I'm only about 2 1/2 M from the western edge of Rich's now

AC/073

the "floor" inside ROCKY, MAXWELL, SGT. PEPPER and IN THE
ROAD. I guess it looks better than it did before but it
still doesn't look great. I think I will have to work on it
more tomorrow.

- sherds, obsidian (pieces of blades)

9 March 2000

today I have 6 workers so I have 3 things
going on right now - cleaning the floor,
lot 9 20-30, square 23 and a new square (24)
0-10 cm which is east of axial trench square 5

LOT 9

20-40 cm below ground level, square 23, Rocky
sherds, rim pieces
piece of a matate

9 March 2000

Lot
10

0-20 cm below ground level, square 24, back of
STEEL MONKEY

lots of tumble - I think its tumbk - I'm not sure what
soft green rock, rose-colored lithic to do
sherds - small volume
small piece of obsidian
too many rocks - am going further east to see
whats going on

Lot 11

40-50 cm below ground level, square 23, Rocky (?)
some large sherds, rim pieces, a couple fit together
small piece of obsidian
I can't really tell if Rocky is continuing or not. At
this point it looks possible though it doesn't look
nearly as good as it did in the last meter.
handle piece, etchings on outside (similar to one found
yesterday)

Lot 12

0-20 cm below ground level - level w/ lot 10
few sherds
lots of rocks - pretty flat surface w/ lot 10
looks like a line that lines up w/ where I think
the corner of Rocky is here
baypreque

Lot 13

50-60 cm below ground level, square 22
digging below to see if this is the corner of Rocky
small bone fragments
part of matate piece of obsidian
sherds, some rim pieces
- the guys working on the floor: I have had them
take out a lot of tumble all the way to MAXWELL and
around YELLOW SUBMARINE, trying to get them to

9 March 2000

uncover the bottom of IN THE ROAD but they don't seem very interested and keep going back to the floor - huh

LOT 13
cont.

lithics

big chunk of bayareque

some big sherds

OK they went 20 more cm (of course)

LOT 14

0-20 cm below ground level, square 26, ~~nothing here~~
nothing here - dirt and 3 sherds

LOT 15

50-70 cm below ground level, square 23

OK when I went down in lot 13 it looked as if Rocky went on past where I thought it cornered so I am checking out this part to the east as well

obsidian

sherds, some rim pieces

(great measurements are off. I don't know how but b/w squares 23 and 27 there is 168 cm. Maybe I will just do it as one big lot when I get to it. I don't know)

sherd w/ some type of face

Rich actually has a line in his structure that sort of lines up w/ Rocky - hummm... maybe they meet

LOT 16

0-20 cm below ground level, square 27
just a few sherds and a chunk of bayareque

LOT 17

20-30 cm below ground level, square 27
a few sherds

LOT 18

30-40 cm below ground level, square 27
removing some tumble

I don't really know what's going on in here

9 March 2000

Lot 18
cont.

[Lot 15: OK now I think I have found the corner and there is a bunch of tumble on the eastern edge that looks like it fell from the north. Ed said to remove it.]
in lot 18 just a few sherds

Lot
AC/074

cleaning off "floor" but not really finding one
obsidian
few sherds
limestone
part of a censer

10 March 2000

Lot
19

"square" 28 - the 166 cm long rectangle b/w squares 27 & 23 ; 0-20 cm below ground level
hoping to find Rocky turning here
(also I am working on the floor section since I only have 2 workers - while Bill has 8 and took one of my picks. I don't think that's very cool.)
finding just a few sherds
obsidian
some kind of head (a bird? turtle?)
bayareque
more sherds, rim pieces

Lot 20

20-30 cm below ground level, square 28
sherds
soft green rock
pieces of obsidian, part of a blade
(I am getting visitors from all the traveling but the room is actually looking better. I think I will try doing it left handed for a while.)
looks like Rocky has turned

AP-00-16-39

10 March 2000

Lot 21

30-40 cm below ground level, square 28
naming this HERE COMES THE SUN
HERE COMES 69 cm into square, so actually only doing
much digging in eastern 31 cm - I hope this is
actually a wall and I haven't just made it look like one
sherds, some rim pieces
soft green rock
there are some flat rocks here - maybe a terrace?
I don't know what's going on

Lot 22

40-50 cm below ground level, square ²⁸~~30~~ ~~east of~~
~~square 4 of axial trench~~
sherds, some rim pieces
obsidian

took out some tumbly looking rocks but leaving
flat northern ones unfortunately

Lot 23

(got 2 more workers)
0-10 cm below ground level, square 29 (east of
axial square 4)
exploring back of MAXWELL
a few sherds
tumble
obsidian

Lot 24

50-60 cm below ground level, square 28
sherds, obsidian
still keeping northern rocks, still don't really
know what they are

Lot 25

60-70 cm below ground level, square 28
this is definitely some kind of terrace on the
east of HERE COMES THE SUN I will call it LADY
MADONNA

AP-00-16-40

10 March 2000

LOT 25 cont. sherds only, not very many
(will go east to find edge of LADY MADONNA)

LOT 26 10-20cm below ground level, square 29
tumble, few sherds
edge of MAXWELL visible, at this point looks as if it
is 1cm wide
looks like IN THE ROAD continues and a room is formed
by it MAXWELL, HERE COMES THE SUN
- not really enough time to begin new lots so
having them clear floor and walls

18 March 2000

students' spring break, have 6 workers

LOT 27 0-20cm below ground level, square 30, lots of rock
checking out STEEL MONKEY
piece of obsidian blade

LOT 28 30-40cm below ground level, square
back of MAXWELL and IN THE ROAD / YELLOW SUB
few sherds, vajareque
obsidian
tumble

LOT 29 40-50 cm below ground level, square 27
chunk of obsidian

HERE COMES THE SUN cent. north but seems to be bowing
out to the east
sherds

LOT 30 0-20cm below ground level, square 31 (rectangle
like # 28)
backs of MAXWELL and ROCKY

13 March 2000

Lot
30 cont.

just a few sherds
Hard to tell what's going on at this shallow depth

Lot 31

50-60 cm below ground level, square 26
HERE COMES THE SUN
trying to see if LADY MADONNA is still going
pieces of obsidian blade
doesn't really look like LADY is going further north but
apparently Imogene has several of these small
connecting terraces

Lot 32

20-30 cm below ground level, square 30
looks like it may be floor / terrace
bed - maybe jade - keeping separate
It's raining a bit

Lot 33

20-30 cm below ground level, square 31
now this looks like a floor
some sherds and bayareque
not sure what to do w/ this

Lot 34

60-70 cm below ground level, square 26
still no more LADY
few sherds, bayareque
couple pieces of obsidian

Lot 35

0-20 cm below ground level, square 32
~~pieces of obsidian~~ one sherd

Lot 36

0-20 cm below ground level, square 33
pieces of obsidian
sherds
big piece of bayareque

13 March 2000

Lot
37

30-40cm below ground level, square 30
backs of Rocky and MAXWELL
sherds (not a lot)

pyroclastic, lithic
don't really know what's happening here so I am
going east. Maybe it will all become clear to me.

Lot 38

20-30cm below ground level, square 32

part of a matate
some sherds

lots of rocks

Lot 39

tumble 0-20cm below ground level, square 34
(another one of the rectangles)
sherds, just a few

Lot 40

20-30cm below ground level, square 33

handle piece, sherds

obsidian

still can't see LADY MADONNA

Lot 41

30-40cm below ground level, square 32

pieces of obsidian, blade fragments - quite a few

lots of rocks

sherds

Lot 42

30-40 cm below ground level, square 33

few pieces of obsidian

still not seeing LADY

decent amt. of sherds, some rim pieces

Lot 43

20-30cm below ground level, square 34

part of mano, pyroclastic, few sherds

lots of rocks

14 March 2000

nervous about removing all the (hopefully) tumble I have but I have to get rid of some of it

LOT 44

40-50cm below ground level, square 32

pieces of obsidian, chunk - a core?

removed some of the tumble

(Manuel is sick today and I've got one of Jen's crappy workers replacing him. I also have Alicia's again, plus four guys who are supposed to be moving back dirt but seem to stand and stare at me.)

LOT 45

x

40-50cm below ground level, square 33

still don't see LADY MADONNA

byzantine

quite a few sherds, a large rim piece w/ handle
sherd w/ raised design (- finding more pieces of
it in next lot)

LOT 46

30cm

squares 31 and 34 - trying to clean off rocks
and remove a bit of the tumble in order to
see what's going on

sherds, obsidian, byzantine

OK there is an inner wall from Rocky parallel
to HERE COMES THE SUN - seem to be places for
posts for byzantine wall - its name will be
YOU'VE GOT TO HIDE YOUR LOVE AWAY

LOT 47

50-60cm below ground level, square 33

two more pieces of the patterned sherds - looks
like it could have been a figure surrounded by
design

piece of obsidian, good amount of sherds

14 March 2000

LOT 48

20-40 cm below ground level, square 26
 part of matate (small corner piece)
 piece of obsidian blade
 lots of rocks — removing a lot

LOT 49

60-70 cm below ground level, square 33
 lots of sherds, some rim pieces — midden
 obsidian
 quite a bit of tumble (some from Rich's structure?)
 still not seeing LADY MADONNA — maybe it was just
 a step without anything else
 i'm going to go 10 more cm just in case

LOT 50

0-20 cm below ground level, square 33
 YOU'VE GOT TO HIDE YOUR LOVE AWAY continues
 few sherds, piece of obsidian

LOT 51

20-40 cm below ground level, square 35
 bayareque
 some sherds
 YOU'VE GOT TO HIDE YOUR LOVE AWAY — it seems to be
 wider here — no it doesn't

LOT 52

70-80 cm below ground level, square 33
 pieces of obsidian
 midden — good amount of sherds, some rim
 pieces, the base of a vessel / bowl
 no structure / features

LOT 53

40-60 cm below ground level, south eastern 50 x 25 cm of
 square 26 — trying to see HERE COMES THE SUN
 some obsidian, sherds

16 March 2000

my last day out in the field...

LOT 54

20-30cm below ground level, square 29

leveling out w/ square 31, removing small tumble
bayareque

few sherds, one piece of obsidian

going to try and find the bottom of YELLOW SUB next here

LOT 55

80-100 cm below ground level, square 33

midden seems to have slowed a bit I think

good amount of sherds + obsidian

few flakes of mica (put in bag w/ obsidian)

part of an ocavena

sherd (flat) w/ hole drilled in middle and some
grooves carved into sides, round

part of figurine head? eye visible, maybe part of ocavena
no features/structure

LOT 56

0-40 cm below ground level, square 36

lithics, obsidian blade fragments
sherds

line going east-west through square lining up w/
STEEL MONKEY

LOT 57

30-50 cm below ground level, square 29

back of ROCKY and YELLOW SUB and YOU'VE GOT TO HIDE
YOUR LOVE AWAY > part of a room

cleaning/leveling floor

bayareque, some small sherds, obsidian

LOT 58

face of YOU'VE GOT TO HIDE YOUR LOVE AWAY, square 25/26

mainly tumble, a few sherds

large piece of matate, maybe about half - was a
3 legged one, smaller part of matate as well

16 March 2000

* Note to Lot 55 - found good - interesting considering there are no volcanoes near here, it has a weird red bump painted on it, maybe a stamp - bagging separately and giving to Marne; found about 95 cm down - also a part of a face found

Lot 59 Leveling floor of room formed by MAXWELL, ROCKY, YOU'VE GOT TO HIDE YOUR LOVE AWAY & YELLOW SUB; SQUARE 31 & 29. WOOHOO! I have a beautiful stone bayouque, some sherds floor, I've always wanted one of those.

OK I'm not quite sure what is happening w/ YOU'VE GOT TO HIDE YOUR LOVE AWAY when it gets about even with YELLOW SUB. Given time constraints, that's something Alicia is going to have to deal with.

Lot 60 40-60 cm below ground level, square 36 digging around the terrace type thing or maybe it's an extension of the wall that reaches oddly far to the east. It seems to stop within this meter though. It seems that it would go farther north. (some tumble needs to be removed b/w HERE COMES THE SUN & YOU'VE GOT TO HIDE YOUR LOVE AWAY but I won't have time.) (humm - maybe there is a stone floor in the big room too. It seems to be just a few cm above the small room's floor.)