

Kenyon College

Digital Kenyon: Research, Scholarship, and Creative Exchange

Four Valleys Archive

Anthropology

2000

PVC-011-R. Smith-Field Notes-2000

Russell Smith

Follow this and additional works at: <https://digital.kenyon.edu/honduras>



Part of the [Archaeological Anthropology Commons](#)

Recommended Citation

Smith, Russell, "PVC-011-R. Smith-Field Notes-2000" (2000). *Four Valleys Archive*. Paper 28259.
<https://digital.kenyon.edu/honduras/28259>

This Field Notes is brought to you for free and open access by the Anthropology at Digital Kenyon: Research, Scholarship, and Creative Exchange. It has been accepted for inclusion in Four Valleys Archive by an authorized administrator of Digital Kenyon: Research, Scholarship, and Creative Exchange. For more information, please contact noltj@kenyon.edu.

Angela is #14

1-Feb-2000

Operation: 158

Lot: 001

Sq. 1 1m wide by 6m long trench set structure 54, So. face on axis runs 6m S-N to Summit. (Oriented 7°), links to 15A. ~~Pot~~

Purpose: To Reveal Final Phase Architecture

Square 1 is the Southern most 1x1 m in 158 original

158/ Lot 002

Chat arranged in small bag

Part of Lid/Bottle with Etched Design

Pottery Fragments; 1 cutting tool / hide scraper? (stone)

158/ Lot 003

Wall on N ~~End~~ ^{potter}, about 20cm or more on top, encloses at 42m BG. from SE corner - continuing in ~~unwalled~~ ^{unwalled} portion

158/Lot 004

1m wide by 55cm defined by presence of wall often 60cm-70cm goal is to deepen to determine depth of wall, as predicted (by Pot) very shallow

2-Feb-2000

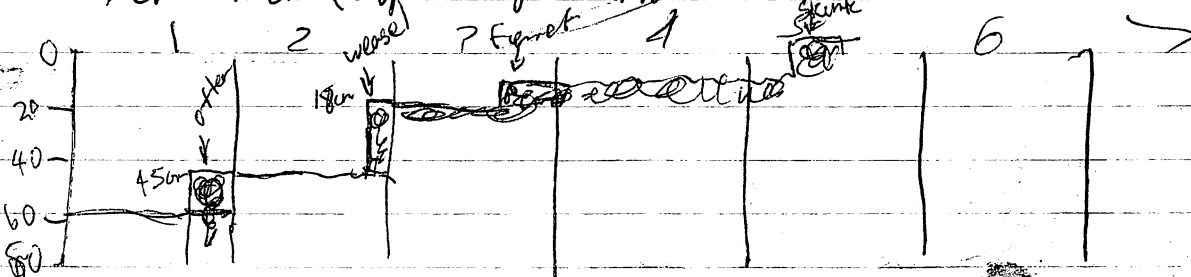
158/Lot 005

(to North)

Sq. 2 1x1 sq. in #2 1m from SE corner of original sq. 1 scattered rocks; probably fall

158 Lot 005

Wall discovered in Northern most 10cm of square at depth of 18cm-45cm (depth of pit) named "weasel"



2 - Feb - 2000

- sq. 3 Operation 15B Lot 007
 1x1m, square 3 is 2 sq. North of original sq. 1
 depth of 20cm determined by height of weasel
 weasel is at least 40cm wide, and may be
 start of paved terrace, though paving stones are
 upset (if that is what they are). A wall may start at
 40cm S. of N. End of sq. 3, though uneven and uncertain
 - wall is certain and ferret height most likely 10cm
 below gs. from NW corner of sq. 3 area between
 weasel and ferret paved with stones - pushed by
 ferret Northern most 45cm of sq. 3
 square taken down to 25cm bgs in SE corner of sq. 3
 (45cm bgs. in NE corner)

3 - Feb - 2000

- sq. 4 Operation 15B Lot 008
 Nothing found many stones, no pattern, frustrating!
 op. 15B Lot 009
 sq. 5 30cm Not end of square start of wall "skunk", probably
 ⊥ to trench in past but some slide on west end, stone
 on west end super surface, most sub surface, at least 25cm
 wide 38cm deep in SE corner of sq. 5 skunk is -5 to +5
 b.g.s., high end to West.

- sq. 6 Operation 15B Lot 010
 near summit of mound - clearing operation today, more
 possible mañana.

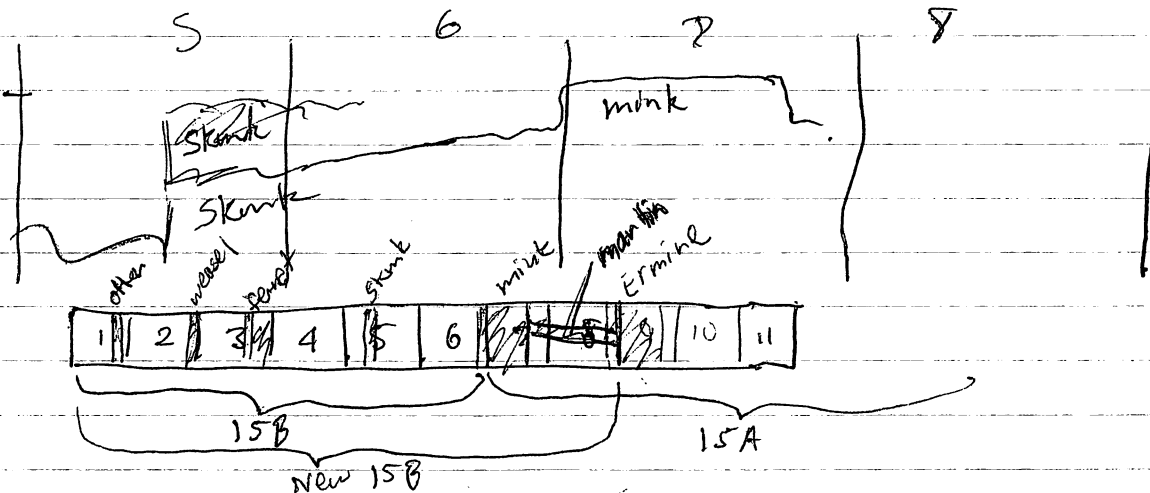
4 - Feb - 2000

- sq. 6 Operation 15B Lot 010 cont
 continued clearing in 0-20cm depth from NW corner
 Op 15B Lot 011 20+10cm from NW
 sq. 7 Op 15B Lot 012 in 15a
 0-10cm from NW corner (summit)

Op. 158 Lot 013

Sq. 7.

This square is same as square 1 in 15A (southernmost of original 15A) Wall (mink) occupies southernmost 80cm of square as well as N 10cm of sq. 6
Wall at ~~surface~~ height, N 20cm dug to 30cm depth



508

Op 158 Lot 013

This square is #8 directly N of #1, original #2 in 15A
~~0-20~~²⁰ (due to time constraints) measured from NE corner
 of sq. 8

February 8, 2000

continue 158 0120 to 28 cm b.g.s.

Op 158 Lot 014

Op 156 Lot 014 'Hall "Martin" perpendicular to mint and
25- bgs. ermine 25 cm bgs of NW corner of sq.
wall in N 15 cm of sq. 8' x 8'
"ermine" at surface and approx 90 cm wide

sq. 4

Op 158 Lot 015

formerly sp. 3 in 15A, wall in S 70 cm

Op 158, Lot 016

54.10

ex 158 lot 016
formerly sq. 4 in KA, courtyard, clear drvt 0-20m

Op 158, Lot 017

29.11

formerly sq. 5 in 15A, courtyard, clear dirt 7-20cm

continue tomorrow cleared to 20 cm bgs from NW corner of plot

158 08

Sq. 10

clear 10-25 cm bgs from NW corner of 10

sq. 1 15B/001 - 0-20cm BGS measured from SE corner in sq. 1 (Southernmost in original 15B)

15B/002 - 20cm-40cm BGS measured from SE corner in sq. 1

15B/003 - 40-60cm measured from SE corner in sq. 1

15B/004 - Presence of other feature (wall) in N end of sq. 1 reduces 004 to 1m (E/W axis) by 55cm (N/S axis) 60-70cm b.g.s.

sq. 2 15B/005 - Sq. 2 is 1 m to the North of Sq. 1
0-20cm b.g.s measured from SE corner of sq. 2

15B/006 - 20-45cm (depth of other) in a 1x80cm square, presence of wall "weasel" in Northern most 10cm set new level for next square⁽³⁾ at 17cm-20cm depth

sq. 3 15B/007 - 0-20cm ^{from SE corner} (depth of weasel) in a 1x60cm (S to N) box limited by presence of wall "ferret" height of approx 20cm - 10cm below NW corner of sq. 3

sq. 4 15B/008 - 0-25 cm b.g.s. in SE corner of sq. 4
depth determined by approx height of ferret (0-45 in NE corner)

sq. 5 15B/009 - 0-~~30~~ ^(SE corner) cm from SE corner of sq. 5
1x35cm to North, stopped by "skunk"

sq. 6 15B/010 - Define rocks, but don't move any 1x/square no more than 20cm excavated

15B/011 - 20-30 cm, defined rocks, slid wall found

sq. 7 15B/012 - 0-10cm (same as 15A/square 1)

Wall (mink) in 80cm, trench in N 20cm deep 0-30cm

sq. 8 15B/013

sq. 9 op 15B lot 019

23-45 cm bgs from NW corner of sq. 9 excavate only N 25 cm because of wall "ermine" - in order to find wall bottom
ermine is 40 cm tall, surface to 40 cm bgs at face

sq. 11 op 15B lot 020

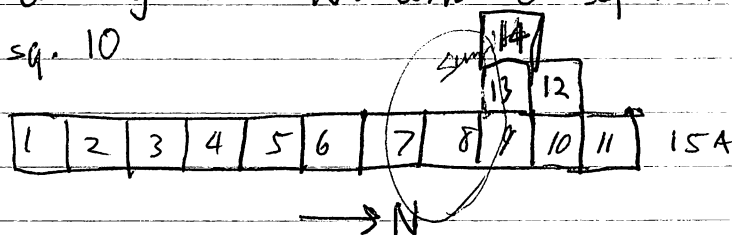
20-40 cm bgs from NW corner of sq. 11

op 15B lot 021

40-60 cm bgs

sq. 12 op 15B lot 022

0-20 cm bgs from NW corner of sq. 12. sq. 12 is directly W of sq. 10



op 15B lot 023

20-40 cm bgs from NW corner of sq. 12

sq. 13 op 15B lot 024

0-20 cm bgs from NW corner, excavate to look for possible wall but none, excavation limited to N 40 cm because of ermine

(025 is backlot)

op 15B lot 026

20-40 cm bgs from NW corner

~~removed 2 top wall stones that is~~

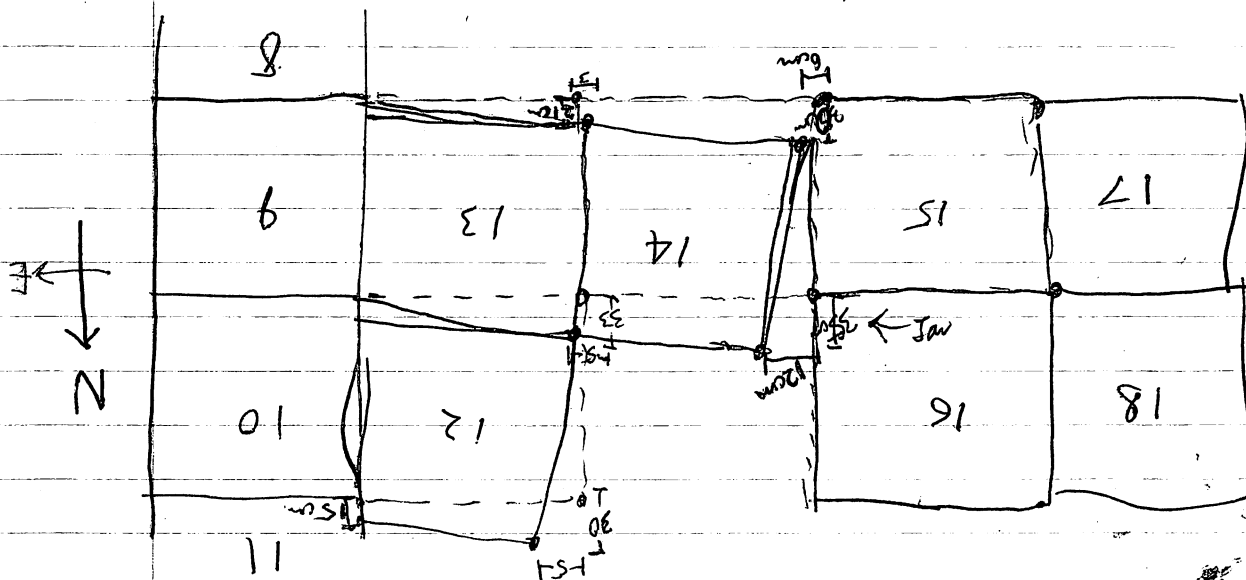
11/Feb/2000

sq. 14 op 15B lot 027

0-20 cm bgs from NW corner

continued presence of wall "ermine" in S 40 cm

sq. 14 Op 158 Lot 028 20-40 cm bgs in NW corner
because of stakes moved 12, 13, 14 are off



re-alignment of sq. 15 to be perpendicular to original trench

sq. 15 Op 15B Lot 024 U-~~20~~cm bgs. from NW corner

sq. 16 Op 15B lot 030 0-20 cm bgs from NW corner
dig to allow depth check on "ermine" in sq. 15

Sp 15B Lot 031 20-40 cm bgs. from NW corner
Human teeth and jawbone found in SE corner of 16 at
depth of approx 40 cm bgs, continue excavation tomorrow

14/Feb/2000

Clear off dirt in 16 Very Carefully

I continue work, while A+R clear 17

Sq. 17 0-20 bas in sq. 17 from NW corner

Op 150⁵ Lot 032 0-10 cm

sq. 16 seems to be only jambone, where, as rest - cleaned
as best I could, will take measurements and photograph

sq. 16 15B/031 - Notes on Burial
 Height of wall ERMINE: 84
 Base of wall ERMINE: 112
 Level of ground ^{surface}: 64 (66 cm S of N trench face)
 Level of excavation (jawbone): 100
 Distance from ERMINE to jaw: 54 (N)
 Height of NW corner gs: 56
 Dx from N trench wall: 67
 Dx from ~~E~~ trench wall: 12
 length (N to S): 10 cm
 (E to W): 7 cm

15/Feb/2000

sq. 15 Dep 15B Lot 033

Remove rocks from N 20 cm, depth 10-40 cm to expose face ERMINE, large roller discovered, along w/ teeth, probably from jaw in 15B/031

sq. 18 15B/034

0-20 cm bgs from NW corner of sq. 18, due w of 16
 not much but shreds, 4th projectile point

15B/035

20-40 cm bgs from NW corner

15B/036

40-50 cm bgs from NW corner to expose bottom of wall
 POLECAT

Bones discovered, possibly human in middle of E face,
 intrude onto square 16, maybe same person, cleaned off,
 will pursue tomorrow

16/Feb/2000

15B/037

0-20 cm bgs from NW corner in sq. 19, space to dig in sq. 20

4/Feb/2000

158/013

sq. 8 0-25 cm bgs from NE corner of sq. 8 (originally #2 in 15A)
Summit of structure - finished on 8/Feb/2000

8/Feb/2000

158/014 25-40 cm as measured from NE corner of sq. 8,
wall MARTIN within, perpendicular to ERMINE and MINK

sq. 9 158/015 surface clean of S 70cm, 0-20 cm in N 30cm, from
NW corner of sq. 9 (sq. 3 in 15A)

sq. 10 158/016 0-10 cm bgs from NW corner of sq. 10 (15A, sq. 4)

sq. 11 158/017 0-20 cm bgs from NW corner of sq. 11 (15A, sq. 5)
possible wall in N face, "BRITTNEY"

sq. 10 158/018 10-25 cm bgs from NW corner of sq. 10

158/019
sq. 9 20-45 cm bgs from NW corner of sq. 9, excavate only N 25 cm
because of wall ERMINE is 75 cm

sq. 11 158/020 - 20-40 cm bgs from NW corner of sq. 11

158/021 40-60 cm bgs from NW corner of sq. 11

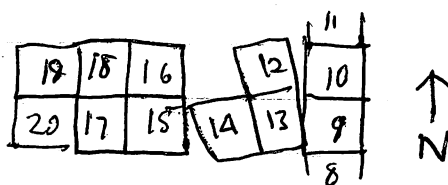
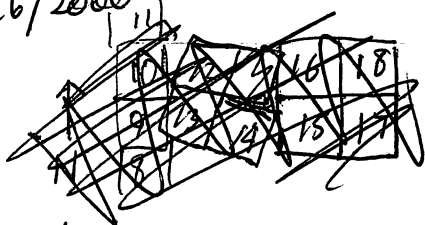
sq. 12 158/022 0-20 cm bgs ^{from NW} in sq. 12, being due W of sq. 10

158/023 20-40 cm bgs ^{from NW} in sq. 12

sq. 13 158/024 0-20 cm bgs in sq. 13 from NW corner, sq. immediately
W of sq. 9, ERMINE is 60 cm

80 158/025 Backdirt

16/Feb/2000



sq. 16 158/031

bones discovered in 158/036, but in 158/031, probably femur, tibia, most likely deer, maybe human:

Height of wall ERMINE: 64

Base Wall ERMINE: 118 (NW corner)

Level of ground surface: 67

Level of excavation: 117 (bones)

Distance from ERMINE to bones: 83

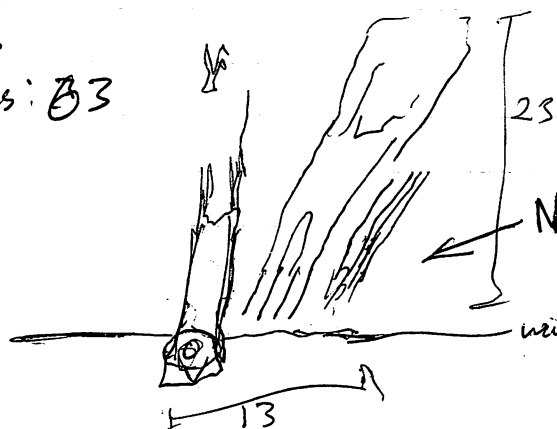
Height of NW corner: 118

Dx from N trench wall: 53

Dx from W trench wall: 0

N-S dimension: 13

E-W dimension: 23



158/038

sq. 20 0-10cm bgs (surface clean) from NW corner

158/039

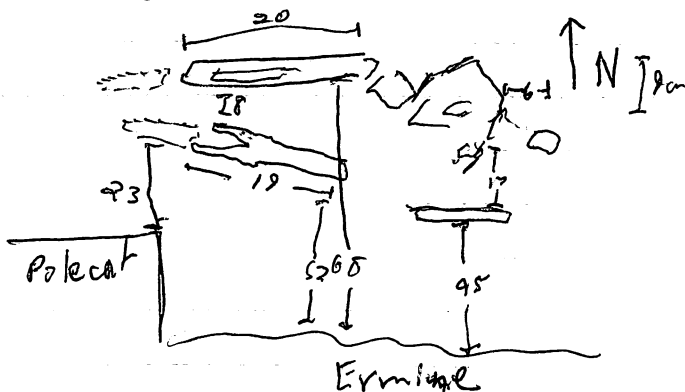
sq. 16 40-45 cm bgs in sq. 16, more of skeleton, uncovered leg, part pelvis, and some other bones, still incomplete. work on mañana

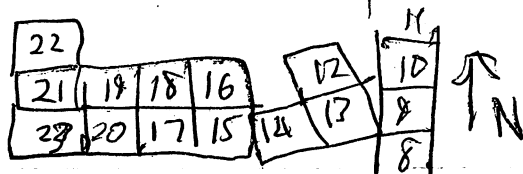
17/Feb/2000

sq. 19 158/040 20-40 cm bgs from NW corner

sq. 16. photographed,

Orientation - 328°
of burial





17/Feb/2000

POLECAT (sq. 18, 17) originally entered 10 on E into 16/15, corner collapsed, and not removed for cutaway of ERMINE/POLECAT Join.

sq. 16 15B/041

10-40 cm, corner of wall POLECAT, built in front of ERMINE, separate structures

sq. 21 15B/042 0-20 cm bgs in square 21, possible wall surface clean S half, but down to 20 cm bgs in NE quadrant to check for wall, whole N half

15B/043 ~~20-40 cm bgs in the~~ ~~quadrant~~ ^{E half}

15B/042 ^{0-20 cm} entire square, wall SMALL-CLAWED found in ~~W~~ 40 cm of square at 19 cm bgs.

15B/044 40-~~60~~³⁰ cm bgs

18/Feb/2000

sq. 22 15B/045 0-20 cm bgs from NW corner of square 22
Continuation of SMALL-CLAWED

sq. 23 15B/046 0-40 cm bgs from NW corner of sq. 23, looking for joining of SMALL-CLAWED and either POLECAT or ERMINE
Personally, I don't think POLECAT is real, though Pat thinks so, Ed is beginning to agree with me - we shall see.

sq. 20 15B/047 10-40 cm bgs from NW corner, clear of tumble to ~~expose~~ wall in S 10 cm, clear top of square, I think that's it for the week and the sub-op!, just clean up, new sup-op starting E of sq. 10 Monday.

10/Feb/2000

sq. 13 15B/026 20-40 cm bgs from NW corner, wall ERMINE in S
60 cm of square 13

11/Feb/2000

sq. 14 15B/027 0-20 cm bgs from NW corner of sq. 14, ERMINE
in S 40 cm

15B/028 20-40 cm bgs from NW corner of sq. 14

sq. 15 15B/029 0-10 cm bgs in square 15, top of ERMINE w of 14

sq. 16 15B/030 0-20 cm bgs from NW corner, due N of 15

15B/031 20-40 cm bgs from NW corner in sq. 16

sq. 17 15B/032 0-10 cm bgs from NW corner of 17, due w of 15
summit ERMINE

sq. 15 15B/033 0-40 cm bgs from ~~structure~~ ^{NW corner} of sq., only N 20 cm to
clear rock from N face of ERMINE

sq. 18 15B/034 0-20 cm bgs from NW corner of sq. (due w of 16)

sq. 15B/035 20-40 cm bgs from NW corner in sq., POLECAT at base of
ERMINE

15B/036 40-50 cm bgs from NW corner in sq. to find base of wall

sq. 19 15B/037 0-20 cm bgs from NW corner in sq.

sq. 20 15B/038 0-10 cm bgs from NW corner in sq. 20, (w of 17)

sq. 16 15B/039 40-45 cm bgs from NW corner of sq., only excavated area
remains

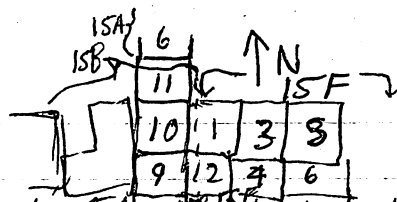
18/Feb/2000

Op 15F Lot 001

New sub-op! Still on good of 54 ^{though}. And it's still Friday, but that's cool.

0-20 cm bgs in sq. 1 of 15F

some obsidian, shards, nothing of note



21/Feb/2000

sq. 1 15F/002 20-40 cm ^{NE corner} bgs. in sq. 1 of 15F, go to 90m then move to sq. 2

sq. 15 15E/031 0-20 cm bgs from NW corner of sq. 15, due W of sq. 14 in 15E, clear dirt to expose cobbles, continue W to look for edge.

- projectile pt. - ~~Flower~~ stamp

sq. 2 15F/003 0-20 cm bgs from NE corner of sq. 2 in 15F, S of sq. 1 ERMINE should be here, ERMINE continues in S 65 cm of sq. 1

sq. 16 15E/032 0-20 cm bgs from NW corner of sq. 16, due W of sq. 15 clear dirt to expose rocks, possible platform corner in 15, look for in 16

- Projectile Pt.

15F/004 20-40 cm bgs from NE corner, only N 35 cm b/c of wall ERMINE in place

sq. 4 15F/005 0-20 cm bgs from NE corner, allow space for work in sq. 4

15E/033 20-40 cm bgs from NW in sq. 16, clear dirt to rock

sq. 4 15F/006 0-20 cm bgs from NE corner, look for continue of ERMINE

22 Feb/2000

15E/034 40-50 cm bgs from NE corner, take E to look for edge

15F/007 20-40 cm bgs from NE corner in sq. 2

18/Feb/2000 (cont.)

158/040 20-40 cm bgs from NW corner of sq. 18 in structure 54

158/041 SE 15x15 cm square 16 in structure 54, 10-40 cm bgs from corner of wall POLECAT

158/042 0-20 cm bgs in sq. 21, due W of sq. 18 in structure 54

158/043 20-40 cm bgs in sq. 21 of structure 54

158/044 40-50 cm bgs in sq. 21 of structure 54

158/045 0-20 cm bgs from NW corner of sq. 22 in structure 54, N of sq. 21

158/046 0-40 cm bgs from NW corner of sq. 23 in structure 54, only N 20 cm of square dug, pushed back to wall POLECAT

158/047 0-40 cm bgs from NW corner of sq. 20 in structure 54, scrape to clear wall POLECAT

15F/001 0-20 cm from NE corner of sq. 1 in structure 54, E of sq. 10 in 158

21/Feb/2000

15F/002 20-40 cm bgs from NE corner of sq. 1 in structure 54

15E/031 0-20 cm bgs from NW corner of sq. 15 in 15E, W of 14

15F/003 0-20 cm bgs from NE corner in sq. 2 (S of sq. 1) in structure 54

15F/004 20-40 cm bgs from NE in sq. 2 in structure 54, N 35 cm only because of wall ERMINE

15F/008 20-40 cm bgs from NE corner in sq. 3, allow space for digging deeper in sq. 4 cut short by rain in am.

23/Feb/2000

15E/035 0-20 cm bgs in sq. 17, due S of 16

-Atcha → dig to look for plaza edge

-Gr. Obsd

15F/008 20-40 cm bgs from NE in sq. 4, S of sq. 3
look for edge of ERMINE, possible corner

15F/010 0-20 cm bgs in sq. 5 - to allow dig space in sq. 6

15E/036 0-20 cm bgs in sq. 18, what the h is going on here? where do the big stores come from?

~~Atcha (left) found here at 20 cm bgs~~

~~Green Obsidian~~ - huaso (arrow)

15F/011 20-40 cm bgs in sq. 5

Nice weather today, cloudy at first, and muddy, but the sun is out now and that makes me happy. Yesterday in the rain I did not want to work. Will take sq. 17 (15E) back (S) to look for pattern after that, not sure what Ed wants done...

15F/012 0-20 cm in sq. 6, where will ERMINE end?

15E/037 20-50 cm in sq. 17, looking for patterns, moving S in 20 cm or 30 increments (finish lot on 24)

15F/013 20-40 cm in sq. 6, can't find ERMINE, end of?

24/Feb/2000 found corner of ERMINE, 10 cm E in sq., earlier than thought will follow ERMINE to Mink (need new name for E face), then take OTTER to E (finish lot on 24)

15F/014 0-20 cm bgs in sq. 7, surface clean summit.
new wall SPOTTED (skunk)

21/Feb/2000

sq. 16 ISE/032 0-20 cm bgs from NW corner of sq. 16 (W of sq. 15)

sq. 3 ISF/005 0-20 cm bgs from NE corner of sq. 3 in ISF in structure 54 (E of sq. 1)

ISE/033 20-40 cm bgs from NW corner in sq. 16

ISF/006 0-20 cm bgs from NE corner in sq. 4 (E of sq. 2) in structure 54

22/Feb/2000

ISF/007 20-40 cm bgs from NE corner in sq. 2 of structure 54

ISE/034 40-50 cm bgs from NW corner in sq. 16 of plaza ANGELA

ISF/008 20-40 cm bgs from NE corner of sq. 3 in structure 54

23/Feb/2000

ISF/009 20-40 cm bgs from NE corner of sq. 4 in structure 54

ISE/035 0-20 cm bgs from NW corner of sq. 17 (S of sq. 16) in plaza ANGELA

ISE/036 0-20 cm bgs from NW corner of sq. 18 (S of 15, E of 17) in plaza ANGELA

ISF/010 0-20 cm bgs from NE corner of sq. 5 (E of sq. 3) in structure 54

ISF/011 20-40 cm bgs from NE corner of sq. 5 (E of 3) in structure 54

ISE/037 20-50 cm bgs from NW corner of sq. 17 in plaza ANGELA

ISF/012 0-20 cm bgs from NE corner of sq. 6 (S of 5, E of 4) in structure 54

15F/015 0-20 cm bgs in sq. 8, to expose face of wall SPOTTED snake den (or something) beneath ~~here~~ here, quite a bit of space ^{rat}

15F/016 20-40 cm bgs in sq. 8, same reasons, work here is going very fast, few artifacts

15F/017 0-20 bgs in sq. 9, surface clean

15F/018 0-20 cm bgs in sq. 10, work to expose more of SPOTTED, then Ed says move to work on OTTER

15F/019 20-40 cm bgs in sq. 10

found more human remains, teeth, jaw, others, in better condition than burial in 15B, but where then is the rest of him/her? possibly out of context, maybe displaced due to rats)

15F/020 0-20 cm bgs from SE corner in sq. 11

15E/038 15- cm bgs ^{in sq. 18}, find plaza floor

15F/021 20-40 cm bgs from sq. 11

strange group of rocks in NE corner, could be wall?

15F/022 40-60 cm bgs from sq. 12

25/Feb/2000

continue and finish 15E/038 and 15F/022, for some reason OTTER just seems to end! Possible other wall about 30 cm E from OTTER and Running L

15F/023 0-20 cm bgs in sq. 17, find traces of OTTER

15F/024 0-20 cm bgs in sq. 13, cleared dirt
Plaza done for now

15F/013 20-40 cm bgs from NE corner in sq. 6 of structure 54

15F/014 0-20 cm bgs from NE corner in sq. 7 of structure 54
(S of sq. 4)

15F/015 0-20 cm bgs from NE corner in sq. 8 of structure 54
(S of 6, E of 7)

15F/016 20-40 cm bgs from NE corner in sq. 8 of structure 54

15F/017 0-20 cm bgs from SE corner of sq. 9 (S of sq. 7) in
structure 54

15F/018 0-20 cm bgs from SE corner of sq. 10 (S of 8, E of
sq. 9) in structure 54

15F/019 20-40 cm bgs from SE corner of sq. 10 in structure 54

15F/020 0-20 cm bgs from SE corner of sq. 11 (E of sq. 1 in
15B) in structure 54

15F/021 20-40 cm bgs from SE corner of sq. 11 in structure 54

15F/022 40-60 cm bgs from ~~SE~~ SE corner of sq. 11 in structure 54

15E/038 15-30 cm bgs from SE corner of sq. 18 in plaza

25/Feb/2000

15F/023 0-20 cm bgs from SE corner of sq. 12 (N of sq. 11)
in structure 54

15F/024 0-20 cm bgs from ~~SW~~ corner in sq. 13 (S of 2, W of 7)
in structure 54

15F/025 20-40 cm bgs in sq. 12 This is getting annoying, tumble, and ill defined walls. slow time of it here. A+R went through about 10 lots yesterday - it was amazing!

15E on hiatus, but not closed yet.

15F/026 40-60 cm in sq. 12 - What's going on here? Possible wall on E face, but if so, pretty "sloppy" one. Where is WEASEL as well? large stones encountered on "floor" behind OFIER

15F/027 0-20 cm bgs in sq. 15, trying to find weasel, then Ferret this is a mess!

15F/028 20-30 cm bgs in sq. 13 to dig to floor (I think anyway) often not even that far down

15F/029 0-20 cm bgs in sq. 14 clear topsoil, expose MINK N face and corner w/ SPOTTED

15F/030 40-60 cm bgs in sq. 2 of 15B, go down to try and find stone floor - continues from sq. 12 (15F)

15F/031 0-20 cm bgs in sq. 16, clear dirt only for today.

28/Feb/2000

Continue 15F/031, plotted new squares (4), though I hope they are needed, there are a million people here for work

15F/032 0-20 cm bgs in sq. 18 try to find out what if any thing this group of stones is in E face of sq. 11

15F/033 0-20 cm bgs in sq. 16, clear dirt, look for top SKUNK

15F/034 20-40 cm bgs in sq. 19

15F/035 0-20 cm bgs in sq. 20, what the hell is going on here, what are all these rocks?

15F/036 0-20 cm bgs in sq. ~~20~~ 18, clean surface, and work N from level of FERRET

15F/037 0-20 cm bgs in sq. 22, lookin' for platform

15F/038 20-40 cm bgs in sq. 22

15F/039 0-20 cm bgs in sq. 23, following this mass of rock

15F/040 20-40 cm bgs in sq. 23

15F/041 ~~15~~-40 cm bgs in sq. 17, clean to expose skunk, clean at N face and work back

15F/042 40-60 cm bgs in sq. 18, cut N to find edge of stone feature

15F/043 0-10 cm bgs in sq. 24, possible wall here on edge of sq. 18, clean 24, 25, then get Ed or Pat

15F/044 0-10 cm bgs in sq. 25, surface clean

15F/045 20-60 cm bgs in sq. 20, scrape into S from sq. 18, looking for wall, man, have found one!

15F/046 0-20 cm bgs from sq. 27, dig down to trace ~~SPOTTE~~ SPOTTE, continue to sort out mess in 29, 25

15F/047 0-10 cm bgs in sq. 21, surface clean

ISF/025 20-40 cm bgs from SE corner in sq. 12 of structure 54

ISF/026 40-60 cm bgs from SE corner of sq. 12 in structure 54

ISF/027 0-20 cm bgs from SE corner of sq. 15 (N of 12) in structure 54

ISF/028 20-30 cm bgs from SW corner of sq. 13 (in structure 54

ISF/029 0-20 cm bgs from NE corner of sq. 14 (S of 13, E of 8) in structure 54

ISF/030 40-60 cm bgs from SE corner of sq. 2 in 15B,
(N of sq. 1 (15B), W of sq. 12 (15F)) in structure 54

ISF/031 0-20 cm bgs from SE corner of sq. 16 (S of 14) in structure 54

ISF/032 0-20 cm bgs from SE corner of sq. 19 (E of 11, S of 20) in structure 54

ISF/033 0-20 cm bgs from SE corner of sq. 17 (S of 16) in structure 54

ISF/034 20-40 cm bgs from SE corner of sq. 18 in structure 54

ISF/035 0-20 cm bgs from SE corner of sq. 20 (N of 19, E of 12) in structure 54

ISF/036 0-20 cm bgs from SE corner of sq. 18 (N of 15, S of 17) in structure 54

ISF/037 0-20 cm bgs from SE corner of sq. 22 (E of sq. 19) in 54

29/Feb/2000

15F/048 20-40 cm bgs in sq. 27

15I/001 0-20 cm bgs in sq. 1, start of new sub-op for S face of 54, too much mess in E face, following SPOTTED down (Sward) in attempt to figure out what's going on. will follow OTTER to W in 15I.

15I/002 20-40 cm, lookin' for OTTER.

15F/049 0-20 cm bgs in sq. 28, follow SPOTTED, still there, but not as nice

15I/003 40-60 cm bgs in sq. 1, lookin' for OTTER (Yay!) (Boo!) There's nothing! It ends on the other side, move up one square to WEASEL hunt.

15I/004 0-20 cm bgs in sq. 2

15F/050 20-40 cm bgs in sq. 28, only in E half, possible other line, highly suspicious anyway, WALL MUSTELAE

15I/005 20-40 cm bgs in sq. 2, lookin' for WEASEL, no definitive sign, will go down another 20 cm and cut N

15I/006 40-60 cm bgs in sq. 2, ibid

15F/051 0-20 cm bgs in sq. 28, where are all these walks going?

2/Mar/2000

15F/052 20-40 cm bgs in sq. 28, removed top of SPOTTED, since had slid down to find clear line finish up 15I/006 as well

ISF/038 20-40 cm bgs from SE corner of sq. 22 in structure 54

ISF/039 0-20 cm bgs from SE corner of sq. 23 (N of 22, E of 20) in structure 54

ISF/040 20-40 cm bgs from SE corner of sq. 23 in structure 54

ISF/041 ~~15~~-40 cm bgs from SE corner of sq. 17 in structure 54

ISF/042 40-60 cm bgs from SE corner of sq. 18 in structure 54

ISF/043 0-20 cm bgs from SE corner of sq. 24 (E of 18, N of 21) in structure 54

ISF/044 0-10 cm bgs from SE corner of sq. 25 (E of 17, N of 24) in structure 54

ISF/045 20-60 cm bgs from SE corner of sq. 20 in structure 54

ISF/046 0-20 cm bgs from SE corner of sq. 27 (S of 10, E of 26) in structure 54

ISF/047 0-10 cm bgs from SE corner of sq. 21 (E of 15, N of 20) in structure 54

24 Feb 2000

ISF/048 20-40 cm bgs from SE corner of sq. 27 in structure 54

ISI/001 0-20 cm bgs from SW corner of sq. 1 (W of sq. 1 in ISB) in structure 54

ISI/002 20-40 cm bgs from SW corner of sq. 1 in structure 54

ISF/049 0-20 cm bgs from SE corner of sq. 28 (S of 27, E of 25) in structure 54

AP-00 18-23

15I/003 40-60 cm bgs from SW corner of sq. 1 in structure 54

15I/004 0-20 cm bgs from SW corner of sq. 2 (W of sq. 2 [15B], N of sq. 1) in structure 54

15F/050 20-40 cm bgs from SE corner of sq. 28 in structure 54

15F/051 0-20 cm bgs from SE corner of sq. 29 (~~W~~ of sq. 28, E of 24) in structure 54

15I/005 20-40 cm bgs from SW corner of sq. 2 in structure 54

15I/006 40-60 cm bgs from SW corner of sq. 2 in structure 54

2/11/2000

15F/052 20-40 cm bgs from SE corner in sq. 29 in structure 54

15I/007 0-20 cm bgs from SW corner of sq. 3 (N of 2) in structure 54

15F/053 0-20 cm bgs from SE corner of sq. 30 (S of 28, E of 21) in structure 54

15I/008 20-40 cm bgs from SW corner of sq. 3 in structure 54

15F/054 20-40 cm bgs from SE corner of sq. 20 in structure 54

15I/009 40-60 cm bgs from SW corner in sq. 3 of structure 54

15F/055 0-20 cm bgs from SE corner of sq. 23 in structure 54

15I/010 0-20 cm bgs from SW corner of sq. 4 (W of 3) in structure 54

15F/056 20-40 cm bgs from SW corner of sq. 23 in structure

Don Dimas (tall)
Don Beto
AP-00-11-24

Once again a wall (this time WEASEL) ~~finds~~ out. move north
and look for FERRET, have to make poor Antonio + Rafael
move more dirt

ISF/053 0-20 cm bgs in sq. 30, continue trace of MUSTELAE/
SPOTTED, where does it end?, expose surfaces

ISI/007 0-20 cm bgs in sq. 3, try and follow FERRET, hope
it keeps going.

ISF/054 20-40 cm bgs in sq. 30, MUSTELAE may end here

ISI/008 20-40 cm bgs in sq. 8, FERRET continues!

ISI/009 40-60 cm bgs in sq. 3, FERRET, how low can you go?

ISF/055 0-20 cm bgs in sq. 23, only this time, taking rocks out!
Yay, find out if there is other wall, corner of
MUSTELAE in sq. 30

ISI/010 0-20 cm bgs in sq. 4, following FERRET

ISF/056 20-40 cm bgs in sq. 23

ISI/011 20-40 cm bgs in sq. 4
31 Mar 2000

ISF/057 0-20 cm bgs in sq. 20, this time stones as well, follow corner
wall (FERRET)

ISF/058 20-40 cm bgs in sq. 20, follow wall down to base, check
for WEASEL

ISI/012 20-40 cm bgs in sq. 5, follow wall FERRET, should
end in 1-2 m (corner)

15I/013 20-40 cm bgs in sq. 5, following FERRET

After a frustrating beginning I have walls to follow, so it's all good. Good week, and fast, but weekends are great too! Stress in group is high, I think people need the break.

15I/014 40-60 cm bgs in sq. 4, find base of FERRET

15I/059 20-40 cm bgs in sq. 15

Have found steps in 15I/014 at angle to FERRET, which may be ended. will move up (N) of sq. 5, see if FERRET corners. FERRET traced to corner with SPOTTED, and MUSTELAE, WEASEL 13" step. Outlined battle plan with Ed for finishing up E face, clearing, solving loose ends, etc.

15F/060 10-40 cm bgs in sq. 20, clear this junk out.

15I/015 0-20 cm bgs in sq. 6, lookin for corner from FERRET

15I/016 20-40 cm bgs in sq. 6, take only middle 33 cm out, possible confluence of many walls, tricky!

15F/061 looking at SKUNK, 10-40 cm bgs. From conjunction of 17, 18, 20, 25

6/Mar/2000 Excavations interrupted at lunch by armed robbery. On Friday - Will try to continue today, backpack taken, many supplies missing. Get for tomorrow - dustpan (2) - bags 4x8, 7x14, 10x16, 12x18 - ~~dark~~ broom - line level - Backpack - compass - blue marker - white out

Also bags of shards left in trench no longer there, make sure in VJ tonight

15I/017 0-20 cm bgs in sq. 7, try to make sense of sq. 6

Think we have finally hit back of SPOTTED, moved DB and DD to summit clearing in WQ quadrant

15I/018 0-20 cm bgs in sq. 12 (N of sq. 11), summit clear, find ERMINE and MINK

15I/019 0-20 cm bgs in sq. 8 (~~sq. 8~~), wall found in N face of sq. 7, possibly SKUNK, checking out in sq. 8

15I/020 20-40 cm bgs in sq. 12, carefully go down in E face because of new wall found FISHER running N/S between MINK and ERMINE, will take deeper to allow depth check on MARTIN

15I/021 0-20 cm bgs in sq. 9, try to find where edge of SKUNK is, not a happy wall

15I/022 0-20 cm bgs in sq. 11, surface clean

We're going home after 12 today so people can call parents and email school. Know what? I wish I was staying. I like it out here, with my friends. I have no intention of leaving Honduras til May 28th

8/Mar/2000

15I/023 0-20 cm bgs in sq. ~~12~~, surface clean

15I/024 ~~0-20~~ cm bgs in sq. 12, find depth of MINK and ERMINE, as well as FISHER

15I/025 20-40 cm bgs in sq. 9, find if wall continues

15I/026 0-20 cm bgs in sq. 11, surface clean

15I/011 20-40 cm bgs from SE corner of sq. 4 in structure 54
3/Mar/2000

15F/057 0-20 cm bgs from SE corner of sq. 24 in structure 54

15F/058 20-40 cm bgs from SE corner of sq. 24 in structure 54

15I/012 0-20 cm bgs from SW corner of sq. 5 (W of 4)
in structure 54

15I/013 20-40 cm bgs from SW corner of sq. 5 in structure 54

15I/014 40-60 cm bgs from SW corner of sq. 4 in structure 54

15F/059 20-40 cm bgs from SE corner of sq. 15 in structure 54

15F/060 10-40 cm bgs from SE corner of sq. 20 in structure 54

15I/015 0-20 cm bgs from SW corner in sq. 6 (N of sq. 5) in
structure 54

15I/016 20-40 cm bgs from SW corner in sq. 6 in structure 54

15F/061 10-40 cm bgs from SE corner of sq. 17 in structure 54
area excavated in sq. 17, 18, 24, 25, due to nature of
scrape at conjunction of 4 squares

6/Mar/2000

15I/017 0-20 cm bgs from SW corner of sq. 7 (E of sq. 6, N
of sq. 4) in structure 54

15I/018 0-20 cm bgs from SW corner of sq. 12 (N of sq. 11)
in structure 54

15I/019 0-20 cm bgs from SW corner of sq. 13 (N of 3, E of 7)
in structure 54

15I/027 0-20 cm bgs in sq. 10, surface clean
 area in sqs. 12+16 seems to be fill between MINK and ERMINE
 wall found in sq. 16, seems to be Wedge of same
 room, name LUTRA, continue to S.

15I/028 0-20 cm bgs in sq. 16, surface clean, pursue LUTRA
 And MINK

15I/029 0-20 cm bgs in sq. 14

15I/030 20-40 cm bgs in sq. 16, dig down to find base of
 walls, it is now seemly that LUTRA continues to wall in
 sq. 14, very strange, like a projection or something, I really
 need to draw this. I think next I will move up to sq. 13, 12,
 and 18, then E into 15 and LUTRA

15I/031 0-20 cm bgs in sq. 17 ~~the~~, dig down to walls, look
 for corner

15I/032 0-20 cm bgs in sq. 15, finish exposing wall LUTRA

15I/033 20-40 cm bgs in sq. 15, ibid.

15I/034 0-20 cm bgs in sq. 20; surface clean

15I/035 0-20 cm bgs in sq. 18

15I/036 20-40 cm bgs in sq. 13, take away SW corner
 to expose if wall present

27/Mar/2000

15I/037 0-20 cm bgs in sq. 14, continue trace of wall from
 sq. 20 - STOUT

- 15I/020 20-40 cm bgs from SW corner of sq. 12 in structure 54
- 15I/021 0-20 cm bgs from SW corner of sq. 9 (N of sq. 8) in structure 54
- 15I/022 ~~0-20~~ ⁰⁻²⁰ cm bgs from SW corner of sq. 12 in structure 54
8/Mar/2000
- 15I/023 0-20 cm bgs from SW corner of sq. 13 (N of 7, W of 9) in structure 54
- 15I/024 40-60 cm bgs from SW corner of sq. 12 in structure 54
- 15I/025 20-40 cm bgs from SW corner of sq. ~~12~~ 9 in structure 54
- 15I/026 0-20 cm bgs from SW corner of sq. 16 (E of 12, N of 15) in structure 54
- 15I/027 0-20 cm bgs from SW corner of sq. 10 (N of 9) in structure 54
- 15I/028 0-20 cm bgs from SW corner of sq. 16 (N of 15, W of 10) in structure 54
- 15I/029 0-20 cm bgs in sq. 14 (N of 13, W of 10) in structure 54
- 15I/030 20-40 cm bgs from SW corner of sq. 16 in structure 54
- 15I/031 0-20 cm bgs from SW corner of sq. 17 (W of 13, N of 6) in structure 54
- 15I/032 0-20 cm bgs in sq. 15 (S of 16, W of 11) in structure 54, from SW corner
- 15I/033 20-40 cm bgs from SW corner from sq. 15 in structure 54

APR-00-11-30

15I/038 40-60 cm bgs in sqs 16 + 15, fill between walls LUTRA and STDAT, possible MINK continuation, but very short almost a step before MINK

15I/039 60-80 cm bgs in sq. 16/15 of structure 59, same as above, walls STDAT and MINK seem to have stopped, but ERMINE and LUTRA run deeper than 60 cm have stopped work on LUTRA projection in 15I/036 for now (or ever?) moved to clean up in 15F, not too much more on structure methinks.

15F/062 20-40 cm bgs from sq. 17 - depth is now an educated guess since there is no undisturbed soil to gauge from here looking to sort mess out, find SKUNK, pat thinks 'niches' are possible here

15F/063 20-40 cm bgs in sq. 16, take down slowly, walls, floors, etc, look for all

15F/064 20-40 cm bgs in sq. 6 of 15B, cut E from 15I sq. 10 looking for base level, more of wall MINK

15I/040 20-40 cm bgs in sq. 17, take a look at wall corners
28/Mar/2000 - slow going today. Mostly clean-up type stuff, clarify some things. stuff in 15F still a mess.

15I/041 20-40 cm bgs in sq. 18, cut back slowly from S, look for walls, unable to look for MINK continuation, confirm of two walls running parallel to each other
(GIANT + other)

15I/042 20-40 cm bgs in sq. 14, cut down between walls LUTRA and GIANT, check for depth

15F/065 20-40 cm bgs from SE corner of sq. 16, clearing up 15F

15F/066 20-40 cm bgs in sq. 26, cut from sq. 16 to E, look for back of ~~REPORTED~~, trace MINK

15I/043, 20-40 cm bgs in sq. 10, cut back through floor to depth - check LUTRA projection

15F/067 20-40 cm bgs in sq. 25 simply cleaner

15F/068 20-40 cm bgs in sq. 5 of 15B, find out if ~~SKUNK~~ is anything at all, seems unlikely now, nothing around it, though maybe a stop

Time to start Final Notes! (I think)

6/Apr./2000

15I/44 Final surface clean of entire structure.

15J/001 0-20 cm bgs in sq. 1 of structure 55. Layed out main/axial trench today at an angle of 10° . I expect (hope?) that this is the same one connecting to structure 54.

15J/002 0-20 cm bgs in sq. 10 of structure work from both ends to Middle

7/Apr/2000

15J/003 20-40 cm bgs in sq. 1

15J/004, 20-40 cm bgs in sq. 10. Huge amounts of sheds in this level. Garbage dump associated with structure 57.

15J/005 40-⁵⁰~~80~~ cm bgs in sq. 1. At 50 cm bgs hit a stone floor, in good shape. Rather than backtracking for edges will press forward! (continued page 47)

15I/034 0-20 cm bgs from SW corner of sq. 20 (W of 16) in structure 54

15I/035 0-20 cm bgs from SW corner of sq. 18 (N of 17, W of 14) in structure 54

15I/036 20-40 cm bgs from SW corner of sq. 13 in structure 54

15I/037 0-20 cm bgs from SW corner of sq. 19 in structure 54 (N of 18, W of 15)

15I/038 40-60 cm bgs from SW corner of sqs 16+15 in structure 54

15I/039 60-80 cm bgs from SW corner of sqs 16/15 in structure 54

15F/062 20-40 cm bgs from SE corner of sq. 17 in structure 54

15F/063 20-40 cm bgs from SE corner of sq. 16 in structure 54

15I/040 20-40 cm bgs from SW corner of sq. 17 in structure 54

15F/064 20-40 cm bgs from NW corner of sq. 5 in 15P in structure 54

28/Mar/2000

15I/041 20-40 cm bgs from SW corner of sq. 18 in structure 54

15I/042 20-40 cm bgs from SW corner of sq. 14 in structure 54

15F/065 20-40 cm bgs from SE corner of sq. 16 in structure 54

15F/066 20-40 cm bgs from SE corner of sq. 26 in structure 54

15I/043 20-40 cm bgs from SW corner of sq. 10 in structure 54

15F/067 20-40 cm bgs from SE corner of sq. 25 in structure 54
24/Mar/2000

15F/068 20-40 cm bgs from SE corner of sq. 5 in 15B
in structure 54

6/Apr/2000

15I/044 Final surface clean of entire structure in structure
~~24~~ Structure 55!

15J/001 0-20 cm bgs ^{from SE corner} in sq. 1 of structure 55. (5 of 2)

15J/002 0-20 cm bgs from SE corner of sq. 10 in structure 55.
(N of 9)
7/Apr/2000

15J/003 20-40 cm bgs from SE corner of sq. 1 in structure 55.

15J/004 20-40 cm bgs from SE corner of sq. 10 in structure 55.

15J/005 40-⁵⁰cm bgs from SE corner of sq. 1 structure 55.

15J/006 0-20 cm bgs from SE corner of sq. 9 in structure 55
(S of sq. 10)

15J/007 0-20 cm bgs from SE corner of sq. 2 in structure 55
(N of sq. 2)

15J/008 40-50 cm bgs from SE corner of sq. 10 in structure 55.

15J/009 20-40 cm bgs from SE corner of sq. 2 in structure 55
10/Apr/2000

15J/010 0-20 cm bgs in sq. 8, from SE corner in structure 55
(S of 9)
continue

| | 30/Mar/2000 | FINAL | NOTES | | | | | |
|----------------|----------------------|-------------------|----------------------|---------------------|--------------------|--------|--------------------------|------------------|
| | Bottom ^{cm} | Top ^{cm} | Height ^{cm} | Length ^m | Width ^m | Layers | Orientation [°] | |
| ✓ Otter | 156 | 149 | 7 | 1.46 | 31 | 1 | 94-274 | level of |
| ✓ Weasel | 159 | 129 | 30 | 1.87 | 46 | 2 | 92-272 | Ground surface |
| ✓ Ferret | 103 | 168 | 65 | 5.97 | 30 | 3 | 96-276 | at SW projection |
| ✓ Skunk | 112 | 101 | 11 | see notes | 24 | 1 | 90°-270° | (sq. in 15 I) is |
| ✓ Mink | 79 * | 8 | 71 | 6.20 | 115 | 4 | 98-279 | 98 cm. |
| ✓ Martin | 75 | 45 | 30 | 0.95 | 22 | 2 | 14-194 | |
| ✓ Stoat | 62 | 28 | 34 | 2.19 | 46 | 2 | 10-190 | |
| ✓ Fisher | 48 | 11 | 37 | 1.02 | 42 | 7 | 6-186 | |
| ✓ Small-clawed | 75 | 28 | 47 | 2.72 | 38 | 4 | 14-194 | |
| ✓ Spotted | 129 * | 32 | 97 | 6.05 | 118 | 4 | 9-189° | |
| ✓ Ermine | 113 | 10 | 103 | 6.26 | 114 | 4 | 100-280 | |
| ✓ Giant | 128 | 106 | 22 | 2.07 | 53 | 1 | 59-179 | |
| ✓ Lutra | 126 | 12 | 114 | 4.75 * | 69 | 8 | 9-189° | |
| ✓ Nutria | 141 | 123 | 18 | 0.88 | 36 | 1 | 34-214° | |
| ✓ Canis | 127 | 118 | 9 | 0.86 | 21 | 1 | 33-213 | |
| ✓ Mustelae | 162 | 115 | 47 | 2.54 | 51 | 1 | 9-189° | |
| ✓ Polecat | 76 | 33 | 43 | 2.41 | 38 | 3 | 96-276° | |
| ✓ Coatzli | 120 | 83 | 37 | 1.24 | 24 | 2 | 1-181 | |

Otter Only 4 stones make up this wall, river cobbles sizes: (l x w x h) length x width x height, length is dx along orientation, width dx perpendicular to orientation of wall (front to back), height is depth of stones. 57x29x16, 50x31x12, ~~27x19x10~~ 19x27x10, 30x34x11. Wall is in good state of preservation, and probably served as a step and main entrance to structure. Center stone is very smooth, backing this idea up. ~~E~~ half has small cobbles behind (to N) of wall, but nothing behind W half of wall. cobbles reach all the way to WEASEL. Area here has very few shades, some lots with nothing, closest to center of structure, axial trench has the least. Many have been kept clean. Stones have flat side to front (S), though 2 smaller stones in W part are less regular.

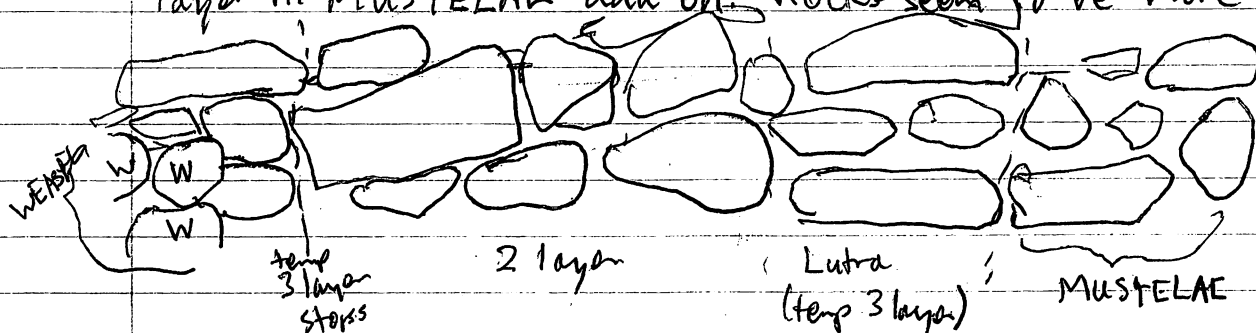
WEASEL S stones make up front of wall here, river cobbles and with flat sides most definitely facing out ward. Preservation is good, though there is some slide at W end of wall towards W. Some stones at this end are also tilted "back" to N. Wall is backed in W by another row of stones which along with larger stones in E connects wall to FERRET, making paved surface. 1 row of smaller stones beneath, flat sides out as well. Actually project from wall in E side, but 5-10cm back from top layer in W where there was more sliding. There are no smaller stones chinking, just dirt. WEASEL, like OTTER, is a step it seems, its edges to E and W virtually match OTTER's, though extending a bit further. Backs up idea that this is ^{main} entrance way. Rock sizes are $22 \times 55 \times 14$, $45 \times 50 \times 17$, $31, 42, 13$, $38 \times 34 \times 10$, $43 \times 38 \times 16^*$, second layer - $18 \times - \times 12$, $18 \times - \times 8$, $14 \times - \times 11$,

FERRET First large wall excavated, and first connecting other walls. Constructed of 3 layers of roughly equal-sized river cobbles. Flat sides are placed always facing outward. Top row of stones is ~~only~~ ^{only row} visible in center of wall because of WEASEL adjoining. Length of wall is inclusive of MUSTELAE as well as SPOTTED, although MUSTELAE is much lower than most of FERRET. Wall is best preserved in western portion, where layers are near perfect. Stones same size and stacked on top of each other. Because WEASEL has slid on W side, more of FERRET is exposed, leading me to feel that WEASEL and FERRET are not incorporated. FERRET came first, but it could only be by a day.

Now the strange part. As mentioned above, W and middle portions of FERRET are in a 3-layer same size construction, all roughly size of: $35 \times 29 \times 11$, $29 \times 33 \times 9$, $27 \times 28 \times 11$, $35 \times 27 \times 9$. Very uniform and regular. 11m E of Edge of WEASEL it changes though. There is a much larger stone ($36 \times 23 \times 19$) tilted to W, then construction changes to 2 layers of larger

12 * denotes that rock is partially buried and dimension is for unearthen part only

stones, also more irregular in shape, with not as flat sides. Again becomes 3 layer 40m before edge of LUTRA, but returns to two layer in MUSTELAE add-on. Rocks seem to be more tumbled here.



As in the drawing, the 3 layer continues again at wall LUTRA.

In West portion (near corner) of wall, it intersects with two seeming stairs. ~~CANADIENSIS~~ and LUTRA, it then corners into GIANT.

NUTRIA This very short wall may be some kind of step. It consists of only 3 stones, the SW most disappearing into the trench wall. Unlike most of structure, this wall is not on a N/S or E/W orientation, at an angle to the rest of SA and leader off to the SW. stones are $22 \times 37 \times 11$, $28 \times 34 \times 17$, $21 \times 36 \times 12$.

CANADIENSIS ^{$26 \times 25 \times 11$} ^{$37 \times 21 \times 11$} This wall is immediately behind NUTRIA, and is of the same type, and at the same angle. The single row of stones leaves only 2 exposed here, and as in NUTRIA, the flat side is on the outside, or SE face. stones are River cobbles of course with dimensions of $26 \times 25 \times 11$ and $37 \times 21 \times 11$.

SKUNK Quite frankly one of the nastiest walls in the structure, not clear at all. I had to remove 2 very large stones on wall that were badly slid and tilted. There is a chance that they might not even have been part of it at all. However their removal did reveal a line below. Compared with OTTER, WEASEL, and even FERRET the stones in SKUNK are smaller, and more tilted. This is all towards the center of the structure. To the East the line disintegrates into a cluster of stones which I assume connect

the wall with SPOTTED. Behind both the center wall and the East there are stones that extend to MINK. I assume that this is a floor, mixed with some tumble, but it is difficult to say which is which.

To the West the situation becomes even more confused. The line of wall stones stops, or changes character. There is a line of stones, however they are 15 cm forward (S) of the rest of the wall. The spacing between these stones is also wide, about 2 cm. The current idea is that this is SKUNK still, and that it runs to connect with LUTRA.

The gap between what we feel is the floor and LUTRA is due to excavators to find depth of LUTRA on E face and S of MINK. Measurements of wall from E face of SPOTTED to W face of probable LUTRA: 4.98 m, from Edge center to W edge: 1.50 m, from W edge center to W edge probable LUTRA: 1.47 m. There is a projection on E edge, consisting of a large stone ($36 \times 37 \times 13$) and projection 23 cm in front of center wall. 2 stones E of this large one before SPOTTED line up with this. Length of Projection: 0.92 m. There is a small gap between middle and projection of 24 cm. There doesn't seem to be any kind of line behind this though.

Middle stones: ($28 \times 23 \times 13$, $25 \times 24 \times 7$, $19 \times 32 \times 17$, $19 \times 20 \times 6$)
West stones: ($26 \times 16 \times 13$, $21 \times 21 \times 5$, $23 \times 17 \times 11$)

MINK One of the largest walls in structure 54, and a bit puzzling. We've pulled massive amounts of tumble from this structure, and I figure most of it comes from MINK, SPOTTED, ERMINE, and LUTRA. Of those 4 I would say ~~LUTRA~~^{MINK} accounts for the lion's share of tumble. This is based on the amount of tumble on the structure's S face plus the fact that the remaining stones are so badly slid-nearly verticle. Further the layers of stone on the outside or South face is only 2 or 3

layers deep. Beneath is dirt and fill. The wall itself is a summit wall, and over a meter thick at widest. Wider than would seem necessary to support a bahareki wall. This leads me to suspect that there was a bench, on either the outside or inside half of the wall. The thickness of the wall would thus make a bit more sense.

I treat the wall as starting at E face of SPOTTED and running all the way through and past the W end of the excavation. It does however change character a few times. The main portion of the wall, between SPOTTED and LUTRA, is as described above. I took a cut back along the E face of LUTRA projection, assuming that we would find stones from MINK going all the way down to the level of LUTRA's base. No such luck. The wall stops at an elevation of 70 cm from the datum.

Below this level seems to be tumble, or fill more likely, in the form of clay and small stones. This may be an indication that this portion of MINK is of later construction than originally thought.

Interestingly, and puzzlingly, enough, MINK goes down much further on the inside or North face. Between MARTIN and ~~LUTRA~~ ^{FISHER} it goes down to at least 71 cm. Between FISHER and LUTRA, at least 82 cm.

Between LUTRA and STOUT (in the next structure) MINK changes character somewhat. It is now in 2 levels on the N (inside) face. The lower level's base is at 125 cm from the datum, its summit at 82 cm. Its edge is 124 cm from the S face of Mink.

The upper level is much shorter and narrower. Its base is the summit of the lower level (82 cm), its summit is at 61 cm. Its width from S face of MINK is 88 cm.

This portion of MINK has different construction as well. Where the main portion of MINK is constructed out of similar sized blocks one on top of the other, here there is chinking

between the larger stones.

| <u>MINK</u> rock sizes | N face STOAT-LUTRA | N face LUTRA-FISHER | N face FISHER-SPOTTED | S face LUTRA-STOAT | S face LUTRA-SPOTTED |
|---------------------------|-----------------------|------------------------|--------------------------|-----------------------|-------------------------|
| | 20x26x10 | 20x23x10 | 21x12x9 | 23x28x9 | 19x20x12 |
| | 25x—x10 | 22x22x11 | 23x19x14 | 26x28x10 | 21x22x18 |
| | 18x—x8 | 30x—x10 | 22x17x10 | 15x29x12 | 28x28x18 |
| | 31x23x11 | 19x—x13 | 40x23x15 | 39x17x11 | 23x23x18 |
| | | 20x—x11 | 48x—x13 | 18x31x9 | 26x13x11 |

iv. Mink between LUTRA and FISHER is composed of large flat faced stones with no chinking in 4 rows, the stones get larger the lower down you go.

N. face Mink between FISHER and SPOTTED includes wall MARTIN built between MINK and ERMINE. FISHER is built between as well. The wall here is composed of usually 3 layers of stones. There are a few considerably large stones mixed in, and here it goes to 2 layers. There doesn't seem to be any chinking here.

S. Face MINK W of LUTRA. Here the wall becomes in even worse shape than E of LUTRA. The stones seem to be slid and tumbles fairly badly. Also flat sides are not particularly on the outside (S) face. Only 1 layer is visible, on top of fill. Wall seems to run on top of STOAT₂, and STOAT runs on top of lower level of N face, but not upper level, which matches level on S face. The wall is also 35 cm lower between LUTRA + STOAT (matches ERMINE)

MARTIN

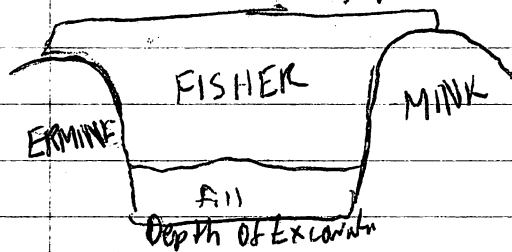
Finally an easy one to write up! Martin is a short wall between MINK and ERMINE. It is not incorporated, but rather tacked-on in between. Its "face" is to the West, the same as FISHER. The face has the flat sides of the river cobbles and limestone facing outward.

Perhaps the oddest thing about MARTIN is the space

that it serves to enclose. It is 1.67 m from the W face of SPOTTED to the W face of MARTIN and 1.03 m from MINK to ERMINE. This gives floor space at about 1.72 m total! Too small one would think for a living space.

The area to the W of MARTIN is even smaller. This space is bordered by MARTIN, ERMINE, FISHER, and MINK. There is only 47 cm of space between the two walls and 90 cm between MINK and ERMINE, giving this room a floor space of .42 m!

FISHER This rather thin wall seems to serve the same purpose as MARTIN, namely to divide the space at the summit. Like MARTIN it is added on at a later date between MINK and ERMINE, rather than incorporated. The front of FISHER



Looking East
from LUTRA

seems to face West, with the faces on this side being mostly flat. The back or East facing side is very irregular. The stones making

up the wall vary in size considerably, the top row being $(19 \times 23 \times 10)$ $(18 \times 24 \times 12)$ $(13 \times 21 \times 10)$. The second row: $(15 \times _ \times 7)$ $(22 \times 13 \times 8)$ $(15 \times _ \times 9)$, Third row down: $(26 \times 14 \times 9)$ $(16 \times _ \times 8)$ $(25 \times _ \times 16)$. The fourth row is highly irregular, more so than the rest of the wall. Though the entire feature is badly slid and tumbled. Stones in 4th row down: $(19 \times _ \times 22)$ $(22 \times _ \times 17)$ $(21 \times _ \times 9)$.

The space FISHER encloses along with LUTRA, MINK, and ERMINE measures only 60 cm E-W and 66 cm N-S giving it a floor space of only .40 square meters!

STOAT This wall is part of next structure, so I'm not going to look at it too closely. It is a short wall built on top of, and incorporated with ERMINE and MINK. There seems to be at least two layers of the wall going back (to west). The sides of the front (E) face are flat, and like

the rest of structure 54, river cobbles. Thought to be first wall of next structure in part because faces E, MARTIN, FISHER, and LUTRA all face West. Wall seems to be built on top of fill, both MINK, LUTRA go down much further, even ERMINE does. Space enclosed by 4 walls is 0.58 sq. meters in area.

(16x25x12) (29x23x14) (33x- x12) (22x- x8) (27x20x15)

STOAT₁

I originally thought this projection from MINK to be a continuation of STOAT. It doesn't seem to align very well however, though the possibility still exists. I feel it more likely that this is instead the back of GIANT, and I don't know why it is higher though. It seems, like giant, to front on the West.

SMALL-CLAWED

This guy is definitely in the next structure. It joins with POLECAT and possibly ERMINE. I have not excavated hardly any of it yet, that will come later. It seems to be of much better and more solid construction than POLECAT, leading me to suspect it is older. Rock sizes:

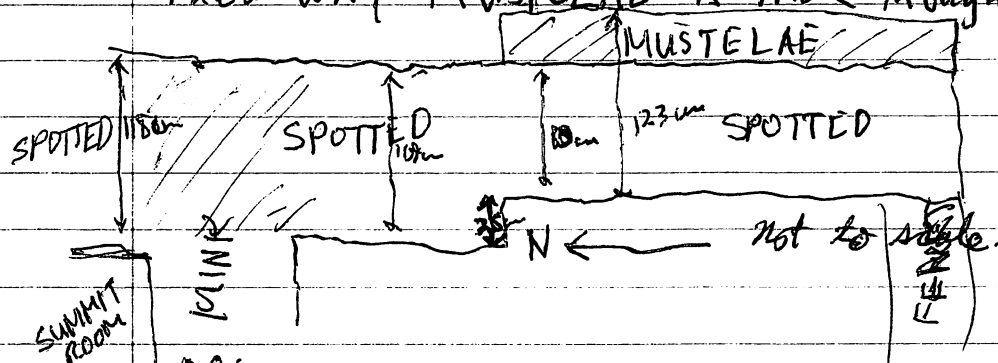
(22x25x12) (21x25x11) (19x- x16) (37x38x9) (20x28x9)

SPOTTED

The East facing of the four large summit walls. This wall is in worse shape than ERMINE, for example, especially in the Northern half. Much of this damage is due to rats' nests in the wall. They removed the dirt between stones, and the stability suffered as a result, so while most of the wall is fairly level, some segments have slid nearly 45°. Just as MINK and ERMINE are very wide, so is SPOTTED, probably a bench as well.

The stones are fairly uniform in size and shape - flat side out. The wall is at its widest at the summit (including ERMINE and MINK). It narrows slightly after it passes South of MINK to 109 cm.

At about 74 m S of MINK, SPOTTED narrows further to about 80 cm wide for the rest of its length (AM the way to FERRET). This is partially offset by the presence of MUSTELAE at exactly the same point SPOTTED narrows. I doubt this is coincidence. However, I have no idea why MUSTELAE is there though.



The wall is perhaps best preserved in the Northern portion near the summit. Or at least is the most uniform in construction there.

After narrowing the wall contains fairly irregularly shaped stones, many tilted in all directions.

Stones at summit on inside (W) face: $(14 \times 22 \times 8)$ $(14 \times 25 \times 17)$ $(16 \times \text{---} \times 10)$ $(26 \times 18 \times 11)$ $(13 \times \text{---} \times 10)$

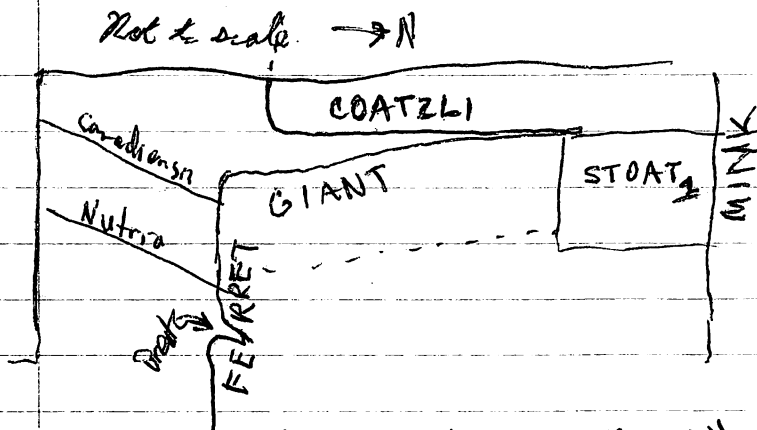
Stones at summit outside (E) face $(28 \times 25 \times 6)$ $(15 \times \text{---} \times 13)$ $(28 \times \text{---} \times 12)$ $(40 \times \text{---} \times 11)$ $(11 \times \text{---} \times 13)$ $(29 \times \text{---} \times 14)$

Stones S of summit E face: $(23 \times 25 \times 12)$ $(28 \times 30 \times 25)$ $(28 \times 38 \times 15)$ $(21 \times 38 \times 15)$ $(26 \times \text{---} \times 13)$

Stones S of summit, W face: $(37 \times 17 \times 8)$ $(22 \times 23 \times 13)$ $(22 \times 20 \times 10)$ $(26 \times 16 \times 12)$ $(24 \times \text{---} \times 13)$

GIANT

This wall corners with FERRET and represents the likely W edge of the platform defined by FERRET, SPOTTED, and GIANT. One would assume that it is the same style of construction that went into FERRET. However, I've been unable to excavate to base of GIANT because it comes to run parallel with wall COATZLI in the next structure. The ~~very~~ fact that these two walls are close enough to be touching is puzzling. I'm not sure if they were built this way or if one or both slid into the other. As of right now I am more inclined to accept the latter.



This is because GIANT seems to "swing" out to join with COATZLI. If put in at the same time why bother with such flat stones either for both walls?

There is also a strange "break" in FERRET where the stones have pulled apart. This could also indicate a slide in GIANT. The only problem with this is that STOAT1 would have had to slide too, which it could have done, but it is pretty substantial. The other slide possibility is that the S end of GIANT could have slid E, away from COATZLI. And of course they could have been built like this.
Rock sizes: (22x27x10) (24x25x8) (28x32x9)

COATZLI This wall is part of the next structure, and at least for now is mostly submerged. This is for the same reasons GIANT is, since the walls are touching it is impossible to depth check one without destroying the other. COATZLI seems to be a corner, with a wall running W into the side of the excavation. The southernmost blocks appear to be flat on both the East and S faces.

Rock sizes: (31x18x8) (13x22x7) (21x22x12)

MUSTELAE I really have no idea why this wall is here. As shown on page 42 it is tacked onto SPOTTED, matching the point where SPOTTED narrows. I'm not really sure what purpose this wall may have served though. It is quite a bit lower than SPOTTED, about 30 cm. It seems to be added on to SPOTTED, rather than incorporated.
Rock sizes: (28x21x17) (15x33x15) (21x24x13) (30x27x15) (31x25x7)

ERMINE This is the single largest wall in the structure, and could be still larger than the measured length by at least another 2.41 m (the length of POLECAT). This doubt as to how long ERMINE is arises because POLECAT lies in front of (N) it. Hopefully with the excavation of the next structure the true length will be revealed, until then the measured length is distance from SPOTTED (and including) to POLECAT.

In contrast to the S face of Structure 54, which is composed of many walls and terraces, the North face is composed solely of ERMINE. It is both summit and final wall. Like the other summit walls (save LUTRA) it is over 1 m thick, possibly meaning that like the other walls it was half foundation / half bench.

The main (summit) portion of the wall is composed of large river cobbles. Because they are so rounded, the flat side is not always very flat, but it is still facing outward (to N). As one moves down the stones tend to get a bit smaller, and in places there seem to be chinking stones. In this portion of the wall preservation seems remarkably good. There is very little (if any) tilt except near SPOTTED. This seems to be related to the rat problem SPOTTED has.

Rocks on outside (N) face in summit portion: $(27 \times 12 \times 11)$
 $(27 \times 16 \times 17)$ $(24 \times 26 \times 15)$ $(20 \times \text{---} \times 14)$ $(23 \times \text{---} \times 16)$ $(15 \times 11 \times 7)$

Rocks on inside (S) face in summit: $(18 \times 37 \times 4)$ $(20 \times 21 \times 7)$
 $(31 \times \text{---} \times 9)$ $(16 \times 29 \times 13)$ $(23 \times 21 \times 12)$ $(38 \times 31 \times 13)$ $(26 \times \text{---} \times 15)$

ERMINE first changes character on the inside (S) face between FISHER and LUTRA here it widens from the 90 cm width found from SPOTTED to FISHER to a width of 114 cm.

Right now I don't really know why it does this.

West of LUTRA (original edge of structure) ERMINE both narrows and drops. Narrows to 60 cm across and drops by 15 cm. Here it seems to be a sort of bridge between LUTRA and STOAT. On the outside (N) face the stones decrease in size, and are elongated rather than rounded.

there are also many smaller stones present. Not as "nice" a wall in other words. This continues at least until 1.66 m past the W face of LUTRA. From there on POLEGAT make knowledge of ERMINE uncertain.

POLEGAT

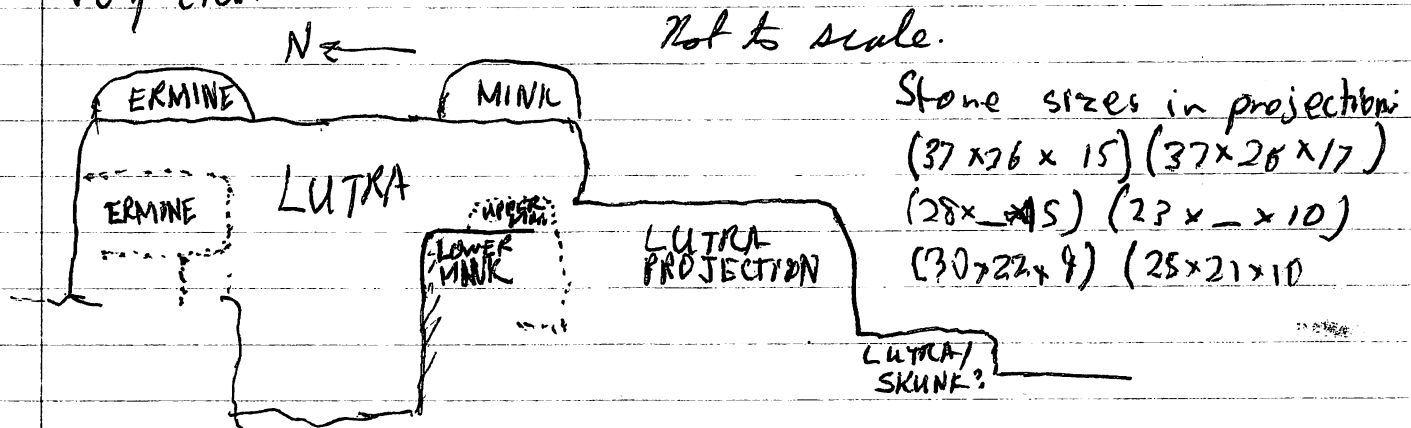
With the possible exception of SKUNK, this is the ugliest wall in structure 54 (which technically it's not even in...) Pat seems to be of the opinion that this is a post-classic extension connecting ERMINE and SMALL-CLAWED. It is certainly of very different construction from the above mentioned walls. By comparison it is quite haphazard. Some stones are oriented flat sides outward, some are not, almost all are tilted at least a little bit. The two rows are sometimes almost completely out of place, but still distinguishable. The best preserved area seems to be immediately adjacent to SMALL-CLAWED. (26x17x12) (36x—x17) (28x—x11) (13x20x14)

LUTRA

Last one! LUTRA is the West facing of the 4 summit walls. And it is (of course!) a bit puzzling. The part of ERMINE that runs West of LUTRA appears to be tacked on, LUTRA runs all the way through. This along with the style of building leads me to suspect that LUTRA was the original West face of structure 54. However the lower level of MINK seems to be built under LUTRA, though both walls go to the same level of depth. The higher level of MINK between LUTRA and STAT seems to be tacked on just as ERMINE is. This now indicates that the lower portion of MINK may even be from an earlier structure.

Another puzzle about LUTRA is the thickness of the wall between ERMINE and MINK. ~~As can be~~ The wall here is only about 40 cm thick, less than half that of the 3 other summit walls. Stones here measure: (3x32x12) (29x28x14) (20x—x14) (21x—x18) (31x—x9) (23x30x15) (22x—x13)

LUTRA then passes above lower MINK and through Upper MINK to continue on, possibly as far as SKUNK. I say possibly because of SKUNKS poor preservation. LUTRA drops to the level of about 40 below the datum after passing MINK. It forms a projection 6.9m wide here and extending at this height for m. The stone here are large, and flat sided on all faces of the projection. After m the height drops some m to be on same level (roughly) as this part of SKUNK. Here as with the rest of SKUNK, things are not very clear.



Because MINK is so clear so far down on the N face, and it seems to be older than the rest, I'm now wondering if there may be a hidden S face to MINK buried behind the higher one. Will test.

Have confirmed wall ^(HMS) DREADNAUGHT in sq. 10, a later construction, probably same time as structure 57. As you can tell, this time I've decided to go with British warships. Apparently E.R. won't mind my omitting HMS. from my notes.

15J/006 0-20 bgs in sq. 9. Two walls found here. The Northernmost (and lower) REPULSE, the upper Southern wall is HOOD. REPULSE seems to have slid outwards some, but at least now both walls are in pretty good shape. Will take sq. 10 down 10 cm more to depth check REPULSE. There seems to be a platform of stones between walls.

15J/007 0-20 cm bgs in sq. 2. Nothin' here.

15J/008 40-50 cm bgs in sq. 10. Depth check on REPULSE. Only about 30 cm deep, built on fill.

15J/009 20-40 cm bgs in sq. 2

10/Apr/2000

15J/010 0-20 cm bgs in sq. 8, dirt only, found back of a N/S wall

15J/011 40-50 cm bgs in sq. 2, dirt only, clean to floor. For some reason floor stops, no defined end either, I'm hoping they didn't accidentally take it out.

15J/012 20-40 cm bgs in sq. 8, depth check on HMS HOOD

15J/013 0-20 cm bgs in sq. 3, walls here, but odd. My current theory is that there are 2 walls, one built right in front of other, we shall see.

15J/014 40-60 cm bgs in sq. 8, depth check, but both walls keep going. Will have to dig sq. 7 before going deeper.

155/015 0-20 cm bgs in sq. 7, very muddled and confusing. What is the other summit (S) wall? I don't think here

155/016 0-20 cm bgs in sq. 4. Following N at level of wall Th. sq. 3. (AMS WARSPITE). ~~th~~ HMS NORFOLK in front (S) of WARSPITE

155/017 20-40 cm bgs in sq. 7. Dig to explore wall in E face - HMS KING GEORGE V (KGV) and to allow space for deeper dig in sq. 8 to depth check HOOD.

155/018 60-80 cm bgs in sq. 8. Depth check on HOOD. Bad/Good luck. Found body here, unfortunately bashed hell out of it with pickaxe! Will have Mario or other worker clean what's left mañana.

155/019 0-20 cm bgs in sq. 6. Have A+R work on this while I clean body. Wall here, HMS RODNEY, will have to excavate tomorrow. Possible line right at N edge of 6. Doubtful though, will remove.

11/Apr/2000

155/020 0-20 cm bgs in sq. 5. Continue in at level of WARSPITE. Back of HMS RODNEY uncovered.

155/021 0-20 cm bgs in sq. 15, uncovered top of DREADNAUGHT as expected, green obsidian

155/022 20-40 cm bgs in sq. 15, continued to uncover DREADNAUGHT and REPULSE, however there is a possible floor here, did not take out.

155/023 0-20 cm bgs from sq. 14, HOOD ends, and probably corners into ~~th~~ KGV.

15K/001 0-20 cm bgs in sq. 1, while WARSPITE seems to be in trouble, NORFOLK is doing fine, in fact it will be needed to open up square to S of 1, (4) to get a good look at it.

12/Apr/2000

15J/024 0-20 cm bgs in sq. 13, not much revealed yet. Will continue, however need to finish axial trench in sq. 6.
— Green Obsidian

15K/002 0-20 cm in sq. 4, nothing here, take down 20 more, and clear S face of Norfolk

15K/025 20-40 cm bgs in sq. 6, finish axial trench, clear N face of RODNEY. It is possible that I removed part of K6V connection with RODNEY, there is also a floor, or base of wall here in front of RODNEY.

15K/003 20-40 cm bgs in sq. 4. Nothing much here.

15K/004 0-20 cm bgs in sq. 2 Nothing here, halt at 10 bgs, Ed says.

15J/026 0-20 cm bgs in sq. 16 REPULSE continues as predicted. I'm fairly certain that the cut blocks in the wall were "borrowed" from somewhere, because the wall is so non-uniform.

15K/005 40-60 cm bgs in sq. 4, floor seems to continue, though less distinct.

15J/027 0-20 cm bgs in sq. 18 A mess! Will move to sq. 17, hopefully it'll help me make sense of stuff.

15M/001 0-20 cm bgs in sq. 1, following DREADNAUGHT, seems to die off.

12/Apr/2000

15J/024 0-20 cm bgs from NE corner of sq. 13 in structure 55.
(S of 14, E of 8)

15K/002 0-20 cm bgs from SE corner of sq. 4 in structure 55.
(S of 1, E of 2 in 15J)

15J/025 20-40 cm bgs in sq. 6 from SE corner in structure 55.

15K/003 20-40 cm bgs from SE corner of sq. 4 in structure 55.

15K/004 0-20 cm bgs from SE corner of sq. 2 in structure 55.
(N of 1, E of 4 in 15J)

15J/026 0-20 cm bgs from NE corner of sq. 16 in structure 55.
(E of 15)

15K/005 0-20 cm bgs in sq. 4 from SE corner in structure 55.

15J/027 0-20 cm bgs from NE corner of sq. 18 in structure 55.
(E of 17)

15M/001 0-20 cm bgs from NW corner of sq. 1 in structure 55.
(W of 10 in 15J)

15K/006 20-40 cm bgs from SE corner of sq. 1 in structure 55.

15J/028 0-20 cm bgs from NE corner of sq. 17 in structure 55.
(E of 16, W of 18)

13/Apr/2000

15L/001 0-20 cm bgs from SW corner of sq. 2 in structure 55.
(W of 3 in 15J)

15K/007 0-20 cm bgs from SE corner of sq. 3 in structure 55.
(E of 5 in 15J, N of 2)

15K/006 20-40 m bgs in sq. 1, cleared off what may be more of NORFOLK, and WARSPITE, though they seem to be having problems.

15J/028 0-20 m bgs in sq. 17, dug here to follow REPULSE and make some sense of corner in sq. 18 - good luck

13/Apr/2000

15L/001 0-20 m bgs in sq. 2, come down on WARSPITE/NORFOLK, what a mess! Unable to make much sense of things like this, will move to sq. 1

15K/007 0-20 m bgs in sq. 3 simply clean top and other side of LORD NELSON.

15M/002 20-40 m bgs in sq. 1, wall DREADNAUGHT STOPS. ~~However~~, there seems to be some kind of stone platform. At same level.

15M/003 0-20 m bgs in sq. 2 More of floor found, connects w/ REPULSE, which continues, as does HOOD. There seems to be another wall in W face, which I'll investigate. Found Plumbate

15L/002 0-20 m bgs in sq. 1 Nothing, NORFOLK is mess, it's here at all...

15J/029. 20-40 bgs in sq. 18. Was able to follow REPULSE from sq. 17 into 18 and find corner of SMALL-CLAWED and REPULSE, of which upper level has slid forward much.

15K/008 0-20 m bgs in sq. 5 Came down on top of NORFOLK, need to go deeper to resume.

15M/004 0-20 bgs in sq. 6 seems to be a floor here, also

This runs from REPULSE to HOOD.

15L/003 20-40 cm bgs in sq. 1 Nothin' here, can't seem to find ~~NORFOLK~~

15K/009 20-40 cm bgs in sq. 5, NORFOLK/WARSPITE seems to corner here, there is a floor at 40 cm bgs as well.

15M/005 0-20 cm bgs in sq. 3 Back of HOOD here, only go down 20 for now.

15L/004 20-40 cm bgs in sq. 2 Cut back bit by bit to North to look for WARSPITE and NORFOLK. NORFOLK found, but no WARSPITE. NORFOLK drops a level, about 40 cm bgs. Large pieces of cyl. indur. pot found 45 cm bgs, 33 cm from N edge, and 45 cm from W edge. Bagged separately.

14/Apr/2000

15K/010 0-20 cm bgs in sq. 6, much clearer now, but seems wall does indeed corner and goes N through 6.

15M/006 0-20 cm bgs in sq. 7, Much same as 3, lotsa shards, HOOD continues

15K/011 20-40 cm bgs in sq. 6 Indeed a wall! Possibly a lower level in front, I removed through because nothing beneath. Name of wall: HMS VICTORY.

15J/030 0-20 cm bgs in sq. 19 REPULSE continues, and as a surprise so seems to HOOD! If so, this means I ripped through it in sq. 14. Bad!

15M/007 Whole lotta nothin' here. 0-20 bgs in sq. 8

15J/031 20-40 cm bgs in sq. 19. See how deep REPULSE and Hood run here.

13/Apr/2000

15M/002 20-40 cm bgs from NW corner of sq. 1 in structure 55.

15M/003 0-20 cm bgs from NW corner of sq. 2 in structure 55.
(S of 1, W of 4 in 15J)15L/002 0-20 cm bgs from SW corner of sq. 1 in structure 55.
(S of 3, W of sq. 2 in 15J)

15J/029 20-40 cm bgs from NE corner of sq. 18 in structure 55.

15K/008 0-20 cm bgs from SE corner of sq. 5 in structure 55.
(E of 4)15M/004 0-20 cm bgs from NW corner of sq. 6 in structure 55.
(W of 2)

15L/003 20-40 cm bgs from SW corner of sq. 1 in structure 55.

15K/009 20-40 cm bgs from SE corner of sq. 5 in structure 55.

15M/005 0-20 cm bgs from NW corner of sq. 3 in structure 55.
(S of 2, W of 8 in 15J)

15L/004 20-40 cm bgs from SW corner of sq. 2 in structure 55.

14/Apr/2000

15K/010 0-20 cm bgs from SE corner of sq. 6 in structure 55.
(N of 5, E of 2)15M/006 0-20 cm bgs from NW corner of sq. 7 in structure 55.
(S of 6, W of 3)

15K/011 20-40 cm bgs from SE corner of sq. 6 in structure 55.

15J/030 0-20 cm bgs from NE corner of sq. 19 in structure 55.
(S of 16, E of 14)15M/007 0-20 cm bgs from NW corner of sq. 8 in structure 55.
(N of 6, W of 1)

15J/031 20-40 cm bgs from NE corner of sq. 19 in structure 55.

15L/005 40-60 cm bgs from SW corner of sq. 1 in structure 55.

15L/005 40-60 cm bgs in sq. 1 Dug further to expose base and front of wall HMS NORFOLK

15K/012 0-20 cm bgs in sq. 7 following HMS VICTORY N, find E/W wall HMS ~~BEAGLE~~ ARK ROYAL

15M/008 20-40 cm bgs in sq. 8 front of wall REPULSE as expected. W'll have to move back dirt to continue exploring W.

25/Apr/2000

15K/013 20-40 cm bgs in sq. 7 exposed S face of ~~BEAGLE~~ as well as HMS ARK ROYAL running parallel, but deeper.

15J/032 0-20 cm bgs in sq. 21, continue to expose back of REPULSE and new wall HMS BELFAST, Ed says only 20 cm needed here.

15J/033 0-20 cm bgs in sq. 22, partially in structure S4 excavation here, looking for end of BELFAST. Found end well before SMALL-CLAWED (Str. S4) nice corner, but dig in sq. 21 to clarify.

15K/014 0-20 cm bgs in sq. 8 continuing E along ~~BEAGLE~~/ARK ROYAL line. The guys got a bit out of hand and it ended up being more like 0-40 cm bgs.

15J/034 20-40 cm bgs in sq. 13 Tops of some weird small wall(s) running E/W, will go deeper to see more of.

15J/035 20-40 bgs in sq. 21 dug deeper here to look for corner of BELFAST, which incidentally we now guess to be same as Hood.

15K/015 0-20 cm bgs in sq. 9 looking along ARK ROYAL seems though it corners in sq. 8 to North. Here hit very dense fill, may be wall in here, for now follow corner to N into 15J

26/Apr/2000

15J/026 0-20 cm bgs in sq. 23 following new wall re-born HMS ~~PEASKEET~~^{COLORIOUS} to North. However Ed only wants a clean of for now. Move to sq. 10 in 15K.

15J/037 0-20 cm bgs in sq. 12 Possible wall top here, will take down to 40 cm, same level as little walls in sq. 13

15K/016 0-20 cm bgs in sq. 10, a mess! Very few sherds, can't make sense, so moving S into sq. 11.

15J/038 20-40 cm bgs in sq. 12 Wall running E/W, HMAS AJAX, this parallels wall found in sq. 13 HMS EXETER, though AJAX is much newer.

15K/017 0-20 cm bgs in sq. 11 Nothing!

15J/039 0-20 cm bgs in sq. 11 Where is RODNEY? Very odd, no corner here. Will take down 20 more to look for anything.

15K/018 Nothin' here. ^{some sherds.} Just going down for cut into sq. 10.

27/Apr/2000

15M/009 0-20 cm bgs in sq. 9 following back of HOOD, hit much here, so will move to sq. 11 to follow front of REPULSE.

15K/019 20-40 cm bgs in sq. 10. Cutting N from sq. 11. Finally found WARSPITE at 40 cm bgs in fore N side.

14/Apr/2000

15K/012 0-20 cm bgs from sq. 7, SE corner in structure 55
(N of 6, E of 3)

15M/008 20-40 cm bgs from NW corner of sq. 8 in structure 55

25/Apr/2000

15K/013 20-40 cm bgs from SE corner of sq. 7 in structure 55

15J/032 0-20 cm bgs from NE corner of sq. 21 in structure 55
(S of 18, E of 20)

15J/033 0-20 cm bgs from NE corner of sq. 22 in structure 55
(E of 21)

15K/014 0-20 cm bgs from SE corner of sq. 8 in structure 55
(E of 7)

15J/034 20-40 cm bgs from NE corner of sq. 13 in structure 55

15J/035 20-40 cm bgs from NE corner of sq. 21 in structure 55

15K/015 0-20 cm bgs from SE corner of sq. 8 in structure 55,
26/Apr/2000 (E of 8)

15J/036 0-20 cm bgs in sq. 23 from NE corner in structure 55.
(N of 8 in 15K)

15J/037 0-20 cm bgs in sq. 12 from NE corner in structure 55.
(S of 13, E of 7)

15K/016 0-20 cm bgs from SE corner of sq. 10 in structure 55.
(E of 5)

15J/038 20-40 cm bgs from NE corner of sq. 12 in structure 55.

15K/017 0-20 cm bgs from SE corner of sq. 11 in structure 55
(S of 10)

15J/039 0-20 cm bgs from NE corner of sq. 11 in structure 55.
(S of 12, E of 6)

(cont. from 33)

15J/011 40-50 cm bgs from SE corner of sq. 2 in structure 55.

15J/012 20-40 cm bgs from SE corner of sq. 8 in structure 55.

15J/013 0-20 cm bgs from SE corner of sq. 3 in structure 55.
(N of 2)

15J/014 40-60 cm bgs from SE corner of sq. 8 in structure 55.

15J/015 0-20 cm bgs from SE corner of sq. 7 in structure 55.
(S of 8)15J/016 0-20 cm bgs from SE corner of sq. 4 in structure 55.
(N of 3)

15J/017 20-40 cm bgs from SE corner of sq. 7 in structure 55.

15J/018 40-80 cm bgs from SE corner of sq. 8 in structure 55.

15J/019 0-20 cm bgs from SE corner of sq. 6 in structure 55.

11/Apr/2004 (S of 7)

15J/020 0-20 cm bgs from SE corner of sq. 5 in structure 55.
(S of 6, N of 4)15J/021 0-20 cm bgs from NE corner of sq. ~~10~~¹⁵ in structure 55.
(E of sq. 10) (N of 14)

15J/022 20-40 cm bgs from NE corner of sq. 15 in structure 55.

15J/023 0-20 cm bgs from NE corner of sq. ~~14~~ in structure 55.
(S of 15, E of 9)15K/004 0-20 cm bgs from SE corner of sq. 1 in structure 55.
(E of 3 in 15J)

(cont. from page 33)

10/Apr/2000

15J/011 40-50 cm bgs from SE corner of sq. 2 in structure 55.

15J/012 20-40 cm bgs from SE corner of sq. 8 in structure 55.

15J/013 0-20 cm bgs from SE corner of sq. 3 in structure 55.
(N of sq. 2)

15J/014 40-60 cm bgs from SE corner of sq. 8 in structure 55.

15J/015 0-20 cm bgs from SE corner of sq. 7 in structure 55.
(S of sq. 8)15J/016 0-20 cm bgs from SE corner of sq. 4 in structure 55.
(N of sq. 3)

15J/017 20-40 cm bgs from SE corner of sq. 7 in structure 55.

15J/018 60-80 cm bgs from SE corner of sq. 8 in structure 55.

15J/019 0-20 cm bgs from SE corner of sq. 6 in structure 55.
(S of sq. 7)

11/Apr/2000

15J/020 0-20 cm bgs from SE corner of sq. 5 in structure 55.
(S of sq. 6, N of sq. 4)15J/021 0-20 cm bgs from NE corner of sq. 15 in structure 55.
(E of sq. 10)

15J/022 20-40 cm bgs from NE corner of sq. 15 in structure 55.

15J/023 0-20 cm bgs from NE corner of sq. 14 in structure 55.
(S of 15, E of 9)15K/001 0-20 cm bgs from SE corner of sq. 1 in structure 55.
(E of (3 in 15J))

AP-00-11-58

15J/040 20-40 bgs in sq. 11. No sign of HMS RODNEY!
Very odd - ~~will go down another 20~~. Heavener HMS DEVONSHIRE
found here, thin and late thush, faces South.

15M/010 0-20 cm bgs in sq. 11 REPULSE ends chest
immediately, nothing else here.

15J/041 0-20 cm bgs in sq. 29. Very odd. Found back of
HMS BELFAST with a S facing wall tacked onto it!
This is HMS PRINCE OF WALES

15M/011 0-20 cm bgs in sq. 18, to the heart of the matter so
to speak. REPULSE and ~~HOB~~ both seem to end. Will take
down 20 more in 4 to see if corners.

15K/020 40-60 cm bgs in sq. 10 ~~For~~ Checking depth on
WARSPITE as well as authenticity. Seem real, if a bit
shallow, will follow.

15J/042 0-20 cm bgs in sq. 28 3 walls here! 1 seems to
be a continuation of DEVONSHIRE, then there is one in
N face of ^{HMS SUFFOLK} excavation, and a N/S wall at same level (20cm) ^{HMS INDEFATIGABLE}
as DEVONSHIRE, will go N ~~to~~ look at other walls.

15M/012 20-40 cm bgs in sq. 9, verifying that wall is here,
it is, will depth check on it. HMS QUEEN ELIZABETH

15K/021 0-20 cm bgs in sq. 12 Following WARSPITE, nothing
on this level.

15M/013 40-60 cm bgs in sq. 9, depth check on QUEEN
ELIZABETH

15K/018 20-40 cm bgs from SE corner of sq. 11 in structure 55.
27/Apr/2000

15M/009 0-20 cm bgs from NW corner of sq. 9 in structure 55.
(W of 7)

15K/019 20-40 cm bgs from SE corner of sq. 10 in structure 55.

15J/040 20-40 cm bgs from NE corner of sq. 11 in structure 55.

15M/010 0-20 cm bgs from NW corner of sq. 11 in structure 55.
(W of 8)

15J/041 0-20 cm bgs from NE corner of sq. 24 in structure 55.

15M/011 0-20 cm bgs from NW corner of sq. 10 in structure 55.
(S of 11, W of 6)

15K/020 40-60 cm bgs from SE corner of sq. 10 in structure 55.

15J/042 0-20 cm bgs from NE corner of sq. 20 in structure 55.
(E of 11, W of 23)

15M/012 20-40 cm bgs from NW corner of sq. 9 in structure 55.

15K/021 0-20 cm bgs from SE corner of sq. 12 in structure 55.
(E of 10)

15M/013 40-60 cm bgs from NW corner of sq. 9 in structure 55.
28/Apr/2000

15J/043 0-20 cm bgs from NE corner of sq. 27 in structure 55.
(N of 28, E of 12)

15K/022 20-40 cm bgs from SE corner of sq. 12 in structure 55.

15L/006 0-20 cm bgs from SW corner of sq. 5 in structure 55.
(W of 1)

15K/023 40-60 cm bgs from SE corner of sq. 12 in structure 55.

15K/024 0-20 cm bgs from SE corner of sq. 13 in structure 55.
(E of 12)

25/4/2000

15J/043 0-20 cm bgs in sq. 27 HMS AJAX terminates for no good reason, while Suffolk is on S face.

15K/022 20-40 cm bgs in sq. 12 ~~THE~~ WARSPITE continues here, however there is a strange gap, the wall appears to be gaining in elevation, though whether this is as constructed or due to less tumbled, I am uncertain.

15L/006 0-20 cm bgs in sq. 5 The works here ended up going down to about 40 cm in the E portion of the square! There is a low wall in E face between sq. 5+1, there is also probably a wall between 5+6 on west side.

15K/023 40-60 cm bgs in sq. 12 Found HMS ROYAL OAK in E face of square, as well as cherting gap in WARSPITE.

15K/024 0-20 cm bgs in sq. 13, following WARSPITE.

15J/043 0-20 cm bgs in sq. 25 Wall HMS PRINCE OF WALES, which goes nowhere, and runs E/W, also back of BELFAST.

- 15L/007 0-20 cm bgs in sq. 6, possibly wall here between 6/5 but not sure...

15M/014 60-80 cm bgs in sq. 9, nothing down here, it seems QUEEN ELIZABETH is fairly shallow. will have S.

15J/044 0-20 cm bgs in sq. 26 Not much here but front of GLORIOUS, took in at level of SMALL-CLAWED.

15J/045 0-20 cm bgs in sq. 29, in back of GLORIOUS. AJAX terminates.

15K/025 0-20 cm bgs in sq. 14 came down on another wall
in front of WARSPITE, HMS ILLUSTRIOUS, will dig down
and verify.

1/May 2000

No lot
counts

15K/015 0-20 cm bgs in sq. 12 Continued follow of QER.

15K/026 20-40 cm bgs in sq. 14, digging down to clear ILLUSTRIOUS

15J/043 0-20 cm bgs from NE corner of sq. 25 in structure 55.
(S of 29, E of 24) ~~15J~~

15L/007 0-20 cm bgs from SW corner of sq. 6 in structure 55.
(W of 5)

15M/014 60-80 cm bgs from NW corner of sq. 9 in structure 55.

15J/044 0-20 cm bgs from NE corner of sq. 26 in structure 55.
(E of 25, S of 21)

15J/045 0-20 cm bgs from NE corner of sq. 28 in structure 55.
(N of 23, E of 27, S of 25)

15K/025 0-20 cm bgs from SE corner of sq. 14 in structure 55.
1/May/2000 (E of 13)

15M/015 0-20 cm bgs from NW corner of sq. 12 in structure 55.
(S of 9)

15K/026 20-40 cm bgs in sq. 14 in structure 55 (from SE corner)

15J/046 0-20 cm bgs from NE corner of sq. 30 in structure 55.
(S of 26, E of 29)

15M/016 0-20 cm bgs from NW corner of sq. 13 in structure 55.
(W of 4, S of 7, E of 12)

15K/027 0-20 cm bgs from SE corner of sq. 15 in structure 55.
(E of 14)

15J/047 0-20 cm bgs from NE corner of sq. 31 in structure 55.
(S of 30, E of 23)

15M/017 0-20 cm bgs from NW corner of sq. 14 in structure 55.
(S of 12)

15K/028 20-40 cm bgs in SE corner of sq. 13 in structure 55

15M/018 0-20 cm bgs from NW corner of sq. 15 in structure 55.
(S of 17, E of 14)

1/May/2000

15J/048 0-20 on bgs from SE corner of sq. 32 in structure 55.
(E of 30)15K/029 0-20 on bgs from SE corner of sq. 16 in structure 55.
(N of 15)15L/008 0-20 on bgs from SW corner of sq. 7 in structure 55.
(S of 14 in 15M)15J/049 0-20 on bgs from NE corner of sq. 33 in structure 55.
(S of 32, E of 31)15K/030 0-20 on bgs from SE corner of sq. 17 in structure 55.
(N of 16)~~15K/030~~ 15L/009 0-20 on bgs from SW corner of sq. 8 in structure 55.
(W of 4, E of 7, S of 15 in 15M)15K/031 0-20 on bgs from SE corner of sq. 18 in structure 55.
(E of 9, S of 33 in 15J)15J/050 0-20 on bgs from NE corner of sq. 34 in structure 55.
(N of 17 in 15K)15K/032 0-20 on bgs from SE corner of sq. 18 in structure 55.
(S of 18, N of 13)

4/May/2000

15J/051 0-20 on bgs from NE corner of sq. 35 in structure 55.
(N of 34)~~15K/032~~ 15M/019 0-20 on bgs from NW corner of sq. 4 in structure 55.
(S of 3, W of 7 in 15J)15K/033 0-20 on bgs from SE corner of sq. 20 in structure 55.
(N of 14) W of 16)

15M/020 20-40 on bgs from NW corner of sq. 4 in structure 55.

15M/021 0-20 on bgs from NW corner of sq. 5 in structure 55.
(S of 4, W of 6 in 15J)15K/034 0-20 on bgs from SE corner of sq. 21 in structure 55.
(N of 20, W of 17, E of 18)

15J/052 20-40 on bgs from NE corner of sq. 34 in structure 55.

| 5/May/2000 | | Final Notes | | Walk pg. 1 | | | |
|-----------------|-------------------------------|-------------------------------|---------------------|----------------------------------|--------------------|--------|----------------------------------|
| AMS. | Bottom ^m | Top ^m | Height ^m | Length ^m | Width ^m | Layers | Orientation ^o |
| Dreadnought | 100 cm | 70 cm | | 2.85 | 29 | 1 | 101-281 ^o |
| Repulse | 132 cm | 75 cm | | 7.11 | 34 | 2 | 99-279 ^o |
| Hood/Belfast | 127 | 52 | | 5.95 | 52 | 5 | 103-283 ^o |
| KG V ✓ | 112 cm | 51 cm | | 2.48 | 46 | 4 | 18-198 ^o |
| Q. Elizabeth ✓ | 70 cm | 44 cm | | 4.03 | 43 | 2 | 10°-190 ^o |
| Trafalgar ✓ | 85 cm | 64 cm | | 1.45 | 45 | 1 | 106-286 ^o |
| Rodney ✓ | 86 cm | 51 cm | | 3.68 | 82 | 4 | 107-287 ^o |
| Ajax ✓ | 76 cm | 64 cm | | 0.768 ^{1.44} | 30 | 1 | 190 -290 ^o |
| Achilles ✓ | 96 cm | 76 cm | | 0.68 | 19 | 1 | 8-188 ^o |
| Exeter ✓ | 106 cm | 82 cm | | 0.74 | 61 | 1 | 105-285 |
| L. Nelson | 97 cm | 53 cm | | 1.64 | 34 | 2 | 9-189 ^o |
| Warspite | 160 cm | 74 cm | | 2.91 | 31 | 5 | 101-281 ^o |
| Norfolk | 127 cm | 90 cm | | 3.48 | 41 | 2 | 104-284 ^o |
| P.O. Wales ✓ | 89 cm | 70 cm | | 0.98 | 31 | 1 | 106-286 ^o |
| Glorious ✓ | 134 cm | 67 cm | | 1.71 | 49 | 4 | 11-191 ^o |
| Suffolk ✓ | 105 ¹⁰⁵ | 74 ⁷⁴ | | 1.99 | 20 | 3 | 107-287 ^o |
| Indefatigable ✓ | N/A | 82 cm | | 2.55 | 25 | 1 | 11-191 ^o |
| Ark Royal ✓ | 136 cm | 89 cm | | 1.70 | 29 | 4 | 100-280 ^o |
| Victory ✓ | 106 cm | 74 cm | | 2.09 | 20 | 1 | 8-188 ^o |
| Illustrious ✓ | 167 cm | 140 cm | | 2.74 | 33 | 2 | 101-281 ^o |
| Stat ✓ | 138 cm | 79 cm | | 3.89 | 44 | 4 | 11-191 ^o |
| Polecat ✓ | 138 cm | 96 cm | | 2.64 | 55 | 3 | 96-276 ^o |
| Small-Clawed ✓ | 143 cm | 70 cm | | 6.56 | 49 | 4 | 10-190 ^o |
| Ermine/Hermes ✓ | 122 | 77 cm | | 3.47 | 57 | 3 | 93-273 ^o |
| Sheffield ✓ | N/A | 107 cm | | 1.99 | 18 | 1 | 8-188 ^o |
| Leander ✓ | N/A | 101 cm | | 1.82 | 21 | 1 | 10-190 ^o |
| Iron Duke ✓ | 110 cm | 84 cm | | 0.94 | 45 | | 114-294 ^o |
| Duke York ✓ | 149 cm | 111 ¹¹¹ | | 5.44 | 41 | 2 | 98-278 ^o |
| Sydney ✓ | N/A | 46 cm | | 0.71 | 24 | 1 | 14-194 ^o |
| Canberra ✓ | 86 cm | 65 cm | | 1.04 | 23 | 2 | 13-193 ^o |
| Auckland ✓ | 77 cm | 60 cm | | 1.62 | 15 | 2 | 13-193 ^o |
| Invincible ✓ | N/A | 120 cm | | 3.42 | 20 | 1 | 101-281 ^o |

4 15J/053 0-20 cm bgs from NE corner of sq. 36 in structure 55.
(W of 35, E of 32)

15K/038 0-20 cm bgs from SE corner of sq. 22 in structure 55.
(W of 18, N of 12, S of 4)

15L/010 0-20 cm bgs from SW corner of sq. 4 in structure 55.
(S of 5 in 15M, W of 5 in 15J, E of 8)

15N/001 0-20 cm from SW corner of sq. 1 in structure 55.

15K/036 0-20 cm bgs from SE corner of sq. 23 in structure 55.
(W of 22, N of 10)

15J/054 0-20 cm bgs from NE corner of sq. 37 in structure 55.
(S of 32, N of 17 15J)

15N/002 20-40 cm bgs from SW corner of sq. 1 in structure 55.

15J/055 20-40 cm bgs from NE corner of sq. 33 in structure 55.

15K/037 20-40 cm bgs from SE corner of sq. 17 in structure 55.

15L/011 0-20 cm bgs from SW corner of sq. 9 in structure 55.
(N of 5, W of 2)

15N/003 40-60 cm bgs from SW corner of sq. 1 in structure 55.

15N/004 0-20 cm bgs from SW corner of sq. 2 in structure 55.
(E of 1)

15J/056 clean-up of entire structure 55.

15N/005 20-40 cm bgs from SW corner of sq. 2 in structure 55.

9/May/2000

15N/006 40-60 cm bgs from SW corner of sq. 2 in structure 55.

15L/012 20-40 cm bgs from SW corner of sq. 9 in structure 55.

S/May/2000

Final Notes Walls pg 2

| HMS | Bottom | Top | Height | Length | Width | Layers | Orientation |
|-------------------------|-----------------------|-----------------------|--------|----------------------|-------|--------|-------------------------|
| Jamaica ✓ | 48 cm | 35 cm | | 1.10 | 23 | 1 | 10-190° |
| Rose ✓ | 103 cm | 62 cm | | 1.63 1.83 | 59 | 1 | 5-185° |
| Bounty | N/A | 83 cm | | 2.11 | 21 | 1 | 10-180° |
| Royal Oak ✓ | 100 cm | 145 cm | | 0.70 | 26 | 1 | 15-195° |
| Ramilles ✓ | 118 cm | 81 cm | | 1.76 | 45 | 2 | 21-201° |
| Botany Bay ✓ | 116 cm | 97 cm | | 1.48 | 21 | 1 | 90°-220° |
| Eagle ✓ | 135 cm | 106 cm | | 2.87 | 45 | 3 | 96-276 |
| Beagle | N/A | 58 cm | | 1.45 | 23 | 1 | 13-193° |
| Indomitable ✓ | 108 108 cm | 108 108 cm | | 0.82 | 18 | 2 | 20-200° |
| Devonshire | 101 cm | 76 cm | | 1.02 | 26 | 3 | 101 101-281° |
| Coatzacoatl ✓ | 105 cm | 136 cm | | 1.54 | 25 | 2 | 1-181° |
| Valiant Terminator ✓ | 125 cm | 105 cm | | 1.03 | 33 | 1 | 100-280° |
| Datum Level 91 cm | | | | | | | |

HMS ROYAL OAK Starting off with something uncertain, namely whether or not this is an actual wall is doubtful. It may instead be the edge of some fill that lies between DUKE OF YORK on the North, ILLUSTRIOUS on East and the excavation wall on South. Wall is 3 stones, river cobbles, the middle one tilted towards W or face of wall. * (x x) (x x) (x x)

HMS ILLUSTRIOUS This seems to be a short platform or terrace wall added on immediately in front (S of) Duke of York. It faces South and is composed of river cobbles of roughly the same size and shape. It intersects and is incorporated with COATZACOATL on East. (x x) (x x) (x x)

HMS DUKE OF YORK Probably the South face of a room here, wall is fairly substantial ~~not~~ like ILLUSTRIOUS. However, it is in worse shape than ILLUSTRIOUS with some tilting. It runs through to SMALL-CLAWED on the WEST where it intersects with a large corner stone (x x). This is actually a 3-way wall junction with DUKE OF YORK to East, SMALL-CLAWED to North, and WARSPITE to West. It is possible that DUKE OF YORK and WARSPITE are same wall, but if so * (1 x w x h) length across, x width front to back x height top to bottom

(cont. from 66)

it does a strange dog-leg in the middle.

(21 x 30 x 10) (45 x 25 x 17) (25 x 42 x 12) (27 x 33 x 15)

HMS EAGLE EAGLE is a fairly substantial wall running from STOUT in the East to SMALL-CLAWED in the West. It is the southern terminus for RAMILLES (which runs N to HERMES) as well. It is composed of river cobbles, flat sides South, and is more solid than many of the walls in the middle and Western parts of the structure. There is, however, considerable tilting throughout, possible due to tree roots like the one in the middle. It does not seem to be incorporated into other walls, but added in between.

(20 x 36 x 11) (28 x 25 x 7) (34 x 24 x 10) (27 x 21 x 8)

HMS INVINCIBLE Not much known about this wall, because only the top is exposed. It does however seem to parallel EAGLE, running between SMALL-CLAWED and STOUT, where it corners. Because it is a corner this wall probably predates DUKE OF YORK, and runs fairly deep, no way to be sure though.

(20 x 23 x 6) (27 x 17 x —) (22 x 21 x —) (15 x 23 x —)

HMS RAMILLES A damn ugly wall connecting HERMES with EAGLE. It is difficult to tell which side is the front, but I'm guessing that it is the East face. The wall is somewhat tumbled, getting lower and wider towards EAGLE (South End). I'm guessing that it was added on between the two walls, rather than incorporating.

(27 x 40 x 9) (25 x 20 x 10) (24 x 11 x —) (17 x 21 x 8)

HMS HERMES The main North wall is the Eastern portion of the structure. Hermes was probably the original connector between structures 54 and 55. It is still possible that it is a part of ERMINE, but if so the stones in this portion do not line up with those in structure 54. They are perhaps 25 cm further South, and at a slightly different angle than those of ERMINE.

There appears to be a gap in HERMES, filled in with stones, which seems a good width for a door. Best guess is about 67 cm wide. ~~This is also where~~ The East side of the "doorway" is also roughly where RAMILLES intersects HERMES. Apart from this gap, HERMES runs from STOAT, which it is incorporated with and continues roughly ~~ERMINE~~ to SMALL-CLAWED on the West. It is a solid and substantial looking wall, made more substantial by the fact that POLECAT is tacked to the front (N face) of it. (This wall has 2 faces, N + S). For descriptions of POLECAT, STOAT and COATZLI see structure 54 notes, little info has changed, except ~~COATZLI~~ ^{GIANT} COATZLI, STOAT' and STOAT all appear now to be in same line.

(32 x 23 x 7) (24 x - x 10) (27 x 23 x 8) (20 x 18 x 7)

HMS BOTANY BAY A relatively small wall, or at least what we can see of it. It runs from (but is not incorporated to) RAMILLES to SMALL-CLAWED, dividing the room defined by EAGLE and HERMES further. It is tilted considerably, and not in the best shape, but flat edge one to South. (27 x 21 x 12) (23 x 14 x 10) (15 x 28 x 6)

SMALL-CLAWED one of the most important walls in structure 55, and enough info learned to add to description already provided with structure 54. I think it is fairly safe to say that at one point SMALL-CLAWED was the East edge of structure 55. all of the walls described before this were added in to connect in various ways to final edge of structure 54, STOAT/COATZLI and hence to structure 55. On the East SMALL-CLAWED connects with POLECAT, ERMINE, Botany Bay, EAGLE, INVINCIBLE, and DUKE of YORK. On the West with WARSPITE, IRON DUKE, and REPULSE. In all the above cases it is the terminus for the walls as well.

One of the most significant features of SMALL-CLAWED is its southernmost stone. This stone measuring (51 x 42 x 15) seems to be a kind of 3 way junction between SMALL-CLAWED to North, DUKE of YORK to East, and WARSPITE to West. The flat side faces East, but the natural curve of the stone on the S side.

serves as a perfect transition between WARSPITE and DUKE OF YORK. There was a similar shaped & sized stone immediately on top of this, but it was accidentally removed during excavation.

Flat edge is readily apparent on East face of wall, and though wall is defined on W face, it is not done with same care, backing up idea that wall faces East. It maintains roughly same width all the way through and none of the walls except possibly REPULSE which it corners with on North are incorporated. One interesting thing is that no connection is made between SMALL-CLAWED/REPULSE, and GLORIOUS/HOOD-BELFAST except for IRON DUKE. Apart from that the two room walls remain completely unrelated, though they parallel and less than a meter separates them. Stone sizes taken from parts of SMALL-CLAWED nearly excavated.

(18 x 23 x 7) (26 x — x 12) (40 x 25 x 10) (23 x 27 x 8)

HMS SHEFFIELD Odd little wall running immediately behind (west of) SMALL-CLAWED between WARSPITE and IRON DUKE. It clearly fronts to the East, just as SMALL-CLAWED does. However, it appears much less substantial, at least on surface, and is composed of smaller stones. It is quite possible that it serves as the front of the fill to west of it, though the question of what LEANDER is, is raised. It is possible that SHEFFIELD is simply fill in rows behind SMALL-CLAWED. (31 x 22 x 8) (32 x 17 x 14) (16 x 14 x 6) (21 x 13 x 10)

HMS LEANDER This is either a wall, or a line of fill. It lies immediately behind (to west of) SHEFFIELD, just as SHEFFIELD lies behind SMALL-CLAWED. It too runs from WARSPITE to IRON DUKE, dense stone fill lies behind it, which covered all area between LEANDER, GLORIOUS, ARK ROYAL, VICTORY and WARSPITE. (19 x 23 x 8) (15 x 21 x 8) (15 x 25 x —) (14 x 14 x —)

HMS IRON DUKE Substantial but ugly wall connecting GLORIOUS with SMALL-CLAWED. It is difficult to tell which side face is on, but I'd say the North. Besides being the only connector between 2 sets of

OR walls (see above), it is also the ^{Northern} terminus for LEANDER, SHEFFIELD and the rock fill to the south. It seems pretty badly tilted, but probably not all that nicely constructed in the first place
 $(30 \times 29 \times 11)$ $(24 \times 28 \times 14)$ $(17 \times 15 \times 7)$

HMS GLORIOUS A rather important wall, at one point, probably the East wall of structure 55. When SMALL-CLAWED and REPULSE were built the intervening space was filled in with dirt and rocks. On the South it corners with ARK ROYAL and on the North with BELFAST/HOOD. I would define it as a summit wall, though KGV is higher. There's so much going on here, that it is difficult to say where a summit is. The construction here is solid, though the wall not very wide. The ^{2 rows of} river cobbles are orientated to face flat side out, so the wall is faced on both East and West sides, just as SMALL-CLAWED is, only a bit nicer here. Preservation is worst in South end, where some stones had slid off into the fill.

$(25 \times 32 \times 8)$ $(22 \times 18 \times 7)$ $(29 \times 22 \times 8)$ $(25 \times 29 \times 12)$

HMS ARK ROYAL A wall of the same era as GLORIOUS, which it corners with. A well-made wall, there is very little tilted or missing save for the Westernmost $\frac{3}{4}$ in where the entire 3rd & 4th rows of stones are gone. I think this occurred over time, or when the space between this and WARSPITE was filled in, but the wall might have been constructed with an area 15 cm lower than the rest. Unfortunately ARK ROYAL becomes untraceable because it disappears under VICTORY at Western edge. It is also Southern terminus for INDEFATIGABLE.

$(20 \times 15 \times 14)$ $(29 \times - \times 6)$ $(15 \times 20 \times 5)$ $(23 \times - \times 10)$

HMS VICTORY A strange one. VICTORY runs from just N of WARSPITE (it probably used to intersect to ~~just~~ DEVONSHIRE. However, it is only 1 layer deep, and makes the large elevation gain 'floating' on soil and terminal debris. Not a very good construction technique, methinks. It seems the fill contained by WARSPITE and SMALL-CLAWED

also served to keep VICTORY from falling in. Not really sure what purpose VICTORY served, though.

(46 x 18 x 15) (29 x 24 x 12) (28 x 21 x 9) (22 x 20 x 8)

HMS INDEFATIGABLE Not much to say about this wall, since the top is the only part exposed. It runs from ARK ROYAL to PRINCE OF WALES, and serves as the Eastern terminus for DEVONSHIRE and SUFFOLK. (38 x 26 x —) (23 x 34 x —) (44 x 27 x —)

HMS DEVONSHIRE This narrow wall runs between KGV/RODNEY's intersection and INDEFATIGABLE. Though it may be a continuation of RODNEY, I think this unlikely, as DEVONSHIRE is lower, and narrower. It seems to face to the South, flat sides out. It is the North terminus for VICTORY. Unable to excavate front due to VICTORY and fill behind it. (19 x 26 x —) (16 x 18 x 4) (23 x 22 x 5)

HMS SUFFOLK SUFFOLK runs west from INDEFATIGABLE and ends about 30m from ACHILLES. It could be a continuation of ACHILLES, itself a possible link with TRAFALGAR. (22 x 18 x 8) (23 x 20 x 12) (16 x 23 x 7)

HMS PRINCE OF WALES Not really sure why this little wall is here. However it seems to set off a very small room or platform bordered by CANBERRA and BELFAST/ROOD. Does not intersect with anything else. (34 x 22 x 8) (18 x 31 x 9) (21 x 33 x 13) (26 x 31 x 11)

HMAS CANBERRA As mentioned above enclosed a small area with HMS BELFAST, runs parallel but not adjoining GLORIOUS. Incorporates with WALES and BELFAST. (18 x 27 x 8) (19 x 22 x 11) (12 x 20 x 6)

HMAS AJAX Very much like SUFFOLK, in that it goes nowhere! Only this time it comes off of KGV and heads East where it ends 42m from INDEFATIGABLE. One theory of mine is that AJAX is the top of a series of steps, Exeter being the bottom.

one. This is probably because AJAX and EXETER fit nicely into the open space removed from 1400. AJAX is "floating" on dirt, and its four stones are widely spaced. $(16 \times 22 \times 8)$ $(35 \times 30 \times 14)$ $(25 \times 31 \times 9)$ $(24 \times 25 \times 10)$ Face is most likely to South, but could be North as well.

HMS EXETER, This wall runs East from KGV and into wall of excavation under PRINCE OF WALES. As mentioned above, it is possible that this is some kind of steps. There are 4 "levels" including AJAX and EXETER, with two rather shabby ones in between. Unfortunately, impossible to tell where EXETER ends. Stones are flat end out, but more rounded than most walls in structure, not rectangular.
 $(17 \times 24 \times 9)$ $(11 \times 19 \times 14)$ $(16 \times 14 \times 12)$ $(15 \times 16 \times 14)$

HMS ACHILLES Not much known, but some theories! I think ACHILLES is a corner with TRAFALGAR which runs underneath KGV, then ACHILLES goes N under AJAX, very little is exposed. Flat sides to East however, and at corner to South. $(37 \times 18 \times 13)$ $(24 \times - \times 10)$

HMS INDOMITABLE A wall from nowhere to nowhere. This wall was uncovered to look for West wall of structure 55. I wonder if it is not the West wall of another structure though. I had been unable to find any walls directly linking JAMAICA or ROSE with rest of structure, except possible VALIANT. Anyway, this is an ugly wall, not much of an attempt to put blocks of same size/shape together or anything. There is also some tilting in South end, and a possible corner there $(23 \times - \times 12)$ $(24 \times - \times 10)$ $(24 \times 18 \times 8)$

HMS ROSE I'm not really sure if this wall is in structure 55, or if it is the first wall in another structure to the West, and later connected to 55 by walls like VALIANT. I'm unfortunately unable to say much more about it, because we ran out of time to excavate, but it probably has something to do with JAMAICA.
 $(26 \times 48 \times 8)$ $(26 \times 58 \times 12)$ $(23 \times 42 \times 11)$ $(25 \times - \times 8)$

HMAS SYDNEY I only know 3 stones in this wall, so I'm only mostly certain that one is here. The tops are the only portion excavated as well. Nevertheless the flat sides seem to be towards the West, with one stone part of the back of this wall. It runs south from RODNEY, set about 20 m back from ELIZABETH.
 $(22 \times 15 \times -)$ $(27 \times 16 \times -)$ $(26 \times 23 \times -)$

HMNZS AUCKLAND Strange little wall coming North off of RODNEY. All we had time to excavate was the first two layers of this wall. It's odd because the stones that make it up are so small and it is so narrow. Probably same time period as KGV or LORD NELSON. There is possibly a doorway in Northern SG or between AUCKLAND and HOOD. $(23 \times 12 \times 4)$ $(19 \times 15 \times 4)$ $(9 \times 12 \times -)$ $(10 \times 11 \times 3)$

HMS JAMAICA Almost strictly guesswork on this one because very little exposed. The wall seems to be oriented facing East, so I think maybe at one point this was a separate structure (not SS) and SYDNEY/QUEEN ELIZABETH were the last walls of structure SS. I also think JAMAICA had a corner with a wall going off to the West. Unfortunately we accidentally removed the corner stone in excavation, but you can see one of the stones on the West wall $(24 \times 22 \times 8)$ $(24 \times 22 \times 10)$

HMS VALIANT Little ugly wall, not particularly built with same size/shape stones. The flat sides are to South, but not all that flat seen wall was built to connect NORFOLK with ROSE, but may pass behind NORFOLK, in middle of NORFOLK and WARSPITE. Second row of stones seems to line up with WARSPITE.
 $(31 \times 31 \times 13)$ $(16 \times 25 \times 7)$ $(18 \times 18 \times 8)$ $(18 \times 19 \times 4)$

QUEEN ELIZABETH Main Western wall of structure SS, and possibly edge. Probably not the original West wall though because it is not all that deep. It is however fairly solid construction, large river cobbles flat sides out. It is the terminus for REPULSE, HOOD, and RODNEY, all major walls in structure SS. One curious fact is

that the back of the wall is made up of much smaller stones, placed flat side East

$(28 \times 24 \times 8)(21 \times 14 \times 13)(22 \times 27 \times 12)(20 \times 25 \times 8)$

HMS TRAFALGAR An older wall, I think. Along with Achilles I think it guess, it comes with, I feel that it may be the remain of an original wall, possibly predating KGV and RODNEY. It is of an odd construction, however. The face seems to be toward the South where the stones are flat sided. There is no attempt to make a flat face in back and the stones of the second row are every which way. There is also a large spacing between the stones - 1 or 2 cm, most walls in structure 55 have much less.

$(21 \times 17 \times -)(15 \times 18 \times -)(18 \times 16 \times -)(13 \times 20 \times -)$

HMS KING GEORGE V Ugly and weird little wall. Very badly tumble wall, that may actually be two walls, a second built on the less-sloppy original. The original KGV is large river cobbles, flat sides West in 3 rows. What's odd is that this wall slopes downward from its originating point at HOOD to its terminus at TRAFALGAR (no quite reaching RODNEY). $(26 \times 20 \times 5)(26 \times - \times 17)(20 \times - \times 18)(18 \times 27 \times 7)$

The second KGV, is either a late, very messy wall, or tumble, but I'm inclined to favor the former. It seems to have been built at a slightly different angle than the older wall, ($-^\circ$) versus ($-^\circ$). It also continues all the way to RODNEY, without losing altitude. It serves as the WESTERN terminus for AJAX and EXETER, as well as being on top of ACHILLES. The upper wall uses stones of many different shapes and sizes, without flat sides $(17 \times 16 \times 7)(22 \times 24 \times 17)(13 \times 17 \times 8)(14 \times 14 \times 6)$

HMS RODNEY One of the 4 Summit walls (along with HOOD, KGV, and QUEEN ELIZABETH). Like HOOD, RODNEY is fairly solid and wide as well. It has both a Southern (outside) and a Northern face, though the SOUTHERN face utilizes much larger stones, and more rounded, while the North face uses long flat stones

chinked with smaller ones. The portion of RODNEY I'm still most certain about is in the axial trench where I had time to dig down. It seems that RODNEY runs all the way West to ELIZABETH however, and at same width, though because of the constraints I'm having to go by the tops of stones. RODNEY ends on WEST at same time KGV and LORD NELSON branch off it. It serves as Northern terminus for NELSON, BEAGLE, and SYDNEY, and a Southern terminus for AUCKLAND, KGV, and ELIZABETH.

South: $(33 \times 29 \times 18)$ $(28 \times 20 \times 19)$ $(21 \times 27 \times 9)$ $(23 \times 27 \times -)$

North: $(23 \times 15 \times 10)$ $(25 \times - \times 7)$ $(33 \times 23 \times 9)$ $(11 \times - \times 7)$

HMS BEAGLE It is possible that BEAGLE is the actual terminus, or was at one point of RODNEY - rather than QUEEN ELIZABETH. Either that or it is built on/incorporated with RODNEY, however it also runs South from RODNEY. Stones are large and flat, with flat side out to West, only 1 row wide.

$(25 \times 18 \times 6)$ $(28 \times 23 \times 9)$ $(20 \times 23 \times 11)$ $(18 \times 17 \times -)$

HMS BOUNTY 5 stones are visible in this wall, which is an older one, predating NELSON I would assume. Probably put in at same time as WARSPITE, and may in fact corner with it, though NORFOLK makes this impossible to say for sure. It connects WARSPITE to RODNEY. The stones are long and narrow in shape with the flat side out towards the West. Its Southern terminus also precisely matches the "hook" in NORFOLK where one can see WARSPITE.

$(35 \times 20 \times -)$ $(39 \times 21 \times -)$ $(33 \times 25 \times -)$ $(43 \times 23 \times -)$

HMS LORD NELSON Really ugly wall, maybe the ugliest in the whole structure. Because it's built from such small stones it's very badly tumbled. The stones are oriented flat side out to West, and to a lesser extent to East. This could just be due to the fact that tumbling was more pronounced ~~today~~ in back (East) of wall. NELSON runs from WARSPITE to RODNEY, a

continuation of line from HOOD to RODNEY via K6V, could even become wall as later K6E.

(26 x 12) (18 x 15 x 11) (20 x 9 x 7) (11 x 16 x 6)

HMS WARSPITE One of the more important walls in structure 55, and maybe the most important on the ~~the~~ South face. It does have its surprises, however. One strange feature is its many gaps in the stonework. The western portion of WARSPITE is fringed by NORFOLK, tacked right on. However there is a nook in NORFOLK which exposes WARSPITE, and very well preserved. This nook is also where BOUNTY intersects WARSPITE. This could be a corner (see BOUNTY above) but looking at nook, I'm doubtful. The question then is where is the corner? There is a line of stone ~~backing~~ off to North, but of very different construction than WARSPITE.

WARSPITE changes character at VICTORY, and becomes a much lower wall, though still same style of construction and some line. Immediately East of VICTORY there is a gap of 50 cm and then WARSPITE resumes, having dropped 80 cm in height. It continues at this height until hitting the large boulder at SMALL-CLAWED with one exception. There is a 35 cm gap in the wall, which doesn't appear to line-up with anything. Odd.

(31 x 18 x 8) (32 x 17 x 9) (23 x 30 x) (15 x - x 8)

HMS NORFOLK This wall is tacked onto front of WARSPITE, and is composed of massive river cobbles. It actually runs beyond WARSPITE all the way to near ~~VALIANT~~ VALIANT. Probably its most significant feature is the NOOK in the middle where BOUNTY intersects with WARSPITE. It runs from VICTORY to VALIANT.

(45 x 14) (32 x 37 x 24) (27 x 33 x 10) (20 x 23 x 11)

HMS DREADNAUGHT A strange wall. It doesn't go anywhere, nor does it connect with anything. Its construction of large irregular shaped stones placed with little particular care seems to place its construction (and association?) with the adjacent structure 57.

Not really sure why this wall is here.

(17 x 15 x 14) (37 x 30 x 16) (28 x 21 x 14) (33 x 30 x 15)

HMS REPULSE The final basal wall on the North side of structure SS. An important wall, and most likely constructed at the same time as SMALL-CLAWED, which it corners with in the East. The construction of REPULSE is not as good as that of SMALL-CLAWED, however. While many of the stones are oriented flat side outward, not all are. REPULSE also contains the only non river-cobbles in structures 54 + 55. There are two limestone cut blocks which more or less flank the removed portion of HOOD and the "stairs" that Exeter and AJAX form. REPULSE also corners with QUEEN ELIZABETH in West. Between REPULSE and HOOD there is a stone floor, or at least fill. There is also a platform projecting out 78 cm from REPULSE to North. It starts 2.25 m from ELIZABETH and is 1.20 m long.

(57 x 31 x 10) (48 x 33 x 13) (19 x 25 x 7) (31 x 33 x 8) (24 x 23 x 11)
 cut block cut block

HMS HOOD/HMS BELFAST Why the two names? Because originally I thought that there were 2 separate walls divided by a cm gap. Not so as it turned out. Upon digging down in that gap I hit two things. The first was a body, and right beneath it? Part of HOOD. It seems that for whatever reason the middle section of HOOD had been removed. It possibly was to build a sort of formal entrance with REPULSE's cut blocks and AJAX and EXETER, they are all in a line. My guess as to the body is that it was buried in the 'doorway' much later. So while BELFAST became its own wall, it was once part of HOOD, hence the dual designation.

(35 x 21 x 13) (25 x 18 x 7) (25 x 19 x 6) (30 x 28 x 15) (18 x 10 x 24)

Hood is also the tallest and most substantial wall in SS. The inside (South) face is especially built with core. Probably the original or 2nd generation summit wall. It connects with ELIZABETH, KGV, GLORIOUS and . All stones are laid flat side out (North + South) and are in good shape.

Kenyon College - Naco Valley Archaeological Project - Burial Excavation Notes

Date 14/Feb/2000

Date of excavation 14/Feb/2000 Excavator 11

Site Coyote

Burial ID# _____

Unit _____

Level _____

Provenience 158/031

Burial Orientation _____

Field Age Assessment _____

Field Sex Assessment _____

Associated Funerary Remains:

General Excavation Notes:

The jaw was smashed on a rock. The soil around it is hard, clayey, with many small inclusions and sherds. NE of jaw soil is darker and softer than around the jaw.

| LOT# | CONTENTS | Depositional Significance | Provenience | Timespans |
|---------|--|-----------------------------|---|-----------|
| 15B/001 | 26 sherds 2 obsidian | Post Abandonment Debris | 0-1m N from S end of axial trench; 0-.2m bgs. SEC; Strata 1 & 2. | 1 |
| 15B/002 | 265 sherds 1 cut stone 2 obsidian 2 bajareque | Post Abandonment Debris | 0-1m N from S end of axial trench; .2-.4m bgs. SEC; Stratum 2. | 1 |
| 15B/003 | Not Catalogued | Terminal Debris (Secondary) | 0-1m N from S end of axial trench; .4-.6m bgs. SEC; Strata 2 & 3. | 1 & 2 |
| 15B/004 | 86 sherds 4 chert 3 obsidian | Terminal Debris (Secondary) | 0-1m N from S end of axial trench; .6-.7m bgs. SEC; Stratum 3. | 5 |
| 15B/005 | 22 bajareque 1 chert | Terminal Debris (Secondary) | 1-2m N from S end of axial trench; 0-.2m bgs. SEC; Strata 1 & 2. | 1 |
| 15B/006 | 417 sherds 10 chert 8 obsidian 4 bajareque 2 figurines | Terminal Debris (Secondary) | 1-2m N from S end of axial trench; .2-.45m bgs. SEC; Stratum 2. | 1 & 2 |
| 15B/007 | 155 sherds 2 bajareque 2 obsidian 1 cut stone | Terminal Debris (Secondary) | 2-3m N from S end of axial trench; 0-.2m bgs. SEC; Strata 1 & 2. | 1, 2, & 3 |
| 15B/008 | 194 sherds 60 bajareque 3 chert 2 obsidian 3 plaster pieces 1 cut stone | Terminal Debris (Secondary) | 3-4m N from S end of axial trench; 0-.25m bgs. SEC; Strata 1 & 2. | 1 & 3 |
| 15B/009 | 72 sherds 5 bajareque 9 plaster pieces 1 figurine 3 obsidian | Terminal Debris (Secondary) | 4-5m N from S end of axial trench; 0-.3m bgs. SEC; Strata 1 & 2. | 1, 3, & 4 |
| 15B/010 | 132 sherds 1 bajareque 6 obsidian 1 incensario | Terminal Debris (Secondary) | 5-6m N from S end of axial trench; 0-.2m bgs. NWC; Strata 1 & 2. | 1 & 4 |

| | | | | |
|---------|---|--------------------------------|--|-----------|
| 15B/011 | Not Catalogued | Terminal Debris (Secondary) | 5-6m N from S end of axial trench; .2- .4m bgs. NWC; Stratum 2. | 1 & 4 |
| 15B/012 | 80 sherds 13 bajareque 6 incensarios strap handle 3 incensarios | Terminal Debris (Secondary) | 6-7m N from S end of axial trench; 0- .3m bgs. NWC; Strata 1 & 2. | 1, 2, & 4 |
| 15B/013 | 167 sherds 2 bajareque 11 obsidian | Terminal Debris (Secondary) | 7-8m N from S end of axial trench; 0- .25m bgs. NEC; Strata 1 & 2. | 1, 2, & 4 |
| 15B/014 | 80 sherds 3 bajareque | Terminal Debris (Secondary) | 7-8m N from S end of axial trench; .25-.4m bgs. NEC; Stratum 2. | 2 & 4 |
| 15B/015 | 97 sherds 5 bajareque 1 obsidian 1 metate | Terminal Debris (Secondary) | 8-9m N from S end of axial trench; 0- .2m bgs. NWC; Strata 1 & 2. | 1 & 4 |
| 15B/016 | 478 sherds 2 incensarios 1 partial whistle 6 chert 11 obsidian 6 bajareque | Terminal Debris (Secondary) | 9-10m N from S end of axial trench; 0-.1m bgs. NWC; Strata 1 & 2. | 1 |
| 15B/017 | 781 sherds 17 bajareque 3 incensarios 3 figurines 1 chert 18 obsidian 6 bones | Terminal Debris (Secondary) | 10-11m N from S end of axial trench; 0-.2m bgs. NWC; Strata 1 & 2. | 1 |
| 15B/018 | 438 sherds 4 bajareque 1 obsidian 2 incensarios 4 chert 1 figurine | Terminal Debris (Secondary) | 9-10m N from S end of axial trench; .1-.25m bgs. NWC; Strata 1 & 2. | 1 |
| 15B/019 | Not Catalogued | Terminal Debris (Secondary) | 8-9m N from S end of axial trench; .2- .45m bgs. NWC; Stratum 2. | 1 & 4 |
| 15B/020 | 552 sherds 1 figurene | Terminal Debris (Secondary) | 10-11m N from S end of axial trench; | 1 |

| | | | | |
|---------|--|--------------------------------|---|--------|
| | 2 candelero 3 incensario 4 bajareque | | .2-.4m bgs. NWC; Stratum 2. | |
| 15B/021 | 687 sherds 11 bajareque 1 figurine 3 chert 1 bone 13 obsidian | Terminal Debris (Secondary) | 10-11m N from S end of axial trench; .4-.6m bgs. NWC; Stratum 2. | 1 |
| 15B/022 | 423 sherds 7 chert 3 figurines 1 incensario 10 obsidian 15 bajareque | Terminal Debris (Secondary) | 0-1m W from lot 15B/016; 0-.2m bgs. NWC; Strata 1 & 2. | 1 |
| 15B/023 | 715 sherds 7 incensarios 5 candeleros 3 bajareque 27 Obsidian 5 bones 2 chert 1 piece of plaster 1 ciyo? | Terminal Debris (Secondary) | 0-1m W from lot 15B/016; .2-.4m bgs. NWC; Stratum 2. | 1 |
| 15B/024 | 2/4 sherds 1 incensario 5 obsidian 1 chert 1 candelero 3 bajareque | | 0-1m W from lot 15B/015; 0-.2m bgs. NWC; Strata 1 & 2. | 1 & 4 |
| 15B/025 | 3 sherds | Backfill Lot | Backfill Lot | |
| 15B/026 | 254 sherds 2 bajareque 4 obsidian 5 bones | | 0-1m W from lot 15B/015; .2-.4m bgs. NWC; Stratum 2. | 1 & 4 |
| 15B/027 | 189 sherds 1 figurine 3 bajareque 5 obsidian 1 chert | | 1-2m W from lot 15B/015; 0-.2m bgs. NWC; Strata 1 & 2. | 1 & 4 |
| 15B/028 | 168 sherds 1 bajareque 7 obsidian 2 chert 2 figurines | | 1-2m W from lot 15B/015; .2-.4m bgs. NWC; Stratum 2. | 1 & 4 |
| 15B/029 | 39 sherds | | 2-3m W from lot | Str 55 |

?
sello
(stamp)

| | | | | |
|---------|--|--|--|--|
| | 3 chert | | 15B/015; 0-.1m bgs. NWC; Strata 1 & 2. | |
| 15B/030 | 545 sherds 3 chert 2 incensarios 6 bones 2 figurines 2 bajareque 14 obsidian | | 2-3m W from lot 15B/016; 0-.2m bgs. NWC; Strata 1 & 2. | |
| 15B/031 | 1228 sherds 9 figurines 6 bajareque 19 obsidian 8 chert 2 incensario 1 candelero | | 2-3m W from lot 15B/016; .2-.4m bgs. NWC; Stratum 2. | |
| 15B/032 | 14 sherds | | 3-4m W from lot 15B/015; 0-.1m bgs. NWC; Strata 1 & 2. | |
| 15B/033 | 203 sherds 4 bajareque 1 plaster piece 1 chert 1 candelero 4 incensarios 6 obsidian 2 stone manos | | 2-3m W from lot 15B/015; .1-.4m bgs. NWC; Strata 1 & 2. | |
| 15B/034 | 522 sherds 7 chert 12 obsidian 2 bajareque 2 figurines 6 incensarios 1 plaster piece | | 3-4m W from lot 15B/016; 0-.2m bgs. NWC; Strata 1 & 2. | |
| 15B/035 | 882 sherds 2 figurine 2 bajareque 5 obsidian | | 3-4m W from lot 15B/016; .2-.4m bgs. NWC; Stratum 2. | |
| 15B/036 | 719 sherds 3 bajareque 2 chert 1 incensario | | 3-4m W from lot 15B/016; .4-.5m bgs. NWC; Stratum 2. | |
| 15B/037 | 629 sherds 3 bajareque | | 4-5m W from lot 15B/016; 0-.2m | |

| | | | | |
|---------|--|--|---|--|
| | 6 obsidian 3 incensarios 2 candelero | | bgs. NWC; Strata 1 & 2. | |
| 15B/038 | Not Catalogued | | 4-5m W from lot 15B/015; 0-.1m bgs. NWC; Strata 1 & 2. | |
| 15B/039 | 150 sherds 3 chert | | 2-3m W from lot 15B/016; .4-.45m bgs. NWC; Stratum 2. | |
| 15B/040 | 690 sherds 10 chert 7 incensarios 2 figurines 3 bajareque 10 obsidian | | 4-5m W from lot 15B/016; .2-.4m bgs. NWC; Stratum 2. | |
| 15B/041 | 30 sherds 4 obsidian 1 chert | | SE .15 x .15m of 2-3m W from lot 15B/016; .1-.4m bgs. NWC; Stratum 2. | |
| 15B/042 | 469 sherds 9 obsidian 7 bajareque 4 incensarios 2 chert | | 5-6m W from lot 15B/016; 0-.2m bgs. NWC; Strata 1 & 2. | |
| 15B/043 | 47 sherds 7 obsidian 1 chert | | 5-6m W from lot 15B/016; .2-.4m bgs. NWC; Stratum 2. | |
| 15B/044 | Not Catalogued | | 5-6m W from lot 15B/016; .4-.5m bgs. NWC; Stratum 2. | |
| 15B/045 | 217 sherds 1 plaster piece 1 bajareque 20 obsidian 2 chert | | 5-6m W from lot 15B/017; 0-.2m bgs. NWC; Strata 1 & 2. | |
| 15B/046 | 3 obsidian 1 chert 2 incensarios | | 5-6m W from lot 15B/015; 0-.4m bgs. NWC; Strata 1 & 2. | |
| 15B/047 | 105 sherds 9 obsidian | | 4-5m W from lot 15B/015; 0-.4m | |

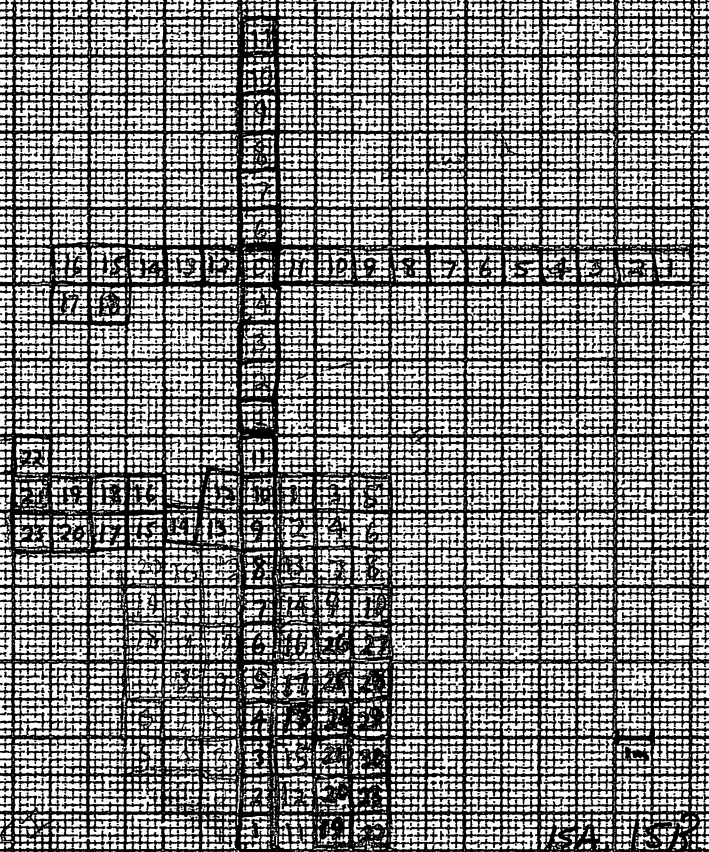
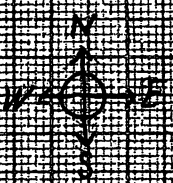
| | | | | |
|---------|--|--|--|-------|
| | 2 chert | | bgs. NWC; Strata 1 & 2. | |
| 15F/001 | 132 sherds 15 obsidian 3 chert 2 bajareque | | 0-1m E from lot 15B/016; 0-.2m bgs. NEC; Strata 1 & 2. | 1 |
| 15F/002 | 823 sherds 2 bajareque 1 candelero 1 chert 2 incensarios | | 0-1m E from lot 15B/016; .2-.4m bgs. NEC; Stratum 2. | 1 |
| 15F/003 | 187 sherds 1 part of whistle | | 0-1m E from lot 15B/015; 0-.2m bgs. NEC; Strata 1 & 2 | 1 & 4 |
| 15F/004 | 156 sherds 1 obsidian | | 0-1m E from lot 15B/015; .2-.4m bgs. NEC; Stratum 2. | 1 & 4 |
| 15F/005 | Not Catalogued | | 1-2m E from lot 15B/016; 0-.2m bgs. NEC; Strata 1 & 2 | 1 |
| 15F/006 | 175 sherds 3 bajareque 1 chert | | 1-2m E from lot 15B/015; 0-.2m bgs. NEC; Strata 1 & 2 | 1 & 4 |
| 15F/007 | Same as 15F/004 | | | |
| 15F/008 | Not Catalogued | | 1-2m E from lot 15B/016; .2-.4m bgs. NEC; Strata 1 & 2 | 1 |
| 15F/009 | Not Catalogued | | 1-2m E from lot 15B/015; .2-.4m bgs. NEC; Stratum 2 | 1 & 4 |
| 15F/010 | 306 sherds 1 chert 1 bajareque 1 obsidian | | 2-3m E from lot 15B/016; 0-.2m bgs. NEC; Strata 1 & 2 | 1 |
| 15F/011 | 605 sherds 8 chert 5 bajareque 1 incensario 8 obsidian | | 2-3m E from lot 15B/016; .2-.4m bgs. NEC; Stratum 2 | 1 |

| | | | | |
|---------|--|--|--|-------|
| 15F/012 | 112 sherds 1 chert | | 2-3m E from lot 15B/015; 0-.2m bgs. NEC; Strata 1 & 2 | 1 & 4 |
| 15F/013 | 605 sherds 7 chert 6 bajareque 1 figurine 2 quartz | | 2-3m E from lot 15B/015; .2-.4m bgs. NEC; Stratum 2 | 1 & 4 |

| TIMESPANS | UNITS | FEATURES | STRATA | LOTS |
|--------------------------------------|----------------------------|--------------------------------------|--------------|---|
| 1-Abandonment Of Structure 54 | | Features 1, 2, 3, 4, 5, 6, 7, & 8 | Strata 1 & 2 | 15A/001-15A/011, 15B/001-15B/003, 15B/005-15B/013, 15B/015-15B/021 |
| 2-Construction Of Final Additions | Units 3, 4, 8, 11, & 12 | | Strata 1&2 | 15B/003, 15B/006, 15B/007, 15B/012- 15B/014 |
| 3-Construction Of Outer Platform | Units 1, 9, 14, & 15 | | Strata 1&2 | 15B/007-15B/009 |
| 4-Original Construction | Units 2, 6, 7, 9, & 10 | | Strata 1&2 | 15A/001-15A/015, 15B/009-15B/015, 15B/019 |
| 5-Pre-Construction | | | Stratum 3 | 15A/016, 15B/004 |

str 54

~



ISA, ISB, ISC, ISD,

15A

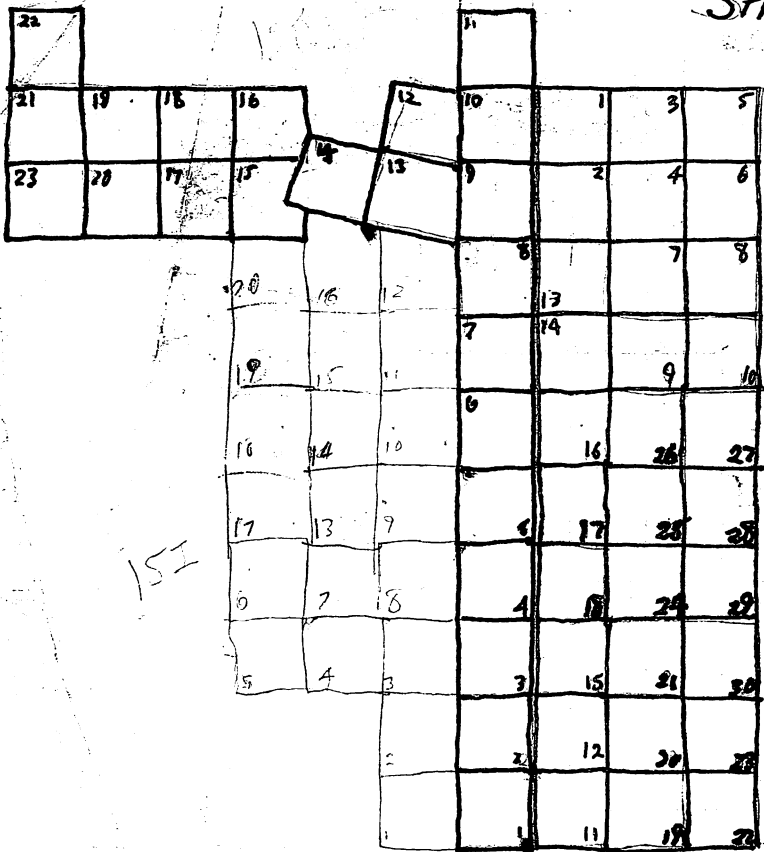
Sub-Op

15A

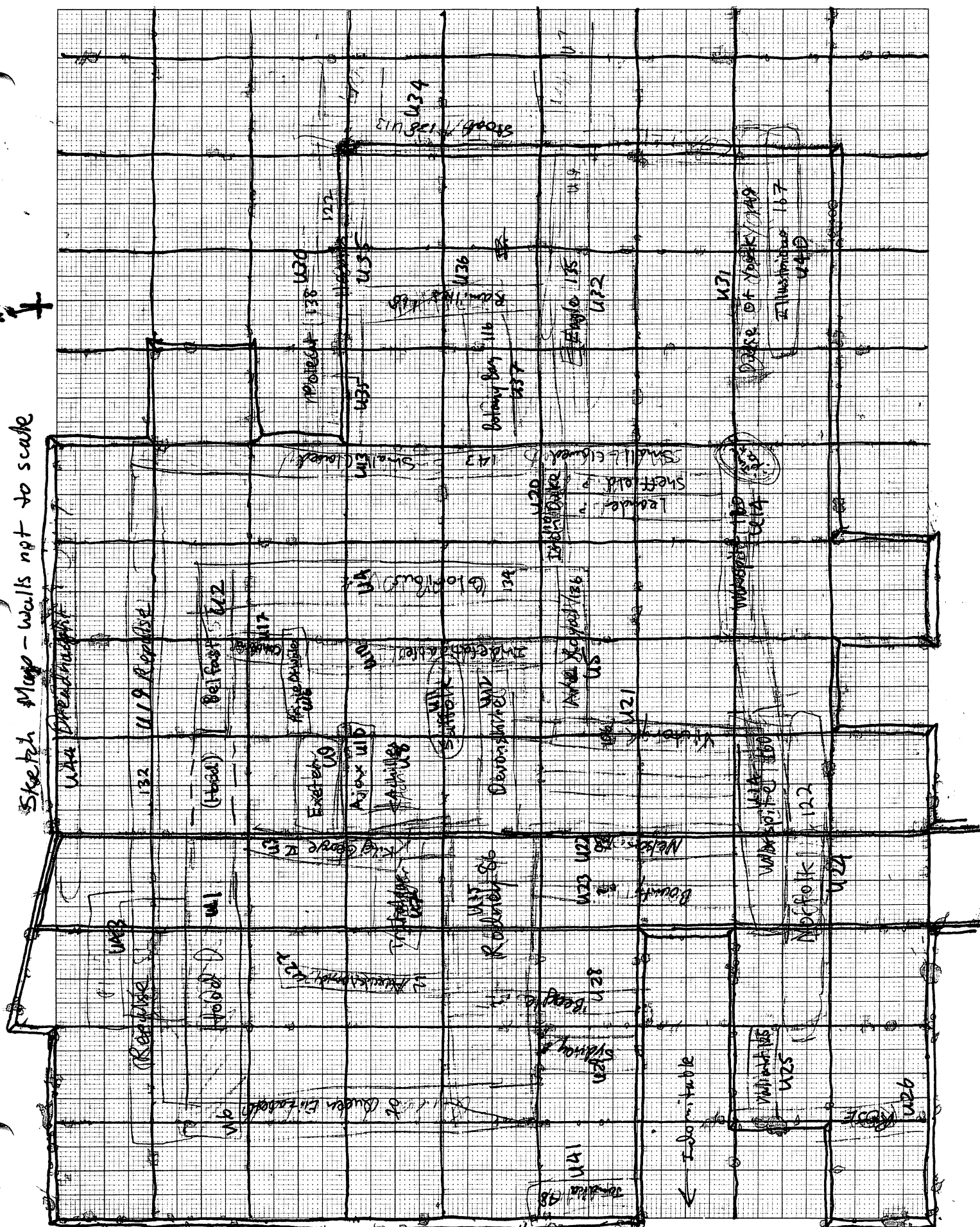


| | | | | |
|----|----------|----|----|----|
| 11 | | | | |
| 10 | | 1 | 3 | 5 |
| 9 | | 2 | 4 | 6 |
| 8 | | | 7 | 8 |
| 7 | 13 14 | | | |
| 6 | | | 9 | 10 |
| | | 16 | 26 | 27 |
| 5 | | 17 | 25 | 28 |
| 4 | | 8 | 24 | 29 |
| 3 | | 15 | 23 | 30 |
| 2 | | 12 | 22 | 31 |
| 1 | | 11 | 21 | 32 |

Structure 54



Skeleton Map - walls not to scale



Plan
Scale 1:10
Long 5 1/2" x 8"

