

# Kenyon College

## Digital Kenyon: Research, Scholarship, and Creative Exchange

---

Orville E. Watson, D.D. Postcard Collection

Archives

---

June 2015

## Pris du Village

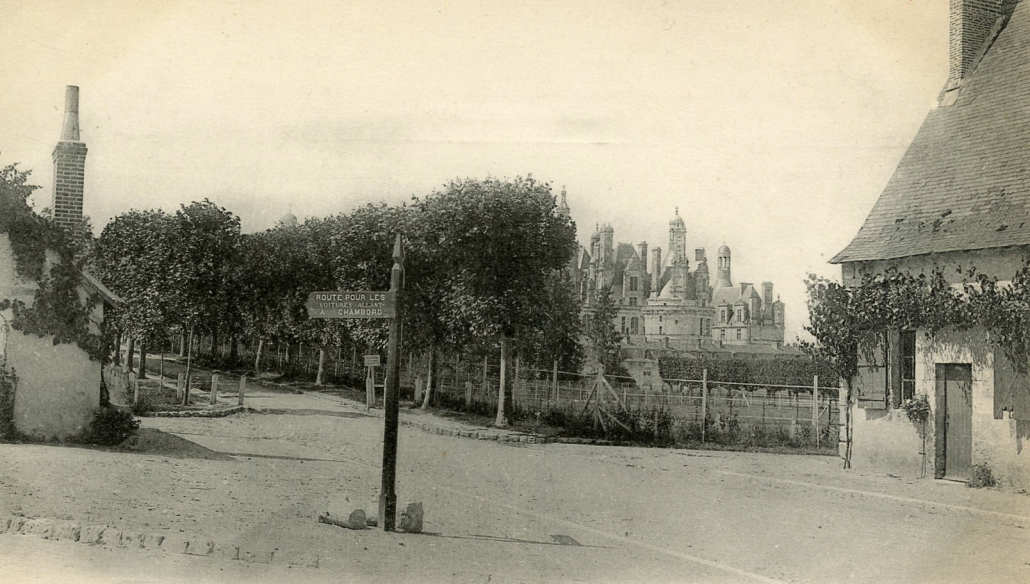
Follow this and additional works at: [https://digital.kenyon.edu/watson\\_postcards](https://digital.kenyon.edu/watson_postcards)

---

### Recommended Citation

"Pris du Village" (2015). *Orville E. Watson, D.D. Postcard Collection*. 459.  
[https://digital.kenyon.edu/watson\\_postcards/459](https://digital.kenyon.edu/watson_postcards/459)

This Book is brought to you for free and open access by the Archives at Digital Kenyon: Research, Scholarship, and Creative Exchange. It has been accepted for inclusion in Orville E. Watson, D.D. Postcard Collection by an authorized administrator of Digital Kenyon: Research, Scholarship, and Creative Exchange. For more information, please contact [noltj@kenyon.edu](mailto:noltj@kenyon.edu).



ROUTE POUR LES  
VOITURES ALLANT  
A CHAMBORD

# CARTE POSTALE

*Tous les Pays étrangers n'acceptent pas la Correspondance au recto.  
(Se renseigner à la Poste).*

CORRESPONDANCE

ADRESSE