
Volume 3
Issue 1 *Special Ottonian Issue*

2011

New Journals: Journal of Late Antiquity

Follow this and additional works at: <https://digital.kenyon.edu/perejournal>

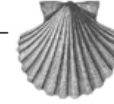


Part of the Ancient, Medieval, Renaissance and Baroque Art and Architecture Commons

Recommended Citation

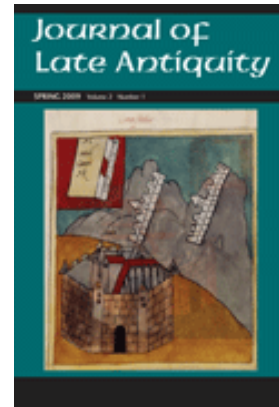
. "New Journals: Journal of Late Antiquity." *Peregrinations: Journal of Medieval Art and Architecture* 3, 1 (2010). <https://digital.kenyon.edu/perejournal/vol3/iss1/11>

This Short Notice is brought to you for free and open access by Digital Kenyon: Research, Scholarship, and Creative Exchange. It has been accepted for inclusion in *Peregrinations: Journal of Medieval Art and Architecture* by an authorized editor of Digital Kenyon: Research, Scholarship, and Creative Exchange. For more information, please contact noltj@kenyon.edu.



New Journals

The *Journal of Late Antiquity* (JLA) is the first international English-language journal dedicated to the study of Late Antiquity writ large. The journal provides a venue for multi-disciplinary coverage of all the methodological, geographical, and chronological facets of Late Antiquity. All of Late Antiquity will be represented--from the late and post-classical world up to the Carolingian period, and including the late Roman, western European, Byzantine, Sassanid, and Islamic worlds, ca. AD 250-800. JLA is essential, not only as a space for scholarship dealing with practical and theoretical issues, but, in particular, to bridge the gap between literary and material culture scholarship. One of the primary goals of the journal is to highlight the status of Late Antiquity as a discrete historical period in its own right.



Scholars of Late Antiquity are invited to submit previously unpublished material for consideration for publication in JLA. Contributions should have a clearly stated thesis and argument firmly based in the use of primary sources material. We particularly encourage submissions relating to the relationship between material culture and traditional literary sources. If there is a single theme that we would expect all of the contributions to manifest, it would be that, in some manner, they illuminate Late Antiquity as a discrete period with its own unique identifying characteristics. Submissions may be forwarded in e-format (Word or WordPerfect) to:

Ralph W. Mathisen, Managing Editor,

ralphwm@illinois.edu

and

ruricius@msn.com

http://www.press.jhu.edu/journals/journal_of_late_antiquity/