

1871

## George Southard Botany Book

George F. Southard

Follow this and additional works at: <https://digital.kenyon.edu/rarebooks>

 Part of the Botany Commons

---

### Recommended Citation

Southard, George F., "George Southard Botany Book" (1871). *Rare Books and Manuscripts*. 1.  
<https://digital.kenyon.edu/rarebooks/1>

This Book is brought to you for free and open access by the Special Collections at Digital Kenyon: Research, Scholarship, and Creative Exchange. It has been accepted for inclusion in Rare Books and Manuscripts by an authorized administrator of Digital Kenyon: Research, Scholarship, and Creative Exchange. For more information, please contact [noltj@kenyon.edu](mailto:noltj@kenyon.edu).

Botany

Geo. F. Southard

May 1871

Knox College  
Ohio

Given to

Barney E. Southard

June 15-1907.



OLIVER GOLDSMITH.

Geo. F. Southard

Kinyon College.

# Index.

Ranunculaceae	Ranunculus	Fascicularis	13
	Thalictrum	Anemonoides	28
	Aquilegia	Vulgaris	42
	Anemone	Cyathodorea	75
Liliaceae	Asparagus	Marialis	15
	Fritillaria	Cernuum	2
	Fulpa	Gracilaria	0
	Ornithogalum	Umbellatum	27
	Utricularia	Perfoliata	16
	Polygonatum	Biflorum	63
	Smilacina	Racemosa	48
	Syrus	Coronaria	1
Rosaceae	Crataegus	Sparthulata	17
	Prunus	Cervinus	18
	Fragaria	Virginiana	19
	Rosa	Sulphurea	29
	Rubus	Villosus	30
	Spiraea	Salicifolia	39
	Rubus	Odoratus	74
	Rosa	Glauca	83

Barbrodaceae

Caulophyllum

May 17.

Thalictrifolius

Barbareae Podophyllum Peltatum 10

Bruciferae Capsella Bursa Pastoris 14  
Brassica Nigra 85

Stellaria Media 20

Crastium Viscosum 34

Silene Virginica 49

Lychonis Lithago 58

Veronica Sorsyllifolia 9

Veronica Americana 70

Verbasum Blattaria 79

Scrophulariaceae Verbasum Thapsus 81

Linaria Vulgaris 80

Viburnum Prunifolium 11

Caprifoliaceae Lonicera Tartarica 12

Nizelia Splenda 33

Lonicera Sempervirans 58

Sambucus Canadensis 68

Viburnum Acerfolium 72

Violaceae Viola Glauca 3

Pubescent 4

Cucullata 5

Tricolor 22

Polemoniaceae Polemonium Reptans 6

Shlox Paniculata 26

Geraniaceae Geranium Maculatum 7

Perlargonium Cordatum 52

Oxalis Stricta 78

Portulacaceae Claytonia Virginica 8

Rosaceae

*Dynus Coronaria*

Small Tree.

American or Garland  
Crab Apple.



Hazel Dell  
Gam. Tree Ohio  
April 30 1871

1

Silicaceae

*Fraxinus Communis*



Will back Milnor Hall

April 30 1871

2

Violaceae. *Blanda*  
*Viola Blanda*

Sweet White Violet



3

Hazel Dell  
April 30 Gambier.  
1871

*Viola Pubescens*

Yellow Violet



4

April 1871  
Hards back of  
Beverly Hall

*Viola Cucullata*

Common Violet



5

April 1871  
Beverly Hall

Polemoniaceae

Polemonium

Reptans



6

April 1871  
Back of  
Milner Hall

Geraniaceae.

Geranium

Wild Geranium

Maculatum.



7

Theolog. Seminary April 1871

Portulacaeae

Claytonia

Virginica

Spring Beauty April 1871



8

Dr. Fyfe's  
1871 Lot

Scrophulariaceae

Veronica

Serpicillifolia



9

April 7  
Acreson

Barbentidaceae  
 Podophyllum  
 Peltatum

Collyer Hill  
 East Hill



10

Mandrake or  
 May Apple April 71

Caprifoliaceae

Black Hawthorn Viburnum

Prunifolium.

Oak Hill  
 N.W. side



11

April 71

Caprifoliaceae

Honey-suckle Lonicera  
 Tartarica.



12

Garden May 1871

Ranunculaceae

Ranunculus  
 Fascicularis

Common Buttercup



13

April 1871

Back

Exley Hall

Cruciferae

Bishop's Walk

Capsella

Shepherd's Purse. Bursa Pastoris



April 71

Liliaceae

Asparagus

Convallaria Majalis.



Graveyard April 1871

Liliaceae

Bryley Hall

Utricularia

Perfoliata

May 71



Rosaceae

Crataegus

Spathulata



Woods Park

May 1871

Bryley Hall

Rosaceae

Prunus

Cerasus.

Berkeley Hall



18

May 1871

Rosaceae

Fragaria

Virginiana

Berkeley Hall May 1871



14

Campanulaceae

Campanophyllaceae

Stellaria

Media

20

May 1871

Sapiindaceae

acer

Saccharinum

bolley Park  
April  
1871



Violaceae

Viola

Tricolor

Garden

May 17 1871



22

Araceae

May 18 71

Arisaema

Trichophyllum

Woods back Burley Hall



23

mariaaceae

Dicentra

Spectabilis

Garden

May 17 71



24

Malvaceae

Malva

Rotundifolia

Prof. Johnson's Lot  
May 4 1871



25

Polemoniaceae

Phlox

Paniculata

Woods Hole  
Barker's



26

May 10/1

Liliaceae

Ornithogalum

Umbellatum



27

Brady's Hill

May 14 1871

Ranunculaceae

Thalictrum

Anemonoides



28

College Hill

April 1871

Rosaceae

Rosa

Sulphurea

Garden



29

May 18/87

Rosaceae

Rubus

Villosus



30

Hayd Hill

31

May 21/87

Amaryllidaceae

Hypoxys

Erecta



31

May 23/87

East

College Hill



32

Orchidaceae  
*Cypripedium*  
*parviflorum*

Rozel Dell  
 May 21 1871

Caprifoliaceae  
*Viburnum*  
*splendens*

Gardner  
 May 22nd



33

Caryophyllaceae  
*Ornithoglossum*

*viridulum* *puberulum*  
*C. Asuncion*  
 May 18th  
 1871



34

Borraginaceae

Cynoglossum

Officinale

Back

Kinyon College



35

May 19/1871

Labiatae

Mentha

Canadensis

East Bank

Kokosing River May 19 1871



36

Umbelliferae

Pastinaca

May 23/1871

Sativa



37

Crassulaceae

*Sedum*

*formatum*

May 23 1871

Koyel Hill

38



Saxifragaceae

*Philadelphus*

*coronarius*

Garden.

May 23 1871

39



Compositae

*Aster*

*linearifolius*

40

May 17 1871

College Hill

W. H. Fiske



Rosaceae

Spiraea

Salicifolia

May 23 1871

Garden

41



Ranunculaceae

Aquilegia

Vulgaris

May 23 1871

Garden

42



43

Caprifoliaceae

*Saxifraga*

*canadensis*

44

May 23<sup>rd</sup> 1871

Compositae

*Arnica*

*montana*

May 29<sup>th</sup> 1871

West Collyer Hill

45

Compositae

46

Magnoliaceae  
Lindendron  
fulvipes

May 25



Upper Grove Road. 47



48  
Liliaceae  
Smilacina  
racemosa

May 29  
Back Summary

Jridaceae Sisyrinchium

Jossaceae Bermudiana

Jossaceae

Kodux

50

47

May 27 1871

Hazel Dell

Caryophyllaceae

Silene

Virginia

49

E. Collyer Hill

May 29

Rubiaceae

Houstonia

Coerulea

May 26 1871

51

West

Collyer Hill

Gramineae

May 31

*Perlongonium*  
*cordatum*

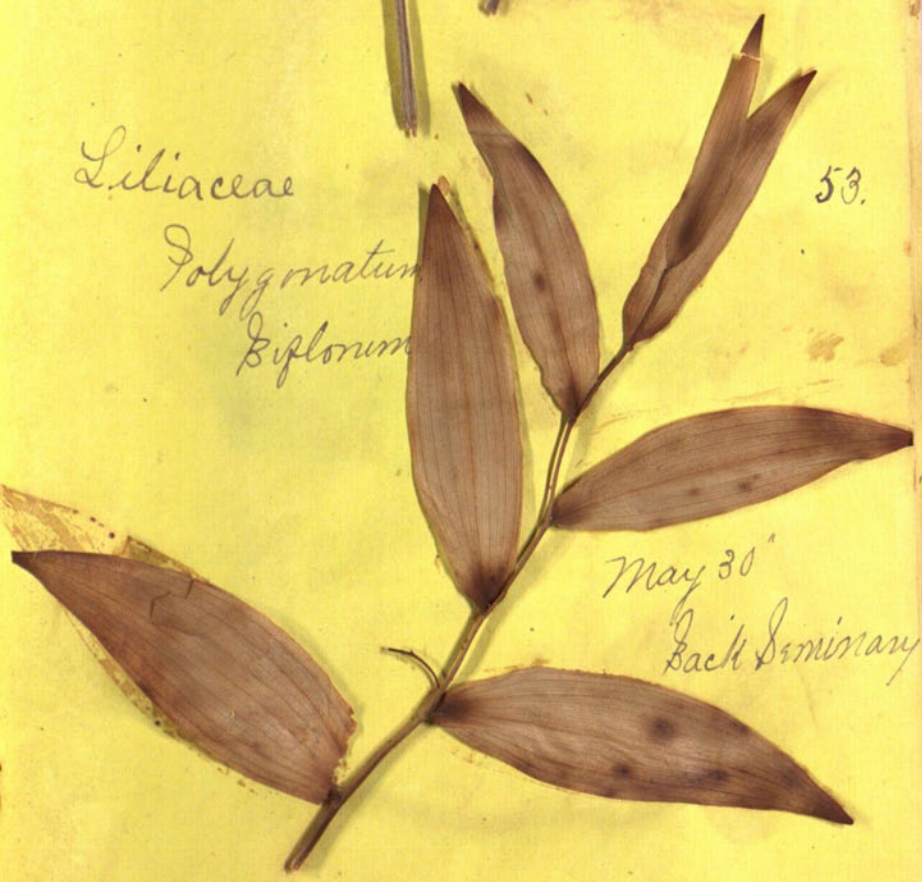
Garden 52



Liliaceae

53.

*Polygonatum*  
*biflorum*



May 30

Back Liminary

Orobanchaceae

Conopholis

Americana

54

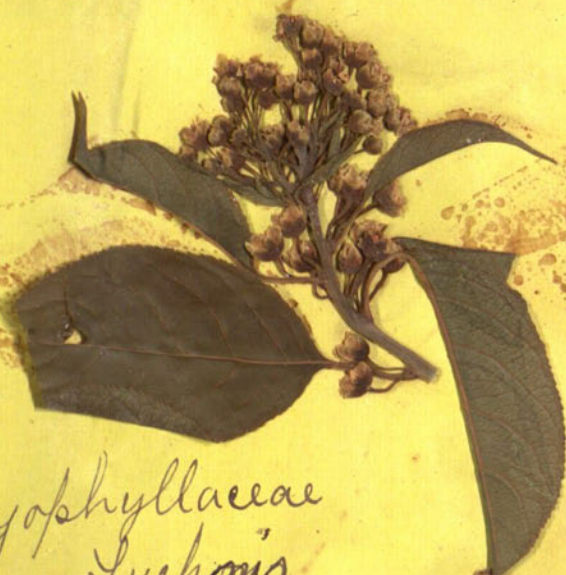


June 1871

Bishop's Back Bone

Solanaceae

Q Q



55

Baryophyllaceae

Lychonis

Lithago



56

*Asclepias daurica*  
*Asclepias*  
*peruviana*



57

C. College Hill

June 2<sup>nd</sup> 1871

*Caprifoliaceae*  
*Lonicera*  
*imperfuta*



58

June 4/1871

*Leguminosae*  
*Trifolium*  
*repens*



59

May 23

College Park

Leguminosae

Trifolium

pratense

60



Campanulaceae

Specularia

perfoliata

East College Hill

61

June 4"

Simulacrum  
Smilax



62

Back of  
Prof. Strong's

June 8"

Nymphaeaceae

Nuphar

advena

63



Dresden Ohio

May 1871

*Primulaeae*  
*Gymnarchia*  
*Quadrifolia*



June 11/87

64

*Ericaceae*  
*Dryas*  
*Rotundifolia*

June 11/87



West College Hill

65

*Solanaceae*  
*Solanum*  
*suberosum*  
 "Sennett's ville"



June 13/87

66



67

*Phytolaccaceae*  
*Phytolacca*  
*Dreandra*  
 East College Hill

June 10  
 1877

Caprifoliaceae  
*Sambucus*  
*canadensis*

68



South College Hill  
 June 10<sup>th</sup> 1871

Rubiaceae  
*Mitchella*  
*repens*

"Carr's"

69



June 14 1871



70

Hazel Hill

June 11 1871

Scrophulariaceae  
*Veronica*  
*Americana*

Primulaceae  
Onagraceae  
Oenothera



71

Garden

June 9, 1871

Lapridifoliaeae  
Viburnum  
Acerfolium



72

"Carrs" June 14, 1871

Brassellaceae

June 10, 1871 Scodium

Pulchellum



73

Rosaceae

Rubus

odoratus



74

"Carrs."

June 13, 1871

Ranunculaceae

June 10<sup>th</sup> 1871

Anemone  
cylindrica



75

Santa  
Kokong River

Labiatae  
Prunella  
Vulgaris  
June 18<sup>th</sup> 1871  
Hazel Dell.



76

Labiatae  
Aspeta

Cataria  
Bishop's Walk



77

June 19<sup>th</sup>  
1871

Geraniaceae  
oxalis  
stricta

78

June 19<sup>th</sup> 1871

West Asuncion



Scrophulariaceae

79

June 19<sup>th</sup> 1871

South College

Verbascum

Blattaria

Scrophulariaceae

Linaria

Ascension Vulgaris



80

Scrophulariaceae

June 18<sup>th</sup> 1871

Verbascum

Thapsus.

Hazel Dell.



81

Onagraceae

*Circaea*

*Luteoliana*

June 20 '1871



82

S. College.

Rosaceae

*Rosa*

*glanda*

June 14 '1871

"baris"



83

Ericaceae

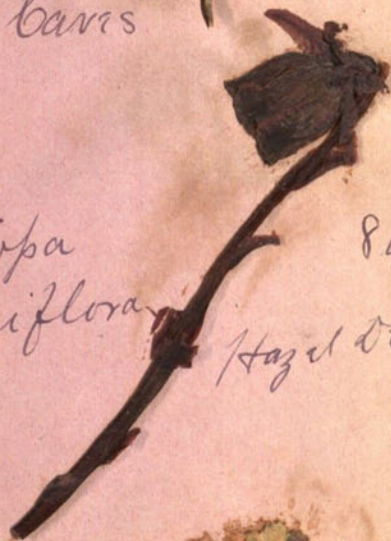
*Monotropa*

*uniflora*

June 18 '71

84

Hazel Dell



Cruciferae

*Brassica*

*stigma*

Garden



85-

June 19

Compositae

*Taraxacum*

*Dens Leonis*

June 19 1871



86

Bishop's Walk

Signoniaceae

*Catalpa*

*Bignonioides*

June 20

opposite Mission

House



87